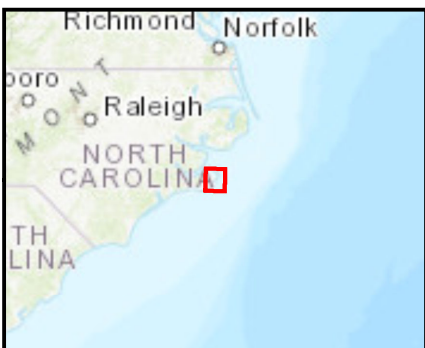
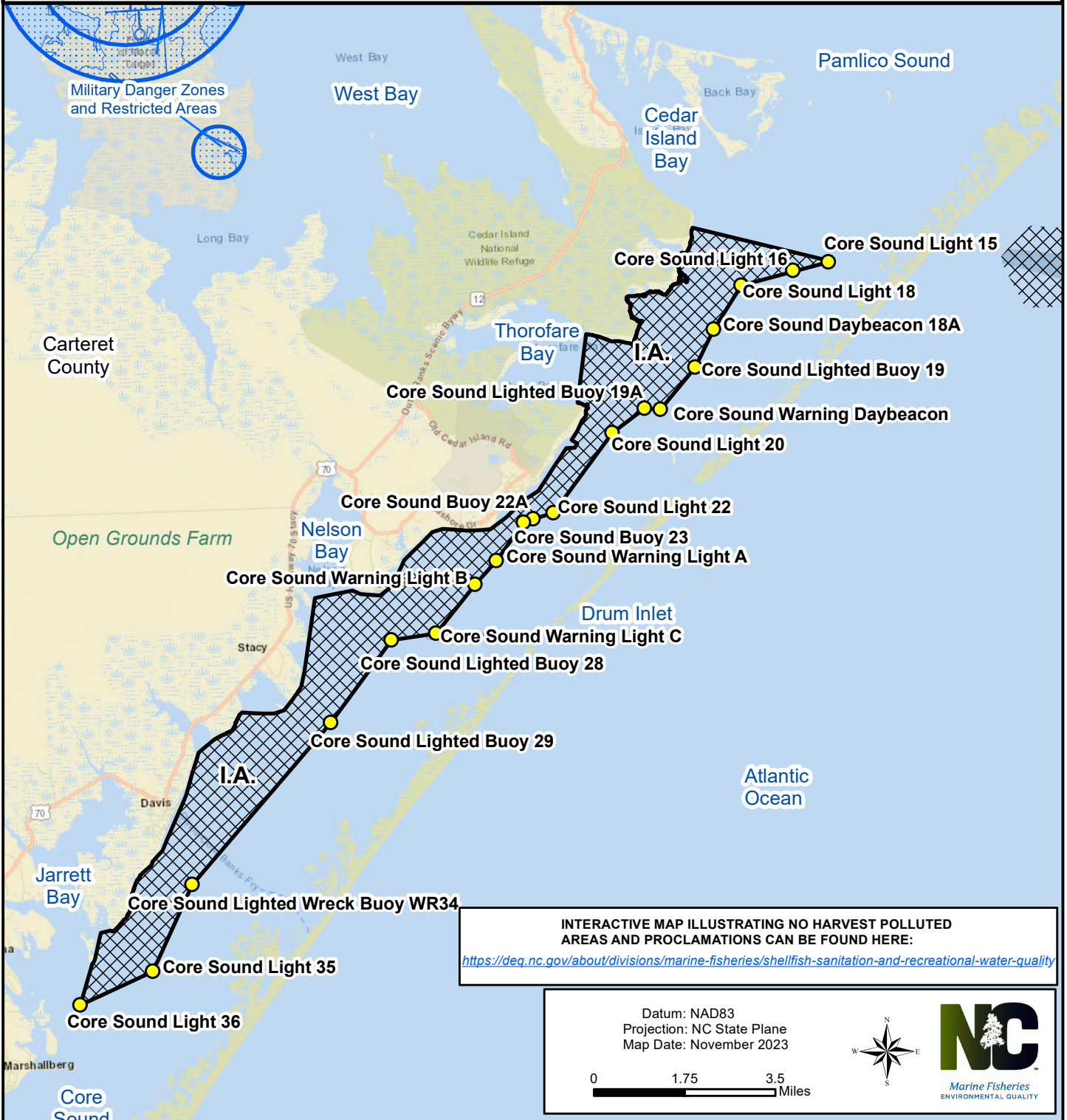



Maps are provided for illustrative purposes to assist the public.
 Maps do not supersede existing rules or proclamations.



PROCLAMATION SF-09-2023

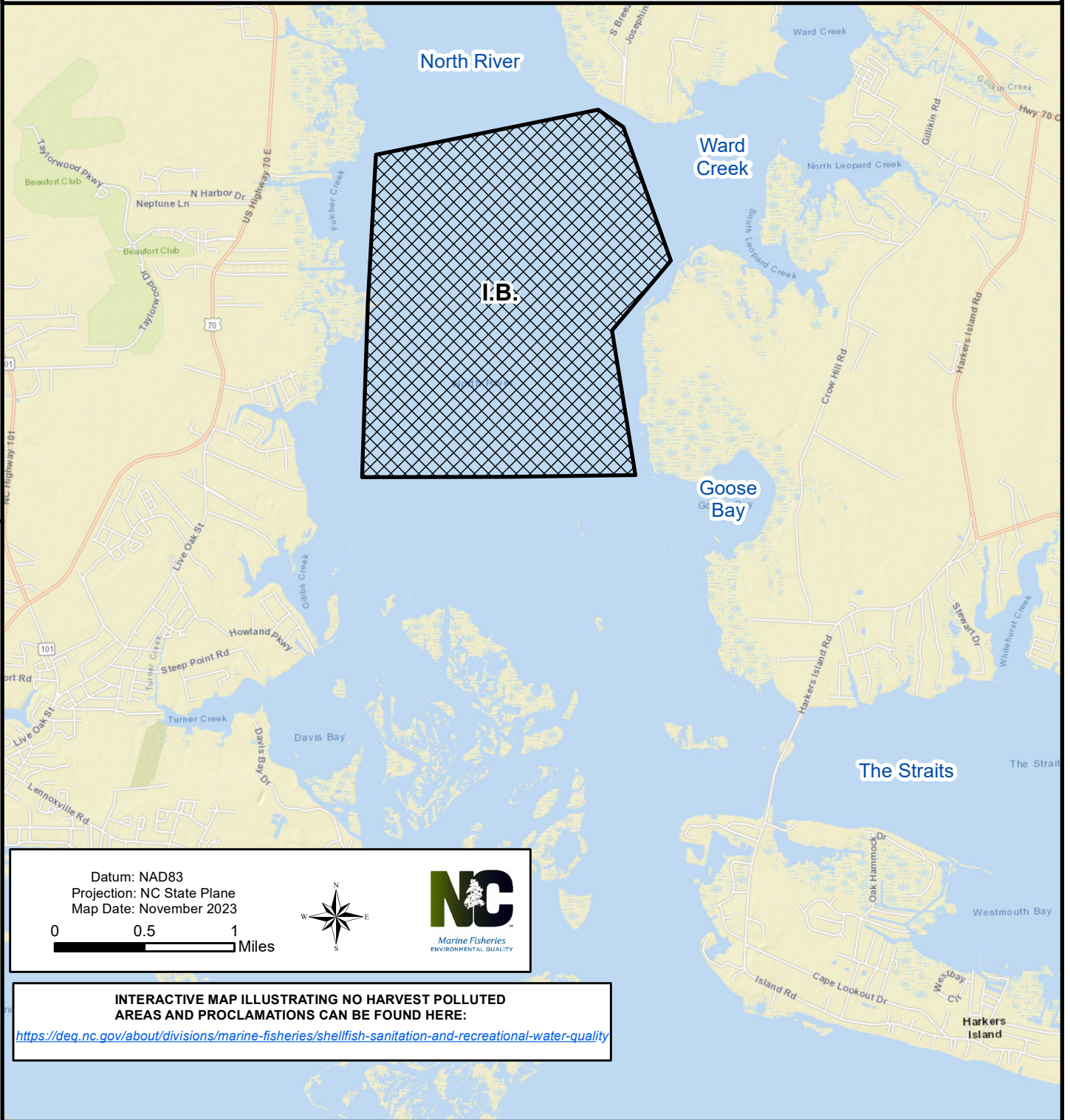
Core Sound

Map 1

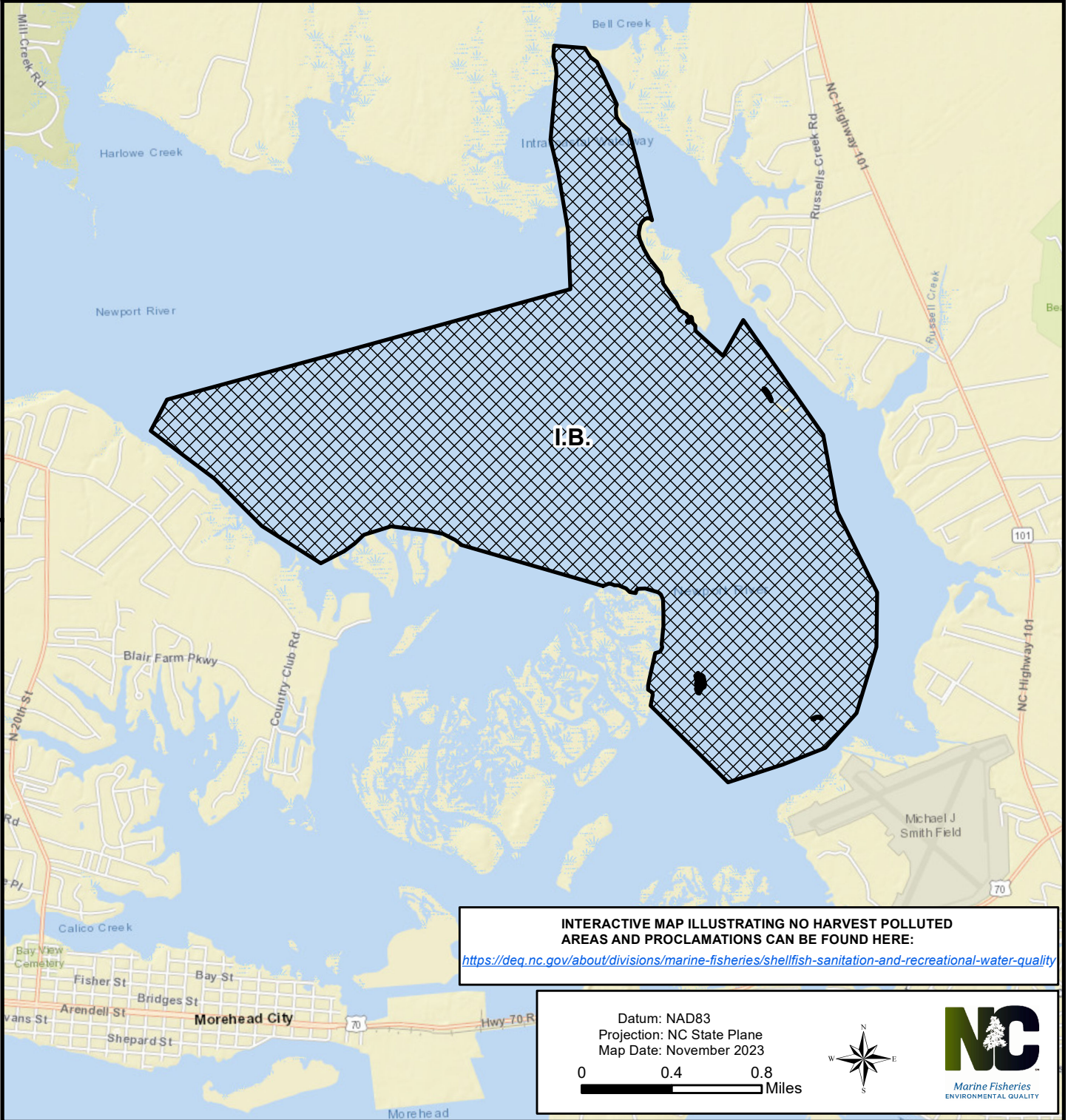
 Mechanical Clam Harvesting Areas

MECHANICAL CLAM HARVESTING
ALLOWED IN HATCHED AREAS

Maps are provided for illustrative purposes to assist the public.
Maps do not supersede existing rules or proclamations.



Maps are provided for illustrative purposes to assist the public.
Maps do not supersede existing rules or proclamations.



PROCLAMATION SF-9-2023

Newport River

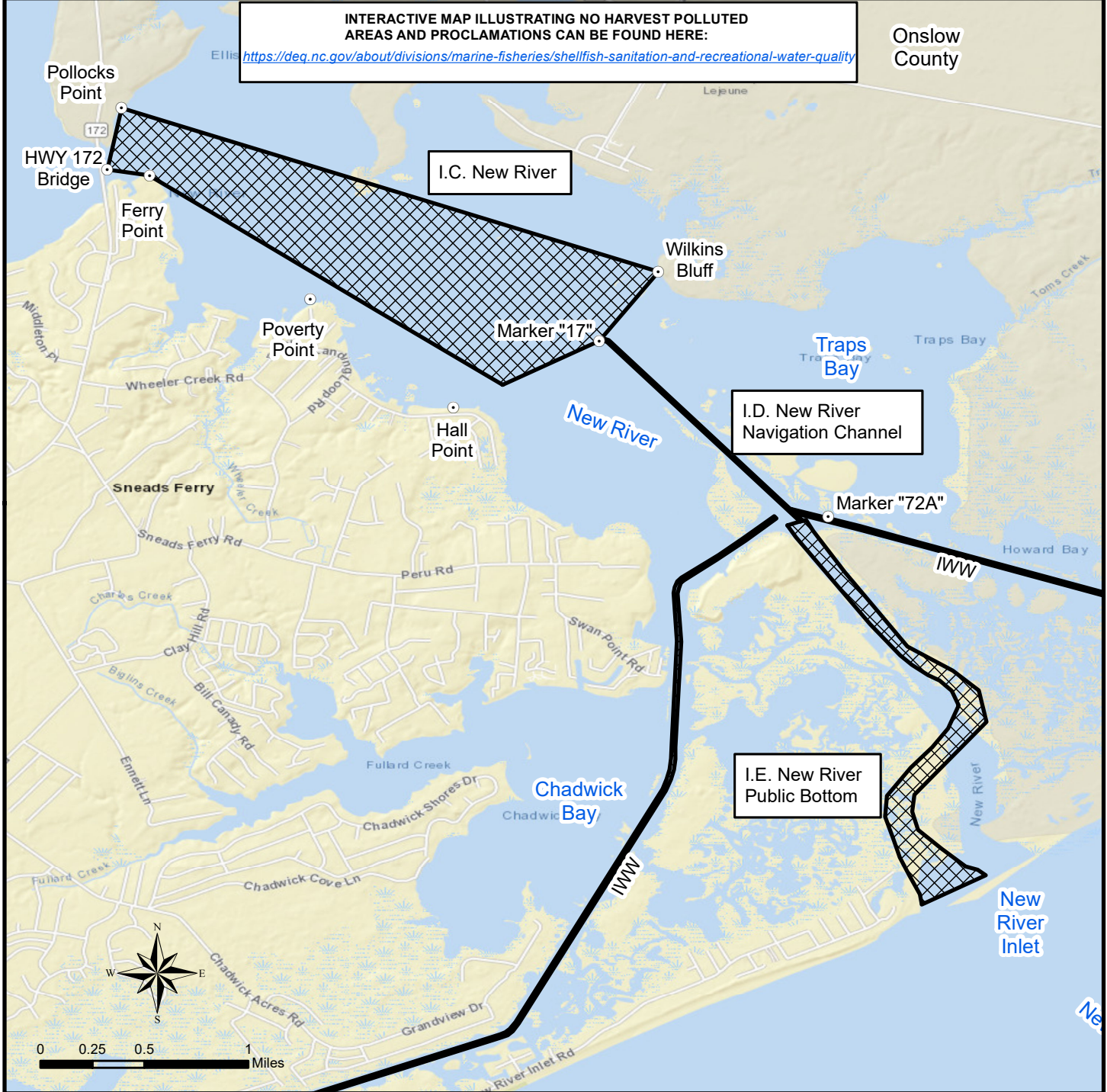
Map 3

 Mechanical Clam Harvesting Areas

**MECHANICAL CLAM HARVESTING
ALLOWED IN HATCHED AREAS**

Maps are provided for illustrative purposes to assist the public.
 Maps do not supersede existing rules or proclamations.

INTERACTIVE MAP ILLUSTRATING NO HARVEST POLLUTED AREAS AND PROCLAMATIONS CAN BE FOUND HERE:
<https://deq.nc.gov/about/divisions/marine-fisheries/shellfish-sanitation-and-recreational-water-quality>



**PROCLAMATION
 SF-09-2023**

New River

Map 4

Datum: NAD83
 Projection: NC State Plane
 Map Date: November 2023



 Mechanical Clam Harvesting Areas

MECHANICAL CLAM HARVESTING ALLOWED IN HATCHED AREAS