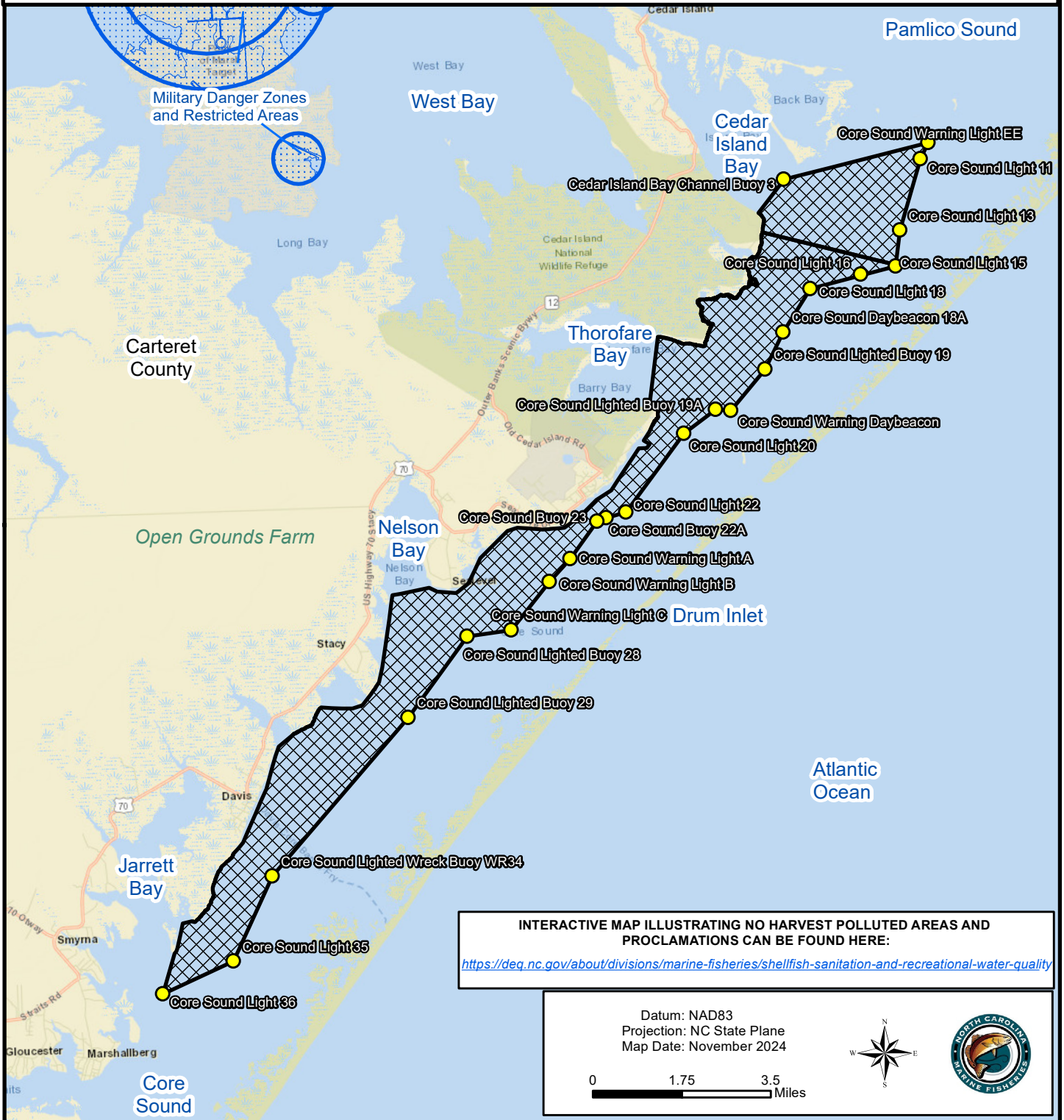


Maps are provided for illustrative purposes to assist the public.
 Maps do not supersede existing rules or proclamations.



INTERACTIVE MAP ILLUSTRATING NO HARVEST POLLUTED AREAS AND PROCLAMATIONS CAN BE FOUND HERE:
<https://deq.nc.gov/about/divisions/marine-fisheries/shellfish-sanitation-and-recreational-water-quality>

Datum: NAD83
 Projection: NC State Plane
 Map Date: November 2024

0 1.75 3.5 Miles



PROCLAMATION SF-8-2024

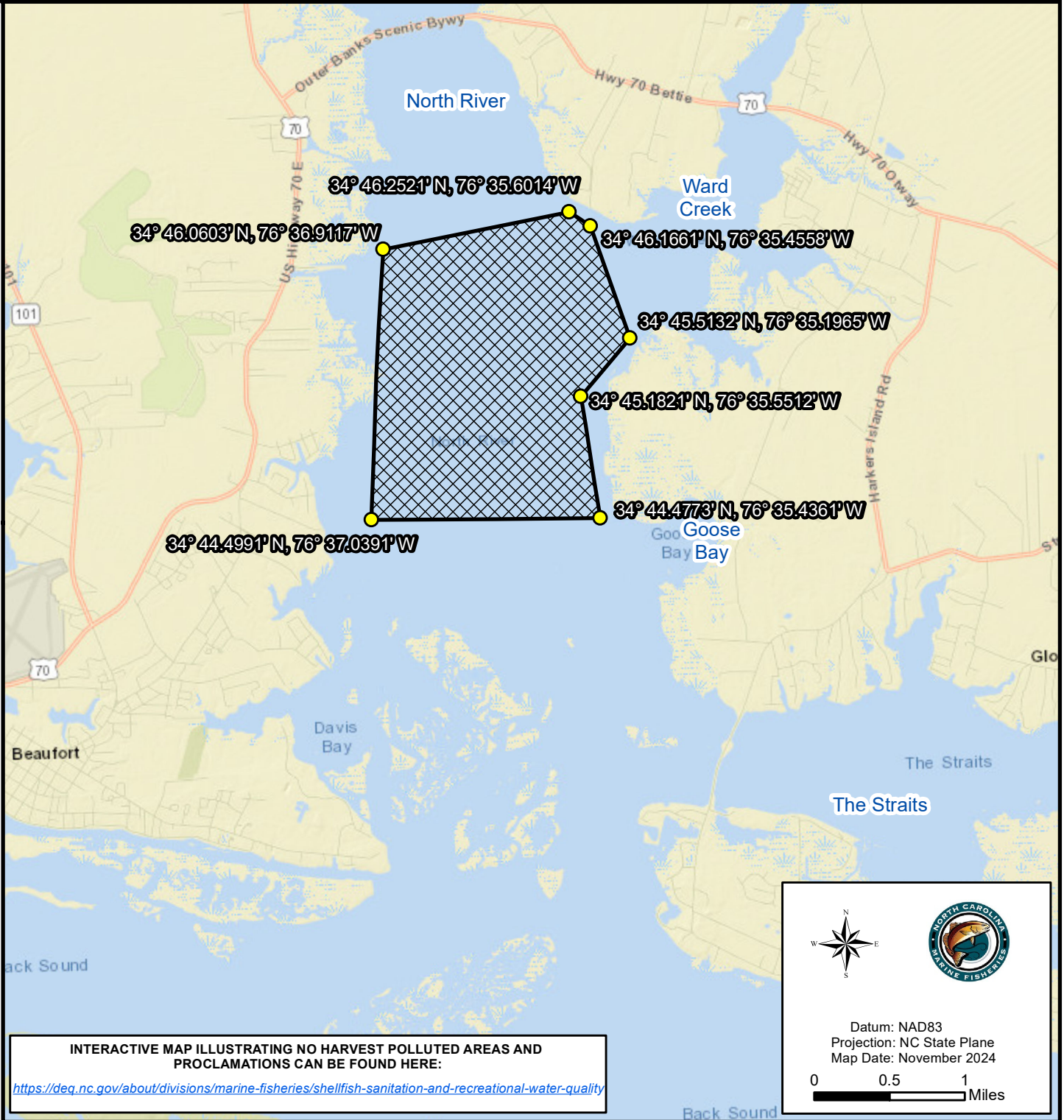
I.A. Core Sound

Map 1

 Mechanical Clam Harvesting Areas


MECHANICAL CLAM HARVESTING ALLOWED IN HATCHED AREAS

Maps are provided for illustrative purposes to assist the public.
 Maps do not supersede existing rules or proclamations.



PROCLAMATION SF-8-2024

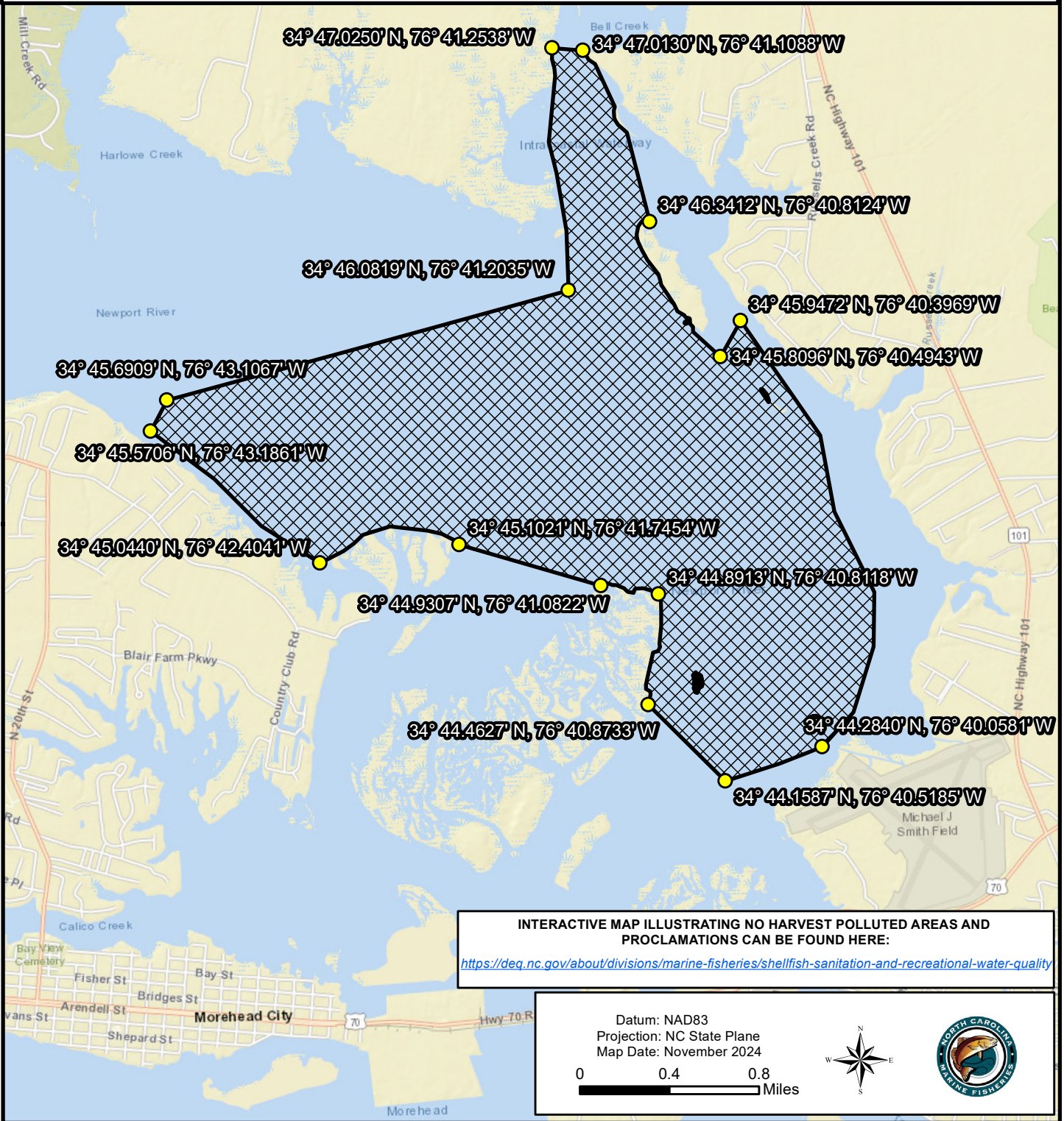
I.B. North River

 Mechanical Clam Harvesting Areas

**MECHANICAL CLAM HARVESTING
 ALLOWED IN HATCHED AREAS**

Map 2


Maps are provided for illustrative purposes to assist the public.
 Maps do not supersede existing rules or proclamations.



PROCLAMATION SF-8-2024

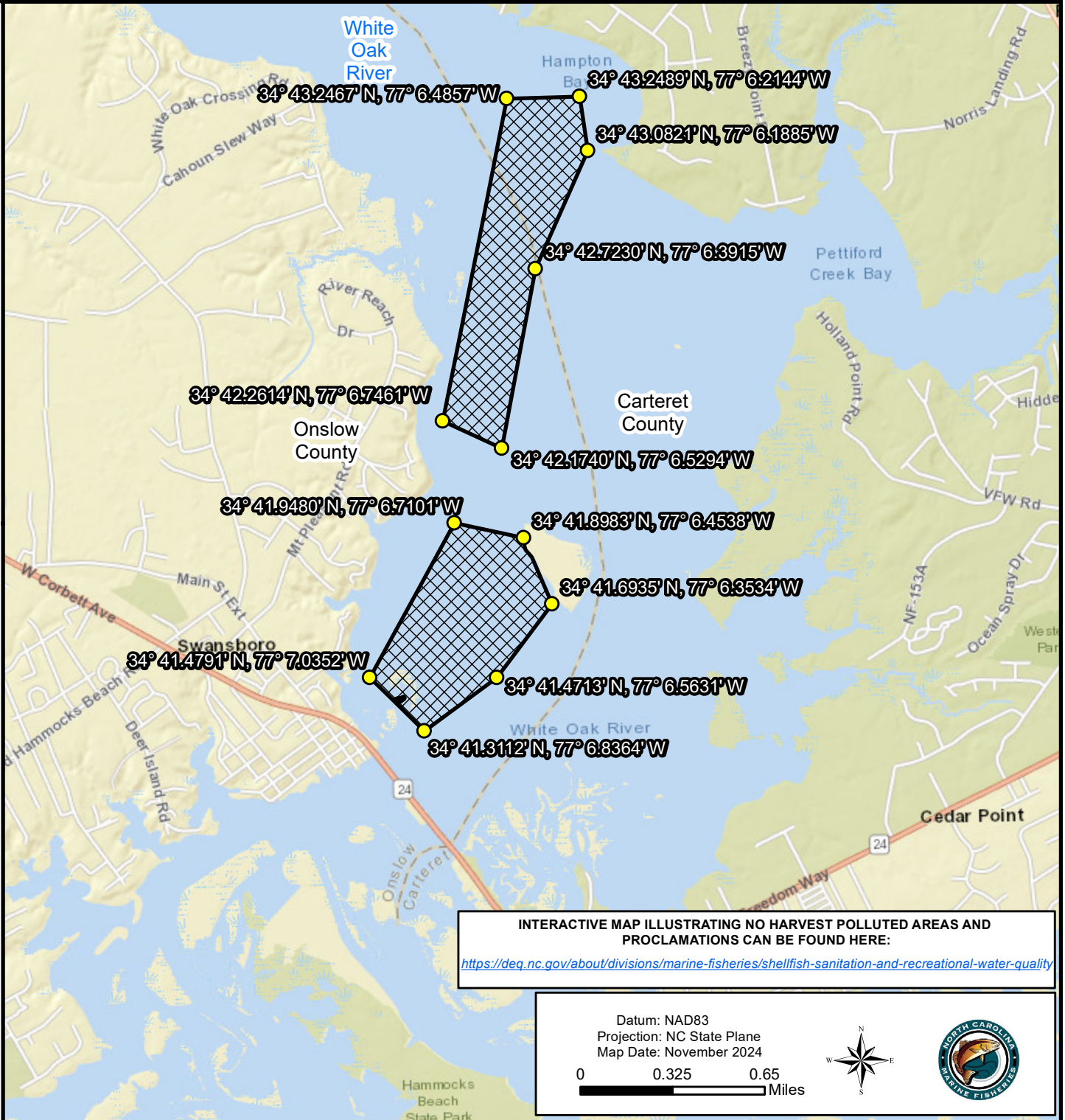
I.C. Newport River

Map 3

 Mechanical Clam Harvesting Areas

MECHANICAL CLAM HARVESTING
ALLOWED IN HATCHED AREAS

Maps are provided for illustrative purposes to assist the public.
 Maps do not supersede existing rules or proclamations.



INTERACTIVE MAP ILLUSTRATING NO HARVEST POLLUTED AREAS AND
 PROCLAMATIONS CAN BE FOUND HERE:
<https://deq.nc.gov/about/divisions/marine-fisheries/shellfish-sanitation-and-recreational-water-quality>

Datum: NAD83
 Projection: NC State Plane
 Map Date: November 2024

0 0.325 0.65
 Miles



PROCLAMATION SF-8-2024

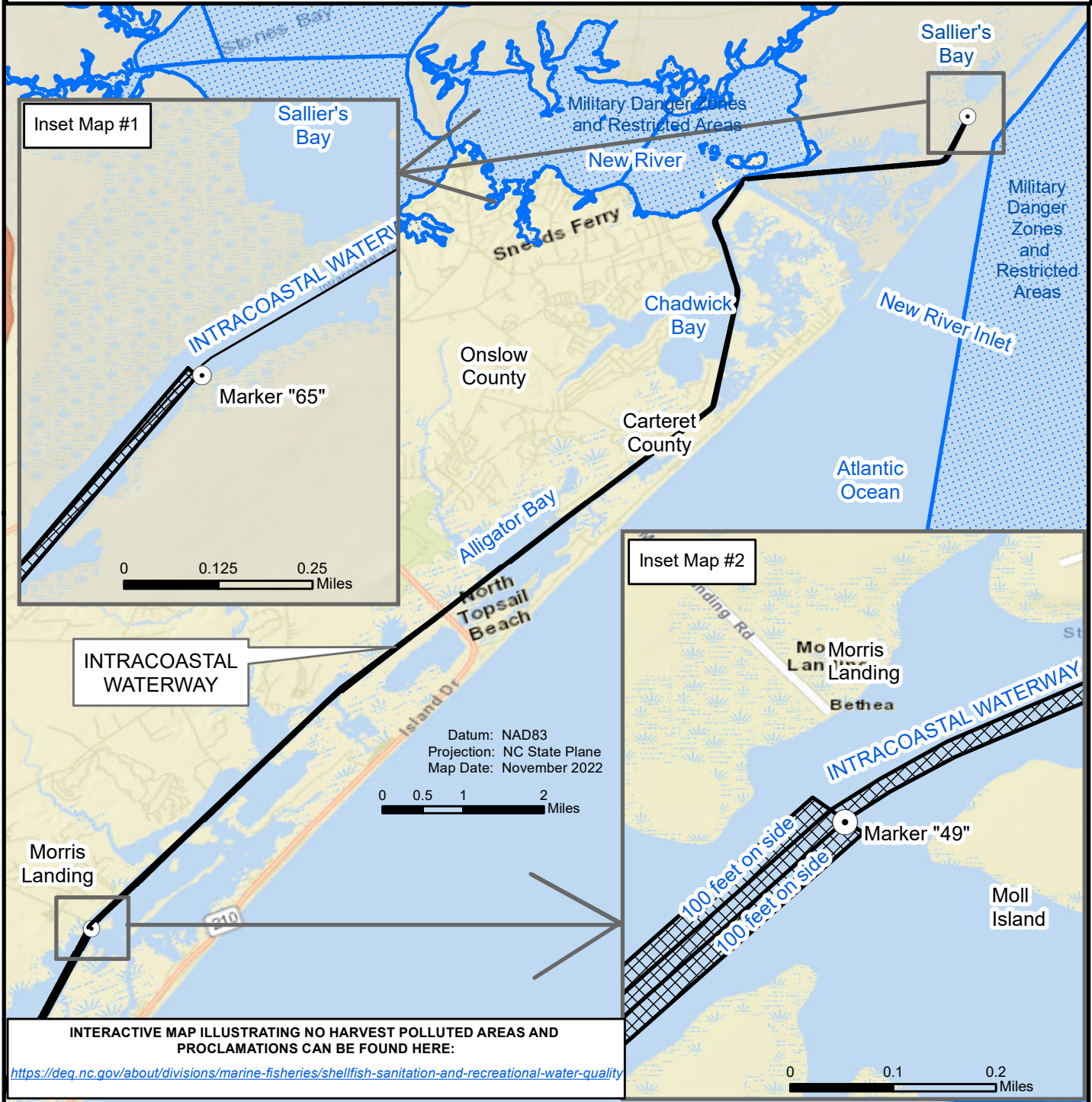
I.D. White Oak River

Mechanical Clam Harvesting Areas

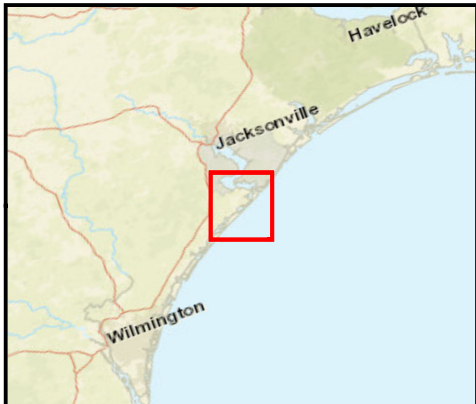
Map 4

**MECHANICAL CLAM HARVESTING
 ALLOWED IN HATCHED AREAS**

Maps are provided for illustrative purposes to assist the public.
 Maps do not supersede existing rules or proclamations.




INTERACTIVE MAP ILLUSTRATING NO HARVEST POLLUTED AREAS AND PROCLAMATIONS CAN BE FOUND HERE:
<https://deq.nc.gov/about/divisions/marine-fisheries/shellfish-sanitation-and-recreational-water-quality>



PROCLAMATION SF-8-2024

I.F. Intracoastal Waterway, from Marker "65" south of Sallier's Bay, to Marker "49" at Morris Landing.



 Mechanical Clam Harvesting Areas

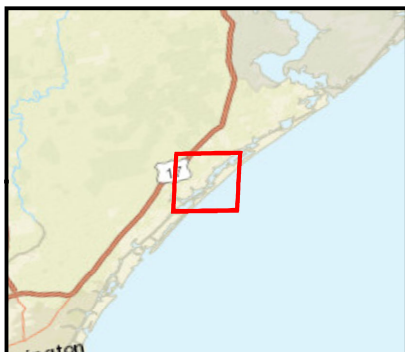
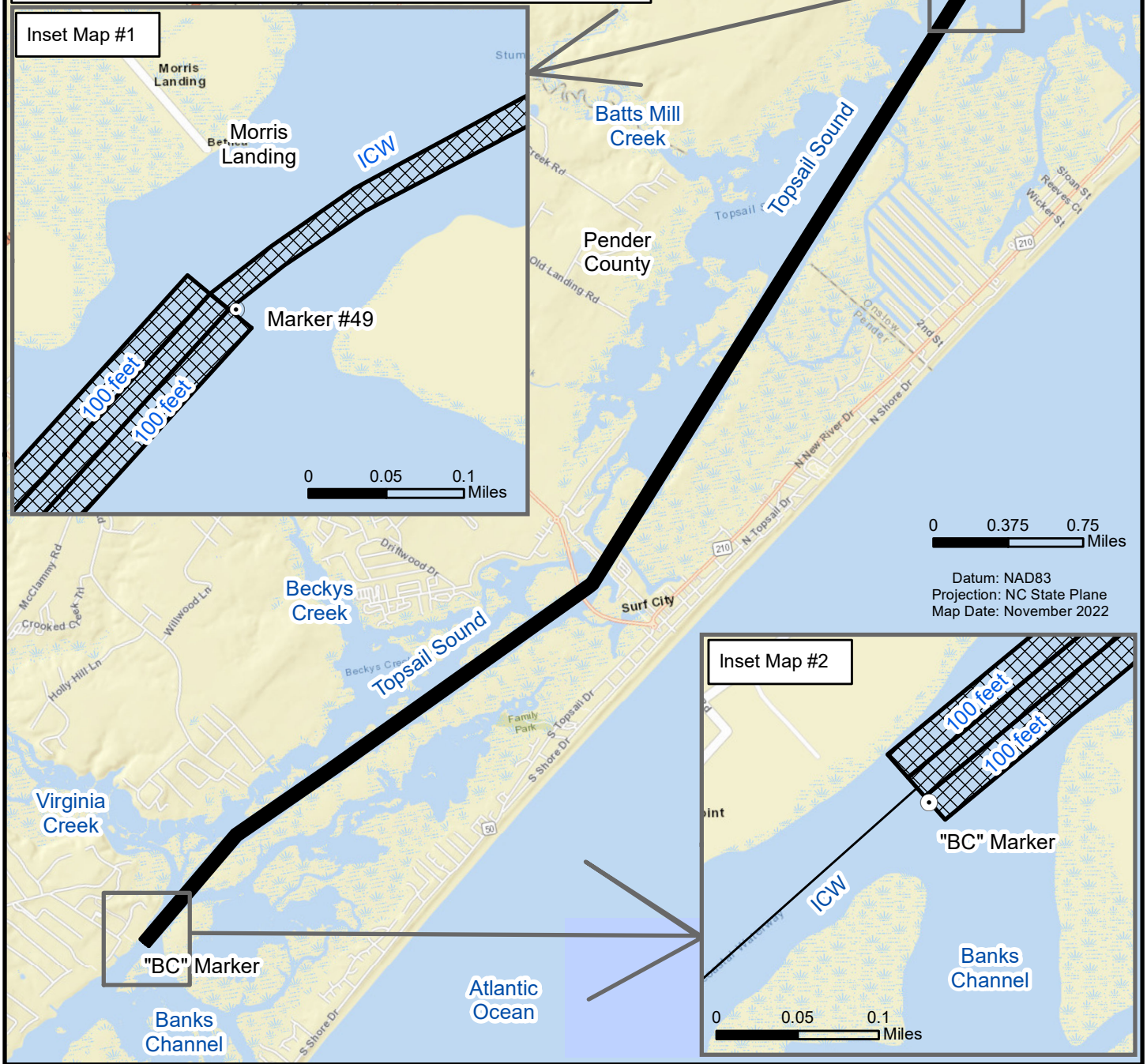
MECHANICAL CLAM HARVESTING ALLOWED IN HATCHED AREAS

Map 5

Maps are provided for illustrative purposes to assist the public.
Maps do not supersede existing rules or proclamations.

INTERACTIVE MAP ILLUSTRATING NO HARVEST POLLUTED AREAS AND
PROCLAMATIONS CAN BE FOUND HERE:


<https://deq.nc.gov/about/divisions/marine-fisheries/shellfish-sanitation-and-recreational-water-quality>



PROCLAMATION SF-8-2024

I.G. within and 100 feet on either side of the Intracoastal Waterway from Marker #49 at Morris Landing to "BC" Marker at Banks Channel.



 Mechanical Clam Harvesting Areas

**MECHANICAL CLAM
HARVESTING ALLOWED
IN HATCHED AREAS**

Map 6