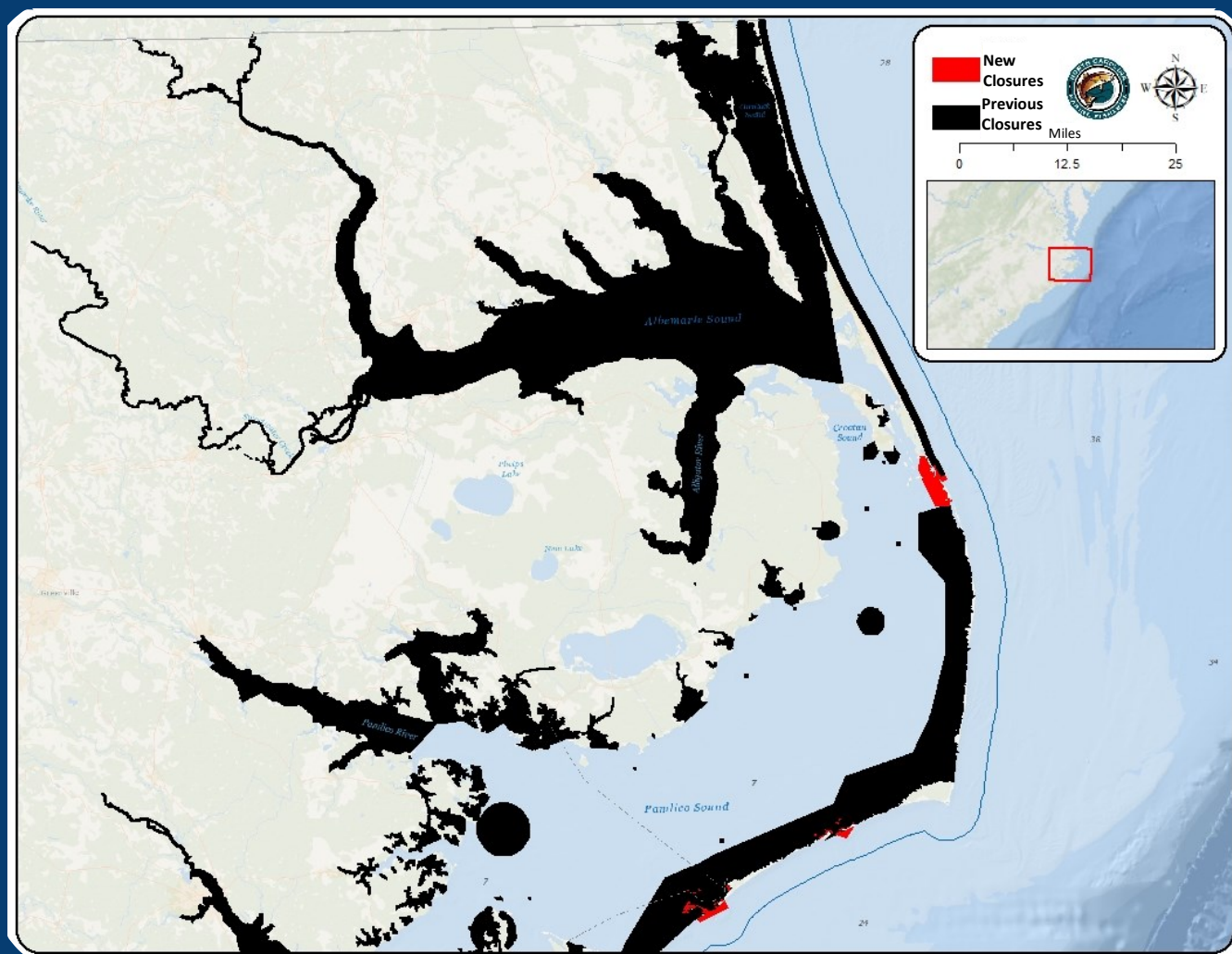


# Shrimp Fishery Management Plan Amendment 2

Shrimp are considered an annual crop influenced by the environment and fishing. Despite a decrease in effort, the shrimp fishery is one of the top commercial fisheries in North Carolina annually. Various gear modifications were implemented prior to Amendment 2 to address bycatch and critical habitat concerns including bycatch reduction devices (BRDs), turtle excluder devices (TEDs), tailbag modifications, area closures and restrictions, and harvest restrictions. In February 2022, the Marine Fisheries Commission adopted Amendment 2 to the Shrimp Fishery Management Plan. The goal of the plan is to further reduce bycatch of non-target species and minimize ecosystem impacts.

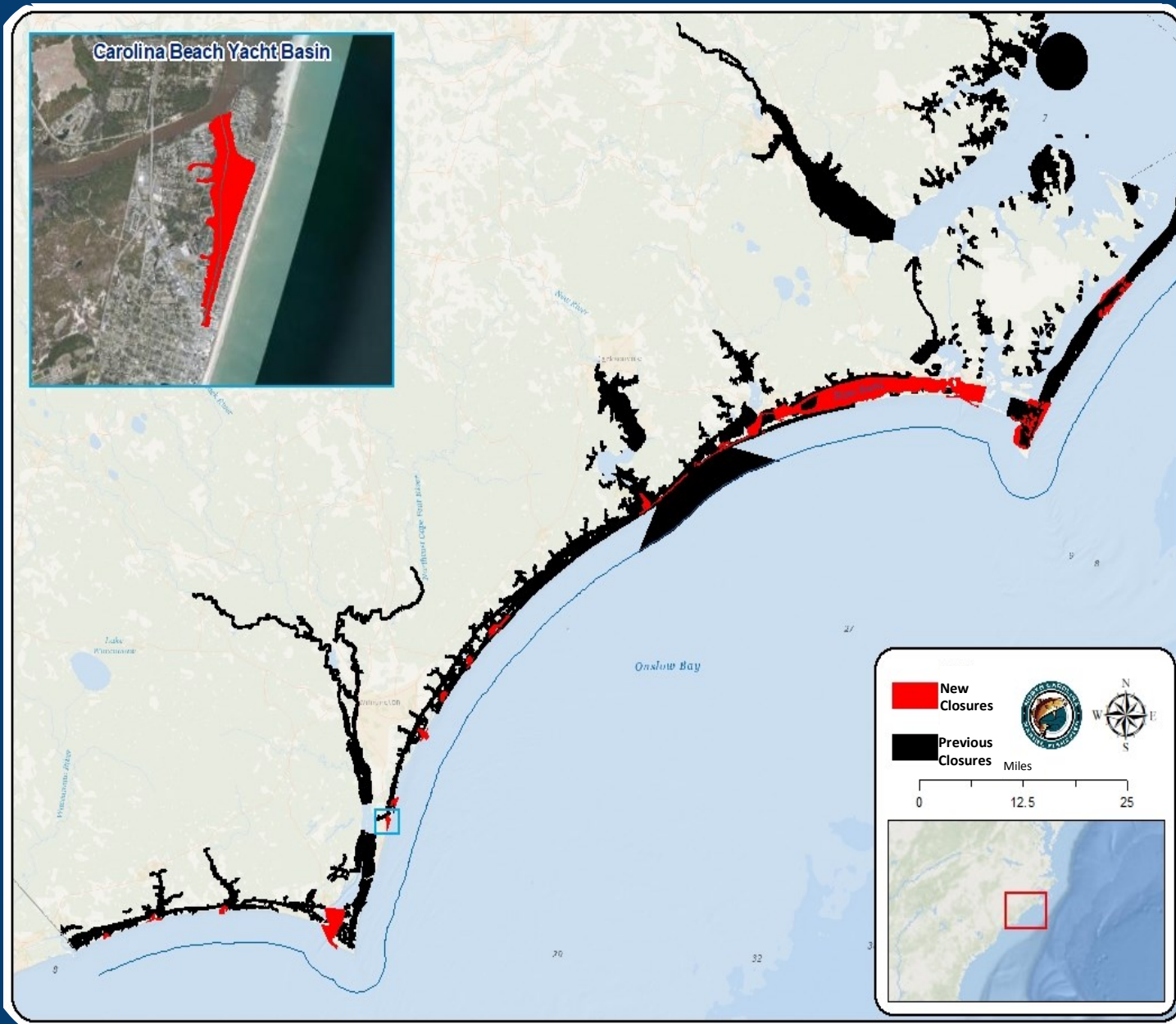
## Amendment 2 Management

- Prohibit all trawling in Crab Spawning Sanctuaries.
- Recreational cast net creel state-wide limit of 48 quarts heads on or 30 quarts heads off.
- Change the flexible opening date in all SSNAs to a static date of September 1.
- Continue collaboration with the industry workgroup to identify and test gear modifications to further reduce bycatch in the shrimp fishery.
- Prohibit shrimp trawling in the Carolina Beach Yacht Basin and Bogue Sound and its tributaries except for the Intracoastal Waterway (IWW).
- Provide recommendations for future action through adaptive management to address submerged aquatic vegetation (SAV) issues identified through collaboration of the Division, Coastal Habitat Protection Plan (CHPP) support staff, Habitat and Water Quality Advisory Committee, and stakeholder groups.
- Maintain headrope limits for shrimp trawls in internal coastal waters but allow for adaptive management to resolve user conflict.
- Investigate feasibility of a long-term shrimp trawl observer program.



## Habitat

Estuarine habitats, such as SAV and shell bottom, hold tremendous ecological, economic, and social value and warrant protection ensuring their health. Minimizing and/or avoiding impacts is important for maintaining healthy and productive fish stocks and preserving the ecosystem of our coastal estuaries. While habitat protection from shrimp trawling is addressed in the Shrimp FMP, the CHPP more broadly addresses habitat and water quality issues and solutions. More information on the CHPP and the long-term enhancement of coastal fisheries through habitat protection and enhancement efforts is available on the habitat information [website](#).



### Questions about Shrimp?

Contact the DMF shrimp biologist Chris Stewart  
(910) 796-7370 or [Chris.Stewart@ncdenr.gov](mailto:Chris.Stewart@ncdenr.gov)

Or visit the [Division website](#)

