

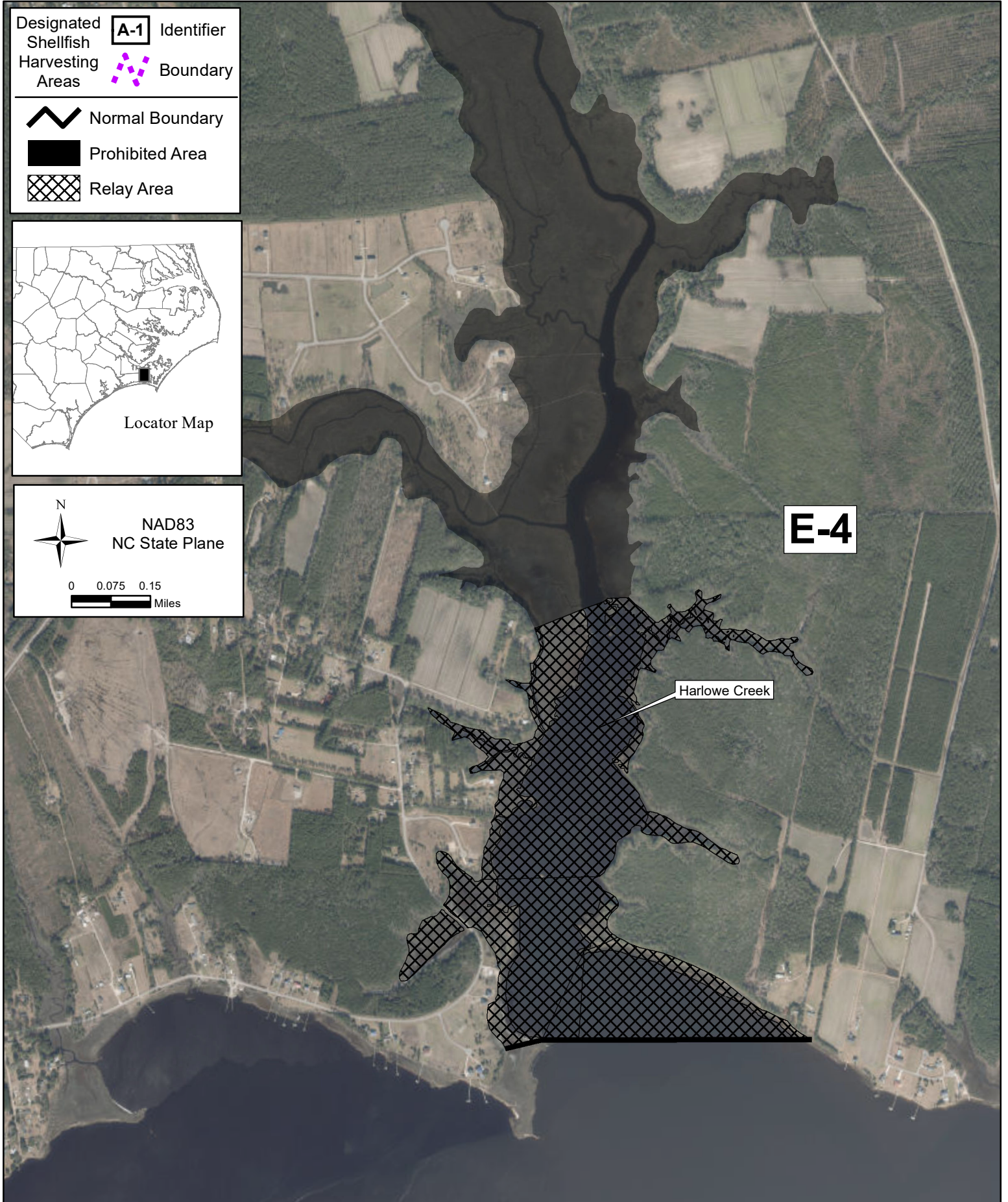
DESIGNATED RELAY AREAS FOR HAND HARVEST OF CLAMS AND OYSTERS

Map 1 - Harlowe Creek

Area E-4: Newport River

(Prohibited areas are black; areas opened
for relay operations are hatched.)

COUNTY: CARTERET

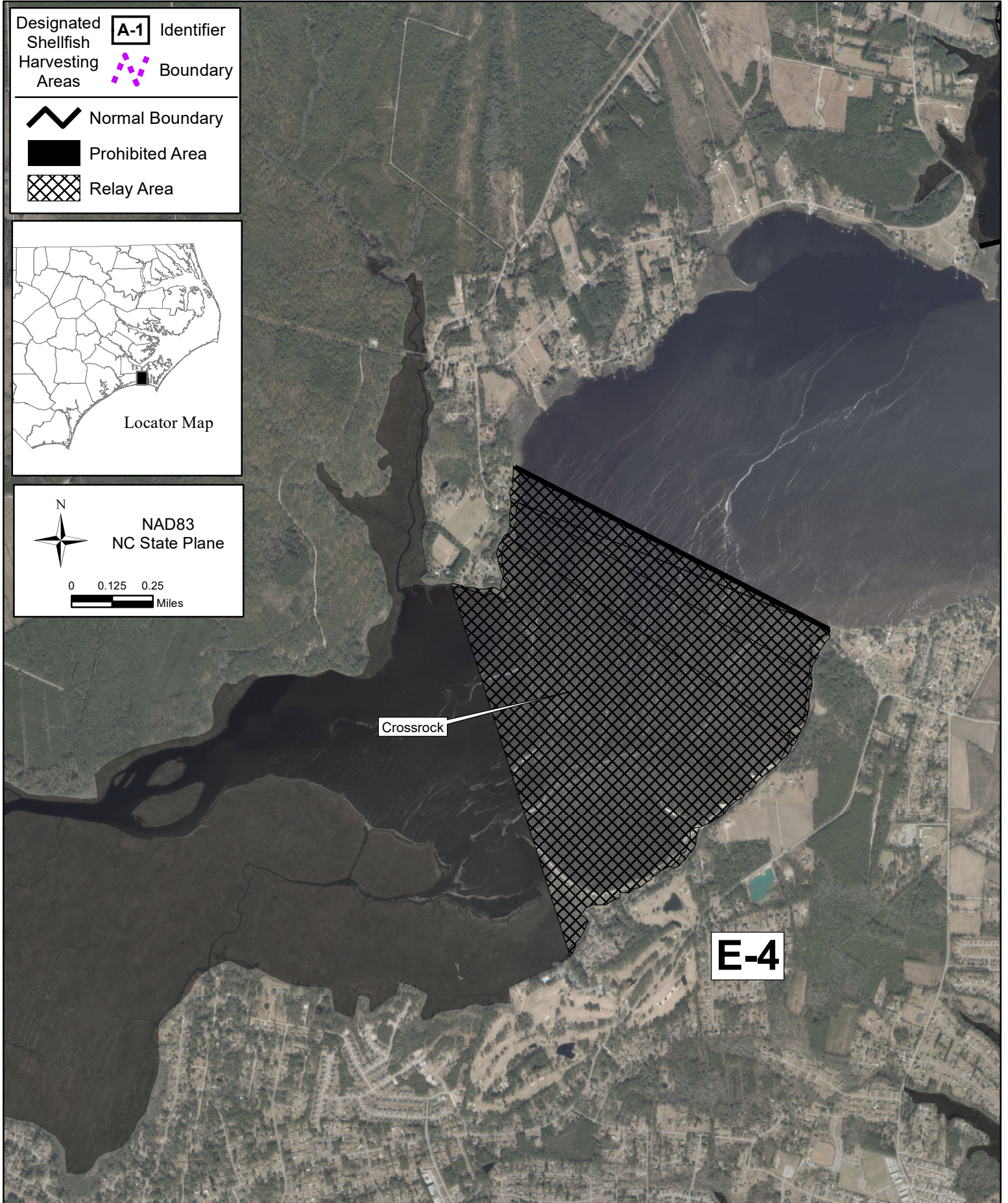


DESIGNATED RELAY AREAS FOR HAND HARVEST OF CLAMS AND OYSTERS

(Prohibited areas are black; areas opened
for relay operations are hatched.)

COUNTY: CARTERET

Map 2 - Crossrock
Area E-4: Newport River

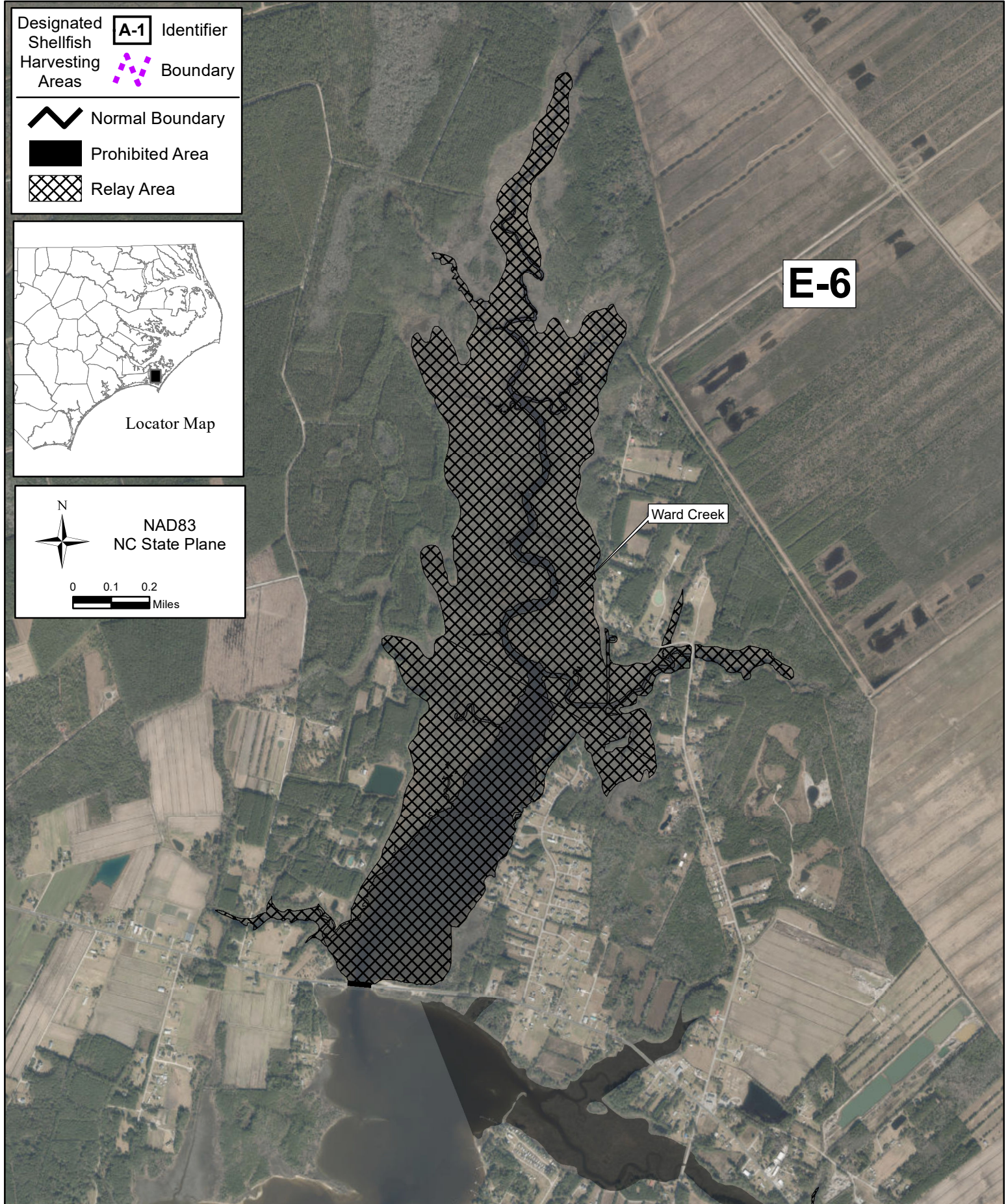


DESIGNATED RELAY AREAS FOR HAND HARVEST OF CLAMS AND OYSTERS

(Prohibited areas are black; areas opened
for relay operations are hatched.)

COUNTY: CARTERET

Map 3 - Ward Creek Area E-6

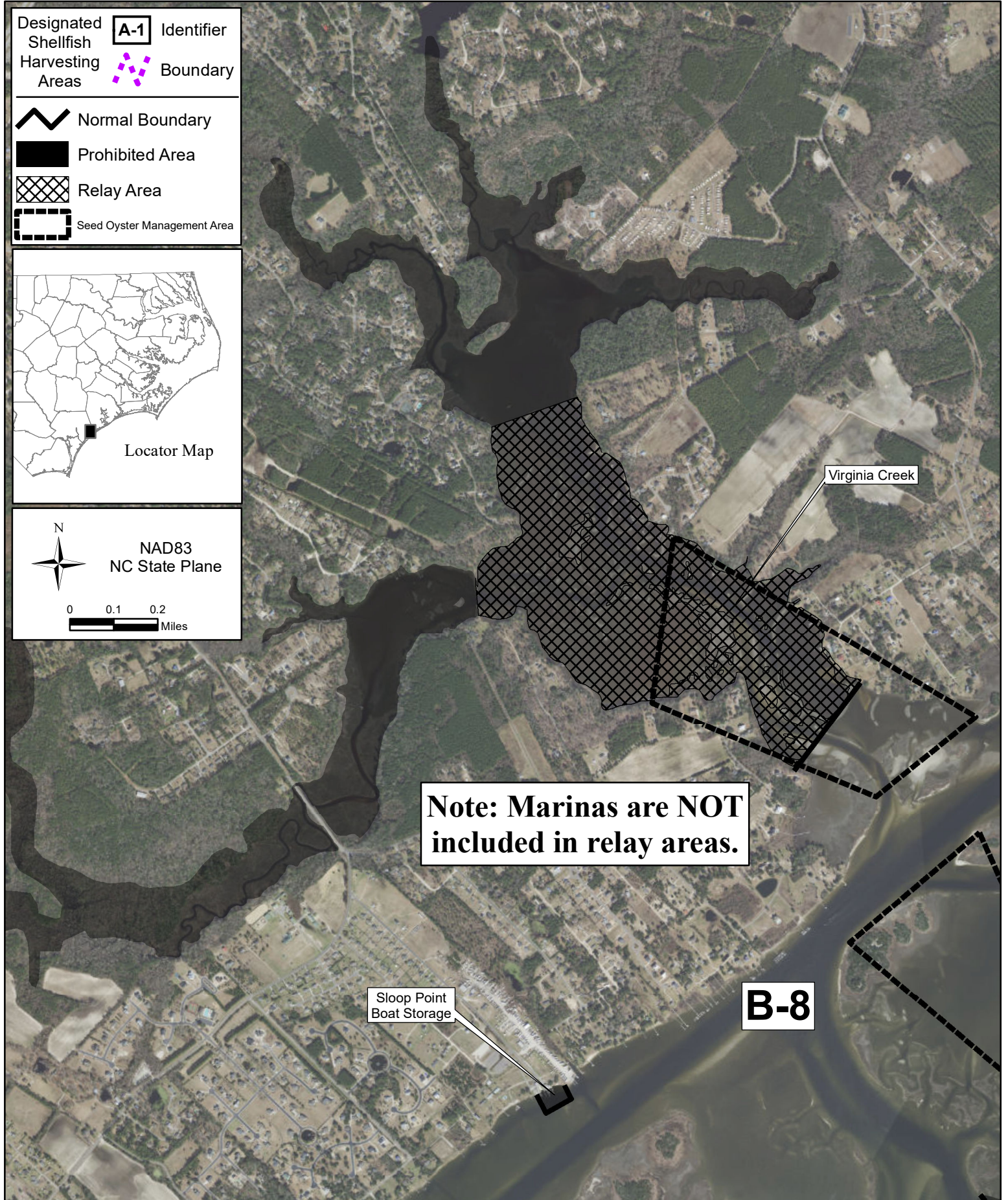


DESIGNATED RELAY AREAS

Map 4 - Virginia Creek Area B-8

(Prohibited areas are black; areas opened
for relay operations are hatched.)

COUNTY: PENDER



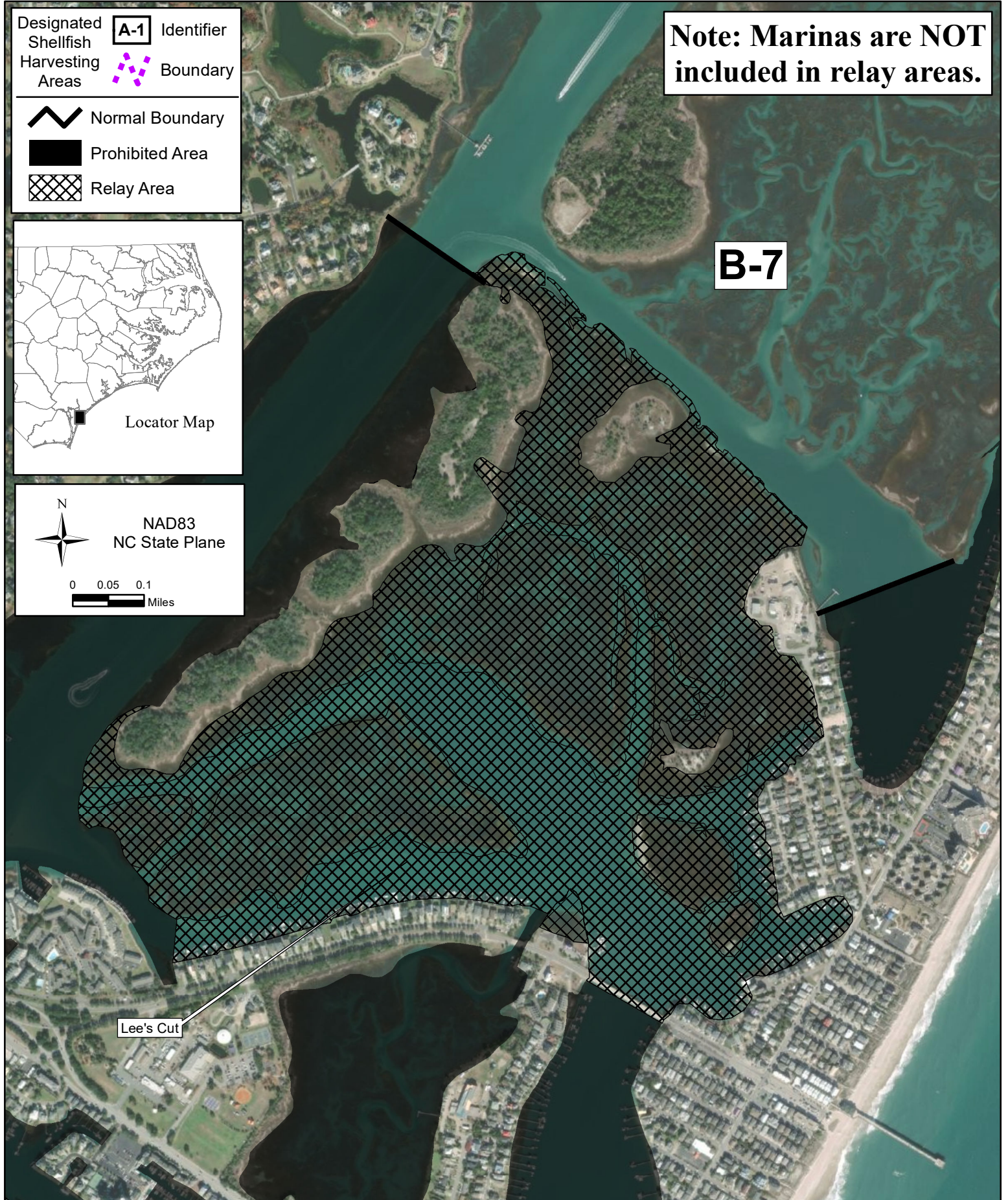
DESIGNATED RELAY AREAS

Map 5 - Lee's Cut

Area B-7: Wrightsville Beach

(Prohibited areas are black; areas opened for relay operations are hatched.)

COUNTY: NEW HANOVER



DESIGNATED RELAY AREAS

Map 6 - Fullard Creek Area C-1

(Prohibited areas are black; areas opened
for relay operations are hatched.)

COUNTY: ONSLOW

