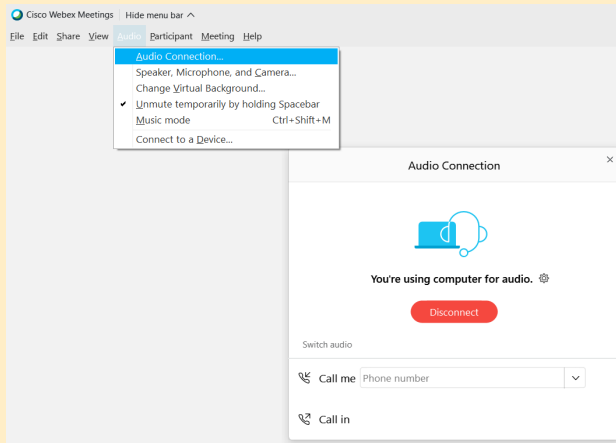


Troubleshooting

If you are having trouble hearing the meeting, try having the computer call your phone. Click on the audio tab at the top of the screen. In the dropdown box, click on Audio Connection, and type in your telephone number in the Call Me field.



Written comments will be accepted up to 24 hours following this hearing and may be submitted by mail or online at:

N.C. Division of Marine Fisheries
Shellfish Lease and Aquaculture Program
P.O. Box 769
Morehead City, NC 28557



<https://deq.nc.gov/new-hanover-county-shellfish-lease-hearing-public-comment-form>

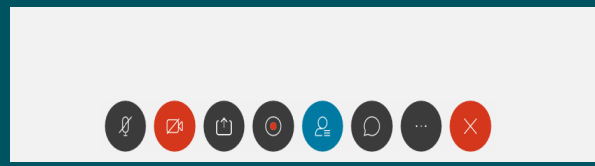
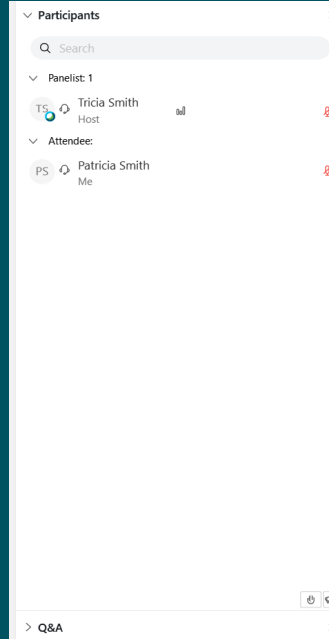


N.C. Division of Marine Fisheries Public Hearing on Proposed Shellfish Leases in New Hanover County January 5, 2022 at 6 p.m.

We will take attendance at the beginning of the meeting and ask if you would like to speak. Later in the meeting, we will call the names of those who indicated they would like to speak. After we complete the list, we will ask anyone else who wants to speak to raise their hands.

Raise your hand by clicking on the hand icon at the bottom of the Participants panel.

To bring up the Participants panel, hover your cursor over the bottom of the page and click on the circular icon with a drawing of a person in it.





Shellfish Lease Public Hearing

NC DEPARTMENT OF ENVIRONMENTAL QUALITY

NC Division of Marine Fisheries

New Hanover County | January 5, 2022



New Hanover County Shellfish Lease Hearing

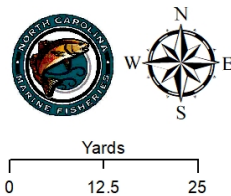
January 5, 2022

1. Kimberly Watters and Stephen Boyette applied for a Shellfish Bottom Lease (20-046BL) in Mainland Areas near Middle Sound ICW for 0.55 acres.



Proposed Lease ID/Number: 20-046BL Kimberly Watters and Steve Boyette

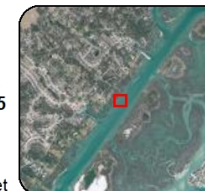
Date: 7/27/2021



▲ Adj. Proposed Lease Area
■ Adj. Proposed Lease Area

Acreage: 0.55

Coordinate System: NAD 1983 StatePlane North Carolina FIPS 3200 Feet



New Hanover County Shellfish Lease Hearing

January 5, 2022

1. Kimberly Watters and Stephen Boyette applied for a Shellfish Bottom Lease (20-046BL) in Mainland Areas near Middle Sound ICW for 0.55 acres.



Shellfish Lease Program: <https://deq.nc.gov/shellfish-lease>

Shellfish Aquaculture Tool: <https://arcg.is/0LD5zS>

Frequently Asked Questions (FAQs): <https://deq.nc.gov/lease-faqs>

Contact Information:

Owen Mulvey-McFerron

Program Coordinator

Shellfish Lease Program

NC Division of Marine Fisheries

Office: 252-808-8061

Cell: 252-269-3082

Marla Chuffo

Administrative Specialist I

Shellfish Lease Program

NC Division of Marine Fisheries

Office: 252-808-8048

Cell: 252-725-0804

Teri Dane

Conservation Biologist I

Shellfish Lease Program

NC Division of Marine Fisheries

Office 252-808-8167

Cell: 252-725-0675

DMF.Leasingshellfish@ncdenr.gov