



Stock Assessment of Southern Flounder in the South Atlantic

N.C. Marine Fisheries Commission Meeting | Laura M. Lee

February 15, 2018



Department of Environmental Quality

Marine Fisheries

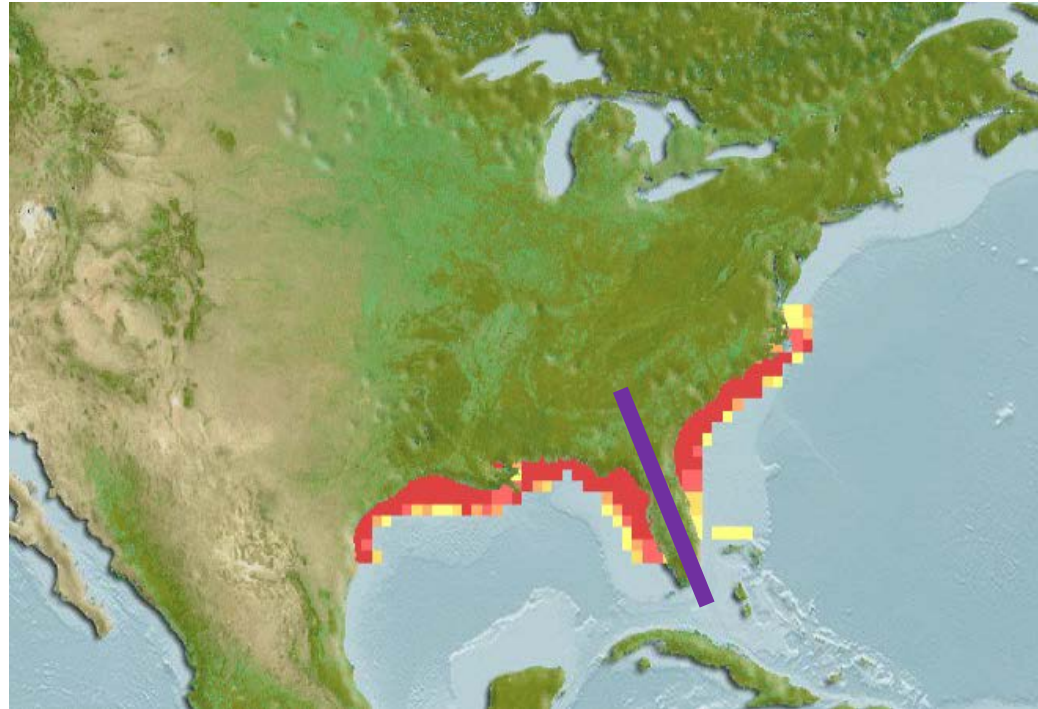


Acknowledgements

- North Carolina Division of Marine Fisheries Plan Development Team
- North Carolina Division of Marine Fisheries Management Review Team
- Other North Carolina Division of Marine Fisheries staff
- Steve Arnott and Joey Ballenger, South Carolina Department of Natural Resources
- Ryan Harrell and BJ Hilton, Georgia Department of Natural Resources
- Shanae Allen and Behzad Mahmoudi, Florida Fish and Wildlife Conservation Commission
- Fred Scharf, University of North Carolina at Wilmington
- Steve Midway, Louisiana State University
- Jeff Kipp, Atlantic States Marine Fisheries Commission
- Rick Methot, NOAA Fisheries
- Peer reviewers: Katie Drew, Kevin Craig, Mark Fisher, and Gary Shepherd

Life History

- Demersal (bottom-dwelling)
- Marine and brackish water
- Female max age and size: 9 years and 33 inches
- Male max age and size: 6 years and 20 inches
- Female length at 50 percent maturity ~16 inches



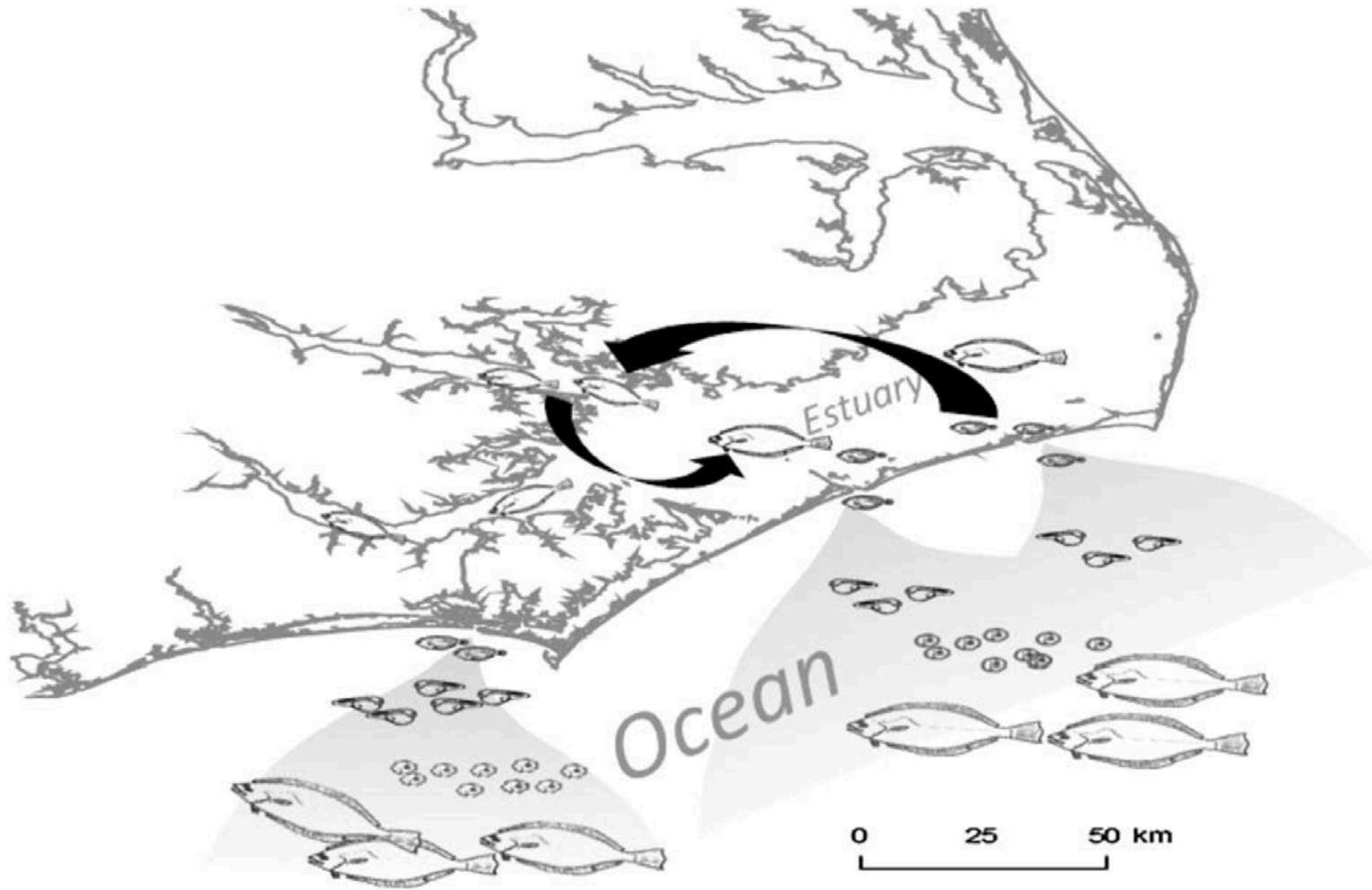
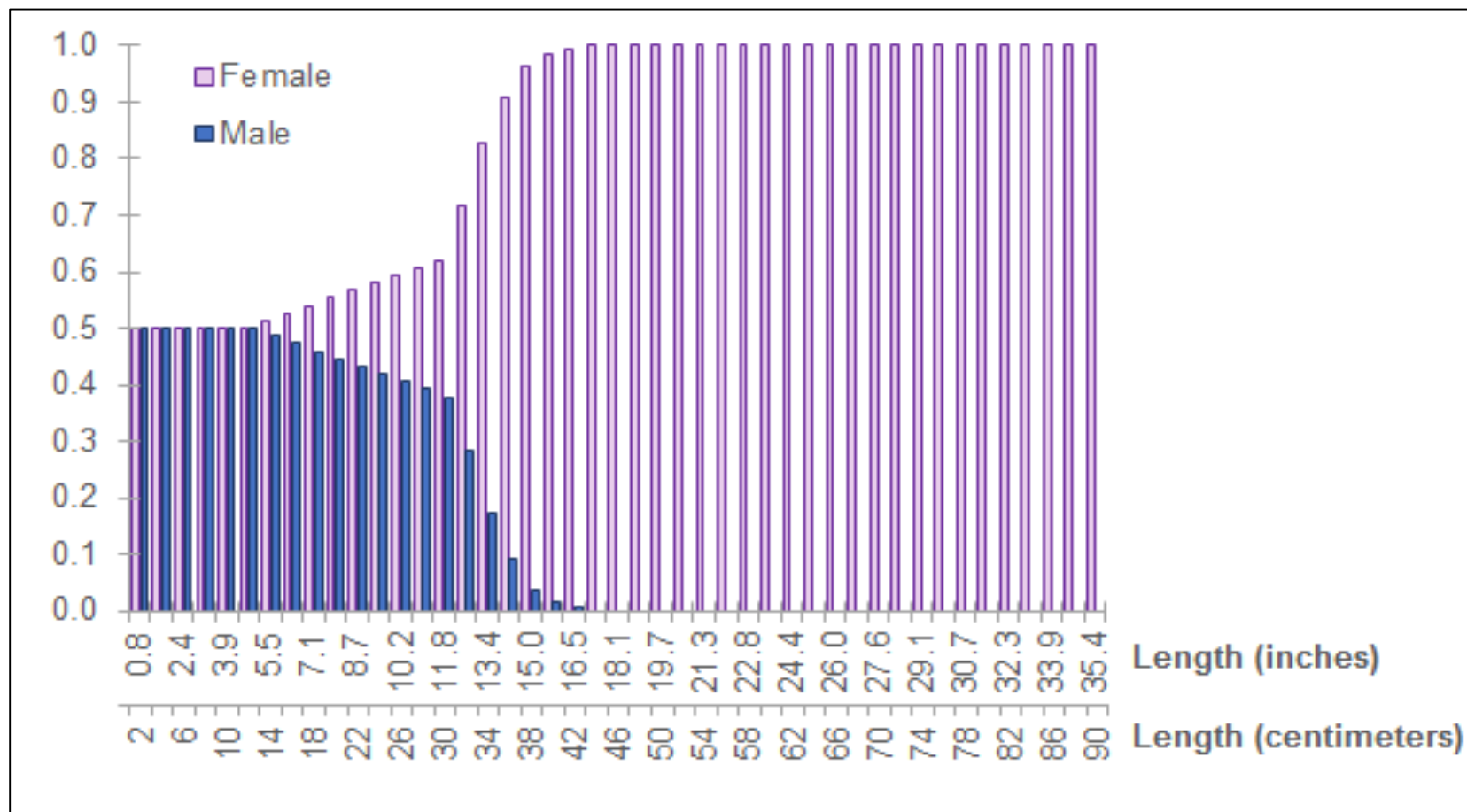


Fig. 1. Generalized life-history cycle for southern flounder off North Carolina and the Southeast US Atlantic continental shelf.

Sex Ratio at Length



NCDMF Assessment History

- Assessments completed in 2005, 2009, and 2014
- All concluded stock is overfished and overfishing was occurring
- Most recent assessment (2014) not considered suitable for management by the N.C. Division of Marine Fisheries due to the assumed definition of unit stock
- Recommendation to expand unit stock based on genetics and tagging data

January 2018 Stock Assessment

- Pooled effort of multiple state agencies and universities
 - North Carolina
 - South Carolina
 - Georgia
 - Florida
 - University of North Carolina at Wilmington
 - Louisiana State University
 - Atlantic States Marine Fisheries Commission
- Includes fisheries-dependent and fisheries-independent data from throughout the South Atlantic
- Presented to peer review panel in December 2017
 - First public peer review
 - Three-day workshop

Peer Review

- Accepted the final assessment model (presented here), though use contingent on update
- Endorsed basing management on a more timely assessment (update using data through 2017)
- Update should incorporate expected changes to recreational catch estimates, if available

What is a Model

- A simple representation of a complex process
- Assessment model data needs
 - Catch—the amount of fish removed from a stock by fishing
 - Abundance—relative index of the number or weight of fish in a stock
 - Biology—provides information on growth, maturity, and natural mortality
- Data types
 - Fisheries-dependent
 - Fisheries-independent

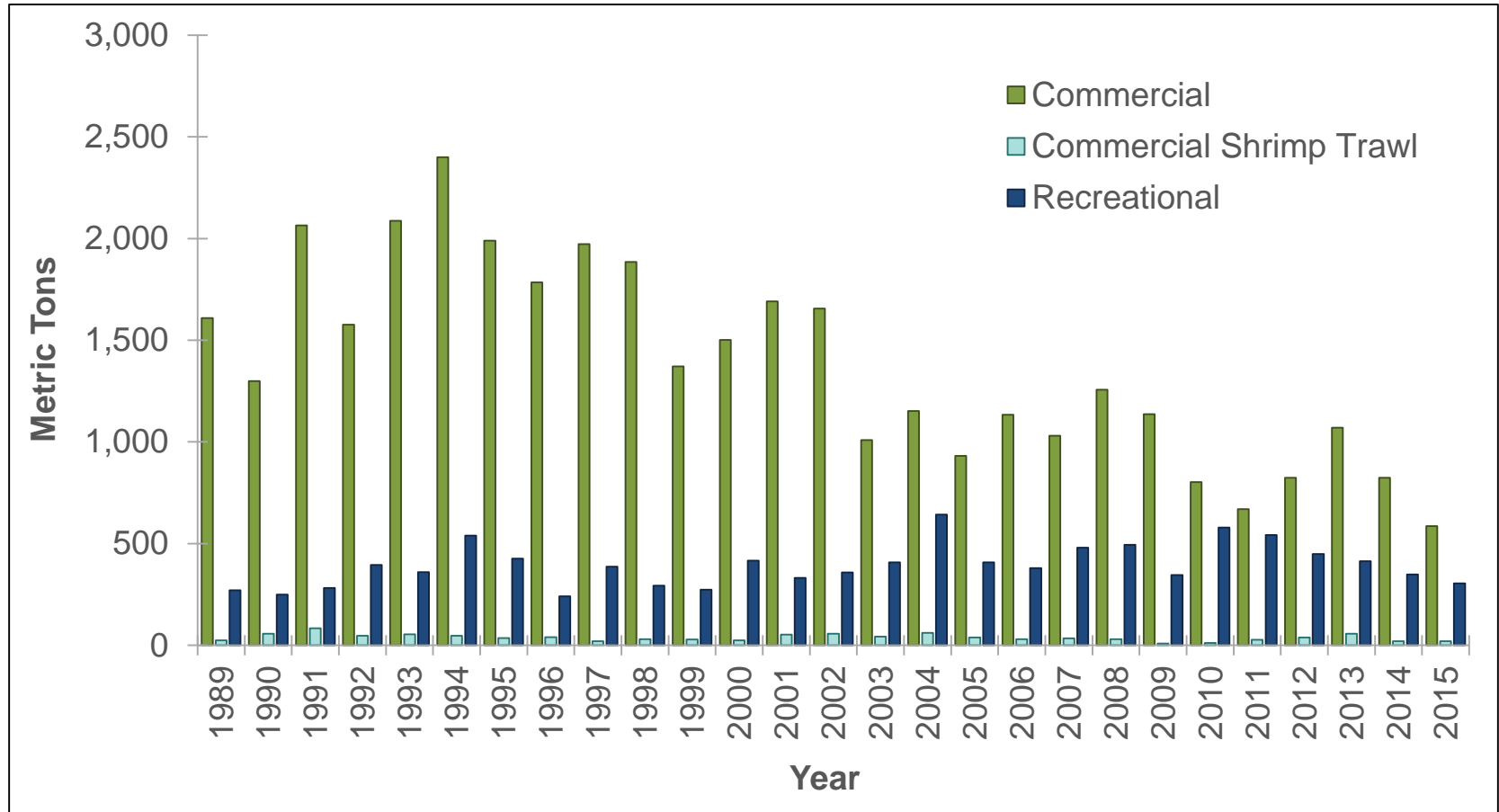
Model Structure

- Unit stock: North Carolina through the east coast of Florida
- Calendar year: 1989 through 2015
- Birth date: Jan. 1
- Gender: Sexes combined
- Age range: Age-4 plus group
- Natural mortality: Age-specific

Fleets

- Commercial
 - Landings and gill-net discards (dead)
- Commercial Shrimp Trawl
 - Bycatch (dead)
- Recreational
 - Harvest and dead releases
 - Includes hook-and-line and gig catches

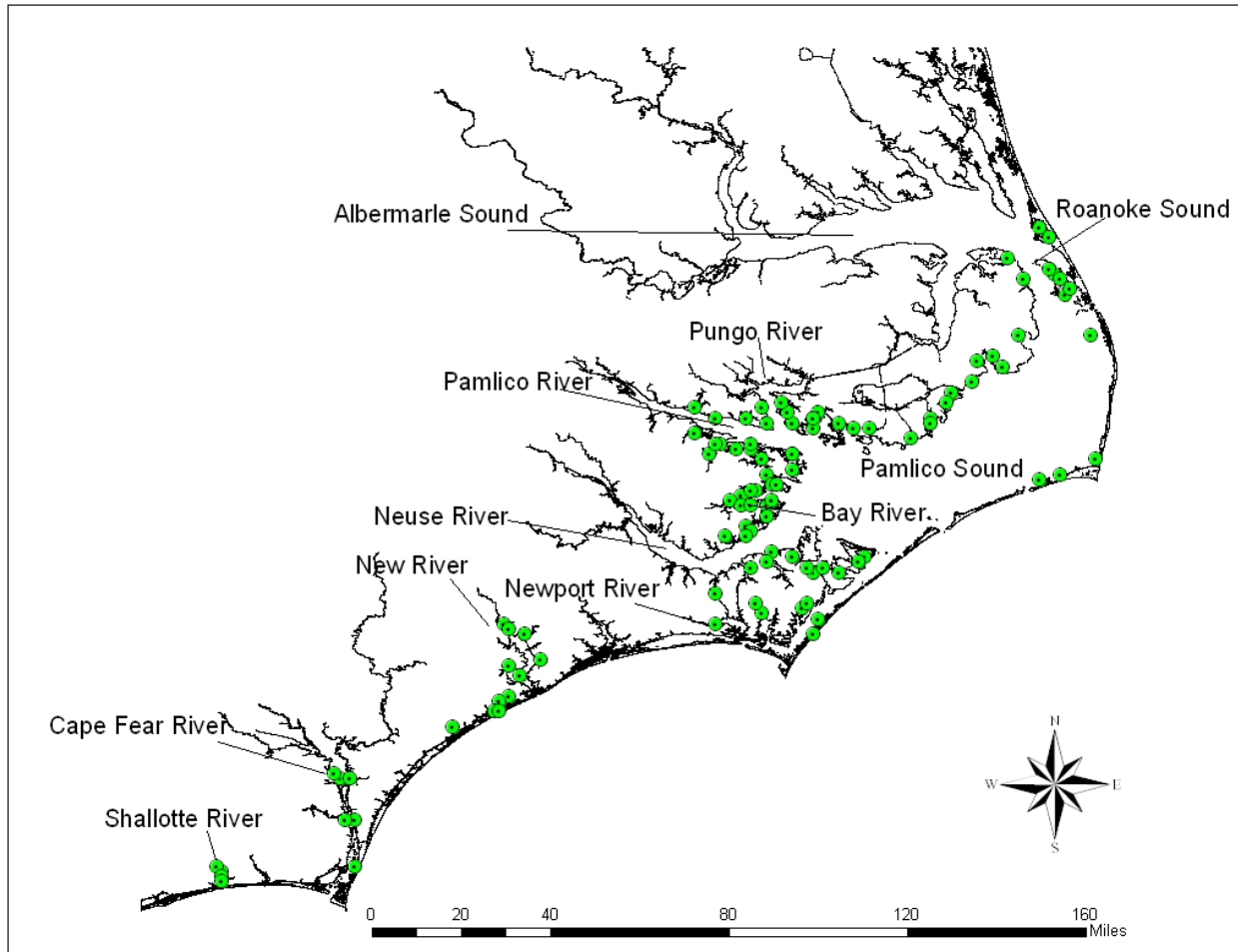
Total Landings & Discards (North Carolina to Florida East Coast)



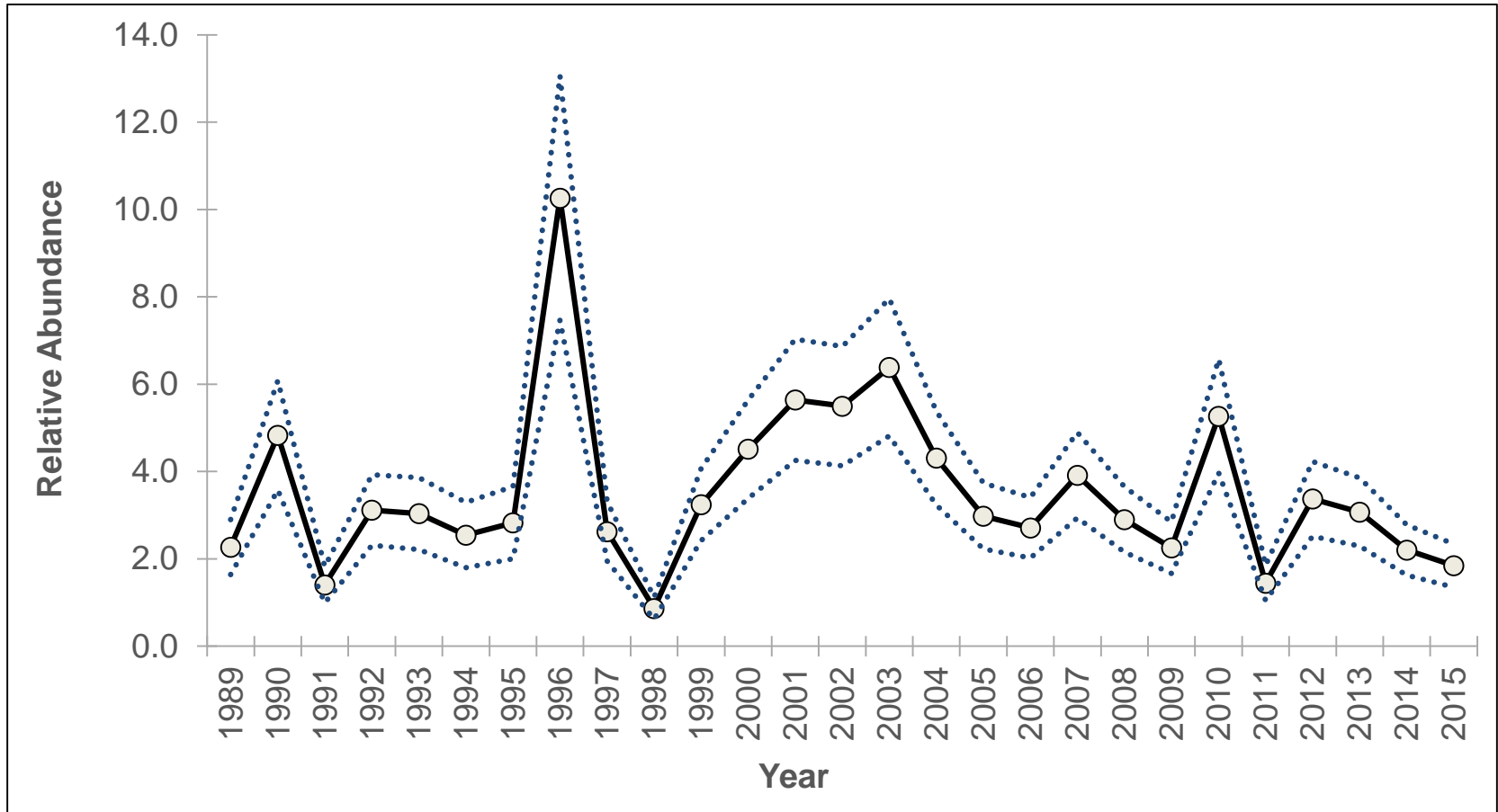
Surveys

- One juvenile survey from each state, except Georgia
- One primarily adult survey from each state
- One ocean survey (SEAMAP)

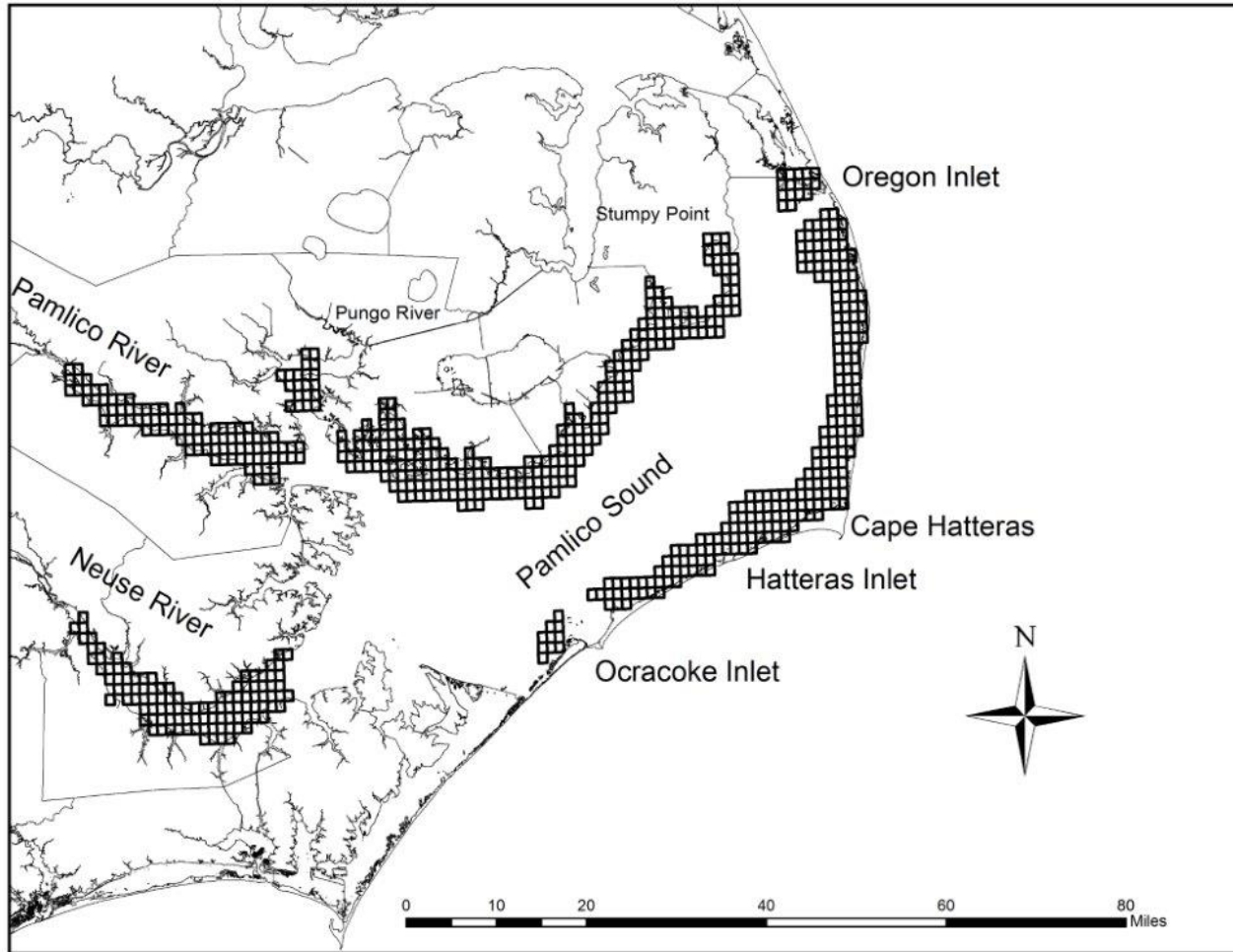
North Carolina Program 120 Trawl Survey Recruitment



North Carolina Program 120 Trawl Survey Recruitment



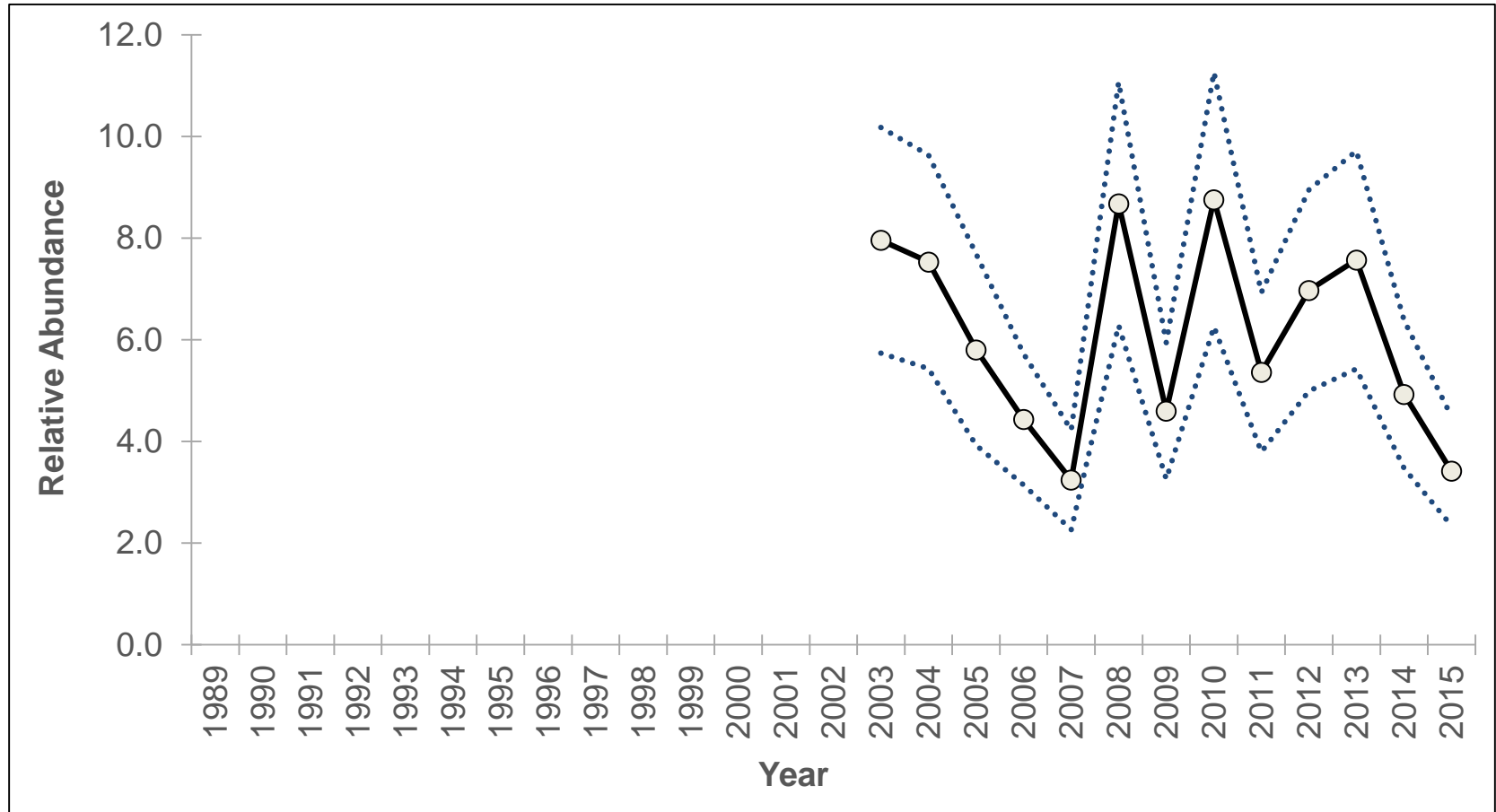
North Carolina Program 915 Gill-Net Survey Adult



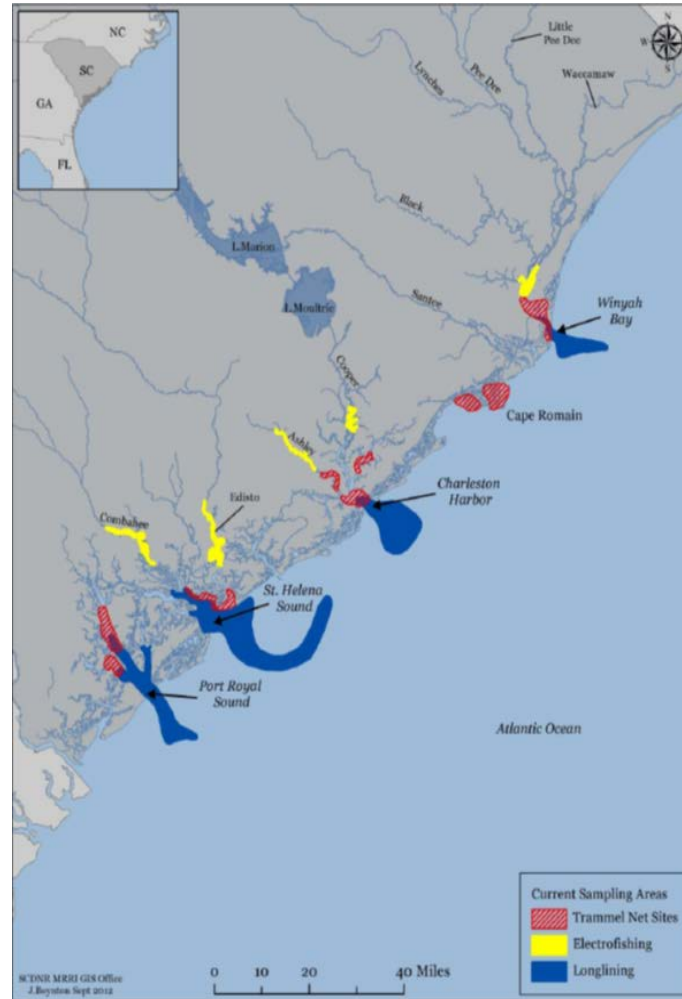
Department of Environmental Quality



North Carolina Program 915 Gill-Net Survey Adult



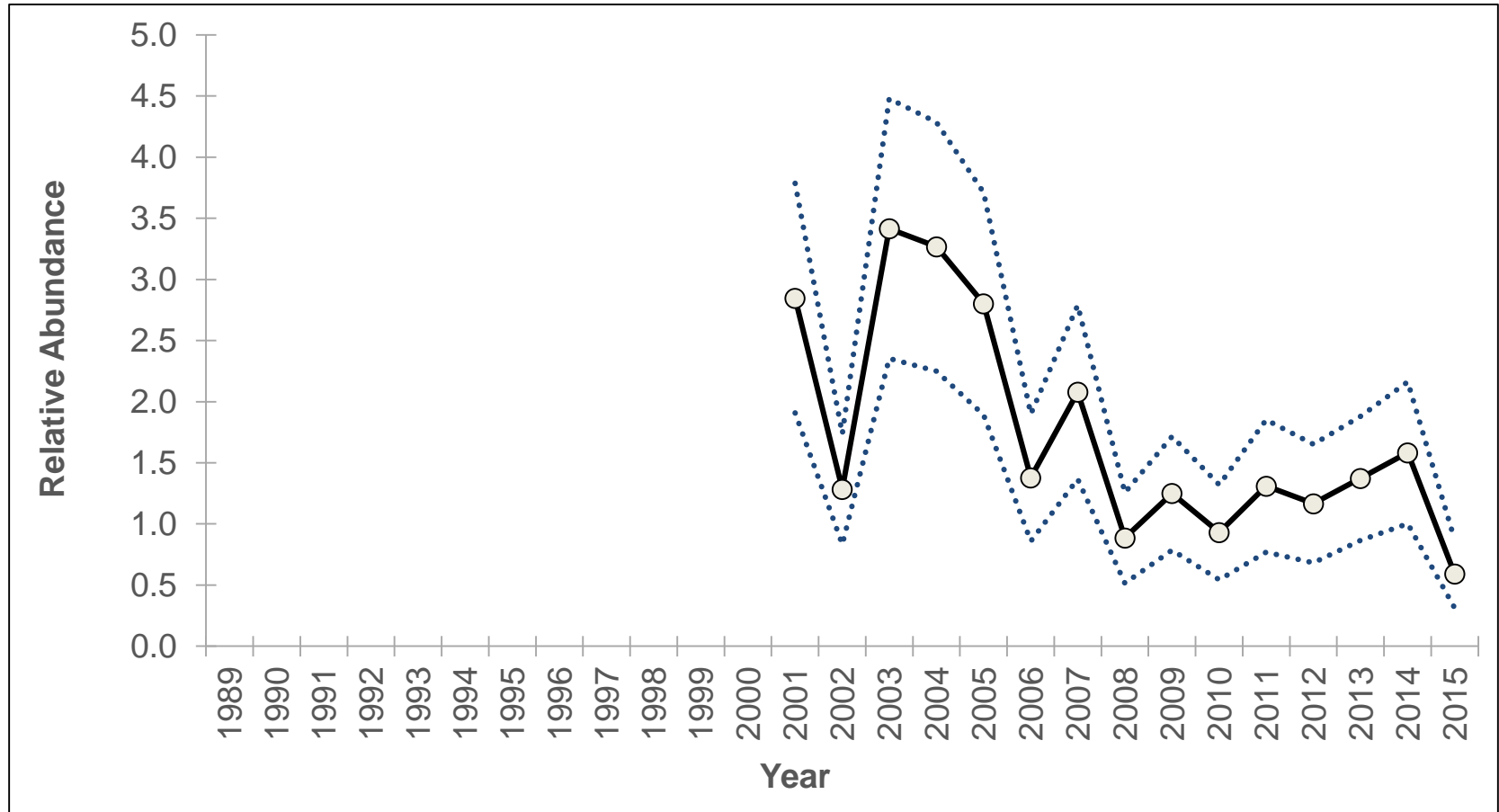
South Carolina Electrofishing Survey Recruitment



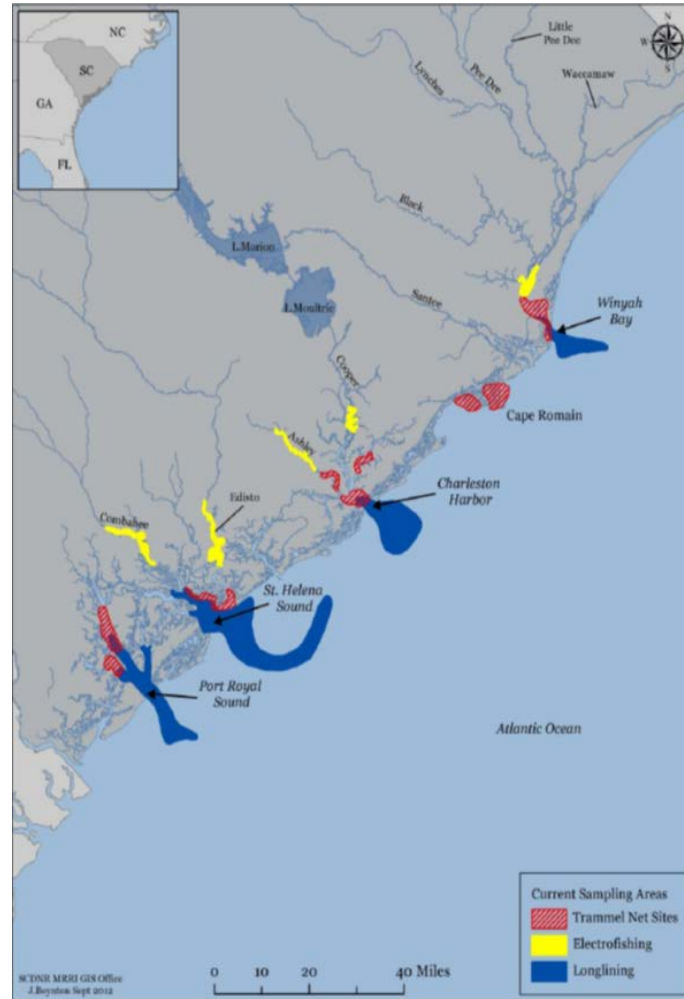
Department of Environmental Quality



South Carolina Electrofishing Survey Recruitment



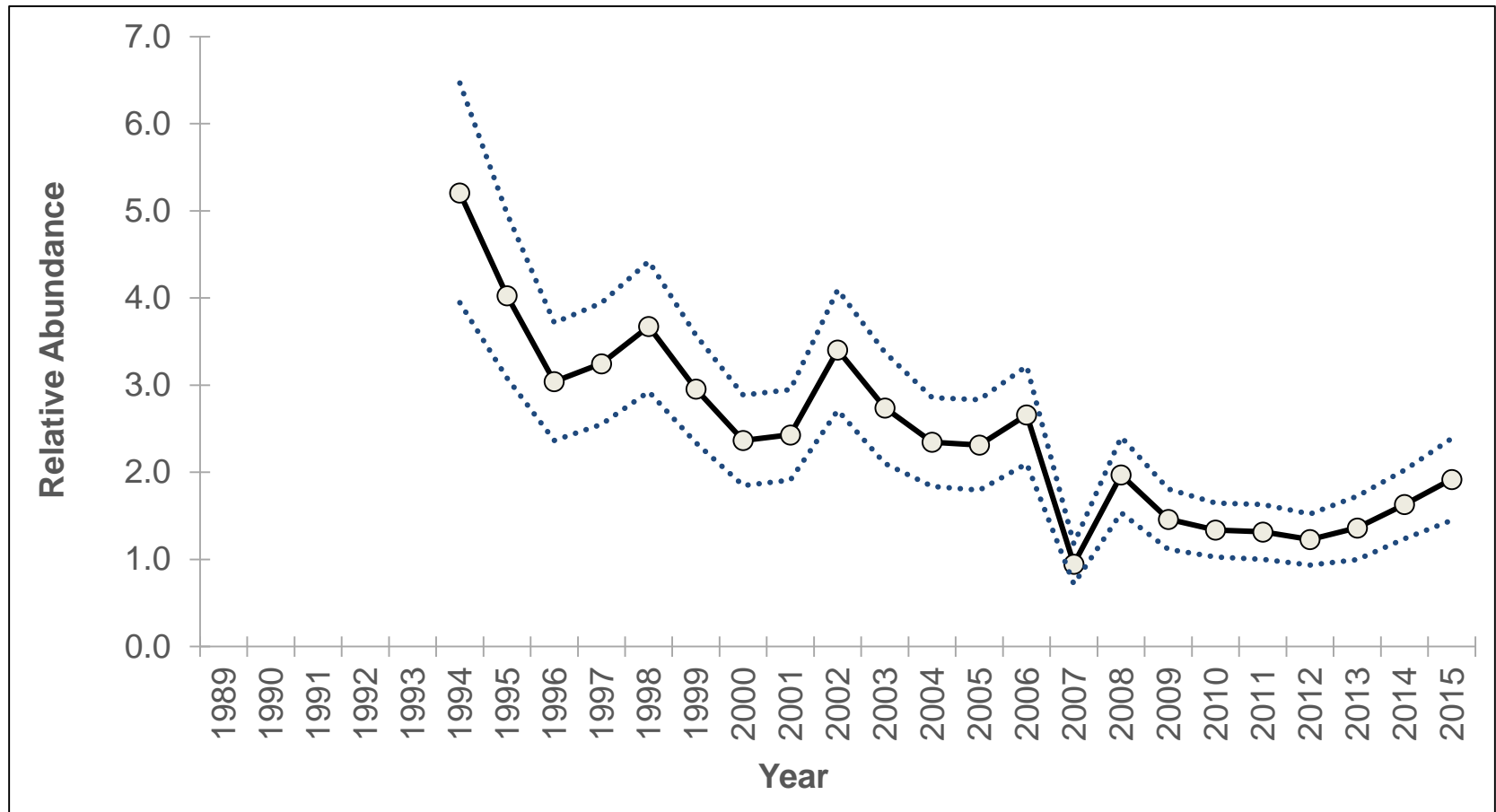
South Carolina Trammel Net Survey Adult



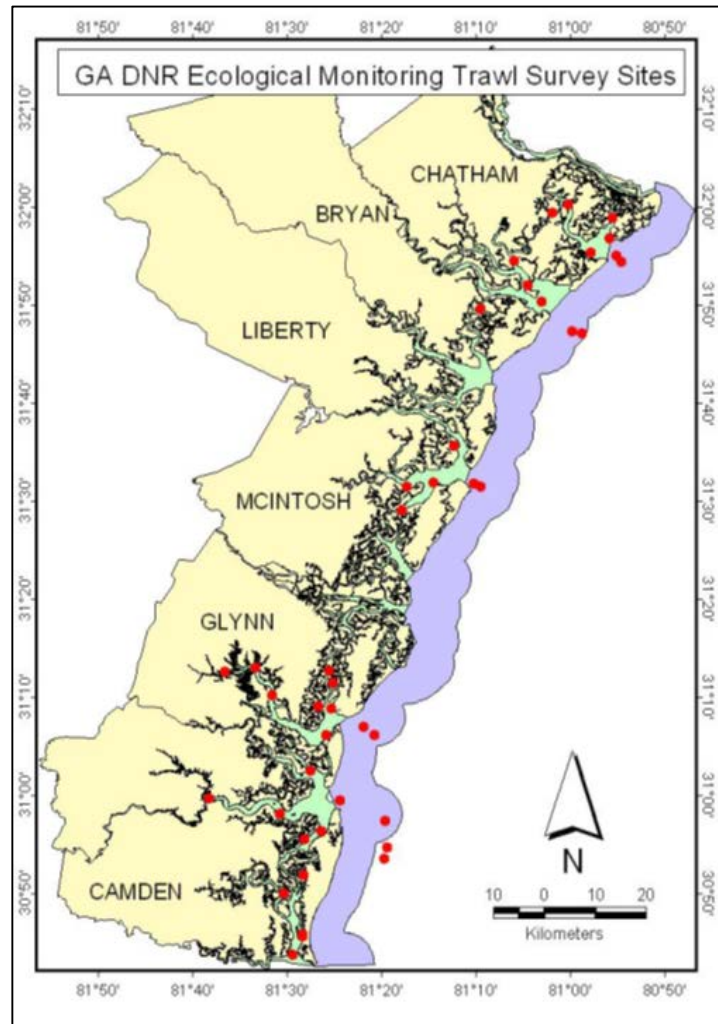
Department of Environmental Quality



South Carolina Trammel Net Survey Adult



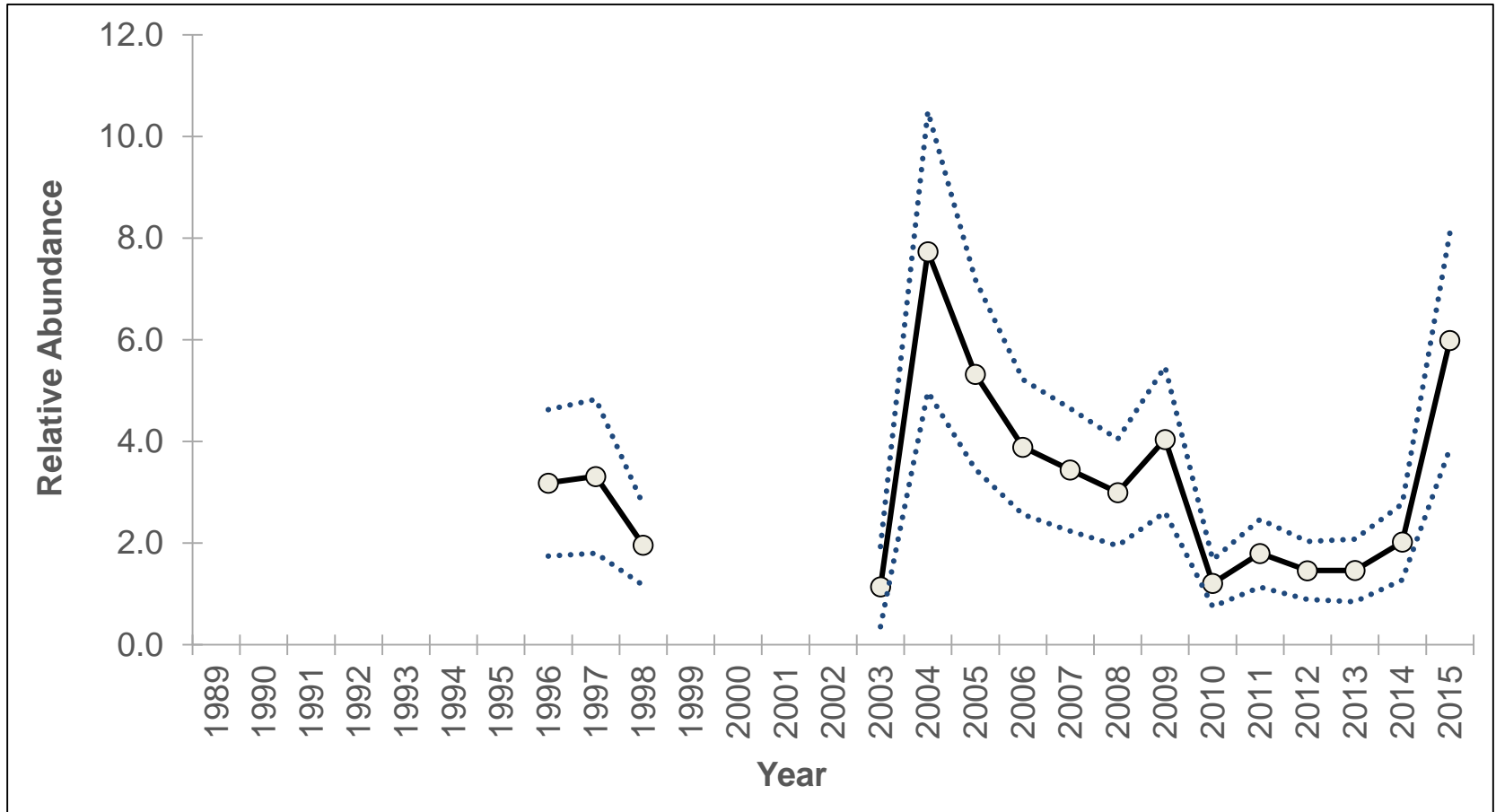
Georgia Trawl Survey Adult



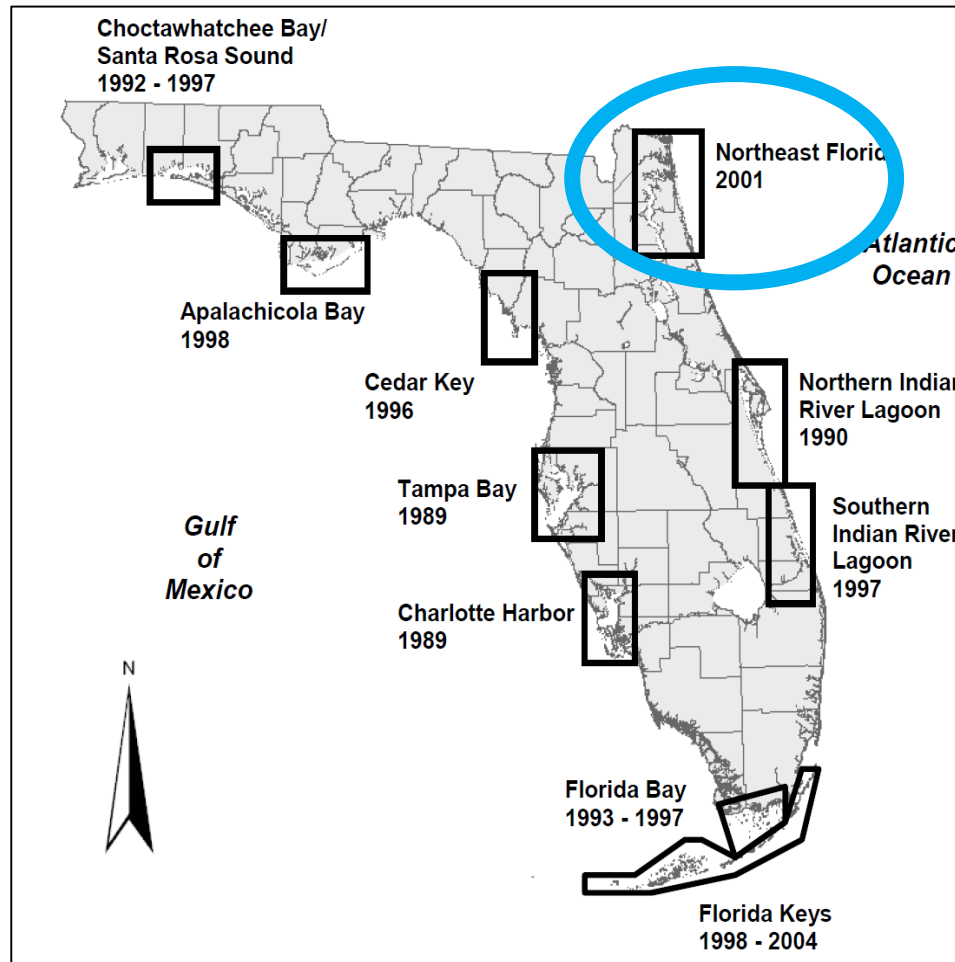
Department of Environmental Quality



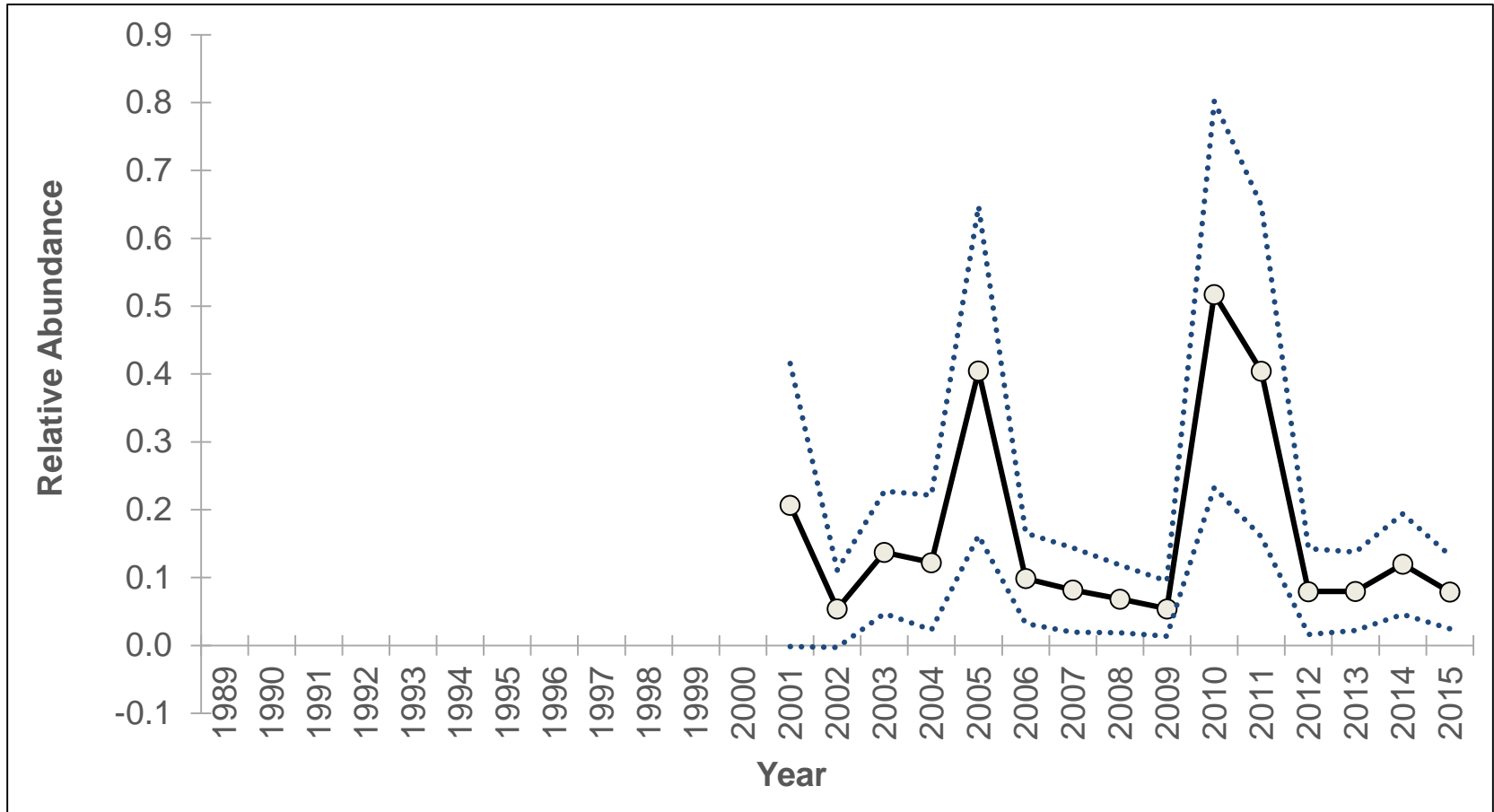
Georgia Trawl Survey Adult



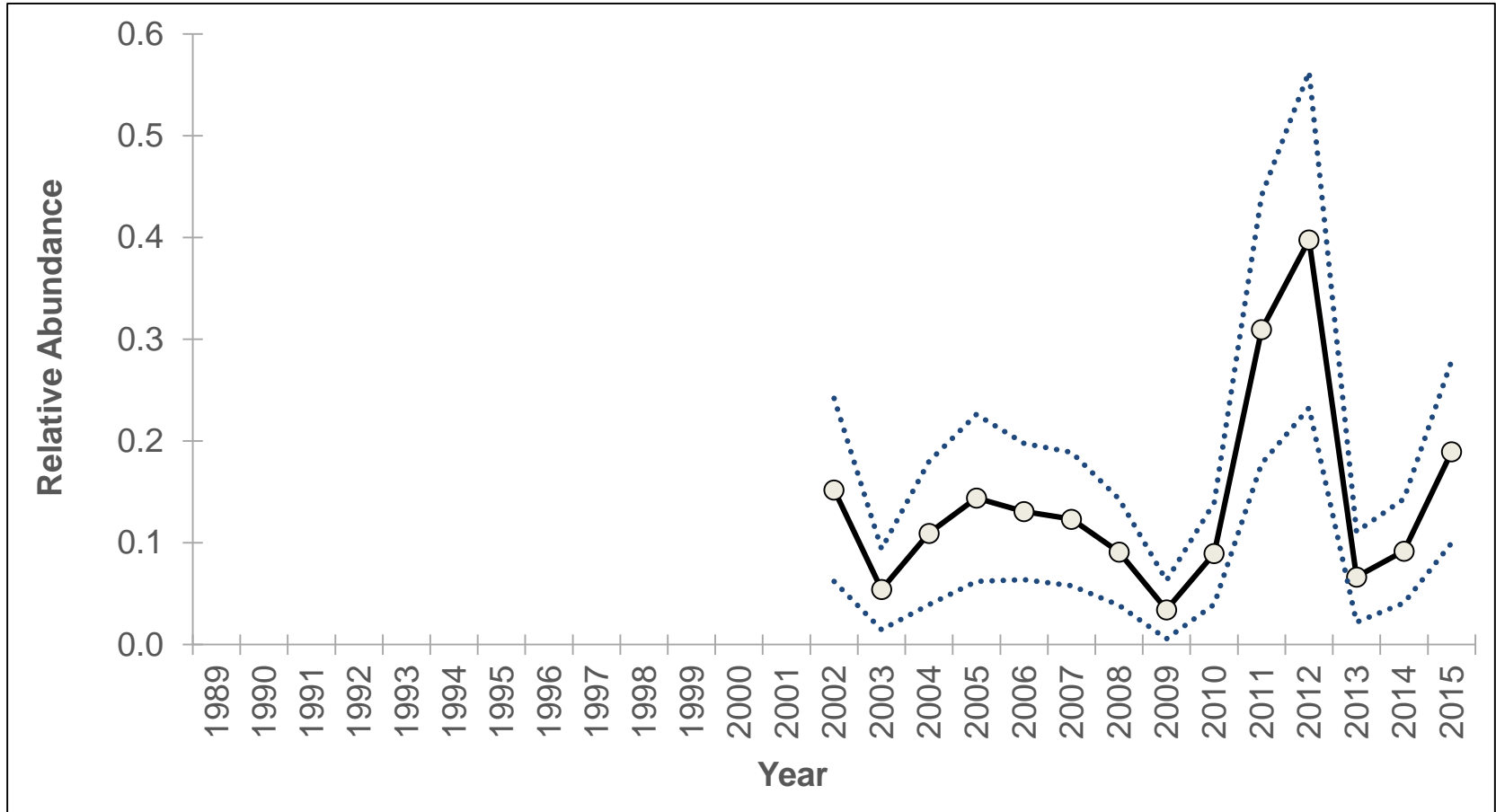
Florida Trawl Survey Recruitment & Adult



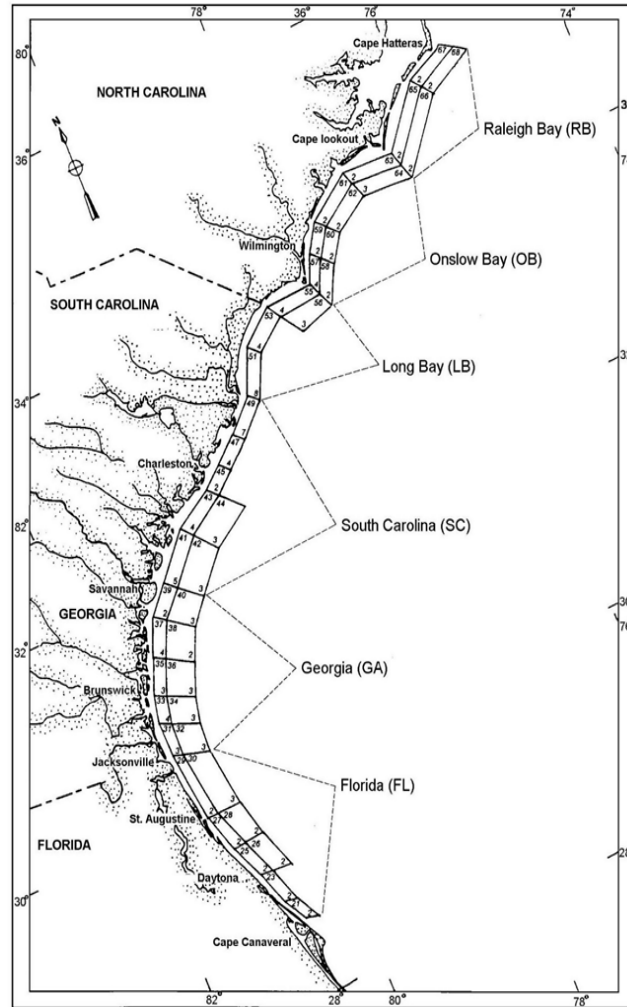
Florida Trawl Survey Recruitment



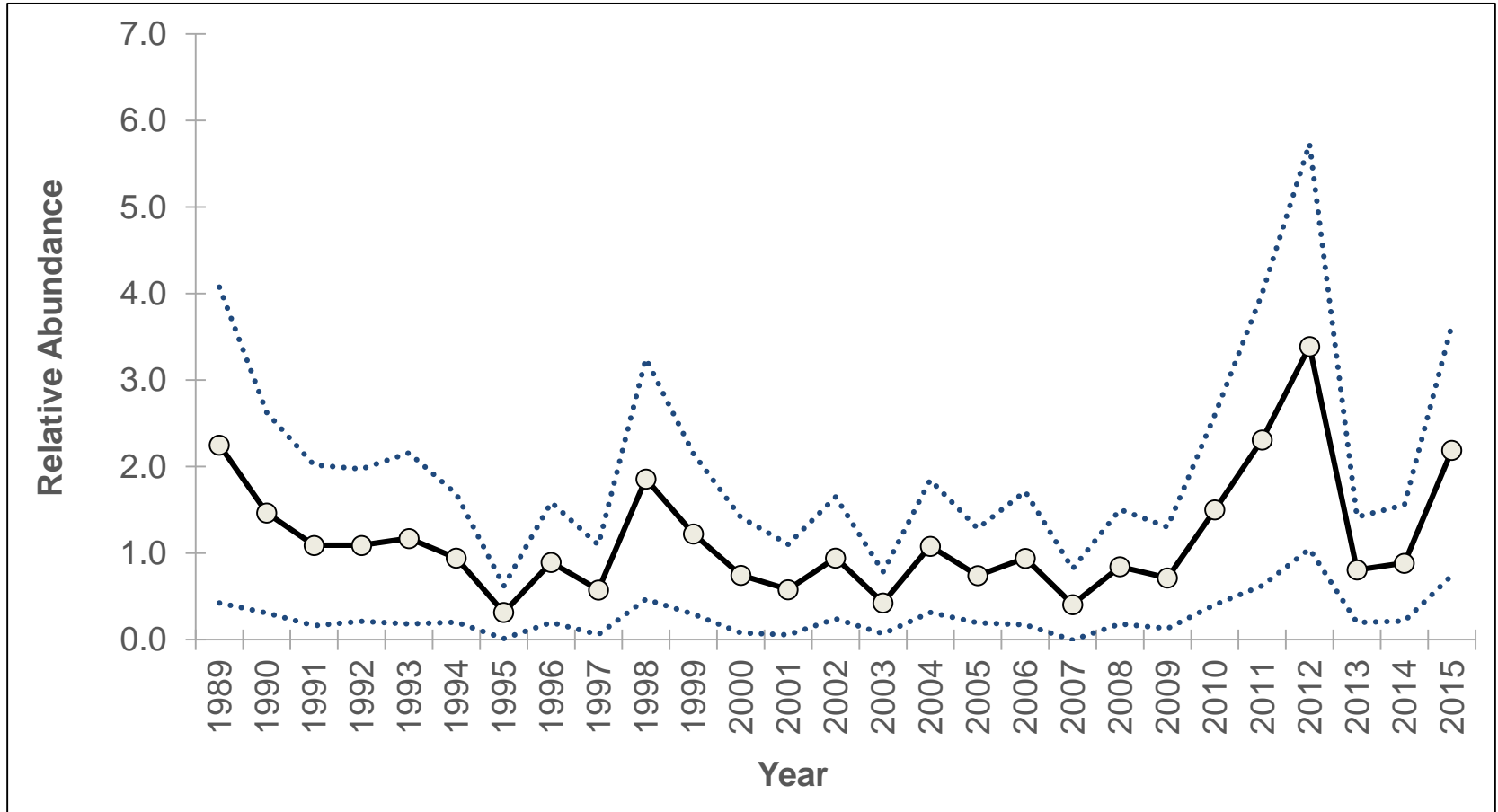
Florida Trawl Survey Adult



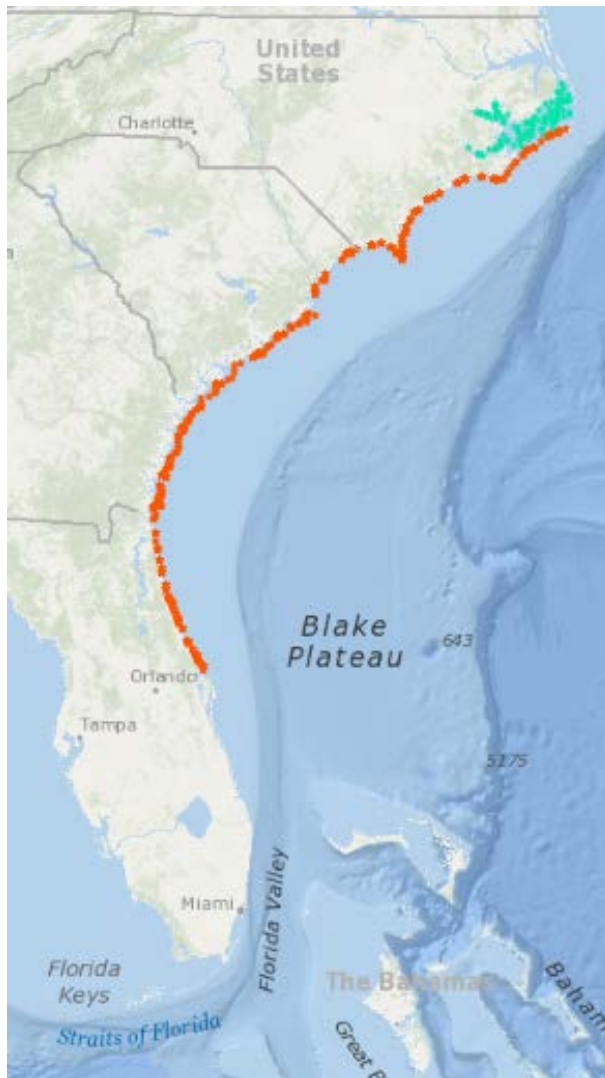
SEAMAP Trawl Survey Adult



SEAMAP Trawl Survey Adult



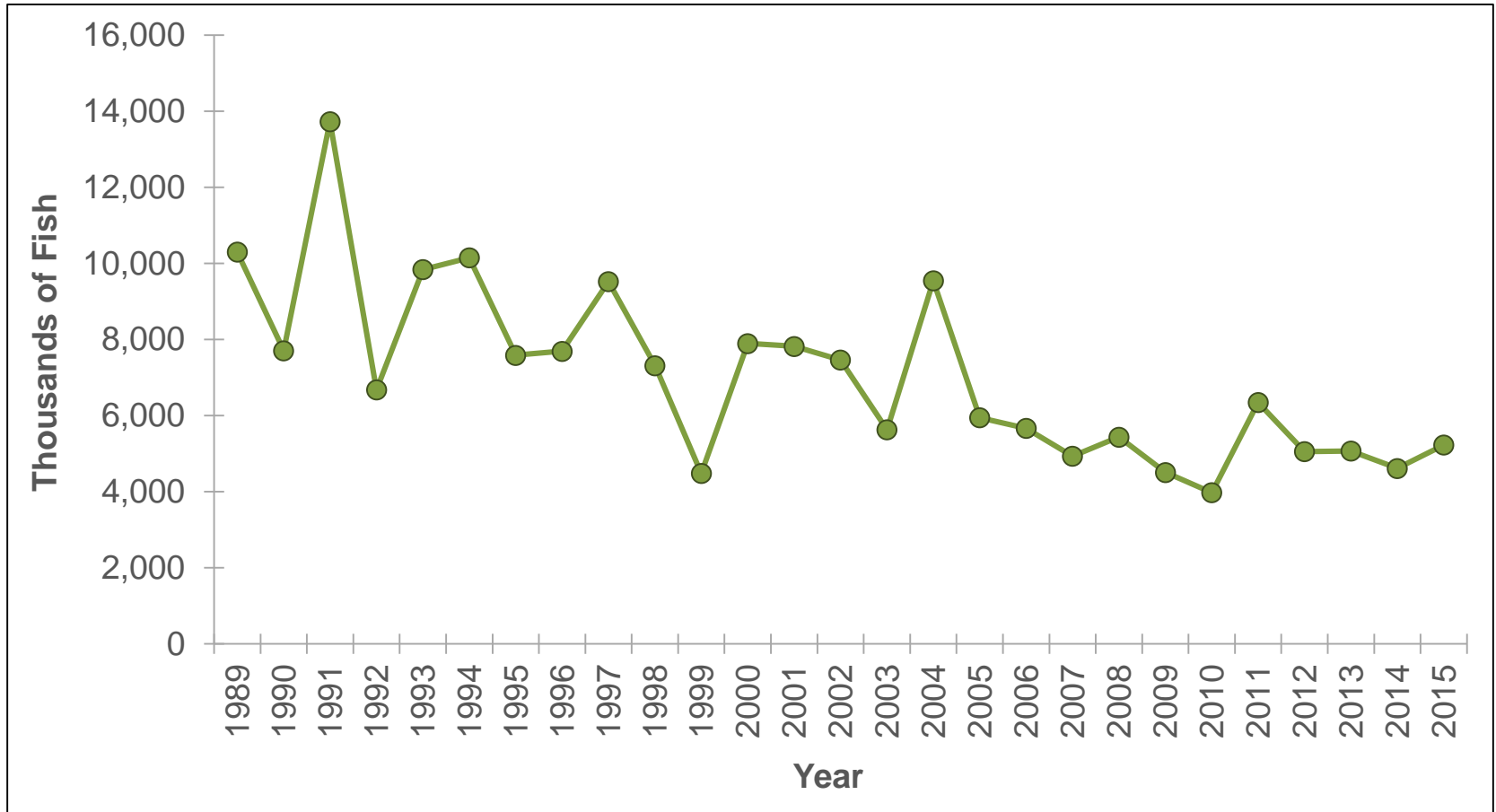
Map of All Survey Areas



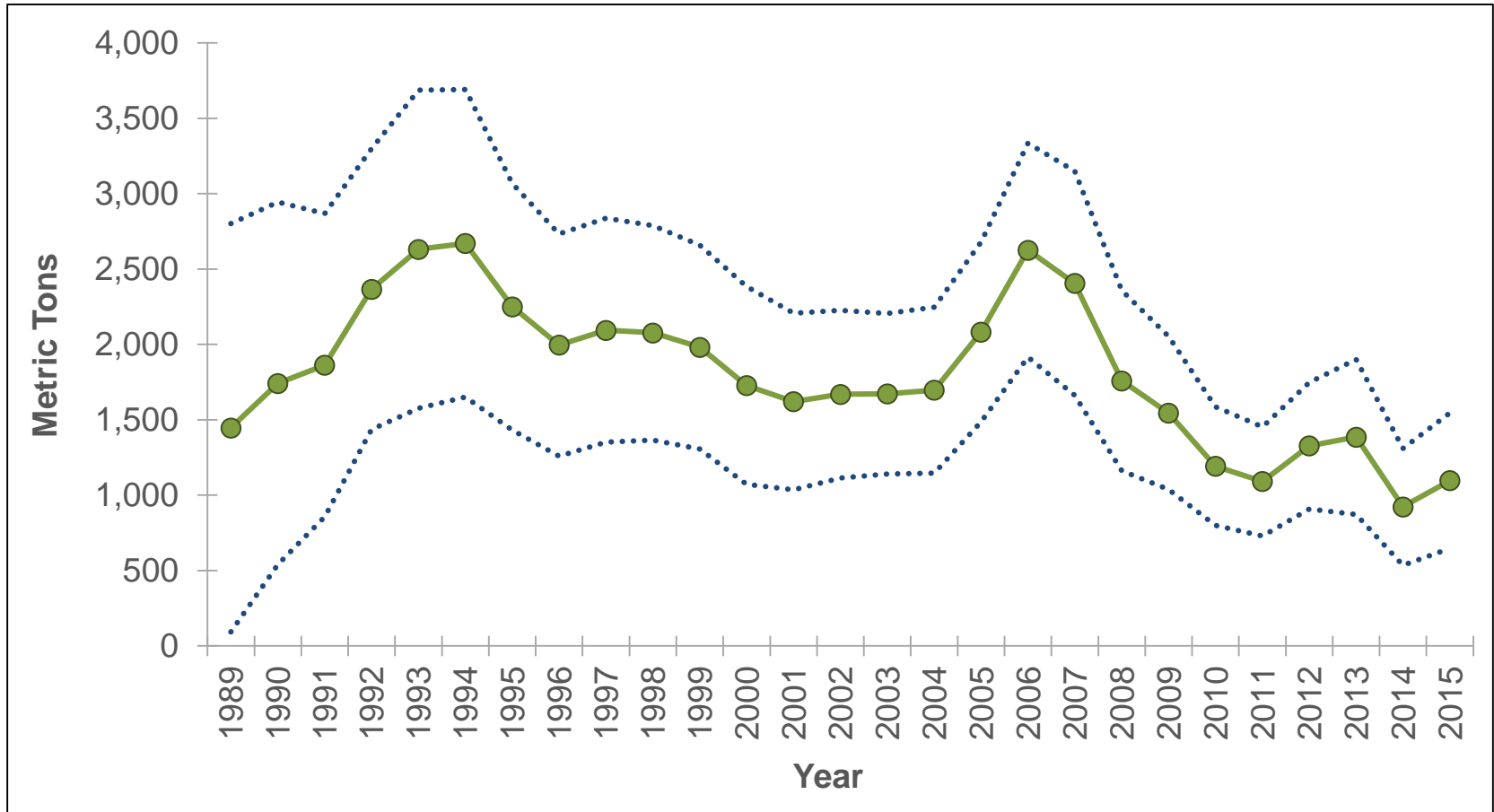
Department of Environmental Quality



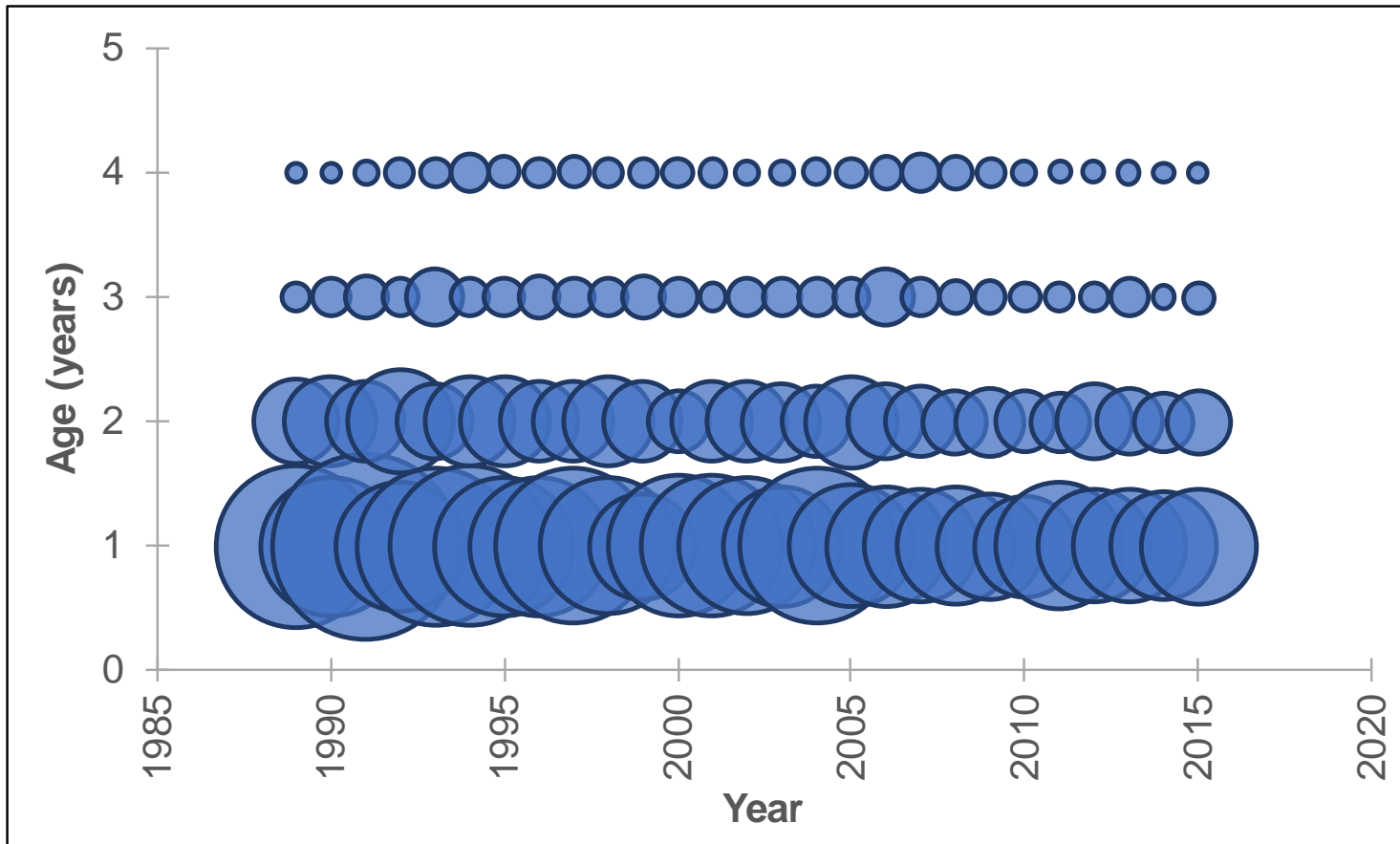
Recruitment (Age-1)



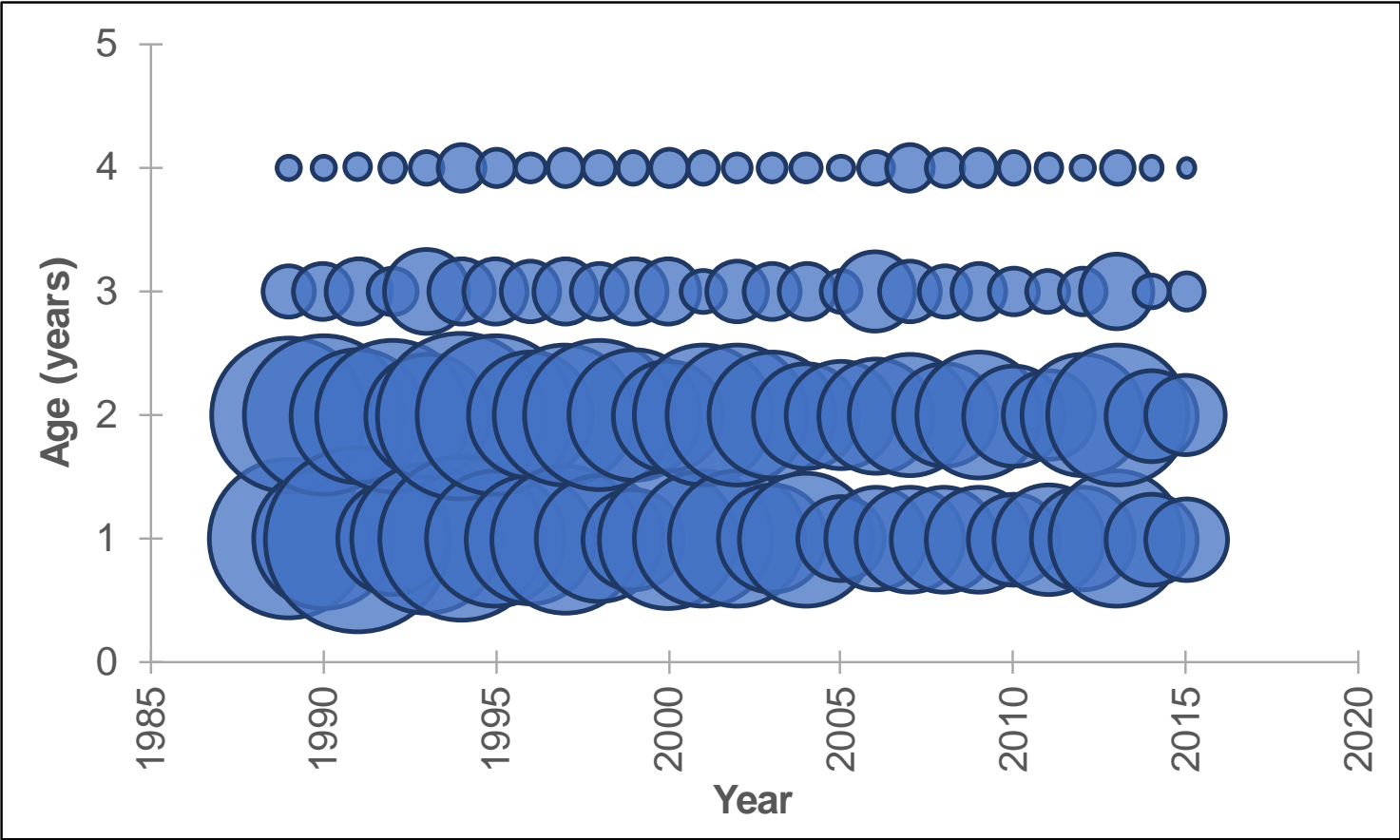
Female Spawning Stock Biomass



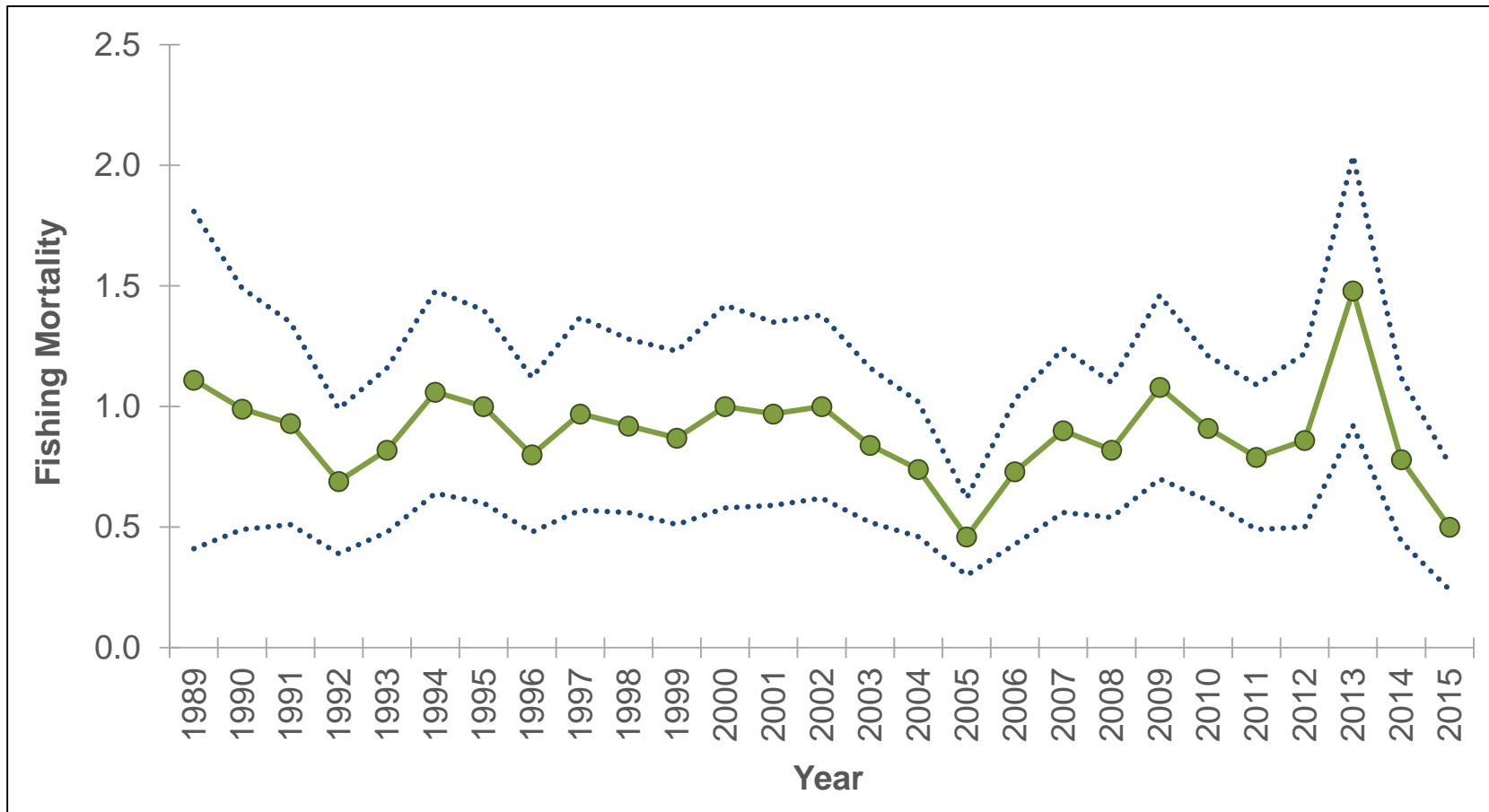
Numbers at Age



Catch at Age



Fishing Mortality



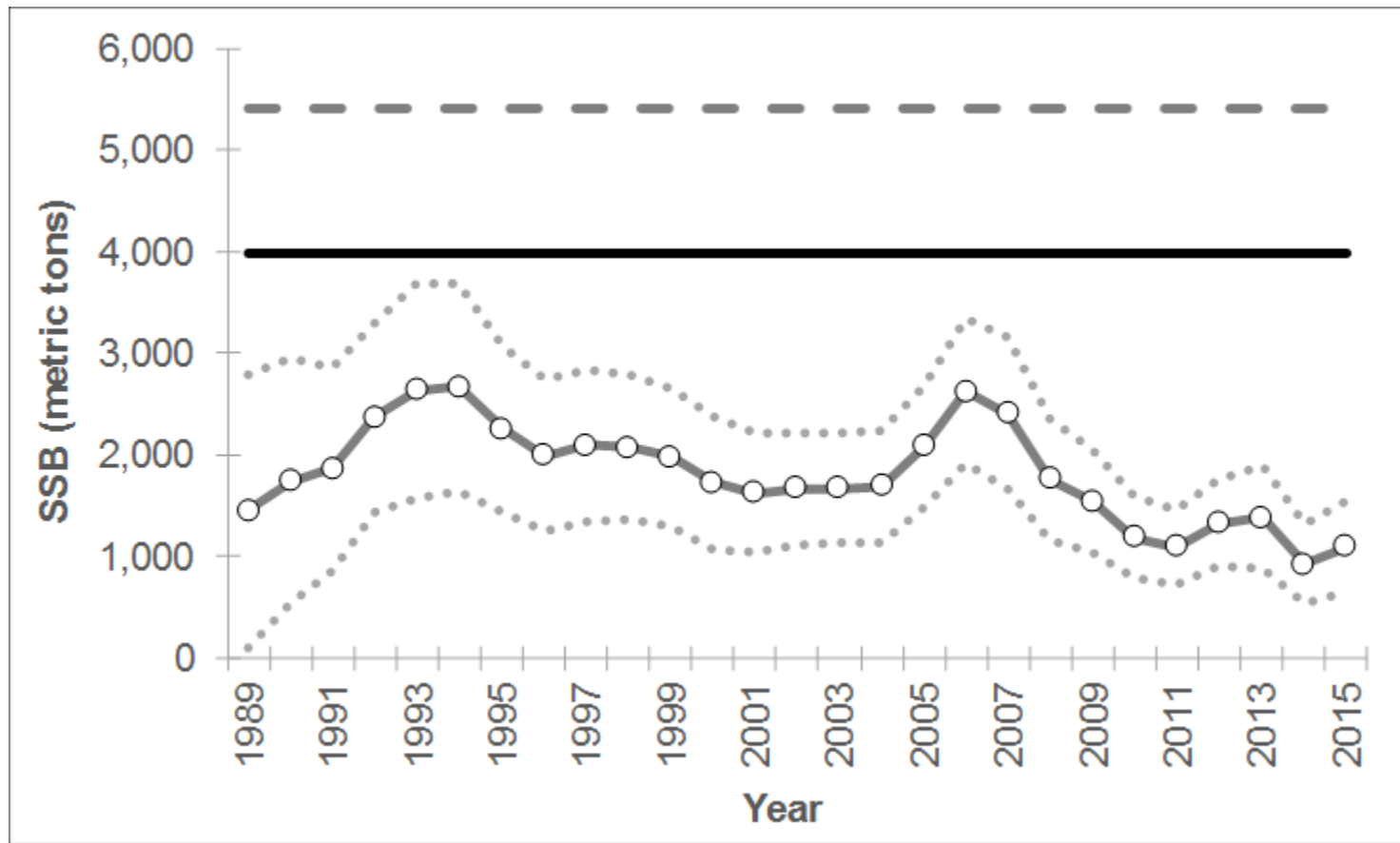
Reference Points

- Female Spawning Stock Biomass (SSB)
 - Target: $SSB_{35\%}$
 - Threshold: $SSB_{25\%}$
- Fishing Mortality (F)
 - Target: $F_{35\%}$
 - Threshold: $F_{25\%}$

Determining Stock Status

- Female Spawning Stock Biomass (SSB)
 - If current stock size $<$ threshold ($SSB_{25\%}$), then stock is **overfished**
- Fishing Mortality (F)
 - If current $F >$ threshold ($F_{25\%}$), then **overfishing** is occurring

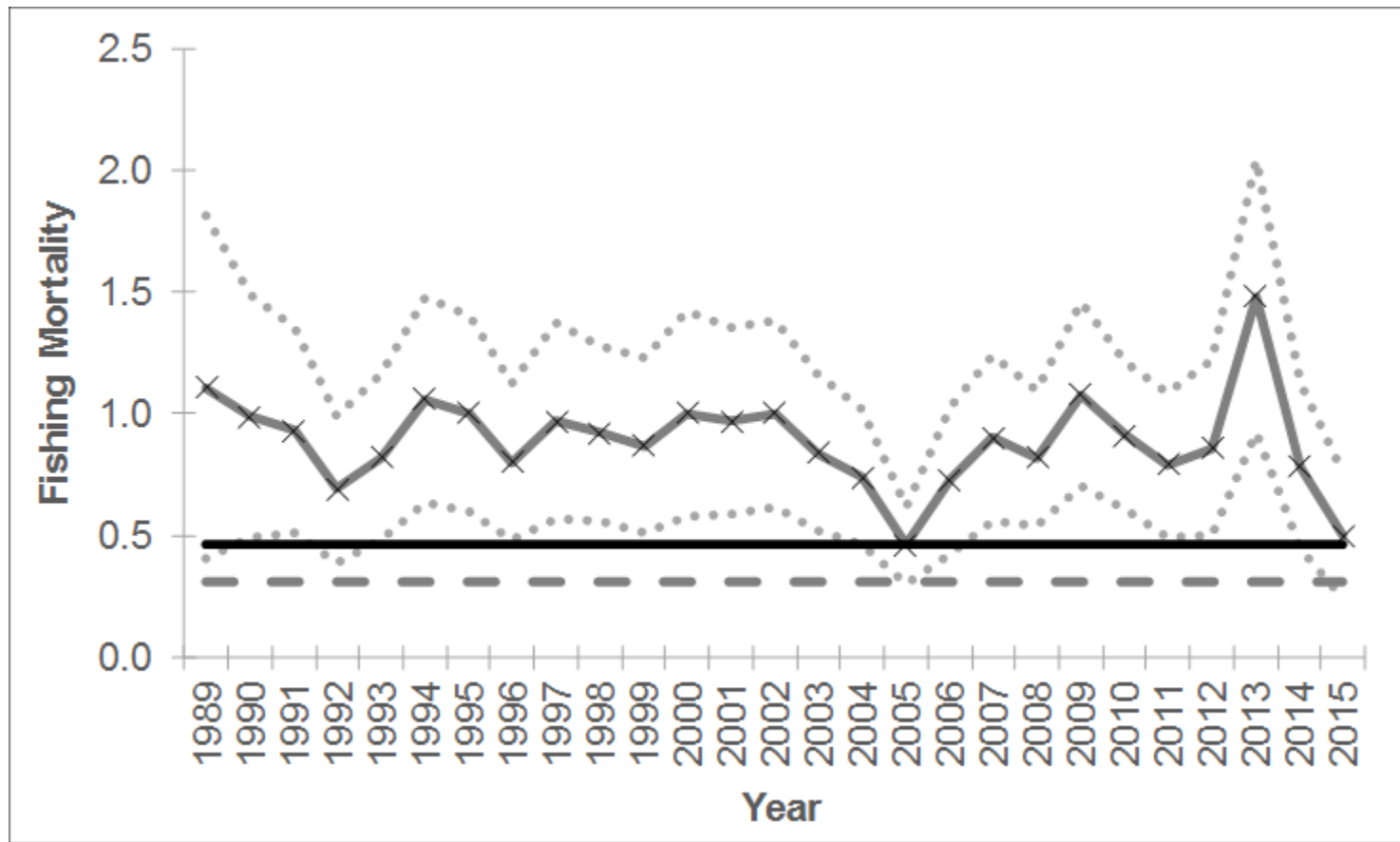
Stock Status—Female Spawning Stock Biomass



Stock Status—Female Spawning Stock Biomass

- Female Spawning Stock Biomass (SSB)
 - $SSB_{2015} = 1,097$ metric tons
 - $SSB_{25\%} = 3,985$ metric tons (threshold)
 - $SSB_{2015} < SSB_{25\%}$ stock is overfished
 - $SSB_{35\%} = 5,413$ metric tons (target)

Stock Status—Fishing Mortality



Stock Status—Fishing Mortality

- Fishing Mortality
 - $F_{2015} = 0.50$
 - $F_{25\%} = 0.46$ (threshold)
 - $F_{2015} > F_{25\%}$ overfishing is occurring
 - $F_{35\%} = 0.31$ (target)

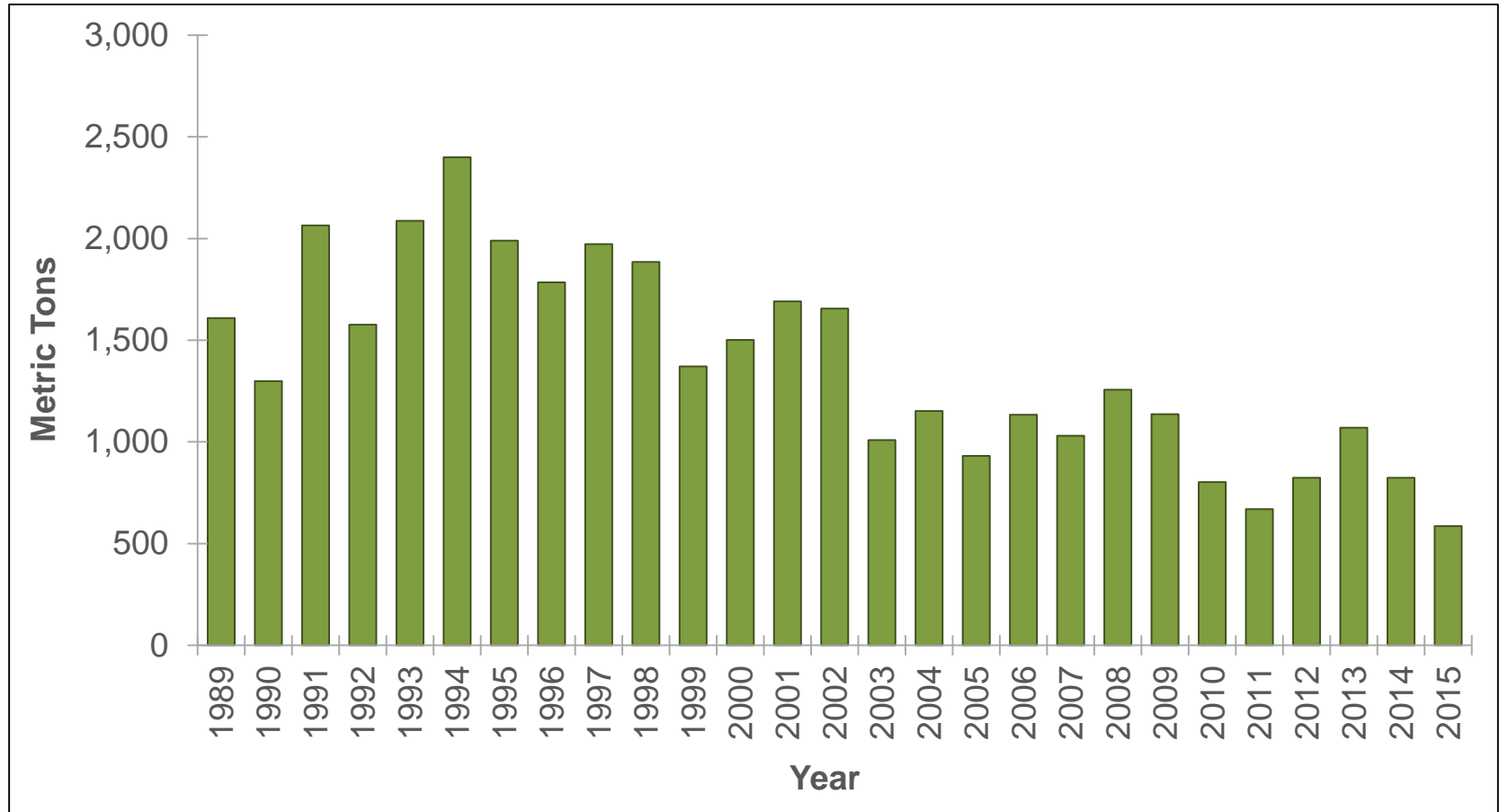
Current Stock Status in 2015

- The probability that the 2015 stock is overfished is 100 percent
- The probability that the 2015 stock is experiencing overfishing is 53 percent
- Large proportion of immature fish comprise landings
- No evidence of recent high recruitment

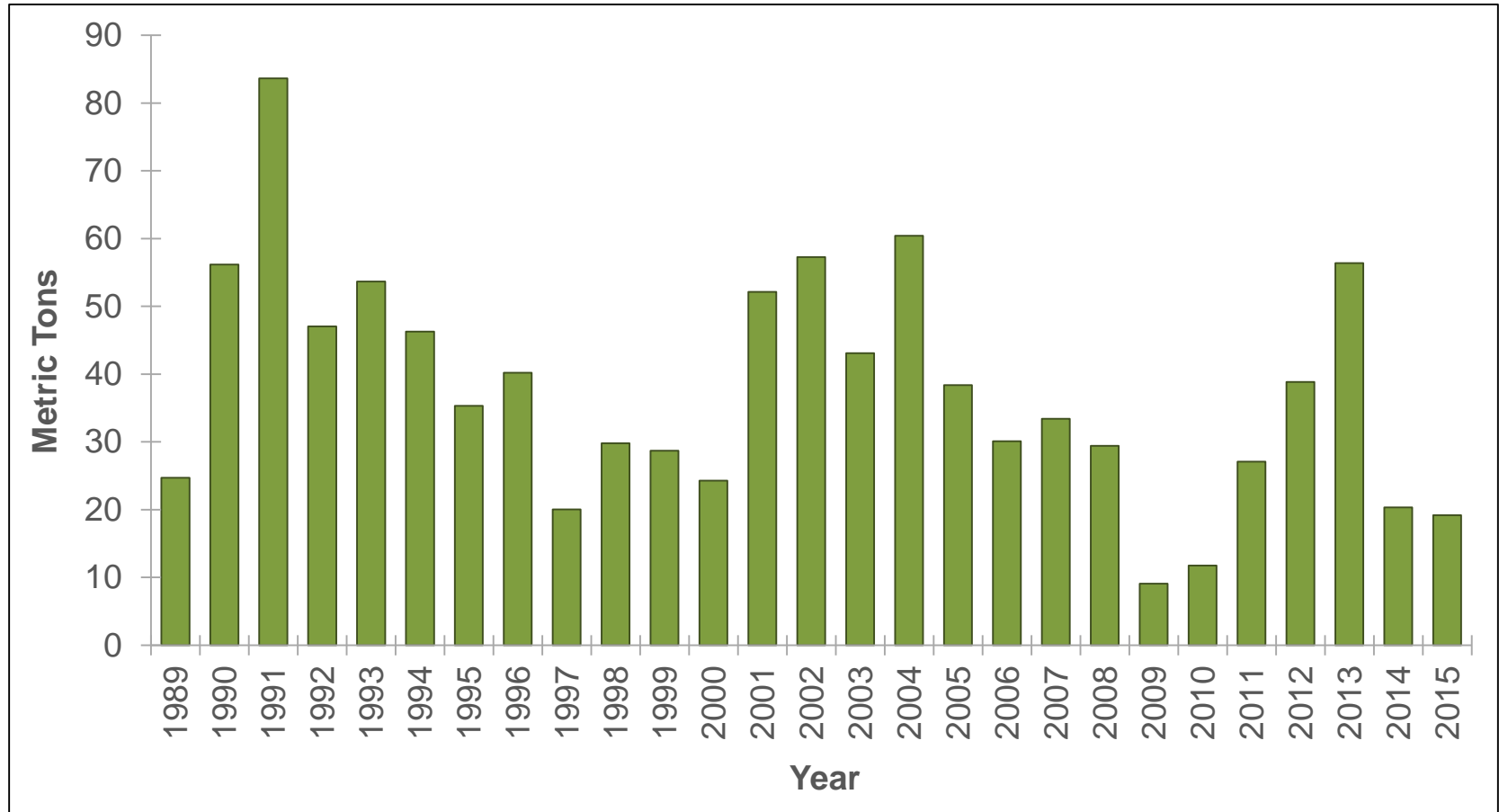
High Priority Research Recommendations

- Improve estimates of the recreational fishery live releases (catches, lengths, and ages) for southern flounder from the Marine Recreational Information Program
- Complete an age validation study using known age fish
- Expand, improve, or add fisheries-independent surveys of the ocean component of the stock
- Determine locations of spawning aggregations of southern flounder
- Investigate how environmental factors (wind, salinity, temperatures, or oscillations) may be driving the stock-recruitment dynamics for southern flounder

Commercial Catch (North Carolina to Florida East Coast)



Commercial Shrimp Trawl Bycatch (North Carolina to Florida East Coast)



Recreational Catch (North Carolina to Florida East Coast)

