



May 19, 2016

*Department of Environmental Quality*

Total Allowable Landings for Pound Nets by Waterbodies for  
Supplement A to the Southern Flounder Fishery Management Plan  
Amendment 1



Marine Fisheries



# Background

- November 2015 Motion:

“Flounder pound nets will be subject to a 5 3/4–inch escape panel and will operate under a total allowable landings of 38 percent reductions based on 2011-2015 pound net landings. The total allowable landings will be based on the waterbody where the pound nets are set, as presented by the Division of Marine Fisheries by February 2016 meeting (assumes total allowable landings equals the total allowable catch).”

- February 2016 Meeting:

Division director provided a verbal update to the commission stating the quota would be divided into six quota monitoring groups based on locations of individual flounder pound net sets.



# Requirements

- Flounder pound net fishery total allowable landings will be divided into six quota monitoring groups. Allocations of the total allowable landings will be made based on pound net permitted set locations of individual nets.
- Flounder pound net fishery will begin for each quota monitoring group Jan. 1 and will continue until the total allowable landings are met for each quota monitoring group.
- Once the flounder pound net fishery in a quota monitoring group closes, flounder pound nets must be made inoperable.
  - Gear can be reclassified to another type (e.g. bait, shrimp, blue crab, or other finfish) per pound net rule criteria.
  - Harvest of flounder from a quota monitoring group using pound nets will be unlawful once that quota monitoring group closes.



# Requirements

- Dealers will be required to obtain a Flounder Pound Net Dealer Permit outlining specifics on quota monitoring and reporting requirements.
  - Permit is being developed.
  - Permit will require dealers to report pounds of flounder harvested by pound nets daily by Standard Commercial Fishing License Number beginning Sept. 1.
  - Dealers must report daily even if the landings are zero.
- A quota monitoring group will close when dealer reported harvest reaches 80 percent of its allocation of the total allowable landings.
  - A proclamation will be issued closing the fishery within 48 hours
  - Staff will analyze landings data to account for late reporting and errors
  - If allocation is not met, another proclamation may be issued opening the group with a daily trip limit



# Requirements

- If a quota monitoring group exceeds its allocation of the total allowable landings, that group's allocation will be reduced by the overage amount the following year.
- For the benefit of the resource, if a quota monitoring group does not meet its allocation of the total allowable landings, the remaining portion will not be credited the following year or reallocated to another quota monitoring group.
- It will be unlawful to commercially harvest flounder, by use of gigs, once all of the quota monitoring groups have reached their portion of the total allowable landings and the flounder pound net fishery closes for the last quota monitoring group, per Supplement A to Amendment 1 to the Southern Flounder Fishery Management Plan.

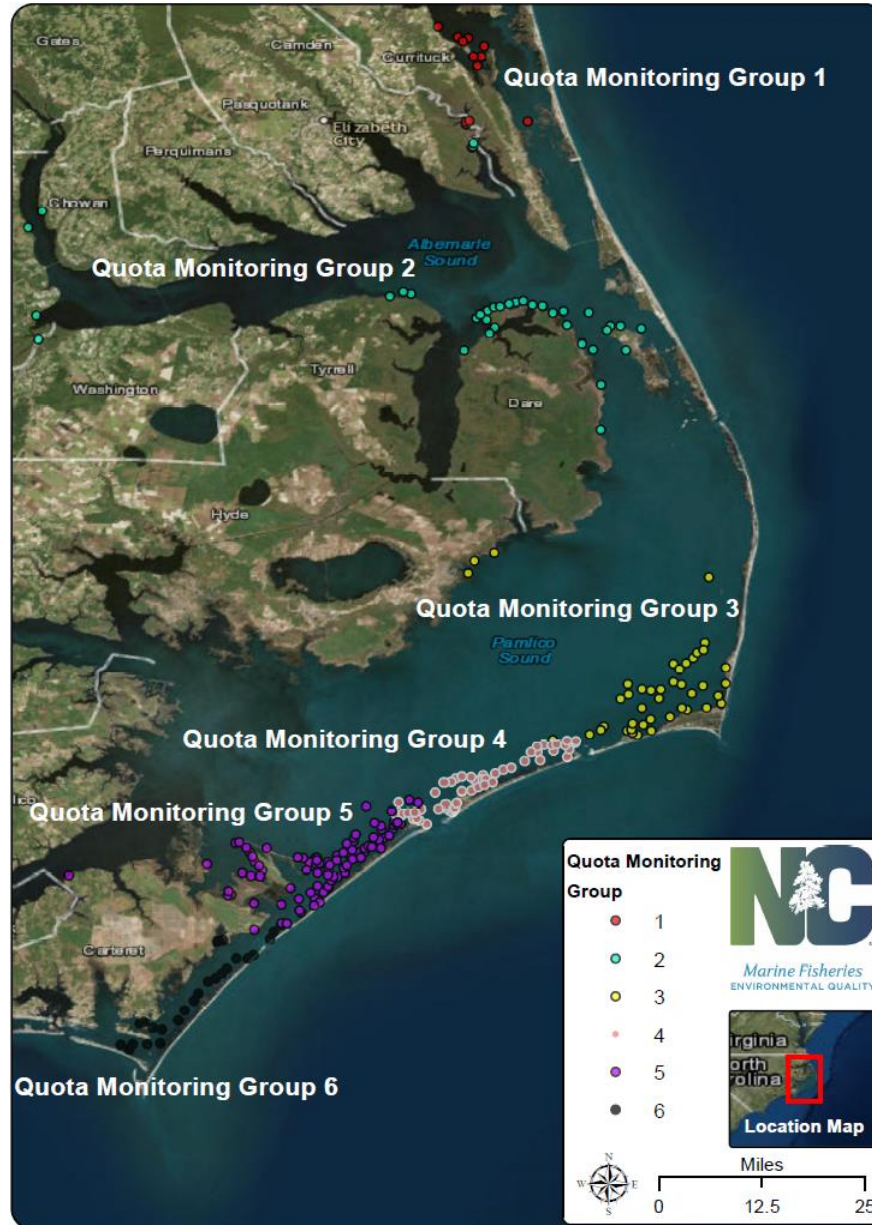


# Total Allowable Landings (pounds) by Quota Monitoring Group

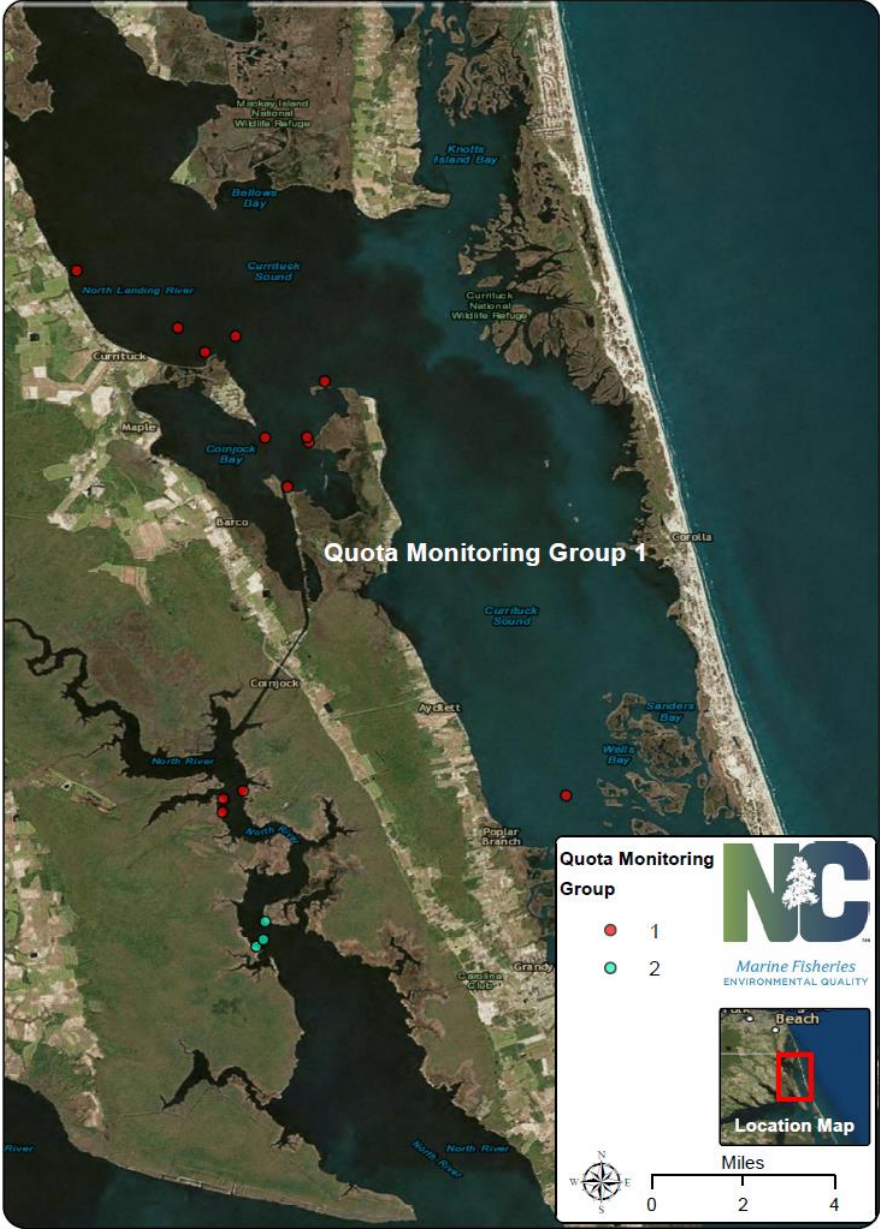
Quota Monitoring Group	Year					Five Year Total	Five Year Average	Group Allocation of TAL	Percent of TAL
	2011	2012	2013	2014	2015				
1 - Currituck	0	13,694	35,136	24,475	31,052	104,357	20,871	12,940	3%
2 - Albemarle	14,894	131,425	151,797	178,042	105,573	581,730	116,346	72,135	17%
3 - Hatteras	73,755	121,864	119,494	175,729	95,263	586,105	117,221	72,677	17%
4 - Ocracoke	68,916	94,673	135,449	116,580	95,032	510,650	102,130	63,321	15%
5 - North Core	268,817	177,594	392,793	300,901	296,892	1,436,997	287,399	178,188	42%
6 - South Core	37,311	26,996	61,559	50,204	43,718	219,786	43,957	27,254	6%
<b>Grand Total</b>	463,693	566,246	896,227	845,930	667,529	3,439,625	687,925	426,513	100%



# Flounder Pound Net Quota Monitoring Groups

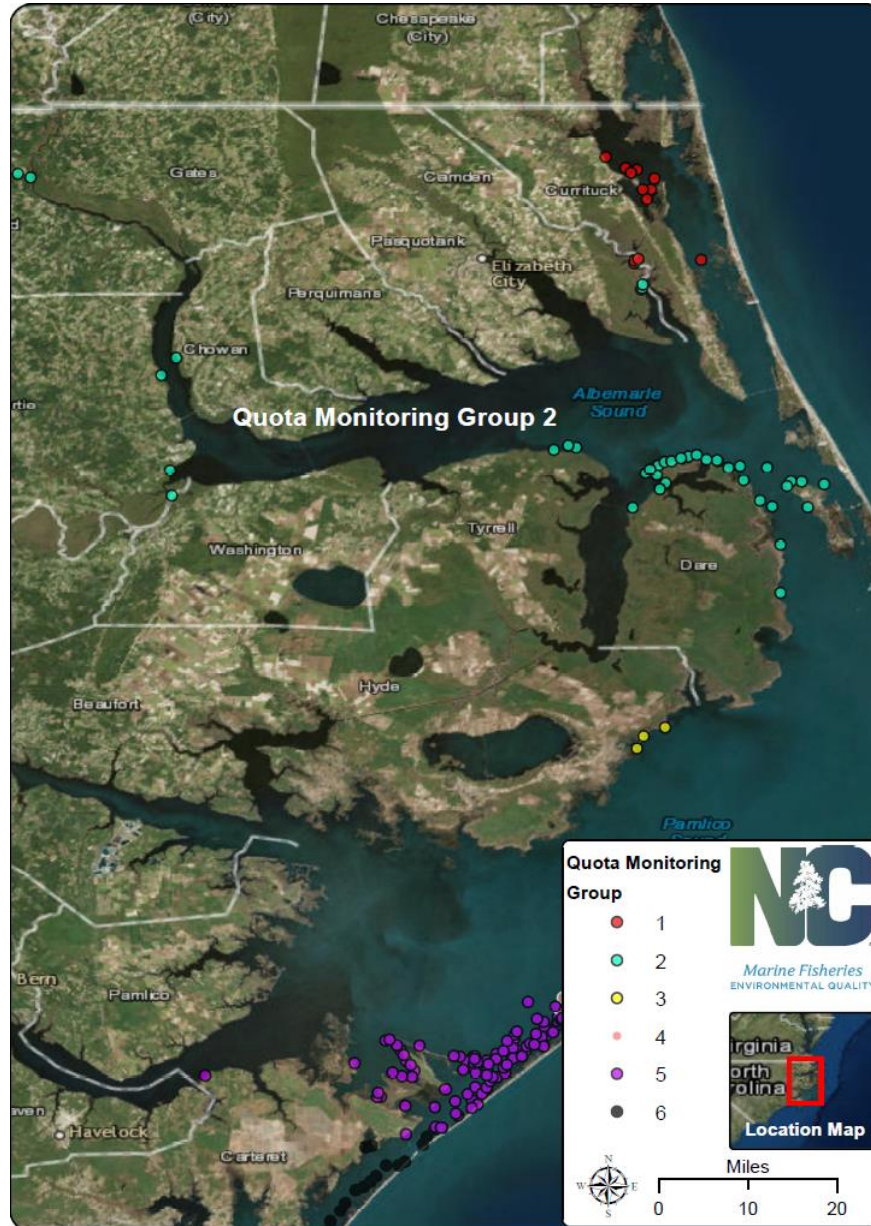


# Quota Monitoring Group 1 – 12,940 pounds

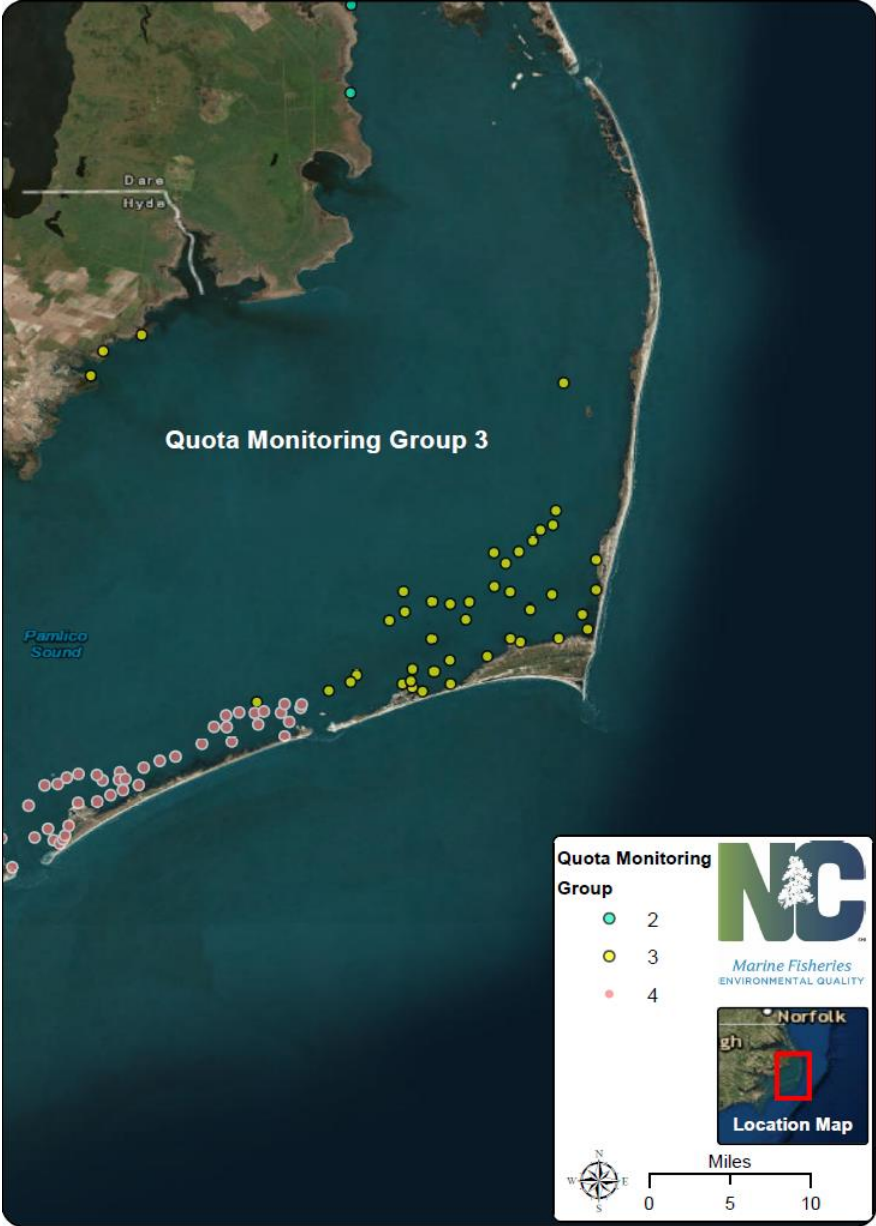




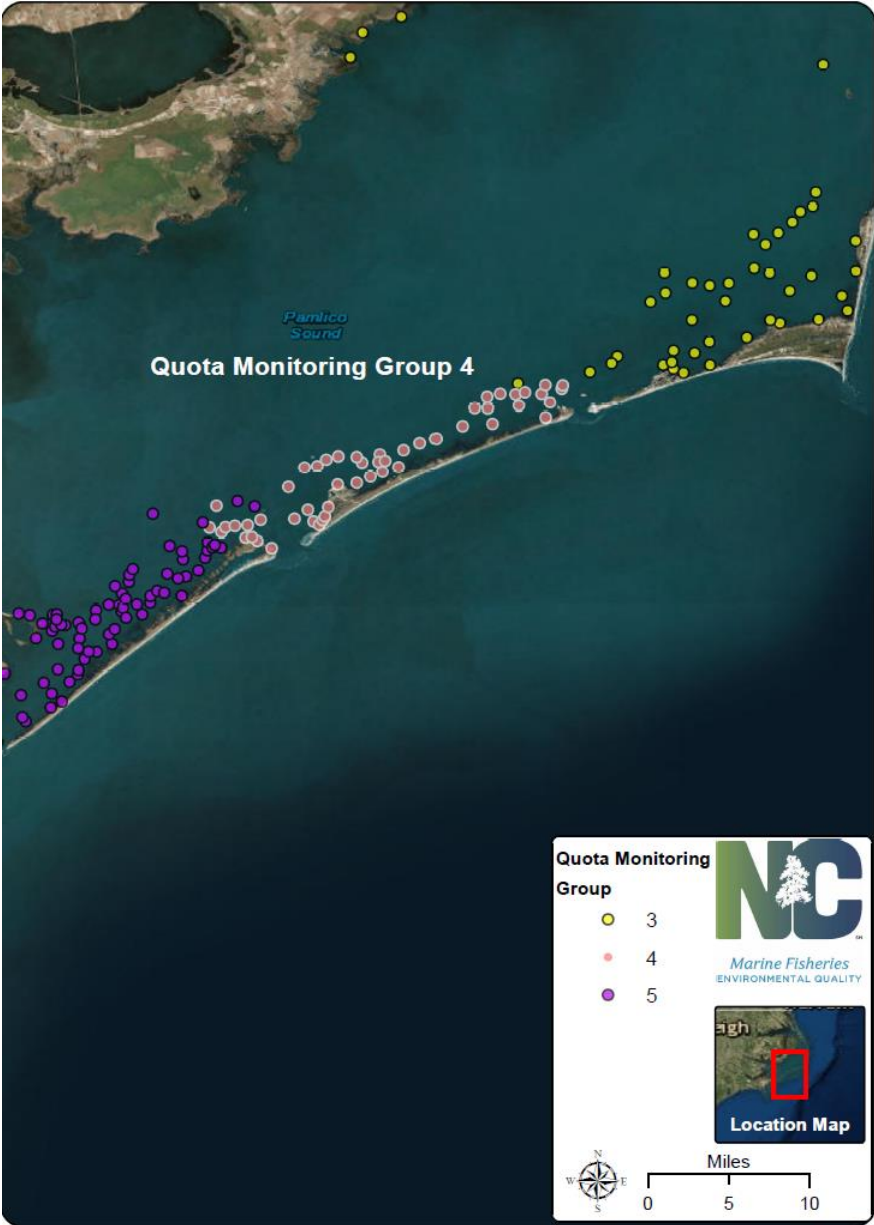
# Quota Monitoring Group 2 - 72,135 pounds



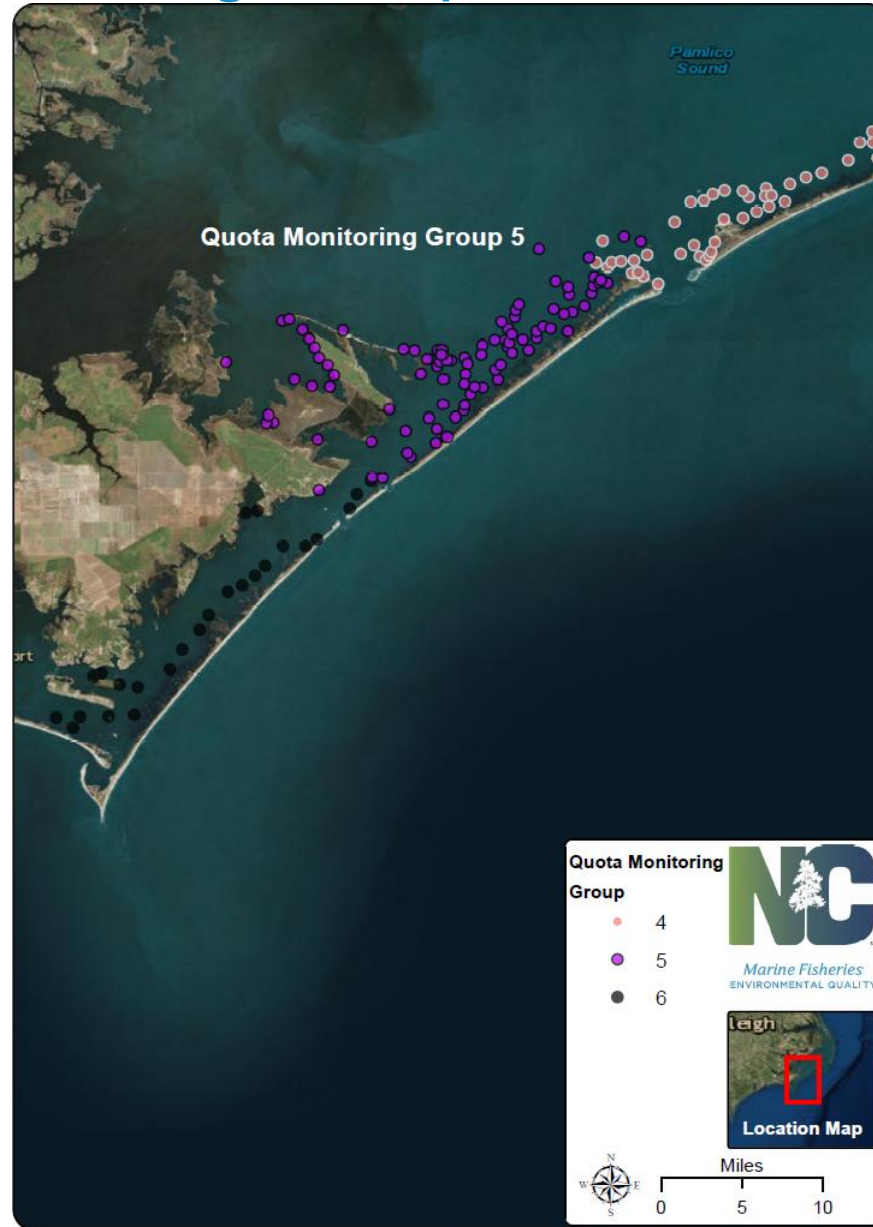
# Quota Monitoring Group 3 – 72,677 pounds



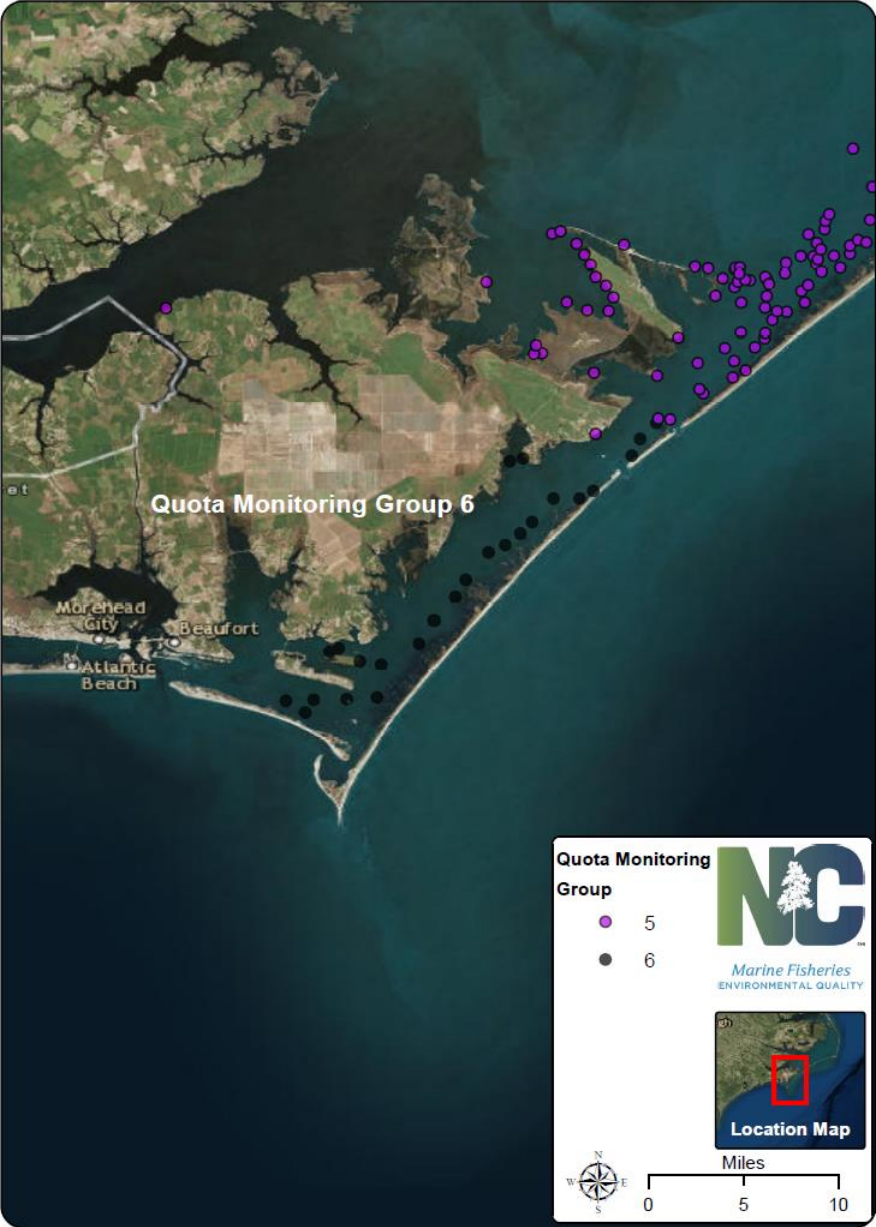
# Quota Monitoring Group 4 – 63,321 pounds



# Quota Monitoring Group 5 – 178,188 pounds



# Quota Monitoring Group 6 – 27,254 pounds



Questions?

