



Summary of Spotted Seatrout FMP Advisory Committee Workshop Discussion



Department of Environmental Quality

Marine Fisheries

NC Marine Fisheries Commission | M. Lambert and L. Pensinger | May 23, 2024



Spotted Seatrout FMP Advisory Committee

Joe Albea

Doug Cross

Risk Sasser

Steven Brewster

Herman Dunbar

Jeremy Skinner

Johnna Brooks

Matthew Littleton

Donald Willis

Dr. Jie Cao

Kevin Poole

Stuart Creighton

James Reilly II



Spotted Seatrout AC Workshop Summary

Outline

- Stock Status Review
- Base Plan Input
- Cold Stun Issue Paper Input
- Small Mesh Gill Net Information Paper Input
- Sustainable Harvest Issue Paper Input
- Supplemental Management Issue Paper Input
- Next Steps



Spotted Seatrout AC Workshop Summary

Stock Status

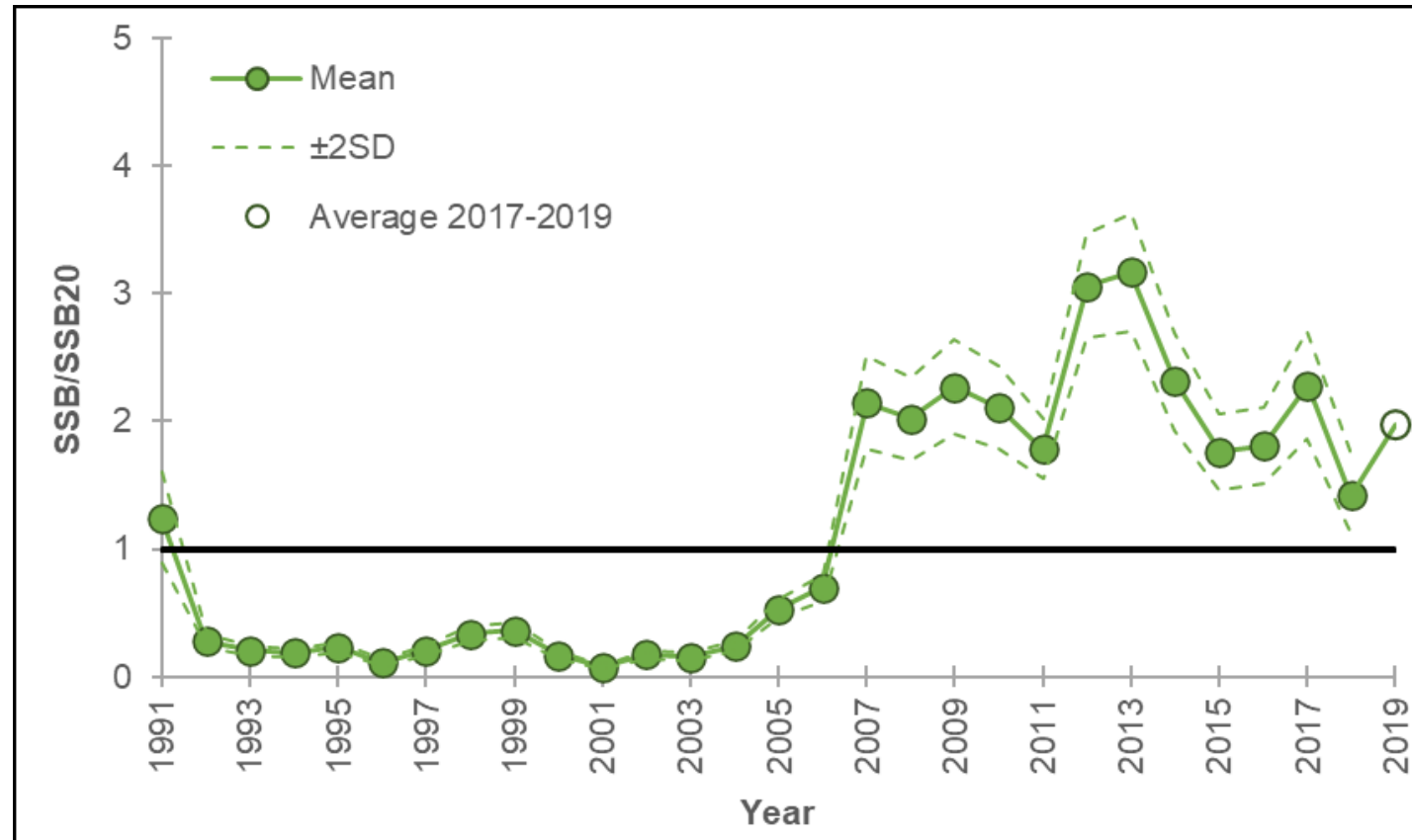


Spotted Seatrout AC Workshop Summary

Stock Status



- $SSB_{\text{Terminal}} > SSB_{20\%} \rightarrow$ Not overfished

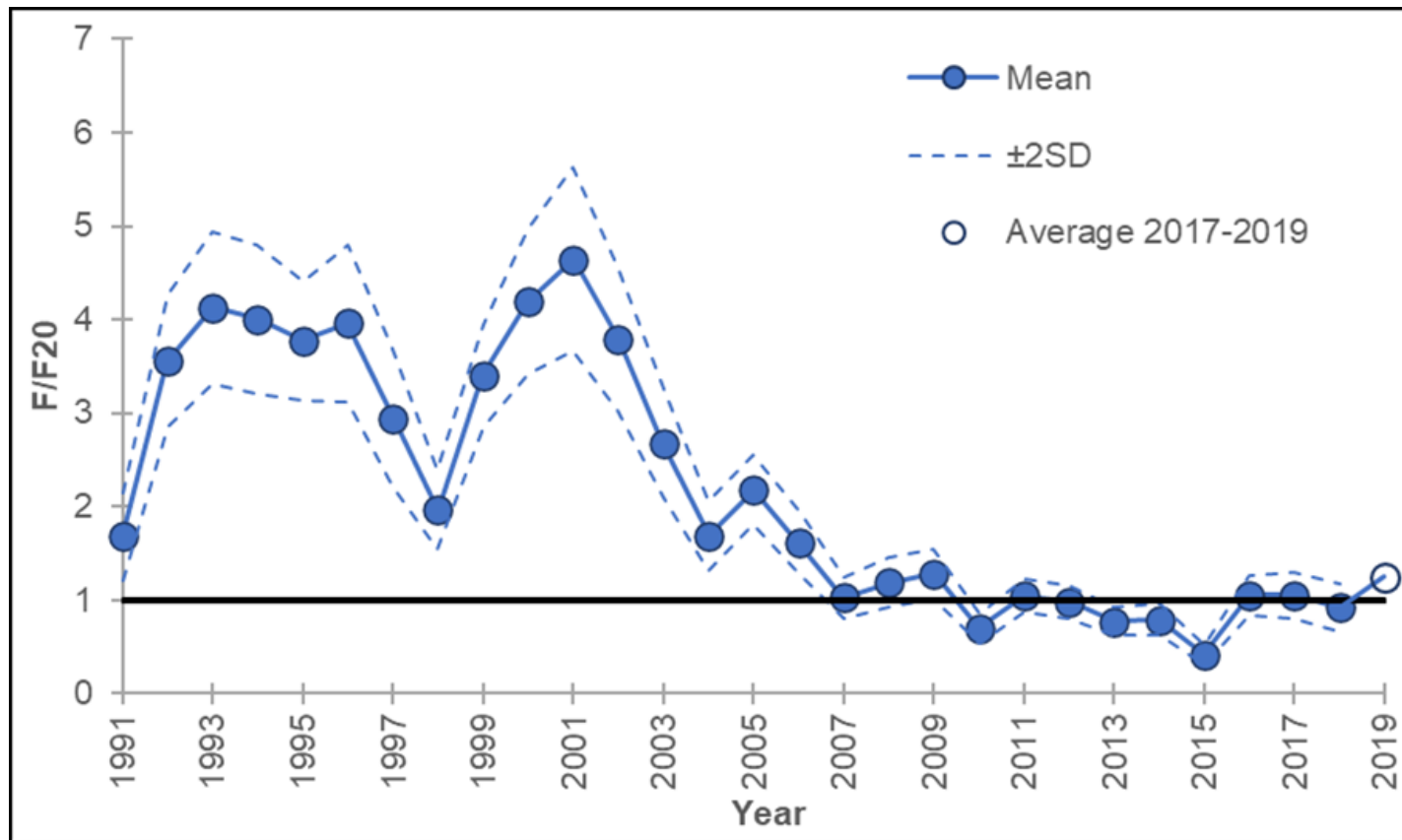


Spotted Seatrout AC Workshop Summary

Stock Status



- $F_{\text{Terminal}} > F_{20\%} \rightarrow$ Overfishing is occurring



Spotted Seatrout AC Workshop Summary

Base Plan Input



Spotted Seatrout AC Workshop Summary

Base Plan Input



- Stock Assessment
 - No specific input
- Biology and Life History
 - No specific input
- Fishery Characterization
 - No specific input



Spotted Seatrout AC Workshop Summary

Cold Stun Issue Paper



Spotted Seatrout AC Workshop Summary

Cold Stun Issue Paper



- Current closure period preferences
 - Extending closure
 - Keeping current closure



Spotted Seatrout AC Workshop Summary

Cold Stun Issue Paper

- Adaptive management preferences
 - General agreement tools should be available
 - Extend closure
 - Temporary bag/trip limit reduction
 - Temporary minimum size/slot limit
 - Limit use depending on cold stun severity
 - Defined end date
 - Soft opening (e.g., temporary reduced bag limit) if closure extends to fall
 - Temporary bag limits before season closure
 - Same management between sectors



Spotted Seatrout AC Workshop Summary

Cold Stun Issue Paper



- Other ideas

- Consider incorporating technology (e.g., drones or remote sensing) to monitor and evaluate
- NCSU is working on method to evaluate severity



Spotted Seatrout AC Workshop Summary

Small Mesh Gill Net Information Paper



Spotted Seatrout AC Workshop Summary

Small Mesh Gill Net Information Paper

- Research recommendation: characterize runaround gill net discards
- Asked to investigate data further to see if there is a mesh size that would work with commercial slot



Spotted Seatrout AC Workshop Summary

Outline



- Stock Status Review
- Base Plan Input
- Cold Stun Issue Paper Input
- Small Mesh Gill Net Information Paper Input
- Sustainable Harvest Issue Paper Input
- Supplemental Management Issue Paper Input



Spotted Seatrout AC Workshop Summary

Sustainable Harvest Issue Paper



Spotted Seatrout AC Workshop Summary

Sustainable Harvest Issue Paper

- General Input
 - Committee preferences
 - Prioritize access when considering needed reductions
 - Size limit increase over season closure
 - Consider different measures for recreational and commercial fisheries
 - Non-quantifiable items



Spotted Seatrout AC Workshop Summary

Sustainable Harvest Issue Paper

- Size limits
 - Prefer raising minimum size
 - Asked to explore specific slot ideas
- Bag/trip limits
 - Prefer other options to recreational bag limit changes
 - Some discussion about commercial catch cap



Spotted Seatrout AC Workshop Summary

Sustainable Harvest Issue Paper

- Season closure
 - Prefer short as possible
 - Commercial closure
 - Specific winter examples
 - Specific spawning examples
 - For-hire input indicated preference for winter closure to other seasons
 - Desire to consider number of trips impacted



Spotted Seatrout AC Workshop Summary

Sustainable Harvest Issue Paper

- Combination management
 - Recreational
 - Increase size + season closure
 - Increase size + seasonal bag decrease + other options as necessary
 - Increase size + bag decrease
 - Support for rec: 16"–20" slot w/ 1 over 24" + com: Jan– Mar or Feb– Apr closure



Spotted Seatrout AC Workshop Summary

Sustainable Harvest Issue Paper



- Adaptive management
 - Generally supported
 - Interim analysis through FMP update
 - Use adaptive management if not meeting objectives
 - Adjusting or initiating closure period
 - Seasonal bag limit reduction
 - Desire to apply across sectors
 - Streamlined approach to adaptive management
 - Synchronize implementation across FMPs



Spotted Seatrout AC Workshop Summary

Supplemental Management Issue Paper



Spotted Seatrout AC Workshop Summary

Supplemental Management Issue Paper

- Vessel Limits
 - No support
- Eliminating Captain/Crew Allowance
 - Some support
 - Spotted Seatrout vs other fisheries



Spotted Seatrout AC Workshop Summary

Supplemental Management Issue Paper



- Commercial Hook-and-Line Fishery
 - Desire for further feedback and outreach prior to implementing
 - General support
 - Mostly contingent on limiting entry into fishery
 - Implementing with gill nets as allowable gear
 - Implementing without gill nets as allowable gear
 - Commercial license reform
 - Viable option, would open access to areas not able to set nets



Spotted Seatrout AC Workshop Summary

Supplemental Management Issue Paper

- Gear Requirements
 - Committee input
 - Increased ethical angling outreach before potential mandating
 - Short in visible locations
 - Social media: more video
 - Removal of gigs as allowable gear
- Fishing Tournaments
 - Live release tournaments increase mortality
 - MFC currently does not regulate
 - Slot would likely alter behavior



Next Steps



Next Steps

Where to find the draft of Amendment 1 to the Spotted Seatrout Fishery Management Plan:

[Base Plan](#)

[Small Mesh Gill Net Information Paper](#)

[Sustainable Harvest Issue Paper](#)

[Supplemental Management Issue Paper](#)

[Cold Stun Management Issue Paper](#)



Next Steps

- August MFC Meeting
 - Standing AC review
 - Public comment
- November MFC Meeting
 - Preferred management option



Questions

Lucas Pensinger

Email: lucas.pensinger@deq.nc.gov

Office: 252-515-5638

Melinda Lambert

Email: melinda.lambert@deq.nc.gov

Office: 252-473-5734

