



# Delineation of Fishing Water Boundaries

November 17, 2022

Chairman's Report

Marine Fisheries Commission Business Meeting



# Delineation Timeline

**April 2018:** WRC requests collaborative evaluation of fishing water boundaries

**January 2019:** MFC-WRC Joint Committee on Delineation of Fishing Waters formed

**January – May 2019:** MFC-WRC Joint Committee and staff met multiple times

**August 2019:** WRC selected salinity of 2.6 ppt as delineation measure

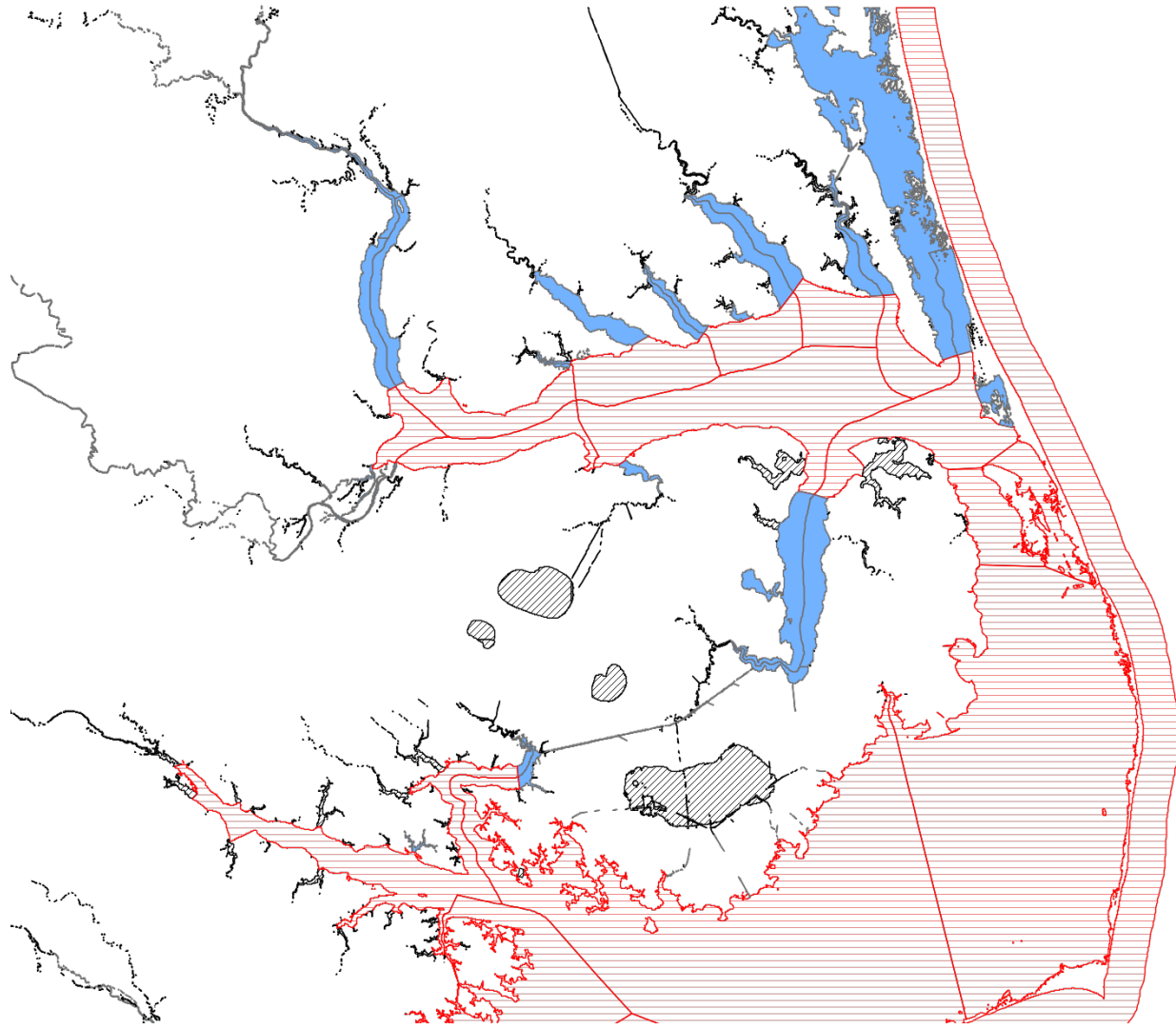
**Fall 2019:** Comments Received in Opposition to Boundary Line Changes

**2020 – 21:** MFC/WRC continued working towards joint rules readoption

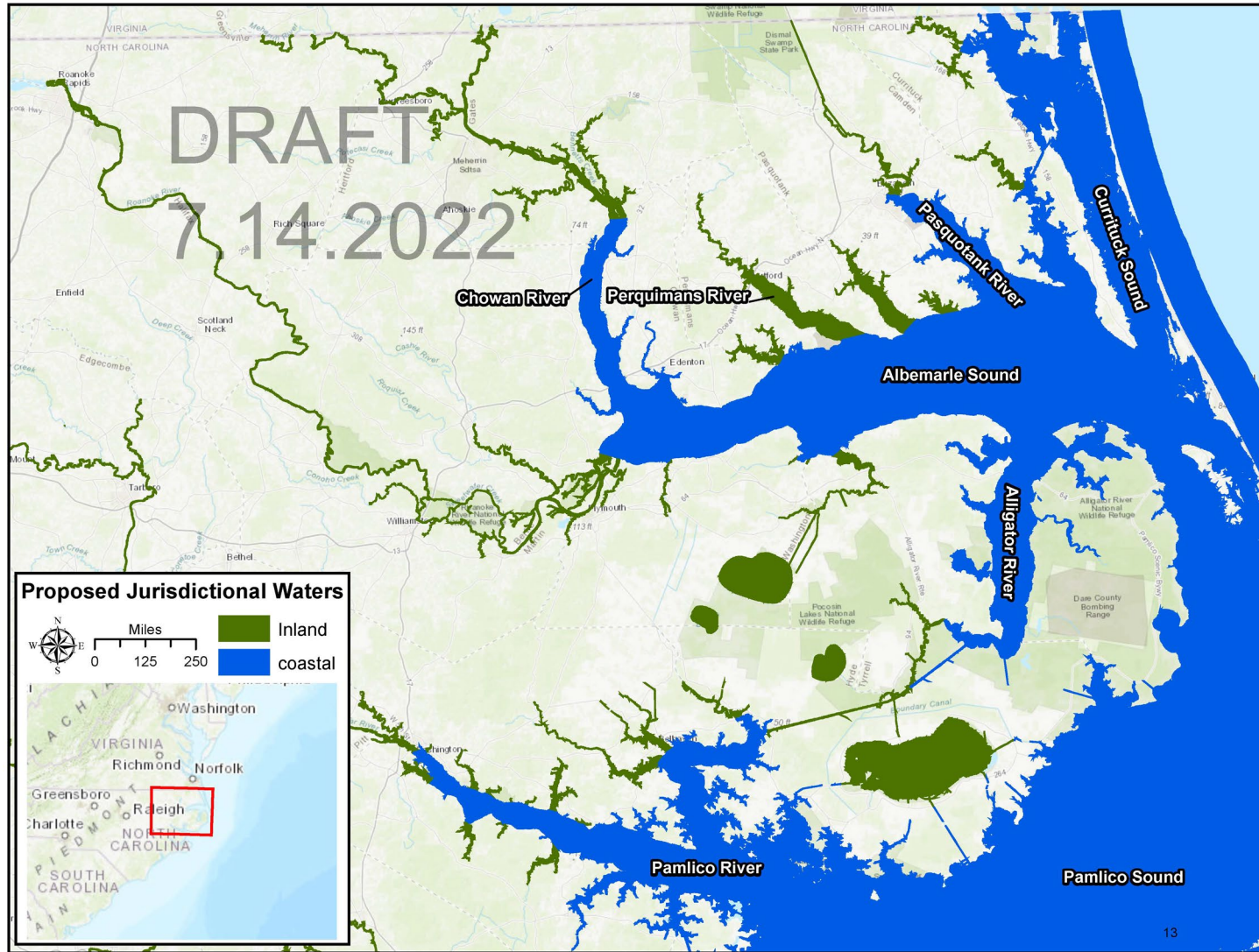
**2022:** MFC and WRC readopt joint rules as is, will continue to work on joint rule issues.

**2022:** Joint rules readopted

**June 6 2022:** MFC and WRC Chairman hold meeting to continue delineation discussion.

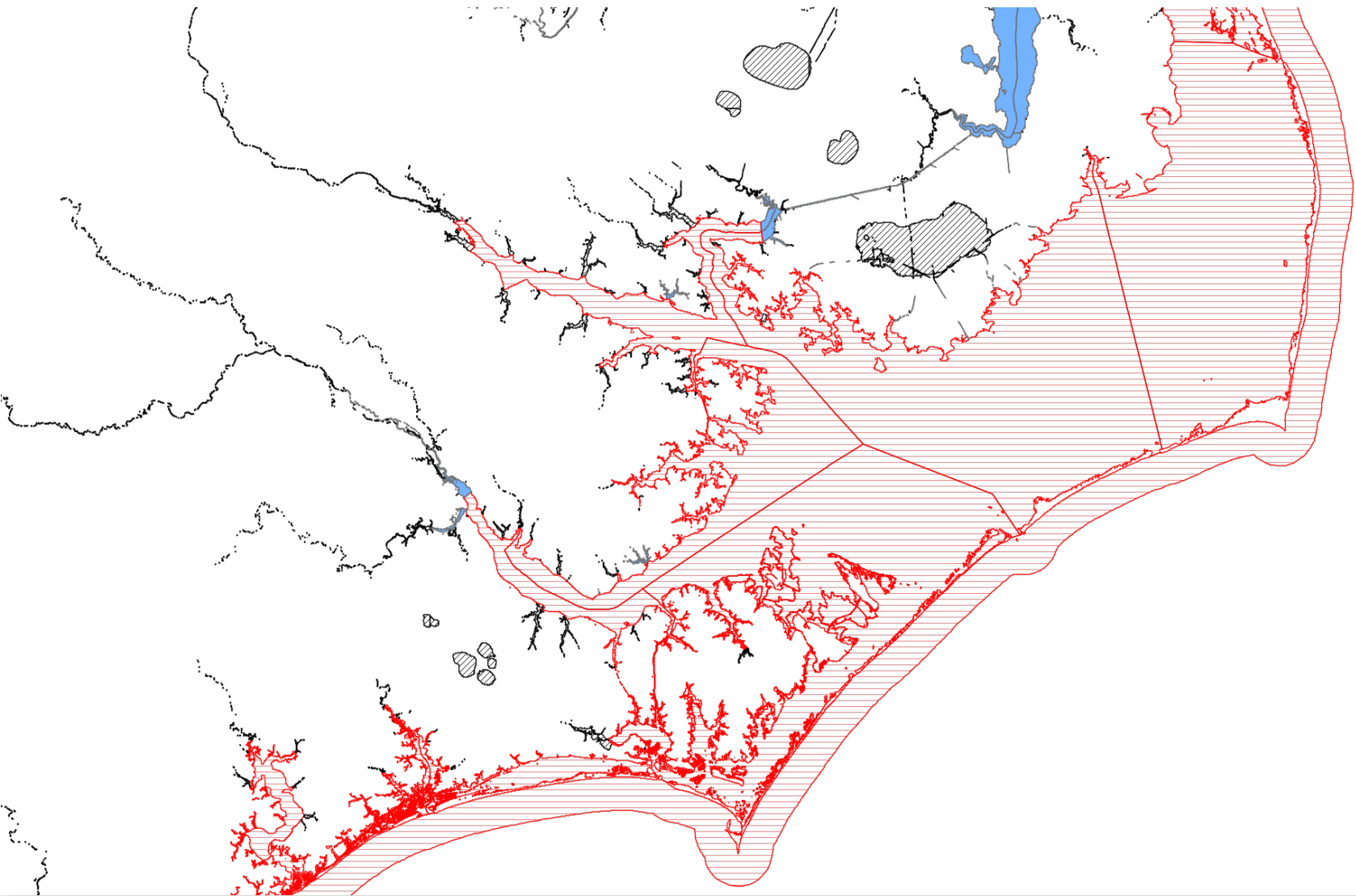


Current  
Inland/Joint/Coastal  
*Northern Map*



Proposed  
Inland/Coastal  
Boundaries

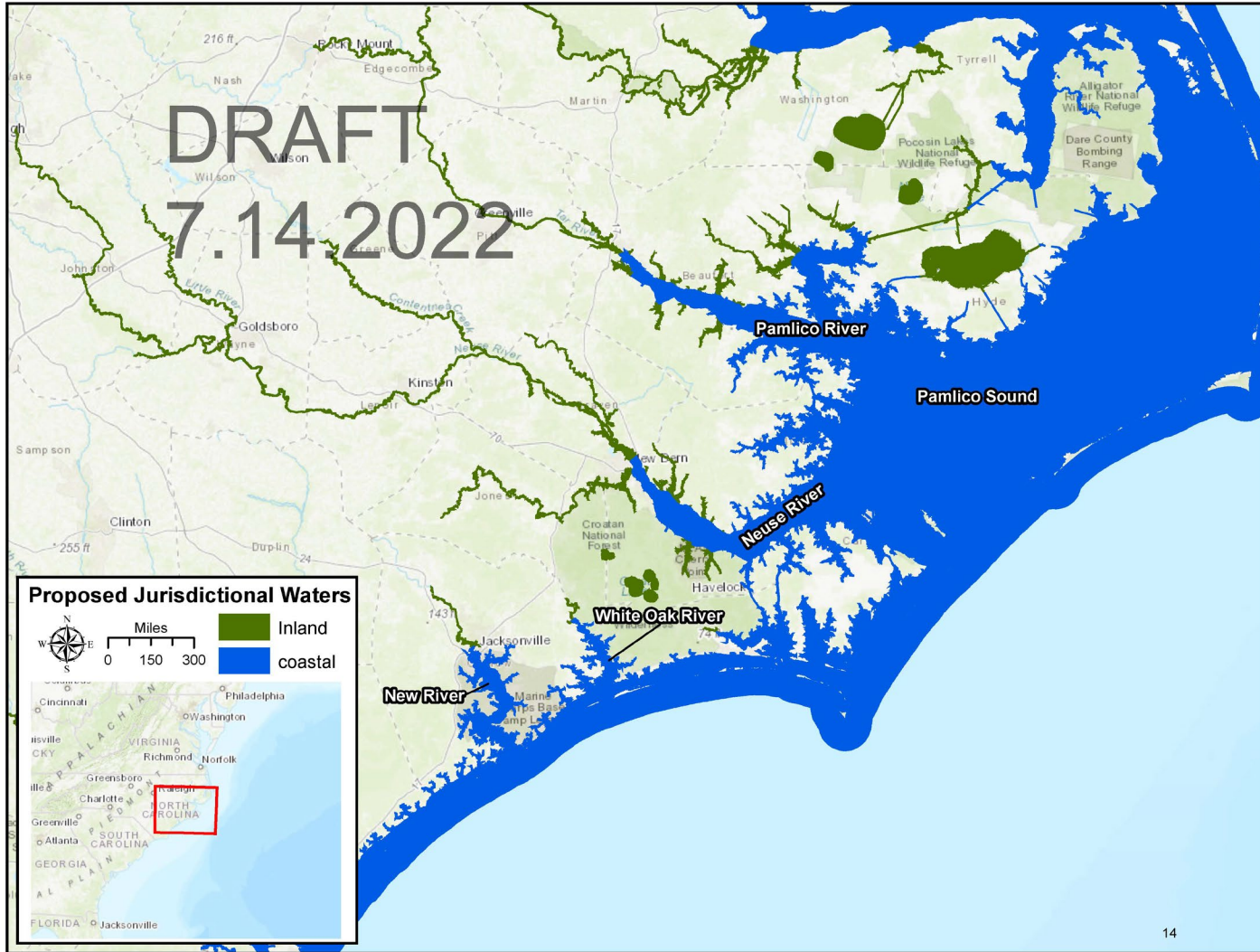
*Northern Map*



Current  
Inland/Joint/Coastal

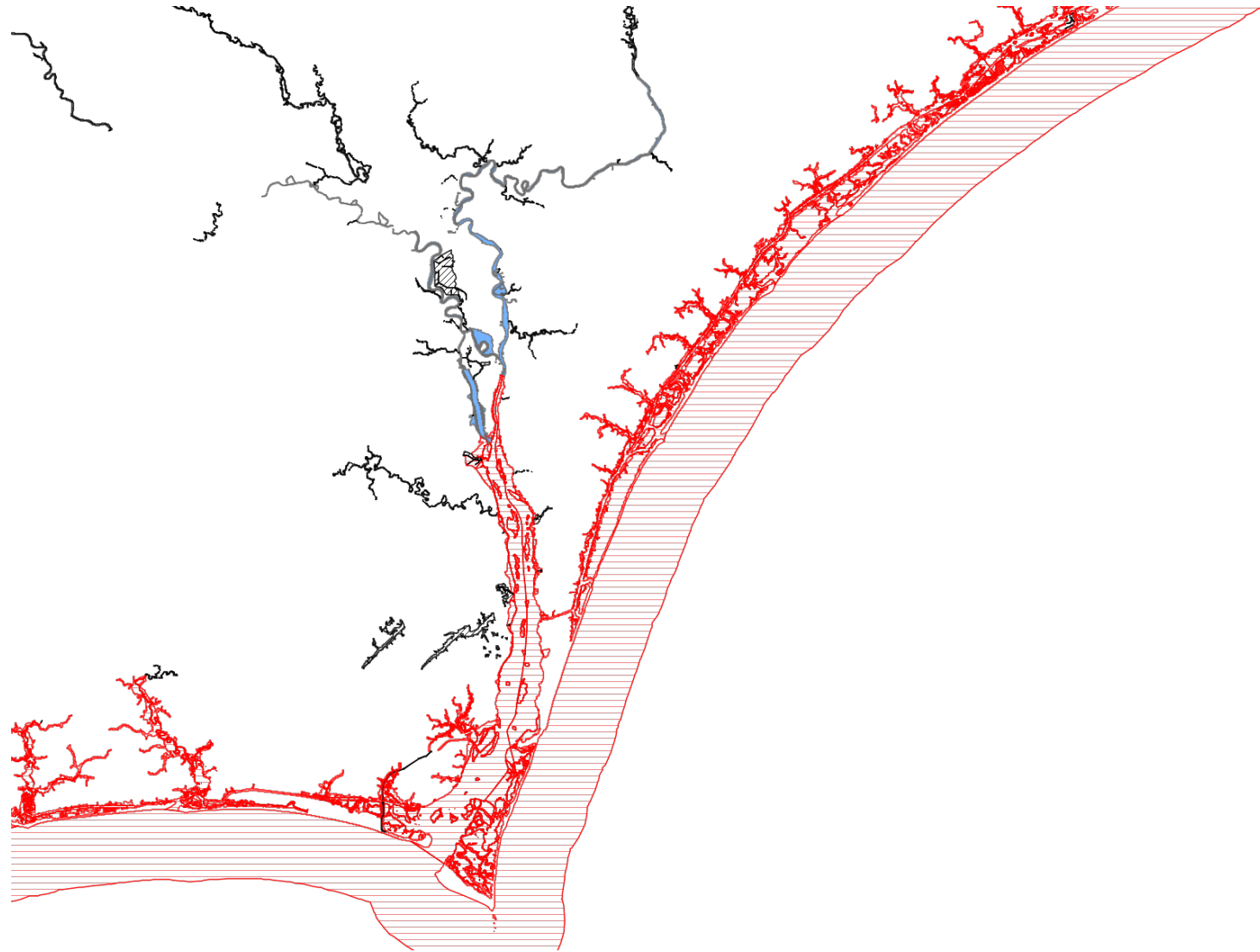
*Central Map*

DRAFT  
7.14.2022



Proposed  
Inland/Coastal  
Boundaries

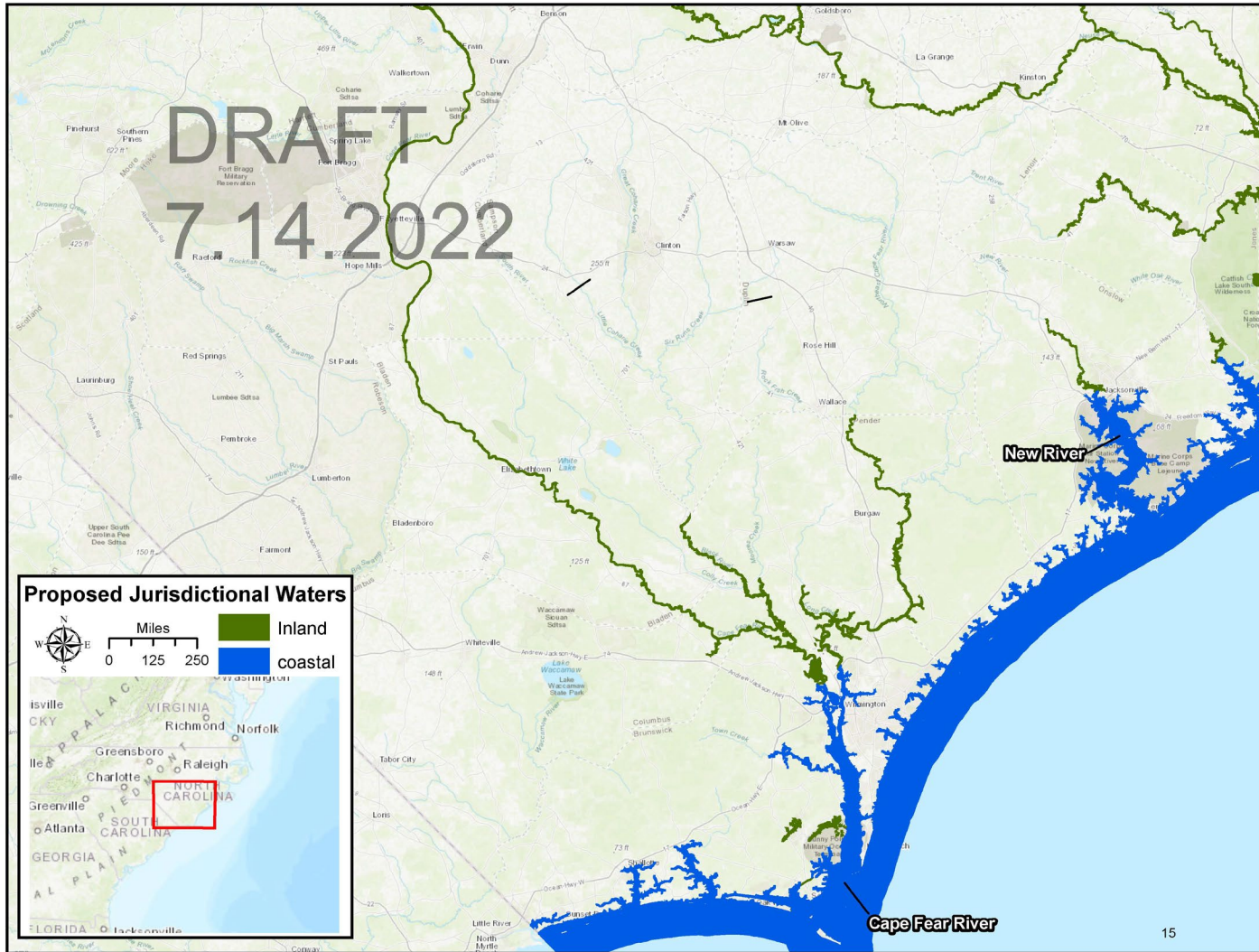
*Central Map*



Current  
Inland/Joint/Coastal

*Southern Map*

DRAFT  
7.14.2022



Proposed  
Inland/Coastal  
Boundaries

*Southern Map*