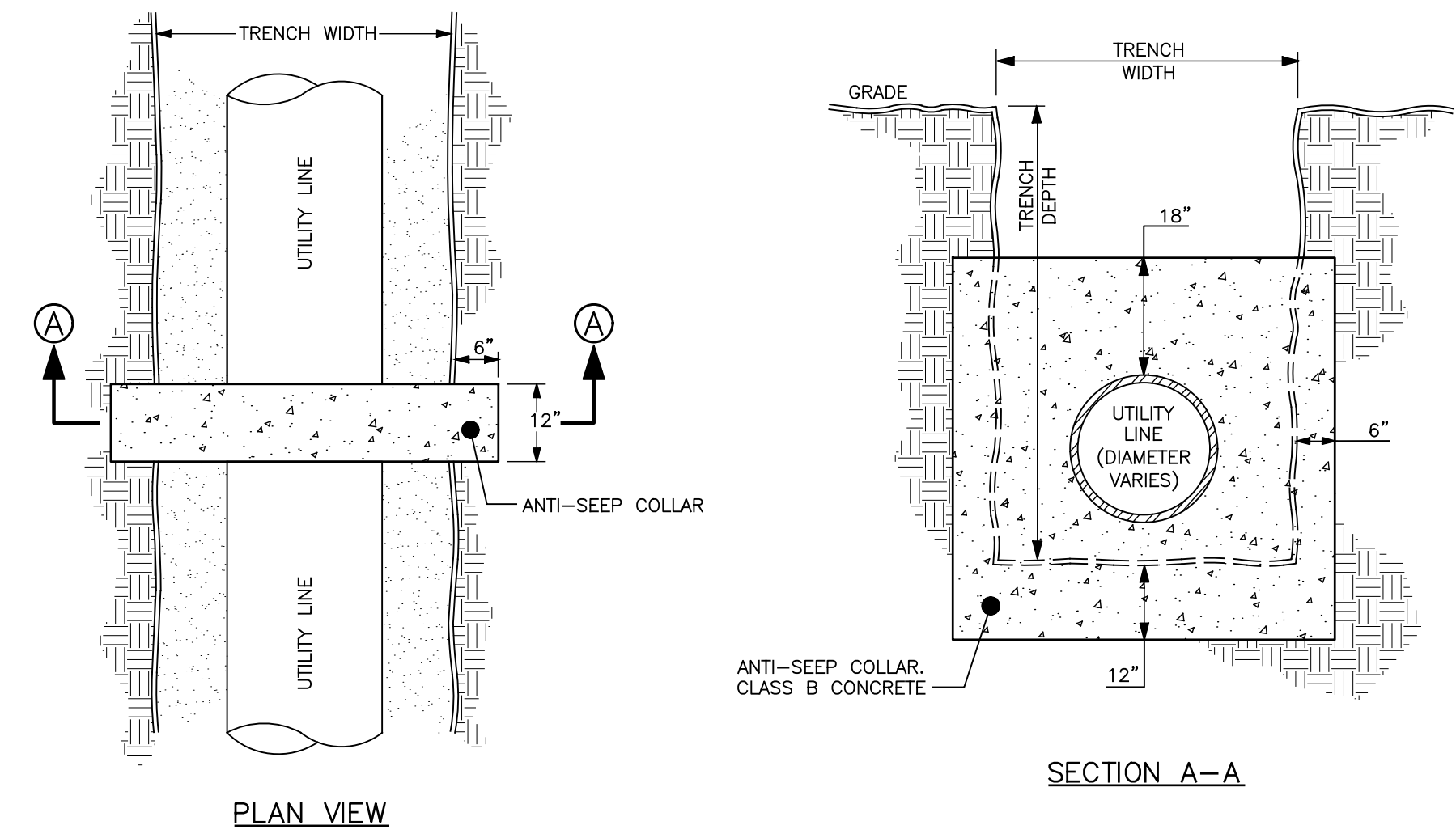


PRELIMINARY
NOT FOR CONSTRUCTION

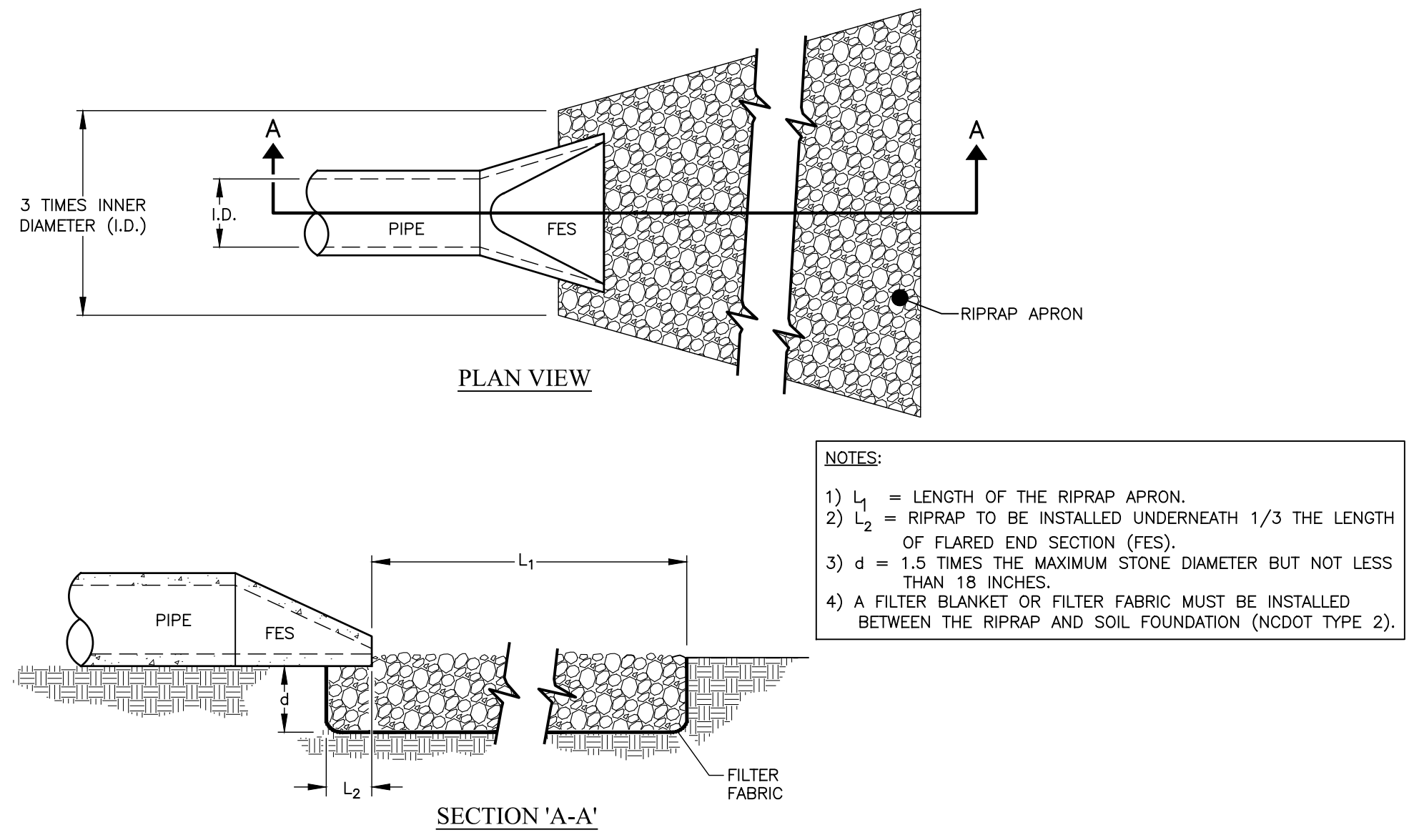
© 2019 LaBella Associates

**ALAMANCE
AGGREGATES, LLC**
Mr. Chad Threatt, VP

Alamance County Mine

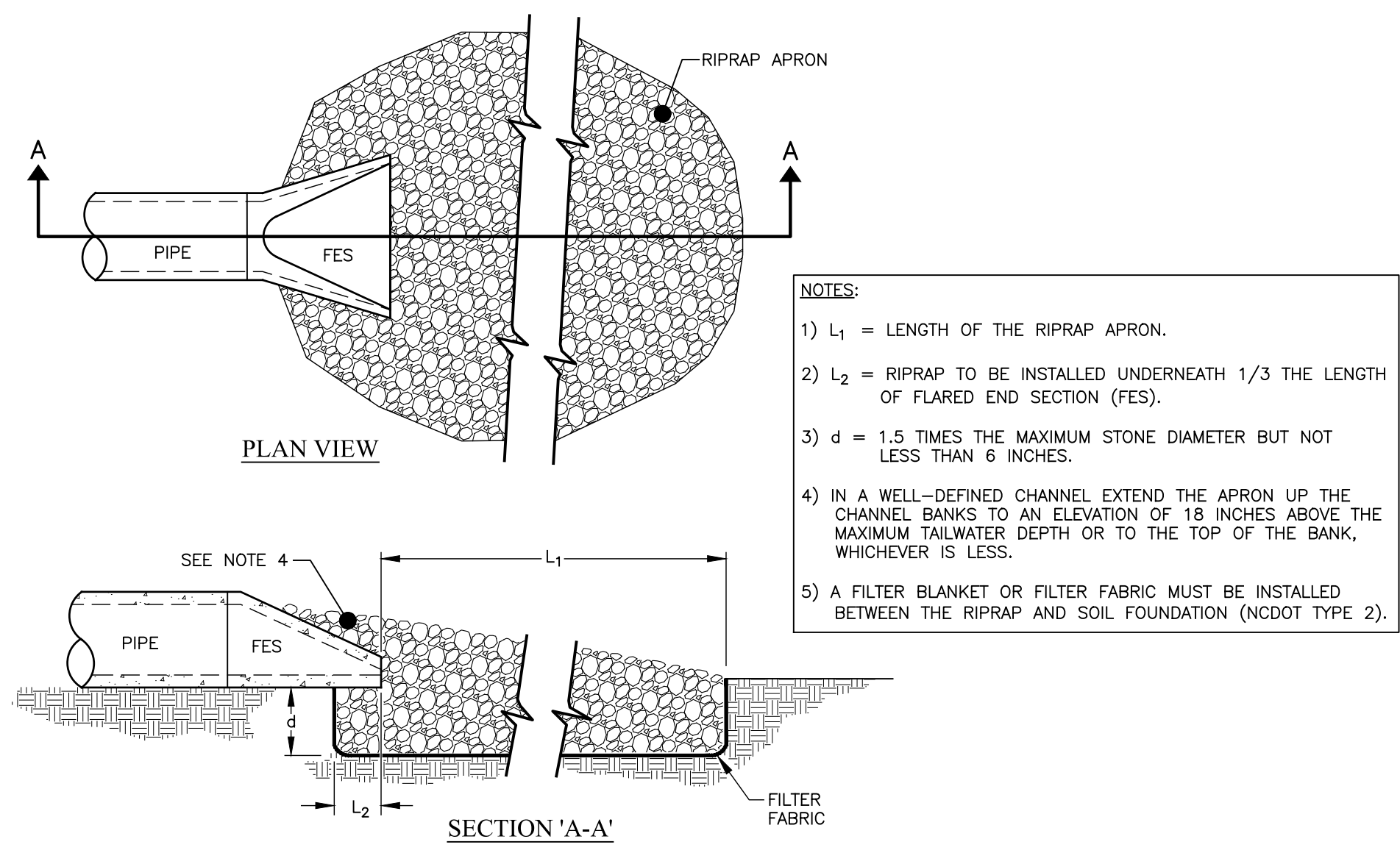


3 ANTI-SEEP COLLAR
C 402 NTS



- NOTES:
- 1) L_1 = LENGTH OF THE RIPRAP APRON.
 - 2) L_2 = RIPRAP TO BE INSTALLED UNDERNEATH 1/3 THE LENGTH OF FLARED END SECTION (FES).
 - 3) d = 1.5 TIMES THE MAXIMUM STONE DIAMETER BUT NOT LESS THAN 18 INCHES.
 - 4) A FILTER BLANKET OR FILTER FABRIC MUST BE INSTALLED BETWEEN THE RIPRAP AND SOIL FOUNDATION (NCDOT TYPE 2).

2 PIPE OUTLET TO FLAT AREA NO WELL-DEFINED CHANNEL
C 402 NTS



- NOTES:
- 1) L_1 = LENGTH OF THE RIPRAP APRON.
 - 2) L_2 = RIPRAP TO BE INSTALLED UNDERNEATH 1/3 THE LENGTH OF FLARED END SECTION (FES).
 - 3) d = 1.5 TIMES THE MAXIMUM STONE DIAMETER BUT NOT LESS THAN 6 INCHES.
 - 4) IN A WELL-DEFINED CHANNEL EXTEND THE APRON UP THE CHANNEL BANKS TO AN ELEVATION OF 18 INCHES ABOVE THE MAXIMUM TAILWATER DEPTH OR TO THE TOP OF THE BANK, WHICHEVER IS LESS.
 - 5) A FILTER BLANKET OR FILTER FABRIC MUST BE INSTALLED BETWEEN THE RIPRAP AND SOIL FOUNDATION (NCDOT TYPE 2).

1 PIPE OUTLET TO WELL-DEFINED CHANNEL
C 402 NTS

NO.	DATE	DESCRIPTION
REVISIONS		
PROJECT NUMBER:		2180544
DRAWN BY:		KCG/ATC
REVIEWED BY:		PAS
ISSUED FOR:		REVIEW
DATE:		5/8/19
DRAWING NAME:		

SITE DETAILS

DRAWING NUMBER:

C402