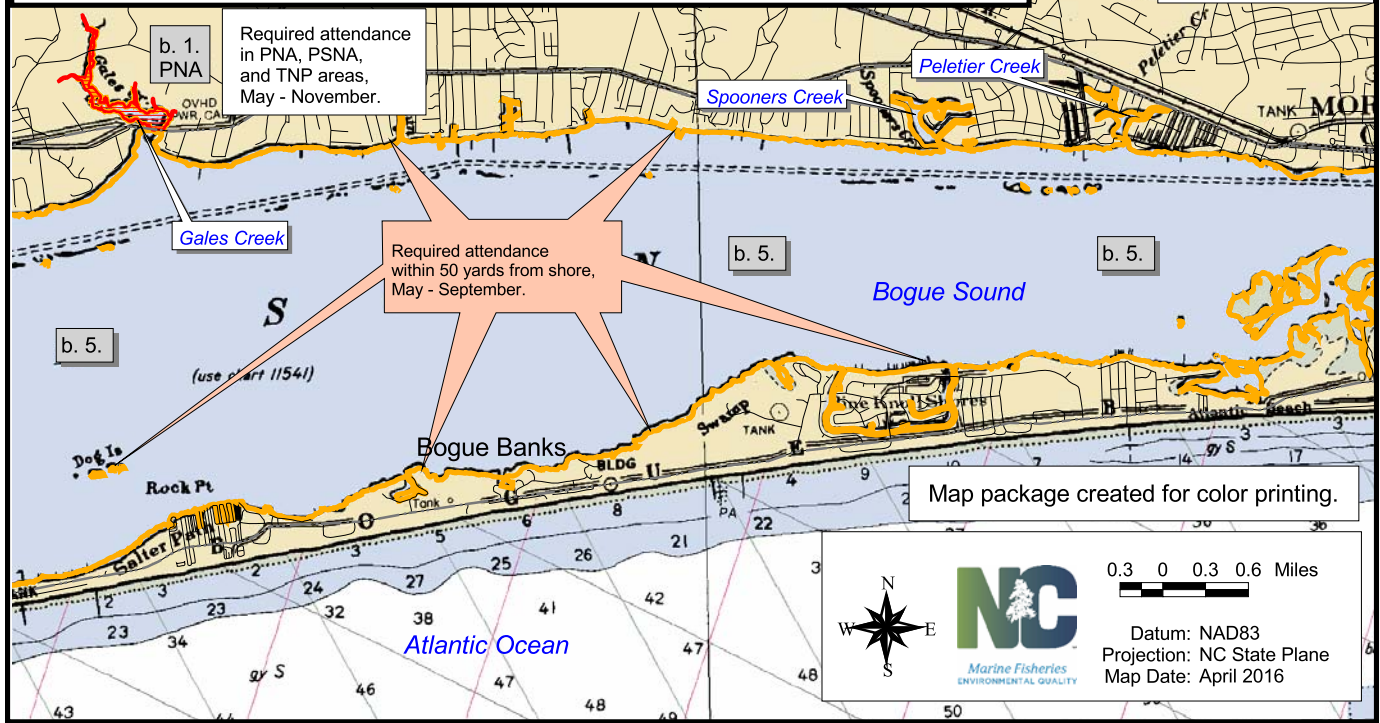


Map 18a. May 1 through September 30, INCLUDES 50 yards from shoreline, south and east of HWY 12 and south of Wainwright Island, to South Carolina State Line.

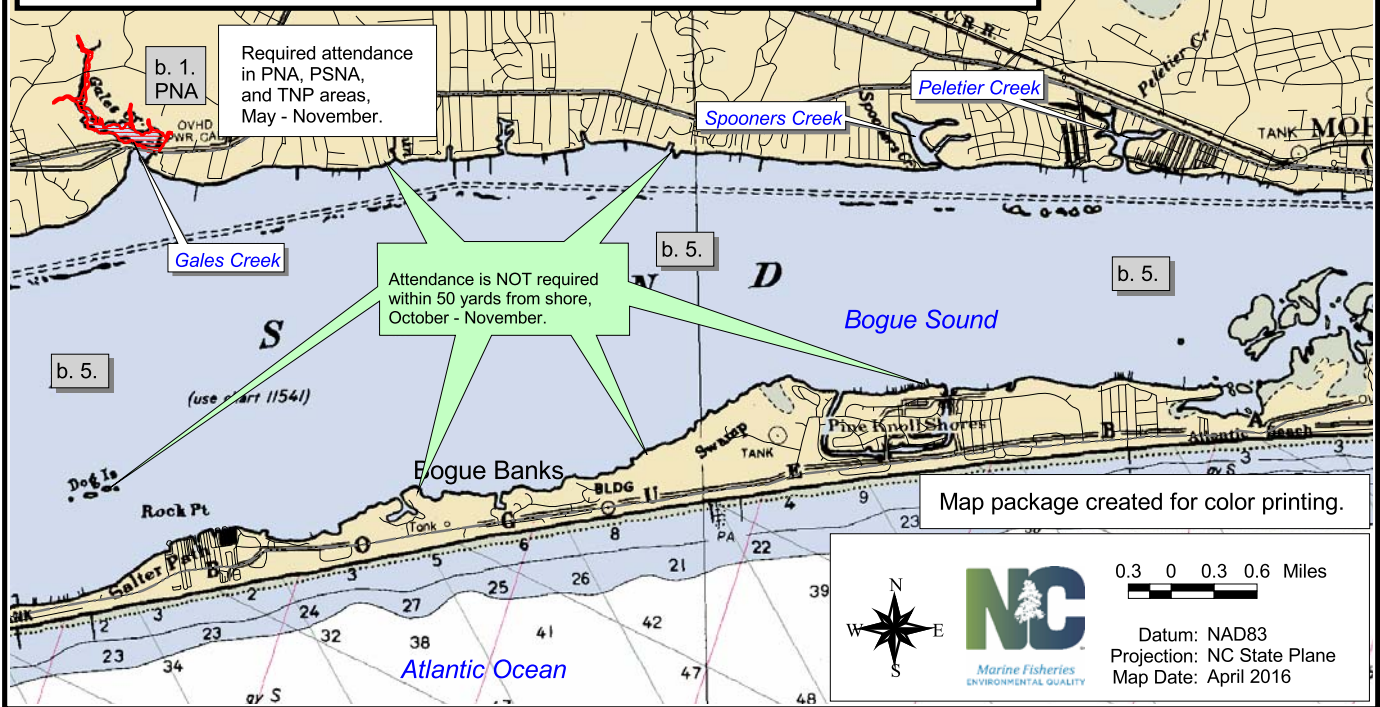
Background maps are NOAA nautical charts.



This map was produced for illustrative purposes as a general guide to assist the public. Informational data used for this map were collected from federal, state, county, and private organizations. While every effort is made to keep this map accurate and up-to-date, it is not intended to replace any official source. Under no circumstances shall the state of North Carolina be liable for any actions taken or omissions made from reliance on any information contained herein from whatever source nor shall the State be liable for any other consequences from any such reliance.

Map 18b. October 1 through November 30, EXCLUDES 50 yards from shoreline, south and east of HWY 12 and south of Wainwright Island, to South Carolina State Line.

Background maps are NOAA nautical charts.



Attended Gill Net Areas (AGNA)
(rule ID = 15A NCAC 03R .0112)

- Neuse, Pamlico, Pungo, + Trent Rivers
 - Outer Banks and Core Banks areas
 - within 50 yards from shoreline
 - within 200 yards from shoreline
- a. 1. = AGNA rule coding

Attended Gill Net Areas for Gill Nets Less Than 5 Inches Mesh Length

Map 18



Wildlife Resource Commission
INLAND WATERS ONLY, with WRC label
(rule ID = 15A NCAC 03Q .0202)



Military Danger Zones and Restricted Areas
(rule ID = 15A NCAC 03R .0102)



Primary Nursery Areas
(rule ID = 15A NCAC 03R .0103)



Permanent Secondary Nursery Areas
(rule ID = 15A NCAC 03R .0104)



Trawl Nets Prohibited, areas = 2, 4, 5, 8, 10, 11, 12 (rule ID = 15A NCAC 03R .0106)