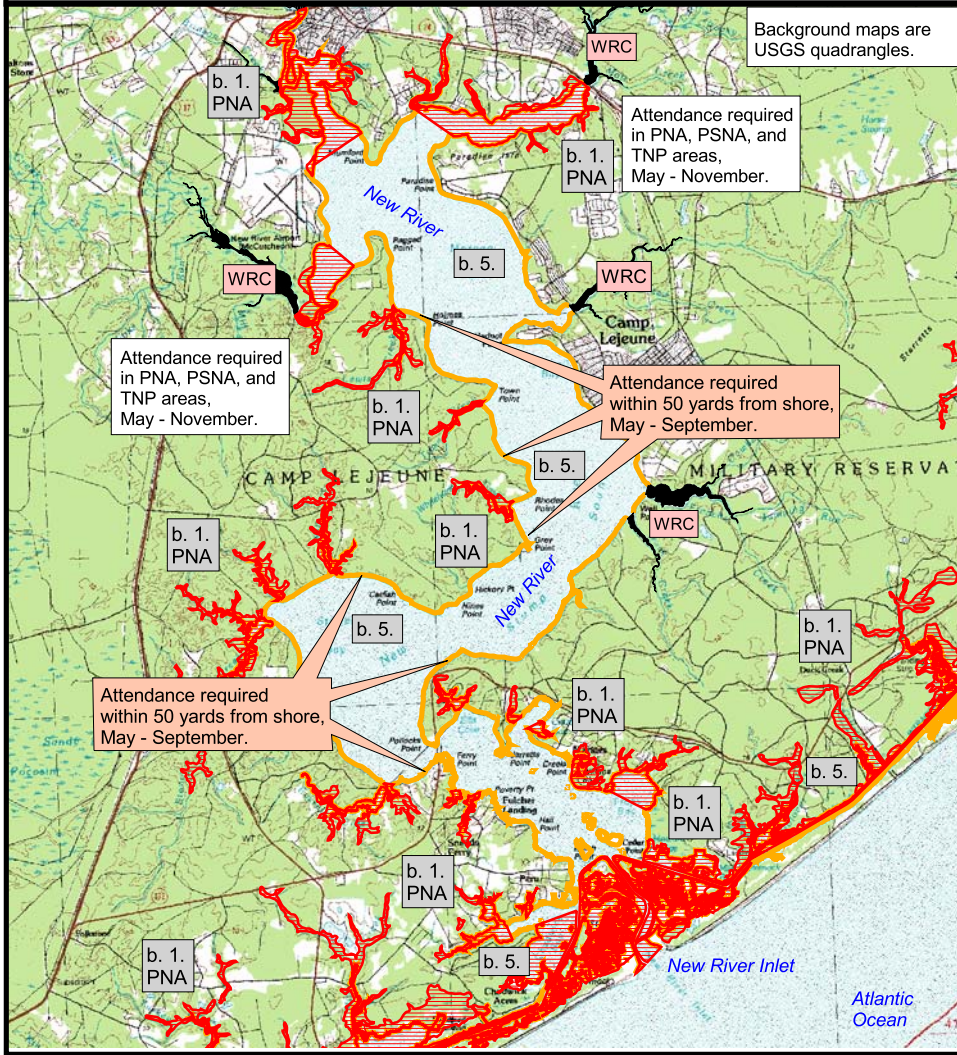
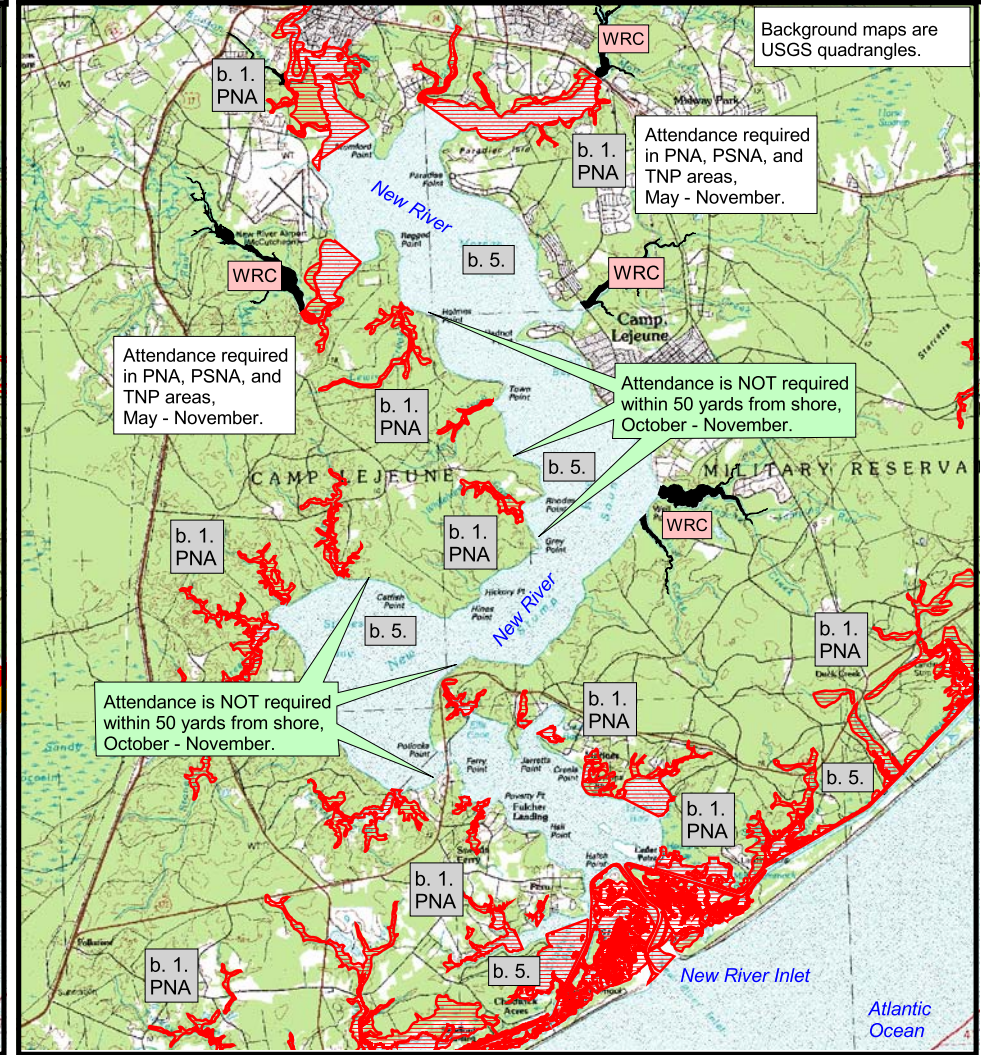


Map 24a. May 1 through September 30, INCLUDES 50 yards from shoreline, south and east of HWY 12 and south of Wainwright Island, to South Carolina State Line.



Map 24b. October 1 through November 30, EXCLUDES 50 yards from shoreline, south and east of HWY 12 and south of Wainwright Island, to South Carolina State Line.



This map was produced for illustrative purposes as a general guide to assist the public. Informational data used for this map were collected from federal, state, county, and private organizations. While every effort is made to keep this map accurate and up-to-date, it is not intended to replace any official source. Under no circumstances shall the state of North Carolina be liable for any actions taken or omissions made from reliance on any information contained herein from whatever source nor shall the State be liable for any other consequences from any such reliance.

**Attended Gill Net Areas (AGNA)**  
(rule ID = 15A NCAC 03R .0112)

- Neuse, Pamlico, Pungo, + Trent Rivers
- Outer Banks and Core Banks areas
- within 50 yards from shoreline
- within 200 yards from shoreline

**a. 1.** = AGNA rule coding

**NC**  
Marine Fisheries  
ENVIRONMENTAL QUALITY

Datum: NAD83  
Projection: NC State Plane  
Map Date: April 2016

### Attended Gill Net Areas for Gill Nets Less Than 5 Inches Mesh Length

Scale bar for maps a + b.

0.6 0 0.6 1.2 Miles

Map package created for color printing.

- WRC** Wildlife Resource Commission **INLAND WATERS ONLY**, with WRC label (rule ID = 15A NCAC 03Q .0202)
- MDZRA** Military Danger Zones and Restricted Areas (rule ID = 15A NCAC 03R .0102)
- PNA** Primary Nursery Areas (rule ID = 15A NCAC 03R .0103)
- PSNA** Permanent Secondary Nursery Areas (rule ID = 15A NCAC 03R .0104)
- TNP** Trawl Nets Prohibited, areas = 2, 4, 5, 8, 10, 11, 12 (rule ID = 15A NCAC 03R .0106)