

**STATE OF NORTH CAROLINA  
DEPARTMENT OF ENVIRONMENT AND NATURAL RESOURCES  
DIVISION OF MARINE FISHERIES**

**RULE: CRAB TRAWLING**

RULES PUBLISHED IN:  
NORTH CAROLINA MARINE FISHERIES COMMISSION RULES  
BY NORTH CAROLINA MARINE FISHERIES COMMISSION

RULE IDENTIFIED IN:  
15A NCAC 03L .0202: CRAB TRAWLING



DESCRIPTION OF CODING:

NCAC	NORTH CAROLINA ADMINISTRATIVE CODE
TITLE 15A	DEPARTMENT OF ENVIRONMENT AND NATURAL RESOURCES
CHAPTER 03	MARINE FISHERIES
SUBCHAPTER 03L	SHRIMP, CRABS, AND LOBSTER
.0202	CRAB TRAWLING

**CRAB TRAWLING**  
(15A NCAC 03L .0202)

**Rule History Note:**

Authority G.S. 113-134; 113-182; 113-221.1; 143B-289.52;

Eff. February 1, 1991;

Amended Eff. April 1, 2014; September 1, 2005;

August 1, 2004; March 1, 1994; September 1, 1991.

**Map legend and rule identifiers**

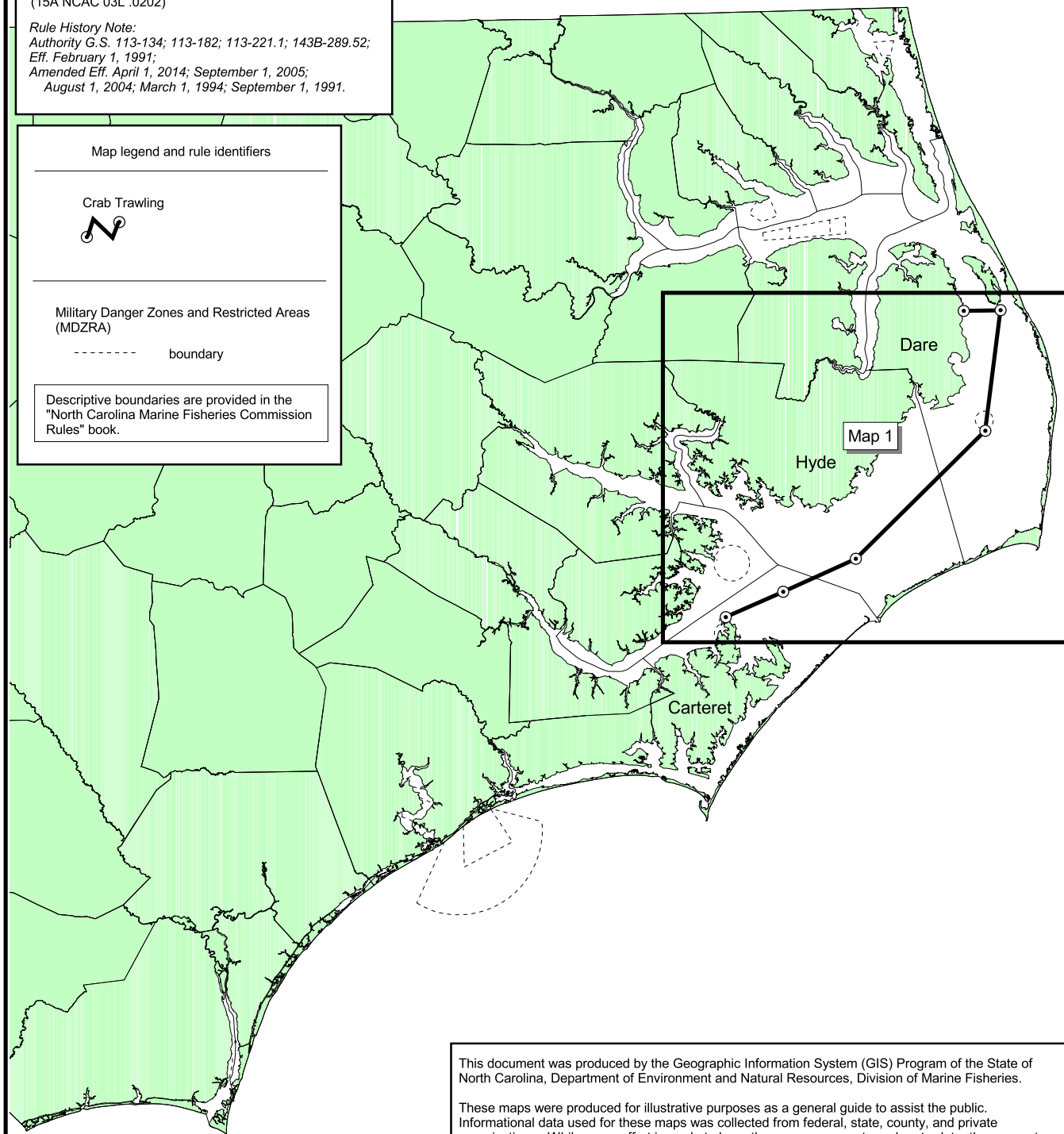
**Crab Trawling**



**Military Danger Zones and Restricted Areas (MDZRA)**

----- boundary

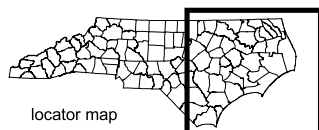
Descriptive boundaries are provided in the  
"North Carolina Marine Fisheries Commission  
Rules" book.



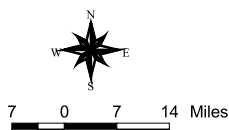
This document was produced by the Geographic Information System (GIS) Program of the State of North Carolina, Department of Environment and Natural Resources, Division of Marine Fisheries.

These maps were produced for illustrative purposes as a general guide to assist the public. Informational data used for these maps was collected from federal, state, county, and private organizations. While every effort is made to keep these maps accurate and up-to-date, they are not intended to replace any official source. Under no circumstance shall the State of North Carolina be liable for any actions taken or omissions made from reliance on any information contained herein from whatever source nor shall the State be liable for any other consequences from any such reliance.

**CRAB TRAWLING**  
(15A NCAC 03L .0202)



locator map



Index Map

Map Datum: North American Datum 1983  
(NAD83)  
Map Projection: North Carolina State Plane  
(NC State Plane)  
Map Date: April 1, 2014



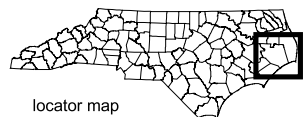
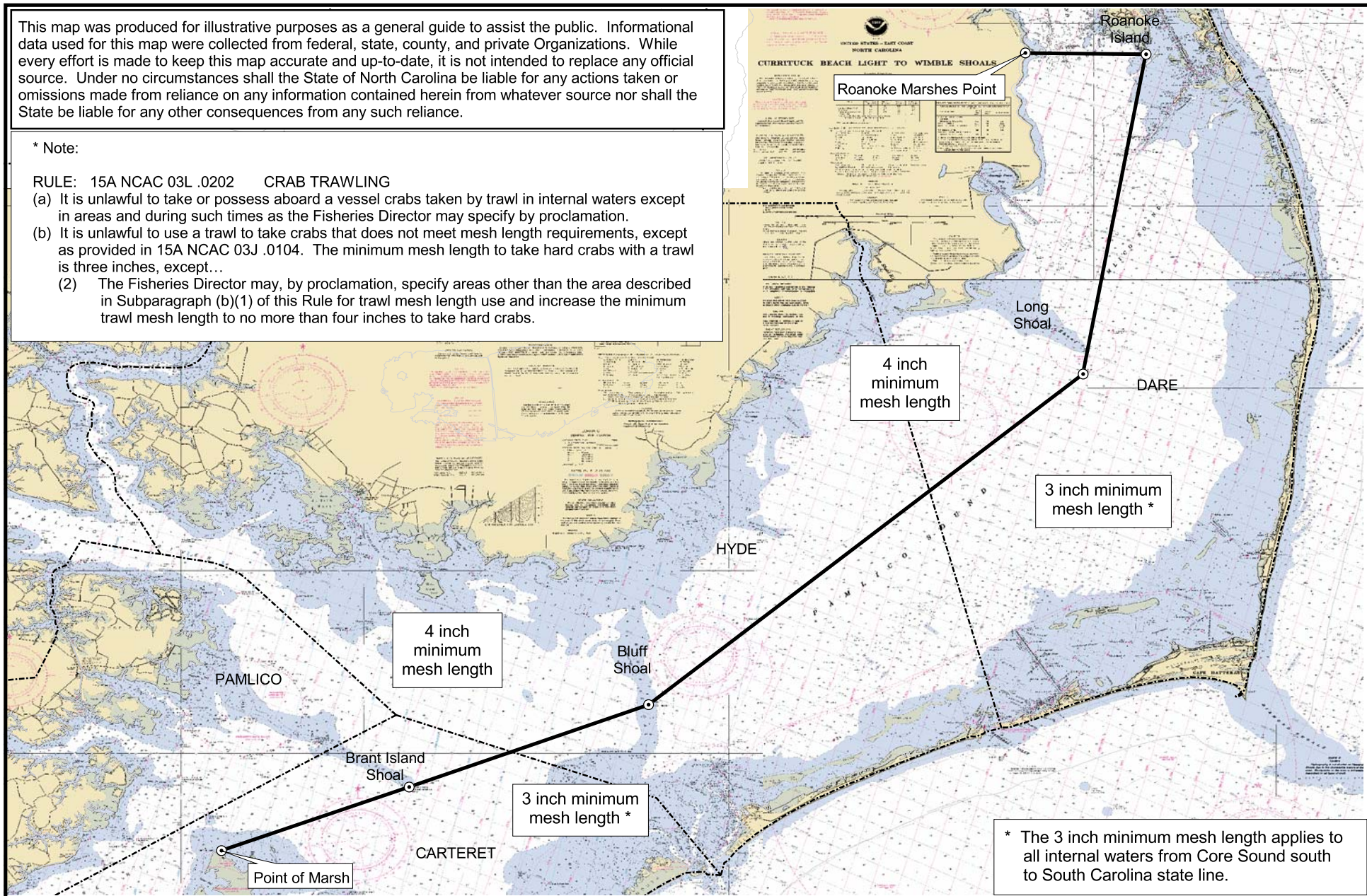


This map was produced for illustrative purposes as a general guide to assist the public. Informational data used for this map were collected from federal, state, county, and private Organizations. While every effort is made to keep this map accurate and up-to-date, it is not intended to replace any official source. Under no circumstances shall the State of North Carolina be liable for any actions taken or omissions made from reliance on any information contained herein from whatever source nor shall the State be liable for any other consequences from any such reliance.

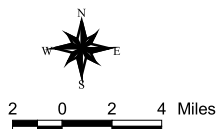
\* Note:

**RULE: 15A NCAC 03L .0202 CRAB TRAWLING**

- (a) It is unlawful to take or possess aboard a vessel crabs taken by trawl in internal waters except in areas and during such times as the Fisheries Director may specify by proclamation.
- (b) It is unlawful to use a trawl to take crabs that does not meet mesh length requirements, except as provided in 15A NCAC 03J .0104. The minimum mesh length to take hard crabs with a trawl is three inches, except...
  - (2) The Fisheries Director may, by proclamation, specify areas other than the area described in Subparagraph (b)(1) of this Rule for trawl mesh length use and increase the minimum trawl mesh length to no more than four inches to take hard crabs.

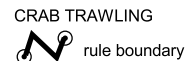


locator map



**CRAB TRAWLING**  
(15A NCAC 03L .0202)  
(b) (1) Pamlico Sound

Map 1



Background maps are NOAA  
Nautical Charts.

Map Datum: NAD83  
Map Projection: NC State Plane  
Map Date: April 1, 2014

