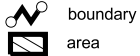


Pound Net Set Prohibited Areas
(15A NCAC 03R .0113)

Rule History Note:
Authority G.S. 113-134; 113-181; 113-182; 143B-289.52;
Eff. August 1, 2004.

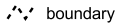
Map legend and rule identifiers

Pound Net Set Prohibited Areas



.0101 location from rule

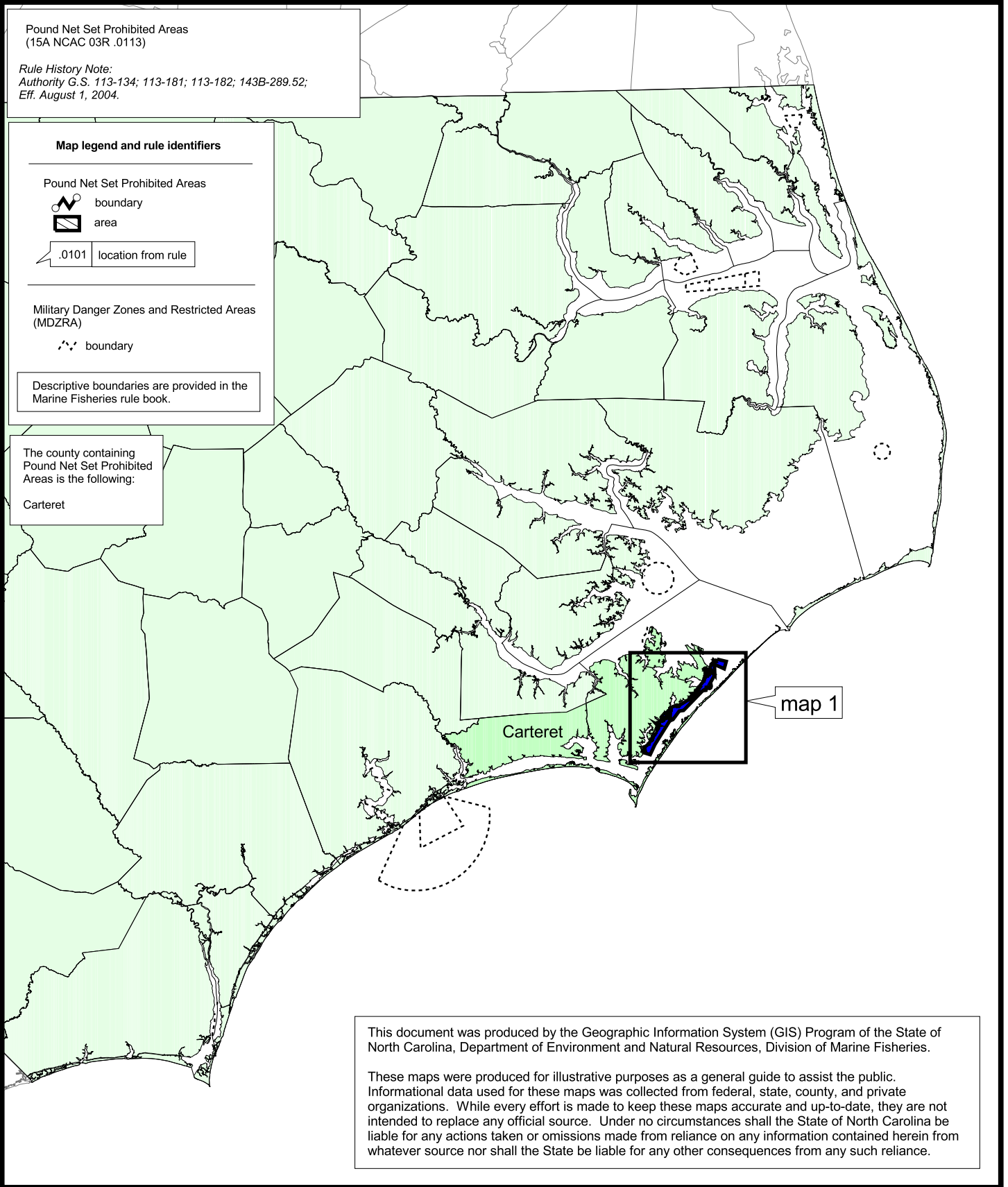
Military Danger Zones and Restricted Areas (MDZRA)



Descriptive boundaries are provided in the Marine Fisheries rule book.

The county containing Pound Net Set Prohibited Areas is the following:

Carteret



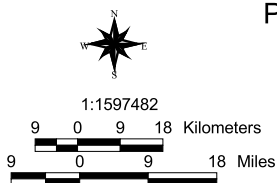
This document was produced by the Geographic Information System (GIS) Program of the State of North Carolina, Department of Environment and Natural Resources, Division of Marine Fisheries.

These maps were produced for illustrative purposes as a general guide to assist the public. Informational data used for these maps was collected from federal, state, county, and private organizations. While every effort is made to keep these maps accurate and up-to-date, they are not intended to replace any official source. Under no circumstances shall the State of North Carolina be liable for any actions taken or omissions made from reliance on any information contained herein from whatever source nor shall the State be liable for any other consequences from any such reliance.

Pound Net Set Prohibited Areas

15A NCAC 03R .0113

(Index Map)
Map A



Map Datum: North American Datum 1983 (NAD83)
Map Projection: North Carolina State Plane (NC State Plane)
Map Date: September 2006

