

## Sampled Residences

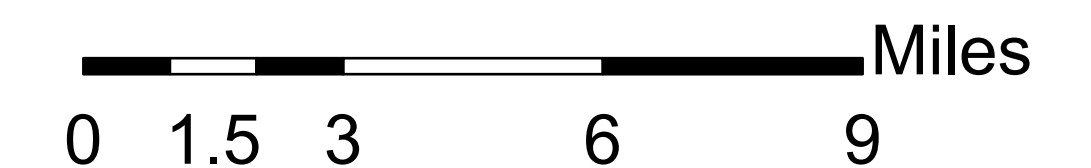
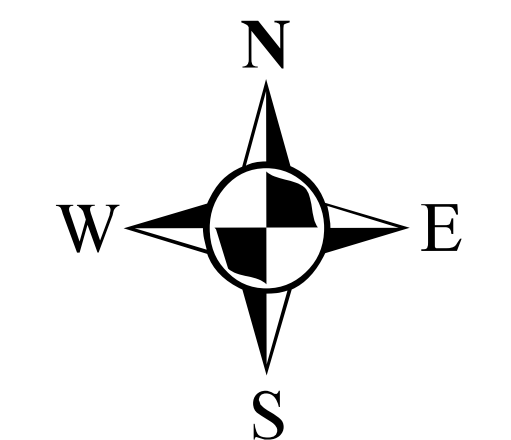
● No Detections or No PFAS  $\geq 10$ ppb; These homes do not qualify for water treatment (3,546)

● Any PFAS (Except GenX)  $\geq 10$ ppb or Total Sum PFAS  $\geq 70$ ppb; These homes qualify for RO treatment system (4,637)

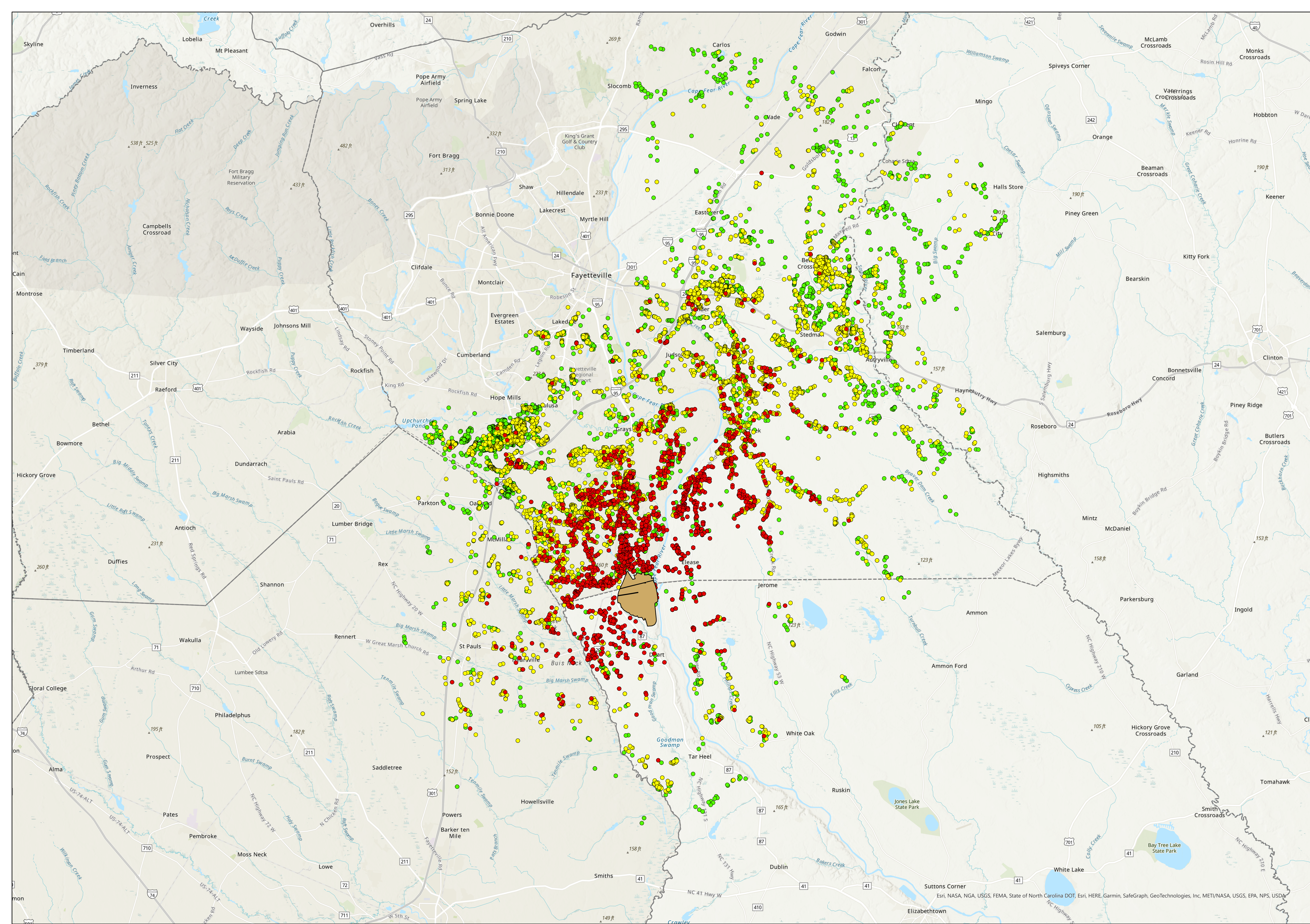
● GenX  $\geq 10$ ppb; These homes qualify for GAC system or municipal water (1,816)

■ Chemours Property Boundary

\*NOTES: To date, more than 10,000 residences have been sampled in the region surrounding the Fayetteville Works plant, including residences in Cumberland, Bladen, Robeson, and Sampson counties. Data reflected above may not include the most up-to-date information as new information is continuously being uploaded into the NCDEQ database. For more information or if you do not see your well listed, please contact the Division of Waste Management at (919) 707-8200.



Map Creation Date: 10/10/2022  
Map Author: Jared Wilson  
Data Sources: North Carolina Department of Environmental Quality, Chemours, ESRI



## PFAS Residential Well Sampling Fayetteville Region Results through 10/2022

