

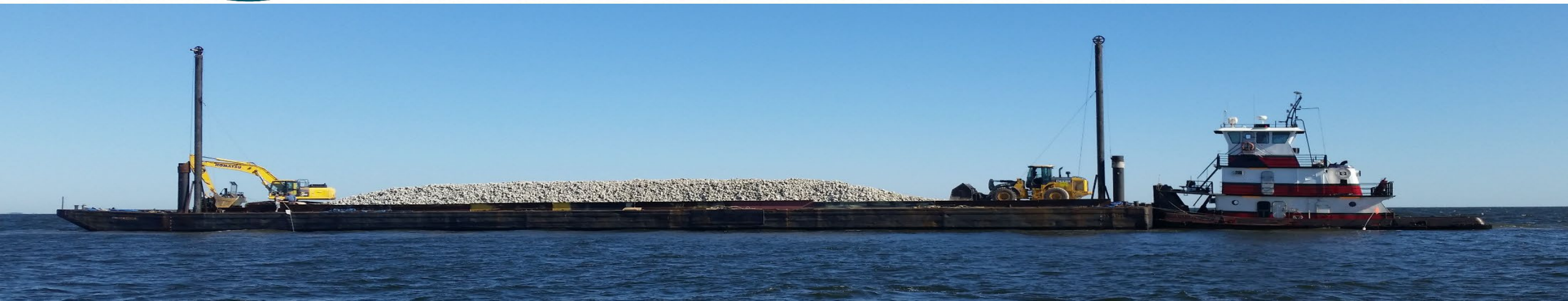


# *NCDMF Reef Building Programs*

*DEPARTMENT OF ENVIRONMENTAL QUALITY*

Marine Fisheries

Jason Peters | November 8, 2023

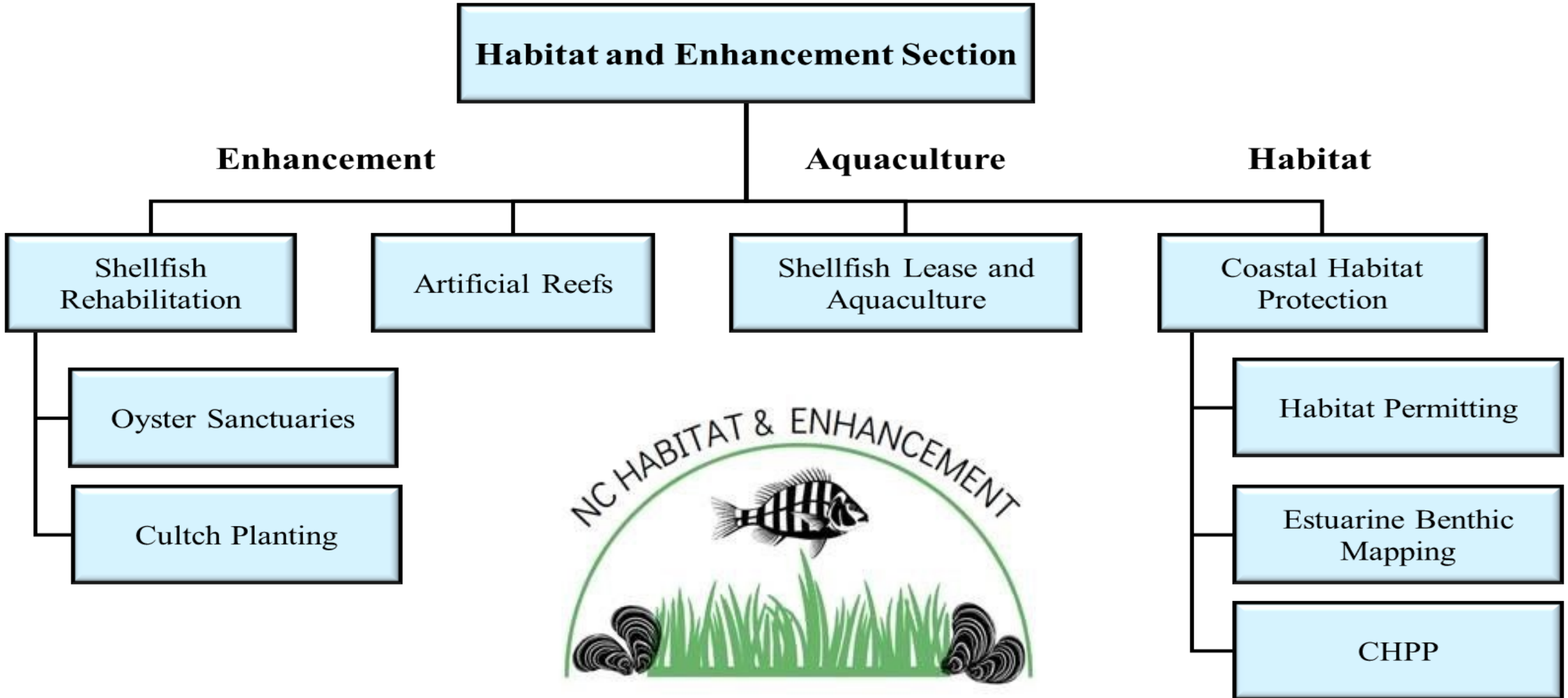


# *Overview*

- Organizational Structure
- Shellfish Rehabilitation Overview
  - Oyster Sanctuaries
  - Cultch Planting
- Artificial Reefs



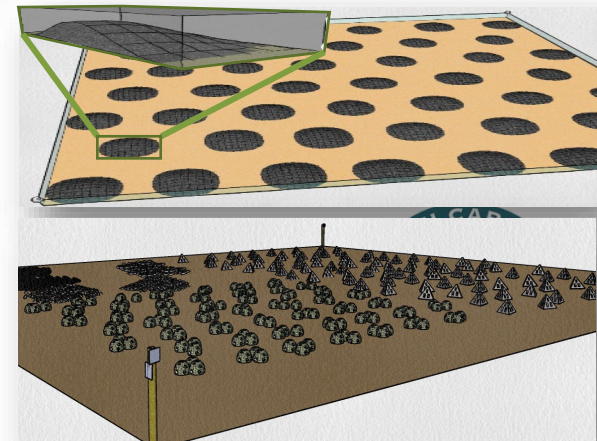
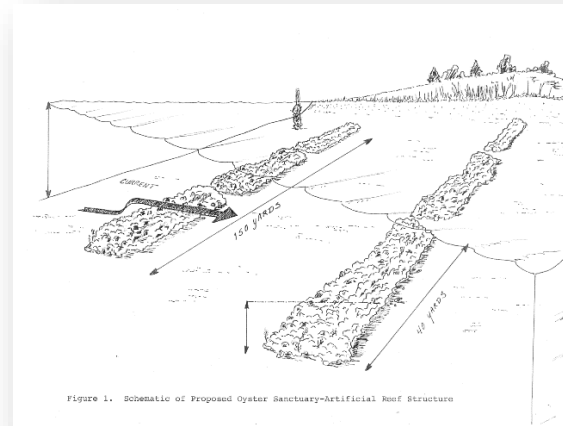
# Organizational Structure



# Shellfish Rehabilitation in NC: a two-part approach

## Part 1: Oyster Sanctuaries (no harvest)

- **Primary objective: supply viable larvae, system wide**
- Area of focus – Pamlico Sound
- General design:
  - Large areas ~40-80 acres each
  - High relief habitat (2-6')
  - Ridges, mounds, patches
  - Large aggregate rock (5-12") or other materials
- Material types: Limestone marl, crushed concrete, granite, basalt, ERUs (engineered reef units), recycled concrete pipe, precast concrete

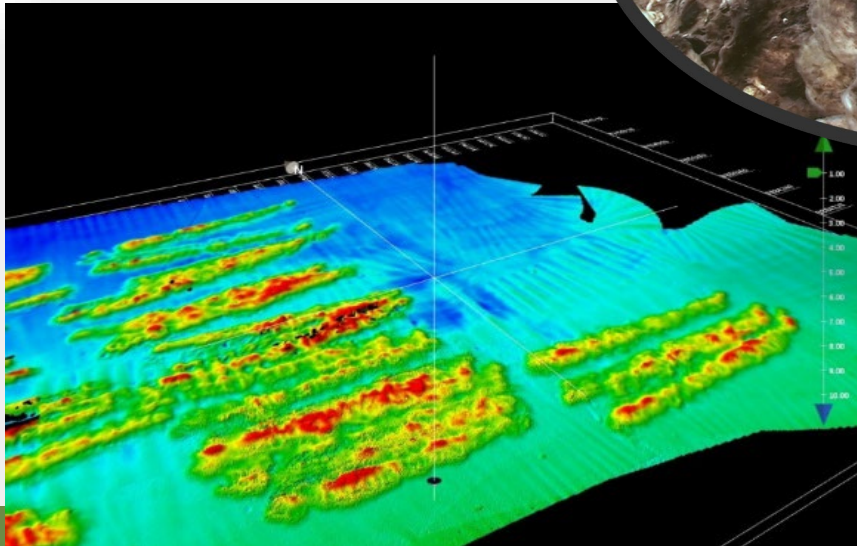


# Where are Oyster Sanctuaries located?

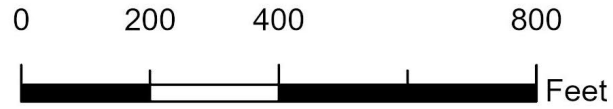


# Oyster Restoration in NC

## Oyster Sanctuaries: How do we do it?

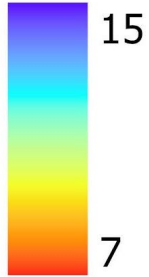


# OS-16 Cedar Island

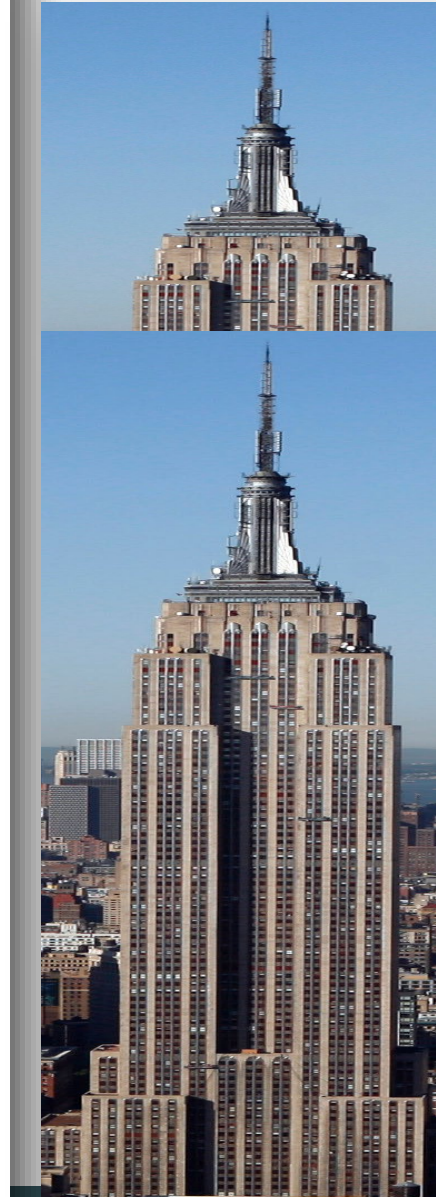
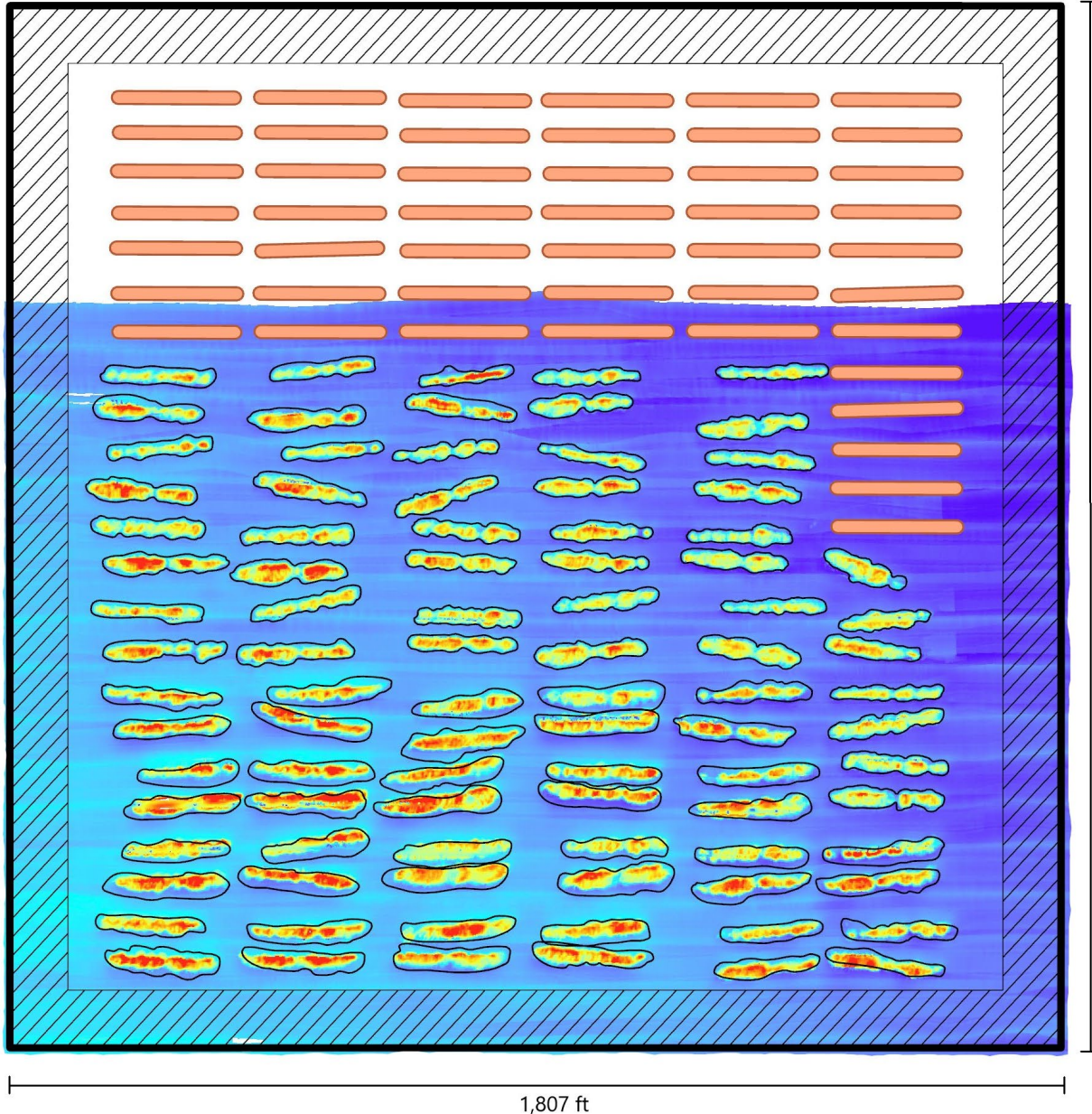


75 acres

Depth (ft)



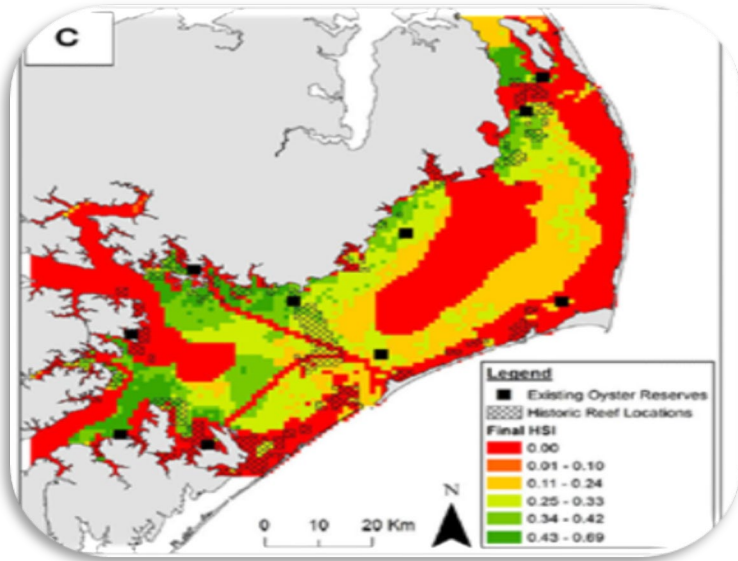
- Permit Boundary
- ▨ Sanctuary Buffer
- 2023 Deployment Lines



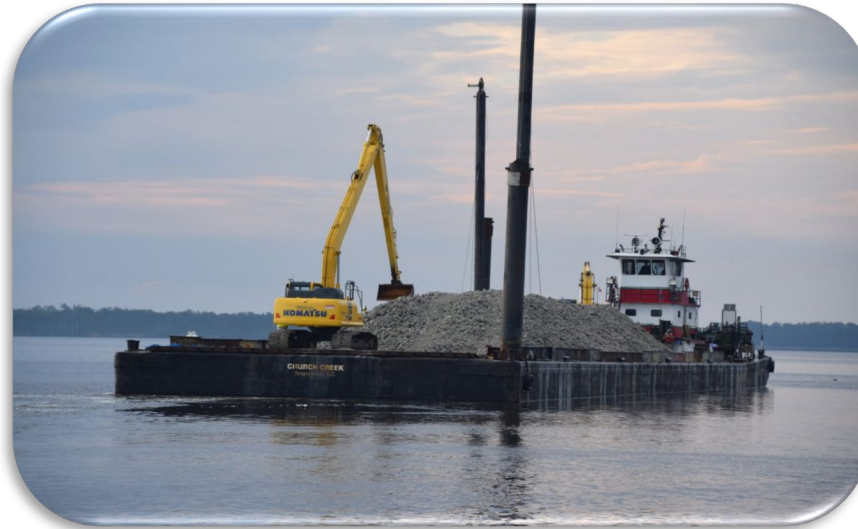
1.25  
Empire  
State  
Buildings



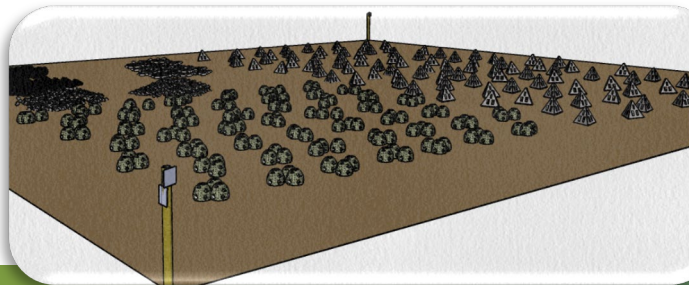
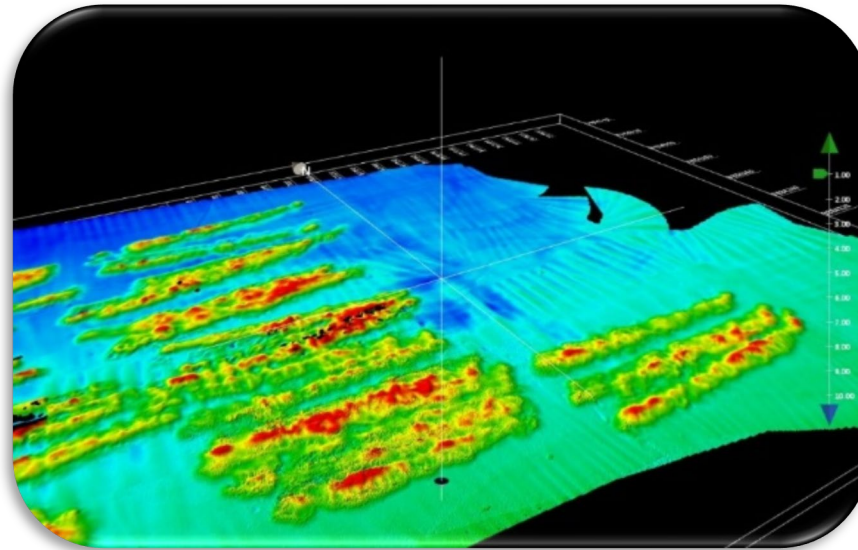
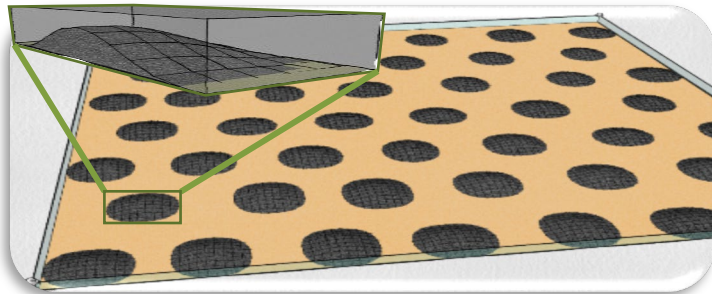
# Site Selection



# Construction



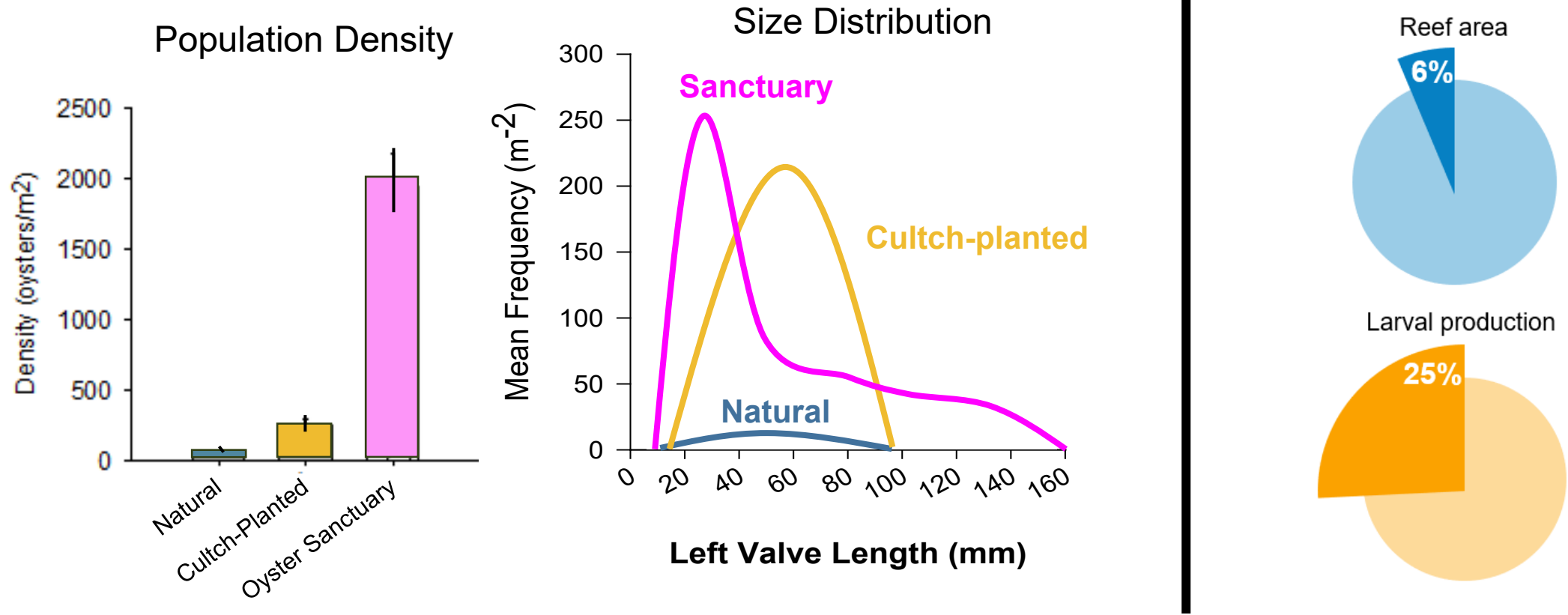
# Monitoring





# Why are Oyster Sanctuaries important?

## Sanctuaries strengthen and support the oyster population



Department of Environmental Quality



## *Recent Accomplishments: Oyster Sanctuaries*

- Cedar Island Oyster Sanctuary
  - 75 acres
  - 46,500 tons of marine limestone marl
  - 5,500 tons of recycled concrete
  - 104 million lbs./ 15,000 F-150s, ~386 staff days, 61 barge loads
- Successful monitoring season
  - ~22,000 oysters measured (136 locations on 14 sanctuaries)
  - Integrate results for improving future site selection
  - Draw comparisons to natural and cultch-planted reefs



# *Coming up for Oyster Sanctuaries*

- 3- year partnership with the North Carolina Coastal Federation
  - \$14.9 million NOAA Habitat Restoration and Resilience
  - ~50,000 tons per year (3x current volume)
  - Meet a statewide target of 500 combined acres of oyster sanctuary area

392 → 500+

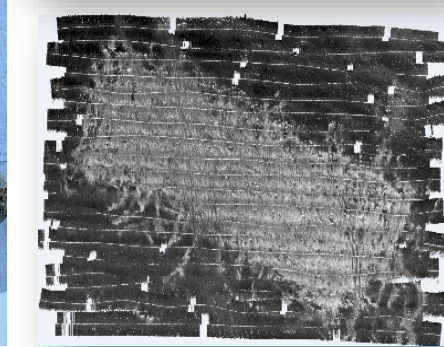
- Developing future goals beyond 500 acres

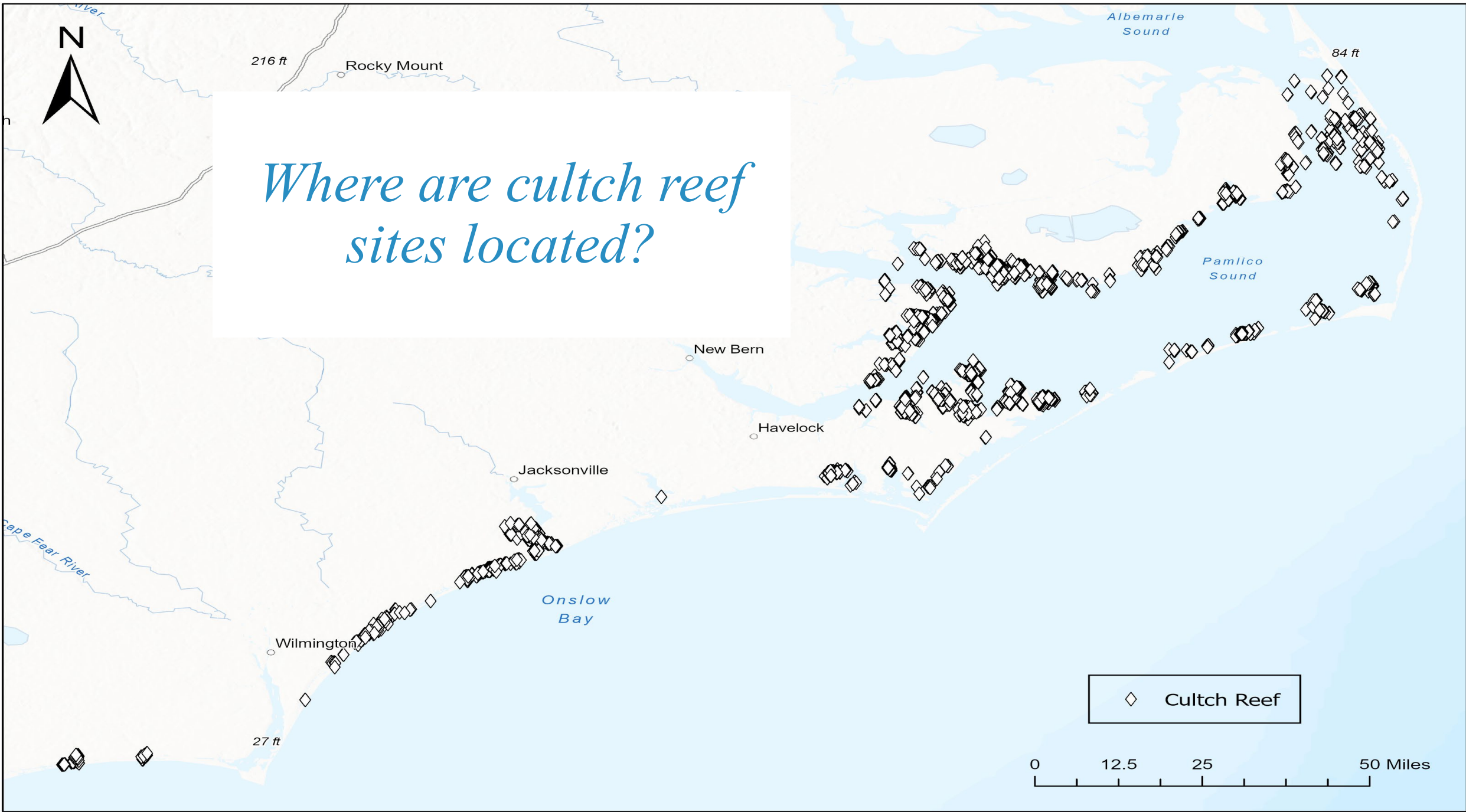


# Shellfish Rehabilitation in NC: a two-part approach

## Part 2: Cultch Planting (harvest)

- **Primary objective: restore available hard substrate for recruitment**
- Area of focus – Dare to Brunswick
- General design:
  - Small areas ~3 acres each
  - Low relief habitat (12-18")
  - Continuous veneer
  - Small materials (2-4" pieces)
- Material types: Oyster shell, grade ASTM 4 limestone marl





*Where are cultch reef sites located?*

◇ Cultch Reef

0 12.5 25 50 Miles



216 ft

84 ft

27 ft

# *Cultch Planting: how do we do it?*



# Heavy Equipment Fleet



6 vessels  
7 wheel-loaders  
1 semi tractor & lowboy trailer  
3 dump trucks  
2 conveyors



# Recent Accomplishments: Cultch Planting

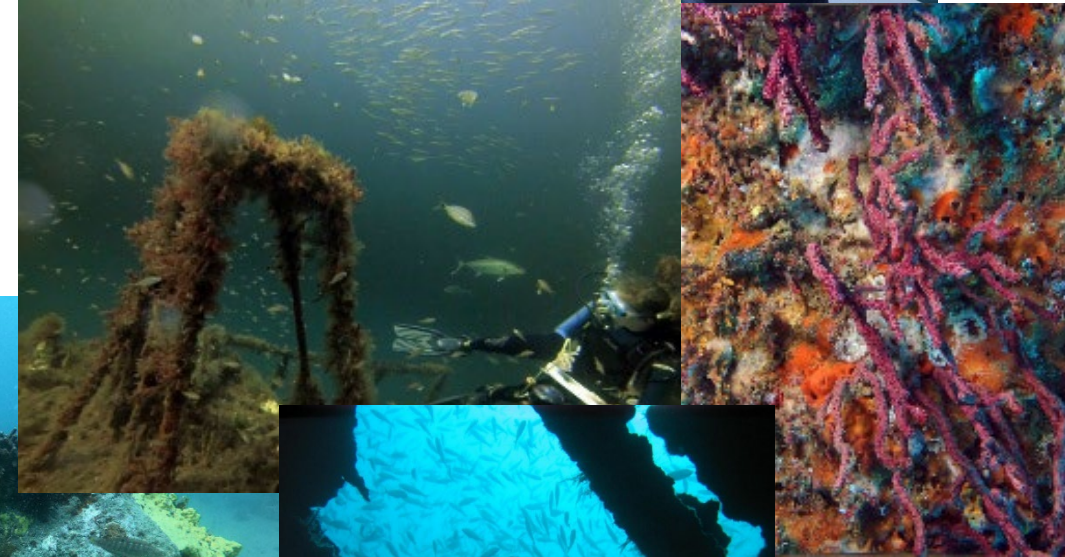
- 2021-2023: 127 combined acres built (894,878 bushels, 36 sites)
- Developing plans on alternate fishery management strategies (rotational harvest)
- New sampling program
- Purchased new 120' flagship vessel, *RV Oyster Creek*





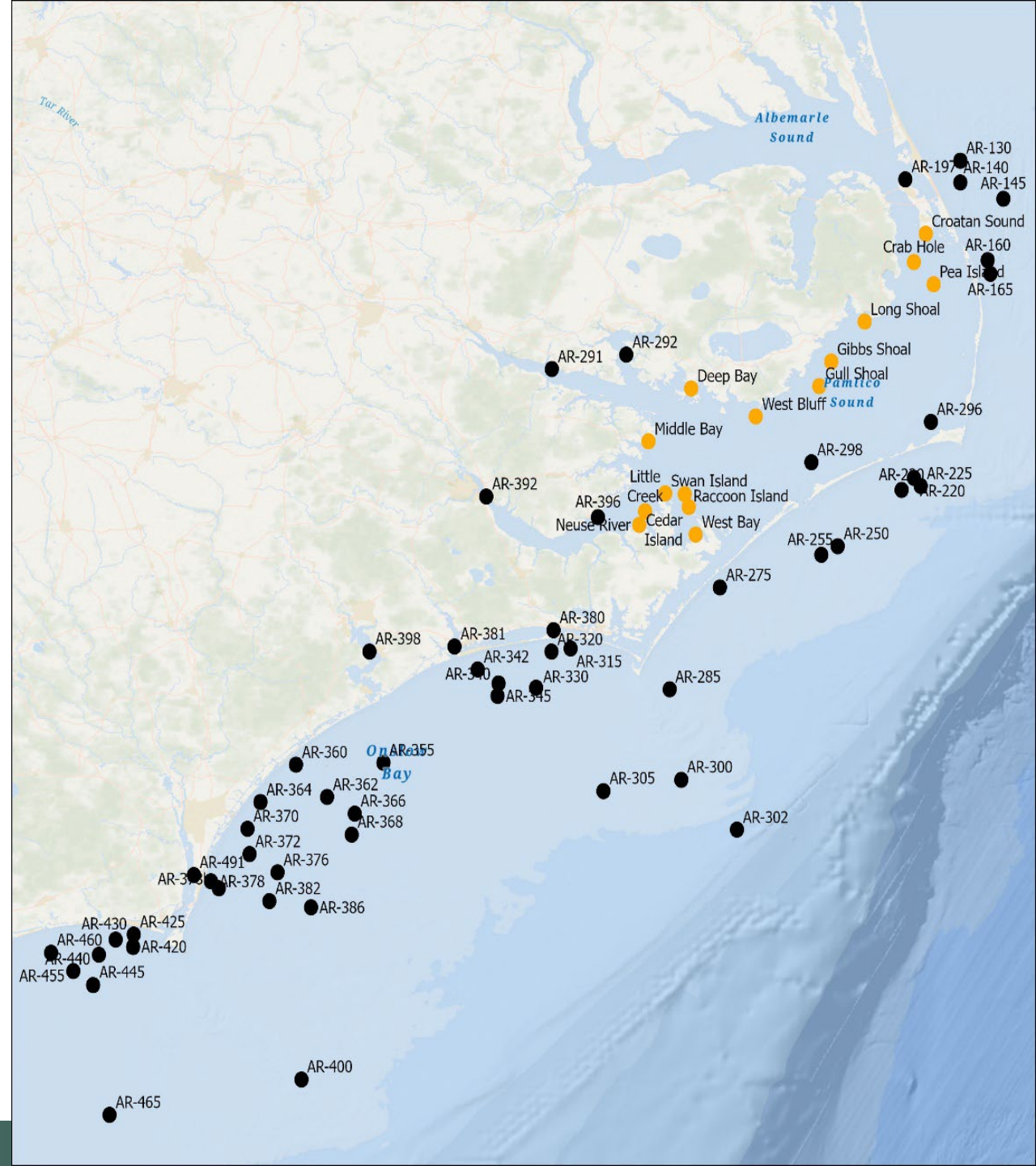
# What are Artificial Reefs?

- Hardbottom habitat built using non-natural materials, placed in featureless areas
- Provide fishing and diving opportunities: sited with public accessibility in mind
- Reef design: stable and durable
  - Ships
  - Demolished bridges
  - Concrete pipe
  - Reef balls



# NC Artificial Reef Program

- NC Manages 70 reefs
  - 27 estuarine (10-140 ac.)
    - 15 oyster sanctuaries
  - 43 offshore (160-650 ac.)
- Funded mostly by Sportfish Restoration and CRFL



# *Artificial Reefs: How do we do it?*



# Recent Accomplishments: Artificial Reefs

- 17 Artificial reefs enhanced 2021-2023:

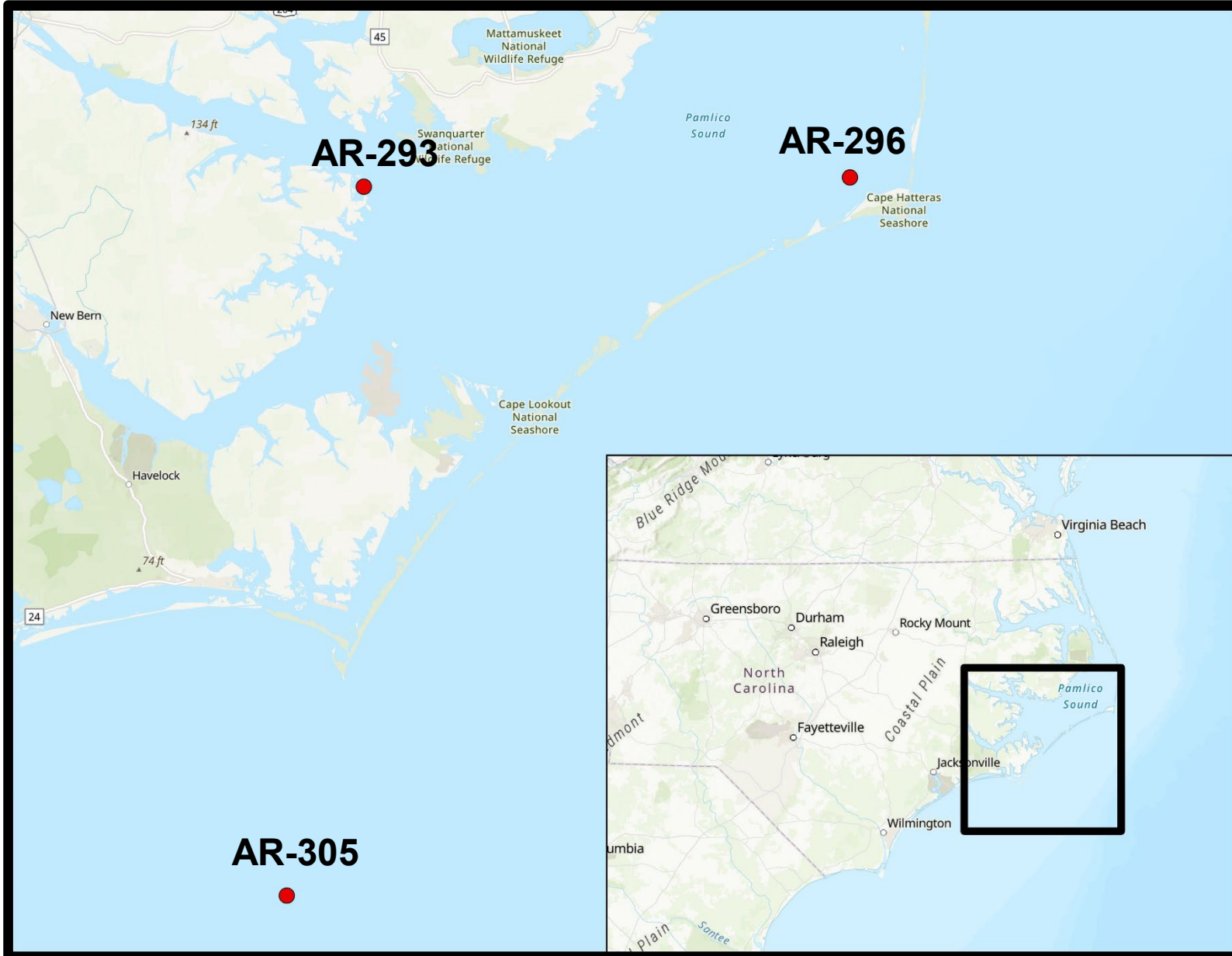
- AR-130 → ~13,200 tons concrete (Bonner Bridge)\*
- AR-140 → ~14,400 tons concrete (Bonner Bridge)\*
- AR-145 → ~15,600 tons concrete (Bonner Bridge)\*
- AR-160 → ~31,200 tons concrete (Bonner Bridge)\*
- AR-165 → 532 reef balls, 108' tugboat *Valley Forge*, 75' caisson door
- AR-250 → ~1,200 tons concrete (Bonner Bridge)\*
- AR-255 → ~1,200 tons concrete (Bonner Bridge)\*
- AR-291 → 100 reef balls
- AR-293 → 202 reef balls, 100 Natrx units
- AR-305 → 1,700 tons concrete pipe
- AR-320 → ~3,600 tons concrete (Bonner Bridge)\*
- AR-340 → ~1,200 tons concrete (Bonner Bridge)\*
- AR-360 → 31 Eternal Reefs
- AR-368 → 1000 tons pipe, 170 reef balls
- AR-380 → 200 reef balls
- AR-372 → 25 Veteran's Memorial Reefs
- AR-430 → ~2000 tons pipe
- AR-460 → ~2000 tons pipe

\*80,000 tons of concrete - the largest reef enhancement in NC history

- Hydrographic surveys of ~ 7,600 acres of reef habitat: Artificial Reef Guide
- Visual diver surveys of ~ 30 ocean Artificial Reefs



# Recent and Upcoming Artificial Reef Projects



October 2023

AR-293

Inshore, Pamlico Point  
202 Reef balls and 100  
NATRX units

Spring 2024

AR-296

Inshore, Buxton/ Clam Shoal  
Aggregate rock, concrete

Summer 2024

AR-305

Offshore, Cape Lookout  
Vessel TBD



## *Summary*

- Healthy reef habitat is critically important for fisheries
- Investing in reef enhancement is an insurance policy to help sustain fisheries for future generations
- NCDMF is a clear leader:
  - Most robust shellfish rehabilitation efforts among coastal states
  - One of the largest and most active Artificial Reef programs in the nation
- As a state, we should be proud of our accomplishments, but humbly recognize the need for improvement
  - Public engagement!



# Questions



Jason Peters

Program Supervisor

Oyster Sanctuaries | Cultch Planting | Artificial Reefs

