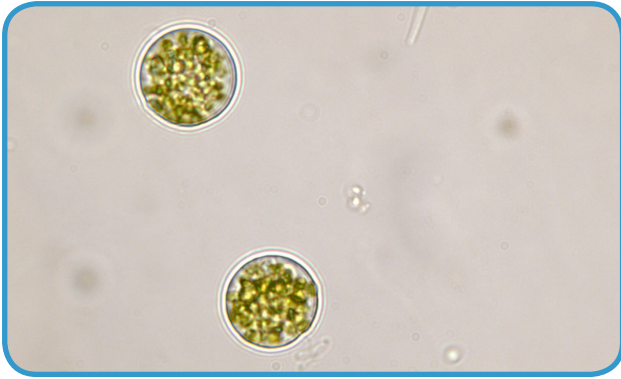
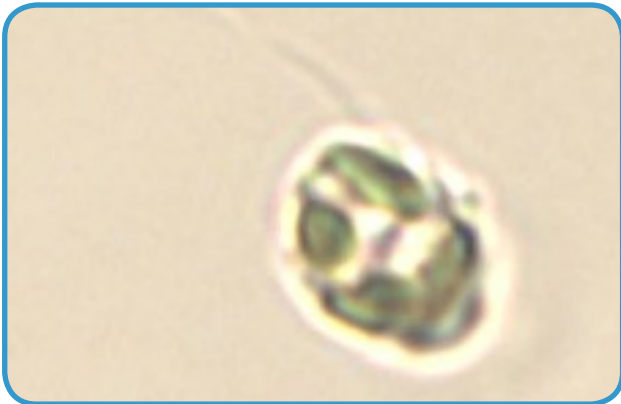


## fact sheet

*Chattonella*

Raphidophytes - Aerial view

*Heterosigma***Algal Group:**

Chromophyta

**Description:**

Raphidophytes *Heterosigma* and *Chattonella* are single-celled algae that swim with two whip-tails (flagellae). They are sometimes difficult to identify under the microscope. Preserved cells may lose their shape altogether. Live *Heterosigma* cells may look like a pancake or a sack of potatoes. Live *Chattonella* cells may look like a pancake or an oval which tapers at one end.

**Habitat:**

Raphidophytes are found in the coastal and brackish waters. Both *Heterosigma* and *Chattonella* are common in North Carolina's coastal brackish rivers.

**Significance:**

*Heterosigma* often blooms in North Carolina's brackish rivers during warm weather. *Chattonella* is usually seen in summer at low densities. While raphidophytes have been associated with fish kills in other parts of the world, no fish kills have been attributed to raphidophytes in North Carolina.