

# **Ballance Site Riparian Buffer Restoration Project Monitoring Report (Year 2)**

**Wayne County, North Carolina**

**Monitoring Firm: Baker Engineering NY, Inc**

**Monitoring Firm POC: Kevin Tweedy, PE**

**EEP Project Manager: Guy Pearce**

**Prepared for: NC Ecosystem Enhancement Program**



**Report Prepared By: Baker Engineering NY, Inc.  
8000 Regency Parkway, Suite 200  
Cary, NC 27518**



**Baker**

**Date Submitted: November 2007**

## **EXECUTIVE SUMMARY**

The Ballance Site Riparian Buffer Restoration Project was designed by Baker Engineering and constructed by Riverworks, Inc. The goals and objectives of this project were as follows:

- Restore 52 acres of riparian buffer along Nahunta Swamp and eleven of its tributaries
- Enhance 4 acres of riparian buffer
- Restore riparian buffers at least 50 feet in width to areas that historically supported hardwood forest, bottomland ecosystems
- Restore a “Coastal Plain, Bottomland Hardwood Forest” vegetation community, as described by Schafale and Weakley (1990)

This report is being submitted to document completion of the Year 2 monitoring.

<b>1.0</b>	<b>BACKGROUND INFORMATION.....</b>	<b>1</b>
1.1	Project Goals and Objectives .....	1
1.2	Project Location .....	2
1.3	Project Description.....	2
1.4	Construction .....	5
<b>2.0</b>	<b>Monitoring Results – Year 2 (2007) Data .....</b>	<b>7</b>
2.1	Vegetation .....	7
2.2	Areas of Concern.....	7

**Tables and Figures**

<b>Table</b>	<b>1</b>	Background Information.....	1
<b>Table</b>	<b>2</b>	Summary of As-built Lengths and Restoration Approaches.....	5
<b>Table</b>	<b>3</b>	Planting Species for Ballance Buffer Restoration.....	6
<b>Table</b>	<b>4</b>	Initial Density, Year 1 and Year 2 Monitoring of Trees for the Vegetation Sampling Plots .....	7
<b>Figure</b>	<b>1</b>	Project Vicinity Map.....	3
<b>Figure</b>	<b>2</b>	Hydrography and Restoration Plan .....	4

**Appendices**

<b>Appendix</b>	<b>1</b>	As-built Plan Sheets
<b>Appendix</b>	<b>2</b>	Photo Log

## 1.0 BACKGROUND INFORMATION

The Ballance properties border approximately 5,000 linear feet (LF) of the northern bank of Nahunta Swamp. Nahunta Swamp flows in a general west-to-east direction along and through the property boundaries. There are approximately 11,826 LF of streams and ditches within the 56 acres of the conservation easement. The properties are bounded to the south by Nahunta Swamp and to the west, east, and north by adjacent landowners.

The site is part of a privately-owned farm that is used primarily for row crop agricultural, hog production, and pasture. The streams on the project site were channelized, and riparian vegetation had been cleared in the field areas such that cattle grazing pastures and row crops extended up to the top of the stream banks. Drainage ditches were excavated in parts of the site to provide additional drainage for agricultural production.

A summary of the project background information is provided in Table 1.

<b>Table 1. Background Information</b>	
<b>Project</b>	Ballance Site Riparian Buffer Restoration Project
<b>Designer</b>	Baker Engineering NY, Inc. 8000 Regency Parkway, Cary, NC, 27518 (919) 463-5488
<b>Contractor</b>	Riverworks, Inc.
<b>Project County</b>	Wayne County
<b>Directions to Project Site</b>	Travel on US-64 E / US-264 E. toward Wilson / Rocky Mount. Merge onto US-264 E toward NC-97 / Wilson / Greenville. Merge onto US-301 N. Turn Right onto US-117. Travel US-222 East. Turn right onto Benton Pond Road. Site is on the right.
<b>USGS Hydro Unit</b>	03020203-060020
<b>NCDWQ Sub-basin</b>	03-04-07
<b>Project Length/Acres</b>	N/A   56 Acres
<b>Restoration Approach</b>	Enhance riparian functions to 4 acres along Nahunta Swamp Restore riparian functions to 52 acres along Nahunta Swamp
<b>Date of Completion</b>	Planting completed on February 15, 2006; Fencing completed on March 10, 2006.
<b>Monitoring Dates</b>	Seasonally through each growing season for 5 years

### 1.1 Project Goals and Objectives

This riparian buffer restoration project provides numerous ecological benefits within the Neuse River basin. While many of these benefits are limited to the project area, others, such as pollutant removal and improved aquatic and terrestrial habitat, have more far-reaching effects. Expected improvements to water quality, hydrology, and habitat are as follows:

- Nutrient removal
- Increased dissolved oxygen concentrations
- Improved stream bank stability
- Reduced water temperature by increasing shading
- Restoration of terrestrial habitat
- Improved aesthetics.

## 1.2 Project Location

The Ballance site is located in northeast Wayne County, near the Wayne-Greene-Wilson county lines. The site is approximately 3.0 miles east of the Town of Fremont, and 9.0 miles northeast of the City of Goldsboro, and west of the intersection of NC 222 and NC 111 in Wayne County, North Carolina (Figure 1).

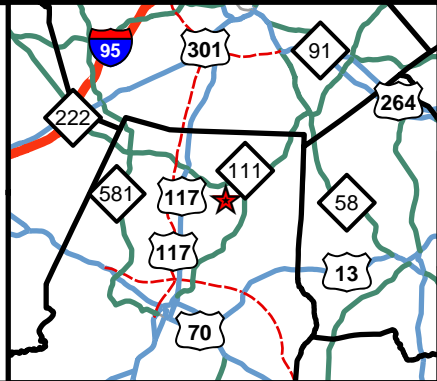
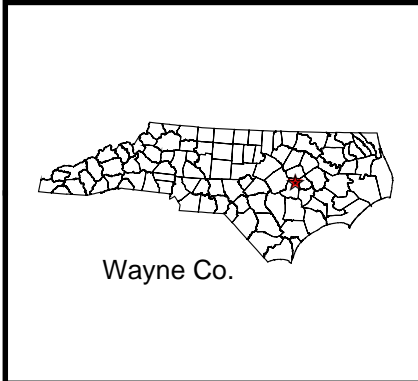
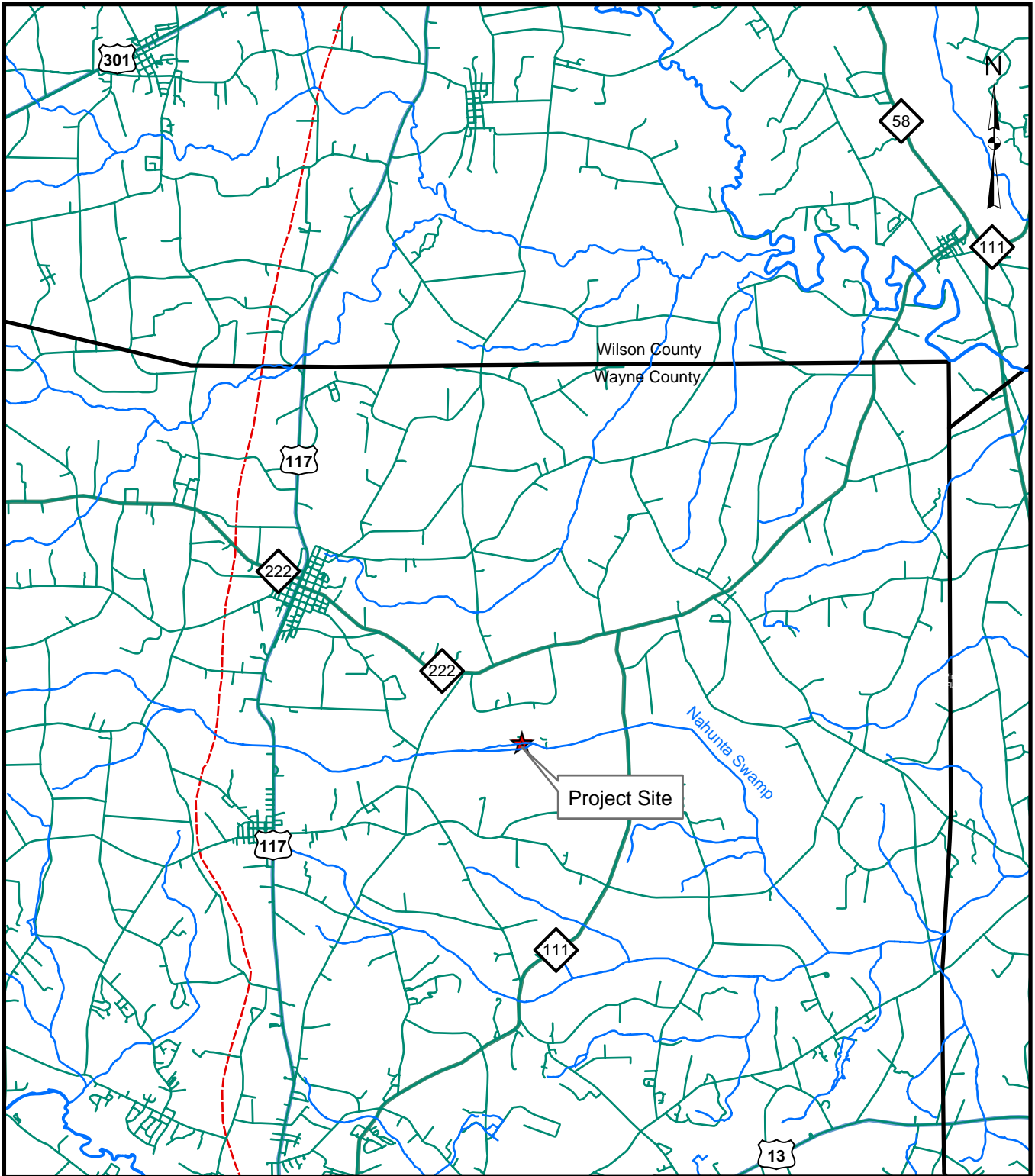
## 1.3 Project Description

Prior to restoration, land use within the site consisted of pastureland for cattle grazing, hog production, and row crop agricultural production. The majority of the floodplain vegetation had been removed and fields had been created for crop production and pastureland. The landowner has an active hog operation on site and prior to restoration, used these fields for the spray application of swine lagoon effluent. Effluent was spread across the field areas in close proximity to the ditches and streams on the site. The landowner has now discontinued the use of these fields for application of effluent and the buffer areas have been placed under a conservation easement.

For analysis and design purposes, the on-site streams were divided into eleven reaches. The reach locations are shown in Figure 2. The reaches were numbered sequentially, moving from west to east, with unnamed tributaries carrying a "UT" designation.

Eleven UTs to Nahunta Swamp (UT1 through UT11) drain the majority of the project site. Nahunta Swamp lies along the southern boundary of the Ballance site and flows in a general west-to-east direction along the property boundaries. In most areas, only herbaceous species were present along the stream and ditch banks, and fields were maintained to the top of the streambanks. The lack of riparian vegetation left the channelized systems open to sunlight and without adequate filtration of agricultural runoff and nutrient loading. Along reaches that were not regularly maintained, woody riparian vegetation was sparse, existing only in narrow buffer widths adjacent to the channels. As a result, filamentous algae and other aquatic plants were common in the channels.

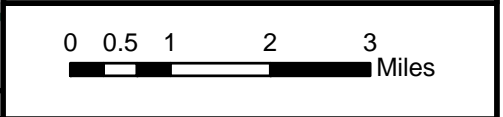
Nahunta Swamp and the smaller channels through the restoration site originate in rural areas and are considered to be at least intermittent channels. The stream lengths of Nahunta Swamp and the UTs, with restoration approaches are provided in Table 2. The primary objective of the restoration was to enhance areas of existing riparian buffer vegetation and to reforest the cleared floodplain with native species along Nahunta Swamp and eleven UTs within the conservation easement. Primary activities within the site are designed to preserve plant community assemblages and to enhance and restore native floodplain vegetation through site preparation and subsequent plantings.

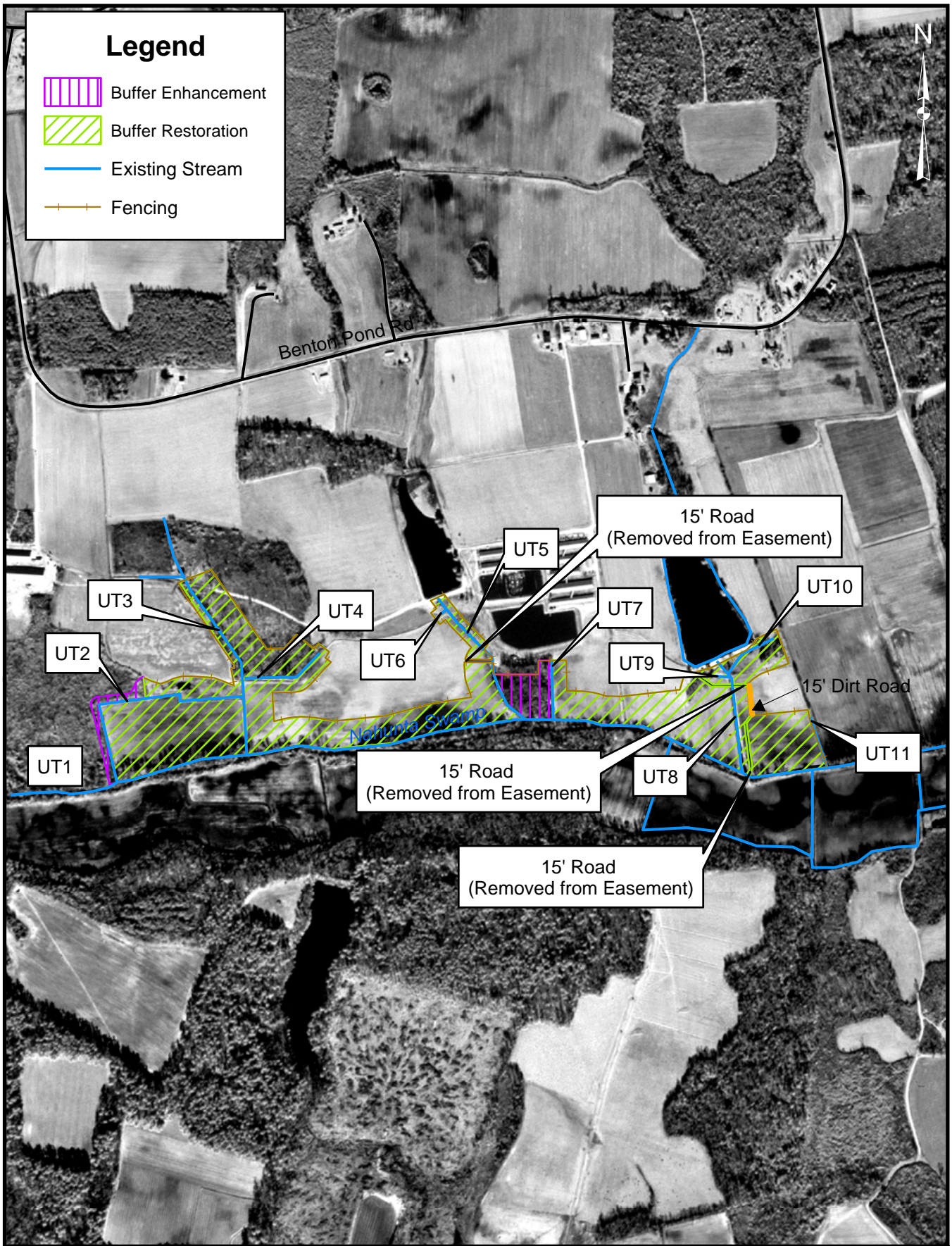


**Baker**





Baker Engineering NY, Inc.  
 8000 Regency Parkway  
 Suite 200  
 Cary, North Carolina 27518  
 Phone: 919.463.5488  
 Fax: 919.463.5490

Figure 1. Project Vicinity Map  
Ballance Site





**Legend**

-  Buffer Enhancement
-  Buffer Restoration
-  Existing Stream
-  Fencing

UT1, UT2, UT3, UT4, UT5, UT6, UT7, UT8, UT9, UT10, UT11

15' Road (Removed from Easement)

15' Road (Removed from Easement)

15' Road (Removed from Easement)

15' Dirt Road

Benton Pond Rd

New Hope Stream



Baker Engineering NY, Inc.  
 8000 Regency Parkway  
 Suite 200  
 Cary, North Carolina 27518  
 Phone: 919.463.5486  
 Fax: 919.463.5490

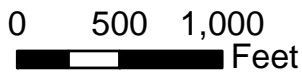


Figure 2.  
 Hydrography and Restoration Plan  
 Balance Site

Stream Designation	Project Stream Length (LF)	Restoration Approach
Nahunta Swamp	5,070	Riparian planting
UT1	550	Riparian planting
UT2	1,053	Riparian planting
UT3	1,339	Riparian planting
UT4	591	Riparian planting
UT5	1,077	Riparian planting
UT6	47	Riparian planting
UT7	402	Riparian planting
UT8	814	Riparian planting
UT9	107	Riparian planting
UT10	410	Riparian planting
UT11	366	Riparian planting

## 1.4 Construction

Prior land use and clearing had already removed the majority of the native floodplain vegetative communities along Nahunta Swamp and within the associated floodplain. However, prior to plant community restoration, remaining invasive vegetation such as privet (*Ligustrum sinense*), which existed in small quantities along the stream banks, was cleared by bush-hogging, mowing and cutting with a bush axe and saws. Cleared areas were then disked to further prepare the soil for planting. Care was taken to avoid exposure of surficial soils.

Bare-root seedlings of tree species were planted at a density of 680 stems per acre on 8-foot centers for buffer restoration areas. To ensure meeting vegetation success criteria, enhancement areas were also planted at 680 stems per acre. Table 3 depicts the total number of stems and percent of species planted. Planting was performed in February 2006 to allow plants to stabilize during the dormant period and establish root systems during the spring season. A total number of 36,950 tree seedlings were planted during restoration activities. One substitution from the proposed species took place because Hackberry (*Celtis laevigata*) seedlings were not available. Overcup Oak (*Quercus lyrata*) was planted as a substitute. This species is appropriate for the locale, site conditions, and target community. Overcup Oak comprised 10 percent of the overall planting. This further necessitated a reduction in laurel oak (*Quercus laurifolia*) from the originally proposed 10 percent composition to a 5 percent composition.

Certain opportunistic species that may dominate the early successional forests within bottomland hardwood forests have been excluded from riparian buffer restoration efforts with the anticipation that natural regeneration will occur from existing local species. Opportunistic species consist primarily of red maple (*Acer rubrum*), box elder (*Acer negundo*), and sweet-gum (*Liquidambar styraciflua*).



<b>Table 3.</b>			
<b>Planting Species for Ballance Buffer Restoration</b>			
<b>Scientific Name</b>	<b>Common Name</b>	<b>Percent</b>	<b>Number of Species</b>
<i>Nyssa sylvatica var biflora</i>	Swamp Black Gum	15%	5,550
<i>Quercus phellos</i>	Willow oak	10%	3,700
<i>Morus rubra</i>	Red mulberry	5%	1,850
<i>Platanus occidentalis</i>	Sycamore	15%	5,550
<i>Quercus laurifloia</i>	Laurel oak	5%	1,850
<i>Quercus michauxii</i>	Swamp Chestnut oak	5%	1,850
<i>Quercus falcata var. pogodifolia</i>	Cherrybark oak	5%	1,850
<i>Quercus lyrata</i>	Overcup oak	10%	3,700
<i>Fraxinus pennsylvanica</i>	Green Ash	20%	7,350
<i>Asimina triloba</i>	Paw Paw	10%	3,700
<b>TOTAL</b>		<b>100%</b>	<b>36,950</b>
<b>Notes:</b> 1. Planting density for restoration, as well as enhancement, was 680 trees per acre.			

## 2.0 MONITORING RESULTS – YEAR 2 (2007) DATA

The five-year monitoring plan for the Ballance site includes criteria to evaluate the success of the vegetation components of the project. The specific locations of vegetation plots are shown on the As-built drawing sheets included in Appendix 1. Photo points are located at each of the vegetation plots. Site photographs are included in Appendix 2.

### 2.1 Vegetation

The success of this buffer restoration project is dependent upon active planting of preferred canopy species and volunteer regeneration of the native plant community. In order to determine if the success criteria have been met, vegetation monitoring quadrants were installed across the restoration site, as directed by North Carolina Ecosystem Enhancement Program (NCEEP) monitoring guidance. Six vegetation monitoring plots were installed on the site. The number of quadrants required was based on the species/area curve method, as per NCEEP guidelines. The sizes of individual quadrants are 100 square meters for woody tree species and 1 square meter for herbaceous vegetation. No plots were established for shrubs since all planted species were considered tree species. At the end of the growing season, species composition, density, and survival are evaluated each year.

The density within each of the vegetation monitoring plots for Year 2 is given in Table 4. The average density of planted bare root stems, based on the data from the six monitoring plots, is 560 stems per acre. The average density of bare root stems for monitoring Year 2 is 506 stems per acre. The locations of the vegetation plots are shown on the as-built plan sheets.

Sampling Plot No.	Counted Stems per Plot			Stems per Acre (extrapolated)		
	Initial	Year 1	Year 2	Initial	Year 1	Year 2
1	13	13	13	526	526	526
2	16	15	15	640	607	607
3	15	11	11	600	445	445
4	13	10	7	520	405	283
5	16	16	15	640	647	607
6	11	10	10	440	405	405

### 2.2 Areas of Concern

Maintenance requirements vary from site to site and are generally driven by the following conditions:

- Trees planted during wet weather may have difficulty rooting
- Extreme hot, cold, wet, or dry weather during and after construction can limit vegetation growth, particularly temporary and permanent seed
- The presence and aggressiveness of invasive species can affect the extent to which a native buffer can be established
- The larvae of herbivorous insects can destroy the trees; so infestations can be extremely damaging.

One monitoring plot had a lower than expected survivability rate for Year 2. The density for Plot 4 was 283 stems per acre. This plot will be monitored closely during the 2008 growing season to determine if some trees which were recorded as dead were actually green at the base and will re-sprout. The prevalence of volunteer species will also be assessed to determine if natural recolonization is compensating for lower planted stem densities.

In the future privet may become a concern due to its former presence along lengths of stream channel adjacent to the restoration areas. Rivercane and morning glory may also prove problematic as they may hinder growth of some of the trees due to competition. These potential concerns will be monitored as the project progresses and matures.

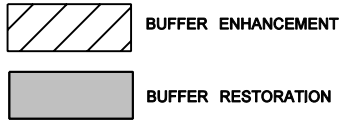
# **APPENDIX 1**

## **AS-BUILT PLAN SHEETS**

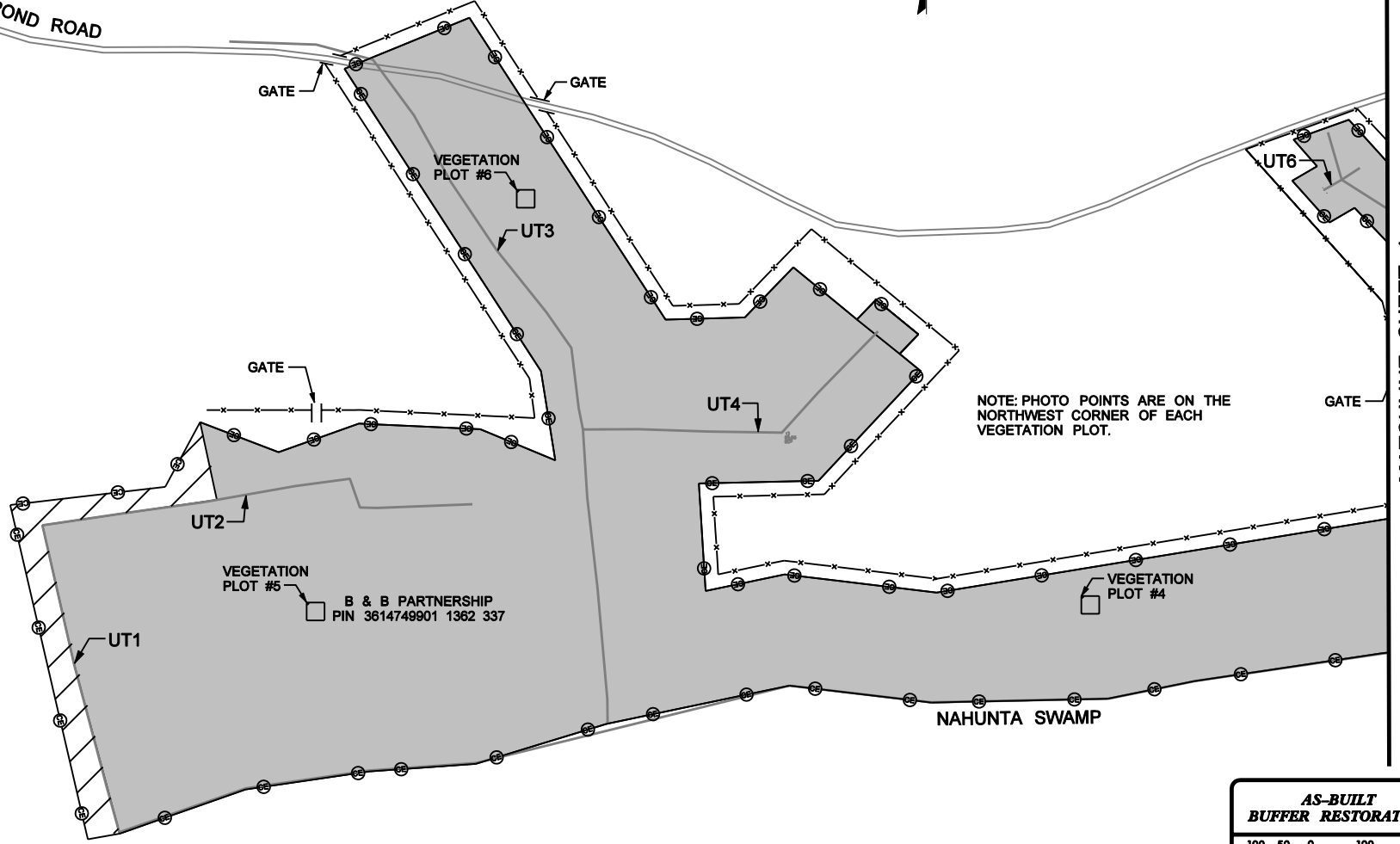
THIS DOCUMENT  
ORIGINALLY ISSUED AND  
SEALED BY:

KEVIN L. THEEDY  
027337  
MARCH 3, 2008

THIS MEDIA SHALL NOT BE CONSIDERED  
A CERTIFIED DOCUMENT



TO BENTON POND ROAD

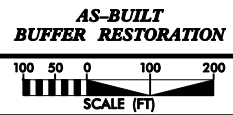


B & B PARTNERSHIP  
PIN 3614749901 1362 337

NOTE: PHOTO POINTS ARE ON THE  
NORTHWEST CORNER OF EACH  
VEGETATION PLOT.

NAHUNTA SWAMP

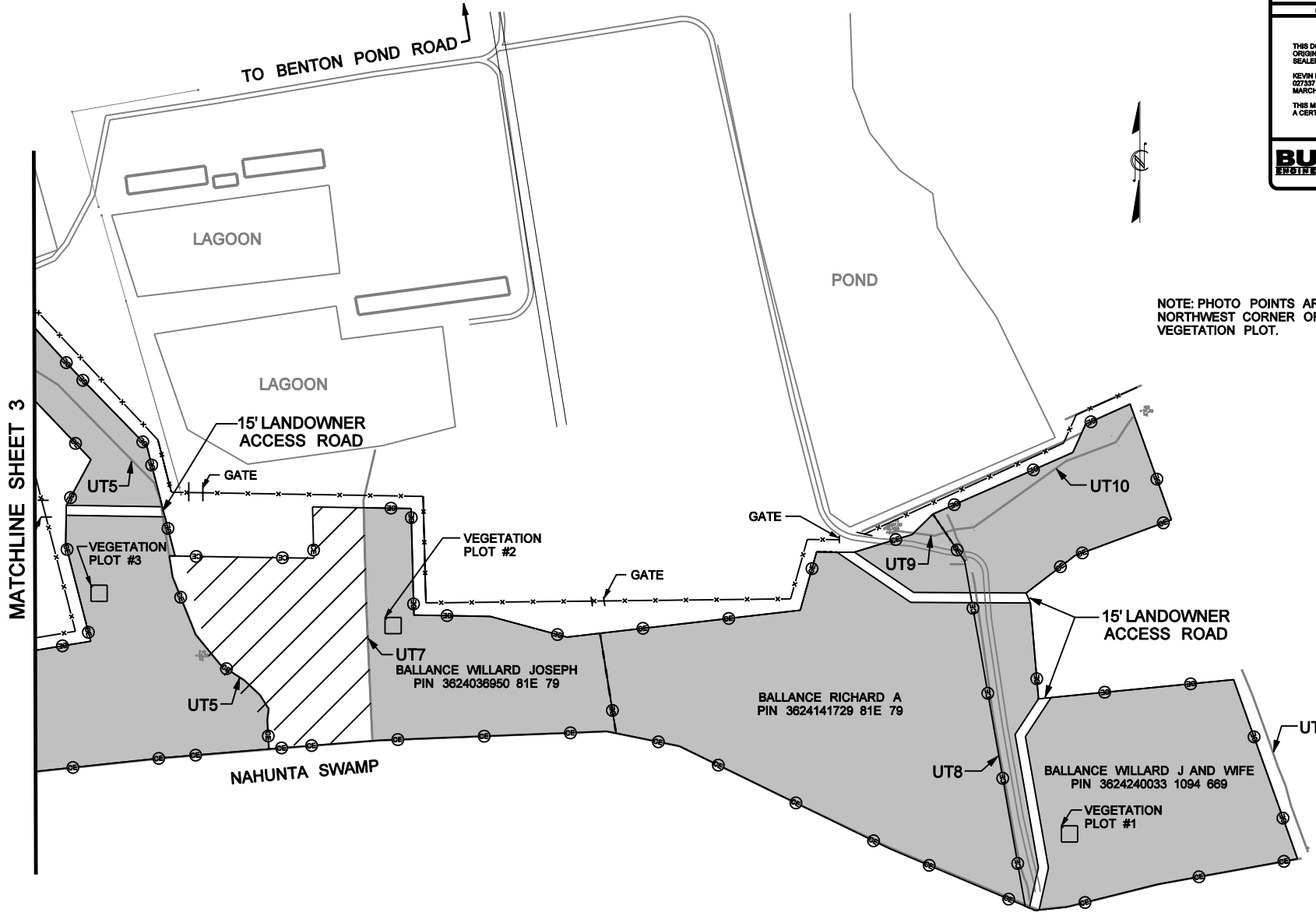
MATCHLINE SHEET 4



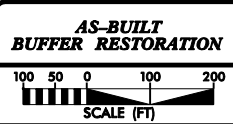
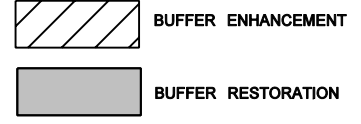
2/26/08  
I:\3\02\007  
1\02\02\007\Design\As-Built\B3BR.Bol.esb.psh.03.dgn

THIS DOCUMENT  
 ORIGINALLY ISSUED AND  
 SEALED BY:  
 KEVIN L. TWEEDY  
 022337  
 MARCH 3, 2008  
 THIS MEDIA SHALL NOT BE CONSIDERED  
 A CERTIFIED DOCUMENT

NOTE: PHOTO POINTS ARE ON THE  
 NORTHWEST CORNER OF EACH  
 VEGETATION PLOT.



MATCHLINE SHEET 3



I:\2008\02088\Design\As-Built\02088R\_Bal\_L.esb.psh.dwg  
 2/26/08

THIS DOCUMENT  
ORIGINALLY ISSUED AND  
SEALED BY:

KEVIN L. TWEEDY  
027037  
MARCH 3, 2008

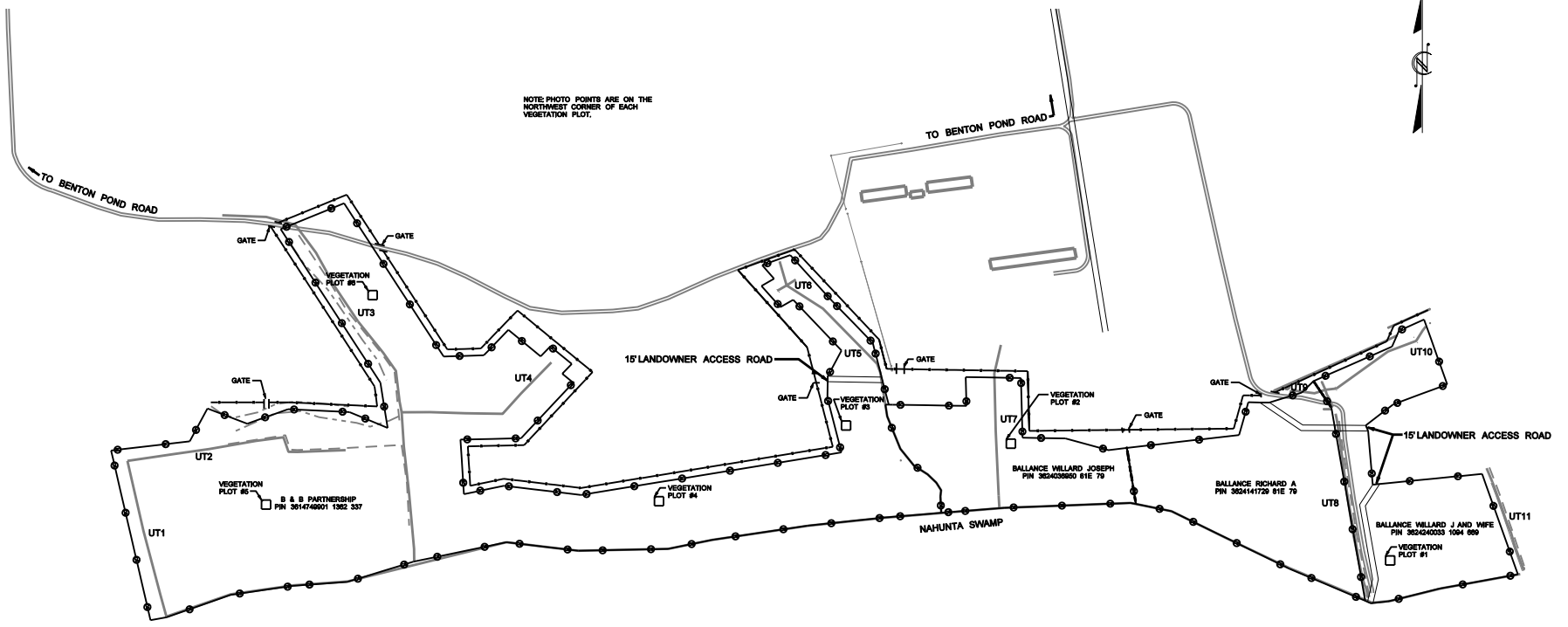
THIS MEDIA SHALL NOT BE CONSIDERED  
A CERTIFIED DOCUMENT



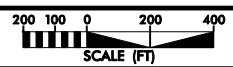
8000 Regency Parkway Suite 200  
Cary, North Carolina 27511  
Phone: 919-453-5488  
Fax: 919-453-4460



NOTE PHOTO POINTS ARE ON THE  
NORTHWEST CORNER OF EACH  
VEGETATION PLOT.



**AS-BUILT  
SITE OVERVIEW  
AND FENCING**



I:\2008\07  
 2/26/08  
 13:36:28\design\as-built\B38BR.Bol.esb.psh.dfs.dgn

# **APPENDIX 2**

# **PHOTO LOG**





1. Veg Plot 1 Herbaceous Plot.



2. Veg Plot 1 NW Looking SE.



3. Veg Plot 2 Herbaceous Plot.



4. Veg Plot 2 NW Looking SE.



5. Veg Plot 3 Herbaceous Plot.



6. Veg Plot 3 NW Looking SE.



7. Veg Plot 4 Herbaceous Plot.



8. Veg Plot 4 NW Looking SE.



9. Veg Plot 5 Herbaceous Plot.



10. Veg Plot 5 NW Looking SE.



11. Veg Plot 6 Herbaceous Plot.



12. Veg Plot 6 NW Looking SE.