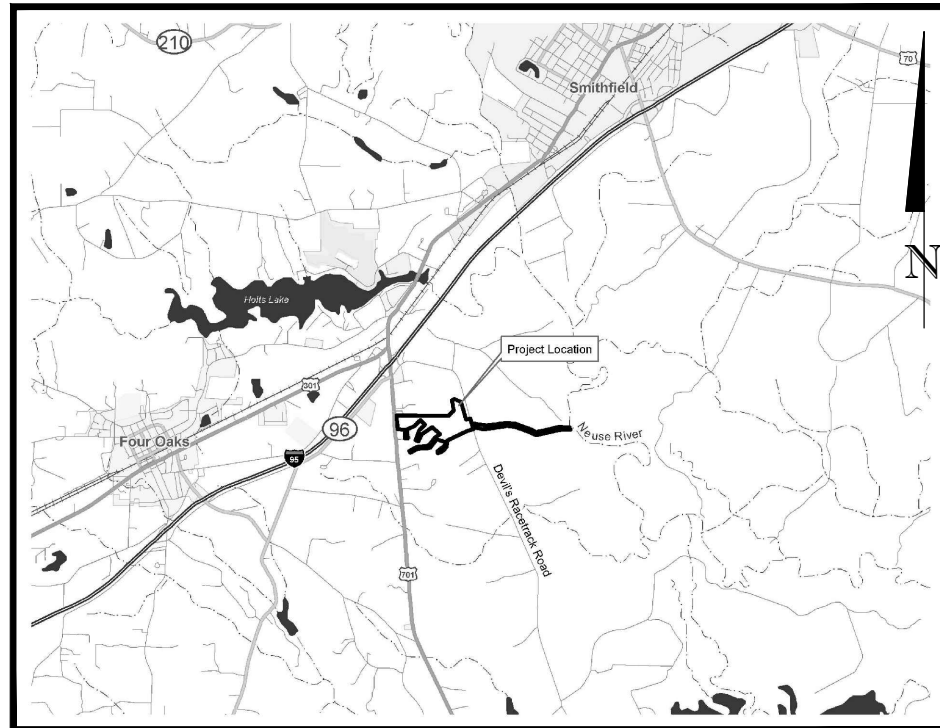


# Devil's Racetrack Mitigation Site

## Johnston County, NC

### for

## North Carolina Ecosystem Enhancement Program



Vicinity Map  
Not to Scale



**BEFORE YOU DIG  
CALL 1-800-632-4949  
N.C. ONE-CALL CENTER  
IT'S THE LAW!**

**BASE LINE DRAWINGS  
ISSUED MAY 2, 2014**

**Site Directions:**

From I-95 exit 90 (HWY 701) take Devil's Racetrack Road east approximately 1.2 miles. The temporary construction entrances will be located on both sides of the road.



### Sheet Index

Title Sheet	0.1
Legend	0.2
Stream Overview	1.0
Base Line Plans	1.1-1.18

### Project Directory

**Surveying:**  
Turner Land Surveying, PLLC  
3201 Glenridge Drive  
Raleigh, NC 27604  
David S. Turner, PLS  
919-875-1378

**Owner:**  
Ecosystem Enhancement Program  
1652 Mail Service Center  
Raleigh, NC 27699-1652  
Jeff Jurek  
919-715-1157

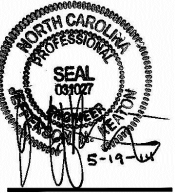
Stewart Proctor Engineering and Surveying, PLLC  
322 Chapanoke Road, Suite 100  
Raleigh, NC 27603  
Herbert Proctor Jr., PLS  
919-799-1855

DENR Contract No. 003989  
EEP ID No. 95021

Disturbed Area = 107 Acres

**Engineering:**  
Wildlands Engineering, Inc  
License No. F-0831  
5605 Chapel Hill Road, Suite 122  
Raleigh, NC 27607  
Jeff Keaton, PE  
919-851-9986

**WILDLANDS**  
Engineering, Inc.  
1450 S. Mint Street, Ste 104  
Charlotte, NC 28203  
Tel: 704.332.7754  
Fax: 704.332.3306  
Firm License No. F-0831



Devil's Racetrack Mitigation Site  
Guilford, North Carolina

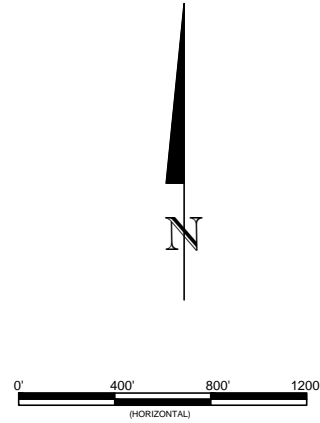
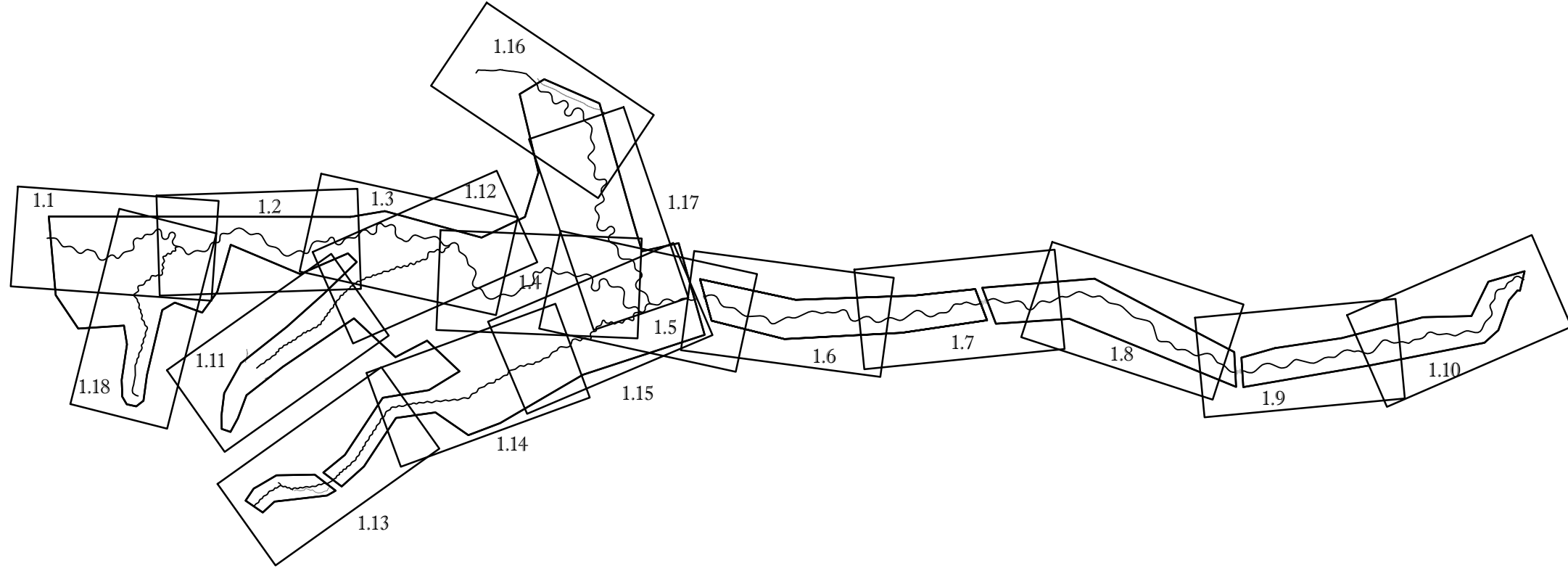
Title Sheet

Revisions:	

Date:	May 5, 2014
Job Number:	00452129
Project Engineer:	JK
Drawn By:	JCK
Checked By:	KG

**0.1**



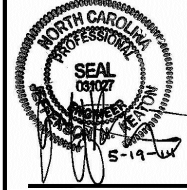


Date: May 5, 2014  
 Job Number: 005-02129  
 Project Engineer: JK  
 Drawn By: JCK  
 Checked By: KG

Revisions

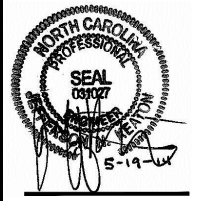
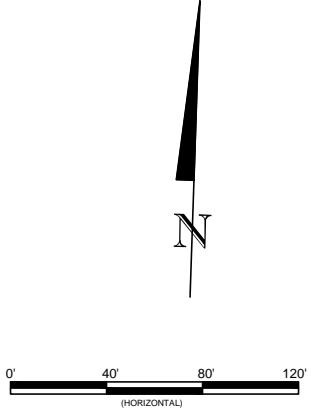
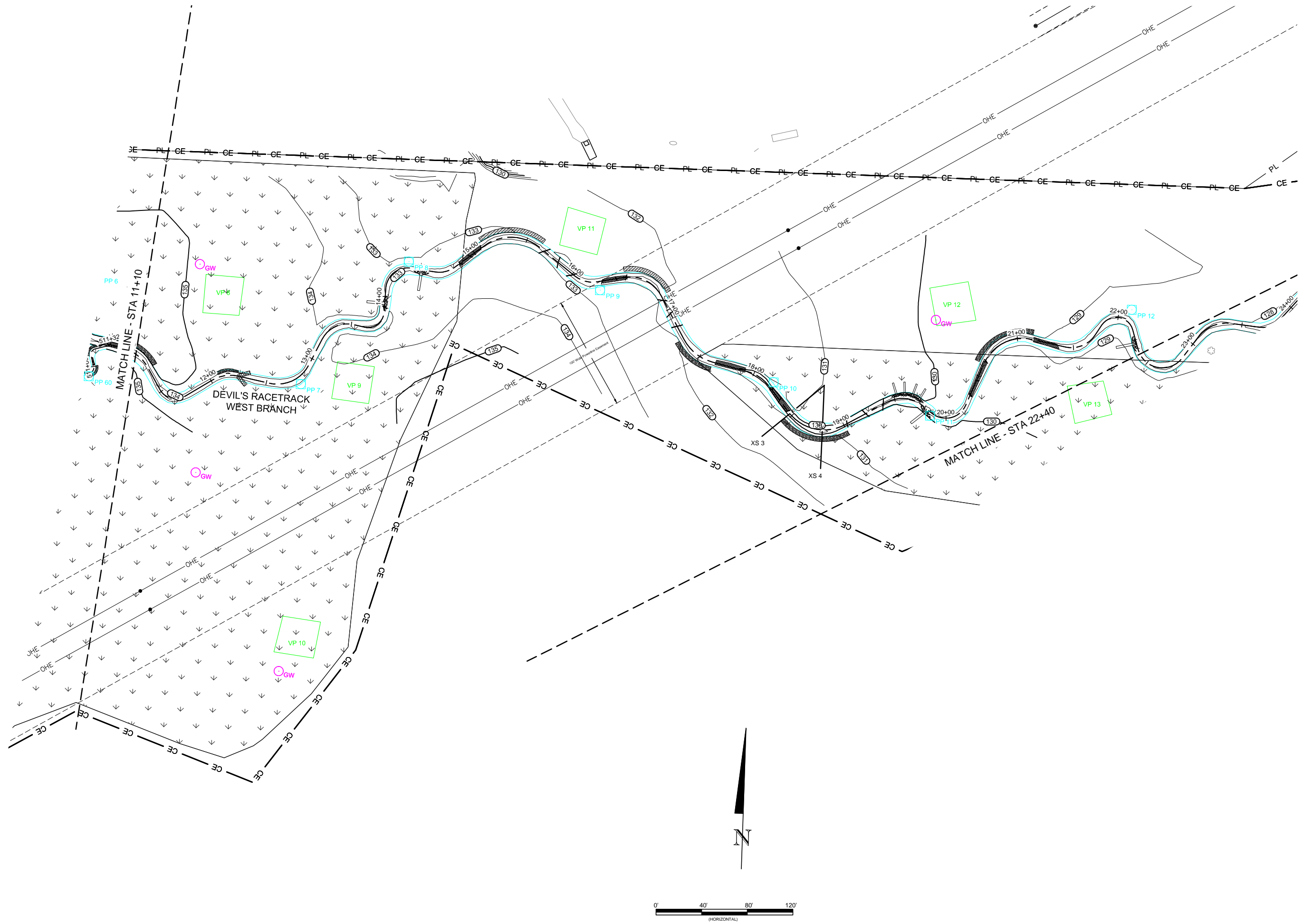

1.0

Devil's Racetrack Mitigation Site  
 Guilford, North Carolina  
 Monitoring Overview  
 Base Line Plans



**WILDLANDS**  
 ENGINEERING, INC.  
 1408 S. WILSON ST.  
 CHARLOTTE, NC 28203  
 Tel: 704.332.7754  
 Fax: 704.332.3306  
 Firm License No. F-0831





**Devil's Racetrack Mitigation Site**  
**Guilford, North Carolina**  
 Devil's Racetrack Creek West  
 Base Line Plans

Revisions:	

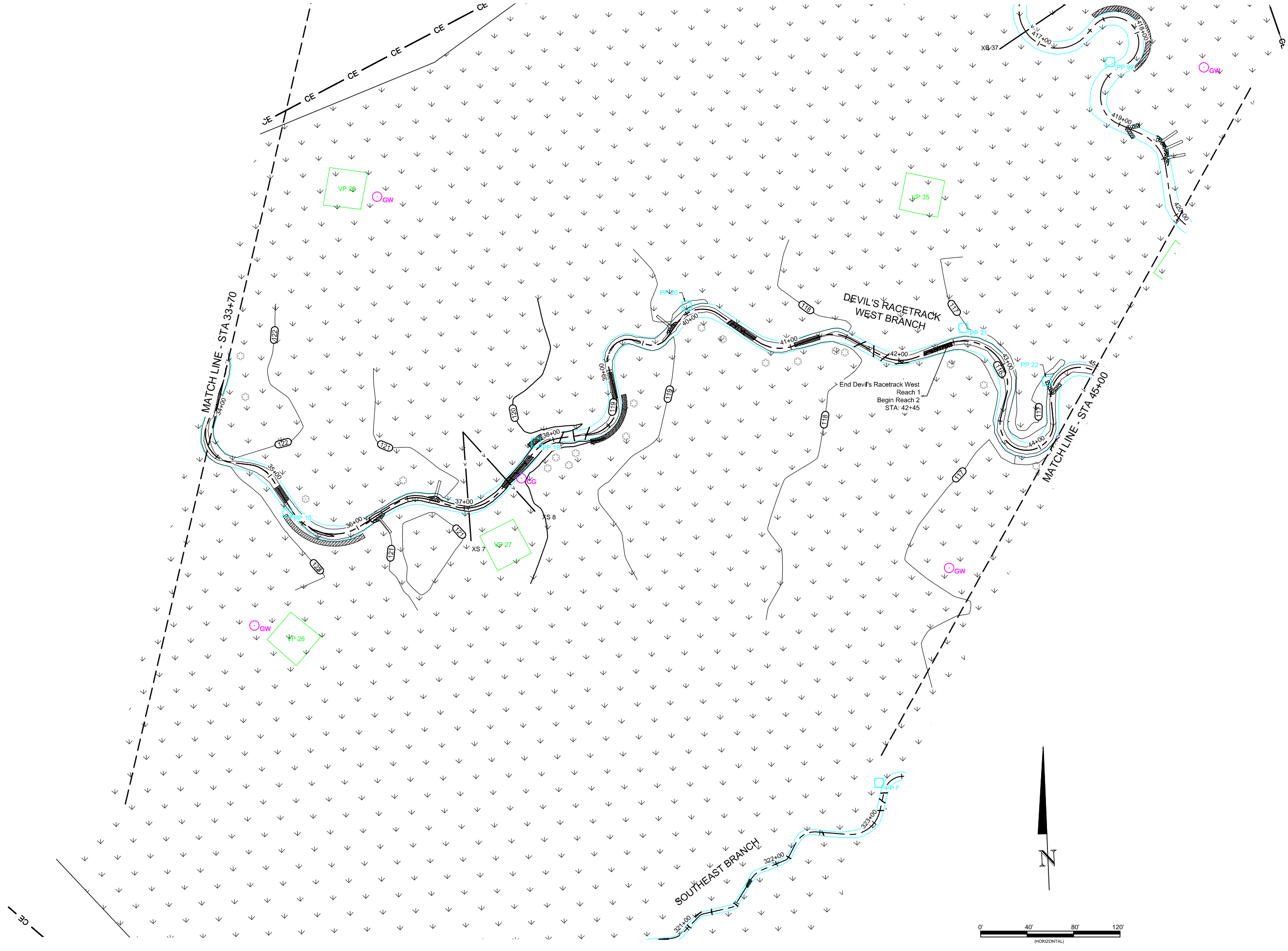
Date: May 5, 2014  
 Job Number: 05-07129  
 Project Engineer: JN  
 Drawn By: JCK  
 Checked By: KG

**1.2**





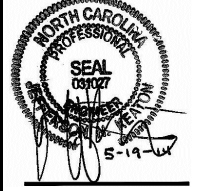
May 19, 2014  
C:\ActiveProjects\05-07129 Devil's Racetrack\Monitoring\Baseline\_Monitoring\Drawings\MON-DRC-118.dwg



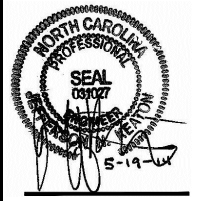
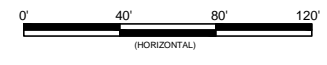
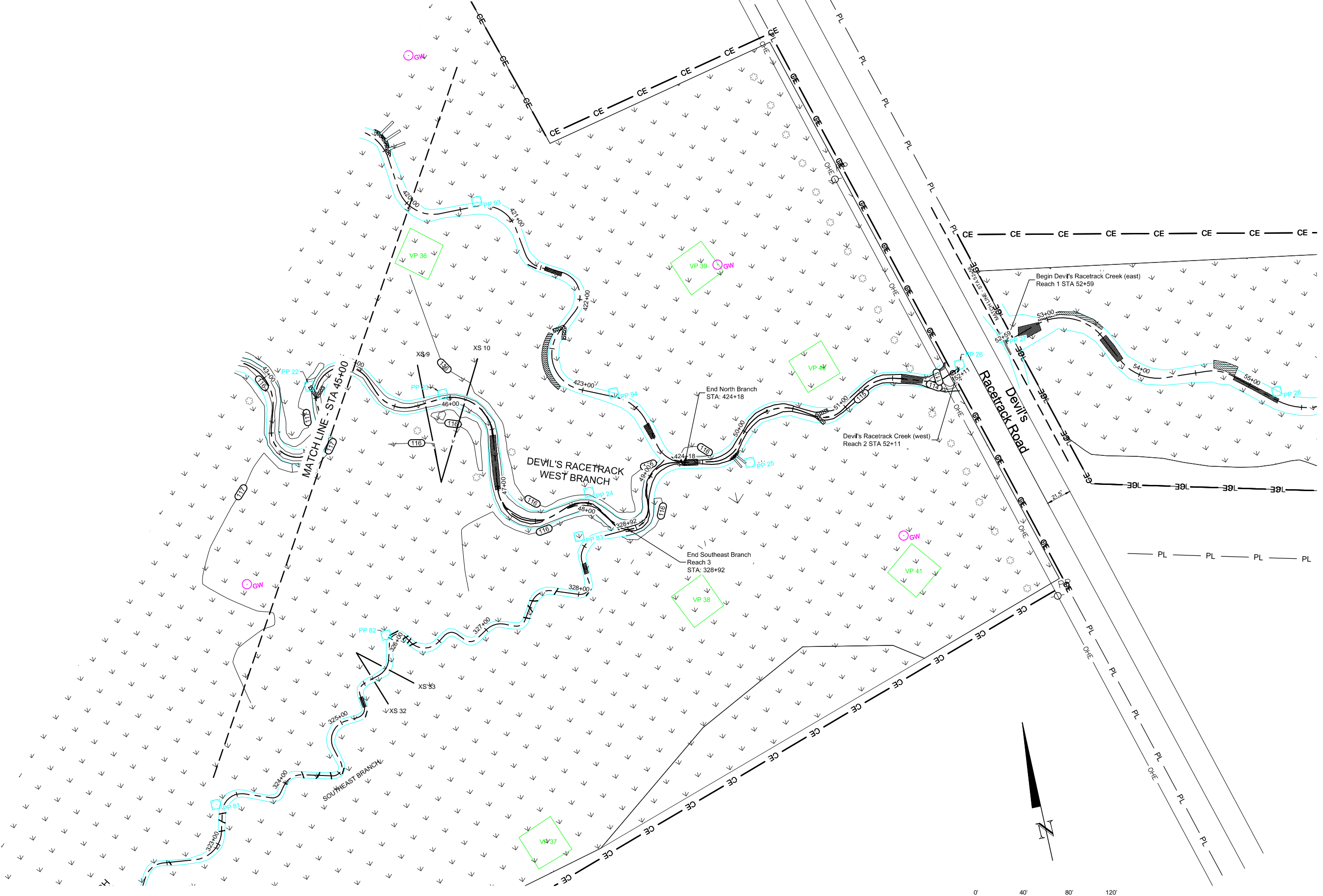
Date:	May 5, 2014
Job Number:	05-07129
Project Engineer:	JN
Drawn By:	JCK
Checked By:	KG

Revisions:	

Devil's Racetrack Mitigation Site  
Guilford, North Carolina  
Devil's Racetrack Creek West  
Base Line Plans



**WILDLANDS**  
1450 S. Mint Street, Ste 104  
Charlotte, NC 28203  
Tel: 704.332.7754  
Fax: 704.332.3306  
Firm License No. F-0831



**Devil's Racetrack Mitigation Site**  
**Guilford, North Carolina**  
 Devil's Racetrack Creek West  
 Base Line Plans

Revisions:	

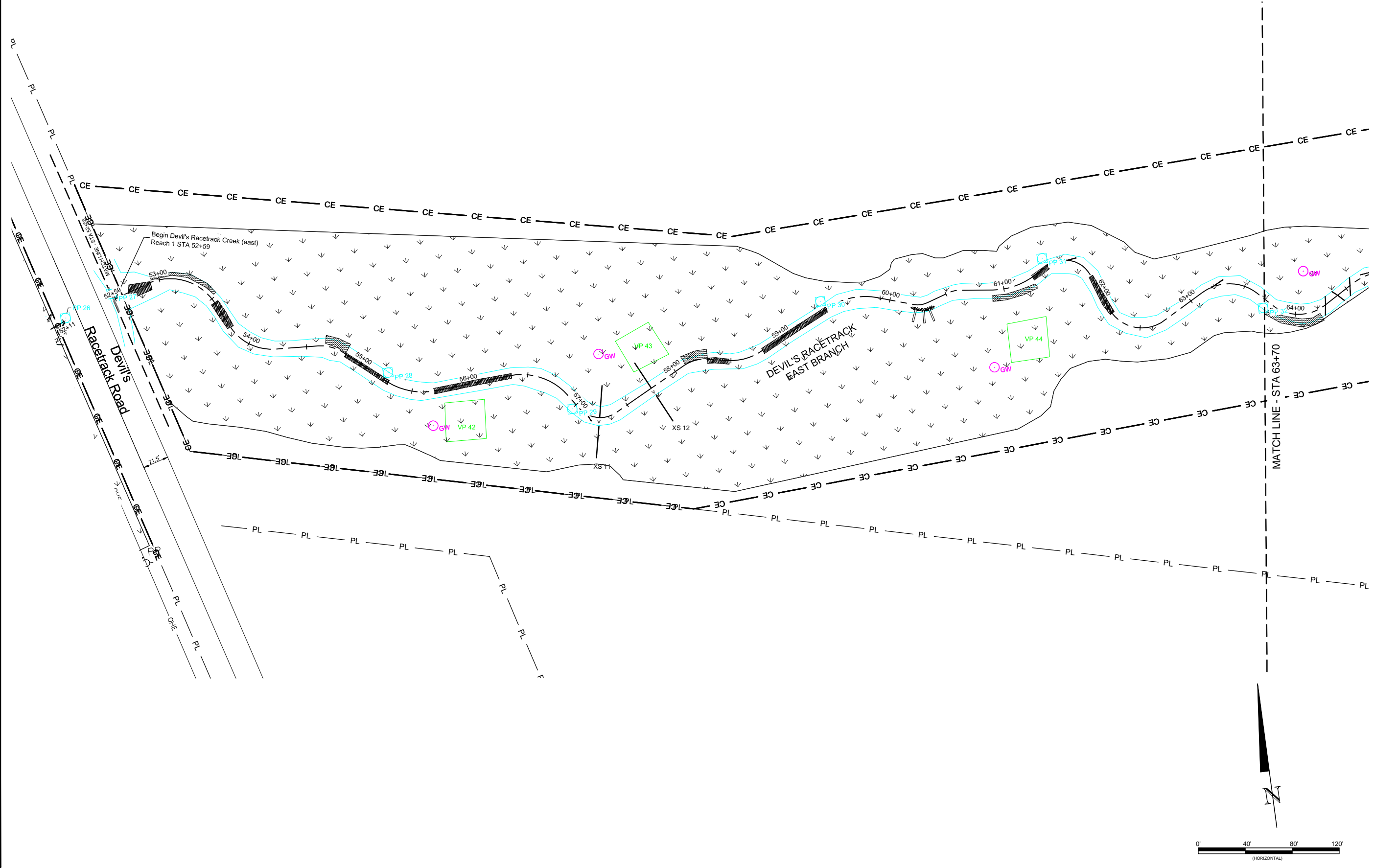
Date:	May 5, 2014
Job Number:	05-07129
Project Engineer:	JK
Drawn By:	JK
Checked By:	KG

**1.5**



May 19, 2014

C:\Users\Protein\05-07129 Draw Pls\Drawings\Monitoring\Baseline\_Monitoring\Drawings\MON-DRC-US.dwg

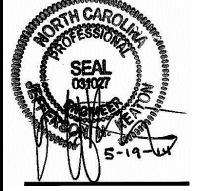


Date:	May 5, 2014
Job Number:	05-07129
Project Engineer:	JN
Drawn By:	JCK
Checked By:	KG

1.6

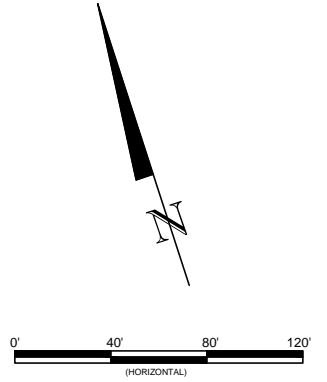
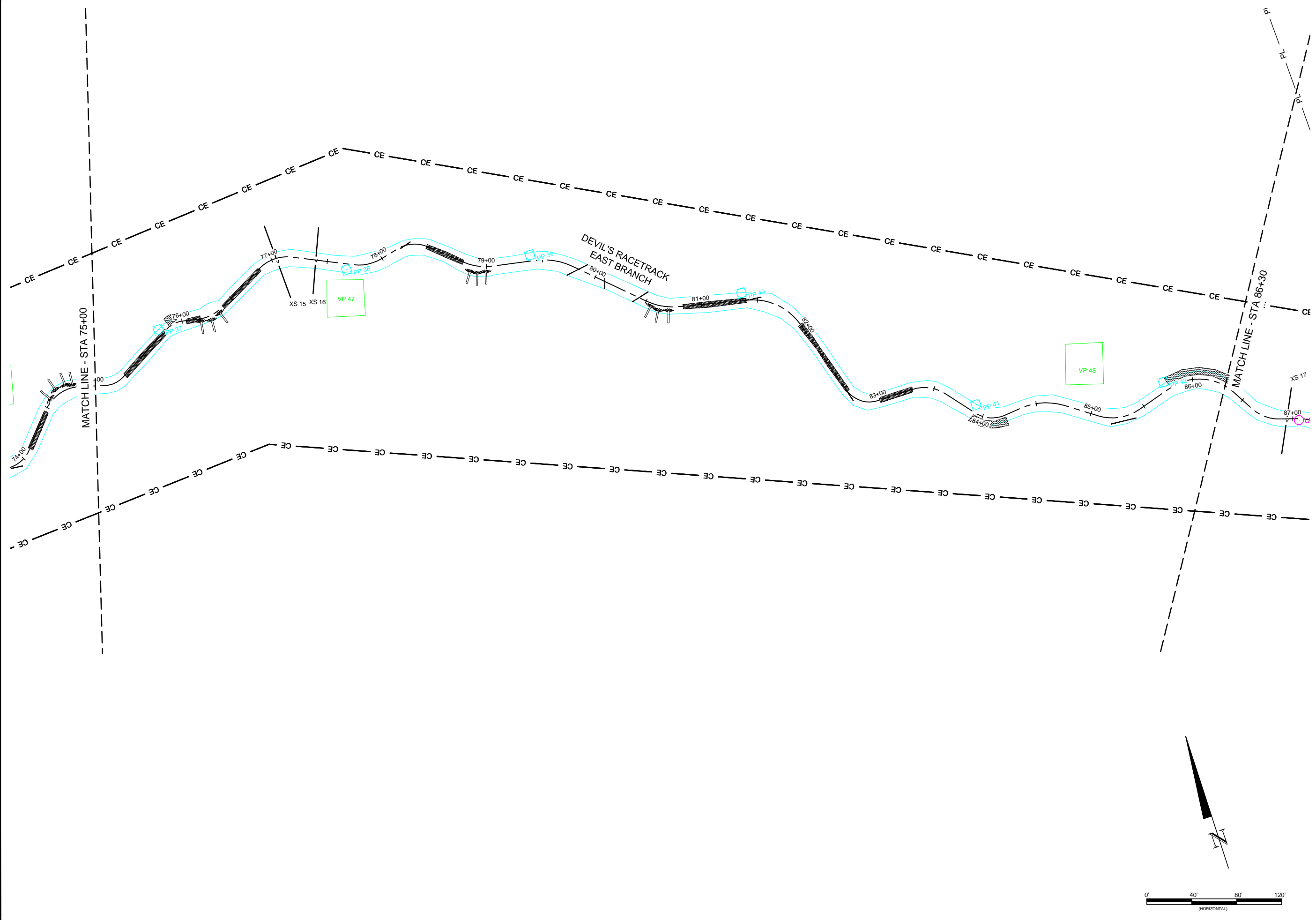
Sheet

Devil's Racetrack Mitigation Site  
Guilford, North Carolina  
Devil's Racetrack Creek East  
Base Line Plans

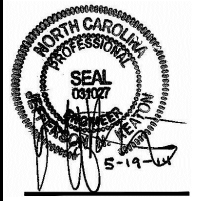


**WILDLANDS**  
1450 S. Mint Street, Ste 104  
Charlotte, NC 28203  
Tel: 704.332.7754  
Fax: 704.332.3306  
Firm License No. F-0831





**WILDLANDS**  
 CONSULTANTS  
 1450 S. Mint Street, Ste 104  
 Charlotte, NC 28203  
 Tel: 704.332.7754  
 Fax: 704.332.3306  
 Firm License No. F-0831



**Devil's Racetrack Mitigation Site**  
**Guilford, North Carolina**  
 Devil's Racetrack Creek East  
 Base Line Plans

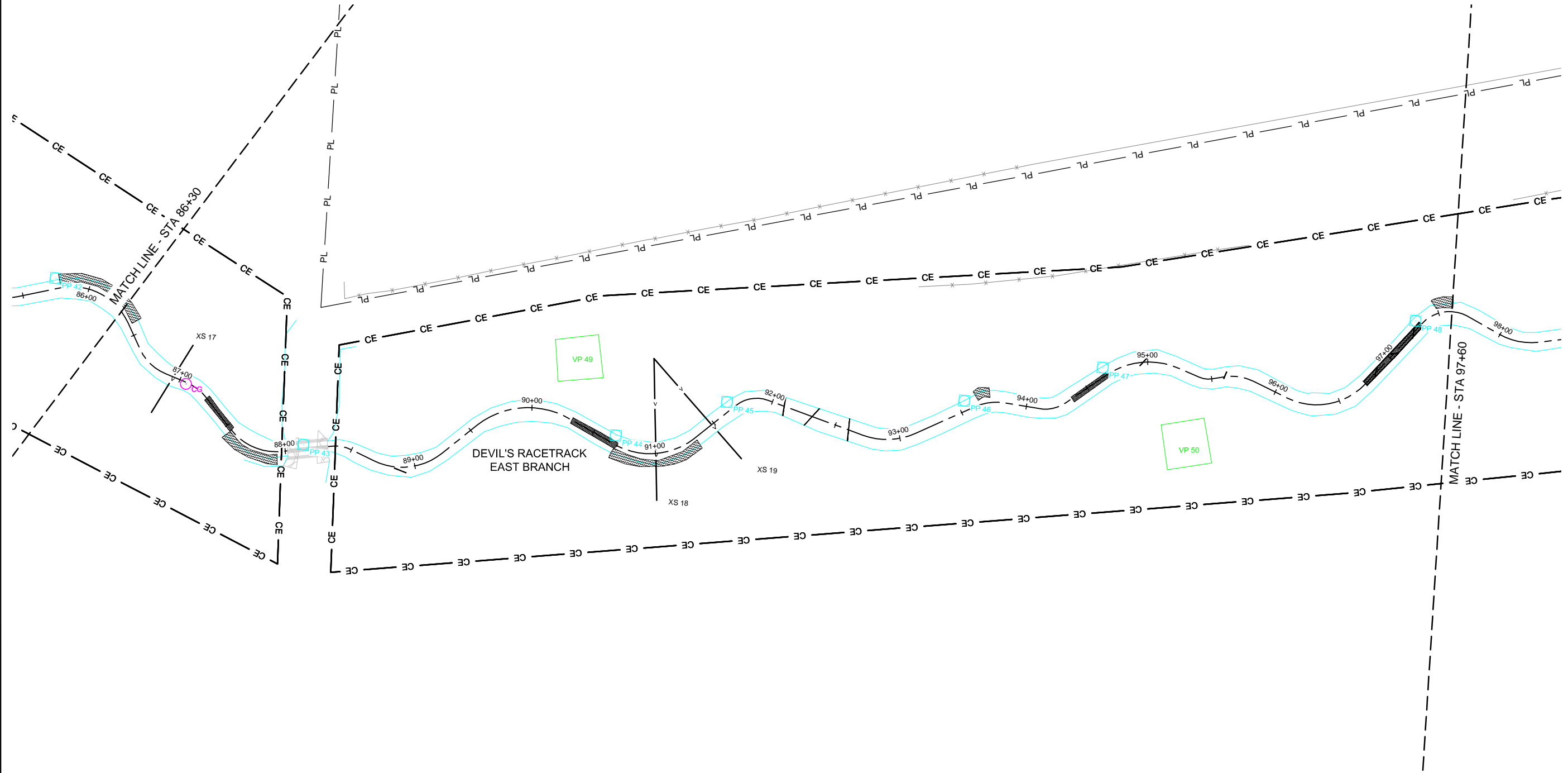
Revisions:


Date: May 5, 2014  
 Job Number: 05-07129  
 Project Engineer: JN  
 Drawn By: JCK  
 Checked By: KG

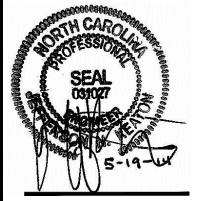
**1.8**

May 19, 2014

C:\ActiveProjects\05-07129 Dev's Racetrack\Monitoring\Baseline\_Monitoring\Drawings\25-MON-ERC-15.dwg



**WILDLANDS**  
 1450 S. Mint Street, Ste 104  
 Charlotte, NC 28203  
 Tel: 704.332.7754  
 Fax: 704.332.3306  
 Firm License No. F-0831



**Devil's Racetrack Mitigation Site**  
**Guilford, North Carolina**  
 Devil's Racetrack Creek East  
 Base Line Plans

Revisions:

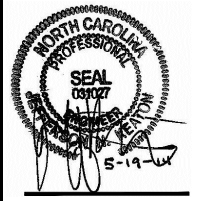
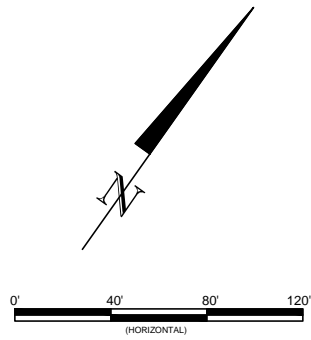
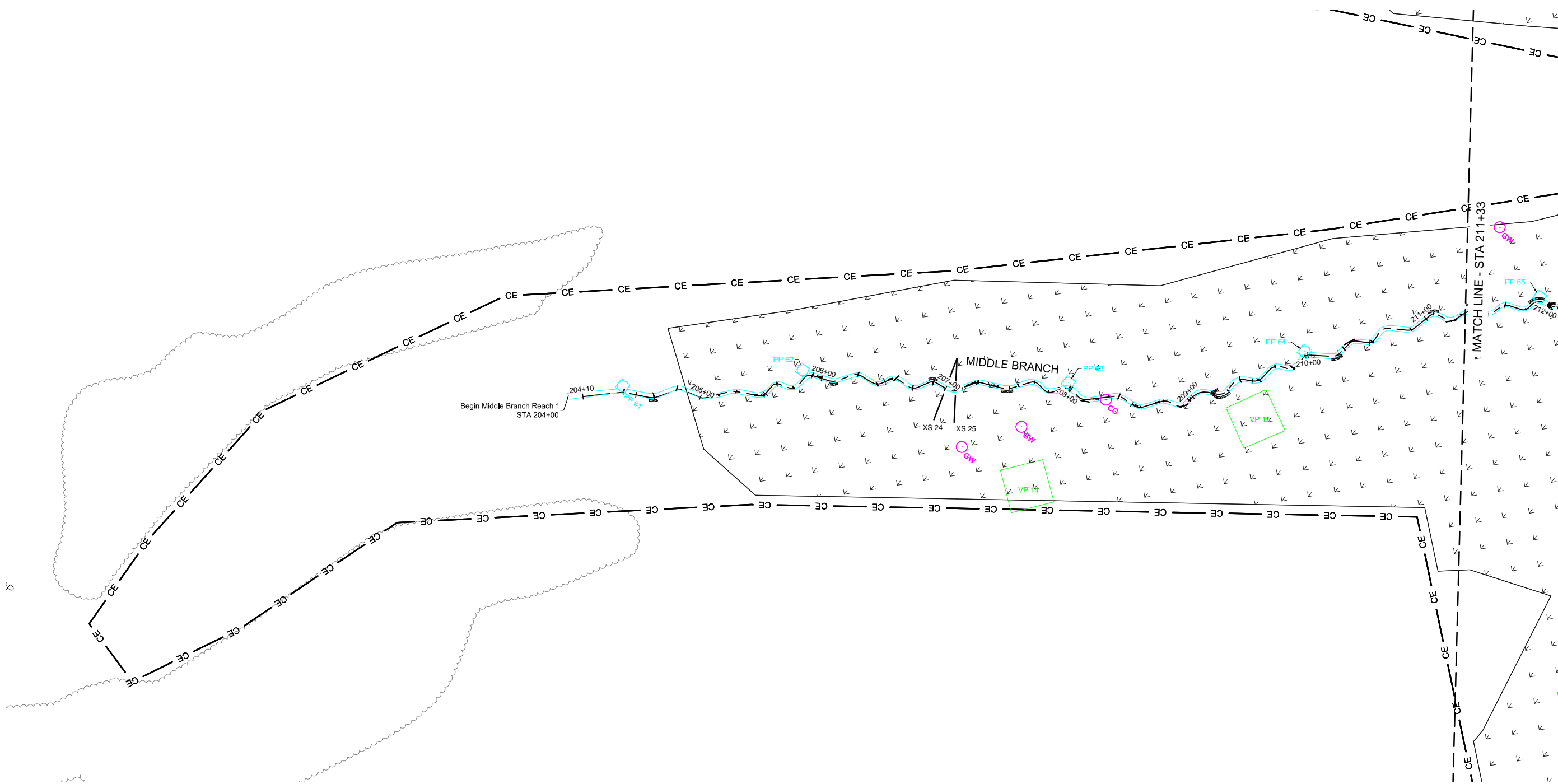

Date: May 5, 2014  
 Job Number: 05-07129  
 Project Engineer: JN  
 Drawn By: JCK  
 Checked By: KG

**1.9**

Sheet







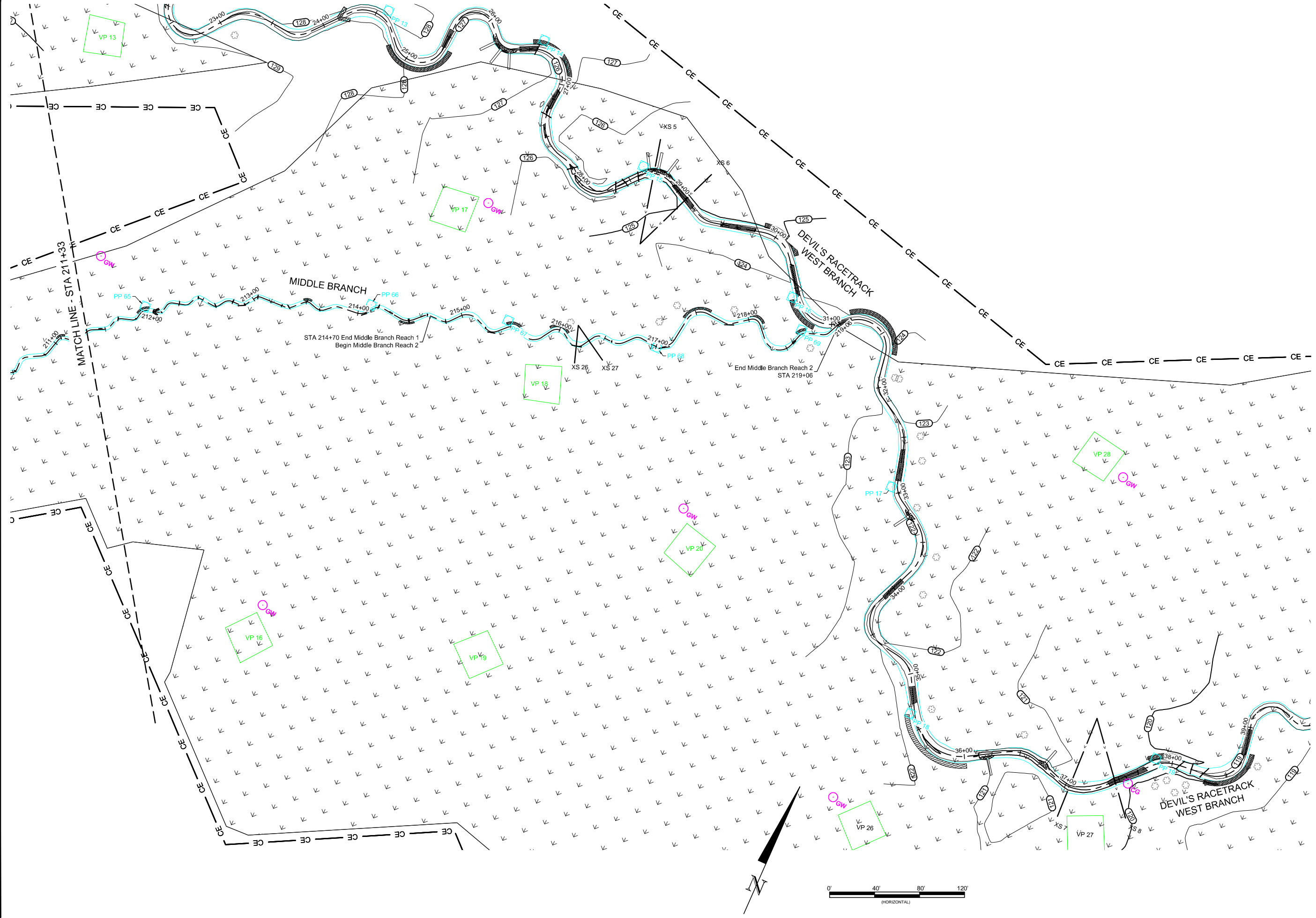
**Devil's Racetrack Mitigation Site**  
**Guilford, North Carolina**  
 Middle Branch  
 Base Line Plans

Revision	Date	By

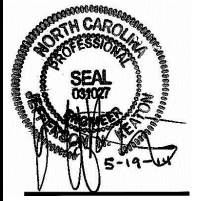
Date:	May 5, 2014
Job Number:	05-07129
Project Engineer:	JK
Drawn By:	JCK
Checked By:	KG

**1.11**

May 19, 2014  
C:\Users\pfeiler\Documents\Projects\Devil's Racetrack\Baseline\_Monitoring\Drawings\1.1.2\_MLNS\_Tributary



**WILDLANDS**  
1450 S. Mint Street, Ste 104  
Charlotte, NC 28203  
Tel: 704.332.7754  
Fax: 704.332.3306  
Firm License No. F-0831



**Devil's Racetrack Mitigation Site**  
**Guilford, North Carolina**  
Middle Branch  
Base Line Plans

Revisions:

No.	Description

Date: May 5, 2014  
Job Number: 005-02129  
Project Engineer: JN  
Drawn By: JCK  
Checked By: KG

**1.12**

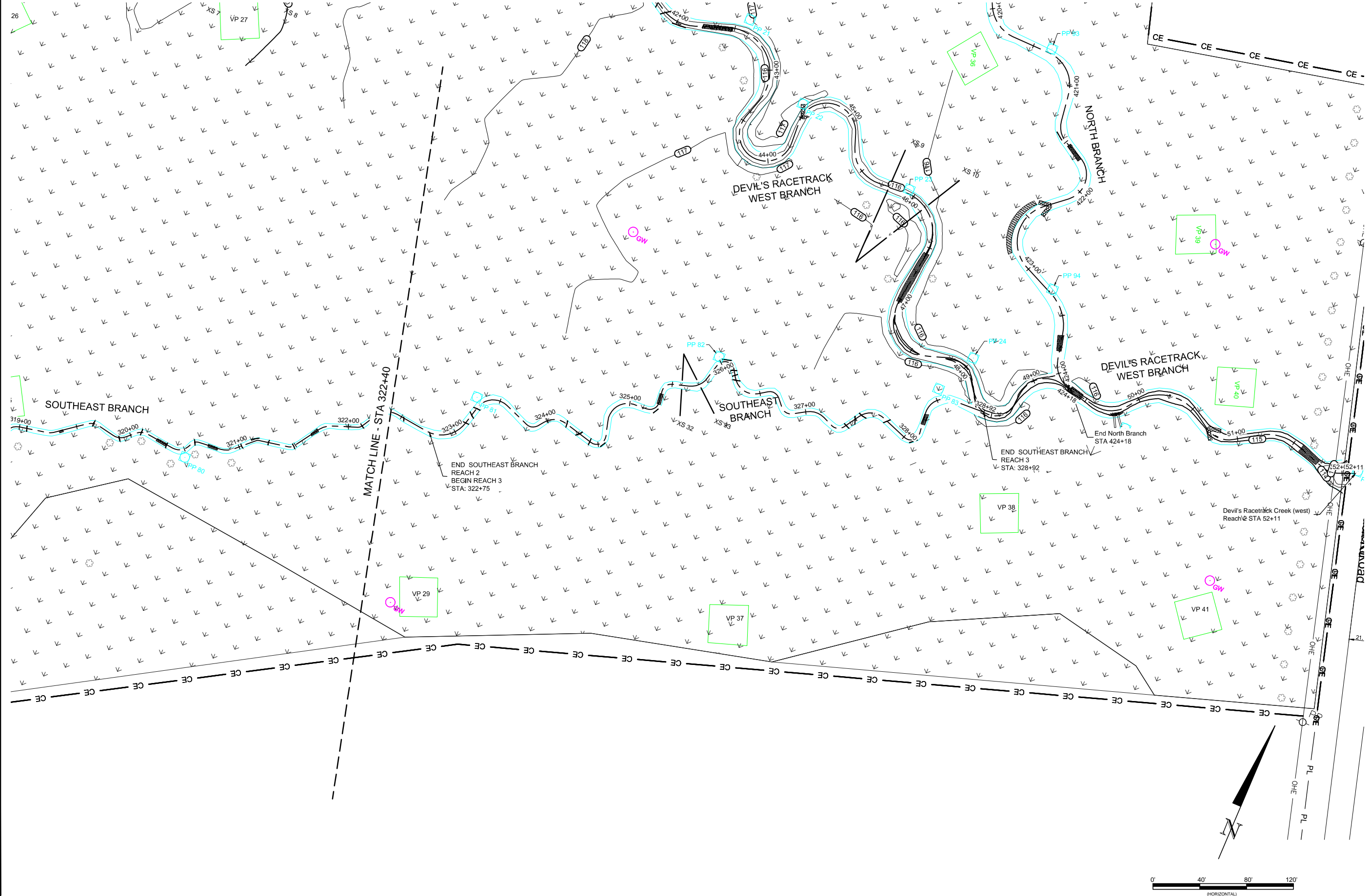
Sheet



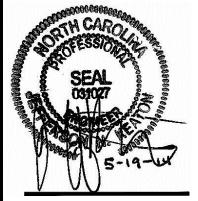




May 19, 2014  
C:\Active\Projects\05-07129\Draw\B\Bases\Bases\Baseline\_Monitoring\Draw\05-07129-MON-Bases.dwg



**WILDLANDS**  
1450 S. Mint Street, Ste 104  
Charlotte, NC 28203  
Tel: 704.332.7754  
Fax: 704.332.3306  
Firm License No. F-0831



**Devil's Racetrack Mitigation Site**  
**Guilford, North Carolina**  
Southeast Branch  
Base Line Plans

Revisions

Date: May 5, 2014  
Job Number: 05-07129  
Project Engineer: JN  
Drawn By: JCK  
Checked By: KG  
**1.15**

Sheet

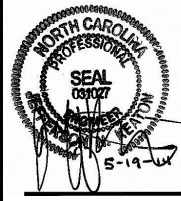




Date:	May 5, 2014
Job Number:	05-07129
Project Engineer:	JN
Drawn By:	JCK
Checked By:	KG

Revisions:	

Devil's Racetrack Mitigation Site  
 Guilford, North Carolina  
 North Branch  
 Base Line Plans



**WILDLANDS**  
 1450 S. Mint Street, Ste 104  
 Charlotte, NC 28203  
 Tel: 704.332.7754  
 Fax: 704.332.3306  
 Firm License No. F-0831



