

**FINAL
ANNUAL MONITORING REPORT
IRWIN CREEK
RESTORATION SITE
MECKLENBURG COUNTY, NORTH CAROLINA
(EEP Project Number 192)**

Monitoring Year 1 of 5 (2010)



Submitted to:
North Carolina Department of Environment and Natural Resources
Ecosystem Enhancement Program
Raleigh, North Carolina



November 2010

**FINAL
ANNUAL MONITORING REPORT
IRWIN CREEK**

**RESTORATION SITE
MECKLENBURG COUNTY, NORTH CAROLINA
(EEP Project Number 192)**

Monitoring Year 1 of 5 (2010)



Submitted to:
North Carolina Department of Environment and Natural Resources
Ecosystem Enhancement Program
Raleigh, North Carolina

Prepared by:
Axiom Environmental, Inc.
20 Enterprise Street, Suite 7
Raleigh, North Carolina 27607

Design Firm:
HDR Engineering, Inc. of the Carolinas
3733 National Drive
Raleigh, North Carolina 27612



November 2010

Table of Contents

1.0 EXECUTIVE SUMMARY	1
2.0 METHODOLOGY	1
2.1 Vegetation Assessment	2
2.2 Wetland Assessment	2
3.0 REFERENCES	3

List of Figures

Figure 1. Vicinity Map	Appendix A
Figure 2. Current Conditions Plan View	Appendix B
Figure 3. Annual Climatic Data vs. 30-year Historic Data	Appendix D

List of Tables

Table 1. Project Components and Mitigation Credits	Appendix A
Table 2. Project Activity and Reporting History	Appendix A
Table 3. Project Contacts Table	Appendix A
Table 4. Project Baseline Information and Attributes	Appendix A
Table 5. Vegetation Condition Assessment Table	Appendix B
Table 6. Vegetation Plot Criteria Attainment	Appendix C
Table 7. CVS Vegetation Plot Metadata	Appendix C
Table 8. Total and Planted Stems by Plot and Species	Appendix C
Table 9. Verification of Bankfull Events	Appendix E
Table 10. Wetland Hydrology Criteria Attainment Summary	Appendix E

Appendices

APPENDIX A. PROJECT VICINITY MAP AND BACKGROUND TABLES

- Figure 1. Vicinity Map
- Table 1. Project Components and Mitigation Credits
- Table 2. Project Activity and Reporting History
- Table 3. Project Contacts Table
- Table 4. Project Baseline Information and Attributes

APPENDIX B. VISUAL ASSESSMENT DATA

- Figure 2. Current Conditions Plan View
- Table 5. Vegetation Condition Assessment Table
- Vegetation Monitoring Plot Photos

APPENDIX C. VEGETATION PLOT DATA

- Table 6. Vegetation Plot Criteria Attainment
- Table 7. CVS Vegetation Plot Metadata
- Table 8. Total and Planted Stems by Plot and Species

APPENDIX D. STREAM SURVEY DATA

- Fixed-Station Photos

APPENDIX E. HYDROLOGY DATA

- Table 9. Verification of Bankfull Events
- Figure 3. Annual Climatic Data vs. 30-year Historic Data
- 2010 (Year 1) Groundwater Gauge Graphs
- Table 10. Wetland Hydrology Criteria Attainment Summary

1.0 EXECUTIVE SUMMARY

The North Carolina Ecosystem Enhancement Program (NCEEP) has completed level II stream enhancement and wetland creation at the Irwin Creek Restoration Site (hereafter referred to as the “Site”) to assist in fulfilling stream and wetland mitigation goals in the area. The Site is located on the western side of the City of Charlotte, approximately 2 miles southeast of the Charlotte Douglas International Airport, in Mecklenburg County. The Site is located in United States Geological Survey Hydrologic Unit 03050103020020 (North Carolina Division of Water Quality [NCDWQ] Subbasin 03-08-34) of the Catawba River Basin and will service USGS 8-digit Cataloging Unit (CU) 03050103. This report (compiled based on EEP’s *Procedural Guidance and Content Requirements for EEP Monitoring Reports* Version 1.3 dated 1/15/10) summarizes data for year 1 (2010) monitoring.

The Site is located in a NCEEP Targeted Local Watershed within the Sugar Creek watershed; this watershed in conjunction with the Little Sugar, McMullen, and McAlpine Creek watersheds in CU 03050103 drain point and nonpoint sources of pollution from the metropolitan center of Charlotte severely impacting aquatic health of the watershed. The waters are listed as impaired for elevated levels of fecal coliform bacteria and turbidity; the main goal in this CU is to provide better stormwater management (NCEEP 2007).

Prior to construction, the Site was located within a FEMA buyout area where several homes were demolished and removed. Surrounding land uses include commercial and residential areas with narrow riparian corridors adjacent to streams; greater than 85-90 percent of the contributing watershed having been cleared and developed.

The goals and objectives of this project focus on improving local water quality, habitat, and stream stability. The project approach was designed to provide restoration-oriented improvements to maximize environmental benefits while working within Site constraints, technical guidelines, and availability of funds. These goals were accomplished by the following.

1. Creating a floodplain bench including off-line wetlands to reduce the amount of sediment entering the stream by acting as a repository for soils suspended in the water column during high flow events, providing water storage to further allow sediment to settle out, and slow recharge of stormwater into the groundwater subsurface network.
2. Enhancing vegetation to provide habitat/food sources, shade the stream, filter overland runoff, and remove soil particles and other nutrients from stormwater.
3. Protecting a Site identified in a watershed that is listed as impaired for elevated levels of fecal coliform bacteria and turbidity (NCEEP 2007).

This project was constructed between the spring and early winter of 2009. The project consisted of enhancement (level II) of 980 linear feet of stream by laying back stream banks, excavating an extensive 90- to 100-foot wide floodplain bench along the entire project stream length, creating 0.5 acres of wetlands within the floodplain bench, and planting with native forest species. Several structures were left at the downstream end of the Site rather than removing them to avoid disturbance to the wetland area and stream banks. In addition, it was verified by HDR Engineering that the structures will not cause an issues with FEMA and may provide aquatic habitat and grade control. Site activities provide 653 Stream Mitigation Units and 0.17 riparian riverine Wetland Mitigation Units. The Site will be protected by a permanent conservation easement held by the State of North Carolina.

Success criteria for stream enhancement will include 1) success of riparian vegetation and 2) documentation of two bankfull channel events. Three bankfull events were documented to occur during the year 1 (2010) monitoring season.

Vegetation success criteria dictate that an average density of 320 stems per acre must be surviving in the first three monitoring years. Subsequently, 290 stems per acre must be surviving in year 4 and 260 stems per acre in year 5. Stem counts will be based on an average of the evaluated vegetation plots. Based on the number of stems counted, average densities were measured at 502 stems per acre surviving in year 1 (2010). The dominant species identified at the Site were planted stems of red chokeberry (*Aronia arbutifolia*), river birch (*Betula nigra*), and green ash (*Fraxinus pennsylvanica*). In addition, each individual vegetation plot met success criteria when counting planted stems alone with the exception of plot 4, which was one stem short. When including a naturally recruited stem this plot was above success criteria with 324 stems per acre. In general herbaceous vegetation within the Site has been slow to establish, planted ball and burlap trees appear to be in poor health, and many of the planted trees died over the summer as the result of dry conditions. These issues encompass the majority of the Site and should be monitored closely in subsequent monitoring years.

Success criteria for wetland groundwater hydrology at the Site require inundation or saturation within 12 inches of the ground surface for a consecutive period of 10 percent of the growing season or greater than 23 consecutive days (the growing season in Mecklenburg County begins March 22 and ends November 11 [233 days]). Groundwater hydrology was not successful for either of the groundwater gauges for the year 1 (2010) growing season. Gauge data presented in this document extends to September 23, 2010; gauge data will continue to be collected through the remainder of the growing season and will be available upon request.

Summary information and data related to the occurrence of items such as beaver or encroachment and statistics related to performance of various project and monitoring elements can be found in tables and figures within this report's appendices. Narrative background and supporting information formerly found in these reports can be found in the mitigation and restoration plan documents available on EEPs website. All raw data supporting the tables and figures in the appendices is available from EEP upon request.

2.0 METHODOLOGY

2.1 Vegetation Assessment

Five vegetation plots were established and marked after construction with four foot metal U-bar post demarking the corners with a ten foot, three-quarter inch PVC at the origin. The plots are 10 meters square and are located randomly within the Site. These plots were surveyed in September for the year 1 (2010) monitoring season using the *CVS-EEP Protocol for Recording Vegetation, Version 4.0* (Lee et al. 2006) (<http://cvs.bio.unc.edu/methods.htm>); results are included in Appendix C. The taxonomic standard for vegetation used for this document was *Flora of the Carolinas, Virginia, Georgia, and Surrounding Areas* (Weakley 2007).

2.2 Wetland Assessment

Two groundwater monitoring gauges were installed at the Site within off-line wetlands in June 2010 and have been maintained and monitored throughout the remainder of the year 1 (2010) growing season. Graphs of groundwater hydrology and precipitation are included in Appendix D.

3.0 REFERENCES

- Lee, Michael T., R.K. Peet, S.D. Roberts, and T.R. Wentworth. 2006. CVS-EEP Protocol for Recording Vegetation, Version 4.0. (online). Available: <http://cvs.bio.unc.edu/methods.htm>.
- National Oceanic and Atmospheric Administration (NOAA). 2004. Climatology of the United States No. 20; Monthly Station Climate Summaries, 1971-2000. National Oceanic and Atmospheric Administration, National Environmental Satellite, Data, and Information Service, National Climatic Data Center, Asheville, North Carolina.
- North Carolina Ecosystem Enhancement Program (NCEEP). 2007. Catawba River Basin Restoration Priorities. Available: <http://www.nceep.net/services/restplans/RBRPCatawba2007.pdf> [June 2010]. North Carolina Department of Environment and Natural Resources, Ecosystem Enhancement Program. Raleigh, North Carolina.
- Weakley, Alan S. 2007. Flora of the Carolinas, Virginia, Georgia, and Surrounding Areas (online). Available: <http://www.herbarium.unc.edu/WeakleysFlora.pdf> [February 1, 2008]. University of North Carolina Herbarium, North Carolina Botanical Garden, University of North Carolina, Chapel Hill, North Carolina.
- Weather Underground. 2010. Station at Charlotte Douglas International Airport (KCLT) in Charlotte, North Carolina. (online). Available: <http://www.wunderground.com/history/airport/KCLT/2010/4/19/CustomHistory.html> [October 19, 2009].

APPENDIX A

PROJECT VICINITY MAP AND BACKGROUND TABLES

Figure 1. Vicinity Map

Table 1. Project Components and Mitigation Credits

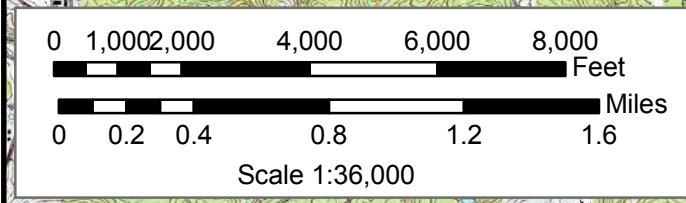
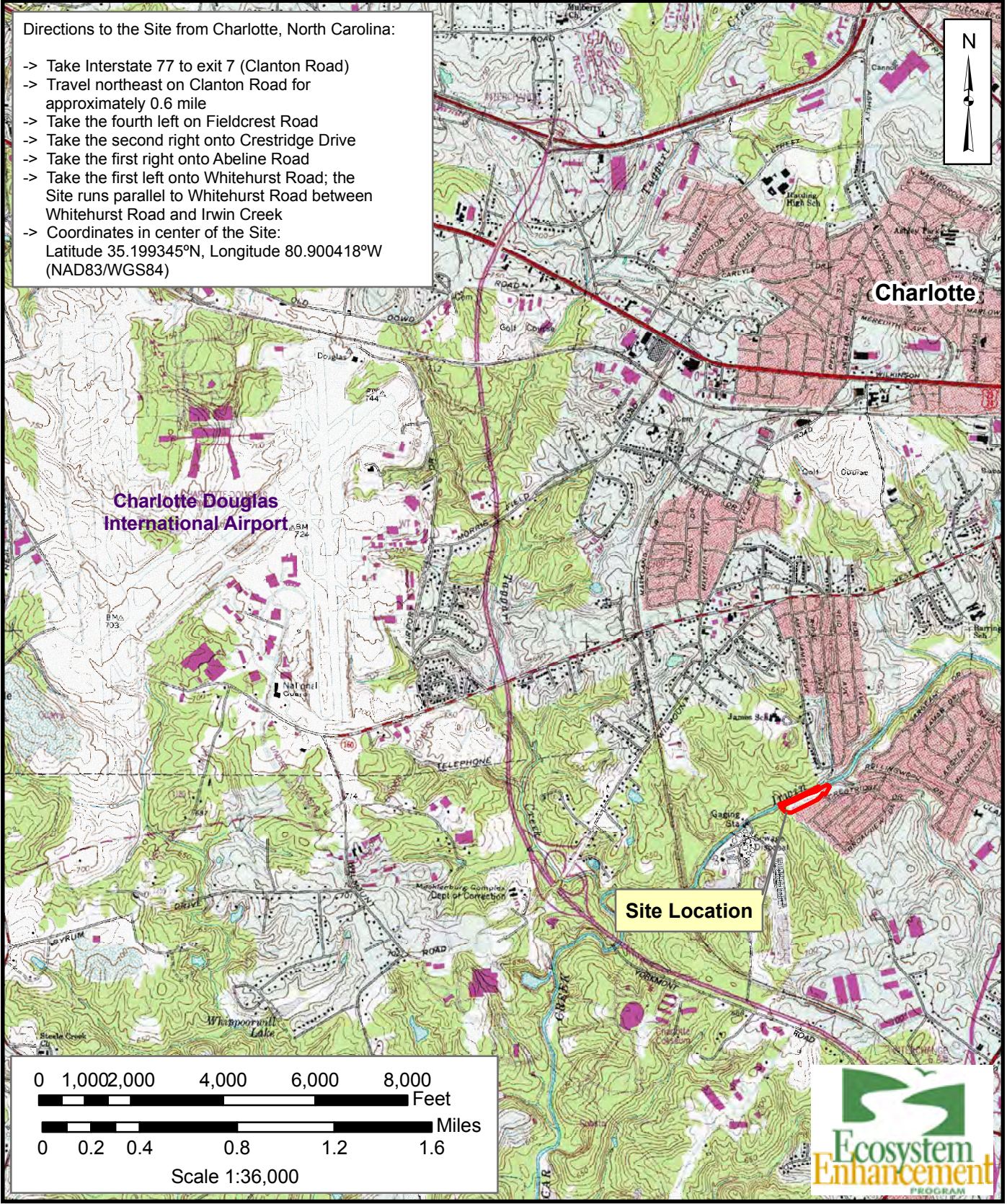
Table 2. Project Activity and Reporting History

Table 3. Project Contacts Table

Table 4. Project Baseline Information and Attributes

Directions to the Site from Charlotte, North Carolina:

- > Take Interstate 77 to exit 7 (Clanton Road)
- > Travel northeast on Clanton Road for approximately 0.6 mile
- > Take the fourth left on Fieldcrest Road
- > Take the second right onto Crestridge Drive
- > Take the first right onto Abeline Road
- > Take the first left onto Whitehurst Road; the Site runs parallel to Whitehurst Road between Whitehurst Road and Irwin Creek
- > Coordinates in center of the Site:
Latitude 35.199345°N, Longitude 80.900418°W
(NAD83/WGS84)



20 Enterprise Street
Suite 7
Raleigh, NC 27607
(919) 215-1693

Axiom Environmental, Inc.

VICINITY MAP
IRWIN CREEK STREAM RESTORATION SITE
EEP PROJECT NUMBER 192
Mecklenburg County, North Carolina

Dwn. by:	CLF
Date:	June 2010
Project:	10-009

FIGURE
1

**Table 1. Project Components and Mitigation Credits
Irwin Creek Restoration Site/EEP Project Number 192**

Mitigation Credits								
Stream				Riverine Riparian Wetland				
Type	Restoration		Restoration Equivalent		Restoration		Restoration Equivalent	
Totals	--		653		--		0.17	
Projects Components								
Project Component/ Reach ID	Station Range	Existing Linear Footage/ Acreage	Priority Approach	Restoration/ Restoration Equivalent	Restoration Linear Footage/ Acreage	Mitigation Ratio	Comment	
Irwin Creek	--	980	Level II	Enhancement	980	1.5:1*	Laying back stream banks, excavation of a 90- to 100-foot wide floodplain bench along the entire project, creation of wetlands within the floodplain bench, and planting with native forest vegetation.	
Wetland	--	0	--	Creation	0.5	3:1	Excavation of depressional wetlands within the floodplain bench and planting with native forest vegetation.	
Component Summation								
Restoration Level		Stream (linear footage)			Riparian Wetland (acreage)			
Enhancement (Level II)		980			Riverine			
Creation		--			0.5			
Totals		980			0.5			
Mitigation Units		653 SMUs*			0.17 WMUs			

* A ratio of 1.5:1 was used due to the extensive excavation of a 90- to 100-foot wide floodplain bench along the entire project in addition to the incorporation of created wetlands within the floodplain bench area.

**Table 2. Project Activity and Reporting History
Irwin Creek Restoration Site/EEP Project Number 192**

Elapsed Time Since Grading Complete: 1.5 years

Elapsed Time Since Planting Complete: 1 year

Number of Reporting Years: 1

Activity or Deliverable	Data Collection Complete	Completion or Delivery
Restoration Plan	--	October 2003
Site Construction and 1st Planting	--	Spring 2009
2nd Planting	--	Late fall/early winter 2009
As-built Analysis Report	--	March 2010
As-built Record Drawings	--	March 2010
Baseline Monitoring Document	June 2010	October 2010
Year 1 (2010) Monitoring Document	November 2010	October 2010

**Table 3. Project Contacts Table
Irwin Creek Restoration Site/EEP Project Number 192**

Designer	HDR Engineering of the Carolinas, Inc. 3733 National Drive Raleigh, NC 27612 919-785-1118
Construction and Seeding and Matting Contractor	Blythe Development Company 1415 E. Westinghouse Charlotte, NC 28273
Planting Contractor	North State Environmental, Inc. 2889 Lowery Street, Suite B Winston Salem, NC 27101 336-725-2010

**Table 4. Project Baseline Information and Attributes
Irwin Creek Restoration Site/EEP Project Number 192**

Project Information	
Project Name	Irwin Creek Restoration Site
Project County	Mecklenburg County, North Carolina
Project Area	5.7 acres
Project Coordinates	35.199345°N, 80.900418°W
Project Watershed Summary Information	
Physiographic Region	Piedmont
Ecoregion	Southern Outer Piedmont
Project River Basin	Catawba
USGS 8-digit HUC	03050103
USGS 14-digit HUC	03050103020020
NCDWQ Subbasin	03-08-34
Project Drainage Area	20,000 acres
Project Drainage Area Impervious Surface	>30%
CGIS Land Use Classification	
Reach Summary Information	
Enhanced length	980 linear feet
Drainage Area	31 square miles
NCDWQ Index Number	11-137-1
NCDWQ Classification	C
Dominant Soil Series	Monacan
Drainage Class	Moderately well-somewhat poorly
Soil Hydric Status	Contains 5% hydric Wehadkee soils
Wetland Summary Information	
Size of Wetland	0.5 acres
Wetland Type	Riparian riverine
Mapped Soil Series	Monacan
Drainage Class	Moderately well-somewhat poorly
Soil Hydric Status	Contains 5% hydric Wehadkee soils
Source of Hydrology	Stormwater, stream overbank
Regulatory Considerations	
Regulation	Applicable
Waters of the U.S. –Sections 404 and 401	No
Endangered Species Act	No
Historic Preservation Act	No
CZMA/CAMA	No
FEMA Floodplain Compliance	No
Essential Fisheries Habitat	No

APPENDIX B

VISUAL ASSESSMENT DATA

Figure 2. Current Conditions Plan View

Table 5. Vegetation Condition Assessment Table

Vegetation Monitoring Plot Photos

Legend

- Conservation Easement = ~ 5.7 acres
- ★ Vegetation Plot Origins
- Vegetation Plots**
- Met Success Based on Planted Stems
- Did Not Meet Success Based on Planted Stems Only
- Groundwater Gauges not meeting success
- Photo Points
- Wetland Creation = 0.5 acre
- Planting Zones = ~ 3.2 acres**
- Zone 1: Streamside Assemblage
- Zone 2: Floodplain Bench
- Zone 3: Floodplain Bench/Depression
- Zone 4: Slope
- Structures
- Roads



Prepared for:



Project:

IRWIN CREEK RESTORATION SITE

EEP Project Number 192
Avery County, NC

Title:

CURRENT CONDITIONS PLAN VIEW

Drawn by:

CLF

Date:

NOV 2010

Scale:

1:1200

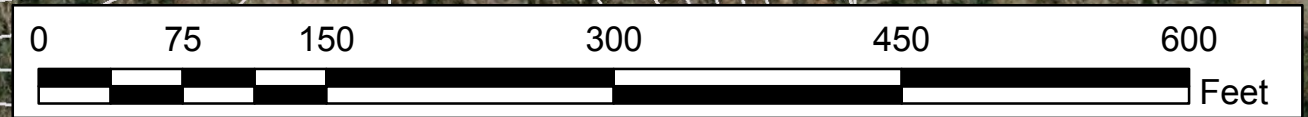
Project No.:

10-009

FIGURE

2

Background Imagery:
2005 Mecklenburg County
aerial photography, NC One Map
LIDAR, 2-foot contours, NCDOT



Monitoring Feature	Latitude	Longitude
Vegetation Plot Corners		
plot 1 origin	35.19894	-80.90159
plot 1	35.19899	-80.90175
plot 1	35.19890	-80.90169
plot 1	35.19902	-80.90164
plot 2 origin	35.19891	-80.90110
plot 2	35.19887	-80.90120
plot 2	35.19896	-80.90124
plot 2	35.19899	-80.90114
plot 3 origin	35.19936	-80.90031
plot 3	35.19943	-80.90044
plot 3	35.19935	-80.90042
plot 3	35.19945	-80.90033
plot 4 origin	35.19934	-80.89967
plot 4	35.19938	-80.89981
plot 4	35.19930	-80.89976
plot 4	35.19942	-80.89972
plot 5 origin	35.19995	-80.89916
plot 5	35.19990	-80.89928
plot 5	35.19997	-80.89927
plot 5	35.19988	-80.89918
Photo Point Locations		
photo 1	35.19890	-80.90195
photo 2	35.19879	-80.90108
photo 3	35.19934	-80.90059
photo 4	35.19921	-80.90045
photo 5	35.19984	-80.89953
Groundwater Monitoring Gauges		
gauge 1	35.19962	-80.89983
gauge 2	35.19885	-80.90156

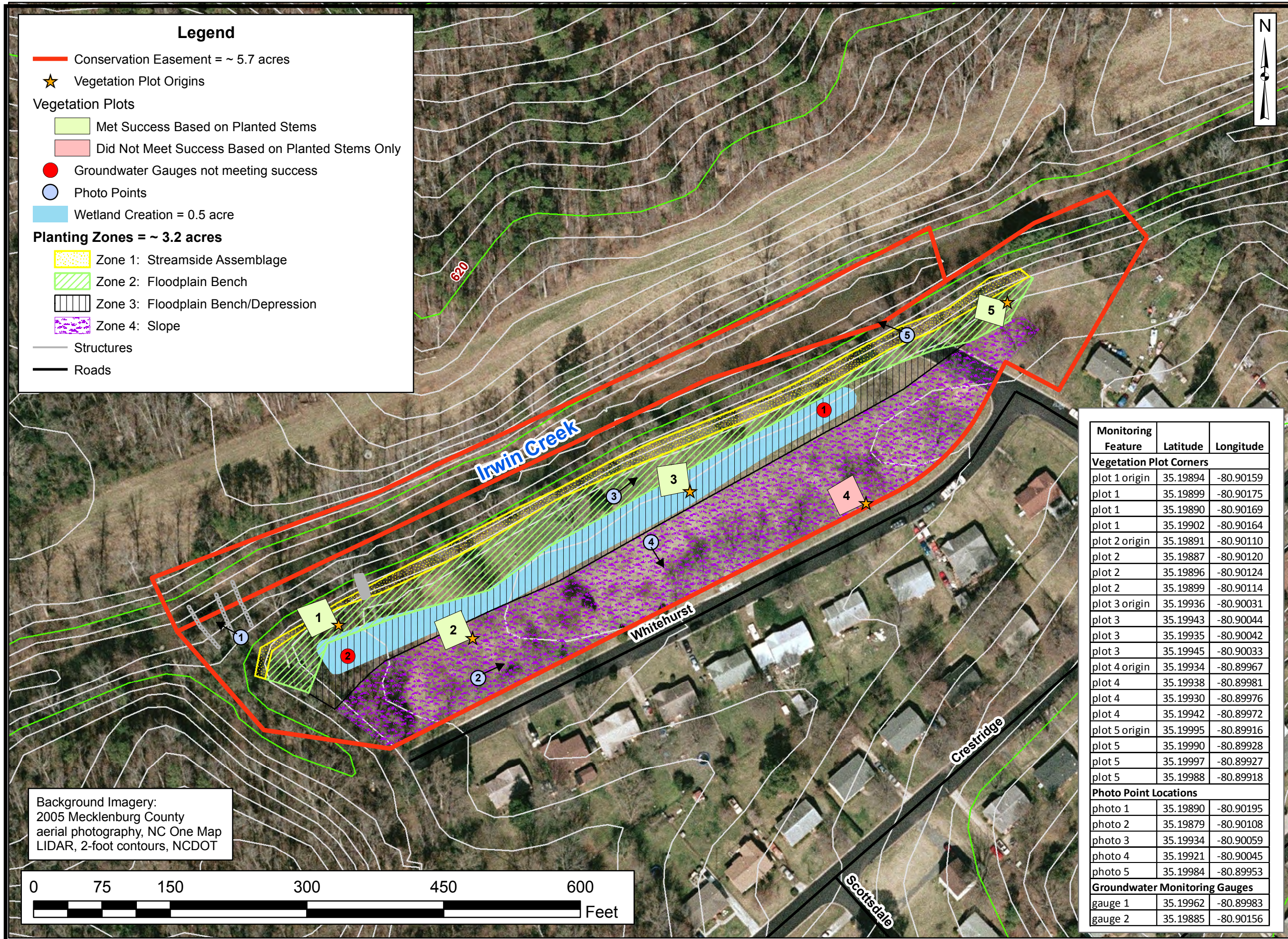


Table 5 **Vegetation Condition Assessment**
Irwin Creek Restoration Site/EEP Project Number 192

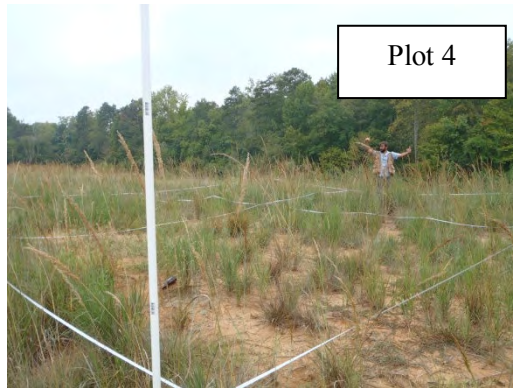
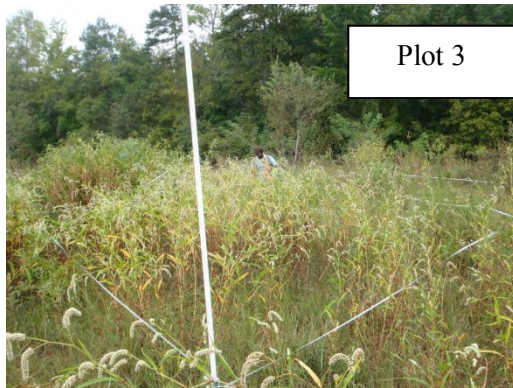
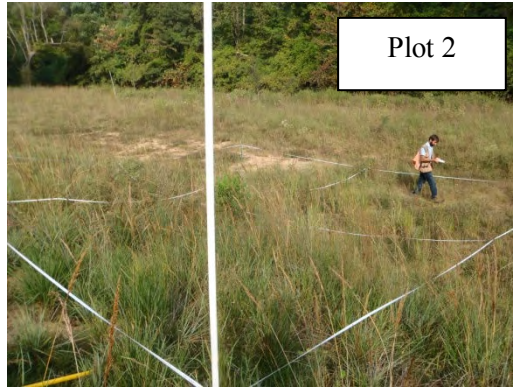
Planted Acreage¹ **3.2**

Vegetation Category	Definitions	Mapping Threshold	CCPV Depiction	Number of Polygons	Combined Acreage	% of Planted Acreage
1. Bare Areas	NA	NA	NA	NA	NA	NA
2. Low Stem Density Areas	NA	NA	NA	NA	NA	NA
Total				0	0.00	0.0%
3. Areas of Poor Growth Rates or Vigor	In general herbaceous vegetation within the Site has been slow to establish, planted ball and burlap trees appear to be in poor health, and many of the planted trees died over the summer as the result of dry conditions. This is difficult to quantify or depict on mapping since these observations were made scattered throughout the entire Site.	NA	NA	NA	2.25	70.3%
Cumulative Total				0	2.25	70.3%

Easement Acreage² **14**

Vegetation Category	Definitions	Mapping Threshold	CCPV Depiction	Number of Polygons	Combined Acreage	% of Easement Acreage
4. Invasive Areas of Concern ⁴	NA	NA	NA	NA	NA	NA
5. Easement Encroachment Areas ³	NA	NA	NA	NA	NA	NA

Vegetation Monitoring Photographs
Taken September 2010



APPENDIX C

VEGETATION PLOT DATA

Table 6. Vegetation Plot Criteria Attainment

Table 7. CVS Vegetation Plot Metadata

Table 8. Total and Planted Stems by Plot and Species

**Table 6. Vegetation Plot Criteria Attainment
Irwin Creek Restoration Site (EEP Project Number 192)**

Vegetation Plot ID	Vegetation Survival Threshold Met?	Tract Mean
1	Yes	80%
2	Yes	
3	Yes	
4	No*	
5	Yes	

*Based on planted stems alone, this plot is one stem shy of meeting success criteria; however, with the additional natural recruit of red maple (*Acer rubrum*) this plot contains 324 stems per acre.

**Table 7. CVS Vegetation Plot Metadata
Irwin Creek Restoration Site (EEP Project Number 192)**

Report Prepared By	Corri Faquin
Date Prepared	9/28/2010 10:09
database name	Axiom-EEP-2010-A.mdb
database location	C:\Axiom\Business\CVS Database\2010
computer name	CORRI
file size	40185856
DESCRIPTION OF WORKSHEETS IN THIS DOCUMENT-----	
Metadata	Description of database file, the report worksheets, and a summary of project(s) and project data.
Proj, planted	Each project is listed with its PLANTED stems per acre, for each year. This excludes live stakes.
Proj, total stems	Each project is listed with its TOTAL stems per acre, for each year. This includes live stakes, all planted stems, and all natural/volunteer stems.
Plots	List of plots surveyed with location and summary data (live stems, dead stems, missing, etc.).
Vigor	Frequency distribution of vigor classes for stems for all plots.
Vigor by Spp	Frequency distribution of vigor classes listed by species.
Damage	List of most frequent damage classes with number of occurrences and percent of total stems impacted by each.
Damage by Spp	Damage values tallied by type for each species.
Damage by Plot	Damage values tallied by type for each plot.
ALL Stems by Plot and spp	A matrix of the count of PLANTED living stems of each species for each plot; dead and missing stems are excluded.
PROJECT SUMMARY-----	
Project Code	192
project Name	Irwin Creek Whitehurst Road
Description	
River Basin	Catawba
length(ft)	
stream-to-edge width (ft)	
area (sq m)	
Required Plots (calculated)	
Sampled Plots	5

**Table 8. Total and Planted Stems by Plot and Species
Irwin Creek Restoration Site (EEP Project Number 192)**

Species	CommonName	Current Data (MY1 2010)										Annual Totals			
		plot 1		plot 2		plot 3		plot 4		plot 5		Current Mean MY1 (2010)		MY0 (Asbuilt)	
		Total	Planted	Total	Planted	Total	Planted	Total	Planted	Total	Planted	Total stems	Planted stems	Total stems	Planted stems
<i>Acer negundo</i>	boxelder	10		6		17		1	1			34	1	368	1
<i>Acer rubrum</i>	red maple			1				2	1	3	3	6	4	81	6
<i>Alnus serrulata</i>	hazel alder	2	2			1	1			3	2	6	5	6	6
<i>Aronia arbutifolia</i>	Red Chokeberry	2	2			3	3			4	4	9	9	9	9
<i>Betula nigra</i>	river birch	5	5	1		1	1			2	1	9	7	21	6
<i>Callicarpa americana</i>	American beautyberry	3	1			1	1			4	3	8	5	9	8
<i>Cephalanthus occidentalis</i>	common buttonbush	2	1			1	1			2	1	5	3	6	6
<i>Cornus amomum</i>	silky dogwood	2	2	1	1	1	1					4	4	4	4
<i>Fraxinus americana</i>	white ash	1	1									1	1	1	1
<i>Fraxinus pennsylvanica</i>	green ash	1	1	1	1	25	3	3	3	1	1	31	9	32	8
<i>Itea virginica</i>	Virginia sweetspire									2	1	2	1	2	2
<i>Liquidambar styraciflua</i>	sweetgum	1		1	1							2	1	4	1
<i>Liriodendron tulipifera</i>	tuliptree			5	3			2	2			7	5	8	8
<i>Platanus occidentalis</i>	American sycamore	4	4			1	1			1		6	5	7	7
<i>Populus deltoides</i>	eastern cottonwood			8	2	24						32	2	59	2
<i>Quercus nigra</i>	water oak													1	1
<i>Quercus phellos</i>	willow oak									1		1		1	1
<i>Rhus glabra</i>	smooth sumac													1	
<i>Salix nigra</i>	black willow	5	4	2								7	4	7	7
<i>Salix sericea</i>	silky willow	4	3									4	3	4	4
<i>Sambucus canadensis</i>	Common Elderberry			2	1							2	1	2	2
Unknown										1	1	1	1		
	Plot area (acres)	0.0247		0.0247		0.0247		0.0247		0.0247					
	Species Count	13	11	10	6	10	8	4	4	11	9	20	19	21	20
	Stem Count	42	26	28	9	75	12	8	7	24	17	177	71	633	90
	Stems per acre	1700	1053	1134	364	3036	486	324	283	972	688	1433	575	5126	729

APPENDIX D
STREAM SURVEY DATA
Fixed-Station Photos

**Irwin Creek
Taken July 2010**



Photo Point 1: Downstream structure left in place to avoid disturbance to wetlands and stream banks in addition to provide potential aquatic habitat and channel grade control



Photo Point 2:
Levee Area



Photo Point 3:
Excavated bench area

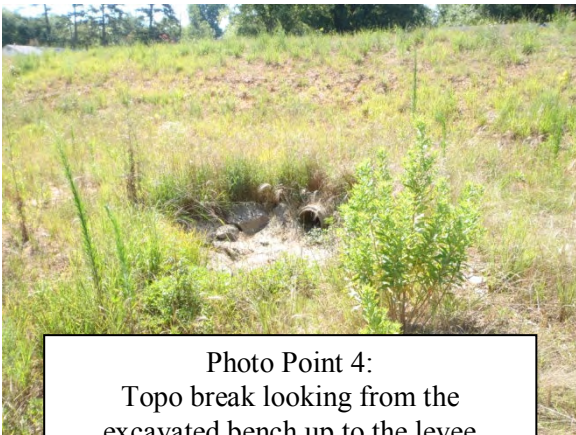


Photo Point 4:
Topo break looking from the excavated bench up to the levee



Photo Point 5:
Stream-side assemblage

APPENDIX E
HYDROLOGY DATA

Table 9. Verification of Bankfull Events

Figure 3. Annual Climatic Data vs. 30-year Historic Data

2010 (Year 1) Groundwater Gauge Graphs

Table 10. Wetland Hydrology Criteria Attainment

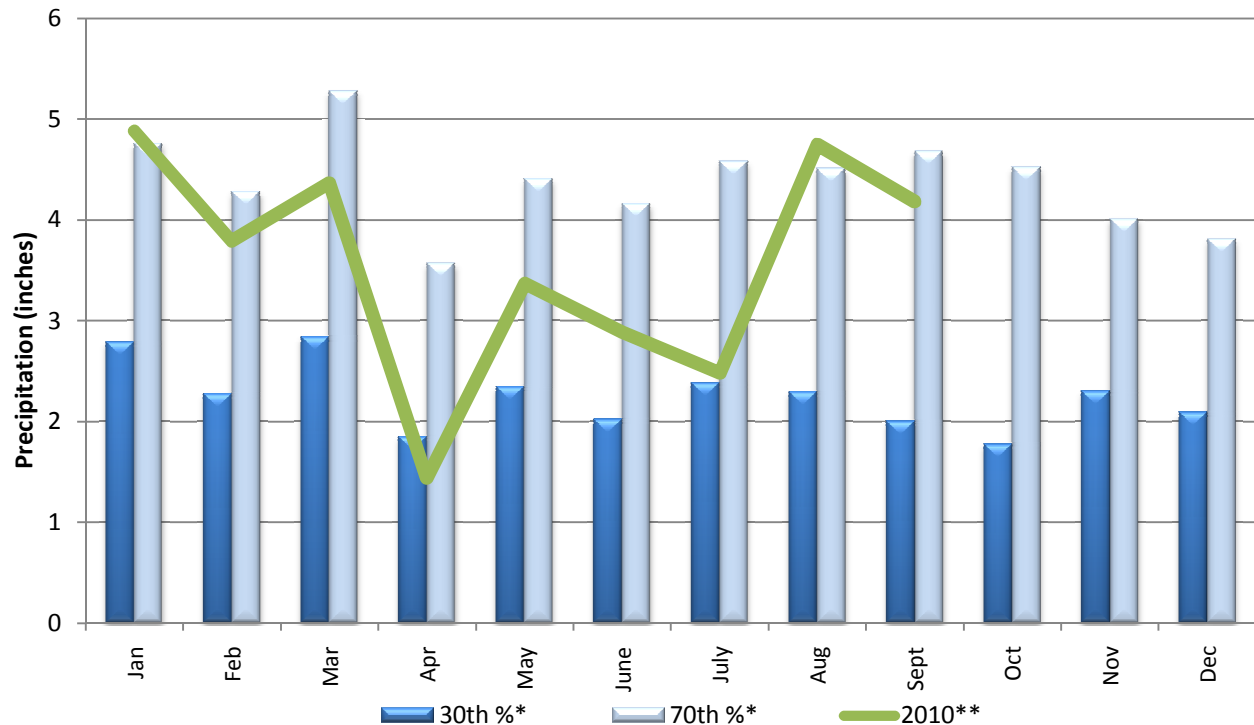
Table 9. Verification of Bankfull Events

Irwin Creek Restoration Site (EEP Project Number 192)

Date of Data Collection	Date of Occurrence	Method	Photo (if available)
September 23, 2010	July 12, 2010	Total of 2.14 inches* of rain reported to fall over 2 days (July 11-12, 2010) as well as a brief spike in groundwater at groundwater gauge 2	--
September 23, 2010	August 19, 2010	Total of 1.1 inches* of rain reported to fall over 2 days (August 18-19, 2010) after a total of 4.43 inches* of rain the preceding 4 weeks as well as brief spike in groundwater at groundwater gauges 1 and 2	--
October 18, 2010	September 29, 2010	Total of 4.04 inches* of rain reported to fall over 6 days (September 25-30, 2010)	---

* Reported at KCLT Weather Station at the Charlotte Airport (Weatherunderground 2010).

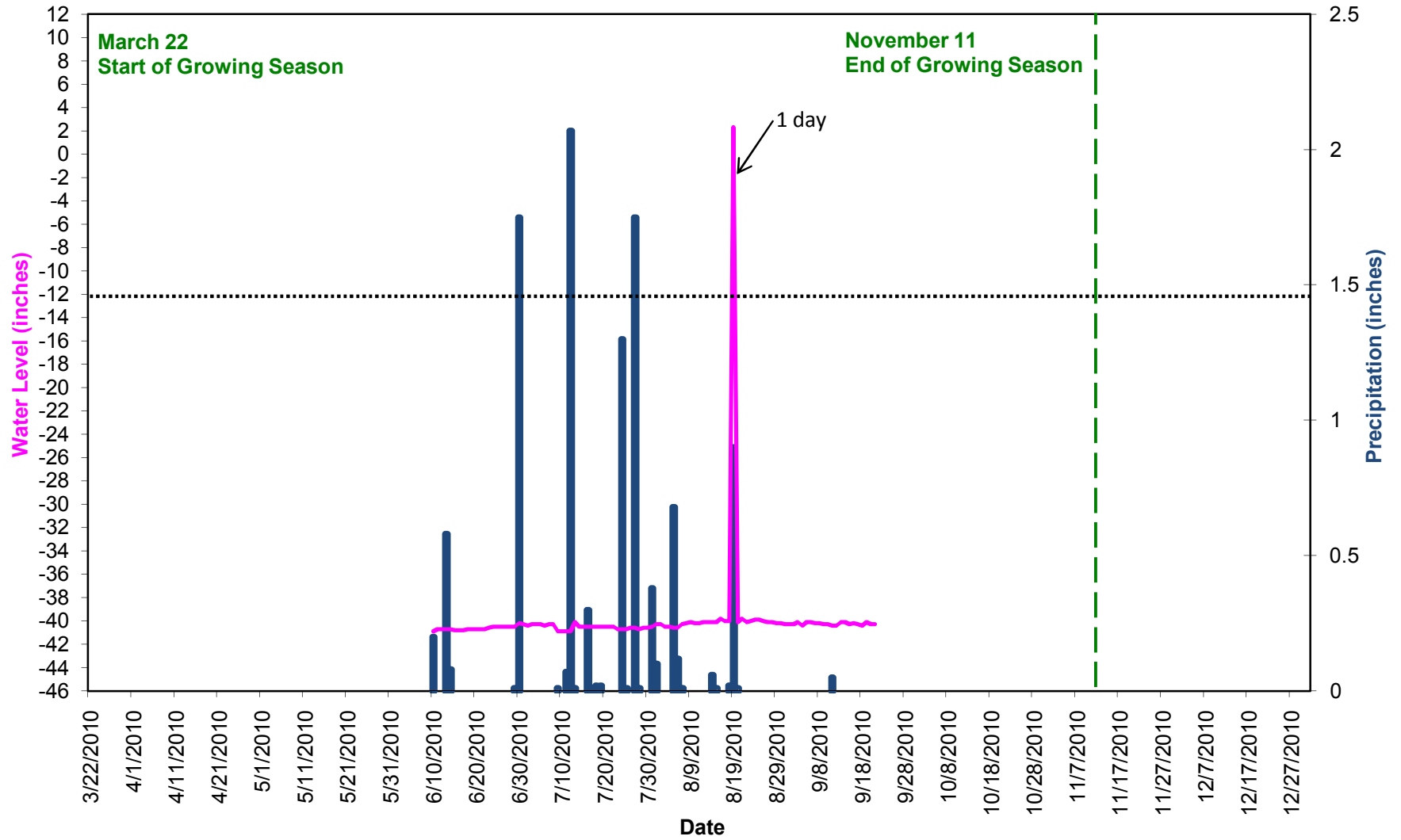
Figure 3. Annual Climatic Data vs. 30-year Historic Data



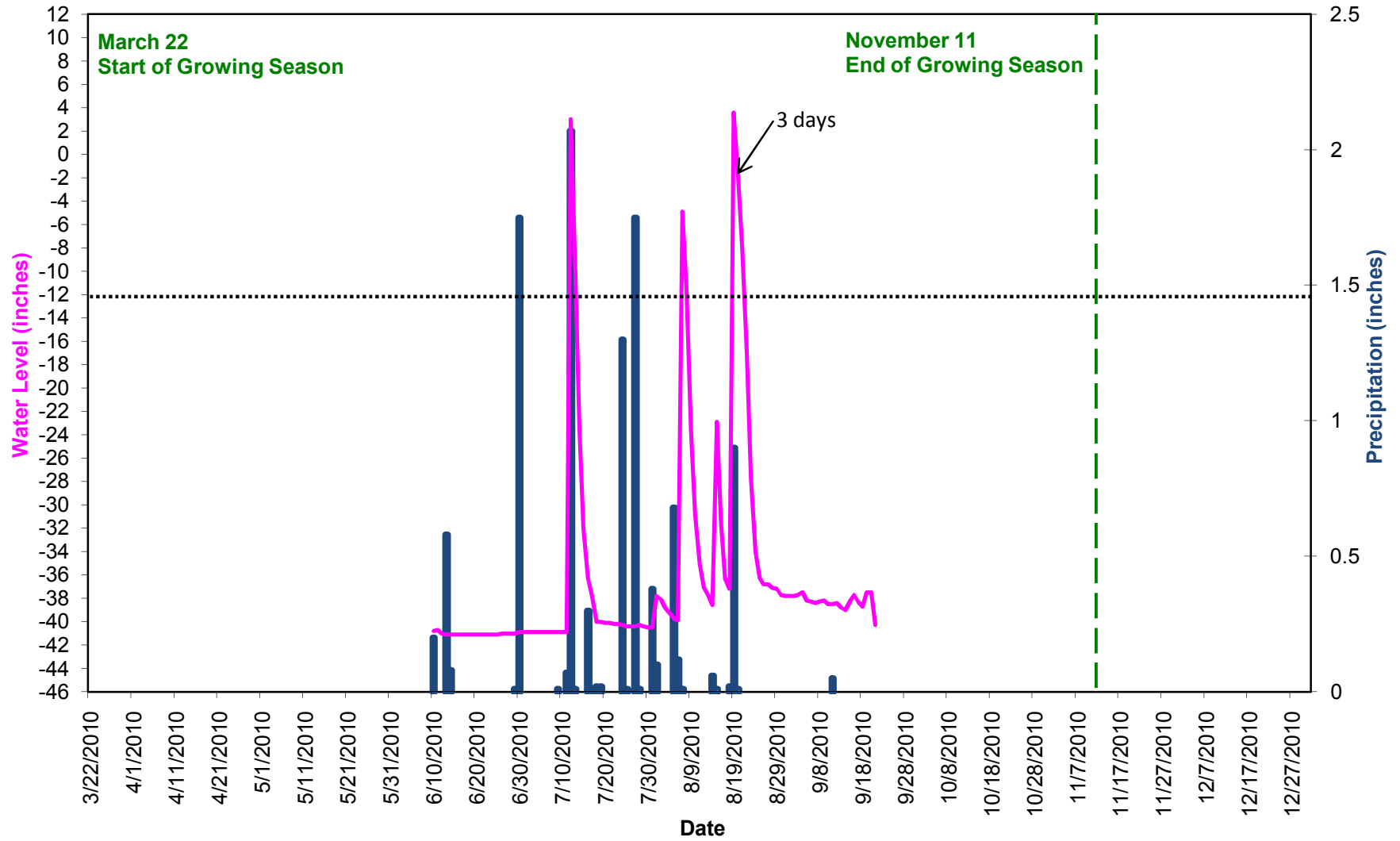
*Charlotte Douglas International Airport 30-year historic data (NOAA 2004)

**Charlotte Douglas International Airport rainfall data (Weatherunderground 2010)

Irwin Creek Groundwater Gauge 1 Year 1 (2010 Data)



Irwin Creek Groundwater Gauge 2 Year 1 (2010 Data)



**Table 10. Wetland Hydrology Criteria Attainment Summary
Irwin Creek Restoration Site (EEP Project Number 192)**

Gauge	Success Criteria Achieved/Max Consecutive Days During Growing Season (Percentage)				
	Year 1 (2010)*	Year 2 (2011)	Year 3 (2012)	Year 4 (2013)	Year 5 (2014)
1	No/1 day (0.004 %)				
2	No/3 days (0.01 %)				

* Data is presented from June 10, 2010 through September 23, 2010; gauges will continued to be downloaded through the remainder of the growing season and will be available upon request.