

**FOURTH ANNUAL MONITORING REPORT – 2008 GROWING SEASON**

**Little Contentnea Creek Riparian Buffer Restoration – Phase 3  
(EEP Contract: 005020)**



**August 2008**

**Submitted to:**



**Guy Pearce  
North Carolina Ecosystem Enhancement  
Program  
2728 Capital Blvd., Suite 1H 103  
Raleigh, NC 27604**

**Submitted by:**

**Robert J. Goldstein and Associates, Inc.  
1221 Corporation Pkwy., Suite 100  
Raleigh, NC 27610**



**Submitted for:**



**Greene Environmental  
Services, LLC  
90 Ham Produce Road  
Snow Hill, NC 28580  
(252) 747-8200**

## **INTRODUCTION AND BACKGROUND**

On 27 June 2005 the NC Ecosystem Enhancement Program awarded Greene Environmental Services a contract to restore 54.16 acres of riparian buffer along Little Contentnea Creek and its unnamed tributaries in southeastern Greene County, NC (Figure 1) (Phase 3). The project was a continuation of the successful Phase 1 and Phase 2 projects that restored a total of 87.1 acres of riparian buffers along unnamed tributaries to Little Contentnea Creek and Contentnea Creek. The Little Contentnea Creek Riparian Buffer Restoration Plan Phase 3 was implemented in 2005 with site preparation, the planting of 28,000 saplings of 11 species, and the establishment of 60 monitoring quadrats in 17 sampling units, as specified in the project's Mitigation Plan (GES, 2005) (Figure 2).

Woody stem density, diameter, and height measurements were recorded in August 2008 within each of the 60 100-square meter quadrats, as detailed in the Mitigation Plan. The monitoring results, management activities to date, and planned management activities are presented below.

## **RESULTS**

During the August 2008 monitoring, 545 planted, woody stems were recorded within the 60 quadrats, resulting in an average density of 368 planted, woody stems per acre (Table 1A). Additionally, a total of 3,049 native *volunteers* were recorded (2,321 *Acer rubrum* and 622 *Liquidambar styraciflua*) within the monitoring quadrats (Table 1B). All recorded stems combined (i.e. planted + *volunteer*), total 3,594 live stems and results in an average density of 2,424 woody stems per acre. This density exceeds the success criterion of 320 live woody stems per acre by 658 percent.

Monitoring data for planted stems indicate that *Fraxinus pennsylvanica* is the most abundant tree species (41.47 percent relative density) while *Platanus occidentalis* was the species with the greatest average height (2.89 meters) (Table 1A). The average of relative diameter and relative density was calculated for planted species and is presented here as the importance value. Based on this calculation, in 2008 *P. occidentalis* is the most important planted species in the project area with a value of 26.02, followed by *F. pennsylvanica*, which had a value of 23.64. Other important species included *Quercus nigra* (9.36), *Quercus phellos* (8.30) and *Taxodium distichum* (8.22). Considered collectively, the oaks were first in importance (34.26).

## **MAINTENANCE (COMPLETED AND PLANNED) AND QUALITATIVE OBSERVATIONS**

As observed in past years, areas that had a moderately dense canopy of early successional vegetation (e.g. *Conyza canadensis* and *Eupatorium capillifolium*, 60-80 percent foliar cover) experienced lower planted woody stem mortality. Because planted species success quantitatively and qualitatively appears to be higher in areas with a moderately dense early successional herbaceous overstory, these areas have not been sprayed or cut since 2005.

No invasive, exotic woody species were identified as problem areas or in need of removal. *L. styraciflua* and *A. rubrum*, which are by far the dominant *volunteer* woody stems counted or observed, are both native to southeastern Greene County and will not be removed.

In January 2007, remedial planting of bare root saplings of *Betula nigra*, *Nyssa biflora*, *Quercus michauxii*, and *Quercus phellos* was conducted. The 2007-2008 drought caused some additional mortality and resulted in low, live, planted stem density in portions of Tracts 2, 7, 8, 11, 12, 13, and 16 (Table 1C and Figure 2). Remedial actions will be taken this winter to address these problem areas.

**Table 1A. Importance Values for Planted Individuals - Little Contentnea Creek Riparian Buffer Restoration - Phase 3 - Greene County, NC**

Species	Total Living	Total Dead	Average Height (cm)	Average Diameter (cm)	Relative Diameter (%)	Relative Density (%)	Importance Value
<i>Fraxinus pennsylvanica</i>	226	55	45	0.71	5.81	41.47	23.64
<i>Liriodendron tulipifera</i>	26	15	57	0.58	4.80	4.77	4.78
<i>Nyssa biflora</i>	15	3	38	0.41	3.39	2.75	3.07
<i>Platanus occidentalis</i>	102	8	289	4.06	33.33	18.72	26.02
<i>Quercus falcata</i>	1	0	77	1.10	9.03	0.18	4.60
<i>Quercus lyrata</i>	1	0	104	1.00	8.20	0.18	4.19
<i>Quercus michauxii</i>	0	1			0.00	0.00	0.00
<i>Quercus nigra</i>	62	5	72	0.90	7.34	11.38	9.36
<i>Quercus phellos</i>	59	1	74	0.70	5.77	10.83	8.30
<i>Quercus rubra</i>	2	0	53	0.70	5.74	0.37	3.06
<i>Quercus virginiana</i>	9	0	109	0.93	7.66	1.65	4.65
<i>Quercus spp.</i>	1	23	9	0.00	0.00	0.18	0.09
<i>Taxodium distichum</i>	41	1	138	1.09	8.93	7.52	8.22

**Total Living**                    **545**                    **112**  
**Total Volunteers**            **3,049**  
**Total Stems**                    **3,594**  
**Ave. Planted Stems/Acre**      **368**  
**Ave. Stems/Acre**                **2,424**

**Table 1B. Volunteer Woody Stems Summary - Little Contentnea Creek - Phase 3**

Species	10-50cm	50-100cm	100-137cm	0-1 cm	1-2.5	2.5	5	10	15	20	25	30	35	40	Total by Species
<i>Acer rubrum</i>	2314	7	0	0	0	0	0	0	0	0	0	0	0	0	2321
<i>Baccharis halimifolia</i>	10	12	8	14	3	0	0	0	0	0	0	0	0	0	47
<i>Betula nigra</i>	0	1	0	0	0	0	0	0	0	0	0	0	0	0	1
<i>Carpinus caroliniana</i>	1	0	0	0	0	0	0	0	0	0	0	0	0	0	1
<i>Celtis laevigata</i>	1	0	0	0	0	0	0	0	0	0	0	0	0	0	1
<i>Cornus amomum</i>	0	0	0	1	0	0	0	0	0	0	0	0	0	0	1
<i>Crataegus spp.</i>	18	5	0	0	0	0	0	0	0	0	0	0	0	0	23
<i>Ilex opaca</i>	1	5	0	0	0	0	0	0	0	0	0	0	0	0	6
<i>Ligustrum sinensis</i>	0	0	0	0	0	0	0	0	0	0	0	0	0	0	0
<i>Liquidambar styraciflua</i>	300	163	71	43	42	0	2	1	0	0	0	0	0	0	622
<i>Nyssa biflora</i>	0	0	0	1	0	0	0	0	0	0	0	0	0	0	1
<i>Pinus taeda</i>	1	1	1	0	0	0	0	0	0	0	0	0	0	0	3
<i>Prunus serotina</i>	0	2	0	0	0	0	0	0	0	0	0	0	0	0	2
<i>Quercus laurifolia</i>	0	1	1	0	0	0	0	0	0	0	0	0	0	0	2
<i>Quercus michauxii</i>	11	1	0	0	0	0	0	0	0	0	0	0	0	0	12
<i>Quercus nigra</i>	2	1	0	0	0	0	0	0	0	0	0	0	0	0	3
<i>Quercus phellos</i>	1	0	0	0	0	0	0	0	0	0	0	0	0	0	1
<i>Salix sp.</i>	1	0	0	0	1	0	0	0	0	0	0	0	0	0	2

**Total by Size Class**                    2661                    199                    81                    59                    46                    0                    2                    1                    0                    0                    0                    0                    0                    0

**Total Volunteers**                    **3,049**

**Table 1C. Average Stem per Acre by Plot - Little Contentnea Creek - Phase 3**

<b>Plot</b>	<b>Planted Stems/Plot</b>	<b>Planted Stems/Acre</b>	<b>Volunteers/Plot</b>	<b>Total Stems/Plot</b>	<b>Total Stems/Acre</b>
1-1	11	445.2	3	14	566.6
1-2	11	445.2	0	11	445.2
1-3	10	404.7	0	10	404.7
2-1	7	283.3	0	7	283.3
2-2	6	242.8	18	24	971.3
2-3	15	607.1	1	16	647.5
2-4	7	283.3	0	7	283.3
3-1	10	404.7	10	20	809.4
3-2	14	566.6	303	317	12829.0
3-3	23	930.8	219	242	9793.7
4-1	14	566.6	42	56	2266.3
4-2	7	283.3	12	19	768.9
4-3	9	364.2	2	11	445.2
5-1	8	323.8	67	75	3035.3
5-2	11	445.2	28	39	1578.3
5-3	10	404.7	25	35	1416.5
6-1	12	485.6	22	34	1376.0
6-2	15	607.1	37	52	2104.4
6-3	12	485.6	16	28	1133.2
6-4	9	364.2	65	74	2994.8
7-1	2	80.9	49	51	2064.0
7-2	7	283.3	0	7	283.3
7-3	7	283.3	3	10	404.7
8-1	12	485.6	7	19	768.9
8-2	3	121.4	0	3	121.4
8-3	6	242.8	3	9	364.2
8-4	6	242.8	0	6	242.8
9-1	9	364.2	1	10	404.7
9-2	8	323.8	3	11	445.2
9-3	6	242.8	9	15	607.1
9-4	6	242.8	0	6	242.8
10-1	12	485.6	0	12	485.6
10-2	7	283.3	15	22	890.3
10-3	8	323.8	0	8	323.8
11-1	0	0.0	0	0	0.0
11-2	17	688.0	30	47	1902.1
11-3	15	607.1	2	17	688.0
11-4	4	161.9	0	4	161.9
12-1	9	364.2	22	31	1254.6
12-2	11	445.2	19	30	1214.1
12-3	9	364.2	47	56	2266.3
12-4	7	283.3	0	7	283.3
13-1	4	161.9	13	17	688.0
13-2	9	364.2	1	10	404.7
13-3	9	364.2	2	11	445.2
13-4	1	40.5	0	1	40.5
14-1	8	323.8	420	428	17321.2
14-2	8	323.8	577	585	23675.0



**Table 1C. Average Stem per Acre by Plot - Little Contentnea Creek - Phase 3**

<b>Plot</b>	<b>Planted Stems/Plot</b>	<b>Planted Stems/Acre</b>	<b>Volunteers/ Plot</b>	<b>Total Stems/Plot</b>	<b>Total Stems/Acre</b>
14-3	7	283.3	352	359	14528.7
14-4	12	485.6	530	542	21934.7
15-1	10	404.7	11	21	849.9
15-2	14	566.6	26	40	1618.8
15-3	7	283.3	12	19	768.9
15-4	11	445.2	15	26	1052.2
16-1	8	323.8	0	8	323.8
16-2	7	283.3	0	7	283.3
16-3	11	445.2	4	15	607.1
17-1	7	283.3	6	13	526.1
17-2	10	404.7	0	10	404.7
17-3	10	404.7	0	10	404.7



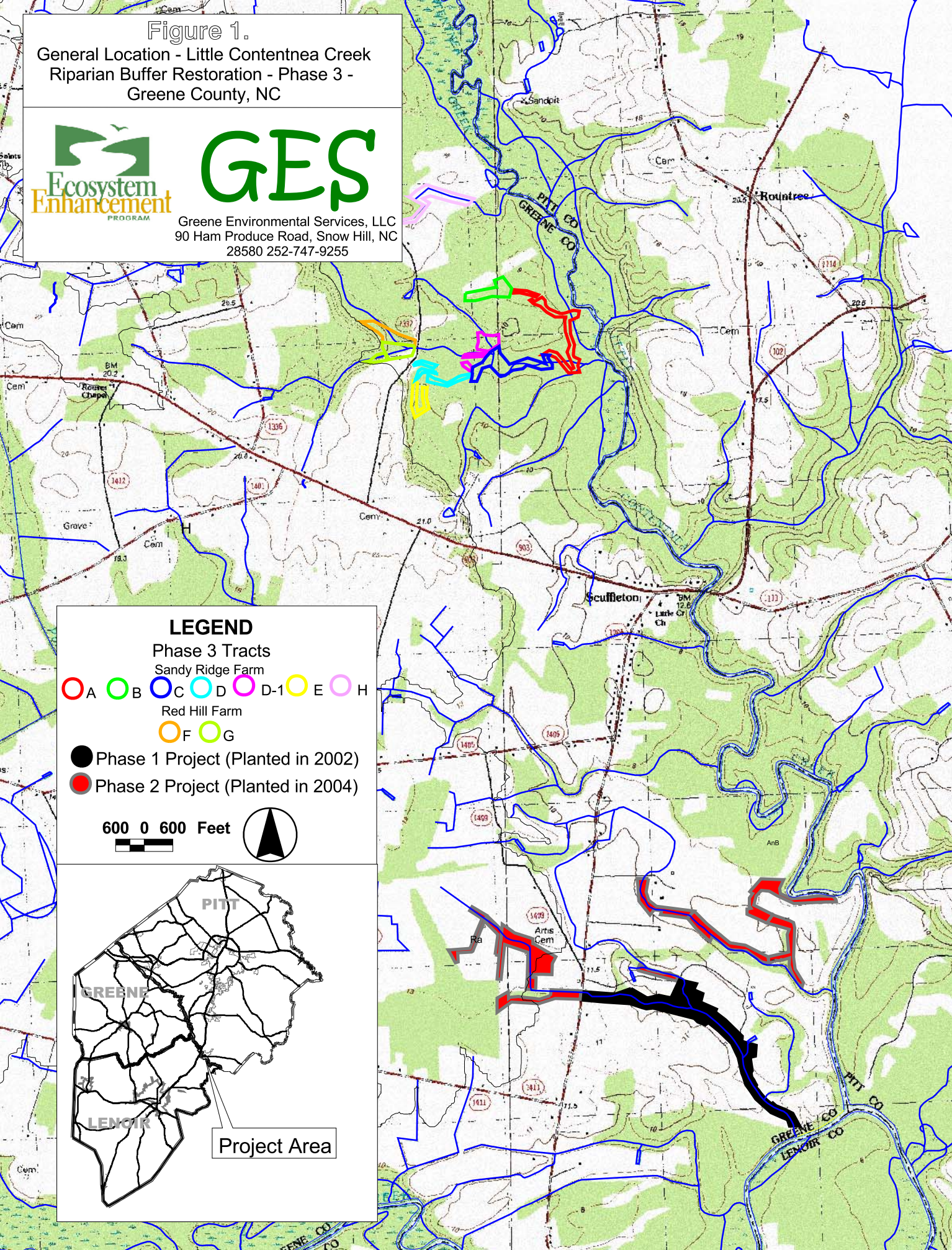
Figure 1.

General Location - Little Contentnea Creek  
Riparian Buffer Restoration - Phase 3 -  
Greene County, NC



# GES

Greene Environmental Services, LLC  
90 Ham Produce Road, Snow Hill, NC  
28580 252-747-9255



### LEGEND

Phase 3 Tracts  
Sandy Ridge Farm

A B C D D-1 E H

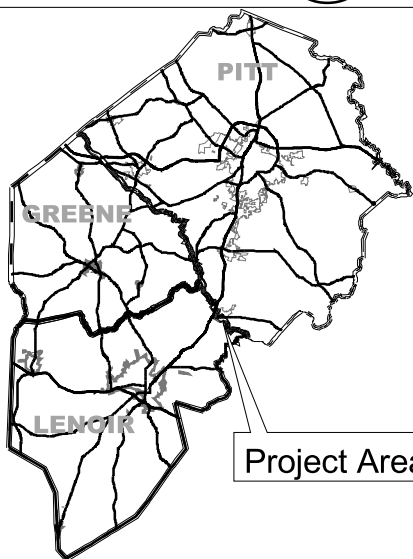
Red Hill Farm

F G

● Phase 1 Project (Planted in 2002)

● Phase 2 Project (Planted in 2004)

600 0 600 Feet






Project Area




Figure 2. Monitoring Plots by Success Status. Little Contentnea Creek Riparian Buffer Restoration - Phase 3

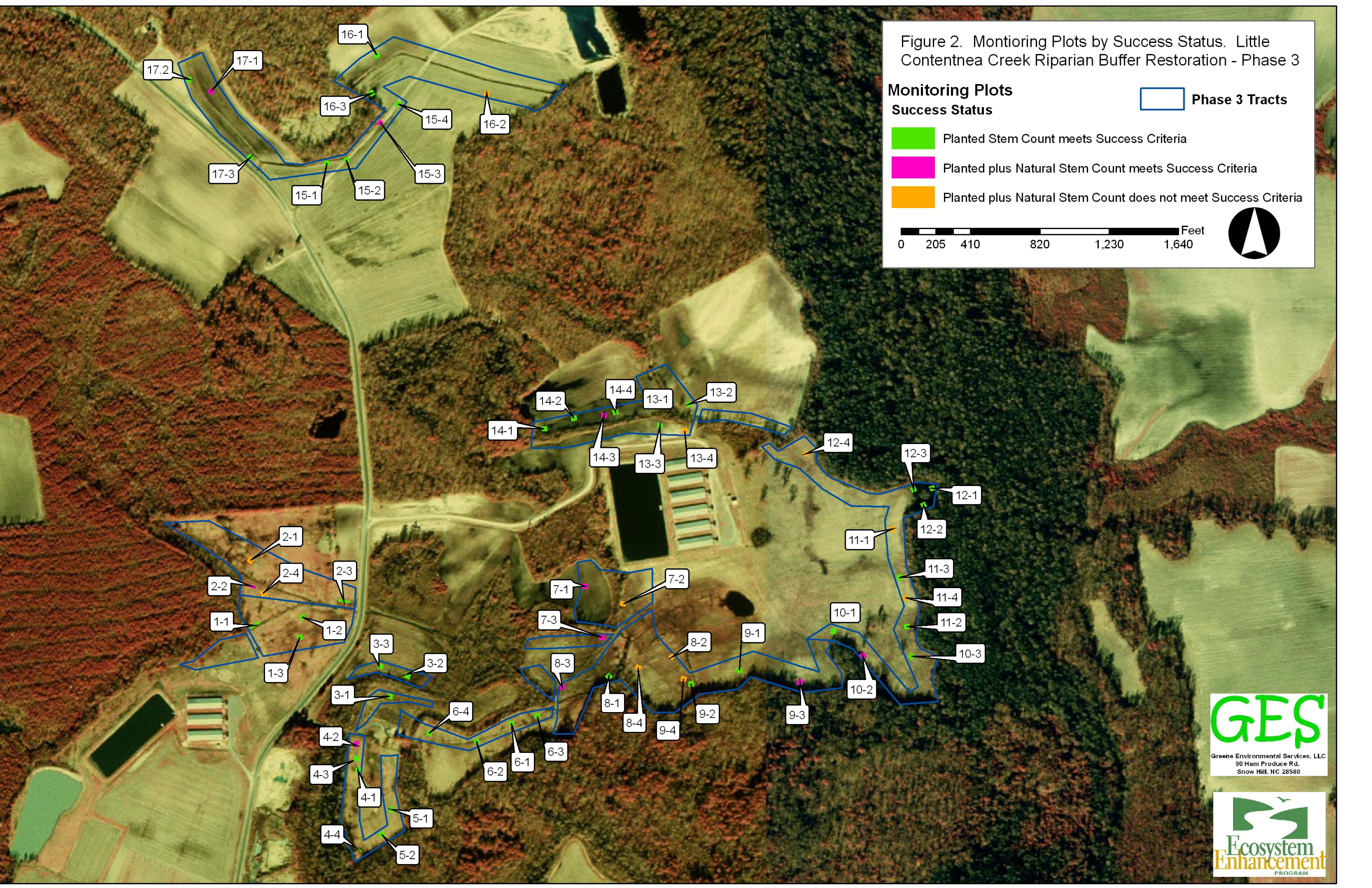

**Monitoring Plots**

**Success Status**

-  Planted Stem Count meets Success Criteria
-  Planted plus Natural Stem Count meets Success Criteria
-  Planted plus Natural Stem Count does not meet Success Criteria

 Phase 3 Tracts

0 205 410 820 1,230 1,640 Feet





Permanent Quadrat Photographs - 2008 - Little Contentnea Creek Riparian Buffer Restoration - Phase 3



Quadrat 1-1



Quadrat 1-2



Quadrat 1-3



Quadrat 2-1



Permanent Quadrat Photographs - 2008 - Little Contentnea Creek Riparian Buffer Restoration - Phase 3



Quadrat 2-2



Quadrat 2-3



Quadrat 2-4



Quadrat 3-1



Permanent Quadrat Photographs - 2008 - Little Contentnea Creek Riparian Buffer Restoration - Phase 3



Quadrat 3-2



Quadrat 3-3



Quadrat 4-1



Quadrat 4-2



**Permanent Quadrat Photographs - 2008 - Little Contentnea Creek Riparian Buffer Restoration - Phase 3**



**Quadrat 4-3**



**Quadrat 5-1**



**Quadrat 5-2**



**Quadrat 5-3**



Permanent Quadrat Photographs - 2008 - Little Contentnea Creek Riparian Buffer Restoration - Phase 3



Quadrat 6-1



Quadrat 6-2



Quadrat 6-3



Quadrat 6-4



Permanent Quadrat Photographs - 2008 - Little Contentnea Creek Riparian Buffer Restoration - Phase 3



Quadrat 7-1



Quadrat 7-2



Quadrat 7-3



Quadrat 8-1



Permanent Quadrat Photographs - 2008 - Little Contentnea Creek Riparian Buffer Restoration - Phase 3



Quadrat 8-2



Quadrat 8-3



Quadrat 8-4



Quadrat 9-1



Permanent Quadrat Photographs - 2008 - Little Contentnea Creek Riparian Buffer Restoration - Phase 3



Quadrat 9-2



Quadrat 9-3



Quadrat 9-4



Quadrat 10-1



Permanent Quadrat Photographs - 2008 - Little Contentnea Creek Riparian Buffer Restoration - Phase 3



Quadrat 10-2



Quadrat 10-3



Quadrat 11-1



Quadrat 11-2



Permanent Quadrat Photographs - 2008 - Little Contentnea Creek Riparian Buffer Restoration - Phase 3



Quadrat 11-3



Quadrat 11-4



Quadrat 12-1



Quadrat 12-2



Permanent Quadrat Photographs - 2008 - Little Contentnea Creek Riparian Buffer Restoration - Phase 3



Quadrat 12-3



Quadrat 12-4



Quadrat 13-1



Quadrat 13-2



**Permanent Quadrat Photographs - 2008 - Little Contentnea Creek Riparian Buffer Restoration - Phase 3**



**Quadrat 13-3**



**Quadrat 13-4**



**Quadrat 14-1**



**Quadrat 14-2**



Permanent Quadrat Photographs - 2008 - Little Contentnea Creek Riparian Buffer Restoration - Phase 3



**Quadrat 14-3**



**Quadrat 14-4**



**Quadrat 15-1**



**Quadrat 15-2**



**Permanent Quadrat Photographs - 2008 - Little Contentnea Creek Riparian Buffer Restoration - Phase 3**



**Quadrat 15-3**



**Quadrat 15-4**



**Quadrat 16-1**



**Quadrat 16-2**



Permanent Quadrat Photographs - 2008 - Little Contentnea Creek Riparian Buffer Restoration - Phase 3



Quadrat 16-3



Quadrat 17-1



Quadrat 17-2



Quadrat 17-3



**Table 2. Plot 1-1. 2008 Monitoring Data - Little Contentnea Creek Riparian Buffer Restoration - Phase 3 - Greene County, NC.**

Species	Average Diameter (cm)	Average Height (cm)	Total Live Stems	Total Dead	Diameter (cm)	Height (cm)	Diameter (cm)	Height (cm)	Diameter (cm)	Height (cm)	Diameter (cm)	Height (cm)	Diameter (cm)	Height (cm)	Diameter (cm)	Height (cm)
<i>Fraxinus pennsylvanica</i>	0.70	53.00	1	0	0.7	53										
<i>Liriodendron tulipifera</i>			0	0												
<i>Nyssa biflora</i>	0.90	94.00	2	0	0.5	65	1.3	123								
<i>Platanus occidentalis</i>	0.67	51.33	3	0	0.6	42	0.7	42	0.7	70						
<i>Quercus falcata</i>			0	0												
<i>Quercus lyrata</i>			0	0												
<i>Quercus nigra</i>			0	0												
<i>Quercus michauxii</i>			0	0												
<i>Quercus phellos</i>	1.35	93.00	2	0	2	105	0.7	81								
<i>Quercus rubra</i>			0	0												
<i>Quercus virginiana</i>			0	0												
<i>Quercus spp.</i>			0	0												
<i>Taxodium distichum</i>	1.90	171.33	3	0	3.8	255	0.4	153	1.5	106						
<b>Total planted stems per plot</b>			<b>11</b>	<b>0</b>												
<b>Total planted stems per acre</b>			<b>445.2</b>													

**Planted and volunteer stems per acre**

**566.6**



**Table 3. Plot 1-2. 2008 Monitoring Data - Little Contentnea Creek Riparian Buffer Restoration - Phase 3 - Greene County, NC.**

Species	Average Diameter (cm)	Average Height (cm)	Total Live Stems	Total Dead	Diameter (cm)	Height (cm)	Diameter (cm)	Height (cm)	Diameter (cm)	Height (cm)	Diameter (cm)	Height (cm)	Diameter (cm)	Height (cm)	Diameter (cm)	Height (cm)
<i>Fraxinus pennsylvanica</i>	0.80	48.20	5	0	0.7	55	0.7	45	0.7	30	0.9	48	1	63		
<i>Liriodendron tulipifera</i>			0	0												
<i>Nyssa biflora</i>			0	0												
<i>Platanus occidentalis</i>			0	0												
<i>Quercus falcata</i>			0	0												
<i>Quercus lyrata</i>			0	0												
<i>Quercus nigra</i>	1.00	65.00	2	0	1.2	85	0.8	45								
<i>Quercus michauxii</i>			0	0												
<i>Quercus phellos</i>	1.00	77.00	2	0	1.2	64	0.8	90								
<i>Quercus rubra</i>			0	0												
<i>Quercus virginiana</i>			0	0												
<i>Quercus spp.</i>			0	0												
<i>Taxodium distichum</i>	1.55	132.00	2	0	0.2	142	2.9	122								
<b>Total planted stems per plot</b>			<b>11</b>	<b>0</b>												
<b>Total planted stems per acre</b>			<b>445.2</b>													

Planted and volunteer stems per acre

445.2



**Table 4. Plot 1-3. 2008 Monitoring Data - Little Contentnea Creek Riparian Buffer Restoration - Phase 3 - Greene County, NC.**

Species	Average Diameter (cm)	Average Height (cm)	Total Live Stems	Total Dead	Diameter (cm)	Height (cm)	Diameter (cm)	Height (cm)	Diameter (cm)	Height (cm)	Diameter (cm)	Height (cm)	Diameter (cm)	Height (cm)	Diameter (cm)	Height (cm)
<i>Fraxinus pennsylvanica</i>	1.10	67.33	3	0	0.9	64	1.2	77	1.2	61						
<i>Liriodendron tulipifera</i>	0.60	27.00	1	1	0.6	27	d	d								
<i>Nyssa biflora</i>			0	0												
<i>Platanus occidentalis</i>			0	0												
<i>Quercus falcata</i>			0	0												
<i>Quercus lyrata</i>			0	0												
<i>Quercus nigra</i>	0.72	71.80	5	0	0.8	75	0.9	59	0.8	89	0.5	62	0.6	74		
<i>Quercus michauxii</i>			0	0												
<i>Quercus phellos</i>	0.80	70.00	1	0	0.8	70										
<i>Quercus rubra</i>			0	0												
<i>Quercus virginiana</i>			0	0												
<i>Quercus spp.</i>			0	0												
<i>Taxodium distichum</i>			0	0												
<b>Total planted stems per plot</b>			<b>10</b>	<b>1</b>												
<b>Total planted stems per acre</b>			<b>404.7</b>													

Planted and volunteer stems per acre

404.7





**Table 5. Plot 2-1. 2008 Monitoring Data - Little Contentnea Creek Riparian Buffer Restoration - Phase 3 - Greene County, NC.**

Species	Average Diameter (cm)	Average Height (cm)	Total Live Stems	Total Dead	Diameter (cm)	Height (cm)	Diameter (cm)	Height (cm)	Diameter (cm)	Height (cm)	Diameter (cm)	Height (cm)	Diameter (cm)	Height (cm)	Diameter (cm)	Height (cm)
<i>Fraxinus pennsylvanica</i>	0.77	43.67	3	1	1.1	53	0.7	50	0.5	28	d	d				
<i>Liriodendron tulipifera</i>			0	0												
<i>Nyssa biflora</i>			0	0												
<i>Platanus occidentalis</i>			0	0												
<i>Quercus falcata</i>			0	0												
<i>Quercus lyrata</i>			0	0												
<i>Quercus nigra</i>	0.40	45.00	1	0	0.4	45										
<i>Quercus michauxii</i>			0	0												
<i>Quercus phellos</i>	0.60	48.00	2	0	0.5	44	0.7	52								
<i>Quercus rubra</i>			0	0												
<i>Quercus virginiana</i>			0	0												
<i>Quercus spp.</i>			0	0												
<i>Taxodium distichum</i>	0.60	165.00	1	0	0.6	165										
<b>Total planted stems per plot</b>			<b>7</b>	<b>1</b>												
<b>Total planted stems per acre</b>			<b>283.3</b>													

**Planted and volunteer stems per acre**

**283.3**



**Table 6. Plot 2-2. 2008 Monitoring Data - Little Contentnea Creek Riparian Buffer Restoration - Phase 3 - Greene County, NC.**

Species	Average Diameter (cm)	Average Height (cm)	Total Live Stems	Total Dead	Diameter (cm)	Height (cm)	Diameter (cm)	Height (cm)	Diameter (cm)	Height (cm)	Diameter (cm)	Height (cm)	Diameter (cm)	Height (cm)	Diameter (cm)	Height (cm)
<i>Fraxinus pennsylvanica</i>	0.53	41.33	3	0	0.6	49	0.2	14	0.8	61						
<i>Liriodendron tulipifera</i>			0	0												
<i>Nyssa biflora</i>			0	0												
<i>Platanus occidentalis</i>	3.95	340.00	2	1	4.4	480	3.5	200	d	d						
<i>Quercus falcata</i>			0	0												
<i>Quercus lyrata</i>			0	0												
<i>Quercus nigra</i>			0	0												
<i>Quercus michauxii</i>			0	0												
<i>Quercus phellos</i>			0	0												
<i>Quercus rubra</i>			0	0												
<i>Quercus virginiana</i>			0	0												
<i>Quercus spp.</i>			0	0												
<i>Taxodium distichum</i>	1.00	84.00	1	0	1	84										
<b>Total planted stems per plot</b>			<b>6</b>	<b>1</b>												
<b>Total planted stems per acre</b>			<b>242.8</b>													

**Planted and volunteer stems per acre**

**971.3**



**Table 7. Plot 2-3. 2008 Monitoring Data - Little Contentnea Creek Riparian Buffer Restoration - Phase 3 - Greene County, NC.**

Species	Average Diameter (cm)	Average Height (cm)	Total Live Stems	Total Dead	Diameter (cm)	Height (cm)	Diameter (cm)	Height (cm)	Diameter (cm)	Height (cm)	Diameter (cm)	Height (cm)	Diameter (cm)	Height (cm)	Diameter (cm)	Height (cm)
<i>Fraxinus pennsylvanica</i>	0.73	46.11	9	0	0.7	36	0.5	48	0.7	58	0.7	51	0.8	37	0.8	56
<i>Liriodendron tulipifera</i>	0.50	40.00	1	1	d	d	0.5	40								
<i>Nyssa biflora</i>			0	0												
<i>Platanus occidentalis</i>			0	0												
<i>Quercus falcata</i>			0	0												
<i>Quercus lyrata</i>			0	0												
<i>Quercus nigra</i>	1.07	65.67	3	0	1.3	98	1.2	75	0.7	24						
<i>Quercus michauxii</i>			0	0												
<i>Quercus phellos</i>	1.05	71.00	2	0	0.6	50	1.5	92								
<i>Quercus rubra</i>			0	0												
<i>Quercus virginiana</i>			0	0												
<i>Quercus spp.</i>			0	0												
<i>Taxodium distichum</i>			0	0												
<b>Total planted stems per plot</b>			<b>15</b>	<b>1</b>												
<b>Total planted stems per acre</b>			<b>607.1</b>													

Planted and volunteer stems per acre

647.5



**Table 7. Plot 2-3. 2008 Monitoring Data - Little Contentnea Creek Riparian Buffer Restoration - Phase 3 - Greene County, NC.**

Species	Diameter (cm)	Height (cm)	Diameter (cm)	Height (cm)	Diameter (cm)	Height (cm)
<i>Fraxinus pennsylvanica</i>	0.4	17	0.7	56	1.3	56
<i>Liriodendron tulipifera</i>						
<i>Nyssa biflora</i>						
<i>Platanus occidentalis</i>						
<i>Quercus falcata</i>						
<i>Quercus lyrata</i>						
<i>Quercus nigra</i>						
<i>Quercus michauxii</i>						
<i>Quercus phellos</i>						
<i>Quercus rubra</i>						
<i>Quercus virginiana</i>						
<i>Quercus spp.</i>						
<i>Taxodium distichum</i>						
<b>Total planted stems per plot</b>						
<b>Total planted stems per acre</b>						

**Planted and volunteer stems per acre**

**Table 8. Plot 2-4. 2008 Monitoring Data - Little Contentnea Creek Riparian Buffer Restoration - Phase 3 - Greene County, NC.**

Species	Average Diameter (cm)	Average Height (cm)	Total Live Stems	Total Dead	Diameter (cm)	Height (cm)	Diameter (cm)	Height (cm)	Diameter (cm)	Height (cm)	Diameter (cm)	Height (cm)	Diameter (cm)	Height (cm)	Diameter (cm)	Height (cm)
<i>Fraxinus pennsylvanica</i>	0.40	53.00	1	0	0.4	53										
<i>Liriodendron tulipifera</i>			0	1	d	d										
<i>Nyssa biflora</i>			0	0												
<i>Platanus occidentalis</i>	6.10	480.00	1	0	6.1	480										
<i>Quercus falcata</i>			0	0												
<i>Quercus lyrata</i>			0	0												
<i>Quercus nigra</i>	0.70	185.00	1	0	0.7	185										
<i>Quercus michauxii</i>			0	0												
<i>Quercus phellos</i>			0	0												
<i>Quercus rubra</i>			0	0												
<i>Quercus virginiana</i>			0	0												
<i>Quercus spp.</i>			0	0												
<i>Taxodium distichum</i>	1.18	152.25	4	1	0.6	156	1.1	66	d	d	1.6	192	1.4	195		
<b>Total planted stems per plot</b>			<b>7</b>	<b>2</b>												
<b>Total planted stems per acre</b>			<b>283.3</b>													

Planted and volunteer stems per acre

283.3





**Table 9. Plot 3-1. 2008 Monitoring Data - Little Contentnea Creek Riparian Buffer Restoration - Phase 3 - Greene County, NC.**

Species	Average Diameter (cm)	Average Height (cm)	Total Live Stems	Total Dead	Diameter (cm)	Height (cm)	Diameter (cm)	Height (cm)	Diameter (cm)	Height (cm)	Diameter (cm)	Height (cm)	Diameter (cm)	Height (cm)	Diameter (cm)	Height (cm)
<i>Fraxinus pennsylvanica</i>			0	0												
<i>Liriodendron tulipifera</i>	0.50	42.00	1	1	d	d	0.5	42								
<i>Nyssa biflora</i>			0	0												
<i>Platanus occidentalis</i>	6.33	608.33	3	0	6.8	650	5.8	600	6.4	575						
<i>Quercus falcata</i>			0	0												
<i>Quercus lyrata</i>			0	0												
<i>Quercus nigra</i>	0.20	149.00	1	0	0.2	149										
<i>Quercus michauxii</i>			0	0												
<i>Quercus phellos</i>			0	0												
<i>Quercus rubra</i>			0	0												
<i>Quercus virginiana</i>			0	0												
<i>Quercus spp.</i>			0	0												
<i>Taxodium distichum</i>	1.68	189.80	5	0	2.9	277	1.4	127	2	240	0.5	65	1.6	240		
<b>Total planted stems per plot</b>			<b>10</b>	<b>1</b>												
<b>Total planted stems per acre</b>			<b>404.7</b>													

Planted and volunteer stems per acre

**809.4**



**Table 10. Plot 3-2. 2008 Monitoring Data - Little Contentnea Creek Riparian Buffer Restoration - Phase 3 - Greene County, NC.**

Species	Average Diameter (cm)	Average Height (cm)	Total Live Stems	Total Dead	Diameter (cm)	Height (cm)	Diameter (cm)	Height (cm)	Diameter (cm)	Height (cm)	Diameter (cm)	Height (cm)	Diameter (cm)	Height (cm)	Diameter (cm)	Height (cm)
<i>Fraxinus pennsylvanica</i>	0.76	55.14	7	0	0.7	65	0.8	59	1	75	0.7	45	0.8	58	0.8	42
<i>Liriodendron tulipifera</i>			0	0												
<i>Nyssa biflora</i>			0	0												
<i>Platanus occidentalis</i>	0.70	70.00	1	0	0.7	70										
<i>Quercus falcata</i>			0	0												
<i>Quercus lyrata</i>			0	0												
<i>Quercus nigra</i>	0.93	79.67	3	0	0.9	55	1.1	101	0.8	83						
<i>Quercus michauxii</i>			0	0												
<i>Quercus phellos</i>			0	0												
<i>Quercus rubra</i>			0	0												
<i>Quercus virginiana</i>			0	0												
<i>Quercus spp.</i>			0	0												
<i>Taxodium distichum</i>	1.10	132.00	3	0	1.8	123	0.8	203	0.7	70						
<b>Total planted stems per plot</b>			<b>14</b>	<b>0</b>												
<b>Total planted stems per acre</b>			<b>566.6</b>													

Planted and volunteer stems per acre

12,829.0



**Table 11. Plot 3-3. 2008 Monitoring Data - Little Contentnea Creek Riparian Buffer Restoration - Phase 3 - Greene County, NC.**

Species	Average Diameter (cm)	Average Height (cm)	Total Live Stems	Total Dead	Diameter (cm)	Height (cm)	Diameter (cm)	Height (cm)	Diameter (cm)	Height (cm)	Diameter (cm)	Height (cm)	Diameter (cm)	Height (cm)	Diameter (cm)	Height (cm)
<i>Fraxinus pennsylvanica</i>	0.81	66.67	12	0	0.7	40	0.7	74	1.1	73	1.1	75	0.9	71	0.9	92
<i>Liriodendron tulipifera</i>			0	0												
<i>Nyssa biflora</i>			0	1	d	d										
<i>Platanus occidentalis</i>	0.70	62.67	3	0	0.7	25	1.1	131	0.3	32						
<i>Quercus falcata</i>			0	0												
<i>Quercus lyrata</i>			0	0												
<i>Quercus nigra</i>	0.35	89.50	2	0	0.5	34	0.2	145								
<i>Quercus michauxii</i>			0	0												
<i>Quercus phellos</i>			0	0												
<i>Quercus rubra</i>			0	0												
<i>Quercus virginiana</i>			0	0												
<i>Quercus spp.</i>			0	0												
<i>Taxodium distichum</i>	0.62	160.00	6	0	0.8	178	0.9	98	0.8	207	0.3	160	0.7	172	0.2	145
<b>Total planted stems per plot</b>			<b>23</b>	<b>1</b>												
<b>Total planted stems per acre</b>			<b>930.8</b>													

Planted and volunteer stems per acre

**9,793.7**







**Table 12. Plot 4-1. 2008 Monitoring Data - Little Contentnea Creek Riparian Buffer Restoration - Phase 3 - Greene County, NC.**

Species	Average Diameter (cm)	Average Height (cm)	Total Live Stems	Total Dead	Diameter (cm)	Height (cm)	Diameter (cm)	Height (cm)	Diameter (cm)	Height (cm)	Diameter (cm)	Height (cm)	Diameter (cm)	Height (cm)	Diameter (cm)	Height (cm)
<i>Fraxinus pennsylvanica</i>	0.80	39.33	3	0	1	44	0.8	48	0.6	26						
<i>Liriodendron tulipifera</i>			0	0												
<i>Nyssa biflora</i>			0	0												
<i>Platanus occidentalis</i>	1.43	245.75	4	0	2.5	354	1.8	266	0.7	181	0.7	182				
<i>Quercus falcata</i>			0	0												
<i>Quercus lyrata</i>			0	0												
<i>Quercus nigra</i>			0	0												
<i>Quercus michauxii</i>			0	0												
<i>Quercus phellos</i>	0.80	87.00	1	0	0.8	87										
<i>Quercus rubra</i>			0	0												
<i>Quercus virginiana</i>			0	0												
<i>Quercus spp.</i>			0	0												
<i>Taxodium distichum</i>	0.88	111.33	6	0	0.4	152	1	105	0.8	67	0.8	87	2	109	0.3	148
<b>Total planted stems per plot</b>			<b>14</b>	<b>0</b>												
<b>Total planted stems per acre</b>			<b>566.6</b>													

Planted and volunteer stems per acre

2,266.3





**Table 13. Plot 4-2. 2008 Monitoring Data - Little Contentnea Creek Riparian Buffer Restoration - Phase 3 - Greene County, NC.**

Species	Average Diameter (cm)	Average Height (cm)	Total Live Stems	Total Dead	Diameter (cm)	Height (cm)	Diameter (cm)	Height (cm)	Diameter (cm)	Height (cm)	Diameter (cm)	Height (cm)	Diameter (cm)	Height (cm)	Diameter (cm)	Height (cm)
<i>Fraxinus pennsylvanica</i>	0.70	17.00	2	1	0.1	14	1.3	20	d	d						
<i>Liriodendron tulipifera</i>			0	0												
<i>Nyssa biflora</i>			0	0												
<i>Platanus occidentalis</i>	2.32	313.20	5	0	2	273	2.4	330	2.2	313	1.9	280	3.1	370		
<i>Quercus falcata</i>			0	0												
<i>Quercus lyrata</i>			0	0												
<i>Quercus nigra</i>			0	0												
<i>Quercus michauxii</i>			0	0												
<i>Quercus phellos</i>			0	0												
<i>Quercus rubra</i>			0	0												
<i>Quercus virginiana</i>			0	0												
<i>Quercus spp.</i>			0	0												
<i>Taxodium distichum</i>			0	0												
<b>Total planted stems per plot</b>			<b>7</b>	<b>1</b>												
<b>Total planted stems per acre</b>			<b>283.3</b>													

Planted and volunteer stems per acre

768.9





**Table 14. Plot 4-3. 2008 Monitoring Data - Little Contentnea Creek Riparian Buffer Restoration - Phase 3 - Greene County, NC.**

Species	Average Diameter (cm)	Average Height (cm)	Total Live Stems	Total Dead	Diameter (cm)	Height (cm)	Diameter (cm)	Height (cm)	Diameter (cm)	Height (cm)	Diameter (cm)	Height (cm)	Diameter (cm)	Height (cm)	Diameter (cm)	Height (cm)
<i>Fraxinus pennsylvanica</i>			0	0												
<i>Liriodendron tulipifera</i>			0	0												
<i>Nyssa biflora</i>			0	0												
<i>Platanus occidentalis</i>	1.13	195.50	8	0	1	196	1.1	183	1.8	268	2.3	315	0.7	175	0.8	170
<i>Quercus falcata</i>			0	0												
<i>Quercus lyrata</i>			0	0												
<i>Quercus nigra</i>			0	0												
<i>Quercus michauxii</i>			0	0												
<i>Quercus phellos</i>			0	0												
<i>Quercus rubra</i>			0	0												
<i>Quercus virginiana</i>			0	0												
<i>Quercus spp.</i>			0	0												
<i>Taxodium distichum</i>	0.90	25.00	1	0	0.9	25										
<b>Total planted stems per plot</b>			<b>9</b>	<b>0</b>												
<b>Total planted stems per acre</b>			<b>364.2</b>													

**Planted and volunteer stems per acre**

**445.2**





**Table 14. Plot 4-3. 2008 Monitoring Data - Little Contentnea Creek Riparian Buffer Restoration - Phase 3 - Greene County, NC.**

Species	Diameter (cm)	Height (cm)	Diameter (cm)	Height (cm)
<i>Fraxinus pennsylvanica</i>				
<i>Liriodendron tulipifera</i>				
<i>Nyssa biflora</i>				
<i>Platanus occidentalis</i>	0.5	54	0.8	203
<i>Quercus falcata</i>				
<i>Quercus lyrata</i>				
<i>Quercus nigra</i>				
<i>Quercus michauxii</i>				
<i>Quercus phellos</i>				
<i>Quercus rubra</i>				
<i>Quercus virginiana</i>				
<i>Quercus spp.</i>				
<i>Taxodium distichum</i>				
<b>Total planted stems per plot</b>				
<b>Total planted stems per acre</b>				

**Planted and volunteer stems per acre**

**Table 15. Plot 5-1. 2008 Monitoring Data - Little Contentnea Creek Riparian Buffer Restoration - Phase 3 - Greene County, NC.**

Species	Average Diameter (cm)	Average Height (cm)	Total Live Stems	Total Dead	Diameter (cm)	Height (cm)	Diameter (cm)	Height (cm)	Diameter (cm)	Height (cm)	Diameter (cm)	Height (cm)	Diameter (cm)	Height (cm)	Diameter (cm)	Height (cm)
<i>Fraxinus pennsylvanica</i>	0.60	30.00	2	0	0.7	35	0.5	25								
<i>Liriodendron tulipifera</i>			0	0												
<i>Nyssa biflora</i>	0.60	14.00	1	1	d	d	0.6	14								
<i>Platanus occidentalis</i>			0	0												
<i>Quercus falcata</i>			0	0												
<i>Quercus lyrata</i>			0	0												
<i>Quercus nigra</i>	0.90	49.50	2	0	1	32	0.8	67								
<i>Quercus michauxii</i>			0	0												
<i>Quercus phellos</i>	0.73	113.00	3	0	0.9	70	0.6	66	0.7	203						
<i>Quercus rubra</i>			0	0												
<i>Quercus virginiana</i>			0	0												
<i>Quercus spp.</i>			0	0												
<i>Taxodium distichum</i>			0	0												
<b>Total planted stems per plot</b>			<b>8</b>	<b>1</b>												
<b>Total planted stems per acre</b>			<b>323.8</b>													

Planted and volunteer stems per acre

3,035.3





**Table 16. Plot 5-2. 2008 Monitoring Data - Little Contentnea Creek Riparian Buffer Restoration - Phase 3 - Greene County, NC.**

Species	Average Diameter (cm)	Average Height (cm)	Total Live Stems	Total Dead	Diameter (cm)	Height (cm)	Diameter (cm)	Height (cm)	Diameter (cm)	Height (cm)	Diameter (cm)	Height (cm)	Diameter (cm)	Height (cm)	Diameter (cm)	Height (cm)
<i>Fraxinus pennsylvanica</i>	0.66	39.00	7	0	0.5	25	0.4	31	0.7	53	0.9	65	0.6	58	0.5	31
<i>Liriodendron tulipifera</i>			0	0												
<i>Nyssa biflora</i>			0	0												
<i>Platanus occidentalis</i>	1.97	289.00	3	0	3.6	400	0.8	195	1.5	272						
<i>Quercus falcata</i>			0	0												
<i>Quercus lyrata</i>			0	0												
<i>Quercus nigra</i>	0.60	52.00	1	0	0.6	52										
<i>Quercus michauxii</i>			0	0												
<i>Quercus phellos</i>			0	0												
<i>Quercus rubra</i>			0	0												
<i>Quercus virginiana</i>			0	0												
<i>Quercus spp.</i>			0	0												
<i>Taxodium distichum</i>			0	0												
<b>Total planted stems per plot</b>			<b>11</b>	<b>0</b>												
<b>Total planted stems per acre</b>			<b>445.2</b>													

Planted and volunteer stems per acre

1,578.3



**Table 16. Plot 5-2. 2008 Monitoring Data - Little Contentnea Creek Riparian Buffer Restoration - Phase 3 - Greene County, NC.**

Species	Diameter (cm)	Height (cm)
<i>Fraxinus pennsylvanica</i>	1	10
<i>Liriodendron tulipifera</i>		
<i>Nyssa biflora</i>		
<i>Platanus occidentalis</i>		
<i>Quercus falcata</i>		
<i>Quercus lyrata</i>		
<i>Quercus nigra</i>		
<i>Quercus michauxii</i>		
<i>Quercus phellos</i>		
<i>Quercus rubra</i>		
<i>Quercus virginiana</i>		
<i>Quercus spp.</i>		
<i>Taxodium distichum</i>		
<b>Total planted stems per plot</b>		
<b>Total planted stems per acre</b>		

**Planted and volunteer stems per acre**



**Table 17. Plot 5-3. 2008 Monitoring Data - Little Contentnea Creek Riparian Buffer Restoration - Phase 3 - Greene County, NC.**

Species	Average Diameter (cm)	Average Height (cm)	Total Live Stems	Total Dead	Diameter (cm)	Height (cm)	Diameter (cm)	Height (cm)	Diameter (cm)	Height (cm)	Diameter (cm)	Height (cm)	Diameter (cm)	Height (cm)	Diameter (cm)	Height (cm)
<i>Fraxinus pennsylvanica</i>	0.58	37.25	4	1	0.8	51	d	d	0.5	32	0.8	51	0.2	15		
<i>Liriodendron tulipifera</i>			0	0												
<i>Nyssa biflora</i>	0.15	26.00	2	0	0.2	27	0.1	25								
<i>Platanus occidentalis</i>	1.20	109.75	4	0	1.4	108	1.8	135	1.3	59	0.3	137				
<i>Quercus falcata</i>			0	0												
<i>Quercus lyrata</i>			0	0												
<i>Quercus nigra</i>			0	0												
<i>Quercus michauxii</i>			0	0												
<i>Quercus phellos</i>			0	0												
<i>Quercus rubra</i>			0	0												
<i>Quercus virginiana</i>			0	0												
<i>Quercus spp.</i>			0	0												
<i>Taxodium distichum</i>			0	0												
<b>Total planted stems per plot</b>			<b>10</b>	<b>1</b>												
<b>Total planted stems per acre</b>			<b>404.7</b>													

Planted and volunteer stems per acre

1,416.5



**Table 18. Plot 6-1. 2008 Monitoring Data - Little Contentnea Creek Riparian Buffer Restoration - Phase 3 - Greene County, NC.**

Species	Average Diameter (cm)	Average Height (cm)	Total Live Stems	Total Dead	Diameter (cm)	Height (cm)	Diameter (cm)	Height (cm)	Diameter (cm)	Height (cm)	Diameter (cm)	Height (cm)	Diameter (cm)	Height (cm)	Diameter (cm)	Height (cm)
<i>Fraxinus pennsylvanica</i>	0.40	18.00	1	0	0.4	18										
<i>Liriodendron tulipifera</i>			0	0												
<i>Nyssa biflora</i>	0.15	21.00	4	0	0.1	15	0.1	18	0.3	28	0.1	23				
<i>Platanus occidentalis</i>	0.77	145.00	3	0	0.9	202	0.4	36	1	197						
<i>Quercus falcata</i>			0	0												
<i>Quercus lyrata</i>			0	0												
<i>Quercus nigra</i>	0.50	52.33	3	0	0.5	48	0.8	70	0.2	39						
<i>Quercus michauxii</i>			0	0												
<i>Quercus phellos</i>			0	0												
<i>Quercus rubra</i>			0	0												
<i>Quercus virginiana</i>			0	0												
<i>Quercus spp.</i>			0	0												
<i>Taxodium distichum</i>	0.70	96.00	1	0	0.7	96										
<b>Total planted stems per plot</b>			<b>12</b>	<b>0</b>												
<b>Total planted stems per acre</b>			<b>485.6</b>													

Planted and volunteer stems per acre

1,376.0





**Table 19. Plot 6-2. 2008 Monitoring Data - Little Contentnea Creek Riparian Buffer Restoration - Phase 3 - Greene County, NC.**

Species	Average Diameter (cm)	Average Height (cm)	Total Live Stems	Total Dead	Diameter (cm)	Height (cm)	Diameter (cm)	Height (cm)	Diameter (cm)	Height (cm)	Diameter (cm)	Height (cm)	Diameter (cm)	Height (cm)	Diameter (cm)	Height (cm)
<i>Fraxinus pennsylvanica</i>	0.73	54.86	7	0	0.2	20	1.2	58	0.6	62	1	84	1	73	0.9	62
<i>Liriodendron tulipifera</i>			0	0												
<i>Nyssa biflora</i>	0.60	24.00	1	0	0.6	24										
<i>Platanus occidentalis</i>	3.10	383.00	3	0	3.2	363	3	391	3.1	395						
<i>Quercus falcata</i>			0	0												
<i>Quercus lyrata</i>			0	0												
<i>Quercus nigra</i>	1.10	72.00	1	0	1.1	72										
<i>Quercus michauxii</i>			0	0												
<i>Quercus phellos</i>			0	0												
<i>Quercus rubra</i>			0	0												
<i>Quercus virginiana</i>			0	0												
<i>Quercus spp.</i>			0	0												
<i>Taxodium distichum</i>	0.83	108.00	3	0	1	81	1.3	95	0.2	148						
<b>Total planted stems per plot</b>			<b>15</b>	<b>0</b>												
<b>Total planted stems per acre</b>			<b>607.1</b>													

Planted and volunteer stems per acre

2,104.4





**Table 20. Plot 6-3. 2008 Monitoring Data - Little Contentnea Creek Riparian Buffer Restoration - Phase 3 - Greene County, NC.**

Species	Average Diameter (cm)	Average Height (cm)	Total Live Stems	Total Dead	Diameter (cm)	Height (cm)	Diameter (cm)	Height (cm)	Diameter (cm)	Height (cm)	Diameter (cm)	Height (cm)	Diameter (cm)	Height (cm)	Diameter (cm)	Height (cm)
<i>Fraxinus pennsylvanica</i>	0.78	48.40	5	0	1	64	0.5	56	0.9	53	0.8	34	0.7	35		
<i>Liriodendron tulipifera</i>			0	0												
<i>Nyssa biflora</i>	0.50	56.00	1	0	0.5	56										
<i>Platanus occidentalis</i>			0	0												
<i>Quercus falcata</i>			0	0												
<i>Quercus lyrata</i>			0	0												
<i>Quercus nigra</i>	0.80	55.00	2	0	0.9	72	0.7	38								
<i>Quercus michauxii</i>			0	0												
<i>Quercus phellos</i>	1.10	34.00	1	0	1.1	34										
<i>Quercus rubra</i>			0	0												
<i>Quercus virginiana</i>			0	0												
<i>Quercus spp.</i>			0	0												
<i>Taxodium distichum</i>	0.83	108.67	3	0	1.5	109	0.1	138	0.9	79						
<b>Total planted stems per plot</b>			<b>12</b>	<b>0</b>												
<b>Total planted stems per acre</b>			<b>485.6</b>													

Planted and volunteer stems per acre

1,133.2



**Table 21. Plot 6-4. 2008 Monitoring Data - Little Contentnea Creek Riparian Buffer Restoration - Phase 3 - Greene County, NC.**

Species	Average Diameter (cm)	Average Height (cm)	Total Live Stems	Total Dead	Diameter (cm)	Height (cm)	Diameter (cm)	Height (cm)	Diameter (cm)	Height (cm)	Diameter (cm)	Height (cm)	Diameter (cm)	Height (cm)	Diameter (cm)	Height (cm)
<i>Fraxinus pennsylvanica</i>	0.84	51.60	5	0	1	50	1.1	63	0.7	60	0.7	34	0.7	51		
<i>Liriodendron tulipifera</i>			0	0												
<i>Nyssa biflora</i>			0	0												
<i>Platanus occidentalis</i>	2.35	314.00	2	0	2.2	315	2.5	313								
<i>Quercus falcata</i>			0	0												
<i>Quercus lyrata</i>			0	0												
<i>Quercus nigra</i>	0.40	40.00	1	0	0.4	40										
<i>Quercus michauxii</i>			0	0												
<i>Quercus phellos</i>			0	0												
<i>Quercus rubra</i>			0	0												
<i>Quercus virginiana</i>			0	0												
<i>Quercus spp.</i>			0	0												
<i>Taxodium distichum</i>	1.10	176.00	1	0	1.1	176										
<b>Total planted stems per plot</b>			<b>9</b>	<b>0</b>												
<b>Total planted stems per acre</b>			<b>364.2</b>													

Planted and volunteer stems per acre

2,994.8





**Table 22. Plot 7-1. 2008 Monitoring Data - Little Contentnea Creek Riparian Buffer Restoration - Phase 3 - Greene County, NC.**

Species	Average Diameter (cm)	Average Height (cm)	Total Live Stems	Total Dead	Diameter (cm)	Height (cm)	Diameter (cm)	Height (cm)	Diameter (cm)	Height (cm)	Diameter (cm)	Height (cm)	Diameter (cm)	Height (cm)	Diameter (cm)	Height (cm)
<i>Fraxinus pennsylvanica</i>	0.30	30.00	1	0	0.3	30										
<i>Liriodendron tulipifera</i>			0	0												
<i>Nyssa biflora</i>	0.50	50.00	1	0	0.5	50										
<i>Platanus occidentalis</i>			0	0												
<i>Quercus falcata</i>			0	0												
<i>Quercus lyrata</i>			0	0												
<i>Quercus nigra</i>			0	0												
<i>Quercus michauxii</i>			0	0												
<i>Quercus phellos</i>			0	0												
<i>Quercus rubra</i>			0	0												
<i>Quercus virginiana</i>			0	0												
<i>Quercus spp.</i>			0	1	d	d										
<i>Taxodium distichum</i>			0	0												
<b>Total planted stems per plot</b>			<b>2</b>	<b>1</b>												
<b>Total planted stems per acre</b>			<b>80.9</b>													

Planted and volunteer stems per acre

2,064.0





**Table 23. Plot 7-2. 2008 Monitoring Data - Little Contentnea Creek Riparian Buffer Restoration - Phase 3 - Greene County, NC.**

Species	Average Diameter (cm)	Average Height (cm)	Total Live Stems	Total Dead	Diameter (cm)	Height (cm)	Diameter (cm)	Height (cm)	Diameter (cm)	Height (cm)	Diameter (cm)	Height (cm)	Diameter (cm)	Height (cm)	Diameter (cm)	Height (cm)
<i>Fraxinus pennsylvanica</i>			0	0												
<i>Liriodendron tulipifera</i>			0	1	d	d										
<i>Nyssa biflora</i>			0	0												
<i>Platanus occidentalis</i>	4.60	460.71	7	0	4.5	450	2.3	325	5	460	3.8	430	5.8	550	6.2	580
<i>Quercus falcata</i>			0	0												
<i>Quercus lyrata</i>			0	0												
<i>Quercus nigra</i>			0	0												
<i>Quercus michauxii</i>			0	0												
<i>Quercus phellos</i>			0	0												
<i>Quercus rubra</i>			0	0												
<i>Quercus virginiana</i>			0	0												
<i>Quercus spp.</i>			0	0												
<i>Taxodium distichum</i>			0	0												
<b>Total planted stems per plot</b>			<b>7</b>	<b>1</b>												
<b>Total planted stems per acre</b>			<b>283.3</b>													

Planted and volunteer stems per acre

283.3



**Table 24. Plot 7-3. 2008 Monitoring Data - Little Contentnea Creek Riparian Buffer Restoration - Phase 3 - Greene County, NC.**

Species	Average Diameter (cm)	Average Height (cm)	Total Live Stems	Total Dead	Diameter (cm)	Height (cm)	Diameter (cm)	Height (cm)	Diameter (cm)	Height (cm)	Diameter (cm)	Height (cm)	Diameter (cm)	Height (cm)	Diameter (cm)	Height (cm)
<i>Fraxinus pennsylvanica</i>			0	0												
<i>Liriodendron tulipifera</i>			0	0												
<i>Nyssa biflora</i>			0	0												
<i>Platanus occidentalis</i>	3.44	374.71	7	0	5.4	430	0.7	195	3.8	430	1.7	245	4.6	500	2.4	303
<i>Quercus falcata</i>			0	0												
<i>Quercus lyrata</i>			0	0												
<i>Quercus nigra</i>			0	0												
<i>Quercus michauxii</i>			0	0												
<i>Quercus phellos</i>			0	0												
<i>Quercus rubra</i>			0	0												
<i>Quercus virginiana</i>			0	0												
<i>Quercus spp.</i>			0	0												
<i>Taxodium distichum</i>			0	0												
<b>Total planted stems per plot</b>			<b>7</b>	<b>0</b>												
<b>Total planted stems per acre</b>			<b>283.3</b>													

**Planted and volunteer stems per acre**

**404.7**





**Table 24. Plot 7-3. 2008 Monitoring Data - Little Contentnea Creek Riparian Buffer Restoration - Phase 3 - Greene County, NC.**

Species	Diameter (cm)	Height (cm)
<i>Fraxinus pennsylvanica</i>		
<i>Liriodendron tulipifera</i>		
<i>Nyssa biflora</i>		
<i>Platanus occidentalis</i>	5.5	520
<i>Quercus falcata</i>		
<i>Quercus lyrata</i>		
<i>Quercus nigra</i>		
<i>Quercus michauxii</i>		
<i>Quercus phellos</i>		
<i>Quercus rubra</i>		
<i>Quercus virginiana</i>		
<i>Quercus spp.</i>		
<i>Taxodium distichum</i>		
<b>Total planted stems per plot</b>		
<b>Total planted stems per acre</b>		

**Planted and volunteer stems per acre**

**Table 25. Plot 8-1. 2008 Monitoring Data - Little Contentnea Creek Riparian Buffer Restoration - Phase 3 - Greene County, NC.**

Species	Average Diameter (cm)	Average Height (cm)	Total Live Stems	Total Dead	Diameter (cm)	Height (cm)	Diameter (cm)	Height (cm)	Diameter (cm)	Height (cm)	Diameter (cm)	Height (cm)	Diameter (cm)	Height (cm)	Diameter (cm)	Height (cm)
<i>Fraxinus pennsylvanica</i>	0.37	47.33	3	1	d	d	0.3	43	0.4	48	0.4	51				
<i>Liriodendron tulipifera</i>	0.60	27.00	1	0	0.6	27										
<i>Nyssa biflora</i>			0	0												
<i>Platanus occidentalis</i>	4.33	472.25	8	0	2.9	345	5	600	2	273	4.5	500	7.5	680	3.1	400
<i>Quercus falcata</i>			0	0												
<i>Quercus lyrata</i>			0	0												
<i>Quercus nigra</i>			0	0												
<i>Quercus michauxii</i>			0	0												
<i>Quercus phellos</i>			0	0												
<i>Quercus rubra</i>			0	0												
<i>Quercus virginiana</i>			0	0												
<i>Quercus spp.</i>			0	0												
<i>Taxodium distichum</i>			0	0												
<b>Total planted stems per plot</b>			<b>12</b>	<b>1</b>												
<b>Total planted stems per acre</b>			<b>485.6</b>													

Planted and volunteer stems per acre

768.9



**Table 25. Plot 8-1. 2008 Monitoring Data - Little Contentnea Creek Riparian Buffer Restoration - Phase 3 - Greene County, NC.**

Species	Diameter (cm)	Height (cm)	Diameter (cm)	Height (cm)
<i>Fraxinus pennsylvanica</i>				
<i>Liriodendron tulipifera</i>				
<i>Nyssa biflora</i>				
<i>Platanus occidentalis</i>	4.6	480	5	500
<i>Quercus falcata</i>				
<i>Quercus lyrata</i>				
<i>Quercus nigra</i>				
<i>Quercus michauxii</i>				
<i>Quercus phellos</i>				
<i>Quercus rubra</i>				
<i>Quercus virginiana</i>				
<i>Quercus spp.</i>				
<i>Taxodium distichum</i>				
<b>Total planted stems per plot</b>				
<b>Total planted stems per acre</b>				

**Planted and volunteer stems per acre**



**Table 26. Plot 8-2. 2008 Monitoring Data - Little Contentnea Creek Riparian Buffer Restoration - Phase 3 - Greene County, NC.**

Species	Average Diameter (cm)	Average Height (cm)	Total Live Stems	Total Dead	Diameter (cm)	Height (cm)	Diameter (cm)	Height (cm)	Diameter (cm)	Height (cm)	Diameter (cm)	Height (cm)	Diameter (cm)	Height (cm)	Diameter (cm)	Height (cm)
<i>Fraxinus pennsylvanica</i>	0.70	45.00	1	5	0.7	45	d	d	d	d	d	d	d	d	d	d
<i>Liriodendron tulipifera</i>			0	2	d	d	d	d								
<i>Nyssa biflora</i>			0	0												
<i>Platanus occidentalis</i>	1.30	100.00	1	3	1.3	100	d	d	d	d	d	d				
<i>Quercus falcata</i>			0	0												
<i>Quercus lyrata</i>			0	0												
<i>Quercus nigra</i>	0.30	25.00	1	0	0.3	25										
<i>Quercus michauxii</i>			0	0												
<i>Quercus phellos</i>			0	0												
<i>Quercus rubra</i>			0	0												
<i>Quercus virginiana</i>			0	0												
<i>Quercus spp.</i>			0	0												
<i>Taxodium distichum</i>			0	0												
<b>Total planted stems per plot</b>			<b>3</b>	<b>10</b>												
<b>Total planted stems per acre</b>			<b>121.4</b>													

Planted and volunteer stems per acre

121.4



**Table 27. Plot 8-3. 2008 Monitoring Data - Little Contentnea Creek Riparian Buffer Restoration - Phase 3 - Greene County, NC.**

Species	Average Diameter (cm)	Average Height (cm)	Total Live Stems	Total Dead	Diameter (cm)	Height (cm)	Diameter (cm)	Height (cm)	Diameter (cm)	Height (cm)	Diameter (cm)	Height (cm)	Diameter (cm)	Height (cm)	Diameter (cm)	Height (cm)
<i>Fraxinus pennsylvanica</i>	0.73	31.33	3	0	1	34	0.8	25	0.4	35						
<i>Liriodendron tulipifera</i>			0	0												
<i>Nyssa biflora</i>			0	0												
<i>Platanus occidentalis</i>	3.95	385.00	2	0	3.3	340	4.6	430								
<i>Quercus falcata</i>			0	0												
<i>Quercus lyrata</i>			0	0												
<i>Quercus nigra</i>			0	0												
<i>Quercus michauxii</i>			0	0												
<i>Quercus phellos</i>			0	0												
<i>Quercus rubra</i>			0	0												
<i>Quercus virginiana</i>			0	0												
<i>Quercus spp.</i>			0	0												
<i>Taxodium distichum</i>	1.10	114.00	1	0	1.1	114										
<b>Total planted stems per plot</b>			<b>6</b>	<b>0</b>												
<b>Total planted stems per acre</b>			<b>242.8</b>													

Planted and volunteer stems per acre

364.2





**Table 28. Plot 8-4. 2008 Monitoring Data - Little Contentnea Creek Riparian Buffer Restoration - Phase 3 - Greene County, NC.**

Species	Average Diameter (cm)	Average Height (cm)	Total Live Stems	Total Dead	Diameter (cm)	Height (cm)	Diameter (cm)	Height (cm)	Diameter (cm)	Height (cm)	Diameter (cm)	Height (cm)	Diameter (cm)	Height (cm)	Diameter (cm)	Height (cm)
<i>Fraxinus pennsylvanica</i>	0.37	32.33	3	4	0.2	20	0.2	21	0.7	56	d	d	d	d	d	d
<i>Liriodendron tulipifera</i>			0	0												
<i>Nyssa biflora</i>			0	0												
<i>Platanus occidentalis</i>	2.93	343.33	3	1	2.6	362	d	d	2.9	302	3.3	366				
<i>Quercus falcata</i>			0	0												
<i>Quercus lyrata</i>			0	0												
<i>Quercus nigra</i>			0	0												
<i>Quercus michauxii</i>			0	0												
<i>Quercus phellos</i>			0	0												
<i>Quercus rubra</i>			0	0												
<i>Quercus virginiana</i>			0	0												
<i>Quercus spp.</i>			0	0												
<i>Taxodium distichum</i>			0	0												
<b>Total planted stems per plot</b>			<b>6</b>	<b>5</b>												
<b>Total planted stems per acre</b>			<b>242.8</b>													

Planted and volunteer stems per acre

242.8



**Table 29. Plot 9-1. 2008 Monitoring Data - Little Contentnea Creek Riparian Buffer Restoration - Phase 3 - Greene County, NC.**

Species	Average Diameter (cm)	Average Height (cm)	Total Live Stems	Total Dead	Diameter (cm)	Height (cm)	Diameter (cm)	Height (cm)	Diameter (cm)	Height (cm)	Diameter (cm)	Height (cm)	Diameter (cm)	Height (cm)	Diameter (cm)	Height (cm)
<i>Fraxinus pennsylvanica</i>	0.40	41.00	1	2	d	d	d	d	0.4	41						
<i>Liriodendron tulipifera</i>			0	0												
<i>Nyssa biflora</i>			0	0												
<i>Platanus occidentalis</i>	2.20	307.00	1	0	2.2	307										
<i>Quercus falcata</i>			0	0												
<i>Quercus lyrata</i>			0	0												
<i>Quercus nigra</i>	0.50	30.67	3	0		6	0.6	46	0.4	40						
<i>Quercus michauxii</i>			0	0												
<i>Quercus phellos</i>	0.57	32.50	4	0	0.6	36	0.5	43		7	0.6	44				
<i>Quercus rubra</i>			0	0												
<i>Quercus virginiana</i>			0	0												
<i>Quercus spp.</i>			0	6	d	d	d	d	d	d	d	d	d	d	d	d
<i>Taxodium distichum</i>			0	0												
<b>Total planted stems per plot</b>			<b>9</b>	<b>8</b>												
<b>Total planted stems per acre</b>			<b>364.2</b>													

Planted and volunteer stems per acre

404.7





**Table 30. Plot 9-2. 2008 Monitoring Data - Little Contentnea Creek Riparian Buffer Restoration - Phase 3 - Greene County, NC.**

Species	Average Diameter (cm)	Average Height (cm)	Total Live Stems	Total Dead	Diameter (cm)	Height (cm)	Diameter (cm)	Height (cm)	Diameter (cm)	Height (cm)	Diameter (cm)	Height (cm)	Diameter (cm)	Height (cm)	Diameter (cm)	Height (cm)
<i>Fraxinus pennsylvanica</i>	0.30	28.50	2	0	0.5	45	0.1	12								
<i>Liriodendron tulipifera</i>			0	4	d	d	d	d	d	d	d	d				
<i>Nyssa biflora</i>			0	0												
<i>Platanus occidentalis</i>	6.82	554.00	5	0	6.9	580	6.1	570	7.6	600	6.7	500	6.8	520		
<i>Quercus falcata</i>			0	0												
<i>Quercus lyrata</i>			0	0												
<i>Quercus nigra</i>	0.60	46.00	1	0	0.6	46										
<i>Quercus michauxii</i>			0	0												
<i>Quercus phellos</i>			0	0												
<i>Quercus rubra</i>			0	0												
<i>Quercus virginiana</i>			0	0												
<i>Quercus spp.</i>			0	0												
<i>Taxodium distichum</i>			0	0												
<b>Total planted stems per plot</b>			<b>8</b>	<b>4</b>												
<b>Total planted stems per acre</b>			<b>323.8</b>													

**Planted and volunteer stems per acre** 445.2



**Table 31. Plot 9-3. 2008 Monitoring Data - Little Contentnea Creek Riparian Buffer Restoration - Phase 3 - Greene County, NC.**

Species	Average Diameter (cm)	Average Height (cm)	Total Live Stems	Total Dead	Diameter (cm)	Height (cm)	Diameter (cm)	Height (cm)	Diameter (cm)	Height (cm)	Diameter (cm)	Height (cm)	Diameter (cm)	Height (cm)	Diameter (cm)	Height (cm)
<i>Fraxinus pennsylvanica</i>	0.10	19.00	1	4	d	d	d	d	d	d	d	d	0.1	19		
<i>Liriodendron tulipifera</i>			0	0												
<i>Nyssa biflora</i>			0	0												
<i>Platanus occidentalis</i>			0	0												
<i>Quercus falcata</i>			0	0												
<i>Quercus lyrata</i>			0	0												
<i>Quercus nigra</i>	0.45	38.00	2	0	0.2	15	0.7	61								
<i>Quercus michauxii</i>			0	0												
<i>Quercus phellos</i>	0.33	30.33	3	0	0.3	25	0.6	51	0.1	15						
<i>Quercus rubra</i>			0	0												
<i>Quercus virginiana</i>			0	0												
<i>Quercus spp.</i>			0	4	d	d	d	d	d	d	d	d				
<i>Taxodium distichum</i>			0	0												
<b>Total planted stems per plot</b>			<b>6</b>	<b>8</b>												
<b>Total planted stems per acre</b>			<b>242.8</b>													

Planted and volunteer stems per acre

607.1





**Table 32. Plot 9-4. 2008 Monitoring Data - Little Contentnea Creek Riparian Buffer Restoration - Phase 3 - Greene County, NC.**

Species	Average Diameter (cm)	Average Height (cm)	Total Live Stems	Total Dead	Diameter (cm)	Height (cm)	Diameter (cm)	Height (cm)	Diameter (cm)	Height (cm)	Diameter (cm)	Height (cm)	Diameter (cm)	Height (cm)	Diameter (cm)	Height (cm)
<i>Fraxinus pennsylvanica</i>	0.30	19.50	2	0	0.2	27	0.4	12								
<i>Liriodendron tulipifera</i>	0.30	13.00	1	0	0.3	13										
<i>Nyssa biflora</i>			0	0												
<i>Platanus occidentalis</i>	5.20	486.67	3	0	7.2	620	3.2	370	5.2	470						
<i>Quercus falcata</i>			0	0												
<i>Quercus lyrata</i>			0	0												
<i>Quercus nigra</i>			0	0												
<i>Quercus michauxii</i>			0	0												
<i>Quercus phellos</i>			0	0												
<i>Quercus rubra</i>			0	0												
<i>Quercus virginiana</i>			0	0												
<i>Quercus spp.</i>			0	0												
<i>Taxodium distichum</i>			0	0												
<b>Total planted stems per plot</b>			<b>6</b>	<b>0</b>												
<b>Total planted stems per acre</b>			<b>242.8</b>													

Planted and volunteer stems per acre

242.8



**Table 33. Plot 10-1. 2008 Monitoring Data - Little Contentnea Creek Riparian Buffer Restoration - Phase 3 - Greene County, NC.**

Species	Average Diameter (cm)	Average Height (cm)	Total Live Stems	Total Dead	Diameter (cm)	Height (cm)	Diameter (cm)	Height (cm)	Diameter (cm)	Height (cm)	Diameter (cm)	Height (cm)	Diameter (cm)	Height (cm)	Diameter (cm)	Height (cm)
<i>Fraxinus pennsylvanica</i>	0.67	37.57	7	5	d	d	0.6	37	d	d	0.2	19	0.6	54	d	d
<i>Liriodendron tulipifera</i>	0.30	25.00	1	1	d	d	0.3	25								
<i>Nyssa biflora</i>			0	0												
<i>Platanus occidentalis</i>			0	0												
<i>Quercus falcata</i>			0	0												
<i>Quercus lyrata</i>			0	0												
<i>Quercus nigra</i>	1.23	93.00	3	0	1.6	113	1.7	111	0.4	55						
<i>Quercus michauxii</i>			0	0												
<i>Quercus phellos</i>	0.60	35.00	1	0	0.6	35										
<i>Quercus rubra</i>			0	0												
<i>Quercus virginiana</i>			0	0												
<i>Quercus spp.</i>			0	2	d	d	d	d								
<i>Taxodium distichum</i>			0	0												
<b>Total planted stems per plot</b>			<b>12</b>	<b>8</b>												
<b>Total planted stems per acre</b>			<b>485.6</b>													

Planted and volunteer stems per acre

485.6









**Table 34. Plot 10-2. 2008 Monitoring Data - Little Contentnea Creek Riparian Buffer Restoration - Phase 3 - Greene County, NC.**

Species	Diameter (cm)	Height (cm)	Diameter (cm)	Height (cm)	Diameter (cm)	Height (cm)	Diameter (cm)	Height (cm)	Diameter (cm)	Height (cm)
<i>Fraxinus pennsylvanica</i>	d	d	d	d	d	d	d	d	0.9	59
<i>Liriodendron tulipifera</i>										
<i>Nyssa biflora</i>										
<i>Platanus occidentalis</i>										
<i>Quercus falcata</i>										
<i>Quercus lyrata</i>										
<i>Quercus nigra</i>										
<i>Quercus michauxii</i>										
<i>Quercus phellos</i>										
<i>Quercus rubra</i>										
<i>Quercus virginiana</i>										
<i>Quercus spp.</i>										
<i>Taxodium distichum</i>										
<b>Total planted stems per plot</b>										
<b>Total planted stems per acre</b>										

**Planted and volunteer stems per acre**

**Table 35. Plot 10-3. 2008 Monitoring Data - Little Contentnea Creek Riparian Buffer Restoration - Phase 3 - Greene County, NC.**

Species	Average Diameter (cm)	Average Height (cm)	Total Live Stems	Total Dead	Diameter (cm)	Height (cm)	Diameter (cm)	Height (cm)	Diameter (cm)	Height (cm)	Diameter (cm)	Height (cm)	Diameter (cm)	Height (cm)	Diameter (cm)	Height (cm)
<i>Fraxinus pennsylvanica</i>	0.98	51.67	6	4	1.5	65	d	d	0.9	52	0.4	44	d	d	d	d
<i>Liriodendron tulipifera</i>			0	0												
<i>Nyssa biflora</i>			0	0												
<i>Platanus occidentalis</i>			0	0												
<i>Quercus falcata</i>			0	0												
<i>Quercus lyrata</i>			0	0												
<i>Quercus nigra</i>	0.90	64.00	2	1	d	d	1.2	85	0.6	43						
<i>Quercus michauxii</i>			0	1	d	d										
<i>Quercus phellos</i>			0	0												
<i>Quercus rubra</i>			0	0												
<i>Quercus virginiana</i>			0	0												
<i>Quercus spp.</i>			0	2	d	d	d	d								
<i>Taxodium distichum</i>			0	0												
<b>Total planted stems per plot</b>			<b>8</b>	<b>8</b>												
<b>Total planted stems per acre</b>			<b>323.8</b>													

Planted and volunteer stems per acre

323.8



**Table 35. Plot 10-3. 2008 Monitoring Data - Little Contentnea Creek Riparian Buffer Restoration - Phase 3 - Greene County, NC.**

Species	Diameter (cm)	Height (cm)	Diameter (cm)	Height (cm)	Diameter (cm)	Height (cm)	Diameter (cm)	Height (cm)
<i>Fraxinus pennsylvanica</i>	d	d	1.4	74	1	53	0.7	22
<i>Liriodendron tulipifera</i>								
<i>Nyssa biflora</i>								
<i>Platanus occidentalis</i>								
<i>Quercus falcata</i>								
<i>Quercus lyrata</i>								
<i>Quercus nigra</i>								
<i>Quercus michauxii</i>								
<i>Quercus phellos</i>								
<i>Quercus rubra</i>								
<i>Quercus virginiana</i>								
<i>Quercus spp.</i>								
<i>Taxodium distichum</i>								
<b>Total planted stems per plot</b>								
<b>Total planted stems per acre</b>								

**Planted and volunteer stems per acre**



**Table 36. Plot 11-1. 2008 Monitoring Data - Little Contentnea Creek Riparian Buffer Restoration - Phase 3 - Greene County, NC.**

Species	Average Diameter (cm)	Average Height (cm)	Total Live Stems	Total Dead	Diameter (cm)	Height (cm)	Diameter (cm)	Height (cm)	Diameter (cm)	Height (cm)	Diameter (cm)	Height (cm)	Diameter (cm)	Height (cm)	Diameter (cm)	Height (cm)
<i>Fraxinus pennsylvanica</i>			0	1	d	d										
<i>Liriodendron tulipifera</i>			0	0												
<i>Nyssa biflora</i>			0	0												
<i>Platanus occidentalis</i>			0	0												
<i>Quercus falcata</i>			0	0												
<i>Quercus lyrata</i>			0	0												
<i>Quercus nigra</i>			0	0												
<i>Quercus michauxii</i>			0	0												
<i>Quercus phellos</i>			0	0												
<i>Quercus rubra</i>			0	0												
<i>Quercus virginiana</i>			0	0												
<i>Quercus spp.</i>			0	0												
<i>Taxodium distichum</i>			0	0												
<b>Total planted stems per plot</b>			<b>0</b>	<b>1</b>												
<b>Total planted stems per acre</b>			<b>0.0</b>													

**Planted and volunteer stems per acre** **0.0**



**Table 37. Plot 11-2. 2008 Monitoring Data - Little Contentnea Creek Riparian Buffer Restoration - Phase 3 - Greene County, NC.**

Species	Average Diameter (cm)	Average Height (cm)	Total Live Stems	Total Dead	Diameter (cm)	Height (cm)	Diameter (cm)	Height (cm)	Diameter (cm)	Height (cm)	Diameter (cm)	Height (cm)	Diameter (cm)	Height (cm)	Diameter (cm)	Height (cm)	Diameter (cm)
<i>Fraxinus pennsylvanica</i>	0.66	43.89	9	1	0.5	36	0.6	56	0.6	54	0.5	58	0.3	47	0.6	45	0.8
<i>Liriodendron tulipifera</i>	0.33	21.27	3	0	0.2	1.8	0.5	29	0.3	33							
<i>Nyssa biflora</i>			0	0													
<i>Platanus occidentalis</i>			0	0													
<i>Quercus falcata</i>			0	0													
<i>Quercus lyrata</i>			0	0													
<i>Quercus nigra</i>	0.72	51.80	5	0	0.8	53	0.6	50	1.2	63	0.4	35	0.6	58			
<i>Quercus michauxii</i>			0	0													
<i>Quercus phellos</i>			0	0													
<i>Quercus rubra</i>			0	0													
<i>Quercus virginiana</i>			0	0													
<i>Quercus spp.</i>			0	1	d	d											
<i>Taxodium distichum</i>			0	0													
<b>Total planted stems per plot</b>			<b>17</b>	<b>2</b>													
<b>Total planted stems per acre</b>			<b>688.0</b>														

Planted and volunteer stems per acre

1,902.1



**Table 37. Plot 11-2. 2008 Monitoring Data - Little Contentnea Creek Riparian Buffer Restoration - Phase 3 - Greene County, NC.**

Species	Height (cm)	Diameter (cm)	Height (cm)	Diameter (cm)	Height (cm)	Diameter (cm)	Height (cm)
<i>Fraxinus pennsylvanica</i>	33	d	d	1.1	30	0.9	36
<i>Liriodendron tulipifera</i>							
<i>Nyssa biflora</i>							
<i>Platanus occidentalis</i>							
<i>Quercus falcata</i>							
<i>Quercus lyrata</i>							
<i>Quercus nigra</i>							
<i>Quercus michauxii</i>							
<i>Quercus phellos</i>							
<i>Quercus rubra</i>							
<i>Quercus virginiana</i>							
<i>Quercus spp.</i>							
<i>Taxodium distichum</i>							
<b>Total planted stems per plot</b>							
<b>Total planted stems per acre</b>							

**Planted and volunteer stems per acre**







**Table 38. Plot 11-3. 2008 Monitoring Data - Little Contentnea Creek Riparian Buffer Restoration - Phase 3 - Greene County, NC.**

Species	Diameter (cm)	Height (cm)	Diameter (cm)	Height (cm)	Diameter (cm)	Height (cm)	Diameter (cm)	Height (cm)	Diameter (cm)	Height (cm)	Diameter (cm)	Height (cm)	Diameter (cm)	Height (cm)
<i>Fraxinus pennsylvanica</i>	0.6	56	0.6	54	0.4	43	0.9	40	0.6	54	0.7	32	0.3	51
<i>Liriodendron tulipifera</i>														
<i>Nyssa biflora</i>														
<i>Platanus occidentalis</i>														
<i>Quercus falcata</i>														
<i>Quercus lyrata</i>														
<i>Quercus nigra</i>														
<i>Quercus michauxii</i>														
<i>Quercus phellos</i>														
<i>Quercus rubra</i>														
<i>Quercus virginiana</i>														
<i>Quercus spp.</i>														
<i>Taxodium distichum</i>														
<b>Total planted stems per plot</b>														
<b>Total planted stems per acre</b>														

**Planted and volunteer stems per acre**

**Table 39. Plot 11-4. 2008 Monitoring Data - Little Contentnea Creek Riparian Buffer Restoration - Phase 3 - Greene County, NC.**

Species	Average Diameter (cm)	Average Height (cm)	Total Live Stems	Total Dead	Diameter (cm)	Height (cm)	Diameter (cm)	Height (cm)	Diameter (cm)	Height (cm)	Diameter (cm)	Height (cm)	Diameter (cm)	Height (cm)	Diameter (cm)	Height (cm)
<i>Fraxinus pennsylvanica</i>	0.10	13.00	1	5	d	d	d	d	d	d	d	d	0.1	13	d	d
<i>Liriodendron tulipifera</i>			0	0												
<i>Nyssa biflora</i>			0	0												
<i>Platanus occidentalis</i>	1.20	60.33	3	0	0.5	50	0.6	46	2.5	85						
<i>Quercus falcata</i>			0	0												
<i>Quercus lyrata</i>			0	0												
<i>Quercus nigra</i>			0	4	d	d	d	d	d	d	d	d				
<i>Quercus michauxii</i>			0	0												
<i>Quercus phellos</i>			0	0												
<i>Quercus rubra</i>			0	0												
<i>Quercus virginiana</i>			0	0												
<i>Quercus spp.</i>			0	1	d	d										
<i>Taxodium distichum</i>			0	0												
<b>Total planted stems per plot</b>			<b>4</b>	<b>10</b>												
<b>Total planted stems per acre</b>			<b>161.9</b>													

Planted and volunteer stems per acre

161.9





**Table 40. Plot 12-1. 2008 Monitoring Data - Little Contentnea Creek Riparian Buffer Restoration - Phase 3 - Greene County, NC.**

Species	Average Diameter (cm)	Average Height (cm)	Total Live Stems	Total Dead	Diameter (cm)	Height (cm)	Diameter (cm)	Height (cm)	Diameter (cm)	Height (cm)	Diameter (cm)	Height (cm)	Diameter (cm)	Height (cm)	Diameter (cm)	Height (cm)
<i>Fraxinus pennsylvanica</i>	0.40	51.33	6	0	0.5	60	0.4	55	0.3	41	0.3	49	0.3	42	0.6	61
<i>Liriodendron tulipifera</i>			0	0												
<i>Nyssa biflora</i>	0.70	67.00	1	1	0.7	67	d	d								
<i>Platanus occidentalis</i>	142.00	0.40	1	0	142	0.4										
<i>Quercus falcata</i>			0	0												
<i>Quercus lyrata</i>			0	0												
<i>Quercus nigra</i>	0.90	67.00	1	0	0.9	67										
<i>Quercus michauxii</i>			0	0												
<i>Quercus phellos</i>			0	0												
<i>Quercus rubra</i>			0	0												
<i>Quercus virginiana</i>			0	0												
<i>Quercus spp.</i>			0	1	d	d										
<i>Taxodium distichum</i>			0	0												
<b>Total planted stems per plot</b>			<b>9</b>	<b>2</b>												
<b>Total planted stems per acre</b>			<b>364.2</b>													

Planted and volunteer stems per acre

1,254.6



**Table 41. Plot 12-2. 2008 Monitoring Data - Little Contentnea Creek Riparian Buffer Restoration - Phase 3 - Greene County, NC.**

Species	Average Diameter (cm)	Average Height (cm)	Total Live Stems	Total Dead	Diameter (cm)	Height (cm)	Diameter (cm)	Height (cm)	Diameter (cm)	Height (cm)	Diameter (cm)	Height (cm)	Diameter (cm)	Height (cm)	Diameter (cm)	Height (cm)
<i>Fraxinus pennsylvanica</i>	0.62	47.33	6	4	0.9	56	1	39	d	d	d	d	d	d	d	d
<i>Liriodendron tulipifera</i>			0	0												
<i>Nyssa biflora</i>	0.20	13.00	1	0	0.2	13										
<i>Platanus occidentalis</i>	0.70	178.67	3	0	0.8	201	0.7	165	0.6	170						
<i>Quercus falcata</i>			0	0												
<i>Quercus lyrata</i>			0	0												
<i>Quercus nigra</i>			0	0												
<i>Quercus michauxii</i>			0	0												
<i>Quercus phellos</i>	1.00	80.00	1	0	1	80										
<i>Quercus rubra</i>			0	0												
<i>Quercus virginiana</i>			0	0												
<i>Quercus spp.</i>			0	0												
<i>Taxodium distichum</i>			0	0												
<b>Total planted stems per plot</b>			<b>11</b>	<b>4</b>												
<b>Total planted stems per acre</b>			<b>445.2</b>													

Planted and volunteer stems per acre

1,214.1



**Table 41. Plot 12-2. 2008 Monitoring Data - Little Contentnea Creek Riparian Buffer Restoration - Phase 3 - Greene County, NC.**

Species	Diameter (cm)	Height (cm)	Diameter (cm)	Height (cm)	Diameter (cm)	Height (cm)	Diameter (cm)	Height (cm)
<i>Fraxinus pennsylvanica</i>	0.4	42	0.5	48	0.4	47	0.5	52
<i>Liriodendron tulipifera</i>								
<i>Nyssa biflora</i>								
<i>Platanus occidentalis</i>								
<i>Quercus falcata</i>								
<i>Quercus lyrata</i>								
<i>Quercus nigra</i>								
<i>Quercus michauxii</i>								
<i>Quercus phellos</i>								
<i>Quercus rubra</i>								
<i>Quercus virginiana</i>								
<i>Quercus spp.</i>								
<i>Taxodium distichum</i>								
<b>Total planted stems per plot</b>								
<b>Total planted stems per acre</b>								

**Planted and volunteer stems per acre**

**Table 42. Plot 12-3. 2008 Monitoring Data - Little Contentnea Creek Riparian Buffer Restoration - Phase 3 - Greene County, NC.**

Species	Average Diameter (cm)	Average Height (cm)	Total Live Stems	Total Dead	Diameter (cm)	Height (cm)	Diameter (cm)	Height (cm)	Diameter (cm)	Height (cm)	Diameter (cm)	Height (cm)	Diameter (cm)	Height (cm)	Diameter (cm)	Height (cm)
<i>Fraxinus pennsylvanica</i>	0.52	45.29	7	0	0.6	45	0.4	51	0.7	28	0.6	56	0.5	55	0.3	37
<i>Liriodendron tulipifera</i>			0	0												
<i>Nyssa biflora</i>			0	0												
<i>Platanus occidentalis</i>			0	0												
<i>Quercus falcata</i>			0	0												
<i>Quercus lyrata</i>			0	0												
<i>Quercus nigra</i>			0	0												
<i>Quercus michauxii</i>			0	0												
<i>Quercus phellos</i>	0.65	198.00	2	0	0.7	207	0.6	189								
<i>Quercus rubra</i>			0	0												
<i>Quercus virginiana</i>			0	0												
<i>Quercus spp.</i>			0	0												
<i>Taxodium distichum</i>			0	0												
<b>Total planted stems per plot</b>			<b>9</b>	<b>0</b>												
<b>Total planted stems per acre</b>			<b>364.2</b>													

Planted and volunteer stems per acre

2,266.3





**Table 42. Plot 12-3. 2008 Monitoring Data - Little Contentnea Creek Riparian Buffer Restoration - Phase 3 - Greene County, NC.**

Species	Diameter (cm)	Height (cm)
<i>Fraxinus pennsylvanica</i>		45
<i>Liriodendron tulipifera</i>		
<i>Nyssa biflora</i>		
<i>Platanus occidentalis</i>		
<i>Quercus falcata</i>		
<i>Quercus lyrata</i>		
<i>Quercus nigra</i>		
<i>Quercus michauxii</i>		
<i>Quercus phellos</i>		
<i>Quercus rubra</i>		
<i>Quercus virginiana</i>		
<i>Quercus spp.</i>		
<i>Taxodium distichum</i>		
<b>Total planted stems per plot</b>		
<b>Total planted stems per acre</b>		

**Planted and volunteer stems per acre**

**Table 43. Plot 12-4. 2008 Monitoring Data - Little Contentnea Creek Riparian Buffer Restoration - Phase 3 - Greene County, NC.**

Species	Average Diameter (cm)	Average Height (cm)	Total Live Stems	Total Dead	Diameter (cm)	Height (cm)	Diameter (cm)	Height (cm)	Diameter (cm)	Height (cm)	Diameter (cm)	Height (cm)	Diameter (cm)	Height (cm)	Diameter (cm)	Height (cm)
<i>Fraxinus pennsylvanica</i>	0.96	25.86	7	3	0.6	14	d	d	0.8	58	0.4	20	0.2	12	4	23
<i>Liriodendron tulipifera</i>			0	0												
<i>Nyssa biflora</i>			0	0												
<i>Platanus occidentalis</i>			0	0												
<i>Quercus falcata</i>			0	0												
<i>Quercus lyrata</i>			0	0												
<i>Quercus nigra</i>			0	0												
<i>Quercus michauxii</i>			0	0												
<i>Quercus phellos</i>			0	0												
<i>Quercus rubra</i>			0	0												
<i>Quercus virginiana</i>			0	0												
<i>Quercus spp.</i>			0	1	d	d										
<i>Taxodium distichum</i>			0	0												
<b>Total planted stems per plot</b>			<b>7</b>	<b>4</b>												
<b>Total planted stems per acre</b>			<b>283.3</b>													

Planted and volunteer stems per acre

283.3



**Table 43. Plot 12-4. 2008 Monitoring Data - Little Contentnea Creek Riparian Buffer Restoration - Phase 3 - Greene County, NC.**

Species	Diameter (cm)	Height (cm)	Diameter (cm)	Height (cm)	Diameter (cm)	Height (cm)	Diameter (cm)	Height (cm)
<i>Fraxinus pennsylvanica</i>	d	d	0.6	40	0.1	14	d	d
<i>Liriodendron tulipifera</i>								
<i>Nyssa biflora</i>								
<i>Platanus occidentalis</i>								
<i>Quercus falcata</i>								
<i>Quercus lyrata</i>								
<i>Quercus nigra</i>								
<i>Quercus michauxii</i>								
<i>Quercus phellos</i>								
<i>Quercus rubra</i>								
<i>Quercus virginiana</i>								
<i>Quercus spp.</i>								
<i>Taxodium distichum</i>								
<b>Total planted stems per plot</b>								
<b>Total planted stems per acre</b>								

**Planted and volunteer stems per acre**

**Table 44. Plot 13-1. 2008 Monitoring Data - Little Contentnea Creek Riparian Buffer Restoration - Phase 3 - Greene County, NC.**

Species	Average Diameter (cm)	Average Height (cm)	Total Live Stems	Total Dead	Diameter (cm)	Height (cm)	Diameter (cm)	Height (cm)	Diameter (cm)	Height (cm)	Diameter (cm)	Height (cm)	Diameter (cm)	Height (cm)	Diameter (cm)	Height (cm)
<i>Fraxinus pennsylvanica</i>	0.83	37.67	3	0	0.3	19	0.7	30	1.5	64						
<i>Liriodendron tulipifera</i>			0	0												
<i>Nyssa biflora</i>			0	0												
<i>Platanus occidentalis</i>			0	0												
<i>Quercus falcata</i>			0	0												
<i>Quercus lyrata</i>			0	0												
<i>Quercus nigra</i>			0	0												
<i>Quercus michauxii</i>			0	0												
<i>Quercus phellos</i>			0	0												
<i>Quercus rubra</i>			0	0												
<i>Quercus virginiana</i>			0	0												
<i>Quercus spp.</i>	#DIV/0!	9.00	1	0		9										
<i>Taxodium distichum</i>			0	0												
<b>Total planted stems per plot</b>			<b>4</b>	<b>0</b>												
<b>Total planted stems per acre</b>			<b>161.9</b>													

Planted and volunteer stems per acre

688.0





**Table 45. Plot 13-2. 2008 Monitoring Data - Little Contentnea Creek Riparian Buffer Restoration - Phase 3 - Greene County, NC.**

Species	Average Diameter (cm)	Average Height (cm)	Total Live Stems	Total Dead	Diameter (cm)	Height (cm)	Diameter (cm)	Height (cm)	Diameter (cm)	Height (cm)	Diameter (cm)	Height (cm)	Diameter (cm)	Height (cm)	Diameter (cm)	Height (cm)
<i>Fraxinus pennsylvanica</i>	0.78	32.75	4	0	0.7	30	0.9	25	0.4	15	1.1	61				
<i>Liriodendron tulipifera</i>	0.25	13.50	2	1	d	d	0.2	12	0.3	15						
<i>Nyssa biflora</i>			0	0												
<i>Platanus occidentalis</i>			0	0												
<i>Quercus falcata</i>			0	0												
<i>Quercus lyrata</i>			0	0												
<i>Quercus nigra</i>			0	0												
<i>Quercus michauxii</i>			0	0												
<i>Quercus phellos</i>	0.33	34.00	3	0	0.1	14	0.2	23	0.7	65						
<i>Quercus rubra</i>			0	0												
<i>Quercus virginiana</i>			0	0												
<i>Quercus spp.</i>			0	0												
<i>Taxodium distichum</i>			0	0												
<b>Total planted stems per plot</b>			<b>9</b>	<b>1</b>												
<b>Total planted stems per acre</b>			<b>364.2</b>													

Planted and volunteer stems per acre

404.7



**Table 46. Plot 13-3. 2008 Monitoring Data - Little Contentnea Creek Riparian Buffer Restoration - Phase 3 - Greene County, NC.**

	Average Diameter (cm)	Average Height (cm)	Total Live Stems	Total Dead	Diameter (cm)	Height (cm)	Diameter (cm)	Height (cm)	Diameter (cm)	Height (cm)	Diameter (cm)	Height (cm)	Diameter (cm)	Height (cm)	Diameter (cm)	Height (cm)
<i>Fraxinus pennsylvanica</i>	0.63	37.25	4	0	0.5	30	0.6	29	0.8	30	0.6	60				
<i>Liriodendron tulipifera</i>			0	0												
<i>Nyssa biflora</i>			0	0												
<i>Platanus occidentalis</i>	0.20	22.00	1	1	d	d	0.2	22								
<i>Quercus falcata</i>			0	0												
<i>Quercus lyrata</i>			0	0												
<i>Quercus nigra</i>			0	0												
<i>Quercus michauxii</i>			0	0												
<i>Quercus phellos</i>	0.43	37.67	3	0	0.4	50	0.1	19	0.8	44						
<i>Quercus rubra</i>	0.60	45.00	1	0	0.6	45										
<i>Quercus virginiana</i>			0	0												
<i>Quercus spp.</i>			0	0												
<i>Taxodium distichum</i>			0	0												
<b>Total planted stems per plot</b>			<b>9</b>	<b>1</b>												
<b>Total planted stems per acre</b>			<b>364.2</b>													

Planted and volunteer stems per acre

445.2



**Table 47. Plot 13-4. 2008 Monitoring Data - Little Contentnea Creek Riparian Buffer Restoration - Phase 3 - Greene County, NC.**

Species	Average Diameter (cm)	Average Height (cm)	Total Live Stems	Total Dead	Diameter (cm)	Height (cm)	Diameter (cm)	Height (cm)	Diameter (cm)	Height (cm)	Diameter (cm)	Height (cm)	Diameter (cm)	Height (cm)	Diameter (cm)	Height (cm)
<i>Fraxinus pennsylvanica</i>	0.40	6.00	1	1	0.4	6 d	d									
<i>Liriodendron tulipifera</i>			0	0												
<i>Nyssa biflora</i>			0	0												
<i>Platanus occidentalis</i>			0	0												
<i>Quercus falcata</i>			0	0												
<i>Quercus lyrata</i>			0	0												
<i>Quercus nigra</i>			0	0												
<i>Quercus michauxii</i>			0	0												
<i>Quercus phellos</i>			0	0												
<i>Quercus rubra</i>			0	0												
<i>Quercus virginiana</i>			0	0												
<i>Quercus spp.</i>			0	1 d	d											
<i>Taxodium distichum</i>			0	0												
<b>Total planted stems per plot</b>			<b>1</b>	<b>2</b>												
<b>Total planted stems per acre</b>			<b>40.5</b>													

Planted and volunteer stems per acre

40.5





**Table 48. Plot 14-1. 2008 Monitoring Data - Little Contentnea Creek Riparian Buffer Restoration - Phase 3 - Greene County, NC.**

Species	Average Diameter (cm)	Average Height (cm)	Total Live Stems	Total Dead	Diameter (cm)	Height (cm)	Diameter (cm)	Height (cm)	Diameter (cm)	Height (cm)	Diameter (cm)	Height (cm)	Diameter (cm)	Height (cm)	Diameter (cm)	Height (cm)
<i>Fraxinus pennsylvanica</i>	0.67	32.00	3	1	0.2	12	0.6	41	1.2	43	d	d				
<i>Liriodendron tulipifera</i>			0	0												
<i>Nyssa biflora</i>			0	0												
<i>Platanus occidentalis</i>	0.88	129.20	5	0	1.5	133	1.2	99	0.8	92	0.4	162	0.5	160		
<i>Quercus falcata</i>			0	0												
<i>Quercus lyrata</i>			0	0												
<i>Quercus nigra</i>			0	0												
<i>Quercus michauxii</i>			0	0												
<i>Quercus phellos</i>			0	0												
<i>Quercus rubra</i>			0	0												
<i>Quercus virginiana</i>			0	0												
<i>Quercus spp.</i>			0	0												
<i>Taxodium distichum</i>			0	0												
<b>Total planted stems per plot</b>			<b>8</b>	<b>1</b>												
<b>Total planted stems per acre</b>			<b>323.8</b>													

Planted and volunteer stems per acre

17,321.2



**Table 49. Plot 14-2. 2008 Monitoring Data - Little Contentnea Creek Riparian Buffer Restoration - Phase 3 - Greene County, NC.**

Species	Average Diameter (cm)	Average Height (cm)	Total Live Stems	Total Dead	Diameter (cm)	Height (cm)	Diameter (cm)	Height (cm)	Diameter (cm)	Height (cm)	Diameter (cm)	Height (cm)	Diameter (cm)	Height (cm)	Diameter (cm)	Height (cm)
<i>Fraxinus pennsylvanica</i>	1.00	28.00	3	0	0.9	37	1.1	15	1	32						
<i>Liriodendron tulipifera</i>	0.20	23.00	1	0	0.2	23										
<i>Nyssa biflora</i>			0	0												
<i>Platanus occidentalis</i>	0.57	51.00	3	0	0.7	67	0.5	40	0.5	46						
<i>Quercus falcata</i>			0	0												
<i>Quercus lyrata</i>			0	0												
<i>Quercus nigra</i>	1.70	56.00	1	0	1.7	56										
<i>Quercus michauxii</i>			0	0												
<i>Quercus phellos</i>			0	0												
<i>Quercus rubra</i>			0	0												
<i>Quercus virginiana</i>			0	0												
<i>Quercus spp.</i>			0	0												
<i>Taxodium distichum</i>			0	0												
<b>Total planted stems per plot</b>			<b>8</b>	<b>0</b>												
<b>Total planted stems per acre</b>			<b>323.8</b>													

Planted and volunteer stems per acre

23,675.0



**Table 50. Plot 14-3. 2008 Monitoring Data - Little Contentnea Creek Riparian Buffer Restoration - Phase 3 - Greene County, NC.**

Species	Average Diameter (cm)	Average Height (cm)	Total Live Stems	Total Dead	Diameter (cm)	Height (cm)	Diameter (cm)	Height (cm)	Diameter (cm)	Height (cm)	Diameter (cm)	Height (cm)	Diameter (cm)	Height (cm)	Diameter (cm)	Height (cm)
<i>Fraxinus pennsylvanica</i>	0.80	17.00	1	0	0.8	17										
<i>Liriodendron tulipifera</i>	1.00	63.00	1	0	1	63										
<i>Nyssa biflora</i>			0	0												
<i>Platanus occidentalis</i>			0	0												
<i>Quercus falcata</i>			0	0												
<i>Quercus lyrata</i>			0	0												
<i>Quercus nigra</i>	0.70	81.00	1	0	0.7	81										
<i>Quercus michauxii</i>			0	0												
<i>Quercus phellos</i>	0.53	91.00	4	0	0.8	46	0.5	92	0.5	60	0.3	166				
<i>Quercus rubra</i>			0	0												
<i>Quercus virginiana</i>			0	0												
<i>Quercus spp.</i>			0	0												
<i>Taxodium distichum</i>			0	0												
<b>Total planted stems per plot</b>			<b>7</b>	<b>0</b>												
<b>Total planted stems per acre</b>			<b>283.3</b>													

Planted and volunteer stems per acre

14,528.7





**Table 51. Plot 14-4. 2008 Monitoring Data - Little Contentnea Creek Riparian Buffer Restoration - Phase 3 - Greene County, NC.**

Species	Average Diameter (cm)	Average Height (cm)	Total Live Stems	Total Dead	Diameter (cm)	Height (cm)	Diameter (cm)	Height (cm)	Diameter (cm)	Height (cm)	Diameter (cm)	Height (cm)	Diameter (cm)	Height (cm)	Diameter (cm)	Height (cm)
<i>Fraxinus pennsylvanica</i>	0.77	27.33	3	0	0.5	20	0.7	27	1.1	35						
<i>Liriodendron tulipifera</i>			0	0												
<i>Nyssa biflora</i>	0.40	23.00	1	0	0.4	23										
<i>Platanus occidentalis</i>			0	0												
<i>Quercus falcata</i>			0	0												
<i>Quercus lyrata</i>			0	0												
<i>Quercus nigra</i>	1.20	98.00	2	0	1.3	105	1.1	91								
<i>Quercus michauxii</i>			0	0												
<i>Quercus phellos</i>	0.77	60.50	6	0	0.9	60	0.6	50	0.6	40	0.6	62	1.2	97	0.7	54
<i>Quercus rubra</i>			0	0												
<i>Quercus virginiana</i>			0	0												
<i>Quercus spp.</i>			0	0												
<i>Taxodium distichum</i>			0	0												
<b>Total planted stems per plot</b>			<b>12</b>	<b>0</b>												
<b>Total planted stems per acre</b>			<b>485.6</b>													

Planted and volunteer stems per acre

21,934.7



**Table 52. Plot 15-1. 2008 Monitoring Data - Little Contentnea Creek Riparian Buffer Restoration - Phase 3 - Greene County, NC .**

Species	Average Diameter (cm)	Average Height (cm)	Total Live Stems	Total Dead	Diameter (cm)	Height (cm)	Diameter (cm)	Height (cm)	Diameter (cm)	Height (cm)	Diameter (cm)	Height (cm)	Diameter (cm)	Height (cm)	Diameter (cm)	Height (cm)
<i>Fraxinus pennsylvanica</i>			0	0												
<i>Liriodendron tulipifera</i>			0	0												
<i>Nyssa biflora</i>			0	0												
<i>Platanus occidentalis</i>			0	0												
<i>Quercus falcata</i>			0	0												
<i>Quercus lyrata</i>			0	0												
<i>Quercus nigra</i>			0	0												
<i>Quercus michauxii</i>			0	0												
<i>Quercus phellos</i>	0.53	78.00	3	0	0.2	148	0.5	58	0.9	28						
<i>Quercus rubra</i>			0	0												
<i>Quercus virginiana</i>	0.90	92.43	7	0	1.3	115	0.9	116	0.6	70	0.6	50	0.9	95	0.7	91
<i>Quercus spp.</i>			0	0												
<i>Taxodium distichum</i>			0	0												
<b>Total planted stems per plot</b>			<b>10</b>	<b>0</b>												
<b>Total planted stems per acre</b>			<b>404.7</b>													

Planted and volunteer stems per acre

849.9



**Table 52. Plot 15-1. 2008 Monitoring Data - Little Contentnea Creek Riparian Buffer Restoration - Phase 3 - Greene County, NC .**

Species	Diameter (cm)	Height (cm)
<i>Fraxinus pennsylvanica</i>		
<i>Liriodendron tulipifera</i>		
<i>Nyssa biflora</i>		
<i>Platanus occidentalis</i>		
<i>Quercus falcata</i>		
<i>Quercus lyrata</i>		
<i>Quercus nigra</i>		
<i>Quercus michauxii</i>		
<i>Quercus phellos</i>		
<i>Quercus rubra</i>		
<i>Quercus virginiana</i>	1.3	110
<i>Quercus spp.</i>		
<i>Taxodium distichum</i>		
<b>Total planted stems per plot</b>		
<b>Total planted stems per acre</b>		

**Planted and volunteer stems per acre**

**Table 53. Plot 15-2. 2008 Monitoring Data - Little Contentnea Creek Riparian Buffer Restoration - Phase 3 - Greene County, NC.**

Species	Average Diameter (cm)	Average Height (cm)	Total Live Stems	Total Dead	Diameter (cm)	Height (cm)	Diameter (cm)	Height (cm)	Diameter (cm)	Height (cm)	Diameter (cm)	Height (cm)	Diameter (cm)	Height (cm)	Diameter (cm)	Height (cm)
<i>Fraxinus pennsylvanica</i>			0	0												
<i>Liriodendron tulipifera</i>			0	0												
<i>Nyssa biflora</i>			0	0												
<i>Platanus occidentalis</i>			0	0												
<i>Quercus falcata</i>	1.10	77.00	1	0	1.1	77										
<i>Quercus lyrata</i>			0	0												
<i>Quercus nigra</i>	1.63	93.38	8	0	0.2	144	0.2	29	0.5	100	1.1	103	0.6	77	8	120
<i>Quercus michauxii</i>			0	0												
<i>Quercus phellos</i>	0.50	151.67	3	0	0.3	163	0.5	178	0.7	114						
<i>Quercus rubra</i>			0	0												
<i>Quercus virginiana</i>	1.05	166.50	2	0	1.3	255	0.8	78								
<i>Quercus spp.</i>			0	0												
<i>Taxodium distichum</i>			0	0												
<b>Total planted stems per plot</b>			<b>14</b>	<b>0</b>												
<b>Total planted stems per acre</b>			<b>566.6</b>													

Planted and volunteer stems per acre

1,618.8





**Table 53. Plot 15-2. 2008 Monitoring Data - Little Contentnea Creek Riparian Buffer Restoration - Phase 3 - Greene County, NC.**

Species	Diameter (cm)	Height (cm)	Diameter (cm)	Height (cm)
<i>Fraxinus pennsylvanica</i>				
<i>Liriodendron tulipifera</i>				
<i>Nyssa biflora</i>				
<i>Platanus occidentalis</i>				
<i>Quercus falcata</i>				
<i>Quercus lyrata</i>				
<i>Quercus nigra</i>	1.5	62	0.9	112
<i>Quercus michauxii</i>				
<i>Quercus phellos</i>				
<i>Quercus rubra</i>				
<i>Quercus virginiana</i>				
<i>Quercus spp.</i>				
<i>Taxodium distichum</i>				
<b>Total planted stems per plot</b>				
<b>Total planted stems per acre</b>				

**Planted and volunteer stems per acre**

**Table 54. Plot 15-3. 2008 Monitoring Data - Little Contentnea Creek Riparian Buffer Restoration - Phase 3 - Greene County, NC.**

Species	Average Diameter (cm)	Average Height (cm)	Total Live Stems	Total Dead	Diameter (cm)	Height (cm)	Diameter (cm)	Height (cm)	Diameter (cm)	Height (cm)	Diameter (cm)	Height (cm)	Diameter (cm)	Height (cm)	Diameter (cm)	Height (cm)
<i>Fraxinus pennsylvanica</i>	1.13	68.86	7	1	0.9	62	1.1	85	1	75	1.1	69	0.8	72	1.2	34
<i>Liriodendron tulipifera</i>			0	1	d	d										
<i>Nyssa biflora</i>			0	0												
<i>Platanus occidentalis</i>			0	0												
<i>Quercus falcata</i>			0	0												
<i>Quercus lyrata</i>			0	0												
<i>Quercus nigra</i>			0	0												
<i>Quercus michauxii</i>			0	0												
<i>Quercus phellos</i>			0	0												
<i>Quercus rubra</i>			0	0												
<i>Quercus virginiana</i>			0	0												
<i>Quercus spp.</i>			0	0												
<i>Taxodium distichum</i>			0	0												
<b>Total planted stems per plot</b>			<b>7</b>	<b>2</b>												
<b>Total planted stems per acre</b>			<b>283.3</b>													

Planted and volunteer stems per acre

768.9



**Table 54. Plot 15-3. 2008 Monitoring Data - Little Contentnea Creek Riparian Buffer Restoration - Phase 3 - Greene County, NC.**

Species	Diameter (cm)	Height (cm)	Diameter (cm)	Height (cm)
<i>Fraxinus pennsylvanica</i>	d	d	1.8	85
<i>Liriodendron tulipifera</i>				
<i>Nyssa biflora</i>				
<i>Platanus occidentalis</i>				
<i>Quercus falcata</i>				
<i>Quercus lyrata</i>				
<i>Quercus nigra</i>				
<i>Quercus michauxii</i>				
<i>Quercus phellos</i>				
<i>Quercus rubra</i>				
<i>Quercus virginiana</i>				
<i>Quercus spp.</i>				
<i>Taxodium distichum</i>				
<b>Total planted stems per plot</b>				
<b>Total planted stems per acre</b>				

**Planted and volunteer stems per acre**

**Table 55. Plot 15-4. 2008 Monitoring Data - Little Contentnea Creek Riparian Buffer Restoration - Phase 3 - Greene County, NC.**

Species	Average Diameter (cm)	Average Height (cm)	Total Live Stems	Total Dead	Diameter (cm)	Height (cm)	Diameter (cm)	Height (cm)	Diameter (cm)	Height (cm)	Diameter (cm)	Height (cm)	Diameter (cm)	Height (cm)	Diameter (cm)	Height (cm)
<i>Fraxinus pennsylvanica</i>	1.10	64.75	8	0	0.8	50	1.2	85	1.3	83	1.1	39	1.2	75	0.9	86
<i>Liriodendron tulipifera</i>			0	0												
<i>Nyssa biflora</i>			0	0												
<i>Platanus occidentalis</i>			0	0												
<i>Quercus falcata</i>			0	0												
<i>Quercus lyrata</i>			0	0												
<i>Quercus nigra</i>			0	0												
<i>Quercus michauxii</i>			0	0												
<i>Quercus phellos</i>	0.50	29.00	3	1	0.2	20	d	d	0.5	22	0.8	45				
<i>Quercus rubra</i>			0	0												
<i>Quercus virginiana</i>			0	0												
<i>Quercus spp.</i>			0	0												
<i>Taxodium distichum</i>			0	0												
<b>Total planted stems per plot</b>			<b>11</b>	<b>1</b>												
<b>Total planted stems per acre</b>			<b>445.2</b>													

**Planted and volunteer stems per acre**

**1,052.2**



**Table 55. Plot 15-4. 2008 Monitoring Data - Little Contentnea Creek Riparian Buffer Restoration - Phase 3 - Greene County, NC.**

Species	Diameter (cm)	Height (cm)	Diameter (cm)	Height (cm)
<i>Fraxinus pennsylvanica</i>	0.8	57	1.5	43
<i>Liriodendron tulipifera</i>				
<i>Nyssa biflora</i>				
<i>Platanus occidentalis</i>				
<i>Quercus falcata</i>				
<i>Quercus lyrata</i>				
<i>Quercus nigra</i>				
<i>Quercus michauxii</i>				
<i>Quercus phellos</i>				
<i>Quercus rubra</i>				
<i>Quercus virginiana</i>				
<i>Quercus spp.</i>				
<i>Taxodium distichum</i>				
<b>Total planted stems per plot</b>				
<b>Total planted stems per acre</b>				

**Planted and volunteer stems per acre**



**Table 56. Plot 16-1. 2008 Monitoring Data - Little Contentnea Creek Riparian Buffer Restoration - Phase 3 - Greene County, NC.**

Species	Average Diameter (cm)	Average Height (cm)	Total Live Stems	Total Dead	Diameter (cm)	Height (cm)	Diameter (cm)	Height (cm)	Diameter (cm)	Height (cm)	Diameter (cm)	Height (cm)	Diameter (cm)	Height (cm)	Diameter (cm)	Height (cm)
<i>Fraxinus pennsylvanica</i>	0.40	21.20	5	0	0.3	12	0.8	40	0.5	21	0.1	11	0.3	22		
<i>Liriodendron tulipifera</i>			0	0												
<i>Nyssa biflora</i>			0	0												
<i>Platanus occidentalis</i>	1.50	113.00	1	2	d	d	d	d	1.5	113						
<i>Quercus falcata</i>			0	0												
<i>Quercus lyrata</i>			0	0												
<i>Quercus nigra</i>			0	0												
<i>Quercus michauxii</i>			0	0												
<i>Quercus phellos</i>	0.60	63.00	1	0	0.6	63										
<i>Quercus rubra</i>	0.80	60.00	1	0	0.8	60										
<i>Quercus virginiana</i>			0	0												
<i>Quercus spp.</i>			0	0												
<i>Taxodium distichum</i>			0	0												
<b>Total planted stems per plot</b>			<b>8</b>	<b>2</b>												
<b>Total planted stems per acre</b>			<b>323.8</b>													

**Planted and volunteer stems per acre** **323.8**



**Table 57. Plot 16-2. 2008 Monitoring Data - Little Contentnea Creek Riparian Buffer Restoration - Phase 3 - Greene County, NC.**

Species	Average Diameter (cm)	Average Height (cm)	Total Live Stems	Total Dead	Diameter (cm)	Height (cm)	Diameter (cm)	Height (cm)	Diameter (cm)	Height (cm)	Diameter (cm)	Height (cm)	Diameter (cm)	Height (cm)	Diameter (cm)	Height (cm)
<i>Fraxinus pennsylvanica</i>	0.48	23.33	6	3	d	d	d	d	d	d	0.7	12	0.4	21		6
<i>Liriodendron tulipifera</i>		8.00	1	0		8										
<i>Nyssa biflora</i>			0	0												
<i>Platanus occidentalis</i>			0	0												
<i>Quercus falcata</i>			0	0												
<i>Quercus lyrata</i>			0	0												
<i>Quercus nigra</i>			0	0												
<i>Quercus michauxii</i>			0	0												
<i>Quercus phellos</i>			0	0												
<i>Quercus rubra</i>			0	0												
<i>Quercus virginiana</i>			0	0												
<i>Quercus spp.</i>			0	0												
<i>Taxodium distichum</i>			0	0												
<b>Total planted stems per plot</b>			<b>7</b>	<b>3</b>												
<b>Total planted stems per acre</b>			<b>283.3</b>													

Planted and volunteer stems per acre

283.3



**Table 57. Plot 16-2. 2008 Monitoring Data - Little Contentnea Creek Riparian Buffer Restoration - Phase 3 - Greene County, NC.**

Species	Diameter (cm)	Height (cm)	Diameter (cm)	Height (cm)	Diameter (cm)	Height (cm)
<i>Fraxinus pennsylvanica</i>	0.3	19	0.7	55	0.3	27
<i>Liriodendron tulipifera</i>						
<i>Nyssa biflora</i>						
<i>Platanus occidentalis</i>						
<i>Quercus falcata</i>						
<i>Quercus lyrata</i>						
<i>Quercus nigra</i>						
<i>Quercus michauxii</i>						
<i>Quercus phellos</i>						
<i>Quercus rubra</i>						
<i>Quercus virginiana</i>						
<i>Quercus spp.</i>						
<i>Taxodium distichum</i>						
<b>Total planted stems per plot</b>						
<b>Total planted stems per acre</b>						

**Planted and volunteer stems per acre**

**Table 58. Plot 16-3. 2008 Monitoring Data - Little Contentnea Creek Riparian Buffer Restoration - Phase 3 - Greene County, NC.**

Species	Average Diameter (cm)	Average Height (cm)	Total Live Stems	Total Dead	Diameter (cm)	Height (cm)	Diameter (cm)	Height (cm)	Diameter (cm)	Height (cm)	Diameter (cm)	Height (cm)	Diameter (cm)	Height (cm)	Diameter (cm)	Height (cm)
<i>Fraxinus pennsylvanica</i>	0.89	61.25	8	0	1	40	0.8	54	1.5	85	0.5	53	0.8	45	0.8	40
<i>Liriodendron tulipifera</i>			0	0												
<i>Nyssa biflora</i>			0	0												
<i>Platanus occidentalis</i>			0	0												
<i>Quercus falcata</i>			0	0												
<i>Quercus lyrata</i>			0	0												
<i>Quercus nigra</i>			0	0												
<i>Quercus michauxii</i>			0	0												
<i>Quercus phellos</i>	1.17	88.00	3	0	1.4	108	1	46	1.1	110						
<i>Quercus rubra</i>			0	0												
<i>Quercus virginiana</i>			0	0												
<i>Quercus spp.</i>			0	0												
<i>Taxodium distichum</i>			0	0												
<b>Total planted stems per plot</b>			<b>11</b>	<b>0</b>												
<b>Total planted stems per acre</b>			<b>445.2</b>													

**Planted and volunteer stems per acre**

**607.1**



**Table 58. Plot 16-3. 2008 Monitoring Data - Little Contentnea Creek Riparian Buffer Restoration - Phase 3 - Greene County, NC.**

Species	Diameter (cm)	Height (cm)	Diameter (cm)	Height (cm)
<i>Fraxinus pennsylvanica</i>	0.4	53	1.3	120
<i>Liriodendron tulipifera</i>				
<i>Nyssa biflora</i>				
<i>Platanus occidentalis</i>				
<i>Quercus falcata</i>				
<i>Quercus lyrata</i>				
<i>Quercus nigra</i>				
<i>Quercus michauxii</i>				
<i>Quercus phellos</i>				
<i>Quercus rubra</i>				
<i>Quercus virginiana</i>				
<i>Quercus spp.</i>				
<i>Taxodium distichum</i>				
<b>Total planted stems per plot</b>				
<b>Total planted stems per acre</b>				

**Planted and volunteer stems per acre**



**Table 59. Plot 17-1. 2008 Monitoring Data - Little Contentnea Creek Riparian Buffer Restoration - Phase 3 - Greene County, NC.**

Species	Average Diameter (cm)	Average Height (cm)	Total Live Stems	Total Dead	Diameter (cm)	Height (cm)	Diameter (cm)	Height (cm)	Diameter (cm)	Height (cm)	Diameter (cm)	Height (cm)	Diameter (cm)	Height (cm)	Diameter (cm)	Height (cm)
<i>Fraxinus pennsylvanica</i>	0.85	76.00	2	2	1	89	d	d	d	d	0.7	63				
<i>Liriodendron tulipifera</i>	0.63	72.25	4	0	0.4	30	0.7	178	1.1	59	0.3	22				
<i>Nyssa biflora</i>			0	0												
<i>Platanus occidentalis</i>			0	0												
<i>Quercus falcata</i>			0	0												
<i>Quercus lyrata</i>			0	0												
<i>Quercus nigra</i>	1.00	122.00	1	0	1	122										
<i>Quercus michauxii</i>			0	0												
<i>Quercus phellos</i>			0	0												
<i>Quercus rubra</i>			0	0												
<i>Quercus virginiana</i>			0	0												
<i>Quercus spp.</i>			0	0												
<i>Taxodium distichum</i>			0	0												
<b>Total planted stems per plot</b>			<b>7</b>	<b>2</b>												
<b>Total planted stems per acre</b>			<b>283.3</b>													

Planted and volunteer stems per acre

526.1



**Table 60. Plot 17-2. 2008 Monitoring Data - Little Contentnea Creek Riparian Buffer Restoration - Phase 3 - Greene County, NC.**

Species	Average Diameter (cm)	Average Height (cm)	Total Live Stems	Total Dead	Diameter (cm)	Height (cm)	Diameter (cm)	Height (cm)	Diameter (cm)	Height (cm)	Diameter (cm)	Height (cm)	Diameter (cm)	Height (cm)	Diameter (cm)	Height (cm)
<i>Fraxinus pennsylvanica</i>			0	0												
<i>Liriodendron tulipifera</i>	0.74	114.60	5	0	0.4	142	1.1	98	0.5	66	1.4	125	0.3	142		
<i>Nyssa biflora</i>			0	0												
<i>Platanus occidentalis</i>			0	0												
<i>Quercus falcata</i>			0	0												
<i>Quercus lyrata</i>	1.00	104.00	1	0	1	104										
<i>Quercus nigra</i>	0.55	74.00	2	0	0.4	71	0.7	77								
<i>Quercus michauxii</i>			0	0												
<i>Quercus phellos</i>	0.80	96.00	2	0	0.9	110	0.7	82								
<i>Quercus rubra</i>			0	0												
<i>Quercus virginiana</i>			0	0												
<i>Quercus spp.</i>			0	0												
<i>Taxodium distichum</i>			0	0												
<b>Total planted stems per plot</b>			<b>10</b>	<b>0</b>												
<b>Total planted stems per acre</b>			<b>404.7</b>													

Planted and volunteer stems per acre

404.7



**Table 61. Plot 17-3. 2008 Monitoring Data - Little Contentnea Creek Riparian Buffer Restoration - Phase 3 - Greene County, NC.**

Species	Average Diameter (cm)	Average Height (cm)	Total Live Stems	Total Dead	Diameter (cm)	Height (cm)	Diameter (cm)	Height (cm)	Diameter (cm)	Height (cm)	Diameter (cm)	Height (cm)	Diameter (cm)	Height (cm)	Diameter (cm)	Height (cm)
<i>Fraxinus pennsylvanica</i>	1.07	43.67	3	0	1.4	43	1.1	41	0.7	47						
<i>Liriodendron tulipifera</i>	1.17	87.00	3	0	0.5	40	1.4	92	1.6	129						
<i>Nyssa biflora</i>			0	0												
<i>Platanus occidentalis</i>			0	0												
<i>Quercus falcata</i>			0	0												
<i>Quercus lyrata</i>			0	0												
<i>Quercus nigra</i>	2.20	125.00	1	0	2.2	125										
<i>Quercus michauxii</i>			0	0												
<i>Quercus phellos</i>	1.23	89.00	3	0	1.6	84	1.2	112	0.9	71						
<i>Quercus rubra</i>			0	0												
<i>Quercus virginiana</i>			0	0												
<i>Quercus spp.</i>			0	0												
<i>Taxodium distichum</i>			0	0												
<b>Total planted stems per plot</b>			<b>10</b>	<b>0</b>												
<b>Total planted stems per acre</b>			<b>404.7</b>													

Planted and volunteer stems per acre

404.7

