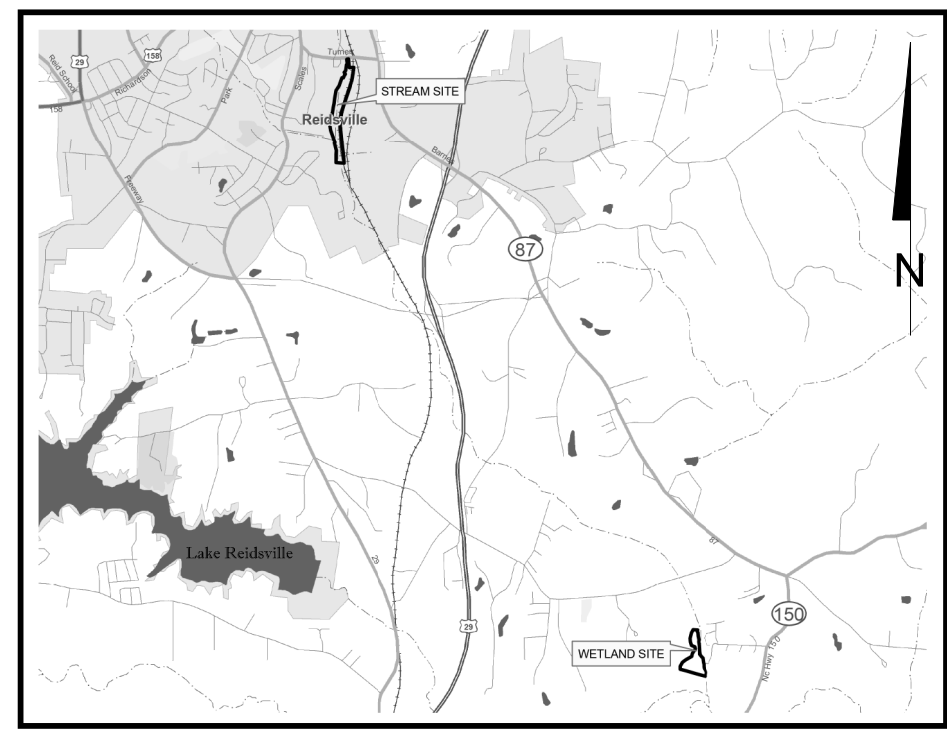


# Little Troublesome Creek Mitigation Site

## Rockingham County, NC

### Cape Fear River Basin Cataloging Unit 03030002

### for North Carolina Ecosystem Enhancement Program



Vicinity Map  
Not to Scale



RECORD DRAWING  
ISSUED SEPTEMBER 5, 2012

REACH ORGINS		
Reach	Latitude	Longitude
Irvin Creek Reach 1	N 36° 20' 18.11"	W 79° 39' 25.27"
Irvin Creek Reach 2	N 36° 20' 02.80"	W 79° 39' 29.31"
Little Troublesome Creek	N 36° 19' 48.21"	W 79° 39' 31.19"
UTI	N 36° 19' 44.62"	W 79° 39' 28.32"

Sheet Index	
Cover Sheet	0.1
Legend	0.2
Stream Overlay Overview	1.0
Stream Overlay Plans	1.1-1.11
Wetland Overlay Overview	2.0
Wetland Overlay Plans	2.1-2.2
Stream Overlay Planting	3.1
Wetland Overlay Planting	4.1

Project Directory	
<b>Engineering:</b> Wildlands Engineering, Inc License No. F-0831 5605 Chapel Hill Road Suite 122 Raleigh, NC 27607 Jeff Keaton, PE 919-851-9986	<b>Owner:</b> Ecosystem Enhancement Program NC Department of Environment and Natural Resources 1652 Mail Service Center Raleigh, NC 27699-1652 Guy Pearce 919-715-1157
<b>Surveying (Stream):</b> Turner Land Surveying, PLLC License No. P-0702 3201 Glenridge Drive Raleigh, NC 27604 Elisabeth G. Turner, PLS 919-875-1378	<b>Contractor:</b> Fluvial Solutions, Inc PO Box 28749 Raleigh, NC 27611 919-605-6134
<b>Surveying (Wetland):</b> CE Robertson and Associates, PC License No. P-2928 PO Box 584 Eden, NC 27289 Gene Robertson, PLS 336-627-0498	DENR Contract No. 003267 EEP Project No. 94640

Little Troublesome Creek Mitigation Site  
 Rockingham County, NC  
 Cover Sheet

Date: September 5, 2012  
 Job Number: 005-12700  
 Project Engineer: JNK  
 Drawn By: JTL  
 Checked By: JWH

COVER SHEET

Sheet  
**0.1**

Final Record Drawing

**LEGEND**

- Existing Property Line
- Existing Utility Easement
- Existing Sanitary Sewer Line
- Existing Gas Line
- Existing Power Pole
- Existing Power Line Tower
- Existing Railroad Tracks
- Existing Paved Road
- Existing Building
- Bedrock

- Conservation Easement
- Proposed Channel Centerline
- Proposed Bankfull
- Proposed Major Contour
- Proposed Minor Contour
- Preconstruction Major Contour
- Preconstruction Minor Contour

- Proposed Root Wads
- Proposed Log Vane
- Proposed Constructed Riffle
- Proposed Rock Cross Vane
- Proposed Drainage Berm
- Proposed Brush Toe Protection
- Proposed Ephemeral Pool

- As-Built Channel Centerline
- As-Built Bankfull
- As-Built Major Contour
- As-Built Minor Contour
- As-Built Constructed Riffle
- As-Built Log Vane
- As-Built Rock Cross Vane
- As-Built J-Hook
- As-Built Ephemeral Pool

- Zone 1 - Stream Bank Planting Zone
- Zone 2 - Floodplain and Wetland Planting Zone
- Zone 3 - Easements (Seed Only)
- Zone 4 - Wetland Trees Only

- Wetland Restoration
- Wetland Enhancement
- Wetland Creation
- Berm Cuts

Final Record Drawing

Date: September 5, 2012  
Job Number: 005-12700  
Project Engineer: JNK  
Drawn By: JTL  
Checked By: JWH

Revisions  
Revised Per DLQ Comments 8/9/11

**LEGEND**

Sheet

0.2

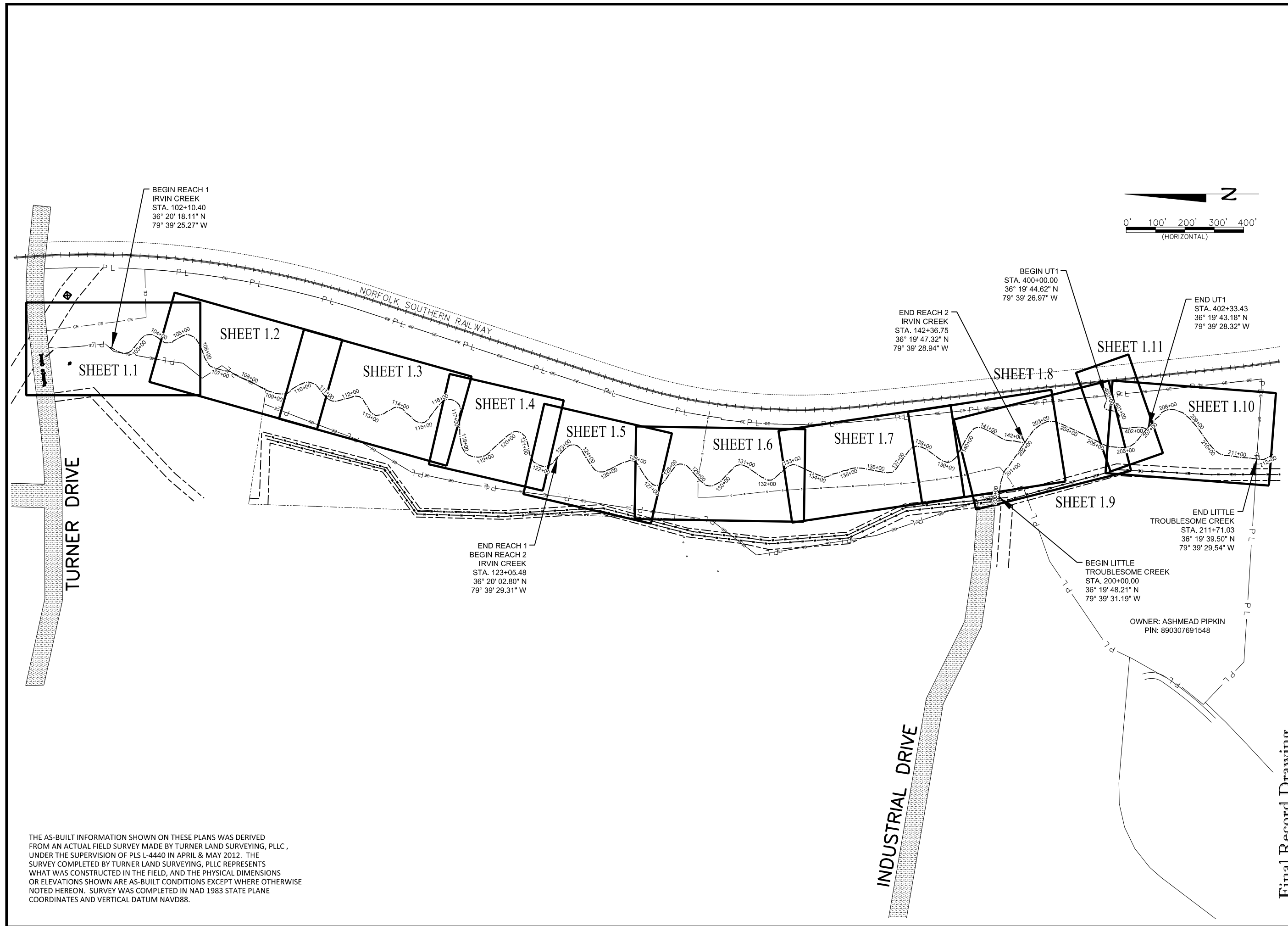
NOTE: FEATURES IN RED INDICATE DEVIATION FROM DESIGN PLANS.

Little Troublesome Creek Mitigation Site  
Rockingham County, NC  
Stream Overlay Overview

Date:	September 5, 2012
Job Number:	005-12700
Project Engineer:	JNK
Drawn By:	JTL
Checked By:	JWH

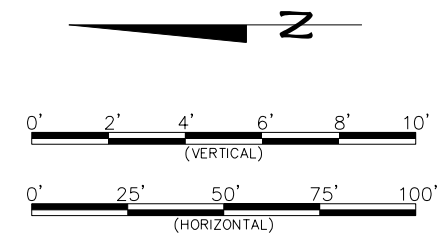
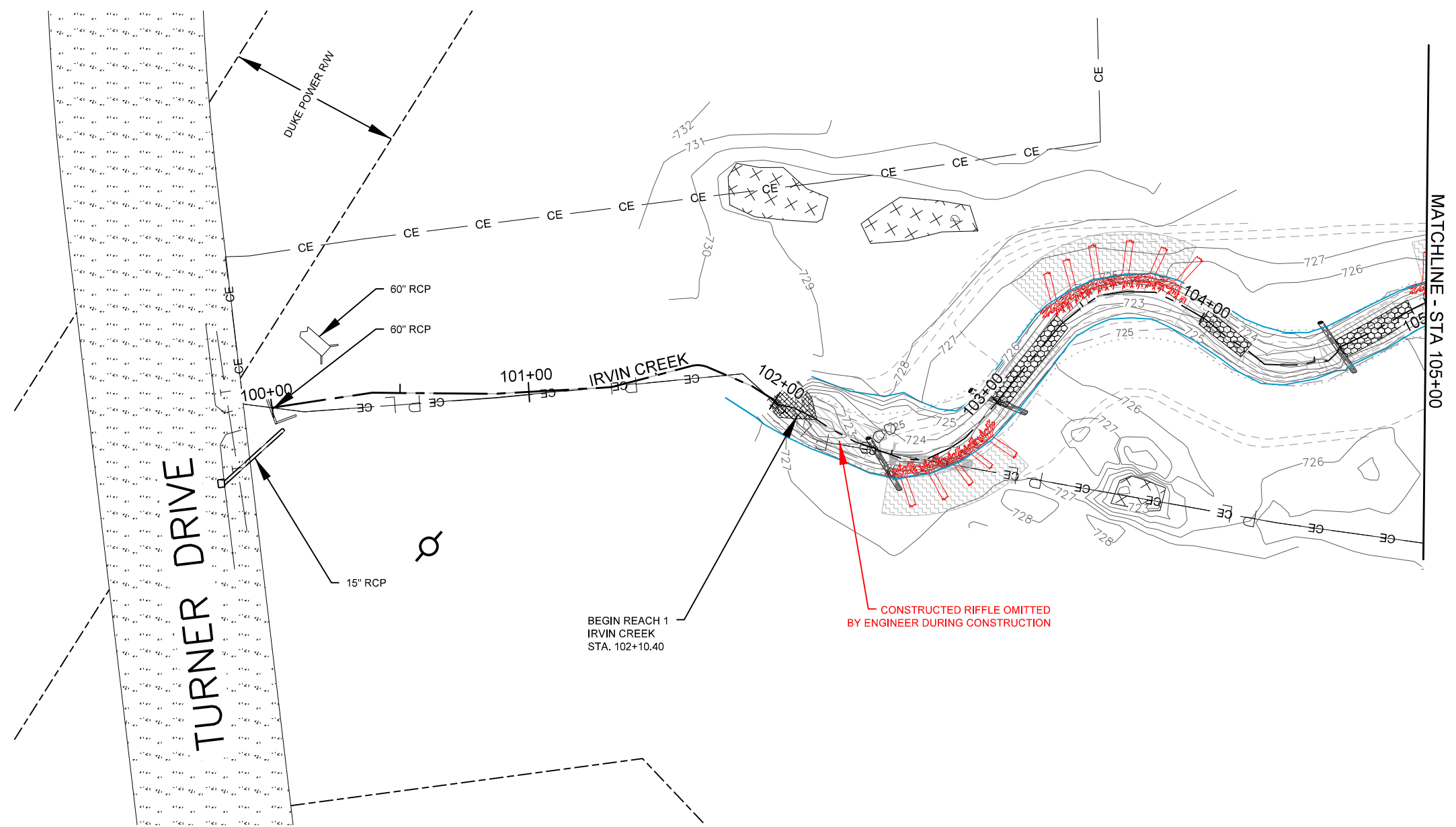
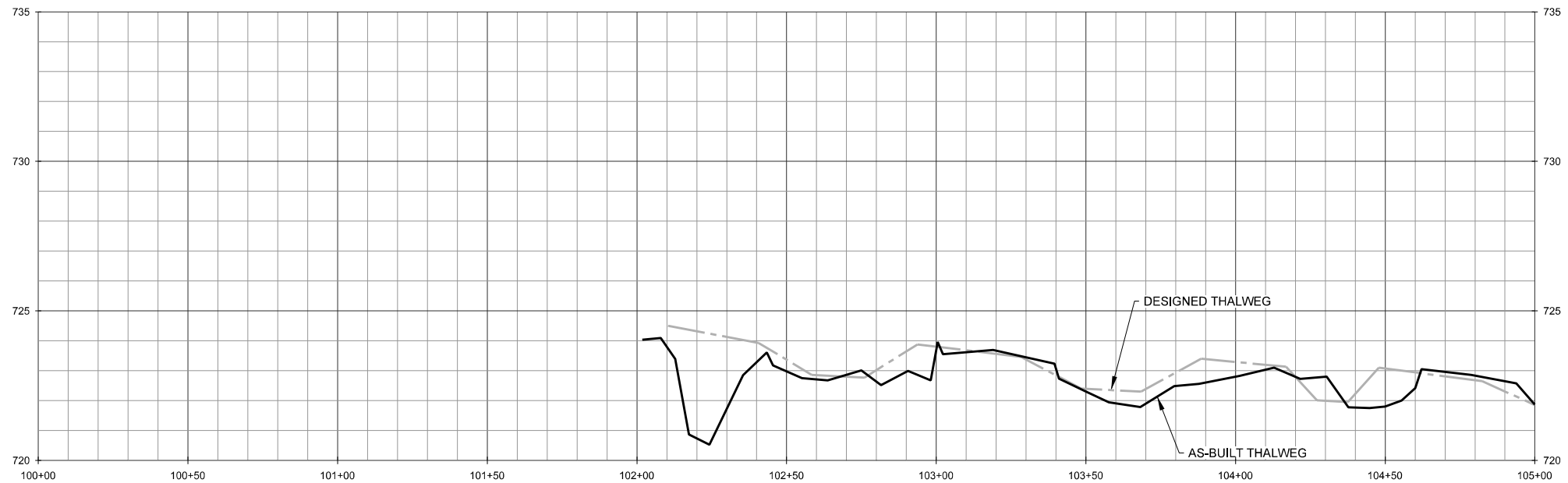
Revisions


**STREAM  
OVERLAY  
OVERVIEW**



THE AS-BUILT INFORMATION SHOWN ON THESE PLANS WAS DERIVED FROM AN ACTUAL FIELD SURVEY MADE BY TURNER LAND SURVEYING, PLLC, UNDER THE SUPERVISION OF PLS L-4440 IN APRIL & MAY 2012. THE SURVEY COMPLETED BY TURNER LAND SURVEYING, PLLC REPRESENTS WHAT WAS CONSTRUCTED IN THE FIELD, AND THE PHYSICAL DIMENSIONS OR ELEVATIONS SHOWN ARE AS-BUILT CONDITIONS EXCEPT WHERE OTHERWISE NOTED HEREON. SURVEY WAS COMPLETED IN NAD 1983 STATE PLANE COORDINATES AND VERTICAL DATUM NAVD88.

Final Record Drawing



NOTE: ALL BRUSH TOE WAS REPLACED WITH ROOTWADS PER ENGINEER'S DISCRETION.



**WILDLANDS ENGINEERING, INC.**  
Ecological Restoration Services  
5605 Chapel Hill Road, Suite 122  
Raleigh, NC 27607  
Tel: 919.851.9986  
Fax: 919.851.9987  
Firm License No. F-0831

NORTH CAROLINA PROFESSIONAL SEAL 031027 ENGINEER JEFFERSON N. KEATON  
 SIGNATURE  
 SEPTEMBER 5, 2012  
 DATE

Little Troublesome Creek Mitigation Site  
 Rockingham County, NC  
 Stream Overlay Plans  
 Irvin Creek Reach 1 Plan and Profile

Final Record Drawing

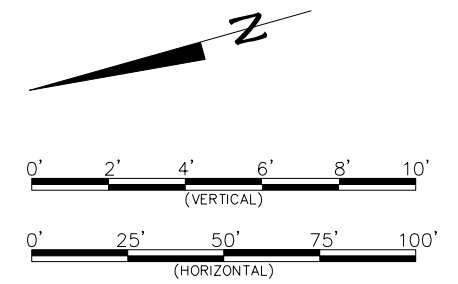
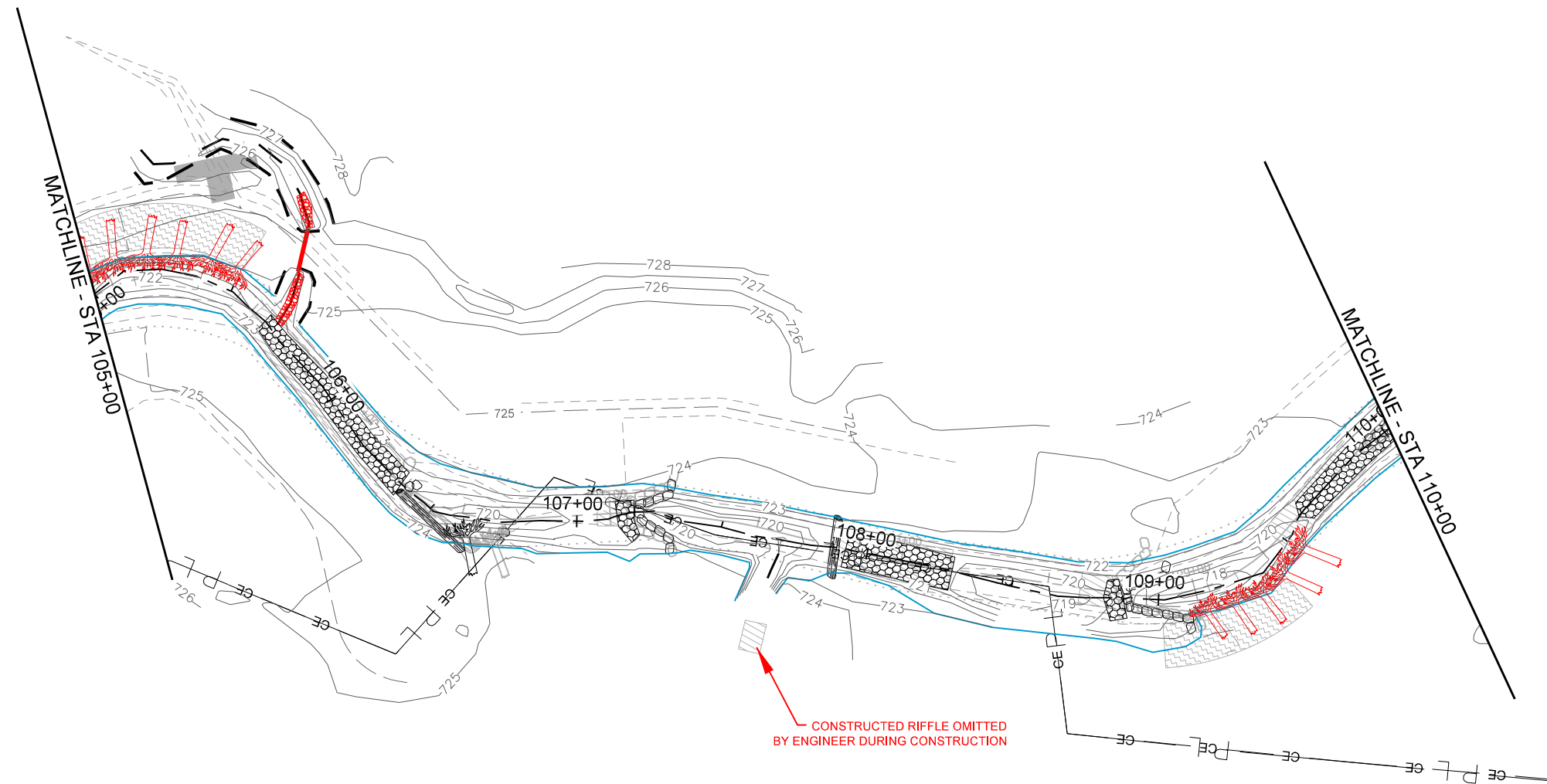
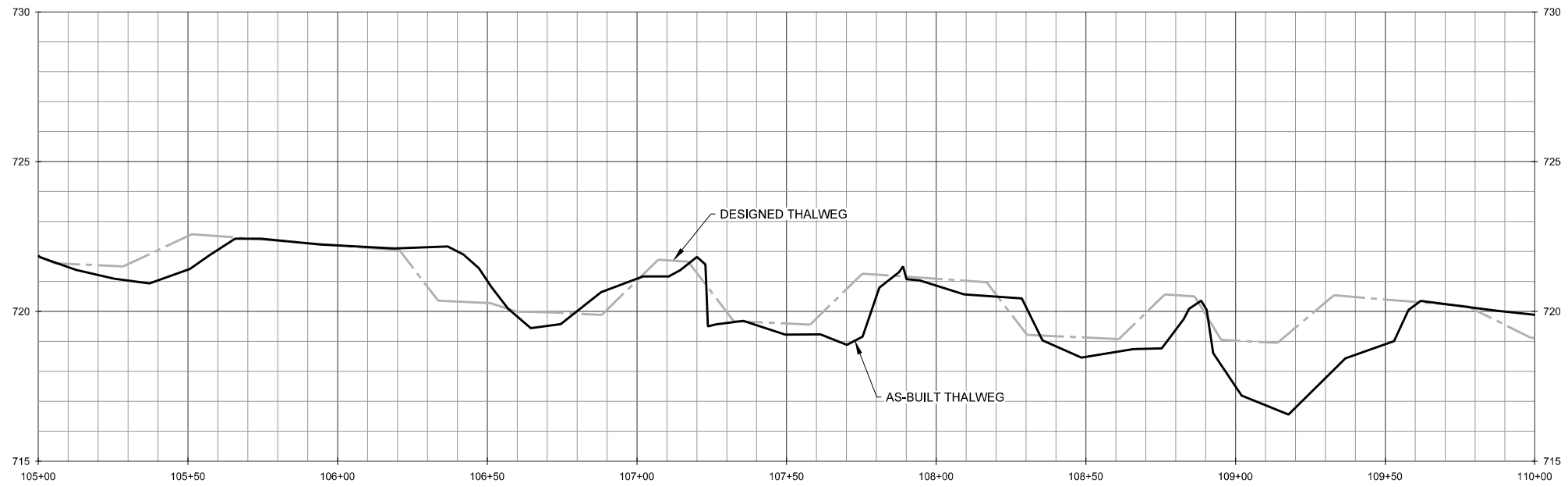
Date:	September 5, 2012
Job Number:	005-12700
Project Engineer:	JNK
Drawn By:	JTL
Checked By:	JWH
Revisions:	

STREAM OVERLAY PLANS

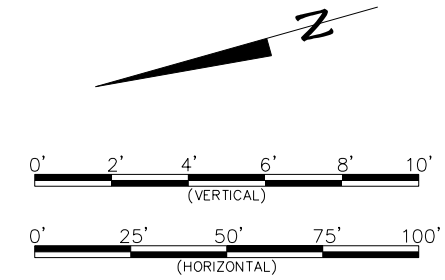
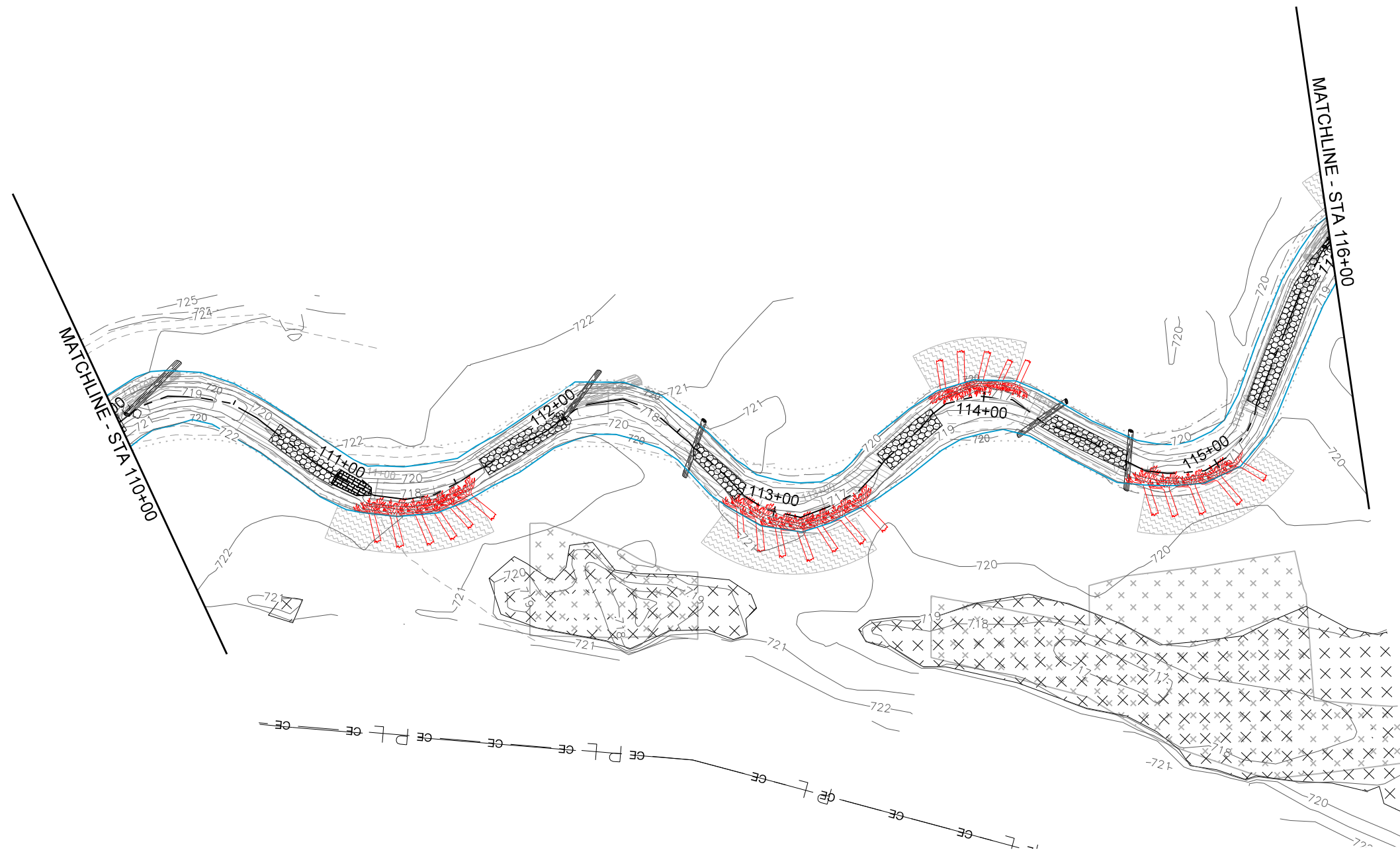
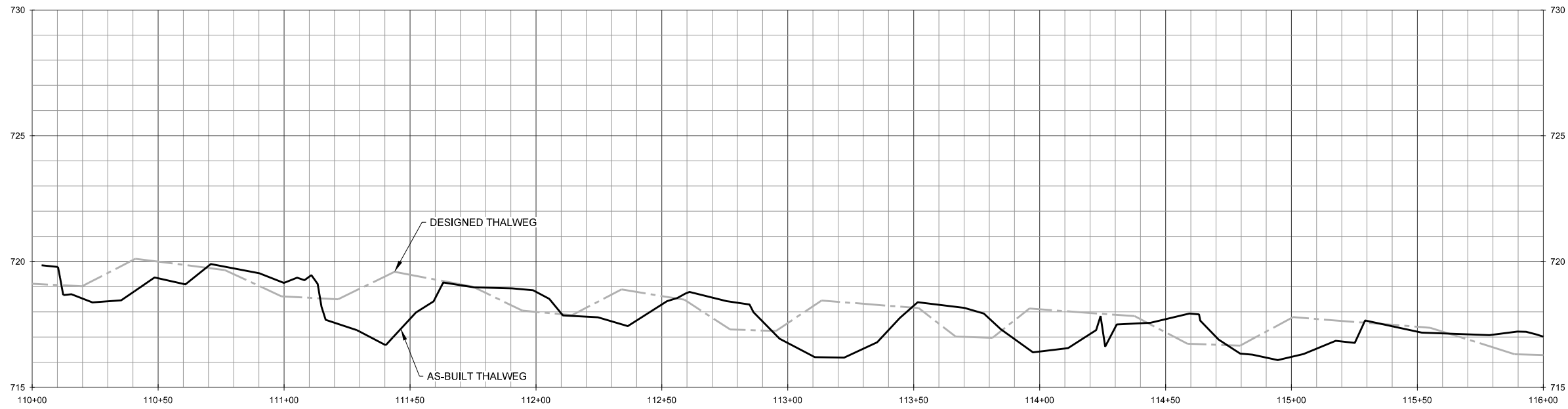
Sheet

1.1





NOTE: ALL BRUSH TOE WAS REPLACED WITH ROOTWADS PER ENGINEER'S DISCRETION.



NOTE: ALL BRUSH TOE WAS REPLACED WITH  
ROOTWADS PER ENGINEER'S DISCRETION.



WILDLANDS  
ENGINEERING

WILDLANDS  
ENGINEERING, INC.  
Ecological Restoration  
Services

5605 Chapel Hill Road, Suite 122  
Raleigh, NC 27607  
Tel: 919.851.9986  
Fax: 919.851.9987  
Firm License No. F-0831



SIGNATURE

SEPTEMBER 5, 2012  
DATE

Little Troublesome Creek Mitigation Site  
Rockingham County, NC  
Stream Overlay Plans  
Irvin Creek Reach 1 Plan and Profile

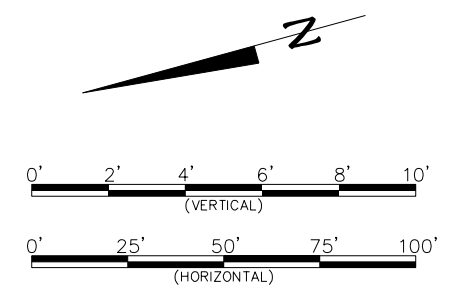
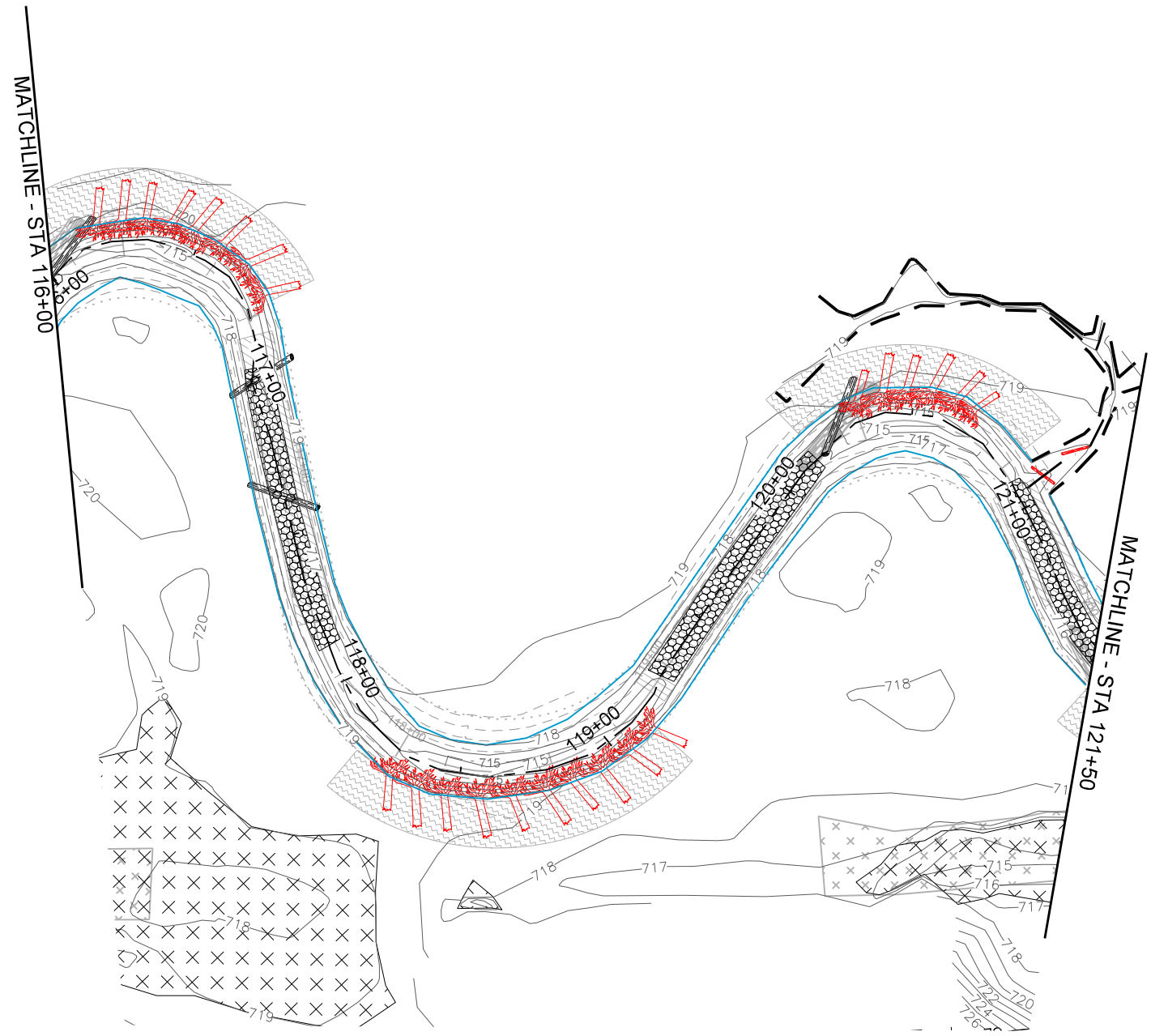
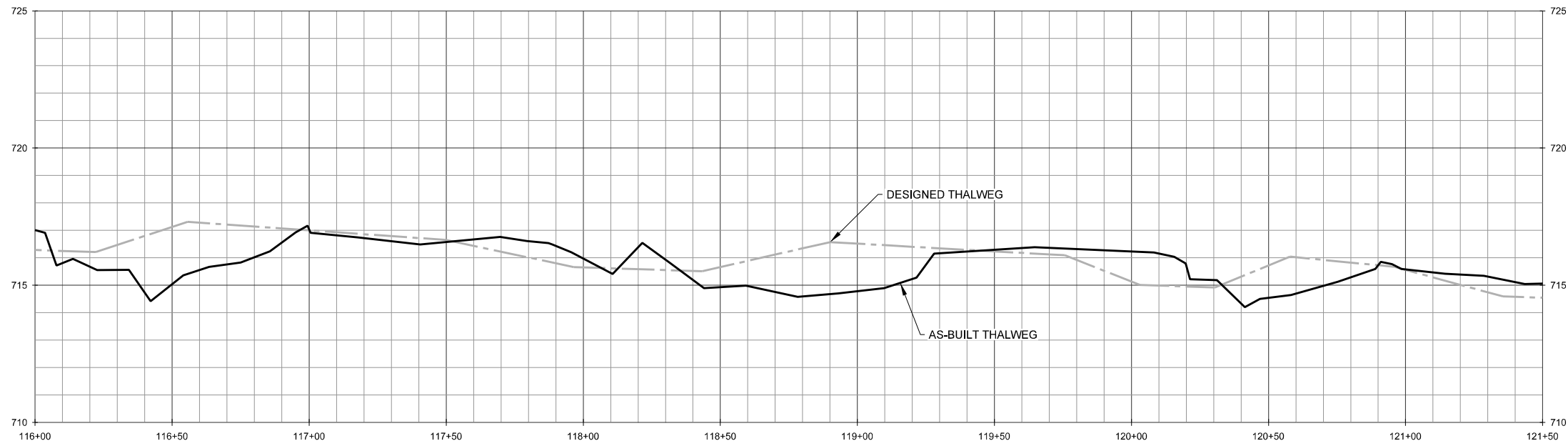
Final Record Drawing

Date:	September 5, 2012
Job Number:	005-12700
Project Engineer:	JNK
Drawn By:	JTL
Checked By:	JWH

Revisions

STREAM  
OVERLAY  
PLANS

Sheet  
13



NOTE: ALL BRUSH TOE WAS REPLACED WITH ROOTWADS PER ENGINEER'S DISCRETION.



**WILDLANDS ENGINEERING, INC.**  
 Ecological Restoration Services  
 5605 Chapel Hill Road, Suite 122  
 Raleigh, NC 27607  
 Tel: 919.851.9986  
 Fax: 919.851.9987  
 Firm License No. F-0831

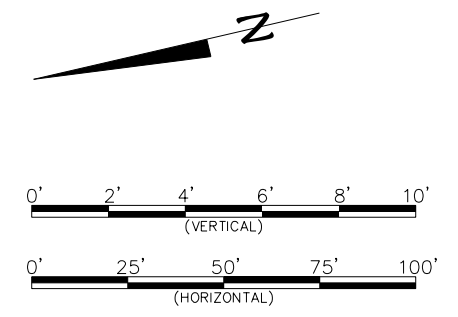
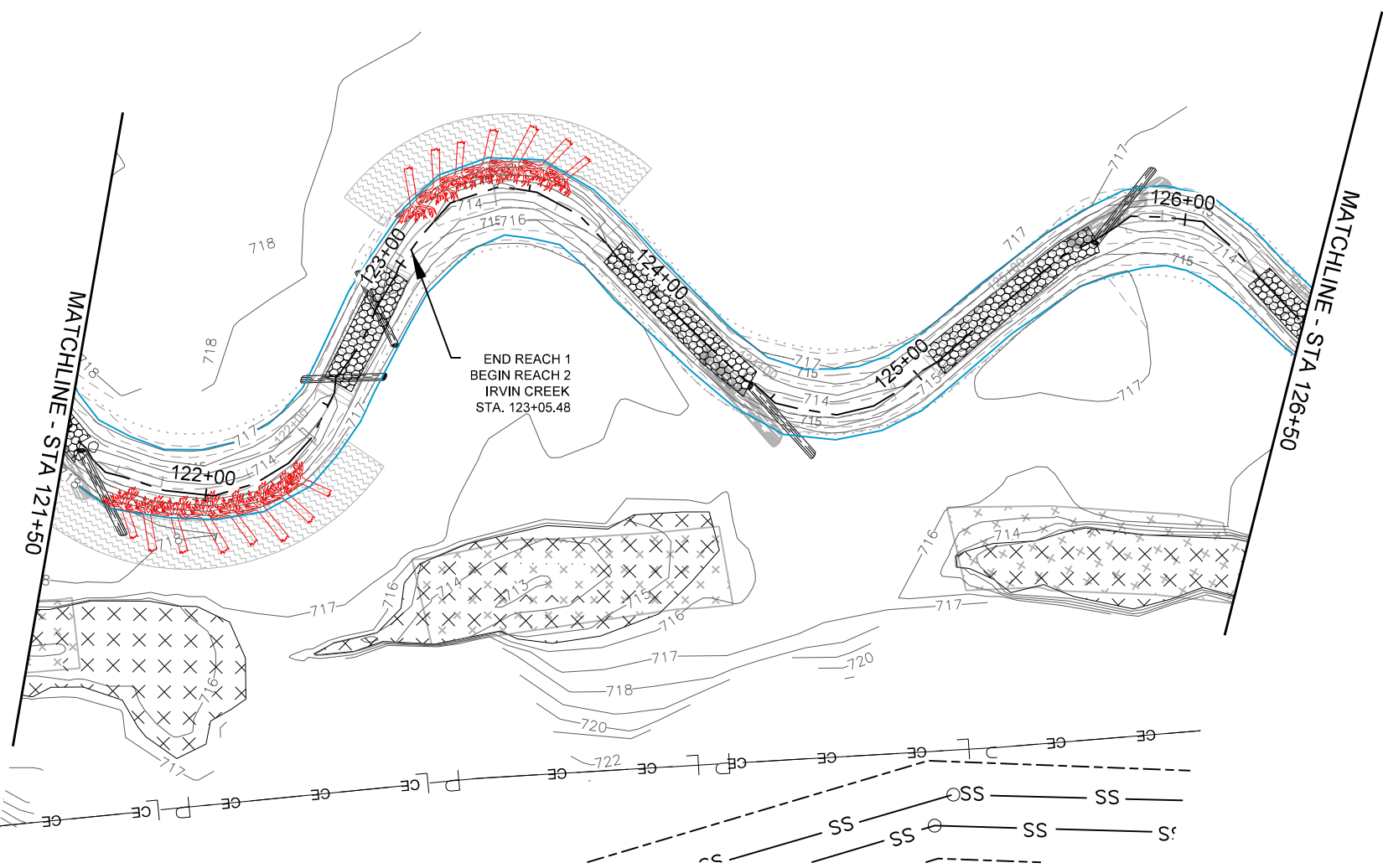
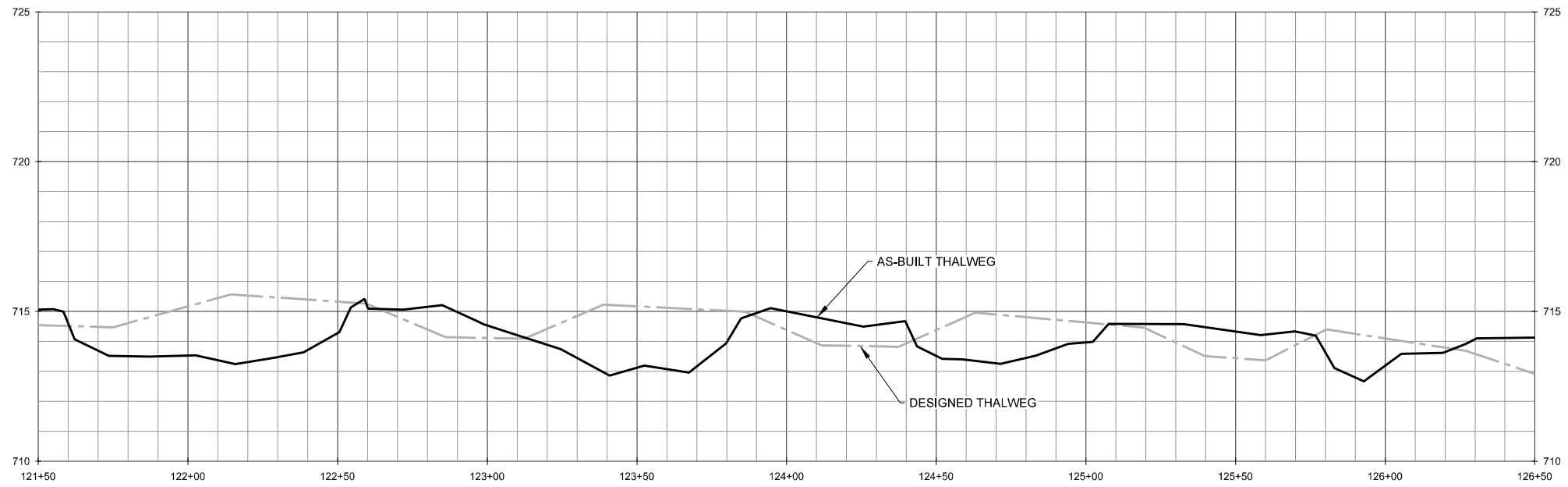
**NORTH CAROLINA PROFESSIONAL SEAL 031027 ENGINEER JEFFERSON N. KENTON**

*Jefferson N. Kenton*  
 SIGNATURE  
 SEPTEMBER 5, 2012  
 DATE

**Little Troublesome Creek Mitigation Site**  
**Rockingham County, NC**  
 Stream Overlay Plans  
 Irvin Creek Reach 1 Plan and Profile

Date:	September 5, 2012
Job Number:	005-12700
Project Engineer:	JNK
Drawn By:	JTL
Checked By:	JWH

**STREAM OVERLAY PLANS**



NOTE: ALL BRUSH TOE WAS REPLACED WITH ROOTWADS PER ENGINEER'S DISCRETION.



WILDLANDS ENGINEERING, INC.  
Ecological Restoration Services  
5605 Chapel Hill Road, Suite 122  
Raleigh, NC 27607  
Tel: 919.851.9986  
Fax: 919.851.9987  
Firm License No. F-0831

NORTH CAROLINA PROFESSIONAL SEAL 031027 ENGINEER JEFFERSON N. KEATON  
  
 SIGNATURE  
 SEPTEMBER 5, 2012  
 DATE

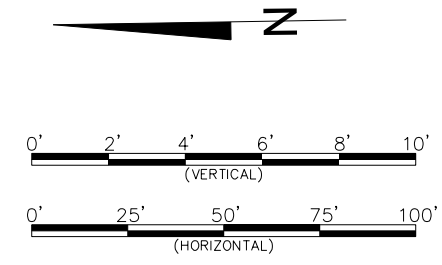
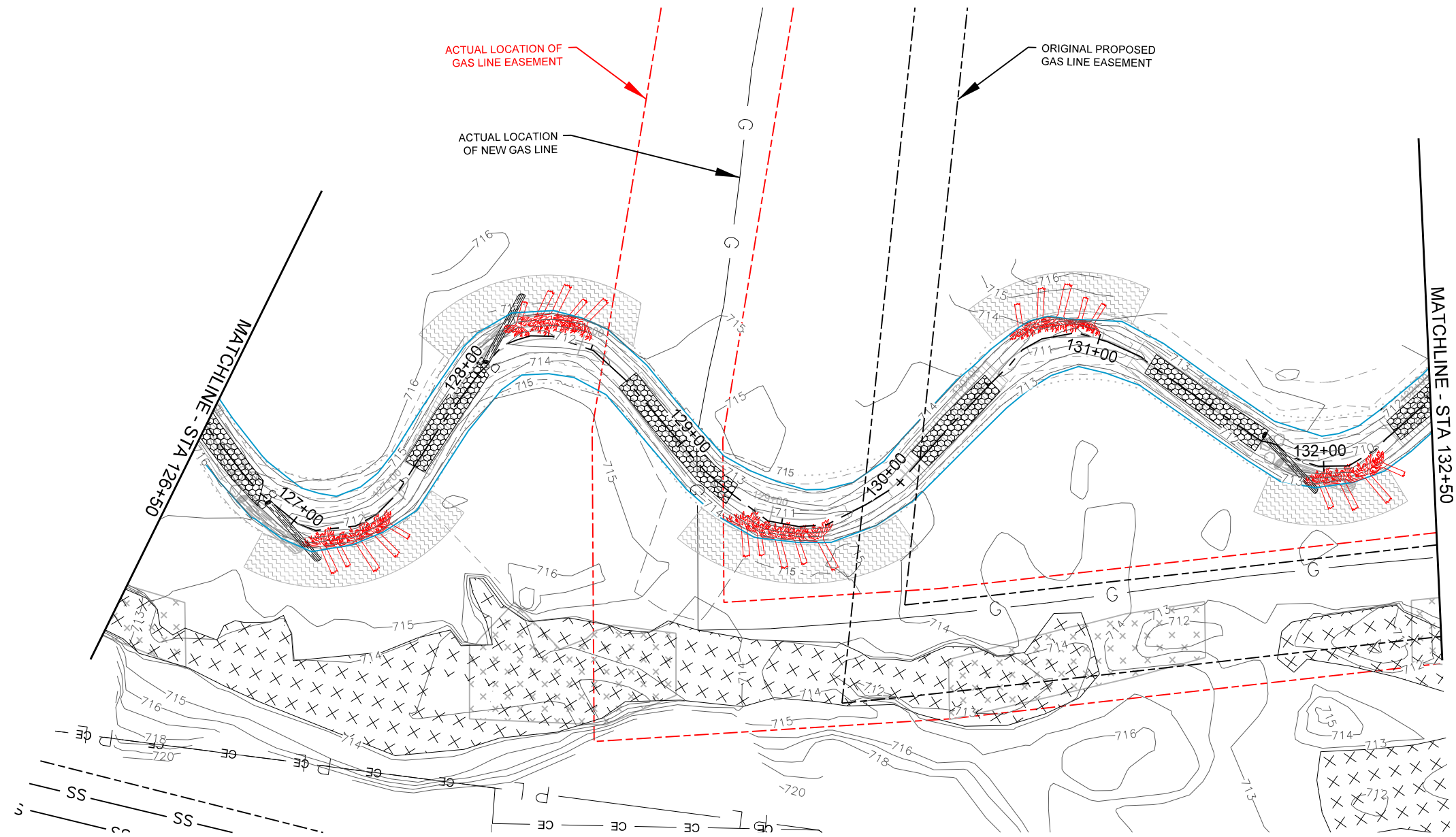
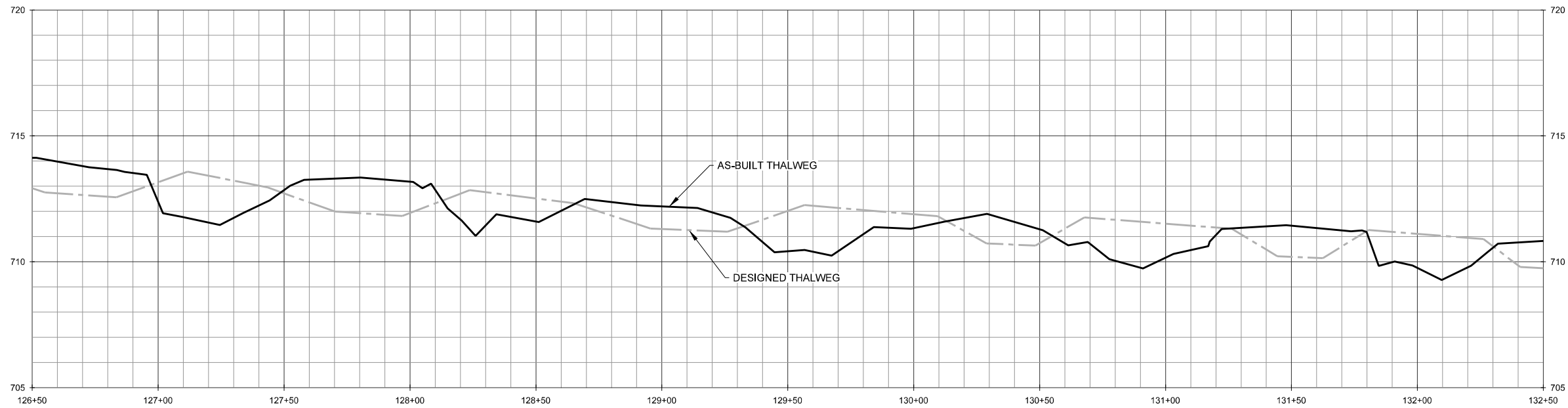
Little Troublesome Creek Mitigation Site  
 Rockingham County, NC  
 Stream Overlay Plans  
 Irvin Creek Reach 1 & 2 Plan and Profile

Date:	September 5, 2012
Job Number:	005-12700
Project Engineer:	JNK
Drawn By:	JTL
Checked By:	JWH
Revisions	

STREAM OVERLAY PLANS

Final Record Drawing





NOTE: ALL BRUSH TOE WAS REPLACED WITH ROOTWADS PER ENGINEER'S DISCRETION.



WILDLANDS ENGINEERING, INC.  
Ecological Restoration Services  
5605 Chapel Hill Road, Suite 122  
Raleigh, NC 27607  
Tel: 919.851.9986  
Fax: 919.851.9987  
Firm License No. F-0831

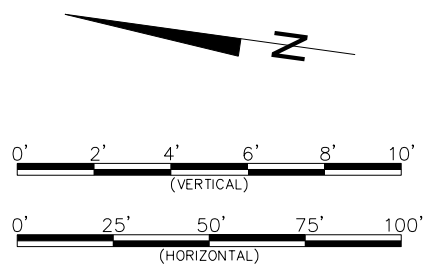
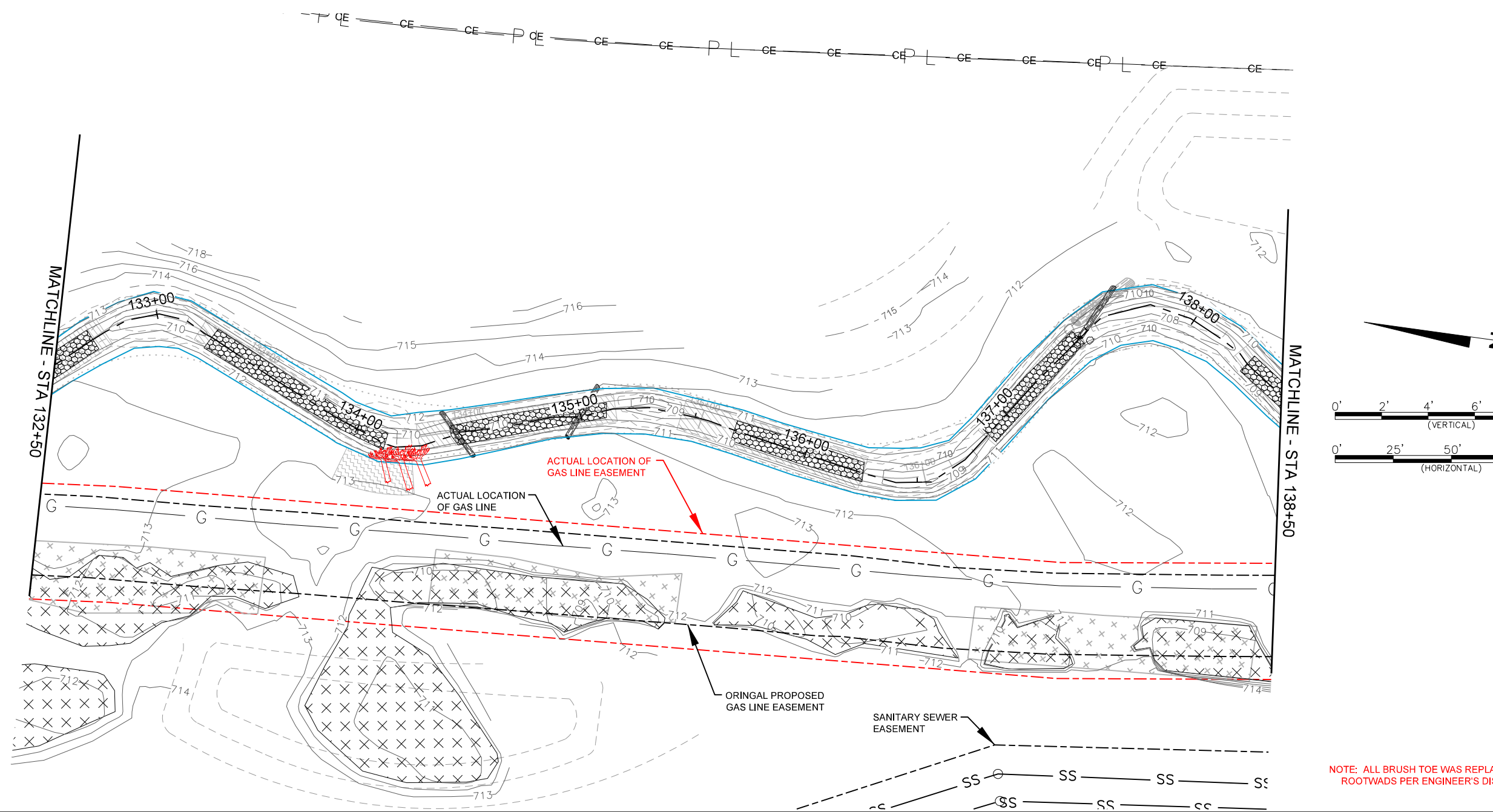
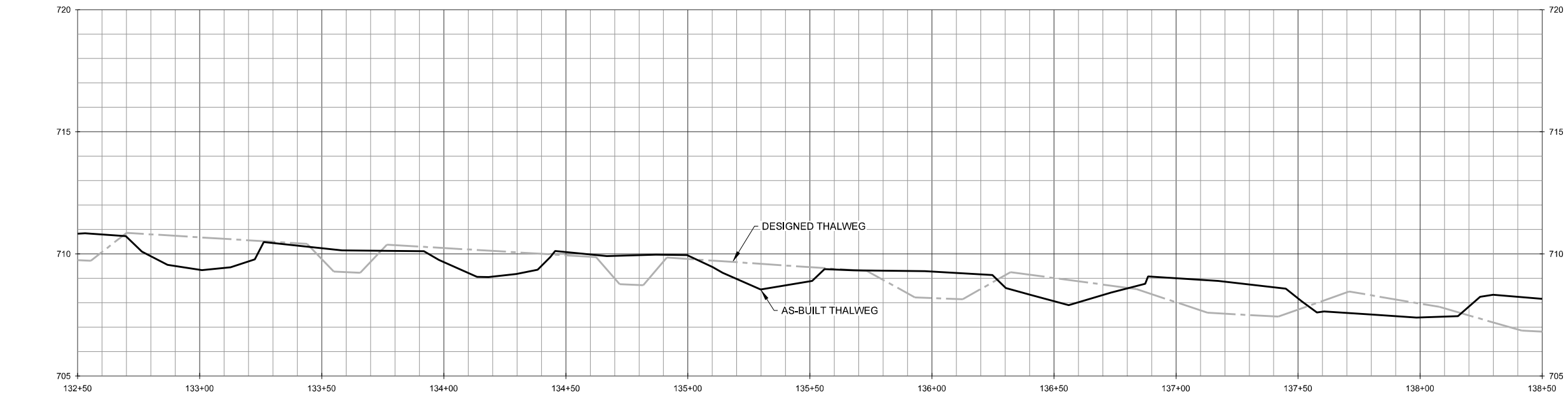
NORTH CAROLINA PROFESSIONAL SEAL 031027 ENGINEER JEFFERSON N. KEATON  
SIGNATURE  
SEPTEMBER 5, 2012  
DATE

Little Troublesome Creek Mitigation Site  
Rockingham County, NC  
Stream Overlay Plans  
Irvin Creek Reach 2 Plan and Profile

Final Record Drawing

Date:	September 5, 2012
Job Number:	005-12700
Project Engineer:	JNK
Drawn By:	JTL
Checked By:	JWH
Revisions:	

STREAM OVERLAY PLANS



NOTE: ALL BRUSH TOE WAS REPLACED WITH ROOTWADS PER ENGINEER'S DISCRETION.

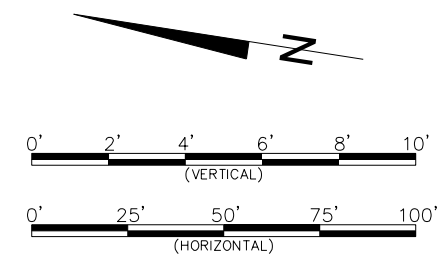
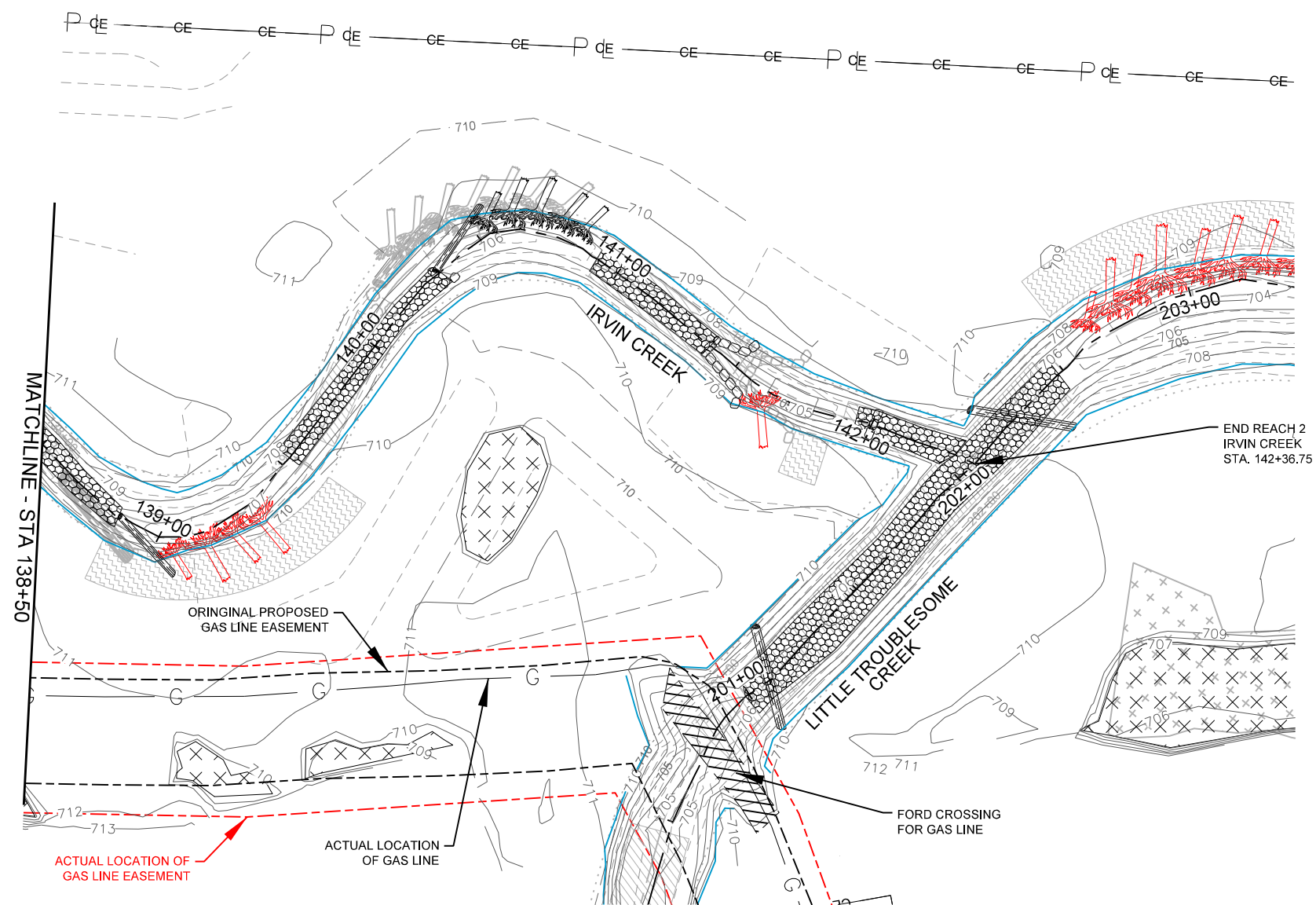
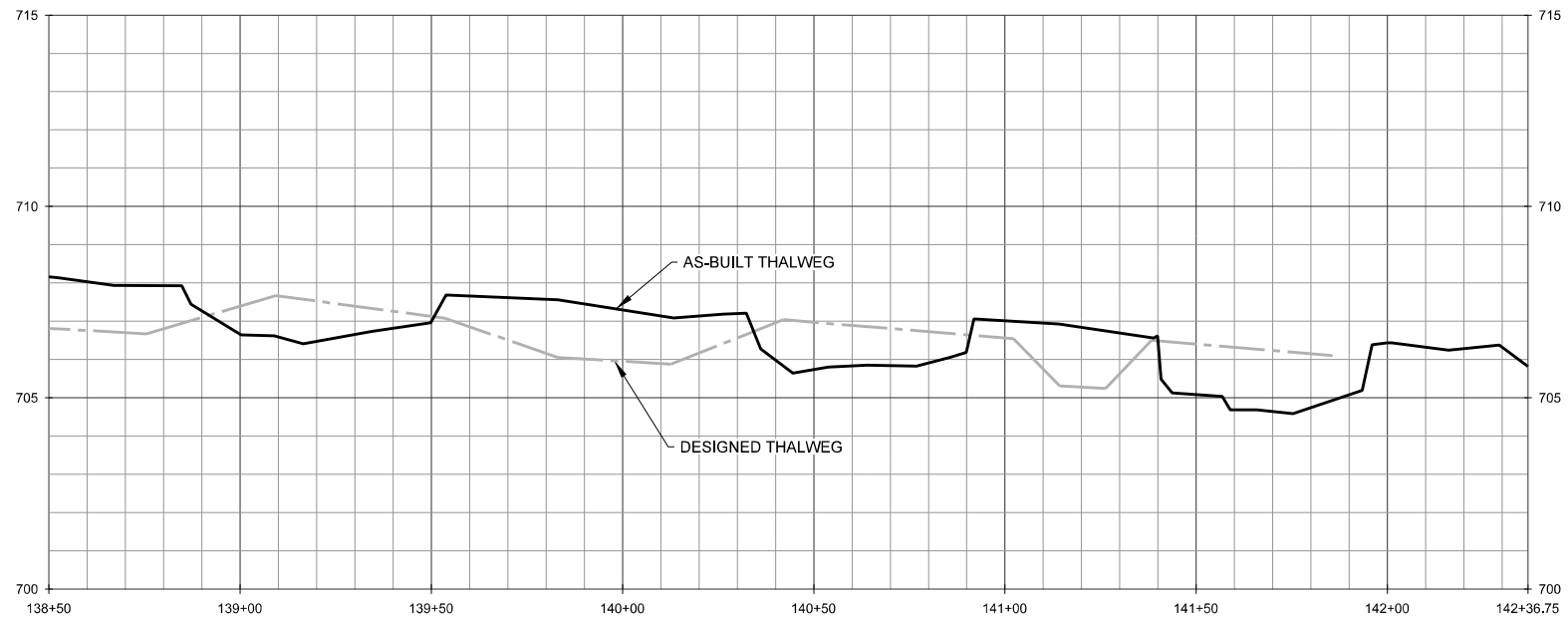
Final Record Drawing

**Little Troublesome Creek Mitigation Site**  
**Rockingham County, NC**  
Stream Overlay Plans  
Irvin Creek Reach 2 Plan and Profile

Date:	September 5, 2012
Job Number:	005-12700
Project Engineer:	JNK
Drawn By:	JTL
Checked By:	JWH

Revisions

**STREAM OVERLAY PLANS**



NOTE: ALL BRUSH TOE WAS REPLACED WITH ROOTWADS PER ENGINEER'S DISCRETION.



WILDLANDS ENGINEERING, INC.  
Ecological Restoration Services  
5605 Chapel Hill Road, Suite 122  
Raleigh, NC 27607  
Tel: 919.851.9986  
Fax: 919.851.9987  
Firm License No. F-0831

NORTH CAROLINA PROFESSIONAL SEAL 031027 ENGINEER JEFFERSON N. KENTON  
SIGNATURE  
SEPTEMBER 5, 2012  
DATE

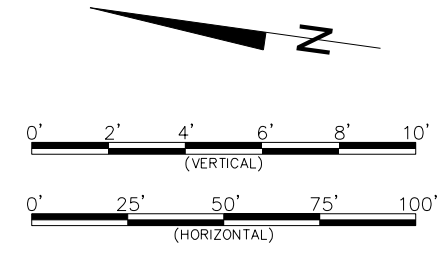
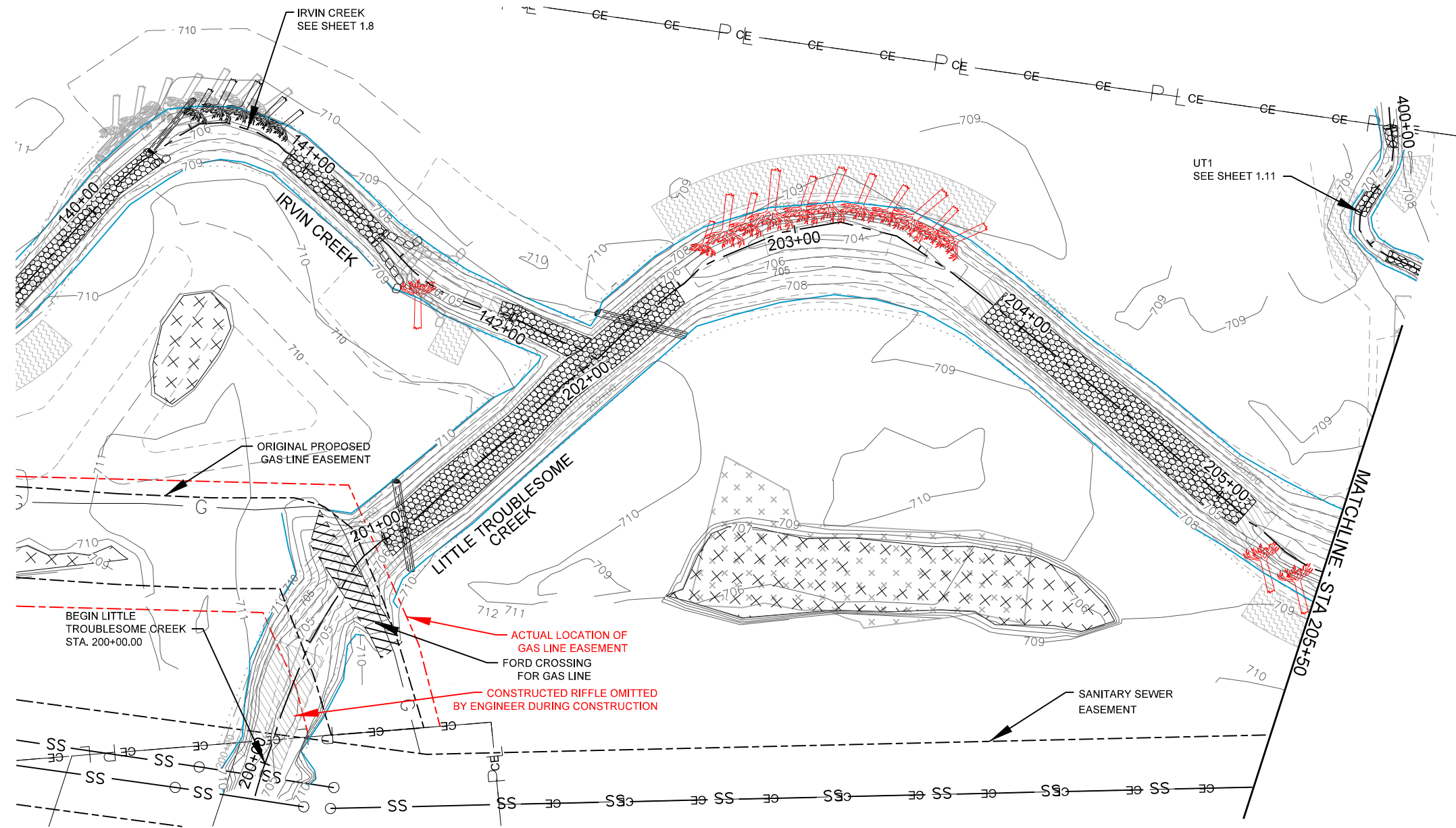
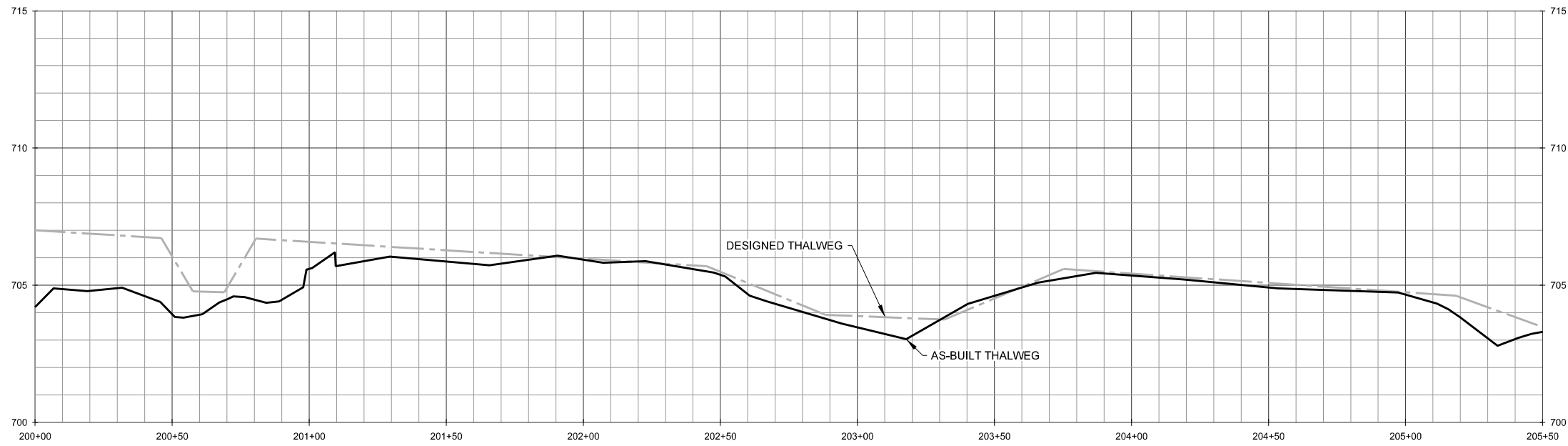
Little Troublesome Creek Mitigation Site  
Rockingham County, NC  
Stream Overlay Plans  
Irvin Creek Reach 2 Plan and Profile

Final Record Drawing

Date:	September 5, 2012
Job Number:	005-12700
Project Engineer:	JNK
Drawn By:	JTL
Checked By:	JWH
Revisions:	

STREAM OVERLAY PLANS





NOTE: ALL BRUSH TOE WAS REPLACED WITH ROOTWADS PER ENGINEER'S DISCRETION.



WILDLANDS ENGINEERING, INC.  
Ecological Restoration Services  
5605 Chapel Hill Road, Suite 122  
Raleigh, NC 27607  
Tel: 919.851.9986  
Fax: 919.851.9987  
Firm License No. F-0831

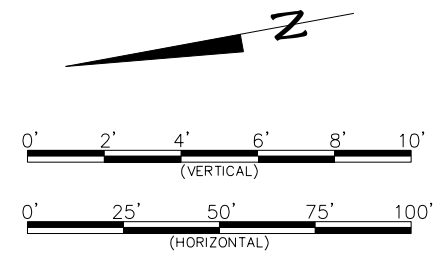
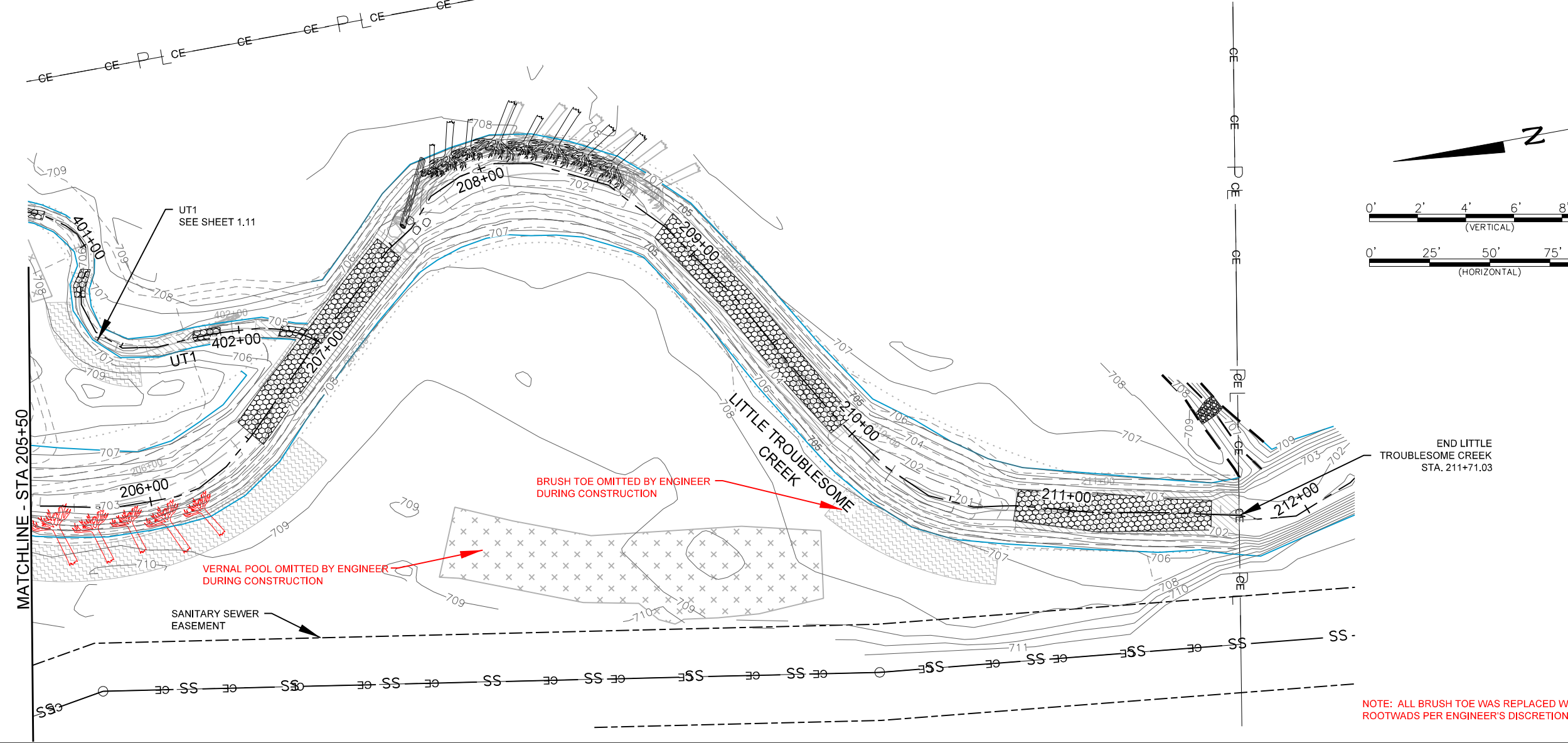
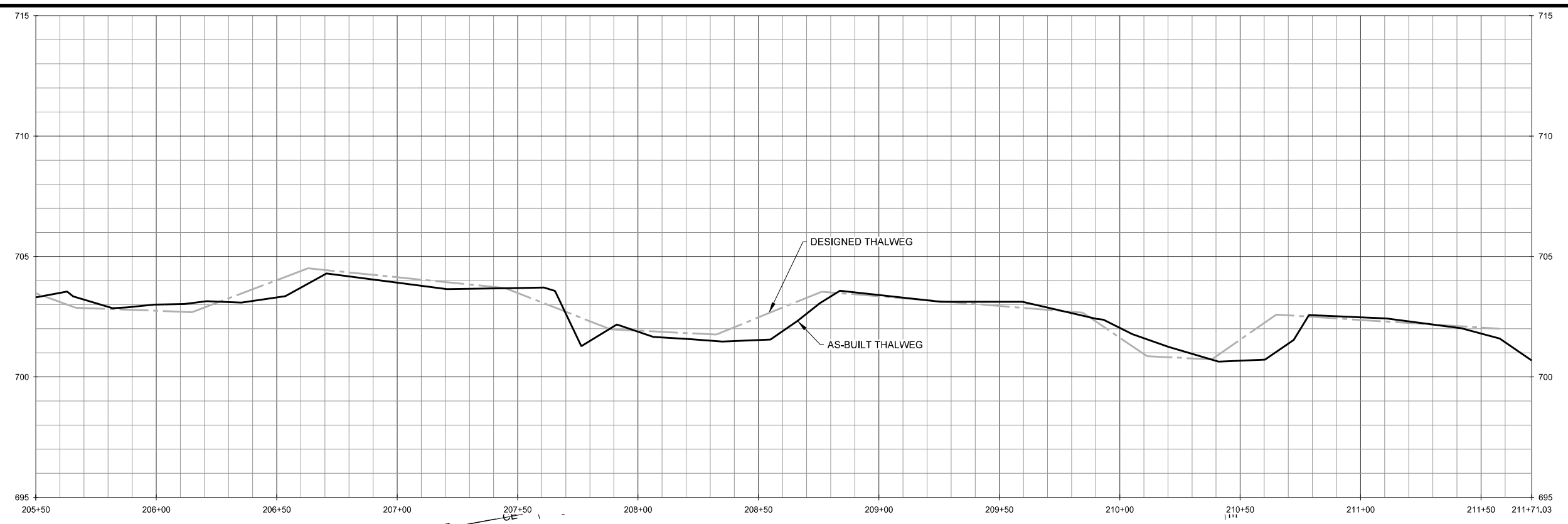
NORTH CAROLINA PROFESSIONAL SEAL 031027 ENGINEER JEFFERSON N. KEATON  
SIGNATURE  
SEPTEMBER 5, 2012  
DATE

Little Troublesome Creek Mitigation Site  
Rockingham County, NC  
Stream Overlay Plans  
Little Troublesome Creek Plan and Profile

Final Record Drawing

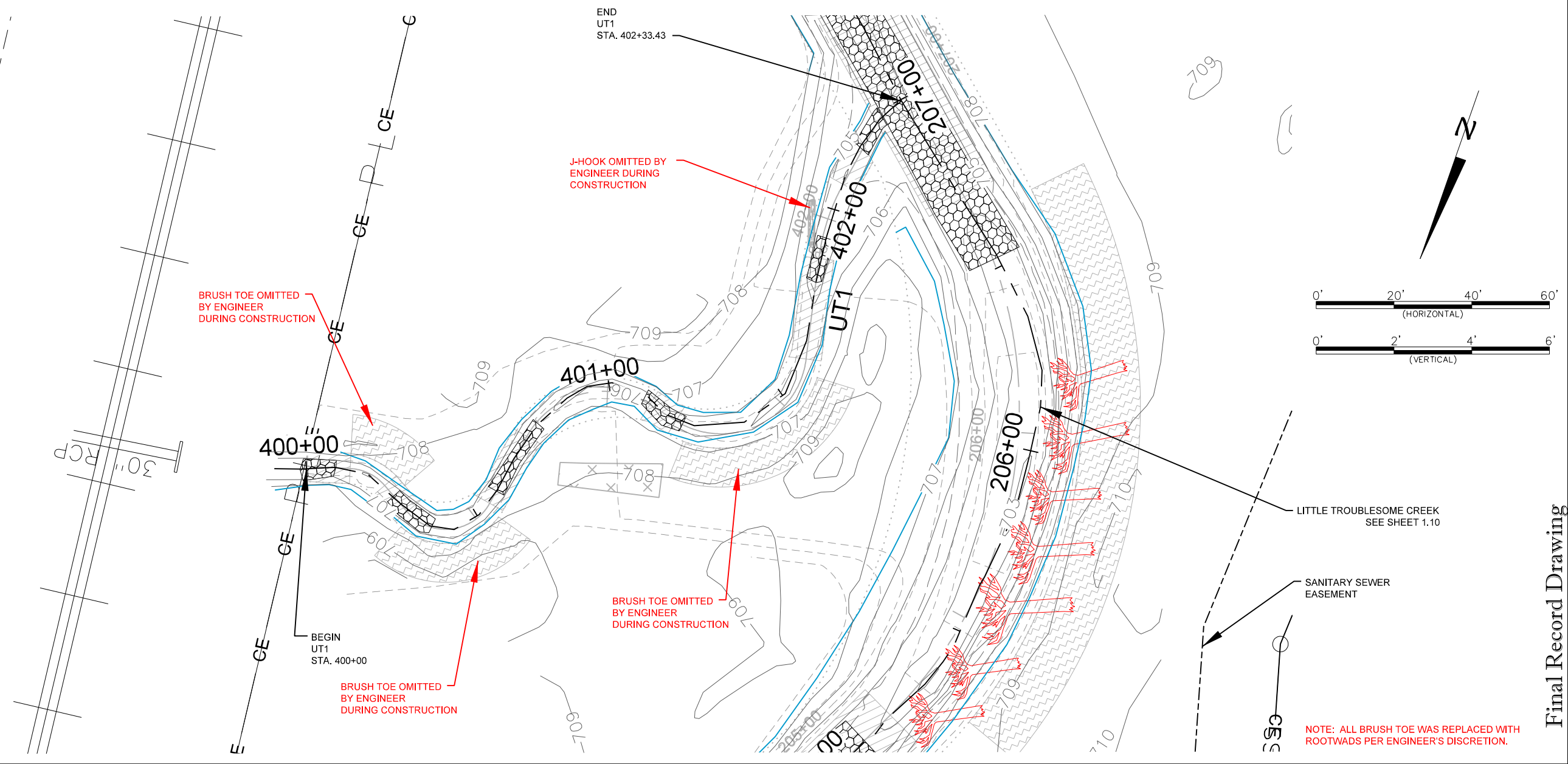
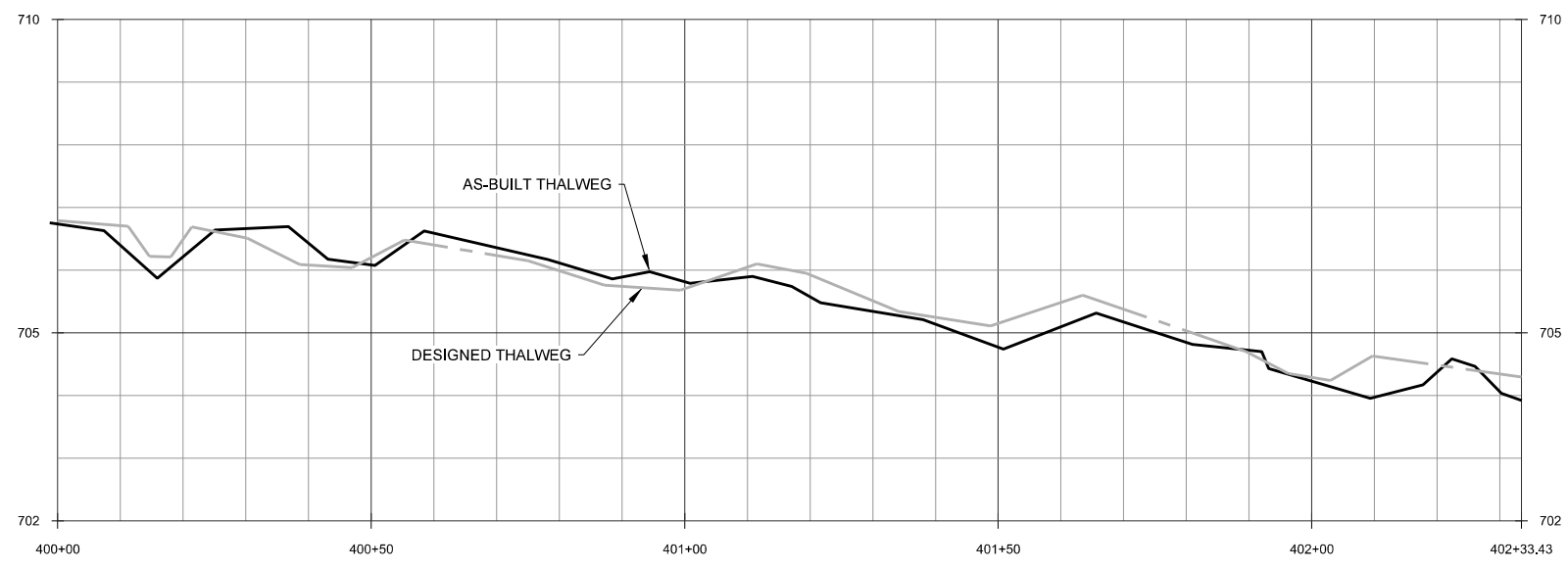
Date:	September 5, 2012
Job Number:	005-12700
Project Engineer:	JNK
Drawn By:	JTL
Checked By:	JWH
Revisions:	

STREAM OVERLAY PLANS



NOTE: ALL BRUSH TOE WAS REPLACED WITH ROOTWADS PER ENGINEER'S DISCRETION.

Final Record Drawing

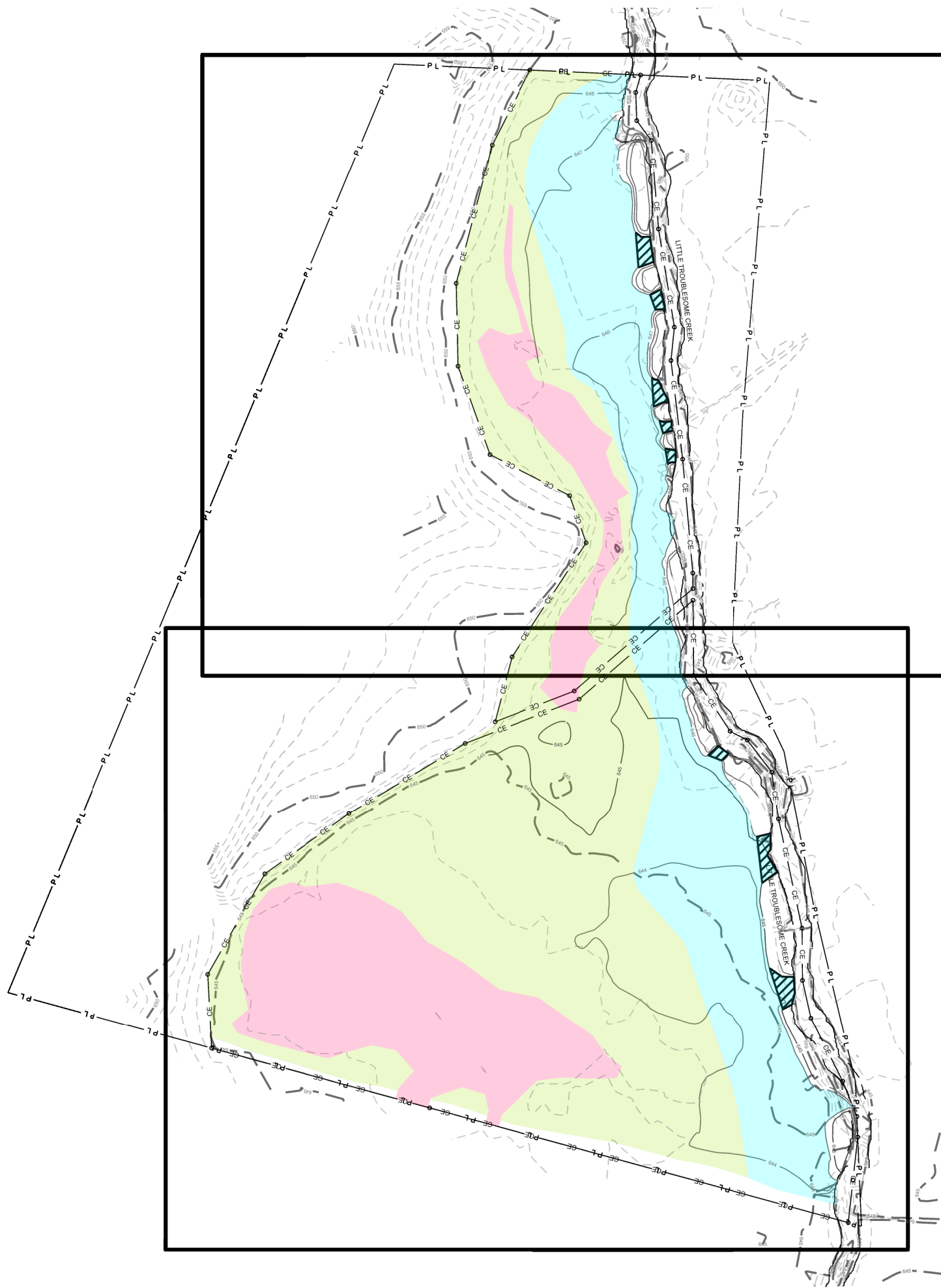


Little Troublesome Creek Mitigation Site  
Rockingham County, NC  
Stream Overlay Plans  
UT1 Plan and Profile

Final Record Drawing

Date:	September 5, 2012
Job Number:	005-12700
Project Engineer:	JNK
Drawn By:	JTL
Checked By:	JWH
Revisions	

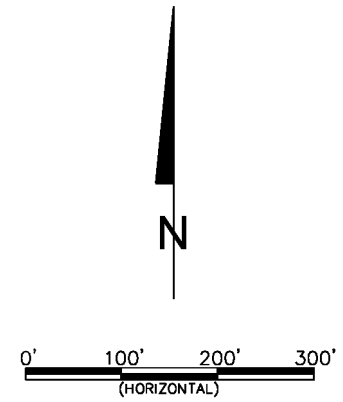




SHEET 2.2

SHEET 2.1

THE AS-BUILT INFORMATION SHOWN ON THESE PLANS WAS DERIVED FROM AN ACTUAL FIELD SURVEY MADE BY C.E. ROBERTSON, UNDER THE SUPERVISION OF PLS L-1421 IN MARCH & APRIL 2012. THE RATIO OF PRECISION AS CALCULATED IS 1:10,000+. THE SURVEY COMPLETED BY CE ROBERTSON IS FOR TOPOGRAPHIC INFORMATION AND LOCATION OF VEGETATION PLOTS ONLY; NO BOUNDARY DETERMINATIONS WERE MADE BY CE ROBERTSON. SURVEY WAS COMPLETED IN NAD 1983 STATE PLANE COORDINATES AND VERTICAL DATUM NAVD88.



**WILDLANDS  
ENGINEERING, INC.**  
Ecological Restoration  
Services  
5605 Chapel Hill Road, Suite 122  
Raleigh, NC 27607  
Tel: 919.851.9986  
Fax: 919.851.9987  
Firm License No. F-0831



Little Troublesome Creek Mitigation Site  
Rockingham County, NC  
Wetland Overlay Overview

Final Record Drawing

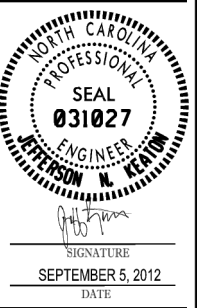
Date:	September 5, 2012
Job Number:	005-12700
Project Engineer:	JNK
Drawn By:	JTL
Checked By:	JWH
Revisions	

**WETLAND  
OVERLAY  
OVERVIEW**

Sheet  
**2.0**



**WILDLANDS ENGINEERING, INC.**  
 Ecological Restoration Services  
 5605 Chapel Hill Road, Suite 122  
 Raleigh, NC 27607  
 Tel: 919.851.9986  
 Fax: 919.851.9987  
 Firm License No. F-0831



**Little Troublesome Creek Mitigation Site  
 Rockingham County, NC  
 Wetland Overlay Plans**

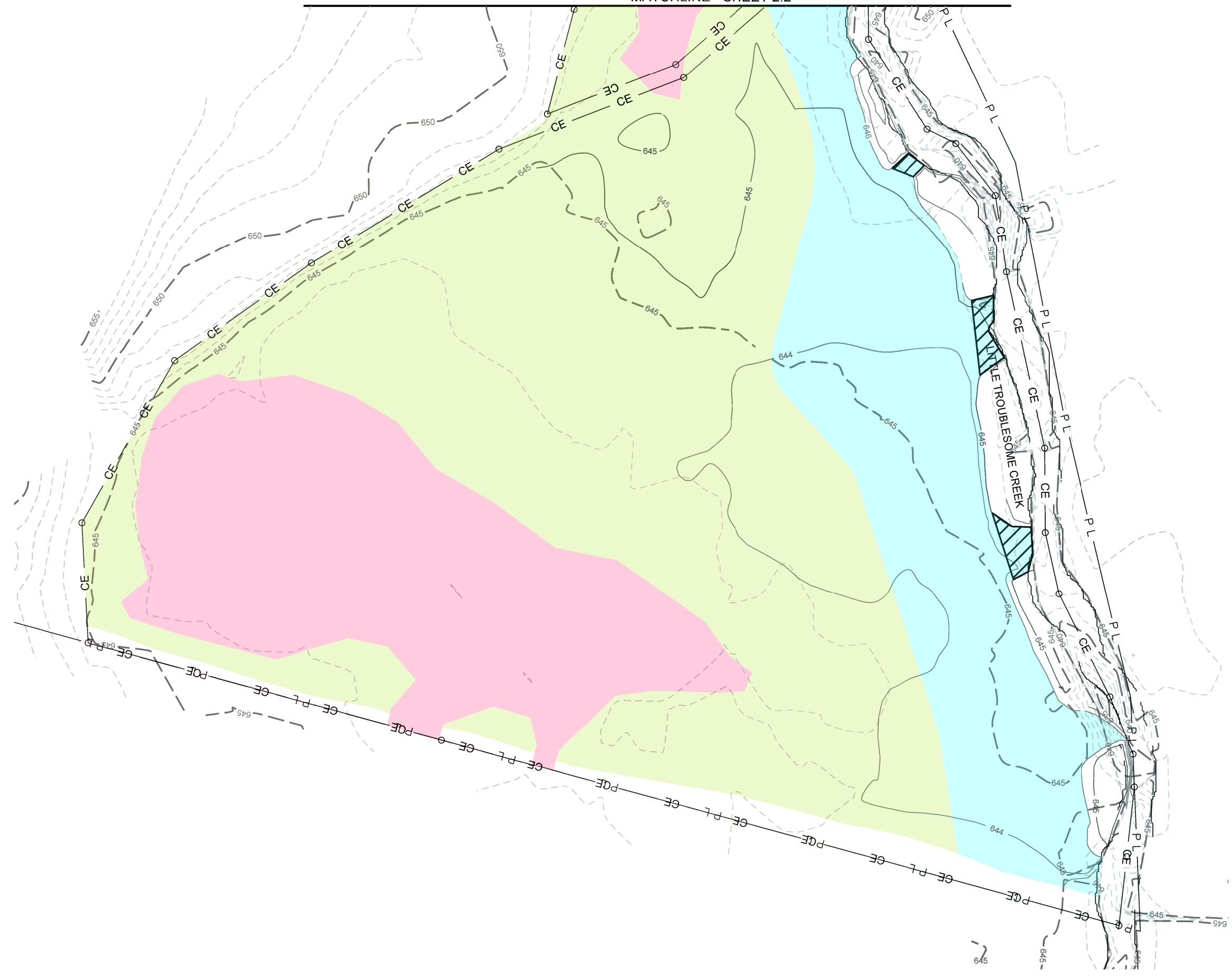
Date: September 5, 2012  
 Job Number: 005-12700  
 Project Engineer: JNK  
 Drawn By: JTL  
 Checked By: JWH

Revisions

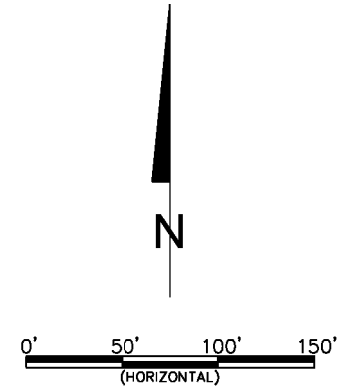

**WETLAND OVERLAY PLANS**

Sheet  
**2.1**

MATCHLINE - SHEET 2.2



Final Record Drawing



WILDLANDS  
ENGINEERING

WILDLANDS  
ENGINEERING, INC.  
Ecological Restoration  
Services

5605 Chapel Hill Road, Suite 122  
Raleigh, NC 27607  
Tel: 919.851.9986  
Fax: 919.851.9987  
Firm License No. F-0831



SIGNATURE  
SEPTEMBER 5, 2012  
DATE

Little Troublesome Creek Mitigation Site  
Rockingham County, NC  
Wetland Overlay Plans

Date: September 5, 2012  
Job Number: 005-12700  
Project Engineer: JNK  
Drawn By: JTL  
Checked By: JWH

Revisions

WETLAND  
OVERLAY  
PLANS

Sheet  
**2.2**

Final Record Drawing

MATCHLINE - SHEET 2.1



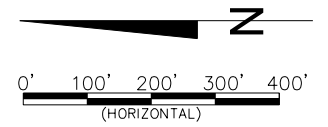
Planting Summary Table										
Streambank Planting									Acres	1.9
Species	Common Name	Max Spacing	Unit Type	Min. Caliper Size	Stratum	Indv. Spacing	# of Stems	Total lbs		
<i>Salix sericea</i>	Silky Willow	8'	L	0.5"-1.0"	Shrub	2.8 ft	993			
<i>Salix nigra</i>	Black Willow	8'	L	0.5"-1.0"	Shrub	2.8 ft	662			
<i>Cornus amomum</i>	Silky Dogwood	8'	L	0.5"-1.0"	Shrub	2.8 ft	1655			
<i>Juncus effusus</i>	Soft Rush	3'	P	1.0"-2.0"	Herb	3 ft	3581			
Subtotal									1815	0

Planting Summary Table										
Floodplain Planting									Acres	12.6
Species	Common Name	Max Spacing	Unit Type*	Min. Caliper Size	Stratum	Indv. Spacing	# of Stems	Total lbs		
<i>Anglono-nigra</i>	Black Walnut	8'	R	0.25"-1.0"	Canopy	6ft	2825			
<i>Liriodendron tulipifera</i>	Tulip Poplar	8'	R	0.25"-1.0"	Canopy	6 ft.	1400			
<i>Quercus phellos</i>	Willow Oak	8'	R	0.25"-1.0"	Canopy	6 ft.	400			
<i>Platanus occidentalis</i>	Sycamore	8'	R	0.25"-1.0"	Canopy	7 ft.	1400			
<i>Fraxinus pennsylvanica</i>	Green Ash	8'	R	0.25"-1.0"	Canopy	7ft.	1374			
<i>Betula nigra</i>	River Birch	8'	R	0.25"-1.0"	Canopy	7ft.	1374			
<i>Quercus rubra</i>	Southern Red Oak	8'	R	0.25"-1.0"	Canopy	9 ft.	343			
<i>Carpinus Caroliniana</i>	Honwood	8'	R	0.25"-1.0"	Canopy	7 ft.	687			
Subtotal									9801	0

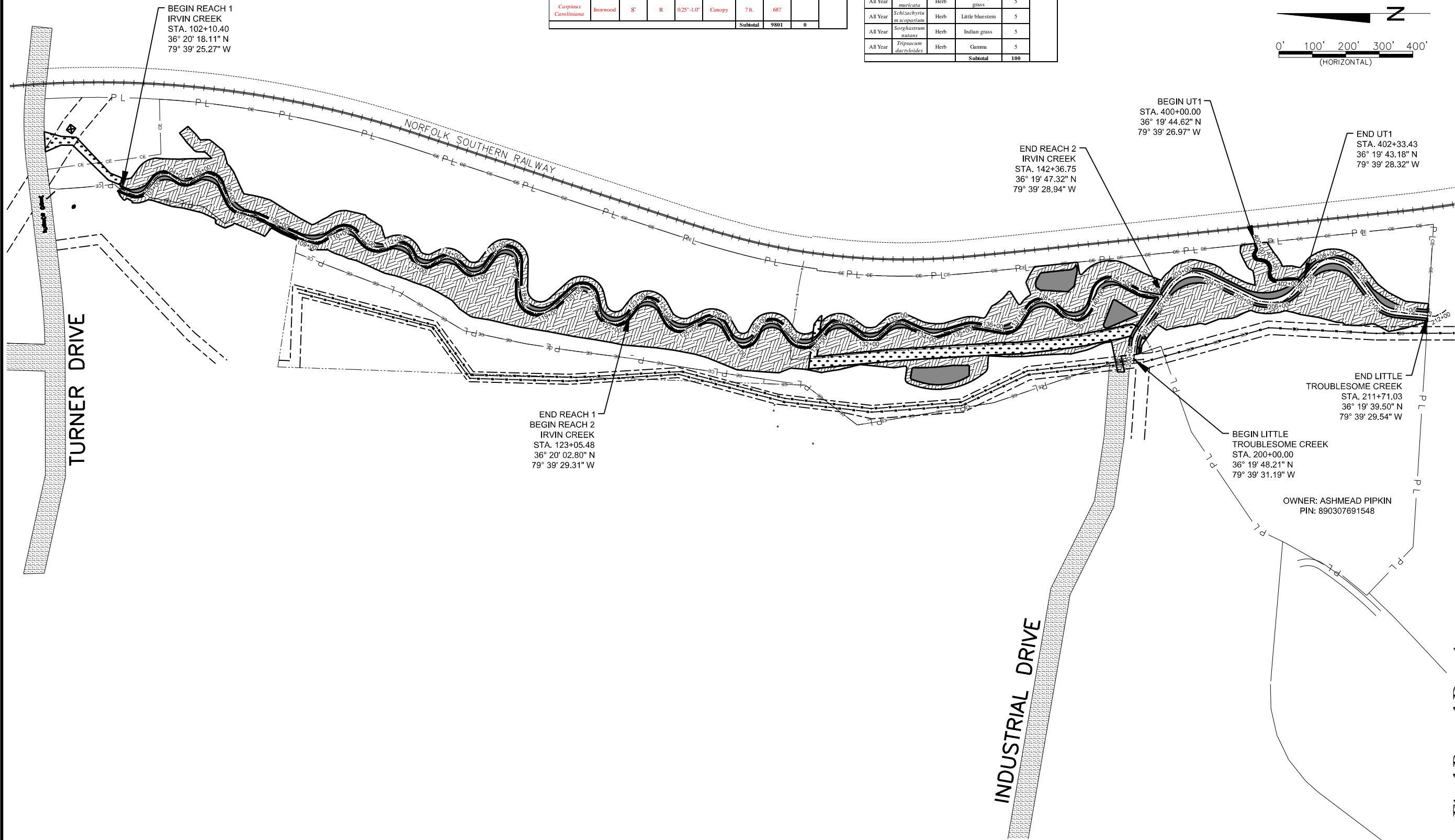
Permanent Seeding					
Approved Date	Species Name	Stratum	Common Name	Percent	Acres
All Year	<i>Elymus virginicus</i>	Herb	Virginia wild rye	15	
All Year	<i>Panicum virgatum</i>	Herb	Switchgrass	15	
All Year	<i>Agrostis stolonifera</i>	Herb	Creeping bentgrass	10	
All Year	<i>Rudbeckia hirta NC ecotype</i>	Herb	Black-eyed susan	10	
All Year	<i>Coreopsis lanceolata</i>	Herb	Coreopsis	10	
All Year	<i>Panicum clandestinum</i>	Herb	Deer tongue	10	
All Year	<i>Andropogon gerardii</i>	Herb	Big bluestem	5	
All Year	<i>Juncus effusus</i>	Herb	Soft rush	5	
All Year	<i>Echinochloa muricata</i>	Herb	Awned barnyard grass	5	
All Year	<i>Schizachyria scoparium</i>	Herb	Little bluestem	5	
All Year	<i>Sorghastrum nutans</i>	Herb	Indian grass	5	
All Year	<i>Tripsacum dactyloides</i>	Herb	Gamma	5	
Subtotal					100

Temporary Seeding					
Approved Date	Species Name	Stratum	Common Name	Density (lbs/acre)	Acres
Aug 15 - May 1	<i>Secale cereale</i>	Herb	Rye Grain	140	33.8
May 1 - Aug 15	<i>Setaria italica</i>	Herb	German Millet	50	

Planting Summary Table						
Easement Planting					Acres	1.1
Approved Date	Species Name	Stratum	Common Name	Density (lbs/acre)		
All Year	<i>Panicum virgatum</i>	Herb	Switchgrass	5		
Subtotal					5	



**WILDLANDS ENGINEERING**  
 WILDLANDS ENGINEERING, INC.  
 Ecological Restoration Services  
 5605 Chapel Hill Road, Suite 122  
 Raleigh, NC 27607  
 Tel: 919.851.9986  
 Fax: 919.851.9987  
 Firm License No. F-0831



Final Record Drawing

Little Troublesome Creek Mitigation Site  
 Rockingham County, NC  
 Stream Overlay Planting

Date:	September 5, 2012
Job Number:	005-12700
Project Engineer:	JNK
Drawn By:	JTL
Checked By:	JWH
Revisions:	

STREAM PLANTING



**Little Troublesome Creek Mitigation Site**  
**Rockingham County, NC**  
Wetland Overlay Planting

Date: September 5, 2012  
Job Number: 005-12700  
Project Engineer: JNK  
Drawn By: JTL  
Checked By: JWH

Revisions


**WETLAND  
PLANTING**

Planting Summary Table									Acres	12.6
Floodplain Planting										
Species	Common Name	Max Spacing	Unit Type*	Min. Caliper Size	Stratum	Ind. Spacing	# of Stems	Total lbs		
<i>Juglans nigra</i>	Black Walnut	8'	R	0.25"-1.0"	Canopy	6-ft.	2823			
<i>Liriodendron tulipifera</i>	Tulip Poplar	8'	R	0.25"-1.0"	Canopy	6 ft.	1400			
<i>Quercus phellos</i>	Willow Oak	8'	R	0.25"-1.0"	Canopy	6 ft.	400			
<i>Plantanus occidentalis</i>	Sycamore	8'	R	0.25"-1.0"	Canopy	7 ft.	1400			
<i>Fraxinus pennsylvanica</i>	Green Ash	8'	R	0.25"-1.0"	Canopy	7ft.	1374			
<i>Betula nigra</i>	River Birch	8'	R	0.25"-1.0"	Canopy	7ft.	1374			
<i>Quercus rubra</i>	Southern Red Oak	8'	R	0.25"-1.0"	Canopy	9 ft.	343			
<i>Carpinus Caroliniana</i>	Inonwood	8'	R	0.25"-1.0"	Canopy	7 ft.	687			
<b>Subtotal</b>									<b>9801</b>	<b>0</b>

Planting Summary Table					Acres	1.1
Estovers Planting						
Approved Date	Species Name	Stratum	Common Name	Density (lbs/acre)		
All Year	<i>Panicum virgatum</i>	Herb	Switchgrass	5		
<b>Subtotal</b>					<b>5</b>	

Permanent Seeding						Acres	14.5
Recommended application rate 20 -25 lbs. per acre							
Approved Date	Species Name	Stratum	Common Name	Percent			
All Year	<i>Elymus virginicus</i>	Herb	Virginia wild rye	15			
All Year	<i>Panicum virgatum</i>	Herb	Switchgrass	15			
All Year	<i>Agrostis stolonifera</i>	Herb	Creeping bentgrass	10			
All Year	<i>Rudbeckia hirta NC ecotype</i>	Herb	Black-eyed susan	10			
All Year	<i>Coreopsis lanceolata</i>	Herb	Coreopsis	10			
All Year	<i>Panicum clandestinum</i>	Herb	Deer tongue	10			
All Year	<i>Andropogon gerardii</i>	Herb	Big bluestem	5			
All Year	<i>Juncus effusus</i>	Herb	Soft rush	5			
All Year	<i>Echinochloa muricata</i>	Herb	Awne d barnyard grass	5			
All Year	<i>Schizachyriu macrosparium</i>	Herb	Little bluestem	5			
All Year	<i>Sorghastrum nutans</i>	Herb	Indian grass	5			
All Year	<i>Tripsacum dactyloides</i>	Herb	Gumma	5			
<b>Subtotal</b>						<b>100</b>	

Temporary Seeding					Acres	33.8
Approved Date	Species Name	Stratum	Common Name	Density (lbs/acre)		
Aug 15 - May 1	<i>Secale cereale</i>	Herb	Rye Grain	140		
May 1 - Aug 15	<i>Setaria italica</i>	Herb	Common Millet	50		

Planting Summary Table									Acres	19.1
Wetland Planting										
Species	Common Name	Max Spacing	Unit Type*	Min. Caliper Size	Stratum	Ind. Spacing	# of Stems	Total lbs		
<i>Alnus serrulata</i>	Tag Alder	8'	R	0.25"-1.0"	Canopy	6-8 ft.	1299			
<i>Cornus amomom</i>	Silly Dogwood	8'	R	0.25"-1.0"	Canopy	6-8 ft.	1299			
<i>Quercus phellos</i>	Willow Oak	8'	R	0.25"-1.0"	Canopy	6-8 ft.	649			
<i>Plantanus occidentalis</i>	Sycamore	8'	R	0.25"-1.0"	Canopy	6-8 ft.	2598			
<i>Betula nigra</i>	River Birch	8'	R	0.25"-1.0"	Canopy	6-8 ft.	2598			
<i>Nyssa sylvatica</i>	Black Gum	8'	R	0.25"-1.0"	Canopy	6-8 ft.	1299			
<i>Quercus michauxii</i>	Swamp Chestnut Oak	8'	R	0.25"-1.0"	Canopy	6-8 ft.	649			
<i>Fraxinus pennsylvanica</i>	Green Ash	8'	R	0.25"-1.0"	Canopy	6-8 ft.	2598			
<b>Subtotal</b>									<b>19058</b>	<b>0</b>



**Final Record Drawing**