

**“Manning Farm Property”  
Buffer Restoration Project**

**Edgecombe County, NC  
Tar-Pamlico River Basin  
(Cataloging Unit #03020103)**

**2008 Annual Monitoring Report (Year 3 of 5)  
(Task 9)**

**NC EEP Contract #D05026**



*Prepared For:*

**North Carolina Department of Environment and Natural Resources  
Ecosystem Enhancement Program  
1652 Mail Service Center  
Raleigh, NC 27699-1652**



December 2008

*Prepared By:*

**Land Management Group, Inc.**  
**PO Box 2522**  
**Wilmington, NC 28403**



**LMG**

LAND MANAGEMENT GROUP INC.

*Environmental Consultants*

Phone. 910-452-0001

Fax. 910-452-0060

**Project Manager:**

Christian A. Preziosi

Office. 910-452-0001

Cell. 910-471-0515

Email. [cpreziosi@lmgroup.net](mailto:cpreziosi@lmgroup.net)

## TABLE OF CONTENTS

<b>EXECUTIVE SUMMARY</b> .....	1
<b>I. PROJECT BACKGROUND</b> .....	2
1. Location and Setting .....	2
2. Mitigation Type and Objectives.....	2
3. Project History and Background .....	2
<b>II. PROJECT CONDITIONS</b> .....	3
1. Pre-Construction Conditions.....	3
2. Soils.....	3
3. Restoration Activities.....	3
<b>III. METHODOLOGY AND SUCCESS CRITERIA</b> .....	4
<b>IV. MONITORING</b> .....	5
<b>V. CONCLUSION</b> .....	5

### TABLES

1. REPORTING AND MILESTONE HISTORY
2. PLANTED SPECIES LIST
3. ANNUAL MONITORING DATA (YEAR 3) – CUMULATIVE SPREADSHEET

### FIGURES

1. SITE LOCATION MAP
2. USGS TOPOGRAPHIC QUADRANGLE
3. NRCS SOIL SURVEY
4. BUFFER PLANTING OVERVIEW

### APPENDICES

- A. SITE PHOTOGRAPHS
- B. VEGETATION SURVEY DATA BY PLOT
- C. CONSERVATION EASEMENT (WITH PLOT LOCATIONS)

## EXECUTIVE SUMMARY

Prior to project implementation, the Manning Farm Property was farmed for soybean and cotton production. The site consisted entirely of open agricultural fields with no existing riparian buffer (i.e. trees and shrubs are absent within 200 ft of existing surface waters). Under contract with the North Carolina Ecosystem Enhancement Program (EEP), Land Management Group, Inc. (LMG) implemented the restoration of 10.0 acres of riparian buffer habitat along Knight Canal (a tributary of Conetoe Creek) and contiguous surface-waters (i.e. field ditches) in Edgecombe County, NC.

The entire 10.0-ac project area has been planted with characteristic tree and shrub species on an average density of 900 stems/ac. Planting was completed in February 2006. Five (5) permanent 0.10-ac monitoring plots (equivalent to 5% of the restoration area) were established subsequent to planting. Annual monitoring will be conducted near the end of each growing season for a period of five years beginning in October 2006. Vegetative planting will be deemed successful if survivorship of plantings and volunteers of desirable species meets or exceeds a target stem density of 320 stems/acre. Based upon Year 3 monitoring, the buffer restoration area appears to be progressing well toward the targeted stem density. A total of 357 stems (excluding red maple, sweet gum, and privet) were enumerated within the five plots (corresponding to an average density of 714 stems/acre).

The following monitoring report summarizes the restoration project and includes specific plot data from the September 2008 (Year 3) monitoring event.

## **I. PROJECT BACKGROUND**

### 1. Location and Setting

Under contract with the North Carolina Ecosystem Enhancement Program (EEP), Land Management Group, Inc. (LMG) implemented the restoration of 10.0 acres of farmland located adjacent to Knight Canal (a tributary of the Tar River) and a series of contiguous surface waters (i.e. field ditches). The project area is part of the “Manning Farm”, located approximately 4.0 miles southeast of Tarboro in Edgecombe County, NC (refer to Figure 1). The site is bordered to the north by US 64 Alternate and to the west by Knight Canal (refer to Figure 2). The property is situated within TAR-3 of the lower Tar-Pamlico River Basin (USGS Cataloging Unit 03020103).

### 2. Mitigation Structure and Objectives

The restoration project is intended to provide suitable, high-quality riparian buffer restoration as compensatory mitigation for riparian buffer impacts authorized through the North Carolina Division of Water Quality (NC DWQ). The objective of the project is to restore riparian buffer vegetation and diffuse flow conditions to help reduce non-point source discharge of contaminants into adjacent water bodies. The restoration project has resulted in the removal of agricultural fields adjacent to Knight Creek and surface-water ditches contiguous with the creek. In doing so, the restoration project helps to reduce non-point source loading of nitrogen (N) into surface waters while increasing the nutrient removal capacity of the adjacent land. The following monitoring report summarizes conditions related to restoration site development.

### 3. Project History and Background

Table 1 provides the reporting and milestone history of the Manning Farm restoration project.

## **II. PROJECT CONDITIONS**

### 1. Pre-Construction Conditions

The 10.0-acre riparian buffer restoration area represents a portion of a larger 250-acre tract (“Manning Farm”) formerly farmed for the production of soybean and cotton. Land use practices, including herbicide, pesticide, and fertilizer application, served as potential contributors to decreased water quality of adjacent surface waters (i.e. ditches and ‘blue-line’ streams). Application of nitrogen-rich fertilizer represented the most significant non-point source of nitrogen within the immediate project area. Woody vegetation along ditches was either absent or sparse (less than 100 stems per acre that are > 5 inches diameter at breast height). As a result, nutrient-laden runoff was discharged from agricultural fields directly into surface waters with little or no nutrient filtration/transformation. Photographs documenting pre-project conditions are provided in Appendix A.

### 2. Soils

The site consists predominantly of Cape Fear loam, a very poorly drained soil occurring along stream terraces and depressional drainageways. Infiltration is slow and surface runoff is slow in these areas. The seasonal high water table occurs at or near the soil surface, assuming no ditching in the vicinity. The remaining portion of the buffer area consists of Roanoke loam – a poorly drained soil characteristic of broader flats of stream terraces. Roanoke soils exhibit slow infiltration with a seasonal high water table occurring at or near the soil surface (Figure 3).

### 3. Restoration Activities

The restoration project included the planting of characteristic tree and shrub seedlings adjacent to open ditches and blue-line streams on the 10.0-ac restoration site (refer to Figure 4). No federal

or state permits were necessary to conduct the restoration activities. The riparian buffer was planted with characteristic tree species including river birch (*Betula nigra*), sycamore (*Platanus occidentalis*), water oak (*Quercus nigra*), overcup oak (*Quercus lyrata*), tulip poplar (*Liriodendron tulipifera*), and red bay (*Persea borbonia*). Bare-root seedlings were planted at a density of 600 trees per acre. The outer 50 feet of the proposed buffer areas were planted with characteristic shrub species including wax myrtle (*Myrica cerifera*), American beautyberry (*Callicarpa americana*), and elderberry (*Sambucus canadensis*). Shrubs were planted at a density of 1,200 plants per acre. These species are considered to be well suited for site-specific conditions, including soil characteristics and moisture regimes. In addition, each of these species is listed within NCDENR's "Guidelines for Riparian Buffer Restoration" as appropriate species for use in riparian buffer restoration projects. Approximately 7,500 trees and shrubs were planted throughout the project footprint. On-site planting was completed in February 2006. Refer to Table 2 for a list of species planted (with corresponding quantities) within the buffer restoration area.

LMG arranged for the execution of the conservation easement deed to ensure the protection of the riparian buffer restoration area in perpetuity. The easement prohibits any activities (e.g. timbering, farming, building, etc.) that would alter the environmental state of the restoration project. Post-restoration management will be consistent with allowable activities as identified in the Tar-Pamlico Buffer Rule (15A NCAC 02B.0233). The conservation easement has been transferred to the North Carolina State Property Office for long-term protection and management of the site.

### **III. METHODOLOGY & SUCCESS CRITERIA**

Based upon standard mitigation site monitoring requirements, annual monitoring will be conducted at the end of each growing season over a period of five years. Five (5) 0.10-acre permanent plots corresponding to a total of 0.5 acres (equivalent to 5% of the restoration area) were established subsequent to site planting. The locations of the monitoring plots are depicted in Appendix C. Monitoring includes the identification and enumeration of individuals (including shrubs and trees, planted or volunteer) occurring within each plot. All tree and shrub species within the plots are identified, flagged, and recorded on field data sheets during each monitoring event. Site planting is to be deemed successful if survivorship of plantings and volunteers of

desirable species<sup>1</sup> meets or exceeds a target stem density of 320 stems/acre. Non-preferred and invasive species are not counted toward success criteria. Thus species such as red maple (*Acer rubrum*), sweet gum (*Liquidambar styraciflua*), and privet (*Ligustrum sinense*) are excluded from the recorded plot density data.

Monitoring reports are being submitted annually to the EEP (by January 1 of each year). These reports include results of vegetative monitoring and photographic documentation of site conditions. Monitoring reports will also identify any contingency measures that may need to be employed to remedy any site deficiencies. For instance, deer browse tubes and fencing may need to be used if evidence of significant herbivory or deer browse is observed. In addition, supplemental planting may be necessary in areas of reduced survivorship.

#### **IV. MONITORING**

A total of 510 stems (planted and volunteer shrubs/trees) were observed within the five 0.10-acre plots. Of the total observed, 357 stems (total excluding privet, red maple and sweet gum) were counted toward the success criteria (corresponding to 714 stems/acre). Of the species planted, river birch (*Betula nigra*) was the most abundant tree observed, and American beautyberry (*Callicarpa americana*) was the most abundant shrub observed within the five monitoring plots. Individual plot totals ranged between 37 stems (Plot 4) and 142 stems (Plot 1).

Refer to Table 3 for a comprehensive list of monitoring plot totals. Site photographs from the 2008 monitoring event are included in Appendix A and individual plot data sheets are included in Appendix B.

#### **V. CONCLUSION**

Restoration activities have demonstrated to be successful at the 10.0-acre project site through the third year of annual monitoring. The observed density (714 stems/acre) indicates that the site is progressing well toward a maturity density of 320 stems/acre (considered the target density five years post-planting).

---

<sup>1</sup> Desirable species are considered as noninvasive species characteristic of riparian habitats.  
Manning Farm Riparian Buffer Restoration  
Annual Monitoring Report (Year 3 of 5)  
Land Management Group, Inc.  
November 2008  
Contract No. D05026



Reversion of agricultural land to wooded riparian buffer will decrease source nutrient loading and concurrently increase nutrient removal capacity. In addition, the project will provide ancillary benefits to aquatic and wildlife habitat via enhanced niche habitat, microclimate modification and shade, and increased food-web support. By doing so, the proposed project will help to effectively mitigate for authorized loss of riparian buffers within the Tar-Pamlico River Basin.

## **TABLES**

Table 1. Reporting and Milestone History

<b>Task</b>	<b>Project Milestone</b>	<b>Completion Date</b>	<b>COMMENTS</b>
1	Feasibility Study, CE Document, and Public Meeting	July 1, 2005	
2	Record a Conservation Easement on the Site	January 25, 2006	Recorded in Edgecombe County Register of Deeds
3	Restoration Plan Approved by EEP	January 2006	Restoration Plan complete
4	Mitigation Site Earthwork Completed	January 15, 2006	Minimal earthwork required (only disking)
5	Mitigation Site Planting and Installation of Monitoring Devices	February 15, 2006	Approved by EEP
6	Submittal of Mitigation Plan (including as-built drawings)	June, 2006	Approved by EEP
7	Submittal of Monitoring Report #1 to EEP	December 31, 2006	Approved by EEP
8	Submittal of Monitoring Report #2 to EEP	December 31, 2007	Approved by EEP
9	Submittal of Monitoring Report #3 to EEP	December 31, 2008	
10	Submittal of Monitoring Report #4 to EEP	December 31, 2009	
11	Submittal of Monitoring Report #5 to EEP	December 31, 2010	

Table 2. Manning Farm Plant List.

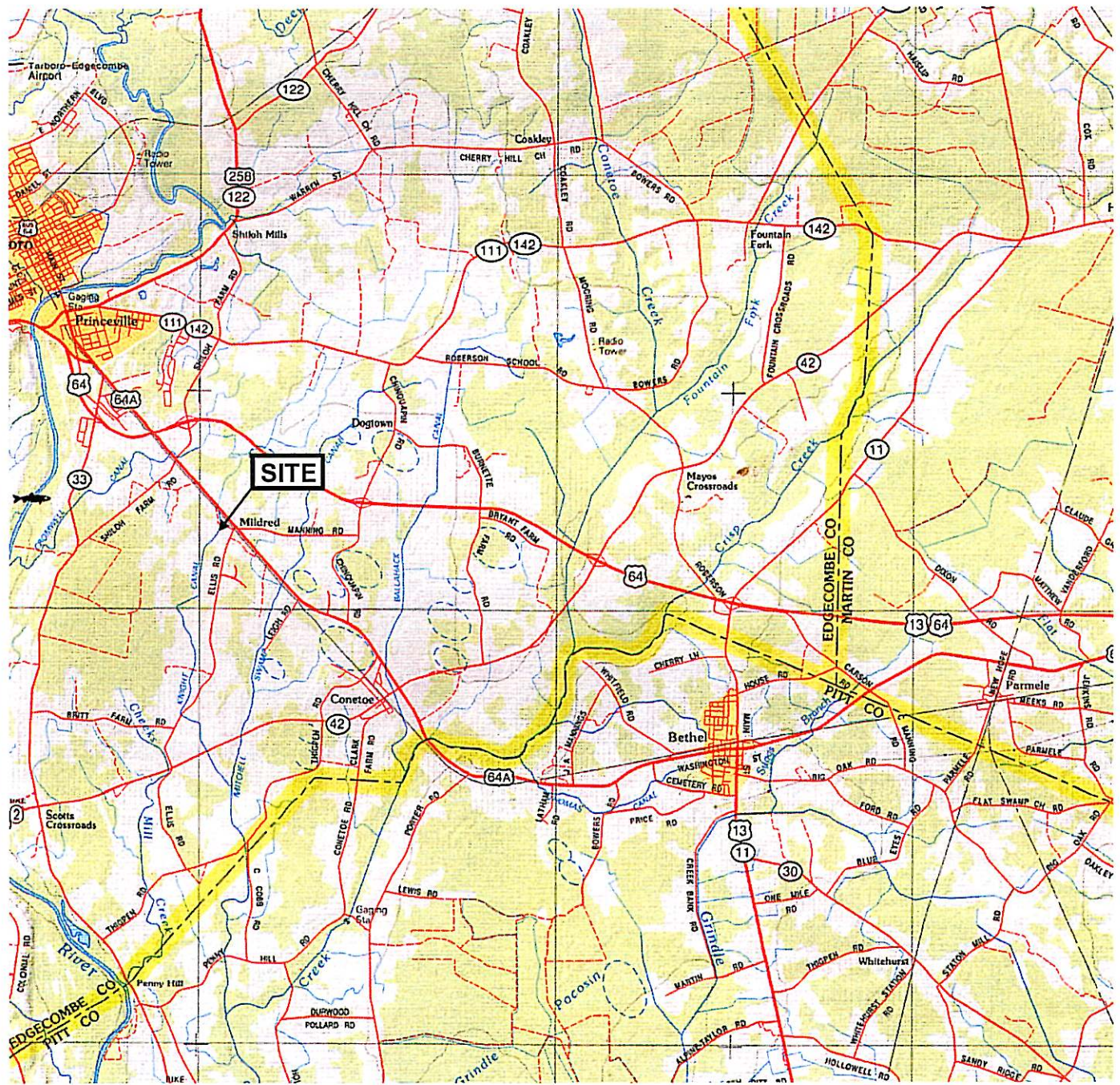
Buffer Zone	Zone 1 (Trees)	Zone 2 (Shrubs)		
Stem Target:	600/ac.	4,500 (% of total)	1,200/ac. # planted	3,000 (% of total)
Species	# planted			
River Birch ( <i>Betula nigra</i> )	1,200	26.67%		
Sycamore ( <i>Platanus occidentalis</i> )	800	17.78%		
Green Ash ( <i>Fraxinus pennsylvanica</i> )	500	11.11%		
Overcup Oak ( <i>Quercus lyrata</i> )	200	4.44%		
Water Oak ( <i>Quercus nigra</i> )	500	11.11%		
Red Bay ( <i>Persea borbonia</i> )	500	11.11%		
Tulip Poplar ( <i>Liriodendron tulipifera</i> )	1,000	22.22%		
Sweet pepperbush ( <i>Clethra alnifolia</i> )			500	16.67%
Elderberry ( <i>Sambucus canadensis</i> )			1,000	33.33%
American Beautyberry ( <i>Callicarpa americana</i> )			1,000	33.33%
Wax Myrtle ( <i>Myrica cerifera</i> )			500	16.67%
			<b>TOTAL</b>	<b>7,700</b>

**TABLE 3. ANNUAL MONITORING DATA SHEET (YEAR 3) - VEGETATION PLOTS  
MANNING FARM RIPARIAN BUFFER SITE**

**Year 3**

SPECIES	PLOT 1	PLOT 2	PLOT 3	PLOT 4	PLOT 5	TOTAL
American beautyberry				13	32	45
Baccharis	26	18	3	8	12	67
Elderberry		15		2	13	30
Green Ash	1			5	14	20
Overcup Oak						0
Persimmon	1					1
Privet						0
Red Bay					1	1
River Birch	29	4	23			56
Sweet Gum	50	50	18	0	35	153
Sweet Pepperbush	1					1
Sycamore	19	14	20			53
Tulip Poplar	11	1	18			30
Water Oak				9	37	46
Willow Oak	4		1			5
Wax Myrtle						0
Winged Sumac			2			2
<b>TOTAL</b>	<b>142</b>	<b>102</b>	<b>85</b>	<b>37</b>	<b>144</b>	<b>510</b>
<b>Total Counted toward Success</b>	<b>92</b>	<b>52</b>	<b>67</b>	<b>37</b>	<b>109</b>	<b>357</b>
<b>Stem Density (per ac)</b>	<b>920</b>	<b>520</b>	<b>670</b>	<b>370</b>	<b>1090</b>	<b>714</b>

## FIGURES



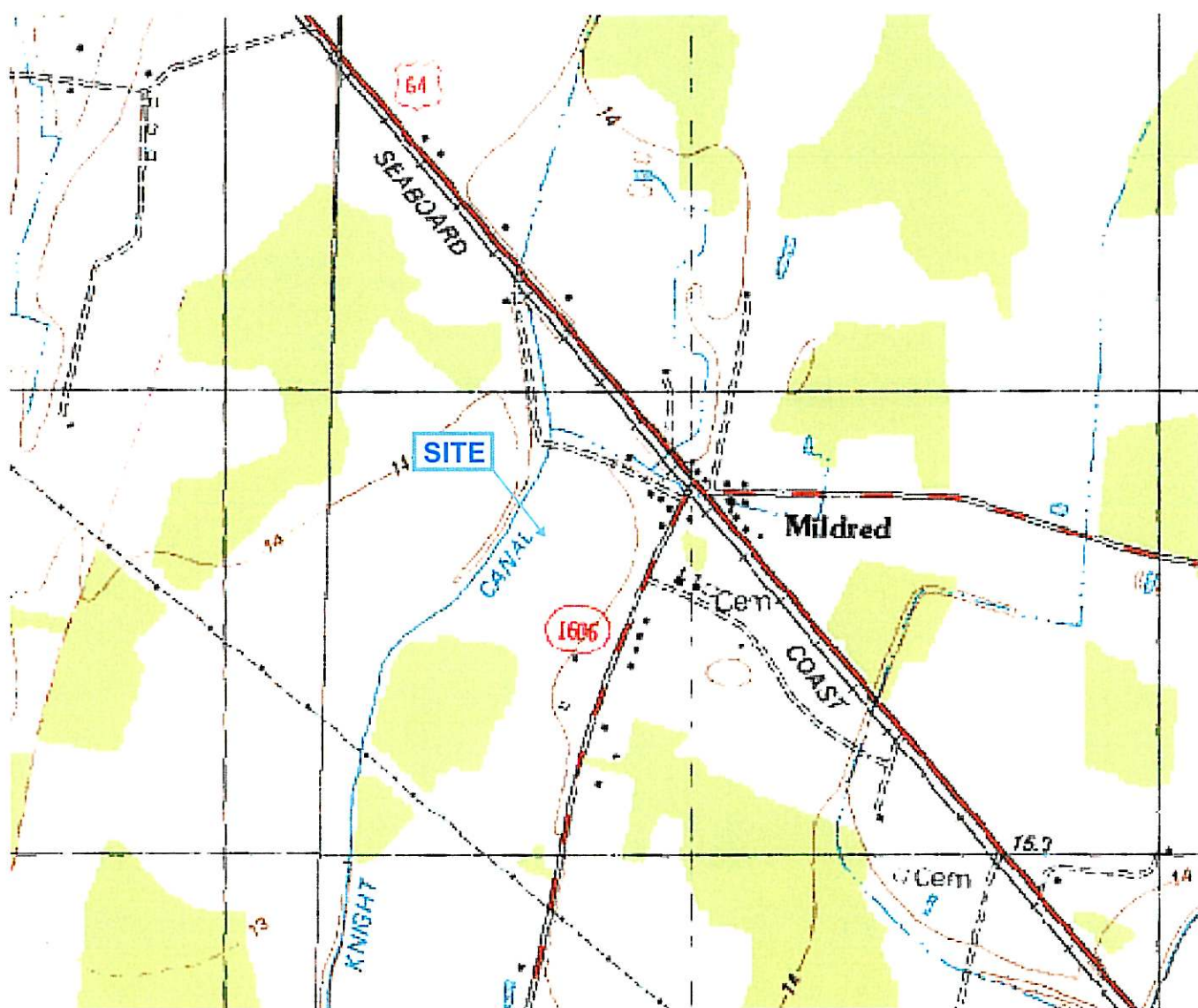
SCALE 1" = 2.0 miles

Map Source: DeLorme: North Carolina Atlas and Gazetteer., 1997 p. 46.

**NC EEP**  
 Manning Farm  
 Buffer Restoration Project  
 Edgecombe County

**Land Management Group, Inc.**  
 Environmental Consultants  
 Wilmington, N.C.  
 November 2008

**Figure 1.**  
 Site Location Map



Boundaries are approximate and not meant to be absolute.

Map Source: 1990, USGS 7.5' Topographic Quadrangle. Conetoe Quadrangle



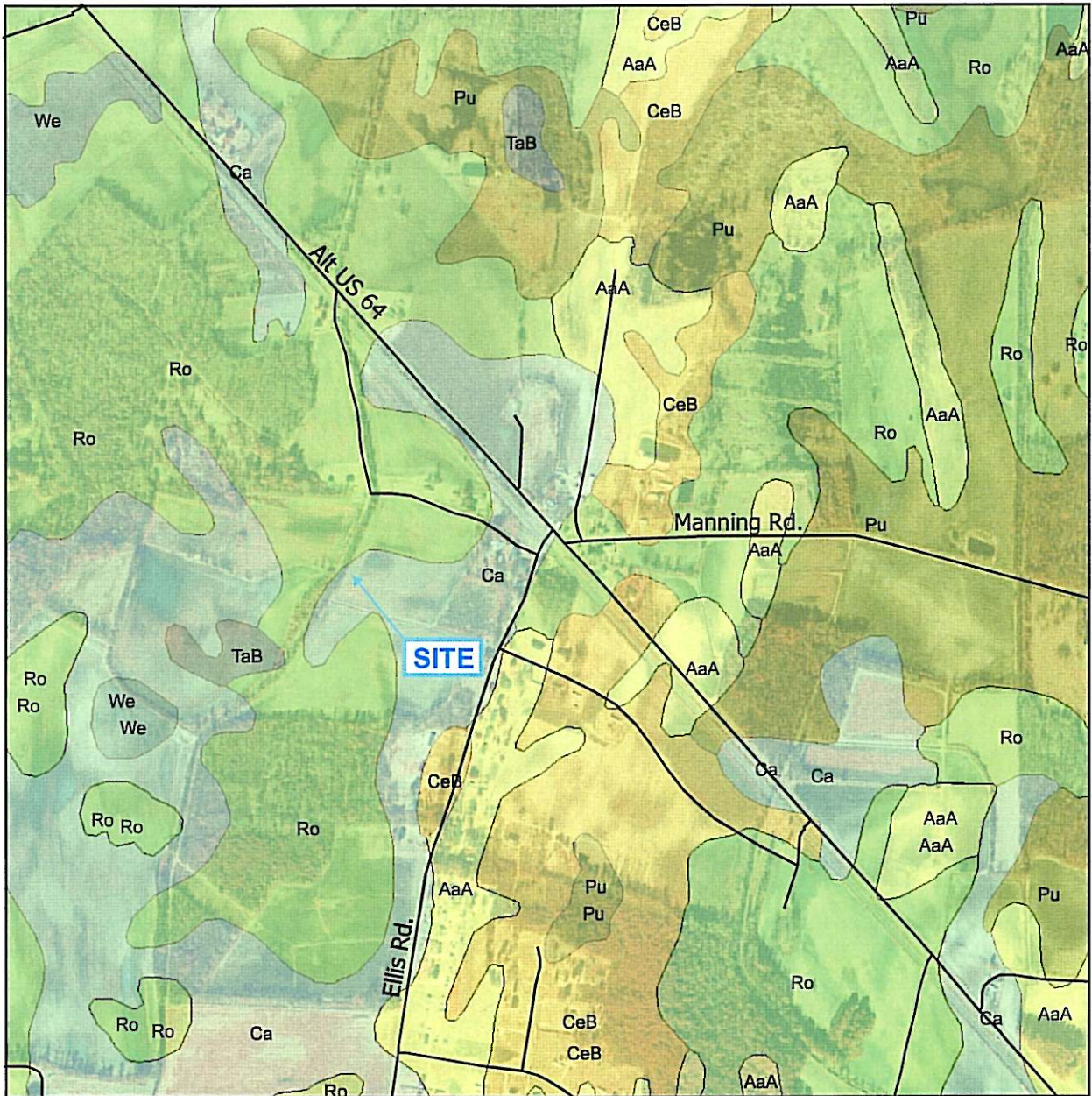
SCALE 1" = 2000'

**NC EEP**  
 Manning Farm  
 Buffer Restoration Project  
 Edgecombe County

**Land Management Group, Inc.**  
 Environmental Consultants  
 Wilmington, N.C.  
 November 2008

**Figure 2.**  
 1990 Topographic Quad





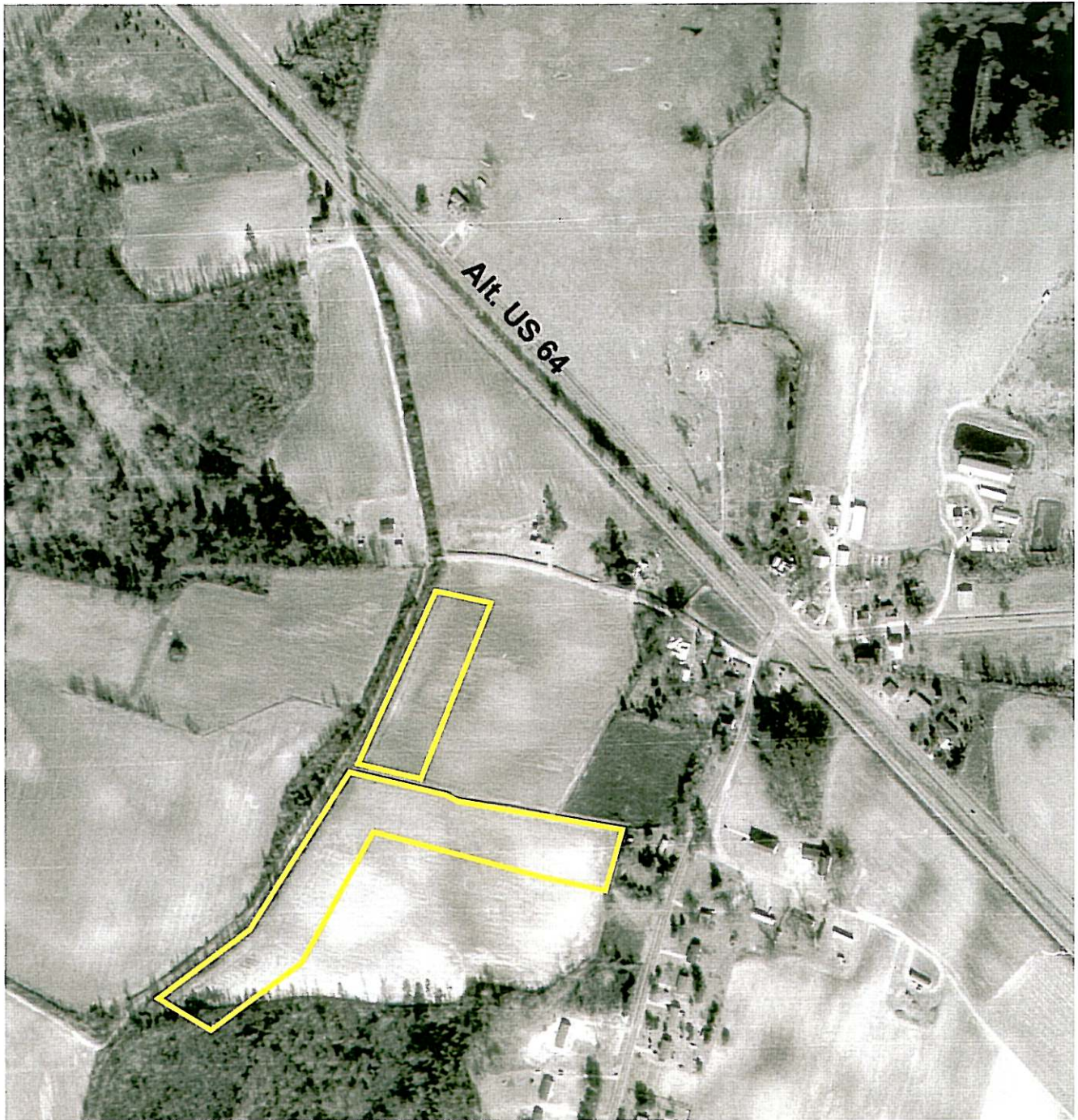
SCALE 1" = 1000'

Map Source: Soil Survey of Edgemcombe County, 1977.

**NC EEP**  
Manning Farm  
Buffer Restoration Project  
Edgemcombe County

**Land Management Group, Inc.**  
Environmental Consultants  
Wilmington, N.C.  
November 2008

**Figure 3.**  
Generalized Soil Map  
Edgemcombe County, NC



 200' Buffer Planting Area (10.0 acres)

Boundaries are approximate  
and not meant to be absolute.

Map Source: 1993 Aerial Photography NCGIA



SCALE 1" = 500'

**NC EEP**  
Manning Farm  
Buffer Restoration Project  
Edgecombe County

**Land Management Group, Inc.**  
Environmental Consultants  
Wilmington, N.C.  
November 2008

**Figure 4.**  
Buffer Planting Overview

**APPENDIX A.**

**SITE PHOTOGRAPHS (SEPTEMBER 2008, YEAR 3 OF 5)**

(1) View of Plot #1 towards Knight Canal



(2) Typical view of a 3rd year Sycamore in Plot #1



(4) View of maturing trees in Plot #2



(3) View of maturing trees in Plot #3



(5) View of Plot #5 looking east.



(6) Typical view of 3rd year Water Oak in Plot #5



**APPENDIX B.**

**VEGETATION SURVEY DATA BY PLOT**

MANNING FARM RIPARIAN BUFFER SITE  
 ANNUAL MONITORING DATA SHEET - VEGETATION PLOTS

PLOT NUMBER 1

SPECIES	STRATUM	Number of Individuals	HEIGHT	Planted vs. Volunteer Species	Number of Individuals Counted toward Success Criteria
	(T, SA, or SH)				
River Birch	SA	4	4 ft	Planted	4
River Birch	SA	7	5 ft	Planted	7
River Birch	SA	5	6 ft	Planted	5
River Birch	SA	10	7 ft	Planted	10
River Birch	SA	2	8 ft	Planted	2
River Birch	SA	1	9 ft	Planted	1
Tulip Poplar	SA	4	1 ft	Planted	4
Tulip Poplar	SA	6	2 ft	Planted	6
Tulip Poplar	SA	1	3 ft	Planted	1
American Sycamore	SA	1	3 ft	Planted	1
American Sycamore	SA	2	4 ft	Planted	2
American Sycamore	SA	2	5 ft	Planted	2
American Sycamore	SA	2	6 ft	Planted	2
American Sycamore	SA	3	9 ft	Planted	3
American Sycamore	SA	4	10 ft	Planted	4
American Sycamore	SA	3	12 ft	Planted	3
American Sycamore	SA	2	15 ft	Planted	2
Willow Oak	SA	1	2 ft	Planted	1
Willow Oak	SA	1	3 ft	Planted	1
Willow Oak	SA	1	5 ft	Planted	1
Willow Oak	SA	1	7 ft	Planted	1
Persimmon	SA	1	1 ft	Planted	1
Green Ash	SA	1	1 ft	Planted	1
Sweet Pepperbush	SH	1	1 ft	Planted	1
Baccharis	SH	1	3 ft	Volunteer	1
Baccharis	SH	6	4 ft	Volunteer	6
Baccharis	SH	6	5 ft	Volunteer	6



Baccharis	SH	11	6 ft	Volunteer	11
Baccharis	SH	2	7 ft	Volunteer	2
Sweet Gum	SA	50	2 ft	Volunteer	0
				<b>OBSERVED DENSITY</b>	
	<b>TOTAL SHRUBS</b>	<b>27</b>		<b>(PER PLOT)</b>	<b>92</b>
	<b>TOTAL TREES OF PLANTED SPECIES</b>	<b>64</b>		<b>OBSERVED DENSITY (PER ACRE)</b>	<b>920</b>
	<b>VOLUNTEER SPECIES</b>	<b>50</b>			
	<b>TOTAL INDIVIDUALS</b>	<b>142</b>			

MANNING FARM RIPARIAN BUFFER SITE  
 ANNUAL MONITORING DATA SHEET - VEGETATION PLOTS

PLOT NUMBER 2

SPECIES	STRATUM	Number of Individuals	HEIGHT	Planted vs. Volunteer Species	Number of Individuals Counted toward Success Criteria
	(T, SA, or SH)				
Elderberry	SH	2	1 ft	Planted	2
Elderberry	SH	5	2 ft	Planted	5
Elderberry	SH	6	3 ft	Planted	6
Elderberry	SH	1	4 ft	Planted	1
Elderberry	SH	1	5 ft	Planted	1
River Birch	SA	1	3 ft	Planted	1
River Birch	SA	1	4 ft	Planted	1
River Birch	SA	1	5 ft	Planted	1
River Birch	SA	1	6 ft	Planted	1
Tulip Poplar	SA	1	1 ft	Planted	1
American Sycamore	SA	2	2 ft	Planted	2
American Sycamore	SA	1	3 ft	Planted	1
American Sycamore	SA	6	4 ft	Planted	6
American Sycamore	SA	1	5 ft	Planted	1
American Sycamore	SA	3	6 ft	Planted	3
American Sycamore	SA	1	8 ft	Planted	1
Baccharis	SH	1	1 ft	Volunteer	1
Baccharis	SH	1	3 ft	Volunteer	1
Baccharis	SH	8	4 ft	Volunteer	8
Baccharis	SH	6	5 ft	Volunteer	6
Baccharis	SH	1	6 ft	Volunteer	1
Baccharis	SH	1	7 ft	Volunteer	1
Sweet Gum	SA	40	2 ft	Volunteer	0
Sweet Gum	SA	10	3 ft	Volunteer	0
	<b>TOTAL SHRUBS</b>	<b>33</b>		<b>OBSERVED DENSITY (PER PLOT)</b>	<b>52</b>
	<b>TOTAL TREES OF PLANTED</b>	<b>19</b>		<b>OBSERVED DENSITY (PER</b>	<b>520</b>

	TOTAL TREES OF VOLUNTEER SPECIES	50			
	TOTAL INDIVIDUALS	102			

MANNING FARM RIPARIAN BUFFER SITE  
 ANNUAL MONITORING DATA SHEET - VEGETATION PLOTS

PLOT NUMBER 3

SPECIES	STRATUM	Number of Individuals	HEIGHT	Planted vs. Volunteer Species	Number of Individuals Counted toward Success Criteria
	(T, SA, or SH)				
River Birch	SA	3	4 ft	Planted	3
River Birch	SA	1	5 ft	Planted	1
River Birch	SA	6	6 ft	Planted	6
River Birch	SA	2	7 ft	Planted	2
River Birch	SA	2	8 ft	Planted	2
River Birch	SA	3	9 ft	Planted	3
River Birch	SA	4	10 ft	Planted	4
River Birch	SA	1	11 ft	Planted	1
River Birch	SA	1	12 ft	Planted	1
Sycamore	SA	1	3 ft	Planted	1
Sycamore	SA	1	5 ft	Planted	1
Sycamore	SA	1	7 ft	Planted	1
Sycamore	SA	1	8 ft	Planted	1
Sycamore	SA	1	9 ft	Planted	1
Sycamore	SA	3	10 ft	Planted	3
Sycamore	SA	4	11 ft	Planted	4
Sycamore	SA	6	12 ft	Planted	6
Sycamore	SA	1	14 ft	Planted	1
Sycamore	SA	1	15 ft	Planted	1
Tulip Poplar	SA	1	2 ft	Planted	1
Tulip Poplar	SA	2	3 ft	Planted	2
Tulip Poplar	SA	5	4 ft	Planted	5
Tulip Poplar	SA	5	5 ft	Planted	5
Tulip Poplar	SA	3	6 ft	Planted	3
Tulip Poplar	SA	2	7 ft	Planted	2
Willow Oak	SA	1	3 ft	Planted	1
Winged Sumac	SA	2	4ft.	Volunteer	2

Baccharis	SH	3	5 ft	Volunteer	3
Sweet Gum	SA	10	3ft	Volunteer	0
Sweet Gum	SA	4	4 ft	Volunteer	0
Sweet Gum	SA	4	6 ft	Volunteer	0
	<b>TOTAL SHRUBS</b>	<b>3</b>		<b>OBSERVED DENSITY (PER PLOT)</b>	<b>67</b>
	<b>TOTAL TREES OF PLANTED SPECIES</b>	<b>62</b>		<b>OBSERVED DENSITY (PER ACRE)</b>	<b>670</b>
	<b>TOTAL TREES OF VOLUNTEER SPECIES</b>	<b>20</b>			
	<b>TOTAL INDIVIDUALS</b>	<b>85</b>			

MANNING FARM RIPARIAN BUFFER SITE  
 ANNUAL MONITORING DATA SHEET - VEGETATION PLOTS

PLOT NUMBER 4

SPECIES	STRATUM (T, SA, or SH)	Number of Individuals	HEIGHT	Planted vs. Volunteer Species	Number of Individuals Counted toward Success Criteria
American Beautyberry	SH	6	3 ft	Planted	6
American Beautyberry	SH	7	4 ft	Planted	7
Water Oak	SA	3	2 ft	Planted	3
Water Oak	SA	2	3 ft	Planted	2
Water Oak	SA	2	4 ft	Planted	2
Water Oak	SA	2	5 ft	Planted	2
Green Ash	SA	1	2 ft	Planted	1
Green Ash	SA	4	6 ft	Planted	4
Elderberry	SH	1	2 ft	Planted	1
Elderberry	SH	1	3 ft	Planted	1
Baccharis	SH	1	3 ft	Volunteer	1
Baccharis	SH	2	4 ft	Volunteer	2
Baccharis	SH	3	5 ft	Volunteer	3
Baccharis	SH	1	6 ft	Volunteer	1
Baccharis	SH	1	7 ft	Volunteer	1
	<b>TOTAL SHRUBS</b>	<b>23</b>		<b>OBSERVED DENSITY (PER PLOT)</b>	<b>37</b>
	<b>TOTAL TREES OF PLANTED SPECIES</b>	<b>14</b>		<b>OBSERVED DENSITY (PER ACRE)</b>	<b>370</b>
	<b>TOTAL TREES OF VOLUNTEER SPECIES</b>	<b>0</b>			
	<b>TOTAL INDIVIDUALS</b>	<b>37</b>			

MANNING FARM RIPARIAN BUFFER SITE  
ANNUAL MONITORING DATA SHEET - VEGETATION PLOTS

PLOT NUMBER 5

SPECIES	STRATUM	Number of Individuals	HEIGHT	Planted vs. Volunteer Species	Number of Individuals Counted toward Success Criteria
	(T, SA, or SH)				
Willow Oak	SA	4	1 ft	Planted	4
Willow Oak	SA	9	2 ft	Planted	9
Willow Oak	SA	12	3 ft	Planted	12
Willow Oak	SA	8	4 ft	Planted	8
Willow Oak	SA	4	5 ft	Planted	4
Green Ash	SA	3	2 ft	Planted	3
Green Ash	SA	1	3 ft	Planted	1
Green Ash	SA	1	4 ft	Planted	1
Green Ash	SA	4	5 ft	Planted	4
Green Ash	SA	4	6 ft	Planted	4
Green Ash	SA	1	7 ft	Planted	1
American Beautyberry	SH	1	1 ft	Planted	1
American Beautyberry	SH	8	2 ft	Planted	8
American Beautyberry	SH	20	3 ft	Planted	20
American Beautyberry	SH	3	4 ft	Planted	3
Elderberry	SH	4	1 ft	Planted	4
Elderberry	SH	5	2 ft	Planted	5
Elderberry	SH	1	3 ft	Planted	1
Elderberry	SH	3	4 ft	Planted	3
Red Bay	SA	1	5 ft	Volunteer	1
Baccharis	SH	12	<4 ft	Volunteer	12
Sweet Gum	SA	35	2 ft	Volunteer	0
	TOTAL SHRUBS	57		OBSERVED DENSITY (PER PLOT)	109
	TOTAL TREES OF PLANTED	51		OBSERVED DENSITY (PER	1090
	TOTAL TREES OF VOLUNTEER SPECIES	36			

	TOTAL INDIVIDUALS	144			
--	----------------------	-----	--	--	--

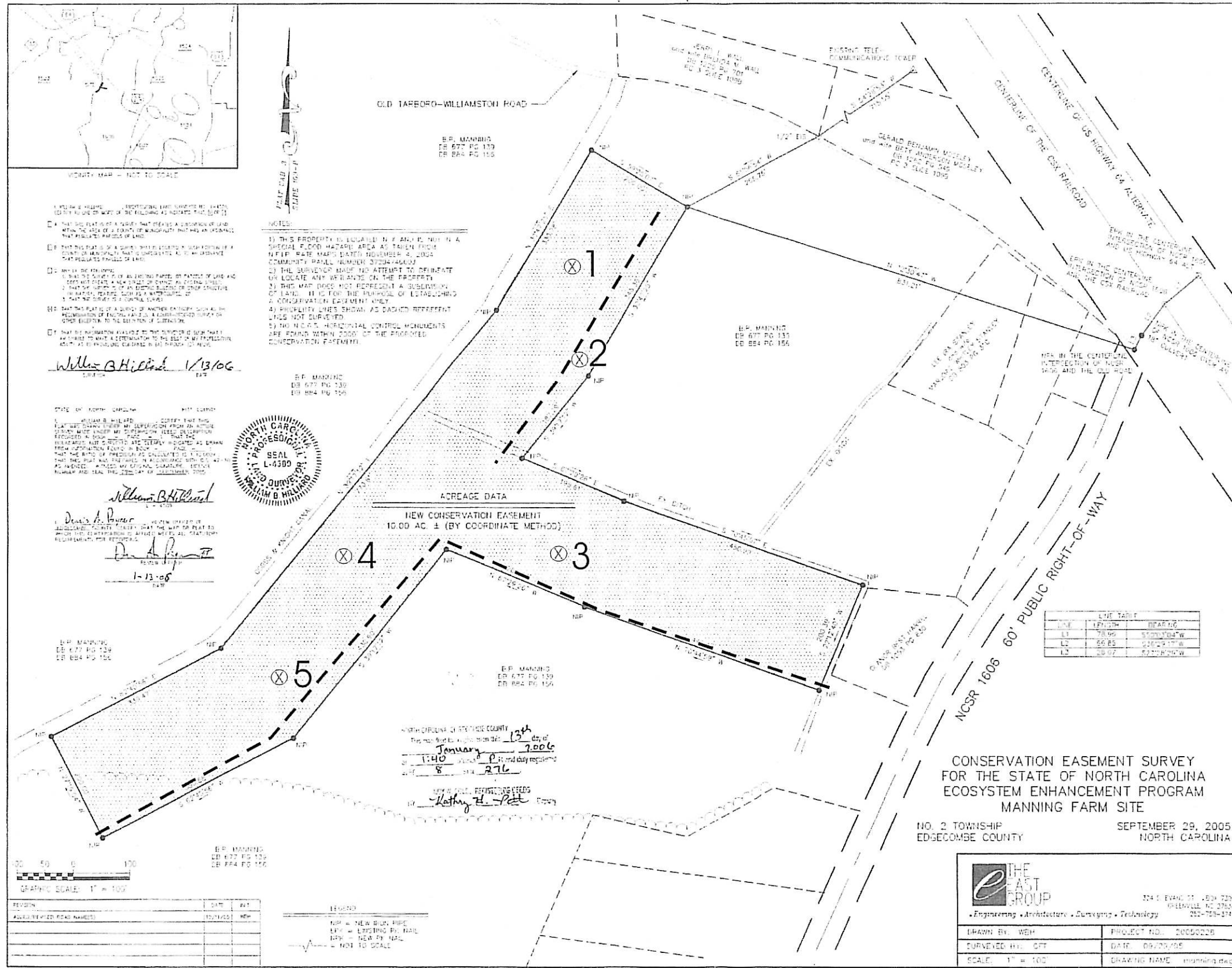


**APPENDIX C.  
CONSERVATION EASEMENT PLAT  
(WITH PLOT LOCATIONS)**

PC 8 / S-276

PC 8 / S-276

PC 8 / S-276



Plot #	UTM Coordinates
1	745578.75002 233843.862283
2	745591.202791 233810.111316
3	745575.130088 233667.657117
4	745477.154439 233661.641541
5	745464.062895 233622.895396

NC EEP  
 Manning Farm  
 Buffer Restoration Project  
 Edgemcombe County

Land Management Group, Inc.  
 Environmental Consultants  
 Wilmington, N.C.  
 November 2008

Figure 5.  
 Survey with Monitoring Plots