

THIRD ANNUAL MONITORING REPORT – 2006 GROWING SEASON

Contentnea Creek/Little Contentnea Creek Riparian Buffer Restoration – Phase 2 (EEP Contract: D04009-1; RFP 16-D04009)



December 2006

Submitted to:



Guy Pearce
North Carolina Ecosystem Enhancement
Program
2728 Capital Blvd., Suite 1H 103
Raleigh, NC 27604

Submitted by:

Robert J. Goldstein and Associates, Inc.
1221 Corporation Pkwy., Suite 100
Raleigh, NC 27610



Submitted for:



Greene Environmental Services, LLC
90 Ham Produce Rd.
Snow Hill, NC 28580

Greene Environmental
Services, LLC
90 Ham Produce Road
Snow Hill, NC 28580
(252) 747-8200

Introduction and Background

In November 2004 the NC Ecosystem Enhancement Program awarded Greene Environmental Services a contract to restore 50 acres of riparian buffer along unnamed tributaries to Contentnea Creek and Little Contentnea Creek in southeastern Greene County, NC (Figure 1) (Phase 2). The project was a continuation of the successful Phase 1 project that restored 37.1 acres of riparian buffers along the unnamed tributary to Contentnea Creek. The Contentnea Creek/Little Contentnea Creek Riparian Buffer Restoration Plan was implemented in 2004 with site preparation, the planting of 26,000 saplings of 14 species, and the establishment of 53 monitoring quadrats in 16 sampling units, as specified in the project's Mitigation Plan (GES, 2004) (Figure 2).

Woody stem density, diameter, and height measurements were recorded in October 2006 within each of the 100 square meter quadrats, as detailed in the Mitigation Plan. The monitoring results, management activities to date, and planned management activities are presented below.

Results

During the fall 2006 monitoring, 538 planted woody stems were recorded within the 53 quadrats, resulting in an average density of 414 planted woody stems per acre (Figure 2) (Table 1). Additionally, a total of 2,059 *volunteer* woody stems were recorded inside the quadrats (833 *Acer rubrum* and 1,011 *Liquidambar styraciflua*). A total of 2,602 live stems woody stem were observed (1,986 stems per acre). **Average densities for planted stems and all live stems both indicate that the project has exceeded the success density criterion of 320 live woody stems per acre (129 percent and 620 percent, respectively).**

Monitoring data for planted stems indicate that *Fraxinus pennsylvanica* and *Platanus occidentalis* are the most abundant tree species (28.4 and 20.2 percent relative density). The average of relative diameter and relative density was calculated for planted species and is presented here as the importance value. Based on this calculation, *P. occidentalis* and *F. pennsylvanica* were the most important species in the project area, both with a value of 17.9 (Table 1). *Betula nigra* had the third-highest importance value, along with highest relative diameter (24.1 percent) and the greatest average height (12.25 feet). *Taxodium distichum* had the third-highest relative density among planted woody stems (12.7).

Maintenance (completed and planned) and Qualitative Observations

Like observed in 2005, areas that had a moderately dense canopy of early successional vegetation (e.g. *Conyza canadensis* and *Eupatorium capillifolium*, 60-80 percent foliar cover) experienced lower planted woody stem mortality. The herbaceous annual, biennial and short-lived perennial *pioneer* species appear to be maintaining soil moisture, which increases available water uptake by the planted individuals and reduces their evapotranspiration. Because planted species success quantitatively and qualitatively appears to be higher in areas with a moderately dense early successional herbaceous overstory, these areas will not be sprayed or cut in 2007.

Qualitative evaluation in late spring/early summer will identify locations with invasive, exotic woody species, including vines. Manual removal/control of the identified populations will involve machete and/or gasoline powered string trimmers, and, if necessary, very limited glyphosphate herbicide (Roundup) application, using hand pump or backpack sprayers with nose cone-tipped nozzles. *L. styraciflua* and *A. negundo*, which are by far the dominant *volunteer* woody stems counted or observed, are both native to southeastern Greene County and will not be removed. No other native woody stems that have colonized the restoration site will be removed, unless it's a necessary and unavoidable part of exotic invasive woody stem removal/management.

In areas with observed mortality in 2005, approximately 4,000 bare root saplings were planted during late January 2006. No problem areas were identified in 2006.

Browsing evidence was observed in a small number of monitoring units during 2006, but is much less common or threatening than in 2005. Threats to planted woody stem success from browsing will continue to be monitored, but the negative impact on stem success is expected continue to lessen as the trees age.

Table 1.1 Importance Values - Contentnea Creek/Little Contentnea Creek Riparian Buffer Restoration - Phase 2 - Greene County, NC

Species	Total Live Stems	Total Dead	Average Height (cm)	Average Height (feet)	Average Diameter (cm)	Relative Diameter (%)	Relative Density (%)	Importance Value
<i>Betula nigra</i>	30	4	373.5	12.3	6.0	24.1	5.5	14.8
<i>Fraxinus americana</i>	2		347.5	11.4	2.9	11.7	0.4	6.0
<i>Fraxinus pennsylvanica</i>	154	1	169.9	5.6	1.8	7.4	28.4	17.9
<i>Liriodendron tulipifera</i>	28		87.0	2.9	0.4	1.7	5.2	3.4
<i>Platanus occidentalis</i>	110		258.6	8.5	3.9	15.5	20.3	17.9
<i>Quercus alba</i>	3		126.1	4.1	0.9	3.5	0.6	2.0
<i>Quercus falcata</i>	16		90.1	3.0	1.1	4.3	2.9	3.6
<i>Quercus lyrata</i>	34		158.2	5.2	1.8	7.2	6.3	6.8
<i>Quercus michauxii</i>	30		177.4	5.8	1.3	5.1	5.5	5.3
<i>Quercus nigra</i>	10		116.2	3.8	0.8	3.4	1.8	2.6
<i>Quercus phellos</i>	43		154.4	5.1	2.0	8.2	7.9	8.1
<i>Quercus rubra</i>	14		69.1	2.3	0.7	2.8	2.6	2.7
<i>Taxodium distichum</i>	69		120.2	3.9	1.3	5.0	12.7	8.9
Total Planted	543	5						

Total Volunteers (Table 2) = 2059

Total Stems = 2602

Average/Acre (planted) = 414

Average/Acre (all stems) = 1986

Table 1.2 Natural Woody Stems (Volunteers) - Contentnea Creek/Little Contentnea Creek Riparian Buffer Restoration - Phase 2 - Greene County, NC

Natural Woody Stems	Total Live Stems														Total
	Seedling height class (cm)			Saplings (dbh) (cm)		Trees (dbh) (cm)									
	10-50	50-100	100-137	0-1	1-2.5	2.5	5	10	15	20	25	30	35	40+	
<i>Acer rubrum</i>	562	240	12	16	3	0	0	0	0	0	0	0	0	0	833
<i>Baccharus halimifolia</i>	0	4	5	7	9	1	0	0	0	0	0	0	0	0	26
<i>Carya spp.</i>	0	3	0	0	0	0	0	0	0	0	0	0	0	0	3
<i>Celtis spp.</i>	4	2	0	3	0	0	0	0	0	0	0	0	0	0	9
<i>Crataegus spp.</i>	1	0	0	0	0	0	0	0	0	0	0	0	0	0	1
<i>Diospyrus virginiana</i>	1	0	1	6	0	0	0	0	0	0	0	0	0	0	8
<i>Liquidambar styraciflua</i>	653	115	43	122	57	11	8	0	0	2	0	0	0	0	1011
<i>Morella cerifera</i>	2	0	0	2	0	0	0	0	0	0	0	0	0	0	4
<i>Pinus spp.</i>	48	72	26	5	2	0	0	0	0	0	0	0	0	0	153
<i>Platanus occidentalis</i>	1	1	0	0	0	0	0	0	0	0	0	0	0	0	2
<i>Quercus nigra</i>	1	4	0	0	0	0	0	0	0	0	0	0	0	0	5
<i>Quercus phellos</i>	0	1	0	1	0	1	0	0	0	0	0	0	0	0	3
<i>Ulmus americana</i>	0	1	0	0	0	0	0	0	0	0	0	0	0	0	1
	TOTAL														2059

Figure 1. General Location - Contentnea Creek/Little Contentnea Creek Riparian Buffer Restoration - Greene County, NC

Greene Environmental Services, LLC
 90 Ham Produce Road, Snow Hill, NC 28580 252-747-9255

LEGEND

Phase 2 Tracts

Little Contentnea Section (Stokes Farm)

● A ● B ● C ● D

Contentnea Section (Stokes and Moye Farms)

● D-1 ● E-1 ● E-2 ● F ● G-1 ● G-2

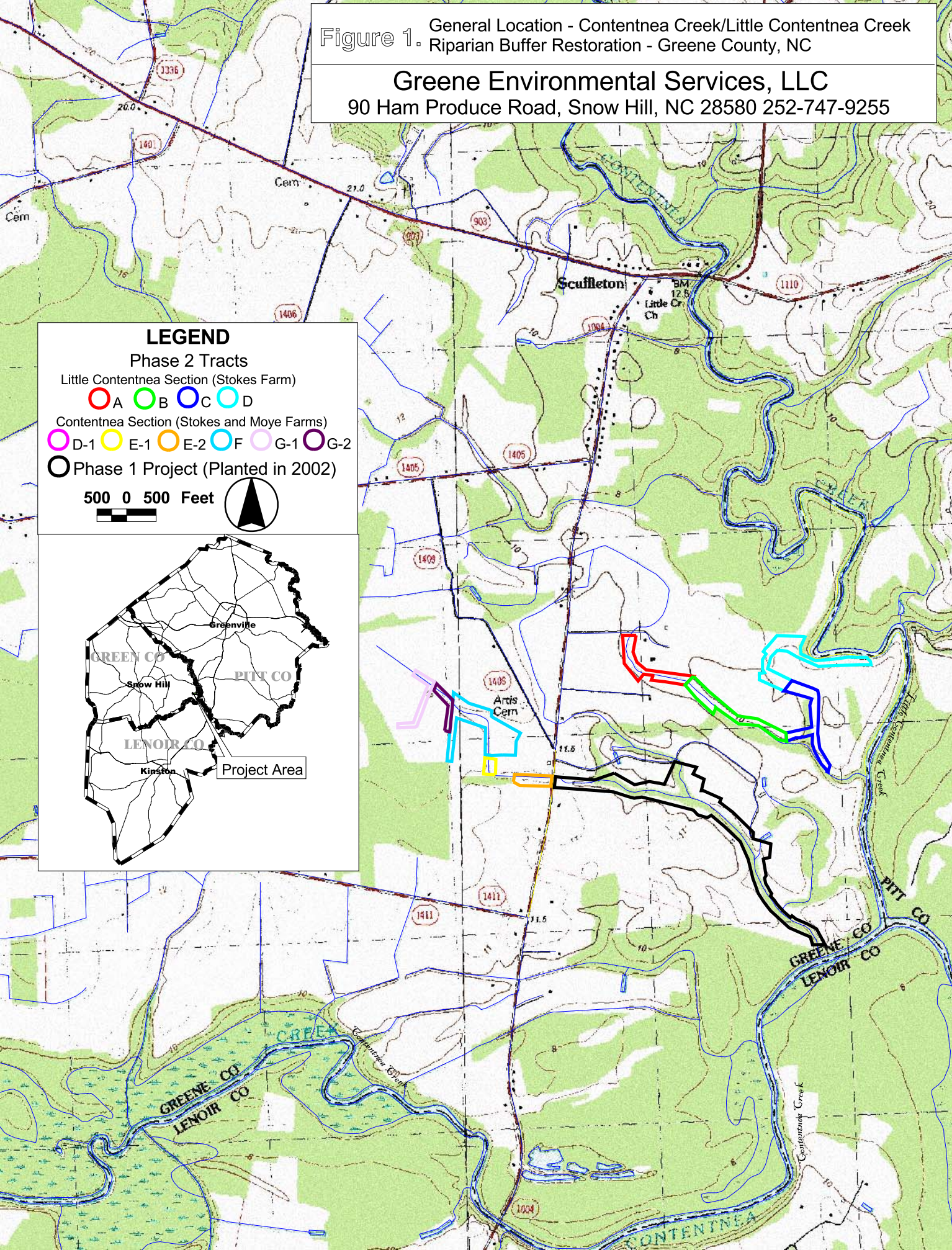
○ Phase 1 Project (Planted in 2002)

500 0 500 Feet

GREEN CO
 PITT CO
 LENOIR CO

Greenville
 Snow Hill
 Kinston

Project Area



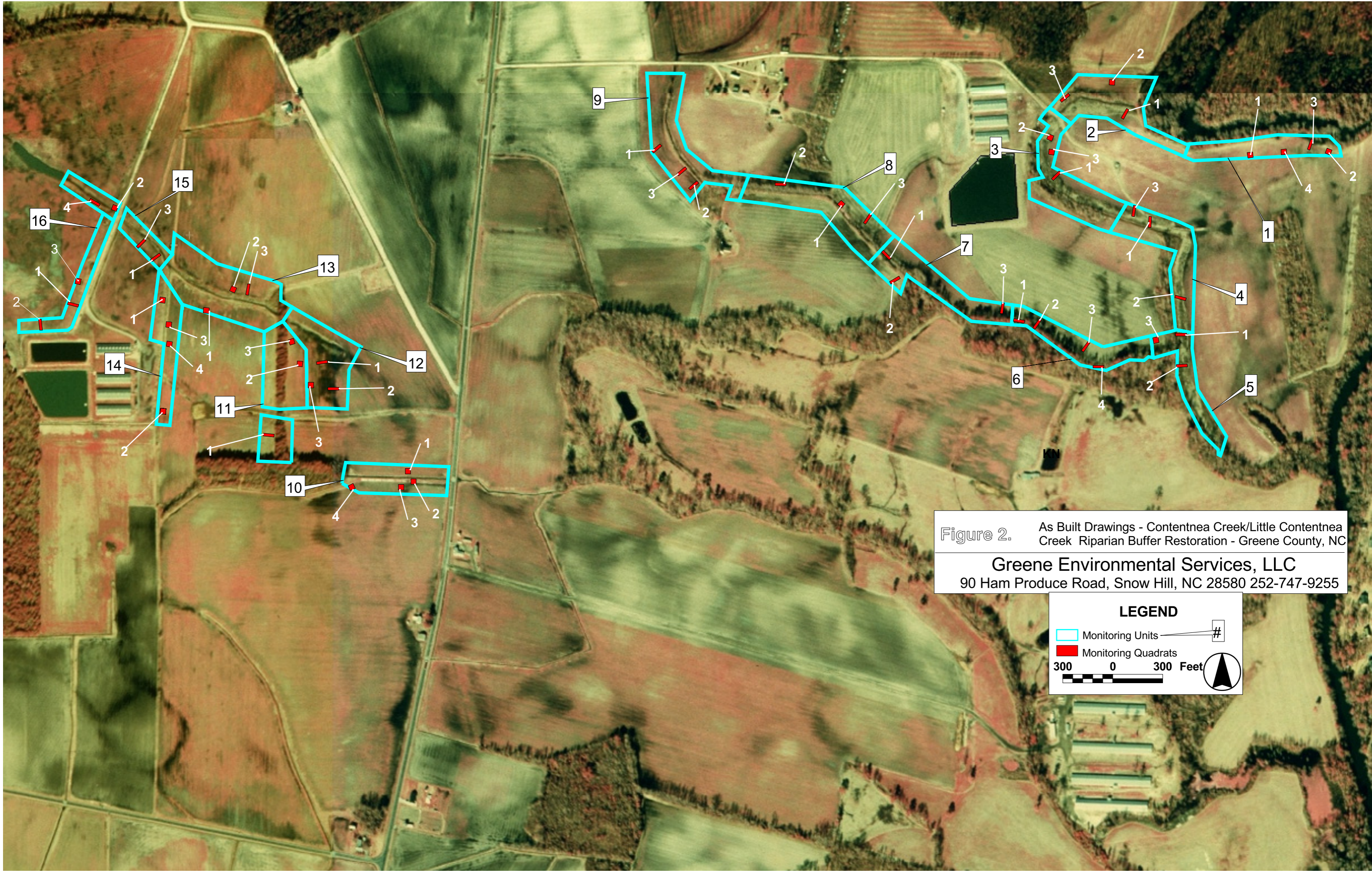





Figure 2. As Built Drawings - Contentnea Creek/Little Contentnea Creek Riparian Buffer Restoration - Greene County, NC

Greene Environmental Services, LLC
 90 Ham Produce Road, Snow Hill, NC 28580 252-747-9255

LEGEND

 Monitoring Units #
 Monitoring Quadrats
 300 0 300 Feet 

Permanent Quadrat Photographs - 2006 - Contentnea Creek/Little Contentnea Creek Riparian Buffer Restoration - Phase 2



Quadrat 1-1



Quadrat 1-2



Quadrat 1-3



Quadrat 1-4

Permanent Quadrat Photographs - 2006 - Contentnea Creek/Little Contentnea Creek Riparian Buffer Restoration - Phase 2



Quadrat 2-1



Quadrat 2-2



Quadrat 2-3



Quadrat 3-1

Permanent Quadrat Photographs - 2006 - Contentnea Creek/Little Contentnea Creek Riparian Buffer Restoration - Phase 2



Quadrat 3-2



Quadrat 3-3



Quadrat 4-1



Quadrat 4-2

Permanent Quadrat Photographs - 2006 - Contentnea Creek/Little Contentnea Creek Riparian Buffer Restoration - Phase 2



Quadrat 4-3



Quadrat 5-1



Quadrat 5-2



Quadrat 5-3

Permanent Quadrat Photographs - 2006 - Contentnea Creek/Little Contentnea Creek Riparian Buffer Restoration - Phase 2



Quadrat 6-1



Quadrat 6-2



Quadrat 6-3



Quadrat 6-4

Permanent Quadrat Photographs - 2006 - Contentnea Creek/Little Contentnea Creek Riparian Buffer Restoration - Phase 2



Quadrat 7-1



Quadrat 7-2



Quadrat 7-3



Quadrat 8-1

Permanent Quadrat Photographs - 2006 - Contentnea Creek/Little Contentnea Creek Riparian Buffer Restoration - Phase 2



Quadrat 8-2



Quadrat 8-3



Quadrat 9-1



Quadrat 9-2

Permanent Quadrat Photographs - 2006 - Contentnea Creek/Little Contentnea Creek Riparian Buffer Restoration - Phase 2



Quadrat 9-3



Quadrat 10-1



Quadrat 10-2



Quadrat 10-3

Permanent Quadrat Photographs - 2006 - Contentnea Creek/Little Contentnea Creek Riparian Buffer Restoration - Phase 2



Quadrat 10-4



Quadrat 11-1



Quadrat 11-2



Quadrat 11-3

Permanent Quadrat Photographs - 2006 - Contentnea Creek/Little Contentnea Creek Riparian Buffer Restoration - Phase 2



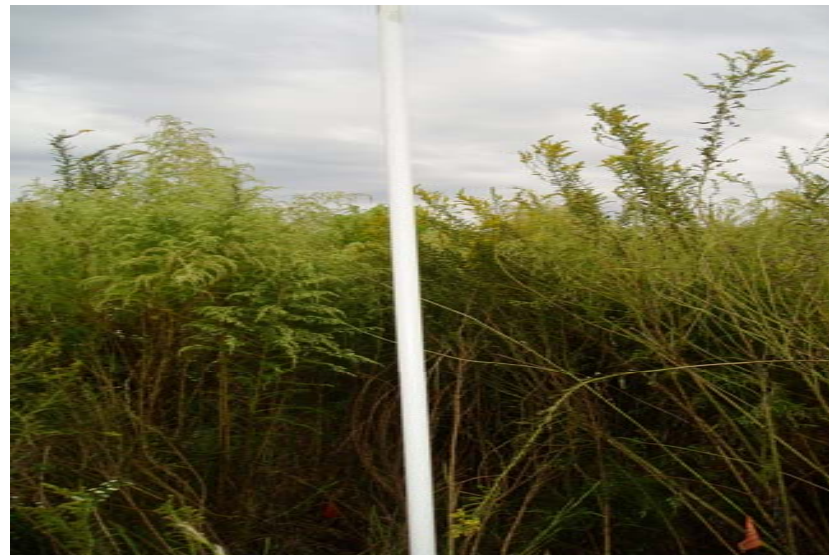
Quadrat 12-1



Quadrat 12-2



Quadrat 12-3



Quadrat 13-1

Permanent Quadrat Photographs - 2006 - Contentnea Creek/Little Contentnea Creek Riparian Buffer Restoration - Phase 2



Quadrat 13-2



Quadrat 13-3



Quadrat 14-1



Quadrat 14-2

Permanent Quadrat Photographs - 2006 - Contentnea Creek/Little Contentnea Creek Riparian Buffer Restoration - Phase 2



Quadrat 14-3



Quadrat 14-4



Quadrat 15-1



Quadrat 15-2

Permanent Quadrat Photographs - 2006 - Contentnea Creek/Little Contentnea Creek Riparian Buffer Restoration - Phase 2



Quadrat 15-3



Quadrat 16-1



Quadrat 16-2



Quadrat 16-3

Table 2. Plot 1-1. 2005 Monitoring Data - Little Contentnea Creek Riparian Buffer Restoration - Phase 3 - Greene County, NC.

Natural Woody stems	SEEDLING HT CLASS			SAPLINGS DBH		TREES - DBH								TOTAL	
	10-50cm	50-100cm	100-137cm	0-1 cm	1-2.5 cm	2.5	5	10	15	20	25	30	35		40
<i>Acer rubrum</i>															0
<i>Baccharis halimifolia</i>															0
<i>Carya spp</i>															0
<i>Celtis spp.</i>															0
<i>Crataegus spp</i>															0
<i>Diospyrus virginiana</i>		1													1
<i>Liquidambar styraciflua</i>															0
<i>Morella cerifera</i>															0
<i>Pinus spp.</i>															0
<i>Platanus occidentalis</i>															0
<i>Quercus nigra</i>															0
<i>Quercus phellos</i>															0
<i>Ulmus americana</i>															0
Total for plot														1	

Table 3. Plot 1-2. 2005 Monitoring Data - Little Contentnea Creek Riparian Buffer Restoration - Phase 3 - Greene County, NC.

Natural Woody stems	SEEDLING HT CLASS			SAPLINGS DBH		TREES - DBH								TOTAL	
	10-50cm	50-100cm	100-137cm	0-1 cm	1-2.5 cm	2.5	5	10	15	20	25	30	35		40
<i>Acer rubrum</i>	28	6													34
<i>Baccharis halimifolia</i>															0
<i>Carya spp</i>			3												3
<i>Celtis spp.</i>	2	2													4
<i>Crataegus spp</i>															0
<i>Diospyrus virginiana</i>				1											1
<i>Liquidambar styraciflua</i>	7	9	5	1											22
<i>Morella cerifera</i>															0
<i>Pinus spp.</i>				1											1
<i>Platanus occidentalis</i>															0
<i>Quercus nigra</i>															0
<i>Quercus phellos</i>															0
<i>Ulmus americana</i>			1												1

Total for plot 66

Table 4. Plot 1-3. 2005 Monitoring Data - Little Contentnea Creek Riparian Buffer Restoration - Phase 3 - Greene County, NC.

Species	Average Diameter (cm)	Average Height (cm)	Total Living	Total Dead	Diameter	Height	Diameter	Height	Diameter	Height	Diameter	Height	Diameter	Height	Diameter	Height
<i>Fraxinus americana</i>																
<i>Fraxinus pensylvanica</i>	10.50	245.35	2		6	155	15	335								
<i>Liriodendron tulipifera</i>																
<i>Platanus occidentalis</i>	80.00	548.60	2		90	549	70	549								
<i>Quercus nigra</i>																
<i>Quercus pagoda</i>																
<i>Quercus phellos</i>	0.85	92.95	2		0.8	85	0.9	101								
<i>Quercus rubra</i>																
<i>Quercus falcata</i>																
<i>Quercus michauxii</i>																
<i>Quercus lyrata</i>																
<i>Quercus alba</i>																
<i>Quercus spp.</i>																
<i>Taxodium distichum</i>																
<i>Betula nigra</i>																

Total/Average

6

Table 4. Plot 1-3. 2005 Monitoring Data - Little Contentnea Creek Riparian Buffer Restoration - Phase 3 - Greene County, NC.

	SEEDLING HT CLASS			SAPLINGS DBH		TREES - DBH								TOTAL	
	10-50cm	50-100cm	100-137cm	0-1 cm	1-2.5 cm	2.5	5	10	15	20	25	30	35		40
Natural Woody stems															
<i>Acer rubrum</i>	11														11
<i>Baccharis halimifolia</i>															0
<i>Carya spp</i>															0
<i>Celtis spp.</i>															0
<i>Crataegus spp</i>															0
<i>Diospyrus virginiana</i>															0
<i>Liquidambar styraciflua</i>															0
<i>Morella cerifera</i>															0
<i>Pinus spp.</i>															0
<i>Platanus occidentalis</i>															0
<i>Quercus nigra</i>															0
<i>Quercus phellos</i>															0
<i>Ulmus americana</i>															0

Total for plot 11

Table 5. Plot 1-4. 2005 Monitoring Data - Little Contentnea Creek Riparian Buffer Restoration - Phase 3 - Greene County, NC.

Species	Average Diameter (cm)	Average Height (cm)	Total Living	Total Dead	Diameter	Height	Diameter	Height	Diameter	Height	Diameter	Height	Diameter	Height	Diameter	Height
<i>Fraxinus americana</i>																
<i>Fraxinus pensylvanica</i>																
<i>Liriodendron tulipifera</i>	0.90	38.79	3		0.7	57	1.1	59	0.9	1.2						
<i>Platanus occidentalis</i>																
<i>Quercus nigra</i>																
<i>Quercus pagoda</i>																
<i>Quercus phellos</i>																
<i>Quercus rubra</i>																
<i>Quercus falcata</i>																
<i>Quercus michauxii</i>																
<i>Quercus lyrata</i>																
<i>Quercus alba</i>																
<i>Quercus spp.</i>																
<i>Taxodium distichum</i>																
<i>Betula nigra</i>	2.14	312.78	5		2.3	302	0.8	197	2	265	0.4	341	5.2	459		

Total/Average

8

Table 5. Plot 1-4. 2005 Monitoring Data - Little Contentnea Creek Riparian Buffer Restoration - Phase 3 - Greene County, NC.

Natural Woody stems	SEEDLING HT CLASS			SAPLINGS DBH		TREES - DBH								TOTAL	
	10-50cm	50-100cm	100-137cm	0-1 cm	1-2.5 cm	2.5	5	10	15	20	25	30	35	40	
<i>Acer rubrum</i>	25	8													33
<i>Baccharis halimifolia</i>		1													1
<i>Carya spp</i>															0
<i>Celtis spp.</i>															0
<i>Crataegus spp</i>		1													1
<i>Diospyrus virginiana</i>															0
<i>Liquidambar styraciflua</i>	17	13			1										31
<i>Morella cerifera</i>	1														1
<i>Pinus spp.</i>				1											1
<i>Platanus occidentalis</i>															0
<i>Quercus nigra</i>															0
<i>Quercus phellos</i>															0
<i>Ulmus americana</i>															0
Total for plot														68	

Table 61. Plot 2-1. 2005 Monitoring Data - Little Contentnea Creek Riparian Buffer Restoration - Phase 3 - Greene County, NC.

Species	Average Diameter (cm)	Average Height (cm)	Total Living	Total Dead	Diameter	Height	Diameter	Height	Diameter	Height	Diameter	Height	Diameter	Height	Diameter	Height
<i>Fraxinus americana</i>																
<i>Fraxinus pensylvanica</i>	1.05	156.20	2		0.9	204	1.2	108								
<i>Liriodendron tulipifera</i>	0.50	59.10	1		0.5	59										
<i>Platanus occidentalis</i>	0.70	72.50	1		0.7	73										
<i>Quercus nigra</i>																
<i>Quercus pagoda</i>																
<i>Quercus phellos</i>																
<i>Quercus rubra</i>	0.50	44.20	1		0.5	44										
<i>Quercus falcata</i>	1.50	121.90	1		1.5	122										
<i>Quercus michauxii</i>																
<i>Quercus lyrata</i>																
<i>Quercus alba</i>																
<i>Quercus spp.</i>																
<i>Taxodium distichum</i>	0.80	42.70	1		0.8	43										
<i>Betula nigra</i>																

Total/Average

7

Table 61. Plot 2-1. 2005 Monitoring Data - Little Contentnea Creek Riparian Buffer Restoration - Phase 3 - Greene County, NC.

Natural Woody stems	SEEDLING HT CLASS			SAPLINGS DBH			TREES - DBH							TOTAL	
	10-50cm	50-100cm	100-137cm	0-1 cm	1-2.5 cm	2.5	5	10	15	20	25	30	35		40
<i>Acer rubrum</i>	28	7													35
<i>Baccharis halimifolia</i>	1														0
<i>Carya spp</i>															0
<i>Celtis spp.</i>															0
<i>Crataegus spp</i>															0
<i>Diospyrus virginiana</i>															0
<i>Liquidambar styraciflua</i>	4	6	1	1		2	1								15
<i>Morella cerifera</i>															0
<i>Pinus spp.</i>															0
<i>Platanus occidentalis</i>															0
<i>Quercus nigra</i>															0
<i>Quercus phellos</i>															0
<i>Ulmus americana</i>															0

Total for plot 50

Table 6. Plot 2-2. 2005 Monitoring Data - Little Contentnea Creek Riparian Buffer Restoration - Phase 3 - Greene County, NC.

Species	Average Diameter (cm)	Average Height (cm)	Total Living	Total Dead	Diameter	Height	Diameter	Height	Diameter	Height	Diameter	Height	Diameter	Height	Diameter	Height
<i>Fraxinus americana</i>																
<i>Fraxinus pennsylvanica</i>	1.07	100.07	3		2.1	104	0.3	142	0.8	55						
<i>Liriodendron tulipifera</i>	2.10	193.07	3		1.7	125	1.6	104	3	351						
<i>Platanus occidentalis</i>																
<i>Quercus nigra</i>																
<i>Quercus pagoda</i>																
<i>Quercus phellos</i>	0.40	36.60	1		0.4	37										
<i>Quercus rubra</i>																
<i>Quercus falcata</i>																
<i>Quercus michauxii</i>																
<i>Quercus lyrata</i>																
<i>Quercus alba</i>																
<i>Quercus spp.</i>																
<i>Taxodium distichum</i>																
<i>Betula nigra</i>																

Total/Average

7

Table 6. Plot 2-2. 2005 Monitoring Data - Little Contentnea Creek Riparian Buffer Restoration - Phase 3 - Greene County, NC.

Natural Woody stems	SEEDLING HT CLASS			SAPLINGS DBH		TREES - DBH								TOTAL	
	10-50cm	50-100cm	100-137cm	0-1 cm	1-2.5 cm	2.5	5	10	15	20	25	30	35		40
<i>Acer rubrum</i>	1														1
<i>Baccharis halimifolia</i>															0
<i>Carya spp</i>															0
<i>Celtis spp.</i>															0
<i>Crataegus spp</i>															0
<i>Diospyrus virginiana</i>															0
<i>Liquidambar styraciflua</i>	30	10	15	6	5										66
<i>Morella cerifera</i>	1														1
<i>Pinus spp.</i>		1													1
<i>Platanus occidentalis</i>															0
<i>Quercus nigra</i>															0
<i>Quercus phellos</i>															0
<i>Ulmus americana</i>															0
Total for plot														69	

Table 7. Plot 2-3. 2005 Monitoring Data - Little Contentnea Creek Riparian Buffer Restoration - Phase 3 - Greene County, NC.

Species	Average Diameter (cm)	Average Height (cm)	Total Living	Total Dead	Diameter	Height	Diameter	Height	Diameter	Height	Diameter	Height	Diameter	Height	Diameter	Height
<i>Fraxinus americana</i>																
<i>Fraxinus pennsylvanica</i>	1.02	76.20	6		1.2	79	1.1	66	1.4	111	1.2	98	0.8	67	0.4	37
<i>Liriodendron tulipifera</i>	1.16	79.86	5		1.1	58	0.9	58	0.9	64	2	137	0.9	82		
<i>Platanus occidentalis</i>																
<i>Quercus nigra</i>																
<i>Quercus pagoda</i>																
<i>Quercus phellos</i>	1.40	109.70	1		1.4	110										
<i>Quercus rubra</i>																
<i>Quercus falcata</i>																
<i>Quercus michauxii</i>	0.60	39.60	1		0.6	40										
<i>Quercus lyrata</i>																
<i>Quercus alba</i>																
<i>Quercus spp.</i>																
<i>Taxodium distichum</i>	2.20	112.80	1		2.2	113										
<i>Betula nigra</i>																

Total/Average

14

Table 7. Plot 2-3. 2005 Monitoring Data - Little Contentnea Creek Riparian Buffer Restoration - Phase 3 - Greene County, NC.

Natural Woody stems	SEEDLING HT CLASS			SAPLINGS DBH		TREES - DBH								TOTAL	
	10-50cm	50-100cm	100-137cm	0-1 cm	1-2.5 cm	2.5	5	10	15	20	25	30	35		40
<i>Acer rubrum</i>	2														2
<i>Baccharis halimifolia</i>															0
<i>Carya spp</i>															0
<i>Celtis spp.</i>															0
<i>Crataegus spp</i>															0
<i>Diospyrus virginiana</i>															0
<i>Liquidambar styraciflua</i>	2	1													3
<i>Morella cerifera</i>															0
<i>Pinus spp.</i>															0
<i>Platanus occidentalis</i>															0
<i>Quercus nigra</i>															0
<i>Quercus phellos</i>															0
<i>Ulmus americana</i>															0
Total for plot														5	

Table 9. Plot 3-1. 2005 Monitoring Data - Little Contentnea Creek Riparian Buffer Restoration - Phase 3 - Greene County, NC.

Species	Average Diameter (cm)	Average Height (cm)	Total Living	Total Dead	Diameter	Height	Diameter	Height	Diameter	Height	Diameter	Height	Diameter	Height	Diameter	Height
<i>Fraxinus americana</i>																
<i>Fraxinus pensylvanica</i>	1.00	210.30	1		1	210										
<i>Liriodendron tulipifera</i>																
<i>Platanus occidentalis</i>																
<i>Quercus nigra</i>																
<i>Quercus pagoda</i>																
<i>Quercus phellos</i>																
<i>Quercus rubra</i>	0.80	73.20	1		0.8	73										
<i>Quercus falcata</i>																
<i>Quercus michauxii</i>																
<i>Quercus lyrata</i>	0.60	112.05	2		0.3	151	0.9	73								
<i>Quercus alba</i>																
<i>Quercus spp.</i>																
<i>Taxodium distichum</i>	1.40	106.65	2		1.5	104	1.3	110								
<i>Betula nigra</i>	6.40	441.95	2		6.2	427	6.6	457								

Total/Average

8

Table 9. Plot 3-1. 2005 Monitoring Data - Little Contentnea Creek Riparian Buffer Restoration - Phase 3 - Greene County, NC.

	SEEDLING HT CLASS			SAPLINGS DBH			TREES - DBH							TOTAL	
	10-50cm	50-100cm	100-137cm	0-1 cm	1-2.5 cm	2.5	5	10	15	20	25	30	35		40
Natural Woody stems															
<i>Acer rubrum</i>	200	3													203
<i>Baccharis halimifolia</i>															0
<i>Carya spp</i>															0
<i>Celtis spp.</i>															0
<i>Crataegus spp</i>															0
<i>Diospyrus virginiana</i>															0
<i>Liquidambar styraciflua</i>	100														100
<i>Morella cerifera</i>															0
<i>Pinus spp.</i>															0
<i>Platanus occidentalis</i>															0
<i>Quercus nigra</i>															0
<i>Quercus phellos</i>															0
<i>Ulmus americana</i>															0

Total for plot 303

Table 10. Plot 3-2. 2005 Monitoring Data - Little Contentnea Creek Riparian Buffer Restoration - Phase 3 - Greene County, NC.

Natural Woody stems	SEEDLING HT CLASS			SAPLINGS DBH			TREES - DBH							TOTAL	
	10-50cm	50-100cm	100-137cm	0-1 cm	1-2.5 cm	2.5	5	10	15	20	25	30	35		40
<i>Acer rubrum</i>															0
<i>Baccharis halimifolia</i>															0
<i>Carya spp</i>															0
<i>Celtis spp.</i>															0
<i>Crataegus spp</i>															0
<i>Diospyrus virginiana</i>															0
<i>Liquidambar styraciflua</i>	25														25
<i>Morella cerifera</i>															0
<i>Pinus spp.</i>															0
<i>Platanus occidentalis</i>															0
<i>Quercus nigra</i>															0
<i>Quercus phellos</i>															0
<i>Ulmus americana</i>															0

Total for plot 25

Table 11. Plot 3-3. 2005 Monitoring Data - Little Contentnea Creek Riparian Buffer Restoration - Phase 3 - Greene County, NC.

Natural Woody stems	SEEDLING HT CLASS			SAPLINGS DBH		TREES - DBH								TOTAL	
	10-50cm	50-100cm	100-137cm	0-1 cm	1-2.5 cm	2.5	5	10	15	20	25	30	35		40
<i>Acer rubrum</i>															0
<i>Baccharis halimifolia</i>															0
<i>Carya spp</i>															0
<i>Celtis spp.</i>															0
<i>Crataegus spp</i>															0
<i>Diospyrus virginiana</i>															0
<i>Liquidambar styraciflua</i>	1														1
<i>Morella cerifera</i>															0
<i>Pinus spp.</i>															0
<i>Platanus occidentalis</i>															0
<i>Quercus nigra</i>															0
<i>Quercus phellos</i>															0
<i>Ulmus americana</i>															0
Total for plot														1	

Table 12. Plot 4-1. 2005 Monitoring Data - Little Contentnea Creek Riparian Buffer Restoration - Phase 3 - Greene County, NC.

Natural Woody stems	SEEDLING HT CLASS			SAPLINGS DBH		TREES - DBH								TOTAL	
	10-50cm	50-100cm	100-137cm	0-1 cm	1-2.5 cm	2.5	5	10	15	20	25	30	35		40
<i>Acer rubrum</i>	12	4													16
<i>Baccharis halimifolia</i>															0
<i>Carya spp</i>															0
<i>Celtis spp.</i>															0
<i>Crataegus spp</i>															0
<i>Diospyrus virginiana</i>															0
<i>Liquidambar styraciflua</i>	8														8
<i>Morella cerifera</i>															0
<i>Pinus spp.</i>															0
<i>Platanus occidentalis</i>															0
<i>Quercus nigra</i>															0
<i>Quercus phellos</i>															0
<i>Ulmus americana</i>															0
Total for plot														24	

Table 13. Plot 4-2. 2005 Monitoring Data - Little Contentnea Creek Riparian Buffer Restoration - Phase 3 - Greene County, NC.

Species	Average Diameter (cm)	Average Height (cm)	Total Living	Total Dead	Diameter	Height	Diameter	Height	Diameter	Height	Diameter	Height	Diameter	Height	Diameter	Height
<i>Fraxinus americana</i>																
<i>Fraxinus pensylvanica</i>																
<i>Liriodendron tulipifera</i>																
<i>Platanus occidentalis</i>	8.30	640.10	1		8.3	640										
<i>Quercus nigra</i>	0.85	216.40	2		0.7	210	1	223								
<i>Quercus pagoda</i>																
<i>Quercus phellos</i>	1.40	140.20	1		1.4	140										
<i>Quercus rubra</i>																
<i>Quercus falcata</i>																
<i>Quercus michauxii</i>																
<i>Quercus lyrata</i>																
<i>Quercus alba</i>																
<i>Quercus spp.</i>																
<i>Taxodium distichum</i>	0.75	47.25	2		1	73	0.5	21								
<i>Betula nigra</i>																

Total/Average

6

Table 13. Plot 4-2. 2005 Monitoring Data - Little Contentnea Creek Riparian Buffer Restoration - Phase 3 - Greene County, NC.

Natural Woody stems	SEEDLING HT CLASS			SAPLINGS DBH			TREES - DBH								TOTAL
	10-50cm	50-100cm	100-137cm	0-1 cm	1-2.5 cm	2.5	5	10	15	20	25	30	35	40	
<i>Acer rubrum</i>	200	2													202
<i>Baccharis halimifolia</i>															0
<i>Carya spp</i>															0
<i>Celtis spp.</i>															0
<i>Crataegus spp</i>															0
<i>Diospyrus virginiana</i>															0
<i>Liquidambar styraciflua</i>	300	4													304
<i>Morella cerifera</i>															0
<i>Pinus spp.</i>															0
<i>Platanus occidentalis</i>															0
<i>Quercus nigra</i>															0
<i>Quercus phellos</i>															0
<i>Ulmus americana</i>															0

Total for plot 506

Table 14. Plot 4-3. 2005 Monitoring Data - Little Contentnea Creek Riparian Buffer Restoration - Phase 3 - Greene County, NC.

Species	Average Diameter (cm)	Average Height (cm)	Total Living	Total Dead	Diameter	Height	Diameter	Height	Diameter	Height	Diameter	Height	Diameter	Height	Diameter	Height
<i>Fraxinus americana</i>																
<i>Fraxinus pensylvanica</i>																
<i>Liriodendron tulipifera</i>																
<i>Platanus occidentalis</i>																
<i>Quercus nigra</i>																
<i>Quercus pagoda</i>																
<i>Quercus phellos</i>	2.24	115.50	5		7	194	0.2	15	1.1	76	2	223	0.9	70		
<i>Quercus rubra</i>	0.80	57.90	1		0.8	58										
<i>Quercus falcata</i>																
<i>Quercus michauxii</i>	4.00	128.00	1		4	128										
<i>Quercus lyrata</i>																
<i>Quercus alba</i>																
<i>Quercus spp.</i>																
<i>Taxodium distichum</i>	1.70	125.00	1		1.7	125										
<i>Betula nigra</i>																

Total/Average

8

Table 14. Plot 4-3. 2005 Monitoring Data - Little Contentnea Creek Riparian Buffer Restoration - Phase 3 - Greene County, NC.

Natural Woody stems	SEEDLING HT CLASS			SAPLINGS DBH		TREES - DBH								TOTAL	
	10-50cm	50-100cm	100-137cm	0-1 cm	1-2.5 cm	2.5	5	10	15	20	25	30	35		40
<i>Acer rubrum</i>	12	4	1												17
<i>Baccharis halimifolia</i>				1											1
<i>Carya spp</i>															0
<i>Celtis spp.</i>															0
<i>Crataegus spp</i>															0
<i>Diospyrus virginiana</i>															0
<i>Liquidambar styraciflua</i>	1	1	1												3
<i>Morella cerifera</i>															0
<i>Pinus spp.</i>															0
<i>Platanus occidentalis</i>															0
<i>Quercus nigra</i>															0
<i>Quercus phellos</i>															0
<i>Ulmus americana</i>															0
Total for plot														21	

Table 15. Plot 5-1. 2005 Monitoring Data - Little Contentnea Creek Riparian Buffer Restoration - Phase 3 - Greene County, NC.

Species	Average Diameter (cm)	Average Height (cm)	Total Living	Total Dead	Diameter	Height	Diameter	Height	Diameter	Height	Diameter	Height	Diameter	Height	Diameter	Height
<i>Fraxinus americana</i>																
<i>Fraxinus pensylvanica</i>																
<i>Liriodendron tulipifera</i>																
<i>Platanus occidentalis</i>	7.20	481.60	1		7.2	482										
<i>Quercus nigra</i>	0.70	73.20	1		0.7	73										
<i>Quercus pagoda</i>																
<i>Quercus phellos</i>																
<i>Quercus rubra</i>																
<i>Quercus falcata</i>																
<i>Quercus michauxii</i>																
<i>Quercus lyrata</i>																
<i>Quercus alba</i>																
<i>Quercus spp.</i>																
<i>Taxodium distichum</i>	0.53	115.83	3		0.4	37	0.3	146	0.9	165						
<i>Betula nigra</i>	1.80	286.55	2		1.1	220	2.5	354								

Total/Average

7

Table 15. Plot 5-1. 2005 Monitoring Data - Little Contentnea Creek Riparian Buffer Restoration - Phase 3 - Greene County, NC.

Natural Woody stems	SEEDLING HT CLASS			SAPLINGS DBH			TREES - DBH							TOTAL	
	10-50cm	50-100cm	100-137cm	0-1 cm	1-2.5 cm	2.5	5	10	15	20	25	30	35		40
<i>Acer rubrum</i>	1	1													2
<i>Baccharis halimifolia</i>															0
<i>Carya spp</i>															0
<i>Celtis spp.</i>															0
<i>Crataegus spp</i>															0
<i>Diospyrus virginiana</i>															0
<i>Liquidambar styraciflua</i>	7														7
<i>Morella cerifera</i>															0
<i>Pinus spp.</i>															0
<i>Platanus occidentalis</i>															0
<i>Quercus nigra</i>															0
<i>Quercus phellos</i>															0
<i>Ulmus americana</i>															0

Total for plot 9

Table 16. Plot 5-2. 2005 Monitoring Data - Little Contentnea Creek Riparian Buffer Restoration - Phase 3 - Greene County, NC.

WSX\X

Species	Average Diameter (cm)	Average Height (cm)	Total Living	Total Dead	Diameter	Height	Diameter	Height	Diameter	Height	Diameter	Height	Diameter	Height	Diameter	Height
<i>Fraxinus americana</i>																
<i>Fraxinus pensylvanica</i>																
<i>Liriodendron tulipifera</i>																
<i>Platanus occidentalis</i>	5.00	502.95	2		5	518	5	488								
<i>Quercus nigra</i>	1.00	70.10	1		1	70										
<i>Quercus pagoda</i>																
<i>Quercus phellos</i>	1.00	100.60	1		1	101										
<i>Quercus rubra</i>																
<i>Quercus falcata</i>																
<i>Quercus michauxii</i>																
<i>Quercus lyrata</i>																
<i>Quercus alba</i>																
<i>Quercus spp.</i>																
<i>Taxodium distichum</i>	0.80	173.70	1		0.8	174										
<i>Betula nigra</i>	2.70	381.00	1		2.7	381										

Total/Average

6

Table 16. Plot 5-2. 2005 Monitoring Data - Little Contentnea Creek Riparian Buffer Restoration - Phase 3 - Greene County, NC.

Natural Woody stems	SEEDLING HT CLASS			SAPLINGS DBH		TREES - DBH								TOTAL	
	10-50cm	50-100cm	100-137cm	0-1 cm	1-2.5 cm	2.5	5	10	15	20	25	30	35		40
<i>Acer rubrum</i>															0
<i>Baccharis halimifolia</i>															0
<i>Carya spp</i>															0
<i>Celtis spp.</i>															0
<i>Crataegus spp</i>															0
<i>Diospyrus virginiana</i>															0
<i>Liquidambar styraciflua</i>	16	10	4	2											32
<i>Morella cerifera</i>															0
<i>Pinus spp.</i>															0
<i>Platanus occidentalis</i>															0
<i>Quercus nigra</i>															0
<i>Quercus phellos</i>															0
<i>Ulmus americana</i>															0

Total for plot 32

Table 17. Plot 5-3. 2005 Monitoring Data - Little Contentnea Creek Riparian Buffer Restoration - Phase 3 - Greene County, NC.

Species	Average Diameter (cm)	Average Height (cm)	Total Living	Total Dead	Diameter	Height	Diameter	Height	Diameter	Height	Diameter	Height	Diameter	Height	Diameter	Height
<i>Fraxinus americana</i>																
<i>Fraxinus pensylvanica</i>	0.60	48.78	4	1	0.8	67	0.6	64	0.2	12	0.8	52	d	d		
<i>Liriodendron tulipifera</i>																
<i>Platanus occidentalis</i>	5.23	232.67	3		2.4	305	13	250	0.3	143						
<i>Quercus nigra</i>																
<i>Quercus pagoda</i>																
<i>Quercus phellos</i>																
<i>Quercus rubra</i>																
<i>Quercus falcata</i>																
<i>Quercus michauxii</i>																
<i>Quercus lyrata</i>																
<i>Quercus alba</i>																
<i>Quercus spp.</i>																
<i>Taxodium distichum</i>	0.60	56.90	3	1	0.7	91	0.9	67	0.2	12	d	d				
<i>Betula nigra</i>																

Total/Average

10

Table 17. Plot 5-3. 2005 Monitoring Data - Little Contentnea Creek Riparian Buffer Restoration - Phase 3 - Greene County, NC.

Natural Woody stems	SEEDLING HT CLASS			SAPLINGS DBH			TREES - DBH							TOTAL	
	10-50cm	50-100cm	100-137cm	0-1 cm	1-2.5 cm	2.5	5	10	15	20	25	30	35		40
<i>Acer rubrum</i>	5														5
<i>Baccharis halimifolia</i>															0
<i>Carya spp</i>															0
<i>Celtis spp.</i>															0
<i>Crataegus spp</i>															0
<i>Diospyrus virginiana</i>															0
<i>Liquidambar styraciflua</i>	11	4													15
<i>Morella cerifera</i>															0
<i>Pinus spp.</i>															0
<i>Platanus occidentalis</i>															0
<i>Quercus nigra</i>															0
<i>Quercus phellos</i>															0
<i>Ulmus americana</i>															0

Total for plot 20

Table 18. Plot 6-1. 2005 Monitoring Data - Little Contentnea Creek Riparian Buffer Restoration - Phase 3 - Greene County, NC.

Species	Average Diameter (cm)	Average Height (cm)	Total Living	Total Dead	Diameter	Height	Diameter	Height	Diameter	Height	Diameter	Height	Diameter	Height	Diameter	Height
<i>Fraxinus americana</i>																
<i>Fraxinus pensylvanica</i>	2.53	162.63	14		1.3	73	1.5	67	1.9	253	0.9	46	1.9	244	2	265
<i>Liriodendron tulipifera</i>																
<i>Platanus occidentalis</i>																
<i>Quercus nigra</i>																
<i>Quercus pagoda</i>																
<i>Quercus phellos</i>																
<i>Quercus rubra</i>																
<i>Quercus falcata</i>																
<i>Quercus michauxii</i>																
<i>Quercus lyrata</i>																
<i>Quercus alba</i>																
<i>Quercus spp.</i>																
<i>Taxodium distichum</i>																
<i>Betula nigra</i>																

Total/Average

14

Table 2. Plot 1-1. 2005 Monitoring Data - Little Contentnea Creek Riparian Buffer Restoration - Phase 3 - Greene County, NC.

Species	Average Diameter (cm)	Average Height (cm)	Total Living	Total Dead	Diameter	Height	Diameter	Height	Diameter	Height	Diameter	Height	Diameter	Height	Diameter	Height	Diameter	Height
<i>Fraxinus americana</i>																		
<i>Fraxinus pennsylvanica</i>	0.97	67.03	3		0.9	76.2	0.8	45.7	1.2	79.2								
<i>Liriodendron tulipifera</i>	0.40	24.36	5		0.4	39.6	0.7	27.4	0.2	12.2	0.2	21.3	0.5	21.3				
<i>Platanus occidentalis</i>	0.73	69.27	7		1.3	128	0.6	45.7	0.4	33.5	0.7	36.9	0.7	70.1	0.5	64	0.9	107
<i>Quercus nigra</i>																		
<i>Quercus pagoda</i>																		
<i>Quercus phellos</i>	3.90	169.20	3		0.3	163	11	213	0.4	131								
<i>Quercus rubra</i>																		
<i>Quercus falcata</i>																		
<i>Quercus michauxii</i>																		
<i>Quercus lyrata</i>																		
<i>Quercus alba</i>																		
<i>Quercus spp.</i>																		
<i>Taxodium distichum</i>																		
<i>Betula nigra</i>	40.00	335.30	2		55	366	25	305										

Total/Average **20** **0**

Table 18. Plot 6-1. 2005 Monitoring Data - Little Contentnea Creek Riparian Buffer Restoration - Phase 3

Species	Diameter	Height	Diameter	Height	Diameter	Height	Diameter	Height	Diameter	Height	Diameter	Height	Diameter	Height	Diameter	Height
<i>Fraxinus americana</i>																
<i>Fraxinus pensylvanica</i>	13	229	1.3	67	1.5	82	1.9	113	1.7	168	2.6	290	2.8	335	1.1	46
<i>Liriodendron tulipifera</i>																
<i>Platanus occidentalis</i>																
<i>Quercus nigra</i>																
<i>Quercus pagoda</i>																
<i>Quercus phellos</i>																
<i>Quercus rubra</i>																
<i>Quercus falcata</i>																
<i>Quercus michauxii</i>																
<i>Quercus lyrata</i>																
<i>Quercus alba</i>																
<i>Quercus spp.</i>																
<i>Taxodium distichum</i>																
<i>Betula nigra</i>																

Total/Average

Table 18. Plot 6-1. 2005 Monitoring Data - Little Contentnea Creek Riparian Buffer Restoration - Phase 3 - Greene County, NC.

Natural Woody stems	SEEDLING HT CLASS			SAPLINGS DBH			TREES - DBH								TOTAL
	10-50cm	50-100cm	100-137cm	0-1 cm	1-2.5 cm	2.5	5	10	15	20	25	30	35	40	
<i>Acer rubrum</i>															0
<i>Baccharis halimifolia</i>															0
<i>Carya spp</i>															0
<i>Celtis spp.</i>															0
<i>Crataegus spp</i>															0
<i>Diospyrus virginiana</i>															0
<i>Liquidambar styraciflua</i>	6		1	1	1										9
<i>Morella cerifera</i>															0
<i>Pinus spp.</i>															0
<i>Platanus occidentalis</i>															0
<i>Quercus nigra</i>															0
<i>Quercus phellos</i>															0
<i>Ulmus americana</i>															0
Total for plot														9	

Table 19. Plot 6-2. 2005 Monitoring Data - Little Contentnea Creek Riparian Buffer Restoration - Phase 3 - Greene County, NC.

Species	Average Diameter (cm)	Average Height (cm)	Total Living	Total Dead	Diameter	Height	Diameter	Height	Diameter	Height	Diameter	Height	Diameter	Height	Diameter	Height	Diameter	Height	Diameter	Height
<i>Fraxinus americana</i>																				
<i>Fraxinus pensylvanica</i>	2.03	230.96	8		1.2	198	1.3	98	2.7	320	1.8	284	0.9	183	2.8	381	2.3	311	3.2	74
<i>Liriodendron tulipifera</i>																				
<i>Platanus occidentalis</i>	4.25	464.80	2		4.7	457	3.8	472												
<i>Quercus nigra</i>																				
<i>Quercus pagoda</i>																				
<i>Quercus phellos</i>																				
<i>Quercus rubra</i>																				
<i>Quercus falcata</i>																				
<i>Quercus michauxii</i>																				
<i>Quercus lyrata</i>																				
<i>Quercus alba</i>																				
<i>Quercus spp.</i>																				
<i>Taxodium distichum</i>																				
<i>Betula nigra</i>																				

Total/Average

10

Table 19. Plot 6-2. 2005 Monitoring Data - Little Contentnea Creek Riparian Buffer Restoration - Phase 3 - Greene County, NC.

Natural Woody stems	SEEDLING HT CLASS			SAPLINGS DBH		TREES - DBH								TOTAL	
	10-50cm	50-100cm	100-137cm	0-1 cm	1-2.5 cm	2.5	5	10	15	20	25	30	35		40
<i>Acer rubrum</i>															0
<i>Baccharis halimifolia</i>															0
<i>Carya spp</i>															0
<i>Celtis spp.</i>															0
<i>Crataegus spp</i>															0
<i>Diospyrus virginiana</i>															0
<i>Liquidambar styraciflua</i>	10	2	4												16
<i>Morella cerifera</i>															0
<i>Pinus spp.</i>															0
<i>Platanus occidentalis</i>															0
<i>Quercus nigra</i>															0
<i>Quercus phellos</i>															0
<i>Ulmus americana</i>															0

Total for plot 16

Table 20. Plot 6-3. 2005 Monitoring Data - Little Contentnea Creek Riparian Buffer Restoration - Phase 3 - Greene County, NC.

Species	Average Diameter (cm)	Average Height (cm)	Total Living	Total Dead	Diameter	Height	Diameter	Height	Diameter	Height	Diameter	Height	Diameter	Height	Diameter	Height
<i>Fraxinus americana</i>																
<i>Fraxinus pensylvanica</i>	0.60	156.10	1		0.6	156										
<i>Liriodendron tulipifera</i>																
<i>Platanus occidentalis</i>	1.10	160.43	12		0.4	79	1.2	216	1	106	0.8	109	1.3	125	0.8	162
<i>Quercus nigra</i>																
<i>Quercus pagoda</i>																
<i>Quercus phellos</i>																
<i>Quercus rubra</i>																
<i>Quercus falcata</i>	1.10	72.50	1		1.1	73										
<i>Quercus michauxii</i>																
<i>Quercus lyrata</i>	0.90	142.38	4		1.2	80	0.4	144	0.4	138	1.6	207				
<i>Quercus alba</i>																
<i>Quercus spp.</i>																
<i>Taxodium distichum</i>																
<i>Betula nigra</i>																

Total/Average

Table 20. Plot 6-3. 2005 Monitoring Data - Little Contentnea Creek Riparian Buffer Restoration - Phase 3 - Greene County, NC

Species	Diameter	Height	Diameter	Height	Diameter	Height	Diameter	Height	Diameter	Height	Diameter	Height	Diameter	Height	Diameter	Height
<i>Fraxinus americana</i>																
<i>Fraxinus pensylvanica</i>																
<i>Liriodendron tulipifera</i>																
<i>Platanus occidentalis</i>	0.8	152	2.2	241	1.7	251	1.1	104	0.8	194	1.1	188				
<i>Quercus nigra</i>																
<i>Quercus pagoda</i>																
<i>Quercus phellos</i>																
<i>Quercus rubra</i>																
<i>Quercus falcata</i>																
<i>Quercus michauxii</i>																
<i>Quercus lyrata</i>																
<i>Quercus alba</i>																
<i>Quercus spp.</i>																
<i>Taxodium distichum</i>																
<i>Betula nigra</i>																

Total/Average

Table 20. Plot 6-3. 2005 Monitoring Data - Little Contentnea Creek Riparian Buffer Restoration - Phase 3 - Greene County, NC.

Natural Woody stems	SEEDLING HT CLASS			SAPLINGS DBH			TREES - DBH								TOTAL
	10-50cm	50-100cm	100-137cm	0-1 cm	1-2.5 cm	2.5	5	10	15	20	25	30	35	40	
<i>Acer rubrum</i>	24														24
<i>Baccharis halimifolia</i>															0
<i>Carya spp</i>															0
<i>Celtis spp.</i>															0
<i>Crataegus spp</i>															0
<i>Diospyrus virginiana</i>															0
<i>Liquidambar styraciflua</i>	9														9
<i>Morella cerifera</i>															0
<i>Pinus spp.</i>		1	4												5
<i>Platanus occidentalis</i>															0
<i>Quercus nigra</i>															0
<i>Quercus phellos</i>															0
<i>Ulmus americana</i>															0
Total for plot														38	

Table 21. Plot 6-4. 2005 Monitoring Data - Little Contentnea Creek Riparian Buffer Restoration - Phase 3 - Greene County, NC.

Species	Average Diameter (cm)	Average Height (cm)	Total Living	Total Dead	Diameter	Height	Diameter	Height	Diameter	Height	Diameter	Height	Diameter	Height	Diameter	Height
<i>Fraxinus americana</i>																
<i>Fraxinus pensylvanica</i>																
<i>Liriodendron tulipifera</i>																
<i>Platanus occidentalis</i>	0.90	134.10	1		0.9	134										
<i>Quercus nigra</i>																
<i>Quercus pagoda</i>																
<i>Quercus phellos</i>	13.00	283.45	2		25	338	1	229								
<i>Quercus rubra</i>																
<i>Quercus falcata</i>																
<i>Quercus michauxii</i>																
<i>Quercus lyrata</i>	2.35	142.36	17		1.4	229	1.5	244	0.7	186	1	213	0.7	189	0.5	49
<i>Quercus alba</i>																
<i>Quercus spp.</i>																
<i>Taxodium distichum</i>																
<i>Betula nigra</i>																

Total/Average **20**

Table 21. Plot 6-4. 2005 Monitoring Data - Little Contentnea Creek Riparian Buffer Restoration - Phase 3 - Greene County, NC

Species	Diameter	Height	Diameter	Height	Diameter	Height	Diameter	Height	Diameter	Height	Diameter	Height	Diameter	Height	Diameter	Height	Diameter	Height	Diameter	Height	Diameter	Height	
<i>Fraxinus americana</i>																							
<i>Fraxinus pensylvanica</i>																							
<i>Liriodendron tulipifera</i>																							
<i>Platanus occidentalis</i>																							
<i>Quercus nigra</i>																							
<i>Quercus pagoda</i>																							
<i>Quercus phellos</i>																							
<i>Quercus rubra</i>																							
<i>Quercus falcata</i>																							
<i>Quercus michauxii</i>																							
<i>Quercus lyrata</i>	8	207	1.2	79	6	165	0.5	149	1.6	174	1.5	134	5	165	0.4	24	8	70	1.2	98	0.8	46	
<i>Quercus alba</i>																							
<i>Quercus spp.</i>																							
<i>Taxodium distichum</i>																							
<i>Betula nigra</i>																							

Total/Average

Table 21. Plot 6-4. 2005 Monitoring Data - Little Contentnea Creek Riparian Buffer Restoration - Phase 3 - Greene County, NC.

Natural Woody stems	SEEDLING HT CLASS			SAPLINGS DBH		TREES - DBH								TOTAL	
	10-50cm	50-100cm	100-137cm	0-1 cm	1-2.5 cm	2.5	5	10	15	20	25	30	35		40
<i>Acer rubrum</i>	4														4
<i>Baccharis halimifolia</i>															0
<i>Carya spp</i>															0
<i>Celtis spp.</i>															0
<i>Crataegus spp</i>															0
<i>Diospyrus virginiana</i>															0
<i>Liquidambar styraciflua</i>			1												1
<i>Morella cerifera</i>															0
<i>Pinus spp.</i>															0
<i>Platanus occidentalis</i>															0
<i>Quercus nigra</i>		4													4
<i>Quercus phellos</i>		1													1
<i>Ulmus americana</i>															0
Total for plot														10	

Table 22. Plot 7-1. 2005 Monitoring Data - Little Contentnea Creek Riparian Buffer Restoration - Phase 3 - Greene County, NC

Species	Diameter	Height	Diameter	Height	Diameter	Height	Diameter	Height	Diameter	Height	Diameter	Height	Diameter	Height	Diameter	Height
<i>Fraxinus americana</i>																
<i>Fraxinus pensylvanica</i>																
<i>Liriodendron tulipifera</i>																
<i>Platanus occidentalis</i>																
<i>Quercus nigra</i>																
<i>Quercus pagoda</i>																
<i>Quercus phellos</i>																
<i>Quercus rubra</i>																
<i>Quercus falcata</i>																
<i>Quercus michauxii</i>																
<i>Quercus lyrata</i>																
<i>Quercus alba</i>																
<i>Quercus spp.</i>																
<i>Taxodium distichum</i>	0.6	170	1	95	1.9	213										
<i>Betula nigra</i>																

Total/Average

Table 22. Plot 7-1. 2005 Monitoring Data - Little Contentnea Creek Riparian Buffer Restoration - Phase 3 - Greene County, NC.

Natural Woody stems	SEEDLING HT CLASS			SAPLINGS DBH			TREES - DBH								TOTAL
	10-50cm	50-100cm	100-137cm	0-1 cm	1-2.5 cm	2.5	5	10	15	20	25	30	35	40	
<i>Acer rubrum</i>															0
<i>Baccharis halimifolia</i>															0
<i>Carya spp</i>															0
<i>Celtis spp.</i>															0
<i>Crataegus spp</i>															0
<i>Diospyrus virginiana</i>															0
<i>Liquidambar styraciflua</i>	1	1			1					2					5
<i>Morella cerifera</i>															0
<i>Pinus spp.</i>															0
<i>Platanus occidentalis</i>															0
<i>Quercus nigra</i>															0
<i>Quercus phellos</i>															0
<i>Ulmus americana</i>															0
Total for plot														5	

Table 23. Plot 7-2. 2005 Monitoring Data - Little Contentnea Creek Riparian Buffer Restoration - Phase 3 - Greene County, NC.

Species	Average Diameter (cm)	Average Height (cm)	Total Living	Total Dead	Diameter	Height	Diameter	Height	Diameter	Height	Diameter	Height	Diameter	Height	Diameter	Height
<i>Fraxinus americana</i>																
<i>Fraxinus pensylvanica</i>	0.95	164.63	4		0.4	171	1.1	213	1.1	213	1.2	61				
<i>Liriodendron tulipifera</i>																
<i>Platanus occidentalis</i>	6.10	548.63	4		7.2	579	5.5	549	3.8	457	7.9	610				
<i>Quercus nigra</i>	1.00	88.35	2		1.1	98	0.9	79								
<i>Quercus pagoda</i>																
<i>Quercus phellos</i>																
<i>Quercus rubra</i>																
<i>Quercus falcata</i>																
<i>Quercus michauxii</i>																
<i>Quercus lyrata</i>																
<i>Quercus alba</i>																
<i>Quercus spp.</i>																
<i>Taxodium distichum</i>																
<i>Betula nigra</i>																

Total/Average

10

Table 23. Plot 7-2. 2005 Monitoring Data - Little Contentnea Creek Riparian Buffer Restoration - Phase 3 - Greene County, NC.

Natural Woody stems	SEEDLING HT CLASS			SAPLINGS DBH		TREES - DBH								TOTAL	
	10-50cm	50-100cm	100-137cm	0-1 cm	1-2.5 cm	2.5	5	10	15	20	25	30	35		40
<i>Acer rubrum</i>	8	200	8	14	2										232
<i>Baccharis halimifolia</i>															0
<i>Carya spp</i>															0
<i>Celtis spp.</i>	1			3											4
<i>Crataegus spp</i>															0
<i>Diospyrus virginiana</i>															0
<i>Liquidambar styraciflua</i>		3	3			3	6								15
<i>Morella cerifera</i>															0
<i>Pinus spp.</i>															0
<i>Platanus occidentalis</i>															0
<i>Quercus nigra</i>															0
<i>Quercus phellos</i>				1											1
<i>Ulmus americana</i>															0

Total for plot 252

Table 24. Plot 7-3. 2005 Monitoring Data - Little Contentnea Creek Riparian Buffer Restoration - Phase 3 - Greene County, NC.

Species	Average Diameter (cm)	Average Height (cm)	Total Living	Total Dead	Diameter	Height	Diameter	Height	Diameter	Height	Diameter	Height	Diameter	Height	Diameter	Height
<i>Fraxinus americana</i>																
<i>Fraxinus pensylvanica</i>	2.40	271.30	1		2	271										
<i>Liriodendron tulipifera</i>																
<i>Platanus occidentalis</i>	0.76	137.12	6		1	159		95	1	124	1	172	1	162	1	110
<i>Quercus nigra</i>																
<i>Quercus pagoda</i>																
<i>Quercus phellos</i>																
<i>Quercus rubra</i>																
<i>Quercus falcata</i>																
<i>Quercus michauxii</i>																
<i>Quercus lyrata</i>	1.90	174.35	2		2	274	2	74								
<i>Quercus alba</i>																
<i>Quercus spp.</i>																
<i>Taxodium distichum</i>	0.90	53.60	1		1	54										
<i>Betula nigra</i>																

Total/Average

10

Table 24. Plot 7-3. 2005 Monitoring Data - Little Contentnea Creek Riparian Buffer Restoration - Phase 3 - Greene County, NC.

Natural Woody stems	SEEDLING HT CLASS			SAPLINGS DBH			TREES - DBH							TOTAL	
	10-50cm	50-100cm	100-137cm	0-1 cm	1-2.5 cm	2.5	5	10	15	20	25	30	35		40
<i>Acer rubrum</i>															0
<i>Baccharis halimifolia</i>															0
<i>Carya spp</i>															0
<i>Celtis spp.</i>															0
<i>Crataegus spp</i>															0
<i>Diospyrus virginiana</i>															0
<i>Liquidambar styraciflua</i>	3														3
<i>Morella cerifera</i>															0
<i>Pinus spp.</i>															0
<i>Platanus occidentalis</i>															0
<i>Quercus nigra</i>															0
<i>Quercus phellos</i>															0
<i>Ulmus americana</i>															0

Total for plot 3

Table 25. Plot 8-1. 2005 Monitoring Data - Little Contentnea Creek Riparian Buffer Restoration - Phase 3 - Greene County, NC.

Species	Average Diameter (cm)	Average Height (cm)	Total Living	Total Dead	Diameter	Height	Diameter	Height	Diameter	Height	Diameter	Height	Diameter	Height	Diameter	Height	Diameter	Height
<i>Fraxinus americana</i>	5.40	548.60	1		5.4	549												
<i>Fraxinus pensylvanica</i>	0.95	123.45	2		0.8	171	1.1	76										
<i>Liriodendron tulipifera</i>	0.10	51.80	1		0.1	52												
<i>Platanus occidentalis</i>	2.98	416.96	10		3.6	427	4.2	396	2.3	396	3.5	442	2.6	360	3.1	351	1.7	290
<i>Quercus nigra</i>																		
<i>Quercus pagoda</i>																		
<i>Quercus phellos</i>																		
<i>Quercus rubra</i>																		
<i>Quercus falcata</i>																		
<i>Quercus michauxii</i>																		
<i>Quercus lyrata</i>																		
<i>Quercus alba</i>																		
<i>Quercus spp.</i>																		
<i>Taxodium distichum</i>	0.80	85.30	1	2	0.8	85	d	d	d	d								
<i>Betula nigra</i>																		

Total/Average

15

Table 25. Plot 8-1. 2005 Monitoring Data - Little Contentnea Creek Riparian Buffer Restoration - Phase 3 - Greene County, NC

Species	Diameter	Height	Diameter	Height	Diameter	Height	Diameter	Height	Diameter	Height	Diameter	Height	Diameter	Height
<i>Fraxinus americana</i>														
<i>Fraxinus pensylvanica</i>														
<i>Liriodendron tulipifera</i>														
<i>Platanus occidentalis</i>	0.9	222.4	2	351	3.6	579	5.3	579						
<i>Quercus nigra</i>														
<i>Quercus pagoda</i>														
<i>Quercus phellos</i>														
<i>Quercus rubra</i>														
<i>Quercus falcata</i>														
<i>Quercus michauxii</i>														
<i>Quercus lyrata</i>														
<i>Quercus alba</i>														
<i>Quercus spp.</i>														
<i>Taxodium distichum</i>														
<i>Betula nigra</i>														

Total/Average

Table 25. Plot 8-1. 2005 Monitoring Data - Little Contentnea Creek Riparian Buffer Restoration - Phase 3 - Greene County, NC.

Natural Woody stems	SEEDLING HT CLASS			SAPLINGS DBH		TREES - DBH								TOTAL	
	10-50cm	50-100cm	100-137cm	0-1 cm	1-2.5 cm	2.5	5	10	15	20	25	30	35		40
<i>Acer rubrum</i>															0
<i>Baccharis halimifolia</i>															0
<i>Carya spp</i>															0
<i>Celtis spp.</i>															0
<i>Crataegus spp</i>															0
<i>Diospyrus virginiana</i>															0
<i>Liquidambar styraciflua</i>				1		1									2
<i>Morella cerifera</i>															0
<i>Pinus spp.</i>															0
<i>Platanus occidentalis</i>															0
<i>Quercus nigra</i>															0
<i>Quercus phellos</i>						1									1
<i>Ulmus americana</i>															0

Total for plot 3

Table 26. Plot 8-2. 2005 Monitoring Data - Little Contentnea Creek Riparian Buffer Restoration - Phase 3 - Greene County, NC.

Species	Average Diameter (cm)	Average Height (cm)	Total Living	Total Dead	Diameter	Height	Diameter	Height	Diameter	Height	Diameter	Height	Diameter	Height	Diameter	Height	Diameter	Height
<i>Fraxinus americana</i>																		
<i>Fraxinus pensylvanica</i>																		
<i>Liriodendron tulipifera</i>																		
<i>Platanus occidentalis</i>	3.40	408.40	1		3.4	408												
<i>Quercus nigra</i>																		
<i>Quercus pagoda</i>																		
<i>Quercus phellos</i>																		
<i>Quercus rubra</i>																		
<i>Quercus falcata</i>	0.85	93.50	4		1.4	133	0.8	127	0.8	75	0.4	40						
<i>Quercus michauxii</i>	1.51	197.34	7		0.4	147	0.3	132	1.4	108	2	290	1.8	293	1.7	271	3	142
<i>Quercus lyrata</i>																		
<i>Quercus alba</i>																		
<i>Quercus spp.</i>																		
<i>Taxodium distichum</i>																		
<i>Betula nigra</i>																		

Total/Average

12

Table 26. Plot 8-2. 2005 Monitoring Data - Little Contentnea Creek Riparian Buffer Restoration - Phase 3 - Greene County, NC.

Natural Woody stems	SEEDLING HT CLASS			SAPLINGS DBH			TREES - DBH								TOTAL
	10-50cm	50-100cm	100-137cm	0-1 cm	1-2.5 cm	2.5	5	10	15	20	25	30	35	40	
<i>Acer rubrum</i>			2												2
<i>Baccharis halimifolia</i>															0
<i>Carya spp</i>															0
<i>Celtis spp.</i>															0
<i>Crataegus spp</i>															0
<i>Diospyrus virginiana</i>															0
<i>Liquidambar styraciflua</i>		1		1		1									3
<i>Morella cerifera</i>															0
<i>Pinus spp.</i>															0
<i>Platanus occidentalis</i>															0
<i>Quercus nigra</i>															0
<i>Quercus phellos</i>															0
<i>Ulmus americana</i>															0
Total for plot														5	

Table 27. Plot 8-3. 2005 Monitoring Data - Little Contentnea Creek Riparian Buffer Restoration - Phase 3 - Greene County, NC.

Species	Average Diameter (cm)	Average Height (cm)	Total Living	Total Dead	Diameter	Height	Diameter	Height	Diameter	Height	Diameter	Height	Diameter	Height	Diameter	Height
<i>Fraxinus americana</i>																
<i>Fraxinus pensylvanica</i>																
<i>Liriodendron tulipifera</i>																
<i>Platanus occidentalis</i>	2.51	316.67	9		2.2	341	1	223	1.3	229	5.5	488	4.8	427	2	259
<i>Quercus nigra</i>																
<i>Quercus pagoda</i>																
<i>Quercus phellos</i>																
<i>Quercus rubra</i>																
<i>Quercus falcata</i>																
<i>Quercus michauxii</i>	1.25	170.65	2		1	98	1.5	244								
<i>Quercus lyrata</i>																
<i>Quercus alba</i>																
<i>Quercus spp.</i>																
<i>Taxodium distichum</i>	1.20	103.60	2		1.3	98	1.1	110								
<i>Betula nigra</i>																

Total/Average

13

Table 27. Plot 8-3. 2005 Monitoring Data - Little Contentnea Creek Riparian Buffer Restoration - Phase 3 - Greene County, NC

Species	Diameter	Height	Diameter	Height	Diameter	Height	Diameter	Height	Diameter	Height	Diameter	Height	Diameter	Height	Diameter	Height
<i>Fraxinus americana</i>																
<i>Fraxinus pensylvanica</i>																
<i>Liriodendron tulipifera</i>																
<i>Platanus occidentalis</i>	0.9	229	1.9	290	3	366										
<i>Quercus nigra</i>																
<i>Quercus pagoda</i>																
<i>Quercus phellos</i>																
<i>Quercus rubra</i>																
<i>Quercus falcata</i>																
<i>Quercus michauxii</i>																
<i>Quercus lyrata</i>																
<i>Quercus alba</i>																
<i>Quercus spp.</i>																
<i>Taxodium distichum</i>																
<i>Betula nigra</i>																

Total/Average

Table 27. Plot 8-3. 2005 Monitoring Data - Little Contentnea Creek Riparian Buffer Restoration - Phase 3 - Greene County, NC.

Natural Woody stems	SEEDLING HT CLASS			SAPLINGS DBH		TREES - DBH								TOTAL	
	10-50cm	50-100cm	100-137cm	0-1 cm	1-2.5 cm	2.5	5	10	15	20	25	30	35		40
<i>Acer rubrum</i>	1														1
<i>Baccharis halimifolia</i>															0
<i>Carya spp</i>															0
<i>Celtis spp.</i>															0
<i>Crataegus spp</i>															0
<i>Diospyrus virginiana</i>															0
<i>Liquidambar styraciflua</i>						1	1								2
<i>Morella cerifera</i>															0
<i>Pinus spp.</i>															0
<i>Platanus occidentalis</i>															0
<i>Quercus nigra</i>															0
<i>Quercus phellos</i>															0
<i>Ulmus americana</i>															0
Total for plot														3	

Table 29. Plot 9-1. 2005 Monitoring Data - Little Contentnea Creek Riparian Buffer Restoration - Phase 3 - Greene County, NC.

Species	Average Diameter (cm)	Average Height (cm)	Total Living	Total Dead	Diameter	Height	Diameter	Height	Diameter	Height	Diameter	Height	Diameter	Height	Diameter	Height
<i>Fraxinus americana</i>																
<i>Fraxinus pensylvanica</i>	3.18	312.98	6		2.1	302	4.5	336	1.9	220	2.1	247	3	317	5.5	457
<i>Liriodendron tulipifera</i>																
<i>Platanus occidentalis</i>																
<i>Quercus nigra</i>																
<i>Quercus pagoda</i>																
<i>Quercus phellos</i>																
<i>Quercus rubra</i>																
<i>Quercus falcata</i>																
<i>Quercus michauxii</i>																
<i>Quercus lyrata</i>																
<i>Quercus alba</i>																
<i>Quercus spp.</i>																
<i>Taxodium distichum</i>	1.30	145.10	2		0.4	147	2.2	143								
<i>Betula nigra</i>																

Total/Average

8

Table 29. Plot 9-1. 2005 Monitoring Data - Little Contentnea Creek Riparian Buffer Restoration - Phase 3 - Greene County, NC.

Natural Woody stems	SEEDLING HT CLASS			SAPLINGS DBH			TREES - DBH								TOTAL
	10-50cm	50-100cm	100-137cm	0-1 cm	1-2.5 cm	2.5	5	10	15	20	25	30	35	40	
<i>Acer rubrum</i>															0
<i>Baccharis halimifolia</i>															0
<i>Carya spp</i>															0
<i>Celtis spp.</i>															0
<i>Crataegus spp</i>															0
<i>Diospyrus virginiana</i>															0
<i>Liquidambar styraciflua</i>	1	1													2
<i>Morella cerifera</i>															0
<i>Pinus spp.</i>															0
<i>Platanus occidentalis</i>		1													1
<i>Quercus nigra</i>															0
<i>Quercus phellos</i>															0
<i>Ulmus americana</i>															0

Total for plot 3

Table 30. Plot 9-2. 2005 Monitoring Data - Little Contentnea Creek Riparian Buffer Restoration - Phase 3 - Greene County, NC.

Species	Average Diameter (cm)	Average Height (cm)	Total Living	Total Dead	Diameter	Height	Diameter	Height	Diameter	Height	Diameter	Height	Diameter	Height	Diameter	Height
<i>Fraxinus americana</i>																
<i>Fraxinus pensylvanica</i>	1.33	171.45	4		1.7	110	0.4	43	1.3	229	1.9	305				
<i>Liriodendron tulipifera</i>																
<i>Platanus occidentalis</i>																
<i>Quercus nigra</i>																
<i>Quercus pagoda</i>																
<i>Quercus phellos</i>	1.20	169.15	2		1.6	235	0.8	104								
<i>Quercus rubra</i>																
<i>Quercus falcata</i>																
<i>Quercus michauxii</i>																
<i>Quercus lyrata</i>																
<i>Quercus alba</i>																
<i>Quercus spp.</i>																
<i>Taxodium distichum</i>	1.00	120.90	3	1	1	204	1.1	88	0.9	70	d	d				
<i>Betula nigra</i>																

Total/Average

Table 30. Plot 9-2. 2005 Monitoring Data - Little Contentnea Creek Riparian Buffer Restoration - Phase 3 - Greene County, NC.

Natural Woody stems	SEEDLING HT CLASS			SAPLINGS DBH			TREES - DBH							TOTAL	
	10-50cm	50-100cm	100-137cm	0-1 cm	1-2.5 cm	2.5	5	10	15	20	25	30	35		40
<i>Acer rubrum</i>		1													1
<i>Baccharis halimifolia</i>															0
<i>Carya spp</i>															0
<i>Celtis spp.</i>		1													1
<i>Crataegus spp</i>															0
<i>Diospyrus virginiana</i>															0
<i>Liquidambar styraciflua</i>	5	6		4	2	3									20
<i>Morella cerifera</i>															0
<i>Pinus spp.</i>															0
<i>Platanus occidentalis</i>															0
<i>Quercus nigra</i>															0
<i>Quercus phellos</i>															0
<i>Ulmus americana</i>															0

Total for plot 22

Table 31. Plot 9-3. 2005 Monitoring Data - Little Contentnea Creek Riparian Buffer Restoration - Phase 3 - Greene County, NC.

Species	Average Diameter (cm)	Average Height (cm)	Total Living	Total Dead	Diameter	Height	Diameter	Height	Diameter	Height	Diameter	Height	Diameter	Height	Diameter	Height
<i>Fraxinus americana</i>																
<i>Fraxinus pensylvanica</i>	2.10	258.00	4		2.3	252	1.4	232	2.2	121	2.5	427				
<i>Liriodendron tulipifera</i>																
<i>Platanus occidentalis</i>																
<i>Quercus nigra</i>																
<i>Quercus pagoda</i>																
<i>Quercus phellos</i>	1.60	228.60	1		1.6	229										
<i>Quercus rubra</i>																
<i>Quercus falcata</i>																
<i>Quercus michauxii</i>																
<i>Quercus lyrata</i>																
<i>Quercus alba</i>																
<i>Quercus spp.</i>																
<i>Taxodium distichum</i>	1.60	164.40	3		3.2	137	0.4	165	1.2	191						
<i>Betula nigra</i>																

Total/Average

8

Table 31. Plot 9-3. 2005 Monitoring Data - Little Contentnea Creek Riparian Buffer Restoration - Phase 3 - Greene County, NC.

Natural Woody stems	SEEDLING HT CLASS			SAPLINGS DBH		TREES - DBH								TOTAL	
	10-50cm	50-100cm	100-137cm	0-1 cm	1-2.5 cm	2.5	5	10	15	20	25	30	35		40
<i>Acer rubrum</i>															0
<i>Baccharis halimifolia</i>															0
<i>Carya spp</i>															0
<i>Celtis spp.</i>															0
<i>Crataegus spp</i>															0
<i>Diospyrus virginiana</i>															0
<i>Liquidambar styraciflua</i>			2												2
<i>Morella cerifera</i>															0
<i>Pinus spp.</i>															0
<i>Platanus occidentalis</i>															0
<i>Quercus nigra</i>															0
<i>Quercus phellos</i>															0
<i>Ulmus americana</i>															0
Total for plot														2	

Table 33. Plot 10-1. 2005 Monitoring Data - Little Contentnea Creek Riparian Buffer Restoration - Phase 3 - Greene County, NC.

Species	Average Diameter (cm)	Average Height (cm)	Total Living	Total Dead	Diameter	Height	Diameter	Height	Diameter	Height	Diameter	Height	Diameter	Height	Diameter	Height	Diameter	Height
<i>Fraxinus americana</i>																		
<i>Fraxinus pensylvanica</i>	1.38	193.18	4		1.27	204	1.7	201	1.4	172	1.2	195						
<i>Liriodendron tulipifera</i>																		
<i>Platanus occidentalis</i>	1.10	106.70	1		1.1	107												
<i>Quercus nigra</i>																		
<i>Quercus pagoda</i>																		
<i>Quercus phellos</i>	1.55	131.43	7		0.75	170	0.9	70	1	213	1.5	122	1.2	82	2.8	113	2.7	149
<i>Quercus rubra</i>																		
<i>Quercus falcata</i>																		
<i>Quercus michauxii</i>																		
<i>Quercus lyrata</i>																		
<i>Quercus alba</i>																		
<i>Quercus spp.</i>																		
<i>Taxodium distichum</i>																		
<i>Betula nigra</i>																		

Total/Average

12

Table 33. Plot 10-1. 2005 Monitoring Data - Little Contentnea Creek Riparian Buffer Restoration - Phase 3 - Greene County, NC.

Natural Woody stems	SEEDLING HT CLASS			SAPLINGS DBH		TREES - DBH								TOTAL	
	10-50cm	50-100cm	100-137cm	0-1 cm	1-2.5 cm	2.5	5	10	15	20	25	30	35		40
<i>Acer rubrum</i>															0
<i>Baccharis halimifolia</i>															0
<i>Carya spp</i>															0
<i>Celtis spp.</i>															0
<i>Crataegus spp</i>															0
<i>Diospyrus virginiana</i>															0
<i>Liquidambar styraciflua</i>	1														1
<i>Morella cerifera</i>															0
<i>Pinus spp.</i>	4	7	16	1											28
<i>Platanus occidentalis</i>															0
<i>Quercus nigra</i>															0
<i>Quercus phellos</i>															0
<i>Ulmus americana</i>															0

Total for plot 29

Table 34. Plot 10-2. 2005 Monitoring Data - Little Contentnea Creek Riparian Buffer Restoration - Phase 3 - Greene County, NC.

Species	Average Diameter (cm)	Average Height (cm)	Total Living	Total Dead	Diameter	Height	Diameter	Height	Diameter	Height	Diameter	Height	Diameter	Height	Diameter	Height
<i>Fraxinus americana</i>																
<i>Fraxinus pensylvanica</i>	1.13	72.33	4		2.2	134	1.1	58	0.9	64	0.3	34				
<i>Liriodendron tulipifera</i>	0.70	53.30	1		0.7	53										
<i>Platanus occidentalis</i>	0.85	156.85	2		0.7	175	1	138								
<i>Quercus nigra</i>																
<i>Quercus pagoda</i>																
<i>Quercus phellos</i>	0.77	124.73	3		0.7	66	0.9	204	0.7	104						
<i>Quercus rubra</i>																
<i>Quercus falcata</i>																
<i>Quercus michauxii</i>																
<i>Quercus lyrata</i>																
<i>Quercus alba</i>																
<i>Quercus spp.</i>																
<i>Taxodium distichum</i>																
<i>Betula nigra</i>																

Total/Average

10

Table 34. Plot 10-2. 2005 Monitoring Data - Little Contentnea Creek Riparian Buffer Restoration - Phase 3 - Greene County, NC.

Natural Woody stems	SEEDLING HT CLASS			SAPLINGS DBH			TREES - DBH							TOTAL	
	10-50cm	50-100cm	100-137cm	0-1 cm	1-2.5 cm	2.5	5	10	15	20	25	30	35		40
<i>Acer rubrum</i>															0
<i>Baccharis halimifolia</i>				2											2
<i>Carya spp</i>															0
<i>Celtis spp.</i>															0
<i>Crataegus spp</i>															0
<i>Diospyrus virginiana</i>															0
<i>Liquidambar styraciflua</i>															0
<i>Morella cerifera</i>															0
<i>Pinus spp.</i>															0
<i>Platanus occidentalis</i>															0
<i>Quercus nigra</i>															0
<i>Quercus phellos</i>															0
<i>Ulmus americana</i>															0
Total for plot														2	

Table 35. Plot 10-3. 2005 Monitoring Data - Little Contentnea Creek Riparian Buffer Restoration - Phase 3 - Greene County, NC.

Species	Average Diameter (cm)	Average Height (cm)	Total Living	Total Dead	Diameter	Height	Diameter	Height	Diameter	Height	Diameter	Height	Diameter	Height	Diameter	Height
<i>Fraxinus americana</i>																
<i>Fraxinus pensylvanica</i>																
<i>Liriodendron tulipifera</i>																
<i>Platanus occidentalis</i>	3.15	381.03	6		0.9	192	1.2	140	0.9	220	1.9	333	7	701	7	701
<i>Quercus nigra</i>																
<i>Quercus pagoda</i>																
<i>Quercus phellos</i>																
<i>Quercus rubra</i>																
<i>Quercus falcata</i>																
<i>Quercus michauxii</i>	0.60	155.40	1		0.6	155										
<i>Quercus lyrata</i>																
<i>Quercus alba</i>																
<i>Quercus spp.</i>																
<i>Taxodium distichum</i>																
<i>Betula nigra</i>																

Total/Average

7

Table 35. Plot 10-3. 2005 Monitoring Data - Little Contentnea Creek Riparian Buffer Restoration - Phase 3 - Greene County, NC.

Natural Woody stems	SEEDLING HT CLASS			SAPLINGS DBH		TREES - DBH								TOTAL	
	10-50cm	50-100cm	100-137cm	0-1 cm	1-2.5 cm	2.5	5	10	15	20	25	30	35		40
<i>Acer rubrum</i>															0
<i>Baccharis halimifolia</i>			1		1										2
<i>Carya spp</i>															0
<i>Celtis spp.</i>															0
<i>Crataegus spp</i>															0
<i>Diospyrus virginiana</i>															0
<i>Liquidambar styraciflua</i>															0
<i>Morella cerifera</i>															0
<i>Pinus spp.</i>															0
<i>Platanus occidentalis</i>															0
<i>Quercus nigra</i>															0
<i>Quercus phellos</i>															0
<i>Ulmus americana</i>															0

Total for plot 2

Table 32. Plot 10-4. 2005 Monitoring Data - Little Contentnea Creek Riparian Buffer Restoration - Phase 3 - Greene County, NC.

Species	Average Diameter (cm)	Average Height (cm)	Total Living	Total Dead	Diameter	Height	Diameter	Height	Diameter	Height	Diameter	Height	Diameter	Height	Diameter	Height
<i>Fraxinus americana</i>																
<i>Fraxinus pennsylvanica</i>	0.89	83.50	5		0.82	73	0.9	82	0.9	91	0.9	85	1	85		
<i>Liriodendron tulipifera</i>	0.11	24.40	1		0.11	24										
<i>Platanus occidentalis</i>	1.80	152.40	5		1.9	143	1.7	146	1.6	128	1.7	162	2.1	183		
<i>Quercus nigra</i>																
<i>Quercus pagoda</i>																
<i>Quercus phellos</i>																
<i>Quercus rubra</i>																
<i>Quercus falcata</i>																
<i>Quercus michauxii</i>																
<i>Quercus lyrata</i>	0.50	9.10	1		0.5	9.1										
<i>Quercus alba</i>																
<i>Quercus spp.</i>																
<i>Taxodium distichum</i>																
<i>Betula nigra</i>																

Total/Average

12

Table 32. Plot 10-4. 2005 Monitoring Data - Little Contentnea Creek Riparian Buffer Restoration - Phase 3 - Greene County, NC.

Natural Woody stems	SEEDLING HT CLASS			SAPLINGS DBH			TREES - DBH								TOTAL
	10-50cm	50-100cm	100-137cm	0-1 cm	1-2.5 cm	2.5	5	10	15	20	25	30	35	40	
<i>Acer rubrum</i>															0
<i>Baccharis halimifolia</i>					1										1
<i>Carya spp</i>															0
<i>Celtis spp.</i>															0
<i>Crataegus spp</i>															0
<i>Diospyrus virginiana</i>															0
<i>Liquidambar styraciflua</i>	1														1
<i>Morella cerifera</i>															0
<i>Pinus spp.</i>		3													3
<i>Platanus occidentalis</i>															0
<i>Quercus nigra</i>															0
<i>Quercus phellos</i>															0
<i>Ulmus americana</i>															0

Total for plot 5

Table 36. Plot 11-1. 2005 Monitoring Data - Little Contentnea Creek Riparian Buffer Restoration - Phase 3 - Greene County, NC.

Species	Average Diameter (cm)	Average Height (cm)	Total Living	Total Dead	Diameter	Height	Diameter	Height	Diameter	Height	Diameter	Height	Diameter	Height	Diameter	Height	Diameter	Height
<i>Fraxinus americana</i>																		
<i>Fraxinus pensylvanica</i>	1.57	167.86	7		0.5	128	2.2	223	1.6	238	2.7	284	0.6	134	2	70	1.4	99
<i>Liriodendron tulipifera</i>																		
<i>Platanus occidentalis</i>																		
<i>Quercus nigra</i>																		
<i>Quercus pagoda</i>																		
<i>Quercus phellos</i>																		
<i>Quercus rubra</i>																		
<i>Quercus falcata</i>	1.00	66.80	2		0.7	45	1.3	88										
<i>Quercus michauxii</i>	1.08	131.10	2		0.85	189	1.3	73										
<i>Quercus lyrata</i>																		
<i>Quercus alba</i>																		
<i>Quercus spp.</i>																		
<i>Taxodium distichum</i>																		
<i>Betula nigra</i>																		

Total/Average

11

Table 36. Plot 11-1. 2005 Monitoring Data - Little Contentnea Creek Riparian Buffer Restoration - Phase 3 - Greene County, NC.

Natural Woody stems	SEEDLING HT CLASS			SAPLINGS DBH		TREES - DBH								TOTAL	
	10-50cm	50-100cm	100-137cm	0-1 cm	1-2.5 cm	2.5	5	10	15	20	25	30	35		40
<i>Acer rubrum</i>															0
<i>Baccharis halimifolia</i>				2											2
<i>Carya spp</i>															0
<i>Celtis spp.</i>															0
<i>Crataegus spp</i>															0
<i>Diospyrus virginiana</i>															0
<i>Liquidambar styraciflua</i>	6	11													17
<i>Morella cerifera</i>															0
<i>Pinus spp.</i>		7	12	5	3										27
<i>Platanus occidentalis</i>															0
<i>Quercus nigra</i>		1													1
<i>Quercus phellos</i>															0
<i>Ulmus americana</i>															0

Total for plot 47

Table 37. Plot 11-2. 2005 Monitoring Data - Little Contentnea Creek Riparian Buffer Restoration - Phase 3 - Greene County, NC.

Species	Average Diameter (cm)	Average Height (cm)	Total Living	Total Dead	Diameter	Height	Diameter	Height	Diameter	Height	Diameter	Height	Diameter	Height	Diameter	Height
<i>Fraxinus americana</i>																
<i>Fraxinus pensylvanica</i>	0.90	80.30	1		0.9	80										
<i>Liriodendron tulipifera</i>																
<i>Platanus occidentalis</i>	7.63	528.30	3		7.9	549	9	579	6	457						
<i>Quercus nigra</i>																
<i>Quercus pagoda</i>																
<i>Quercus phellos</i>	1.05	195.05	2		1.1	192	1	198								
<i>Quercus rubra</i>																
<i>Quercus falcata</i>																
<i>Quercus michauxii</i>	1.67	238.77	3		2.5	250	1.3	220	1.2	247						
<i>Quercus lyrata</i>	1.30	210.30	1		1.3	210										
<i>Quercus alba</i>																
<i>Quercus spp.</i>																
<i>Taxodium distichum</i>																
<i>Betula nigra</i>	4.70	518.17	3		5.6	488	5.3	610	3.2	457						

Total/Average

13

Table 37. Plot 11-2. 2005 Monitoring Data - Little Contentnea Creek Riparian Buffer Restoration - Phase 3 - Greene County, NC.

Natural Woody stems	SEEDLING HT CLASS			SAPLINGS DBH		TREES - DBH								TOTAL	
	10-50cm	50-100cm	100-137cm	0-1 cm	1-2.5 cm	2.5	5	10	15	20	25	30	35		40
<i>Acer rubrum</i>															0
<i>Baccharis halimifolia</i>															0
<i>Carya spp</i>															0
<i>Celtis spp.</i>															0
<i>Crataegus spp</i>															0
<i>Diospyrus virginiana</i>															0
<i>Liquidambar styraciflua</i>	20			5	2										27
<i>Morella cerifera</i>															0
<i>Pinus spp.</i>			7		1										8
<i>Platanus occidentalis</i>															0
<i>Quercus nigra</i>															0
<i>Quercus phellos</i>															0
<i>Ulmus americana</i>															0

Total for plot 35

Table 38. Plot 11-3. 2005 Monitoring Data - Little Contentnea Creek Riparian Buffer Restoration - Phase 3 - Greene County, NC.

Species	Average Diameter (cm)	Average Height (cm)	Total Living	Total Dead	Diameter	Height	Diameter	Height	Diameter	Height	Diameter	Height	Diameter	Height	Diameter	Height
<i>Fraxinus americana</i>																
<i>Fraxinus pensylvanica</i>																
<i>Liriodendron tulipifera</i>																
<i>Platanus occidentalis</i>																
<i>Quercus nigra</i>																
<i>Quercus pagoda</i>																
<i>Quercus phellos</i>																
<i>Quercus rubra</i>																
<i>Quercus falcata</i>																
<i>Quercus michauxii</i>	1.60	250.70	4		2.2	326	0.8	195	1.2	235	2.2	247				
<i>Quercus lyrata</i>	3.73	232.63	3		1.4	238	0.8	186	9	274						
<i>Quercus alba</i>																
<i>Quercus spp.</i>																
<i>Taxodium distichum</i>																
<i>Betula nigra</i>	3.95	441.95	2		4	412	3.9	472								

Total/Average

9

Table 38. Plot 11-3. 2005 Monitoring Data - Little Contentnea Creek Riparian Buffer Restoration - Phase 3 - Greene County, NC.

Natural Woody stems	SEEDLING HT CLASS			SAPLINGS DBH		TREES - DBH								TOTAL	
	10-50cm	50-100cm	100-137cm	0-1 cm	1-2.5 cm	2.5	5	10	15	20	25	30	35		40
<i>Acer rubrum</i>															0
<i>Baccharis halimifolia</i>															0
<i>Carya spp</i>															0
<i>Celtis spp.</i>															0
<i>Crataegus spp</i>															0
<i>Diospyrus virginiana</i>															0
<i>Liquidambar styraciflua</i>	50	20	5	100	45										220
<i>Morella cerifera</i>															0
<i>Pinus spp.</i>	30	25													55
<i>Platanus occidentalis</i>															0
<i>Quercus nigra</i>															0
<i>Quercus phellos</i>															0
<i>Ulmus americana</i>															0

Total for plot 275

Table 39. Plot 12-1. 2005 Monitoring Data - Little Contentnea Creek Riparian Buffer Restoration - Phase 3 - Greene County, NC.

Species	Average Diameter (cm)	Average Height (cm)	Total Living	Total Dead	Diameter	Height	Diameter	Height	Diameter	Height	Diameter	Height	Diameter	Height	Diameter	Height
<i>Fraxinus americana</i>																
<i>Fraxinus pensylvanica</i>	1.10	131.10	2		0.4	49	1.8	213								
<i>Liriodendron tulipifera</i>																
<i>Platanus occidentalis</i>	1.95	274.35	2		2.1	290	1.8	259								
<i>Quercus nigra</i>																
<i>Quercus pagoda</i>																
<i>Quercus phellos</i>																
<i>Quercus rubra</i>																
<i>Quercus falcata</i>																
<i>Quercus michauxii</i>																
<i>Quercus lyrata</i>																
<i>Quercus alba</i>																
<i>Quercus spp.</i>																
<i>Taxodium distichum</i>	0.76	148.14	5		0.9	183	1.1	201	0.6	171	0.5	152	0.7	34		
<i>Betula nigra</i>	0.35	175.25	2		0.5	198	0.2	152								

Total/Average

11

Table 39. Plot 12-1. 2005 Monitoring Data - Little Contentnea Creek Riparian Buffer Restoration - Phase 3 - Greene County, NC.

Natural Woody stems	SEEDLING HT CLASS			SAPLINGS DBH		TREES - DBH								TOTAL	
	10-50cm	50-100cm	100-137cm	0-1 cm	1-2.5 cm	2.5	5	10	15	20	25	30	35		40
<i>Acer rubrum</i>															0
<i>Baccharis halimifolia</i>															0
<i>Carya spp</i>															0
<i>Celtis spp.</i>															0
<i>Crataegus spp</i>															0
<i>Diospyrus virginiana</i>															0
<i>Liquidambar styraciflua</i>															0
<i>Morella cerifera</i>															0
<i>Pinus spp.</i>															0
<i>Platanus occidentalis</i>															0
<i>Quercus nigra</i>															0
<i>Quercus phellos</i>															0
<i>Ulmus americana</i>															0
Total for plot														0	

Table 40. Plot 12-2. 2005 Monitoring Data - Little Contentnea Creek Riparian Buffer Restoration - Phase 3 - Greene County, NC.
no live

Species	Average Diameter (cm)	Average Height (cm)	Total Living	Total Dead	Diameter	Height	Diameter	Height	Diameter	Height	Diameter	Height	Diameter	Height	Diameter	Height
<i>Fraxinus americana</i>																
<i>Fraxinus pennsylvanica</i>	0.80	120.70	1		0.8	121										
<i>Liriodendron tulipifera</i>	0.60	39.60	1		0.6	40										
<i>Platanus occidentalis</i>	3.27	367.80	3		0.8	204	5	457	4	442						
<i>Quercus nigra</i>																
<i>Quercus pagoda</i>																
<i>Quercus phellos</i>																
<i>Quercus rubra</i>																
<i>Quercus falcata</i>																
<i>Quercus michauxii</i>																
<i>Quercus lyrata</i>																
<i>Quercus alba</i>																
<i>Quercus spp.</i>																
<i>Taxodium distichum</i>	1.27	173.44	10		4.6	134	0.7	168	0.5	152	1	213	0.7	119	0.6	152
<i>Betula nigra</i>	2.10	350.50	1		2.1	351										

Total/Average

16

Table 40. Plot 12-2. 2005 Monitoring Data - Little Contentnea Creek Riparian Buffer Restoration - Phase 3 - Greene County, NC.

Species	Diameter	Height	Diameter	Height	Diameter	Height	Diameter	Height	Diameter	Height	Diameter	Height	Diameter	Height	Diameter	Height
<i>Fraxinus americana</i>																
<i>Fraxinus pennsylvanica</i>																
<i>Liriodendron tulipifera</i>																
<i>Platanus occidentalis</i>																
<i>Quercus nigra</i>																
<i>Quercus pagoda</i>																
<i>Quercus phellos</i>																
<i>Quercus rubra</i>																
<i>Quercus falcata</i>																
<i>Quercus michauxii</i>																
<i>Quercus lyrata</i>																
<i>Quercus alba</i>																
<i>Quercus spp.</i>																
<i>Taxodium distichum</i>	0.9	189	1.3	220	2.1	241	0.3	146								
<i>Betula nigra</i>																

Total/Average

Table 40. Plot 12-2. 2005 Monitoring Data - Little Contentnea Creek Riparian Buffer Restoration - Phase 3 - Greene County, NC.

Natural Woody stems	SEEDLING HT CLASS			SAPLINGS DBH		TREES - DBH								TOTAL	
	10-50cm	50-100cm	100-137cm	0-1 cm	1-2.5 cm	2.5	5	10	15	20	25	30	35		40
<i>Acer rubrum</i>															0
<i>Baccharis halimifolia</i>			1	1	3										0
<i>Carya spp</i>															0
<i>Celtis spp.</i>															0
<i>Crataegus spp</i>															0
<i>Diospyrus virginiana</i>															0
<i>Liquidambar styraciflua</i>	2														2
<i>Morella cerifera</i>															0
<i>Pinus spp.</i>	2	9	3		1										15
<i>Platanus occidentalis</i>															0
<i>Quercus nigra</i>															0
<i>Quercus phellos</i>															0
<i>Ulmus americana</i>															0
Total for plot														17	

Table 41. Plot 12-3. 2005 Monitoring Data - Little Contentnea Creek Riparian Buffer Restoration - Phase 3 - Greene County, NC.

Species	Average Diameter (cm)	Average Height (cm)	Total Living	Total Dead	Diameter	Height	Diameter	Height	Diameter	Height	Diameter	Height	Diameter	Height	Diameter	Height
<i>Fraxinus americana</i>																
<i>Fraxinus pensylvanica</i>	0.90	213.40	1		0.9	213										
<i>Liriodendron tulipifera</i>																
<i>Platanus occidentalis</i>																
<i>Quercus nigra</i>																
<i>Quercus pagoda</i>																
<i>Quercus phellos</i>																
<i>Quercus rubra</i>																
<i>Quercus falcata</i>																
<i>Quercus michauxii</i>																
<i>Quercus lyrata</i>																
<i>Quercus alba</i>																
<i>Quercus spp.</i>																
<i>Taxodium distichum</i>																
<i>Betula nigra</i>	6.47	487.70	3		6.6	488	5.6	457	7.2	518						

Total/Average

4

Table 41. Plot 12-3. 2005 Monitoring Data - Little Contentnea Creek Riparian Buffer Restoration - Phase 3 - Greene County, NC.

Natural Woody stems	SEEDLING HT CLASS			SAPLINGS DBH		TREES - DBH								TOTAL	
	10-50cm	50-100cm	100-137cm	0-1 cm	1-2.5 cm	2.5	5	10	15	20	25	30	35		40
<i>Acer rubrum</i>															0
<i>Baccharis halimifolia</i>															0
<i>Carya spp</i>															0
<i>Celtis spp.</i>															0
<i>Crataegus spp</i>															0
<i>Diospyrus virginiana</i>															0
<i>Liquidambar styraciflua</i>	7	10													17
<i>Morella cerifera</i>															0
<i>Pinus spp.</i>			4												4
<i>Platanus occidentalis</i>			1												1
<i>Quercus nigra</i>															0
<i>Quercus phellos</i>															0
<i>Ulmus americana</i>															0

Total for plot 22

Table 42. Plot 13-1. 2005 Monitoring Data - Little Contentnea Creek Riparian Buffer Restoration - Phase 3 - Greene County, NC.

Species	Average Diameter (cm)	Average Height (cm)	Total Living	Total Dead	Diameter	Height	Diameter	Height	Diameter	Height	Diameter	Height	Diameter	Height	Diameter	Height
<i>Fraxinus americana</i>																
<i>Fraxinus pensylvanica</i>																
<i>Liriodendron tulipifera</i>																
<i>Platanus occidentalis</i>	0.96	150.00	11		0.6	48	1	104	0.6	168	1.6	134	0.8	183	0.5	149
<i>Quercus nigra</i>																
<i>Quercus pagoda</i>																
<i>Quercus phellos</i>																
<i>Quercus rubra</i>																
<i>Quercus falcata</i>	1.43	99.35	4		1	52	1.6	74	0.5	155	2.6	116				
<i>Quercus michauxii</i>																
<i>Quercus lyrata</i>	1.60	271.30	1		1.6	271										
<i>Quercus alba</i>	1.10	36.60	1		1.1	37										
<i>Quercus spp.</i>																
<i>Taxodium distichum</i>																
<i>Betula nigra</i>																

Total/Average

17

Table 42. Plot 13-1. 2005 Monitoring Data - Little Contentnea Creek Riparian Buffer Restoration - Phase 3 - Greene County, NC

Species	Diameter	Height	Diameter	Height	Diameter	Height	Diameter	Height	Diameter	Height	Diameter	Height	Diameter	Height	Diameter	Height
<i>Fraxinus americana</i>																
<i>Fraxinus pennsylvanica</i>																
<i>Liriodendron tulipifera</i>																
<i>Platanus occidentalis</i>	0.8	152	1.2	229	1.9	123	1	198	0.6	162						
<i>Quercus nigra</i>																
<i>Quercus pagoda</i>																
<i>Quercus phellos</i>																
<i>Quercus rubra</i>																
<i>Quercus falcata</i>																
<i>Quercus michauxii</i>																
<i>Quercus lyrata</i>																
<i>Quercus alba</i>																
<i>Quercus spp.</i>																
<i>Taxodium distichum</i>																
<i>Betula nigra</i>																

Total/Average

Table 42. Plot 13-1. 2005 Monitoring Data - Little Contentnea Creek Riparian Buffer Restoration - Phase 3 - Greene County, NC.

Natural Woody stems	SEEDLING HT CLASS			SAPLINGS DBH		TREES - DBH								TOTAL	
	10-50cm	50-100cm	100-137cm	0-1 cm	1-2.5 cm	2.5	5	10	15	20	25	30	35		40
<i>Acer rubrum</i>															0
<i>Baccharis halimifolia</i>															0
<i>Carya spp</i>															0
<i>Celtis spp.</i>															0
<i>Crataegus spp</i>															0
<i>Diospyrus virginiana</i>															0
<i>Liquidambar styraciflua</i>															0
<i>Morella cerifera</i>															0
<i>Pinus spp.</i>		1													1
<i>Platanus occidentalis</i>															0
<i>Quercus nigra</i>															0
<i>Quercus phellos</i>															0
<i>Ulmus americana</i>															0
Total for plot														1	

Table 43. Plot 13-2. 2005 Monitoring Data - Little Contentnea Creek Riparian Buffer Restoration - Phase 3 - Greene County, NC.

Species	Average Diameter (cm)	Average Height (cm)	Total Living	Total Dead	Diameter	Height	Diameter	Height	Diameter	Height	Diameter	Height	Diameter	Height	Diameter	Height
<i>Fraxinus americana</i>																
<i>Fraxinus pensylvanica</i>																
<i>Liriodendron tulipifera</i>																
<i>Platanus occidentalis</i>																
<i>Quercus nigra</i>																
<i>Quercus pagoda</i>																
<i>Quercus phellos</i>	0.75	140.20	2		0.6	177	0.9	104								
<i>Quercus rubra</i>	0.20	21.30	1		0.2	21										
<i>Quercus falcata</i>																
<i>Quercus michauxii</i>																
<i>Quercus lyrata</i>																
<i>Quercus alba</i>	1.30	112.80	1		1.3	113										
<i>Quercus spp.</i>																
<i>Taxodium distichum</i>																
<i>Betula nigra</i>	2.35	281.95	2		1.5	229	3.2	335								

Total/Average

6

Table 44. Plot 13-3. 2005 Monitoring Data - Little Contentnea Creek Riparian Buffer Restoration - Phase 3 - Greene County, NC.

	Average Diameter (cm)	Average Height (cm)	Total Living	Total Dead	Diameter	Height	Diameter	Height	Diameter	Height	Diameter	Height	Diameter	Height	Diameter	Height
<i>Fraxinus americana</i>																
<i>Fraxinus pensylvanica</i>																
<i>Liriodendron tulipifera</i>																
<i>Platanus occidentalis</i>																
<i>Quercus nigra</i>	0.75	94.50	2		0.5	152	1	37								
<i>Quercus pagoda</i>																
<i>Quercus phellos</i>	1.05	201.15	2		1	110	1.1	293								
<i>Quercus rubra</i>																
<i>Quercus falcata</i>																
<i>Quercus michauxii</i>	1.10	243.80	1		1.1	244										
<i>Quercus lyrata</i>	1.00	262.10	1		1	262										
<i>Quercus alba</i>	0.20	229.00	1		0.2	229										
<i>Quercus spp.</i>																
<i>Taxodium distichum</i>																
<i>Betula nigra</i>																

Total/Average

7

Table 44. Plot 13-3. 2005 Monitoring Data - Little Contentnea Creek Riparian Buffer Restoration - Phase 3 - Greene County, NC.

Natural Woody stems	SEEDLING HT CLASS			SAPLINGS DBH		TREES - DBH								TOTAL	
	10-50cm	50-100cm	100-137cm	0-1 cm	1-2.5 cm	2.5	5	10	15	20	25	30	35		40
<i>Acer rubrum</i>		1													1
<i>Baccharis halimifolia</i>				2	6										8
<i>Carya spp</i>															0
<i>Celtis spp.</i>															0
<i>Crataegus spp</i>															0
<i>Diospyrus virginiana</i>					2										2
<i>Liquidambar styraciflua</i>	2	1	1												4
<i>Morella cerifera</i>															0
<i>Pinus spp.</i>			1												1
<i>Platanus occidentalis</i>															0
<i>Quercus nigra</i>															0
<i>Quercus phellos</i>															0
<i>Ulmus americana</i>															0

Total for plot 16

Table 45. Plot 14-1. 2005 Monitoring Data - Little Contentnea Creek Riparian Buffer Restoration - Phase 3 - Greene County, NC.

Species	Average Diameter (cm)	Average Height (cm)	Total Living	Total Dead	Diameter	Height	Diameter	Height	Diameter	Height	Diameter	Height	Diameter	Height	Diameter	Height	Diameter	Height
<i>Fraxinus americana</i>																		
<i>Fraxinus pensylvanica</i>	6.90	53.35	2		7.6	70	6.2	37										
<i>Liriodendron tulipifera</i>																		
<i>Platanus occidentalis</i>	2.40	84.91	7		1.4	149	1.2	134	1.4	143	5.2	37	6.2	58	0.8	49	0.6	24
<i>Quercus nigra</i>																		
<i>Quercus pagoda</i>																		
<i>Quercus phellos</i>																		
<i>Quercus rubra</i>																		
<i>Quercus falcata</i>																		
<i>Quercus michauxii</i>																		
<i>Quercus lyrata</i>																		
<i>Quercus alba</i>																		
<i>Quercus spp.</i>																		
<i>Taxodium distichum</i>																		
<i>Betula nigra</i>																		

Total/Average

9

Table 45. Plot 14-1. 2005 Monitoring Data - Little Contentnea Creek Riparian Buffer Restoration - Phase 3 - Greene County, NC.

Natural Woody stems	SEEDLING HT CLASS			SAPLINGS DBH		TREES - DBH								TOTAL	
	10-50cm	50-100cm	100-137cm	0-1 cm	1-2.5 cm	2.5	5	10	15	20	25	30	35		40
<i>Acer rubrum</i>															0
<i>Baccharis halimifolia</i>															0
<i>Carya spp</i>															0
<i>Celtis spp.</i>															0
<i>Crataegus spp</i>															0
<i>Diospyrus virginiana</i>				4											4
<i>Liquidambar styraciflua</i>															0
<i>Morella cerifera</i>															0
<i>Pinus spp.</i>															0
<i>Platanus occidentalis</i>															0
<i>Quercus nigra</i>															0
<i>Quercus phellos</i>															0
<i>Ulmus americana</i>															0

Total for plot 4

Table 46. Plot 14-2. 2005 Monitoring Data - Little Contentnea Creek Riparian Buffer Restoration - Phase 3 - Greene County, NC.

Species	Average Diameter (cm)	Average Height (cm)	Total Living	Total Dead	Diameter	Height	Diameter	Height	Diameter	Height	Diameter	Height	Diameter	Height	Diameter	Height
<i>Fraxinus americana</i>																
<i>Fraxinus pensylvanica</i>	1.96	195.59	12		2.8	259	1.2	213	3	268	1	171	2.6	244	1.7	204
<i>Liriodendron tulipifera</i>	0.60	45.70	1		0.6	46										
<i>Platanus occidentalis</i>																
<i>Quercus nigra</i>																
<i>Quercus pagoda</i>																
<i>Quercus phellos</i>																
<i>Quercus rubra</i>																
<i>Quercus falcata</i>																
<i>Quercus michauxii</i>	0.40	39.60	1		0.4	40										
<i>Quercus lyrata</i>																
<i>Quercus alba</i>																
<i>Quercus spp.</i>																
<i>Taxodium distichum</i>																
<i>Betula nigra</i>																

Total/Average

14

Table 46. Plot 14-2. 2005 Monitoring Data - Little Contentnea Creek Riparian Buffer Restoration - Phase 3 - Greene County, NC

Species	Diameter	Height	Diameter	Height	Diameter	Height	Diameter	Height	Diameter	Height	Diameter	Height	Diameter	Height	Diameter	Height
<i>Fraxinus americana</i>																
<i>Fraxinus pensylvanica</i>	3	265	2	137	1.6	207	2	207	0.8	43	1.8	128				
<i>Liriodendron tulipifera</i>																
<i>Platanus occidentalis</i>																
<i>Quercus nigra</i>																
<i>Quercus pagoda</i>																
<i>Quercus phellos</i>																
<i>Quercus rubra</i>																
<i>Quercus falcata</i>																
<i>Quercus michauxii</i>																
<i>Quercus lyrata</i>																
<i>Quercus alba</i>																
<i>Quercus spp.</i>																
<i>Taxodium distichum</i>																
<i>Betula nigra</i>																

Total/Average

Table 46. Plot 14-2. 2005 Monitoring Data - Little Contentnea Creek Riparian Buffer Restoration - Phase 3 - Greene County, NC.

Natural Woody stems	SEEDLING HT CLASS			SAPLINGS DBH			TREES - DBH								TOTAL
	10-50cm	50-100cm	100-137cm	0-1 cm	1-2.5 cm	2.5	5	10	15	20	25	30	35	40	
<i>Acer rubrum</i>															0
<i>Baccharis halimifolia</i>															0
<i>Carya spp</i>															0
<i>Celtis spp.</i>															0
<i>Crataegus spp</i>															0
<i>Diospyrus virginiana</i>															0
<i>Liquidambar styraciflua</i>															0
<i>Morella cerifera</i>															0
<i>Pinus spp.</i>															0
<i>Platanus occidentalis</i>															0
<i>Quercus nigra</i>															0
<i>Quercus phellos</i>															0
<i>Ulmus americana</i>															0
Total for plot														0	

Table 47. Plot 14-3. 2005 Monitoring Data - Little Conetneta Creek Riparian Buffer Restoration - Phase 3 - Greene County, NC.

Species	Average Diameter (cm)	Average Height (cm)	Total Living	Total Dead	Diameter	Height	Diameter	Height	Diameter	Height	Diameter	Height	Diameter	Height	Diameter	Height
<i>Fraxinus americana</i>																
<i>Fraxinus pensylvanica</i>	1.13	213.23	4		2.8	302	0.8	177	0.6	201	0.3	173				
<i>Liriodendron tulipifera</i>	0.87	67.23	3		1	66	0.6	57	1	79						
<i>Platanus occidentalis</i>	0.65	103.30	2		1	79	0.3	128								
<i>Quercus nigra</i>																
<i>Quercus pagoda</i>																
<i>Quercus phellos</i>																
<i>Quercus rubra</i>																
<i>Quercus falcata</i>																
<i>Quercus michauxii</i>	0.47	152.63	3		0.6	137	0.5	190	0.3	132						
<i>Quercus lyrata</i>																
<i>Quercus alba</i>																
<i>Quercus spp.</i>																
<i>Taxodium distichum</i>	0.85	39.60	1		0.85	40										
<i>Betula nigra</i>																

Total/Average

13

Table 47. Plot 14-3. 2005 Monitoring Data - Little Conetnenta Creek Riparian Buffer Restoration - Phase 3 - Greene County, NC.

Natural Woody stems	SEEDLING HT CLASS			SAPLINGS DBH		TREES - DBH								TOTAL	
	10-50cm	50-100cm	100-137cm	0-1 cm	1-2.5 cm	2.5	5	10	15	20	25	30	35		40
<i>Acer rubrum</i>															0
<i>Baccharis halimifolia</i>															0
<i>Carya spp</i>															0
<i>Celtis spp.</i>															0
<i>Crataegus spp</i>															0
<i>Diospyrus virginiana</i>															0
<i>Liquidambar styraciflua</i>															0
<i>Morella cerifera</i>				2											2
<i>Pinus spp.</i>															0
<i>Platanus occidentalis</i>															0
<i>Quercus nigra</i>															0
<i>Quercus phellos</i>															0
<i>Ulmus americana</i>															0

Total for plot 2

Table 48. Plot 14-4. 2005 Monitoring Data - Little Contentnea Creek Riparian Buffer Restoration - Phase 3 - Greene County, NC.

Species	Average Diameter (cm)	Average Height (cm)	Total Living	Total Dead	Diameter	Height	Diameter	Height	Diameter	Height	Diameter	Height	Diameter	Height	Diameter	Height
<i>Fraxinus americana</i>	0.40	146.30	1		0.4	146										
<i>Fraxinus pensylvanica</i>	1.75	188.70	11		1.8	229	1.2	223	1.2	207	2.4	268	2.6	229	2.4	226
<i>Liriodendron tulipifera</i>																
<i>Platanus occidentalis</i>																
<i>Quercus nigra</i>																
<i>Quercus pagoda</i>																
<i>Quercus phellos</i>																
<i>Quercus rubra</i>																
<i>Quercus falcata</i>																
<i>Quercus michauxii</i>																
<i>Quercus lyrata</i>																
<i>Quercus alba</i>																
<i>Quercus spp.</i>																
<i>Taxodium distichum</i>																
<i>Betula nigra</i>																

Total/Average

11

Table 48. Plot 14-4. 2005 Monitoring Data - Little Contentnea Creek Riparian Buffer Restoration - Phase 3 - Greene County, NC

Species	Diameter	Height	Diameter	Height	Diameter	Height	Diameter	Height	Diameter	Height	Diameter	Height	Diameter	Height	Diameter	Height
<i>Fraxinus americana</i>																
<i>Fraxinus pensylvanica</i>	2.2	250	2	107	1.4	91	1.5	98	0.5	149						
<i>Liriodendron tulipifera</i>																
<i>Platanus occidentalis</i>																
<i>Quercus nigra</i>																
<i>Quercus pagoda</i>																
<i>Quercus phellos</i>																
<i>Quercus rubra</i>																
<i>Quercus falcata</i>																
<i>Quercus michauxii</i>																
<i>Quercus lyrata</i>																
<i>Quercus alba</i>																
<i>Quercus spp.</i>																
<i>Taxodium distichum</i>																
<i>Betula nigra</i>																

Total/Average

Table 48. Plot 14-4. 2005 Monitoring Data - Little Contentnea Creek Riparian Buffer Restoration - Phase 3 - Greene County, NC.

Natural Woody stems	SEEDLING HT CLASS			SAPLINGS DBH		TREES - DBH								TOTAL	
	10-50cm	50-100cm	100-137cm	0-1 cm	1-2.5 cm	2.5	5	10	15	20	25	30	35		40
<i>Acer rubrum</i>															0
<i>Baccharis halimifolia</i>															0
<i>Carya spp</i>															0
<i>Celtis spp.</i>															0
<i>Crataegus spp</i>															0
<i>Diospyrus virginiana</i>															0
<i>Liquidambar styraciflua</i>															0
<i>Morella cerifera</i>															0
<i>Pinus spp.</i>															0
<i>Platanus occidentalis</i>															0
<i>Quercus nigra</i>															0
<i>Quercus phellos</i>															0
<i>Ulmus americana</i>															0
Total for plot														0	

Table 49. Plot 15-1. 2005 Monitoring Data - Little Contentnea Creek Riparian Buffer Restoration - Phase 3 - Greene County, NC.

Species	Average Diameter (cm)	Average Height (cm)	Total Living	Total Dead	Diameter	Height	Diameter	Height	Diameter	Height	Diameter	Height	Diameter	Height	Diameter	Height	Diameter	Height	Diameter	Height
<i>Fraxinus americana</i>																				
<i>Fraxinus pensylvanica</i>	2.86	289.99	8		1.9	259	3.2	323	3.9	396	3.7	305	1.4	116	3.2	396	3.3	232	2.3	293
<i>Liriodendron tulipifera</i>																				
<i>Platanus occidentalis</i>																				
<i>Quercus nigra</i>																				
<i>Quercus pagoda</i>																				
<i>Quercus phellos</i>	2.20	243.80	1		2.2	244														
<i>Quercus rubra</i>																				
<i>Quercus falcata</i>																				
<i>Quercus michauxii</i>	0.80	195.10	1		0.8	195														
<i>Quercus lyrata</i>	2.00	252.95	2		1.1	85.3	2.7	274	2.2	232										
<i>Quercus alba</i>																				
<i>Quercus spp.</i>																				
<i>Taxodium distichum</i>																				
<i>Betula nigra</i>																				

Total/Average

12

Table 49. Plot 15-1. 2005 Monitoring Data - Little Contentnea Creek Riparian Buffer Restoration - Phase 3 - Greene County, NC.

Natural Woody stems	SEEDLING HT CLASS			SAPLINGS DBH		TREES - DBH								TOTAL	
	10-50cm	50-100cm	100-137cm	0-1 cm	1-2.5 cm	2.5	5	10	15	20	25	30	35		40
<i>Acer rubrum</i>		3		1											4
<i>Baccharis halimifolia</i>			1												1
<i>Carya spp</i>															0
<i>Celtis spp.</i>															0
<i>Crataegus spp</i>															0
<i>Diospyrus virginiana</i>															0
<i>Liquidambar styraciflua</i>															0
<i>Morella cerifera</i>															0
<i>Pinus spp.</i>															0
<i>Platanus occidentalis</i>															0
<i>Quercus nigra</i>															0
<i>Quercus phellos</i>															0
<i>Ulmus americana</i>															0
Total for plot														5	

Table 50. Plot 15-2. 2005 Monitoring Data - Little Contentnea Creek Riparian Buffer Restoration - Phase 3 - Greene County, NC.

Species	Average Diameter (cm)	Average Height (cm)	Total Living	Total Dead	Diameter	Height	Diameter	Height	Diameter	Height	Diameter	Height	Diameter	Height	Diameter	Height
<i>Fraxinus americana</i>																
<i>Fraxinus pensylvanica</i>																
<i>Liriodendron tulipifera</i>																
<i>Platanus occidentalis</i>	3.65	441.95	2		2.5	396	4.8	488								
<i>Quercus nigra</i>																
<i>Quercus pagoda</i>																
<i>Quercus phellos</i>																
<i>Quercus rubra</i>	0.25	126.50	2		0.3	24	0.2	229								
<i>Quercus falcata</i>	1.20	170.70	1		1.2	171										
<i>Quercus michauxii</i>																
<i>Quercus lyrata</i>																
<i>Quercus alba</i>																
<i>Quercus spp.</i>																
<i>Taxodium distichum</i>	0.50	92.95	2		0.8	162	0.2	24								
<i>Betula nigra</i>																

Total/Average

7

Table 50. Plot 15-2. 2005 Monitoring Data - Little Contentnea Creek Riparian Buffer Restoration - Phase 3 - Greene County, NC.

Natural Woody stems	SEEDLING HT CLASS			SAPLINGS DBH		TREES - DBH								TOTAL	
	10-50cm	50-100cm	100-137cm	0-1 cm	1-2.5 cm	2.5	5	10	15	20	25	30	35		40
<i>Acer rubrum</i>				1	1										2
<i>Baccharis halimifolia</i>															0
<i>Carya spp</i>															0
<i>Celtis spp.</i>															0
<i>Crataegus spp</i>															0
<i>Diospyrus virginiana</i>															0
<i>Liquidambar styraciflua</i>															0
<i>Morella cerifera</i>															0
<i>Pinus spp.</i>															0
<i>Platanus occidentalis</i>															0
<i>Quercus nigra</i>															0
<i>Quercus phellos</i>															0
<i>Ulmus americana</i>															0

Total for plot 2

Table 51. Plot 15-3. 2005 Monitoring Data - Little Contentnea Creek Riparian Buffer Restoration - Phase 3 - Greene County, NC.

Species	Average Diameter (cm)	Average Height (cm)	Total Living	Total Dead	Diameter	Height	Diameter	Height	Diameter	Height	Diameter	Height	Diameter	Height	Diameter	Height
<i>Fraxinus americana</i>																
<i>Fraxinus pensylvanica</i>	4.27	357.67	3		4.4	518	7.4	488	1	67						
<i>Liriodendron tulipifera</i>	3.40	342.90	2		4	381	2.8	305								
<i>Platanus occidentalis</i>																
<i>Quercus nigra</i>																
<i>Quercus pagoda</i>																
<i>Quercus phellos</i>	1.30	163.05	2		1.9	122	0.7	204								
<i>Quercus rubra</i>																
<i>Quercus falcata</i>																
<i>Quercus michauxii</i>	0.90	119.90	3		0.7	189	0.5	37	1.5	134						
<i>Quercus lyrata</i>																
<i>Quercus alba</i>																
<i>Quercus spp.</i>																
<i>Taxodium distichum</i>																
<i>Betula nigra</i>																

Total/Average

10

Table 51. Plot 15-3. 2005 Monitoring Data - Little Contentnea Creek Riparian Buffer Restoration - Phase 3 - Greene County, NC.

Natural Woody stems	SEEDLING HT CLASS			SAPLINGS DBH		TREES - DBH								TOTAL	
	10-50cm	50-100cm	100-137cm	0-1 cm	1-2.5 cm	2.5	5	10	15	20	25	30	35		40
<i>Acer rubrum</i>															0
<i>Baccharis halimifolia</i>															0
<i>Carya spp</i>															0
<i>Celtis spp.</i>															0
<i>Crataegus spp</i>															0
<i>Diospyrus virginiana</i>															0
<i>Liquidambar styraciflua</i>															0
<i>Morella cerifera</i>															0
<i>Pinus spp.</i>															0
<i>Platanus occidentalis</i>															0
<i>Quercus nigra</i>															0
<i>Quercus phellos</i>															0
<i>Ulmus americana</i>															0
Total for plot														0	

Table 52. Plot 15-4. 2005 Monitoring Data - Little Contentnea Creek Riparian Buffer Restoration - Phase 3 - Greene County, NC.

Species	Average Diameter (cm)	Average Height (cm)	Total Living	Total Dead	Diameter	Height	Diameter	Height	Diameter	Height	Diameter	Height	Diameter	Height	Diameter	Height
<i>Fraxinus americana</i>																
<i>Fraxinus pensylvanica</i>																
<i>Liriodendron tulipifera</i>																
<i>Platanus occidentalis</i>																
<i>Quercus nigra</i>																
<i>Quercus pagoda</i>																
<i>Quercus phellos</i>																
<i>Quercus rubra</i>																
<i>Quercus falcata</i>	0.75	48.75	2		0.7	52	0.8	46								
<i>Quercus michauxii</i>																
<i>Quercus lyrata</i>																
<i>Quercus alba</i>																
<i>Quercus spp.</i>																
<i>Taxodium distichum</i>	1.83	95.25	4		1.7	104	1.9	116	2	119	1.7	43				
<i>Betula nigra</i>																

Total/Average

6

Table 52. Plot 15-4. 2005 Monitoring Data - Little Contentnea Creek Riparian Buffer Restoration - Phase 3 - Greene County, NC.

Natural Woody stems	SEEDLING HT CLASS			SAPLINGS DBH		TREES - DBH								TOTAL	
	10-50cm	50-100cm	100-137cm	0-1 cm	1-2.5 cm	2.5	5	10	15	20	25	30	35		40
<i>Acer rubrum</i>			1												1
<i>Baccharis halimifolia</i>															0
<i>Carya spp</i>															0
<i>Celtis spp.</i>															0
<i>Crataegus spp</i>															0
<i>Diospyrus virginiana</i>															0
<i>Liquidambar styraciflua</i>		1													1
<i>Morella cerifera</i>															0
<i>Pinus spp.</i>			1												1
<i>Platanus occidentalis</i>															0
<i>Quercus nigra</i>															0
<i>Quercus phellos</i>															0
<i>Ulmus americana</i>															0
Total for plot														3	

Table 53. Plot 16-1. 2005 Monitoring Data - Little Conetnenta Creek Riparian Buffer Restoration - Phase 3 - Greene County, NC.

Species	Average Diameter (cm)	Average Height (cm)	Total Living	Total Dead	Diameter	Height	Diameter	Height	Diameter	Height	Diameter	Height	Diameter	Height	Diameter	Height
<i>Fraxinus americana</i>																
<i>Fraxinus pensylvanica</i>	0.78	98.91	14		1.9	116	0.4	149	1.2	91	0.4	140	0.9	64	0.8	64
<i>Liriodendron tulipifera</i>																
<i>Platanus occidentalis</i>	3.00	289.60	1		3	290										
<i>Quercus nigra</i>																
<i>Quercus pagoda</i>																
<i>Quercus phellos</i>																
<i>Quercus rubra</i>	0.90	64.00	1		0.9	64										
<i>Quercus falcata</i>																
<i>Quercus michauxii</i>																
<i>Quercus lyrata</i>																
<i>Quercus alba</i>																
<i>Quercus spp.</i>																
<i>Taxodium distichum</i>	0.60	70.10	1		0.6	70										
<i>Betula nigra</i>																

Total/Average

17

Table 53. Plot 16-1. 2005 Monitoring Data - Little Conetnenta Creek Riparian Buffer Restoration - Phase 3 - Greene County, NC.

Species	Diameter	Height	Diameter	Height	Diameter	Height	Diameter	Height	Diameter	Height	Diameter	Height	Diameter	Height	Diameter	Height
<i>Fraxinus americana</i>																
<i>Fraxinus pensylvanica</i>	0.5	144	0.6	172	0.9	61	0.6	170	0.7	67	0.8	58	0.6	49	0.6	40
<i>Liriodendron tulipifera</i>																
<i>Platanus occidentalis</i>																
<i>Quercus nigra</i>																
<i>Quercus pagoda</i>																
<i>Quercus phellos</i>																
<i>Quercus rubra</i>																
<i>Quercus falcata</i>																
<i>Quercus michauxii</i>																
<i>Quercus lyrata</i>																
<i>Quercus alba</i>																
<i>Quercus spp.</i>																
<i>Taxodium distichum</i>																
<i>Betula nigra</i>																

Total/Average

Table 53. Plot 16-1. 2005 Monitoring Data - Little Conetnenta Creek Riparian Buffer Restoration - Phase 3 - Greene County, NC.

Natural Woody stems	SEEDLING HT CLASS			SAPLINGS DBH		TREES - DBH							TOTAL		
	10-50cm	50-100cm	100-137cm	0-1 cm	1-2.5 cm	2.5	5	10	15	20	25	30		35	40
<i>Acer rubrum</i>															0
<i>Baccharis halimifolia</i>															0
<i>Carya spp</i>															0
<i>Celtis spp.</i>															0
<i>Crataegus spp</i>															0
<i>Diospyrus virginiana</i>															0
<i>Liquidambar styraciflua</i>															0
<i>Morella cerifera</i>															0
<i>Pinus spp.</i>						1									1
<i>Platanus occidentalis</i>															0
<i>Quercus nigra</i>															0
<i>Quercus phellos</i>															0
<i>Ulmus americana</i>															0

Total for plot 1

Table 54. Plot 16-2. 2005 Monitoring Data - Little Contentnea Creek Riparian Buffer Restoration - Phase 3 - Greene County, NC.

Species	Average Diameter (cm)	Average Height (cm)	Total Living	Total Dead	Diameter	Height	Diameter	Height	Diameter	Height	Diameter	Height	Diameter	Height	Diameter	Height
<i>Fraxinus americana</i>																
<i>Fraxinus pensylvanica</i>	0.62	48.77	6		0.5	43	0.6	40	0.7	52	0.8	61	0.8	52	0.3	46
<i>Liriodendron tulipifera</i>																
<i>Platanus occidentalis</i>	0.67	68.07	3		0.6	76	0.7	64	0.7	64						
<i>Quercus nigra</i>																
<i>Quercus pagoda</i>																
<i>Quercus phellos</i>																
<i>Quercus rubra</i>	0.95	81.30	3		0.9	67		101	1	76						
<i>Quercus falcata</i>	0.80	73.20	1		0.8	73										
<i>Quercus michauxii</i>																
<i>Quercus lyrata</i>																
<i>Quercus alba</i>																
<i>Quercus spp.</i>																
<i>Taxodium distichum</i>																
<i>Betula nigra</i>																

Total/Average

Table 54. Plot 16-2. 2005 Monitoring Data - Little Contentnea Creek Riparian Buffer Restoration - Phase 3 - Greene County, NC.

Natural Woody stems	SEEDLING HT CLASS			SAPLINGS DBH		TREES - DBH								TOTAL	
	10-50cm	50-100cm	100-137cm	0-1 cm	1-2.5 cm	2.5	5	10	15	20	25	30	35		40
<i>Acer rubrum</i>															0
<i>Baccharis halimifolia</i>															0
<i>Carya spp</i>															0
<i>Celtis spp.</i>															0
<i>Crataegus spp</i>															0
<i>Diospyrus virginiana</i>															0
<i>Liquidambar styraciflua</i>															0
<i>Morella cerifera</i>															0
<i>Pinus spp.</i>															0
<i>Platanus occidentalis</i>															0
<i>Quercus nigra</i>															0
<i>Quercus phellos</i>															0
<i>Ulmus americana</i>															0

Total for plot 0

Table 55. Plot 16-3. 2005 Monitoring Data - Little Contentnea Creek Riparian Buffer Restoration - Phase 3 - Greene County, NC.

Species	Average Diameter (cm)	Average Height (cm)	Total Living	Total Dead	Diameter	Height	Diameter	Height	Diameter	Height	Diameter	Height	Diameter	Height	Diameter	Height
<i>Fraxinus americana</i>																
<i>Fraxinus pensylvanica</i>	1.55	167.65	2		0.8	198	2.3	137								
<i>Liriodendron tulipifera</i>																
<i>Platanus occidentalis</i>																
<i>Quercus nigra</i>																
<i>Quercus pagoda</i>																
<i>Quercus phellos</i>																
<i>Quercus rubra</i>	1.03	43.70	3		1	49	1.2	64	0.9	18						
<i>Quercus falcata</i>																
<i>Quercus michauxii</i>																
<i>Quercus lyrata</i>																
<i>Quercus alba</i>																
<i>Quercus spp.</i>																
<i>Taxodium distichum</i>																
<i>Betula nigra</i>																

Total/Average

5

Table 55. Plot 16-3. 2005 Monitoring Data - Little Contentnea Creek Riparian Buffer Restoration - Phase 3 - Greene County, NC.

Natural Woody stems	SEEDLING HT CLASS			SAPLINGS DBH		TREES - DBH								TOTAL	
	10-50cm	50-100cm	100-137cm	0-1 cm	1-2.5 cm	2.5	5	10	15	20	25	30	35		40
<i>Acer rubrum</i>															0
<i>Baccharis halimifolia</i>															0
<i>Carya spp</i>															0
<i>Celtis spp.</i>															0
<i>Crataegus spp</i>															0
<i>Diospyrus virginiana</i>															0
<i>Liquidambar styraciflua</i>															0
<i>Morella cerifera</i>															0
<i>Pinus spp.</i>															0
<i>Platanus occidentalis</i>															0
<i>Quercus nigra</i>															0
<i>Quercus phellos</i>															0
<i>Ulmus americana</i>															0
Total for plot														0	