

FIFTH ANNUAL MONITORING REPORT – 2008 GROWING SEASON

**Contentnea Creek/Little Contentnea Creek Riparian Buffer Restoration – Phase 2
(EEP Contract: D04009-1)**



July 2008

Submitted to:



**Guy Pearce
North Carolina Ecosystem Enhancement
Program
2728 Capital Blvd., Suite 1H 103
Raleigh, NC 27604**

Submitted by:

**Robert J. Goldstein and Associates, Inc.
1221 Corporation Pkwy., Suite 100
Raleigh, NC 27610**



Submitted for:



**Greene Environmental Services, LLC
90 Ham Produce Rd.
Snow Hill, NC 28580**

**Greene Environmental
Services, LLC
90 Ham Produce Road
Snow Hill, NC 28580
(252) 747-8200**

Introduction and Background

In November 2004, the NC Ecosystem Enhancement Program awarded Greene Environmental Services a contract to restore 50 acres of riparian buffer along unnamed tributaries to Contentnea Creek and Little Contentnea Creek in southeastern Greene County, NC (Figure 1) (Phase 2). The project was a continuation of the successful Phase 1 project that restored 37.1 acres of riparian buffers along the unnamed tributary to Contentnea Creek. The Contentnea Creek/Little Contentnea Creek Riparian Buffer Restoration Plan was implemented in 2004 with site preparation, the planting of 26,000 saplings of 14 species, and the establishment of 53 monitoring quadrats in 16 sampling units, as specified in the project's Mitigation Plan (Figure 2).

Woody stem density, diameter, and height measurements were recorded in June 2008 within each of the 100-square meter quadrats, as detailed in the Mitigation Plan. The monitoring results, management activities to date, and planned management activities are presented below.

Results

During the 2008 monitoring, 554 planted, woody stems were recorded within the 53 quadrats, resulting in an average density of 423 planted, woody stems per acre (Figure 2) (Table 1). Additionally, a total of 857 *volunteer* woody stems were recorded inside the quadrats (471 *Acer rubrum* and 287 *Liquidambar styraciflua*). A total of 1,411 live stems woody stem were observed (1,077 stems per acre). **Average densities for planted stems and all live stems both indicate that the project has exceeded the success criterion of 320 live woody stems per acre by 32 percent and 237 percent, respectively.**

Monitoring data for planted stems indicate that *Fraxinus pennsylvanica* and *Platanus occidentalis* are the most abundant tree species (31.1 and 22.9 percent relative density). *Taxodium distichum* had the third-highest relative density among planted woody stems (9.6 %). The average of relative diameter and relative density was calculated for planted species and is presented here as the importance value. Based on this calculation, *F. pennsylvanica* and *P. occidentalis* were the most important species in the project area, with values of 19.8 and 18.5 (Table 1). *Betula nigra* had the third-highest importance value (13.4), along with highest relative diameter (21.5 percent) and the greatest average height (15.2 feet).

Maintenance (completed and planned) and Qualitative Observations

Although early successional vegetation (e.g. *Conyza canadensis* and *Eupatorium capillifolium*, 60-80 percent foliar cover) continues to be present throughout the tracts, most live, planted stems have survived their fifth growing season and larger enough to no longer be effected by these herbaceous species.

No invasive, exotic woody species were identified as problem areas or in need of removal. *L. styraciflua* and *A. rubrum*, which are by far the dominant *volunteer* woody stems counted or observed, are both native to southeastern Greene County and will not be removed.

The 2006-2007 drought caused some mortality and resulted in low, live, planted stem density in Tracts 1, 2 and 16. Bare root saplings were planted in these areas in January 2007. No problem areas were identified in 2008 and no remedial actions are necessary.

Table 1a. Importance Values - Contentnea Creek/Little Contentnea Creek Riparian Buffer Restoration - Phase 2 - Greene County, NC

Species	Total Live Stems	Total Dead	Average Height (cm)	Average Height (feet)	Average Diameter (cm)	Relative Diameter (%)	Relative Density (%)	Importance Value
<i>Betula nigra</i>	29	1	509.4	16.71	6.4	21.49	5.23	13.36
<i>Fraxinus pennsylvanica</i>	172	1	263.9	8.66	2.6	8.58	31.05	19.81
<i>Liriodendron tulipifera</i>	18	0	150.3	4.93	1.6	5.48	3.25	4.37
<i>Platanus occidentalis</i>	127	0	389.4	12.77	4.2	14.06	22.92	18.49
<i>Quercus alba</i>	5	0	155.2	5.09	1.0	3.34	0.90	2.12
<i>Quercus falcata</i>	21	0	122.3	4.01	0.9	2.93	3.79	3.36
<i>Quercus laurifolia</i>	1	0	154.0	5.05	0.4	1.34	0.18	0.76
<i>Quercus lyrata</i>	33	0	211.2	6.93	1.6	5.35	5.96	5.65
<i>Quercus michauxii</i>	27	0	260.3	8.54	2.0	6.79	4.87	5.83
<i>Quercus nigra</i>	8	0	182.4	5.98	1.5	5.06	1.44	3.25
<i>Quercus pagoda</i>	1	0	310.0	10.17	2.7	9.03	0.18	4.61
<i>Quercus phellos</i>	42	0	229.6	7.53	1.8	6.13	7.58	6.86
<i>Quercus rubra</i>	17	0	21.7	0.71	1.8	5.90	3.07	4.49
<i>Taxodium distichum</i>	53	3	183.1	6.01	1.3	4.51	9.57	7.04
Total Planted Stems	554	5						
						Average planted stems per acre	423.0	
Total natural woody stems								
(Table 1b)	857					Average natural woody stems per acre	654.4	
Total Stems	1411					Average total stems per acre	1077.4	

Table 1b. Natural Woody Stems (Volunteers) - Contentnea Creek/Little Contentnea Creek Riparian Buffer Restoration -Phase 2 - Greene County, NC

Natural Woody Stems	Seedling height class (cm)			Saplings (dbh) (cm)		Trees (dbh) (cm)										Total
	10-50	50-100	100-137	0-1	1-2.5	2.5	5	10	15	20	25	30	35	40+		
<i>Acer rubrum</i>	423	23	5	12	8	0	0	0	0	0	0	0	0	0	0	471
<i>Baccharis halimifolia</i>	1	7	1	0	3	1	0	0	0	0	0	0	0	0	0	13
<i>Carpinus caroliniana</i>	2	0	0	0	0	0	0	0	0	0	0	0	0	0	0	2
<i>Carya spp</i>	0	2	0	0	0	0	1	0	0	0	0	0	0	0	0	3
<i>Diospyrus virginiana</i>	0	2	0	0	3	0	0	0	0	0	0	0	0	0	0	5
<i>Fraxinus pennsylvanica</i>	0	5	0	0	0	0	0	0	0	0	0	0	0	0	0	5
<i>Ligustrum sinensis</i>	0	0	0	5	2	0	0	0	0	0	0	0	0	0	0	7
<i>Liquidambar styraciflua</i>	99	38	18	45	59	24	3	1	0	0	0	0	0	0	0	287
<i>Morella cerifera</i>	0	0	0	0	2	0	0	0	0	0	0	0	0	0	0	2
<i>Pinus taeda</i>	5	6	6	14	11	5	0	0	0	0	0	0	0	0	0	47
<i>Platanus occidentalis</i>	1	0	0	0	0	0	0	0	0	0	0	0	0	0	0	1
<i>Prunus serotina</i>	0	0	0	2	2	1	0	0	0	0	0	0	0	0	0	5
<i>Quercus falcata</i>	1	0	0	0	0	0	0	0	0	0	0	0	0	0	0	1
<i>Quercus lyrata</i>	0	3	0	0	0	0	0	0	0	0	0	0	0	0	0	3
<i>Quercus nigra</i>	1	1	0	0	0	0	0	0	0	0	0	0	0	0	0	2
<i>Quercus phellos</i>	1	0	0	1	0	0	0	0	0	0	0	0	0	0	0	2
<i>Sambucus canadensis</i>	1	0	0	0	0	0	0	0	0	0	0	0	0	0	0	1
TOTAL															857	

Table 1c. Average stems per acre by plot

Species	Total planted stems	Average planted stems per acre	Natural woody stems	Average total stems per acre
1-1	16	647.5	1	688.0
1-2	7	283.3	16	930.8
1-3	6	242.8	3	364.2
1-4	6	242.8	82	3,561.4
2-1	14	566.6	16	1,214.1
2-2	15	607.1	40	2,225.9
2-3	14	566.6	8	890.3
3-1	7	283.3	304	12,586.2
3-2	3	121.4	0	121.4
3-3	6	242.8	0	242.8
4-1	9	364.2	12	849.9
4-2	6	242.8	22	1,133.2
4-3	10	404.7	15	1,011.8
5-1	5	202.4	10	607.1
5-2	6	242.8	17	930.8
5-3	7	283.3	4	445.2
6-1	13	526.1	7	809.4
6-2	10	404.7	3	526.1
6-3	18	728.5	47	2,630.6
6-4	16	647.5	11	1,092.7
7-1	7	283.3	2	364.2
7-2	9	364.2	37	1,861.6
7-3	15	607.1	0	607.1
8-1	13	526.1	5	728.5
8-2	11	445.2	3	566.6
8-3	15	607.1	3	728.5
9-1	10	404.7	1	445.2
9-2	9	364.2	20	1,173.6
9-3	9	364.2	2	445.2
10-1	15	607.1	20	1,416.5
10-2	9	364.2	2	445.2
10-3	12	485.6	3	607.1
10-4	12	485.6	5	688.0
11-1	12	485.6	19	1,254.6
11-2	13	526.1	8	849.9
11-3	9	364.2	47	2,266.3
12-1	9	364.2	0	364.2

Species	Total planted stems	Average planted stems per acre	Natural woody stems	Average total stems per acre
12-2	18	728.5	11	1,173.6
12-3	6	242.8	15	849.9
13-1	15	607.1	0	607.1
13-2	6	242.8	4	404.7
13-3	9	364.2	10	768.9
14-1	9	364.2	5	566.6
14-2	11	445.2	0	445.2
14-3	14	566.6	2	647.5
14-4	12	485.6	0	485.6
15-1	8	323.8	2	404.7
15-2	9	364.2	0	364.2
15-3	9	364.2	0	364.2
15-4	5	202.4	5	404.7
16-1	15	607.1	3	728.5
16-2	9	364.2	1	404.7
16-3	6	242.8	0	242.8
Total	554	423.0		654.4

Figure 1. General Location - Contentnea Creek/Little Contentnea Creek Riparian Buffer Restoration - Greene County, NC

Greene Environmental Services, LLC
 90 Ham Produce Road, Snow Hill, NC 28580 252-747-9255

LEGEND

Phase 2 Tracts

Little Contentnea Section (Stokes Farm)

● A ● B ● C ● D

Contentnea Section (Stokes and Moye Farms)

● D-1 ● E-1 ● E-2 ● F ● G-1 ● G-2

○ Phase 1 Project (Planted in 2002)

500 0 500 Feet

Greenville

GREEN CO

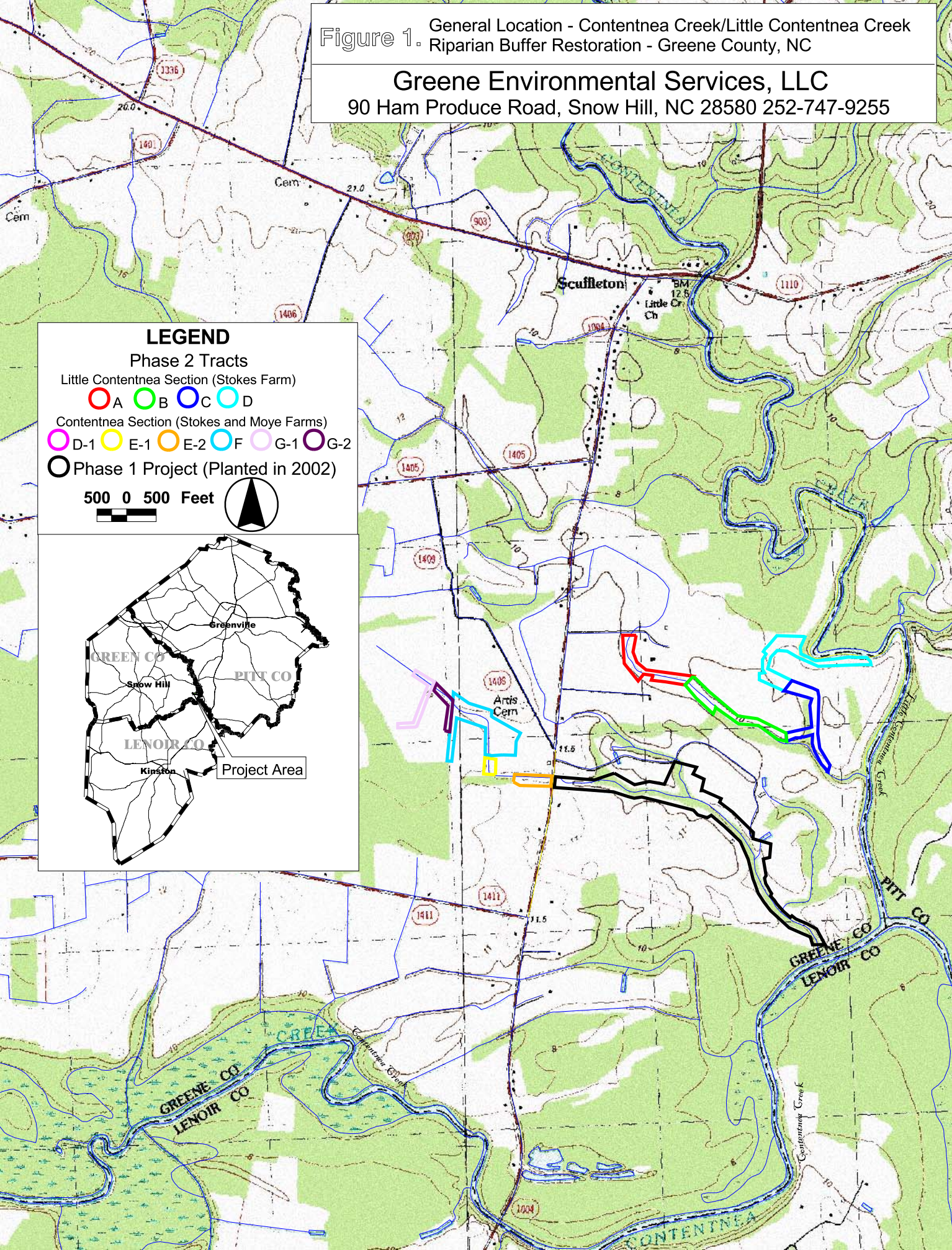
SNOW HILL

PITT CO

LENOIR CO

Kinston

Project Area



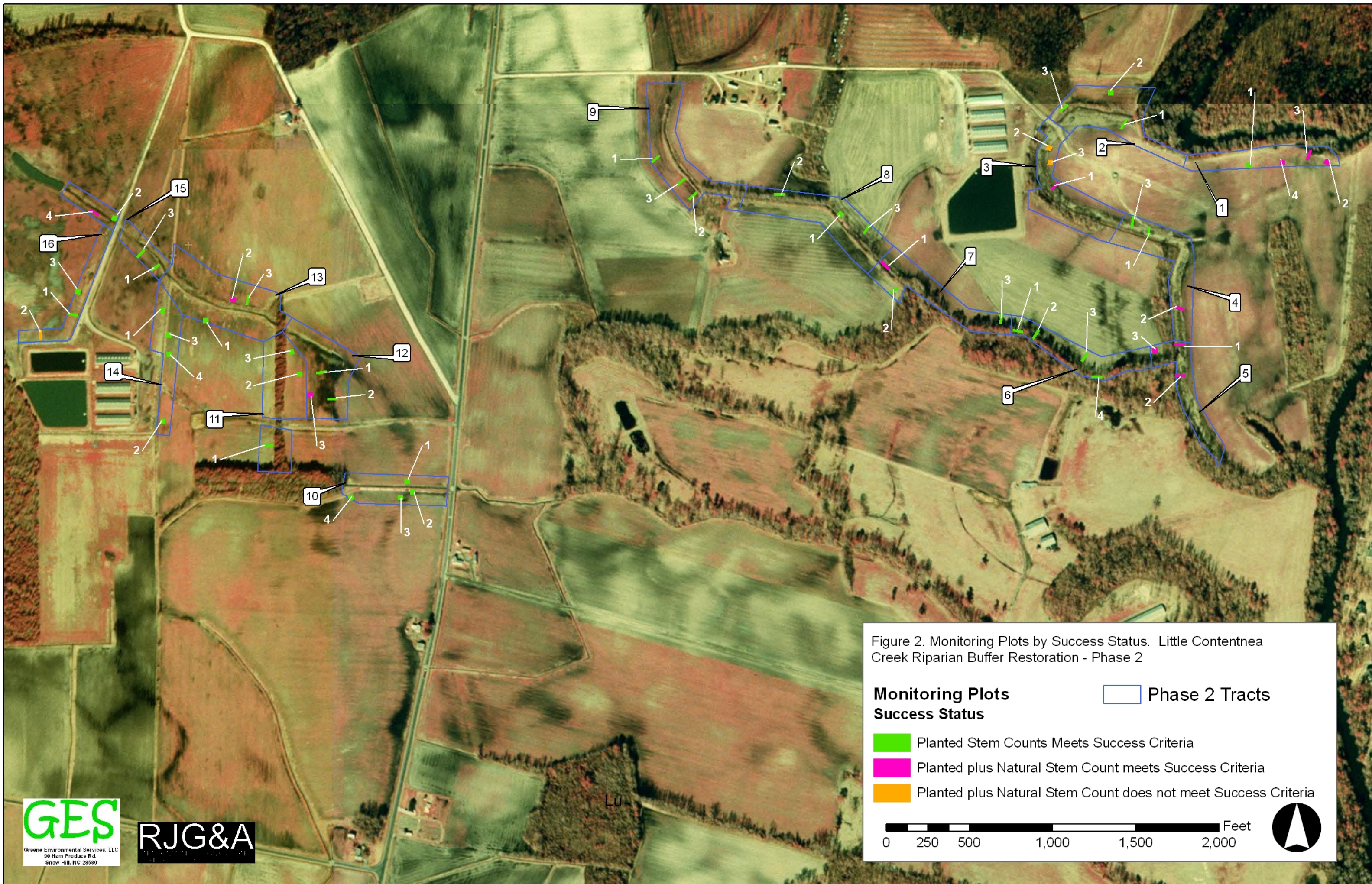


Figure 2. Monitoring Plots by Success Status. Little Contentnea Creek Riparian Buffer Restoration - Phase 2

Monitoring Plots Phase 2 Tracts

Success Status

- Planted Stem Counts Meets Success Criteria
- Planted plus Natural Stem Count meets Success Criteria
- Planted plus Natural Stem Count does not meet Success Criteria

0 250 500 1,000 1,500 2,000 Feet

Permanent Quadrat Photographs - 2008 - Contentnea Creek/Little Contentnea Creek Riparian Buffer Restoration - Phase 2



Quadrat 1-1



Quadrat 1-2

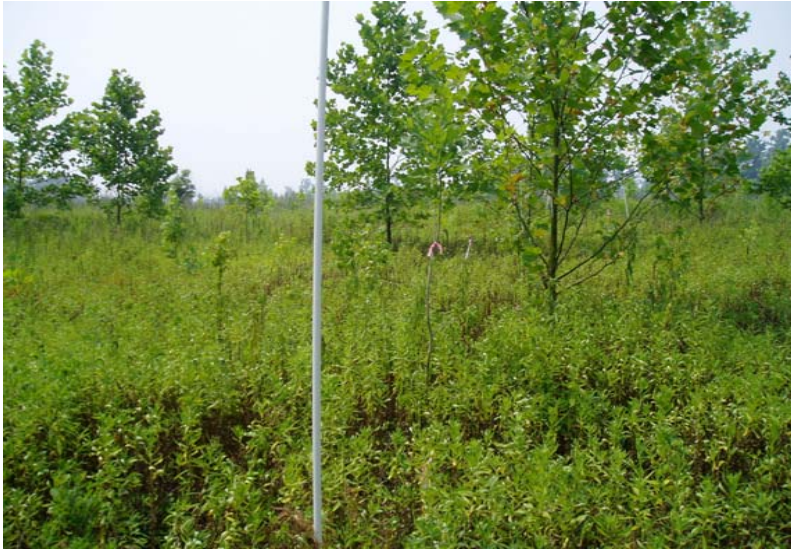


Quadrat 1-3



Quadrat 1-4

Permanent Quadrat Photographs - 2008 - Contentnea Creek/Little Contentnea Creek Riparian Buffer Restoration - Phase 2



Quadrat 2-1



Quadrat 2-2



Quadrat 2-3



Quadrat 3-1

Permanent Quadrat Photographs - 2008 - Contentnea Creek/Little Contentnea Creek Riparian Buffer Restoration - Phase 2



Quadrat 3-2



Quadrat 3-3



Quadrat 4-1



Quadrat 4-2

Permanent Quadrat Photographs - 2008 - Contentnea Creek/Little Contentnea Creek Riparian Buffer Restoration - Phase 2



Quadrat 4-3



Quadrat 5-1



Quadrat 5-2



Quadrat 5-3

Permanent Quadrat Photographs - 2008 - Contentnea Creek/Little Contentnea Creek Riparian Buffer Restoration - Phase 2



Quadrat 6-1



Quadrat 6-2



Quadrat 6-3



Quadrat 6-4

Permanent Quadrat Photographs - 2008 - Contentnea Creek/Little Contentnea Creek Riparian Buffer Restoration - Phase 2



Quadrat 7-1



Quadrat 7-2



Quadrat 7-3



Quadrat 8-1

Permanent Quadrat Photographs - 2008 - Contentnea Creek/Little Contentnea Creek Riparian Buffer Restoration - Phase 2



Quadrat 8-2



Quadrat 8-3



Quadrat 9-1



Quadrat 9-2

Permanent Quadrat Photographs - 2008 - Contentnea Creek/Little Contentnea Creek Riparian Buffer Restoration - Phase 2



Quadrat 9-3



Quadrat 10-1



Quadrat 10-2



Quadrat10-3

Permanent Quadrat Photographs - 2008 - Contentnea Creek/Little Contentnea Creek Riparian Buffer Restoration - Phase 2



Quadrat 10-4



Quadrat 11-1



Quadrat 11-2



Quadrat 11-3

Permanent Quadrat Photographs - 2008 - Contentnea Creek/Little Contentnea Creek Riparian Buffer Restoration - Phase 2



Quadrat 12-1



Quadrat 12-2



Quadrat 12-3



Quadrat 13-1

Permanent Quadrat Photographs - 2008 - Contentnea Creek/Little Contentnea Creek Riparian Buffer Restoration - Phase 2



Quadrat 13-2



Quadrat 13-3



Quadrat 14-1



Quadrat 14-2

Permanent Quadrat Photographs - 2008 - Contentnea Creek/Little Contentnea Creek Riparian Buffer Restoration - Phase 2



Quadrat 14-3



Quadrat 14-4



Quadrat 15-1



Quadrat 15-2

Permanent Quadrat Photographs - 2008 - Contentnea Creek/Little Contentnea Creek Riparian Buffer Restoration - Phase 2



Quadrat 15-3



Quadrat 15-4



Quadrat 16-1



Quadrat 16-2

Permanent Quadrat Photographs - 2008 - Contentnea Creek/Little Contentnea Creek Riparian Buffer Restoration - Phase 2



Quadrat 16-3

2008 Monitoring Data - Little Contentnea Creek Riparian Buffer Restoration - Phase 2 - Greene County, NC.

Table 2. Plot 1-1.

Species	Average Diameter (cm)	Average Height (cm)	Total Living	Total Dead	Diameter	Height	Diameter	Height	Diameter	Height	Diameter	Height	Diameter	Height	Diameter	Height	Diameter	Height
<i>Betula nigra</i>	7.45	412.50	2	0	10.5	425	4.4	400										
<i>Fraxinus pennsylvanica</i>	1.13	61.33	3	0	1.2	69	1.1	65	1.1	50								
<i>Liriodendron tulipifera</i>			1	0	0.6	58												
<i>Platanus occidentalis</i>	0.34	49.14	7	0	0.3	29	0.2	141	0.2	5	0.3	25	0.4	42	0.5	47	0.5	55
<i>Quercus alba</i>			0	0														
<i>Quercus falcata</i>			0	0														
<i>Quercus laurifolia</i>			0	0														
<i>Quercus lyrata</i>			0	0														
<i>Quercus michauxii</i>			0	0														
<i>Quercus nigra</i>			0	0														
<i>Quercus pagoda</i>			0	0														
<i>Quercus phellos</i>	1.17	213.33	3	0	0.5	185	2	250	1	205								
<i>Quercus rubra</i>			0	0														
<i>Taxodium distichum</i>			0	0														
			16	0	Total planted stems per plot													
			647.52		Total planted stems per acre													

2008 Monitoring Data - Little Contentnea Creek Riparian Buffer Restoration - Phase 2 - Greene County, NC.

Table 2. Plot 1-1.

Natural Woody stems	SEEDLING HT CLASS			SAPLINGS DBH			TREES - DBH							Total	
	10-50cm	50-100cm	100-137cm	0-1 cm	1-2.5 cm	2.5	5	10	15	20	25	30	35		40
<i>Acer rubrum</i>															0
<i>Baccharis halimifolia</i>															0
<i>Carpinus caroliniana</i>															
<i>Carya spp</i>															0
<i>Diospyrus virginiana</i>															0
<i>Fraxinus pennsylvanica</i>															0
<i>Ligustrum sinensis</i>															0
<i>Liquidambar styraciflua</i>															0
<i>Morella cerifera</i>															0
<i>Sambucus canadensis</i>															0
<i>Pinus taeda</i>															0
<i>Platanus occidentalis</i>		1													1
<i>Prunus serotina</i>															0
<i>Quercus falcata</i>															0
<i>Quercus lyrata</i>															
<i>Quercus nigra</i>															0
<i>Quercus phellos</i>															0

Total for plot 1

2008 Monitoring Data - Little Contentnea Creek Riparian Buffer Restoration - Phase 2 - Greene County, NC.

Table 3. Plot 1-2.

Species	Average Diameter (cm)	Average Height (cm)	Total Living	Total Dead	Diameter	Height	Diameter	Height	Diameter	Height	Diameter	Height	Diameter	Height	Diameter	Height
<i>Betula nigra</i>	6.57	595.00	3	0	7.5	610	5	575	7.2	600						
<i>Fraxinus pennsylvanica</i>			0	0												
<i>Liriodendron tulipifera</i>			0	0												
<i>Platanus occidentalis</i>			0	0												
<i>Quercus alba</i>			0	0												
<i>Quercus falcata</i>			0	0												
<i>Quercus laurifolia</i>			0	0												
<i>Quercus lyrata</i>			0	0												
<i>Quercus michauxii</i>			0	0												
<i>Quercus nigra</i>	0.90	109.50	2	0	1	122	0.8	97								
<i>Quercus pagoda</i>			0	0												
<i>Quercus phellos</i>			0	0												
<i>Quercus rubra</i>			0	0												
<i>Taxodium distichum</i>	0.80	62.50	2	0	1.3	100	0.3	25								
			7	0	Total planted stems per plot											
			283.29		Total planted stems per acre											

2008 Monitoring Data - Little Contentnea Creek Riparian Buffer Restoration - Phase 2 - Greene County, NC.

Table 3. Plot 1-2.

Natural Woody stems	SEEDLING HT CLASS			SAPLINGS DBH			TREES - DBH								Total
	10-50cm	50-100cm	100-137cm	0-1 cm	1-2.5 cm	2.5	5	10	15	20	25	30	35	40	
<i>Acer rubrum</i>	10														10
<i>Baccharis halimifolia</i>															0
<i>Carpinus caroliniana</i>															
<i>Carya spp</i>															0
<i>Diospyrus virginiana</i>															0
<i>Fraxinus pennsylvania</i>															
<i>Ligustrum sinensis</i>															0
<i>Liquidambar styraciflua</i>	1	3	1												5
<i>Morella cerifera</i>															0
<i>Sambucus canadensis</i>															0
<i>Pinus taeda</i>		1													1
<i>Platanus occidentalis</i>															
<i>Prunus serotina</i>															0
<i>Quercus falcata</i>															0
<i>Quercus lyrata</i>															
<i>Quercus nigra</i>															0
<i>Quercus phellos</i>															0

Total for plot 16

2008 Monitoring Data - Little Contentnea Creek Riparian Buffer Restoration - Phase 2 - Greene County, NC.

Table 4. Plot 1-3.

Species	Average Diameter (cm)	Average Height (cm)	Total Living	Total Dead	Diameter	Height	Diameter	Height	Diameter	Height	Diameter	Height	Diameter	Height	Diameter	Height
<i>Betula nigra</i>			0	0												
<i>Fraxinus pennsylvanica</i>	1.65	303.50	2	0	0.5	167	2.8	440								
<i>Liriodendron tulipifera</i>			0	0												
<i>Platanus occidentalis</i>	11.95	800.00	2	0	14.3	800	9.6	800								
<i>Quercus alba</i>			0	0												
<i>Quercus falcata</i>			0	0												
<i>Quercus laurifolia</i>			0	0												
<i>Quercus lyrata</i>			0	0												
<i>Quercus michauxii</i>			0	0												
<i>Quercus nigra</i>			0	0												
<i>Quercus pagoda</i>			0	0												
<i>Quercus phellos</i>	0.85	81.00	2	0	0.8	70	0.9	92								
<i>Quercus rubra</i>			0	0												
<i>Taxodium distichum</i>			0	0												
			6	0	Total planted stems per plot											
			242.82		Total planted stems per acre											

2008 Monitoring Data - Little Contentnea Creek Riparian Buffer Restoration - Phase 2 - Greene County, NC.

Table 4. Plot 1-3.

Natural Woody stems	SEEDLING HT CLASS			SAPLINGS DBH			TREES - DBH							Total	
	10-50cm	50-100cm	100-137cm	0-1 cm	1-2.5 cm	2.5	5	10	15	20	25	30	35		40
<i>Acer rubrum</i>															0
<i>Baccharis halimifolia</i>															0
<i>Carpinus caroliniana</i>	2														2
<i>Carya spp</i>		1													1
<i>Diospyrus virginiana</i>															0
<i>Fraxinus pennsylvanica</i>															0
<i>Ligustrum sinensis</i>															0
<i>Liquidambar styraciflua</i>															0
<i>Morella cerifera</i>															0
<i>Sambucus canadensis</i>															0
<i>Pinus taeda</i>															0
<i>Platanus occidentalis</i>															0
<i>Prunus serotina</i>															0
<i>Quercus falcata</i>															0
<i>Quercus lyrata</i>															0
<i>Quercus nigra</i>															0
<i>Quercus phellos</i>															0

Total for plot 3

2008 Monitoring Data - Little Contentnea Creek Riparian Buffer Restoration - Phase 2 - Greene County, NC.

Table 5. Plot 1-4.

Species	Average Diameter (cm)	Average Height (cm)	Total Living	Total Dead	Diameter	Height	Diameter	Height	Diameter	Height	Diameter	Height	Diameter	Height	Diameter	Height
<i>Betula nigra</i>	4.34	418.40	5	0	3.2	415	1.9	270	4.8	362	4.9	415	6.9	630		
<i>Fraxinus pennsylvanica</i>			0	0												
<i>Liriodendron tulipifera</i>			0	0												
<i>Platanus occidentalis</i>	2.00	95.00	1	0	2	95										
<i>Quercus alba</i>			0	0												
<i>Quercus falcata</i>			0	0												
<i>Quercus laurifolia</i>			0	0												
<i>Quercus lyrata</i>			0	0												
<i>Quercus michauxii</i>			0	0												
<i>Quercus nigra</i>			0	0												
<i>Quercus pagoda</i>			0	0												
<i>Quercus phellos</i>			0	0												
<i>Quercus rubra</i>			0	0												
<i>Taxodium distichum</i>			0	0												
			6	0	Total planted stems per plot											
			242.82		Total planted stems per acre											

2008 Monitoring Data - Little Contentnea Creek Riparian Buffer Restoration - Phase 2 - Greene County, NC.

Table 5. Plot 1-4.

Natural Woody stems	SEEDLING HT CLASS			SAPLINGS DBH			TREES - DBH							Total	
	10-50cm	50-100cm	100-137cm	0-1 cm	1-2.5 cm	2.5	5	10	15	20	25	30	35		40
<i>Acer rubrum</i>	30														30
<i>Baccharis halimifolia</i>															0
<i>Carpinus caroliniana</i>															
<i>Carya spp</i>															0
<i>Diospyrus virginiana</i>															0
<i>Fraxinus pennsylvania</i>															
<i>Ligustrum sinensis</i>															0
<i>Liquidambar styraciflua</i>	50	2													52
<i>Morella cerifera</i>															0
<i>Sambucus canadensis</i>															0
<i>Pinus taeda</i>															0
<i>Platanus occidentalis</i>															
<i>Prunus serotina</i>															0
<i>Quercus falcata</i>															0
<i>Quercus lyrata</i>															
<i>Quercus nigra</i>															0
<i>Quercus phellos</i>															0
Total for plot														82	

2008 Monitoring Data - Little Contentnea Creek Riparian Buffer Restoration - Phase 2 - Greene County, NC.

Table 6. Plot 2-1.

Species	Average Diameter (cm)	Average Height (cm)	Total Living	Total Dead	Diameter	Height	Diameter	Height	Diameter	Height	Diameter	Height	Diameter	Height	Diameter	Height
<i>Betula nigra</i>			0	0												
<i>Fraxinus pennsylvanica</i>	1.20	156.80	5	0	1.3	132	1.1	69	0.9	223	1	65	1.7	295		
<i>Liriodendron tulipifera</i>			0	0												
<i>Platanus occidentalis</i>	4.58	467.50	4	0	0.7	160	5.5	590	6.6	620	5.5	500				
<i>Quercus alba</i>			0	0												
<i>Quercus falcata</i>	0.35	89.50	2	0	0.3	146	0.4	33								
<i>Quercus laurifolia</i>			0	0												
<i>Quercus lyrata</i>			0	0												
<i>Quercus michauxii</i>			0	0												
<i>Quercus nigra</i>			0	0												
<i>Quercus pagoda</i>			0	0												
<i>Quercus phellos</i>			0	0												
<i>Quercus rubra</i>	0.60	48.00	1	0	0.6	48										
<i>Taxodium distichum</i>	1.35	81.50	2	0	1.9	118	0.8	45								
			14	0	Total planted stems per plot											
			566.58		Total planted stems per acre											

2008 Monitoring Data - Little Contentnea Creek Riparian Buffer Restoration - Phase 2 - Greene County, NC.

Table 6. Plot 2-1.

Natural Woody stems	SEEDLING HT CLASS			SAPLINGS DBH			TREES - DBH							Total	
	10-50cm	50-100cm	100-137cm	0-1 cm	1-2.5 cm	2.5	5	10	15	20	25	30	35		40
<i>Acer rubrum</i>	4														4
<i>Baccharis halimifolia</i>															0
<i>Carpinus caroliniana</i>															
<i>Carya spp</i>															0
<i>Diospyrus virginiana</i>															0
<i>Fraxinus pennsylvania</i>															
<i>Ligustrum sinensis</i>															0
<i>Liquidambar styraciflua</i>	6	1	4	1											12
<i>Morella cerifera</i>															0
<i>Sambucus canadensis</i>															0
<i>Pinus taeda</i>															0
<i>Platanus occidentalis</i>															
<i>Prunus serotina</i>															0
<i>Quercus falcata</i>															0
<i>Quercus lyrata</i>															
<i>Quercus nigra</i>															0
<i>Quercus phellos</i>															0

Total for plot 16

2008 Monitoring Data - Little Contentnea Creek Riparian Buffer Restoration - Phase 2 - Greene County, NC.

Table 7. Plot 2-2.

Species	Average Diameter (cm)	Average Height (cm)	Total Living	Total Dead	Diameter	Height	Diameter	Height	Diameter	Height	Diameter	Height	Diameter	Height	Diameter	Height
<i>Betula nigra</i>			0	0												
<i>Fraxinus pennsylvanica</i>	0.64	68.44	9	0	0.7	51	0.6	50	0.5	52	0.6	51	0.5	58	0.6	50
<i>Liriodendron tulipifera</i>	2.18	261.25	4	0	0.3	20	5.5	550	1	205	1.9	270				
<i>Platanus occidentalis</i>			1	0	0.2	30										
<i>Quercus alba</i>			0	0												
<i>Quercus falcata</i>			0	0												
<i>Quercus laurifolia</i>			0	0												
<i>Quercus lyrata</i>			0	0												
<i>Quercus michauxii</i>			0	0												
<i>Quercus nigra</i>			0	0												
<i>Quercus pagoda</i>			0	0												
<i>Quercus phellos</i>	0.50	63.00	1	0	0.5	63										
<i>Quercus rubra</i>			0	0												
<i>Taxodium distichum</i>			0	0												
			15	0	Total planted stems per plot											
			607.05		Total planted stems per acre											

2008 Monitoring Data - Little Contentnea Creek Riparian Buffer Restoration - Phase 2 - Greene County, NC.

Table 7. Plot 2-2.

Natural Woody stems	SEEDLING HT CLASS			SAPLINGS DBH			TREES - DBH							Total	
	10-50cm	50-100cm	100-137cm	0-1 cm	1-2.5 cm	2.5	5	10	15	20	25	30	35		40
<i>Acer rubrum</i>	4														4
<i>Baccharis halimifolia</i>															0
<i>Carpinus caroliniana</i>															
<i>Carya spp</i>															0
<i>Diospyrus virginiana</i>															0
<i>Fraxinus pennsylvanica</i>															
<i>Ligustrum sinensis</i>															0
<i>Liquidambar styraciflua</i>	6	5	1	9	9	4									34
<i>Morella cerifera</i>															0
<i>Sambucus canadensis</i>															0
<i>Pinus taeda</i>			1	1											2
<i>Platanus occidentalis</i>															
<i>Prunus serotina</i>															0
<i>Quercus falcata</i>															0
<i>Quercus lyrata</i>															
<i>Quercus nigra</i>															0
<i>Quercus phellos</i>															0

Total for plot 40

2008 Monitoring Data - Little Contentnea Creek Riparian Buffer Restoration - Phase 2 - Greene County, NC.

Table 8. Plot 2-3.

Species	Average Diameter (cm)	Average Height (cm)	Total Living	Total Dead	Diameter	Height	Diameter	Height	Diameter	Height	Diameter	Height	Diameter	Height	Diameter	Height
<i>Betula nigra</i>			0	0												
<i>Fraxinus pennsylvanica</i>	1.28	140.50	6	0	1.6	118	1.7	130	1.5	265	1.3	86	0.3	143	1.3	101
<i>Liriodendron tulipifera</i>	0.48	23.80	5	0	1.3	53	0.3	28	0.2	9	0.5	29	0.1	0		
<i>Platanus occidentalis</i>			0	0												
<i>Quercus alba</i>			0	0												
<i>Quercus falcata</i>			0	0												
<i>Quercus laurifolia</i>			0	0												
<i>Quercus lyrata</i>			0	0												
<i>Quercus michauxii</i>	0.60	51.00	1	0	0.6	51										
<i>Quercus nigra</i>			0	0												
<i>Quercus pagoda</i>			0	0												
<i>Quercus phellos</i>	0.80	203.00	1	0	0.8	203										
<i>Quercus rubra</i>			0	0												
<i>Taxodium distichum</i>	0.60	160.00	1	0	0.6	160										
			14	0												
			566.58		Total planted stems per acre											

2008 Monitoring Data - Little Contentnea Creek Riparian Buffer Restoration - Phase 2 - Greene County, NC.

Table 8. Plot 2-3.

Natural Woody stems	SEEDLING HT CLASS			SAPLINGS DBH			TREES - DBH							Total	
	10-50cm	50-100cm	100-137cm	0-1 cm	1-2.5 cm	2.5	5	10	15	20	25	30	35		40
<i>Acer rubrum</i>															0
<i>Baccharis halimifolia</i>															0
<i>Carpinus caroliniana</i>															0
<i>Carya spp</i>															0
<i>Diospyrus virginiana</i>															0
<i>Fraxinus pennsylvanica</i>															0
<i>Ligustrum sinensis</i>															0
<i>Liquidambar styraciflua</i>	7		1												8
<i>Morella cerifera</i>															0
<i>Sambucus canadensis</i>															0
<i>Pinus taeda</i>															0
<i>Platanus occidentalis</i>															0
<i>Prunus serotina</i>															0
<i>Quercus falcata</i>															0
<i>Quercus lyrata</i>															0
<i>Quercus nigra</i>															0
<i>Quercus phellos</i>															0
Total for plot														8	

2008 Monitoring Data - Little Contentnea Creek Riparian Buffer Restoration - Phase 2 - Greene County, NC.

Table 9. Plot 3-1.

Species	Average Diameter (cm)	Average Height (cm)	Total Living	Total Dead	Diameter	Height	Diameter	Height	Diameter	Height	Diameter	Height	Diameter	Height	Diameter	Height
<i>Betula nigra</i>	9.70	695.00	2	0	10.2	700	9.2	690								
<i>Fraxinus pennsylvanica</i>	1.70	310.00	1	0	1.7	310										
<i>Liriodendron tulipifera</i>			0	0												
<i>Platanus occidentalis</i>			0	0												
<i>Quercus alba</i>			0	0												
<i>Quercus falcata</i>	0.30	145.00	1	0	0.3	145										
<i>Quercus laurifolia</i>			0	0												
<i>Quercus lyrata</i>	1.00	77.00	1	0	1	77										
<i>Quercus michauxii</i>			0	0												
<i>Quercus nigra</i>			0	0												
<i>Quercus pagoda</i>			0	0												
<i>Quercus phellos</i>			0	0												
<i>Quercus rubra</i>			0	0												
<i>Taxodium distichum</i>	0.25	150.00	2	0	0.1	139	0.4	161								
			7	0	Total planted stems per plot											
			283.29		Total planted stems per acre											

2008 Monitoring Data - Little Contentnea Creek Riparian Buffer Restoration - Phase 2 - Greene County, NC.

Table 9. Plot 3-1.

Natural Woody stems	SEEDLING HT CLASS			SAPLINGS DBH			TREES - DBH							Total	
	10-50cm	50-100cm	100-137cm	0-1 cm	1-2.5 cm	2.5	5	10	15	20	25	30	35		40
<i>Acer rubrum</i>	300	4													304
<i>Baccharis halimifolia</i>															0
<i>Carpinus caroliniana</i>															
<i>Carya spp</i>															0
<i>Diospyrus virginiana</i>															0
<i>Fraxinus pennsylvania</i>															
<i>Ligustrum sinensis</i>															0
<i>Liquidambar styraciflua</i>															0
<i>Morella cerifera</i>															0
<i>Sambucus canadensis</i>															0
<i>Pinus taeda</i>															0
<i>Platanus occidentalis</i>															
<i>Prunus serotina</i>															0
<i>Quercus falcata</i>															0
<i>Quercus lyrata</i>															
<i>Quercus nigra</i>															0
<i>Quercus phellos</i>															0

Total for plot 304

2008 Monitoring Data - Little Contentnea Creek Riparian Buffer Restoration - Phase 2 - Greene County, NC.

Table 10. Plot 3-2.

Species	Average Diameter (cm)	Average Height (cm)	Total Living	Total Dead	Diameter	Height	Diameter	Height	Diameter	Height	Diameter	Height	Diameter	Height	Diameter	Height
<i>Betula nigra</i>			0	0												
<i>Fraxinus pennsylvanica</i>			0	1	d	d										
<i>Liriodendron tulipifera</i>			0	0												
<i>Platanus occidentalis</i>	0.30	27.00	1	0	0.3	27										
<i>Quercus alba</i>			0	0												
<i>Quercus falcata</i>			0	0												
<i>Quercus laurifolia</i>			0	0												
<i>Quercus lyrata</i>			0	0												
<i>Quercus michauxii</i>			0	0												
<i>Quercus nigra</i>			0	0												
<i>Quercus pagoda</i>			0	0												
<i>Quercus phellos</i>			0	0												
<i>Quercus rubra</i>	0.20	21.00	1	0	0.2	21										
<i>Taxodium distichum</i>	1.50	225.00	1	0	1.5	225										
			3	1	Total planted stems per plot											
			121.41		Total planted stems per acre											

2008 Monitoring Data - Little Contentnea Creek Riparian Buffer Restoration - Phase 2 - Greene County, NC.

Table 10. Plot 3-2.

Natural Woody stems	SEEDLING HT CLASS			SAPLINGS DBH			TREES - DBH							Total	
	10-50cm	50-100cm	100-137cm	0-1 cm	1-2.5 cm	2.5	5	10	15	20	25	30	35		40
<i>Acer rubrum</i>															0
<i>Baccharis halimifolia</i>															0
<i>Carpinus caroliniana</i>															
<i>Carya spp</i>															0
<i>Diospyrus virginiana</i>															0
<i>Fraxinus pennsylvania</i>															
<i>Ligustrum sinensis</i>															0
<i>Liquidambar styraciflua</i>															0
<i>Morella cerifera</i>															0
<i>Sambucus canadensis</i>															0
<i>Pinus taeda</i>															0
<i>Platanus occidentalis</i>															
<i>Prunus serotina</i>															0
<i>Quercus falcata</i>															0
<i>Quercus lyrata</i>															
<i>Quercus nigra</i>															0
<i>Quercus phellos</i>															0
Total for plot														0	

2008 Monitoring Data - Little Contentnea Creek Riparian Buffer Restoration - Phase 2 - Greene County, NC.

Table 11. Plot 3-3.

Species	Average Diameter (cm)	Average Height (cm)	Total Living	Total Dead	Diameter	Height	Diameter	Height	Diameter	Height	Diameter	Height	Diameter	Height	Diameter	Height
<i>Betula nigra</i>	9.50	580.00	1	0	9.5	580										
<i>Fraxinus pennsylvanica</i>	4.00	386.50	2	0	3.4	348	4.6	425								
<i>Liriodendron tulipifera</i>			0	0												
<i>Platanus occidentalis</i>			0	0												
<i>Quercus alba</i>			0	0												
<i>Quercus falcata</i>			0	0												
<i>Quercus laurifolia</i>			0	0												
<i>Quercus lyrata</i>			0	0												
<i>Quercus michauxii</i>			0	0												
<i>Quercus nigra</i>			0	0												
<i>Quercus pagoda</i>			0	0												
<i>Quercus phellos</i>			0	0												
<i>Quercus rubra</i>			0	0												
<i>Taxodium distichum</i>	1.63	150.33	3	0	0.4	163	1.3	23	3.2	265						
			6	0	Total planted stems per plot											
			242.82		Total planted stems per acre											

2008 Monitoring Data - Little Contentnea Creek Riparian Buffer Restoration - Phase 2 - Greene County, NC.

Table 11. Plot 3-3.

Natural Woody stems	SEEDLING HT CLASS			SAPLINGS DBH			TREES - DBH							Total	
	10-50cm	50-100cm	100-137cm	0-1 cm	1-2.5 cm	2.5	5	10	15	20	25	30	35		40
<i>Acer rubrum</i>															0
<i>Baccharis halimifolia</i>															0
<i>Carpinus caroliniana</i>															
<i>Carya spp</i>															0
<i>Diospyrus virginiana</i>															0
<i>Fraxinus pennsylvania</i>															
<i>Ligustrum sinensis</i>															0
<i>Liquidambar styraciflua</i>															0
<i>Morella cerifera</i>															0
<i>Sambucus canadensis</i>															0
<i>Pinus taeda</i>															0
<i>Platanus occidentalis</i>															
<i>Prunus serotina</i>															0
<i>Quercus falcata</i>															0
<i>Quercus lyrata</i>															
<i>Quercus nigra</i>															0
<i>Quercus phellos</i>															0
Total for plot														0	

2008 Monitoring Data - Little Contentnea Creek Riparian Buffer Restoration - Phase 2 - Greene County, NC.

Table 12. Plot 4-1.

Species	Average Diameter (cm)	Average Height (cm)	Total Living	Total Dead	Diameter	Height	Diameter	Height	Diameter	Height	Diameter	Height	Diameter	Height	Diameter	Height
<i>Betula nigra</i>			0	0												
<i>Fraxinus pennsylvanica</i>			0	0												
<i>Liriodendron tulipifera</i>			0	0												
<i>Platanus occidentalis</i>			0	0												
<i>Quercus alba</i>			0	0												
<i>Quercus falcata</i>			0	0												
<i>Quercus laurifolia</i>			0	0												
<i>Quercus lyrata</i>			0	0												
<i>Quercus michauxii</i>			0	0												
<i>Quercus nigra</i>			0	0												
<i>Quercus pagoda</i>			0	0												
<i>Quercus phellos</i>	2.02	250.17	6	0	1.6	223	1.8	265	1.9	250	1.9	230	1.6	223	3.3	310
<i>Quercus rubra</i>			0	0												
<i>Taxodium distichum</i>	2.77	216.67	3	0	2.2	257	3.3	123	2.8	270						
			9	0	Total planted stems per plot											
			364.23		Total planted stems per acre											

2008 Monitoring Data - Little Contentnea Creek Riparian Buffer Restoration - Phase 2 - Greene County, NC.

Table 12. Plot 4-1.

Natural Woody stems	SEEDLING HT CLASS			SAPLINGS DBH			TREES - DBH							Total	
	10-50cm	50-100cm	100-137cm	0-1 cm	1-2.5 cm	2.5	5	10	15	20	25	30	35		40
<i>Acer rubrum</i>	12														12
<i>Baccharis halimifolia</i>															0
<i>Carpinus caroliniana</i>															
<i>Carya spp</i>															0
<i>Diospyrus virginiana</i>															0
<i>Fraxinus pennsylvania</i>															
<i>Ligustrum sinensis</i>															0
<i>Liquidambar styraciflua</i>															0
<i>Morella cerifera</i>															0
<i>Sambucus canadensis</i>															0
<i>Pinus taeda</i>															0
<i>Platanus occidentalis</i>															
<i>Prunus serotina</i>															0
<i>Quercus falcata</i>															0
<i>Quercus lyrata</i>															
<i>Quercus nigra</i>															0
<i>Quercus phellos</i>															0
Total for plot														12	

2008 Monitoring Data - Little Contentnea Creek Riparian Buffer Restoration - Phase 2 - Greene County, NC.

Table 13. Plot 4-2.

Species	Average Diameter (cm)	Average Height (cm)	Total Living	Total Dead	Diameter	Height	Diameter	Height	Diameter	Height	Diameter	Height	Diameter	Height	Diameter	Height
<i>Betula nigra</i>			0	0												
<i>Fraxinus pennsylvanica</i>			0	0												
<i>Liriodendron tulipifera</i>			0	0												
<i>Platanus occidentalis</i>	11.00	750.00	1	0	11	750										
<i>Quercus alba</i>			0	0												
<i>Quercus falcata</i>			0	0												
<i>Quercus laurifolia</i>			0	0												
<i>Quercus lyrata</i>			0	0												
<i>Quercus michauxii</i>			0	0												
<i>Quercus nigra</i>	2.23	297.00	3	0	1.6	290	2.6	308	2.5	293						
<i>Quercus pagoda</i>			0	0												
<i>Quercus phellos</i>	0.60	123.00	1	0	0.6	123										
<i>Quercus rubra</i>			0	0												
<i>Taxodium distichum</i>	1.10	33.00	1	0	1.1	33										
			6	0	Total planted stems per plot											
			242.82		Total planted stems per acre											

2008 Monitoring Data - Little Contentnea Creek Riparian Buffer Restoration - Phase 2 - Greene County, NC.

Table 13. Plot 4-2.

Natural Woody stems	SEEDLING HT CLASS			SAPLINGS DBH			TREES - DBH							Total	
	10-50cm	50-100cm	100-137cm	0-1 cm	1-2.5 cm	2.5	5	10	15	20	25	30	35		40
<i>Acer rubrum</i>	18														18
<i>Baccharis halimifolia</i>															0
<i>Carpinus caroliniana</i>															
<i>Carya spp</i>															0
<i>Diospyrus virginiana</i>															0
<i>Fraxinus pennsylvania</i>															
<i>Ligustrum sinensis</i>															0
<i>Liquidambar styraciflua</i>	2	1	1												4
<i>Morella cerifera</i>															0
<i>Sambucus canadensis</i>															0
<i>Pinus taeda</i>															0
<i>Platanus occidentalis</i>															
<i>Prunus serotina</i>															0
<i>Quercus falcata</i>															0
<i>Quercus lyrata</i>															
<i>Quercus nigra</i>															0
<i>Quercus phellos</i>															0

Total for plot 22

2008 Monitoring Data - Little Contentnea Creek Riparian Buffer Restoration - Phase 2 - Greene County, NC.

Table 14. Plot 4-3.

Species	Average Diameter (cm)	Average Height (cm)	Total Living	Total Dead	Diameter	Height	Diameter	Height	Diameter	Height	Diameter	Height	Diameter	Height	Diameter	Height
<i>Betula nigra</i>			0	0												
<i>Fraxinus pennsylvanica</i>			0	0												
<i>Liriodendron tulipifera</i>			0	0												
<i>Platanus occidentalis</i>	0.30	21.00	2	0	0.3	22	0.3	20								
<i>Quercus alba</i>			0	0												
<i>Quercus falcata</i>			0	0												
<i>Quercus laurifolia</i>			0	0												
<i>Quercus lyrata</i>			1	0	0.3	41										
<i>Quercus michauxii</i>	0.60	175.00	1	0	0.6	175										
<i>Quercus nigra</i>			0	0												
<i>Quercus pagoda</i>			0	0												
<i>Quercus phellos</i>	1.75	202.50	4	0	1.4	255	1.7	135	2.8	305	1.1	115				
<i>Quercus rubra</i>	0.90	59.00	1	0	0.9	59										
<i>Taxodium distichum</i>	2.60	70.00	1	0	2.6	70										
			10	0	Total planted stems per plot											
			404.7		Total planted stems per acre											

2008 Monitoring Data - Little Contentnea Creek Riparian Buffer Restoration - Phase 2 - Greene County, NC.

Table 14. Plot 4-3.

Natural Woody stems	SEEDLING HT CLASS			SAPLINGS DBH			TREES - DBH							Total	
	10-50cm	50-100cm	100-137cm	0-1 cm	1-2.5 cm	2.5	5	10	15	20	25	30	35		40
<i>Acer rubrum</i>	3	12													15
<i>Baccharis halimifolia</i>															0
<i>Carpinus caroliniana</i>															
<i>Carya spp</i>															0
<i>Diospyrus virginiana</i>															0
<i>Fraxinus pennsylvania</i>															
<i>Ligustrum sinensis</i>															0
<i>Liquidambar styraciflua</i>															0
<i>Morella cerifera</i>															0
<i>Sambucus canadensis</i>															0
<i>Pinus taeda</i>															0
<i>Platanus occidentalis</i>															
<i>Prunus serotina</i>															0
<i>Quercus falcata</i>															0
<i>Quercus lyrata</i>															
<i>Quercus nigra</i>															0
<i>Quercus phellos</i>															0
Total for plot														15	

2008 Monitoring Data - Little Contentnea Creek Riparian Buffer Restoration - Phase 2 - Greene County, NC.

Table 15. Plot 5-1.

Species	Average Diameter (cm)	Average Height (cm)	Total Living	Total Dead	Diameter	Height	Diameter	Height	Diameter	Height	Diameter	Height	Diameter	Height	Diameter	Height
<i>Betula nigra</i>	5.10	430.00	1	0	5.1	430										
<i>Fraxinus pennsylvanica</i>			0	0												
<i>Liriodendron tulipifera</i>			0	0												
<i>Platanus occidentalis</i>	9.00	630.00	1	0	9	630										
<i>Quercus alba</i>			0	0												
<i>Quercus falcata</i>			0	0												
<i>Quercus laurifolia</i>			0	0												
<i>Quercus lyrata</i>			0	0												
<i>Quercus michauxii</i>			0	0												
<i>Quercus nigra</i>	1.00	131.00	1	0	1	131										
<i>Quercus pagoda</i>			0	0												
<i>Quercus phellos</i>			0	0												
<i>Quercus rubra</i>			0	0												
<i>Taxodium distichum</i>	1.60	167.50	2	0	1.6	105	1.6	230								
			5	0	Total planted stems per plot											
			202.35		Total planted stems per acre											

2008 Monitoring Data - Little Contentnea Creek Riparian Buffer Restoration - Phase 2 - Greene County, NC.

Table 15. Plot 5-1.

Natural Woody stems	SEEDLING HT CLASS			SAPLINGS DBH			TREES - DBH							Total	
	10-50cm	50-100cm	100-137cm	0-1 cm	1-2.5 cm	2.5	5	10	15	20	25	30	35		40
<i>Acer rubrum</i>	8	1	1												10
<i>Baccharis halimifolia</i>															0
<i>Carpinus caroliniana</i>															
<i>Carya spp</i>															0
<i>Diospyrus virginiana</i>															0
<i>Fraxinus pennsylvania</i>															
<i>Ligustrum sinensis</i>															0
<i>Liquidambar styraciflua</i>															0
<i>Morella cerifera</i>															0
<i>Sambucus canadensis</i>															0
<i>Pinus taeda</i>															0
<i>Platanus occidentalis</i>															
<i>Prunus serotina</i>															0
<i>Quercus falcata</i>															0
<i>Quercus lyrata</i>															
<i>Quercus nigra</i>															0
<i>Quercus phellos</i>															0

Total for plot 10

2008 Monitoring Data - Little Contentnea Creek Riparian Buffer Restoration - Phase 2 - Greene County, NC.

Table 16. Plot 5-2.

Species	Average Diameter (cm)	Average Height (cm)	Total Living	Total Dead	Diameter	Height	Diameter	Height	Diameter	Height	Diameter	Height	Diameter	Height	Diameter	Height
<i>Betula nigra</i>	6.10	530.00	1	0	6.1	530										
<i>Fraxinus pennsylvanica</i>			0	0												
<i>Liriodendron tulipifera</i>			0	0												
<i>Platanus occidentalis</i>	8.25	642.50	2	0	8.5	625	8	660								
<i>Quercus alba</i>			0	0												
<i>Quercus falcata</i>			0	0												
<i>Quercus laurifolia</i>	0.40	154.00	1	0	0.4	154										
<i>Quercus lyrata</i>			0	0												
<i>Quercus michauxii</i>			0	0												
<i>Quercus nigra</i>	1.30	133.00	1	0	1.3	133										
<i>Quercus pagoda</i>			0	0												
<i>Quercus phellos</i>			0	0												
<i>Quercus rubra</i>			0	0												
<i>Taxodium distichum</i>	1.90	230.00	1	0	1.9	230										
			6	0	Total planted stems per plot											
			242.82		Total planted stems per acre											

2008 Monitoring Data - Little Contentnea Creek Riparian Buffer Restoration - Phase 2 - Greene County, NC.

Table 16. Plot 5-2.

Natural Woody stems	SEEDLING HT CLASS			SAPLINGS DBH			TREES - DBH							Total	
	10-50cm	50-100cm	100-137cm	0-1 cm	1-2.5 cm	2.5	5	10	15	20	25	30	35		40
<i>Acer rubrum</i>															0
<i>Baccharis halimifolia</i>															0
<i>Carpinus caroliniana</i>															
<i>Carya spp</i>															0
<i>Diospyrus virginiana</i>															0
<i>Fraxinus pennsylvania</i>															
<i>Ligustrum sinensis</i>															0
<i>Liquidambar styraciflua</i>	1	4	1	7	4										17
<i>Morella cerifera</i>															0
<i>Sambucus canadensis</i>															0
<i>Pinus taeda</i>															0
<i>Platanus occidentalis</i>															
<i>Prunus serotina</i>															0
<i>Quercus falcata</i>															0
<i>Quercus lyrata</i>															
<i>Quercus nigra</i>															0
<i>Quercus phellos</i>															0

Total for plot 17

2008 Monitoring Data - Little Contentnea Creek Riparian Buffer Restoration - Phase 2 - Greene County, NC.

Table 17. Plot 5-3.

Species	Average Diameter (cm)	Average Height (cm)	Total Living	Total Dead	Diameter	Height	Diameter	Height	Diameter	Height	Diameter	Height	Diameter	Height	Diameter	Height
<i>Betula nigra</i>			0	0												
<i>Fraxinus pennsylvanica</i>	0.67	47.33	3	0	0.7	47	0.9	58	0.4	37						
<i>Liriodendron tulipifera</i>			0	0												
<i>Platanus occidentalis</i>	2.27	316.00	3	0	0.7	185	2.3	355	3.8	408						
<i>Quercus alba</i>			0	0												
<i>Quercus falcata</i>			0	0												
<i>Quercus laurifolia</i>			0	0												
<i>Quercus lyrata</i>			0	0												
<i>Quercus michauxii</i>			0	0												
<i>Quercus nigra</i>			0	0												
<i>Quercus pagoda</i>			0	0												
<i>Quercus phellos</i>			0	0												
<i>Quercus rubra</i>			0	0												
<i>Taxodium distichum</i>	1.30	86.00	1	0	1.3	86										
			7	0	Total planted stems per plot											
			283.29		Total planted stems per acre											

2008 Monitoring Data - Little Contentnea Creek Riparian Buffer Restoration - Phase 2 - Greene County, NC.

Table 17. Plot 5-3.

Natural Woody stems	SEEDLING HT CLASS			SAPLINGS DBH			TREES - DBH							Total	
	10-50cm	50-100cm	100-137cm	0-1 cm	1-2.5 cm	2.5	5	10	15	20	25	30	35		40
<i>Acer rubrum</i>	2														2
<i>Baccharis halimifolia</i>															0
<i>Carpinus caroliniana</i>															
<i>Carya spp</i>															0
<i>Diospyrus virginiana</i>															0
<i>Fraxinus pennsylvanica</i>															
<i>Ligustrum sinensis</i>															0
<i>Liquidambar styraciflua</i>		2													2
<i>Morella cerifera</i>															0
<i>Sambucus canadensis</i>															0
<i>Pinus taeda</i>															0
<i>Platanus occidentalis</i>															
<i>Prunus serotina</i>															0
<i>Quercus falcata</i>															0
<i>Quercus lyrata</i>															
<i>Quercus nigra</i>															0
<i>Quercus phellos</i>															0
Total for plot														4	

2008 Monitoring Data - Little Contentnea Creek Riparian Buffer Restoration - Phase 2 - Greene County, NC.

Table 18. Plot 6-1.

Natural Woody stems	SEEDLING HT CLASS			SAPLINGS DBH			TREES - DBH							Total	
	10-50cm	50-100cm	100-137cm	0-1 cm	1-2.5 cm	2.5	5	10	15	20	25	30	35		40
<i>Acer rubrum</i>	1														1
<i>Baccharis halimifolia</i>															0
<i>Carpinus caroliniana</i>															
<i>Carya spp</i>															0
<i>Diospyrus virginiana</i>															0
<i>Fraxinus pennsylvanica</i>															
<i>Ligustrum sinensis</i>															0
<i>Liquidambar styraciflua</i>			1	1	1	3									6
<i>Morella cerifera</i>															0
<i>Sambucus canadensis</i>															0
<i>Pinus taeda</i>															0
<i>Platanus occidentalis</i>															
<i>Prunus serotina</i>															0
<i>Quercus falcata</i>															0
<i>Quercus lyrata</i>															
<i>Quercus nigra</i>															0
<i>Quercus phellos</i>															0
Total for plot														7	

2008 Monitoring Data - Little Contentnea Creek Riparian Buffer Restoration - Phase 2 - Greene County, NC.

Table 19. Plot 6-2.

Natural Woody stems	SEEDLING HT CLASS			SAPLINGS DBH			TREES - DBH							Total	
	10-50cm	50-100cm	100-137cm	0-1 cm	1-2.5 cm	2.5	5	10	15	20	25	30	35		40
<i>Acer rubrum</i>															0
<i>Baccharis halimifolia</i>															0
<i>Carpinus caroliniana</i>															
<i>Carya spp</i>															0
<i>Diospyrus virginiana</i>															0
<i>Fraxinus pennsylvania</i>															
<i>Ligustrum sinensis</i>															0
<i>Liquidambar styraciflua</i>		3													3
<i>Morella cerifera</i>															0
<i>Sambucus canadensis</i>															0
<i>Pinus taeda</i>															0
<i>Platanus occidentalis</i>															
<i>Prunus serotina</i>															0
<i>Quercus falcata</i>															0
<i>Quercus lyrata</i>															
<i>Quercus nigra</i>															0
<i>Quercus phellos</i>															0
Total for plot														3	

2008 Monitoring Data - Little Contentnea Creek Riparian Buffer Restoration - Phase 2 - Greene County, NC.

Table 20. Plot 6-3.

Natural Woody stems	SEEDLING HT CLASS			SAPLINGS DBH			TREES - DBH								Total
	10-50cm	50-100cm	100-137cm	0-1 cm	1-2.5 cm	2.5	5	10	15	20	25	30	35	40	
<i>Acer rubrum</i>	25														25
<i>Baccharis halimifolia</i>															0
<i>Carpinus caroliniana</i>															
<i>Carya spp</i>															0
<i>Diospyrus virginiana</i>															0
<i>Fraxinus pennsylvanica</i>															
<i>Ligustrum sinensis</i>															0
<i>Liquidambar styraciflua</i>	20														20
<i>Morella cerifera</i>															0
<i>Sambucus canadensis</i>															0
<i>Pinus taeda</i>			1	1											2
<i>Platanus occidentalis</i>															
<i>Prunus serotina</i>															0
<i>Quercus falcata</i>															0
<i>Quercus lyrata</i>															
<i>Quercus nigra</i>															0
<i>Quercus phellos</i>															0

Total for plot 47

2008 Monitoring Data - Little Contentnea Creek Riparian Buffer Restoration - Phase 2 - Greene County, NC.

Table 21. Plot 6-4.

Species	Average Diameter (cm)	Average Height (cm)	Total Living	Total Dead	Diameter	Height	Diameter	Height	Diameter	Height	Diameter	Height	Diameter	Height	Diameter	Height
<i>Betula nigra</i>			0	0												
<i>Fraxinus pennsylvanica</i>			0	0												
<i>Liriodendron tulipifera</i>			0	0												
<i>Platanus occidentalis</i>	1.50	255.00	1	0	1.5	255										
<i>Quercus alba</i>			0	0												
<i>Quercus falcata</i>			0	0												
<i>Quercus laurifolia</i>			0	0												
<i>Quercus lyrata</i>	1.66	214.54	13	0	1.4	134	1.3	234	0.2	142	1.2	224	1.5	120	1.3	215
<i>Quercus michauxii</i>			0	0												
<i>Quercus nigra</i>			0	0												
<i>Quercus pagoda</i>			0	0												
<i>Quercus phellos</i>	2.45	329.00	2	0	3.5	403	1.4	255								
<i>Quercus rubra</i>			0	0												
<i>Taxodium distichum</i>			0	0												
			16	0	Total planted stems per plot											
			647.52		Total planted stems per acre											

2008 Monitoring Data - Little Contentnea Creek Riparian Buffer Restoration - Phase 2 - Greene County, NC.

Table 21. Plot 6-4.

Natural Woody stems	SEEDLING HT CLASS			SAPLINGS DBH			TREES - DBH								Total
	10-50cm	50-100cm	100-137cm	0-1 cm	1-2.5 cm	2.5	5	10	15	20	25	30	35	40	
<i>Acer rubrum</i>															0
<i>Baccharis halimifolia</i>															0
<i>Carpinus caroliniana</i>															
<i>Carya spp</i>		1													1
<i>Diospyrus virginiana</i>															0
<i>Fraxinus pennsylvanica</i>															
<i>Ligustrum sinensis</i>				5	2										7
<i>Liquidambar styraciflua</i>	1														1
<i>Morella cerifera</i>															0
<i>Sambucus canadensis</i>															0
<i>Pinus taeda</i>															0
<i>Platanus occidentalis</i>															
<i>Prunus serotina</i>					1										1
<i>Quercus falcata</i>															0
<i>Quercus lyrata</i>		3													
<i>Quercus nigra</i>		1													1
<i>Quercus phellos</i>															0

Total for plot 11

2008 Monitoring Data - Little Contentnea Creek Riparian Buffer Restoration - Phase 2 - Greene County, NC.

Table 22. Plot 7-1.

Natural Woody stems	SEEDLING HT CLASS			SAPLINGS DBH			TREES - DBH							Total	
	10-50cm	50-100cm	100-137cm	0-1 cm	1-2.5 cm	2.5	5	10	15	20	25	30	35		40
<i>Acer rubrum</i>															0
<i>Baccharis halimifolia</i>															0
<i>Carpinus caroliniana</i>															
<i>Carya spp</i>							1								1
<i>Diospyrus virginiana</i>															0
<i>Fraxinus pennsylvania</i>															
<i>Ligustrum sinensis</i>															0
<i>Liquidambar styraciflua</i>								1							1
<i>Morella cerifera</i>															0
<i>Sambucus canadensis</i>															0
<i>Pinus taeda</i>															0
<i>Platanus occidentalis</i>															
<i>Prunus serotina</i>															0
<i>Quercus falcata</i>															0
<i>Quercus lyrata</i>															
<i>Quercus nigra</i>															0
<i>Quercus phellos</i>															0
Total for plot														2	

2008 Monitoring Data - Little Contentnea Creek Riparian Buffer Restoration - Phase 2 - Greene County, NC.

Table 23. Plot 7-2.

Species	Average Diameter (cm)	Average Height (cm)	Total Living	Total Dead	Diameter	Height	Diameter	Height	Diameter	Height	Diameter	Height	Diameter	Height	Diameter	Height
<i>Betula nigra</i>			0	0												
<i>Fraxinus pennsylvanica</i>	2.23	348.00	3	0	1.2	74	3.2	520	2.3	450						
<i>Liriodendron tulipifera</i>			0	0												
<i>Platanus occidentalis</i>	9.83	912.50	4	0	12	950	9.5	900	6.8	800	11.0	1000				
<i>Quercus alba</i>			0	0												
<i>Quercus falcata</i>			0	0												
<i>Quercus laurifolia</i>			0	0												
<i>Quercus lyrata</i>			0	0												
<i>Quercus michauxii</i>			0	0												
<i>Quercus nigra</i>	1.30	85.00	1	0	1.3	85										
<i>Quercus pagoda</i>			0	0												
<i>Quercus phellos</i>	1.80	400.00	1	0	1.8	400										
<i>Quercus rubra</i>			0	0												
<i>Taxodium distichum</i>			0	0												
			9	0	Total planted stems per plot											
			364.23		Total planted stems per acre											

2008 Monitoring Data - Little Contentnea Creek Riparian Buffer Restoration - Phase 2 - Greene County, NC.

Table 23. Plot 7-2.

Natural Woody stems	SEEDLING HT CLASS			SAPLINGS DBH			TREES - DBH							Total	
	10-50cm	50-100cm	100-137cm	0-1 cm	1-2.5 cm	2.5	5	10	15	20	25	30	35		40
<i>Acer rubrum</i>	3	5	2	10	6										26
<i>Baccharis halimifolia</i>															0
<i>Carpinus caroliniana</i>															
<i>Carya spp</i>															0
<i>Diospyrus virginiana</i>															0
<i>Fraxinus pennsylvanica</i>															
<i>Ligustrum sinensis</i>															0
<i>Liquidambar styraciflua</i>		1		7	2	1									11
<i>Morella cerifera</i>															0
<i>Sambucus canadensis</i>															0
<i>Pinus taeda</i>															0
<i>Platanus occidentalis</i>															
<i>Prunus serotina</i>															0
<i>Quercus falcata</i>															0
<i>Quercus lyrata</i>															
<i>Quercus nigra</i>															0
<i>Quercus phellos</i>															0

Total for plot 37

2008 Monitoring Data - Little Contentnea Creek Riparian Buffer Restoration - Phase 2 - Greene County, NC.

Table 24. Plot 7-3.

Natural Woody stems	SEEDLING HT CLASS			SAPLINGS DBH			TREES - DBH							Total	
	10-50cm	50-100cm	100-137cm	0-1 cm	1-2.5 cm	2.5	5	10	15	20	25	30	35		40
<i>Acer rubrum</i>															0
<i>Baccharis halimifolia</i>															0
<i>Carpinus caroliniana</i>															
<i>Carya spp</i>															0
<i>Diospyrus virginiana</i>															0
<i>Fraxinus pennsylvania</i>															
<i>Ligustrum sinensis</i>															0
<i>Liquidambar styraciflua</i>															0
<i>Morella cerifera</i>															0
<i>Sambucus canadensis</i>															0
<i>Pinus taeda</i>															0
<i>Platanus occidentalis</i>															
<i>Prunus serotina</i>															0
<i>Quercus falcata</i>															0
<i>Quercus lyrata</i>															
<i>Quercus nigra</i>															0
<i>Quercus phellos</i>															0
Total for plot														0	

2008 Monitoring Data - Little Contentnea Creek Riparian Buffer Restoration - Phase 2 - Greene County, NC.

Table 25. Plot 8-1.

Natural Woody stems	SEEDLING HT CLASS			SAPLINGS DBH			TREES - DBH							Total	
	10-50cm	50-100cm	100-137cm	0-1 cm	1-2.5 cm	2.5	5	10	15	20	25	30	35		40
<i>Acer rubrum</i>															0
<i>Baccharis halimifolia</i>															0
<i>Carpinus caroliniana</i>															
<i>Carya spp</i>															0
<i>Diospyrus virginiana</i>															0
<i>Fraxinus pennsylvania</i>															
<i>Ligustrum sinensis</i>															0
<i>Liquidambar styraciflua</i>					3	1									4
<i>Morella cerifera</i>															0
<i>Sambucus canadensis</i>															0
<i>Pinus taeda</i>															0
<i>Platanus occidentalis</i>															
<i>Prunus serotina</i>															0
<i>Quercus falcata</i>															0
<i>Quercus lyrata</i>															
<i>Quercus nigra</i>															0
<i>Quercus phellos</i>					1										1
Total for plot														5	

2008 Monitoring Data - Little Contentnea Creek Riparian Buffer Restoration - Phase 2 - Greene County, NC.

Table 26. Plot 8-2.

Species	Average Diameter (cm)	Average Height (cm)	Total Living	Total Dead	Diameter	Height	Diameter	Height	Diameter	Height	Diameter	Height	Diameter	Height	Diameter	Height	Diameter	Height
<i>Betula nigra</i>			0	0														
<i>Fraxinus pennsylvanica</i>			0	0														
<i>Liriodendron tulipifera</i>			0	0														
<i>Platanus occidentalis</i>	8.10	800.00	1	0	8.1	800												
<i>Quercus alba</i>			0	0														
<i>Quercus falcata</i>	0.63	102.00	4	0	0.7	195	0.9	110	0.5	55	0.4	48						
<i>Quercus laurifolia</i>			0	0														
<i>Quercus lyrata</i>			0	0														
<i>Quercus michauxii</i>	2.47	308.33	6	0	3.6	403	3.5	420	3.5	415	1.2	230	1.2	245	1.8	137		
<i>Quercus nigra</i>			0	0														
<i>Quercus pagoda</i>			0	0														
<i>Quercus phellos</i>			0	0														
<i>Quercus rubra</i>			0	0														
<i>Taxodium distichum</i>			0	0														
			11	0	Total planted stems per plot													
			445.17		Total planted stems per acre													

2008 Monitoring Data - Little Contentnea Creek Riparian Buffer Restoration - Phase 2 - Greene County, NC.

Table 26. Plot 8-2.

Natural Woody stems	SEEDLING HT CLASS			SAPLINGS DBH			TREES - DBH								Total
	10-50cm	50-100cm	100-137cm	0-1 cm	1-2.5 cm	2.5	5	10	15	20	25	30	35	40	
<i>Acer rubrum</i>	1														1
<i>Baccharis halimifolia</i>															0
<i>Carpinus caroliniana</i>															
<i>Carya spp</i>															0
<i>Diospyrus virginiana</i>															0
<i>Fraxinus pennsylvanica</i>															
<i>Ligustrum sinensis</i>															0
<i>Liquidambar styraciflua</i>		1					1								2
<i>Morella cerifera</i>															0
<i>Sambucus canadensis</i>															0
<i>Pinus taeda</i>															0
<i>Platanus occidentalis</i>															
<i>Prunus serotina</i>															0
<i>Quercus falcata</i>															0
<i>Quercus lyrata</i>															
<i>Quercus nigra</i>															0
<i>Quercus phellos</i>															0

Total for plot 3

2008 Monitoring Data - Little Contentnea Creek Riparian Buffer Restoration - Phase 2 - Greene County, NC.

Table 27. Plot 8-3.

Natural Woody stems	SEEDLING HT CLASS			SAPLINGS DBH			TREES - DBH								Total
	10-50cm	50-100cm	100-137cm	0-1 cm	1-2.5 cm	2.5	5	10	15	20	25	30	35	40	
<i>Acer rubrum</i>	1														1
<i>Baccharis halimifolia</i>															0
<i>Carpinus caroliniana</i>															0
<i>Carya spp</i>															0
<i>Diospyrus virginiana</i>															0
<i>Fraxinus pennsylvania</i>															0
<i>Ligustrum sinensis</i>															0
<i>Liquidambar styraciflua</i>							2								2
<i>Morella cerifera</i>															0
<i>Sambucus canadensis</i>															0
<i>Pinus taeda</i>															0
<i>Platanus occidentalis</i>															0
<i>Prunus serotina</i>															0
<i>Quercus falcata</i>															0
<i>Quercus lyrata</i>															0
<i>Quercus nigra</i>															0
<i>Quercus phellos</i>															0

Total for plot 3

2008 Monitoring Data - Little Contentnea Creek Riparian Buffer Restoration - Phase 2 - Greene County, NC.

Table 28. Plot 9-1.

Species	Average Diameter (cm)	Average Height (cm)	Total Living	Total Dead	Diameter	Height	Diameter	Height	Diameter	Height	Diameter	Height	Diameter	Height	Diameter	Height	Diameter	Height
<i>Betula nigra</i>			0	0														
<i>Fraxinus pennsylvanica</i>	5.33	435.86	7	0	3.7	360	6.1	427	3.5	400	4.2	442	4	396	5.8	506	10	520
<i>Liriodendron tulipifera</i>			0	0														
<i>Platanus occidentalis</i>	0.50	162.00	1	0	0.5	162												
<i>Quercus alba</i>			0	0														
<i>Quercus falcata</i>			0	0														
<i>Quercus laurifolia</i>			0	0														
<i>Quercus lyrata</i>			0	0														
<i>Quercus michauxii</i>			0	0														
<i>Quercus nigra</i>			0	0														
<i>Quercus pagoda</i>			0	0														
<i>Quercus phellos</i>			0	0														
<i>Quercus rubra</i>			0	0														
<i>Taxodium distichum</i>	1.30	197.00	2	0	1	194	1.6	200										
			10	0	Total planted stems per plot													
			404.7		Total planted stems per acre													

2008 Monitoring Data - Little Contentnea Creek Riparian Buffer Restoration - Phase 2 - Greene County, NC.

Table 28. Plot 9-1.

Natural Woody stems	SEEDLING HT CLASS			SAPLINGS DBH			TREES - DBH							Total	
	10-50cm	50-100cm	100-137cm	0-1 cm	1-2.5 cm	2.5	5	10	15	20	25	30	35		40
<i>Acer rubrum</i>															0
<i>Baccharis halimifolia</i>															0
<i>Carpinus caroliniana</i>															
<i>Carya spp</i>															0
<i>Diospyrus virginiana</i>															0
<i>Fraxinus pennsylvania</i>															
<i>Ligustrum sinensis</i>															0
<i>Liquidambar styraciflua</i>				1											1
<i>Morella cerifera</i>															0
<i>Sambucus canadensis</i>															0
<i>Pinus taeda</i>															0
<i>Platanus occidentalis</i>															
<i>Prunus serotina</i>															0
<i>Quercus falcata</i>															0
<i>Quercus lyrata</i>															
<i>Quercus nigra</i>															0
<i>Quercus phellos</i>															0

Total for plot 1

2008 Monitoring Data - Little Contentnea Creek Riparian Buffer Restoration - Phase 2 - Greene County, NC.

Table 29. Plot 9-2.

Species	Average Diameter (cm)	Average Height (cm)	Total Living	Total Dead	Diameter	Height	Diameter	Height	Diameter	Height	Diameter	Height	Diameter	Height	Diameter	Height
<i>Betula nigra</i>			0	0												
<i>Fraxinus pennsylvanica</i>	3.28	403.75	4	0	4.1	500	3.3	400	3.8	410	1.9	305				
<i>Liriodendron tulipifera</i>			0	0												
<i>Platanus occidentalis</i>			0	0												
<i>Quercus alba</i>			0	0												
<i>Quercus falcata</i>			0	0												
<i>Quercus laurifolia</i>			0	0												
<i>Quercus lyrata</i>			0	0												
<i>Quercus michauxii</i>			0	0												
<i>Quercus nigra</i>			0	0												
<i>Quercus pagoda</i>			0	0												
<i>Quercus phellos</i>	2.07	280.33	3	0	4.1	390	1	230	1.1	221						
<i>Quercus rubra</i>			0	0												
<i>Taxodium distichum</i>	1.85	187.00	2	0	2.1	240	1.6	134								
			9	0	Total planted stems per plot											
			364.23		Total planted stems per acre											

2008 Monitoring Data - Little Contentnea Creek Riparian Buffer Restoration - Phase 2 - Greene County, NC.

Table 29. Plot 9-2.

Natural Woody stems	SEEDLING HT CLASS			SAPLINGS DBH			TREES - DBH								Total
	10-50cm	50-100cm	100-137cm	0-1 cm	1-2.5 cm	2.5	5	10	15	20	25	30	35	40	
<i>Acer rubrum</i>															0
<i>Baccharis halimifolia</i>															0
<i>Carpinus caroliniana</i>															
<i>Carya spp</i>															0
<i>Diospyrus virginiana</i>															0
<i>Fraxinus pennsylvanica</i>															
<i>Ligustrum sinensis</i>															0
<i>Liquidambar styraciflua</i>			2	7	6	5									20
<i>Morella cerifera</i>															0
<i>Sambucus canadensis</i>															0
<i>Pinus taeda</i>															0
<i>Platanus occidentalis</i>															
<i>Prunus serotina</i>															0
<i>Quercus falcata</i>															0
<i>Quercus lyrata</i>															
<i>Quercus nigra</i>															0
<i>Quercus phellos</i>															0

Total for plot 20

2008 Monitoring Data - Little Contentnea Creek Riparian Buffer Restoration - Phase 2 - Greene County, NC.

Table 30. Plot 9-3.

Species	Average Diameter (cm)	Average Height (cm)	Total Living	Total Dead	Diameter	Height	Diameter	Height	Diameter	Height	Diameter	Height	Diameter	Height	Diameter	Height
<i>Betula nigra</i>			0	0												
<i>Fraxinus pennsylvanica</i>	4.70	423.67	3	0	7.3	506	4.5	427	2.3	338						
<i>Liriodendron tulipifera</i>			0	0												
<i>Platanus occidentalis</i>	1.80	124.00	1	0	1.8	124										
<i>Quercus alba</i>			0	0												
<i>Quercus falcata</i>			0	0												
<i>Quercus laurifolia</i>			0	0												
<i>Quercus lyrata</i>			0	0												
<i>Quercus michauxii</i>			0	0												
<i>Quercus nigra</i>			0	0												
<i>Quercus pagoda</i>			0	0												
<i>Quercus phellos</i>	4.10	297.50	2	0	3.5	305	4.7	290								
<i>Quercus rubra</i>			0	0												
<i>Taxodium distichum</i>	3.17	266.67	3	0	1.6	230	4.6	274	3.3	296						
			9	0	Total planted stems per plot											
			364.23		Total planted stems per acre											

2008 Monitoring Data - Little Contentnea Creek Riparian Buffer Restoration - Phase 2 - Greene County, NC.

Table 30. Plot 9-3.

Natural Woody stems	SEEDLING HT CLASS			SAPLINGS DBH			TREES - DBH								Total
	10-50cm	50-100cm	100-137cm	0-1 cm	1-2.5 cm	2.5	5	10	15	20	25	30	35	40	
<i>Acer rubrum</i>															0
<i>Baccharis halimifolia</i>															0
<i>Carpinus caroliniana</i>															
<i>Carya spp</i>															0
<i>Diospyrus virginiana</i>															0
<i>Fraxinus pennsylvania</i>															
<i>Ligustrum sinensis</i>															0
<i>Liquidambar styraciflua</i>			1												1
<i>Morella cerifera</i>															0
<i>Sambucus canadensis</i>															0
<i>Pinus taeda</i>															0
<i>Platanus occidentalis</i>															
<i>Prunus serotina</i>							1								1
<i>Quercus falcata</i>															0
<i>Quercus lyrata</i>															
<i>Quercus nigra</i>															0
<i>Quercus phellos</i>															0
Total for plot														2	

2008 Monitoring Data - Little Contentnea Creek Riparian Buffer Restoration - Phase 2 - Greene County, NC.

Table 31. Plot 10-1.

Species	Average Diameter (cm)	Average Height (cm)	Total Living	Total Dead	Diameter	Height	Diameter	Height	Diameter	Height	Diameter	Height	Diameter	Height	Diameter	Height
<i>Betula nigra</i>			0	0												
<i>Fraxinus pennsylvanica</i>	2.10	260.20	5	0	2.5	336	3.1	310	1.8	295	2.4	305	0.7	55		
<i>Liriodendron tulipifera</i>			0	0												
<i>Platanus occidentalis</i>	1.90	284.00	2	0	1.5	253	2.3	315								
<i>Quercus alba</i>			0	0												
<i>Quercus falcata</i>			0	0												
<i>Quercus laurifolia</i>			0	0												
<i>Quercus lyrata</i>	1.38	225.00	4	0	2.3	295	1.4	240	0.6	172	1.2	193				
<i>Quercus michauxii</i>			0	0												
<i>Quercus nigra</i>			0	0												
<i>Quercus pagoda</i>			0	0												
<i>Quercus phellos</i>	1.83	195.75	4	0	1.3	223	2.7	255	1.4	90	1.9	215				
<i>Quercus rubra</i>			0	0												
<i>Taxodium distichum</i>			0	0												
			15	0	Total planted stems per plot											
			607.05		Total planted stems per acre											

2008 Monitoring Data - Little Contentnea Creek Riparian Buffer Restoration - Phase 2 - Greene County, NC.

Table 31. Plot 10-1.

Natural Woody stems	SEEDLING HT CLASS			SAPLINGS DBH			TREES - DBH							Total	
	10-50cm	50-100cm	100-137cm	0-1 cm	1-2.5 cm	2.5	5	10	15	20	25	30	35		40
<i>Acer rubrum</i>															0
<i>Baccharis halimifolia</i>															0
<i>Carpinus caroliniana</i>															
<i>Carya spp</i>															0
<i>Diospyrus virginiana</i>															0
<i>Fraxinus pennsylvania</i>															
<i>Ligustrum sinensis</i>															0
<i>Liquidambar styraciflua</i>				1											1
<i>Morella cerifera</i>															0
<i>Sambucus canadensis</i>															0
<i>Pinus taeda</i>					8	8	3								19
<i>Platanus occidentalis</i>															
<i>Prunus serotina</i>															0
<i>Quercus falcata</i>															0
<i>Quercus lyrata</i>															
<i>Quercus nigra</i>															0
<i>Quercus phellos</i>															0

Total for plot 20

2008 Monitoring Data - Little Contentnea Creek Riparian Buffer Restoration - Phase 2 - Greene County, NC.

Table 32. Plot 10-2.

Species	Average Diameter (cm)	Average Height (cm)	Total Living	Total Dead	Diameter	Height	Diameter	Height	Diameter	Height	Diameter	Height	Diameter	Height	Diameter	Height
<i>Betula nigra</i>			0	0												
<i>Fraxinus pennsylvanica</i>	0.82	78.80	5	0	0.5	150	0.9	73	1.2	67	1	76	0.5	28		
<i>Liriodendron tulipifera</i>			0	0												
<i>Platanus occidentalis</i>	1.75	245.00	2	0	2	260	1.5	230								
<i>Quercus alba</i>			0	0												
<i>Quercus falcata</i>			0	0												
<i>Quercus laurifolia</i>			0	0												
<i>Quercus lyrata</i>	1.35	174.00	2	0	1.6	260	1.1	88								
<i>Quercus michauxii</i>			0	0												
<i>Quercus nigra</i>			0	0												
<i>Quercus pagoda</i>			0	0												
<i>Quercus phellos</i>			0	0												
<i>Quercus rubra</i>			0	0												
<i>Taxodium distichum</i>			0	0												
			9	0	Total planted stems per plot											
			364.23		Total planted stems per acre											

2008 Monitoring Data - Little Contentnea Creek Riparian Buffer Restoration - Phase 2 - Greene County, NC.

Table 32. Plot 10-2.

Natural Woody stems	SEEDLING HT CLASS			SAPLINGS DBH		TREES - DBH									Total
	10-50cm	50-100cm	100-137cm	0-1 cm	1-2.5 cm	2.5	5	10	15	20	25	30	35	40	
<i>Acer rubrum</i>				1	1										2
<i>Baccharis halimifolia</i>															0
<i>Carpinus caroliniana</i>															
<i>Carya spp</i>															0
<i>Diospyrus virginiana</i>															0
<i>Fraxinus pennsylvania</i>															
<i>Ligustrum sinensis</i>															0
<i>Liquidambar styraciflua</i>															0
<i>Morella cerifera</i>															0
<i>Sambucus canadensis</i>															0
<i>Pinus taeda</i>															0
<i>Platanus occidentalis</i>															
<i>Prunus serotina</i>															0
<i>Quercus falcata</i>															0
<i>Quercus lyrata</i>															
<i>Quercus nigra</i>															0
<i>Quercus phellos</i>															0
Total for plot														2	

2008 Monitoring Data - Little Contentnea Creek Riparian Buffer Restoration - Phase 2 - Greene County, NC.

Table 33. Plot 10-3.

Species	Average Diameter (cm)	Average Height (cm)	Total Living	Total Dead	Diameter	Height	Diameter	Height	Diameter	Height	Diameter	Height	Diameter	Height	Diameter	Height	Diameter	Height
<i>Betula nigra</i>			0	0														
<i>Fraxinus pennsylvanica</i>	1.57	205.33	3	0	1	240	1.6	267	2.1	109								
<i>Liriodendron tulipifera</i>			0	0														
<i>Platanus occidentalis</i>	5.70	450.71	7	0	4.2	430	4.7	470	2.4	380	1.6	235	4.5	450	11	590	12	600
<i>Quercus alba</i>			0	0														
<i>Quercus falcata</i>			0	0														
<i>Quercus laurifolia</i>			0	0														
<i>Quercus lyrata</i>			0	0														
<i>Quercus michauxii</i>	1.80	225.00	1	0	1.8	225												
<i>Quercus nigra</i>			0	0														
<i>Quercus pagoda</i>			0	0														
<i>Quercus phellos</i>			1	0	0.5	162												
<i>Quercus rubra</i>			0	0														
<i>Taxodium distichum</i>			0	0														
			12	0	Total planted stems per plot													
			485.64		Total planted stems per acre													

2008 Monitoring Data - Little Contentnea Creek Riparian Buffer Restoration - Phase 2 - Greene County, NC.

Table 33. Plot 10-3.

Natural Woody stems	SEEDLING HT CLASS			SAPLINGS DBH			TREES - DBH							Total	
	10-50cm	50-100cm	100-137cm	0-1 cm	1-2.5 cm	2.5	5	10	15	20	25	30	35		40
<i>Acer rubrum</i>															0
<i>Baccharis halimifolia</i>	1														1
<i>Carpinus caroliniana</i>															
<i>Carya spp</i>															0
<i>Diospyrus virginiana</i>															0
<i>Fraxinus pennsylvania</i>															
<i>Ligustrum sinensis</i>															0
<i>Liquidambar styraciflua</i>															0
<i>Morella cerifera</i>															0
<i>Sambucus canadensis</i>	1														1
<i>Pinus taeda</i>															0
<i>Platanus occidentalis</i>															
<i>Prunus serotina</i>															0
<i>Quercus falcata</i>															0
<i>Quercus lyrata</i>															
<i>Quercus nigra</i>															0
<i>Quercus phellos</i>		1													1

Total for plot 3

2008 Monitoring Data - Little Contentnea Creek Riparian Buffer Restoration - Phase 2 - Greene County, NC.

Table 34. Plot 10-4.

Species	Average Diameter (cm)	Average Height (cm)	Total Living	Total Dead	Diameter	Height	Diameter	Height	Diameter	Height	Diameter	Height	Diameter	Height	Diameter	Height
<i>Betula nigra</i>			0	0												
<i>Fraxinus pennsylvanica</i>	4.46	432.00	5	0	3.7	450	4.7	430	4.6	410	4	400	5.3	470		
<i>Liriodendron tulipifera</i>			0	0												
<i>Platanus occidentalis</i>	8.36	574.00	5	0	7.9	600	7.8	550	6.7	540	11	620	8.7	560		
<i>Quercus alba</i>			0	0												
<i>Quercus falcata</i>			0	0												
<i>Quercus laurifolia</i>			0	0												
<i>Quercus lyrata</i>	1.00	198.00	2	0	1.3	212	0.7	184								
<i>Quercus michauxii</i>			0	0												
<i>Quercus nigra</i>			0	0												
<i>Quercus pagoda</i>			0	0												
<i>Quercus phellos</i>			0	0												
<i>Quercus rubra</i>			0	0												
<i>Taxodium distichum</i>			0	0												
			12	0	Total planted stems per plot											
			485.64		Total planted stems per acre											

2008 Monitoring Data - Little Contentnea Creek Riparian Buffer Restoration - Phase 2 - Greene County, NC.

Table 34. Plot 10-4.

Natural Woody stems	SEEDLING HT CLASS			SAPLINGS DBH			TREES - DBH							Total	
	10-50cm	50-100cm	100-137cm	0-1 cm	1-2.5 cm	2.5	5	10	15	20	25	30	35		40
<i>Acer rubrum</i>															0
<i>Baccharis halimifolia</i>		2													2
<i>Carpinus caroliniana</i>															
<i>Carya spp</i>															0
<i>Diospyrus virginiana</i>															0
<i>Fraxinus pennsylvania</i>															
<i>Ligustrum sinensis</i>															0
<i>Liquidambar styraciflua</i>															0
<i>Morella cerifera</i>															0
<i>Sambucus canadensis</i>															0
<i>Pinus taeda</i>	1	1	1												3
<i>Platanus occidentalis</i>															
<i>Prunus serotina</i>															0
<i>Quercus falcata</i>															0
<i>Quercus lyrata</i>															
<i>Quercus nigra</i>															0
<i>Quercus phellos</i>															0

Total for plot 5

2008 Monitoring Data - Little Contentnea Creek Riparian Buffer Restoration - Phase 2 - Greene County, NC.

Table 35. Plot 11-1.

Species	Average Diameter (cm)	Average Height (cm)	Total Living	Total Dead	Diameter	Height	Diameter	Height	Diameter	Height	Diameter	Height	Diameter	Height	Diameter	Height
<i>Betula nigra</i>			0	0												
<i>Fraxinus pennsylvanica</i>	2.43	252.63	8	0	0.9	270	4.2	380	3.6	330	4.4	480	1.5	237	2.3	102
<i>Liriodendron tulipifera</i>			0	0												
<i>Platanus occidentalis</i>			0	0												
<i>Quercus alba</i>			0	0												
<i>Quercus falcata</i>	1.30	91.50	2	0	0.8	69	1.8	114								
<i>Quercus laurifolia</i>			0	0												
<i>Quercus lyrata</i>			0	0												
<i>Quercus michauxii</i>	1.40	167.00	2	0	0.8	54	2	280								
<i>Quercus nigra</i>			0	0												
<i>Quercus pagoda</i>			0	0												
<i>Quercus phellos</i>			0	0												
<i>Quercus rubra</i>			0	0												
<i>Taxodium distichum</i>			0	0												
			12	0	Total planted stems per plot											
			485.64		Total planted stems per acre											

2008 Monitoring Data - Little Contentnea Creek Riparian Buffer Restoration - Phase 2 - Greene County, NC.

Table 35. Plot 11-1.

Natural Woody stems	SEEDLING HT CLASS			SAPLINGS DBH			TREES - DBH							Total	
	10-50cm	50-100cm	100-137cm	0-1 cm	1-2.5 cm	2.5	5	10	15	20	25	30	35		40
<i>Acer rubrum</i>															0
<i>Baccharis halimifolia</i>															0
<i>Carpinus caroliniana</i>															
<i>Carya spp</i>															0
<i>Diospyrus virginiana</i>															0
<i>Fraxinus pennsylvania</i>															
<i>Ligustrum sinensis</i>															0
<i>Liquidambar styraciflua</i>	4	8	1	3											16
<i>Morella cerifera</i>															0
<i>Sambucus canadensis</i>															0
<i>Pinus taeda</i>		1													1
<i>Platanus occidentalis</i>															
<i>Prunus serotina</i>															0
<i>Quercus falcata</i>		1													1
<i>Quercus lyrata</i>															
<i>Quercus nigra</i>		1													1
<i>Quercus phellos</i>															0

Total for plot 19

2008 Monitoring Data - Little Contentnea Creek Riparian Buffer Restoration - Phase 2 - Greene County, NC.

Table 36. Plot 11-2.

Species	Average Diameter (cm)	Average Height (cm)	Total Living	Total Dead	Diameter	Height	Diameter	Height	Diameter	Height	Diameter	Height	Diameter	Height	Diameter	Height
<i>Betula nigra</i>	6.90	690.00	3	0	7.8	630	7.6	760	5.3	680						
<i>Fraxinus pennsylvanica</i>	0.70	167.00	1	0	0.7	167										
<i>Liriodendron tulipifera</i>			0	0												
<i>Platanus occidentalis</i>	10.13	743.33	3	0	10.2	830	11	780	9.2	620						
<i>Quercus alba</i>			0	0												
<i>Quercus falcata</i>			0	0												
<i>Quercus laurifolia</i>			0	0												
<i>Quercus lyrata</i>	1.70	270.00	1	0	1.7	270										
<i>Quercus michauxii</i>	3.20	351.67	3	0	4.3	370	2.5	310	2.8	375						
<i>Quercus nigra</i>			0	0												
<i>Quercus pagoda</i>			0	0												
<i>Quercus phellos</i>	2.40	320.00	2	0	2.6	340	2.2	300								
<i>Quercus rubra</i>			0	0												
<i>Taxodium distichum</i>			0	0												
			13	0	Total planted stems per plot											
			526.11		Total planted stems per acre											

2008 Monitoring Data - Little Contentnea Creek Riparian Buffer Restoration - Phase 2 - Greene County, NC.

Table 36. Plot 11-2.

Natural Woody stems	SEEDLING HT CLASS			SAPLINGS DBH			TREES - DBH								Total
	10-50cm	50-100cm	100-137cm	0-1 cm	1-2.5 cm	2.5	5	10	15	20	25	30	35	40	
<i>Acer rubrum</i>															0
<i>Baccharis halimifolia</i>															0
<i>Carpinus caroliniana</i>															
<i>Carya spp</i>															0
<i>Diospyrus virginiana</i>															0
<i>Fraxinus pennsylvanica</i>															
<i>Ligustrum sinensis</i>															0
<i>Liquidambar styraciflua</i>						4									4
<i>Morella cerifera</i>															0
<i>Sambucus canadensis</i>															0
<i>Pinus taeda</i>			1	1		1									3
<i>Platanus occidentalis</i>															
<i>Prunus serotina</i>				1											1
<i>Quercus falcata</i>															0
<i>Quercus lyrata</i>															
<i>Quercus nigra</i>															0
<i>Quercus phellos</i>															0
Total for plot														8	

2008 Monitoring Data - Little Contentnea Creek Riparian Buffer Restoration - Phase 2 - Greene County, NC.

Table 37. Plot 11-3.

Species	Average Diameter (cm)	Average Height (cm)	Total Living	Total Dead	Diameter	Height	Diameter	Height	Diameter	Height	Diameter	Height	Diameter	Height	Diameter	Height
<i>Betula nigra</i>	7.03	548.33	3	0	5.8	575	6.3	520	9	550						
<i>Fraxinus pennsylvanica</i>			0	0												
<i>Liriodendron tulipifera</i>			0	0												
<i>Platanus occidentalis</i>			0	0												
<i>Quercus alba</i>			0	0												
<i>Quercus falcata</i>			0	0												
<i>Quercus laurifolia</i>			0	0												
<i>Quercus lyrata</i>	2.05	307.50	2	0	3	360	1.1	255								
<i>Quercus michauxii</i>	2.80	352.00	4	0	4	420	1.7	300	2.4	298	3.1	390				
<i>Quercus nigra</i>			0	0												
<i>Quercus pagoda</i>			0	0												
<i>Quercus phellos</i>			0	0												
<i>Quercus rubra</i>			0	0												
<i>Taxodium distichum</i>			0	0												
			9	0	Total planted stems per plot											
			364.23		Total planted stems per acre											

2008 Monitoring Data - Little Contentnea Creek Riparian Buffer Restoration - Phase 2 - Greene County, NC.

Table 37. Plot 11-3.

Natural Woody stems	SEEDLING HT CLASS			SAPLINGS DBH			TREES - DBH							Total	
	10-50cm	50-100cm	100-137cm	0-1 cm	1-2.5 cm	2.5	5	10	15	20	25	30	35		40
<i>Acer rubrum</i>															0
<i>Baccharis halimifolia</i>															0
<i>Carpinus caroliniana</i>															
<i>Carya spp</i>															0
<i>Diospyrus virginiana</i>															0
<i>Fraxinus pennsylvanica</i>															
<i>Ligustrum sinensis</i>															0
<i>Liquidambar styraciflua</i>				6	34	6									46
<i>Morella cerifera</i>															0
<i>Sambucus canadensis</i>															0
<i>Pinus taeda</i>					1										1
<i>Platanus occidentalis</i>															
<i>Prunus serotina</i>															0
<i>Quercus falcata</i>															0
<i>Quercus lyrata</i>															
<i>Quercus nigra</i>															0
<i>Quercus phellos</i>															0

Total for plot 47

2008 Monitoring Data - Little Contentnea Creek Riparian Buffer Restoration - Phase 2 - Greene County, NC.

Table 38. Plot 12-1.

Species	Average Diameter (cm)	Average Height (cm)	Total Living	Total Dead	Diameter	Height	Diameter	Height	Diameter	Height	Diameter	Height	Diameter	Height	Diameter	Height
<i>Betula nigra</i>			1	1	0.1	64	d	d								
<i>Fraxinus pennsylvanica</i>	2.53	261.67	3	0	1.1	70	2.6	335	3.9	380						
<i>Liriodendron tulipifera</i>			0	0												
<i>Platanus occidentalis</i>	2.55	277.50	2	0	3.2	320	1.9	235								
<i>Quercus alba</i>			0	0												
<i>Quercus falcata</i>			0	0												
<i>Quercus laurifolia</i>			0	0												
<i>Quercus lyrata</i>			0	0												
<i>Quercus michauxii</i>			0	0												
<i>Quercus nigra</i>			0	0												
<i>Quercus pagoda</i>			0	0												
<i>Quercus phellos</i>			0	0												
<i>Quercus rubra</i>			0	0												
<i>Taxodium distichum</i>	3.13	254.00	3	1	3.3	255	3.3	265	2.8	242	d	d				
			9	2	Total planted stems per plot											
			364.23		Total planted stems per acre											

2008 Monitoring Data - Little Contentnea Creek Riparian Buffer Restoration - Phase 2 - Greene County, NC.

Table 38. Plot 12-1.

Natural Woody stems	SEEDLING HT CLASS			SAPLINGS DBH			TREES - DBH							Total	
	10-50cm	50-100cm	100-137cm	0-1 cm	1-2.5 cm	2.5	5	10	15	20	25	30	35		40
<i>Acer rubrum</i>															0
<i>Baccharis halimifolia</i>															0
<i>Carpinus caroliniana</i>															
<i>Carya spp</i>															0
<i>Diospyrus virginiana</i>															0
<i>Fraxinus pennsylvania</i>															
<i>Ligustrum sinensis</i>															0
<i>Liquidambar styraciflua</i>															0
<i>Morella cerifera</i>															0
<i>Sambucus canadensis</i>															0
<i>Pinus taeda</i>															0
<i>Platanus occidentalis</i>															
<i>Prunus serotina</i>															0
<i>Quercus falcata</i>															0
<i>Quercus lyrata</i>															
<i>Quercus nigra</i>															0
<i>Quercus phellos</i>															0
Total for plot														0	

2008 Monitoring Data - Little Contentnea Creek Riparian Buffer Restoration - Phase 2 - Greene County, NC.

Table 39. Plot 12-2.

Species	Average Diameter (cm)	Average Height (cm)	Total Living	Total Dead	Diameter	Height	Diameter	Height	Diameter	Height	Diameter	Height	Diameter	Height	Diameter	Height	Diameter	Height
<i>Betula nigra</i>	6.40	485.00	2	0	5.5	440	7.3	530										
<i>Fraxinus pennsylvanica</i>	1.10	210.50	2	0	0.5	166	1.7	255										
<i>Liriodendron tulipifera</i>			0	0														
<i>Platanus occidentalis</i>	5.00	438.33	3	0	1.7	270	7.2	535	6.1	510								
<i>Quercus alba</i>			0	0														
<i>Quercus falcata</i>			0	0														
<i>Quercus laurifolia</i>			0	0														
<i>Quercus lyrata</i>			0	0														
<i>Quercus michauxii</i>	1.30	250.00	1	0	1.3	250												
<i>Quercus nigra</i>			0	0														
<i>Quercus pagoda</i>			0	0														
<i>Quercus phellos</i>			0	0														
<i>Quercus rubra</i>			0	0														
<i>Taxodium distichum</i>	2.40	233.80	10	0	2.7	245	2.2	215	2.4	215	1.7	209	1.3	200	4	315	3.6	325
			18	0	Total planted stems per plot													
			728.46		Total planted stems per acre													

2008 Monitoring Data - Little Contentnea Creek Riparian Buffer Restoration - Phase 2 - Greene County, NC.

Table 39. Plot 12-2.

Natural Woody stems	SEEDLING HT CLASS			SAPLINGS DBH		TREES - DBH								Total	
	10-50cm	50-100cm	100-137cm	0-1 cm	1-2.5 cm	2.5	5	10	15	20	25	30	35		40
<i>Acer rubrum</i>															0
<i>Baccharis halimifolia</i>		4													4
<i>Carpinus caroliniana</i>															
<i>Carya spp</i>															0
<i>Diospyrus virginiana</i>															0
<i>Fraxinus pennsylvania</i>			1												
<i>Ligustrum sinensis</i>															0
<i>Liquidambar styraciflua</i>		1													1
<i>Morella cerifera</i>															0
<i>Sambucus canadensis</i>															0
<i>Pinus taeda</i>	2	3	1												6
<i>Platanus occidentalis</i>															
<i>Prunus serotina</i>															0
<i>Quercus falcata</i>															0
<i>Quercus lyrata</i>															
<i>Quercus nigra</i>															0
<i>Quercus phellos</i>															0

Total for plot 11

2008 Monitoring Data - Little Contentnea Creek Riparian Buffer Restoration - Phase 2 - Greene County, NC.

Table 40. Plot 12-3.

Species	Average Diameter (cm)	Average Height (cm)	Total Living	Total Dead	Diameter	Height	Diameter	Height	Diameter	Height	Diameter	Height	Diameter	Height	Diameter	Height
<i>Betula nigra</i>	8.37	528.33	3	0	8	530	8.5	530	8.6	525						
<i>Fraxinus pennsylvanica</i>	2.90	370.00	1	0	2.9	370										
<i>Liriodendron tulipifera</i>			0	0												
<i>Platanus occidentalis</i>	1.25	179.00	2	0	1.3	224	1.2	134								
<i>Quercus alba</i>			0	0												
<i>Quercus falcata</i>			0	0												
<i>Quercus laurifolia</i>			0	0												
<i>Quercus lyrata</i>			0	0												
<i>Quercus michauxii</i>			0	0												
<i>Quercus nigra</i>			0	0												
<i>Quercus pagoda</i>			0	0												
<i>Quercus phellos</i>			0	0												
<i>Quercus rubra</i>			0	0												
<i>Taxodium distichum</i>			0	0												
			6	0	Total planted stems per plot											
			242.82		Total planted stems per acre											

2008 Monitoring Data - Little Contentnea Creek Riparian Buffer Restoration - Phase 2 - Greene County, NC.

Table 40. Plot 12-3.

Natural Woody stems	SEEDLING HT CLASS			SAPLINGS DBH			TREES - DBH							Total	
	10-50cm	50-100cm	100-137cm	0-1 cm	1-2.5 cm	2.5	5	10	15	20	25	30	35		40
<i>Acer rubrum</i>															0
<i>Baccharis halimifolia</i>															0
<i>Carpinus caroliniana</i>															
<i>Carya spp</i>															0
<i>Diospyrus virginiana</i>															0
<i>Fraxinus pennsylvanica</i>															
<i>Ligustrum sinensis</i>															0
<i>Liquidambar styraciflua</i>	1	6	4	2											13
<i>Morella cerifera</i>															0
<i>Sambucus canadensis</i>															0
<i>Pinus taeda</i>						2									2
<i>Platanus occidentalis</i>															
<i>Prunus serotina</i>															0
<i>Quercus falcata</i>															0
<i>Quercus lyrata</i>															
<i>Quercus nigra</i>															0
<i>Quercus phellos</i>															0

Total for plot 15

2008 Monitoring Data - Little Contentnea Creek Riparian Buffer Restoration - Phase 2 - Greene County, NC.

Table 41. Plot 13-1.

Natural Woody stems	SEEDLING HT CLASS			SAPLINGS DBH			TREES - DBH								Total
	10-50cm	50-100cm	100-137cm	0-1 cm	1-2.5 cm	2.5	5	10	15	20	25	30	35	40	
<i>Acer rubrum</i>															0
<i>Baccharis halimifolia</i>															0
<i>Carpinus caroliniana</i>															
<i>Carya spp</i>															0
<i>Diospyrus virginiana</i>															0
<i>Fraxinus pennsylvania</i>															
<i>Ligustrum sinensis</i>															0
<i>Liquidambar styraciflua</i>															0
<i>Morella cerifera</i>															0
<i>Sambucus canadensis</i>															0
<i>Pinus taeda</i>															0
<i>Platanus occidentalis</i>															
<i>Prunus serotina</i>															0
<i>Quercus falcata</i>															0
<i>Quercus lyrata</i>															
<i>Quercus nigra</i>															0
<i>Quercus phellos</i>															0
Total for plot														0	

2008 Monitoring Data - Little Contentnea Creek Riparian Buffer Restoration - Phase 2 - Greene County, NC.

Table 42. Plot 13-2.

Species	Average Diameter (cm)	Average Height (cm)	Total Living	Total Dead	Diameter	Height	Diameter	Height	Diameter	Height	Diameter	Height	Diameter	Height	Diameter	Height
<i>Betula nigra</i>	5.05	403.50	2	0	3.4	347	6.7	460								
<i>Fraxinus pennsylvanica</i>			0	0												
<i>Liriodendron tulipifera</i>			0	0												
<i>Platanus occidentalis</i>			0	0												
<i>Quercus alba</i>	0.80	184.00	2	0	0.5	177	1.1	191								
<i>Quercus falcata</i>			0	0												
<i>Quercus laurifolia</i>			0	0												
<i>Quercus lyrata</i>			0	0												
<i>Quercus michauxii</i>			0	0												
<i>Quercus nigra</i>			0	0												
<i>Quercus pagoda</i>			0	0												
<i>Quercus phellos</i>	1.00	194.00	2	0	1.5	215	0.5	173								
<i>Quercus rubra</i>			0	0												
<i>Taxodium distichum</i>			0	0												
			6	0	Total planted stems per plot											
			242.82		Total planted stems per acre											

2008 Monitoring Data - Little Contentnea Creek Riparian Buffer Restoration - Phase 2 - Greene County, NC.

Table 42. Plot 13-2.

Natural Woody stems	SEEDLING HT CLASS			SAPLINGS DBH			TREES - DBH								Total
	10-50cm	50-100cm	100-137cm	0-1 cm	1-2.5 cm	2.5	5	10	15	20	25	30	35	40	
<i>Acer rubrum</i>															0
<i>Baccharis halimifolia</i>			1												1
<i>Carpinus caroliniana</i>															
<i>Carya spp</i>															0
<i>Diospyrus virginiana</i>															0
<i>Fraxinus pennsylvanica</i>															
<i>Ligustrum sinensis</i>															0
<i>Liquidambar styraciflua</i>															0
<i>Morella cerifera</i>															0
<i>Sambucus canadensis</i>															0
<i>Pinus taeda</i>		1				1									2
<i>Platanus occidentalis</i>															
<i>Prunus serotina</i>				1											1
<i>Quercus falcata</i>															0
<i>Quercus lyrata</i>															
<i>Quercus nigra</i>															0
<i>Quercus phellos</i>															0
Total for plot														4	

2008 Monitoring Data - Little Contentnea Creek Riparian Buffer Restoration - Phase 2 - Greene County, NC.

Table 43. Plot 13-3.

	Average Diameter (cm)	Average Height (cm)	Total Living	Total Dead	Diameter	Height	Diameter	Height	Diameter	Height	Diameter	Height	Diameter	Height	Diameter	Height
<i>Betula nigra</i>			0	0												
<i>Fraxinus pennsylvanica</i>			0	0												
<i>Liriodendron tulipifera</i>			0	0												
<i>Platanus occidentalis</i>			0	0												
<i>Quercus alba</i>	1.13	136.00	3	0	0.5	27	1	113	1.9	268						
<i>Quercus falcata</i>			0	0												
<i>Quercus laurifolia</i>			0	0												
<i>Quercus lyrata</i>	1.60	274.00	2	0	0.9	210	2.3	338								
<i>Quercus michauxii</i>	2.10	275.00	1	0	2.1	275										
<i>Quercus nigra</i>	#DIV/0!	#DIV/0!	0	0												
<i>Quercus pagoda</i>			0	0												
<i>Quercus phellos</i>	1.40	154.67	3	0	1.1	58	2	290	1.1	116						
<i>Quercus rubra</i>			0	0												
<i>Taxodium distichum</i>			0	0												
			9	0	Total planted stems per plot											
			364.23		Total planted stems per acre											

2008 Monitoring Data - Little Contentnea Creek Riparian Buffer Restoration - Phase 2 - Greene County, NC.

Table 43. Plot 13-3.

Natural Woody stems	SEEDLING HT CLASS			SAPLINGS DBH			TREES - DBH							Total	
	10-50cm	50-100cm	100-137cm	0-1 cm	1-2.5 cm	2.5	5	10	15	20	25	30	35		40
<i>Acer rubrum</i>															0
<i>Baccharis halimifolia</i>		1			3	1									5
<i>Carpinus caroliniana</i>															
<i>Carya spp</i>															0
<i>Diospyrus virginiana</i>															0
<i>Fraxinus pennsylvanica</i>															
<i>Ligustrum sinensis</i>															0
<i>Liquidambar styraciflua</i>															0
<i>Morella cerifera</i>															0
<i>Sambucus canadensis</i>															0
<i>Pinus taeda</i>			1		2	1									4
<i>Platanus occidentalis</i>															
<i>Prunus serotina</i>						1									1
<i>Quercus falcata</i>															0
<i>Quercus lyrata</i>															
<i>Quercus nigra</i>															0
<i>Quercus phellos</i>															0
Total for plot														10	

2008 Monitoring Data - Little Contentnea Creek Riparian Buffer Restoration - Phase 2 - Greene County, NC.

Table 44. Plot 14-1.

Species	Average Diameter (cm)	Average Height (cm)	Total Living	Total Dead	Diameter	Height	Diameter	Height	Diameter	Height	Diameter	Height	Diameter	Height	Diameter	Height
<i>Betula nigra</i>			0	0												
<i>Fraxinus pennsylvanica</i>	2.95	350.50	6	0	2	280	3.9	390	2.2	329	3.3	430	3.6	363	2.7	311
<i>Liriodendron tulipifera</i>			0	0												
<i>Platanus occidentalis</i>	7.17	485.67	3	0	7.5	509	6.7	448	7.3	500						
<i>Quercus alba</i>			0	0												
<i>Quercus falcata</i>			0	0												
<i>Quercus laurifolia</i>			0	0												
<i>Quercus lyrata</i>			0	0												
<i>Quercus michauxii</i>			0	0												
<i>Quercus nigra</i>			0	0												
<i>Quercus pagoda</i>			0	0												
<i>Quercus phellos</i>			0	0												
<i>Quercus rubra</i>			0	0												
<i>Taxodium distichum</i>			0	0												
			9	0	Total planted stems per plot											
			364.23		Total planted stems per acre											

2008 Monitoring Data - Little Contentnea Creek Riparian Buffer Restoration - Phase 2 - Greene County, NC.

Table 44. Plot 14-1.

Natural Woody stems	SEEDLING HT CLASS			SAPLINGS DBH			TREES - DBH							Total	
	10-50cm	50-100cm	100-137cm	0-1 cm	1-2.5 cm	2.5	5	10	15	20	25	30	35		40
<i>Acer rubrum</i>															0
<i>Baccharis halimifolia</i>															0
<i>Carpinus caroliniana</i>															
<i>Carya spp</i>															0
<i>Diospyrus virginiana</i>		2				3									5
<i>Fraxinus pennsylvania</i>															
<i>Ligustrum sinensis</i>															0
<i>Liquidambar styraciflua</i>															0
<i>Morella cerifera</i>															0
<i>Sambucus canadensis</i>															0
<i>Pinus taeda</i>															0
<i>Platanus occidentalis</i>															
<i>Prunus serotina</i>															0
<i>Quercus falcata</i>															0
<i>Quercus lyrata</i>															
<i>Quercus nigra</i>															0
<i>Quercus phellos</i>															0

Total for plot 5

2008 Monitoring Data - Little Contentnea Creek Riparian Buffer Restoration - Phase 2 - Greene County, NC.

Table 45. Plot 14-2.

Natural Woody stems	SEEDLING HT CLASS			SAPLINGS DBH			TREES - DBH							Total	
	10-50cm	50-100cm	100-137cm	0-1 cm	1-2.5 cm	2.5	5	10	15	20	25	30	35		40
<i>Acer rubrum</i>															0
<i>Baccharis halimifolia</i>															0
<i>Carpinus caroliniana</i>															
<i>Carya spp</i>															0
<i>Diospyrus virginiana</i>															0
<i>Fraxinus pennsylvania</i>															
<i>Ligustrum sinensis</i>															0
<i>Liquidambar styraciflua</i>															0
<i>Morella cerifera</i>															0
<i>Sambucus canadensis</i>															0
<i>Pinus taeda</i>															0
<i>Platanus occidentalis</i>															
<i>Prunus serotina</i>															0
<i>Quercus falcata</i>															0
<i>Quercus lyrata</i>															
<i>Quercus nigra</i>															0
<i>Quercus phellos</i>															0
Total for plot														0	

2008 Monitoring Data - Little Contentnea Creek Riparian Buffer Restoration - Phase 2 - Greene County, NC.

Table 46. Plot 14-3.

Species	Average Diameter (cm)	Average Height (cm)	Total Living	Total Dead	Diameter	Height	Diameter	Height	Diameter	Height	Diameter	Height	Diameter	Height	Diameter	Height
<i>Betula nigra</i>			0	0												
<i>Fraxinus pennsylvanica</i>	2.35	304.25	4	0	1.2	245	2.2	307	1.6	260	4.4	405				
<i>Liriodendron tulipifera</i>	1.17	105.67	3	0	1.5	92	1.6	83	0.4	142						
<i>Platanus occidentalis</i>	1.23	151.33	3	0	1.4	230	1.4	168	0.9	56						
<i>Quercus alba</i>			0	0												
<i>Quercus falcata</i>			0	0												
<i>Quercus laurifolia</i>			0	0												
<i>Quercus lyrata</i>			0	0												
<i>Quercus michauxii</i>	1.13	216.33	3	0	1.1	206	1.7	264	0.6	179						
<i>Quercus nigra</i>			0	0												
<i>Quercus pagoda</i>			0	0												
<i>Quercus phellos</i>			0	0												
<i>Quercus rubra</i>			0	0												
<i>Taxodium distichum</i>	0.90	56.00	1	0	0.9	56										
			14	0	Total planted stems per plot											
			566.58		Total planted stems per acre											

2008 Monitoring Data - Little Contentnea Creek Riparian Buffer Restoration - Phase 2 - Greene County, NC.

Table 46. Plot 14-3.

Natural Woody stems	SEEDLING HT CLASS			SAPLINGS DBH			TREES - DBH							Total	
	10-50cm	50-100cm	100-137cm	0-1 cm	1-2.5 cm	2.5	5	10	15	20	25	30	35		40
<i>Acer rubrum</i>															0
<i>Baccharis halimifolia</i>															0
<i>Carpinus caroliniana</i>															
<i>Carya spp</i>															0
<i>Diospyrus virginiana</i>															0
<i>Fraxinus pennsylvania</i>															
<i>Ligustrum sinensis</i>															0
<i>Liquidambar styraciflua</i>															0
<i>Morella cerifera</i>					2										2
<i>Sambucus canadensis</i>															0
<i>Pinus taeda</i>															0
<i>Platanus occidentalis</i>															
<i>Prunus serotina</i>															0
<i>Quercus falcata</i>															0
<i>Quercus lyrata</i>															
<i>Quercus nigra</i>															0
<i>Quercus phellos</i>															0
Total for plot														2	

2008 Monitoring Data - Little Contentnea Creek Riparian Buffer Restoration - Phase 2 - Greene County, NC.

Table 47. Plot 14-4.

Natural Woody stems	SEEDLING HT CLASS			SAPLINGS DBH			TREES - DBH							Total	
	10-50cm	50-100cm	100-137cm	0-1 cm	1-2.5 cm	2.5	5	10	15	20	25	30	35		40
<i>Acer rubrum</i>															0
<i>Baccharis halimifolia</i>															0
<i>Carpinus caroliniana</i>															
<i>Carya spp</i>															0
<i>Diospyrus virginiana</i>															0
<i>Fraxinus pennsylvania</i>															
<i>Ligustrum sinensis</i>															0
<i>Liquidambar styraciflua</i>															0
<i>Morella cerifera</i>															0
<i>Sambucus canadensis</i>															0
<i>Pinus taeda</i>															0
<i>Platanus occidentalis</i>															
<i>Prunus serotina</i>															0
<i>Quercus falcata</i>															0
<i>Quercus lyrata</i>															
<i>Quercus nigra</i>															0
<i>Quercus phellos</i>															0
Total for plot														0	

2008 Monitoring Data - Little Contentnea Creek Riparian Buffer Restoration - Phase 2 - Greene County, NC.

Table 48. Plot 15-1.

Species	Average Diameter (cm)	Average Height (cm)	Total Living	Total Dead	Diameter	Height	Diameter	Height	Diameter	Height	Diameter	Height	Diameter	Height	Diameter	Height	Diameter	Height
<i>Betula nigra</i>			0	0														
<i>Fraxinus pennsylvanica</i>	3.93	389.50	6	0	3.4	400	5.1	480	3.1	380	5.4	420	5.2	440	1.4	217		
<i>Liriodendron tulipifera</i>			0	0														
<i>Platanus occidentalis</i>			0	0														
<i>Quercus alba</i>			0	0														
<i>Quercus falcata</i>			0	0														
<i>Quercus laurifolia</i>			0	0														
<i>Quercus lyrata</i>	1.40	115.00	1	0	1.4	115												
<i>Quercus michauxii</i>			0	0														
<i>Quercus nigra</i>			0	0														
<i>Quercus pagoda</i>			0	0														
<i>Quercus phellos</i>	4.20	340.00	1	0	4.2	340												
<i>Quercus rubra</i>			0	0														
<i>Taxodium distichum</i>			0	0														
			8	0	Total planted stems per plot													
			323.76		Total planted stems per acre													

2008 Monitoring Data - Little Contentnea Creek Riparian Buffer Restoration - Phase 2 - Greene County, NC.

Table 48. Plot 15-1.

Natural Woody stems	SEEDLING HT CLASS			SAPLINGS DBH			TREES - DBH							Total	
	10-50cm	50-100cm	100-137cm	0-1 cm	1-2.5 cm	2.5	5	10	15	20	25	30	35		40
<i>Acer rubrum</i>	1	1													2
<i>Baccharis halimifolia</i>															0
<i>Carpinus caroliniana</i>															
<i>Carya spp</i>															0
<i>Diospyrus virginiana</i>															0
<i>Fraxinus pennsylvania</i>															
<i>Ligustrum sinensis</i>															0
<i>Liquidambar styraciflua</i>															0
<i>Morella cerifera</i>															0
<i>Sambucus canadensis</i>															0
<i>Pinus taeda</i>															0
<i>Platanus occidentalis</i>															
<i>Prunus serotina</i>															0
<i>Quercus falcata</i>															0
<i>Quercus lyrata</i>															
<i>Quercus nigra</i>															0
<i>Quercus phellos</i>															0
Total for plot														2	

2008 Monitoring Data - Little Contentnea Creek Riparian Buffer Restoration - Phase 2 - Greene County, NC.

Table 49. Plot 15-2.

Species	Average Diameter (cm)	Average Height (cm)	Total Living	Total Dead	Diameter	Height	Diameter	Height	Diameter	Height	Diameter	Height	Diameter	Height	Diameter	Height
<i>Betula nigra</i>			0	0												
<i>Fraxinus pennsylvanica</i>	0.80	84.00	1	0	0.8	84										
<i>Liriodendron tulipifera</i>	0.87	69.00	3	0	0.9	77	0.9	78	0.8	52						
<i>Platanus occidentalis</i>	7.10	485.00	2	0	10.1	510	4.1	460								
<i>Quercus alba</i>			0	0												
<i>Quercus falcata</i>			2	0	1.9	216	2.1	135								
<i>Quercus laurifolia</i>			0	0												
<i>Quercus lyrata</i>			0	0												
<i>Quercus michauxii</i>			0	0												
<i>Quercus nigra</i>			0	0												
<i>Quercus pagoda</i>			0	0												
<i>Quercus phellos</i>			0	0												
<i>Quercus rubra</i>			0	0												
<i>Taxodium distichum</i>	1.90	220.00	1	1	d	d	1.9	220								
			9	1	Total planted stems per plot											
			364.23		Total planted stems per acre											

2008 Monitoring Data - Little Contentnea Creek Riparian Buffer Restoration - Phase 2 - Greene County, NC.

Table 49. Plot 15-2.

Natural Woody stems	SEEDLING HT CLASS			SAPLINGS DBH			TREES - DBH								Total
	10-50cm	50-100cm	100-137cm	0-1 cm	1-2.5 cm	2.5	5	10	15	20	25	30	35	40	
<i>Acer rubrum</i>															0
<i>Baccharis halimifolia</i>															0
<i>Carpinus caroliniana</i>															
<i>Carya spp</i>															0
<i>Diospyrus virginiana</i>															0
<i>Fraxinus pennsylvania</i>															
<i>Ligustrum sinensis</i>															0
<i>Liquidambar styraciflua</i>															0
<i>Morella cerifera</i>															0
<i>Sambucus canadensis</i>															0
<i>Pinus taeda</i>															0
<i>Platanus occidentalis</i>															
<i>Prunus serotina</i>															0
<i>Quercus falcata</i>															0
<i>Quercus lyrata</i>															
<i>Quercus nigra</i>															0
<i>Quercus phellos</i>															0
Total for plot														0	

2008 Monitoring Data - Little Contentnea Creek Riparian Buffer Restoration - Phase 2 - Greene County, NC.

Table 50. Plot 15-3.

Species	Average Diameter (cm)	Average Height (cm)	Total Living	Total Dead	Diameter	Height	Diameter	Height	Diameter	Height	Diameter	Height	Diameter	Height	Diameter	Height
<i>Betula nigra</i>			0	0												
<i>Fraxinus pennsylvanica</i>	9.37	498.33	3	0	11.2	510	8.4	485	8.5	500						
<i>Liriodendron tulipifera</i>	5.85	480.00	2	0	5.7	440	6	520								
<i>Platanus occidentalis</i>			0	0												
<i>Quercus alba</i>			0	0												
<i>Quercus falcata</i>			0	0												
<i>Quercus laurifolia</i>			0	0												
<i>Quercus lyrata</i>			0	0												
<i>Quercus michauxii</i>	1.20	165.00	2	0	0.7	78	1.7	252								
<i>Quercus nigra</i>			0	0												
<i>Quercus pagoda</i>			0	0												
<i>Quercus phellos</i>	1.75	231.00	2	0	0.5	172	3	290								
<i>Quercus rubra</i>			0	0												
<i>Taxodium distichum</i>			0	0												
			9	0	Total planted stems per plot											
			364.23		Total planted stems per acre											

2008 Monitoring Data - Little Contentnea Creek Riparian Buffer Restoration - Phase 2 - Greene County, NC.

Table 50. Plot 15-3.

Natural Woody stems	SEEDLING HT CLASS			SAPLINGS DBH			TREES - DBH							Total	
	10-50cm	50-100cm	100-137cm	0-1 cm	1-2.5 cm	2.5	5	10	15	20	25	30	35		40
<i>Acer rubrum</i>															0
<i>Baccharis halimifolia</i>															0
<i>Carpinus caroliniana</i>															
<i>Carya spp</i>															0
<i>Diospyrus virginiana</i>															0
<i>Fraxinus pennsylvania</i>															
<i>Ligustrum sinensis</i>															0
<i>Liquidambar styraciflua</i>															0
<i>Morella cerifera</i>															0
<i>Sambucus canadensis</i>															0
<i>Pinus taeda</i>															0
<i>Platanus occidentalis</i>															
<i>Prunus serotina</i>															0
<i>Quercus falcata</i>															0
<i>Quercus lyrata</i>															
<i>Quercus nigra</i>															0
<i>Quercus phellos</i>															0
Total for plot														0	

2008 Monitoring Data - Little Contentnea Creek Riparian Buffer Restoration - Phase 2 - Greene County, NC.

Table 51. Plot 15-4.

Species	Average Diameter (cm)	Average Height (cm)	Total Living	Total Dead	Diameter	Height	Diameter	Height	Diameter	Height	Diameter	Height	Diameter	Height	Diameter	Height
<i>Betula nigra</i>			0	0												
<i>Fraxinus pennsylvanica</i>			0	0												
<i>Liriodendron tulipifera</i>			0	0												
<i>Platanus occidentalis</i>			0	0												
<i>Quercus alba</i>			0	0												
<i>Quercus falcata</i>	1.00	59.00	1	0	1	59										
<i>Quercus laurifolia</i>			0	0												
<i>Quercus lyrata</i>			0	0												
<i>Quercus michauxii</i>			0	0												
<i>Quercus nigra</i>			0	0												
<i>Quercus pagoda</i>			0	0												
<i>Quercus phellos</i>			0	0												
<i>Quercus rubra</i>			0	0												
<i>Taxodium distichum</i>	0.63	163.75	4	0	0.5	151	0.7	169	0.4	157	0.9	178				
			5	0	Total planted stems per plot											
			202.35		Total planted stems per acre											

2008 Monitoring Data - Little Contentnea Creek Riparian Buffer Restoration - Phase 2 - Greene County, NC.

Table 51. Plot 15-4.

Natural Woody stems	SEEDLING HT CLASS			SAPLINGS DBH		TREES - DBH								Total	
	10-50cm	50-100cm	100-137cm	0-1 cm	1-2.5 cm	2.5	5	10	15	20	25	30	35		40
<i>Acer rubrum</i>			2	1	1										4
<i>Baccharis halimifolia</i>															0
<i>Carpinus caroliniana</i>															
<i>Carya spp</i>															0
<i>Diospyrus virginiana</i>															0
<i>Fraxinus pennsylvania</i>															
<i>Ligustrum sinensis</i>															0
<i>Liquidambar styraciflua</i>															0
<i>Morella cerifera</i>															0
<i>Sambucus canadensis</i>															0
<i>Pinus taeda</i>				1											1
<i>Platanus occidentalis</i>															
<i>Prunus serotina</i>															0
<i>Quercus falcata</i>															0
<i>Quercus lyrata</i>															
<i>Quercus nigra</i>															0
<i>Quercus phellos</i>															0

Total for plot 5

2008 Monitoring Data - Little Contentnea Creek Riparian Buffer Restoration - Phase 2 - Greene County, NC.

Table 52. Plot 16-1.

Natural Woody stems	SEEDLING HT CLASS			SAPLINGS DBH			TREES - DBH							Total	
	10-50cm	50-100cm	100-137cm	0-1 cm	1-2.5 cm	2.5	5	10	15	20	25	30	35		40
<i>Acer rubrum</i>															0
<i>Baccharis halimifolia</i>															0
<i>Carpinus caroliniana</i>															
<i>Carya spp</i>															0
<i>Diospyrus virginiana</i>															0
<i>Fraxinus pennsylvania</i>			3												3
<i>Ligustrum sinensis</i>															0
<i>Liquidambar styraciflua</i>															0
<i>Morella cerifera</i>															0
<i>Sambucus canadensis</i>															0
<i>Pinus taeda</i>															0
<i>Platanus occidentalis</i>															
<i>Prunus serotina</i>															0
<i>Quercus falcata</i>															0
<i>Quercus lyrata</i>															
<i>Quercus nigra</i>															0
<i>Quercus phellos</i>															0
Total for plot														3	

2008 Monitoring Data - Little Contentnea Creek Riparian Buffer Restoration - Phase 2 - Greene County, NC.

Table 53. Plot 16-2.

Species	Average Diameter (cm)	Average Height (cm)	Total Living	Total Dead	Diameter	Height	Diameter	Height	Diameter	Height	Diameter	Height	Diameter	Height	Diameter	Height
<i>Betula nigra</i>			0	0												
<i>Fraxinus pennsylvanica</i>	0.93	64.00	4	0	1.2	66	1.4	75	0.8	53	0.3	62				
<i>Liriodendron tulipifera</i>			0	0												
<i>Platanus occidentalis</i>	1.97	122.00	3	0	1.7	112	2.7	133	1.5	121						
<i>Quercus alba</i>			0	0												
<i>Quercus falcata</i>	1.20	77.00	1	0	1.2	77										
<i>Quercus laurifolia</i>			0	0												
<i>Quercus lyrata</i>	#DIV/0!	#DIV/0!	0	0												
<i>Quercus michauxii</i>			0	0												
<i>Quercus nigra</i>			0	0												
<i>Quercus pagoda</i>			0	0												
<i>Quercus phellos</i>			0	0												
<i>Quercus rubra</i>	1.00	77.00	1	0	1	77										
<i>Taxodium distichum</i>			0	0												
			9	0	Total planted stems per plot											
			364.23		Total planted stems per acre											

2008 Monitoring Data - Little Contentnea Creek Riparian Buffer Restoration - Phase 2 - Greene County, NC.

Table 53. Plot 16-2.

Natural Woody stems	SEEDLING HT CLASS			SAPLINGS DBH			TREES - DBH							Total	
	10-50cm	50-100cm	100-137cm	0-1 cm	1-2.5 cm	2.5	5	10	15	20	25	30	35		40
<i>Acer rubrum</i>															0
<i>Baccharis halimifolia</i>															0
<i>Carpinus caroliniana</i>															
<i>Carya spp</i>															0
<i>Diospyrus virginiana</i>															0
<i>Fraxinus pennsylvanica</i>			1												1
<i>Ligustrum sinensis</i>															0
<i>Liquidambar styraciflua</i>															0
<i>Morella cerifera</i>															0
<i>Sambucus canadensis</i>															0
<i>Pinus taeda</i>															0
<i>Platanus occidentalis</i>															
<i>Prunus serotina</i>															0
<i>Quercus falcata</i>															0
<i>Quercus lyrata</i>															
<i>Quercus nigra</i>															0
<i>Quercus phellos</i>															0
Total for plot														1	

2008 Monitoring Data - Little Contentnea Creek Riparian Buffer Restoration - Phase 2 - Greene County, NC.

Table 54. Plot 16-3.

Species	Average Diameter (cm)	Average Height (cm)	Total Living	Total Dead	Diameter	Height	Diameter	Height	Diameter	Height	Diameter	Height	Diameter	Height	Diameter	Height
<i>Betula nigra</i>			0	0												
<i>Fraxinus pennsylvanica</i>	2.40	171.67	3	0	1	55	2.9	325	3.3	135						
<i>Liriodendron tulipifera</i>			0	0												
<i>Platanus occidentalis</i>			0	0												
<i>Quercus alba</i>			0	0												
<i>Quercus falcata</i>			0	0												
<i>Quercus laurifolia</i>			0	0												
<i>Quercus lyrata</i>			0	0												
<i>Quercus michauxii</i>			0	0												
<i>Quercus nigra</i>			0	0												
<i>Quercus pagoda</i>			0	0												
<i>Quercus phellos</i>			0	0												
<i>Quercus rubra</i>	1.10	54.67	3	0	1.3	77	1.5	58	0.5	29						
<i>Taxodium distichum</i>			0	0												
			6	0	Total planted stems per plot											
			242.82		Total planted stems per acre											

2008 Monitoring Data - Little Contentnea Creek Riparian Buffer Restoration - Phase 2 - Greene County, NC.

Table 54. Plot 16-3.

Natural Woody stems	SEEDLING HT CLASS			SAPLINGS DBH			TREES - DBH							Total	
	10-50cm	50-100cm	100-137cm	0-1 cm	1-2.5 cm	2.5	5	10	15	20	25	30	35		40
<i>Acer rubrum</i>															0
<i>Baccharis halimifolia</i>															0
<i>Carpinus caroliniana</i>															
<i>Carya spp</i>															0
<i>Diospyrus virginiana</i>															0
<i>Fraxinus pennsylvania</i>															
<i>Ligustrum sinensis</i>															0
<i>Liquidambar styraciflua</i>															0
<i>Morella cerifera</i>															0
<i>Sambucus canadensis</i>															0
<i>Pinus taeda</i>															0
<i>Platanus occidentalis</i>															
<i>Prunus serotina</i>															0
<i>Quercus falcata</i>															0
<i>Quercus lyrata</i>															
<i>Quercus nigra</i>															0
<i>Quercus phellos</i>															0
Total for plot														0	