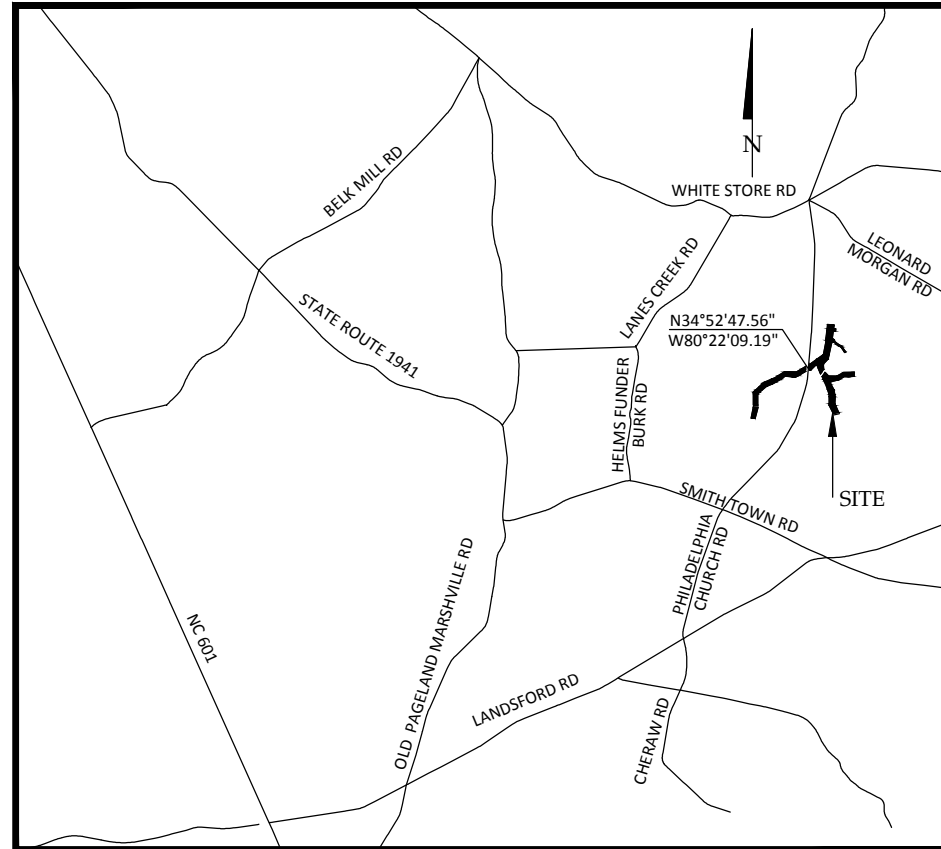


C:\Ardor\Projects\015\0134_Norkett Branch EPP\Monitoring\Baseline\Monitoring\Plans\Monitoring\Plans\0134\MON-CoverNotes.dwg July 11, 2014

Norkett Branch Stream Mitigation Site

Yadkin River Basin 03040105
Union County, North Carolina

for
North Carolina Ecosystem
Enhancement Program



Vicinity Map
Not to Scale



BEFORE YOU DIG!
CALL 1-800-632-4949
N.C. ONE-CALL CENTER
IT'S THE LAW!

**BASELINE DRAWINGS
ISSUED JULY 15, 2014**

Site Directions:

From Charlotte take US-74 E.
Turn Right onto US 601 S.
Turn Left onto Landsford Rd.
Turn Right onto Philadelphia Church Rd.
Norkett Branch, UT1, UT3 and BMPs are on the right. UT2 and UT2A are on the left.

Sheet Index

Title Sheet	0.1
General Notes and Symbols	0.2
Project Overview	1.0
Norkett Branch, UT3, BMPS	1.1-1.4
UT1	1.5
UT2	1.6-1.9
UT2A	1.10

Project Directory

Engineering:
Wildlands Engineering, Inc
License No. F-0831
1430 South Mint Street
Suite 104
Charlotte, NC 28203
Emily G. Reinicker, PE
704-332-7754

Surveying:
Kee Mapping and Survey
111 Central Avenue,
Asheville, NC 28801
Brad Kee, PLS
828-645-8275

Owner:
Ecosystem Enhancement Program
NC Department of Environment and
Natural Resources
1652 Mail Service Center
Raleigh, North Carolina 27699-1652

EEP Project ID: 95360

DENR Contract No. 004673

Norkett Branch Stream Mitigation Site
Union County, North Carolina

Title Sheet
Baseline Drawings

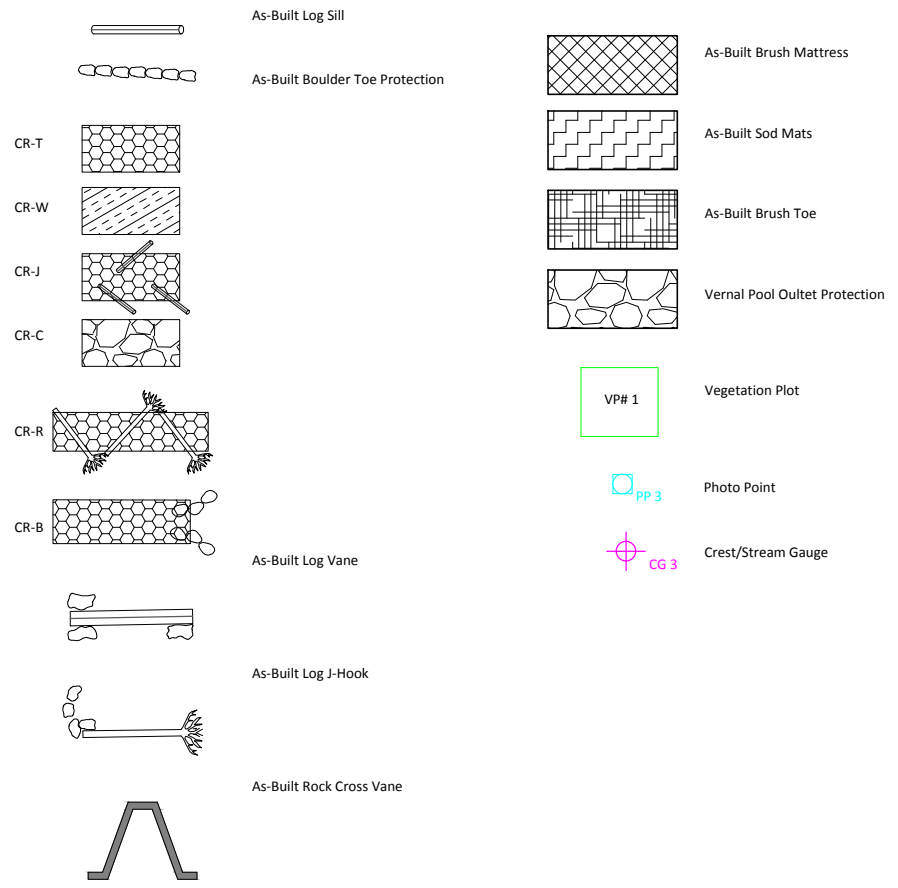
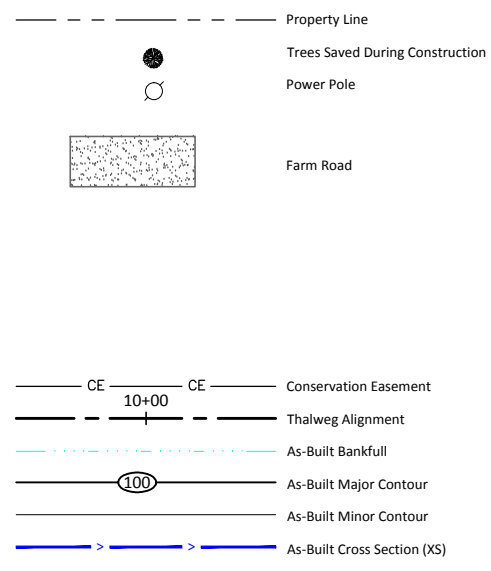
Revisions:

Date:	July 15, 2014
Job Number:	005-02134
Project Engineer:	EGR
Drawn By:	JCK
Checked By:	KYG

0.1

Sheet

WILDLANDS
ENGINEERING
1430 S. MINT STREET, SUITE 104
CHARLOTTE, NC 28203
Tel: 704.332.7754
Fax: 704.332.3306
Firm License No. F-0831



Norkett Branch Stream Mitigation Site
 Union County, North Carolina
 General Notes and Symbols
 Baseline Drawings

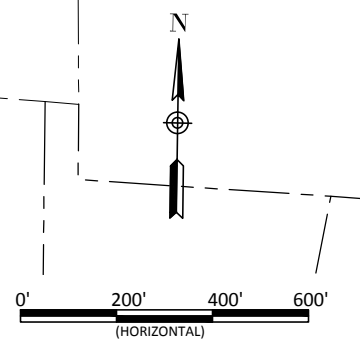
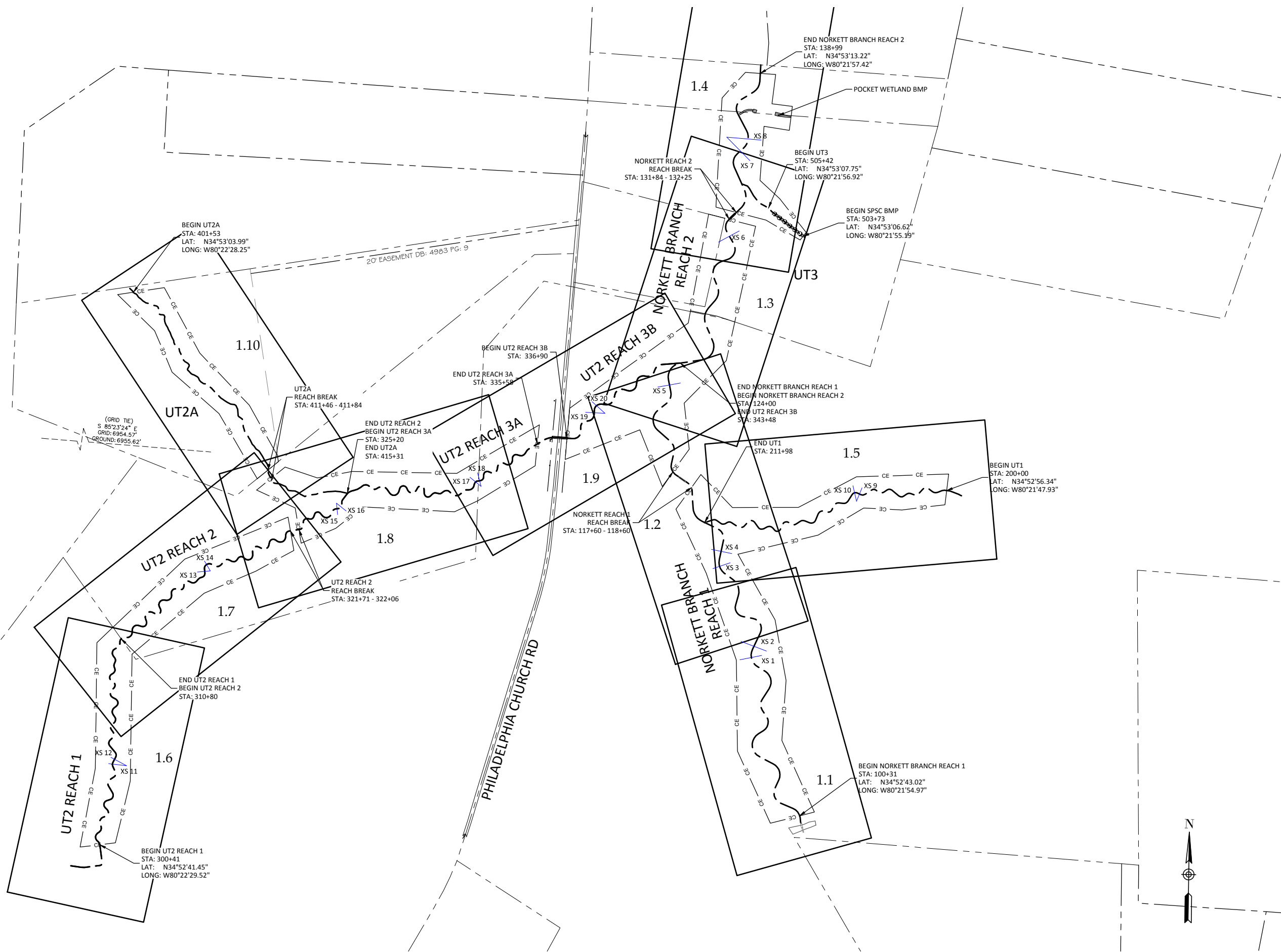
WILDLANDS
 ENGINEERING
 14705 WILDLANDS DRIVE
 CHARLOTTE, NC 28213
 Tel: 704.332.7754
 Fax: 704.332.3306
 Firm License No. F-0831

Date: July 15, 2014
 Job Number: 005-02134
 Project Engineer: EGR
 Drawn By: JCK
 Checked By: KYG

Revisions:

0.2

C:\Aerial\Project\005-00134-Norkett Branch EDP\Monitoring\Baseline\Monitoring Plans\UT2\14.MON.Overview.dwg July 11, 2014



**Norkett Branch Stream Mitigation Site
Union County, North Carolina**

Project Overview
Baseline Drawings

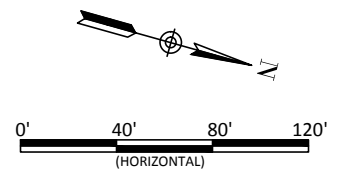
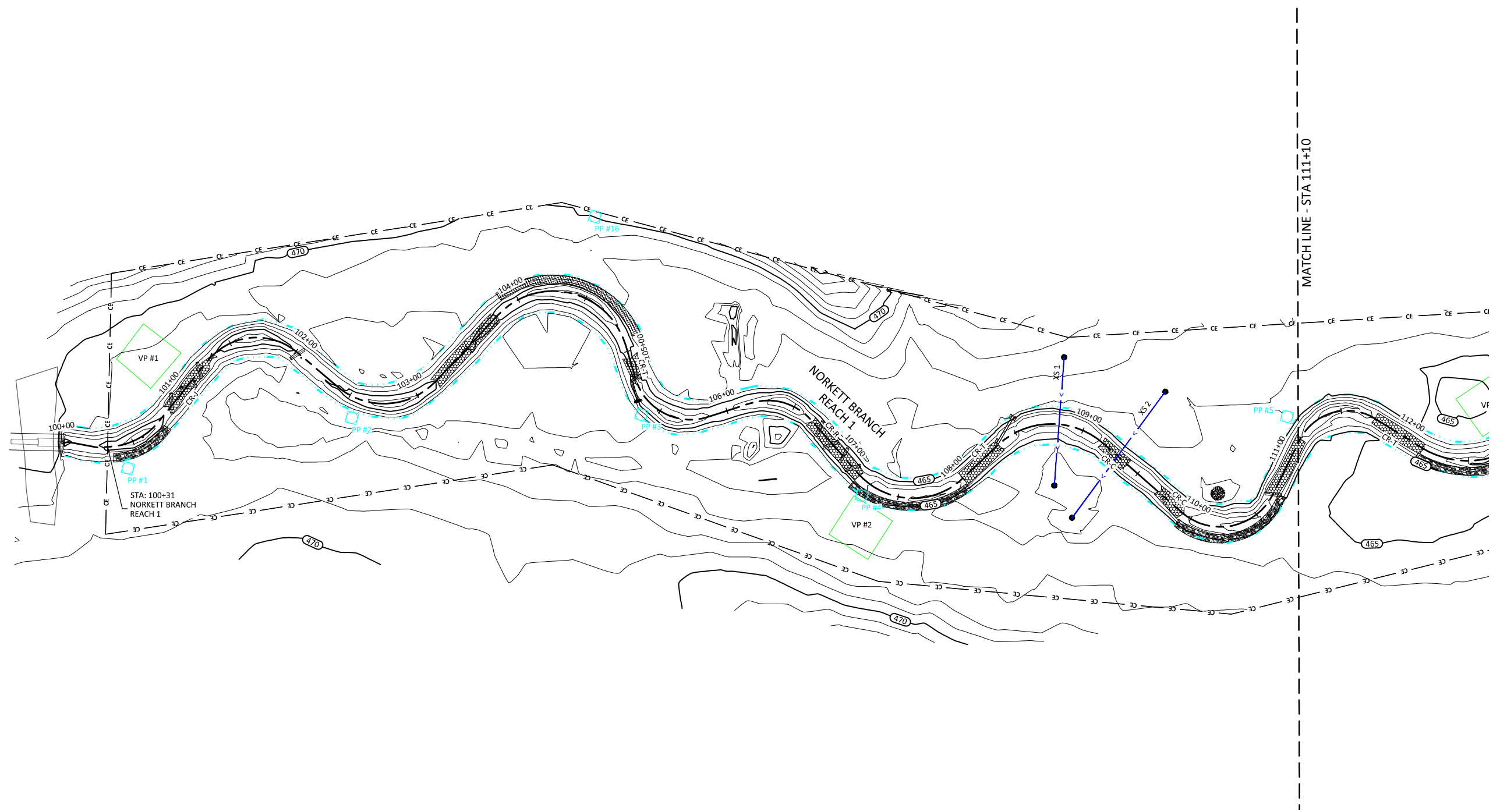
Date:	July 15, 2014
Job Number:	005-02134
Project Engineer:	EGR
Drawn By:	JCK
Checked By:	KYG

1.0

Sheet

WILDLANDS
ENGINEERING
14705 WILDLANDS DRIVE
GREENSBORO, NC 27409
Tel: 704.332.7754
Fax: 704.332.3306
Firm License No. F-0831

C:\A\Arch\Project\005-00134_Norkett_Branch_EPA_Monitoring_Baseline_Monitoring_Plans\02134.MON.Plans.dwg
 July 11, 2014



Norkett Branch Stream Mitigation Site
Union County, North Carolina


Norkett Reach 1
 Baseline Drawings

Revisions

Date:	July 15, 2014
Job Number:	005-02134
Project Engineer:	EGR
Drawn By:	JCK
Checked By:	KYG

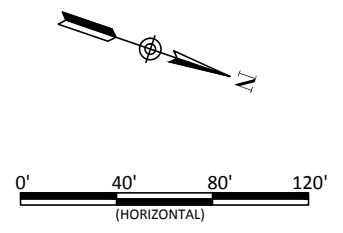
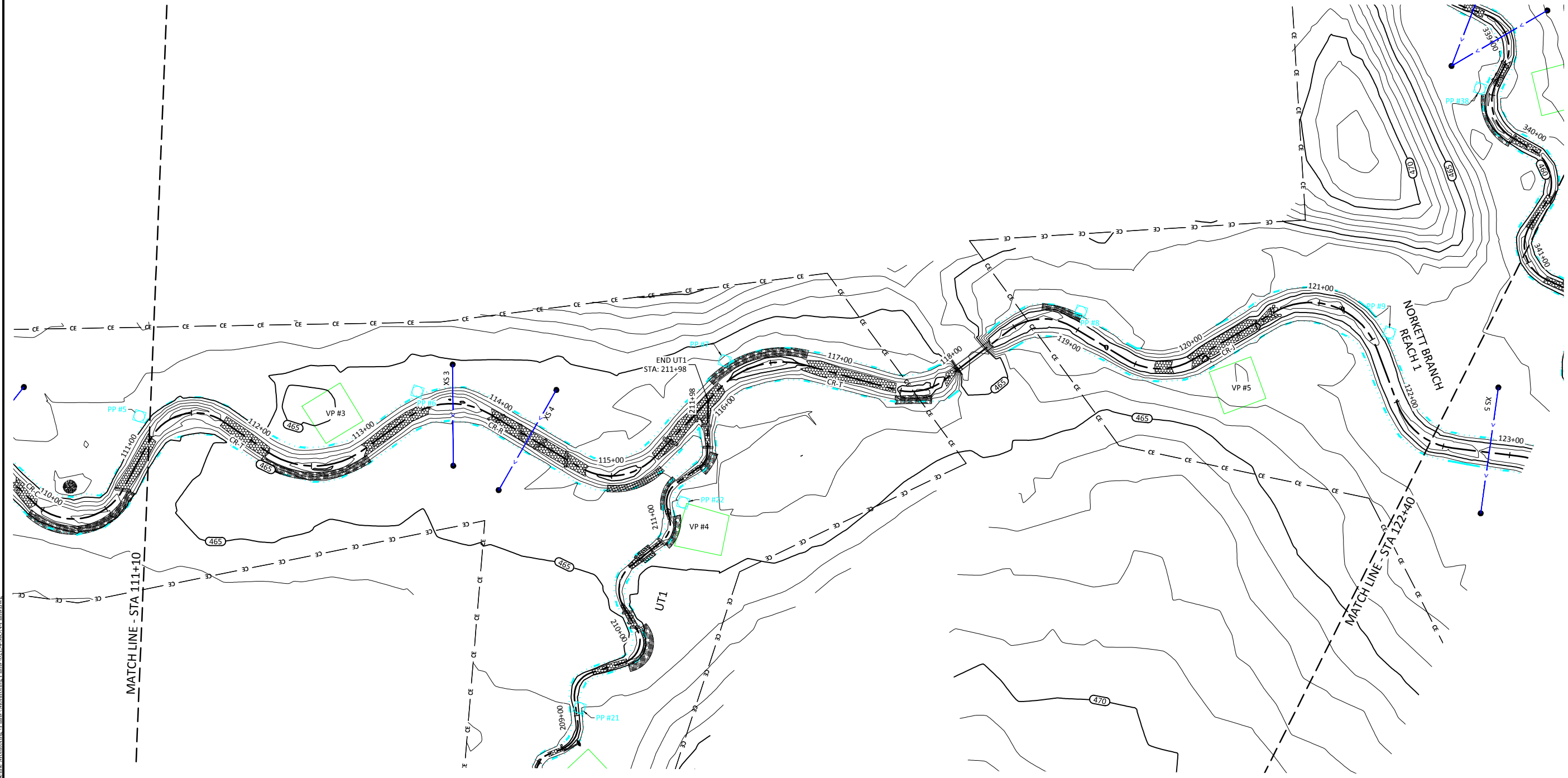
1.1

Sheet



WILDLANDS
 ENGINEERING
 14705 WILDLANDS DRIVE
 SUITE 104
 CHARLOTTE, NC 28213
 Tel: 704.332.7754
 Fax: 704.332.3306
 Firm License No. F-0831

C:\Active\Projects\005-00134\Norkett Branch EDP\Monitoring\Baseline\Monitoring Plans\02134.MON\Plans.dwg July 11, 2014



Norkett Branch Stream Mitigation Site
Union County, North Carolina

Norkett Reach 1
 Baseline Drawings

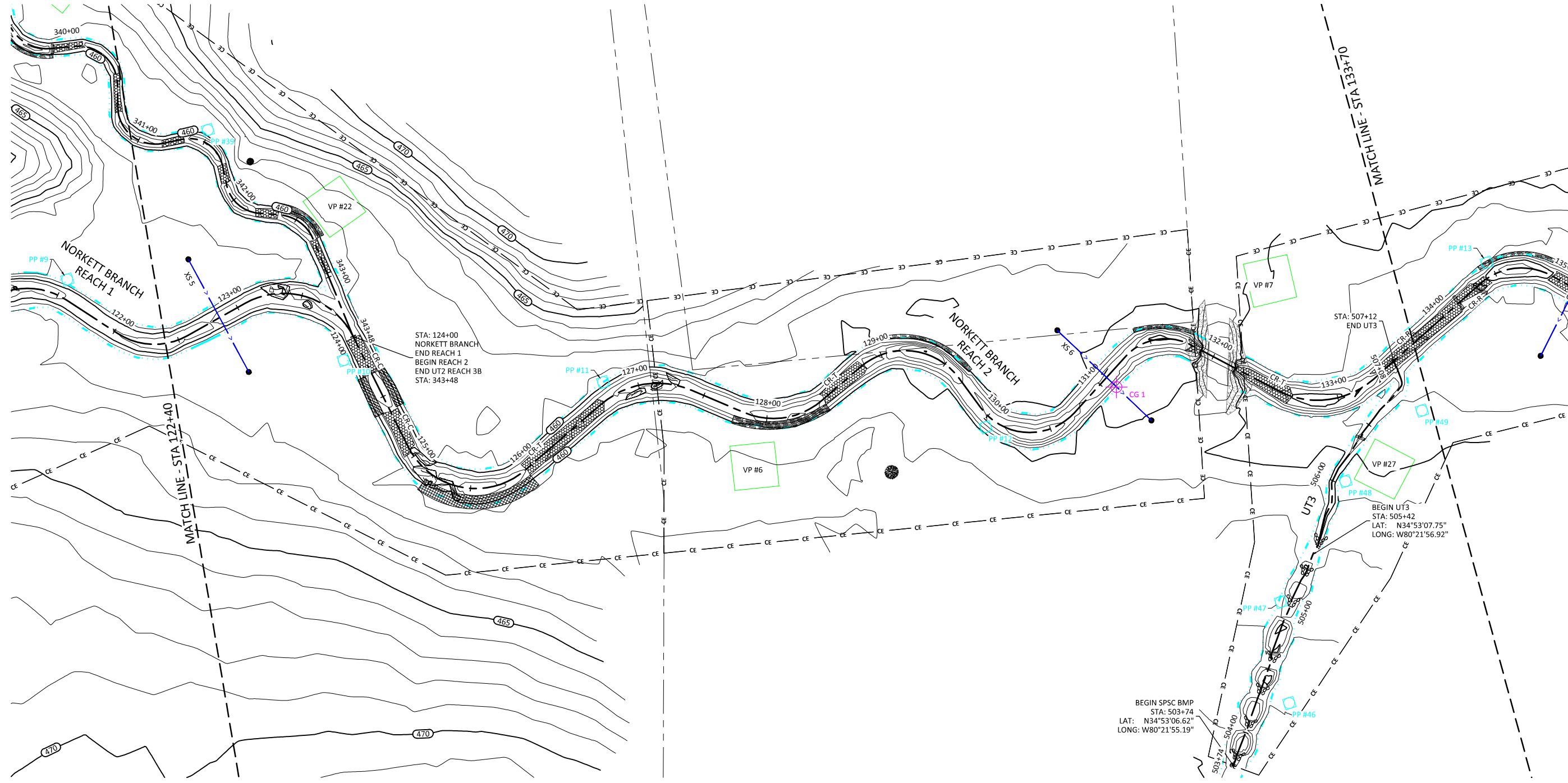
Date:	July 15, 2014
Job Number:	005-02134
Project Engineer:	EGR
Drawn By:	JCK
Checked By:	KYG

1.2

Sheet

Revisions:

WILDLANDS
 ENGINEERING
 14705 WILDLANDS DRIVE
 CHARLOTTE, NC 28203
 Tel: 704.332.7754
 Fax: 704.332.3306
 Firm License No. F-0831



Norkett Branch Stream Mitigation Site
 Union County, North Carolina

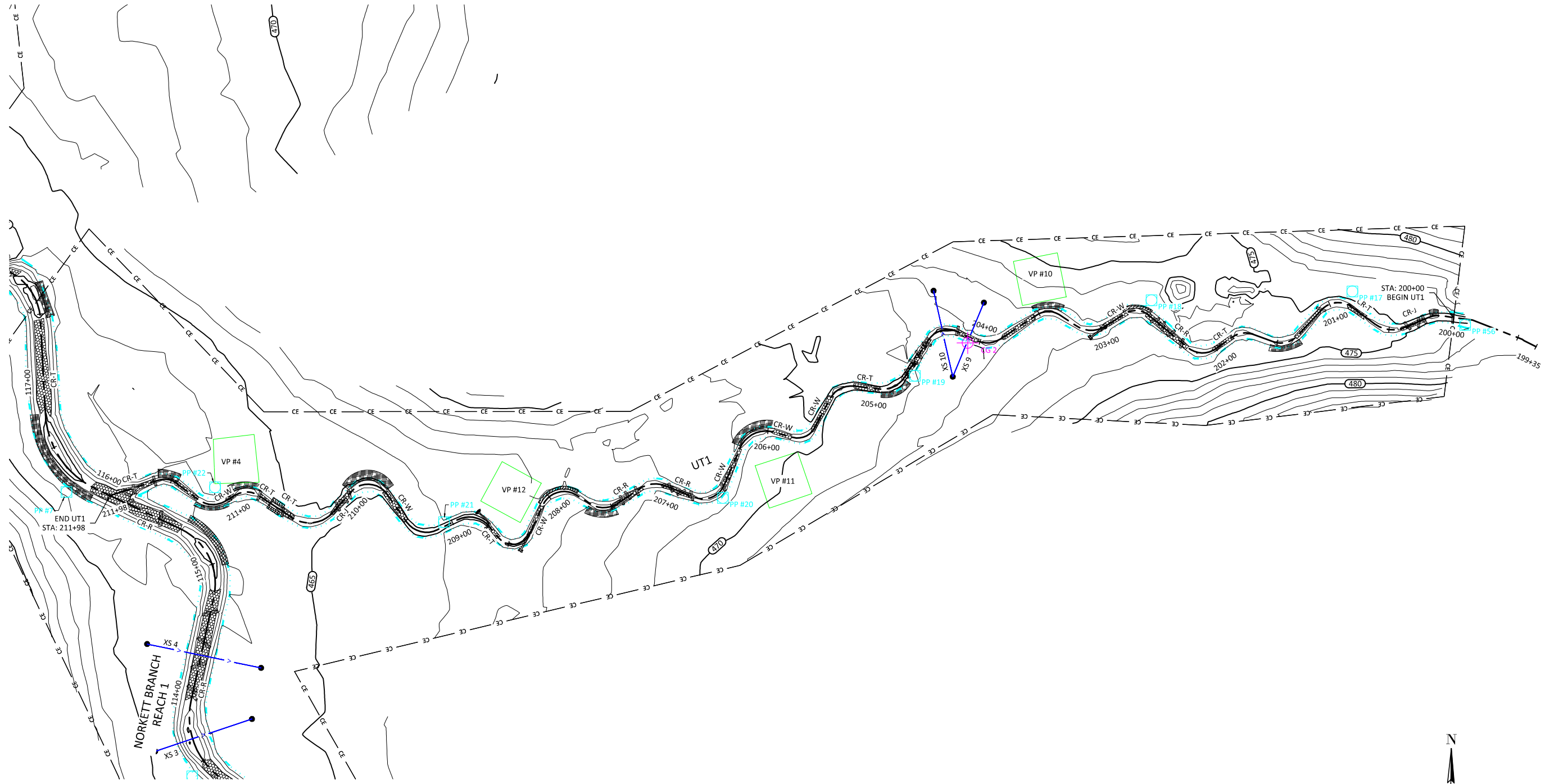
Norkett Reach 1 & 2
 Baseline Drawings

Revisions:

Date: July 15, 2014
 Job Number: 005-02134
 Project Engineer: EGR
 Drawn By: JCK
 Checked By: KYG

1.3

C:\Active\Projects\1005-00134\Norkett Branch\EPDMonitoring\Baseline\Monitoring Plans\02134 MON Plans.dwg
 July 11, 2014



Norkett Branch Stream Mitigation Site
Union County, North Carolina
 UT1
 Baseline Drawings

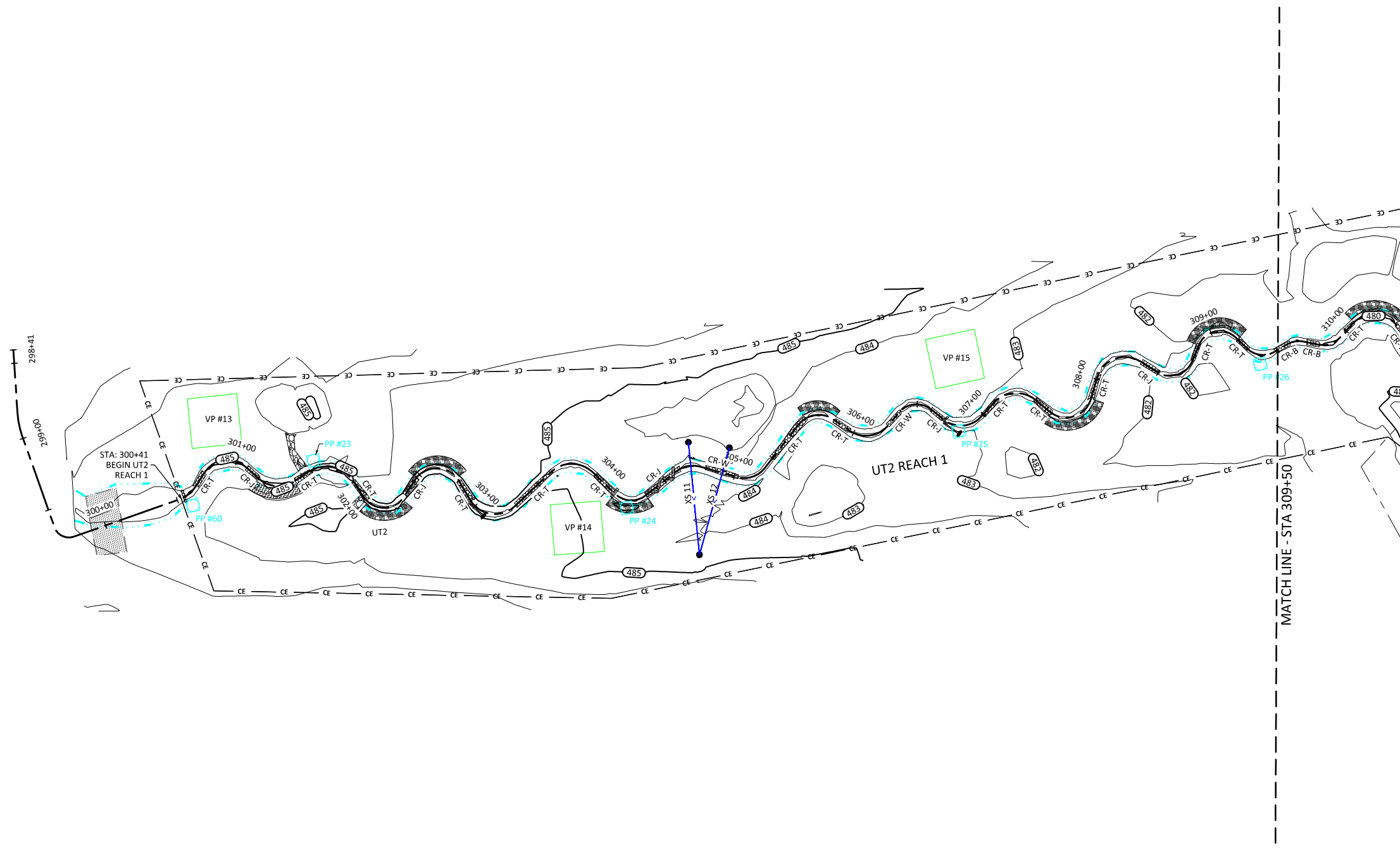
Date: July 15, 2014
 Job Number: 1005-00134
 Project Engineer: EGR
 Drawn By: JCK
 Checked By: KYG

1.5

Sheet

WILDLANDS
 ENGINEERING
 1405 WILDLANDS DRIVE
 WILMINGTON, NC 28403
 Tel: 704.332.7754
 Fax: 704.332.3306
 Firm License No. F-0831

Revisions



Norkett Branch Stream Mitigation Site
 Union County, North Carolina

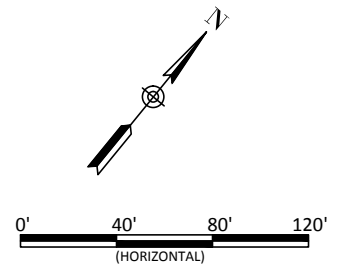
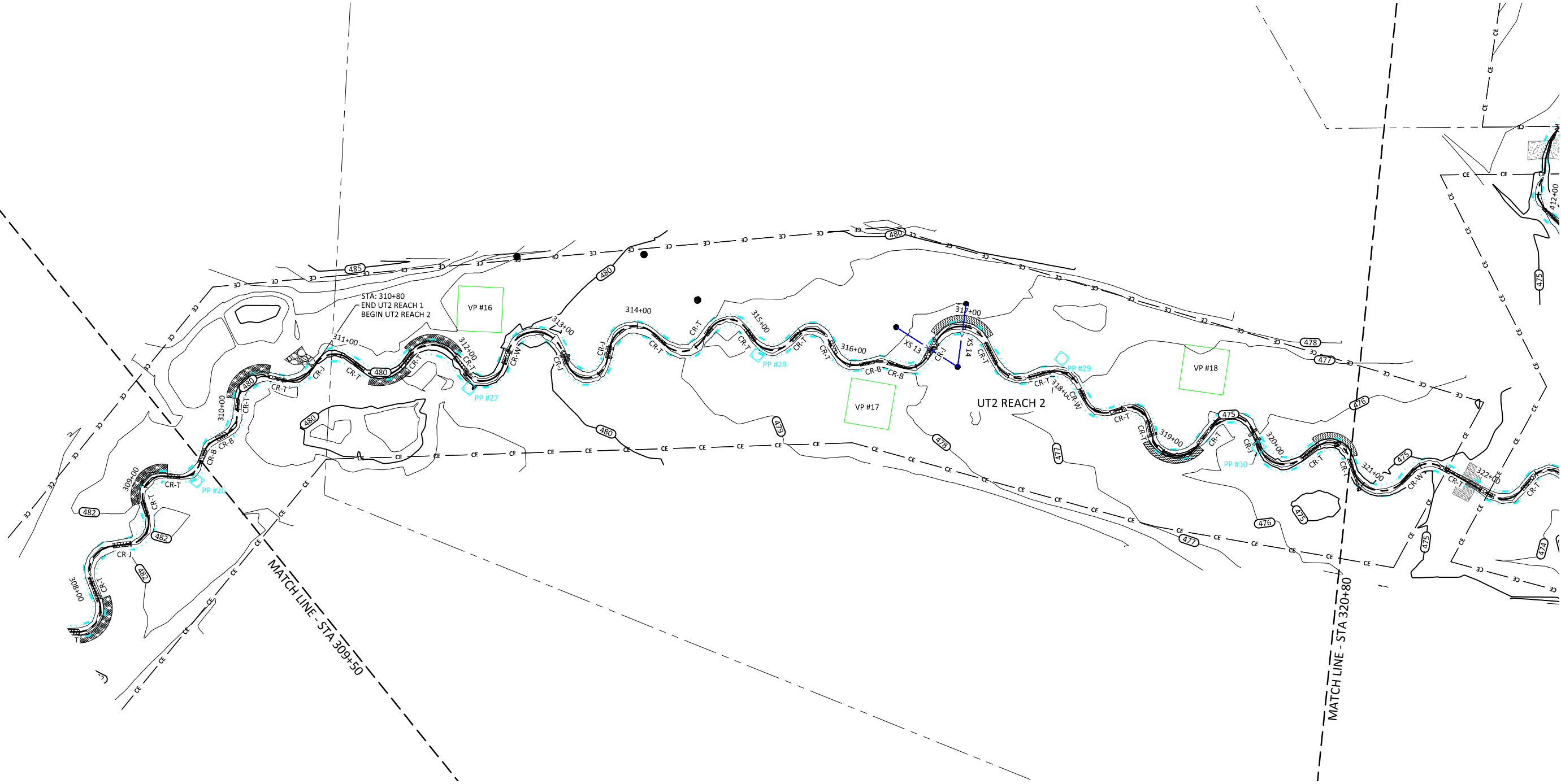
UT2 Reach 1
 Baseline Drawings

Revisions

Date: July 15, 2014
 Job Number: 005-02134
 Project Engineer: EGR
 Drawn By: JCK
 Checked By: KYG

1.6

Sheet



Norkett Branch Stream Mitigation Site
 Union County, North Carolina

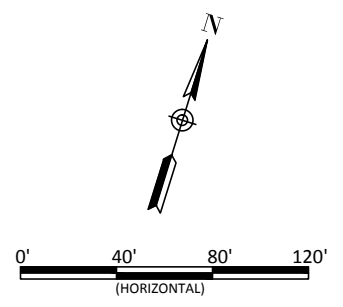
UT2 Reach 1 & 2
 Baseline Drawings

Revisions:

Date: July 15, 2014
 Job Number: 005-02134
 Project Engineer: EGR
 Drawn By: JCK
 Checked By: KYG

1.7

C:\Active\Projects\1005-00134\Norkett Branch\EPDM\Monitoring\Baseline\Monitoring\Plans\UT2\14.MON\Plans.dwg July 11, 2014



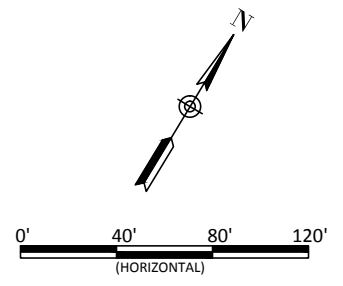
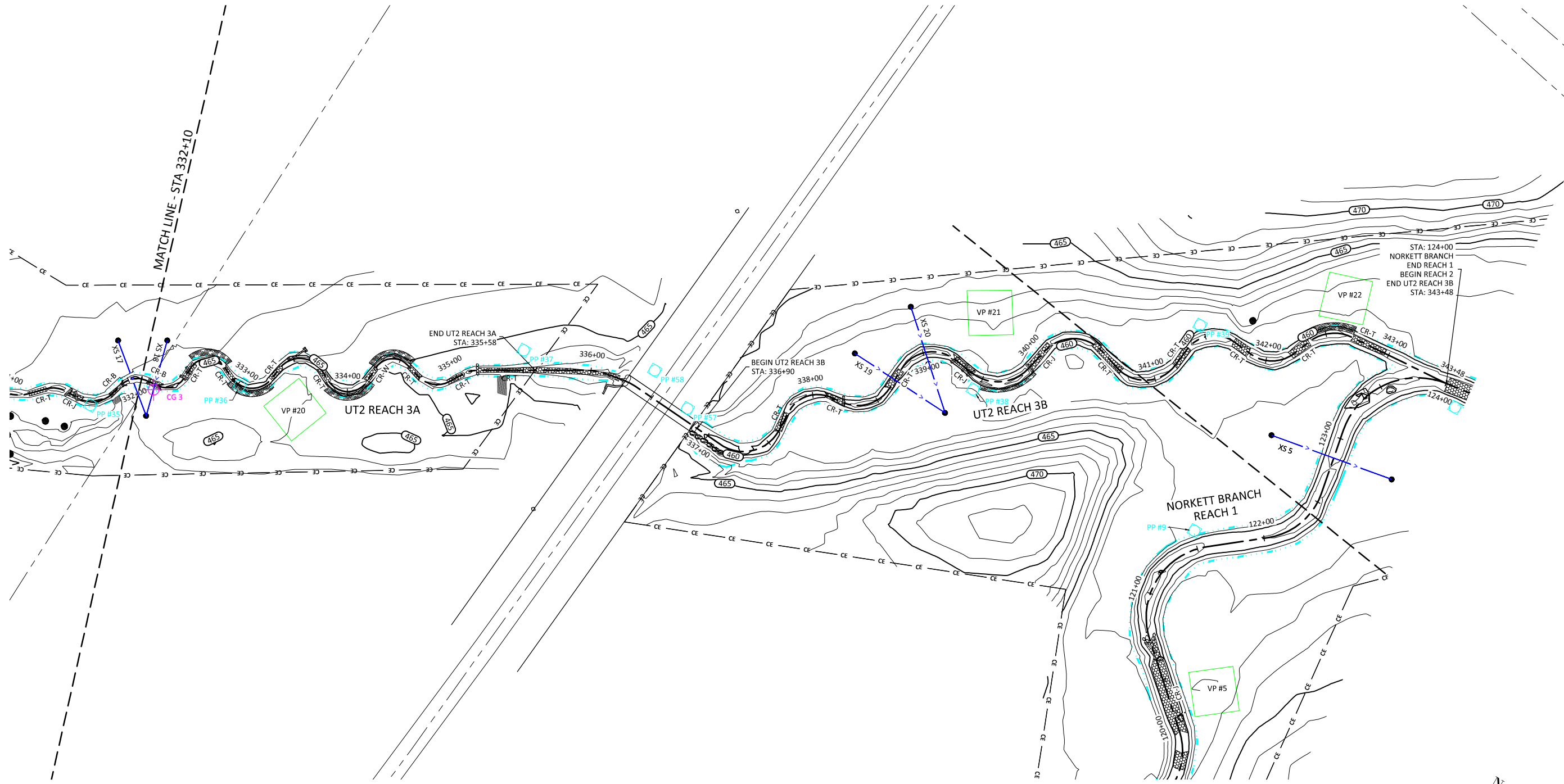
Norkett Branch Stream Mitigation Site
Union County, North Carolina
UT2 Reach 2 & Reach 3A
Baseline Drawings

Date: July 15, 2014
Job Number: 1005-00134
Project Engineer: EGR
Drawn By: JCK
Checked By: KYG

1.8

Sheet

C:\A\Arch\Drawings\005-02134\Norkett Branch\EPDM\Monitoring\Baseline\Monitoring Plans\02134.MON\Plans.dwg July 11, 2014



Norkett Branch Stream Mitigation Site
 Union County, North Carolina

UT2 Reach 3A & 3B
 Baseline Drawings

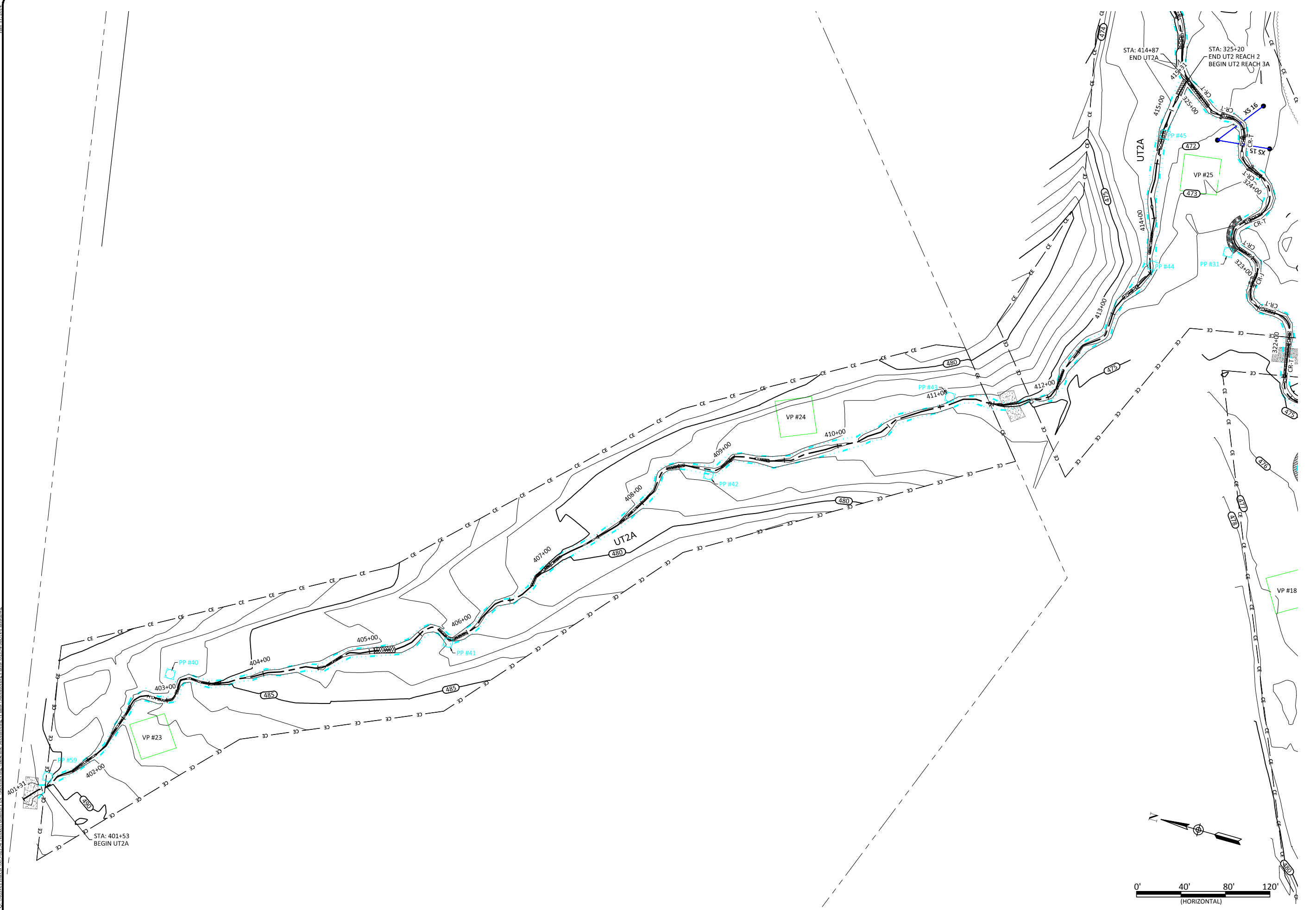
Revisions

Date: July 15, 2014
 Job Number: 005-02134
 Project Engineer: EGR
 Drawn By: JCK
 Checked By: KYG

1.9

Sheet

C:\Aarth\Projects\005-02134\Norkett Branch\EPDM\Monitoring\Baseline\Monitoring Plans\02134.MON.Plan.dwg July 11, 2014



Norkett Branch Stream Mitigation Site
Union County, North Carolina

UT2A
Baseline Drawings

Revisions	

Date: July 15, 2014
Job Number: 005-02134
Project Engineer: EGR
Drawn By: JCK
Checked By: KYG

1.10

Sheet

WILDLANDS
ENGINEERING
14705 WILDLANDS BLVD
GREENSBORO, NC 27409
Tel: 704.332.7754
Fax: 704.332.3306
Firm License No. F-0831