

STATE	STATE PROJECT REFERENCE NO.	SHEET NO.	TOTAL SHEETS
N.C.	05-0649301	1	

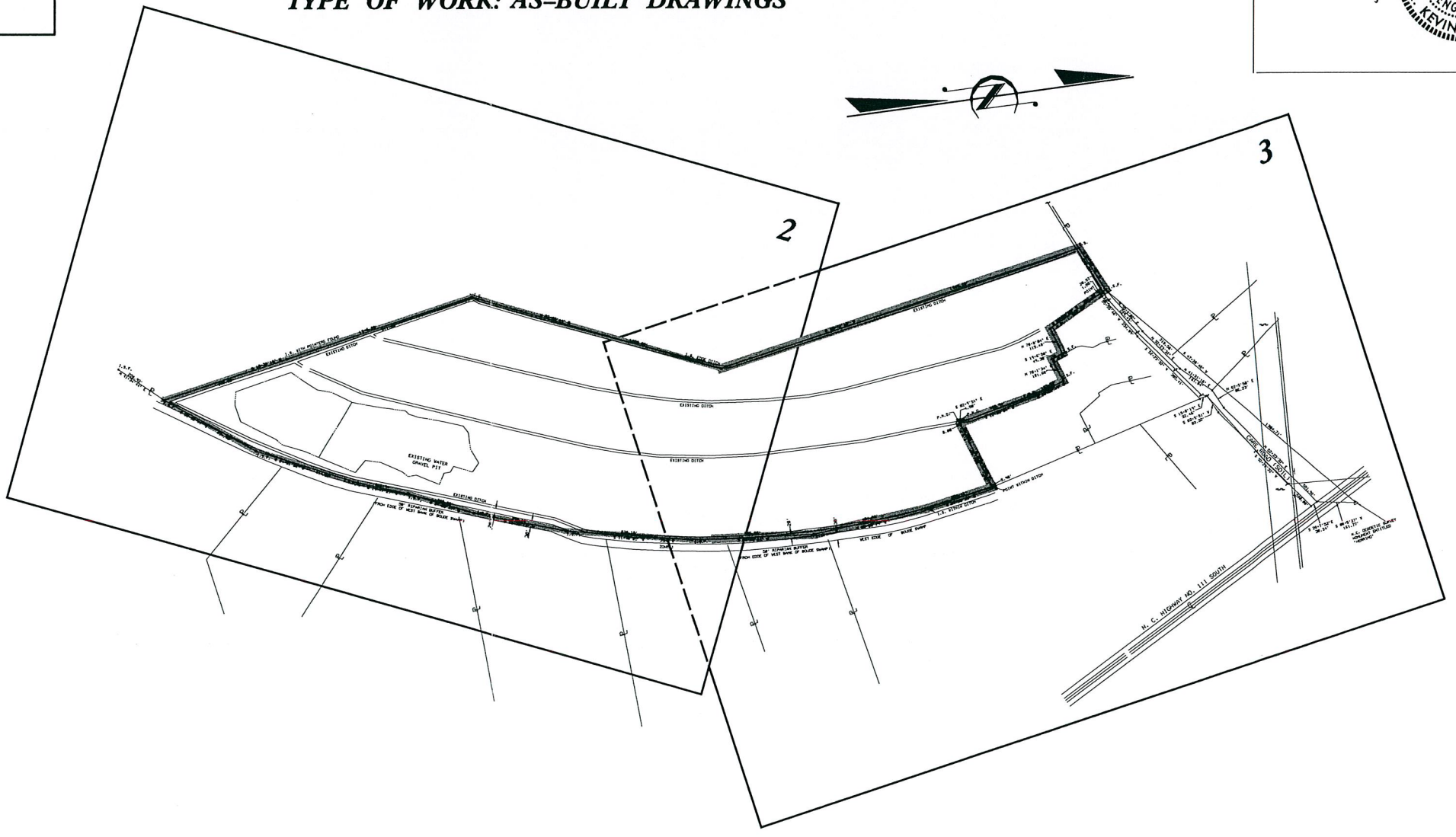
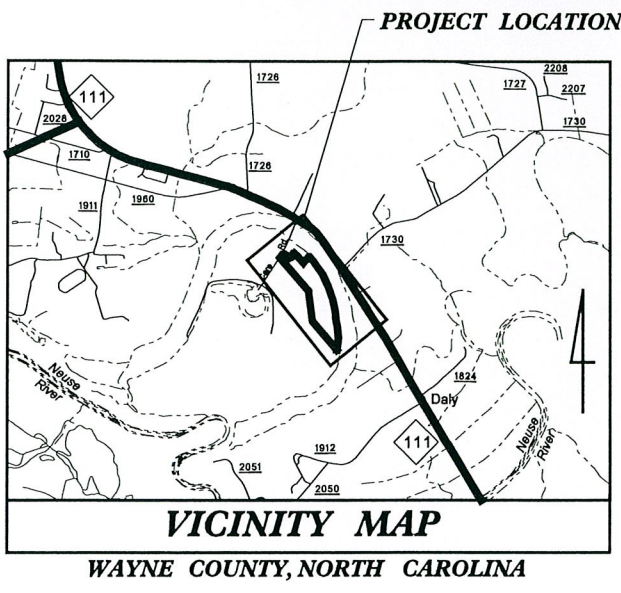
AS BUILT
 This record drawing has been prepared in part, based upon information furnished by others. While this information is believed to be reliable, the Engineer cannot assure its accuracy, and thus is not responsible for the accuracy of this record drawing or for any errors or omissions which may have been incorporated into it as a result. Those relying on this record document are advised to obtain independent verification of its accuracy before applying for any purpose.



STATE OF NORTH CAROLINA
 NC ECOSYSTEM ENHANCEMENT PROGRAM

**AS-BUILT PLANS
 NORWOOD GAINNEY
 PROPERTY**

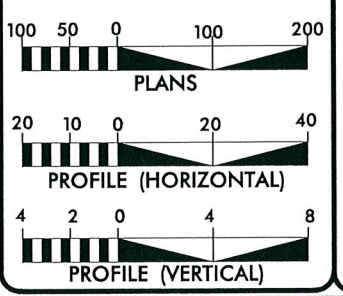
LOCATION: WAYNE COUNTY, NORTH CAROLINA
NORTHING: 561,476.432 EASTING: 2,323,740.352
LATITUDE: 35°17'16.438"N LONGITUDE: 77°54'54.345"W
TYPE OF WORK: AS-BUILT DRAWINGS



INDEX OF SHEETS

TITLE SHEET.....1
 PLAN SHEETS.....2 & 3

GRAPHIC SCALES



PLANTING AREA BREAKDOWN

RIPARIAN BUFFER ZONE 1 - 14.0 ACRES
 RIPARIAN BUFFER ZONE 2 - 7.6 ACRES
 RIPARIAN BUFFER HERBACEOUS ZONE - 26.2 ACRES
 WETLAND ENHANCEMENT AREA - 5.4 ACRES

PROJECT LENGTH

TOTAL PLANTING AREA = 53.2 ACRES

OWNER CONTACT: KRISTIE CORSON
 EEP PROJECT MANAGER

Prepared In the Office of:
KO & ASSOCIATES, P.C.
 Consulting Engineers
 1011 SCHAUB DR., SUITE #202
 RALEIGH, N.C. 27606
 (919) 851-6066
 FAX: (919) 851-6846

LETTING DATE:

DESIGNER
R. KEVIN WILLIAMS, PE
 PROJECT MANAGER

R. KEVIN WILLIAMS, PE
 PROJECT DESIGN ENGINEER

PROJECT DESIGN ENGINEER

SIGNATURE: _____ P.E.

3/26/2007 R:\Construction\As_Built\NORWOOD\hyd_tsh.dgn CONTRACT: 05-0649301 KO & Associates, P.C.

8/17/99
3/26/2007
C:\Users\psh-2\Documents\Projects\Norwood\Buil\ts\norwood_psh-2.dgn

VEG PLOT	LONGITUDE	LATITUDE	NORTHING	EASTING
1	77 54 00.235	35 17 04.362	560250.328	2323265.470
2	77 54 59.864	35 17 05.879	560404.018	2323294.549
3	77 54 58.586	35 17 08.426	560662.653	2323397.671
4	77 54 56.725	35 17 12.962	561122.885	2323546.919
5	77 54 57.509	35 17 13.003	561126.320	2323481.890
6	77 54 55.904	35 17 13.581	561186.203	2323614.286
7	77 54 55.996	35 17 17.885	561621.215	2323601.907
8	77 54 55.572	35 17 18.883	561722.487	2323635.949
9	77 54 54.878	35 17 19.802	561816.018	2323692.457
10	77 54 55.689	35 17 20.717	561907.782	2323624.226
11	77 54 57.306	35 17 24.462	562284.903	2323486.065
12	77 54 56.680	35 17 25.570	562397.478	2323536.727
13	77 54 55.645	35 17 27.477	562591.196	2323620.406
14	77 54 57.347	35 17 28.386	562681.546	2323478.335
15	77 54 58.751	35 17 02.221	560035.235	2323390.842
16	77 54 57.215	35 17 04.180	560234.662	2323516.000
17	77 54 56.886	35 17 05.868	560405.601	2323541.407
18	77 54 57.378	35 17 08.182	560639.080	2323498.070
19	77 54 55.323	35 17 10.346	560859.701	2323666.017
20	77 54 53.722	35 17 11.488	560976.597	2323797.460
21	77 54 54.207	35 17 12.486	561077.046	2323756.157
22	77 54 54.345	35 17 16.438	561476.432	2323740.352
23	77 54 53.421	35 17 19.057	561742.026	2323814.045
24	77 54 52.260	35 17 22.011	562041.700	2323907.010
25	77 54 52.591	35 17 24.590	562302.099	2323876.749
26	77 54 54.740	35 17 26.594	562502.752	2323696.392
27	77 54 54.082	35 17 28.487	562694.713	2323748.838
28	77 54 49.393	35 17 25.083	562354.850	2324141.244
29	77 54 48.492	35 17 24.109	562257.205	2324217.000
30	77 54 50.205	35 17 21.099	561951.368	2324078.348
31	77 54 51.384	35 17 18.723	561710.108	2323983.253
32	77 54 49.252	35 17 17.381	561576.377	2324161.451
33	77 54 49.882	35 17 14.052	561239.274	2324112.915
34	77 54 49.235	35 17 11.763	561008.465	2324169.075
35	77 54 50.506	35 17 10.707	560900.560	2324064.892
36	77 54 51.616	35 17 08.449	560671.291	2323975.383
37	77 54 53.103	35 17 06.321	560454.822	2323854.478
38	77 54 58.504	35 16 55.622	559368.361	2323418.599
39	77 54 53.651	35 17 05.629	560384.370	2323809.820
40	77 54 54.609	35 17 05.512	560371.675	2323730.540
41	77 54 54.990	35 17 05.223	560342.115	2323699.278
42	77 54 55.771	35 17 04.125	560230.410	2323635.754
43	77 54 56.271	35 17 02.434	560059.012	2323596.176
44	77 54 55.670	35 17 01.757	559991.118	2323646.741
45	77 54 54.879	35 17 02.606	560077.661	2323711.370
Norgainey1	77 54 54.964	35 17 02.639	560080.920	2323704.288
Norgainey2	77 54 54.431	35 17 03.993	560218.279	2323746.973

AS-BUILT PLANS

KO & ASSOCIATES, P.C.
 Consulting Engineers
 1011 SCHUBB DR., SUITE 202 RALEIGH, N.C. 27606
 (919) 851-6066

100 0 200
SCALE

PROJECT REFERENCE NO. 05-0649301 SHEET NO. 2

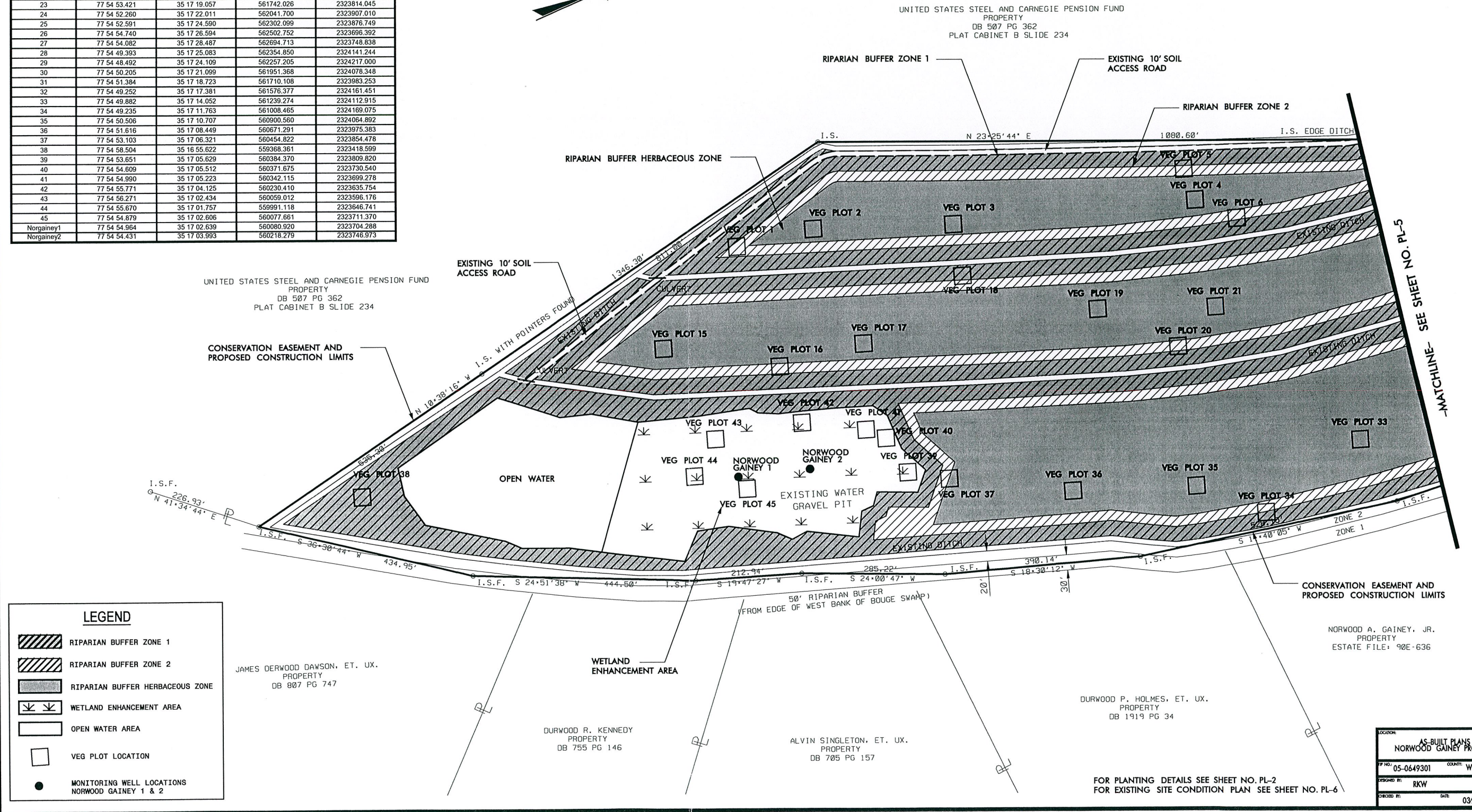
PROJECT ENGINEER

AS BUILT

This record drawing has been prepared in part, based upon information furnished by others. While this information is believed to be reliable, the Engineer cannot assume its accuracy, and thus is not responsible for the accuracy of this record drawing or for any errors or omissions which may have been incorporated into it as a result. Those relying on this record document are advised to obtain independent verification of its accuracy before applying for any purpose.

Professional Engineer Seal
 Kevin Williams
 State of North Carolina
 No. 20253
 Exp. 12/31/07

- NOTE:
- CONTRACTOR SHALL CONTACT THE NORTH CAROLINA ONE-CALL CENTER (800-632-4949) A MINIMUM OF 48 HOURS PRIOR TO BEGINNING CONSTRUCTION ACTIVITIES.
 - TREES SHOULD BE PLANTED AT A DENSITY SUFFICIENT TO PROVIDE 320 TREES PER ACRE AT THE END OF MONITORING. TO ACHIEVE THIS DENSITY, APPROXIMATELY 436 (10x10 SPACING) TO 681 (8x8 SPACING) TREES/ACRE SHOULD BE PLANTED INITIALLY. SHRUBS SHOULD BE PLANTED AT A DENSITY OF (+/-300/ACRE) WITHIN ZONE 2 IN ADDITION TO THE REQUIRED TREE DENSITIES.



LEGEND

- RIPARIAN BUFFER ZONE 1
- RIPARIAN BUFFER ZONE 2
- RIPARIAN BUFFER HERBACEOUS ZONE
- WETLAND ENHANCEMENT AREA
- OPEN WATER AREA
- VEG PLOT LOCATION
- MONITORING WELL LOCATIONS NORWOOD GAINNEY 1 & 2

FOR PLANTING DETAILS SEE SHEET NO. PL-2
 FOR EXISTING SITE CONDITION PLAN SEE SHEET NO. PL-6

LOCATION: AS-BUILT PLANS NORWOOD GAINNEY PROPERTY

PROJECT NO.: 05-0649301 COUNTY: WAYNE

DESIGNED BY: RKW

DATE: 03/26/07

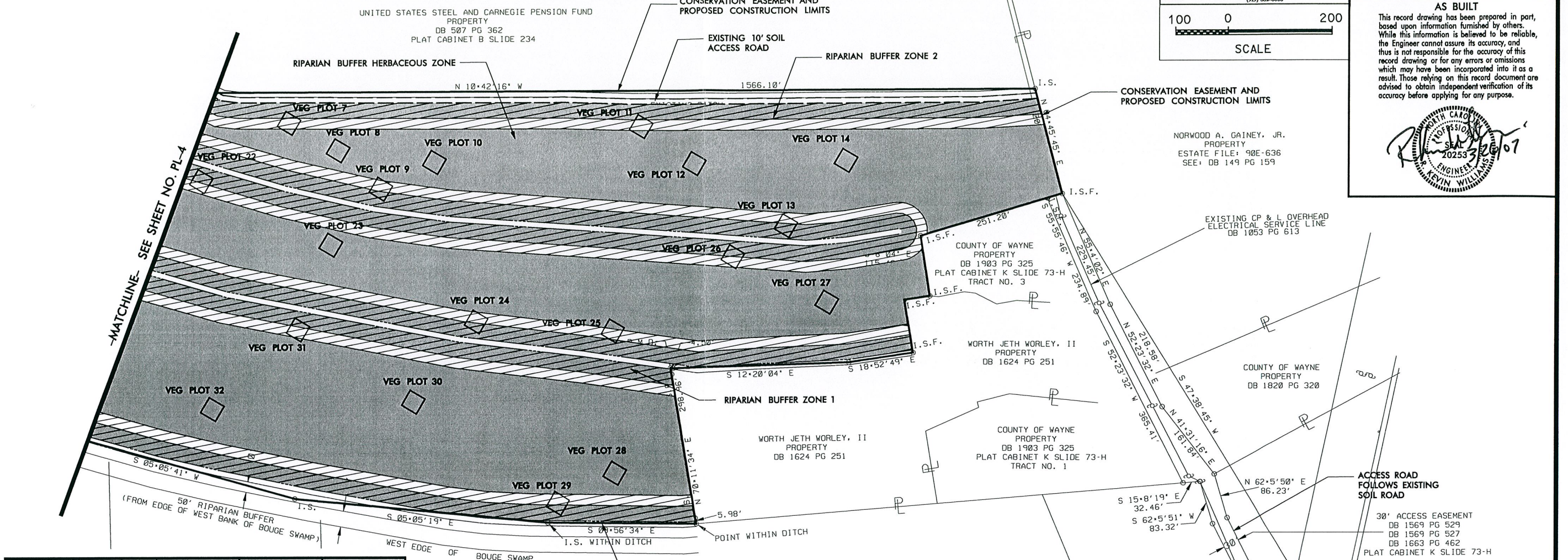
8/17/99

AS-BUILT PLANS

KO & ASSOCIATES, P.C.
 Consulting Engineers
 1011 SCHAUER DR. SUITE 202 RALPHIGH, N.C. 27606
 (919) 851-6066

100 0 200
 SCALE

PROJECT REFERENCE NO.	SHEET NO.
05-0649301	3
PROJECT ENGINEER	
AS BUILT	
This record drawing has been prepared in part, based upon information furnished by others. While this information is believed to be reliable, the Engineer cannot assure its accuracy, and thus is not responsible for the accuracy of this record drawing or for any errors or omissions which may have been incorporated into it as a result. Those relying on this record document are advised to obtain independent verification of its accuracy before applying for any purpose.	



VEG PLOT	LONGITUDE	LATITUDE	NORTHING	EASTING
1	77 55 00.235	35 17 04.382	560250.328	2323265.470
2	77 54 59.864	35 17 05.879	560404.018	2323294.549
3	77 54 58.586	35 17 08.426	560662.653	2323397.671
4	77 54 56.725	35 17 12.962	561122.885	2323546.919
5	77 54 57.509	35 17 13.003	561126.320	2323481.890
6	77 54 55.904	35 17 13.581	561186.203	2323614.286
7	77 54 55.996	35 17 17.885	561621.215	2323601.907
8	77 54 55.572	35 17 18.883	561722.487	2323635.949
9	77 54 54.878	35 17 19.802	561816.018	2323692.457
10	77 54 55.689	35 17 20.717	561907.782	2323624.226
11	77 54 57.308	35 17 24.462	562284.903	2323486.065
12	77 54 56.680	35 17 25.570	562397.478	2323536.727
13	77 54 55.645	35 17 27.477	562591.196	2323620.406
14	77 54 57.347	35 17 28.386	562681.546	2323478.335
15	77 54 58.751	35 17 02.221	560035.235	2323390.842
16	77 54 57.215	35 17 04.180	560234.662	2323516.000
17	77 54 56.886	35 17 05.868	560405.601	2323541.407
18	77 54 57.378	35 17 08.182	560639.080	2323498.070
19	77 54 55.323	35 17 10.346	560859.701	2323666.017
20	77 54 53.722	35 17 11.488	560976.597	2323797.460
21	77 54 54.207	35 17 12.486	561077.046	2323756.157
22	77 54 54.345	35 17 16.438	561476.432	2323740.352
23	77 54 53.421	35 17 19.057	561742.026	2323814.045
24	77 54 52.260	35 17 22.011	562041.700	2323907.010
25	77 54 52.591	35 17 24.590	562302.099	2323876.749
26	77 54 54.740	35 17 26.594	562502.752	2323696.392
27	77 54 54.082	35 17 28.487	562694.713	2323748.838
28	77 54 49.393	35 17 25.083	562354.850	2324141.244
29	77 54 48.492	35 17 24.109	562257.205	2324217.000
30	77 54 50.205	35 17 21.099	561951.368	2324078.348
31	77 54 51.384	35 17 18.723	561710.108	2323983.253
32	77 54 49.252	35 17 17.381	561576.377	2324161.451
33	77 54 49.882	35 17 14.052	561239.274	2324112.915
34	77 54 49.235	35 17 11.763	561008.465	2324169.075
35	77 54 50.506	35 17 10.707	560900.560	2324064.892
36	77 54 51.616	35 17 08.449	560671.291	2323975.383
37	77 54 53.103	35 17 06.321	560454.822	2323854.478
38	77 54 58.504	35 16 55.622	559368.361	2323418.599
39	77 54 53.651	35 17 05.629	560384.370	2323809.820
40	77 54 54.609	35 17 05.512	560371.675	2323730.540
41	77 54 54.990	35 17 05.223	560342.115	2323699.278
42	77 54 55.771	35 17 04.125	560230.410	2323635.754
43	77 54 56.271	35 17 02.434	560059.012	2323596.176
44	77 54 55.670	35 17 01.757	559991.118	2323646.741
45	77 54 54.879	35 17 02.606	560077.661	2323711.370
Norgainey1	77 54 54.964	35 17 02.639	560080.920	2323704.288
Norgainey2	77 54 54.431	35 17 03.993	560218.279	2323746.973

LEGEND

- RIPARIAN BUFFER ZONE 1
- RIPARIAN BUFFER ZONE 2
- RIPARIAN BUFFER HERBACEOUS ZONE
- WETLAND ENHANCEMENT AREA
- OPEN WATER AREA
- VEG PLOT LOCATIONS

FOR PLANTING DETAILS SEE SHEET NO. PL-2
 FOR EXISTING SITE CONDITION PLAN SEE SHEET NO. PL-7

NOTE:
 1. CONTRACTOR SHALL CONTACT THE NORTH CAROLINA ONE-CALL CENTER (800-632-4949) A MINIMUM OF 48 HOURS PRIOR TO BEGINNING CONSTRUCTION ACTIVITIES.
 2. TREES SHOULD BE PLANTED AT A DENSITY SUFFICIENT TO PROVIDE 320 TREES PER ACRE AT THE END OF MONITORING. TO ACHIEVE THIS DENSITY, APPROXIMATELY 436 (10x10 SPACING) TO 681 (8x8 SPACING) TREES/ACRE SHOULD BE PLANTED INITIALLY. SHRUBS SHOULD BE PLANTED AT A DENSITY OF (+/-300/ACRE) WITHIN ZONE 2 IN ADDITION TO THE REQUIRED TREE DENSITIES.

AS-BUILT PLANS	
NORWOOD GAINEY PROPERTY	
PROJECT NO.	05-0649301
COUNTY	WAYNE
DESIGNED BY	RKW
DRAWN BY	
DATE	03/26/07

3/26/2007
 Pl: Construction\Ag_Buils\norwood.psh_3.dgn