

# Rocky Branch Stream Restoration

Yadkin County, North Carolina

2010 Year 3 Monitoring Report - Final

EEP Project Number: 308

USGS HUC 03040102

EcoEngineering Project Number: EEP-08020

Prepared for:

NCDENR Ecosystem Enhancement Program

2728 Capital Blvd., Suite 1H 103

Raleigh, NC 27604



P. O. Box 14005 Research Triangle Park, NC 27709

919-287-4262 FAX 919-361-2269

[www.ecoengr.com](http://www.ecoengr.com)

## Table of Contents

1.0 Executive Summary/Project Abstract.....	1
1.1 Project Goals and Objectives.....	1
1.2 Vegetation Condition and Comparison.....	1
1.3 Stream Stability/Condition and Comparison.....	2
1.4 Wetland Conditions and Performance.....	2
1.5 Narrative Background.....	2
2.0 Methodology.....	2
3.0 References.....	3

## Project Conditions and Monitoring Data Appendices

### Appendix A – General Figures and Plan Views

- Figure 1. Vicinity Map
- Figure 2. Consolidated Current Condition Plan View

### Appendix B – General Project Tables

- Table 1. Project Restoration Components
- Table 2. Project Activity and Reporting History
- Table 3. Project Contacts Table
- Table 4. Project Attribute Table

### Appendix C – Vegetation Assessment Data

- Table 5. Vegetation Plot Mitigation Success Summary Table
- Table 6. Vegetation Metadata Table
- Table 6A. Vegetation Condition Assessment
- Table 7. Stem Count Total and Planted by Plot Species
  - Vegetation Monitoring Plot Photos
  - Vegetation Problem Area Photos (submitted electronically)
  - Vegetation Problem Area Inventory Table (submitted electronically)

### Appendix D – Stream Assessment Data

- Table 8. Visual Morphological Stability Assessment
- Table 9. Verification of Bankfull Events
- Stream Station Photos
- Cross Sections with Annual Overlays
- Longitudinal Profiles with Annual Overlays
- Pebble Count Plots with Annual Overlays
- BEHI and Sediment Export Estimates Table (omitted, not applicable)
- Baseline Stream Data Summary Table [Exhibit Table VIII] (submitted electronically)
- Morphology and Hydraulic Monitoring Summary [Exhibit Table IX] (Cross Section and Reach Parameters submitted electronically)
- Stream Problem Area Photos (submitted electronically)
- Stream Problem Area Inventory Table (submitted electronically)

## **Appendix E – Wetland Assessment**

Table 10. Wetland Criteria Attainment (omitted, not applicable)  
– Precipitation and Water Level Plots (omitted, not applicable)

## **1.0 Executive Summary/Project Abstract**

### ***1.1 Project Goals and Objectives***

The goals of this stream restoration project were to:

- To improve the overall water quality and aquatic habitat in and around the stream channels by reducing sediment and waste inputs into the stream caused by bank erosion, mass-wasting, and livestock influences.
- To improve the richness and diversity of the plant species within the conservation easement.
- To facilitate on-going livestock operations through farm management improvements.
- To provide perpetual protection for the restored stream channels and associated riparian and upland buffers.

These goals will be met through the following objectives:

- By using natural channel design to restore stable dimension, pattern, and profile for the project stream reaches.
- By establishing a native plant community to match the endemic plant species at the site.
- By reducing the quantities of exotic invasive species at the site through mechanical and chemical methods.
- By decommissioning a dairy waste storage pond to eliminate future risks to the Rocky Branch channel and the watershed.
- By installing watering facilities and a shadehouse to manage livestock previously using the restoration site.
- By establishing a conservation easement and permanent fencing to provide long-term protection for the site. (Mulkey, 2008)

### ***1.2 Vegetation Condition and Comparison***

Original baseline vegetation monitoring data was not provided prior to the 2008 Monitoring Year 1 and 2008 is considered a drought year. The 2009 Monitoring Year 2 is considered the baseline datum because after two years of monitoring it is assumed all planted stems within a vegetation monitoring plot have been surveyed and accounted for. Therefore, any additional species observed in proceeding monitoring years are considered volunteer species.

Current stem counts were calculated using vegetation plot monitoring data. Interim density targets (stems/acre) are 320 at year 3 and 288 at year 4. Final stem count criteria are 260 trees per acre at the end of the five (5) year monitoring. As for monitored Year 3, Rocky Branch had 11 plots encompassing 0.27 acres, containing 378 planted and volunteer stems, which yielded a density of 1,391 trees per acre including planted and volunteer species. Planted and volunteer vegetation survival threshold was met for each of the plots.

Various exotic/invasive species were observed at the site. Exotic species observed at the site include Chinese privet (*Ligustrum sinense*), Chinese lespedeza (*Lespedeza cuneata*), multiflora rose (*Rosa multiflora*), and cattail (*Typha latifolia*). The extent of exotic/invasive species is depicted in the Consolidated Current Conditions Plan View Appendix D.

During the site investigations, encroachments into the conservation easement were observed in the form of cattle entering the easement. The conservation easement encroachment area is noted on Sheet 6 of the Consolidated Current Conditions Plan View located in Appendix D.



The conservation easement encroachment area is near the pond located at the end of the project and within an area that was not previously planted. Field indicators (i.e. cattle hoofs and cattle excrement) were observed indicating that cattle have encroached into the conservation easement. It appeared that cattle entered the conservation easement for short periods of time since there was not an over abundance of field indicators. No damage to planted areas within the conservation easement was noted.

### ***1.3 Stream Stability/Condition and Comparison***

The largest problem observed within the stream channel is beaver activity. A beaver den and a new beaver dam were observed this year. Overall the channel morphology appeared stable. However, there is a “J” hook structure (Structure Number 14, Station 12+00, Consolidated Current Conditions Plan View, Appendix D) which has been compromised due to the beaver activity associated with the former beaver dam number 3. Evidence of a bankfull event was observed this monitoring year.

### ***1.4 Wetland Conditions and Performance***

No wetlands are being monitored for mitigation credits at this project site.

### ***1.5 Narrative Background***

Summary information/data related to the occurrence of items such as beaver or encroachment and statistics related to performance of various project and monitoring elements can be found in the tables and figures in the report appendices. Narrative background and supporting information formerly found in these reports can be found in the mitigation and restoration plan documents available on the EEP website. All raw data supporting the tables and figures in the appendices is available from EEP upon request.

## **2.0 Methodology**

All monitoring methodologies follow the most current templates and guidelines provided by EEP (EEP, 2006; EEP, 2009). Photographs were taken at high resolution using an Olympus FE-115 5.0 megapixel digital camera. GPS location information was collected using a Trimble Geo XT handheld mapping grade GPS unit. Stream and vegetation problem areas were noted in the field on As-Built Plan Sheets.

The methods used to generate the data in this report are standard fluvial geomorphology techniques as described in *Applied River Morphology* (Rosgen, 1996) and related publications from US Forest Service and the interagency Stream Mitigation Guidelines (USACE, 2003).

Vegetation monitoring methods followed the 2008, Version 4.2 CVS-EEP Protocol for Recording Vegetation (Lee et. al., 2008). Vegetation plot photographs were collected for each vegetation plot. Vegetation monitoring plots were re-marked in the field by replacing all old flagging with new orange flagging. Monitoring taxonomy follows *Flora of the Carolinas, Virginia, Georgia, and Surrounding Areas* (Weakley 2007). Stem height was measured with a folding one-meter rule. Diameter at breast height and decimeter height were measured with calipers.

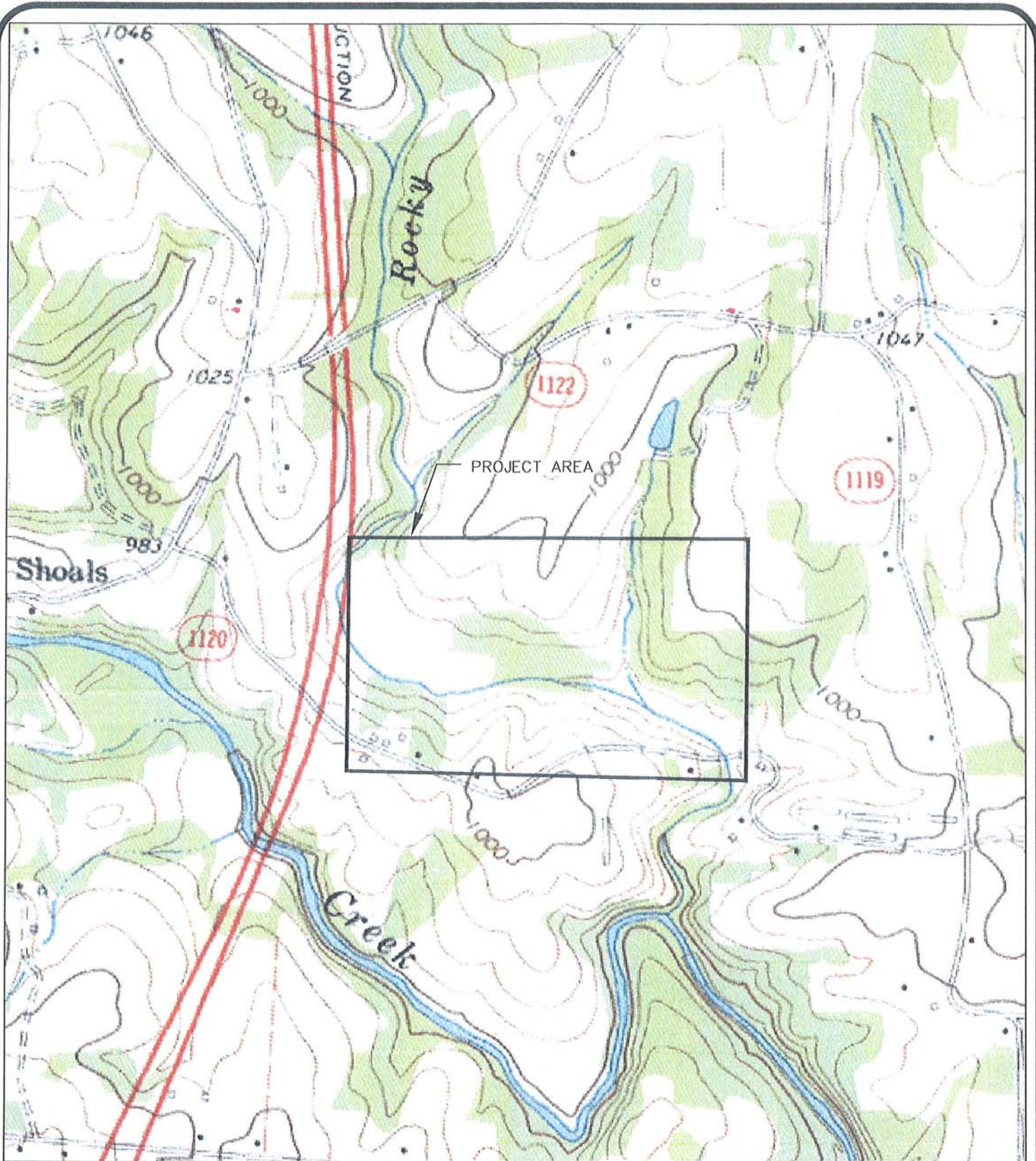
### **3.0 References**

- Ecosystem Enhancement Program (EEP), 2006. Monitoring Report Guidelines, November 16, 2006.
- Ecosystem Enhancement Program (EEP), 2009. Monitoring Report Guidelines, June 1, 2009.
- Lee, Michael T., R. K. Peet, S. D. Roberts, and T. R. Wentworth. 2008. CVS-EEP Protocol for Recording Vegetation, Version 4.2 (<http://cvs.bio.unc.edu/methods.htm>)
- Mulkey Engineer and Consultants, 2008. As-Built Mitigation Plan Rocky Branch Stream Mitigation Report. Submitted to NCDENR-EEP, February 2008.
- Rosgen, D.L. 1996. Applied Morphology. Wildland Hydrology, Pagosa Springs, CO.
- US Army Corps of Engineers (USACE), 2003. April 2003 Stream Mitigation Guidelines.
- US Army Corps of Engineers (USACE), 2005. Information Regarding Stream Restoration In The Outer Coastal Plain of North Carolina. US Army Corps of Engineers, Wilmington District, Regulatory Division and North Carolina Department of Environment and Natural Resources, Division of Water Quality, December 1, 2005.
- Weakley, A. S., 2008. Flora of the Carolinas, Virginia, Georgia, northern Florida, and surrounding areas. University of North Carolina Herbarium (NCU), North Carolina Botanical Garden, University of North Carolina at Chapel Hill, working Draft as of April 7, 2008.

APPENDIX A

General Figures and Plan View





USGS, 7.5 MINUTE, TOPOGRAPHIC QUADRANGLE;  
 BROOKS CROSSROADS, N.C.; 1970; LAT: 36.0943785° N  
 LON: 80.8114769° W



McADAMS	PROJECT NO.	EEP-08020
	FILENAME:	EEP-08020
	SCALE:	1" = 1,000
	DATE:	08-13-10



## ROCKY BRANCH VICINITY MAP

YADKIN COUNTY, NORTH CAROLINA

### EcoEngineering

A division of The John R. McAdams Company, Inc.

ENGINEERS • PLANNERS • SURVEYORS • ENVIRONMENTAL

RESEARCH TRIANGLE PARK • CHARLOTTE • WILMINGTON  
 2005 Meridian Parkway, Durham NC 27713  
 800-733-5646 • www.johnr-mcadams.com • License No.: C-0293

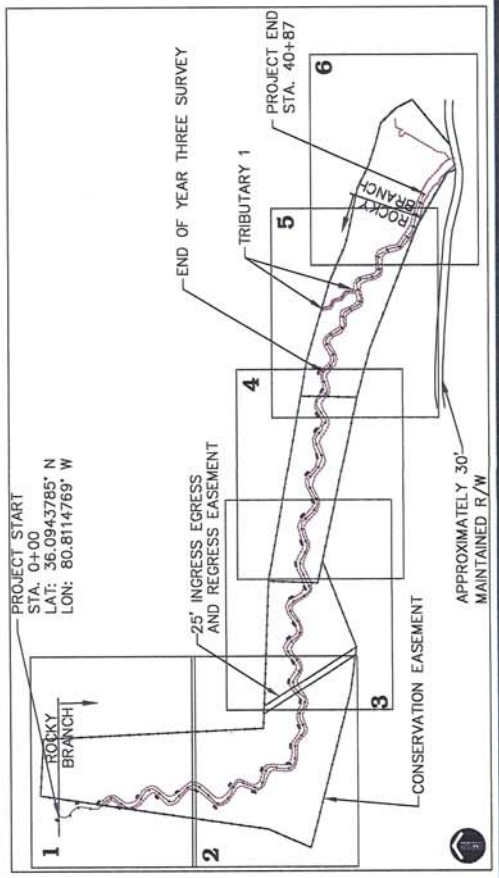
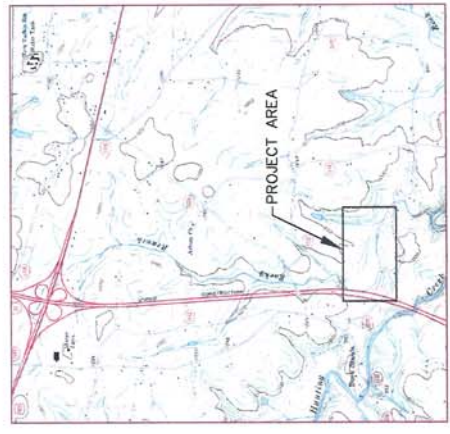


# ROCKY BRANCH

## CONSOLIDATED CURRENT CONDITIONS PLAN VIEW - YEAR THREE MONITORING

YADKIN COUNTY, NORTH CAROLINA  
 EEP PROJECT NUMBER: 308  
 DATE: AUGUST 23, 2010

NORTH CAROLINA  
 ECOSYSTEM ENHANCEMENT PROGRAM  
 NC-EEP CONTACT: HARRY TSONIDES (828) 545-7057



POINT NUMBER	NORTHING	EASTING	ELEVATION	DESCRIPTION
1	856835.93	1462824.91	928.25	CONTROL
2	857086.98	1462784.29	923.60	CONTROL
3	857497.74	1462826.84	921.75	CONTROL
4	857374.24	1462866.69	943.35	CONTROL
5	857383.41	1466105.73	924.76	CONTROL
6	857286.17	1466263.15	945.11	CONTROL
7	857204.24	1466268.09	947.79	CONTROL
8	857188.08	1466594.46	939.14	CONTROL
9	856985.38	1467244.76	928.06	CONTROL
10	856956.29	1466467.36	970.98	CONTROL
11	856897.33	1467392.45	937.61	CONTROL
12	857064.87	1467441.85	937.74	CONTROL
101	858419.68	1464887.37	936.69	CONTROL
102	858625.29	1462800.38	928.74	CONTROL
103	858625.29	1462800.38	923.28	CONTROL
104	858625.29	1462800.38	949.73	CONTROL
105	857268.69	1465445.98	923.28	CONTROL
106	858009.21	1462950.27	949.60	N. SET
107	858049.05	1462091.25	941.84	N. SET
108	857672.99	1462957.40	923.10	N. SET
109	857351.66	1463705.60	933.45	N. SET
110	857358.08	1466070.12	938.28	N. SET
111	857483.76	1466334.47	936.79	N. SET
9001	856530.66	1465077.56	969.66	TIP104
9002	856593.24	1465085.65	964.54	EEP-IN-308APLE
9003	856597.24	1464859.07	924.86	R/W MIN
9004	856162.53	1464795.63	928.21	BENCHMARK 1
9005	856025.27	1465002.36	927.84	TIP102
9006	857683.27	1463163.92	925.68	BENCHMARK 3
9007	857683.27	1463163.92	925.68	BENCHMARK 4
9008	857268.69	1464446.94	923.28	TIP105
9009	857268.69	1464446.94	923.28	TIP105
9010	857439.76	1466684.27	938.41	BENCHMARK 5
9011	857439.76	1466684.27	938.41	BENCHMARK 6
9012	857439.76	1466684.27	938.41	BENCHMARK 7

NOTE: SURVEY DATES OF THALWEG AND TOP-OF-BANK - 08/02/10 TO 08/05/10.

SHEET INDEX  
 1-6 INTEGRATED PLAN VIEW

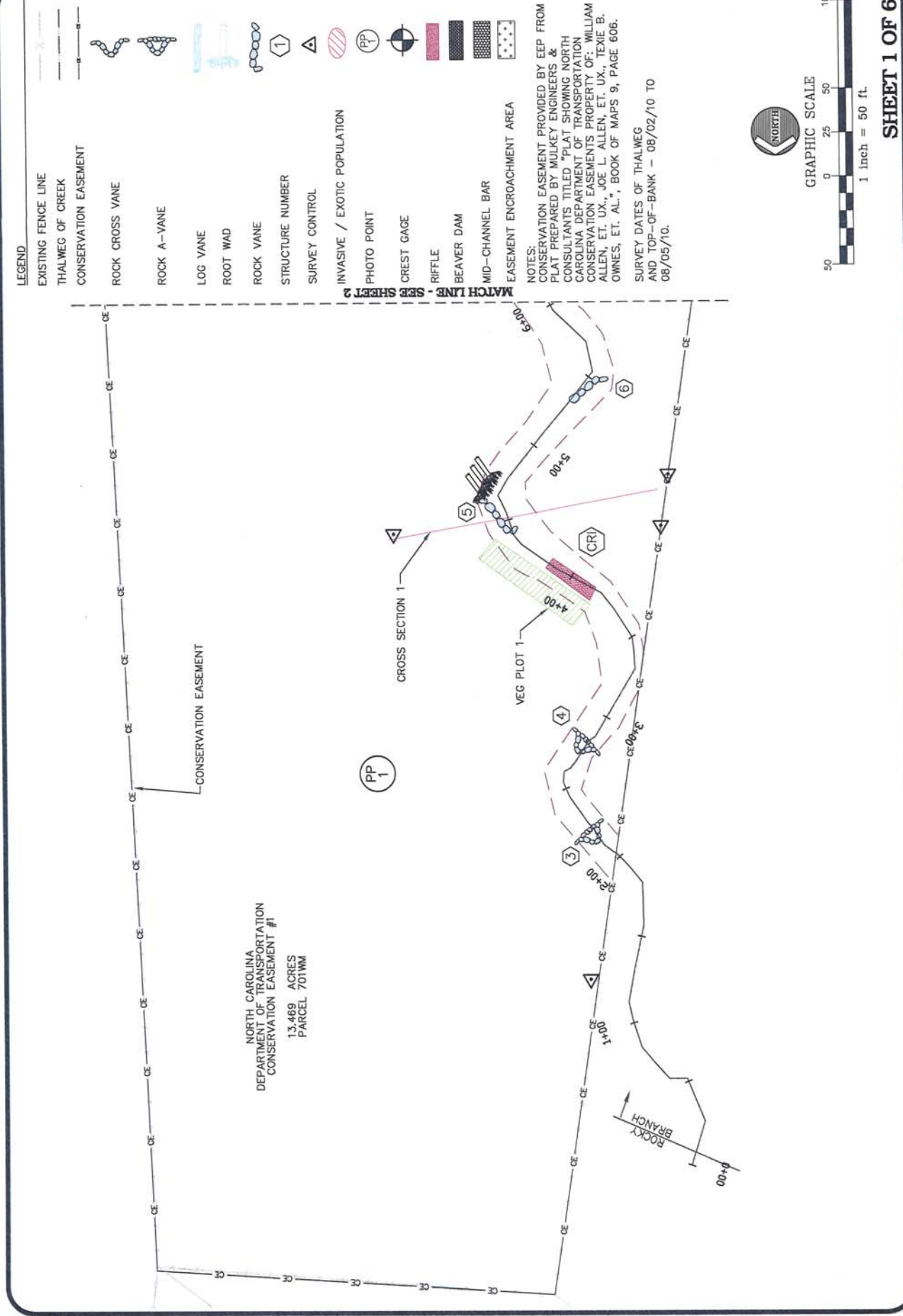
**EcoEngineering**  
 A division of The John R. McAdams Company, Inc.  
 ENGINEERS • PLANNERS • SURVEYORS • ENVIRONMENTAL  
 RESEARCH TRIANGLE PARK • CHARLOTTE  
 2905 Meridian Parkway, Durham, NC 27713  
 800-735-5646 • www.johnr-mc.com • License No. C-6083

**Ecosystem Enhancement**  
 A Division of The John R. McAdams Company, Inc.

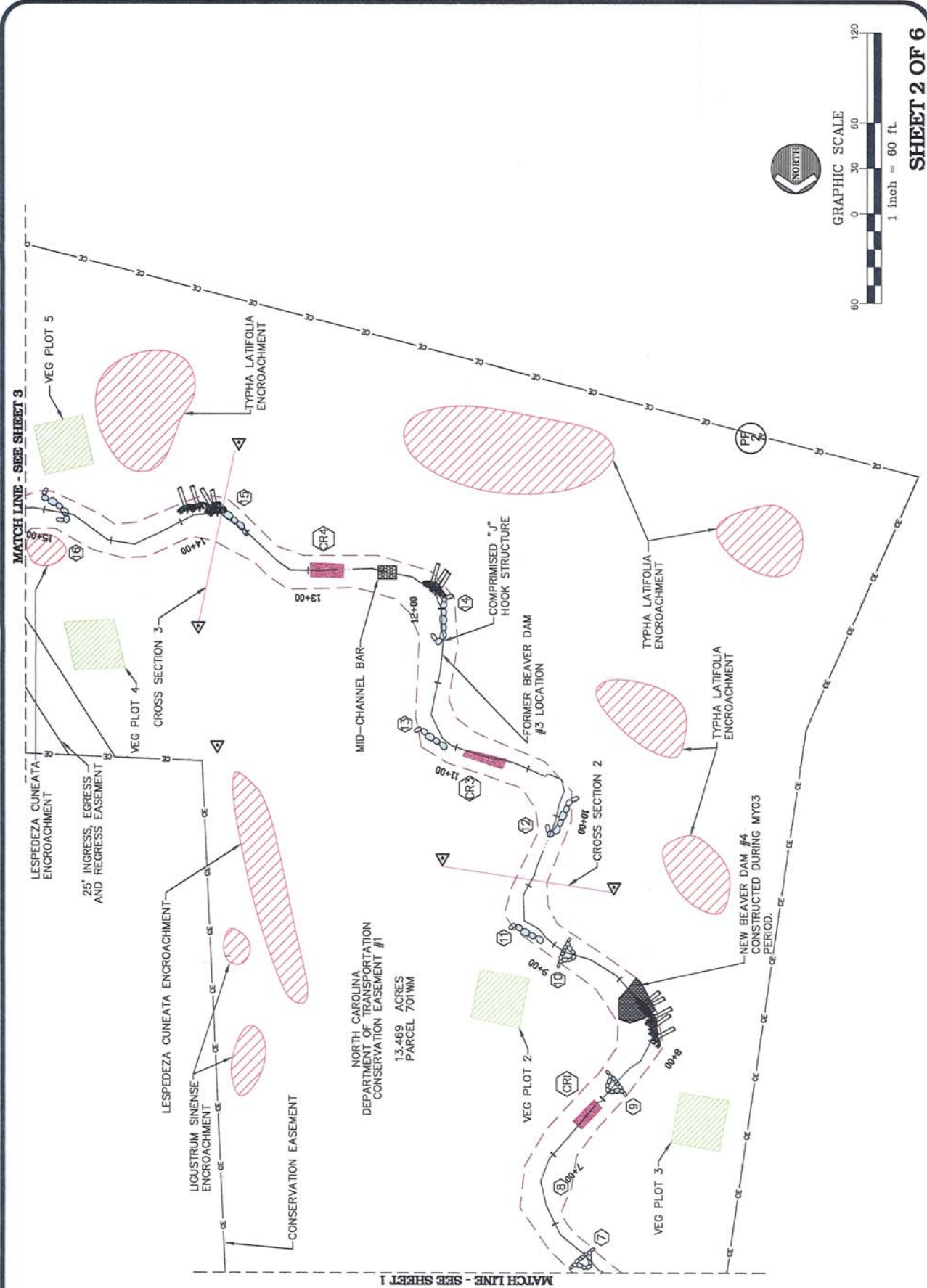
**LEGEND**

- EXISTING FENCE LINE
- THALWEG OF CREEK
- CONSERVATION EASEMENT
- ROCK CROSS VANE
- ROCK A-VANE
- LOG VANE
- ROOT WAD
- ROCK VANE
- STRUCTURE NUMBER
- SURVEY CONTROL
- INVASIVE / EXOTIC POPULATION
- PHOTO POINT
- CREST GAGE
- RIFFLE
- BEAVER DAM
- MID-CHANNEL BAR
- EASEMENT ENCROACHMENT AREA

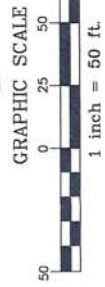
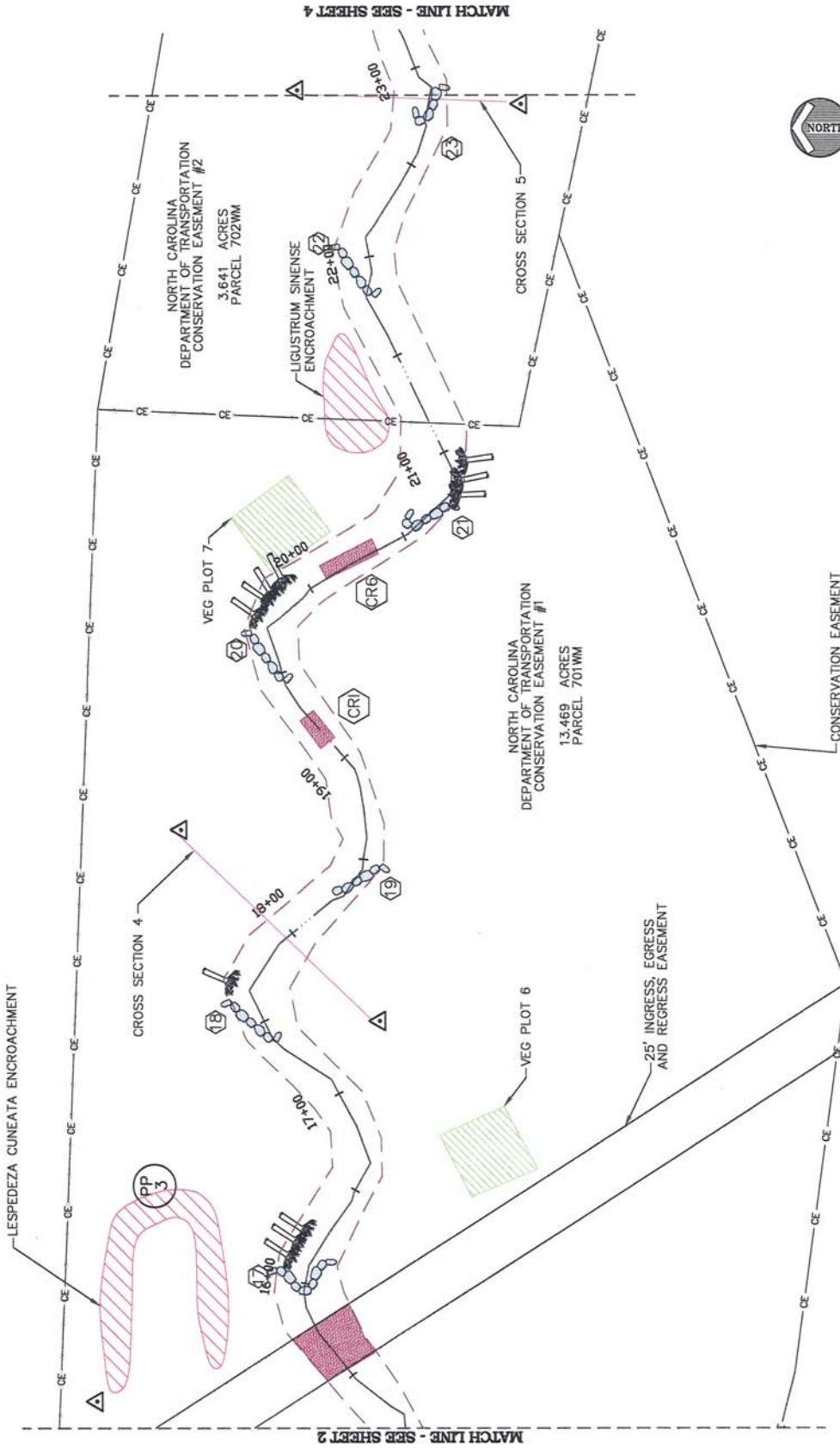
NOTES:  
 CONSERVATION EASEMENT PROVIDED BY EEP FROM  
 PLAT PREPARED BY MULKEY ENGINEERS &  
 CONSULTANTS TITLED "PLAT SHOWING NORTH  
 CAROLINA DEPARTMENT OF TRANSPORTATION  
 CONSERVATION EASEMENTS PROPERTY OF: WILLIAM M.  
 ALLEN, ET. UX., JOE L. ALLEN, ET. UX., TEXIE B.  
 OWNES, ET. AL.", BOOK OF MAPS 9, PAGE 606.  
 SURVEY DATES OF THALWEG  
 AND TOP-OF-BANK - 08/02/10 TO  
 08/05/10.



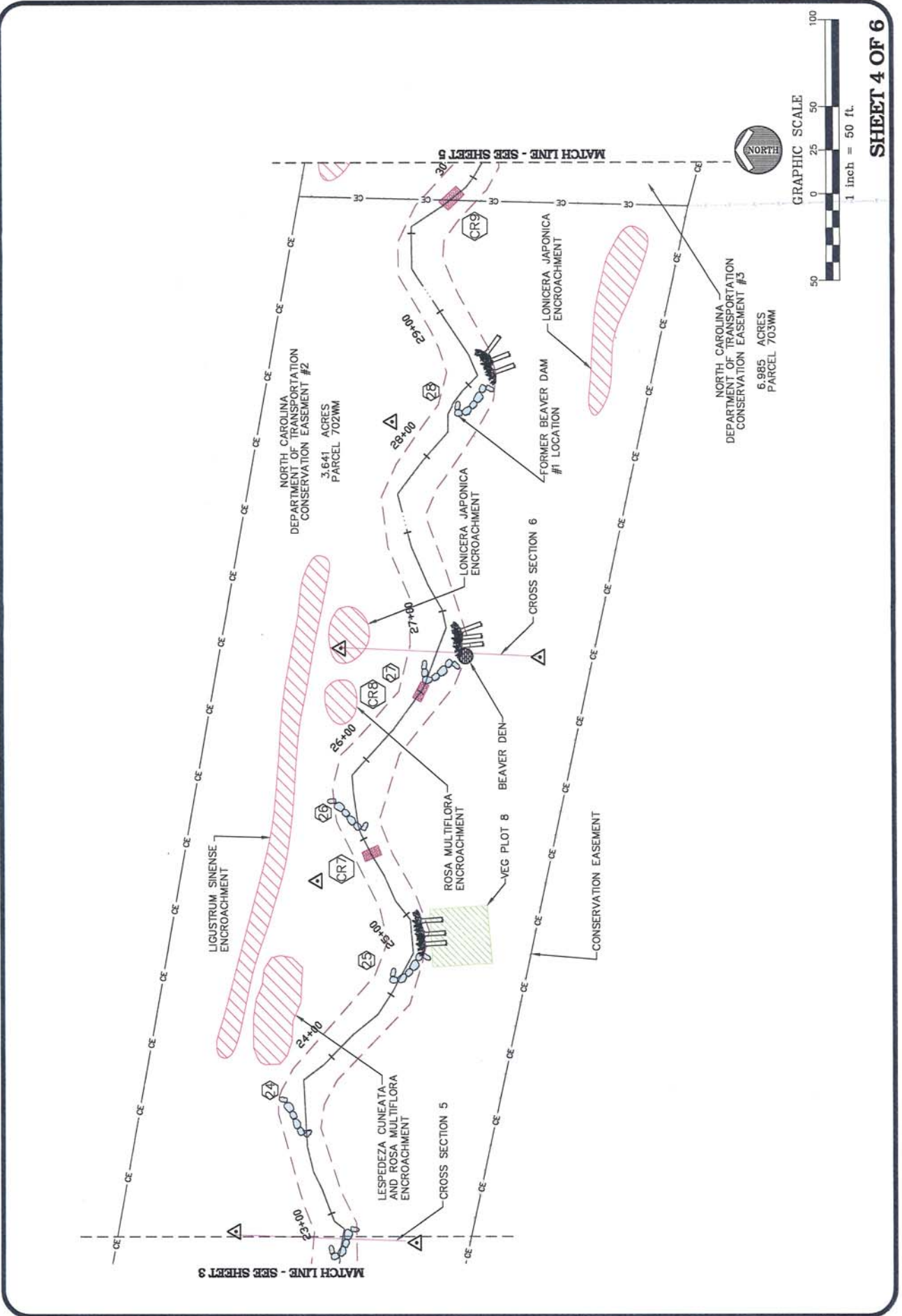
NORTH CAROLINA  
 DEPARTMENT OF TRANSPORTATION  
 CONSERVATION EASEMENT #1  
 13,469 ACRES  
 PARCEL 701WM

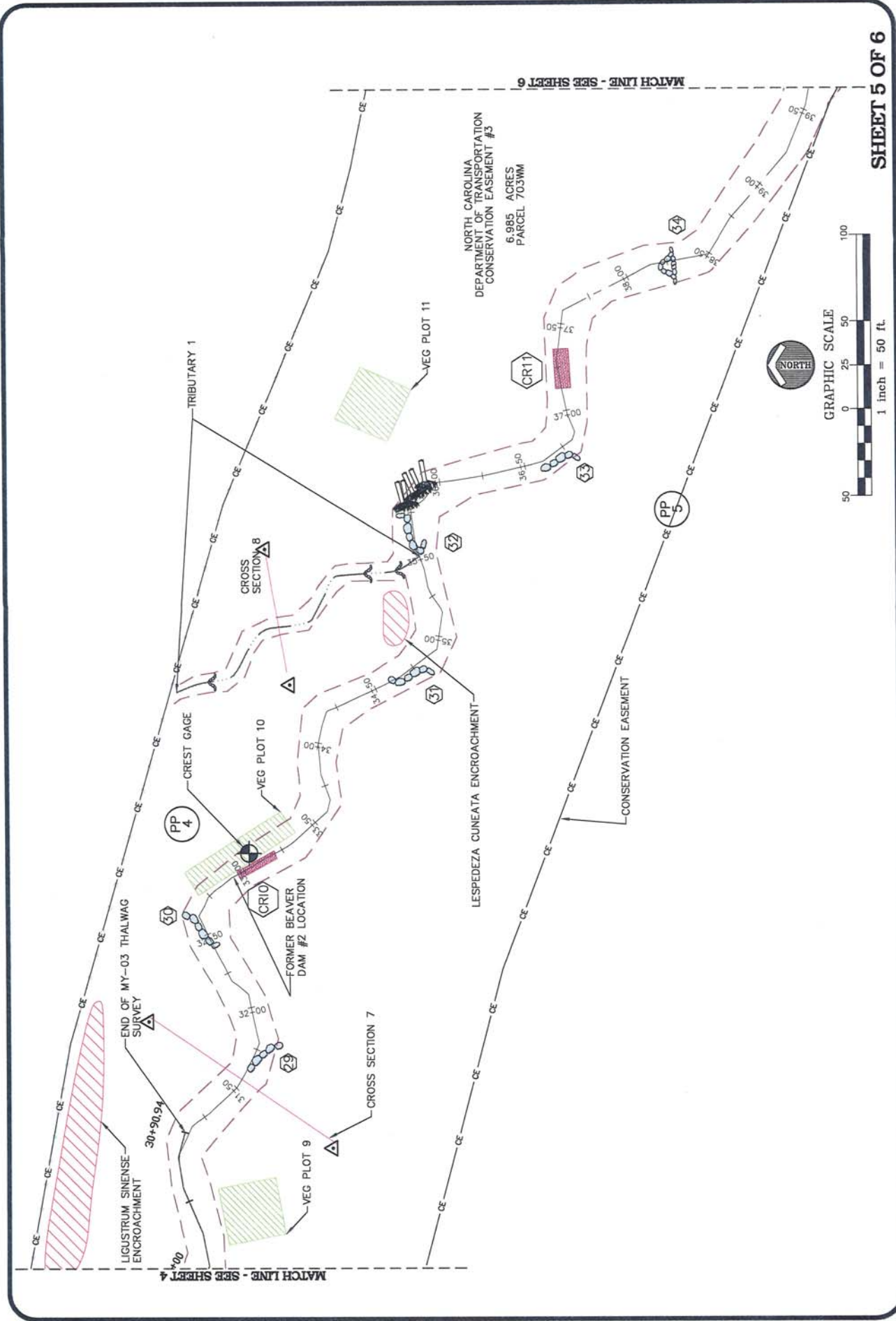


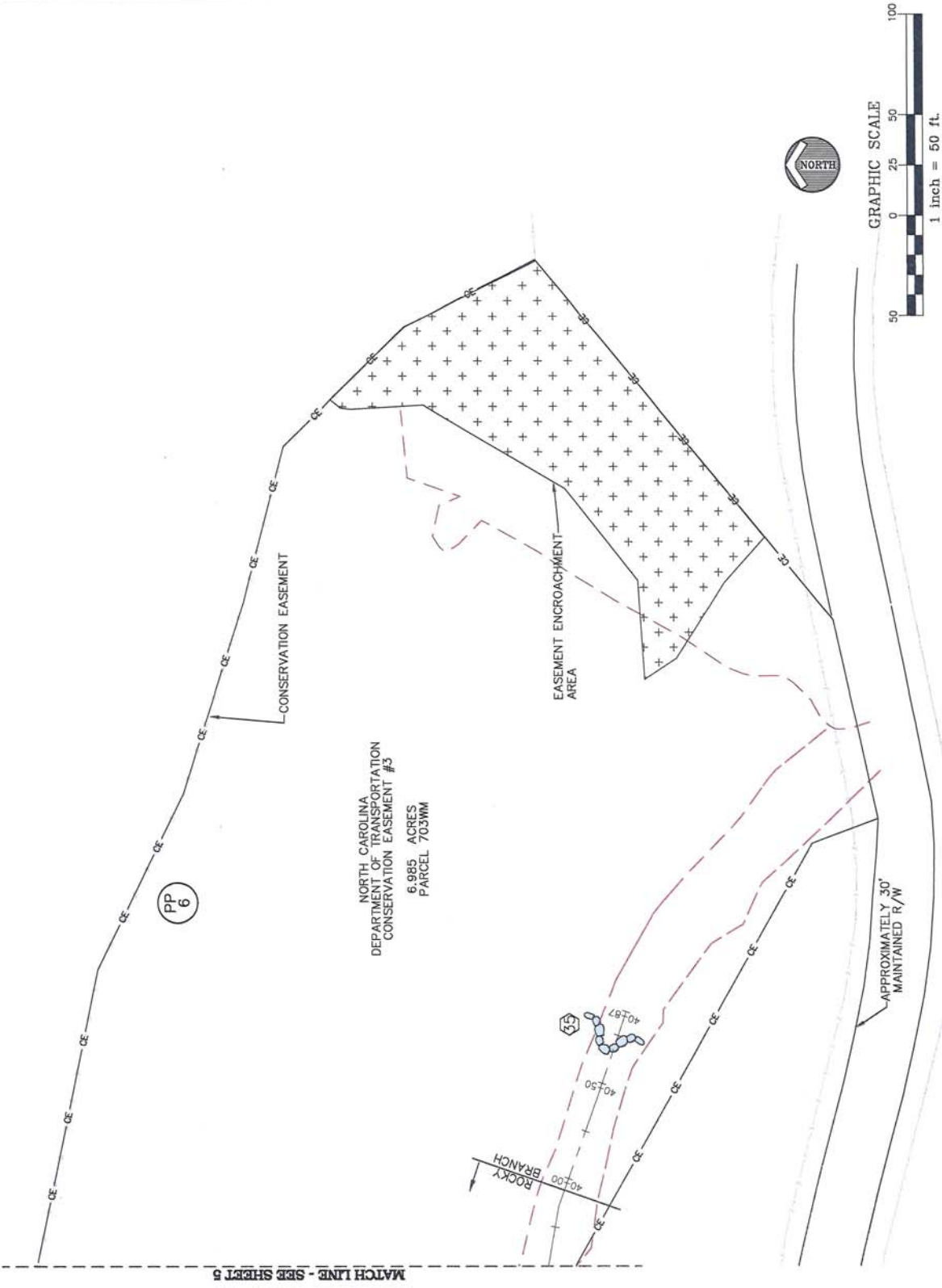












APPENDIX B

General Project Tables



**Table 1. Project Restoration Components  
Rocky Branch Stream Restoration Site/EEP Project Number: 308**

Project Segment or Reach ID	Existing Feet/Acres	Type	Approach	Footage or Acreage	Mitigation Ratio	Mitigation Units	Stationing	Comment
Rocky Branch	3,090	R	P1 & P2	3,614	1	3,614	0+00 - 30+90.94	
		EI	P4	206	0.66	137		
Tributary 1	593	R	P1	172	1	172	0+00 - 1+72	
Tributary 2	280	NA	NA	Pond	NA	NA	NA	NA = Not Applicable; Portion of original channel contained within proposed conservation easement
<b>Mitigation Unit Summations</b>								
Stream (lf)	Riparian Wetland (Ac)	Nonriparian Wetland (Ac)	Total Wetland (Ac)	Buffer (Ac)	Comment			
3,923	0	0	0	0				

R= Restoration  
EI= Enhancement

EII= Enhancement II  
S= Stabilization

P1= Priority I  
P2= Priority II

P3= Priority III  
SS=Stream Bank Stabilization

**Table 2. Project Activity and Reporting History**  
**Rocky Branch Stream Restoration Site/EEP Project Number: 308**

<b>Activity or Report</b>	<b>Data Collection Complete</b>	<b>Actual Completion or Delivery</b>
Restoration Plan	Winter 04	Mar-05
Final Design – 90%	Summer 05	Winter 05
Construction	May-06	Sep-06
Temporary S&E mix applied to entire project area	May-06	Sep-06
Permanent seed mix applied to reach/segments 1 & 2	Sep-06	Sep-06
Containerized and B&B plantings for reach/segments 1 & 2	Fall 06	Dec-06
Mitigation Plan / As-built (Year 0 Monitoring – baseline)	Winter 07	Feb-08
Year 1 Monitoring	Sep-08	Nov-08
Year 2 Monitoring	Sep-09	Nov-09
Year 3 Monitoring	Aug-10	Oct-10

Note: Timeframe estimated from information provided by EEP.

**Table 3. Project Contacts Table**  
**Rocky Branch Stream Restoration Site/EEP Project Number: 308**

<b>Designer</b>	Mulkey Engineers & Consultants 6750 Tryon Road, Cary, NC 27518
Primary project design POC	Wendee Smith, 919-858-1833
<b>Construction Contractor</b>	Fluvial Solutions, Inc. PO Box 28749, Raleigh, NC 27611-8749
Construction contractor POC	Peter Jelenevsky, 919-605-6134
<b>Planting Contractor</b>	Carolina Silvics 908 Indian Trail Road, Edenton, NC 27932
Planting contractor POC	Mary-Margaret McKinney 252-484-8491
<b>Seeding Contractor</b>	Contact: Fluvial Solutions, Inc. PO Box 28749, Raleigh, NC 27611-8749
Planting contractor POC	Peter Jelenevsky, 919-605-6134
Seed Mix Sources	Contact: Fluvial Solutions, Inc. Peter Jelenevsky, 919-605-6134
Nursery Stock Suppliers	ArboGen 843-851-4129
<b>Monitoring Performers</b>	EcoEngineering - A Division of The John R. McAdams Co. 2905 Meridian Parkway, Durham, NC 27713
Stream Monitoring POC Jim Halley	919-287-4262
Vegetation Monitoring POC Jim Halley	919-287-4262
Wetland Monitoring POC NA	NA

Note: Information obtained from EEP documents and bid tabulation results. Use contacts in table for additional information or to verify data.

**Table 4. Project Background Table**  
**Rocky Branch Stream Restoration Site/EEP Project Number: 308**

Project County	Yadkin County
Drainage Area	3.1 square miles
Drainage impervious cover estimate (%) For example	5%
Stream Order	1
Physiographic Region	Piedmont
Ecoregion	Northern Inner Piedmont
Rosgen Classification of As-built	C4
Cowardin Classification	R3UBH
Dominant soil types	Chewacla, Cecil, Appling, and Wilkes
Reference site ID	Spencer Creek
USGS HUC for Project and Reference	Project 03040102, Reference 03040104
NCDWQ Sub-basin for Project and Reference	Project 03-07-06, Reference 03-07-09
NCDWQ classification for Project and Reference	Project WS-III, Reference WS-IV
Any portion of any project segment 303d listed?	no
Any portion of any project segment upstream of a 303d listed segment?	no
Reasons for 303d listing or stressor	no
% of project easement fenced	100%



APPENDIX C

Vegetation Assessment Data

**Table 5. Vegetation Plot Mitigation Success Summary Table**

**Rocky Branch Stream Restoration Site/EEP Project ID: 308**

<b>Tract</b>	<b>Vegetation Plot ID</b>	<b>Vegetation Survival Threshold Met?</b>	<b>Tract Mean</b>
Rocky Branch	VP1	Y	100%
	VP2	Y	
	VP3	Y	
	VP4	Y	
	VP5	Y	
	VP6	Y	
	VP7	Y	
	VP8	Y	
	VP9	Y	
	VP10	Y	
	VP11	Y	

Note: Threshold criteria based on planted and volunteer species.

**Table 6. Vegetation Metadata**

**Rocky Branch Stream Restoration Site/EEP Project ID: 308**

<b>Report Prepared By</b>	George Buchholz
<b>Date Prepared</b>	10/4/2010 16:25
<b>database name</b>	EcoEngineering-2010-B.mdb
<b>database location</b>	X:\Projects\EEP\EEP-08020 (Rocky Branch)\Storm\CVS Vegetation Data\2010 Vegetation Data
<b>computer name</b>	BUCHHOLZGEO
<b>file size</b>	52297728

**DESCRIPTION OF WORKSHEETS IN THIS DOCUMENT-----**

<b>Metadata</b>	Description of database file, the report worksheets, and a summary of project(s) and project data.
<b>Proj, planted</b>	Each project is listed with its PLANTED stems per acre, for each year. This excludes live stakes.
<b>Proj, total stems</b>	Each project is listed with its TOTAL stems per acre, for each year. This includes live stakes, all planted stems, and all natural/volunteer stems.
<b>Plots</b>	List of plots surveyed with location and summary data (live stems, dead stems, missing, etc.).
<b>Vigor</b>	Frequency distribution of vigor classes for stems for all plots.
<b>Vigor by Spp</b>	Frequency distribution of vigor classes listed by species.
<b>Damage</b>	List of most frequent damage classes with number of occurrences and percent of total stems impacted by each.
<b>Damage by Spp</b>	Damage values tallied by type for each species.
<b>Damage by Plot</b>	Damage values tallied by type for each plot.
<b>Planted Stems by Plot and Spp</b>	A matrix of the count of PLANTED living stems of each species for each plot; dead and missing stems are excluded.

**PROJECT SUMMARY-----**

<b>Project Code</b>	308
<b>project Name</b>	Rocky Branch
<b>Description</b>	Rocky Branch Stream Restoration Project
<b>River Basin</b>	Yadkin-Pee Dee
<b>length(ft)</b>	3,992
<b>stream-to-edge width (ft)</b>	24
<b>area (sq m)</b>	0.04 sq mile (24.10 acres)
<b>Required Plots (calculated)</b>	11
<b>Sampled Plots</b>	11

**Table 6A. Vegetation Condition Assessment  
Rocky Branch Stream Restoration Site/EEP Project ID: 308**

**Planted Acreage 13.29**

Vegetation Category	Definitions	Mapping Threshold	CCPV Depiction	Number of Polygons	Combined Acreage	% of Planted Acreage
<b>1. Bare Areas</b>	Very limited cover of both woody and herbaceous material.	0.1 acres	----	0	0	0.0%
<b>2. Low Stem Density Areas</b>	Woody stem densities clearly below target levels based on MY3, 4, or 5 stem count criteria.	0.1 acres	----	0	0	0.0%
<b>Total</b>						
<b>3. Areas of Poor Growth Rates or Vigor</b>	Areas with woody stems of a size class that are obviously small given the monitoring year.	0.25 acres	----	0	0	0.0%
<b>Cumulative Total</b>						<b>0.0%</b>

**Easement Acreage 24.09**

Vegetation Category	Definitions	Mapping Threshold	CCPV Depiction	Number of Polygons	Combined Acreage	% of Easement Acreage
<b>4. Invasive Areas of Concern</b>	Areas or points (if too small to render as polygons at map scale).	1000 SF	diagonal, red	17	0.81	3.36%
<b>5. Easement Encroachment Areas</b>	Areas or points (if too small to render as polygons at map scale).	none	cross, black	1	0.35	1.5%









VEGETATION PLOT 1 - STREAMBANKS (5m X 20m). VIEW FROM SOUTHEAST PLOT CORNER.



VEGETATION PLOT 2 - RIPARIAN BUFFER (10m x 10m). VIEW FROM SOUTHEAST PLOT CORNER.

McADAMS

PROJECT NO. EEP-08020

FILENAME: EEP08020-EX1

SCALE: NTS

DATE: 08-11-10



**ROCKY BRANCH**  
**MONITORING PHOTOS**  
**YADKIN COUNTY, NORTH CAROLINA**

**EcoEngineering**  
 A division of The John R. McAdams Company, Inc.

RESEARCH TRIANGLE PARK, NC  
 P.O. BOX 14005 ZIP 27709-4005  
 (919) 361-5000





VEGETATION PLOT 3 - RIPARIAN BUFFER (10m x 10m). VIEW FROM NORTHWEST PLOT CORNER.



VEGETATION PLOT 4 - RIPARIAN BUFFER (10m x 10m). VIEW FROM NORTHWEST PLOT CORNER.

McADAMS	PROJECT NO.	EEP-08020
	FILENAME:	EEP08020-EX1
	SCALE:	NTS
	DATE:	08-11-10



**ROCKY BRANCH**  
MONITORING PHOTOS  
YADKIN COUNTY, NORTH CAROLINA

**EcoEngineering**  
A division of The John R. McAdams Company, Inc.  
RESEARCH TRIANGLE PARK, NC  
P.O. BOX 14005 ZIP 27709-4005  
(919) 381-5000





VEGETATION PLOT 5 - RIPARIAN BUFFER (10m x 10m). VIEW FROM NORTHWEST CORNER.



VEGETATION PLOT 6 - RIPARIAN BUFFER (10m x 10m). VIEW FROM NORTHWEST PLOT CORNER.

McADAMS

PROJECT NO. EEP-08020

FILENAME: EEP08020-EX1

SCALE: NTS

DATE: 08-11-10



**ROCKY BRANCH**  
**MONITORING PHOTOS**  
**YADKIN COUNTY, NORTH CAROLINA**

**EcoEngineering**  
 A division of The John R. McAdams Company, Inc.

RESEARCH TRIANGLE PARK, NC  
 P.O. BOX 14005 ZIP 27709-4005  
 (919) 361-5000





VEGETATION PLOT 7 - RIPARIAN BUFFER (10m x 10m). VIEW FROM NORTHWEST CORNER.



VEGETATION PLOT 8 - RIPARIAN BUFFER (10m x 10m). VIEW FROM NORTHWEST PLOT CORNER.

McADAMS

PROJECT NO. EEP-08020  
 FILENAME: EEP08020-EX1  
 SCALE: NTS  
 DATE: 08-11-10



**ROCKY BRANCH**  
 MONITORING PHOTOS  
 YADKIN COUNTY, NORTH CAROLINA

**EcoEngineering**  
 A division of The John R. McAdams Company, Inc.

RESEARCH TRIANGLE PARK, NC  
 P.O. BOX 14005 ZIP 27709-4005  
 (919) 361-5000





VEGETATION PLOT 9 - RIPARIAN BUFFER (10m x 10m). VIEW FROM NORTHWEST CORNER.



VEGETATION PLOT 10 - RIPARIAN BUFFER (5m x 20m). VIEW FROM NORTHWEST PLOT CORNER.

McADAMS

PROJECT NO. EEP-08020

FILENAME: EEP08020-EX1

SCALE: NTS

DATE: 08-11-10



**ROCKY BRANCH**  
**MONITORING PHOTOS**  
**YADKIN COUNTY, NORTH CAROLINA**

**EcoEngineering**  
 A division of The John R. McAdams Company, Inc.

RESEARCH TRIANGLE PARK, NC  
 P.O. BOX 14005 ZIP 27709-4005  
 (919) 361-5000





VEGETATION PLOT II - RIPARIAN BUFFER (10m x 10m). VIEW FROM NORTHWEST CORNER.

McADAMS

PROJECT NO. EEP-08020

FILENAME: EEP08020-EX1

SCALE: NTS

DATE: 08-11-10



**ROCKY BRANCH**  
MONITORING PHOTOS  
YADKIN COUNTY, NORTH CAROLINA

 **EcoEngineering**  
A division of The John R. McAdams Company, Inc.

RESEARCH TRIANGLE PARK, NC  
P.O. BOX 14005 ZIP 27709-4005  
(919) 361-5000



APPENDIX D

Stream Assessment Data

**Table 8a. Visual Morphological Stability Assessment  
Rocky Branch Stream Restoration Site/EEP Project Number: 308  
Rocky Branch: 3,751 Linear Feet**

Feature Category	Metric (per As-built and reference baselines)	(# Stable) Number Performing as Intended	Total number per As-built	Total Number / feet in unstable state	% Perform in Stable Condition	Feature Perform. Mean or Total
A. Riffles	1. Present ?	28	28	NA	100	
	2. Armor stable (e.g. no displacement)?	28	28	NA	100	
	3. Facet grade appears stable?	23	28	NA	82	
	4. Minimal evidence of embedding/fining?	28	28	NA	100	
	5. Length appropriate?	NA	NA	NA	NA	96
B. Pools	1. Present? (e.g. not subject to severe aggrad. or migrat.?)	25	27	NA	93	
	2. Sufficiently deep (Max Pool D:Mean Bkd>1.6?)	3.5 / 1.5 = 2.3	27	NA	89	
	3. Length appropriate?	23	27	NA	85	89
C. Thalweg	1. Upstream of meander bend (run/inflection) centering?	37	39	NA	95	
	2. Downstream of meander (glide/inflection) centering?	37	39	NA	93	94
D. Meander	1. Outer bend in state of limited/controlled erosion?	43	43	NA	100	
	2. Of those eroding, # w/concomitant point bar formation	43	43	NA	100	
	3. Apparent Rc within spec?	42	43	NA	98	
	4. Sufficient floodplain access and relief?	43	43	NA	100	100
E. Bed General	1. General channel bed aggradation areas (bar formation)	NA	NA	NA	100	
	2. Channel bed degradation - areas of increasing down-cutting or head cutting?	NA	NA	NA	100	100
F. Bank	1. Actively eroding, wasting, or slumping bank	NA	NA	5/90	98	98
	1. Free of bank or arm scour?	35	36	30	97	
	2. Height appropriate?	35	36	30	97	
	3. Angle and geometry appear appropriate?	35	36	30	97	
G. Vanes	4. Free of piping or other structural failures?	35	36	30	97	97
	1. Free of scour?	40	40	NA	100	
H. Wads/ Boulders	2. Footing stable?	40	40	NA	100	100

**Table 8b. Visual Morphological Stability Assessment  
Rocky Branch Stream Restoration Site/EEP Project Number: 308  
Rocky Branch Tributary 1: 172 Linear Feet**

Feature Category	Metric (per As-built and reference baselines)	(# Stable) Number Performing as Intended	Total number per As-built	Total Number / feet in unstable state	% Perform in Stable Condition	Feature Perform. Mean or Total
A. Rifles	1. Present?	3	3	NA	100	
	2. Armor stable (e.g. no displacement)?	3	3	NA	100	
	3. Facet grade appears stable?	3	3	NA	100	
	4. Minimal evidence of embedding/fining?	3	3	NA	100	
	5. Length appropriate?	NA	NA	NA	NA	100
B. Pools	1. Present? (e.g. not subject to severe aggrad. or migrat.?)	NA	NA	NA	NA	
	2. Sufficiently deep (Max Pool D:Mean Bkt>1.6')?	NA	NA	NA	NA	
	3. Length appropriate?	NA	NA	NA	NA	NA
C. Thalweg	1. Upstream of meander bend (run/inflection) centering?	4	4	NA	100	
	2. Downstream of meander (glide/inflection) centering?	3	4	NA	100	100
D. Meander	1. Outer bend in state of limited/controlled erosion?	5	5	NA	100	
	2. Of those eroding, # w/concomitant point bar formation	0	0	NA	100	
	3. Apparent Rc within spec?	5	5	NA	100	
	4. Sufficient floodplain access and relief?	5	5	NA	100	100
E. Bed General	1. General channel bed aggradation areas (bar formation)	NA	NA	NA	100	
	2. Channel bed degradation – areas of increasing down-cutting or head cutting?	NA	NA	NA	100	100
F. Bank	1. Actively eroding, wasting, or slumping bank	NA	NA	0/172	100	100
	1. Free of bank or arm scour?	3	3	NA	100	
	2. Height appropriate?	3	3	NA	100	
	3. Angle and geometry appear appropriate?	3	3	NA	100	
G. Vanes	4. Free of piping or other structural failures?	3	3	NA	100	100
	1. Free of scour?	NA	NA	NA	NA	NA
H. Wads/ Boulders	2. Footing stable?	NA	NA	NA	NA	NA

**Table 9. Verification of Bankfull Events  
Rocky Branch Stream Restoration Site/EEP Project Number: 308**

Date of Data Collection	Date of Occurrence	Method	Photo # (if available)
24-Sep-08	No occurrence	Observation	Not Available
2-Oct-09	Between 09/25/08 and 10/02/09	On-Site Crest Gage located at Station 33+08. Observed elevation on gage at elevation 918.99	Not Available
5-Aug-10	Between 10/02/09 and 08/05/10	On-Site Crest Gage located at Station 33+08. Observed elevation on gage at elevation 914.25	Not Available



PHOTO POINT 1. VIEW LOOKING SOUTH TOWARD DAIRY FACILITY.

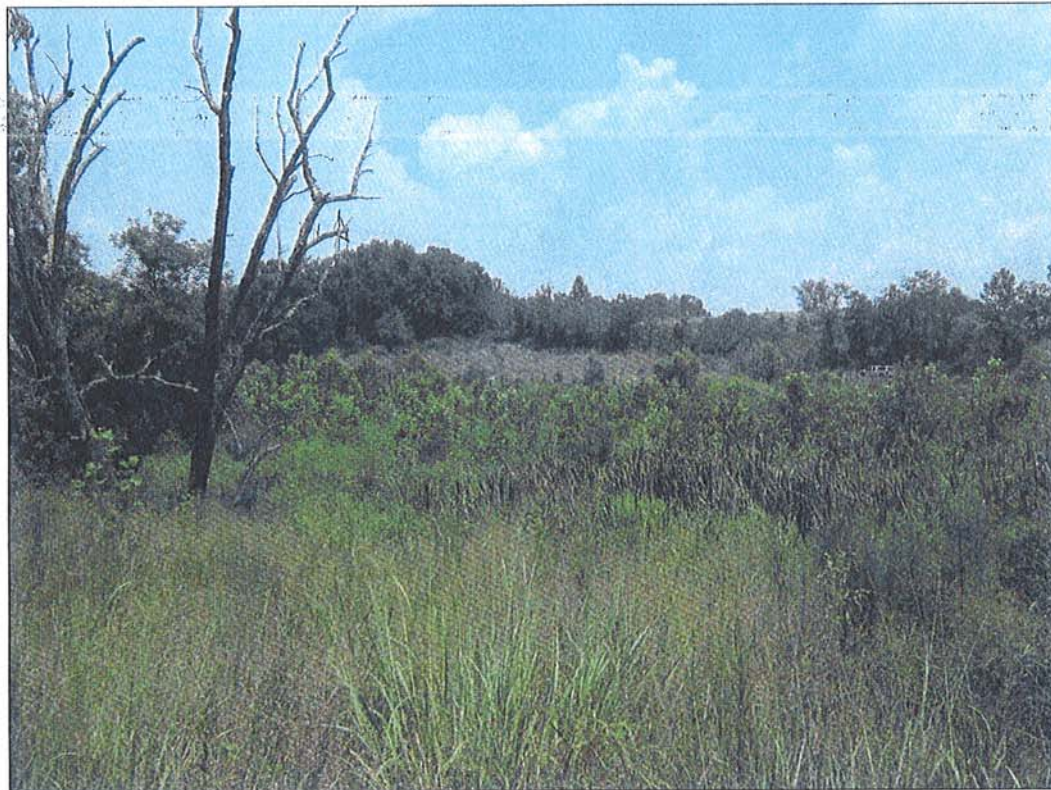


PHOTO POINT 2. VIEW LOOKING NORTH ACROSS NEW ROCKY BRANCH STREAM CHANNEL.

PROJECT NO. EEP-08020

FILENAME: EEP08020-EX1

SCALE: NTS

DATE: 08-11-10



**ROCKY BRANCH**  
**MONITORING PHOTOS**  
**YADKIN COUNTY, NORTH CAROLINA**

**EcoEngineering**  
 A division of The John R. McAdams Company, Inc.

RESEARCH TRIANGLE PARK, NC  
 P.O. BOX 14005 ZIP 27709-4005  
 (919) 361-5000





PHOTO POINT 2. VIEW LOOKING NORTHEAST ACROSS NEW EXISTING ROCKY BRANCH STREAM CHANNEL.



PHOTO POINT 3. VIEW LOOKING WEST TOWARD THE I-77 ROADWAY CORRIDOR.

McADAMS

PROJECT NO. EEP-08020

FILENAME: EEP08020-EX1

SCALE: NTS

DATE: 08-11-10



**ROCKY BRANCH**  
**MONITORING PHOTOS**  
**YADKIN COUNTY, NORTH CAROLINA**

**EcoEngineering**  
 A division of The John R. McAdams Company, Inc.

RESEARCH TRIANGLE PARK, NC  
 P.O. BOX 14005 ZIP 27709-4005  
 (919) 361-5000





PHOTO POINT 3. VIEW LOOKING SOUTH TOWARD HOMES LOCATED ALONG SR 1120.



PHOTO POINT 3. VIEW LOOKING EAST TOWARD WOODED AREA.

McADAMS

PROJECT NO. EEP-08020

FILENAME: EEP08020-EX1

SCALE: NTS

DATE: 08-11-10



**ROCKY BRANCH**  
**MONITORING PHOTOS**  
**YADKIN COUNTY, NORTH CAROLINA**



**EcoEngineering**  
 A division of The John R. McAdams Company, Inc.

RESEARCH TRIANGLE PARK, NC  
 P.O. BOX 14005 ZIP 27709-4005  
 (919) 361-5000





PHOTO POINT 4. VIEW LOOKING WEST THROUGH WOODED SECTION.



PHOTO POINT 4. VIEW LOOKING SOUTH TOWARD SR 1120.

PROJECT NO. EEP-08020

FILENAME: EEP08020-EX1

SCALE: NTS

DATE: 08-11-10



**ROCKY BRANCH**  
MONITORING PHOTOS  
YADKIN COUNTY, NORTH CAROLINA

 **EcoEngineering**  
A division of The John R. McAdams Company, Inc.

RESEARCH TRIANGLE PARK, NC  
P.O. BOX 14005 ZIP 27709-4005  
(919) 361-5000





PHOTO POINT 4. VIEW LOOKING EAST TOWARD NEWLY CONSTRUCTED TRIBUTARY I AND MAIN CHANNEL.



PHOTO POINT 5. VIEW LOOKING NORTHEAST ACROSS NEW ROCKY BRANCH STREAM CHANNEL.

PROJECT NO. EEP-08020

FILENAME: EEP08020-EX1

SCALE: NTS

DATE: 08-11-10



**ROCKY BRANCH**  
**MONITORING PHOTOS**  
 YADKIN COUNTY, NORTH CAROLINA



A division of The John R. McAdams Company, Inc.

RESEARCH TRIANGLE PARK, NC  
 P.O. BOX 14005 ZIP 27709-4005  
 (919) 361-5000





PHOTO POINT 5. VIEW LOOKING NORTH TOWARD NEWLY CONSTRUCTED TRIBUTARY 1.



PHOTO POINT 5. VIEW LOOKING NORTHEAST TOWARD NEW POND.

McADAMS

PROJECT NO. EEP-08020  
 FILENAME: EEP08020-EX1  
 SCALE: NTS  
 DATE: 08-11-10



**ROCKY BRANCH**  
 MONITORING PHOTOS  
 YADKIN COUNTY, NORTH CAROLINA

**EcoEngineering**  
 A division of The John R. McAdams Company, Inc.

RESEARCH TRIANGLE PARK, NC  
 P.O. BOX 14005 ZIP 27709-4005  
 (919) 361-5000





PHOTO POINT 6. VIEW LOOKING WEST TOWARD SR 1120.



PHOTO POINT 6. VIEW LOOKING SOUTH TOWARD SR 1120 AND JOE ALLEN RESIDENCE.

McADAMS

PROJECT NO. EEP-08020  
 FILENAME: EEP08020-EX1  
 SCALE: NTS  
 DATE: 08-11-10



**ROCKY BRANCH**  
 MONITORING PHOTOS  
 YADKIN COUNTY, NORTH CAROLINA

**EcoEngineering**  
 A division of The John R. McAdams Company, Inc.

RESEARCH TRIANGLE PARK, NC  
 P.O. BOX 14005 ZIP 27709-4005  
 (919) 361-5000





PHOTO POINT 6. VIEW LOOKING EAST TOWARD NEW POND.

PROJECT NO. EEP-08020

FILENAME: EEP08020-EX1

SCALE: NTS

DATE: 08-11-10



**ROCKY BRANCH**  
MONITORING PHOTOS  
YADKIN COUNTY, NORTH CAROLINA

 **EcoEngineering**  
A division of The John R. McAdams Company, Inc.

RESEARCH TRIANGLE PARK, NC  
P.O. BOX 14005 ZIP 27709-4005  
(919) 361-5000

McADAMS





CROSS SECTION 1 - POOL. (ROCKY BRANCH, STA 4 + 25) VIEW LOOKING DOWNSTREAM.



CROSS SECTION 2 - RIFFLE. (ROCKY BRANCH, STA 9 + 22) VIEW LOOKING DOWNSTREAM.

PROJECT NO. EEP-08020

FILENAME: EEP08020-EX1

SCALE: NTS

DATE: 08-11-10



**ROCKY BRANCH**  
**MONITORING PHOTOS**  
**YADKIN COUNTY, NORTH CAROLINA**



RESEARCH TRIANGLE PARK, NC  
 P.O. BOX 14005 ZIP 27709-4005  
 (919) 361-5000





CROSS SECTION 3 - POOL. (ROCKY BRANCH, STA 13 + 25) VIEW LOOKING DOWNSTREAM.



CROSS SECTION 4 - RIFFLE. (ROCKY BRANCH, STA 17 + 49) VIEW LOOKING DOWNSTREAM.

PROJECT NO. EEP-08020

FILENAME: EEP08020-EX1

SCALE: NTS

DATE: 08-11-10



**ROCKY BRANCH**  
MONITORING PHOTOS  
YADKIN COUNTY, NORTH CAROLINA

 **EcoEngineering**  
A division of The John R. McAdams Company, Inc.

RESEARCH TRIANGLE PARK, NC  
P.O. BOX 14005 ZIP 27709-4005  
(919) 361-5000





CROSS SECTION 5 - POOL. (ROCKY BRANCH, STA 22 + 32) VIEW LOOKING DOWNSTREAM.



CROSS SECTION 6 - RIFFLE. (ROCKY BRANCH, STA 26 + 22) VIEW LOOKING DOWNSTREAM.

McADAMS

PROJECT NO. EEP-08020  
 FILENAME: EEP08020-EX1  
 SCALE: NTS  
 DATE: 08-11-10



**ROCKY BRANCH**  
 MONITORING PHOTOS  
 YADKIN COUNTY, NORTH CAROLINA



**EcoEngineering**  
 A division of The John R. McAdams Company, Inc.

RESEARCH TRIANGLE PARK, NC  
 P.O. BOX 14005 ZIP 27709-4005  
 (919) 361-5000





CROSS SECTION 7 - RIFFLE. (ROCKY BRANCH, STA 30 + 75) VIEW LOOKING DOWNSTREAM.



CROSS SECTION 8 - RIFFLE. (TRIBUTARY 1, STA 0 + 75) VIEW LOOKING DOWNSTREAM.

McADAMS

PROJECT NO. EEP-08020  
 FILENAME: EEP08020-EX1  
 SCALE: NTS  
 DATE: 10-13-09



**ROCKY BRANCH**  
 MONITORING PHOTOS  
 YADKIN COUNTY, NORTH CAROLINA

**EcoEngineering**  
 A division of The John R. McAdams Company, Inc.

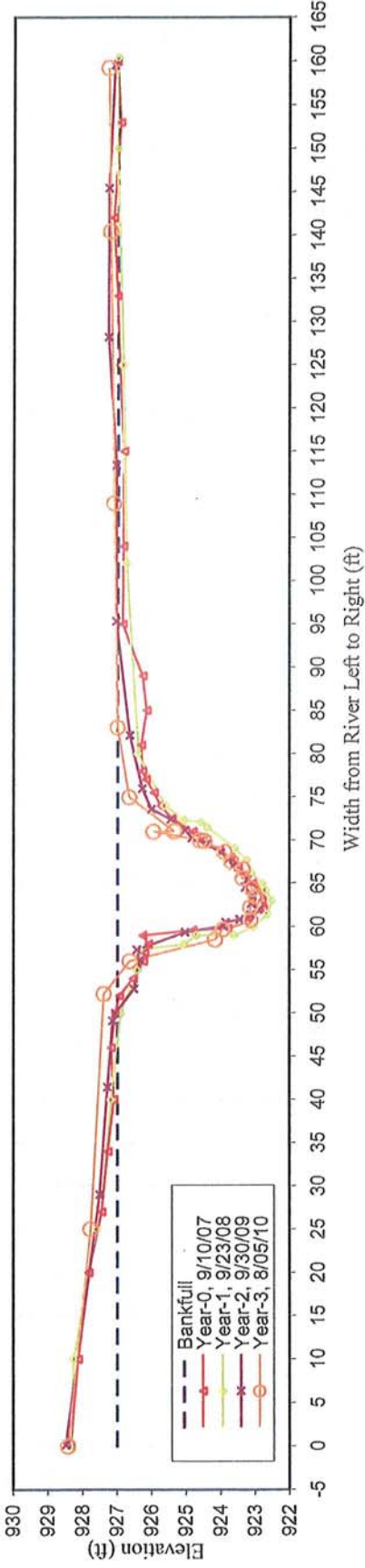
RESEARCH TRIANGLE PARK, NC  
 P.O. BOX 14005 ZIP 27709-4005  
 (919) 361-5000



ROCKY BRANCH		EEP PROJECT # 308										CROSS-SECTION: 1			
Year-0		Year-1		Year-2		Year-3		Year-4		Year-5		Year-6			
Station (ft)	Elev. (ft)	Station (ft)	Elev. (ft)	Station (ft)	Elev. (ft)	Station (ft)	Elev. (ft)	Station (ft)	Elev. (ft)	Station (ft)	Elev. (ft)	Station (ft)	Elev. (ft)		
0.00	928.33	0.00	928.33	-0.87	928.46	0.00	928.41								
10.00	928.12	10.00	928.26	28.76	927.50	25.04	927.76								
20.00	927.82	25.00	927.58	41.50	927.27	52.24	927.38								
27.00	927.44	40.00	927.18	49.38	927.13	56.04	926.62								
34.00	927.26	50.00	926.90	50.28	927.04	58.54	924.15								
40.00	927.08	55.00	926.41	53.16	926.49	59.69	923.93								
46.00	927.17	57.30	926.34	56.54	926.34	60.77	923.12								
50.00	927.05	58.00	925.08	57.83	926.41	62.26	923.13								
52.00	926.92	59.00	924.71	59.88	925.02	63.46	922.97								
54.00	926.52	59.00	923.62	60.60	923.92	64.36	923.07								
56.00	926.22	60.00	923.05	61.05	923.84	65.61	923.36								
57.00	926.19	61.40	922.64	61.39	923.44	66.63	923.33								
58.00	926.08	63.00	922.52	61.96	923.12	67.55	923.69								
59.00	926.25	64.20	922.68	62.54	922.90	68.67	923.88								
59.60	924.80	65.00	922.80	63.27	923.10	69.93	924.46								
59.80	923.79	66.20	923.12	64.16	923.07	70.00	924.60								
60.50	923.25	67.70	923.26	65.20	923.28	71.00	925.94								
61.00	923.19	69.10	923.61	66.11	923.20	71.03	925.34								
62.00	922.75	71.50	924.40	66.81	923.47	74.99	926.64								
63.00	922.78	72.10	924.58	67.78	923.63	83.04	926.98								
64.00	922.83	72.30	925.06	68.58	923.75	109.00	927.09								
65.00	923.07	74.00	925.62	69.35	923.99	140.48	927.20								
66.00	923.29	80.00	926.38	70.31	924.40	159.25	927.26								
67.00	923.49	102.00	926.74	71.07	924.82										
68.00	923.71	125.00	926.84	71.99	925.02										
69.00	924.04	150.00	927.02	73.27	925.43										
70.00	924.50	160.40	926.99	74.49	925.99										
71.00	924.80			76.91	926.26										
72.50	925.40			83.25	926.62										
74.00	925.73			96.79	927.03										
75.50	925.92			115.30	927.03										
77.00	926.15			130.50	927.26										
78.00	926.26			148.17	927.26										
81.00	926.29			162.68	927.08										
85.00	926.13														
89.00	926.25														
95.00	926.83														
104.00	926.81														
115.00	926.80														
125.00	926.92														
133.00	927.00														
142.00	927.11														
153.00	926.91														
160.00	927.02														



Rocky Branch Cross Section 1 - Pool



CROSS SECTION PLOT - LOOKING DOWNSTREAM

YEAR-3, 2010 SURVEY DATA	CROSS-SECTION:	1
PROJECT	ROCKY BRANCH	Pool
TASK	CROSS SECTION	
REACH	ROCKY BRANCH	
DATE	8/02/10 to 8/05/10	
CREW	BUCHHOLZ/PARRISH/PICKENS	

Summary Data

All dimensions in feet.

Bankfull X-sec area	51.4	sq. ft.
Bankfull Width	28.8	ft.
Bankfull Mean Depth	1.8	ft.
Bankfull Max Depth	4.0	ft.
Width/Depth Ratio	>12	
Entrenchment Ratio	>2.2	
Classification	n/a	
Bank Height Ratio	1.0	
Bankfull Elevation:	926.98	ft.

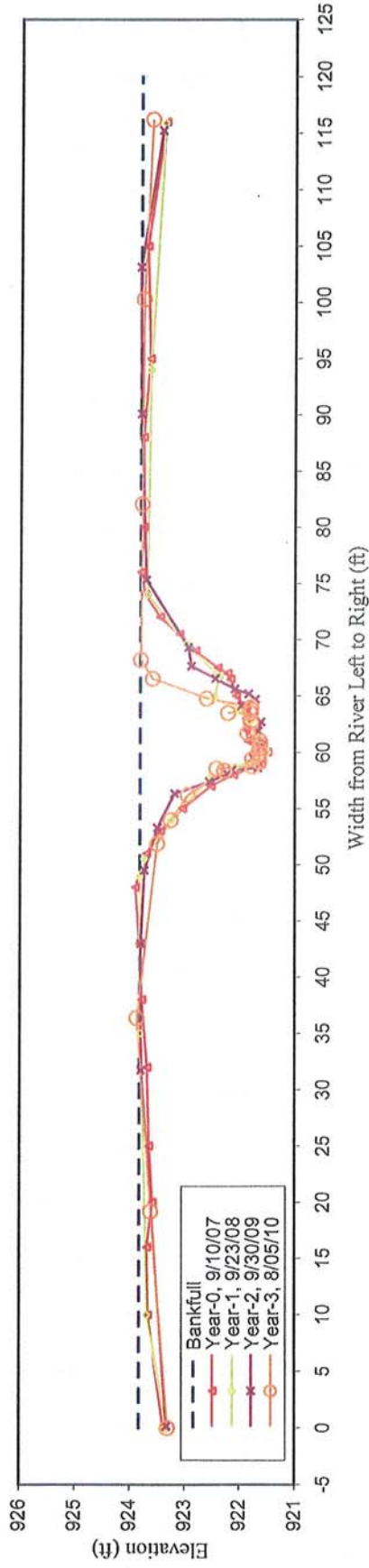


CROSS SECTION PHOTO - LOOKING DOWNSTREAM

<b>ROCKY BRANCH</b>		<b>EEP PROJECT # 308</b>		<b>CROSS-SECTION: 2</b>									
<b>Year-0</b>		<b>Year-1</b>		<b>Year-2</b>		<b>Year-3</b>		<b>Year-4</b>		<b>Year-5</b>		<b>Year-6</b>	
Station (ft)	Elev. (ft)	Station (ft)	Elev. (ft)	Station (ft)	Elev. (ft)	Station (ft)	Elev. (ft)	Station (ft)	Elev. (ft)	Station (ft)	Elev. (ft)	Station (ft)	Elev. (ft)
0.00	923.38	0.00	923.32	0.15	923.32	0.00	923.30						
10.00	923.66	10.00	923.68	31.73	923.79	19.21	923.61						
16.00	923.68	35.00	923.81	42.99	923.80	36.40	923.87						
20.00	923.58	49.00	923.82	49.52	923.74	51.90	923.50						
25.00	923.64	50.50	923.74	53.28	923.50	53.97	923.26						
32.00	923.68	54.00	923.26	56.32	923.19	56.20	922.95						
38.00	923.78	57.70	922.56	57.37	922.55	58.38	922.28						
43.00	923.82	58.70	922.08	58.06	922.22	58.54	922.42						
48.00	923.90	59.30	921.70	58.46	922.14	58.73	921.77						
51.00	923.70	60.00	921.51	58.60	921.68	59.18	921.64						
53.00	923.45	61.30	921.66	59.54	921.77	59.43	921.77						
55.00	923.05	62.70	921.82	60.76	921.58	59.93	921.64						
57.00	922.52	63.80	922.04	61.91	921.67	60.31	921.64						
58.00	922.11	64.80	922.48	62.71	921.62	60.67	921.63						
59.00	921.61	66.70	922.38	64.14	921.97	61.02	921.63						
60.00	921.50	69.60	922.98	64.70	921.72	61.72	921.86						
60.50	921.58	74.00	923.70	65.19	921.84	62.68	921.80						
61.00	921.85	94.00	923.65	65.63	922.09	63.48	921.80						
62.00	921.89	115.90	923.38	66.55	922.44	63.50	922.21						
63.00	921.88			67.65	922.89	63.78	921.80						
64.00	921.90			69.31	922.94	64.02	921.79						
65.00	922.07			75.32	923.71	64.78	922.60						
66.50	922.17			90.09	923.81	66.55	923.59						
67.00	922.22			103.15	923.83	68.21	923.81						
67.50	922.40			115.26	923.43	82.06	923.79						
69.00	922.81					100.31	923.77						
70.50	923.11					116.25	923.61						
72.00	923.46												
74.00	923.73												
76.00	923.81												
80.00	923.76												
88.00	923.77												
95.00	923.65												
105.00	923.70												
116.00	923.37												



Rocky Branch Cross Section 2 - Riffle



CROSS SECTION PLOT - LOOKING DOWNSTREAM



CROSS SECTION PHOTO - LOOKING DOWNSTREAM

YEAR-3, 2010 SURVEY DATA CROSS-SECTION: 2  
 PROJECT ROCKY BRANCH FEATURE: Riffle  
 TASK CROSS SECTION  
 REACH ROCKY BRANCH  
 DATE 8/02/10 to 8/05/10  
 CREW BUCHHOLZ/PARRISH/PICKENS

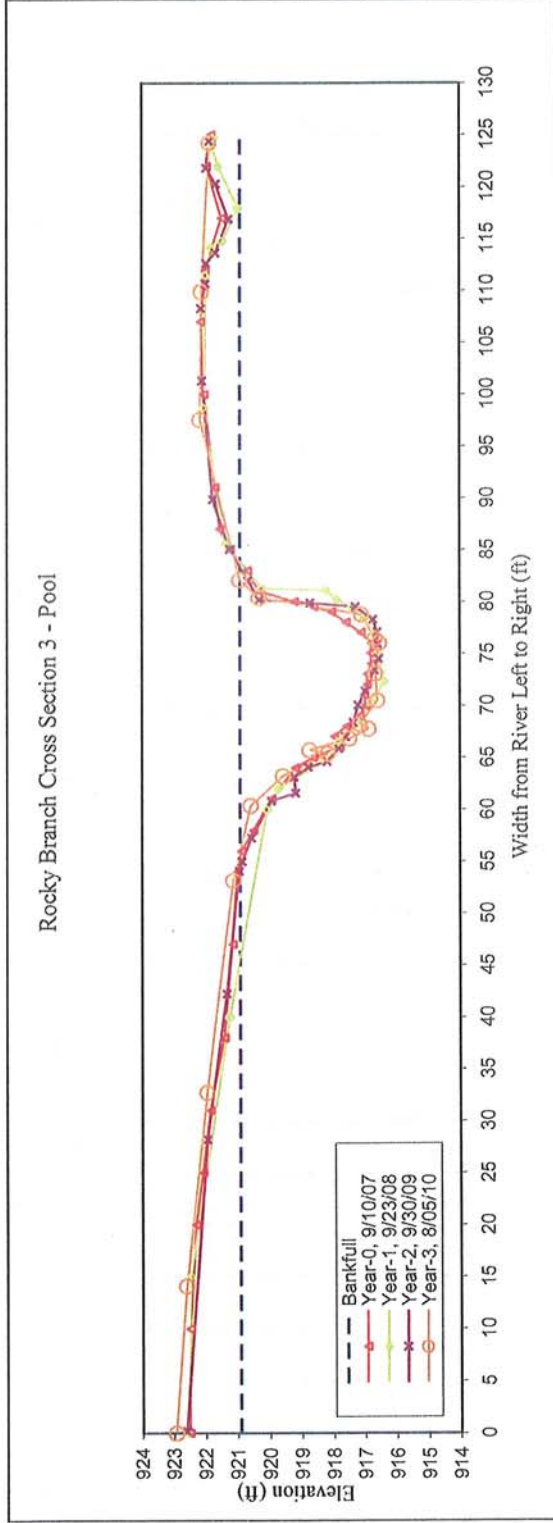
Summary Data

All dimensions in feet.

Bankfull X-sec area	18.5	sq. ft.
Bankfull Width	36.4	ft.
Bankfull Mean Depth	0.5	ft.
Bankfull Max Depth	2.0	ft.
Width/Depth Ratio	>12	
Entrenchment Ratio	>2.2	
Classification	C	
Bank Height Ratio	1.0	
Bankfull Elevation:	923.82	ft.

<b>ROCKY BRANCH</b>		<b>EEP PROJECT # 308</b>		<b>CROSS-SECTION: 3</b>									
<b>Year-0</b>		<b>Year-1</b>		<b>Year-2</b>		<b>Year-3</b>		<b>Year-4</b>		<b>Year-5</b>		<b>Year-6</b>	
Station (ft)	Elev. (ft)	Station (ft)	Elev. (ft)	Station (ft)	Elev. (ft)	Station (ft)	Elev. (ft)	Station (ft)	Elev. (ft)	Station (ft)	Elev. (ft)	Station (ft)	Elev. (ft)
0.00	922.51	0.00	922.56	0.18	922.60	0.00	922.92						
10.00	922.49	15.00	922.46	28.22	921.93	14.12	922.59						
20.00	922.29	40.00	921.25	42.24	921.31	32.74	921.94						
25.00	922.08	60.00	920.08	54.05	920.93	53.17	921.11						
31.00	921.84	62.00	919.73	54.98	920.84	60.38	920.57						
38.00	921.40	64.70	918.25	57.25	920.55	63.24	919.57						
47.00	921.14	66.50	917.81	60.83	919.94	65.39	918.16						
54.00	920.99	68.20	917.24	61.58	919.18	65.71	918.73						
56.00	920.86	70.30	916.79	63.10	919.23	66.84	917.47						
58.00	920.49	72.30	916.39	64.06	918.77	67.75	916.86						
61.00	919.93	73.20	916.49	64.63	918.17	68.21	917.14						
64.00	919.19	75.10	916.55	65.86	917.80	70.48	916.58						
65.00	918.62	76.90	916.71	67.00	917.59	73.07	916.64						
66.00	917.77	78.30	917.03	68.37	917.35	76.03	916.52						
67.00	917.96	79.40	917.41	70.02	917.20	76.46	916.66						
68.00	917.56	80.20	917.89	71.38	916.97	78.77	917.09						
69.00	917.15	81.10	918.24	73.39	916.68	80.37	920.31						
70.00	916.96	81.30	920.24	74.49	916.55	82.12	920.91						
71.00	917.00	85.60	921.37	75.91	916.57	97.56	922.15						
72.00	916.92	98.70	922.04	77.07	916.59	109.91	922.11						
73.00	916.92	111.50	921.97	78.28	916.73		921.86						
74.00	916.78	114.20	921.83	79.50	917.28								
75.00	916.81	114.80	921.47	79.87	918.71								
76.00	916.77	118.00	920.99	80.18	920.30								
77.00	917.11	122.00	921.59	82.06	920.65								
78.00	917.58	124.00	921.79	85.06	921.21								
79.00	918.04	124.70	921.72	89.88	921.75								
79.50	918.60			101.33	922.10								
80.00	919.22			108.30	922.13								
81.00	920.29			110.69	921.98								
83.00	920.67			112.65	921.96								
85.00	921.20			113.67	921.65								
87.00	921.53			116.93	921.25								
91.00	921.68			120.30	921.65								
100.00	922.03			121.83	921.96								
107.00	922.13			124.42	921.86								
112.00	921.99												
117.00	921.47												
122.00	921.94												
125.00	921.80												





**CROSS SECTION PLOT - LOOKING DOWNSTREAM**



**CROSS SECTION PHOTO - LOOKING DOWNSTREAM**

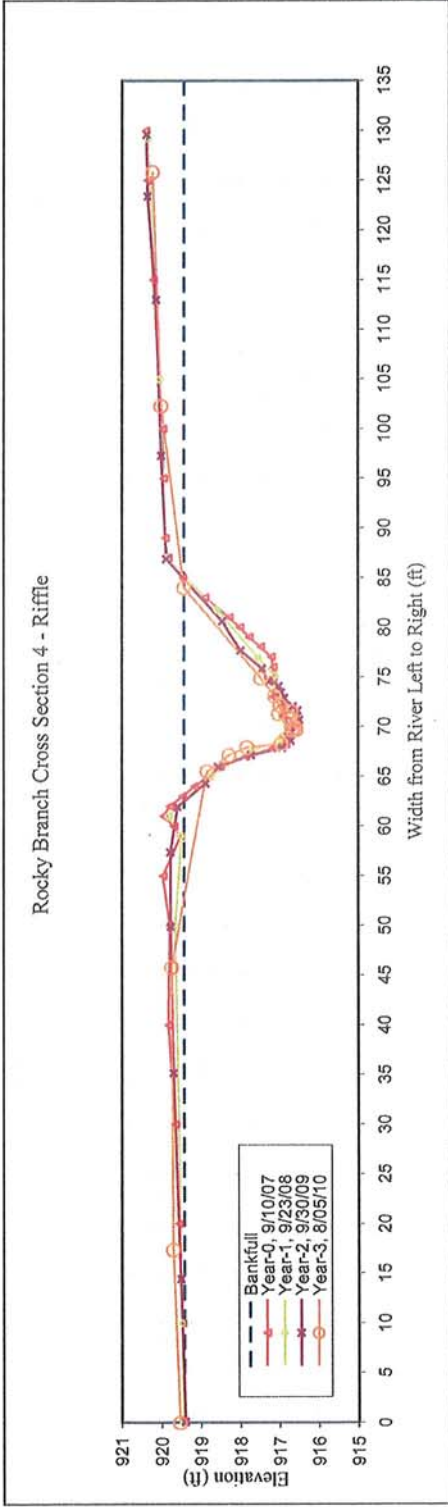
CROSS-SECTION: 3  
 FEATURE: Pool

ROCKY BRANCH  
 CROSS SECTION  
 ROCKY BRANCH  
 8/02/10 to 8/05/10  
 BUCHHOLZ/PARRISH/PICKENS

65.1	sq. ft.
26.3	ft.
2.5	ft.
4.4	ft.
10.6	
>2.2	
n/a	
1.0	
920.91	ft.

<b>ROCKY BRANCH</b>		<b>EEP PROJECT # 308</b>										<b>CROSS-SECTION: 4</b>	
<b>Year-0</b>		<b>Year-1</b>		<b>Year-2</b>		<b>Year-3</b>		<b>Year-4</b>		<b>Year-5</b>		<b>Year-6</b>	
<u>Station (ft)</u>	<u>Elev. (ft)</u>	<u>Station (ft)</u>	<u>Elev. (ft)</u>	<u>Station (ft)</u>	<u>Elev. (ft)</u>	<u>Station (ft)</u>	<u>Elev. (ft)</u>	<u>Station (ft)</u>	<u>Elev. (ft)</u>	<u>Station (ft)</u>	<u>Elev. (ft)</u>	<u>Station (ft)</u>	<u>Elev. (ft)</u>
0.00	919.45	0.00	919.46	0.08	919.40	0.00	919.54						
10.00	919.48	10.00	919.48	14.42	919.51	17.36	919.71						
20.00	919.57	50.00	919.67	35.15	919.70	45.79	919.75						
30.00	919.66	59.00	919.51	49.90	919.78	65.51	918.84						
40.00	919.83	61.00	919.82	57.38	919.78	67.15	918.28						
50.00	919.80	65.00	918.77	61.95	919.60	67.91	917.83						
55.00	919.97	67.60	917.73	64.28	918.88	68.27	916.95						
59.00	919.52	68.50	917.06	65.96	918.56	69.65	916.66						
60.00	919.69	69.00	916.96	67.13	917.73	69.69	916.56						
61.00	919.95	70.00	916.80	67.85	916.92	69.93	916.59						
62.00	919.80	70.90	916.58	68.55	916.70	70.76	916.73						
63.00	919.47	71.80	916.77	69.40	916.70	70.90	916.71						
64.00	919.16	72.80	916.99	70.18	916.74	71.29	917.02						
65.00	918.80	74.00	917.08	70.68	916.48	71.54	916.69						
66.00	918.51	75.10	917.12	71.60	916.52	72.16	916.98						
67.00	917.87	76.90	917.55	72.03	916.65	73.05	917.12						
67.80	917.18	81.70	918.58	72.86	916.87	74.87	917.48						
68.20	916.83	87.00	919.87	73.44	916.95	84.02	919.43						
69.00	916.92	105.00	920.05	74.05	917.02	102.32	920.01						
70.00	916.77	129.20	920.36	74.55	917.28	125.87	920.23						
70.50	916.55			75.81	917.44								
71.00	916.92			77.67	917.99								
72.00	916.96			80.62	918.46								
73.00	917.16			86.88	919.88								
75.00	917.16			97.29	920.01								
76.00	917.16			113.02	920.14								
77.00	917.21			123.42	920.36								
78.00	917.48			129.63	920.39								
79.00	917.78												
80.00	918.01												
81.00	918.28												
83.00	918.90												
85.00	919.46												
87.00	919.84												
89.00	919.91												
95.00	919.95												
100.00	919.97												
115.00	920.21												
125.00	920.36												
130.00	920.41												





CROSS SECTION PLOT - LOOKING DOWNSTREAM

YEAR-3, 2010 SURVEY DATA CROSS-SECTION: 4

PROJECT ROCKY BRANCH FEATURE: Riffle

TASK CROSS SECTION

REACH ROCKY BRANCH

DATE 8/02/10 to 8/05/10

CREW BUCHHOLZ/PARRISH/PICKENS

**Summary Data**  
 All dimensions in feet.

Bankfull X-sec area 32.2 sq. ft.  
 Bankfull Width 31.3 ft.  
 Bankfull Mean Depth 1.0 ft.  
 Bankfull Max Depth 2.9 ft.  
 Width/Depth Ratio >12  
 Entrenchment Ratio >2.2  
 Classification C  
 Bank Height Ratio 1.0  
 Bankfull Elevation: 919.43 ft.

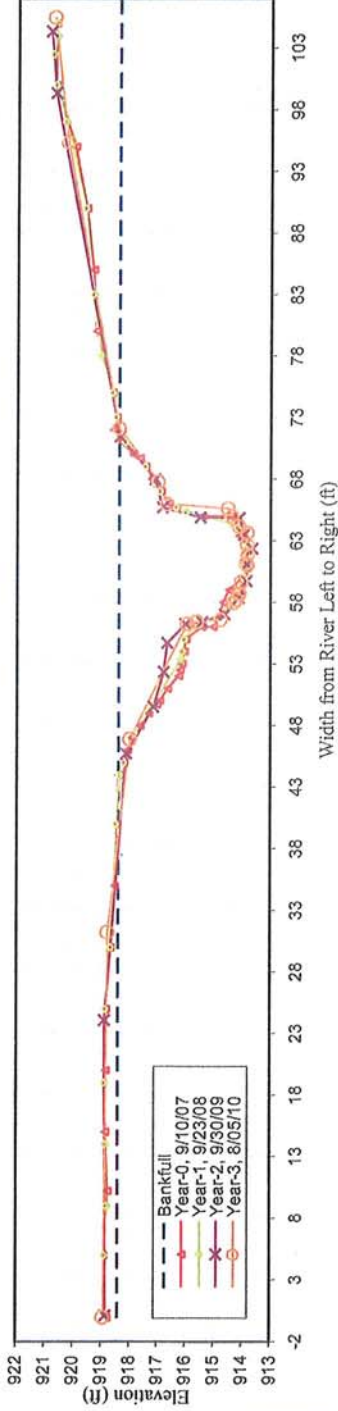


CROSS SECTION PHOTO - LOOKING DOWNSTREAM

ROCKY BRANCH		EEP PROJECT # 308		CROSS-SECTION: 5									
Year-0		Year-1		Year-2		Year-3		Year-4		Year-5		Year-6	
Station (ft)	Elev. (ft)	Station (ft)	Elev. (ft)	Station (ft)	Elev. (ft)	Station (ft)	Elev. (ft)	Station (ft)	Elev. (ft)	Station (ft)	Elev. (ft)	Station (ft)	Elev. (ft)
0.00	918.78	0.00	918.78	0.13	918.83	0.00	918.91						
5.00	918.89	5.00	918.87	24.09	918.87	31.24	918.77						
10.20	918.75	9.00	918.79	45.71	918.12	46.90	918.00						
15.00	918.84	14.00	918.84	49.52	917.16	56.27	915.96						
20.00	918.83	19.00	918.89	52.33	916.78	56.45	915.62						
25.00	918.82	25.00	918.85	54.69	916.65	56.60	914.76						
30.00	918.67	30.00	918.66	56.24	916.01	57.94	914.32						
35.00	918.54	40.00	918.49	56.38	915.42	58.23	914.20						
40.00	918.47	44.00	918.36	57.01	914.62	58.69	914.10						
45.00	918.39	45.00	918.21	58.34	914.13	59.68	914.03						
46.00	918.20	47.40	917.83	59.73	913.84	61.00	913.81						
47.00	917.91	49.50	917.23	61.07	913.84	61.15	913.89						
48.00	917.63	53.40	916.19	62.34	913.64	61.94	913.81						
49.00	917.32	54.00	916.14	63.50	913.95	62.71	913.83						
49.70	917.03	55.00	916.05	64.85	914.11	63.66	913.82						
50.00	916.91	56.40	915.43	65.71	916.83	64.17	914.10						
51.00	916.64	57.30	914.62	67.98	917.11	65.03	914.38						
52.00	916.25	60.00	913.93	71.44	918.37	65.62	914.50						
52.50	916.21	61.10	913.82	99.35	920.66	67.81	916.67						
53.00	916.14	61.80	913.83	104.36	920.82	72.16	918.41						
54.00	916.06	62.60	913.81			95.42	920.22						
55.00	916.00	64.00	914.17			105.50	920.70						
56.00	915.43	64.40	914.41										
56.00	915.02	65.30	916.02										
57.00	914.78	65.70	916.36										
58.00	914.67	67.00	916.93										
59.00	914.47	69.00	917.47										
60.00	913.99	71.00	918.17										
60.80	913.85	73.00	918.51										
61.00	913.83	75.00	918.63										
62.00	913.90	78.00	919.06										
63.00	913.89	83.00	919.33										
63.40	914.12	90.00	919.60										
64.00	914.14	97.00	920.30										
64.80	914.35	100.00	920.65										
65.00	914.59	102.50	920.77										
65.00	915.43	104.00	920.65										
65.60	916.37	105.00	920.64										
66.00	916.61												
67.00	916.89												
68.00	917.24												
69.00	917.47												
69.70	917.67												
70.00	917.92												
71.00	918.32												
72.00	918.61												
73.00	918.50												
75.00	918.64												
80.00	919.21												
85.00	919.31												
90.00	919.57												
95.00	919.98												
100.00	920.66												
105.00	920.67												



Rocky Branch Cross Section 5 - Pool



CROSS SECTION PLOT - LOOKING DOWNSTREAM

YEAR-3, 2010 SURVEY DATA      CROSS-SECTION:      5

PROJECT    ROCKY BRANCH      FEATURE:      Pool

TASK      CROSS SECTION

REACH    ROCKY BRANCH

DATE      8/02/10 to 8/05/10

CREW      BUCHHOLZ/PARRISH/PICKENS

**Summary Data**  
 All dimensions in feet.

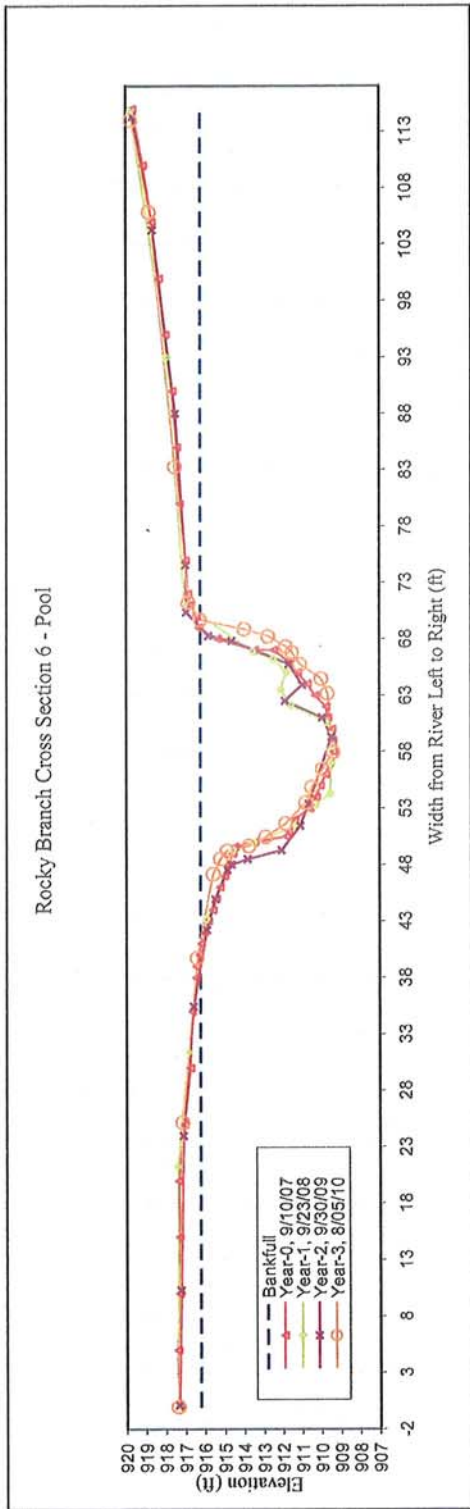
Bankfull X-sec area	62.0	sq. ft.
Bankfull Width	33.6	ft.
Bankfull Mean Depth	1.8	ft.
Bankfull Max Depth	4.6	ft.
Width/Depth Ratio	>12	
Entrenchment Ratio	>2.2	
Classification	n/a	
Bank Height Ratio	1.0	
Bankfull Elevation:	918.41	ft.



CROSS SECTION PHOTO - LOOKING DOWNSTREAM

ROCKY BRANCH		EEP PROJECT # 308										CROSS-SECTION: 6	
Year-0		Year-1		Year-2		Year-3		Year-4		Year-5		Year-6	
Station (ft)	Elev. (ft)	Station (ft)	Elev. (ft)	Station (ft)	Elev. (ft)	Station (ft)	Elev. (ft)	Station (ft)	Elev. (ft)	Station (ft)	Elev. (ft)	Station (ft)	Elev. (ft)
0.00	917.33	0.00	917.32	0.13	917.32	0.00	917.36	0.00	917.36	0.00	917.36	0.00	917.36
5.00	917.39	21.30	917.41	10.28	917.22	25.21	917.13	25.21	917.13	25.21	917.13	25.21	917.13
10.00	917.30	31.40	916.85	23.98	917.10	39.75	916.39	39.75	916.39	39.75	916.39	39.75	916.39
15.00	917.30	43.20	915.88	35.45	916.57	47.19	915.56	47.19	915.56	47.19	915.56	47.19	915.56
20.00	917.34	49.30	914.54	42.22	915.86	48.56	915.17	48.56	915.17	48.56	915.17	48.56	915.17
25.00	917.05	50.00	913.46	44.96	915.44	49.27	914.84	49.27	914.84	49.27	914.84	49.27	914.84
30.00	916.73	51.50	911.26	47.53	914.83	50.48	912.87	50.48	912.87	50.48	912.87	50.48	912.87
35.00	916.65	53.30	910.28	48.03	914.62	53.51	910.77	53.51	910.77	53.51	910.77	53.51	910.77
38.00	916.44	54.30	909.55	48.50	913.79	54.90	910.47	54.90	910.47	54.90	910.47	54.90	910.47
39.00	916.41	57.00	909.46	49.28	912.03	56.47	909.91	56.47	909.91	56.47	909.91	56.47	909.91
40.00	916.27	58.30	909.36	51.43	911.04	58.02	909.33	58.02	909.33	58.02	909.33	58.02	909.33
41.00	916.16	59.50	909.47	53.37	910.64	63.20	909.64	63.20	909.64	63.20	909.64	63.20	909.64
42.00	916.04	60.60	909.72	59.31	909.45	65.77	911.07	65.77	911.07	65.77	911.07	65.77	911.07
43.00	915.80	62.10	911.56	61.03	909.93	67.36	911.81	67.36	911.81	67.36	911.81	67.36	911.81
44.00	915.58	63.50	912.12	62.50	911.85	68.23	912.73	68.23	912.73	68.23	912.73	68.23	912.73
45.00	915.40	65.10	911.80	63.94	910.95	68.88	913.95	68.88	913.95	68.88	913.95	68.88	913.95
46.00	915.21	66.20	912.49	65.75	911.65	69.71	916.22	69.71	916.22	69.71	916.22	69.71	916.22
47.00	914.98	66.90	913.53	67.82	914.59	71.27	916.82	71.27	916.82	71.27	916.82	71.27	916.82
48.00	914.80	71.10	917.04	68.27	915.78	83.31	917.51	83.31	917.51	83.31	917.51	83.31	917.51
49.00	914.57	93.00	917.93	70.38	916.93	105.89	918.81	105.89	918.81	105.89	918.81	105.89	918.81
49.60	914.45	114.70	919.76	74.57	916.96	114.00	919.74	114.00	919.74	114.00	919.74	114.00	919.74
50.00	913.45												
50.50	911.79												
51.00	911.68												
52.00	911.35												
53.00	910.55												
54.00	910.23												
55.00	910.03												
56.00	909.73												
57.00	909.55												
58.00	909.35												
59.00	909.38												
60.00	909.43												
61.00	909.63												
62.00	909.73												
63.00	910.28												
64.00	910.69												
65.00	911.20												
66.00	911.64												
67.00	912.44												
67.00	913.43												
68.00	915.32												
69.00	916.28												
70.00	916.41												
71.00	916.74												
72.00	916.84												
75.00	916.96												
80.00	917.28												
85.00	917.4												
90.00	917.63												
95.00	917.98												
100.00	918.32												
105.00	918.68												
110.00	919.11												
115.00	919.66												





CROSS SECTION PLOT - LOOKING DOWNSTREAM

YEAR-3, 2010 SURVEY DATA CROSS-SECTION: 6  
 PROJECT ROCKY BRANCH FEATURE: Pool  
 TASK CROSS SECTION  
 REACH ROCKY BRANCH  
 DATE 8/02/10 to 8/05/10  
 CREW BUCHHOLZ/PARRISH/PICKENS

Summary Data  
 All dimensions in feet.

Bankfull X-sec area	112.6	sq. ft.
Bankfull Width	28.4	ft.
Bankfull Mean Depth	4.0	ft.
Bankfull Max Depth	6.9	ft.
Width/Depth Ratio	7.2	
Entrenchment Ratio	>2.2	
Classification	n/a	
Bank Height Ratio	1.0	
Bankfull Elevation:	916.22	ft.

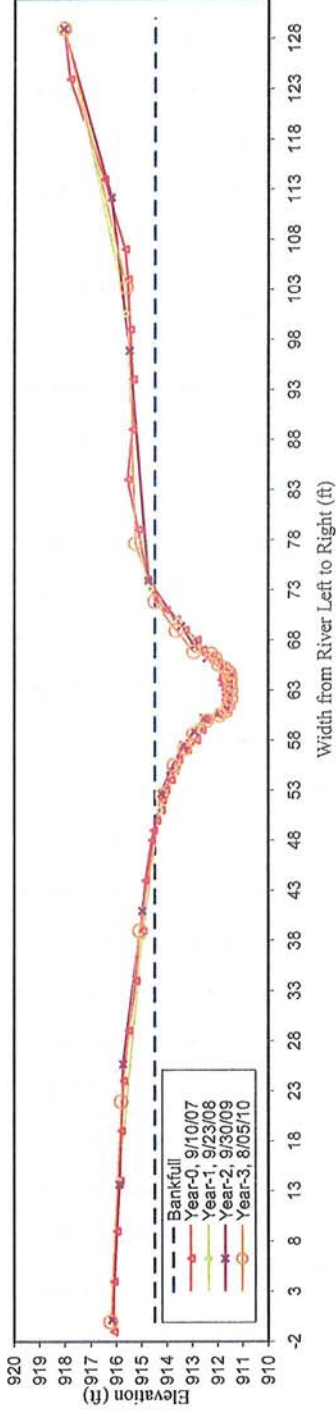


CROSS SECTION PHOTO - LOOKING DOWNSTREAM

ROCKY BRANCH		EEP PROJECT # 308										CROSS-SECTION: 7					
		Year-0		Year-1		Year-2		Year-3		Year-4				Year-5		Year-6	
Station (ft)	Elev. (ft)	Station (ft)	Elev. (ft)	Station (ft)	Elev. (ft)	Station (ft)	Elev. (ft)	Station (ft)	Elev. (ft)	Station (ft)	Elev. (ft)	Station (ft)	Elev. (ft)	Station (ft)	Elev. (ft)	Station (ft)	Elev. (ft)
-1.00	916.10	0.00	916.17	0.16	916.17	0.16	916.17	0.00	916.23	0.00	916.23	0.00	916.23	0.00	916.23	0.00	916.23
4.00	916.10	14.00	915.91	13.66	915.89	13.66	915.89	21.98	915.81	21.98	915.81	21.98	915.81	21.98	915.81	21.98	915.81
9.00	915.99	38.40	915.01	25.66	915.74	25.66	915.74	39.02	915.08	39.02	915.08	39.02	915.08	39.02	915.08	39.02	915.08
14.00	915.87	51.00	914.29	40.96	914.98	40.96	914.98	52.54	914.21	52.54	914.21	52.54	914.21	52.54	914.21	52.54	914.21
19.00	915.82	55.00	913.65	52.67	914.22	52.67	914.22	55.51	913.72	55.51	913.72	55.51	913.72	55.51	913.72	55.51	913.72
24.00	915.73	24.00	912.83	59.30	912.83	59.30	912.83	55.00	913.86	57.18	913.30	57.18	913.30	57.18	913.30	57.18	913.30
29.00	915.52	60.70	911.77	57.47	913.35	57.47	913.35	58.62	912.95	58.62	912.95	58.62	912.95	58.62	912.95	58.62	912.95
34.00	915.23	61.50	911.52	58.84	912.92	58.84	912.92	59.97	912.44	59.97	912.44	59.97	912.44	59.97	912.44	59.97	912.44
39.00	914.97	63.10	911.47	60.20	912.55	60.20	912.55	60.47	911.91	60.47	911.91	60.47	911.91	60.47	911.91	60.47	911.91
44.00	914.87	64.30	911.64	60.68	911.95	60.68	911.95	60.96	911.66	60.96	911.66	60.96	911.66	60.96	911.66	60.96	911.66
48.00	914.61	65.20	911.87	61.09	911.60	61.09	911.60	61.49	911.55	61.49	911.55	61.49	911.55	61.49	911.55	61.49	911.55
49.00	914.54	65.80	912.15	61.90	911.61	61.90	911.61	62.14	911.45	62.14	911.45	62.14	911.45	62.14	911.45	62.14	911.45
50.00	914.40	69.80	913.55	62.69	911.58	62.69	911.58	62.96	911.46	62.96	911.46	62.96	911.46	62.96	911.46	62.96	911.46
51.00	914.22	73.10	914.65	63.56	911.52	63.56	911.52	63.62	911.48	63.62	911.48	63.62	911.48	63.62	911.48	63.62	911.48
52.00	914.18	100.60	915.62	64.63	911.41	64.63	911.41	64.19	911.48	64.19	911.48	64.19	911.48	64.19	911.48	64.19	911.48
53.00	914.04	129.00	918.03	65.32	911.75	65.32	911.75	64.72	911.50	64.72	911.50	64.72	911.50	64.72	911.50	64.72	911.50
54.00	913.83			66.17	912.42	66.17	912.42	65.16	911.70	65.16	911.70	65.16	911.70	65.16	911.70	65.16	911.70
55.00	913.71			67.42	912.92	67.42	912.92	65.53	911.96	65.53	911.96	65.53	911.96	65.53	911.96	65.53	911.96
56.00	913.54			69.36	913.44	69.36	913.44	66.18	912.09	66.18	912.09	66.18	912.09	66.18	912.09	66.18	912.09
57.00	913.20			73.93	914.75	73.93	914.75	66.58	912.25	66.58	912.25	66.58	912.25	66.58	912.25	66.58	912.25
58.00	912.84			96.87	915.50	96.87	915.50	66.83	912.95	66.83	912.95	66.83	912.95	66.83	912.95	66.83	912.95
59.00	912.63			112.20	916.22	112.20	916.22	68.95	913.64	68.95	913.64	68.95	913.64	68.95	913.64	68.95	913.64
60.00	912.47			129.00	918.08	129.00	918.08	71.85	914.49	71.85	914.49	71.85	914.49	71.85	914.49	71.85	914.49
60.50	911.93							77.62	915.26	77.62	915.26	77.62	915.26	77.62	915.26	77.62	915.26
61.00	911.72							103.21	915.62	103.21	915.62	103.21	915.62	103.21	915.62	103.21	915.62
61.50	911.62							129.05	918.07	129.05	918.07	129.05	918.07	129.05	918.07	129.05	918.07
62.00	911.69																
62.50	911.67																
63.00	911.71																
63.50	911.81																
64.00	911.86																
65.00	911.93																
65.70	912.07																
66.50	912.19																
67.00	912.60																
68.00	912.82																
69.00	913.29																
70.00	913.63																
71.00	914.03																
72.00	914.39																
73.00	914.63																
74.00	914.77																
79.00	915.16																
84.00	915.58																
89.00	915.39																
94.00	915.36																
99.00	915.48																
104.00	915.56																
107.00	915.68																
114.00	916.5																
124.00	917.84																
129.00	918.06																



Rocky Branch Cross Section 7 - Riffle



CROSS SECTION PLOT - LOOKING DOWNSTREAM

YEAR-3, 2010 SURVEY DATA CROSS-SECTION: 7

PROJECT ROCKY BRANCH FEATURE: Riffle  
 TASK CROSS SECTION  
 REACH ROCKY BRANCH  
 DATE 8/02/10 to 8/05/10  
 CREW BUCHHOLZ/PARRISH/PICKENS

Summary Data

All dimensions in feet.

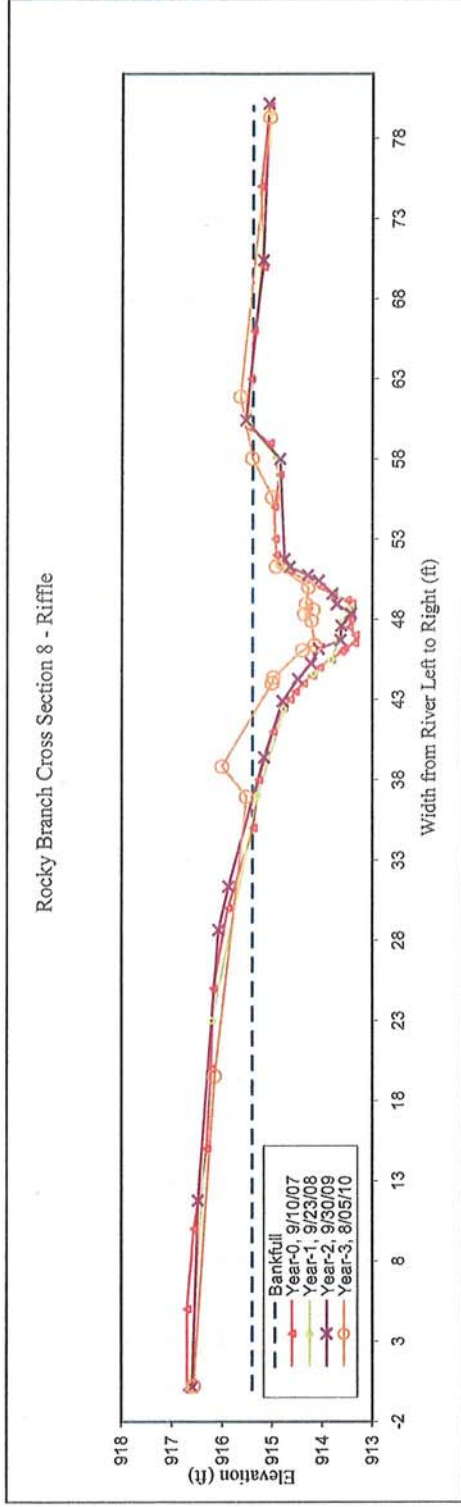
Bankfull X-sec area	31.0	sq. ft.
Bankfull Width	23.7	ft.
Bankfull Mean Depth	1.3	ft.
Bankfull Max Depth	3.0	ft.
Width/Depth Ratio	>12	
Entrenchment Ratio	>2.2	
Classification	C	
Bank Height Ratio	1.0	
Bankfull Elevation:	914.49	ft.



CROSS SECTION PHOTO - LOOKING DOWNSTREAM

ROCKY BRANCH		EEP PROJECT # 308		CROSS-SECTION: 8									
Year-0		Year-1		Year-2		Year-3		Year-4		Year-5		Year-6	
Station (ft)	Elev. (ft)	Station (ft)	Elev. (ft)	Station (ft)	Elev. (ft)	Station (ft)	Elev. (ft)	Station (ft)	Elev. (ft)	Station (ft)	Elev. (ft)	Station (ft)	Elev. (ft)
0.00	916.69	0.00	916.63	0.17	916.58	0.25	916.56						
5.00	916.69	23.00	916.21	11.78	916.47	19.55	916.15						
10.00	916.56	37.00	915.30	28.65	916.08	36.95	915.51						
15.00	916.30	42.40	914.77	31.35	915.88	38.84	916.01						
20.00	916.22	44.60	914.16	39.41	915.16	44.04	915.00						
25.00	916.18	45.50	913.81	42.90	914.80	44.39	914.98						
30.00	915.89	46.70	913.68	44.28	914.48	46.07	914.39						
35.00	915.38	47.80	913.62	45.27	914.22	46.40	914.15						
38.00	915.27	48.70	913.40	46.15	914.07	47.93	914.21						
41.00	914.99	49.70	913.78	46.71	913.63	48.33	914.35						
42.50	914.77	51.20	914.72	47.61	913.61	48.62	914.17						
43.00	914.64	57.90	914.89	48.37	913.43	48.94	914.32						
43.50	914.53	60.20	915.47	48.94	913.71	50.01	914.27						
44.00	914.37	79.60	915.03	49.61	913.79	51.31	914.92						
44.50	914.19			50.42	914.07	53.61	915.00						
45.00	914.05			50.74	914.28	58.06	915.40						
45.50	913.82			51.27	914.65	61.91	915.64						
46.00	913.61			51.76	914.76	79.31	915.05						
46.20	913.55			58.01	914.85								
46.50	913.35			60.44	915.53								
47.00	913.34			70.41	915.19								
47.50	913.46			80.18	915.08								
48.00	913.42												
48.50	913.42												
49.00	913.41												
49.20	913.50												
49.50	913.78												
50.00	914.02												
50.50	914.33												
51.00	914.65												
51.50	914.84												
52.00	914.92												
53.00	914.95												
55.00	914.96												
57.00	914.85												
59.00	915.05												
60.00	915.48												
63.00	915.43												
66.00	915.37												
70.00	915.18												
75.00	915.24												
80.00	915.06												





CROSS SECTION PLOT - LOOKING DOWNSTREAM

YEAR-3, 2010 SURVEY DATA      CROSS-SECTION:      8

PROJECT ROCKY BRANCH      FEATURE:      Riffle

TASK CROSS SECTION

REACH ROCKY BRANCH

DATE 8/02/10 to 8/05/10

CREW BUCHHOLZ/PARRISH/PICKENS

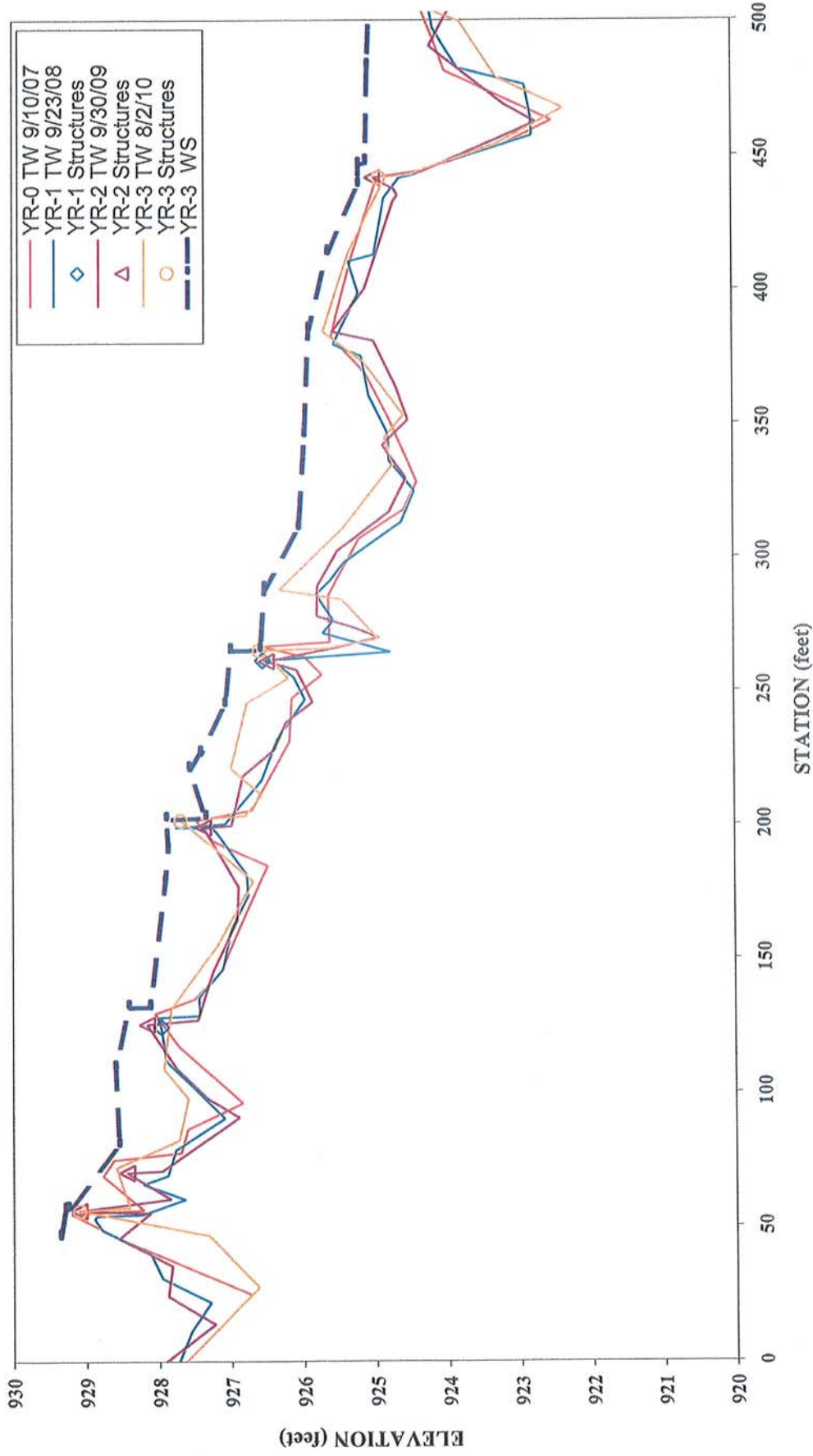
**Summary Data**  
 All dimensions in feet.

Bankfull X-sec area	11.60	sq. ft.
Bankfull Width	26.40	ft.
Bankfull Mean Depth	0.40	ft.
Bankfull Max Depth	1.30	ft.
Width/Depth Ratio	>12	
Entrenchment Ratio	>2.2	
Classification	C	
Bank Height Ratio	1.0	
Bankfull Elevation:	915.40	ft.



CROSS SECTION PHOTO - LOOKING DOWNSTREAM

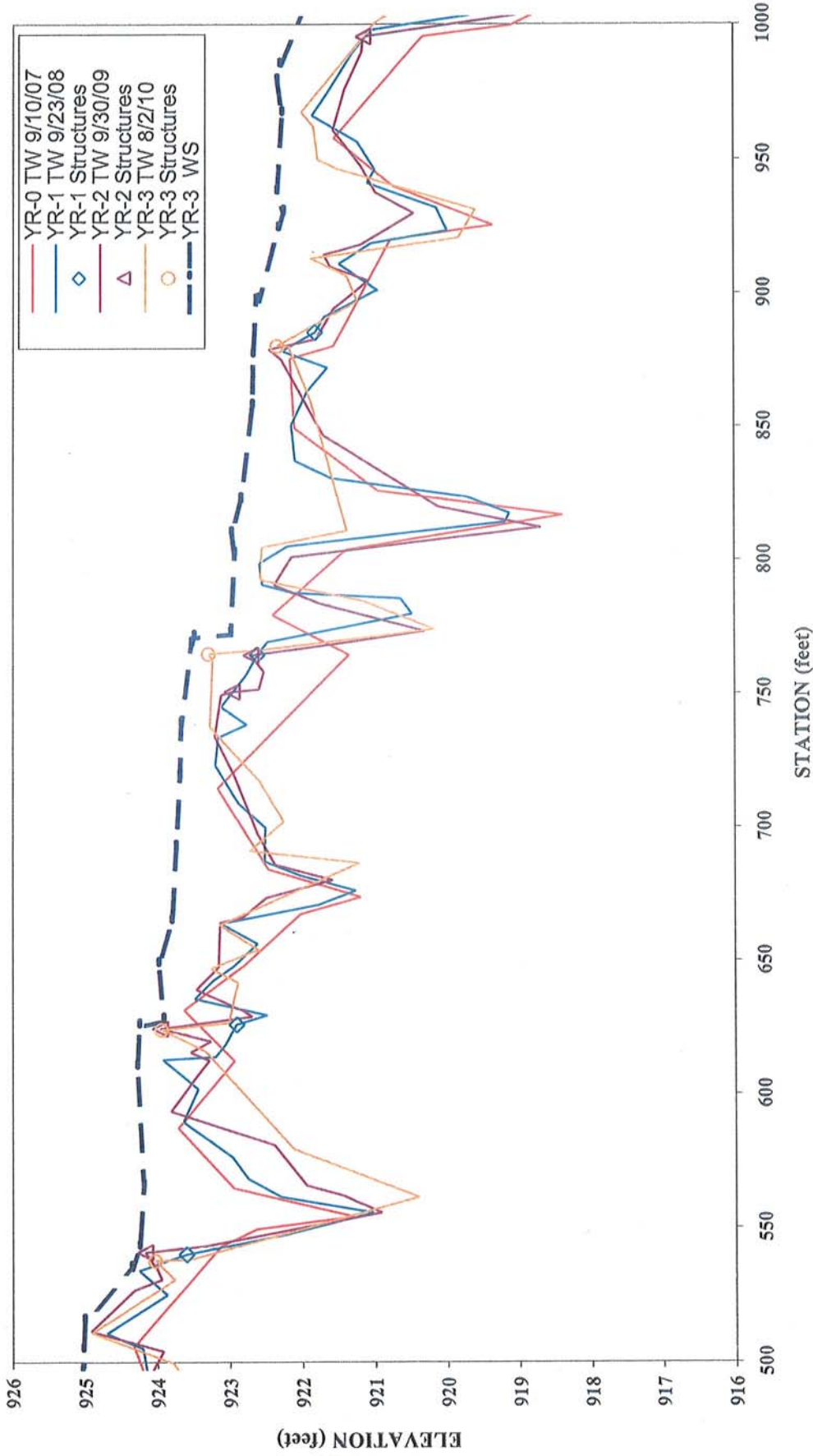
**Rocky Branch  
Longitudinal Profile  
2010 (Year-3) Monitoring**



Note: Due to slight differences in thalweg length, longitudinal profile was adjusted horizontally. Structures were used as a guide.

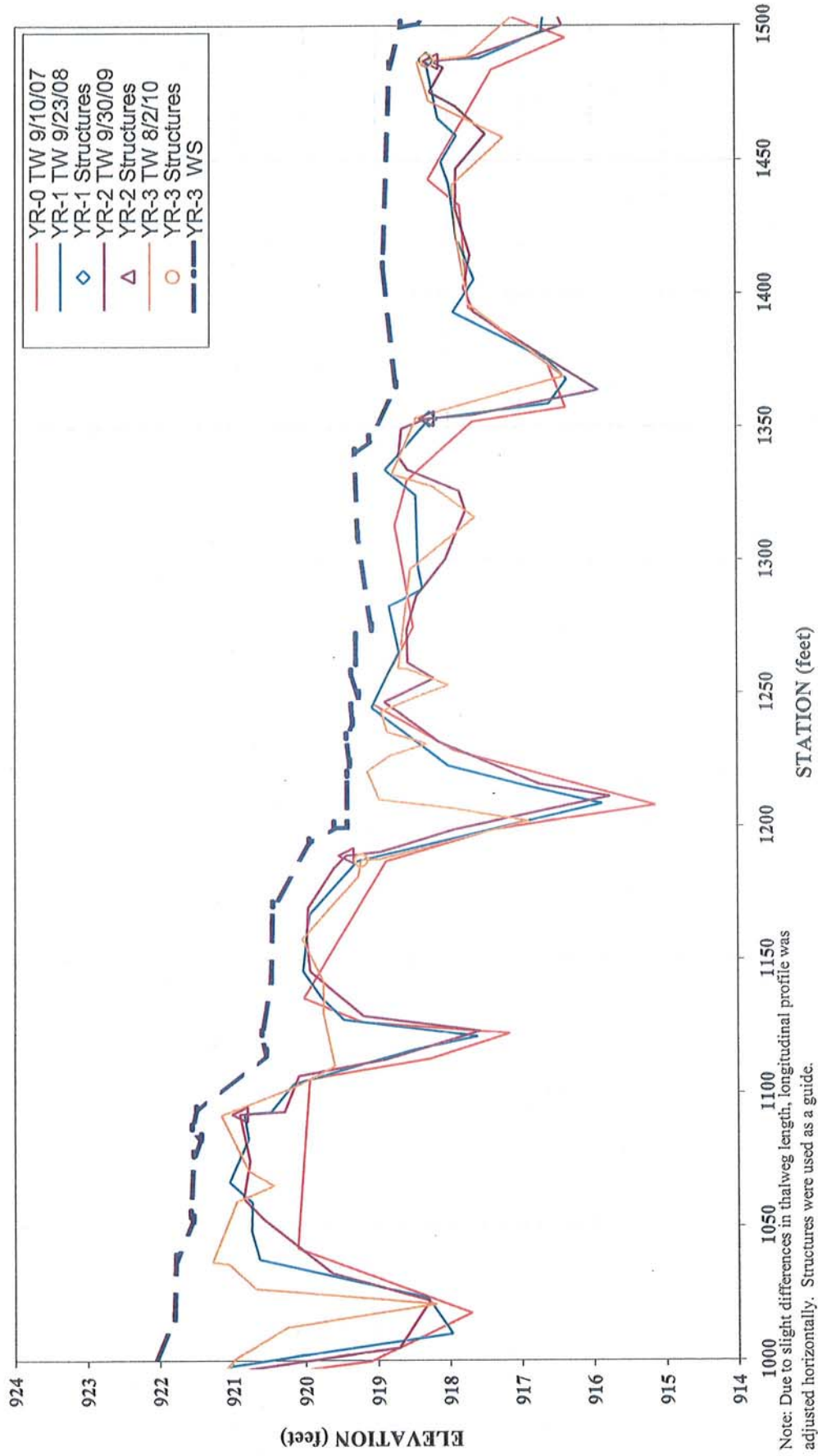


**Rocky Branch  
Longitudinal Profile  
2010 (Year-3) Monitoring**



Note: Due to slight differences in thalweg length, longitudinal profile was adjusted horizontally. Structures were used as a guide.

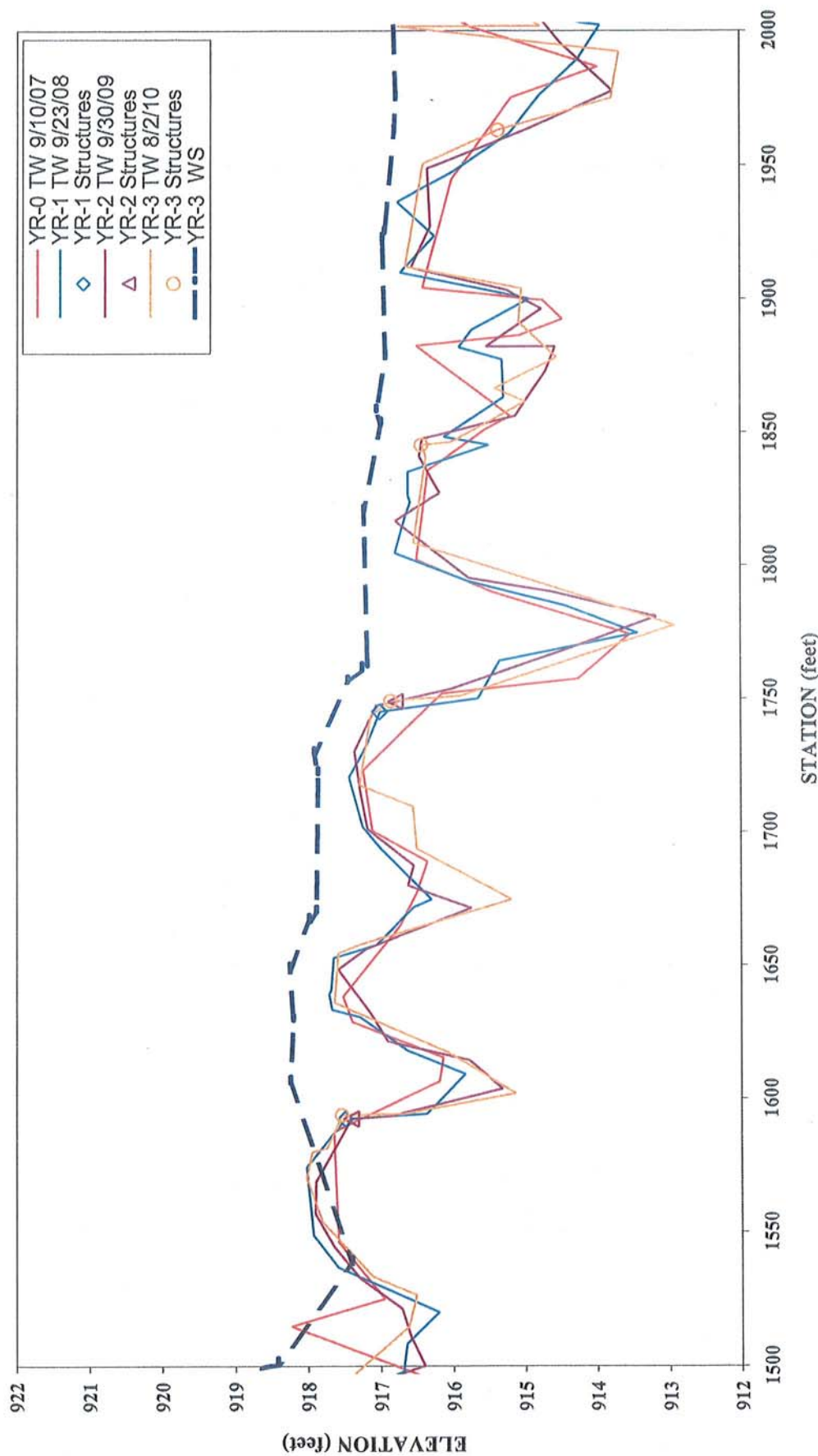
**Rocky Branch  
Longitudinal Profile  
2010 (Year-3) Monitoring**



Note: Due to slight differences in thalweg length, longitudinal profile was adjusted horizontally. Structures were used as a guide.

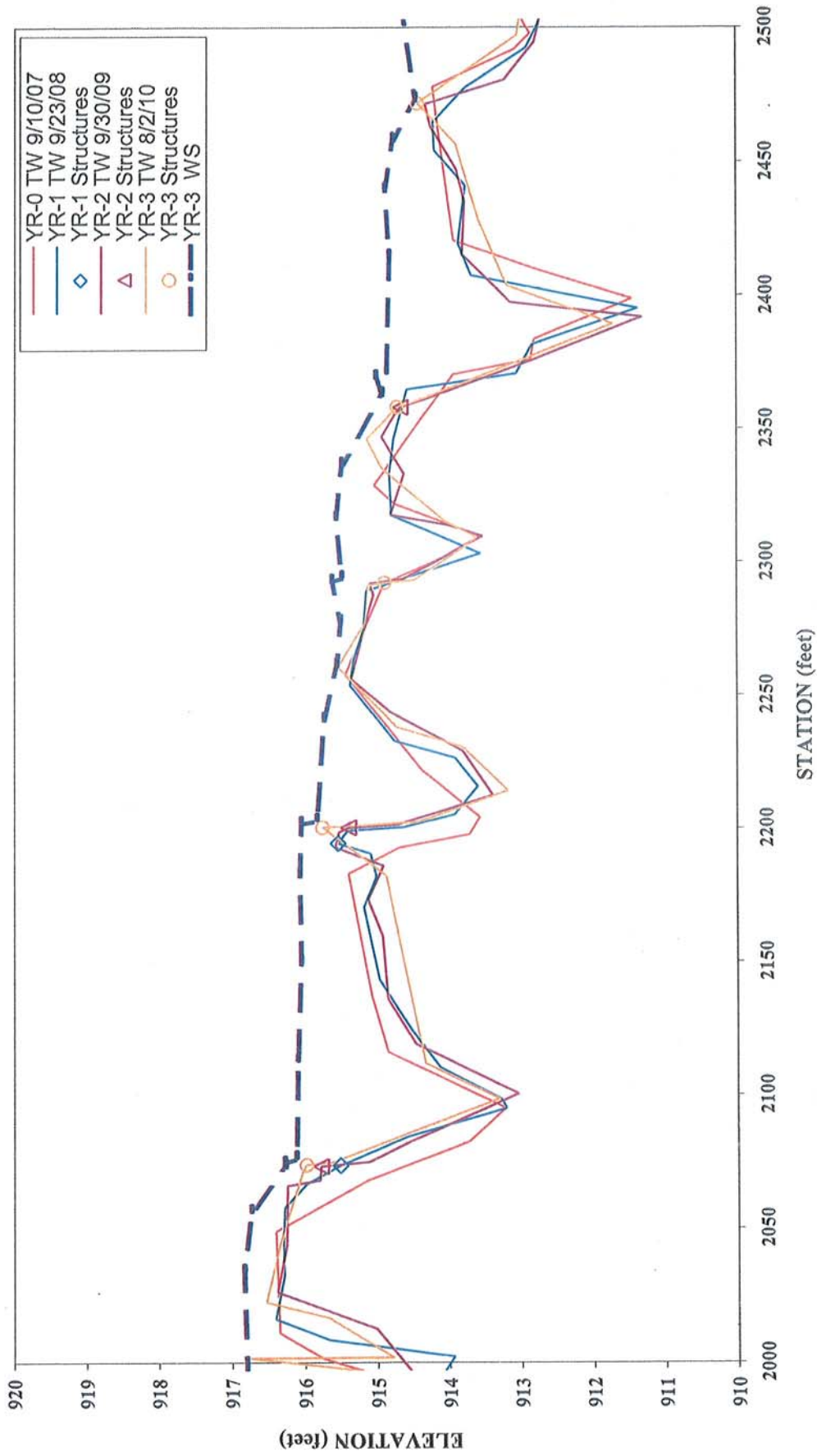


**Rocky Branch  
Longitudinal Profile  
2010 (Year-3) Monitoring**



Note: Due to slight differences in thalweg length, longitudinal profile was adjusted horizontally. Structures were used as a guide.

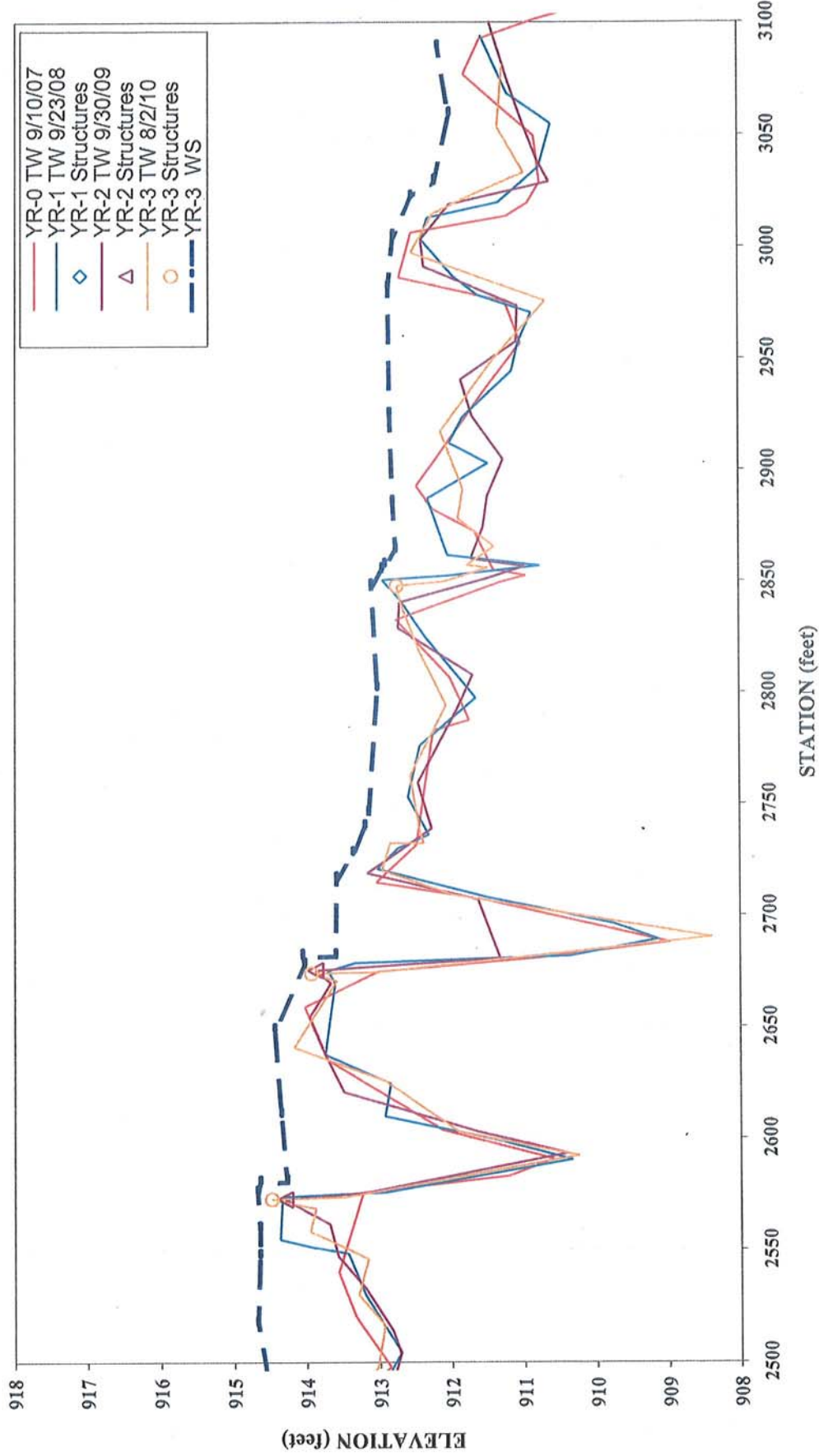
**Rocky Branch  
Longitudinal Profile  
2010 (Year-3) Monitoring**



Note: Due to slight differences in thalweg length, longitudinal profile was adjusted horizontally. Structures were used as a guide.



**Rocky Branch  
Longitudinal Profile  
2010 (Year-3) Monitoring**



Note: Due to slight differences in thalweg length, longitudinal profile was adjusted horizontally. Structures were used as a guide.

**3-YEAR, 2010 SURVEY DATA**

**PROJECT NAME** ROCKY BRANCH

**FEATURE/FACET SLOPE  
LENGTH, AND SPACING AND  
LONGITUDINAL PROFILE DATA**

**TASK** LONGITUDINAL PROFILE  
**REACH** ROCKY BRANCH  
**DATE** 8/2/2010 to 8/5/2010  
**CREW** BUCHHOLZ/PARRISH/PICKENS

Overall water surface slope =	0.6%	<b>DESIGN</b>	<b>MIN.</b>	<b>MAX.</b>
		Riffle	1.1%	3.3%
WS sta. start =	52.38 ft	Run	---	---
WS sta. end =	3107.48 ft	p-p spacing	115	161
ELEV. Start =	929.35 ft msl			
ELEV. End =	912.16 ft msl	Results		

	n =	MIN.	MEDIAN.	AVG.	MAX.
Riffle slopes measured =	29	0.13%	1.21%	2.10%	18.59%
Run slopes measured =	18	0.28%	6.64%	6.40%	18.78%
Pools measured =	36	15	85	84	175

All data reported in units of feet unless otherwise specified.

Feature	Station	Length	Slope		
RIFFLE	232.94	18.58	0.91%	n =	29
RIFFLE	293.81	22.81	3.86%	MIN =	0.13%
RIFFLE	390.36	29.71	1.21%	MEDIAN =	1.21%
RIFFLE	443.9	7.91	0.25%	AVG. =	2.10%
RIFFLE	520.92	26.88	3.27%	MAX =	18.59%
RIFFLE	653.73	9.63	18.59%		
RIFFLE	737.57	29.79	0.13%		
RIFFLE	808.53	12.19	0.16%		
RIFFLE	928.92	7.65	0.52%		
RIFFLE	978.12	38.61	2.23%		
RIFFLE	1052.74	22.75	1.45%		
RIFFLE	1097.72	20.69	4.88%		
RIFFLE	1173.86	23.45	0.94%		
RIFFLE	1226.15	16.38	0.92%		
RIFFLE	1251.41	7.73	1.16%		
RIFFLE	1275.1	37.43	1.63%		
RIFFLE	1348.14	21.33	1.59%		
RIFFLE	1488.04	14.37	1.74%		
RIFFLE	1652.1	21.63	1.57%		
RIFFLE	1733.71	26.22	0.61%		
RIFFLE	1824.4	32.43	0.52%		
RIFFLE	1928.19	38.52	0.65%		
RIFFLE	2038.54	52.92	0.94%		



3-YEAR, 2010 SURVEY DATA

PROJECT NAME ROCKY BRANCH

RIFFLE	2280.54	16.78	2.21%		
RIFFLE	2355.3	33	0.67%		
RIFFLE	2578.34	16.24	0.49%		
RIFFLE	2666.83	29.89	1.97%		
RIFFLE	2746.37	18.38	2.83%		
RIFFLE	3023.43	24.25	3.05%		
<hr/>					
<b>Feature</b>	<b>Station</b>	<b>Length</b>	<b>Slope</b>		
RUN	88.28	15.6	0.83%	n =	18
RUN	160.73	24.37	2.09%	MIN =	0.28%
RUN	251.52	9.33	6.11%	MEDIAN =	6.64%
RUN	316.62	23.74	2.91%	AVG. =	6.40%
RUN	663.36	23.2	9.40%	MAX =	18.78%
<hr/>					
RUN	820.72	6.23	18.78%		
RUN	936.57	10.58	2.27%		
RUN	1016.73	11.54	6.24%		
RUN	1075.49	5.81	8.78%		
RUN	1118.41	7.75	7.23%		
RUN	1242.53	4.46	11.43%		
RUN	1369.47	25.42	8.06%		
RUN	1673.73	17.06	12.37%		
RUN	1856.83	4.42	1.36%		
RUN	1966.71	12.55	8.21%		
RUN	2297.32	14.96	1.80%		
RUN	2764.75	109.05	0.28%		
RUN	3047.68	11.63	7.05%		
<hr/>					
<b>Feature</b>	<b>Station</b>	<b>Length</b>	<b>p-p spacing</b>		
POOL	103.88	27		n =	36
POOL	185.1	37	81	MIN =	15 (p-p spacing)
POOL	217.29	18	32	MEDIAN =	85
POOL	260.85	15	44	AVG. =	84
POOL	275.38	18	15	MAX =	175
<hr/>					
POOL	340.36	34	65		
POOL	477.45	36	137		
POOL	571.4	41	94		
POOL	641.89	20	70		
POOL	686.56	28	45		
POOL	789.99	29	103		
POOL	826.95	35	37		
POOL	912.96	26	86		
POOL	947.15	29	34		
POOL	1028.27	20	81		
POOL	1081.3	11	53		
POOL	1126.16	28	45		
POOL	1217.98	19	92		
POOL	1246.99	5	29		
POOL	1331.95	31	85		
POOL	1394.89	43	63		
POOL	1542.45	45	148		
POOL	1617.99	23	76		
POOL	1690.79	36	73		
POOL	1793.54	57	103		
POOL	1877.61	20	84		
POOL	2008.27	51	131		

**3-YEAR, 2010 SURVEY DATA**

PROJECT NAME ROCKY BRANCH

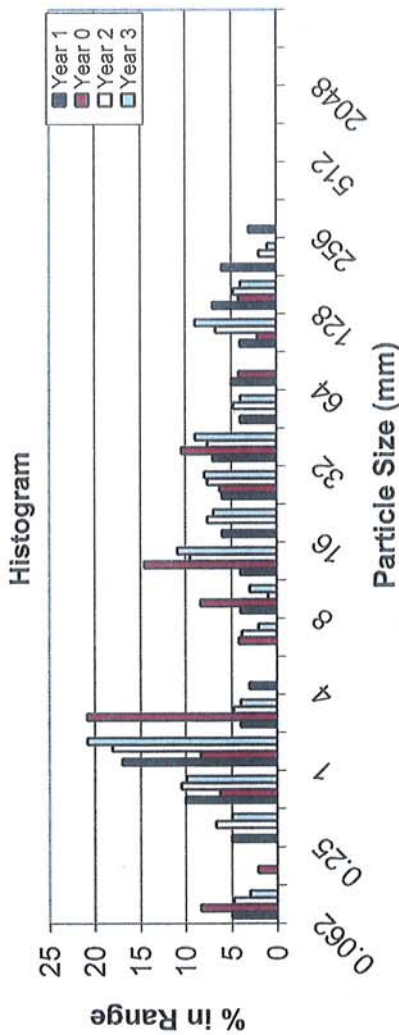
POOL	2118.64	37	110
POOL	2234.21	36	116
POOL	2328.99	22	95
POOL	2419.44	44	90
POOL	2517.17	58	98
POOL	2618.32	29	101
POOL	2716.24	35	98
POOL	2891.58	28	175
POOL	3059.31	32	168



EEP PROJECT ID: 308  
 CROSS-SECTION: 2  
 FEATURE: RIFFLE

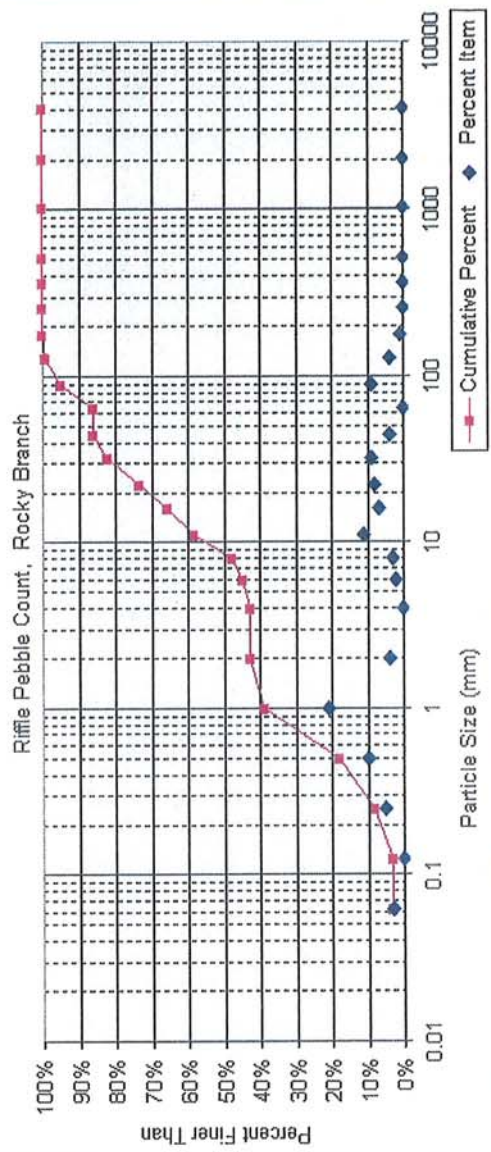


PROJECT ROCKY BRANCH  
 TASK PEBBLE COUNT  
 REACH ROCKY BRANCH  
 DATE 8/02/2010 to 8/05/2010  
 CREW BUCHHOLZ/PARRISH/PICKENS



Rocky Branch  
 8/2/2010

Note:



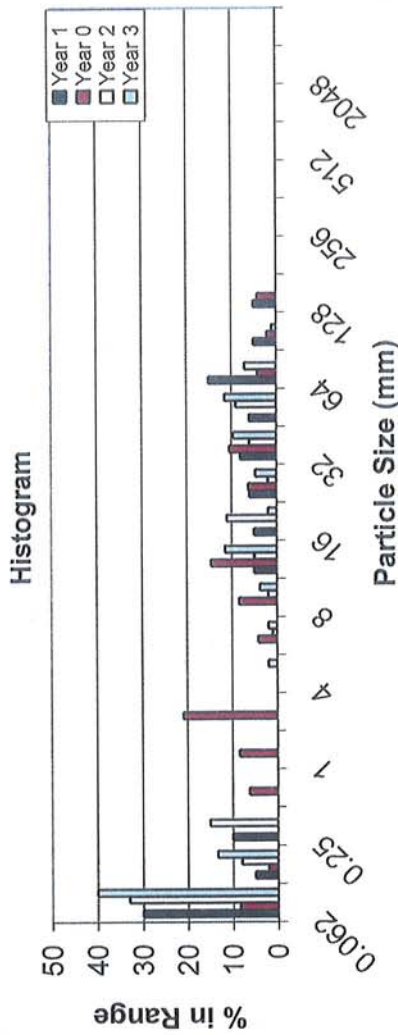
Size percent less than (mm)		Percent by substrate type			
D16	D35	D50	D84	D95	bedrock
0.440	0.89	8.6	37	90	0%
					bedrock
					boulder
					0%
					cobble
					14%
					gravel
					44%
					sand
					40%
					silt/clay
					3%

Material	Size Range (mm)	Count
silt/clay	0	3
very fine sand	0.062	5
fine sand	0.13	10
medium sand	0.25	21
coarse sand	0.5	4
very coarse sand	1	2
very fine gravel	2	4
fine gravel	4	2
fine gravel	6	3
medium gravel	8	11
medium gravel	11	7
coarse gravel	16	8
coarse gravel	22	9
very coarse gravel	32	4
very coarse gravel	45	9
small cobble	64	4
medium cobble	90	1
large cobble	128	
very large cobble	180	
small boulder	256	
small boulder	362	
medium boulder	512	
large boulder	1024	
very large boulder	2048	
bedrock	4096	
Total Particle Count:		101

EEP PROJECT ID: 308  
 CROSS-SECTION: 4  
 FEATURE: RIFFLE



PROJECT ROCKY BRANCH  
 TASK PEBBLE COUNT  
 REACH ROCKY BRANCH  
 DATE 8/02/2010 to 8/05/2010  
 CREW BUCHHOLZ/PARRISH/PICKENS



Material	Size Range (mm)	Count
silt/clay	0 - 0.062	42
very fine sand	0.062 - 0.13	14
fine sand	0.13 - 0.25	14
medium sand	0.25 - 0.5	1
coarse sand	0.5 - 1	2
very coarse sand	1 - 2	4
very fine gravel	2 - 4	2
fine gravel	4 - 6	2
fine gravel	6 - 8	4
medium gravel	8 - 11	12
medium gravel	11 - 16	2
coarse gravel	16 - 22	5
coarse gravel	22 - 32	10
very coarse gravel	32 - 45	12
very coarse gravel	45 - 64	12
small cobble	64 - 90	0
medium cobble	90 - 128	0
large cobble	128 - 180	0
very large cobble	180 - 256	0
small boulder	256 - 362	0
small boulder	362 - 512	0
medium boulder	512 - 1024	0
large boulder	1024 - 2048	0
very large boulder	2048 - 4096	0
bedrock		0
<b>Total Particle Count:</b>		<b>105</b>

Size percent less than (mm)	D16	D35	#N/A	D50	#N/A	D64	D95	Percent by substrate type
	#N/A	#N/A	0.1	27	39	40%	47%	silt/clay 40% sand 13% gravel 47% cobble 0% boulder 0% bedrock 0%

Material	Rocky Branch
	8/3/2010
	---
	Note:

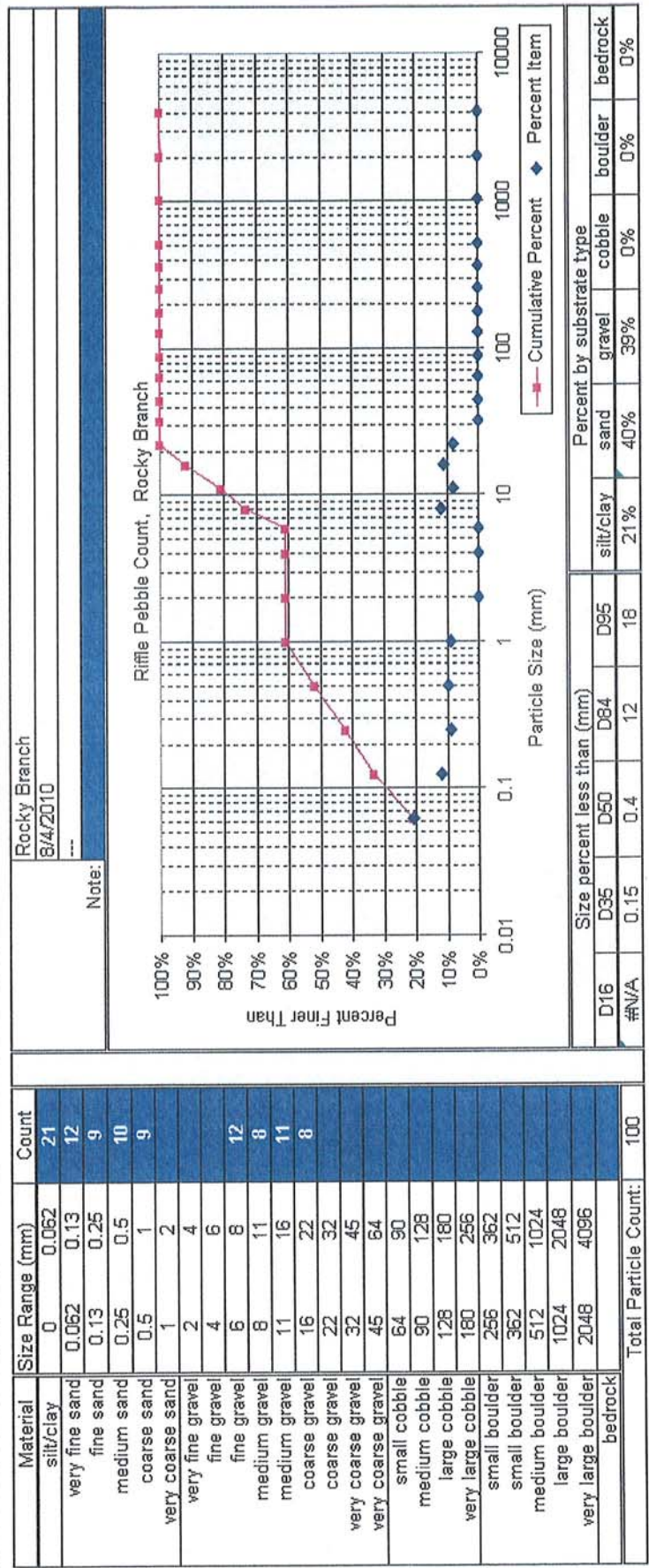
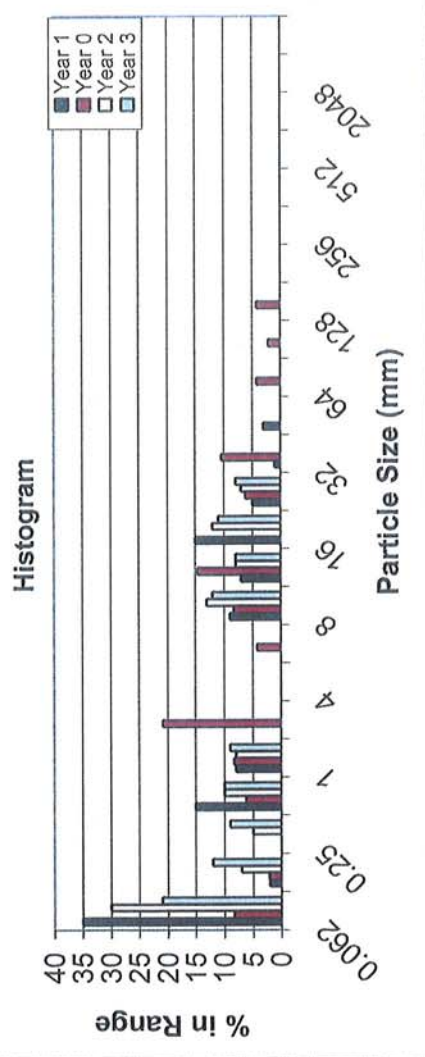
### Riffle Pebble Count, Rocky Branch



EEP PROJECT ID: 308  
 CROSS-SECTION: 7  
 FEATURE: RIFFLE



PROJECT ROCKY BRANCH  
 TASK PEBBLE COUNT  
 REACH ROCKY BRANCH  
 DATE 8/02/2010 to 8/05/2010  
 CREW BUCHHOLZ/PARRISH/PICKENS







APPENDIX E

Wetland Assessment  
(omitted – not applicable)