

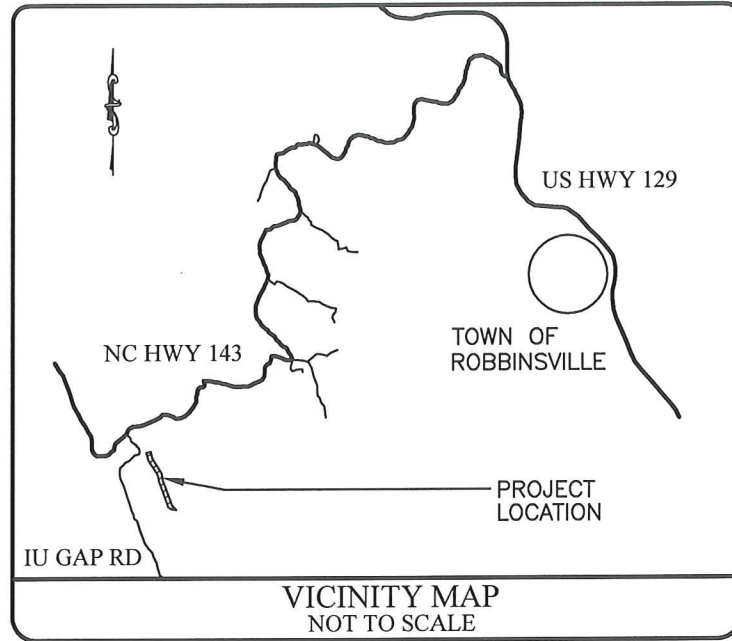
NC Ecosystem Enhancement Program

Snowbird Creek Tributaries Project

Preservation, Enhancement, & Restoration Graham County, North Carolina EEP Project Number 000613



Michael Baker Engineering Inc.
NC Engineering License F-1084
797 Haywood Road, Suite 201
Asheville, North Carolina 28806
Phone: 828.350.1408
Fax: 828.350.1409



INDEX OF SHEETS

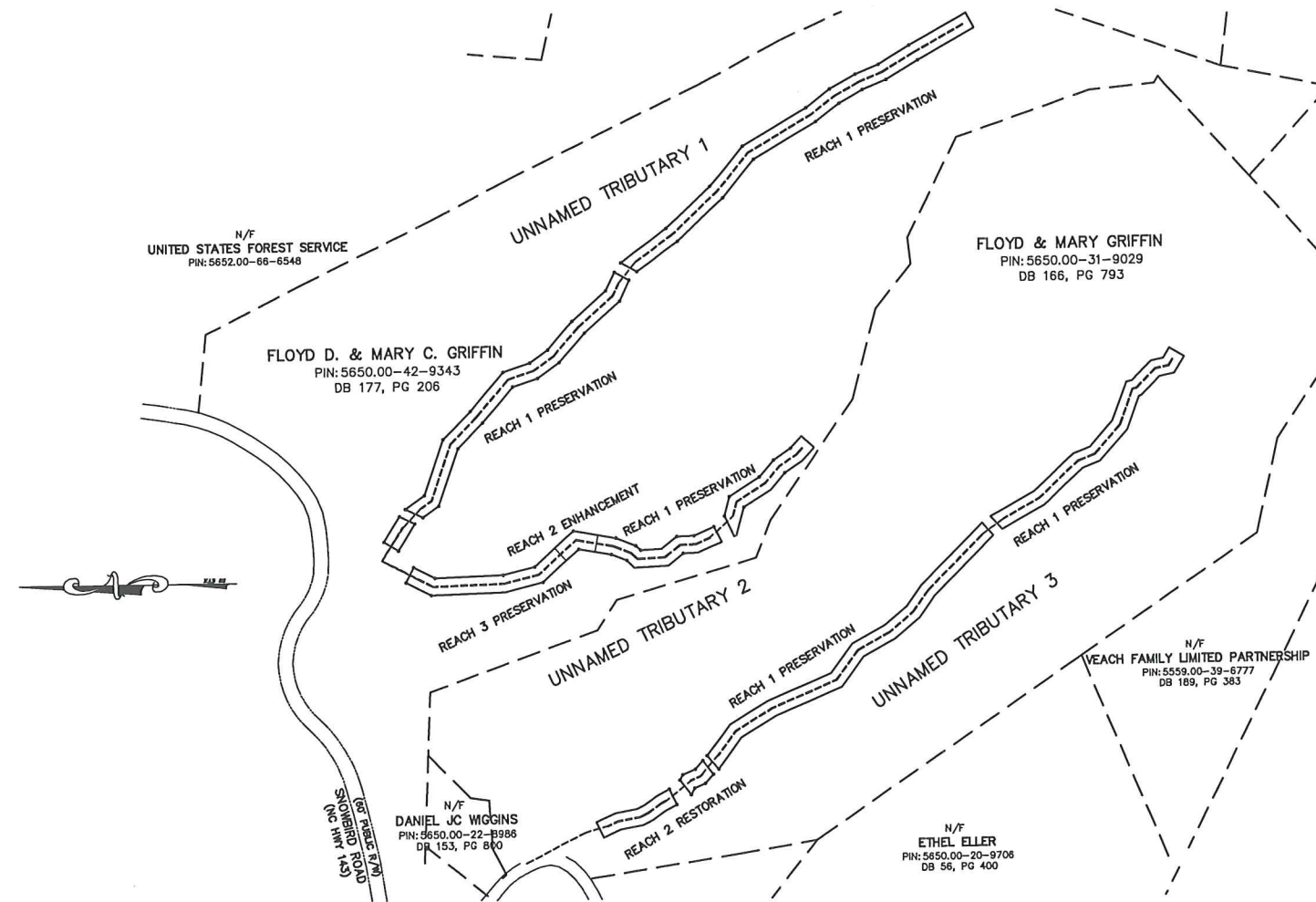
1 Title
2 Legend
3 Plan
4 Profile
5 Cross-Sections
6 Preservation Reach Photo Points

CONTROL POINTS

POINT	NORTHING	EASTING	ELEVATION
GPS1	602066.20	553058.92	2042.46
GPS2	602457.12	552864.05	2004.78
BCP1	602074.30	553036.25	2040.67
BCP2	601935.53	553095.29	2054.87
BCP3	602153.87	552925.97	2036.59

Datum Description:
North Carolina grid coordinates (NAD83) for primary GPS derived control points were established by Vaughn & Melton Consulting Engineers, Asheville, NC.

Supplemental control points (NAD83) utilized for this survey were established by Michael Baker Engineering using conventional methods.



SITE PLAN
1" = 600'

Baker

SNOWBIRD CREEK TRIBUTARIES PROJECT
NORTH CAROLINA
ASBUILT SURVEY

Prepared for:
Ecosystem Enhancement Program
2728 Capital Blvd, Suite 1H 103
Raleigh, NC 27604
Phone: 919-715-0476
Fax: 919-715-2219

Project No.	113112
Date:	11/22/2011
File Name	asbuilt cover.dwg
DESIGNED:	JEM
DRAWN:	MDR
APPROVED:	MMC
Drawing No.	1 of 6

LEGEND OF SYMBOLS



Michael Baker Engineering Inc.
 NC Engineering License F-1084
 797 Haywood Road, Suite 201
 Asheville, North Carolina 28806
 Phone: 828.350.1408
 Fax: 828.350.1409

Baker

SNOWBIRD CREEK TRIBUTARIES PROJECT
 NORTH CAROLINA
LEGEND

Prepared for:
 Ecosystem Enhancement Program
 2728 Capitol Blvd., Suite 1H 103
 Raleigh, NC 27604
 Phone: 919-715-0476
 Fax: 919-715-2219

Project No.
 113112
 Date:
 11/22/2011
 File Name
 asbuilt cover.dwg
 DESIGNED: JPM
 DRAWN: MDR
 APPROVED: MMC
 Drawing No.
 2 of 6

	CONSERVATION EASEMENT
	CONSTRUCTED THALWEG
	TOP OF BANK
	CHANNEL
	CONTOUR - INDEX (5')
	CONTOUR - INTERMEDIATE (1')
	BOULDER STEP
	PHOTO POINT
	PERMANENT STREAM CROSSING
	UNDISTURBED LARGE TREE
	VEGETATION PLOT
	CREST GAGE

SNOWBIRD UT 3 - REACH 2 STREAM RESTORATION (PRIORITY 1)



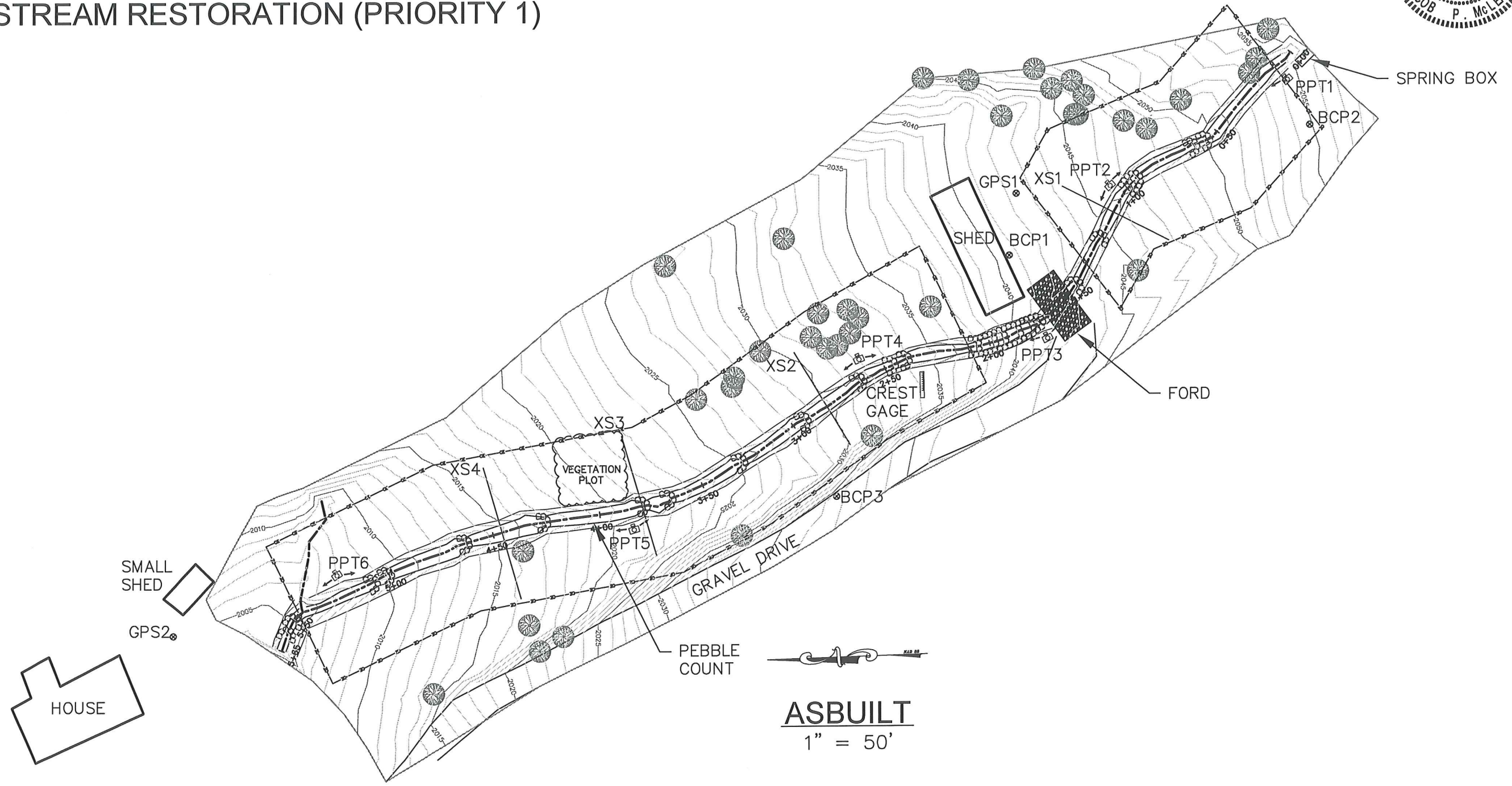
Michael Baker Engineering Inc.
 NC Engineering License F-1084
 797 Haywood Road, Suite 201
 Asheville, North Carolina 28806
 Phone: 828.350.1408
 Fax: 828.350.1409

Baker

SNOWBIRD CREEK TRIBUTARIES PROJECT
 NORTH CAROLINA
 PLAN

Prepared for:
 Ecosystem Enhancement Program
 2728 Capitol Blvd, Suite 1H 103
 Raleigh, NC 27604
 Phone: 919-715-0476
 Fax: 919-715-2219

Project No. 113112
 Date: 11/22/2011
 File Name: Snowbird Asbuilt 2012.d
 DESIGNED: JPM
 DRAWN: MDR
 APPROVED: MMC
 Drawing No. 3 of 6

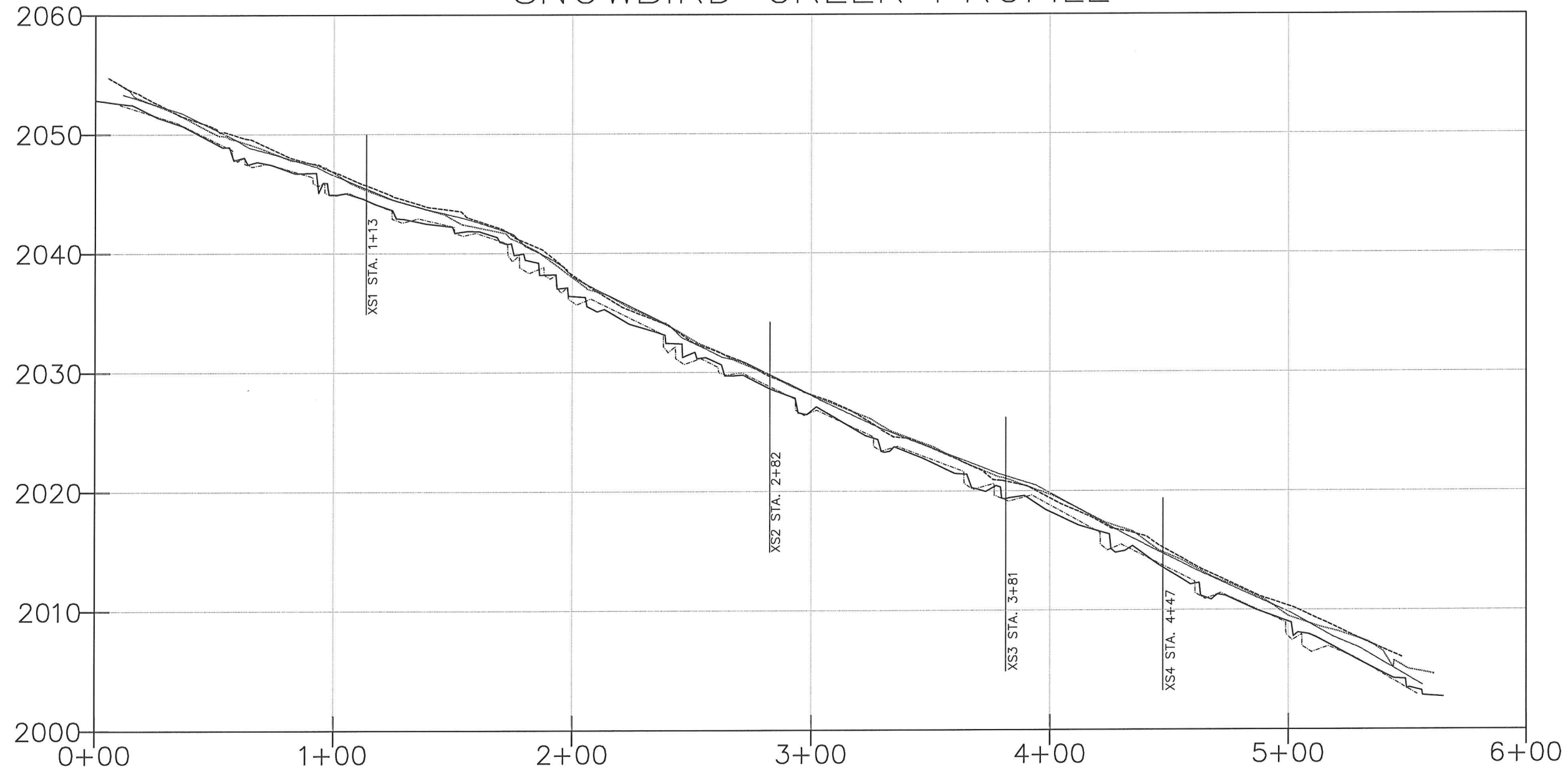


ASBUILT
 1" = 50'



Michael Baker Engineering Inc.
 NC Engineering License F-1084
 797 Haywood Road, Suite 201
 Asheville, North Carolina 28806
 Phone: 828.350.1408
 Fax: 828.350.1409

SNOWBIRD CREEK PROFILE



PROFILE SCALE
 HORIZONTAL: 1"=50'
 VERTICAL: 1"=10'

- ASBUILT THALWEG
- - - - - ASBUILT LTB
- ASBUILT RTB
- - - - - DESIGN THALWEG
- - - - - DESIGN BANKFULL

Baker

SNOWBIRD CREEK TRIBUTARIES PROJECT
 NORTH CAROLINA
 PROFILE

Prepared for:
 Ecosystem Enhancement Program
 2728 Capitol Blvd, Suite 1H 103
 Raleigh, NC 27604
 Phone: 919-715-0476
 Fax: 919-715-2219

Project No.	113112
Date:	11/22/2011
File Name	Snowbird Asbuilt 2012.d
DESIGNED:	JEM
DRAWN:	MDR
APPROVED:	MMC
Drawing No.	4 of 6



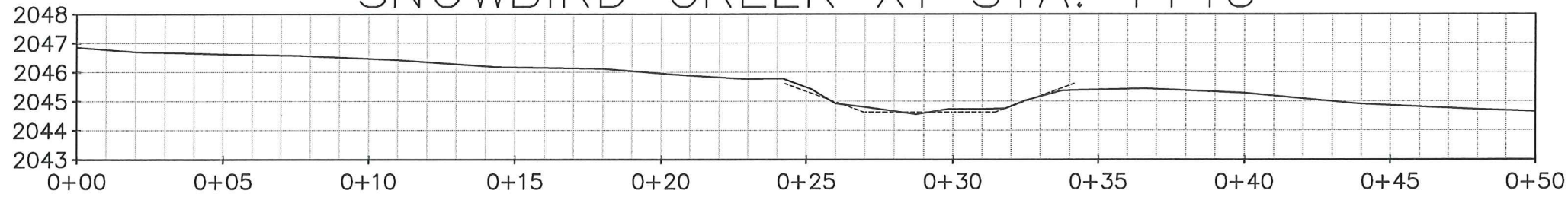
Michael Baker Engineering Inc.
 NC Engineering License F-1084
 797 Haywood Road, Suite 201
 Asheville, North Carolina 28806
 Phone: 828.350.1408
 Fax: 828.350.1409

Baker

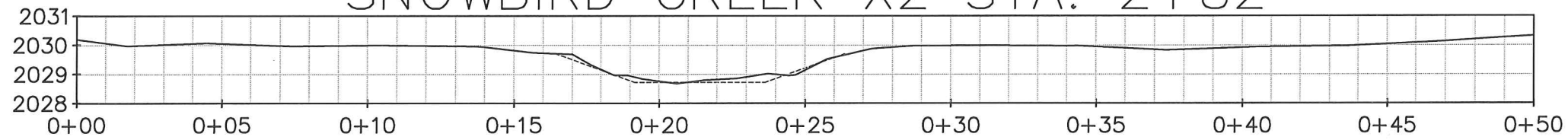
SNOWBIRD CREEK TRIBUTARIES PROJECT
 NORTH CAROLINA
CROSS SECTIONS

Prepared for:
 Ecosystem Enhancement Program
 2728 Capitol Blvd., Suite 1H 103
 Raleigh, NC 27604
 Phone: 919-715-0476
 Fax: 919-715-2219

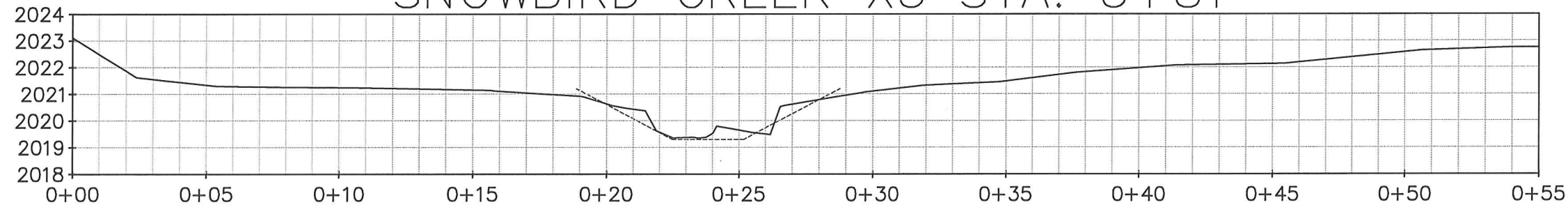
SNOWBIRD CREEK X1 STA. 1+13



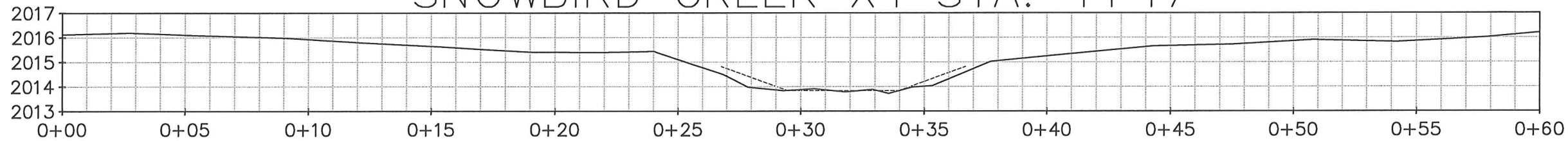
SNOWBIRD CREEK X2 STA. 2+82



SNOWBIRD CREEK X3 STA. 3+81



SNOWBIRD CREEK X4 STA. 4+47



CROSS-SECTION SCALE
 HORIZONTAL: 1"=5'
 VERTICAL: 1"=5'

————— ASBUILT CROSS-SECTION
 - - - - - DESIGN CROSS-SECTION

Project No.	113112
Date:	11/22/2011
File Name	Snowbird Asbuilt 2012.d
DESIGNED:	JPM
DRAWN:	MDR
APPROVED:	MMC
Drawing No.	5 of 6



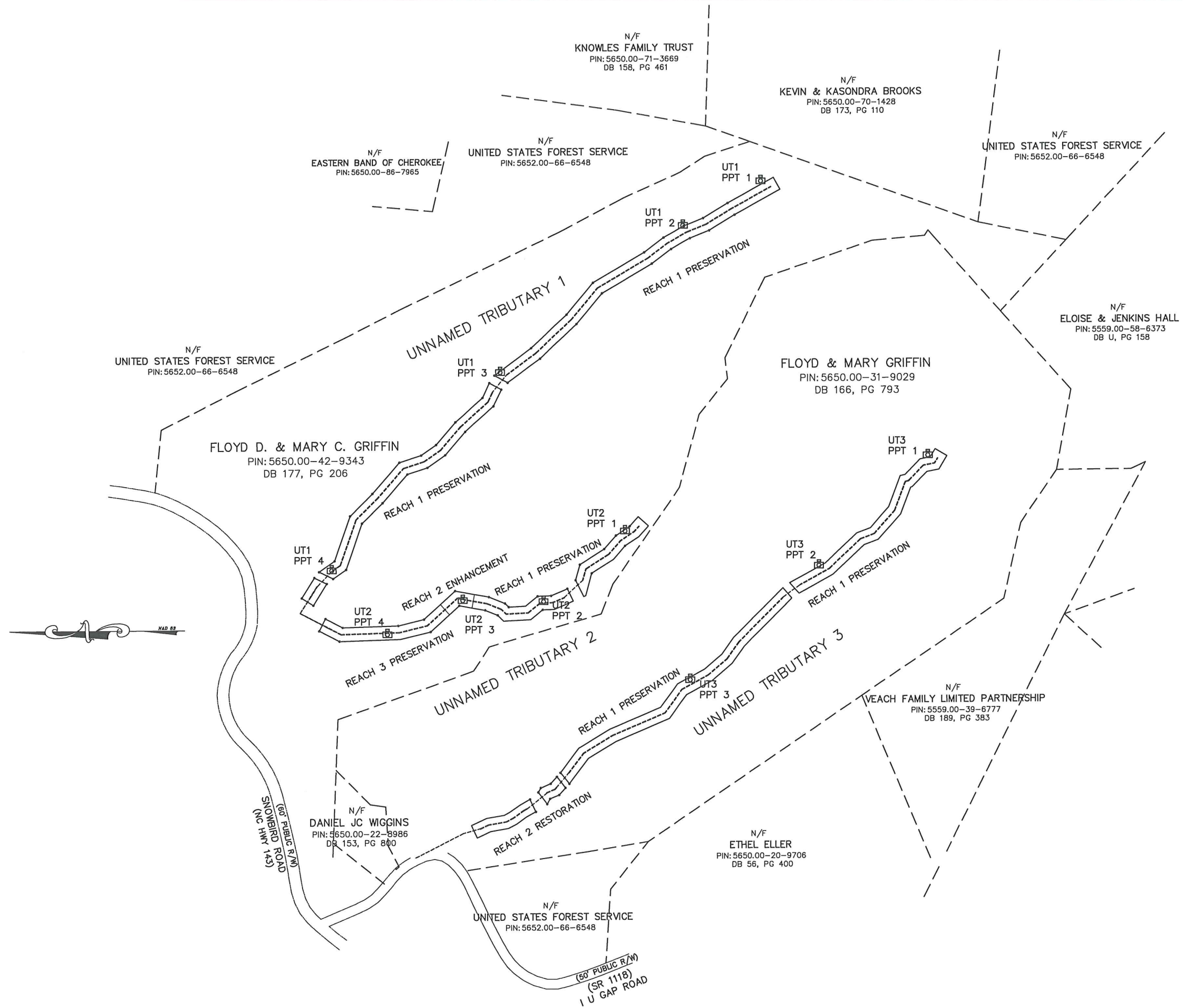
Michael Baker Engineering Inc.
 NC Engineering License F-1084
 797 Haywood Road, Suite 201
 Asheville, North Carolina 28806
 Phone: 828.350.1408
 Fax: 828.350.1409

Baker

SNOWBIRD CREEK TRIBUTARIES PROJECT
 NORTH CAROLINA
 PRESERVATION REACH
 PHOTO POINTS

Prepared for:
 Ecosystem Enhancement Program
 2728 Capitol Blvd., Suite 1H 103
 Raleigh, NC 27604
 Phone: 919-715-0476
 Fax: 919-715-2219

Project No.
113112
 Date:
11/22/2011
 File Name
asbuilt cover.dwg
 DESIGNED: JPM
 DRAWN: MDR
 APPROVED: MMC
 Drawing No.
6 of 6



N/F
 KNOWLES FAMILY TRUST
 PIN: 5650.00-71-3669
 DB 158, PG 461

N/F
 KEVIN & KASONDRA BROOKS
 PIN: 5650.00-70-1428
 DB 173, PG 110

N/F
 EASTERN BAND OF CHEROKEE
 PIN: 5650.00-86-7965

N/F
 UNITED STATES FOREST SERVICE
 PIN: 5652.00-66-6548

N/F
 UNITED STATES FOREST SERVICE
 PIN: 5652.00-66-6548

N/F
 UNITED STATES FOREST SERVICE
 PIN: 5652.00-66-6548

N/F
 ELOISE & JENKINS HALL
 PIN: 5559.00-58-6373
 DB U, PG 158

FLOYD & MARY GRIFFIN
 PIN: 5650.00-31-9029
 DB 166, PG 793

FLOYD D. & MARY C. GRIFFIN
 PIN: 5650.00-42-9343
 DB 177, PG 206

UT1
 PPT 4

UT2
 PPT 4

UT2
 PPT 3

UT2
 PPT 1

UT2
 PPT 2

UT3
 PPT 2

UT3
 PPT 1

UT3
 PPT 3

N/F
 DANIEL JC WIGGINS
 PIN: 5650.00-22-8986
 DB 153, PG 800

N/F
 ETHEL ELLER
 PIN: 5650.00-20-9706
 DB 56, PG 400

N/F
 UNITED STATES FOREST SERVICE
 PIN: 5652.00-66-6548

N/F
 VEACH FAMILY LIMITED PARTNERSHIP
 PIN: 5559.00-39-6777
 DB 189, PG 383

(50' PUBLIC R/W)
 (SR 1118)
 I U GAP ROAD

(50' PUBLIC R/W)
 SNOWBIRD ROAD
 (NC HMT 143)