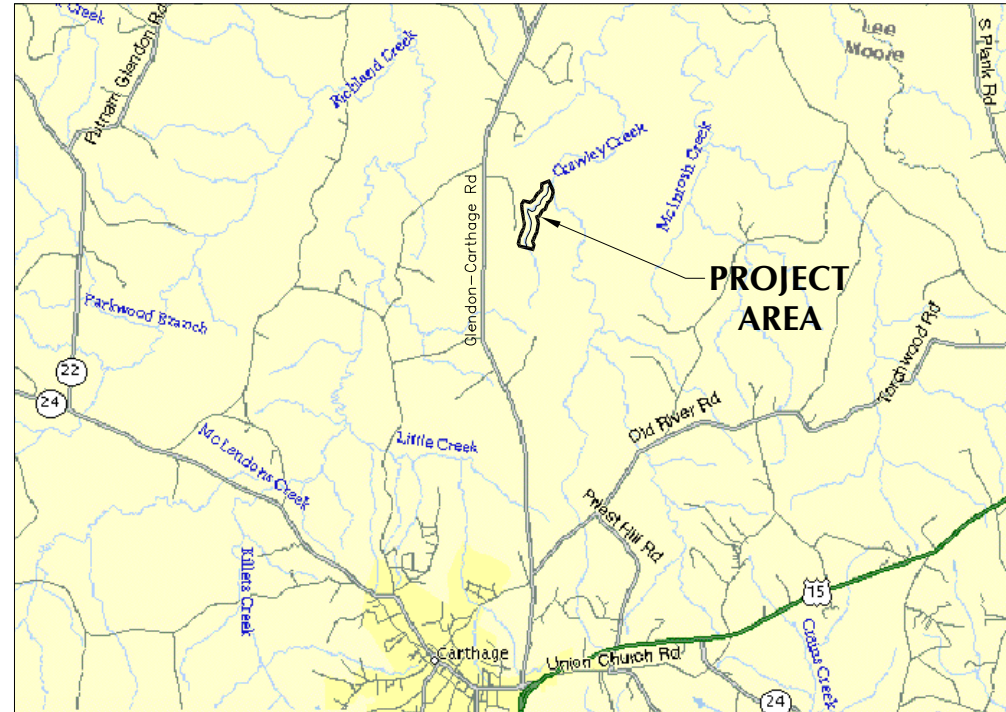


STONEBRIDGE STREAM AS-BUILT PLANS

APRIL 2006



VICINITY MAP
NTS

ENVIRONMENTAL BANC & EXCHANGE, LLC

MANAGERS, BANKERS AND TRADERS OF
ENVIRONMENTAL RIGHTS

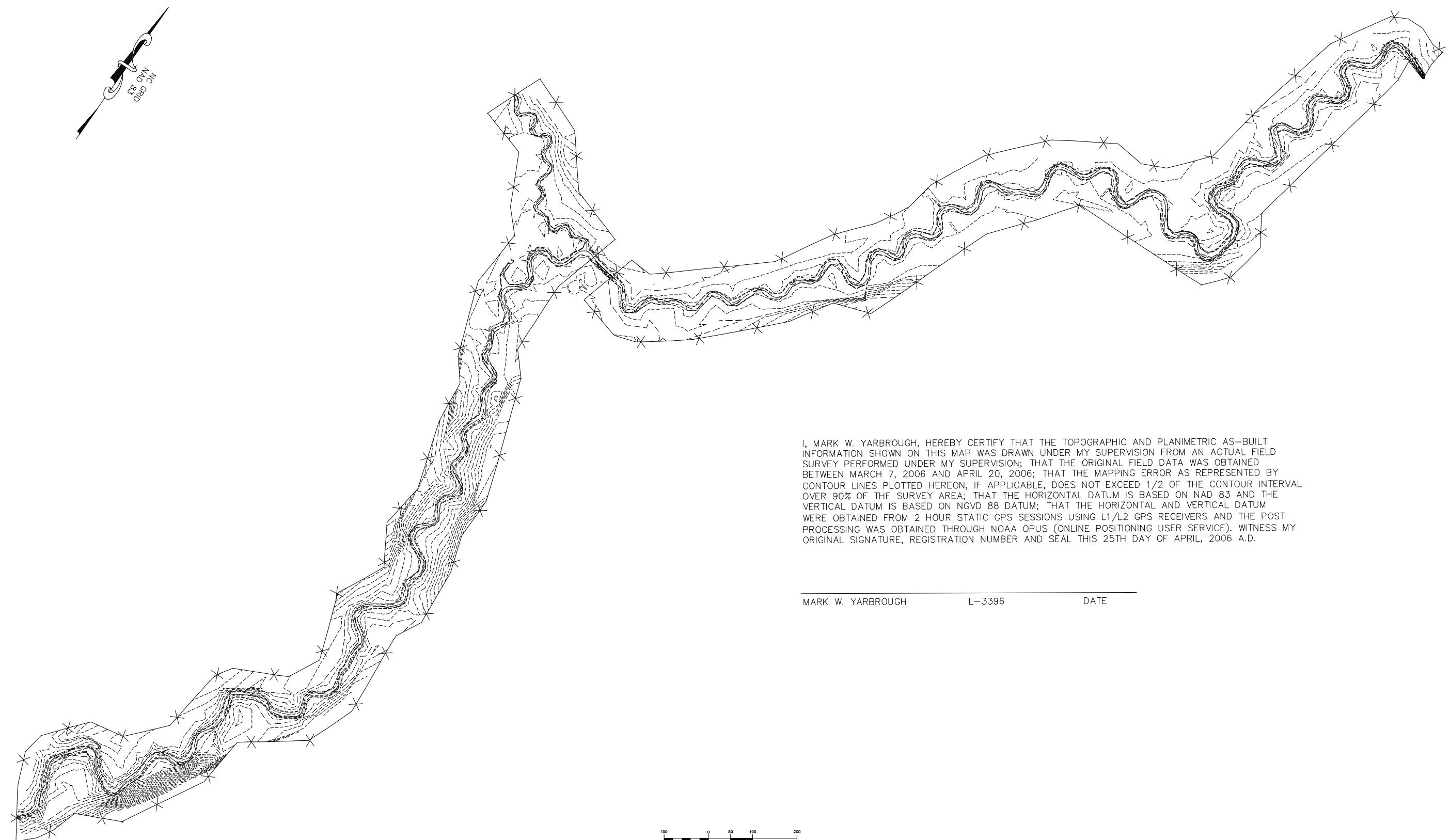
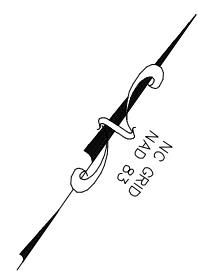
10055 RED RUN BOULEVARD, SUITE 130
OWINGS MILLS, MARYLAND 21117-4860



3101 JOHN HUMPHRIES WYND
RALEIGH, NC 27612
(919) 782-0495

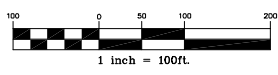


I, MARK W. YARBROUGH, HEREBY CERTIFY THAT THE TOPOGRAPHIC AND PLANIMETRIC AS-BUILT INFORMATION SHOWN ON THIS MAP WAS DRAWN UNDER MY SUPERVISION FROM AN ACTUAL FIELD SURVEY PERFORMED UNDER MY SUPERVISION; THAT THE ORIGINAL FIELD DATA WAS OBTAINED BETWEEN MARCH 7, 2006 AND APRIL 20, 2006; THAT THE MAPPING ERROR AS REPRESENTED BY CONTOUR LINES PLOTTED HEREON, IF APPLICABLE, DOES NOT EXCEED 1/2 OF THE CONTOUR INTERVAL OVER 90% OF THE SURVEY AREA; THAT THE HORIZONTAL DATUM IS BASED ON NAD 83 AND THE VERTICAL DATUM IS BASED ON NGVD 88 DATUM; THAT THE HORIZONTAL AND VERTICAL DATUM WERE OBTAINED FROM 2 HOUR STATIC GPS SESSIONS USING L1/L2 GPS RECEIVERS AND THE POST PROCESSING WAS OBTAINED THROUGH NOAA OPUS (ONLINE POSITIONING USER SERVICE). WITNESS MY ORIGINAL SIGNATURE, REGISTRATION NUMBER AND SEAL THIS 25TH DAY OF APRIL, 2006 A.D.



I, MARK W. YARBROUGH, HEREBY CERTIFY THAT THE TOPOGRAPHIC AND PLANIMETRIC AS-BUILT INFORMATION SHOWN ON THIS MAP WAS DRAWN UNDER MY SUPERVISION FROM AN ACTUAL FIELD SURVEY PERFORMED UNDER MY SUPERVISION; THAT THE ORIGINAL FIELD DATA WAS OBTAINED BETWEEN MARCH 7, 2006 AND APRIL 20, 2006; THAT THE MAPPING ERROR AS REPRESENTED BY CONTOUR LINES PLOTTED HEREON, IF APPLICABLE, DOES NOT EXCEED 1/2 OF THE CONTOUR INTERVAL OVER 90% OF THE SURVEY AREA; THAT THE HORIZONTAL DATUM IS BASED ON NAD 83 AND THE VERTICAL DATUM IS BASED ON NGVD 88 DATUM; THAT THE HORIZONTAL AND VERTICAL DATUM WERE OBTAINED FROM 2 HOUR STATIC GPS SESSIONS USING L1/L2 GPS RECEIVERS AND THE POST PROCESSING WAS OBTAINED THROUGH NOAA OPUS (ONLINE POSITIONING USER SERVICE). WITNESS MY ORIGINAL SIGNATURE, REGISTRATION NUMBER AND SEAL THIS 25TH DAY OF APRIL, 2006 A.D.

MARK W. YARBROUGH L-3396 DATE



REV. NO.	DESCRIPTION	DATE

PROJECT MANAGER	ME
DRAWN BY	TRIS
APPROVED BY	ME
FILE NAME	as-built.dwg



3101 JOHN HUMPHRIES WYND
 RALEIGH, NC 27612
 (919) 782-0495

Office Locations:
 North Carolina Georgia
 South Carolina Florida

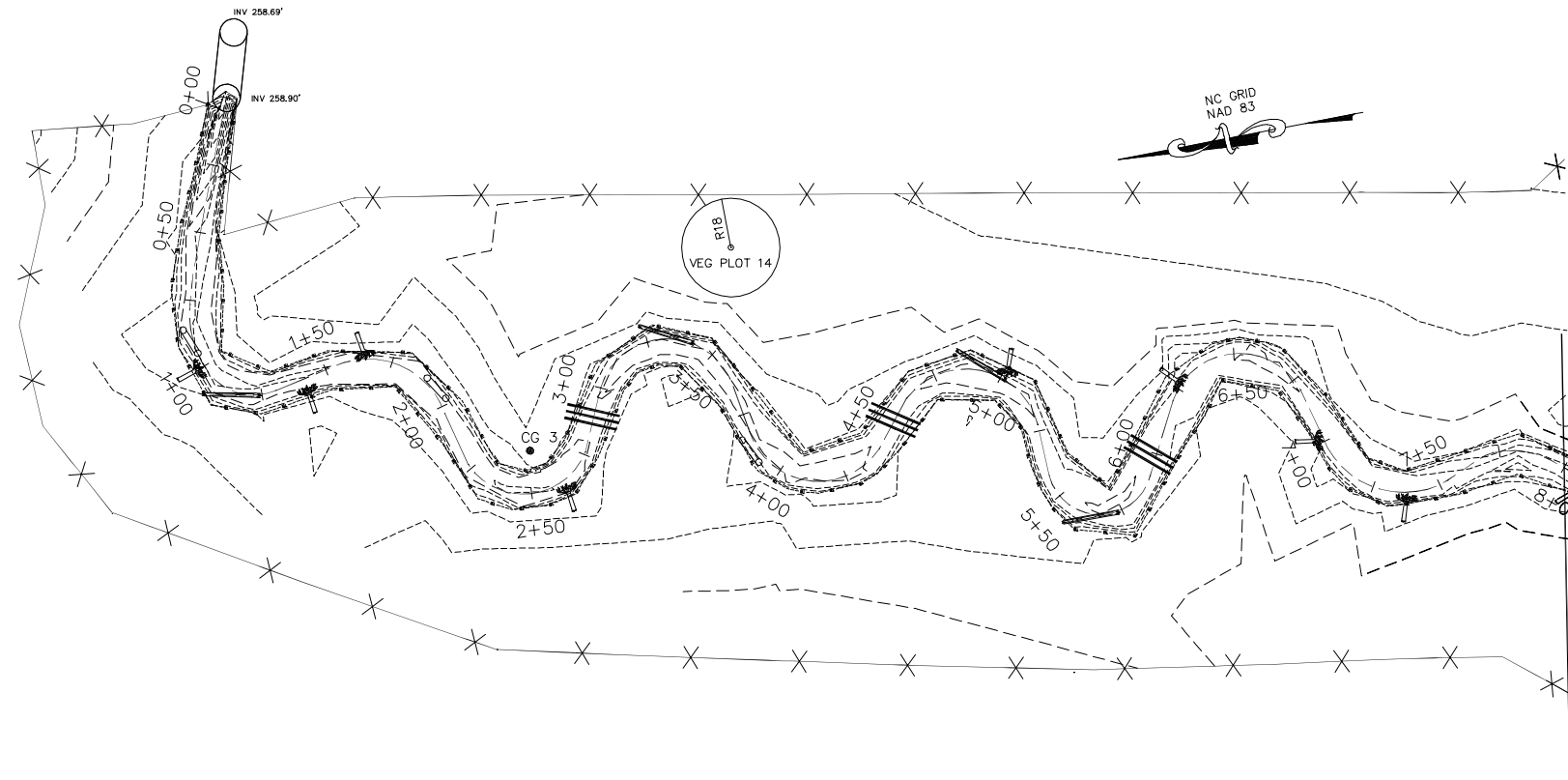
RELEASED FOR	DATE
APPROVALS	
BIDDING	
CONSTRUCTION	
RECORD DWG.	



ENVIRONMENTAL BANC & EXCHANGE, LLC
 STONEBRIDGE STREAM MITIGATION PROJECT
 CARTHAGE, NORTH CAROLINA

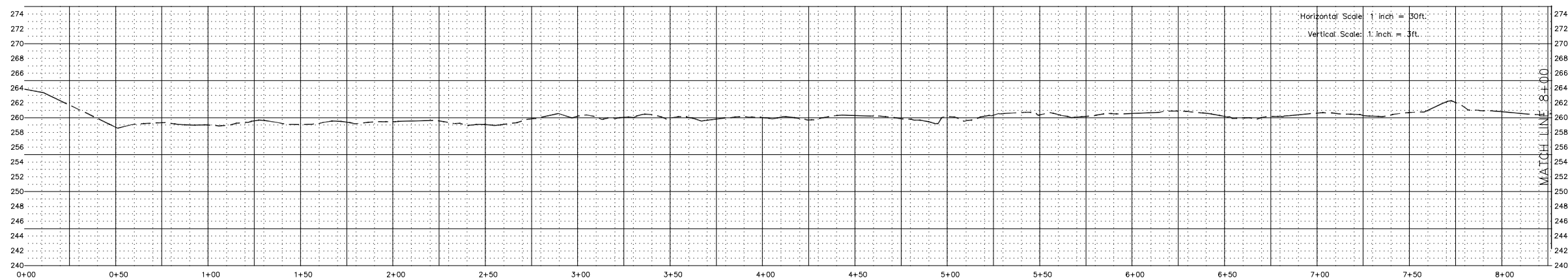
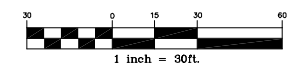
STONEBRIDGE AS-BUILT PLANS
 STREAM MITIGATION AS-BUILT SURVEY

COPYRIGHT © W.K. DICKSON & CO., INC. ALL RIGHTS RESERVED. REPRODUCTION OR USE OF THE CONTENTS OF THIS DOCUMENT, IN WHOLE OR IN PART, WITHOUT WRITTEN CONSENT OF W.K. DICKSON & CO., INC. IS PROHIBITED. THIS DOCUMENT, IN WHOLE OR IN PART, SHALL BE CONSIDERED TO BE VOID, IF ORIGINAL SIGNATURE AND SEAL ARE NOT PRESENT.



LEGEND

CENTER OF CHANNEL	---
FENCE (LIMITS OF CONSERVATION EASEMENT)	-X-X-
MAJOR CONTOUR	-----
MINOR CONTOUR	- - - - -
ROOTWAD	
LOG VANE	
LOG GRADE CONTROL	
LOG TOE PROTECTION	
CREST GAUGE	
SEMI-PERMANENT CROSS-SECTION	



REV. NO.	DESCRIPTION	DATE

PROJECT MANAGER: ME
 DRAWN BY: TRS
 APPROVED BY: ME
 FILE NAME: as-built.dwg
 DRAWING SCALE: 1" = 30'
 PROJECT DATE: 03/20/2004
 PROJECT NUMBER: 3024600RA
 PLOT DATE: 10/24/06

WK DICKSON
 community infrastructure consultants
 3101 JOHN HUMPHRIES WYND
 RALEIGH, NC 27612
 (919) 782-0495
 Office Locations:
 North Carolina
 South Carolina
 Georgia
 Florida

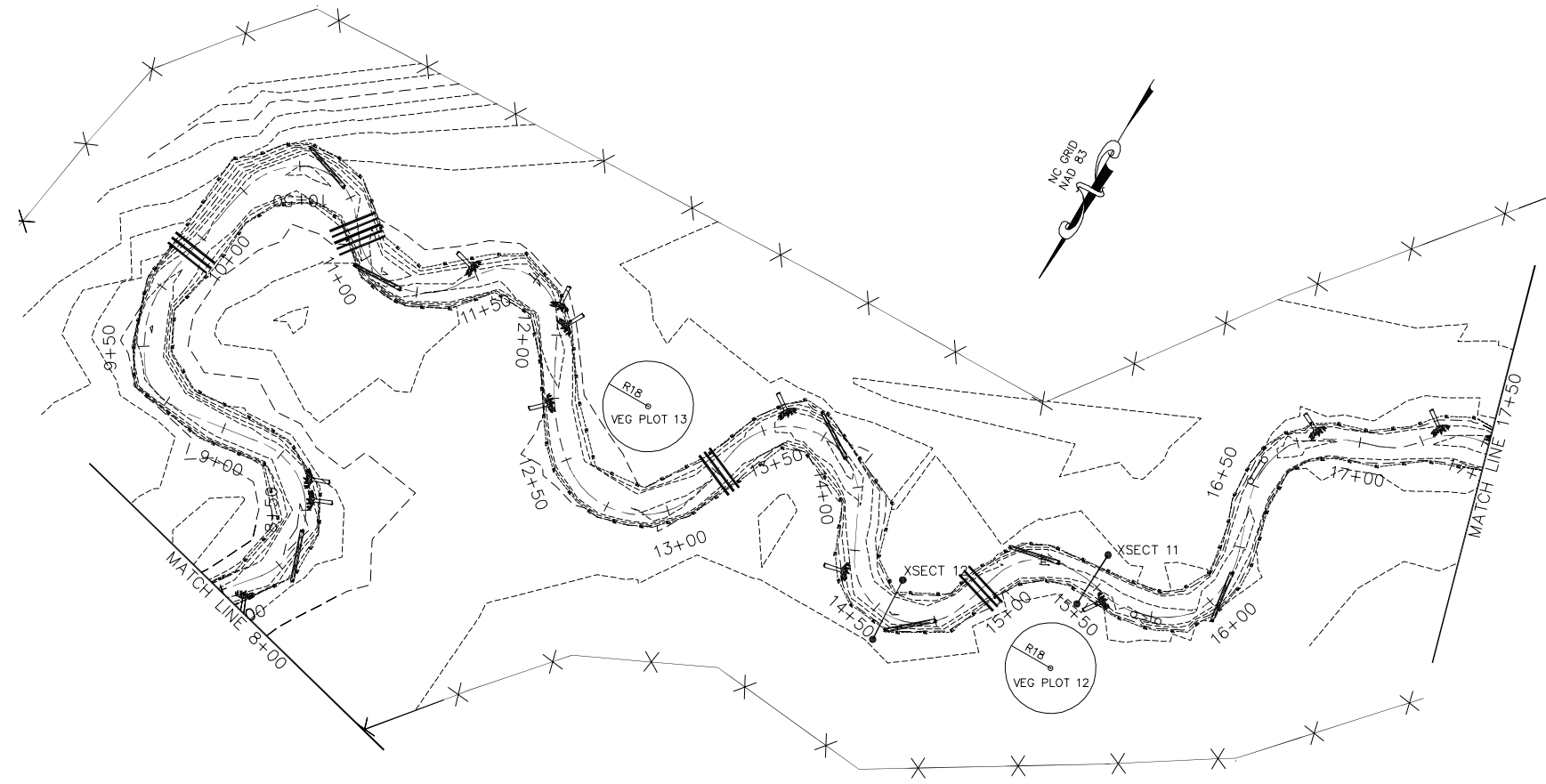
RELEASED FOR	DATE
APPROVALS	
BIDDING	
CONSTRUCTION	
RECORD DWG.	



ENVIRONMENTAL BANC & EXCHANGE, LLC
 STONEBRIDGE STREAM MITIGATION PROJECT
 CARTHAGE, NORTH CAROLINA

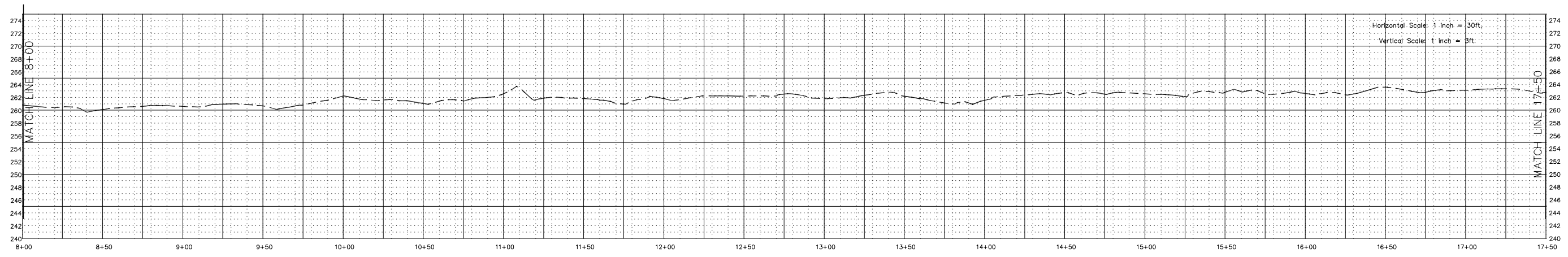
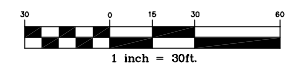
STONEBRIDGE AS-BUILT PLANS
 UT-1 STA. 0+00 TO STA. 8+00

COPYRIGHT © W.K. DICKSON & CO., INC. ALL RIGHTS RESERVED. REPRODUCTION OR USE OF THE CONTENTS OF THIS DOCUMENT, IN WHOLE OR IN PART, WITHOUT WRITTEN CONSENT OF W.K. DICKSON & CO., INC. IS PROHIBITED. THIS DOCUMENT, IN WHOLE OR IN PART, SHALL BE CONSIDERED VOID IF NOT SIGNED AND SEALED BY AN ORIGINAL ENGINEER.



LEGEND

CENTER OF CHANNEL	---
FENCE (LIMITS OF CONSERVATION EASEMENT)	-X-X-
MAJOR CONTOUR	-----
MINOR CONTOUR	- - - - -
ROOTWAD	
LOG VANE	
LOG GRADE CONTROL	
LOG TOE PROTECTION	
CREST GAUGE	
SEMI-PERMANENT CROSS-SECTION	



REV. NO.	DESCRIPTION	DATE

PROJECT MANAGER: ME
 DRAWING SCALE: 1" = 30'
 PROJECT DATE: 03/20/2004
 DRAWN BY: TRS
 PROJECT NUMBER: 3024600RA
 APPROVED BY: ME
 FILE NAME: as-built.dwg
 PLOT DATE: 10/24/06



3101 JOHN HUMPHRIES WYND
 RALEIGH, NC 27612
 (919) 782-0495
 Office Locations:
 North Carolina
 South Carolina
 Georgia
 Florida

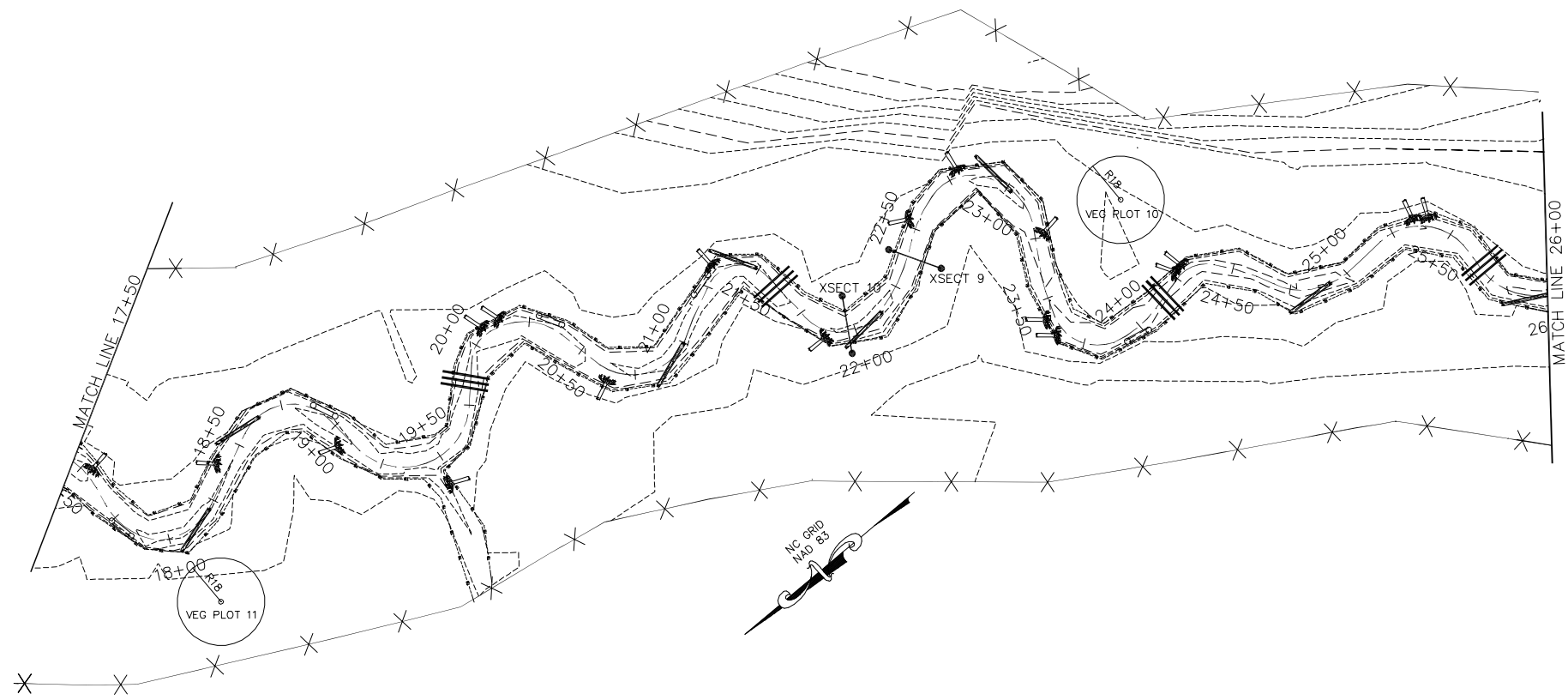
RELEASED FOR	DATE
APPROVALS	
BIDDING	
CONSTRUCTION	
RECORD DWG.	



ENVIRONMENTAL BANC & EXCHANGE, LLC
 STONEBRIDGE STREAM MITIGATION PROJECT
 CARTHAGE, NORTH CAROLINA

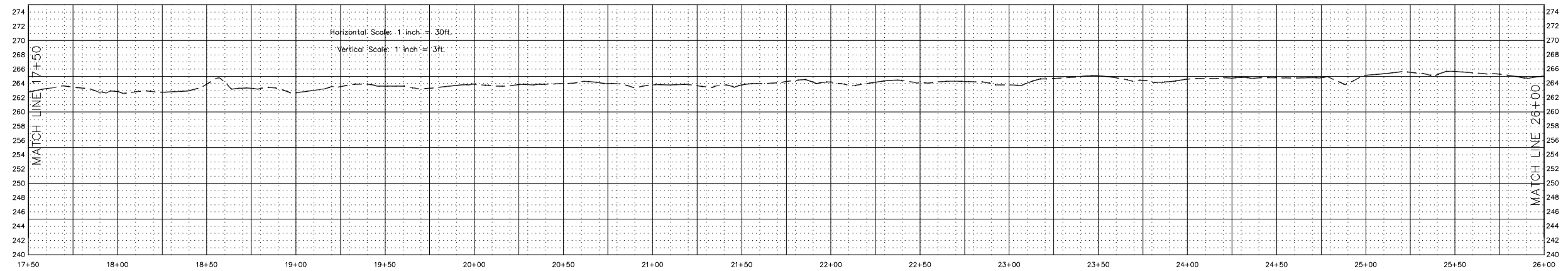
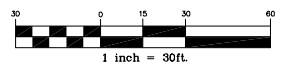
STONEBRIDGE AS-BUILT PLANS
 UT-1 STA. 8+00 TO 17+50

COPYRIGHT © ENVIRONMENTAL BANC & EXCHANGE, LLC. ALL RIGHTS RESERVED. REPRODUCTION OR USE OF THE CONTENTS OF THIS DOCUMENT IN WHOLE OR IN PART, WITHOUT WRITTEN CONSENT OF ENVIRONMENTAL BANC & EXCHANGE, LLC, IS PROHIBITED. THIS DOCUMENT, DRAWINGS, AND DATA SHALL BE CONSIDERED VOID IF ANY SIGNATURE OR SEAL SHALL BE CONSIDERED TO BE FALSE.



LEGEND

CENTER OF CHANNEL	---
FENCE (LIMITS OF CONSERVATION EASEMENT)	-X-X-
MAJOR CONTOUR	- - - - -
MINOR CONTOUR	- - - - -
ROOTWAD	
LOG VANE	
LOG GRADE CONTROL	
LOG TOE PROTECTION	
CREST GAUGE	
SEMI-PERMANENT CROSS-SECTION	



REV. NO.	DESCRIPTION	DATE

PROJECT MANAGER: ME
 DRAWN BY: TRS
 APPROVED BY: ME
 FILE NAME: ee-buil.dwg
 DRAWING SCALE: 1" = 30'
 PROJECT DATE: 03/30/2004
 PROJECT NUMBER: 3024600RA
 PLOT DATE: 10/24/06

WK DICKSON
 community infrastructure consultants
 3101 JOHN HUMPHRIES WYND RALEIGH, NC 27612 (919) 782-0495
 Office Locations: North Carolina, South Carolina, Georgia, Florida

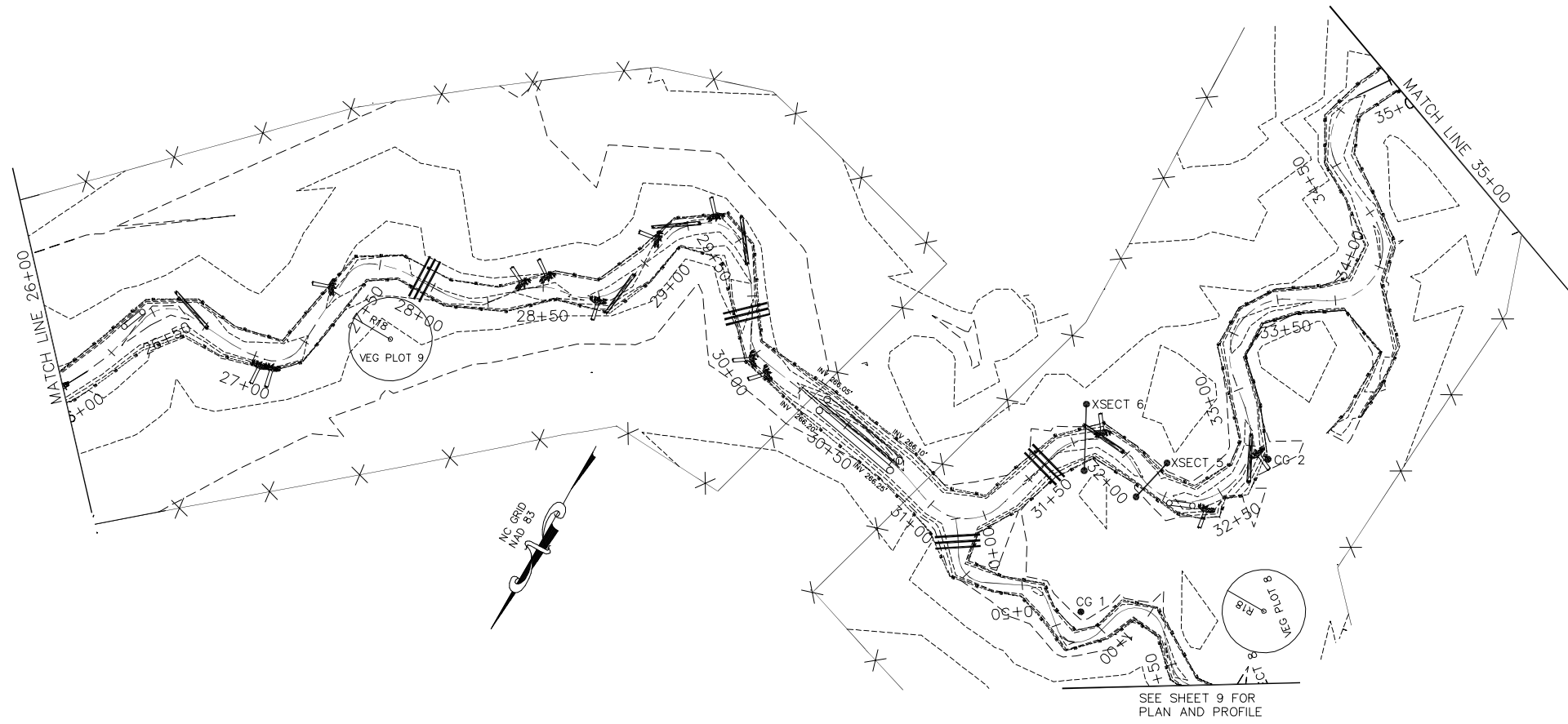
RELEASED FOR	DATE
APPROVALS	
BIDDING	
CONSTRUCTION	
RECORD DWG.	



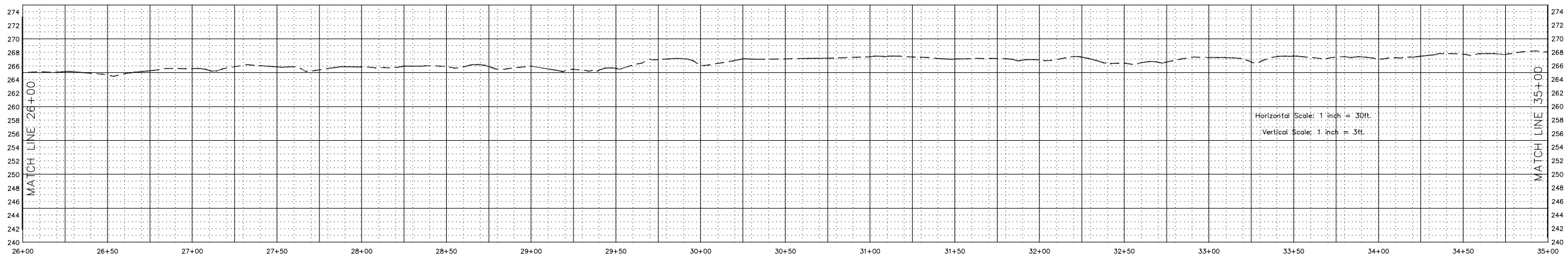
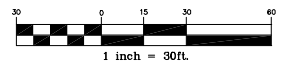
ENVIRONMENTAL BANC & EXCHANGE, LLC
 STONEBRIDGE STREAM MITIGATION PROJECT
 CARTHAGE, NORTH CAROLINA

STONEBRIDGE AS-BUILT PLANS
 UT-1 STA. 17+50 TO 26+00

Copyright © WK Dickson & Co., Inc. All rights reserved. Reproduction or use of the contents of this document, in whole or in part, without written consent of WK Dickson & Co., Inc. is prohibited. This document, in whole or in part, shall be considered void if altered, modified, or otherwise changed in any way without the written consent of WK Dickson & Co., Inc.



- LEGEND**
- CENTER OF CHANNEL
 - FENCE (LIMITS OF CONSERVATION EASEMENT)
 - MAJOR CONTOUR
 - MINOR CONTOUR
 - ROOTWAD
 - LOG VANE
 - LOG GRADE CONTROL
 - LOG TOE PROTECTION
 - CREST GAUGE
 - SEMI-PERMANENT CROSS-SECTION



REV. NO.	DESCRIPTION	DATE

PROJECT MANAGER
ME
DRAWN BY
TFS
APPROVED BY
ME
FILE NAME
as-built.dwg



3101 JOHN HUMPHRIES WYND
RALEIGH, NC 27612
(919) 782-0495

Office Locations:
North Carolina
South Carolina
Georgia
Florida

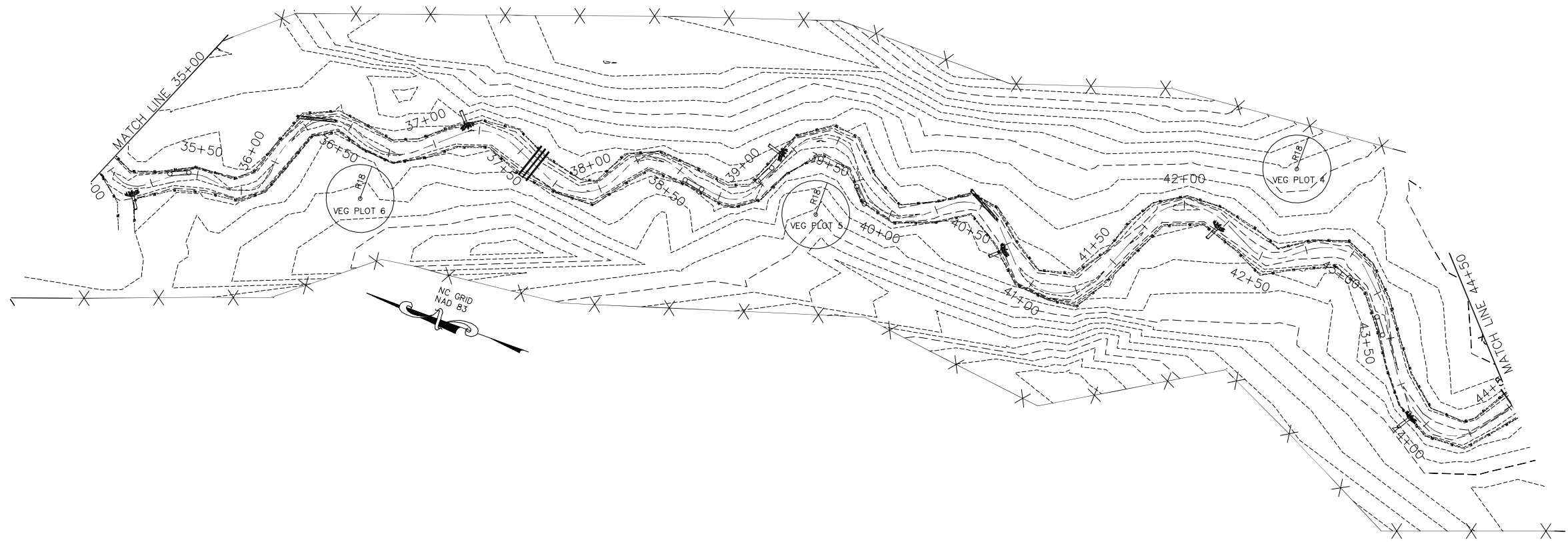
RELEASED FOR	DATE
APPROVALS	
BIDDING	
CONSTRUCTION	
RECORD DWG.	



ENVIRONMENTAL BANC & EXCHANGE, LLC
STONEBRIDGE STREAM MITIGATION PROJECT
CARTHAGE, NORTH CAROLINA

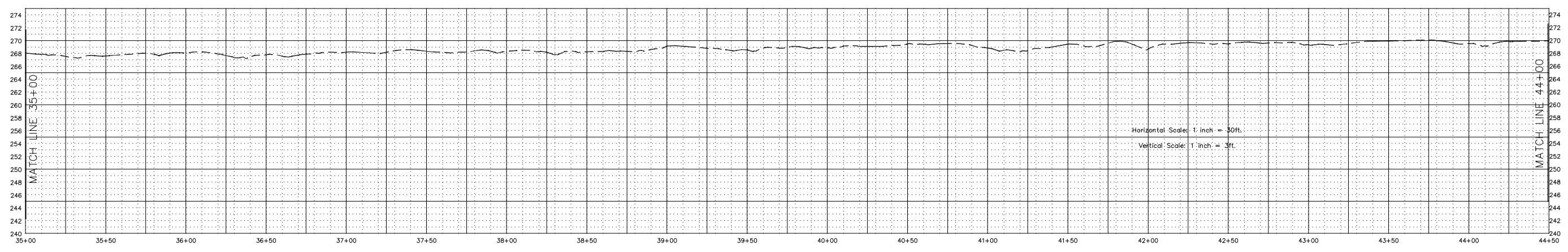
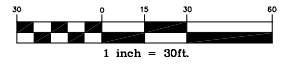
STONEBRIDGE AS-BUILT PLANS
UT-1 STA. 26+00 TO 35+00

ENVIRONMENTAL BANC & EXCHANGE, LLC. ALL RIGHTS RESERVED. REPRODUCTION OR USE OF THE CONTENTS OF THIS DOCUMENT, IN WHOLE OR IN PART, WITHOUT WRITTEN CONSENT OF ENVIRONMENTAL BANC & EXCHANGE, LLC. IS PROHIBITED. ANY SUCH REPRODUCTION OR USE SHALL BE CONSIDERED TO BE VOID.



LEGEND

CENTER OF CHANNEL	---
FENCE (LIMITS OF CONSERVATION EASEMENT)	-X-X-
MAJOR CONTOUR	-----
MINOR CONTOUR	- - - - -
ROOTWAD	
LOG VANE	
LOG GRADE CONTROL	
LOG TOE PROTECTION	
CREST GAUGE	
SEMI-PERMANENT CROSS-SECTION	



REV. NO.	DESCRIPTION	DATE

PROJECT MANAGER
ME
DRAWN BY
TRC
APPROVED BY
ME
FILE NAME
as-built.dwg



3101 JOHN HUMPHRIES WYND
RALEIGH, NC 27612
(919) 782-0495
Office Locations:
North Carolina
South Carolina
Georgia
Florida

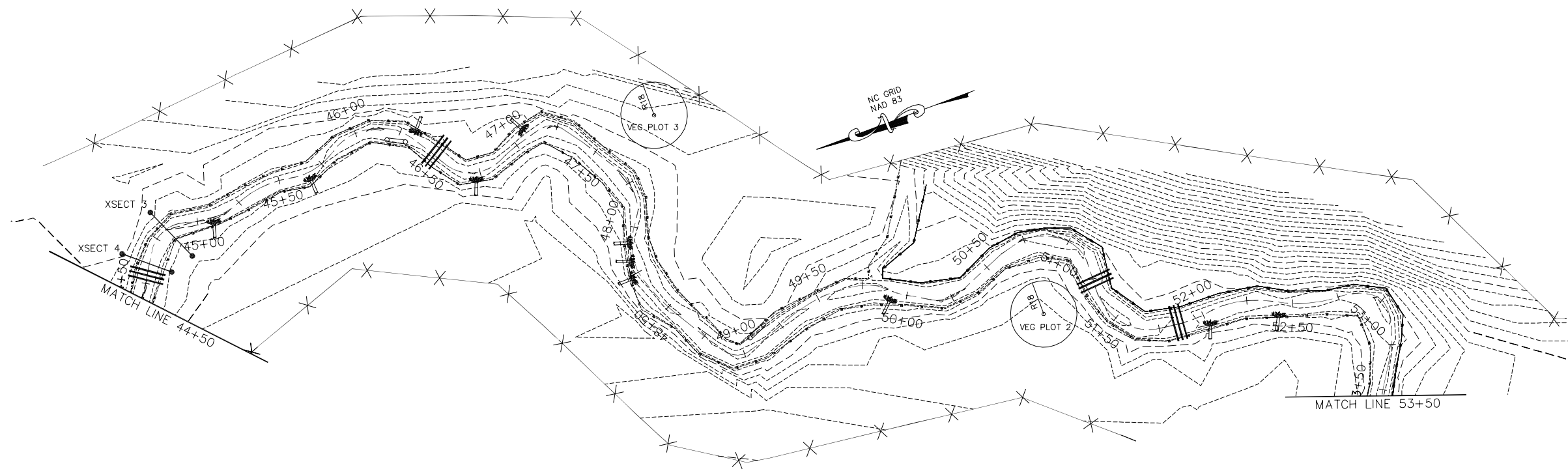
RELEASED FOR	DATE
APPROVALS	
BIDDING	
CONSTRUCTION	
RECORD DWG.	



ENVIRONMENTAL BANC & EXCHANGE, LLC
STONEBRIDGE STREAM MITIGATION PROJECT
CARTHAGE, NORTH CAROLINA

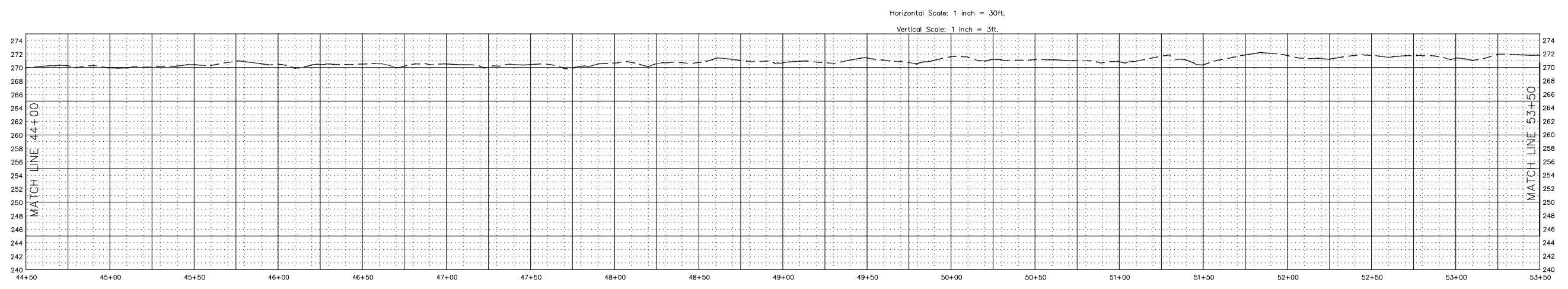
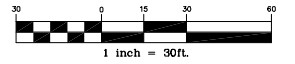
STONEBRIDGE AS-BUILT PLANS
UT-1 STA. 35+00 TO 44+00

© 2006 ENVIRONMENTAL BANC & EXCHANGE, LLC. ALL RIGHTS RESERVED. REPRODUCTION OR USE OF THE CONTENTS OF THIS DOCUMENT WITHOUT THE WRITTEN CONSENT OF ENVIRONMENTAL BANC & EXCHANGE, LLC IS PROHIBITED. ANY REPRODUCTION OR USE OF THIS DOCUMENT, IN WHOLE OR IN PART, WITHOUT WRITTEN CONSENT OF ENVIRONMENTAL BANC & EXCHANGE, LLC SHALL BE CONSIDERED TO BE INVALID. THESE COMMENTS ARE FOR INFORMATION ONLY AND SHALL BE CONSIDERED TO BE INVALID.



LEGEND

CENTER OF CHANNEL	---
FENCE (LIMITS OF CONSERVATION EASEMENT)	-X-X-
MAJOR CONTOUR	-----
MINOR CONTOUR	- - - - -
ROOTWAD	
LOG VANE	
LOG GRADE CONTROL	
LOG TOE PROTECTION	
CREST GAUGE	
SEMI-PERMANENT CROSS-SECTION	



REV. NO.	DESCRIPTION	DATE

PROJECT MANAGER: ME
 DRAWN BY: TRS
 PROJECT DATE: 03/20/2004
 PROJECT NUMBER: 3024600RA
 FILE NAME: as-built.dwg
 DATE: 10/24/06



3101 JOHN HUMPHRIES WYND
 RALEIGH, NC 27612
 (919) 782-0495
 Office Locations:
 North Carolina
 South Carolina
 Georgia
 Florida

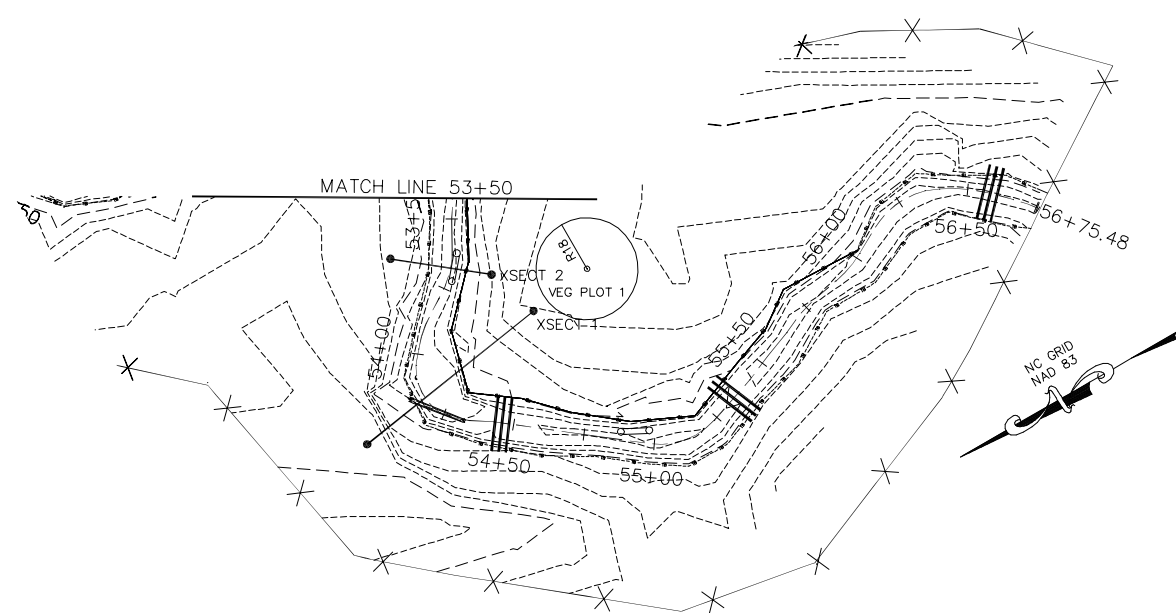
RELEASED FOR	DATE
APPROVALS	
BIDDING	
CONSTRUCTION	
RECORD DWG.	



ENVIRONMENTAL BANC & EXCHANGE, LLC
 STONEBRIDGE STREAM MITIGATION PROJECT
 CARTHAGE, NORTH CAROLINA

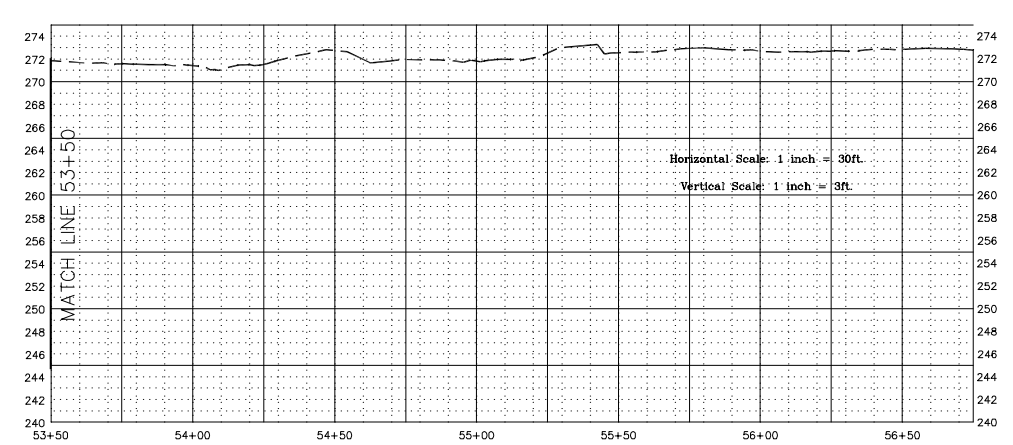
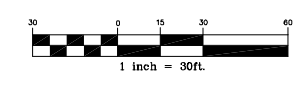
STONEBRIDGE AS-BUILT PLANS
 UT-1 STA. 44+00 TO 53+50

© 2006 ENVIRONMENTAL BANC & EXCHANGE, LLC. ALL RIGHTS RESERVED. REPRODUCTION OR USE OF THE CONTENTS OF THIS DOCUMENT, IN WHOLE OR IN PART, WITHOUT WRITTEN CONSENT OF ENVIRONMENTAL BANC & EXCHANGE, LLC, IS PROHIBITED. ANY SUCH REPRODUCTION OR USE SHALL BE CONSIDERED TO BE INVALID.



LEGEND

CENTER OF CHANNEL	---
FENCE (LIMITS OF CONSERVATION EASEMENT)	-X-X-
MAJOR CONTOUR	-----
MINOR CONTOUR	- - - - -
ROOTWAD	
LOG VANE	
LOG GRADE CONTROL	
LOG TOE PROTECTION	
CREST GAUGE	●
SEMI-PERMANENT CROSS-SECTION	—●—



REV. NO.	DESCRIPTION	DATE

PROJECT MANAGER ME	DRAWING SCALE 1" = 30'
DRAWN BY TRC	PROJECT DATE 03/20/2004
APPROVED BY ME	PROJECT NUMBER
FILE NAME as-built.dwg	PLT DATE 10/24/06

WK DICKSON
 community infrastructure consultants
 3101 JOHN HUMPHRIES WYND
 RALEIGH, NC 27612
 (919) 782-0495
 Office Locations:
 North Carolina
 South Carolina
 Georgia
 Florida

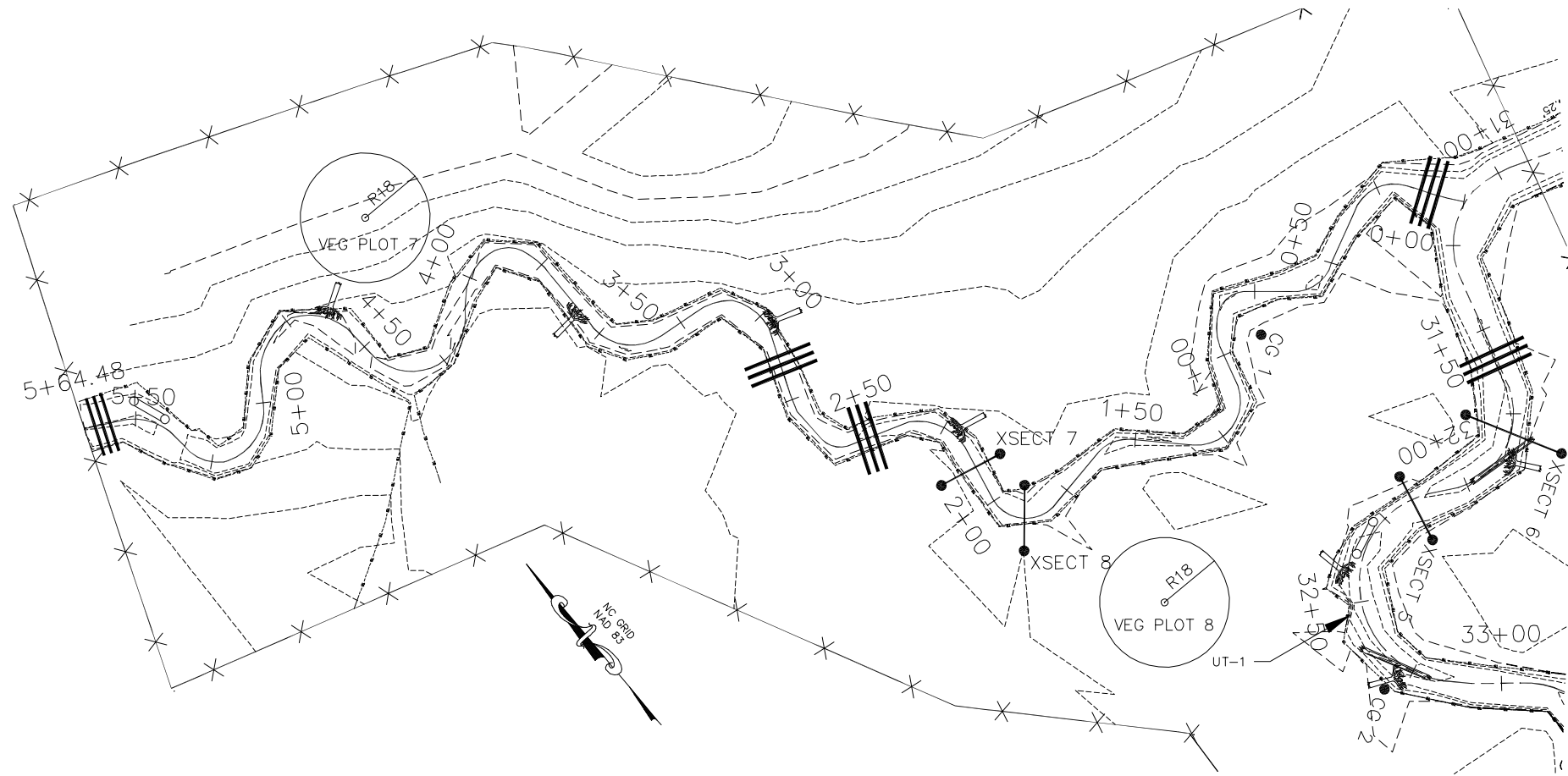
RELEASED FOR	DATE
APPROVALS	
BIDDING	
CONSTRUCTION	
RECORD DWG.	



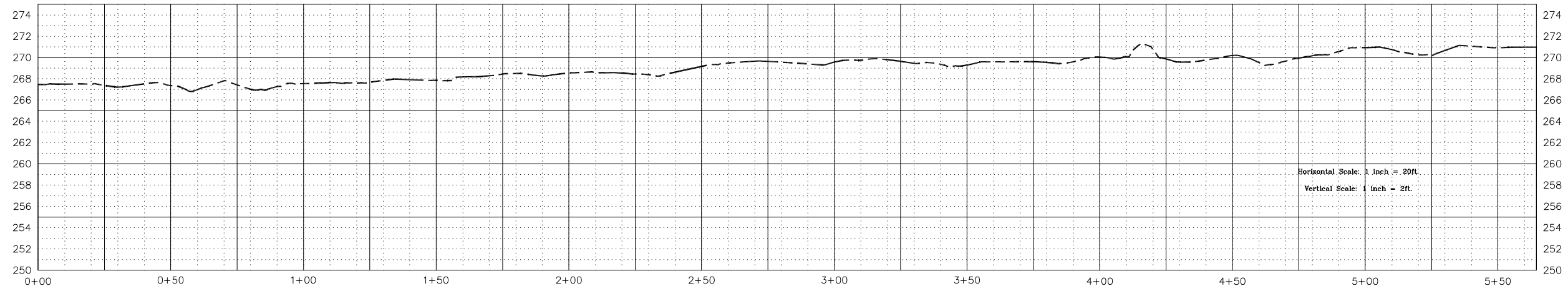
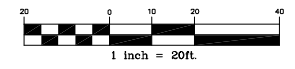
ENVIRONMENTAL BANC & EXCHANGE, LLC
 STONEBRIDGE STREAM MITIGATION PROJECT
 CARTHAGE, NORTH CAROLINA

STONEBRIDGE AS-BUILT PLANS
 UT-1 STA. 53+50 TO 56+75

© 2006 W.K. DICKSON & CO., INC. ALL RIGHTS RESERVED. REPRODUCTION OR USE OF THE CONTENTS OF THIS DOCUMENT, IN WHOLE OR IN PART, WITHOUT WRITTEN CONSENT OF W.K. DICKSON & CO., INC. IS STRICTLY PROHIBITED. ANY UNAUTHORIZED REPRODUCTION OR USE OF THIS DOCUMENT, IN WHOLE OR IN PART, SHALL BE CONSIDERED TO BE A VIOLATION OF FEDERAL AND STATE LAWS.



- LEGEND**
- CENTER OF CHANNEL
 - FENCE (LIMITS OF CONSERVATION EASEMENT)
 - MAJOR CONTOUR
 - MINOR CONTOUR
 - ROOTWAD
 - LOG VANE
 - LOG GRADE CONTROL
 - LOG TOE PROTECTION
 - CREST GAUGE
 - SEMI-PERMANENT CROSS-SECTION



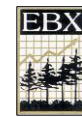
REV. NO.	DESCRIPTION	DATE
1	REVISION PER LQS COMMENTS	9/02/06

PROJECT MANAGER
ME
DRAWN BY
TRC
APPROVED BY
ME
FILE NAME
as-built.dwg



3101 JOHN HUMPHRIES WYND
RALEIGH, NC 27612
(919) 782-0495
Office Locations:
North Carolina
South Carolina
Georgia
Florida

RELEASED FOR	DATE
APPROVALS	
BIDDING	
CONSTRUCTION	
RECORD DWG.	



ENVIRONMENTAL BANC & EXCHANGE, LLC
STONEBRIDGE STREAM MITIGATION PROJECT
CARTHAGE, NORTH CAROLINA

STONEBRIDGE AS-BUILT PLANS
UT-2 STA. 0+00 TO 5+64