

AS-BUILT SURVEY OF UT TO BALD CREEK STREAM RESTORATION

SCO# 07-0714901
YANCEY COUNTY

REFERENCES:
OWNER:
NORTH CAROLINA ECOSYSTEM ENHANCEMENT PROGRAM
1652 MAIL SERVICE CENTER
RALEIGH, NC 27099-1652
(919)715-0476
EEP PROJ. MGR.: HARRY TSOIMIDES
EEP REVIEW COORDINATOR: WYATT BROWN

CONTRACTOR:
RIVER WORKS, INC.
CARY, NC
(919)459-9001

DESIGNER:
URS CORPORATION - NORTH CAROLINA
MORRISVILLE, NC
(919)461-1597

CONSERVATION EASEMENT
REFERENCES:
YANCEY CO. REGISTER OF DEEDS- D.B. 589, PG. 441 & M.B. 03, PG. 222

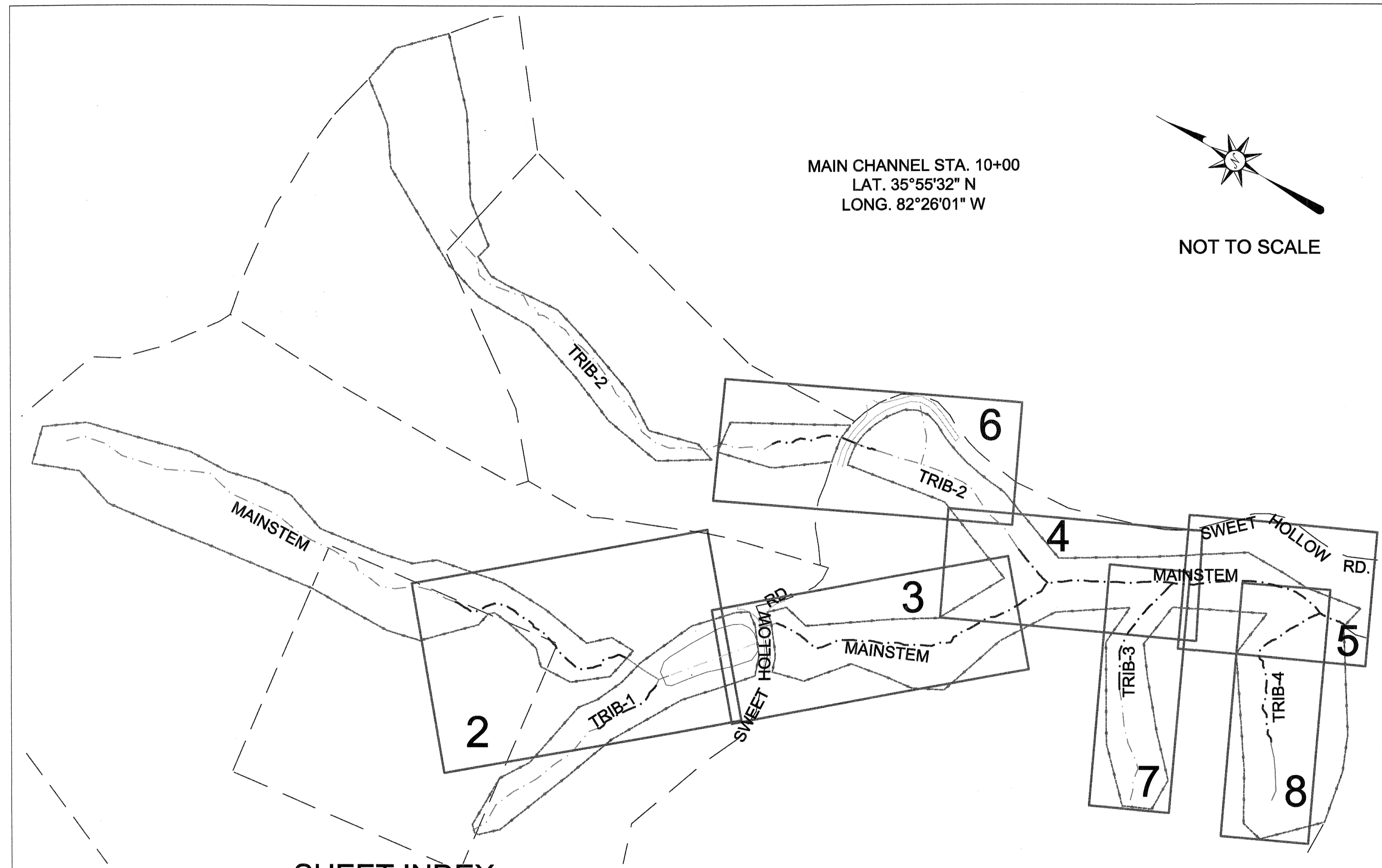
I, ELISABETH G. TURNER, AS A DULY REGISTERED PROFESSIONAL LAND SURVEYOR IN THE STATE OF NORTH CAROLINA, HEREBY CERTIFY THAT THE DATA SHOWN ON THIS DRAWING, WAS OBTAINED UNDER MY SUPERVISION, IS AN ACCURATE AND COMPLETE REPRESENTATION OF WHAT WAS CONSTRUCTED IN THE FIELD, AND THAT THE PHYSICAL DIMENSIONS OR ELEVATIONS SHOWN THUS ARE AS-BUILT CONDITIONS EXCEPT WHERE OTHERWISE NOTED HEREON. WITNESS MY ORIGINAL SIGNATURE, REGISTRATION NUMBER, AND SEAL THIS 1st DAY OF MARCH, 2012.

Elisabeth G. Turner
ELISABETH G. TURNER, P.L.S. #L-4440
SEAL
L-4440
NORTH CAROLINA PROFESSIONAL LAND SURVEYOR
ELISABETH G. TURNER

I, ELISABETH G. TURNER, CERTIFY THAT THIS MAP WAS DRAWN UNDER MY SUPERVISION FROM AN ACTUAL SURVEY MADE UNDER MY SUPERVISION AND THE FOLLOWING INFORMATION WAS USED TO ESTABLISH THE CONTROL USED TO PERFORM THE SURVEY:

- (1) CLASS OF SURVEY: CLASS C
- (2) POSITIONAL ACCURACY AT 95% CONFIDENCE LEVEL:
HORIZONTAL= 0.016 USFT. VERTICAL= 0.147 USFT
- (3) TYPE OF GPS FIELD PROCEDURE:
REAL-TIME KINEMATIC/RTS
- (4) DATES OF CONTROL SURVEY: SEPT. 12-13, 2011
- (5) DATUM/EPOCH: NAD83 (2007)
- (6) PUBLISHED/FIXED-CONTROL USE:
TLS#2NL NORTHING=808017.823 USFT.
EASTING=984080.701 USFT. ELEV=2746.203 USFT
- (7) GEOID MODEL: GEOID 03
- (8) COMBINED GRID FACTOR: 0.999814261
- (9) UNITS: US FEET

Elisabeth G. Turner
ELISABETH G. TURNER, P.L.S. #L-4440
SEAL
L-4440
NORTH CAROLINA PROFESSIONAL LAND SURVEYOR
ELISABETH G. TURNER



SHEET INDEX

- SHEET 1 - TITLE, VICINITY MAP, SHEET INDEX, AND GENERAL NOTES
- SHEET 2 - PLAN & PROFILE - MAINSTEM 18+30 TO 20+60, TRIB-1 13+10 TO 14+40
- SHEET 3 - PLAN & PROFILE - MAINSTEM 25+00 TO 29+40
- SHEET 4 - PLAN & PROFILE - MAINSTEM 29+40 TO 33+40, TRIB-2 23+60 TO 24+43
- SHEET 5 - PLAN & PROFILE - MAINSTEM 33+40 TO 36+61
- SHEET 6 - PLAN & PROFILE - TRIB-2 18+20 TO 20+20
- SHEET 7 - PLAN & PROFILE - TRIB-3 12+10 TO 14+53
- SHEET 8 - PLAN & PROFILE - TRIB-4 11+10 TO 14+35
- SHEET 9 - PLANTING PLAN
- SHEET 10 - PLANTING PLAN
- SHEET 11 - CROSS SECTIONS

GENERAL NOTES

1. ALL DISTANCES ARE HORIZONTAL UNLESS OTHERWISE NOTED.
2. THE VERTICAL DATUM IS NAVD88.
3. THE BASIS OF BEARINGS IS NCGS STATE PLANE GRID COORDINATES NAD83 (NSRS 2007) DATUM.
4. CONTROL SET USING RTK GPS METHODS AND THE NCGS CORS NETWORK. CONTROL ESTABLISHED THROUGH AVERAGED 180 EPOCH RTK OBSERVATIONS. CONTROL VERIFIED AND TIED TO CONTROL DATA PROVIDED BY DESIGNER.
5. THIS MAP IS NOT FOR RECORDATION, SALES, OR CONVEYANCES AND DOES NOT COMPLY WITH G.S. 47-30 MAPPING REQUIREMENTS.
6. THE LONGITUDINAL STATIONING SHOWN ON THE PLAN VIEW AND LONGITUDINAL PROFILE IS THE AS-BUILT SURVEY LENGTH WHICH MAY VARY FROM THE FINAL DESIGN LENGTH.
7. INFORMATION SHOWN OUTSIDE THE AS-BUILT LIMITS OF DISTURBANCE WAS TAKEN FROM EXISTING CONDITIONS AND DESIGN DATA PROVIDED BY THE DESIGNER.
8. CONSERVATION EASEMENT, PROPERTY LINES, AND WETLANDS PROVIDED BY DESIGNER.

CONTROL POINTS

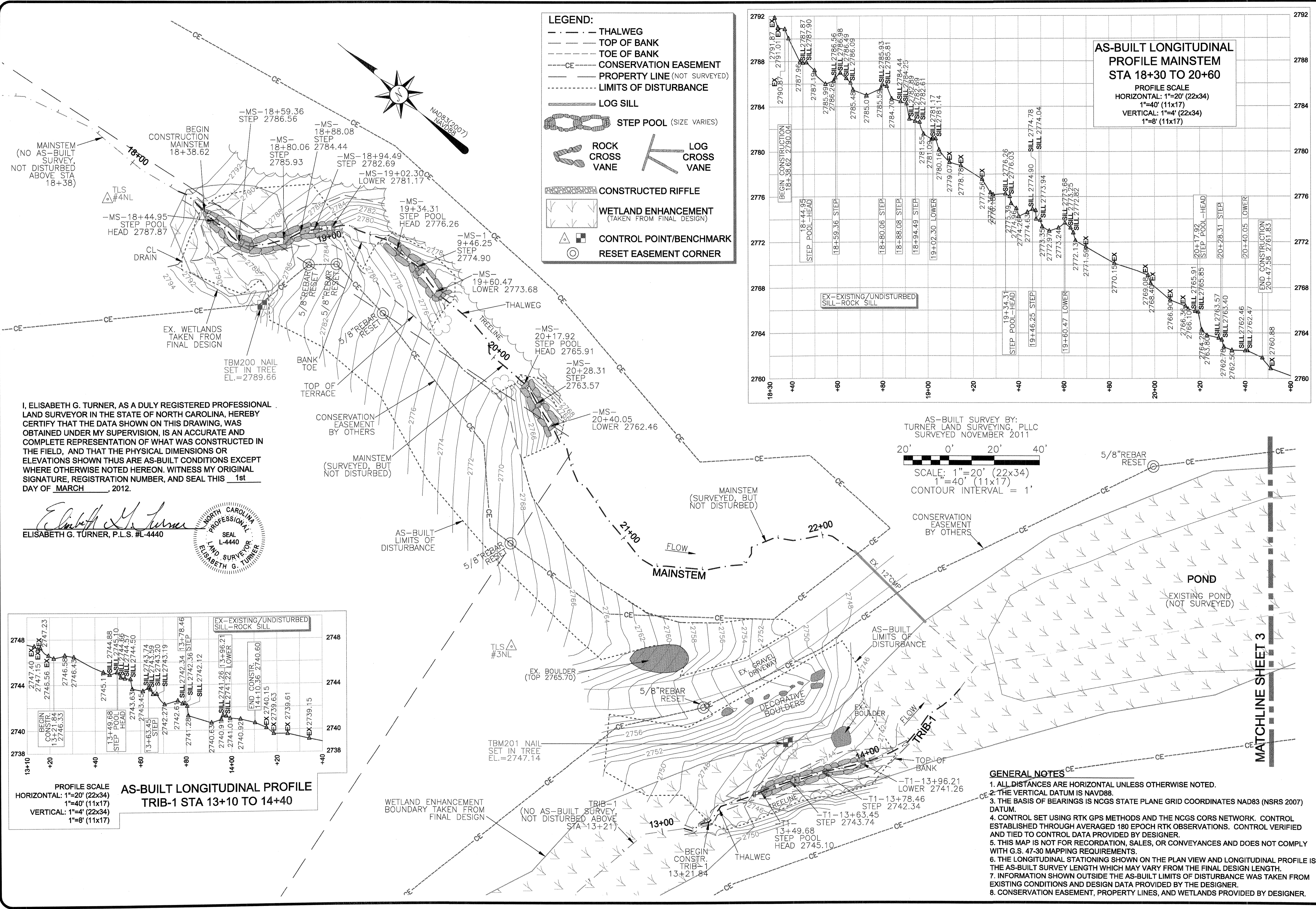
Pnt.#	Northing(Y)	Easting(X)	Elev(Z)	Description
1	807750.16	984449.73	2718.59	TLS #1 NAIL
2	808017.82	984080.70	2746.20	TLS #2 NAIL
3	808315.53	983630.28	2768.75	TLS #3 NAIL
4	808578.83	983667.43	2800.10	TLS #4 NAIL
7	808123.08	984225.39	2737.30	TLS #7 NAIL
200	808496.72	983675.45	2789.66	TBM NAIL IN TREE
201	808194.95	983676.10	2747.14	TBM NAIL IN TREE
202	808182.03	984239.52	2730.81	TBM NAIL IN TREE
203	807670.33	984247.33	2696.58	TBM HUB&TACK
204	807230.29	984431.40	2675.08	TBM HUB&TACK
205	807171.99	984488.83	2669.86	TBM NAIL IN TREE

REVISIONS, DATE AND INITIAL:
REVISED: 02/29/12 ADDED SHEET 11 - CROSS SECTIONS, EGT

TITLE
AS-BUILT SURVEY OF
UT TO BALD CREEK STREAM RESTORATION
SCO# 07-0714901

TURNER LAND SURVEYING, PLLC
3201 Glenridge Drive, Raleigh, NC 27604 - (919)715-1378
P-0702 - Lturner21@att.net - Dturner11@att.net
WWW.TURNERLANDSURVEYING.COM

DATE: 12/01/2011
SURVEYED BY: DST/EGT
DRAWN BY: DST/EGT
REVIEWED BY: DST/EGT
PROJECT: TLS-11-018
FILE: UT TO BALD CREEK_92596_AB_F
SCALE: AS SHOWN
SHEET 1



LEGEND:

- THALWEG
- - - TOP OF BANK
- - - TOE OF BANK
- - - CE CONSERVATION EASEMENT
- - - PROPERTY LINE (NOT SURVEYED)
- - - LIMITS OF DISTURBANCE
- LOG SILL
- STEP POOL (SIZE VARIES)
- ROCK CROSS VANE
- LOG CROSS VANE
- CONSTRUCTED RIFFLE
- WETLAND ENHANCEMENT (TAKEN FROM FINAL DESIGN)
- △ CONTROL POINT/BENCHMARK
- RESET EASEMENT CORNER

AS-BUILT LONGITUDINAL PROFILE MAINSTEM STA 18+30 TO 20+60

PROFILE SCALE
 HORIZONTAL: 1"=20' (22x34)
 1"=40' (11x17)
 VERTICAL: 1"=4' (22x34)
 1"=8' (11x17)

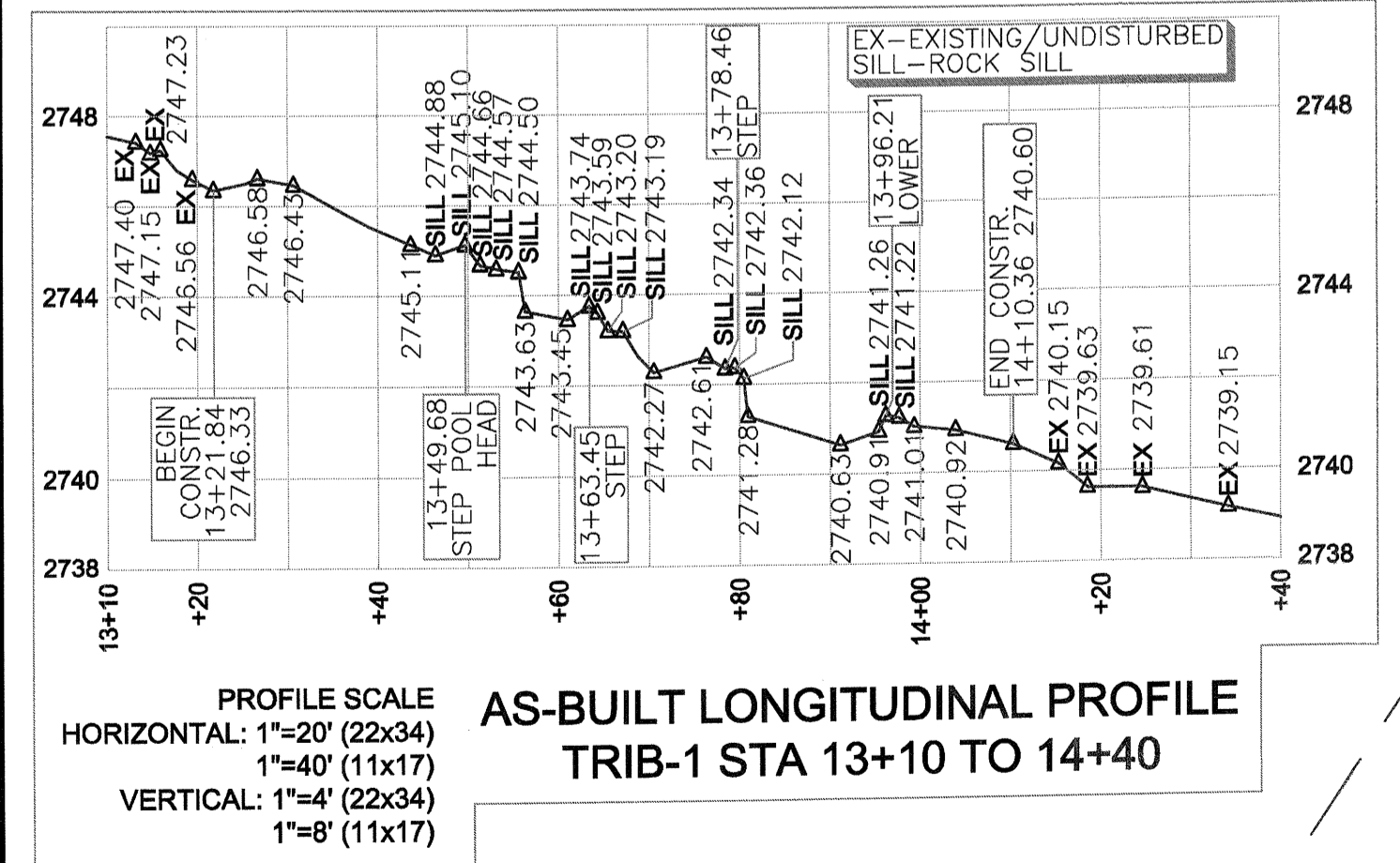
AS-BUILT SURVEY BY:
 TURNER LAND SURVEYING, PLLC
 SURVEYED NOVEMBER 2011

SCALE: 1"=20' (22x34)
 1"=40' (11x17)
 CONTOUR INTERVAL = 1'

I, ELISABETH G. TURNER, AS A DULY REGISTERED PROFESSIONAL LAND SURVEYOR IN THE STATE OF NORTH CAROLINA, HEREBY CERTIFY THAT THE DATA SHOWN ON THIS DRAWING, WAS OBTAINED UNDER MY SUPERVISION, IS AN ACCURATE AND COMPLETE REPRESENTATION OF WHAT WAS CONSTRUCTED IN THE FIELD, AND THAT THE PHYSICAL DIMENSIONS OR ELEVATIONS SHOWN THUS ARE AS-BUILT CONDITIONS EXCEPT WHERE OTHERWISE NOTED HEREON. WITNESS MY ORIGINAL SIGNATURE, REGISTRATION NUMBER, AND SEAL THIS 1st DAY OF MARCH, 2012.

Elisabeth G. Turner
 ELISABETH G. TURNER, P.L.S. #L-4440

SEAL
 L-4440
 LAND SURVEYOR
 ELISABETH G. TURNER



- GENERAL NOTES**
1. ALL DISTANCES ARE HORIZONTAL UNLESS OTHERWISE NOTED.
 2. THE VERTICAL DATUM IS NAVD88.
 3. THE BASIS OF BEARINGS IS NCGS STATE PLANE GRID COORDINATES NAD83 (NSRS 2007) DATUM.
 4. CONTROL SET USING RTK GPS METHODS AND THE NCGS CORS NETWORK. CONTROL ESTABLISHED THROUGH AVERAGED 180 EPOCH RTK OBSERVATIONS. CONTROL VERIFIED AND TIED TO CONTROL DATA PROVIDED BY DESIGNER.
 5. THIS MAP IS NOT FOR RECORDATION, SALES, OR CONVEYANCES AND DOES NOT COMPLY WITH G.S. 47-30 MAPPING REQUIREMENTS.
 6. THE LONGITUDINAL STATIONING SHOWN ON THE PLAN VIEW AND LONGITUDINAL PROFILE IS THE AS-BUILT SURVEY LENGTH WHICH MAY VARY FROM THE FINAL DESIGN LENGTH.
 7. INFORMATION SHOWN OUTSIDE THE AS-BUILT LIMITS OF DISTURBANCE WAS TAKEN FROM EXISTING CONDITIONS AND DESIGN DATA PROVIDED BY THE DESIGNER.
 8. CONSERVATION EASEMENT, PROPERTY LINES, AND WETLANDS PROVIDED BY DESIGNER.

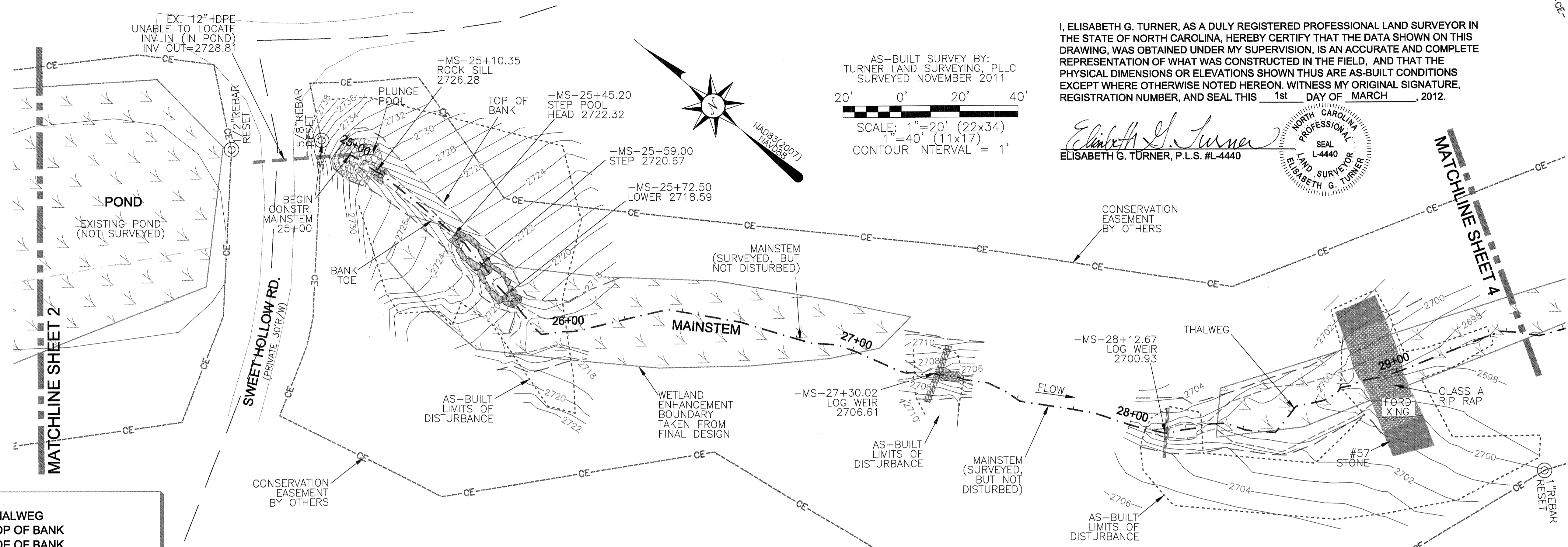
REVISIONS, DATE AND INITIAL:
 REVISED: 02/29/12 ADDED SHEET 11 - CROSS SECTIONS, ECT

TURNER LAND SURVEYING, PLLC
 3201 Glenridge Drive, Raleigh, NC 27604 -- (919)875-1378
 P-0702 -- Lturner921@att.net -- Dturner119@att.net
 WWW.TURNERLANDSURVEYING.COM

PLAN VIEW & PROFILE
 AS-BUILT SURVEY OF
 UT TO BALD CREEK STREAM RESTORATION
 SCO# 07-0714901

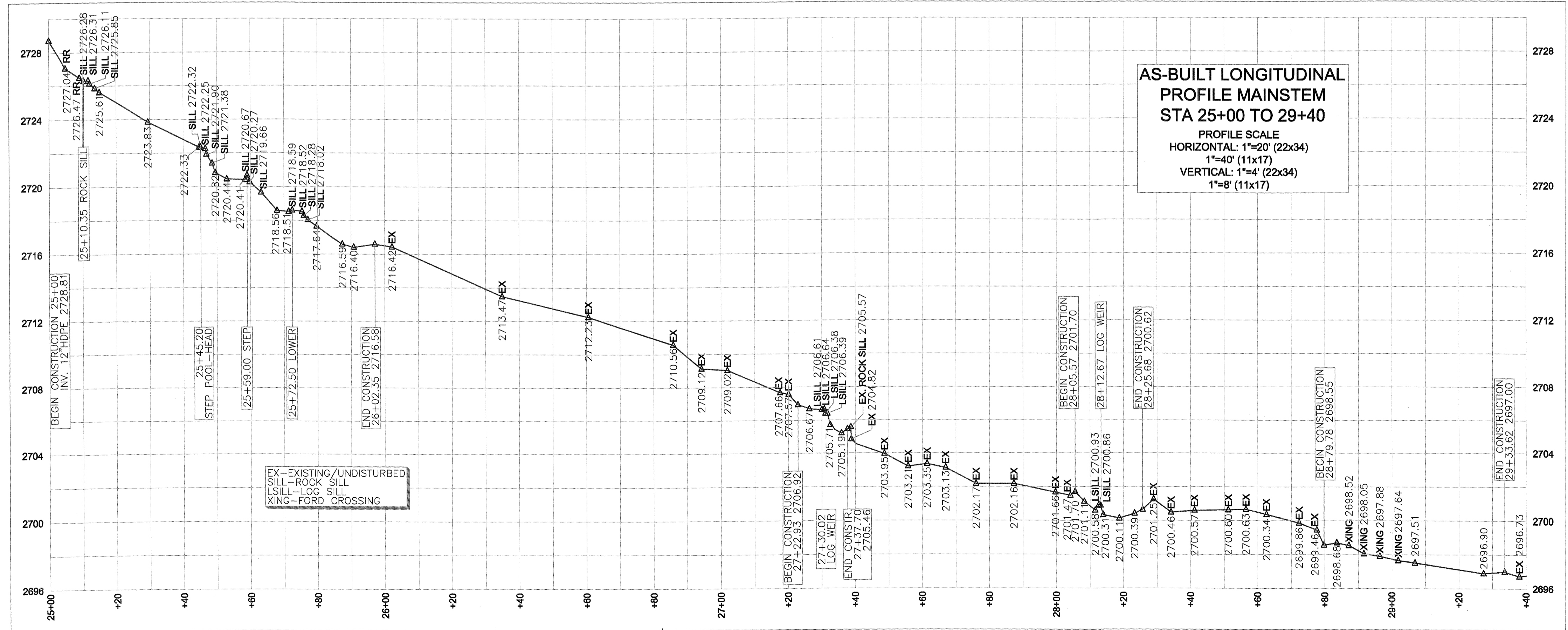
YANCEY COUNTY
 NORTH CAROLINA

DATE: 12/01/2011
 SURVEYED BY: DST/EGT
 DRAWN BY: DST/EGT
 REVIEWED BY: DST/EGT
 PROJECT: TLS-11-018
 FILE: UT TO BALD CREEK_92596_AB_F
 SCALE: AS SHOWN
 SHEET 2



- LEGEND:**
- - - THALWEG
 - - - TOP OF BANK
 - - - TOE OF BANK
 - - - CE CONSERVATION EASEMENT
 - - - PROPERTY LINE (NOT SURVEYED)
 - - - LIMITS OF DISTURBANCE
 - LOG SILL
 - STEP POOL (SIZE VARIES)
 - ROCK CROSS VANE
 - LOG CROSS VANE
 - CONSTRUCTED RIFFLE
 - WETLAND ENHANCEMENT (TAKEN FROM FINAL DESIGN)
 - △ CONTROL POINT/BENCHMARK
 - RESET EASEMENT CORNER

- GENERAL NOTES**
1. ALL DISTANCES ARE HORIZONTAL UNLESS OTHERWISE NOTED.
 2. THE VERTICAL DATUM IS NAVD88.
 3. THE BASIS OF BEARINGS IS NCGS STATE PLANE GRID COORDINATES NAD83 (NSRS 2007) DATUM.
 4. CONTROL SET USING RTK GPS METHODS AND THE NCGS CORS NETWORK. CONTROL ESTABLISHED THROUGH AVERAGED 180 EPOCH RTK OBSERVATIONS. CONTROL VERIFIED AND TIED TO CONTROL DATA PROVIDED BY DESIGNER.
 5. THIS MAP IS NOT FOR RECORDATION, SALES, OR CONVEYANCES AND DOES NOT COMPLY WITH G.S. 47-30 MAPPING REQUIREMENTS.
 6. THE LONGITUDINAL STATIONING SHOWN ON THE PLAN VIEW AND LONGITUDINAL PROFILE IS THE AS-BUILT SURVEY LENGTH WHICH MAY VARY FROM THE FINAL DESIGN LENGTH.
 7. INFORMATION SHOWN OUTSIDE THE AS-BUILT LIMITS OF DISTURBANCE WAS TAKEN FROM EXISTING CONDITIONS AND DESIGN DATA PROVIDED BY THE DESIGNER.
 8. CONSERVATION EASEMENT, PROPERTY LINES, AND WETLANDS PROVIDED BY DESIGNER.



TURNER LAND SURVEYING, PLLC
 3201 Glenridge Drive, Raleigh, NC 27604 - (919)875-1378
 P-0702 - Lturner@tts.net - Dturner11@att.net
 WWW.TURNERLANDSURVEYING.COM

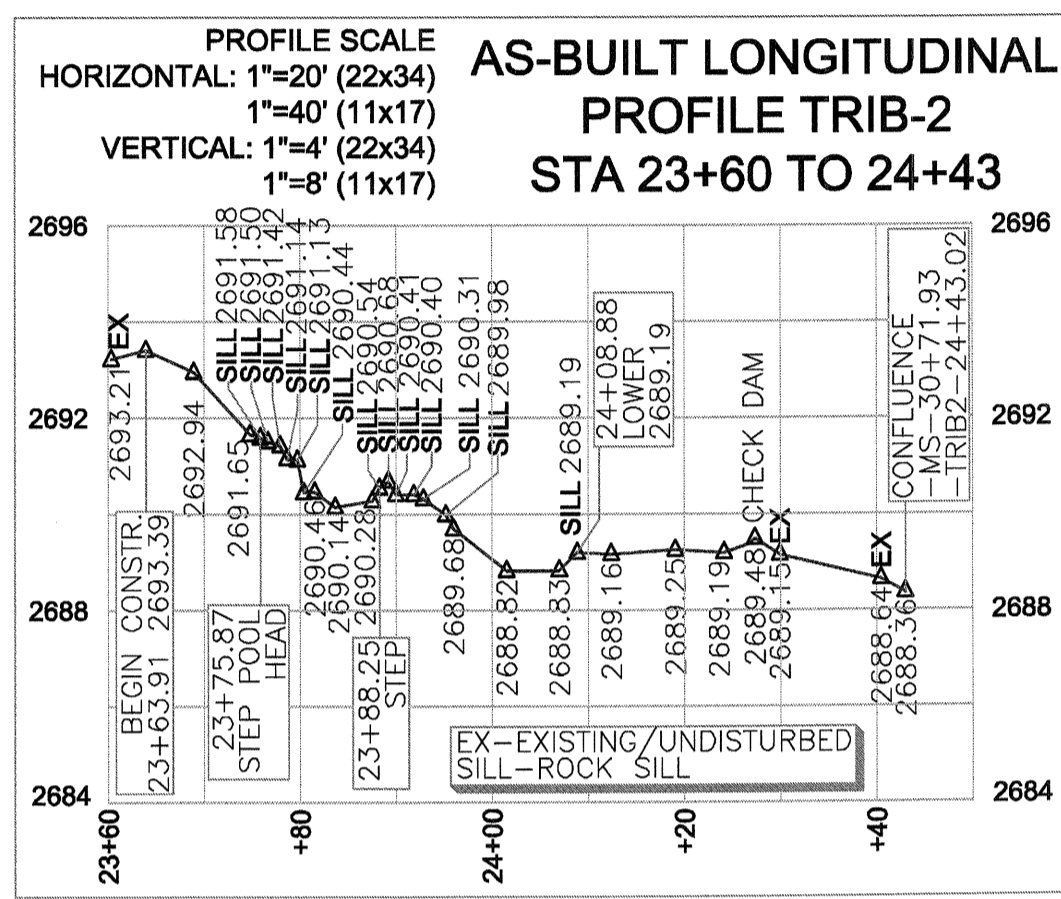
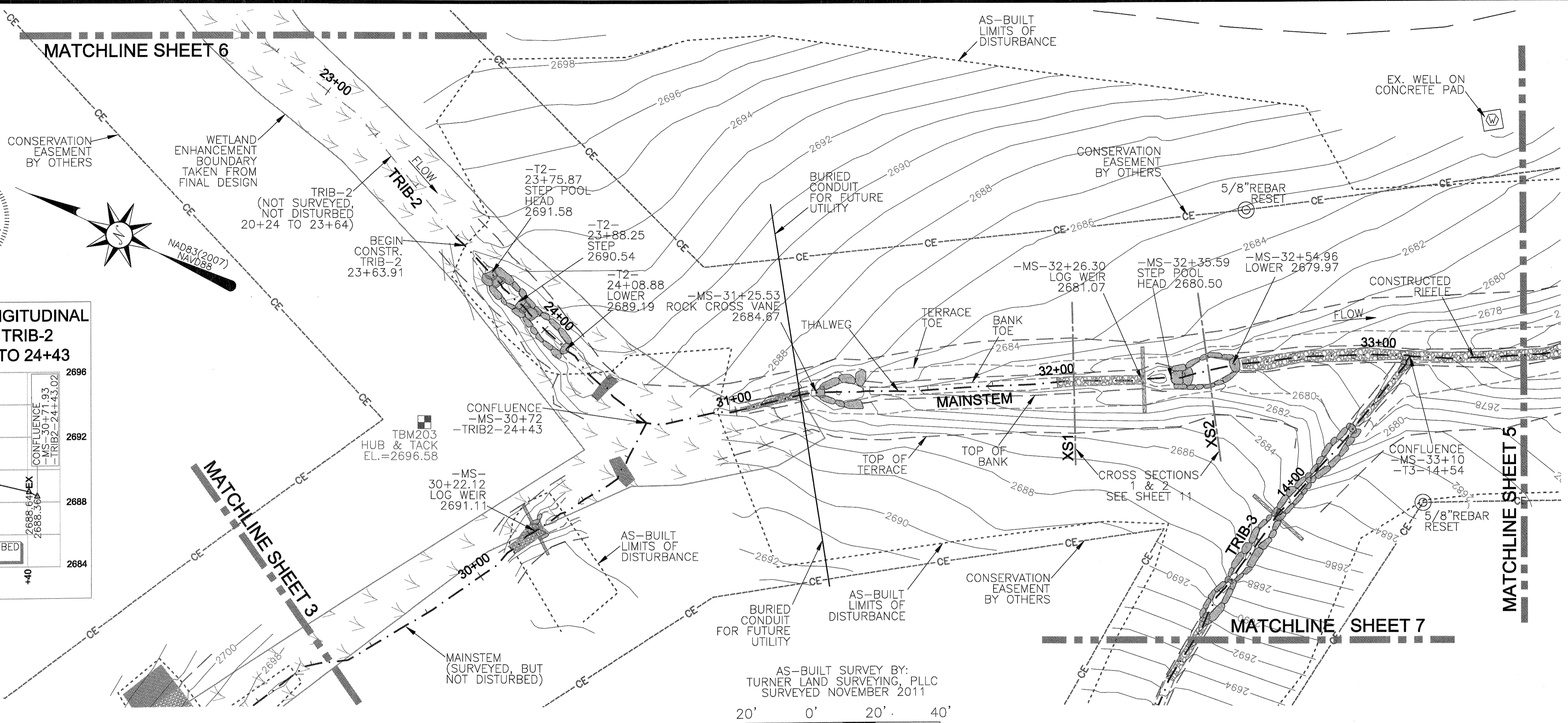
PLAN VIEW & PROFILE
AS-BUILT SURVEY OF
UT TO BALD CREEK STREAM RESTORATION
 SCO# 07-0714901

YANCEY COUNTY
 NORTH CAROLINA

DATE:	12/01/2011
SURVEYED BY:	DST/EGT
DRAWN BY:	DST/EGT
REVIEWED BY:	DST/EGT
PROJECT:	TLS-11-018
FILE:	UT TO BALD CREEK_92596_AB_F
SCALE:	AS SHOWN
SHEET	3

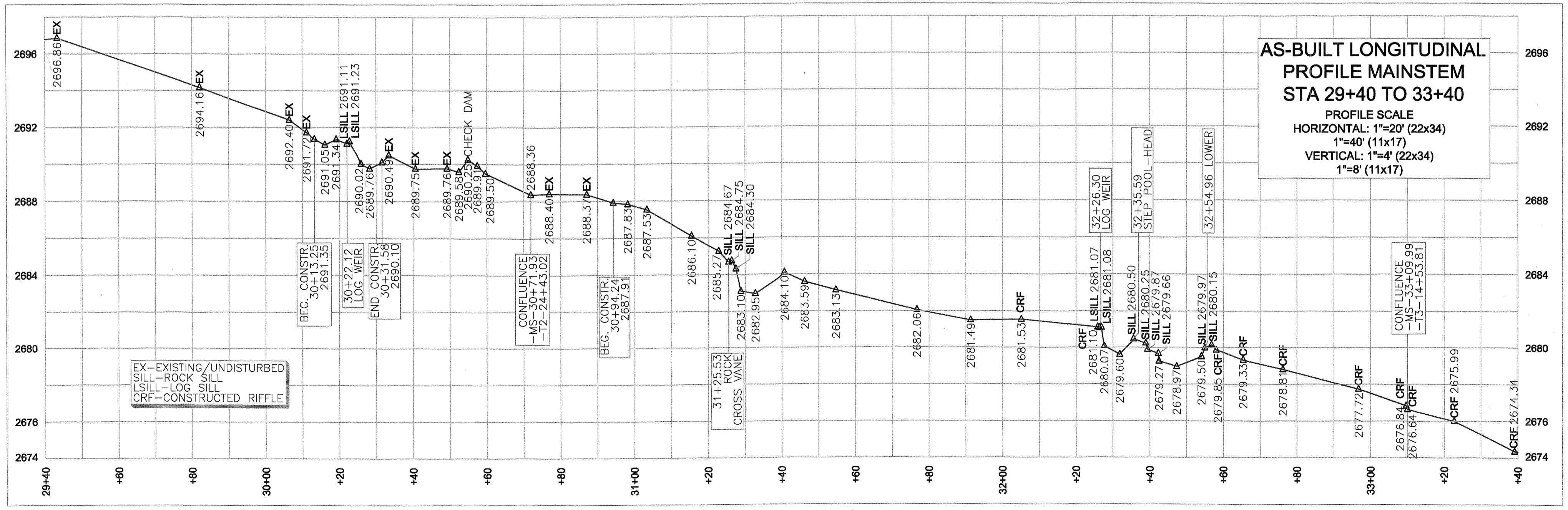
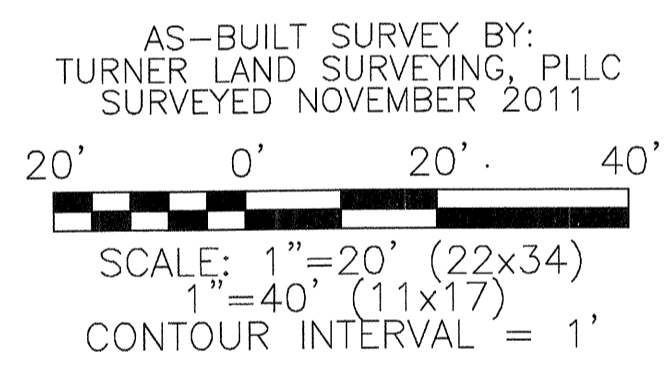
I, ELISABETH G. TURNER, AS A DULY REGISTERED PROFESSIONAL LAND SURVEYOR IN THE STATE OF NORTH CAROLINA, HEREBY CERTIFY THAT THE DATA SHOWN ON THIS DRAWING, WAS OBTAINED UNDER MY SUPERVISION, IS AN ACCURATE AND COMPLETE REPRESENTATION OF WHAT WAS CONSTRUCTED IN THE FIELD, AND THAT THE PHYSICAL DIMENSIONS OR ELEVATIONS SHOWN THUS ARE AS-BUILT CONDITIONS EXCEPT WHERE OTHERWISE NOTED HEREON. WITNESS MY ORIGINAL SIGNATURE, REGISTRATION NUMBER, AND SEAL THIS 1st DAY OF MARCH, 2012.

Elisabeth G. Turner
 ELISABETH G. TURNER, P.L.S. #L-4440
 NORTH CAROLINA PROFESSIONAL LAND SURVEYOR
 SEAL L-4440
 ELISABETH G. TURNER



- LEGEND:**
- THALWEG
 - TOP OF BANK
 - TOE OF BANK
 - CE --- CONSERVATION EASEMENT
 - PROPERTY LINE (NOT SURVEYED)
 - LIMITS OF DISTURBANCE
 - LOG SILL
 - STEP POOL (SIZE VARIES)
 - ROCK CROSS VANE
 - LOG CROSS VANE
 - CONSTRUCTED RIFFLE
 - WETLAND ENHANCEMENT (TAKEN FROM FINAL DESIGN)
 - CONTROL POINT/BENCHMARK
 - RESET EASEMENT CORNER

- GENERAL NOTES**
1. ALL DISTANCES ARE HORIZONTAL UNLESS OTHERWISE NOTED.
 2. THE VERTICAL DATUM IS NAVD88.
 3. THE BASIS OF BEARINGS IS NCGS STATE PLANE GRID COORDINATES NAD83 (NSRS 2007) DATUM.
 4. CONTROL SET USING RTK GPS METHODS AND THE NCGS CORS NETWORK. CONTROL ESTABLISHED THROUGH AVERAGED 180 EPOCH RTK OBSERVATIONS. CONTROL VERIFIED AND TIED TO CONTROL DATA PROVIDED BY DESIGNER.
 5. THIS MAP IS NOT FOR RECORDATION, SALES, OR CONVEYANCES AND DOES NOT COMPLY WITH G.S. 47-30 MAPPING REQUIREMENTS.
 6. THE LONGITUDINAL STATIONING SHOWN ON THE PLAN VIEW AND LONGITUDINAL PROFILE IS THE AS-BUILT SURVEY LENGTH WHICH MAY VARY FROM THE FINAL DESIGN LENGTH.
 7. INFORMATION SHOWN OUTSIDE THE AS-BUILT LIMITS OF DISTURBANCE WAS TAKEN FROM EXISTING CONDITIONS AND DESIGN DATA PROVIDED BY THE DESIGNER.
 8. CONSERVATION EASEMENT, PROPERTY LINES, AND WETLANDS PROVIDED BY DESIGNER.



REVISIONS, DATE AND INITIAL:
 REVISED: 02/29/12 ADDED SHEET 11 - CROSS SECTIONS, EGT

TURNER LAND SURVEYING, PLLC
 3201 Glenridge Drive, Raleigh, NC 27604 - (919)875-1378
 P-0702 - Turner@tlns.net - Dturner11@att.net
 WWW.TURNERLANDSURVEYING.COM

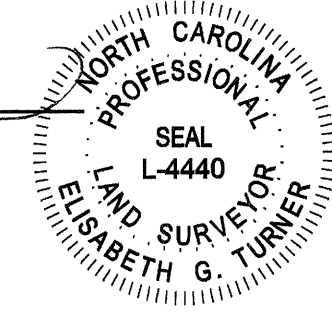
PLAN VIEW & PROFILE
 AS-BUILT SURVEY OF
 UT TO BALD CREEK STREAM RESTORATION
 SCO# 07-0714901

DATE: 12/01/2011
 SURVEYED BY: DST/EGT
 DRAWN BY: DST/EGT
 REVIEWED BY: DST/EGT
 PROJECT: TLS-11-018
 FILE: UT TO BALD CREEK_92596_AB_F
 SCALE: AS SHOWN

SHEET 4

I, ELISABETH G. TURNER, AS A DULY REGISTERED PROFESSIONAL LAND SURVEYOR IN THE STATE OF NORTH CAROLINA, HEREBY CERTIFY THAT THE DATA SHOWN ON THIS DRAWING, WAS OBTAINED UNDER MY SUPERVISION, IS AN ACCURATE AND COMPLETE REPRESENTATION OF WHAT WAS CONSTRUCTED IN THE FIELD, AND THAT THE PHYSICAL DIMENSIONS OR ELEVATIONS SHOWN THUS ARE AS-BUILT CONDITIONS EXCEPT WHERE OTHERWISE NOTED HEREON. WITNESS MY ORIGINAL SIGNATURE, REGISTRATION NUMBER, AND SEAL THIS 1st DAY OF MARCH, 2012.

Elisabeth G. Turner
ELISABETH G. TURNER, P.L.S. #L-4440

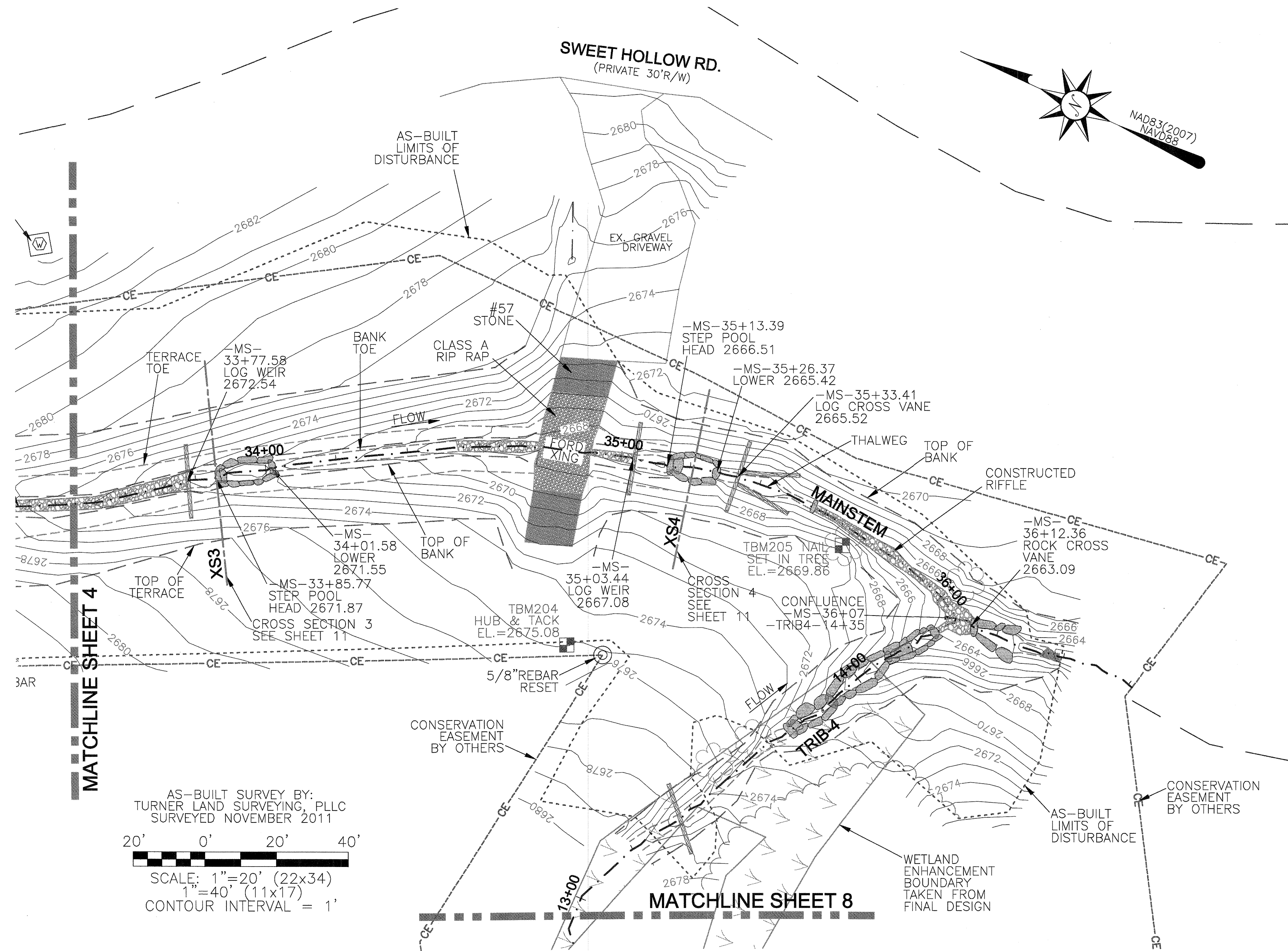


LEGEND:

	THALWEG
	TOP OF BANK
	TOE OF BANK
	CONSERVATION EASEMENT
	PROPERTY LINE (NOT SURVEYED)
	LIMITS OF DISTURBANCE
	LOG SILL
	STEP POOL (SIZE VARIES)
	ROCK CROSS VANE
	LOG CROSS VANE
	CONSTRUCTED RIFFLE
	WETLAND ENHANCEMENT (TAKEN FROM FINAL DESIGN)
	CONTROL POINT/BENCHMARK
	RESET EASEMENT CORNER

GENERAL NOTES

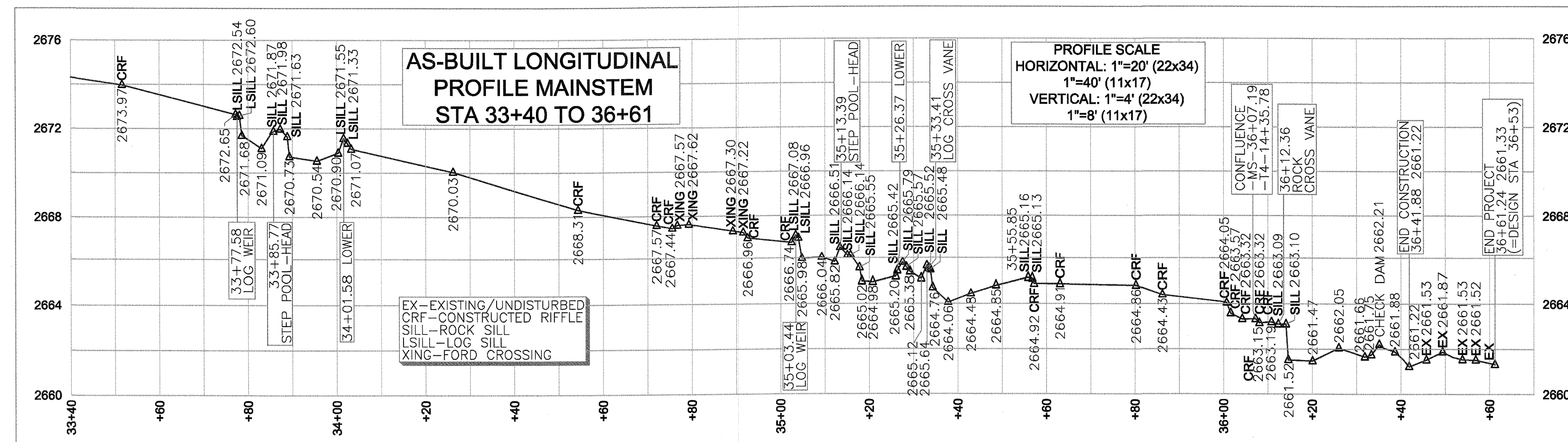
1. ALL DISTANCES ARE HORIZONTAL UNLESS OTHERWISE NOTED.
2. THE VERTICAL DATUM IS NAVD88.
3. THE BASIS OF BEARINGS IS NCGS STATE PLANE GRID COORDINATES NAD83 (NSRS 2007) DATUM.
4. CONTROL SET USING RTK GPS METHODS AND THE NCGS CORS NETWORK. CONTROL ESTABLISHED THROUGH AVERAGED 180 EPOCH RTK OBSERVATIONS. CONTROL VERIFIED AND TIED TO CONTROL DATA PROVIDED BY DESIGNER.
5. THIS MAP IS NOT FOR RECORDATION, SALES, OR CONVEYANCES AND DOES NOT COMPLY WITH G.S. 47-30 MAPPING REQUIREMENTS.
6. THE LONGITUDINAL STATIONING SHOWN ON THE PLAN VIEW AND LONGITUDINAL PROFILE IS THE AS-BUILT SURVEY LENGTH WHICH MAY VARY FROM THE FINAL DESIGN LENGTH.
7. INFORMATION SHOWN OUTSIDE THE AS-BUILT LIMITS OF DISTURBANCE WAS TAKEN FROM EXISTING CONDITIONS AND DESIGN DATA PROVIDED BY THE DESIGNER.
8. CONSERVATION EASEMENT, PROPERTY LINES, AND WETLANDS PROVIDED BY DESIGNER.



AS-BUILT SURVEY BY:
TURNER LAND SURVEYING, PLLC
SURVEYED NOVEMBER 2011

20' 0' 20' 40'

SCALE: 1"=20' (22x34)
1"=40' (11x17)
CONTOUR INTERVAL = 1'



REVISIONS, DATE AND INITIAL:
REVISED: 02/29/12 ADDED SHEET 11 - CROSS SECTIONS, EGT

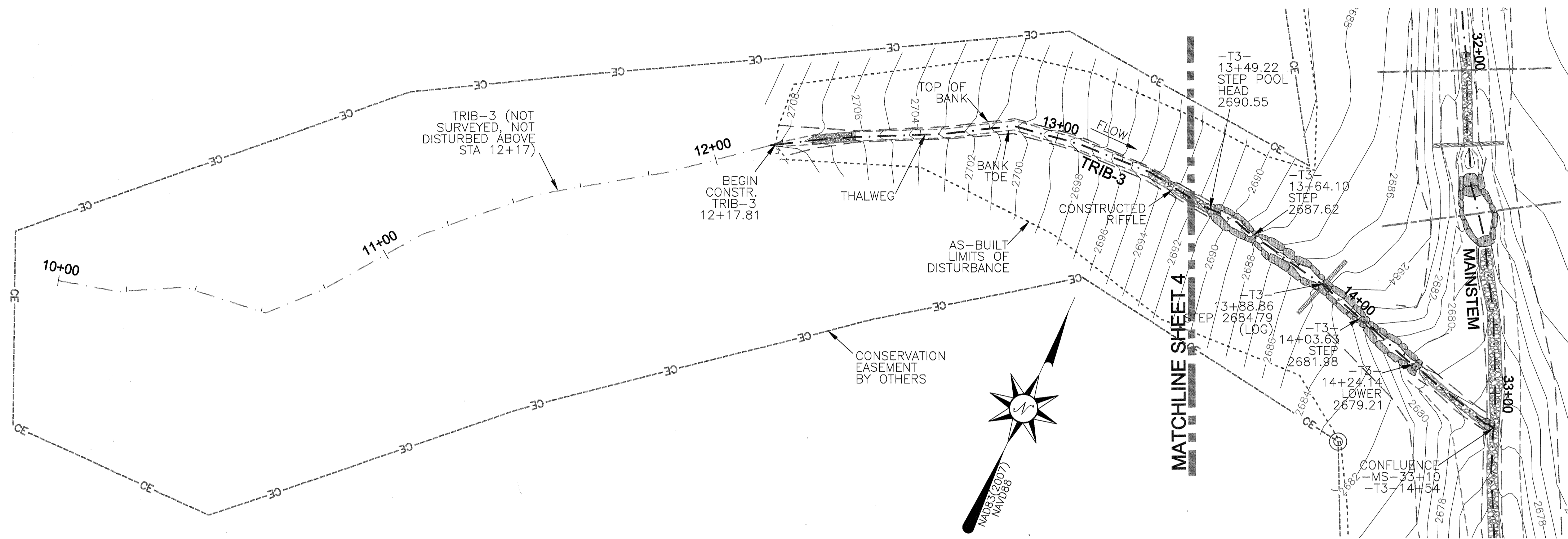
TURNER LAND SURVEYING, PLLC
3201 Glenridge Drive, Raleigh, NC 27604 - (919)875-1378
P-0702 - Turner921@att.net - Dturner119@att.net
WWW.TURNERLANDSURVEYING.COM

PLAN VIEW & PROFILE
AS-BUILT SURVEY OF
UT TO BALD CREEK STREAM RESTORATION
SCO# 07-0714901

NORTH CAROLINA
YANCEY COUNTY

DATE: 12/01/2011
SURVEYED BY: DST/EGT
DRAWN BY: DST/EGT
REVIEWED BY: DST/EGT
PROJECT: TLS-11-018
FILE: UT TO BALD CREEK_9596_AB_F
SCALE: AS SHOWN

SHEET **5**



LEGEND:

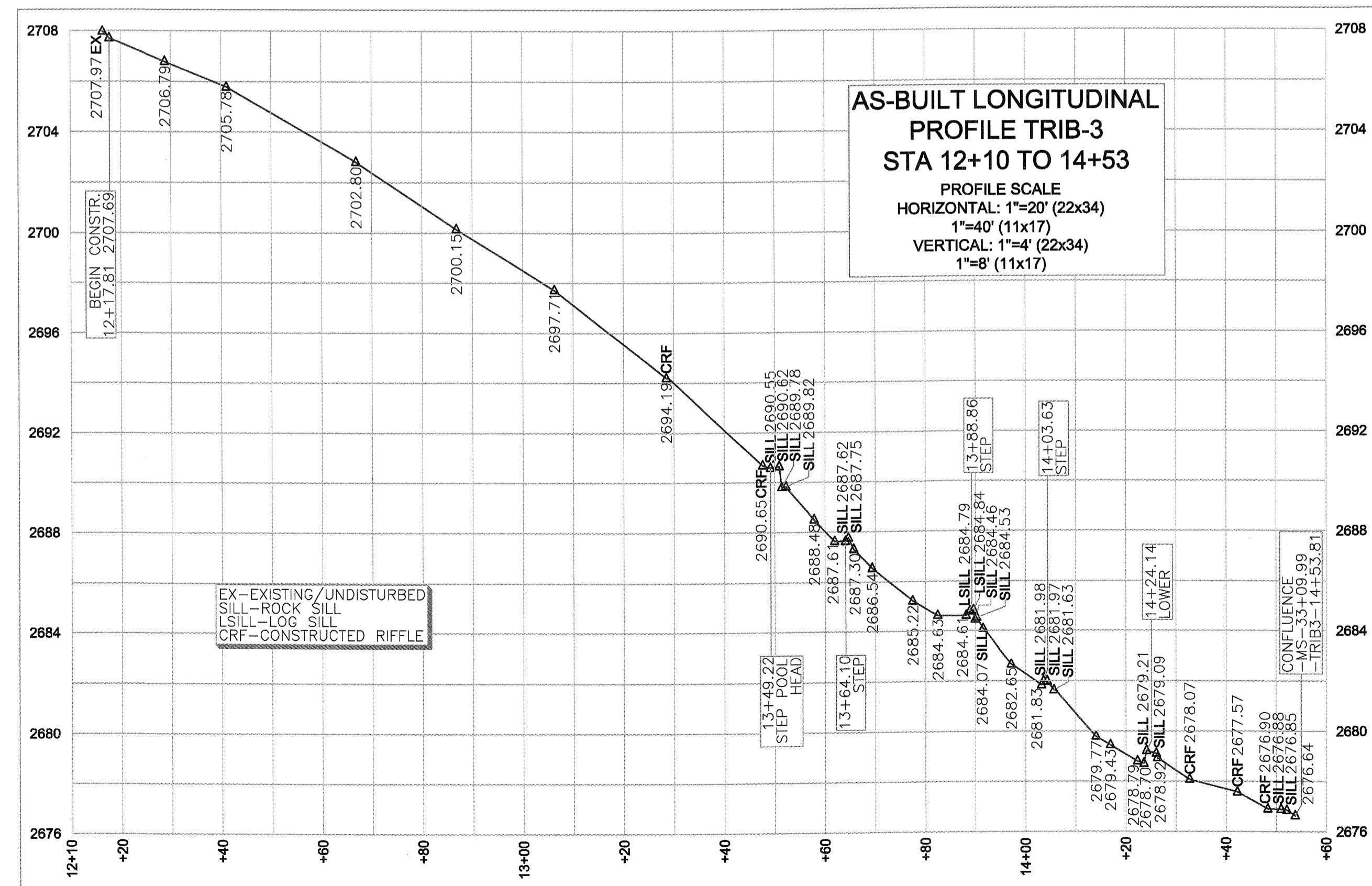
- THALWEG
- TOP OF BANK
- TOE OF BANK
- CE --- CONSERVATION EASEMENT
- PROPERTY LINE (NOT SURVEYED)
- LIMITS OF DISTURBANCE
- LOG SILL
- STEP POOL (SIZE VARIES)
- ROCK CROSS VANE
- LOG CROSS VANE
- CONSTRUCTED RIFFLE
- WETLAND ENHANCEMENT (TAKEN FROM FINAL DESIGN)
- CONTROL POINT/BENCHMARK
- RESET EASEMENT CORNER

AS-BUILT SURVEY BY:
TURNER LAND SURVEYING, PLLC
SURVEYED NOVEMBER 2011

SCALE: 1"=20' (22x34)
1"=40' (11x17)
CONTOUR INTERVAL = 1'

I, ELISABETH G. TURNER, AS A DULY REGISTERED PROFESSIONAL LAND SURVEYOR IN THE STATE OF NORTH CAROLINA, HEREBY CERTIFY THAT THE DATA SHOWN ON THIS DRAWING, WAS OBTAINED UNDER MY SUPERVISION, IS AN ACCURATE AND COMPLETE REPRESENTATION OF WHAT WAS CONSTRUCTED IN THE FIELD, AND THAT THE PHYSICAL DIMENSIONS OR ELEVATIONS SHOWN THUS ARE AS-BUILT CONDITIONS EXCEPT WHERE OTHERWISE NOTED HEREON. WITNESS MY ORIGINAL SIGNATURE, REGISTRATION NUMBER, AND SEAL THIS 1st DAY OF MARCH, 2012.

Elisabeth G. Turner
ELISABETH G. TURNER, P.L.S. #L-4440



- GENERAL NOTES**
1. ALL DISTANCES ARE HORIZONTAL UNLESS OTHERWISE NOTED.
 2. THE VERTICAL DATUM IS NAVD88.
 3. THE BASIS OF BEARINGS IS NCGS STATE PLANE GRID COORDINATES NAD83 (NSRS 2007) DATUM.
 4. CONTROL SET USING RTK GPS METHODS AND THE NCGS CORS NETWORK. CONTROL ESTABLISHED THROUGH AVERAGED 180 EPOCH RTK OBSERVATIONS. CONTROL VERIFIED AND TIED TO CONTROL DATA PROVIDED BY DESIGNER.
 5. THIS MAP IS NOT FOR RECORDATION, SALES, OR CONVEYANCES AND DOES NOT COMPLY WITH G.S. 47-30 MAPPING REQUIREMENTS.
 6. THE LONGITUDINAL STATIONING SHOWN ON THE PLAN VIEW AND LONGITUDINAL PROFILE IS THE AS-BUILT SURVEY LENGTH WHICH MAY VARY FROM THE FINAL DESIGN LENGTH.
 7. INFORMATION SHOWN OUTSIDE THE AS-BUILT LIMITS OF DISTURBANCE WAS TAKEN FROM EXISTING CONDITIONS AND DESIGN DATA PROVIDED BY THE DESIGNER.
 8. CONSERVATION EASEMENT, PROPERTY LINES, AND WETLANDS PROVIDED BY DESIGNER.

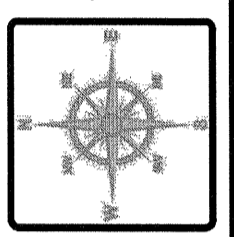
PLAN VIEW & PROFILE
AS-BUILT SURVEY OF
UT TO BALD CREEK STREAM RESTORATION
SCO# 07-0714901

DATE:	12/01/2011
SURVEYED BY:	DST/EGT
DRAWN BY:	DST/EGT
REVIEWED BY:	DST/EGT
PROJECT:	TLS-11-018
FILE:	UT TO BALD CREEK_92596_AB_F
SCALE:	AS SHOWN

SHEET
7

REVISIONS, DATE AND INITIAL:
REVISED: 02/29/12 ADDED SHEET 11 - CROSS SECTIONS, ECT

TURNER LAND SURVEYING, PLLC
3201 Glenridge Drive, Raleigh, NC 27604 - (919)875-1378
P-0702 -- Turner@t19.com -- Dturner@t19.com
WWW.TURNERLANDSURVEYING.COM



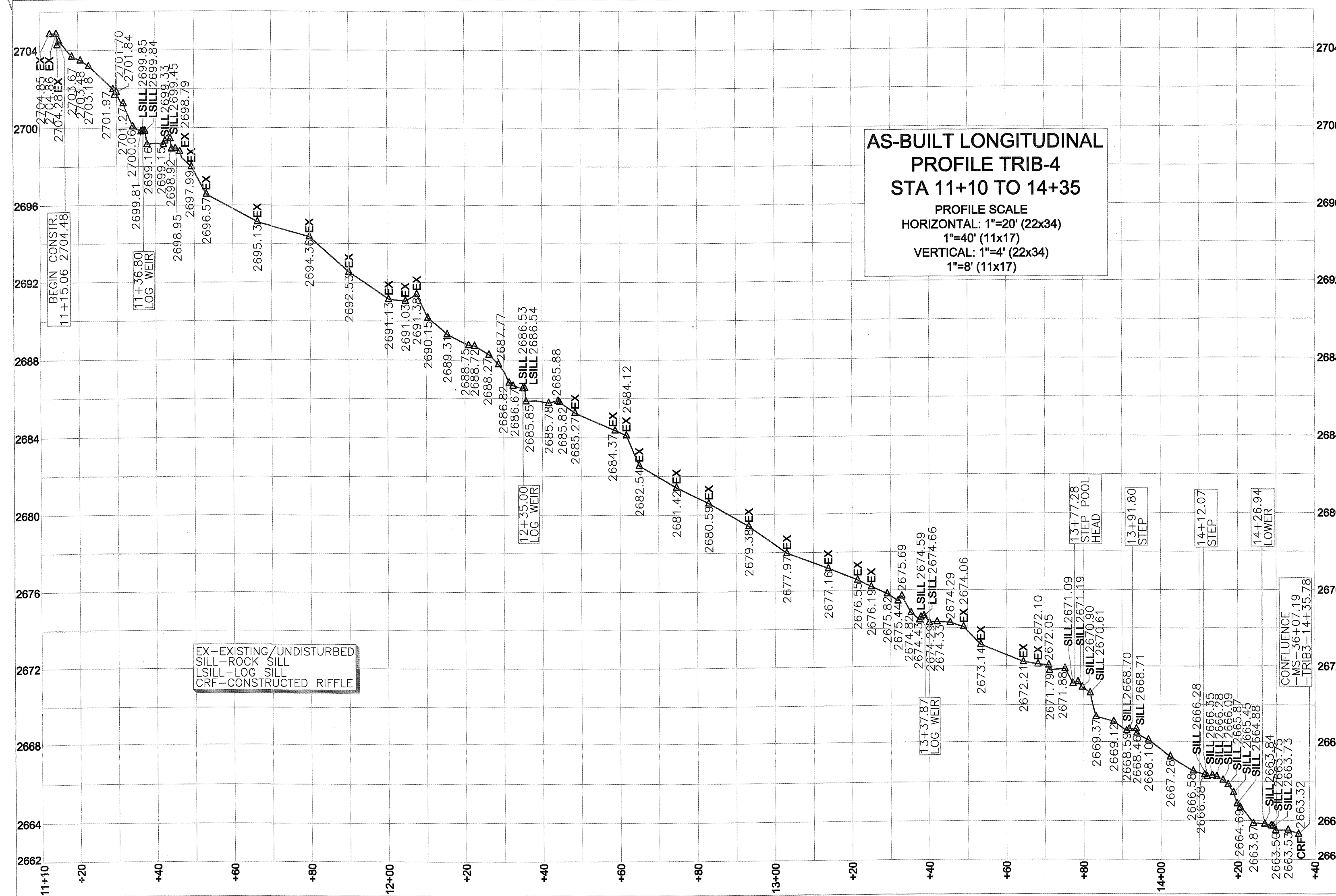
NORTH CAROLINA
YANCEY COUNTY

I, ELISABETH G. TURNER, AS A DULY REGISTERED PROFESSIONAL LAND SURVEYOR IN THE STATE OF NORTH CAROLINA, HEREBY CERTIFY THAT THE DATA SHOWN ON THIS DRAWING, WAS OBTAINED UNDER MY SUPERVISION, IS AN ACCURATE AND COMPLETE REPRESENTATION OF WHAT WAS CONSTRUCTED IN THE FIELD, AND THAT THE PHYSICAL DIMENSIONS OR ELEVATIONS SHOWN THUS ARE AS-BUILT CONDITIONS EXCEPT WHERE OTHERWISE NOTED HEREON. WITNESS MY ORIGINAL SIGNATURE, REGISTRATION NUMBER, AND SEAL THIS 1st DAY OF MARCH, 2012.

Elisabeth G. Turner
 ELISABETH G. TURNER, P.L.S. #L-4440
 NORTH CAROLINA PROFESSIONAL LAND SURVEYOR
 SEAL L-4440
 ELISABETH G. TURNER

GENERAL NOTES

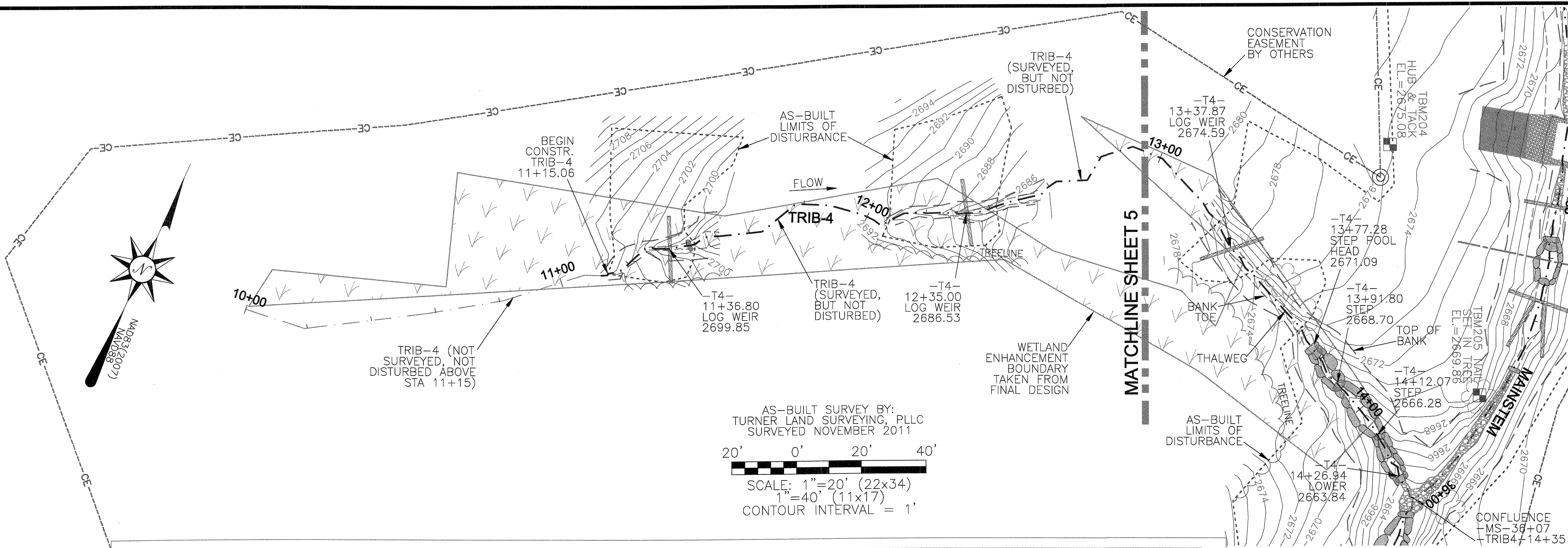
1. ALL DISTANCES ARE HORIZONTAL UNLESS OTHERWISE NOTED.
2. THE VERTICAL DATUM IS NAVD88.
3. THE BASIS OF BEARINGS IS NCGS STATE PLANE GRID COORDINATES NAD83 (NSRS 2007) DATUM.
4. CONTROL SET USING RTK GPS METHODS AND THE NCGS CORS NETWORK. CONTROL ESTABLISHED THROUGH AVERAGED 180 EPOCH RTK OBSERVATIONS. CONTROL VERIFIED AND TIED TO CONTROL DATA PROVIDED BY DESIGNER.
5. THIS MAP IS NOT FOR RECORDATION, SALES, OR CONVEYANCES AND DOES NOT COMPLY WITH G.S. 47-30 MAPPING REQUIREMENTS.
6. THE LONGITUDINAL STATIONING SHOWN ON THE PLAN VIEW AND LONGITUDINAL PROFILE IS THE AS-BUILT SURVEY LENGTH WHICH MAY VARY FROM THE FINAL DESIGN LENGTH.
7. INFORMATION SHOWN OUTSIDE THE AS-BUILT LIMITS OF DISTURBANCE WAS TAKEN FROM EXISTING CONDITIONS AND DESIGN DATA PROVIDED BY THE DESIGNER.
8. CONSERVATION EASEMENT, PROPERTY LINES, AND WETLANDS PROVIDED BY DESIGNER.



AS-BUILT LONGITUDINAL PROFILE TRIB-4 STA 11+10 TO 14+35
 PROFILE SCALE
 HORIZONTAL: 1"=20' (22x34)
 VERTICAL: 1"=4' (11x17)
 1"=8' (11x17)

LEGEND:

- THALWEG
- TOP OF BANK
- TOE OF BANK
- - - CE CONSERVATION EASEMENT
- PROPERTY LINE (NOT SURVEYED)
- LIMITS OF DISTURBANCE
- || LOG SILL
- ⊗ STEP POOL (SIZE VARIES)
- ⊏ ROCK CROSS VANE
- ⊏ LOG CROSS VANE
- ▨ CONSTRUCTED RIFFLE
- ▨ WETLAND ENHANCEMENT (TAKEN FROM FINAL DESIGN)
- ⊠ CONTROL POINT/BENCHMARK
- ⊙ RESET EASEMENT CORNER



REVISIONS, DATE AND INITIAL:
 REVISED: 02/29/12, ADDED SHEET 11 - CROSS SECTIONS, EGT

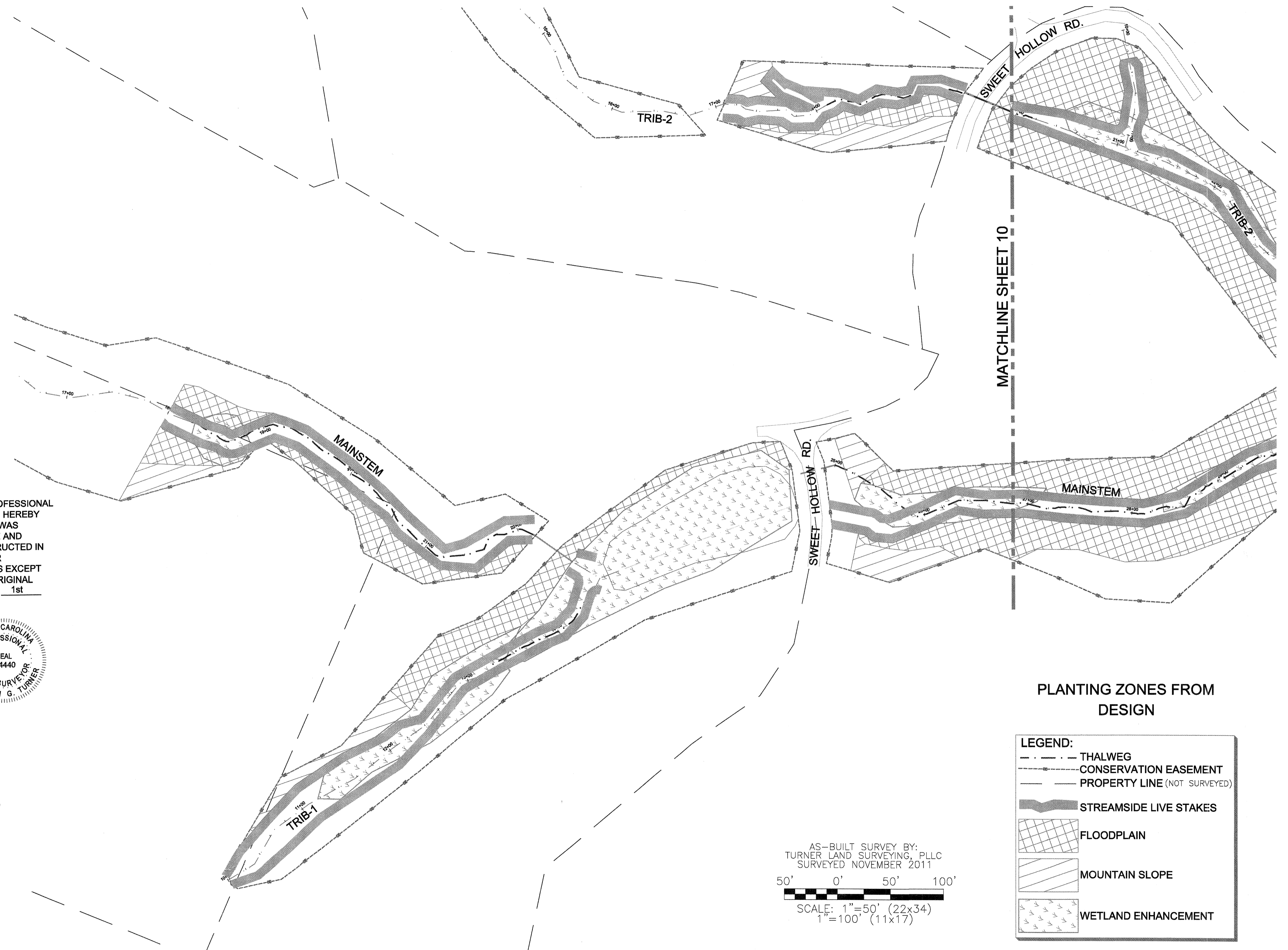
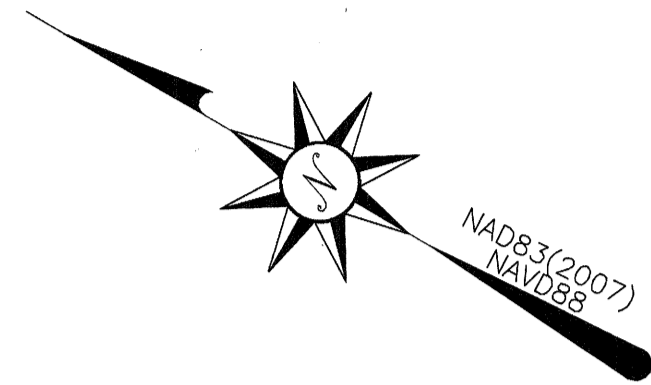
TURNER LAND SURVEYING, PLLC
 3201 Glenridge Drive, Raleigh, NC 27604 - (919)875-1378
 P-0702 - lummer921@att.net - dlurner119@att.net
 www.TURNERLANDSURVEYING.com

PLAN VIEW & PROFILE
 AS-BUILT SURVEY OF
UT TO BALD CREEK STREAM RESTORATION
 SCO# 07-0714901

NORTH CAROLINA
 YANCEY COUNTY

DATE: 12/01/2011
 SURVEYED BY: DST/EGT
 DRAWN BY: DST/EGT
 REVIEWED BY: DST/EGT
 PROJECT: TLS-11-018
 FILE: UT TO BALD CREEK_92596_AB_F
 SCALE: AS SHOWN

SHEET
8



I, ELISABETH G. TURNER, AS A DULY REGISTERED PROFESSIONAL LAND SURVEYOR IN THE STATE OF NORTH CAROLINA, HEREBY CERTIFY THAT THE DATA SHOWN ON THIS DRAWING, WAS OBTAINED UNDER MY SUPERVISION, IS AN ACCURATE AND COMPLETE REPRESENTATION OF WHAT WAS CONSTRUCTED IN THE FIELD, AND THAT THE PHYSICAL DIMENSIONS OR ELEVATIONS SHOWN THUS ARE AS-BUILT CONDITIONS EXCEPT WHERE OTHERWISE NOTED HEREON. WITNESS MY ORIGINAL SIGNATURE, REGISTRATION NUMBER, AND SEAL THIS 1st DAY OF MARCH, 2012.

Elisabeth G. Turner
 ELISABETH G. TURNER, P.L.S. #L-4440
 NORTH CAROLINA PROFESSIONAL LAND SURVEYOR SEAL L-4440 ELISABETH G. TURNER

- GENERAL NOTES**
1. ALL DISTANCES ARE HORIZONTAL UNLESS OTHERWISE NOTED.
 2. THE VERTICAL DATUM IS NAVD88.
 3. THE BASIS OF BEARINGS IS NCGS STATE PLANE GRID COORDINATES NAD83 (NSRS 2007) DATUM.
 4. CONTROL SET USING RTK GPS METHODS AND THE NCGS CORS NETWORK. CONTROL ESTABLISHED THROUGH AVERAGED 180 EPOCH RTK OBSERVATIONS. CONTROL VERIFIED AND TIED TO CONTROL DATA PROVIDED BY DESIGNER.
 5. THIS MAP IS NOT FOR RECORDATION, SALES, OR CONVEYANCES AND DOES NOT COMPLY WITH G.S. 47-30 MAPPING REQUIREMENTS.
 6. THE LONGITUDINAL STATIONING SHOWN ON THE PLAN VIEW AND LONGITUDINAL PROFILE IS THE AS-BUILT SURVEY LENGTH WHICH MAY VARY FROM THE FINAL DESIGN LENGTH.
 7. INFORMATION SHOWN OUTSIDE THE AS-BUILT LIMITS OF DISTURBANCE WAS TAKEN FROM EXISTING CONDITIONS AND DESIGN DATA PROVIDED BY THE DESIGNER.
 8. CONSERVATION EASEMENT, PROPERTY LINES, AND WETLANDS PROVIDED BY DESIGNER.

AS-BUILT SURVEY BY:
 TURNER LAND SURVEYING, PLLC
 SURVEYED NOVEMBER 2011
 50' 0' 50' 100'
 SCALE: 1"=50' (22x34)
 1"=100' (11x17)

PLANTING ZONES FROM DESIGN

LEGEND:

- THALWEG
- - - CONSERVATION EASEMENT
- PROPERTY LINE (NOT SURVEYED)
- █ STREAMSIDE LIVE STAKES
- ▨ FLOODPLAIN
- ▧ MOUNTAIN SLOPE
- ▩ WETLAND ENHANCEMENT

REVISIONS, DATE AND INITIAL:
 REVISED: 02/29/12 ADDED SHEET 11 - CROSS SECTIONS, EGT

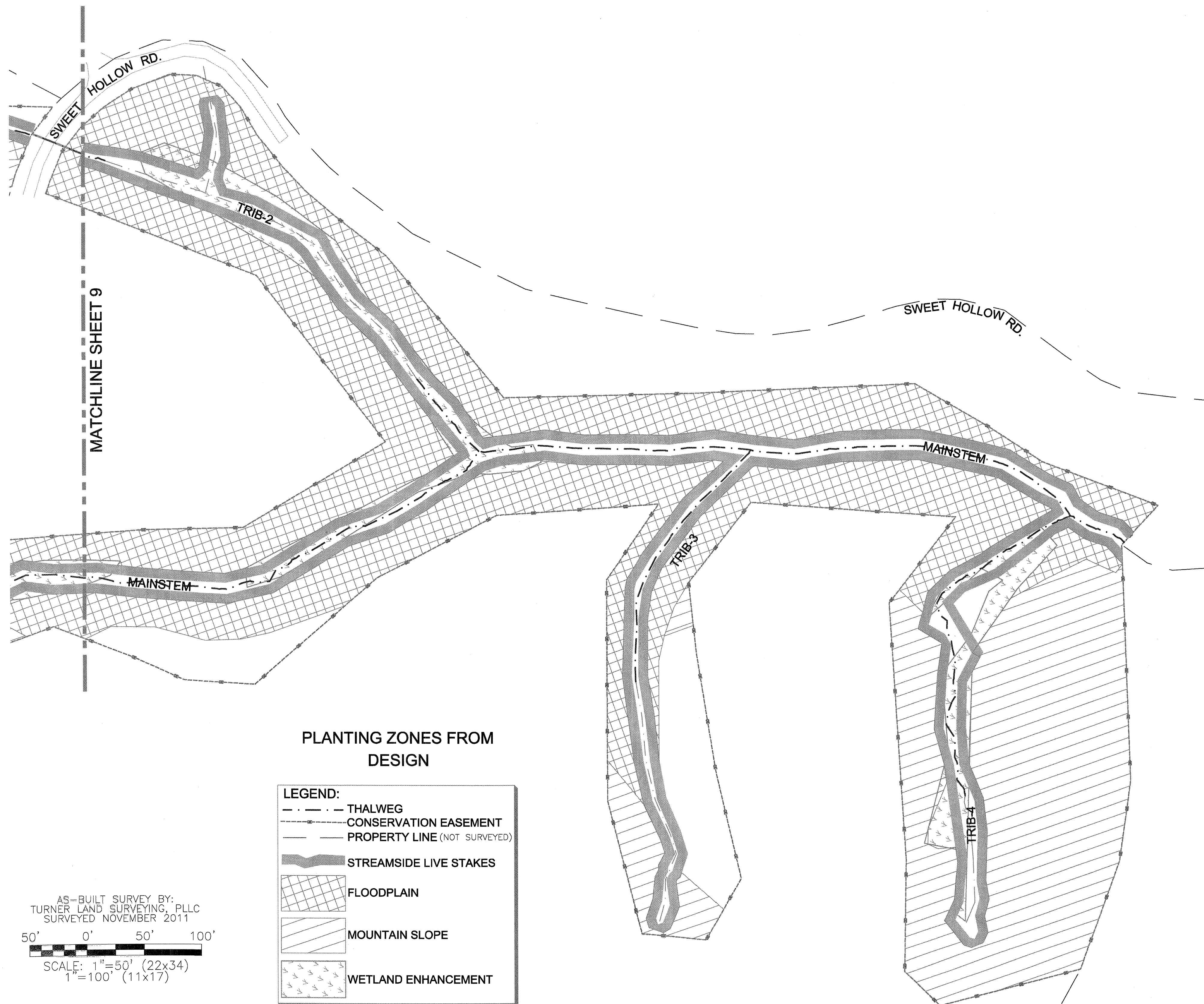
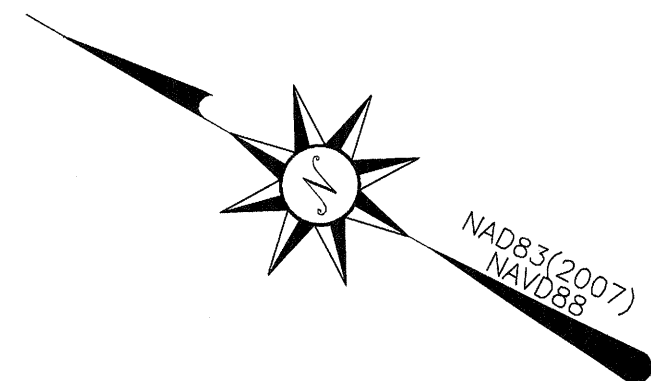
TURNER LAND SURVEYING, PLLC
 3201 Glenridge Drive, Raleigh, NC 27604 -- (919)875-1378
 P-0702 -- Lturner@atl.net -- Dturner1@atl.net
 www.TURNERLANDSURVEYING.com

PLANTING PLAN
 AS-BUILT SURVEY OF
 UT TO BALD CREEK STREAM RESTORATION
 SCO# 07-0714901

YANCEY COUNTY
 NORTH CAROLINA

DATE: 12/01/2011
 SURVEYED BY: DST/EGT
 DRAWN BY: DST/EGT
 REVIEWED BY: DST/EGT
 PROJECT: TLS-11-018
 FILE: UT TO BALD CREEK _92596_AB_F
 SCALE: AS SHOWN

SHEET
9



I, ELISABETH G. TURNER, AS A DULY REGISTERED PROFESSIONAL LAND SURVEYOR IN THE STATE OF NORTH CAROLINA, HEREBY CERTIFY THAT THE DATA SHOWN ON THIS DRAWING, WAS OBTAINED UNDER MY SUPERVISION, IS AN ACCURATE AND COMPLETE REPRESENTATION OF WHAT WAS CONSTRUCTED IN THE FIELD, AND THAT THE PHYSICAL DIMENSIONS OR ELEVATIONS SHOWN THUS ARE AS-BUILT CONDITIONS EXCEPT WHERE OTHERWISE NOTED HEREON. WITNESS MY ORIGINAL SIGNATURE, REGISTRATION NUMBER, AND SEAL THIS 1st DAY OF MARCH, 2012.

Elisabeth G. Turner
 ELISABETH G. TURNER, P.L.S. #L-4440
 NORTH CAROLINA PROFESSIONAL LAND SURVEYOR SEAL L-4440 ELISABETH G. TURNER

GENERAL NOTES

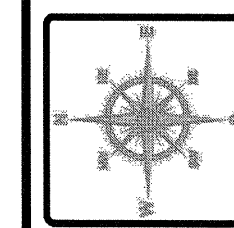
1. ALL DISTANCES ARE HORIZONTAL UNLESS OTHERWISE NOTED.
2. THE VERTICAL DATUM IS NAVD88.
3. THE BASIS OF BEARINGS IS NCGS STATE PLANE GRID COORDINATES NAD83 (NSRS 2007) DATUM.
4. CONTROL SET USING RTK GPS METHODS AND THE NCGS CORS NETWORK. CONTROL ESTABLISHED THROUGH AVERAGED 180 EPOCH RTK OBSERVATIONS. CONTROL VERIFIED AND TIED TO CONTROL DATA PROVIDED BY DESIGNER.
5. THIS MAP IS NOT FOR RECORDATION, SALES, OR CONVEYANCES AND DOES NOT COMPLY WITH G.S. 47-30 MAPPING REQUIREMENTS.
6. THE LONGITUDINAL STATIONING SHOWN ON THE PLAN VIEW AND LONGITUDINAL PROFILE IS THE AS-BUILT SURVEY LENGTH WHICH MAY VARY FROM THE FINAL DESIGN LENGTH.
7. INFORMATION SHOWN OUTSIDE THE AS-BUILT LIMITS OF DISTURBANCE WAS TAKEN FROM EXISTING CONDITIONS AND DESIGN DATA PROVIDED BY THE DESIGNER.
8. CONSERVATION EASEMENT, PROPERTY LINES, AND WETLANDS PROVIDED BY DESIGNER.

AS-BUILT SURVEY BY:
 TURNER LAND SURVEYING, PLLC
 SURVEYED NOVEMBER 2011
 50' 0' 50' 100'
 SCALE: 1"=50' (22x34)
 1"=100' (11x17)

PLANTING ZONES FROM DESIGN

LEGEND:	
	THALWEG
	CONSERVATION EASEMENT
	PROPERTY LINE (NOT SURVEYED)
	STREAMSIDE LIVE STAKES
	FLOODPLAIN
	MOUNTAIN SLOPE
	WETLAND ENHANCEMENT

REVISIONS, DATE AND INITIAL:
 REVISED: 02/29/12 ADDED SHEET 11 - CROSS SECTIONS, EGT



TURNER LAND SURVEYING, PLLC
 3201 Glenridge Drive, Raleigh, NC 27604 -- (919)875-1378
 P-0702 -- Lturner21@att.net -- Dturner119@att.net
 www.TURNERLANDSURVEYING.com

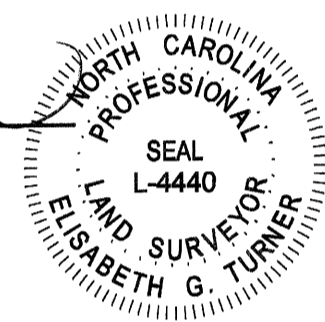
PLANTING PLAN
 AS-BUILT SURVEY OF
UT TO BALD CREEK STREAM RESTORATION
 SCO# 07-0714901
 YANCEY COUNTY
 NORTH CAROLINA

DATE: 12/01/2011
 SURVEYED BY: DST/EGT
 DRAWN BY: DST/EGT
 REVIEWED BY: DST/EGT
 PROJECT: TLS-11-018
 FILE: UT TO BALD CREEK_92596_AB_F
 SCALE: AS SHOWN

SHEET
10

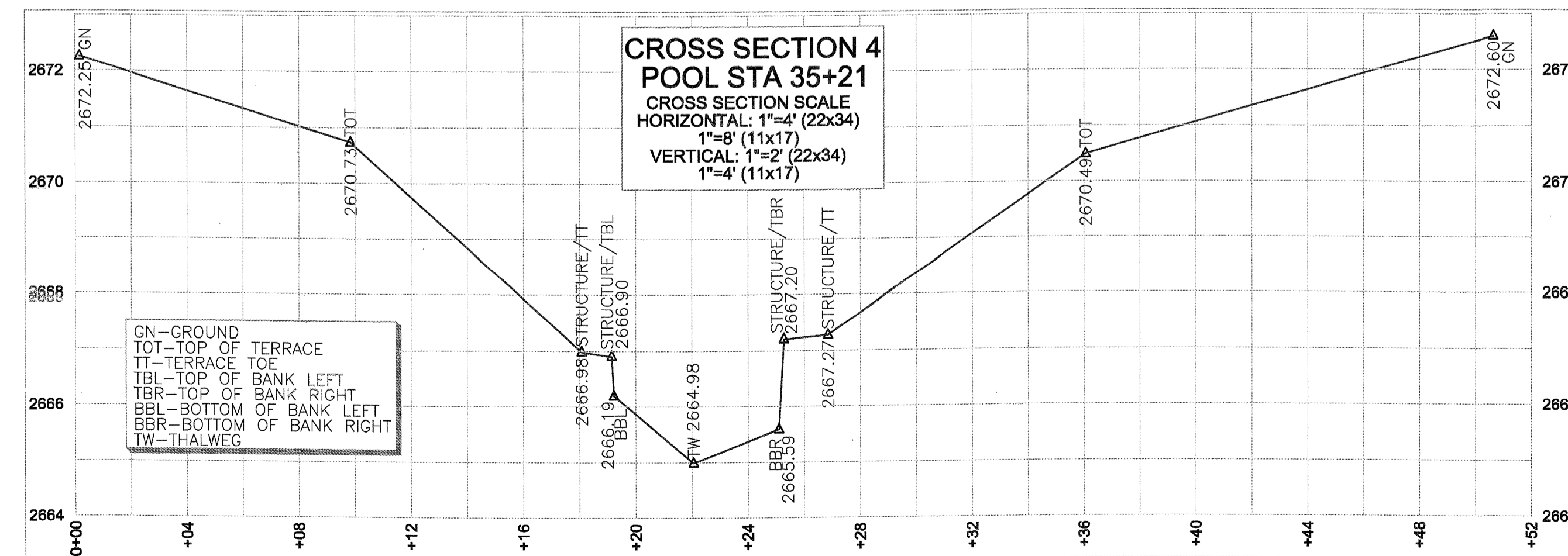
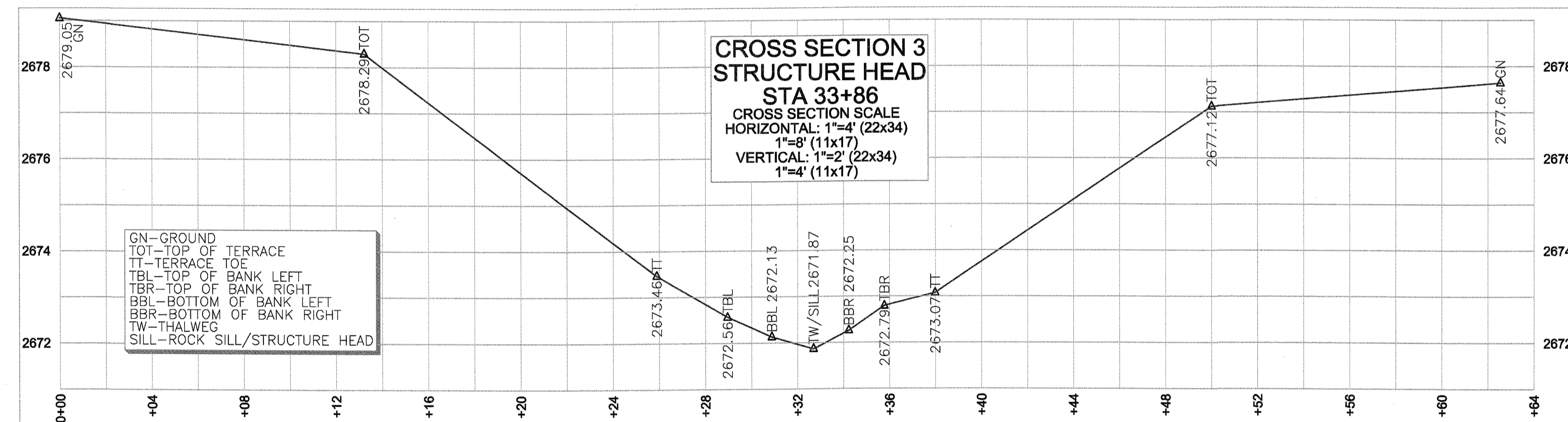
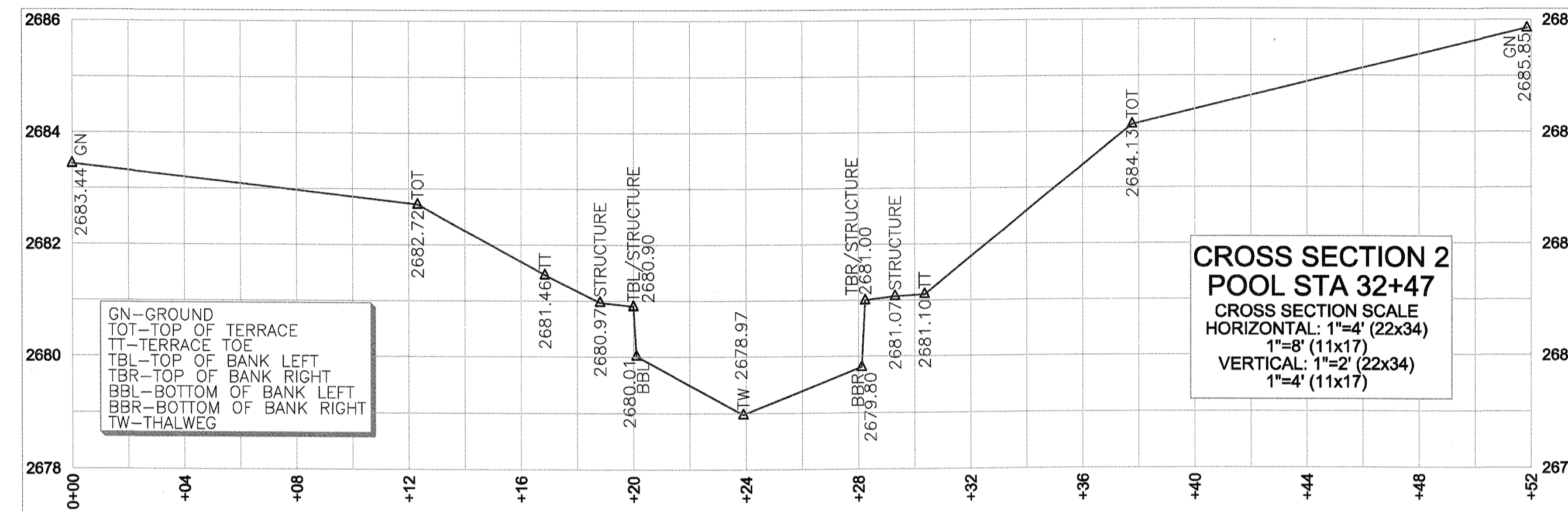
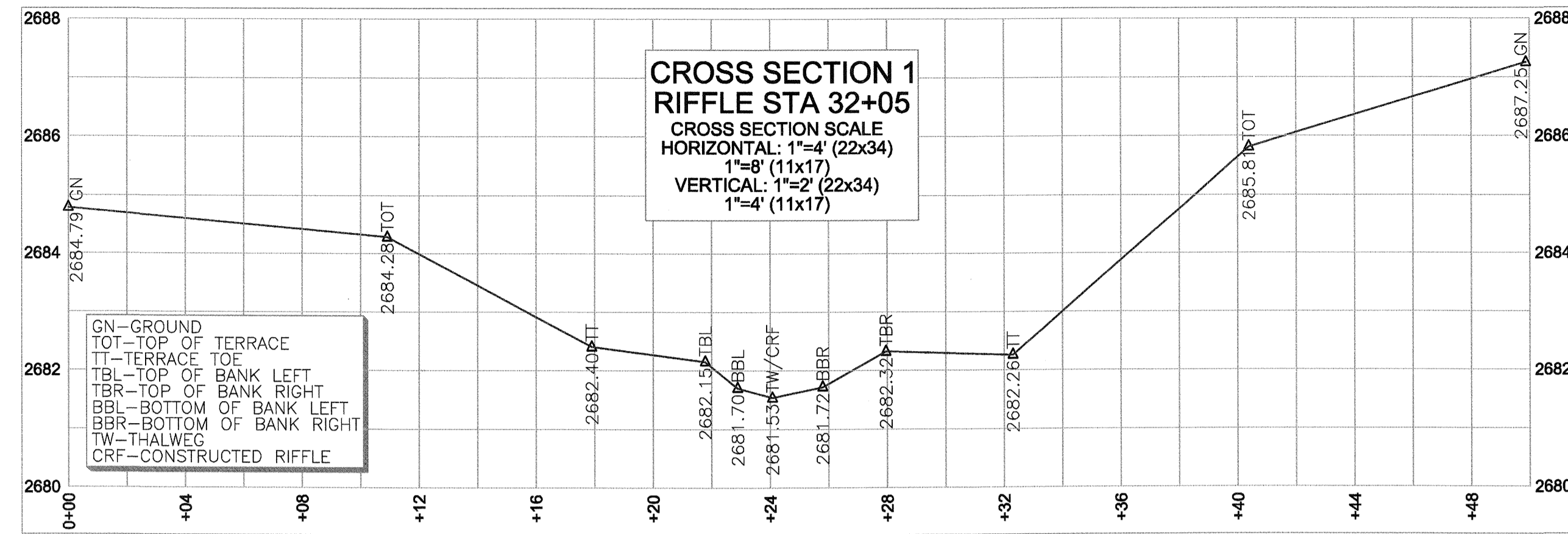
I, ELISABETH G. TURNER, AS A DULY REGISTERED PROFESSIONAL LAND SURVEYOR IN THE STATE OF NORTH CAROLINA, HEREBY CERTIFY THAT THE DATA SHOWN ON THIS DRAWING, WAS OBTAINED UNDER MY SUPERVISION, IS AN ACCURATE AND COMPLETE REPRESENTATION OF WHAT WAS CONSTRUCTED IN THE FIELD, AND THAT THE PHYSICAL DIMENSIONS OR ELEVATIONS SHOWN THUS ARE AS-BUILT CONDITIONS EXCEPT WHERE OTHERWISE NOTED HEREON. WITNESS MY ORIGINAL SIGNATURE, REGISTRATION NUMBER, AND SEAL THIS 1st DAY OF MARCH 2012.

Elisabeth G. Turner
 ELISABETH G. TURNER, P.L.S. #L-4440



GENERAL NOTES

1. ALL DISTANCES ARE HORIZONTAL UNLESS OTHERWISE NOTED.
2. THE VERTICAL DATUM IS NAVD88.
3. THE BASIS OF BEARINGS IS NCGS STATE PLANE GRID COORDINATES NAD83 (NSRS 2007) DATUM.
4. CONTROL SET USING RTK GPS METHODS AND THE NCGS CORS NETWORK. CONTROL ESTABLISHED THROUGH AVERAGED 180 EPOCH RTK OBSERVATIONS. CONTROL VERIFIED AND TIED TO CONTROL DATA PROVIDED BY DESIGNER.
5. THIS MAP IS NOT FOR RECORDATION, SALES, OR CONVEYANCES AND DOES NOT COMPLY WITH G.S. 47-30 MAPPING REQUIREMENTS.
6. THE LONGITUDINAL STATIONING SHOWN ON THE PLAN VIEW AND LONGITUDINAL PROFILE IS THE AS-BUILT SURVEY LENGTH WHICH MAY VARY FROM THE FINAL DESIGN LENGTH.
7. INFORMATION SHOWN OUTSIDE THE AS-BUILT LIMITS OF DISTURBANCE WAS TAKEN FROM EXISTING CONDITIONS AND DESIGN DATA PROVIDED BY THE DESIGNER.
8. CONSERVATION EASEMENT, PROPERTY LINES, AND WETLANDS PROVIDED BY DESIGNER.



CROSS SECTIONS 1-4
 SHOWN ON SHEETS 4 & 5

REVISIONS, DATE AND INITIAL:
 REVISED: 02/29/12 ADDED SHEET 11 - CROSS SECTIONS, ECT

CROSS SECTIONS
 AS-BUILT SURVEY OF
 UT TO BALD CREEK STREAM RESTORATION
 SCO# 07-0714901

TURNER LAND SURVEYING, PLLC
 3201 Glenridge Drive, Raleigh, NC 27604 -- (919)875-1378
 P-0702 - Lturner21@att.net - Dturner119@att.net
 WWW.TURNERLANDSURVEYING.COM

YANCEY COUNTY
 NORTH CAROLINA

DATE: 12/01/2011
 SURVEYED BY: DST/EGT
 DRAWN BY: DST/EGT
 REVIEWED BY: DST/EGT
 PROJECT: TLS-11-018
 FILE: UT TO BALD CREEK _92596_AB_F
 SCALE: AS SHOWN

SHEET
11