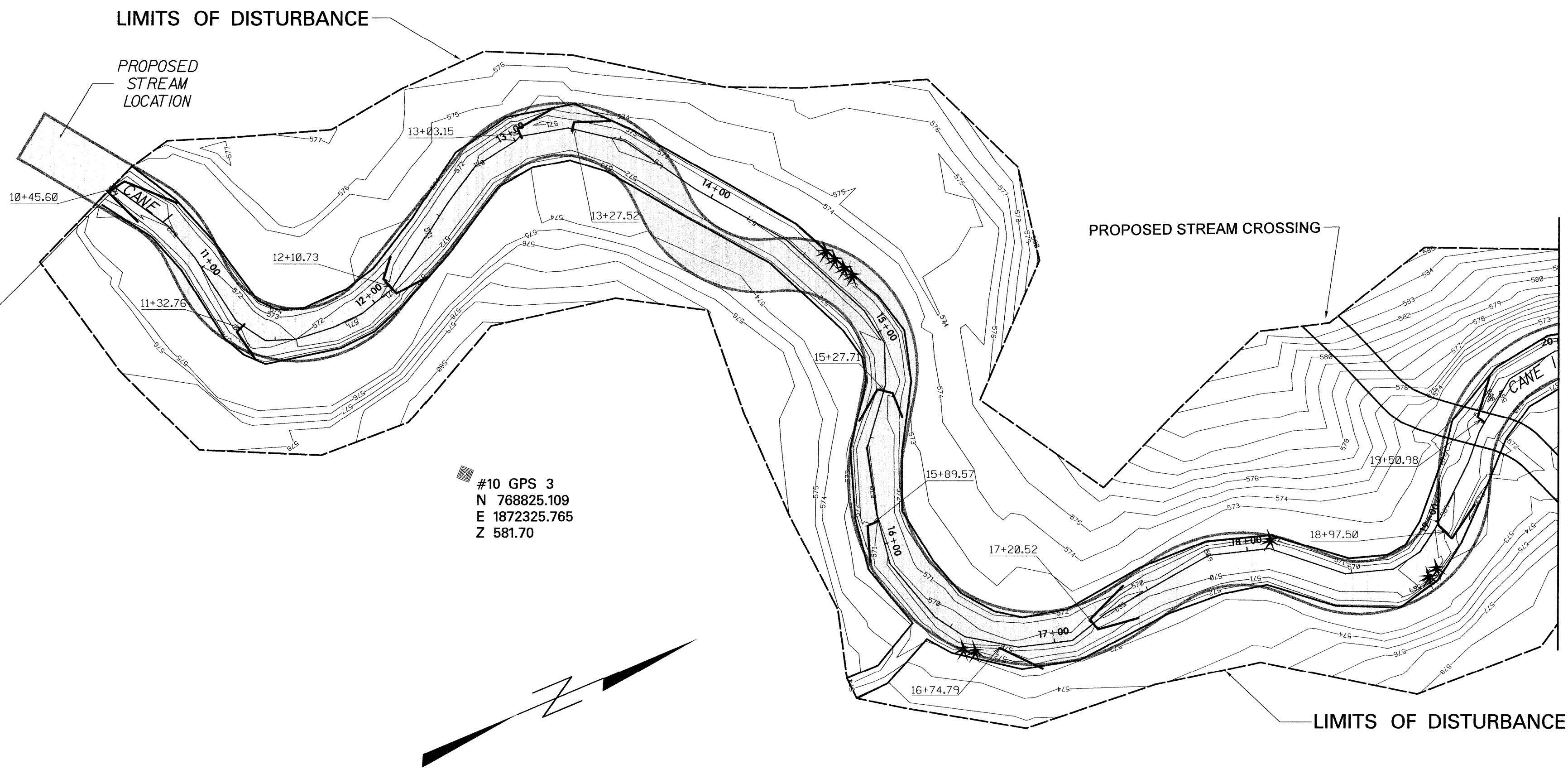


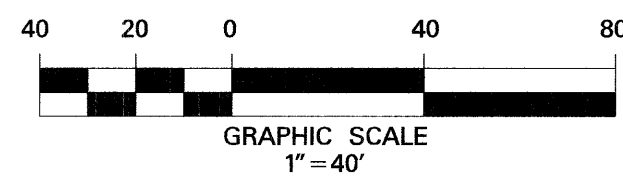
ALAMANCE COUNTY
VICINITY MAP
NOT TO SCALE



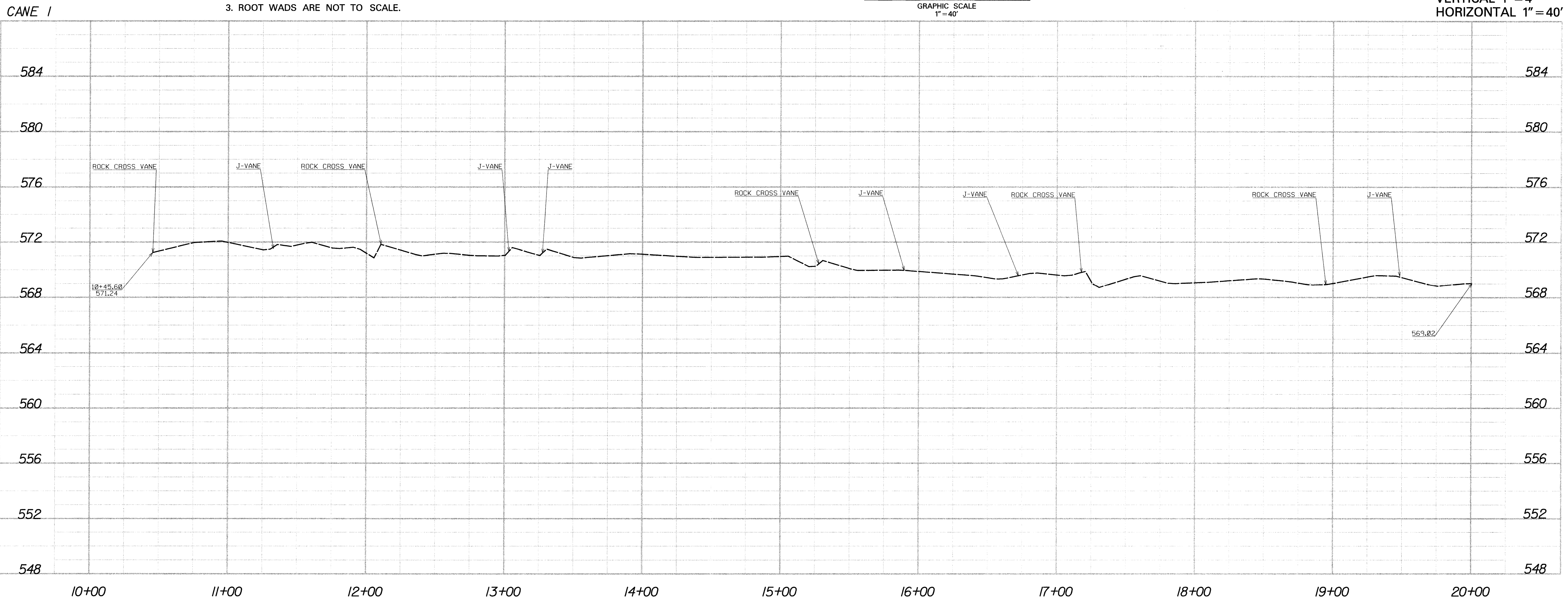
#11 GPS 4
N 768457.957
E 1872253.665
Z 593.28

#10 GPS 3
N 768825.109
E 1872325.765
Z 581.70

- NOTES:
1. GPS COORDINATES WERE PROVIDED BY STANTEC CONSULTING SERVICES, INC. PROJECT REFERENCE #CMCCPF/02.
 2. ROCK VANE STATIONS SHOWN ARE CENTERLINE AT HEAD OF STRUCTURE.
 3. ROOT WADS ARE NOT TO SCALE.



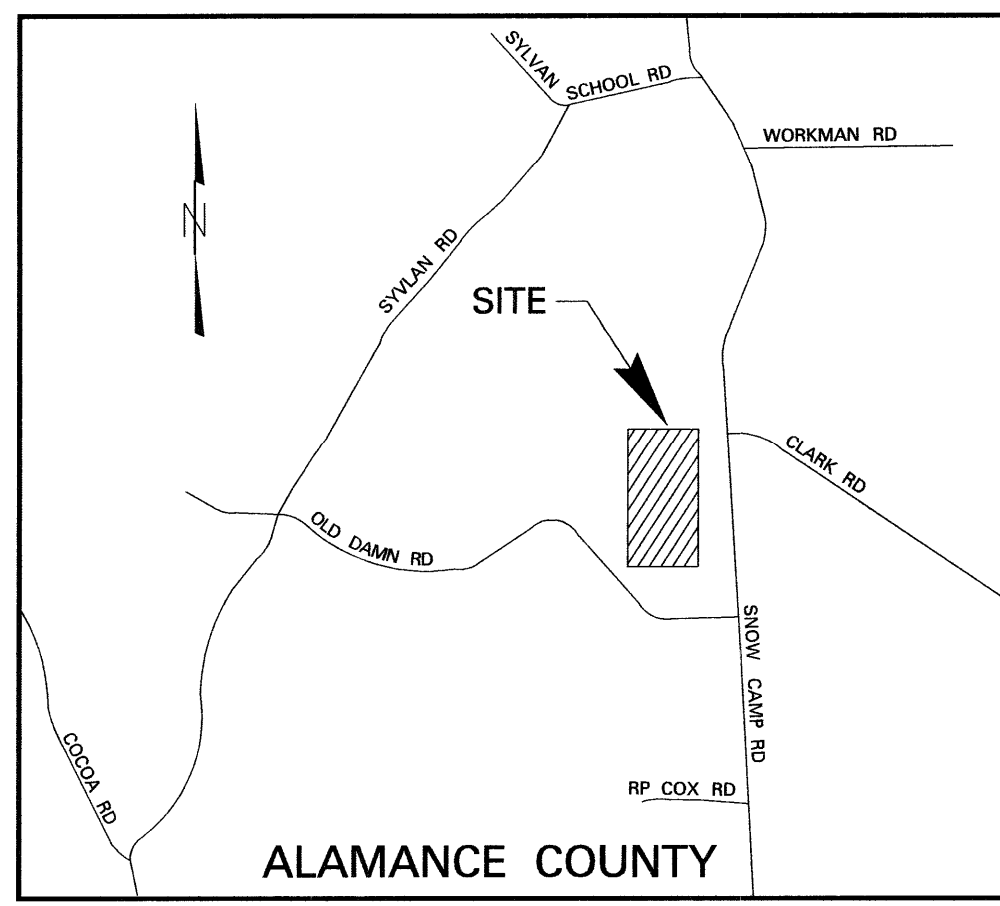
	ROOT WAD
	ROCK CROSS VANE
	J-VANE



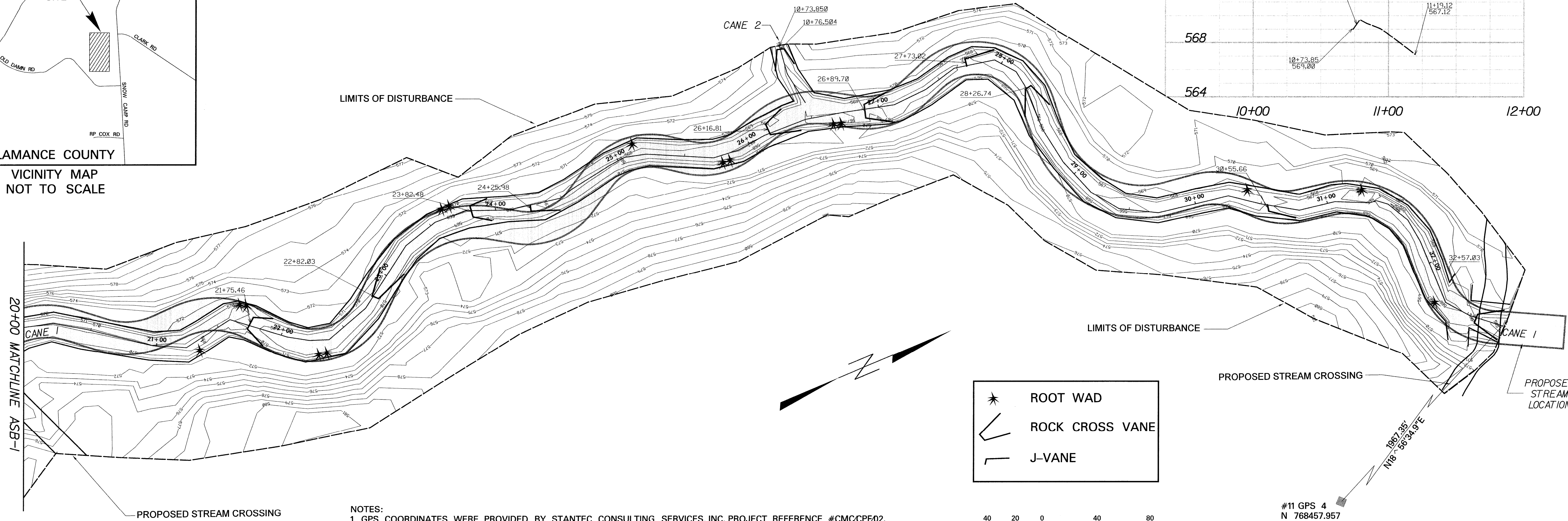
NO.	DATE	REVISIONS
1		
2		
3		
4		
5		
6		
7		
8		

UNNAMED TRIBUTARY
TO CANE CREEK
ALAMANCE COUNTY, NC, MCPHERSON PROPERTY

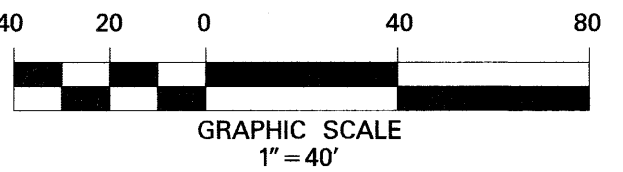
RESTORATION PLANS
ASBUILT



ALAMANCE COUNTY
VICINITY MAP
NOT TO SCALE

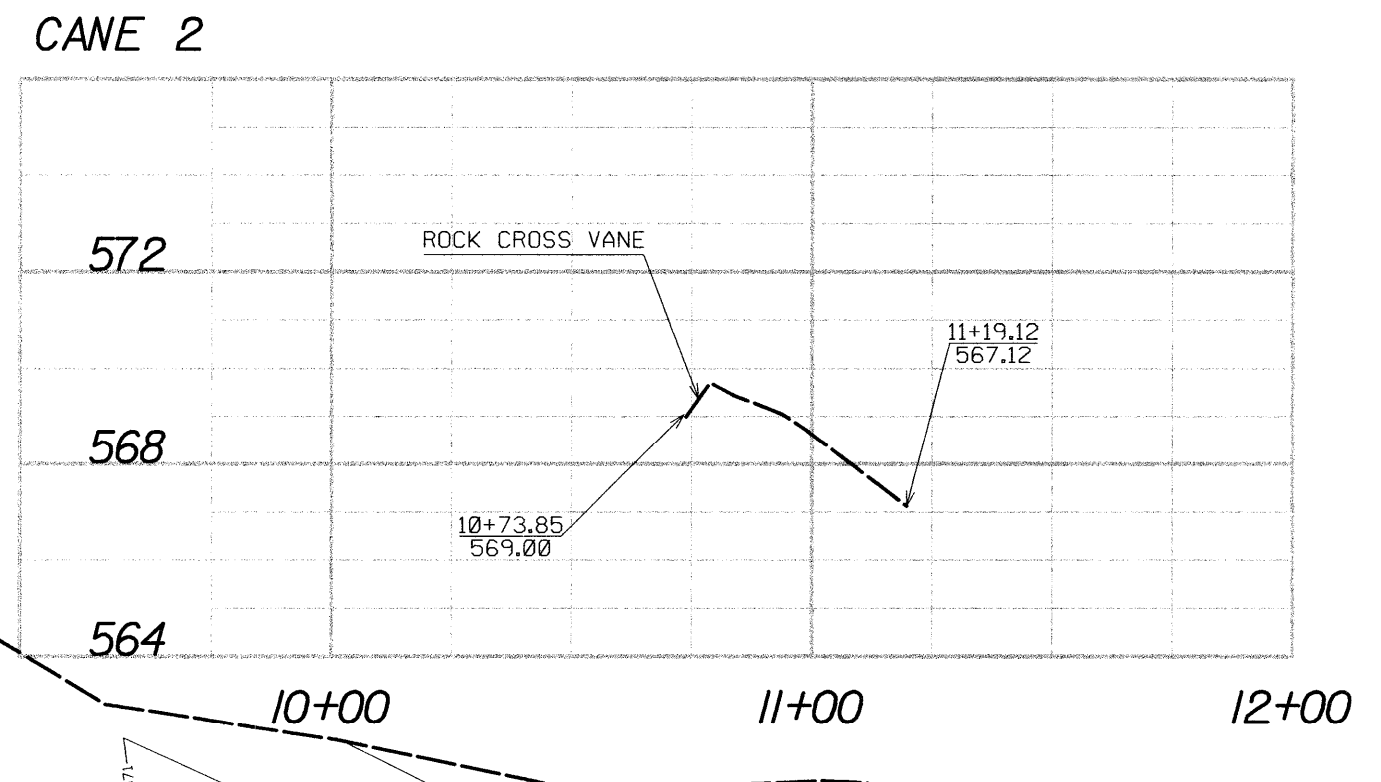
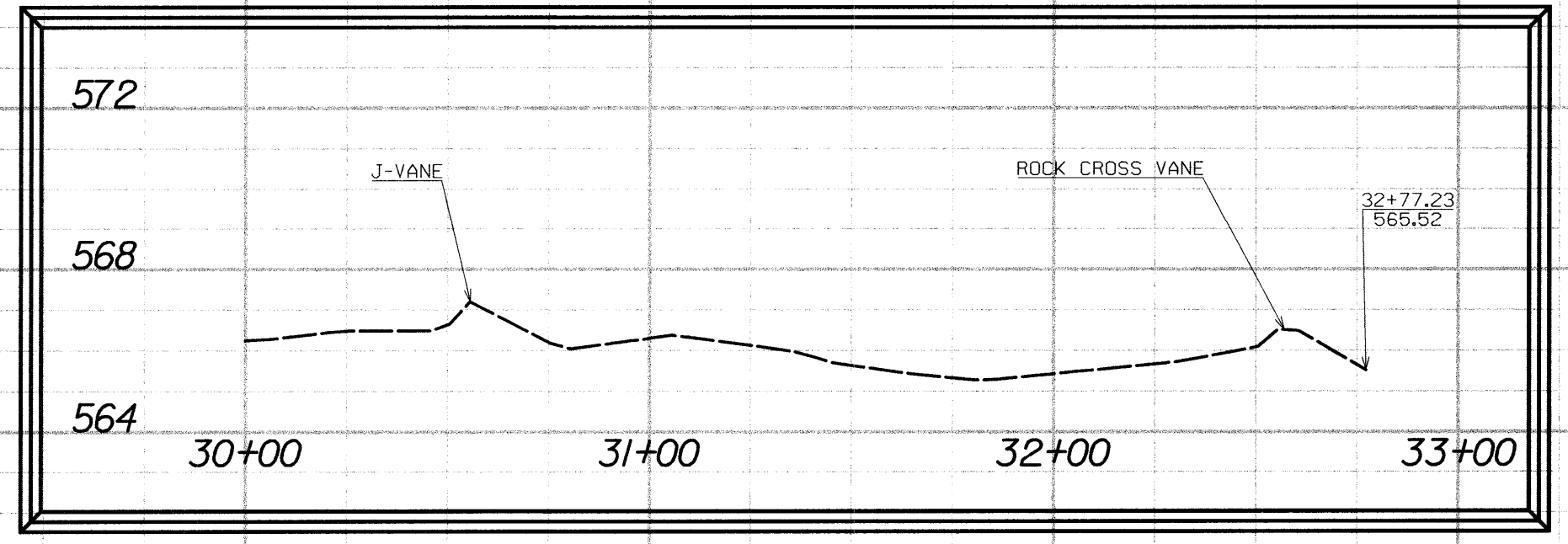
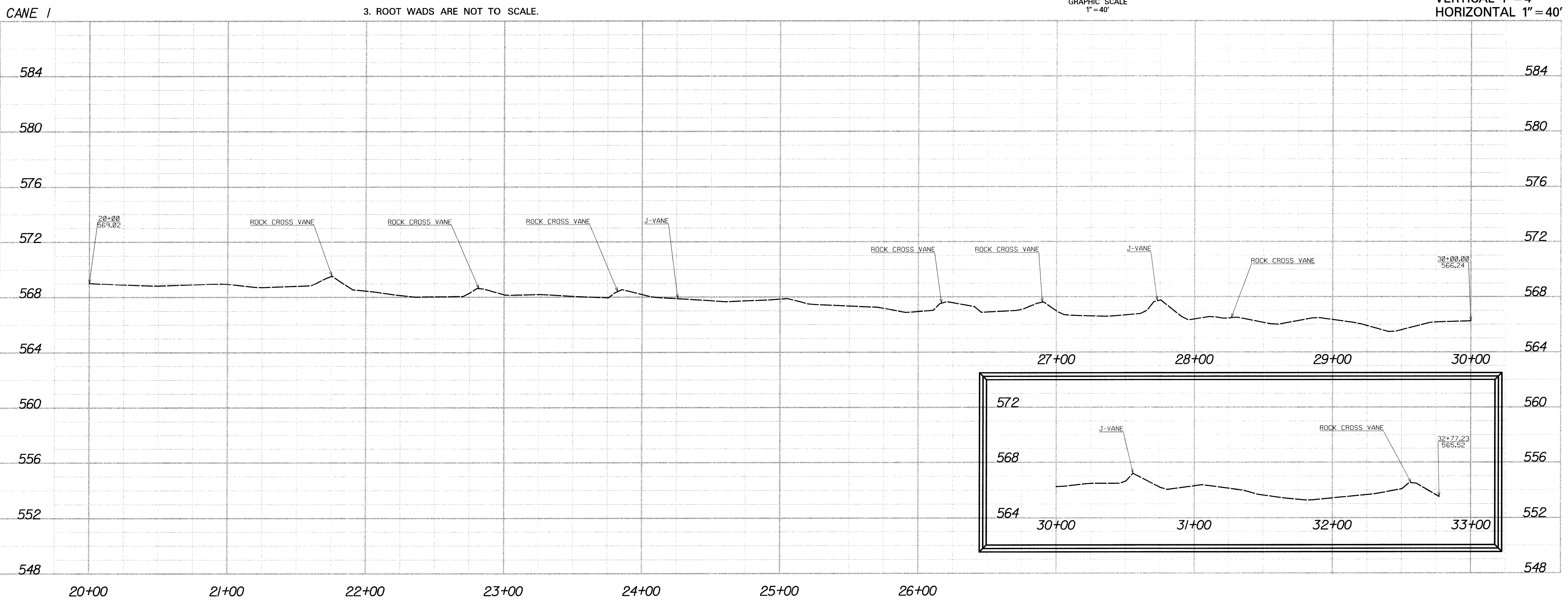


ROOT WAD
 ROCK CROSS VANE
 J-VANE



#11 GPS 4
N 768457.957
E 1872253.665
Z 593.28

- NOTES:
1. GPS COORDINATES WERE PROVIDED BY STANTEC CONSULTING SERVICES, INC. PROJECT REFERENCE #CMCCPF02.
 2. ROCK VANE STATIONS SHOWN ARE CENTERLINE AT HEAD OF STRUCTURE.
 3. ROOT WADS ARE NOT TO SCALE.



MULKEY
ENGINEERS & CONSULTANTS
1000 W. HARRIS ST. SUITE 200
RANDOLPH, NC 27630
TEL: 703.331.1111 FAX: 703.331.1112
WWW.MULKEYINC.COM

DATE: 2-29-06

DRAWN BY: CRD

DWG. CHECKED BY: DFB

DESIGNED BY:

DGN. CHECKED BY:

SCALE: 1" = 40'

PROJECT NO. 2005405.00

NO.	DATE	REVISIONS
1		
2		
3		
4		
5		
6		
7		
8		

UNNAMED TRIBUTARY TO CANE CREEK

ALAMANCE COUNTY, NC, MCPHERSON PROPERTY

RESTORATION PLANS TO CANE CREEK

ASBULT

DRAWING NO. ASB-2

130051.405 0043631113A.V3B2.dwg 6/2/2005 9:12:20 AM