

WK DICKSON & CO., INC. ALL RIGHTS RESERVED. REPRODUCTION OR USE OF THE CONTENTS OF THIS DOCUMENT IS PROHIBITED WITHOUT THE WRITTEN PERMISSION OF WK DICKSON & CO., INC. THIS DOCUMENT IS THE PROPERTY OF WK DICKSON & CO., INC. AND SHALL BE CONSIDERED VOID IF NOT SIGNED BY AN ORIGINAL SIGNATURE AND SEAL.

LEGEND

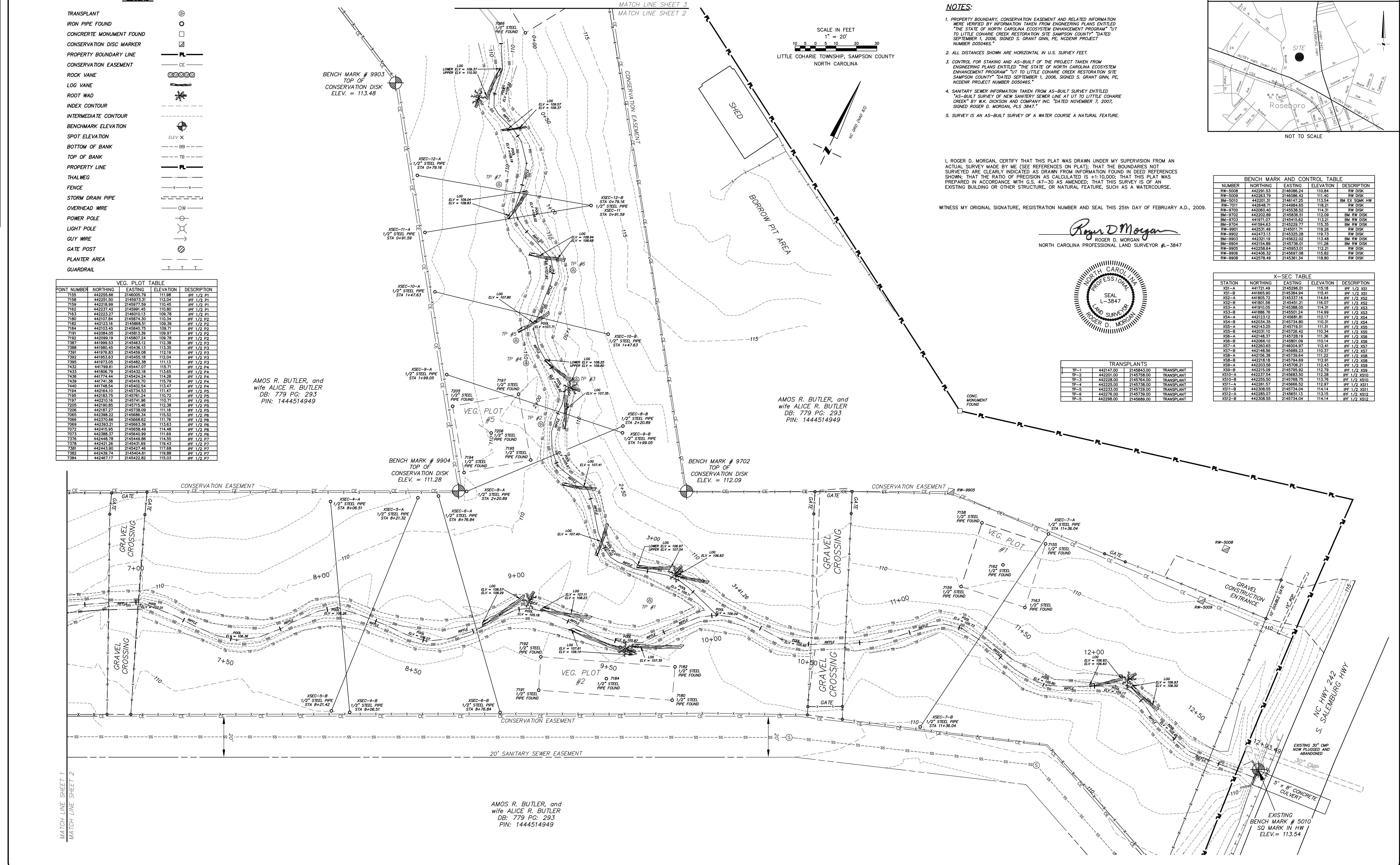
- TRANSPLANT
- IRON PIPE FOUND
- CONCRETE MONUMENT FOUND
- CONSERVATION DISC MARKER
- PROPERTY BOUNDARY LINE
- CONSERVATION EASEMENT
- ROCK VANE
- LOG VANE
- ROOT WAD
- INDEX CONTOUR
- INTERMEDIATE CONTOUR
- BENCHMARK ELEVATION
- SPOT ELEVATION
- BOTTOM OF BANK
- TOP OF BANK
- PROPERTY LINE
- THALWEG
- FENCE
- STORM DRAIN PIPE
- OVERHEAD WIRE
- POWER POLE
- LIGHT POLE
- GUY WIRE
- GATE POST
- PLANTER AREA
- GUARDRAIL

VEG. PLOT TABLE

POINT NUMBER	NORTHING	EASTING	ELEVATION	DESCRIPTION
7153	442255.69	2146005.79	111.98	IPF 1/2 P1
7158	442251.50	2145973.31	112.04	IPF 1/2 P1
7159	442228.70	2145977.59	110.45	IPF 1/2 P1
7162	442237.42	2145991.45	110.80	IPF 1/2 P2
7163	442233.27	2146010.13	109.78	IPF 1/2 P1
7160	442107.84	2145874.30	110.34	IPF 1/2 P2
7182	442123.18	2145868.51	109.39	IPF 1/2 P2
7184	442103.45	2145840.75	109.71	IPF 1/2 P2
7191	442094.05	2145813.39	109.97	IPF 1/2 P2
7192	442099.19	2145807.24	109.78	IPF 1/2 P2
7387	441990.53	2145463.12	112.38	IPF 1/2 P3
7388	441980.45	2145436.13	113.35	IPF 1/2 P3
7391	441976.83	2145459.08	112.19	IPF 1/2 P3
7392	441983.63	2145455.18	112.04	IPF 1/2 P3
7395	441973.05	2145482.38	111.13	IPF 1/2 P3
7432	441799.61	2145447.07	115.71	IPF 1/2 P4
7433	441806.79	2145432.18	113.65	IPF 1/2 P4
7436	441774.44	2145424.24	114.26	IPF 1/2 P4
7439	441741.38	2145416.70	115.79	IPF 1/2 P4
7440	441745.54	2145422.54	113.47	IPF 1/2 P4
7194	442164.10	2145734.53	111.47	IPF 1/2 P5
7195	442163.75	2145781.24	110.72	IPF 1/2 P5
7197	442210.16	2145741.96	110.71	IPF 1/2 P5
7205	442190.85	2145715.46	112.38	IPF 1/2 P5
7206	442197.27	2145738.09	111.16	IPF 1/2 P5
7065	442398.22	2145686.34	115.52	IPF 1/2 P6
7066	442370.86	2145688.62	111.76	IPF 1/2 P6
7069	442383.67	2145688.59	113.63	IPF 1/2 P6
7072	442415.95	2145658.49	114.48	IPF 1/2 P6
7073	442388.37	2145640.99	111.69	IPF 1/2 P6
7376	442448.78	2145449.86	114.55	IPF 1/2 P7
7378	442421.26	2145431.69	119.43	IPF 1/2 P7
7381	442443.90	2145427.46	117.68	IPF 1/2 P7
7382	442439.74	2145404.81	119.88	IPF 1/2 P7
7384	442467.17	2145422.82	115.03	IPF 1/2 P7

AMOS R. BUTLER, and
 wife ALICE R. BUTLER
 DB: 779 PG: 293
 PIN: 1444514949

AMOS R. BUTLER, and
 wife ALICE R. BUTLER
 DB: 779 PG: 293
 PIN: 1444514949



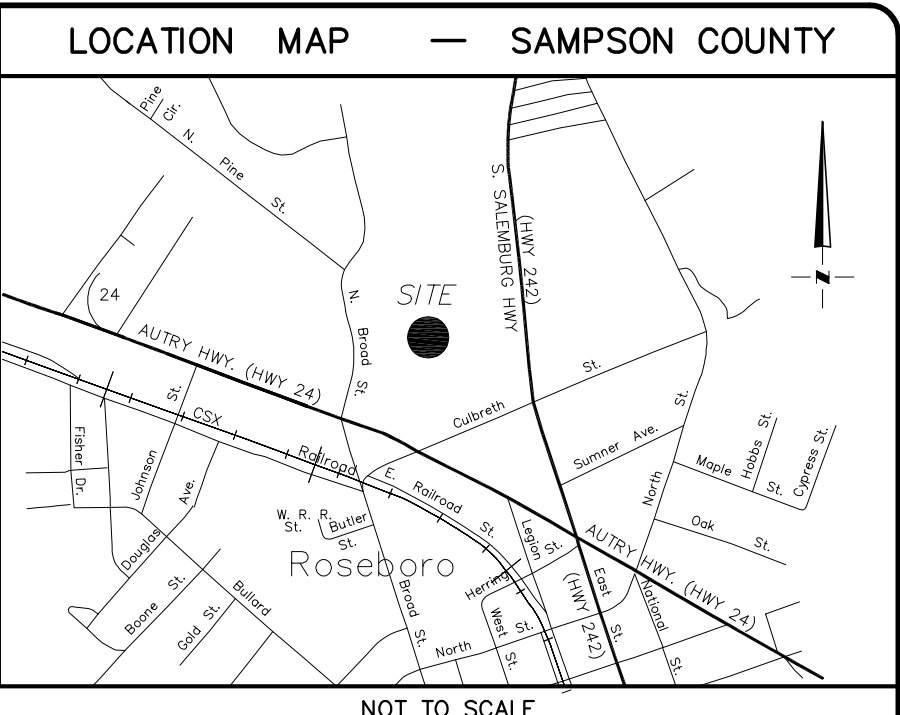
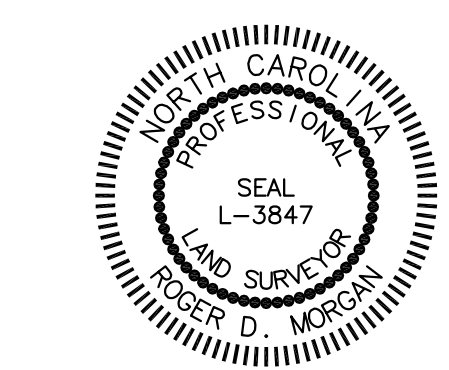
NOTES:

- PROPERTY BOUNDARY, CONSERVATION EASEMENT AND RELATED INFORMATION WERE VERIFIED BY INFORMATION TAKEN FROM ENGINEERING PLANS ENTITLED "THE STATE OF NORTH CAROLINA ECOSYSTEM ENHANCEMENT PROGRAM" UT TO LITTLE COHARIE CREEK RESTORATION SITE SAMPSON COUNTY" DATED SEPTEMBER 1, 2006, SIGNED S. GRANT GINN, PE, NCDENR PROJECT NUMBER D050465.
- ALL DISTANCES SHOWN ARE HORIZONTAL IN U.S. SURVEY FEET.
- CONTROL FOR STAKING AND AS-BUILT OF THE PROJECT TAKEN FROM ENGINEERING PLANS ENTITLED "THE STATE OF NORTH CAROLINA ECOSYSTEM ENHANCEMENT PROGRAM" UT TO LITTLE COHARIE CREEK RESTORATION SITE SAMPSON COUNTY" DATED SEPTEMBER 1, 2006, SIGNED S. GRANT GINN, PE, NCDENR PROJECT NUMBER D050465.
- SANITARY SEWER INFORMATION TAKEN FROM AS-BUILT SURVEY ENTITLED "AS-BUILT SURVEY OF NEW SANITARY SEWER LINE AT UT TO LITTLE COHARIE CREEK" BY W.K. DICKSON AND COMPANY INC. DATED NOVEMBER 7, 2007, SIGNED ROGER D. MORGAN, PLS 3847.
- SURVEY IS AN AS-BUILT SURVEY OF A WATER COURSE A NATURAL FEATURE.

I, ROGER D. MORGAN, CERTIFY THAT THIS PLAT WAS DRAWN UNDER MY SUPERVISION FROM AN ACTUAL SURVEY MADE BY ME (SEE REFERENCES ON PLAT); THAT THE BOUNDARIES NOT SURVEYED ARE CLEARLY INDICATED AS DRAWN FROM INFORMATION IN DEED REFERENCES SHOWN; THAT THE RATIO OF PRECISION AS CALCULATED IS +1:10,000; THAT THIS PLAT WAS PREPARED IN ACCORDANCE WITH G.S. 47-30 AS AMENDED; THAT THIS SURVEY IS OF AN EXISTING BUILDING OR OTHER STRUCTURE, OR NATURAL FEATURE, SUCH AS A WATERCOURSE.

WITNESS MY ORIGINAL SIGNATURE, REGISTRATION NUMBER AND SEAL THIS 25TH DAY OF FEBRUARY A.D., 2009.

ROGER D. MORGAN
 NORTH CAROLINA PROFESSIONAL LAND SURVEYOR #1-3847



BENCH MARK AND CONTROL TABLE

NUMBER	NORTHING	EASTING	ELEVATION	DESCRIPTION
RW-5008	442291.53	2146086.24	110.84	RW DISK
RW-5009	442283.79	2146086.42	111.40	RW DISK
BM-5010	442201.31	2146147.25	113.54	BM EX SOKK HW
RW-7011	442848.71	2144984.85	118.21	RW DISK
RW-9700	442960.40	2145335.52	114.31	RW DISK
BM-9702	442202.89	2145836.51	112.09	BM RW DISK
BM-9703	442107.07	2145415.62	113.21	BM RW DISK
BM-9704	441584.63	2145229.77	115.35	BM RW DISK
RW-9901	442531.49	2145011.71	119.25	RW DISK
RW-9902	442473.13	2145325.28	119.73	RW DISK
BM-9903	442321.19	2145622.02	113.48	BM RW DISK
BM-9904	442154.89	2145736.01	111.28	BM RW DISK
RW-9905	442258.64	2145651.01	113.15	RW DISK
RW-9906	442406.32	2145687.08	115.82	RW DISK
RW-9908	442578.49	2145581.54	118.80	RW DISK

X-SEC TABLE

STATION	NORTHING	EASTING	ELEVATION	DESCRIPTION
XS1-A	441721.49	2145398.01	113.18	IPF 1/2 XS1
XS1-B	441665.90	2145384.94	115.41	IPF 1/2 XS1
XS2-A	441805.72	2145337.16	114.64	IPF 1/2 XS2
XS2-B	441801.58	2145451.01	115.07	IPF 1/2 XS2
XS3-A	441910.05	2145388.05	114.31	IPF 1/2 XS3
XS3-B	441886.78	2145501.24	114.99	IPF 1/2 XS3
XS4-A	442123.12	2145681.01	112.17	IPF 1/2 XS4
XS4-B	442034.35	2145734.80	110.31	IPF 1/2 XS4
XS5-A	442143.25	2145719.51	111.31	IPF 1/2 XS5
XS5-B	442031.10	2145728.42	110.34	IPF 1/2 XS5
XS6-A	442148.37	2145728.19	111.36	IPF 1/2 XS6
XS6-B	442068.10	2145801.12	110.14	IPF 1/2 XS6
XS7-A	442260.65	2146004.97	112.41	IPF 1/2 XS7
XS7-B	442148.36	2145989.23	110.37	IPF 1/2 XS7
XS8-A	442156.36	2145739.64	111.22	IPF 1/2 XS8
XS8-B	442218.18	2145794.69	112.91	IPF 1/2 XS8
XS9-A	442203.56	2145705.91	113.43	IPF 1/2 XS9
XS9-B	442215.09	2145795.92	112.79	IPF 1/2 XS9
XS10-A	442237.54	2145683.50	112.28	IPF 1/2 XS10
XS10-B	442258.64	2145768.75	113.78	IPF 1/2 XS10
TP-1	442225.00	2145738.00	TRANSPLANT	
TP-2	442225.00	2145738.00	TRANSPLANT	
TP-3	442225.00	2145738.00	TRANSPLANT	
TP-4	442225.00	2145738.00	TRANSPLANT	
TP-5	442225.00	2145738.00	TRANSPLANT	
TP-6	442225.00	2145738.00	TRANSPLANT	
TP-7	442225.00	2145738.00	TRANSPLANT	
TP-8	442225.00	2145738.00	TRANSPLANT	
TP-9	442225.00	2145738.00	TRANSPLANT	
TP-10	442225.00	2145738.00	TRANSPLANT	
TP-11	442225.00	2145738.00	TRANSPLANT	
TP-12	442225.00	2145738.00	TRANSPLANT	
TP-13	442225.00	2145738.00	TRANSPLANT	
TP-14	442225.00	2145738.00	TRANSPLANT	
TP-15	442225.00	2145738.00	TRANSPLANT	
TP-16	442225.00	2145738.00	TRANSPLANT	
TP-17	442225.00	2145738.00	TRANSPLANT	
TP-18	442225.00	2145738.00	TRANSPLANT	
TP-19	442225.00	2145738.00	TRANSPLANT	
TP-20	442225.00	2145738.00	TRANSPLANT	
TP-21	442225.00	2145738.00	TRANSPLANT	
TP-22	442225.00	2145738.00	TRANSPLANT	
TP-23	442225.00	2145738.00	TRANSPLANT	
TP-24	442225.00	2145738.00	TRANSPLANT	
TP-25	442225.00	2145738.00	TRANSPLANT	

REVISIONS

REV. NO.	DESCRIPTION	DATE
REV. 7	REVISED TO SHOW ELEV. OF LOG STRUCTURE AT 9+75	2/26/2009
REV. 2	REVISED TO SHOW ADDITIONAL LOCATED STRUCTURES	2/23/2009
REV. 6	REVISED PER ENGINEER COMMENTS	01/21/2009
REV. 5	REVISED PER ENGINEER COMMENTS	01/08/2009
REV. 4	REVISED PER ENGINEER COMMENTS	12/01/2008
REV. 3	REVISED PER ENGINEER COMMENTS	08/20/2008

PROJECT MANAGER: RDM
 DRAWING SCALE: 1" = 20'
 DRAWN BY: DEC
 PROJECT DATE: 01-10-08
 APPROVED BY: RDM
 PROJECT NUMBER: 7043900HI
 DRAWING FILE NAME: COHARIE-70439-ASBLT-V01

401 4th STREET, SW, SUITE 201
 HICKORY, NC 28602
 (828) 327-6911

WK DICKSON
 community infrastructure consultants

Office Locations:
 North Carolina
 South Carolina
 Georgia
 Florida

SURVEY BY: SW
 FIELDBOOK NO(S):
 FIELDBOOK PAGE(S):
 COGO FILE(S) NAME:

PREPARED FOR:
 SHAMROCK ENVIRONMENTAL CORP.
 6106 CORPRATE PARK DR.
 BROWNS SUMMIT, NC 27214

SURVEY DATE: 01-10-08

PREPARED FOR:
 SHAMROCK ENVIRONMENTAL CORP.
 6106 CORPRATE PARK DR.
 BROWNS SUMMIT, NC 27214

TITLE:
 AS-BUILT SURVEY OF
 UT TO LITTLE COHARIE CREEK
 SAMPSON COUNTY, ROSEBORO, NC