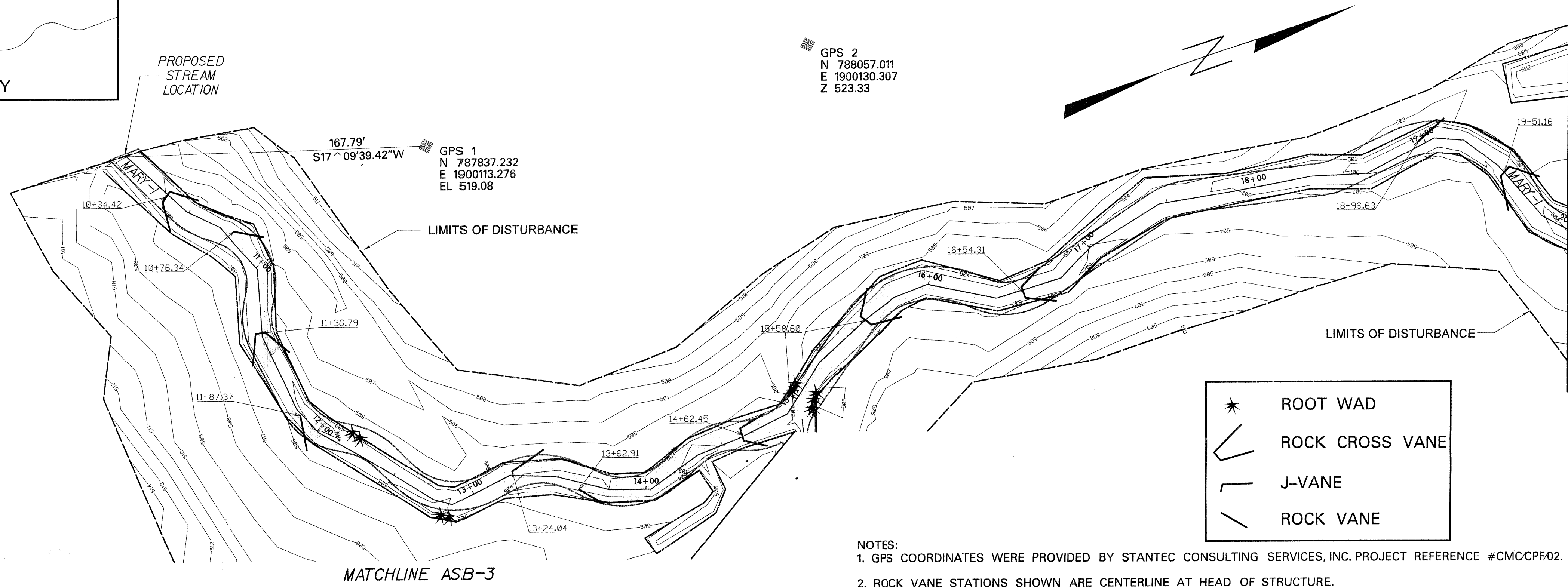
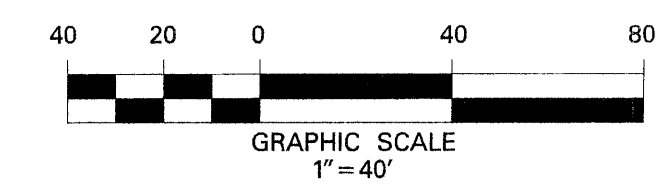


ALAMANCE COUNTY
VICINITY MAP
NOT TO SCALE

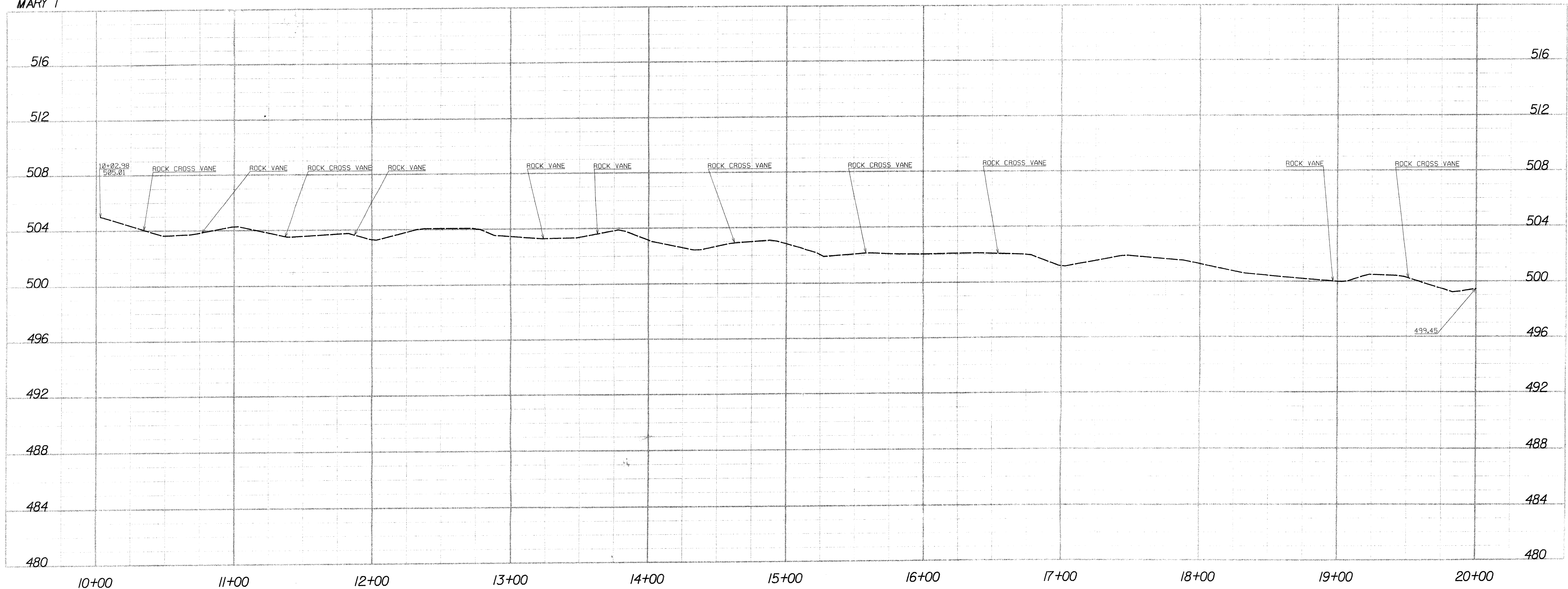


- ROOT WAD
- ROCK CROSS VANE
- J-VANE
- ROCK VANE

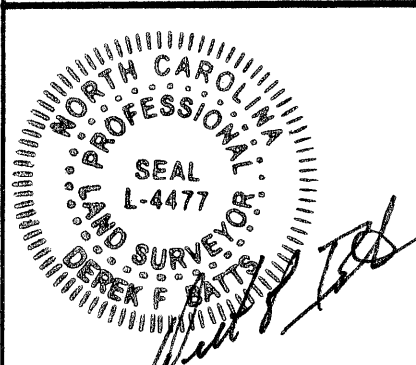


- NOTES:
- GPS COORDINATES WERE PROVIDED BY STANTEC CONSULTING SERVICES, INC. PROJECT REFERENCE #CMC/CP/02.
 - ROCK VANE STATIONS SHOWN ARE CENTERLINE AT HEAD OF STRUCTURE.
 - ROOT WADS ARE NOT TO SCALE.

MARYS /



VERTICAL 1" = 4'
HORIZONTAL 1" = 40'



DATE: 3-29-06

DRAWN BY: CRD

DWG. CHECKED BY: DFB

DESIGNED BY:

DGN. CHECKED BY:

SCALE: 1" = 40'

PROJECT NO.: 2005405.00

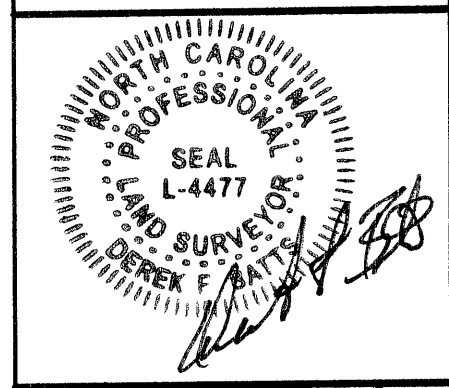
NO.	DATE	REVISIONS	REMARKS
1			
2			
3			
4			
5			
6			
7			
8			

UNNAMED TRIBUTARY
TO MARYS CREEK

ALAMANCE COUNTY, NC, DIXON PROPERTY

RESTORATION PLANS
ASBULT

DRAWING NO.
ASB-1



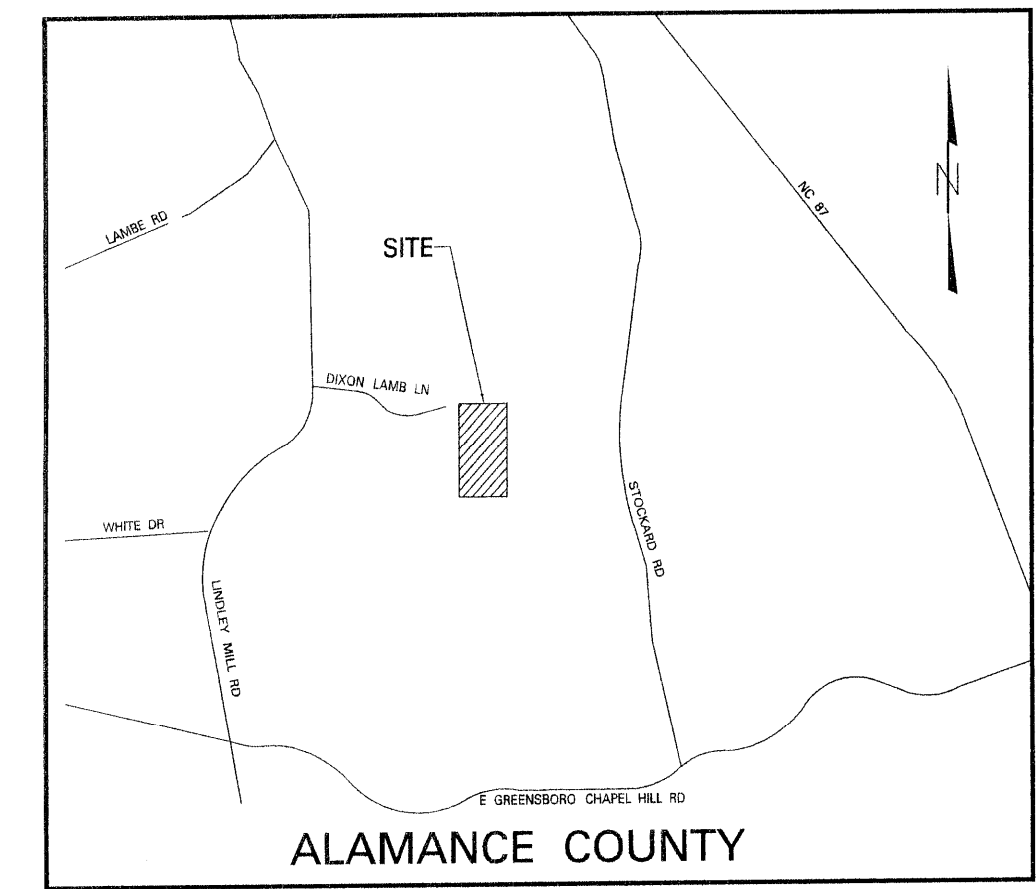
DATE: 3-29-06
DRAWN BY: CRD
DWG. CHECKED BY: DFB
DESIGNED BY:
DGN. CHECKED BY:
SCALE: 1" = 40'
PROJECT NO. 2006405.00

NO.	DATE	REVISIONS	REMARKS
1			
2			
3			
4			
5			
6			
7			
8			

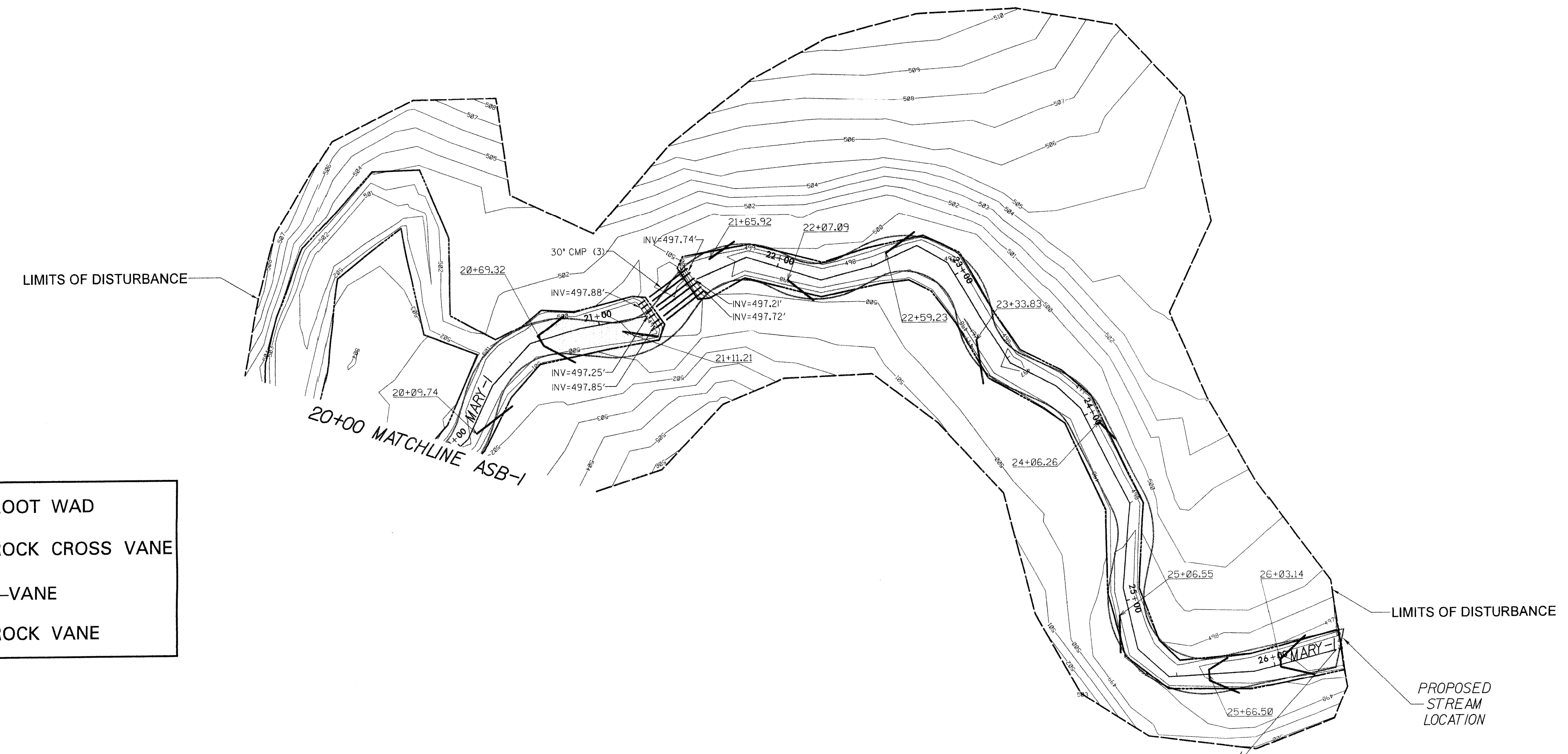
UNNAMED TRIBUTARY TO MARYS CREEK
ALAMANCE COUNTY, NC, DIXON PROPERTY

RESTORATION PLANS ASBUILT

DRAWING NO. ASB-2

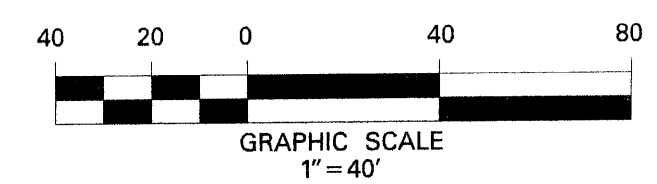


ALAMANCE COUNTY
VICINITY MAP
NOT TO SCALE



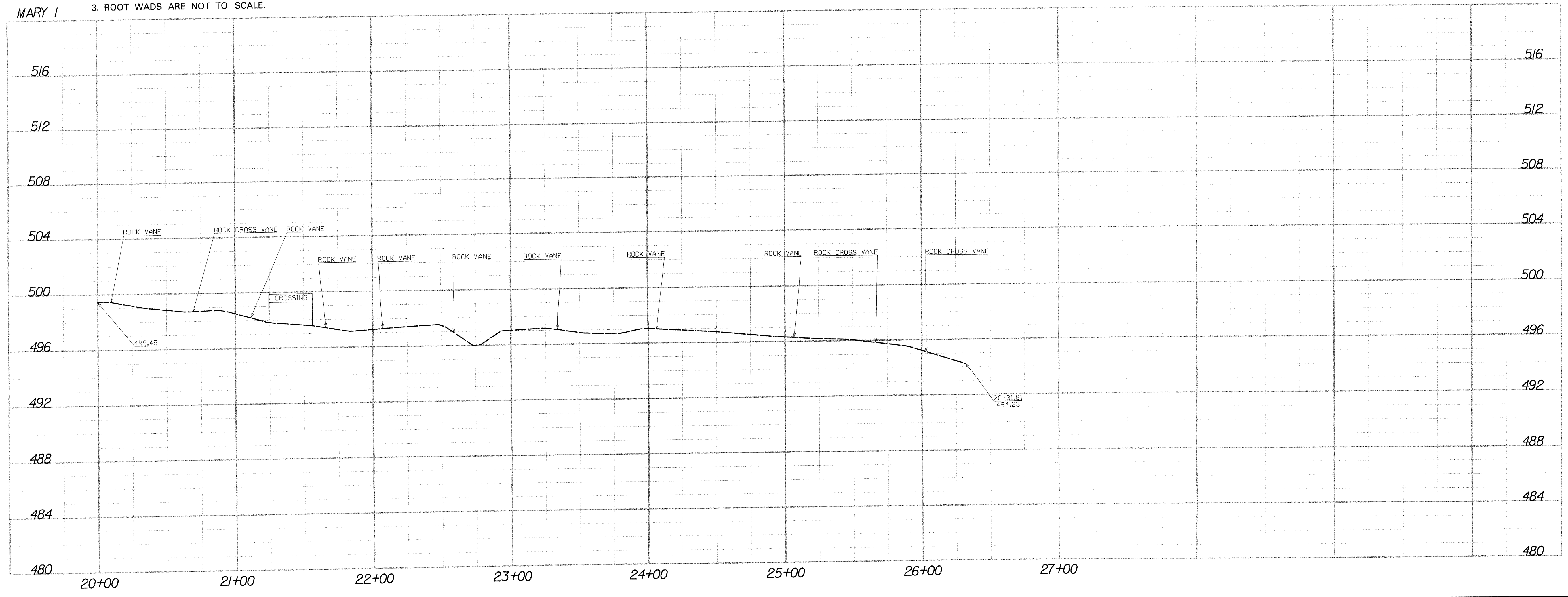
- ROOT WAD
- ROCK CROSS VANE
- J-VANE
- ROCK VANE

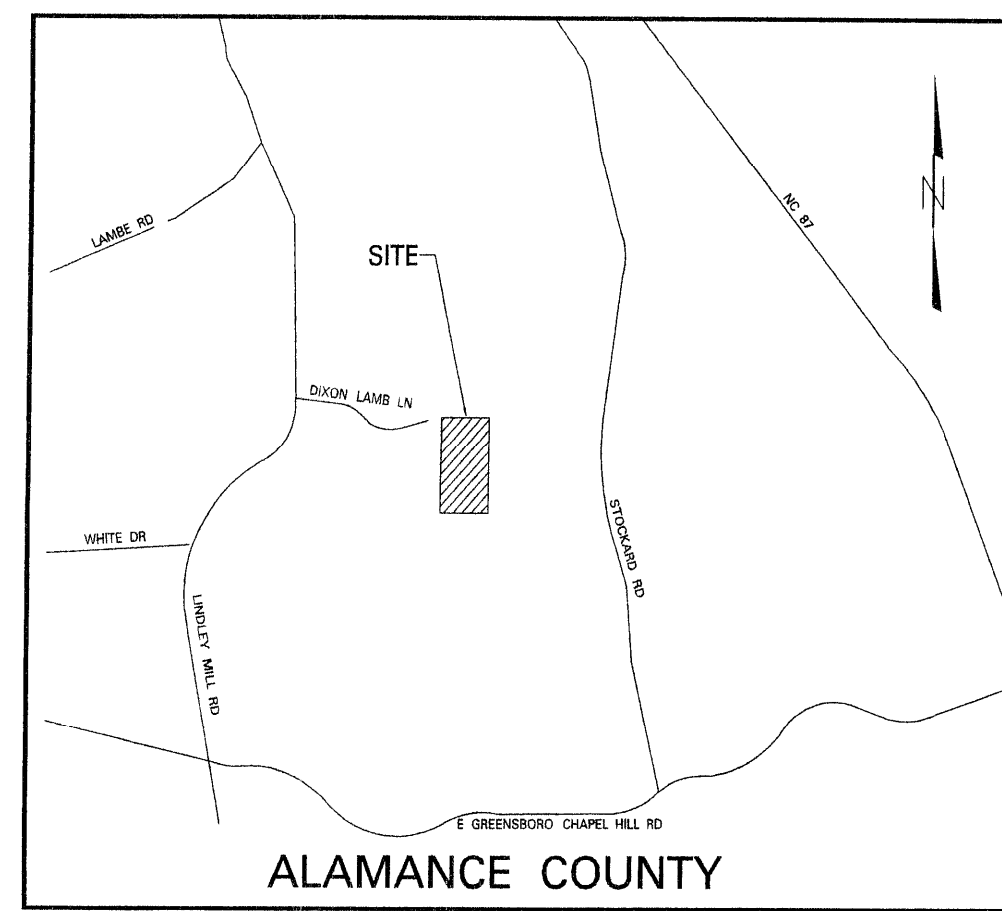
- NOTES:
1. GPS COORDINATES WERE PROVIDED BY STANTEC CONSULTING SERVICES, INC. PROJECT REFERENCE #CMCCPF02.
2. ROCK VANE STATIONS SHOWN ARE CENTERLINE AT HEAD OF STRUCTURE.
3. ROOT WADS ARE NOT TO SCALE.



GPS 1
N 787837.232
E 1900113.276
Z 519.08
N55° 31'05.26" 847.796

VERTICAL 1" = 4'
HORIZONTAL 1" = 40'

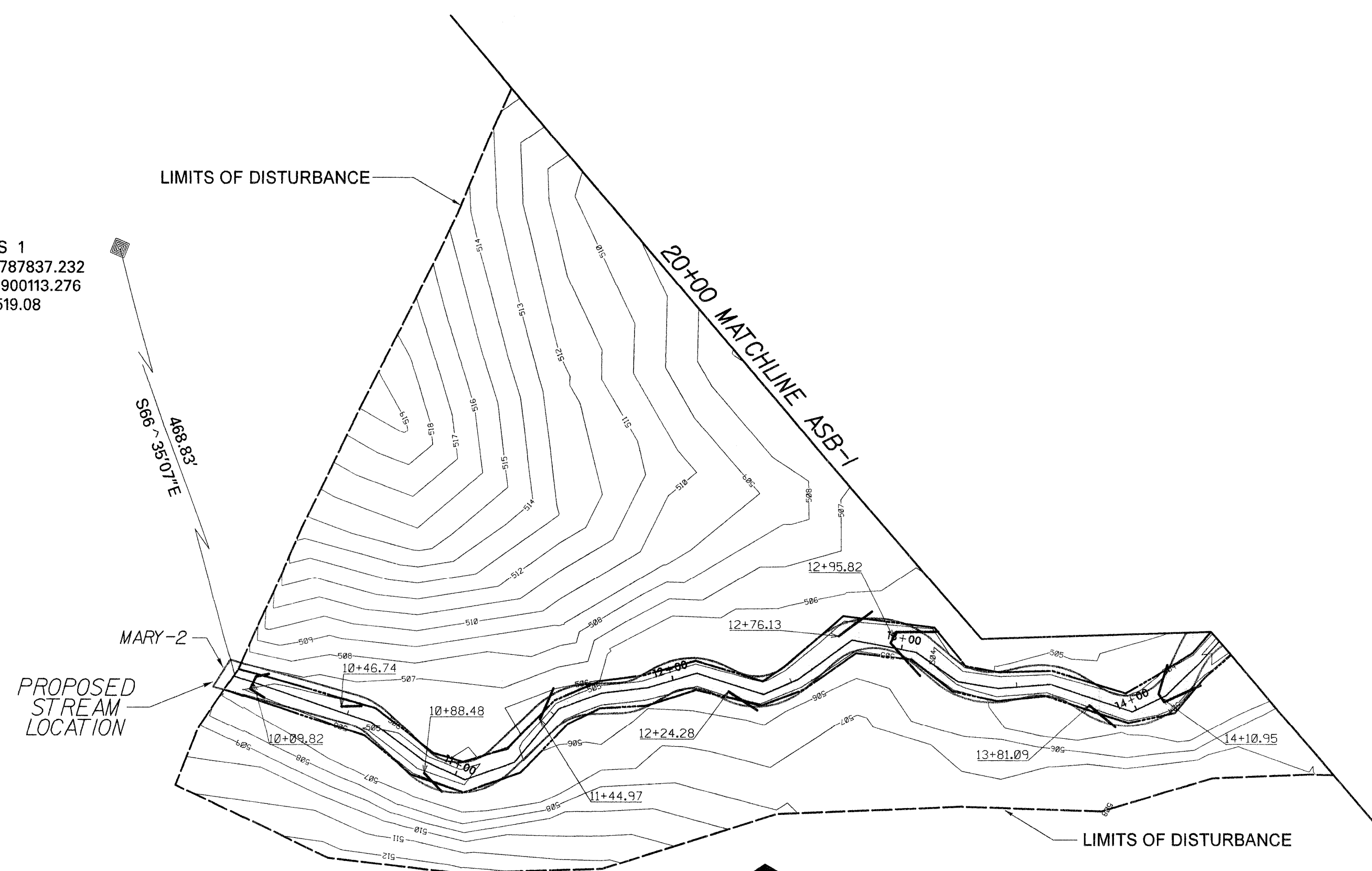




ALAMANCE COUNTY
VICINITY MAP
NOT TO SCALE

- ROOT WAD
- ROCK CROSS VANE
- J-VANE
- ROCK VANE

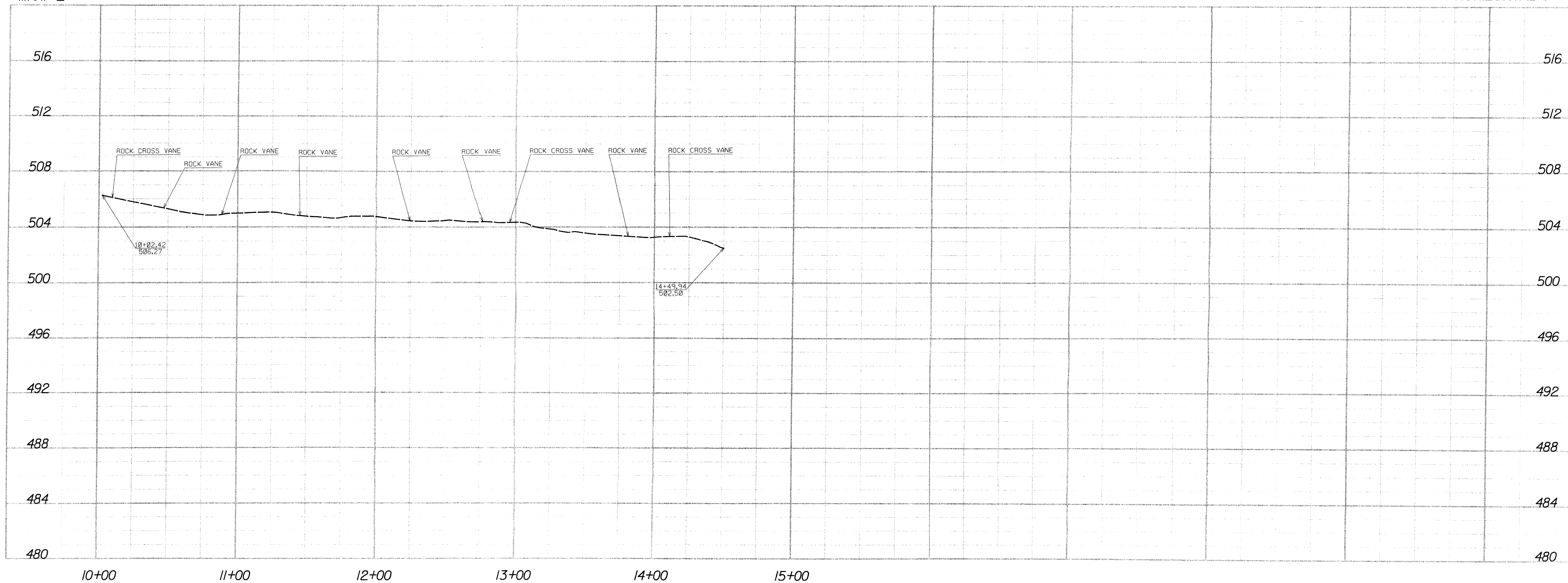
GPS 1
N 787837.232
E 1900113.276
Z 519.08



- NOTES:
- GPS COORDINATES WERE PROVIDED BY STANTEC CONSULTING SERVICES, INC. PROJECT REFERENCE #CMCCPF02.
 - ROCK VANE STATIONS SHOWN ARE CENTERLINE AT HEAD OF STRUCTURE.
 - ROOT WADS ARE NOT TO SCALE.

MARY 2

VERTICAL 1" = 4'
HORIZONTAL 1" = 40'



MULKEY
ENGINEERS & CONSULTANTS
1000 N. W. 10th St., Suite 27636
Fayetteville, NC 27636
Phone: 919.881.1918 (Fax)
www.mulkeyinc.com

[Signature]
SEAL
L-4477
SURVEYOR

DATE:	3-29-06
DRAWN BY:	CP
DWG. CHECKED BY:	DF
DESIGNED BY:	
DGN. CHECKED BY:	
SCALE:	1" = 4'
PROJECT NO.:	2005405

REVISIONS	
NO.	DATE
1	
2	
3	
4	
5	
6	
7	

**UNNAMED TRIBUTARY
TO MARYS CREEK**
ALAMANCE COUNTY, NC, DIXON PROPERTY

**RESTORATION PLANS
ASBUILT**

DRAWING NO.
ASB-3