

# ***YEAR 3 MONITORING REPORT***

## **UT TO NEUSE RIVER (BIG DITCH) STREAM RESTORATION SITE**

Wayne County, North Carolina

SCO No.: 090776201

DMS Project No.: 92682

DWR Project Id No.: 10-0343

USACE Action Id No.: SAW-2010-01782



Prepared for:



**NCDEQ-Division of Mitigation Services (DMS)  
Formerly Ecosystem Enhancement Program (EEP)**

217 West Jones St. Suite 3000A

Raleigh, NC 27603

November 16, 2016

Prepared by:



**ICA Engineering, Inc.**  
**5121 Kingdom Way, Suite 100**  
**Raleigh, North Carolina 27607**  
919.851.6066  
919.851.6846 (fax)

I HEREBY CERTIFY THAT THE DOCUMENT CONTAINED HEREIN, UT NEUSE RIVER (BIG DITCH) YEAR 3 MONITORING REPORT WAS PREPARED BY ME OR UNDER MY DIRECT SUPERVISION.

SIGNED SEALED, AND DATED THIS 3<sup>RD</sup> DAY OF NOVEMBER 2016.



A handwritten signature in blue ink, appearing to read 'Chris L. Smith', written over a horizontal line.

Chris L. Smith, PE

**TABLE OF CONTENTS**

<b><u>SECTION</u></b>	<b><u>PAGE</u></b>
<b>1.0 EXECUTIVE SUMMARY .....</b>	<b>1</b>
1.1 GOALS AND OBJECTIVES .....	1
1.2 VEGETATION .....	1
1.3 STREAM STABILITY .....	2
1.4 WETLANDS.....	3
1.5 NOTE.....	3
<b>2.0 METHODOLOGY .....</b>	<b>3</b>
<b>3.0 REFERENCES.....</b>	<b>3</b>
<b>4.0 APPENDICES .....</b>	<b>5</b>
APPENDIX A. BACKGROUND TABLES.....	6
APPENDIX B. VISUAL ASSESSMENT DATA.....	12
APPENDIX C. VEGETATION PLOT DATA.....	20
APPENDIX D. STREAM SURVEY DATA .....	28
APPENDIX E. HYDROLOGIC DATA.....	39

**LIST OF FIGURES**

<b><u>FIGURE</u></b>	<b><u>PAGE</u></b>
<b>Figure 1.0 Vicinity Map .....</b>	<b>11</b>
<b>Figures 2.0-2.4 Current Condition Plan View.....</b>	<b>12</b>
<b>Figures 3.0-3.13. Vegetation Plot Photos and Pre-existing Condition Photos .....</b>	<b>21</b>
<b>Figure 4.0-4.3 Cross Section Plots .....</b>	<b>29</b>
<b>Figure 5.1-5.2 Longitudinal Profile Plot.....</b>	<b>34</b>
<b>Figure 6.1–6.6 Crest Gauge Photos .....</b>	<b>39</b>

**LIST OF TABLES**

<b><u>TABLE</u></b>	<b><u>PAGE</u></b>
<b>Table 1. Project Components and Mitigation Credits .....</b>	<b>7</b>
<b>Table 2. Project Activity and Reporting History .....</b>	<b>8</b>
<b>Table 3. Project Contacts Table .....</b>	<b>9</b>
<b>Table 4. Project Attributes Table .....</b>	<b>10</b>
<b>Table 5. Visual Stream Morphology Assessment.....</b>	<b>18</b>
<b>Table 6. Vegetation Condition Assessment.....</b>	<b>19</b>
<b>Table 7. Vegetation Plot Mitigation Success Summary .....</b>	<b>25</b>
<b>Table 8. CVS Vegetation Metadata.....</b>	<b>26</b>
<b>Table 9. CVS Stem Count Total and Planted by Plot and Species .....</b>	<b>27</b>
<b>Table 10. Baseline Stream Data Summary .....</b>	<b>36</b>

**Table 11. Monitoring Data – Dimensional Morphology Summary..... 37**  
**Table 12. Monitoring Data – Stream Reach Data Summary..... 38**  
**Table 13. Verification of Bankfull Events ..... 39**

## 1.0 EXECUTIVE SUMMARY

The following report summarizes the vegetation establishment and stream stability for Year 3 of monitoring at the UT Neuse River (Big Ditch) Stream Restoration Site in Wayne County, North Carolina.

### 1.1 Goals and Objectives

The primary goals of the UT Neuse River (Big Ditch) stream restoration site include:

- Reducing sediment loading in the UT
- Improving water quality
- Providing/enhancing flood attenuation
- Restoring and enhancing aquatic riparian habitat

These goals will be achieved through the following objectives:

- Restore a stable dimension, pattern and profile to the UT that will deter degradation of side slopes and mass wasting of banks.
- Stabilize the UT by planting live stakes and bare roots along the channel banks to promote root growth.
- Enhancing the capacity of the site to mitigate flood flows by excavating a 5 foot floodplain bench off of each channel bank and sloping terrace side slopes at a 5:1 grade.
- Enhancing in stream habitat by creating an undulating bedform (shallows/deeps) by placing woody structures in the channel that provide shading, natural food sources, and protective areas for propagation.
- Reducing sedimentation and nutrients from adjacent urban areas by establishing a native riparian buffer through existing open/grassed fields that are currently regularly maintained.
- Improve terrestrial habitat by restoring a forested riparian corridor through a highly urbanized environment which has historically experienced vegetation maintenance and forest segmentation.
- Reduce nutrients and other pollutant inputs by retrofitting a contributing conveyance to a stormwater wetland BMP.

### 1.2 Vegetation

Bare root seedlings of tree species were planted at a density of approximately 680 stems per acre on 8-foot centers. Planted species include river birch (*Betula nigra*), pignut hickory (*Carya glabra*), mockernut hickory (*Carya tomentosa*), green ash (*Fraxinus pennsylvanica*), tulip poplar (*Liriodendron tulipifera*), American sycamore (*Platanus occidentalis*), scarlet oak (*Quercus coccinea*), cherry bark oak (*Quercus falcate car pagodafolia*), water oak (*Quercus nigra*), southern red oak (*Quercus falcata*), and persimmon (*Diospyros virginiana*). Containerized plants included smooth alder

---

(*Alnus serrulata*), white fringe tree (*Chioanthus virginicus*), winter berry (*Ilex verticillata*), and sweetbay magnolia (*Magnolia virginiana*).

Planted stems continue to underperform across the site after the third monitoring year. When only taking into account planted stems, all plots fail to reach success criteria. A dense community of Johnson grass (*Sorghum halepense*) is out-competing many planted stems throughout the site. This community was noted as a potential problem in Year 2 monitoring and is continuing to hinder maturity of planted trees in Year 3. When including natural stems plots 1, 2, 3, 5, 6, and 7 fail to meet success criteria. The site as a whole meets success criteria when including natural recruits with 367 stems per acre.

Plots 8 and 9 are in close proximity to large bare spots and are also subject to frequent overbank flows. Despite previously noted exposed roots and stunted growth, stems in Plots 8 and 9 have resprouted over the course of the monitoring year and both plots meet success criteria when including natural stems.

A population of morning glory is present within the immediate buffer of the stream for the upstream third of the site and appears to have expanded over the previous year. The presence of morning glory does not appear to be hindering the success of plots.

### **1.3 Stream Stability**

Following three years of monitoring, the majority of the UT to Neuse River Site appears to be stable. Stream profile remains largely consistent with previous monitoring years, with the majority of the scouring occurring in pools. Overall, aggregation and degradation throughout the profile has been minimal.

Overbank sediment deposition is occurring from approximately station 10+00 – 19+50. Additionally, Cross Section 1 is demonstrating a narrowing channel due to sediment deposition along the banks. At Cross Section 4 the channel bed is scouring and sediment is being deposited on the floodplain. Width/Depth ratio remains consistent with Year 2 monitoring data.

Bank erosion has increased from approximately 120 feet along the channel to approximately 300 feet. The majority of this erosion is occurring in areas with poor vegetative cover or thin grass, leaving the banks exposed and prone to erosion. If this trend continues supplemental planting may be necessary.

The site has experienced at least four bankfull flows through the first two years of monitoring. The crest gauge installed on-site was inspected on February 26, 2016 and was found in need of repair due to high flows. The crest gauge was reinstalled on

3/30/2016. Bankfull event records can be seen in Table 13. Additional overbank evidence includes debris and detritus lines, vegetation bent in the downstream direction, and exposed roots within the floodplain and on terrace slopes.

#### **1.4 Wetlands**

No wetland monitoring areas were established for this project report.

#### **1.5 Note**

Summary information and statistics related to performance of various project and monitoring elements can be found in tables and figures in the report appendices. Narrative background and supporting information formerly found in these reports can be found in the Baseline Monitoring Report and in the Mitigation Plan documents available on DMS's website. All raw data supporting tables and figures in the appendices is available from DMS upon request.

### **2.0 METHODOLOGY**

The Year 3 Monitoring survey was completed utilizing total station equipment. Each cross section is marked with two rebar monuments at their beginning and ending points. The rebar has been located vertically and horizontally in NAD 83 State Plane. Surveying these monuments throughout the site ensure proper orientation. The survey data was imported into MicroStation for verification. RIVERMorph and Dan Mecklenburg's The Reference Reach Spreadsheet Version 4.3L was used to analyze the profile and cross section data. Tables and figures were created using Microsoft Excel.

The channel is entirely a sand bed system; therefore, a pebble count was not conducted. It should be noted that the restored channel is dominated by sand, not detritus as was the case in pre-restoration conditions.

Vegetation monitoring was completed using CVS level II methods, for 9, 100 square meter vegetation plots (Lee et al. 2008). The taxonomic standard for vegetation used for this document was Flora of the Southern and Mid-Atlantic States (Weakley 2011).

### **3.0 REFERENCES**

Lee, M.T., R.K. Peet, S.D. Roberts, and T.R. Wentworth. 2008. CVS-EEP Protocol for Recording Vegetation. Version 4.2. North Carolina Department of Environment and Natural Resources, Ecosystem Enhancement Program. Raleigh, North Carolina.

NCDENR-Ecosystem Enhancement Program. 2014. Baseline Monitoring Document and As-Built Baseline Report, UT to Neuse River (Big Ditch) Stream Restoration Project, Wayne County, North Carolina.

United States Army Corps of Engineers, United States Environmental Protection Agency, North Carolina Wildlife Resources Commission, North Carolina Division of Water Quality (USACE et al.). 2003. Stream Mitigation Guidelines.

Weakley, Alan S. 2011. Flora of the Carolinas, Virginia, Georgia, and Surrounding Areas (online). Available: [http://www.herbarium.unc.edu/FloraArchives/Weakley\\_Flora\\_2006-Jan.pdf](http://www.herbarium.unc.edu/FloraArchives/Weakley_Flora_2006-Jan.pdf) [January 6, 2006]. University of North Carolina Herbarium, North Carolina Botanical Garden, University of North Carolina, Chapel Hill, North Carolina.



**4.0 APPENDICES**

Appendix A. Background Tables

**Table 1. Project Components and Mitigation Credits  
UT Neuse (Big Ditch) (DMS Project ID No. 92682)**

Mitigation Credits										
	Stream	Stream (at sewer crossing)	Total Stream	Riparian Buffer* (square feet)			Nitrogen Buffer Offset			
							Buffer Restoration **			
Type	R	R	R	TOB to 50'	50' to 100'	100' to 200'	Buffer Zone	<= 50'	50'-100'	100' - 200'
Restored LF or FT <sup>2</sup>	2,072	60	2,132	157,756	107,778	78,632		157,756	107,778	11,651
Credit Ratio	1:1	2:1	1:1 & 2:1	1:1	1:1	4:1		1:1	1:1	1:1
Totals	2,072	30	2,102	157,756	107,778	19,658	Pound Reduction	0	5,624	4,103
Project Components										
Project Component - or- Reach ID	Stationing/Location			Existing Footage/ Acreage	Approach (PI, PII, etc)	Restoration -or- Restoration Equivalent	Restoration Footage or Acreage	Mitigation Ratio		
UT	10+00 - 31+32			2,113	PII	R	2,132	1:1 (2:1 at 60' sewer crossing)		
Riparian Buffers	TOB to 50'			-	-	R	3.62	1:1		
	50' - 100'			-	-	R	2.47	1:1		
	100'-200'			-	-	R	0.45	4:1		
Component Summation										
Restoration Level	Stream (linear feet)			Buffer (square ft.)			Buffer Nitrogen Nutrient Offset			
Restoration	2,132			285,192			9,727			
BMP Elements										
Element	Size (AC)		Purpose/ Function	1 yr Total Nitrogen Reduction (lbs)			30 yr. Total Nitrogen Reduction (lbs)			
Stormwater Wetland	0.253		Water Quality/ Nutrient	49			1,470			
* - Riparian Buffer areas may be used for stream & riparian buffer mitigation, or nutrient offset credit (Estimating/Calculating Riparian Buffer Credits, EEP PPPM Section 8.3.1.2).										
** - Stream and Riparian Buffer Mitigation Credit Numbers were adjusted based on proposed DWQ guidelines (Draft Regulatory Guidance for the Calculation of Stream and Buffer Mitigation Credit for Buffer width different from standard minimum widths. Version 4.5, July 20, 2010.)										

**Table 2. Project Activity and Reporting History**  
 UT Neuse (Big Ditch) (DMS Project ID No. 92682)

<b>Activity or Report</b>	<b>Data Collection Complete</b>	<b>Completion or Delivery</b>
Restoration Plan	January 2010	February 2010
Final Design – Construction Plans	January 2011	May 2012
Construction	January 23, 2013	September 5, 2013
Temporary S&E Mix Applied to Entire Project Area	January 23, 2013	September 5, 2013
Permanent Seed Mix Applied to Entire Project Area	January 23, 2013	September 5, 2013
Bare Root, Containerized, and B&B plantings for Entire Project Area	January 14, 2014	January 15, 2014
Mitigation Plan/As-built (Year 0 Monitoring-Baseline)	September 17, 2013	February 28, 2014
Year 1 Monitoring	April 28, 2014	December, 2014
Year 2 Monitoring	August 31, 2015	November, 2015
Year 3 Monitoring	August 23, 2016	November, 2016
Year 4 Monitoring		
Year 5 Monitoring		

**Table 3. Project Contacts Table**  
**UT Neuse (Big Ditch) (DMS Project ID No. 92682)**

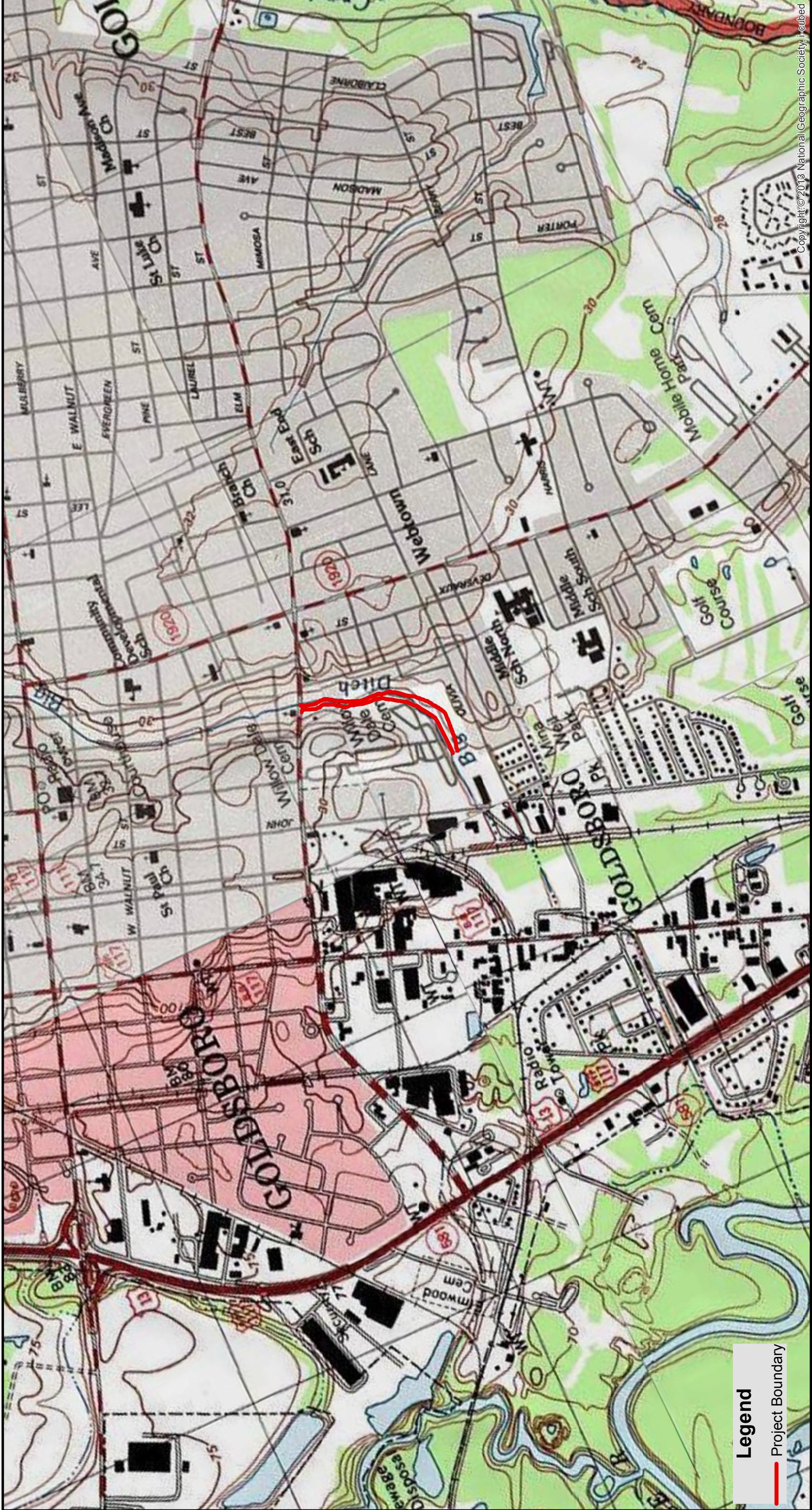
<b>Designer</b>  Primary project design POC	ICA Engineering 5121 Kingdom Way, Suite 100 Raleigh, North Carolina 27607 Kevin Williams (919) 851-6066
<b>Construction Contractor</b>  Construction Contractor POC	Carolina Environmental Contracting, Inc. Joanne Cheatham P.O. Box 1905 Mount Airy, NC 27030 (336) 320-3849
<b>Planting Contractor</b>  Planting Contractor POC	Carolina Sylvics, Inc. Mary-Margaret McKinney 908 Indian Trail Road Edenton, North Carolina 27932 (252) 482-8491
<b>Seeding Contractor</b>  Seeding Contractor POC	Carolina Environmental Contracting, Inc. Joanne Cheatham P.O. Box 1905 Mount Airy, NC 27030 (336) 320-3849
Seed Mix Sources	Green Resources – Triangle Office
Nursery Stock Suppliers	1) NC Division of Forest Resources 2) Native Roots Nursery
<b>Monitoring Performers</b>	ICA Engineering 5121 Kingdom Way, Suite 100 Raleigh, North Carolina 27607 Ben Furr (919) 851-6066
Stream Monitoring POC	ICA Engineering 5121 Kingdom Way, Suite 100 Raleigh, North Carolina 27607 Ben Furr (919) 851-6066
Vegetation Monitoring POC	ICA Engineering 5121 Kingdom Way, Suite 100 Raleigh, North Carolina 27607 Ben Furr (919) 851-6066

**Table 4. Project Attributes Table  
 UT Neuse (Big Ditch) (DMS Project ID No. 92682)**

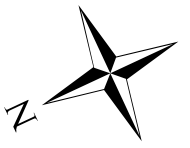
<b>Project Information</b>	
Project Name	UT Neuse (Big Ditch)
Project County	Wayne
Project Area (acres)	10
Project Coordinates	035° 22' 24" N, 077° 59' 40" W
<b>Project Watershed Summary Information</b>	
Physiographic Region	Southeastern Plains
Ecoregion	Southeastern Floodplains and Low Terraces
Project River Basin	Neuse
USGS 8-digit HUC	03020201
USGS 14-digit HUC	03020201200040
NCDWQ Subbasin	03-04-12
Project Drainage Area	2.27 sq. mi (at end of restoration reach)
Watershed Land Use	Forested = 20%   Cultivated Cropland = 5% Urban = 74%   Surface Water = 1%

<b>Reach Summary Information</b>	
<b>Parameters</b>	<b>UT Neuse (Big Ditch)</b>
Restored length	2,132
Drainage Area	2.27 sq. mi.
NCDWQ Index Number	27-(56)
NCDWQ Classification	WS-IV, NSW, C
Valley Type/Morphological Description	VIII/B/E5
Dominant Soil Series	Bibb/Norfolk loamy sand
Drainage Class	Bibb – poorly drained; Norfolk – well drained
Soil Hydric Status	Bibb – hydric; Norfolk – non-hydric
Slope	0.0017
FEMA Classification	AE & X
Native Vegetation Community	Coastal Plain Levee Forest

<b>Regulatory Considerations</b>			
<b>Regulation</b>	<b>Applicable</b>	<b>Resolved</b>	<b>Supporting Documentation</b>
Waters of the U.S. –Sections 404 and 401	Yes	Yes	Restoration Plan
Endangered Species Act	Yes	Yes	Restoration Plan
Historic Preservation Act	Yes	Yes	Restoration Plan
CZMA/CAMA	No	--	--
FEMA Floodplain Compliance	Yes	In Progress	LOMR
Essential Fisheries Habitat	No	--	--



Copyright © 2013 National Geographic Society. Digitized



**ICR** | **ICA**

## Project Vicinity Map

# Figure 1

**Legend**  
 Project Boundary



Appendix B. Visual Assessment Data

**Figures 2.0-2.4 Current Condition Plan View**





CURRENT CONDITIONS PLAN VIEW (CCPV)

YEAR 3

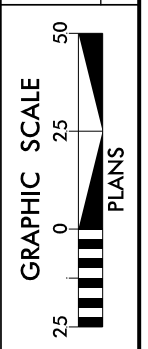


LEGEND	
	CONSERVATION EASEMENT
	TOP OF TERRACE
	THALWEG
	BANKFULL
	LIMITS OF DISTURBANCE
	MONITORING CROSS SECTION
	RIP RAP
	SOIL LIFT AREA
	LOG CROSS VANE
	LOG SILL
	LOG VANE W/SILL

YEAR 3 CONDITIONS	
	MODERATE EROSION
	MINOR EROSION
	INVASIVE POPULATION
	CRITERIA MET
	CRITERIA UNMET

**FOR ICA**

UT TO NEUSE (BIG DITCH)  
STREAM RESTORATION PROJECT  
WAYNE COUNTY, NORTH CAROLINA  
STA 10+00 - STA 16+00



DATE: 10-05-16

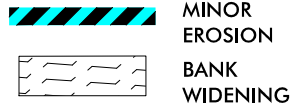
CCPV  
YEAR 4

FIGURE  
2.1

I:\2\2016\Stream\Pro\Monitoring Plans\Year 4\UTNeuse\_YR4\_psh\_2.1.dgn

YEAR 4 CONDITIONS

BANK/BED CONDITION



MINOR  
EROSION  
  
BANK  
WIDENING

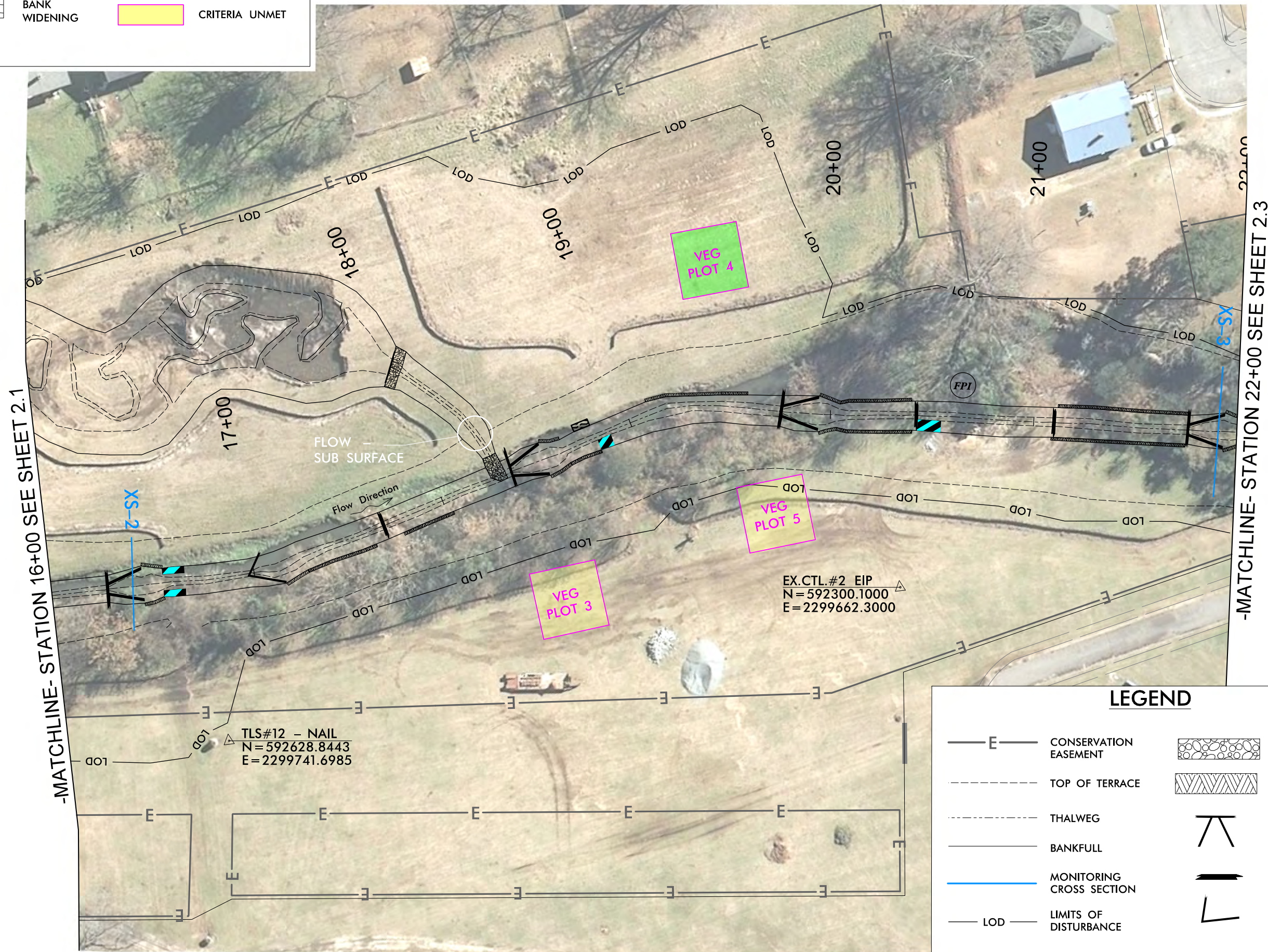
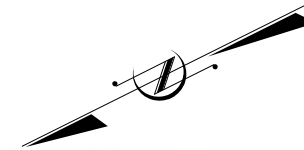
VEGETATION PLOT CONDITIONS



CRITERIA MET  
  
CRITERIA UNMET

CURRENT CONDITIONS PLAN VIEW (CCPV)

YEAR 3



-MATCHLINE- STATION 16+00 SEE SHEET 2.1

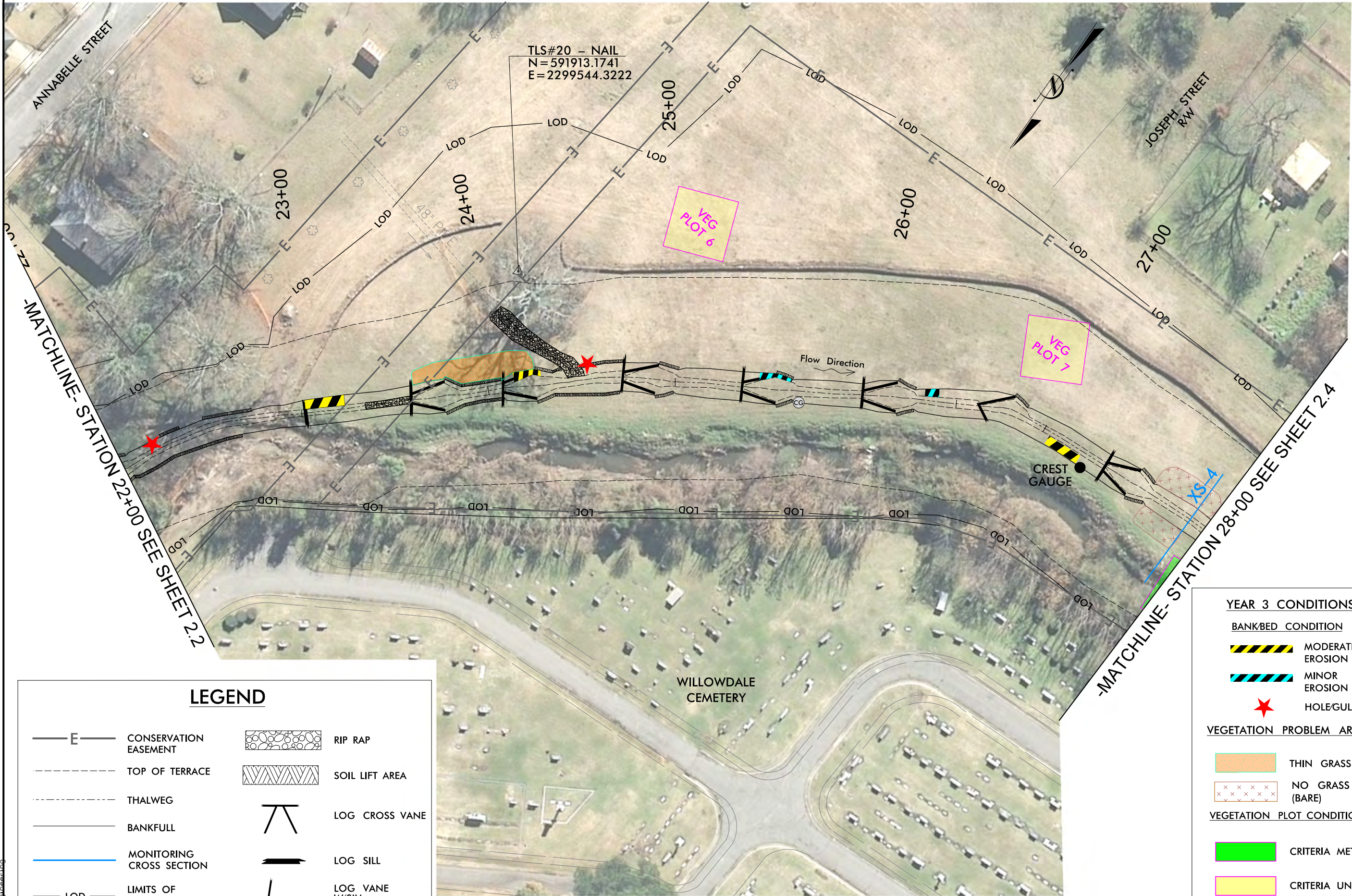
-MATCHLINE- STATION 22+00 SEE SHEET 2.3

LEGEND

— E —	CONSERVATION EASEMENT		RIP RAP
- - - -	TOP OF TERRACE		SOIL LIFT AREA
- · - · -	THALWEG		LOG CROSS VANE
—	BANKFULL		LOG SILL
—	MONITORING CROSS SECTION		LOG VANE W/SILL
— LOD —	LIMITS OF DISTURBANCE		

11/2/2016  
R:\stream\Pro\Monitoring Plans\Year 4\UTNeuse\_YR4\_psh\_2.2.dgn  
ICA Engineering

**CURRENT CONDITIONS PLAN VIEW (CCPV)**  
**YEAR 3**



TLS#20 - NAIL  
N = 591913.1741  
E = 2299544.3222

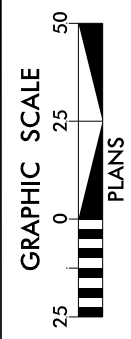
LEGEND	
	CONSERVATION EASEMENT
	TOP OF TERRACE
	THALWEG
	BANKFULL
	MONITORING CROSS SECTION
	LIMITS OF DISTURBANCE
	RIP RAP
	SOIL LIFT AREA
	LOG CROSS VANE
	LOG SILL
	LOG VANE W/SILL

YEAR 3 CONDITIONS	
<b>BANKBED CONDITION</b>	
	MODERATE EROSION
	MINOR EROSION
	HOLE/GULLY
<b>VEGETATION PROBLEM AREAS</b>	
	THIN GRASS
	NO GRASS (BARE)
<b>VEGETATION PLOT CONDITIONS</b>	
	CRITERIA MET
	CRITERIA UNMET

10/7/2016 S:\UT\Neuse\Stream\Proj\Monitoring\_Plans\Year 4\UTNeuse\_YR4\_psh\_2.3.dgn

**FOR ICA**

UT TO NEUSE (BIG DITCH)  
STREAM RESTORATION PROJECT  
WAYNE COUNTY, NORTH CAROLINA  
STA 22+00 - STA 28+00



DATE: 10-05-16

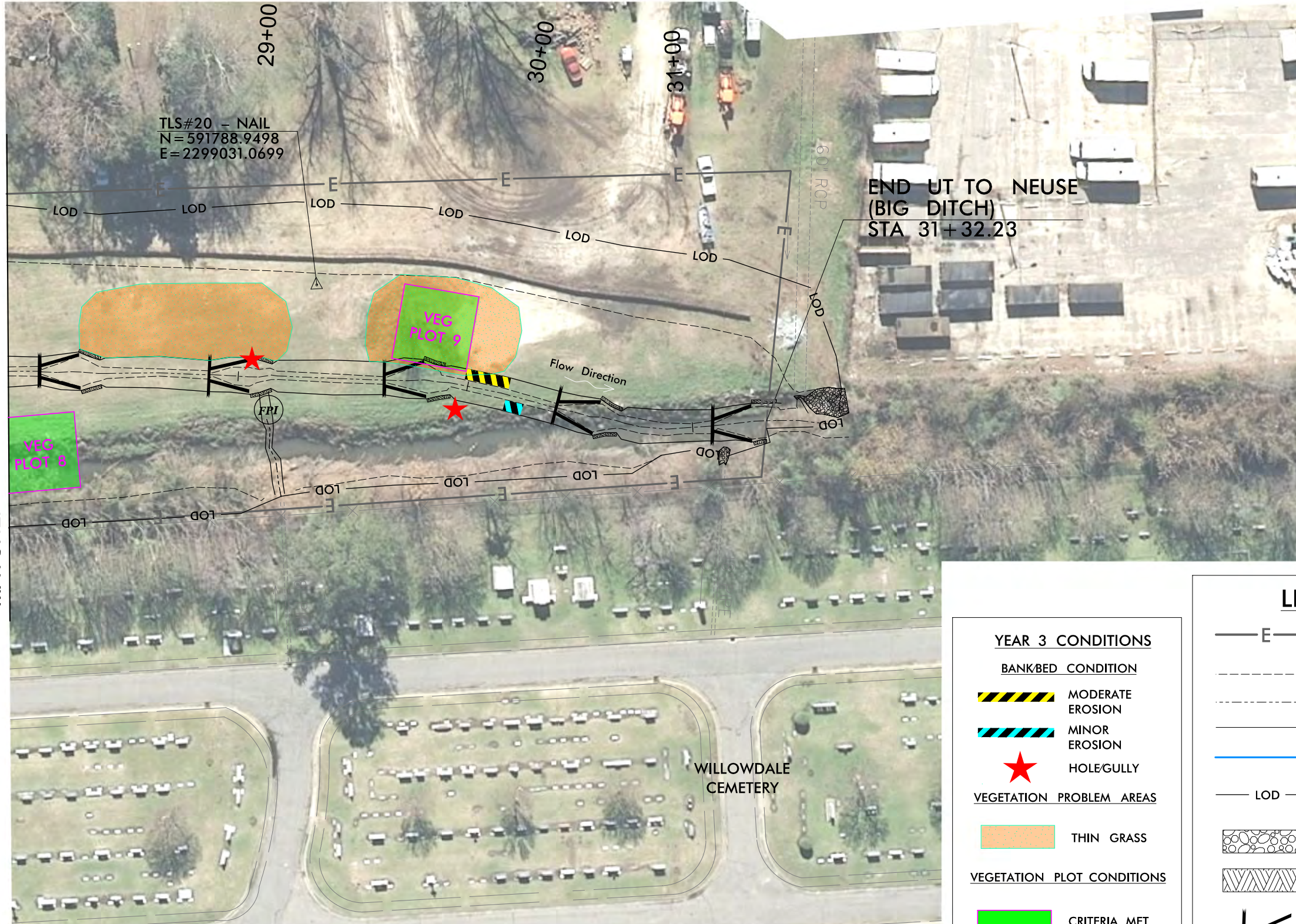
CCPV YEAR 4

FIGURE 2.3

**CURRENT CONDITIONS PLAN VIEW (CCPV)  
YEAR 3**



-MATCHLINE- STATION 28+00 SEE SHEET 2.3



**YEAR 3 CONDITIONS**

**BANK/BED CONDITION**

- MODERATE EROSION
- MINOR EROSION
- HOLE/GULLY

**VEGETATION PROBLEM AREAS**

- THIN GRASS

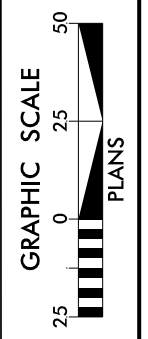
**VEGETATION PLOT CONDITIONS**

- CRITERIA MET
- CRITERIA UNMET

**LEGEND**

- CONSERVATION EASEMENT
- TOP OF TERRACE
- THALWEG
- BANKFULL
- MONITORING CROSS SECTION
- LIMITS OF DISTURBANCE
- RIP RAP
- SOIL LIFT AREA
- LOG CROSS VANE

UT TO NEUSE (BIG DITCH)  
STREAM RESTORATION PROJECT  
WAYNE COUNTY, NORTH CAROLINA  
STA 28+00 - STA 31+32.23



DATE: 10-05-16

CCPV  
YEAR 4

FIGURE  
2.4

10/7/2016 S:\UT\Neuse\Stream\Proj\Monitoring\_Plans\Year\_4\UTNeuse\_YR4\_psh\_2.4.dgn  
ICA Engineering

**FOR ICA**



**Table 5. Visual Stream Morphology Stability Assessment**  
 UT to Neuse River Site, 09-0776201  
 UT to Neuse River : 2,132 feet

Major Channel Category	Channel Sub-Category	Metric	Number Stable, Performing as Intended	Total Number in As-built	Number of Unstable Segments	Amount of Unstable Footage	% Stable, Performing as Intended	Number with Stabilizing Woody Vegetation	Footage with Stabilizing Woody Vegetation	Adjusted % for Stabilizing Woody Vegetation
1. Bed	1. Vertical Stability (Rifle and Run units)	1. Aggradation - Bar formation/growth sufficient to significantly deflect flow laterally (not to include point bars)			0	0	100%			
		2. Degradation - Evidence of downcutting			0	0	100%			
	2. Riffle Condition	1. Texture/Substrate - Riffle maintains coarser substrate	All	N/A			100%			
		3. Meander Pool Condition	1. Depth Sufficient	30	30			100%		
		2. Length appropriate	30	30			100%			
	4. Thalweg Position	1. Thalweg centering at upstream of meander bend (Run)	All	N/A			100%			
		2. Thalweg centering at downstream of meander (Glide)	All	N/A			100%			
2. Bank	1. Scoured/Eroding	Bank lacking vegetative cover resulting simply from poor growth and/or scour and erosion			18	292	92.69%	N/A	N/A	N/A
		Banks undercut/overhanging to the extent that mass wasting appears likely. Does NOT included undercuts that are modest, appear sustainable and are providing habitat.			0	0	100%	N/A	N/A	N/A
		Bank slumping, calving, or collapses			0	0	100%	N/A	N/A	N/A
		<b>Totals</b>			18	292	92.69%	N/A	N/A	N/A
3. Engineered Structures	1. Overall Integrity	Structures physically intact with no dislodged boulders or logs	28	28			100%			
		2. Grade Control	7	7			100%			
		2a. Piping	3	3			100%			
		3. Bank Protection	18	18			100%			
	4. Habitat	21	21			100%				

**Table 6. Vegetation Condition Assessment**  
 UT to Neuse River Site, 09-00776201  
 UT to Neuse River: 2,132 feet

Planted Acreage = 9.1						
Vegetation Category	Definitions	Mapping Threshold	CCPV Depiction	Number of Polygons	Combined Acreage	% of Planted Acreage
<b>1. Bare Areas</b>	Very limited ground cover (grass).	All bare or sparse areas were mapped.	See legend on CCPV (includes thin grass, no grass, and minor wash areas).	5	0.15	1.6
<b>2. Low Stem Density Areas</b>	Woody stem densities clearly below target levels based on MY3, 4, or 5 stem count criteria.	All areas were mapped.	Vegetation Plots 1, 2, 3, 5, 6, 7	6	0.14	1.40
<b>3. Areas of Poor Growth Rates or Vigor</b>	Areas with woody stems of a size class that are obviously small given the monitoring year.	None	N/A	N/A	N/A	N/A
Easement Acreage = 9.94 ac						
Vegetation Category	Definitions	Mapping Threshold	CCPV Depiction	Number of Polygons	Combined Acreage	% of Planted Acreage
<b>4. Invasive Areas of Concern</b>	Areas or points (if too small to render as polygons at map scale).	None	N/A	N/A	N/A	N/A
<b>5. Easement Encroachment Areas</b>	Areas or points (if too small to render as polygons at map scale).	None	N/A	N/A	N/A	N/A



Appendix C. Vegetation Plot Data

**Figures 3.0-3.13. Vegetation Plot Photos and Problem Area Photos**



**3.0 Vegetation Plot 1**



**3.1 Vegetation Plot 2**



**3.2 Vegetation Plot 3**



**3.3 Vegetation Plot 4**



**3.4 Vegetation Plot 5**



**3.5 Vegetation Plot 6**



**3.6 Vegetation Plot 7**



**3.7 Vegetation Plot 8**



**3.8 Vegetation Plot 9**



**3.9 Minor Erosion Station 12+00**



**3.10 Moderate Erosion Station**



**3.11 Moderate Erosion Station 14+50**



**3.12 Gully Station 24+75**



**3.13 Moderate Erosion Station 30+00**

**Table 7. Vegetation Plot Mitigation Success Summary**

<b>UT Neuse (Big Ditch) (DMS Project ID No. 92682)</b>						
<b>Plot ID</b>	<b>Community Type</b>	<b>Planting Zone ID</b>	<b>CVS Level</b>	<b>Planted Stems</b>	<b>Stems Per Acre</b>	<b>Survival Threshold Met?</b>
1	Coastal Plain Levee Forest	CPLF	II	4	162	No
2	Coastal Plain Levee Forest	CPLF	II	4	162	No
3	Coastal Plain Levee Forest	CPLF	II	2	81	No
4	Coastal Plain Levee Forest	CPLF	II	7	283	Yes
5	Coastal Plain Levee Forest	CPLF	II	7	283	No
6	Coastal Plain Levee Forest	CPLF	II	3	122	No
7	Coastal Plain Levee Forest	CPLF	II	6	243	No
8	Coastal Plain Levee Forest	CPLF	II	7	283	No*
9	Coastal Plain Levee Forest	CPLF	II	5	202	No*
<b>Average Stems Per Acre</b>					202	

\*Plots meet survival threshold when including natural recruits.

**Table 8. CVS Vegetation Metadata**

<b>Report Prepared By</b>	yvette t mariotte	
<b>Date Prepared</b>		8/25/2016 12:36
<b>database name</b>	cvS-eep-entrytool-v2.3.1.mdb	
<b>database location</b>	S:\UT_Neuse\Docs\Monitoring	
<b>computer name</b>	NC12154	
<b>file size</b>		60944384
<b>Metadata</b>	Description of database file, the report worksheets, and a summary of project(s) and project data.	
<b>Proj, planted</b>	Each project is listed with its PLANTED stems per acre, for each year. This excludes live stakes.	
<b>Proj, total stems</b>	Each project is listed with its TOTAL stems per acre, for each year. This includes live stakes, all planted stems, and all natural/volunteer stems.	
<b>Plots</b>	List of plots surveyed with location and summary data (live stems, dead stems, missing, etc.).	
<b>Vigor</b>	Frequency distribution of vigor classes for stems for all plots.	
<b>Vigor by Spp</b>	Frequency distribution of vigor classes listed by species.	
<b>Damage</b>	List of most frequent damage classes with number of occurrences and percent of total stems impacted by each.	
<b>Damage by Spp</b>	Damage values tallied by type for each species.	
<b>Damage by Plot</b>	Damage values tallied by type for each plot.	
<b>Planted Stems by Plot and Spp</b>	A matrix of the count of PLANTED living stems of each species for each plot; dead and missing stems are excluded.	
<b>ALL Stems by Plot and spp</b>	A matrix of the count of total living stems of each species (planted and natural volunteers combined) for each plot; dead and missing stems are excluded.	
<b>Project Code</b>		92682
<b>project Name</b>	UT NEUSE (BIG DITCH)	
<b>Description</b>	STREAM AND RIPARIAN BUFFER MITIGATION	
<b>River Basin</b>	Neuse	
<b>length(ft)</b>		2127
<b>stream-to-edge width (ft)</b>		80
<b>area (sq m)</b>		31613.56
<b>Required Plots (calculated)</b>		9
<b>Sampled Plots</b>		9





Table 9. Stem Count Total and Planted by Plot and Species

EEP Project Code 92682. Project Name: UT NEUSE (BIG DITCH)																							
		Current Plot Data (MY3 2016)																					
Scientific Name	Common Name	Type	92682-ICA-0001			92682-ICA-0002			92682-ICA-0003			92682-ICA-0004			92682-ICA-0005			92682-ICA-0006			92682-ICA-0007		
			PnoLS	P-all	T	PnoLS	P-all	T	PnoLS	P-all	T	PnoLS	P-all	T	PnoLS	P-all	T	PnoLS	P-all	T	PnoLS	P-all	T
Acer rubrum	red maple	Tree																					
Amelanchier	serviceberry	Tree																					
Betula nigra	river birch	Tree	1	1	1							1	1	1				1	1	1	1	1	1
Carya	hickory	Tree																					
Carya alba	mockernut hickory	Tree				1	1	1															
Chionanthus virginicus	white fringetree	Shrub	1	1	1																		
Cornus amomum	silky dogwood	Shrub																					
Fraxinus pennsylvanica	green ash	Tree				1	1	1	1	1	1												
Liquidambar styraciflua	sweetgum	Tree												4	4	4							
Liriodendron tulipifera	tuliptree	Tree				1	1	1	1	1	1			1	1	1				1	1	1	
Ostrya	hophornbean	Tree																					
Pinus taeda	loblolly pine	Tree																					
Platanus occidentalis	American sycamore	Tree										1	1	1									
Quercus falcata	southern red oak	Tree																		1	1	1	
Quercus laurifolia	laurel oak	Tree	1	1	1																		
Quercus michauxii	swamp chestnut oak	Tree																					
Quercus myrtifolia	myrtle oak	Shrub																					
Quercus nigra	water oak	Tree																		1	1	1	
Quercus pagoda	cherrybark oak	Tree				1	1	1				2	2	2				1	1	1	1	1	
Quercus phellos	willow oak	Tree																		1	1	1	
Quercus rubra	northern red oak	Tree	1	1	1							2	2	3	2	2	2	1	1	1			
Salix nigra	black willow	Tree										1	1	1									
	<b>Stem count</b>		4	4	5	4	4	4	2	2	2	7	7	8	7	7	7	3	3	3	6	6	6
	<b>size (ACRES)</b>		0.02			0.02			0.02			0.02			0.02			0.02			0.02		
	<b>Species count</b>		4	4	5	4	4	4	2	2	2	5	5	5	3	3	3	3	3	3	6	6	6
	<b>Stems per ACRE</b>		161.9	161.9	202.4	161.9	161.9	161.9	80.97	80.97	80.97	283.4	283.4	323.9	283.4	283.4	283.4	121.5	121.5	121.5	242.9	242.9	242.9

**Color for Density**

- Exceeds requirements by more than 10%
- Exceeds requirements, but by less than 10%
- Fails to meet requirements, by less than 10%
- Fails to meet requirements by more than 10%

- PnoLS = Planted excluding livestakes
- P-all = Planting including livestakes
- T = All planted and natural recruits including livestakes
- T includes natural recruits



Table 9. Continued

EEP Project Code 92682. Project Name: UT NEUSE (BIG DITCH)

Scientific Name	Common Name	Type	92682-ICA-0008									92682-ICA-0009									MY3 (2016)			MY2 (2015)			MY1 (2014)			MY0 (2014)								
			PnoLS			P-all			T			PnoLS			P-all			T			PnoLS			P-all			T			PnoLS			P-all			T		
Acer rubrum	red maple	Tree												0.22																								
Amelanchier	serviceberry	Tree																									0.11	0.11	0.11									
Betula nigra	river birch	Tree	1	1	1				1	0.67	0.67	0.67	0.33	0.33	0.44	0.67	0.67	0.67	0.89	0.89	0.89																	
Carya	hickory	Tree																					0.33															
Carya alba	mockernut hickory	Tree	2	2	3							0.33	0.33	0.44	0.33	0.33	0.44	1.00	1.00	1.00	1.44	1.44	1.44															
Chionanthus virginicus	white fringetree	Shrub										0.11	0.11	0.11	0.11	0.11	0.11				0.11	0.11	0.11															
Cornus amomum	silky dogwood	Shrub															0.56																					
Fraxinus pennsylvanica	green ash	Tree										0.22	0.22	0.22	0.11	0.11	0.33	0.33	0.33	0.33	0.33	0.33	0.33															
Liquidambar styraciflua	sweetgum	Tree							2	0.44	0.44	0.67						0.11																				
Liriodendron tulipifera	tuliptree	Tree										0.44	0.44	0.44	0.78	0.78	1.00	1.56	1.56	1.56	1.89	1.89	1.89															
Ostrya	hophornbean	Tree																									0.11	0.11	0.11									
Pinus taeda	loblolly pine	Tree				5			1			0.67																										
Platanus occidentalis	American sycamore	Tree										0.11	0.11	0.11	0.33	0.33	0.33	0.33	0.33	0.44	0.56	0.56	0.56															
Quercus falcata	southern red oak	Tree										0.11	0.11	0.22																								
Quercus laurifolia	laurel oak	Tree	1	1	1							0.22	0.22	0.22																								
Quercus michauxii	swamp chestnut oak	Tree							1	1	1	0.11	0.11	0.11																								
Quercus myrtifolia	myrtle oak	Shrub																																				
Quercus nigra	water oak	Tree							3	3	3	0.44	0.44	0.44	0.44	0.44	0.44	0.44	0.44	0.44	0.89	0.89	0.89															
Quercus pagoda	cherrybark oak	Tree	1	1	1							0.89	0.89	0.89	0.67	0.67	0.78	0.89	0.89	0.89	1.00	1.00	1.00															
Quercus phellos	willow oak	Tree							1	1	1	0.89	0.89	1.00	0.22	0.22	0.56	0.22	0.22	0.22																		
Quercus rubra	northern red oak	Tree	2	2	2							0.89	0.89	1.00	1.33	1.33	1.33	1.78	1.78	1.78	2.33	2.33	2.33															
Salix nigra	black willow	Tree										0.11	0.11	0.11	0.11	0.11	0.11	0.11	0.11	0.11																		
<b>Stem count</b>			7	7	15	5	5	9	5.00	5.00	6.55	4.78	4.78	6.78	7.33	7.33	7.78	9.67	9.67	9.67																		
<b>size (ACRES)</b>			0.02			0.02			0.02			0.02			0.02			0.02																				
<b>Species count</b>			5	5	7	3	3	6	15	15	16	11	11	14	10	10	11	11	11	11																		
<b>Stems per ACRE</b>			283.4	283.4	607.3	202.4	202.4	364.4	202.4	202.4	327.5	238.9	238.9	338.9	366.7	366.7	388.9	483.33	483.33	483.3																		

**Color for Density**

- Exceeds requirements by more than 10%
- Exceeds requirements, but by less than 10%
- Fails to meet requirements, by less than 10%
- Fails to meet requirements by more than 10%

- PnoLS = Planted excluding livestakes
- P-all = Planting including livestakes
- T = All planted and natural recruits including livestakes
- T includes natural recruits



Appendix D. Stream Survey Data  
**Figure 4.0-4.3 Cross Section Plots**

Figure 4.0

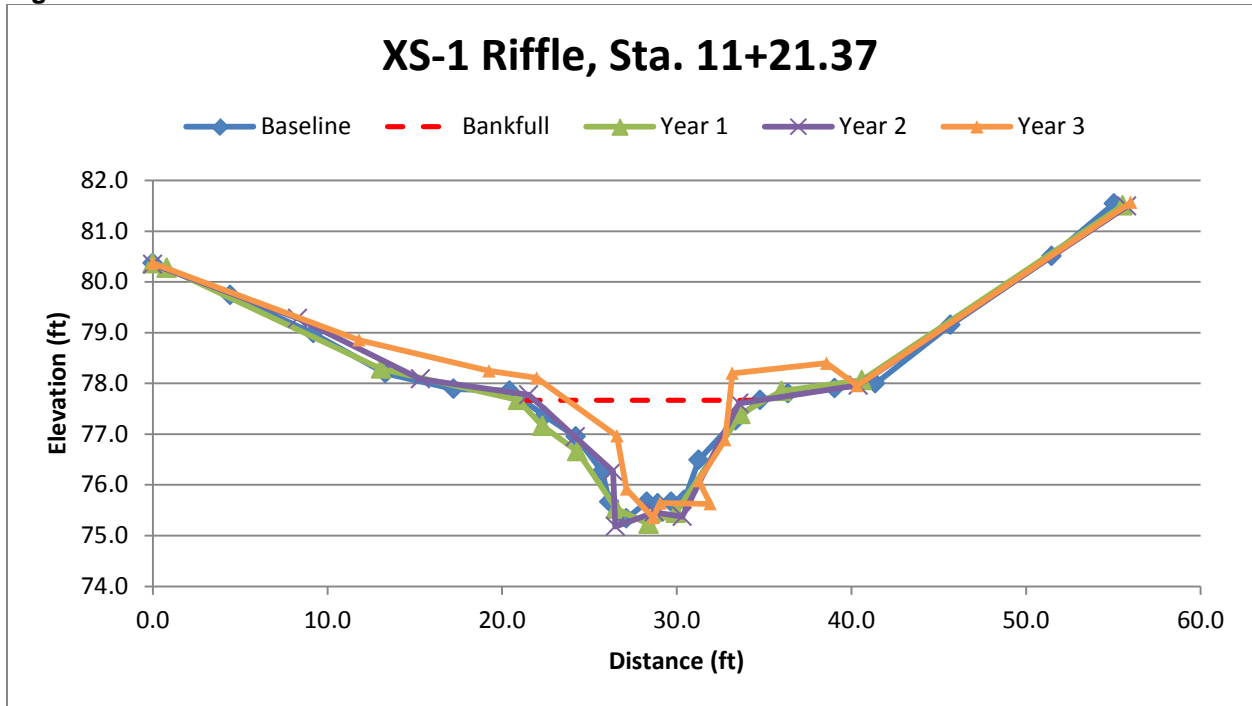


Figure 4.1

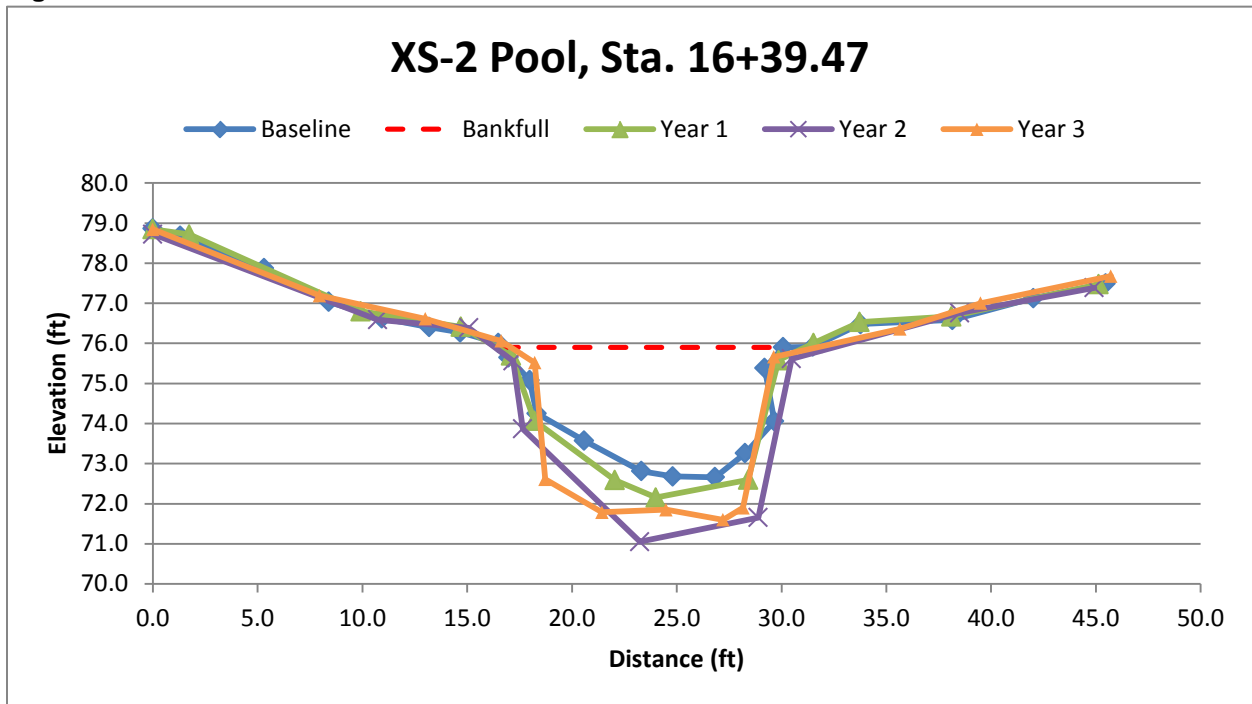


Figure 4.2

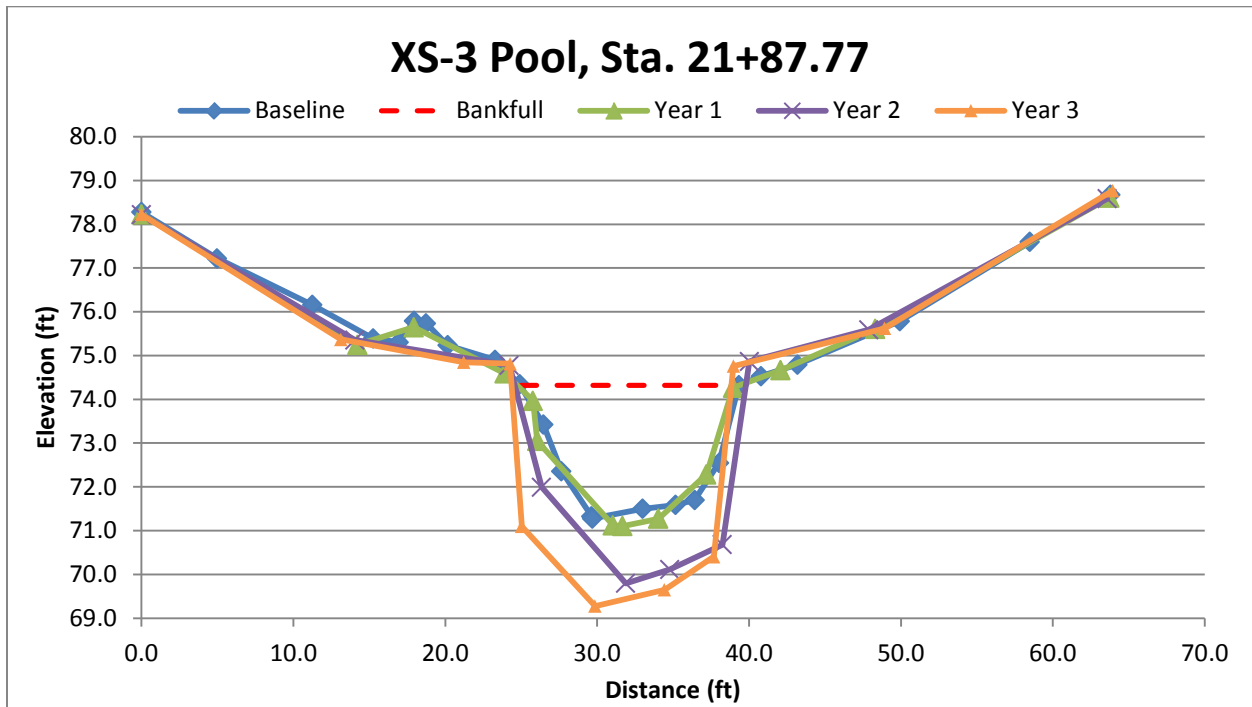
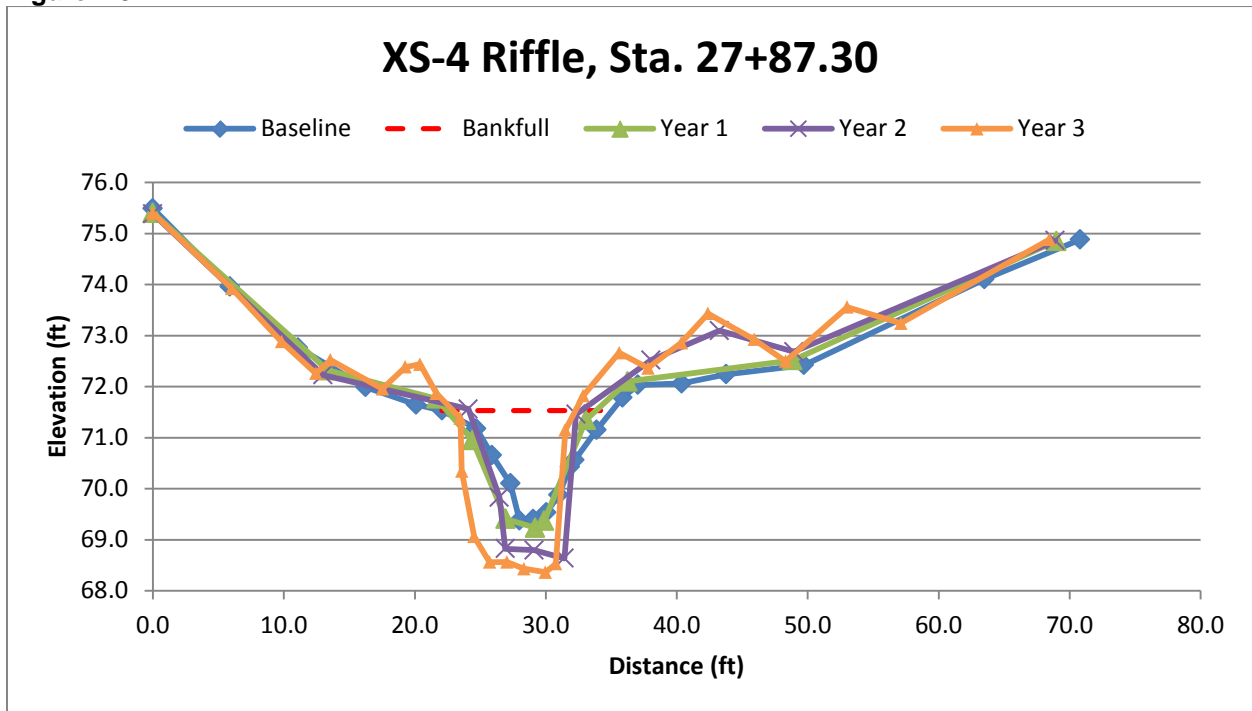


Figure 4.3



**Figure 5.1-5.2 Longitudinal Profile Plot**



Figure 5.1 UT Neuse - Longitudinal Profile

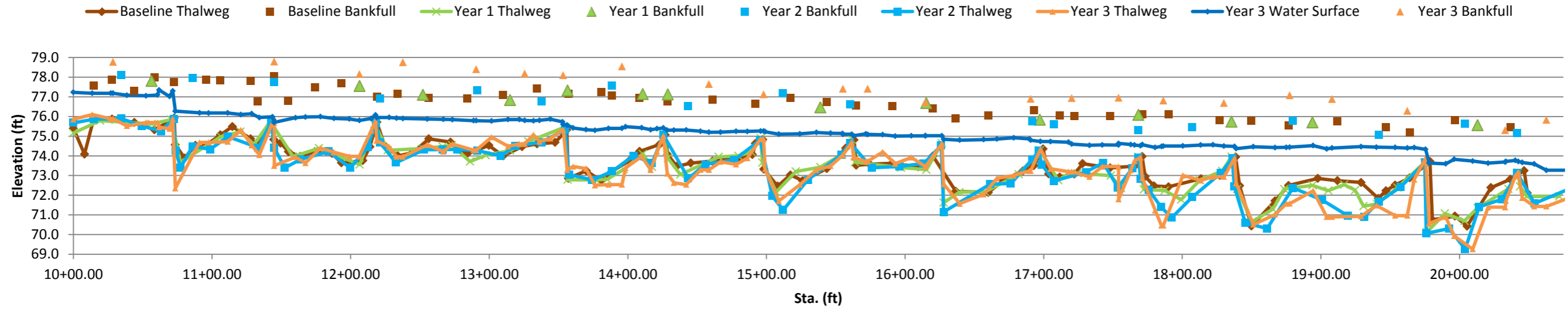
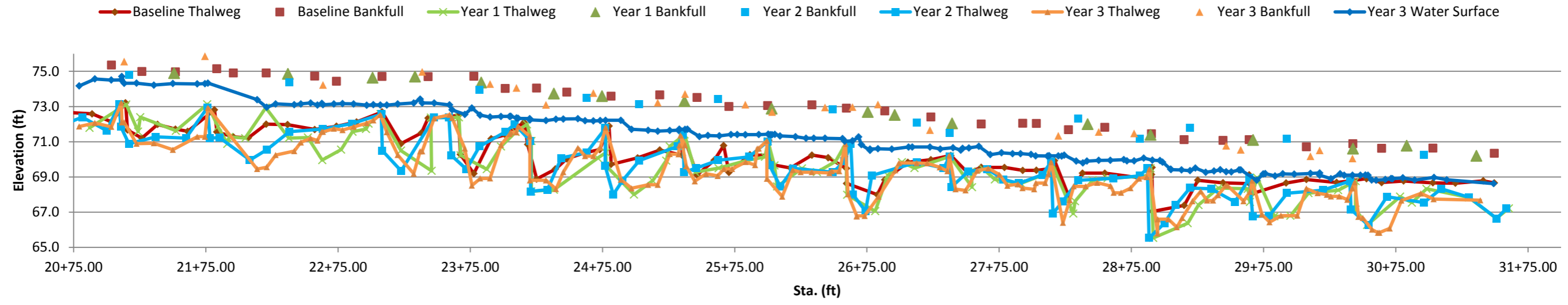


Figure 5.2 UT Neuse - Longitudinal Profile





**Table 10. Baseline Stream Data Summary**  
**UT Neuse (Big Ditch), DMS Project ID No. 92682**  
**UT Neuse: 2,132 LF**

Parameter	Regional Curve	Pre-Existing Condition	Reference - Johnson Mill	Design	As-built/Baseline					
<b>Dimension and Substrate - Riffle</b>	Eq.	Mean	Mean	Mean	Min	Mean	Med	Max	SD	n
Bankfull Width (ft)	14.20	8.90	21.20	14.00	13.00	13.30	13.30	13.60	0.42	2
Floodprone Width (ft)		16.60	34.90	36.00	46.70	49.85	49.85	53.00	4.45	2
Bankfull Mean Depth (ft)	1.60	1.01	2.25	1.17	1.00	1.10	1.10	1.20	0.14	2
Bankfull Max Depth (ft)		1.43	2.42	1.75	2.20	2.25	2.25	2.30	0.07	2
Bankfull Cross Sectional Area (ft <sup>2</sup> )	23.30	9.02	47.59	16.30	13.00	14.30	14.30	15.60	1.84	2
Width/Depth Ratio		8.90	9.40	12.00	11.80	12.40	12.40	13.00	0.85	2
Entrenchment Ratio		1.85	1.65	2.60	3.40	3.75	3.75	4.10	0.49	2
Bank Height Ratio		5.80	1.00	1.00	1.00	1.00	1.00	1.00	0.00	2
d50 (mm)		sand	sand	sand						
<b>Profile</b>										
Riffle Length (ft)					38.64	59.42	60.26	82.92	16.99	8
Riffle Slope (ft/ft)		0.0100	0.0010	0.0021	0.0014	0.0021	0.0020	0.0034	0.0007	8
Pool Length (ft)					28.34	48.34	52.08	73.96	12.02	25
Pool Max depth (ft)		1.50	3.56	2.33	2.78	3.86	3.79	5.14	0.64	25
Pool Spacing (ft)		23.14-86.74	91.07-129.97	56.0-84.0	22.39	79.14	73.37	155.21	29.55	24
Pool Cross Sectional Area (ft <sup>2</sup> )					31.10	31.15	31.15	31.20	0.07	2
<b>Pattern</b>										
Channel Beltwidth (ft)		Channelized	50-1500	28-980						
Radius of Curvature (ft)		Channelized	43-235	42-70						
Rc: Bankfull Width (ft/ft)		Channelized	2.0-11.1	3.0-5.0						
Meander Wavelength (ft)		Channelized	250-400	140-280						
Meander Width Ratio		Channelized	2.36-70.85	2.0-70.0						
<b>Substrate, bed and transport parameters</b>										
Ri% / P%					36%/46%					
SC% / Sa% / G% / C% / B% / Be%										
d16 / d35 / d50 / d84 / d95 / d <sub>10</sub> <sup>95</sup> / d <sub>50</sub> <sup>95</sup> (mm)										
Reach Shear Stress (competency) lb/ft <sup>2</sup>		0.282	0.116	0.113						
Max part size (mm) mobilized at bankfull										
Unit Stream Power (transport capacity) lbs/ft.s		0.964	0.200	0.193				0.223		
<b>Additional Reach Parameters</b>										
Drainage Area (SM)		2.05	13.50	2.05						
Impervious cover estimate (%)										
Rosgen Classification		G/B 5	B5	B/E 5	E5					
Bankfull Velocity (fps)			1.50	1.70	1.75					
Bankfull Discharge (cfs)		25.00	80.90	25.00	25.00					
Valley length (ft)		2106		2106.00	2106.00					
Channel Thalweg length (ft)		2113		2128.00	2150.00					
Sinuosity (ft)		1.00	1.10	1.01	1.02					
Water Surface Slope (Channel) (ft/ft)		0.0055	0.0010	0.0017	0.0044					
BF slope (ft/ft)				0.0017	0.0044					
Bankfull Floodplain Area (acres)										
Proportion over wide (%)										
Entrenchment Class (ER Range)										
Incision Class (BHR Range)										
BEHI VL% / L% / M% / H% / VH% / E%										
Channel Stability or Habitat Metric										
Biological or Other										



**Table 12. Monitoring Data - Stream Reach Data Summary**  
**UT to Neuse River Site, DMS Project No. 92682**  
**UT Neuse: 2,132 LF**

Parameter	Baseline			MY-1			MY-2			MY-3			MY-4			MY-5		
	Min	Mean	Max	Min	Mean	Max	Min	Mean	Max	Min	Mean	Max	Min	Mean	Max	Min	Mean	Max
<b>Dimension and substrate - Riffle only</b>																		
Bankfull Width (ft)	13.00	13.30	13.60	13.24	13.69	14.14	8.09	9.82	11.54	8.94	9.13	9.32						
Floodprone Width (ft)	46.70	49.85	53.00	47.68	53.58	59.47	47.07	53.06	59.04	45.90	55.08	64.26						
Bankfull Mean Depth (ft)	1.00	1.10	1.20	1.28	1.29	1.30	1.33	1.67	2.00	1.30	1.87	2.44						
Bankfull Max Depth (ft)	2.20	2.25	2.30	2.44	2.49	2.53	2.43	2.63	2.82	2.31	2.74	3.16						
Bankfull Cross Sectional Area (ft <sup>2</sup> )	13.00	14.30	15.60	17.22	17.66	18.09	15.37	15.79	16.20	12.11	16.96	21.80						
Bankfull Width/Depth Ratio	11.80	12.40	13.00	10.18	10.62	11.05	4.04	6.36	8.68	3.66	5.42	7.17						
Bankfull Entrenchment Ratio	3.40	3.75	4.10	3.37	3.93	4.49	4.08	5.69	7.30	4.93	6.06	7.19						
Bankfull Bank Height Ratio	1.00	1.00	1.00	1.00	1.00	1.00	1.00	1.00	1.00	1.00	1.06	1.11						
<b>Profile</b>																		
Riffle Length (ft)	38.64	59.42	82.92	11.51	18.03	50.98	19.83	30.74	41.18	5.92	28.20	73.01						
Riffle Slope (ft/ft)	0.0014	0.0021	0.0034	0.01	0.02	0.02	0.01	0.04	0.07	0.01	0.01	0.02						
Pool Length (ft)	28.34	48.34	73.96	42.65	74.83	139.02	27.97	56.61	109.40	60.19	74.91	139.12						
Pool Max Depth (ft)	2.78	3.86	5.14	1.17	2.64	4.10	4.56	4.82	5.07	3.53	4.78	6.12						
Pool Spacing (ft)	22.39	79.14	155.21	47.39	79.56	178.52	43.76	70.24	125.53	67.09	81.96	140.11						
<b>Pattern</b>																		
Channel Beltwidth (ft)	36.50	48.58	79.96															
Radius of Curvature (ft)	143.00	160.16	171.56															
Rc:Bankfull Width (ft/ft)	14.79	18.06	23.16															
Meander Wavelength (ft)	201.80	263.54	346.54															
Meander Width Ratio	2.41	3.33	5.34															
<b>Additional Reach Parameters</b>																		
Rosgen Classification	E5			E5			E5			E5								
Channel Thalweg Length (ft)	2,161			2,144			2,132			2,149								
Sinuosity (ft)	1.03			1.03			1.03			1.03								
Water Surface Slope (Channel) (ft/ft)	0.00442			0.00348			0.0035			0.0033								
BF slope (ft/ft)	0.00436			0.00357			0.0037			0.0034								
<sup>3</sup> Ri% / P%	36 / 64			32 / 68			42 / 58			36/64								
<sup>3</sup> SC% / Sa% / G% / C% / B% / Be%																		
<sup>3</sup> d16 / d35 / d50 / d84 / d95																		
<sup>2</sup> % of Reach with Eroding Banks																		
Channel Stability or Habitat Metric																		
Biological or Other																		

Shaded cells indicate that these will typically not be filled in.

1 = The distributions for these parameters can include information from both the cross-section surveys and the longitudinal profile.

2 = Proportion of reach exhibiting banks that are eroding based on the visual survey from visual assessment table

3 = Riffle, Run, Pool, Glide, Step; Silt/Clay, Sand, Gravel, Cobble, Boulder, Bedrock; dip = max pave, disp = max subpave

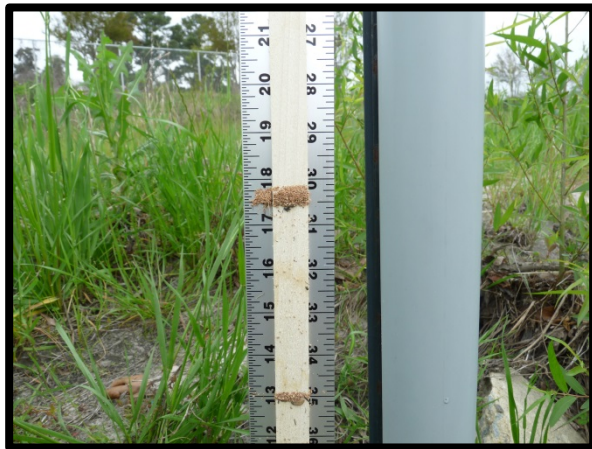
4 = Of value/needed only if the n exceeds 3

Appendix E. Hydrologic Data

**Table 13. Verification of Bankfull Events**

Date	Crest Gauge Info		Gauge Reading (ft)	Gauge Elevation (ft)	Crest Elevation (ft)	Bankfull Elevation (ft)	Height above Bankfull (ft)	Photo
	Site	Sta.						
4/28/2014	XS 4	26+00	1.46	70.8	72.26	71.53	0.73	6.1
8/20/2014	XS 4	26+00	3.04	70.8	73.84	71.53	2.31	6.2
3/13/2015	XS 4	26+00	Visual	Visual	Visual	Debris lines above bankfull	Debris lines above bankfull	6.3
9/02/2015	XS 4	26+00	3.77	70.8	74.57	71.53	3.04	6.4
2/26/2016	XS 4	26+00	Visual	Visual	Visual	Crest gauge damaged by high flow	Crest gauge damaged by high flow	6.5
8/11/2016	XS 4	26+00	3.77	70.8	74.57	71.53	3.04	6.6

**Figure 6.1–6.6 Crest Gauge Photos**



**Figure 6.1 Crest Gauge 8/20/2014**



**Figure 6.2 Crest Gauge 4/28/2014**



**Figure 6.3 Crest Gauge 3/13/2015**



**Figure 6.4 Crest Gauge 9/02/2015**



**Figure 6.5 Damaged Crest Gauge 2/26/2016**



**Figure 6.6 Crest Gauge 8/11/2016**