

# **ANNUAL MONITORING REPORT YEAR 3 (2007)**

**(Contract Number D04009-2)**

## **WALNUT CREEK BUFFER RESTORATION SITE WAYNE COUNTY, NORTH CAROLINA**

**Prepared for:**

**NORTH CAROLINA DEPARTMENT OF ENVIRONMENT AND NATURAL RESOURCES  
ECOSYSTEM ENHANCEMENT PROGRAM  
RALEIGH, NORTH CAROLINA**



**Prepared by:**



**Natural Resource  
Restoration & Conservation**

**Restoration Systems, L.L.C.  
1101 Haynes Street, Suite 107  
Raleigh, North Carolina 27604**



**and**

**ARCADIS G&M of North Carolina, Inc.  
801 Corporate Center Drive, Suite 300  
Raleigh, North Carolina 27607**

**October 2007**

## EXECUTIVE SUMMARY

Restoration Systems, LLC (Restoration Systems) has completed riparian buffer restoration at the Walnut Creek Mitigation Site (hereinafter referred to as the "Site") to assist the North Carolina Ecosystem Enhancement Program (EEP) in fulfilling restoration goals in the region. The Site is located approximately one mile east of Goldsboro, in Wayne County. This portion of Wayne County is located in the western portion of Neuse River Basin Cataloging Unit 03020202. The Site encompasses 25 acres of buffer restoration immediately adjacent to Walnut Creek and one of its unnamed tributaries and was completed in June 2005.

Prior to restoration, Site land use consisted primarily of agricultural fields utilized for row crop production in addition to a small area of abandoned pasture. Site ditch banks were characterized by little or no vegetation and tilling took place within one to two feet of the top of bank. Excessive runoff during storms contributed to nutrient, pesticide and sediment runoff.

Site reforestation, consisting of a Nonriverine Wet Hardwood Forest community, was implemented within the entire 25-acre Site. The primary goals of this buffer restoration project focused on reforestation of the Site with native tree and shrub species to:

1. Intercept and assimilate nutrient, pesticide, and sediment runoff from agricultural activities into the headwaters of Walnut Creek and ultimately into the Neuse River.
2. To convert cropland within the project area into riparian forest to reestablish forest functions.
3. To improve wildlife habitat quantity and quality.
4. To augment efforts by Wayne County and the City of Goldsboro to establish buffer areas around Seymour Johnson Air Force Base.

Year 3 monitoring was conducted during October 2007 to determine the density of surviving trees and shrubs in eight sampling transects. The mean density of vegetation in the 8 plots at the Site was 2,507 stems/acre, well above the required 320 stems/acre. All individual vegetation plots met success criteria and all except one exhibited good species diversity with 5 to 14 planted species present within each plot.

**TABLE OF CONTENTS**

1.0 INTRODUCTION ..... 1  
2.0 VEGETATION MONITORING PROGRAM ..... 6  
    2.1 Vegetation Success Criteria ..... 9  
    2.2 Vegetation Sampling Results and Comparison to Success Criteria ..... 10  
3.0 CONCLUSIONS..... 12  
4.0 REFERENCES ..... 13

**LIST OF TABLES**

Table 1. Planted Tree and Shrub Species..... 9  
Table 2. 2007 Woody Vegetation Monitoring Data and Results ..... 11  
Table 3. 2007 Herbaceous Vegetation Monitoring Data and Results ..... 12

**LIST OF FIGURES**

Figure 1. Cataloging Unit 02030202 .....2  
Figure 2. Location of Walnut Creek Mitigation Site .....3  
Figure 3. Topographic Map of Walnut Creek Mitigation Site.....4  
Figure 4. Soils Map of Walnut Creek Mitigation Site .....5  
Figure 5. Location of Sampling Transects in Part 1 .....7  
Figure 6. Location of Sampling Transects in Part 2 .....8

**APPENDICES**

Appendix A. Vegetation Plot Photographs

**WALNUT CREEK MITIGATION SITE  
ANNUAL MONITORING REPORT  
YEAR 3 (2007)  
WAYNE COUNTY, NORTH CAROLINA**

## **1.0 INTRODUCTION**

Restoration Systems, LLC (Restoration Systems) has completed riparian buffer restoration at the Walnut Creek Mitigation Site (hereinafter referred to as the "Site") to assist the North Carolina Ecosystem Enhancement Program (EEP) in fulfilling restoration goals in the region. The Site is situated within the western portion of Cataloging Unit 03020202 (Hydrologic Unit 03020202010040) of the Neuse River Basin (Figure 1) and is located approximately one mile east of Goldsboro, in Wayne County (Figure 2). The Site conservation easement encompasses 27.9 acres immediately adjacent to Walnut Creek and an unnamed tributary to it within sub-basin 03-04-02 of the Neuse River Basin. All streams within or adjacent to the Site are depicted by blue lines on the USGS Southeast Goldsboro (1:24,000) topographic map (Figure 3). The soils of the Site are mostly poorly drained wet flats comprised of the Rains, Torhunta, and Weston series (Figure 4).

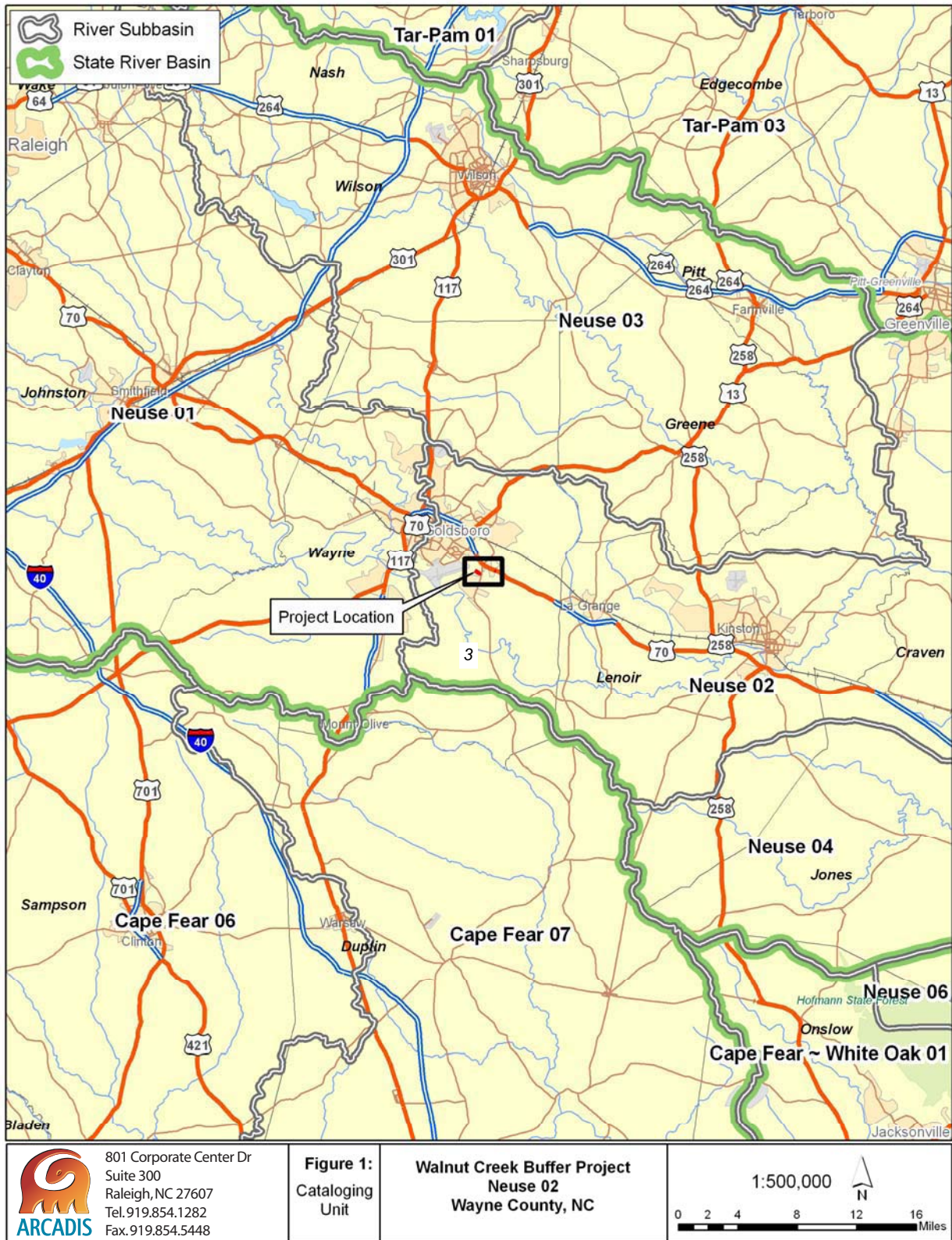
A Restoration Plan was completed for the Site in December, 2006. The plan outlined methods designed to reforest the entire Site with native species. Prior to implementation, Part 1 of the Site (approximately 23.5 acres) was composed of row-crop agriculture. Part 2, approximately 1 mile to the east, consisted of about 1.5 acres of abandoned pasture. The following implemented activities provide 25 Buffer Mitigation Units as requested under the EEP Request for Proposal (RFP) 16-D04009 dated December 31, 2003:

1. Restoration of 25 acres of riparian buffer through planting with native forest species.
2. Protection of the Site in perpetuity with a conservation easement which is held by the State of North Carolina.

The primary goals of this buffer restoration project focused on reforestation of the Site with native tree and shrub species to:

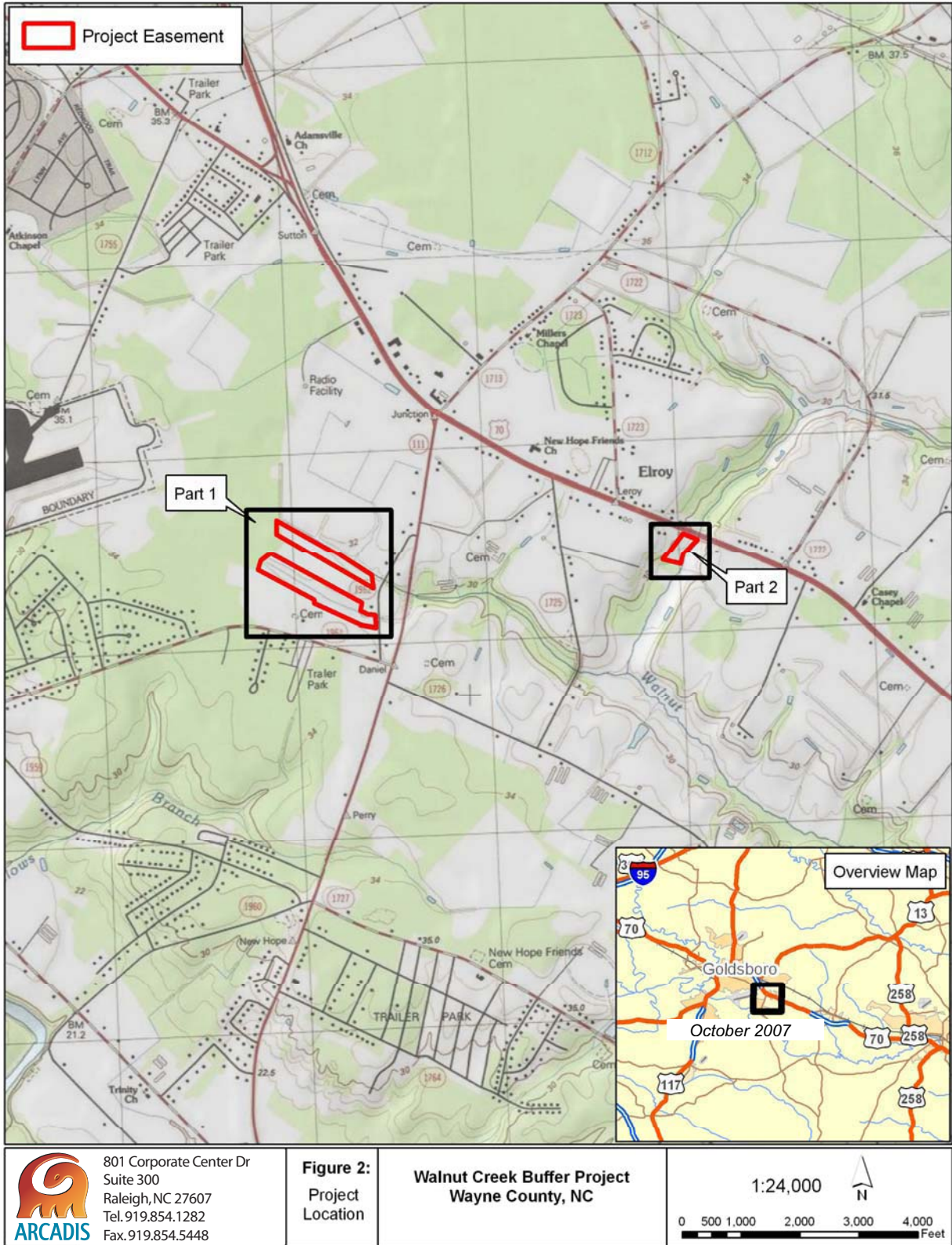
1. Intercept and assimilate nutrient, pesticide, and sediment runoff from agricultural activities into the headwaters of Walnut Creek and ultimately into the Neuse River.
2. To convert cropland within the project area into riparian forest to reestablish forest functions.
3. To improve wildlife habitat quantity and quality.
4. To augment efforts by Wayne County and the City of Goldsboro to establish buffer areas around Seymour Johnson Air Force Base.


The primary goals were accomplished by removing non-point sources of pollution associated with agricultural production, including (a) the cessation of broadcasting fertilizer, pesticides, and other agricultural materials into and adjacent to Site streams and (b) providing a vegetative buffer adjacent to streams to treat surface runoff.



**Figure 1 Cataloging Unit 02030202**






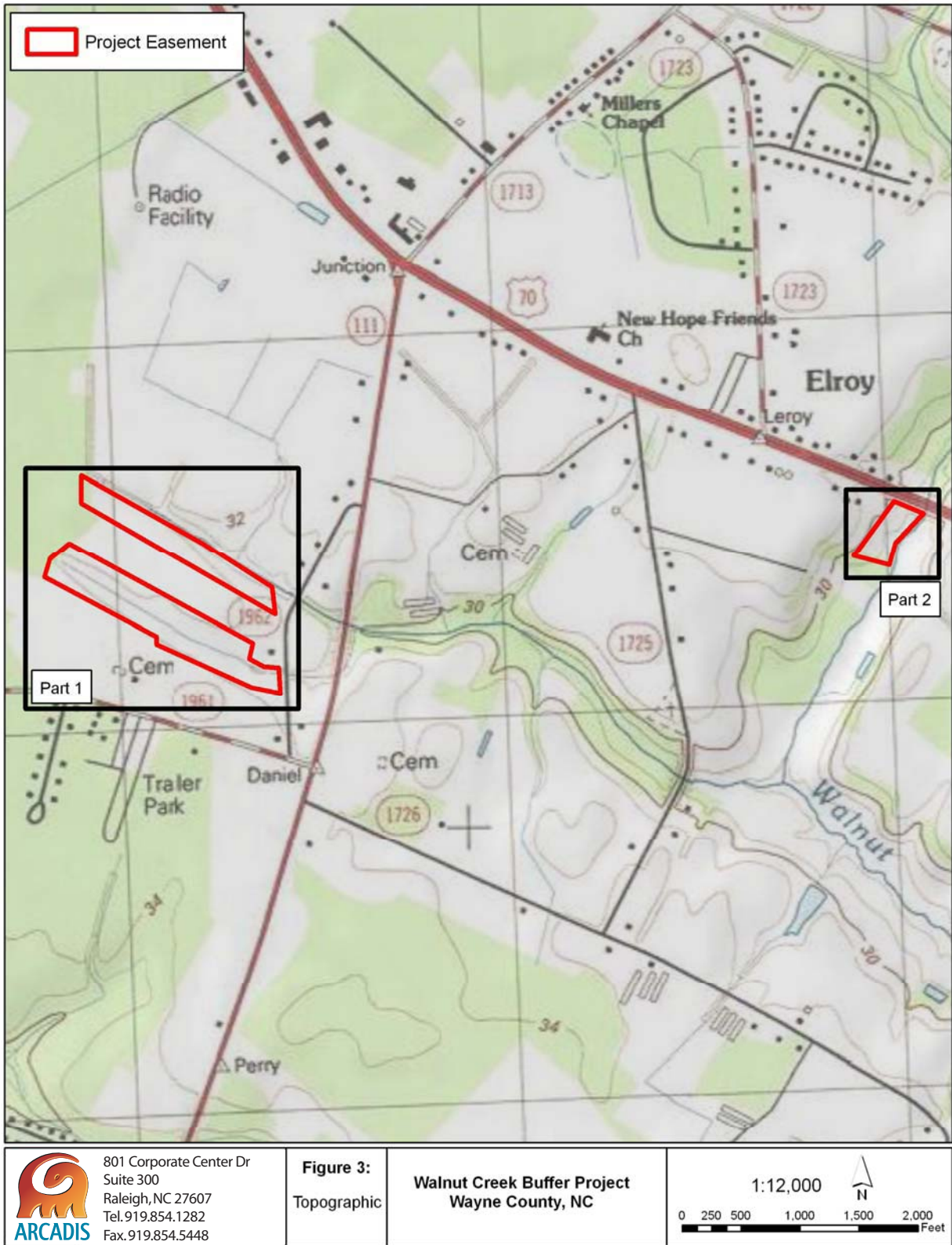

 801 Corporate Center Dr  
 Suite 300  
 Raleigh, NC 27607  
 Tel. 919.854.1282  
 Fax. 919.854.5448

**Figure 2:**  
Project Location

**Walnut Creek Buffer Project  
Wayne County, NC**

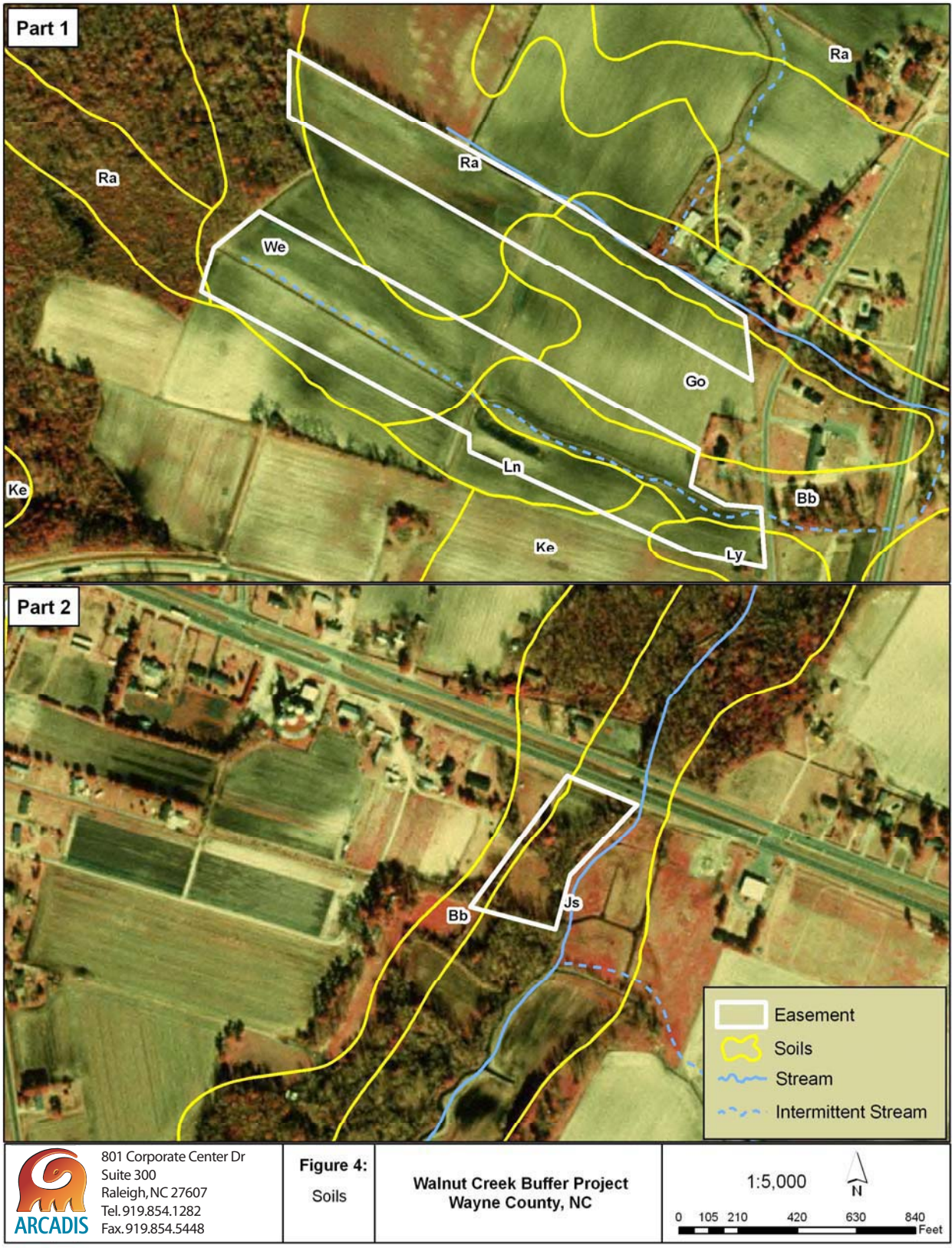
1:24,000  
  
 0 500 1,000 2,000 3,000 4,000 Feet

**Figure 2. Location of Walnut Creek Mitigation Site**



**Figure 3. Topographic Map of Walnut Creek Mitigation Site**





**Figure 4. Soils Map of Walnut Creek Mitigation Site**



As implemented, the Site provides 25 acres of riparian buffer restoration (25 Buffer Mitigation Units). Information on project owners and contractors follows:

Owner, Designer, and Monitoring Performer

Restoration Systems, L.L.C.  
1101 Haynes Street, Suite 107  
Raleigh, North Carolina 27604  
(919) 755-9490

Planting Contractor

Carolina Silvics  
908 Indian Trail Road  
Edenton, North Carolina 27932  
(919) 523-4375

Third Year Monitoring Performer

ARCADIS G&M of North Carolina, Inc.  
801 Corporate Center Drive, Suite 300  
Raleigh, North Carolina 27607

## **2.0 VEGETATION MONITORING PROGRAM**

Monitoring procedures for vegetation were designed in accordance with *Guidelines for Riparian Buffer Restoration* (EEP 2004) and the *North Carolina Administrative Code* (NCAC 2000). A general discussion of the plant community restoration monitoring program is provided. Monitoring of restoration efforts will be performed for a minimum of five years or until success criteria are fulfilled. The locations of monitoring plots are depicted in Figures 5 and 6.

During the first year, vegetation received visual evaluation on a periodic basis to ascertain the degree of overtopping of planted species by nuisance species. Quantitative sampling was conducted in the fall. Subsequently, quantitative sampling of vegetation will be performed between June 1 and December 30 of each monitoring year.



**Figure 5. Location of Sampling Transects in Part 1**





**Figure 6. Location of Sampling Transects in Part 2**



Eight sample transects were established within planted areas of the Site shortly after planting. Transects 1-7 (Part 1) are 200 feet in length and 12 feet in width (0.055 acre). Transect 8 is 160 feet long and 7.5 feet wide (0.055 acre). The shorter length of Transect 8 is due to size constraints in Part 2 of the Site. In each sample plot, vegetation parameters monitored include species composition and species density. Visual estimates of the abundance of herbaceous species were also noted. Photographs of the vegetation plots are included in Appendix A.

## 2.1 Vegetation Success Criteria

Rules published in the North Carolina Administrative Code (NCAC 2000) have been established to determine success criteria. All planted tree and shrub species and all native colonizing hardwood tree and shrub species are counted in establishing success criteria.

**Table 1. Planted Tree and Shrub Species**

Canopy Trees	Shrubs And Understory Trees
American elm ( <i>Ulmus americana</i> )	Red Bay ( <i>Persea palustris</i> )
Cherrybark Oak ( <i>Quercus pagoda</i> )	Sweet Bay ( <i>Magnolia virginiana</i> )
Green Ash ( <i>Fraxinus pennsylvanica</i> )	American Beautyberry ( <i>Callicarpa americana</i> )
Laurel Oak ( <i>Quercus laurifolia</i> )	Buttonbush ( <i>Cephalanthus occidentalis</i> )
Persimmon ( <i>Diospyros virginiana</i> )	Silky Dogwood ( <i>Cornus amomum</i> )
River birch ( <i>Betula nigra</i> )	
Swamp Black Gum ( <i>Nyssa biflora</i> var.)	
Swamp Chestnut Oak ( <i>Quercus michauxii</i> )	
Sugarberry ( <i>Celtis laevigata</i> )	
Sycamore ( <i>Platanus occidentalis</i> )	
Water Hickory ( <i>Carya aquatica</i> )	
Water Oak ( <i>Quercus nigra</i> )	
Willow Oak ( <i>Quercus phellos</i> )	
Yellow Poplar ( <i>Liriodendron tulipifera</i> )	

Vegetation success criteria for the Site will be the existence of an overall density of at least 320 hardwood tree and shrub stems per acre 5 years after the initial planting. Additional seedlings are expected to be recruited to the Site from adjacent forested communities. These individuals may also be counted in the overall success rate for the Site provided they are native hardwood species.

If vegetation success criteria are not achieved based on average density calculations from combined plots over the entire restoration area, supplemental planting may be performed with native species. Supplemental planting will be performed as needed until achievement of vegetation success criteria. No quantitative sampling requirements are proposed for herb assemblages as part of the vegetation success criteria. Development of floodplain forests over

several decades will dictate the success in recruitment and establishment of desired understory and groundcover populations. Photographs of the vegetation plots are included in Appendix A.

## **2.2 Vegetation Sampling Results and Comparison to Success Criteria**

### **2.2.1 Woody Trees and Shrubs**

Quantitative sampling of vegetation was conducted in October 2007 and results are provided in Table 2. Vegetation success criteria for Year 3 (320 stems per acre) were exceeded for the 2006 annual monitoring year with an average of 2,507 stems per acre over all transects. All individual vegetation transects met success criteria and all except Transect 8 exhibited good species diversity with 5 to 14 planted species present within each plot. Sweet-gum (*Liquidambar styraciflua*) almost completely dominated Transect 8 at the expense of many of the planted species. As reported in the Year 1 Annual Monitoring Report, this portion of the Site (Part 2) had been used by the previous owner as a pasture for a pony. An adjacent stand of mature Sweet-gums had apparently produced enough seed over the years to establish a dense population of Sweet-gum over the area that had been planted. Most appeared to be from stump sprouting (multiple stems) and many were nearly 8 feet tall. Where multiple stems were obviously from a single root system, the plant was counted only once.

Transects 1-7 supported only limited numbers of non-planted stems. The most numerous colonizing species was Groundsel tree, with a maximum of 28 stems noted in Transect 6.

**Table 2. 2007 Vegetation Monitoring Data and Results**  
Walnut Creek Buffer Restoration Site

Species	Common Name	Plot 1	Plot 2	Plot 3	Plot 4	Plot 5	Plot 6	Plot 7	Plot 8
<b>Acer rubrum</b>	Red maple	1	12	5	6	1	1	1	31
<i>Baccharis halimifolia</i>	Groundsel Tree					1	28	9	21
<b>Betula nigra</b>	River birch	8	9	5	11	2	6	8	
<b>Callicarpa americana</b>	Beauty-berry	7	6	8	3	2	2	5	
<i>Carya sp.</i>	Hickory							1	
<b>Cephalanthus occidentalis</b>	Button bush	8	1	8	12		8		
<b>Cornus amomum</b>	Silky dogwood	12	12	8	8	6	3	13	
<b>Diospyros virginiana</b>	Persimmon	5	5	3	4		2	7	
<b>Fraxinus pennsylvanica</b>	Green ash	1	8	4		3	3	3	
<i>Juniperus virginiana</i>	Eastern red-cedar					1			
<i>Ligustrum sinense</i>	Chinese privet								4
<i>Liquidambar styraciflua</i>	Sweet-gum	18	3	4	6			5	265
<b>Liriodendron tulipifera</b>	Yellow poplar	2	5	6	9	3	1	9	
<b>Magnolia virginiana</b>	Sweet bay	2	1	8	9	4	7	8	
<i>Myrica cerifera</i>	Wax myrtle		1			1			2
<b>Persea palustris</b>	Red bay	2	2	4	1		2		
<i>Pinus taeda</i>	Loblolly pine						2		1
<b>Platanus occidentalis</b>	Sycamore	4	59	18	31		31	66	2
<i>Prunus serotina</i>	Black cherry	3	3	4	3	3	2	5	2
<b>Quercus michauxii</b>	Swamp chestnut oak						2		
<b>Quercus nigra</b>	Water oak					3			2
<b>Quercus pagoda</b>	Cherrybark oak	2	5	6	2		4	2	1
<b>Quercus phellos</b>	Willow oak	2	15	4	5	10	11	7	7
<i>Rhus copallina</i>	Winged sumac	7							5
<i>Salix sericea</i>	Silky willow						2		
<i>Ulmus rubra</i>	Slippery elm	4	10		4		2	1	
	<b>Total Stems in Plot</b>	88	156	102	108	41	117	150	343
	<b>Total Stems per Acre</b>	1597	2831	1851	1960	744	2124	2723	6225
	<b>Average Stems per Acre</b>		2507						

\*Planted Species are in bold



## 2.2.2 Herbaceous Vegetation

Herbaceous vegetation colonizing Part 1 of the Site during 2007 included species typically referred to as agricultural weeds. Species colonizing Part 2 were fewer in number and consisted of those typically found in wetter habitats. Table 3 includes the dominant species observed during monitoring.

**Table 3. 2007 Herbaceous Vegetation Monitoring Data and Results**

Species	Common Name	Part 1	Part 2
<i>Cassia obtusifolius</i>	Sickle pod	Present	
<i>Eupatorium capillifolium</i>	Dog fennel	Abundant	
<i>Ipomoea pandurata</i>	Morning glory	Rare	
<i>Rubus</i> sp.	Blackberry	Rare	Abundant
<i>Juncus effusus</i>	Common rush	Present	Common
<i>Aster pilosus</i>	Frost aster	Abundant	
<i>Solidago</i> sp.	Goldenrod	Abundant	Present
<i>Andropogon virginicus</i>	Broomsedge	Present	
<i>Asplenium platyneuron</i>	Ebony spleenwort		Present
<i>Polygonum pennsylvanica</i>	Smartweed	Present	
<i>Lonicera japonica</i>	Japanese Honeysuckle	Present	Abundant
<i>Toxicodendron radicans</i>	Poison ivy	Rare	
<i>Erechtites hieracifolius</i>	Fireweed	Present	
<i>Paspalum dilatatum</i>	Dallis grass	Present	
<i>Boehmeria cylindrica</i>	False nettle	Present	

During the 2007 growing season, Dog fennel (*Eupatorium capillifolium*) dominated the herbaceous vegetation of Part 1 of the Site. Almost homogeneous stands grew throughout most of the area. Residual fertilizer from previous applications appeared to continue to promote herbaceous plant growth as the Dog fennel was approximately 10-12 feet tall. However, there was no significant mortality of the planted species; all are broadleaf plants adapted to germination and growth in a relatively shaded environment.

Part 2 of the Site supported numerous sprouting Sweet-gum stems as well as common rush (*Juncus effusus*), Japanese honeysuckle (*Lonicera japonica*), and blackberry (*Rubus* sp.).

Observations of the effect of competition on the planted by colonizing species will be continued to determine if future herbicide applications will be necessary. No herbicide application is recommended at this time.

### **3.0 CONCLUSIONS**

In summary, all vegetation plots across the Site were above the required 320 stems/acre with an average of 2,507 stems/acre in the third monitoring year (Year 2007). All individual vegetation plots met success criteria and all but one exhibited good species diversity with five to 14 planted species present within each plot. Herbaceous vegetation typical of abandoned agricultural fields was observed, but there was no evidence of any effect (significant mortality) on the planted species.

### **4.0 REFERENCES**

- EEP. 2004. Ecosystem Enhancement Program Guidelines for Riparian Buffer Restoration, North Carolina Department of Environment and Natural Resources, Raleigh, NC. October .
- NCAC. 2000. North Carolina Administrative Code. 15A NCAC 02B .0242.

**APPENDIX A**  
**VEGETATION PLOT PHOTOGRAPHS**





**Transect 1**



**Transect 2**





**Transect 3**



**Transect 4**





**Transect 5**



**Transect 6**





**Transect 7**



**Transect 8**