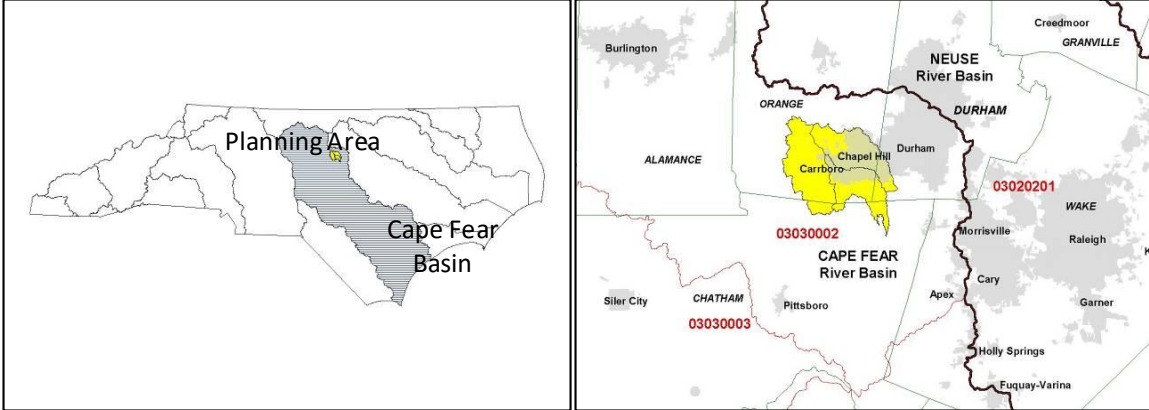


# MORGAN AND LITTLE CREEK LOCAL WATERSHED PLAN

## Fact Sheet

<b>Location Cities:</b> <b>River Basin:</b> <b>Cataloging Unit:</b> <b>14-digit Hydrologic Units:</b> <b>County:</b>	Chapel Hill, Carrboro, Durham Cape Fear 03030002 03030002060100, 03030002060070, 03030002060080 Orange, Durham, Chatham
<b>Watershed Area:</b>	74.5 square miles
<b>Participants:</b>	Local governments & resource professionals; Planning process was facilitated by Cape Fear River Assembly
<b>Watershed Assessment Contractor</b>	Tetra Tech, Inc.
	

### Project Overview

This watershed was selected based on several 303(d) listed water bodies, urban runoff, fecal coli form bacteria, sediment, low dissolved oxygen and habitat degradation issues. The watersheds in this Local Watershed Plan (LWP) drain to B. Everett Jordan Reservoir, a drinking water supply designated as a Nutrient Sensitive Water. These watersheds also contain Natural Heritage Program Significant Natural Heritage Areas that are stressed due to increased urban development. A stakeholder team was established in October 2002 and met bi-monthly until its completion in December 2004.

### LWP Project Activity

While the NC Division of Mitigation Services (DMS), formerly Ecosystem Enhancement Program, funded planning process is complete, the Towns of Carrboro and Chapel Hill received a Section 319 grant to partner on an initiative to improve the biological condition of Bolin Creek, a sub-watershed of Little Creek.

DMS has been actively implementing projects identified during the LWP. DMS has completed constructing a restoration project on Chapel Creek (1,400 ft.) and preserved over



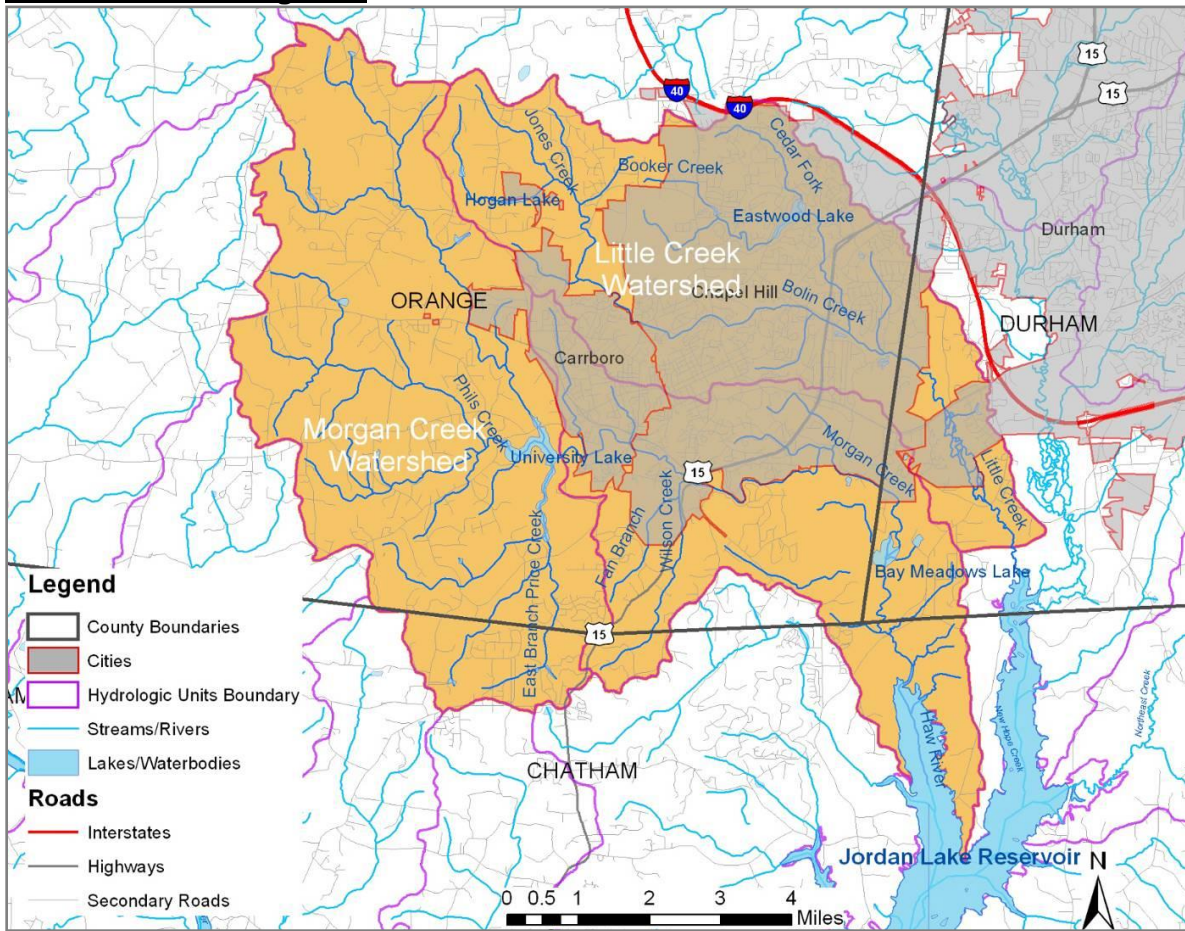
Environmental Quality

4,500 feet of stream and 19 acres of floodplain wetland in the LWP. The program will continue to support implementation of LWP projects and recommendations.

**Documents & Plan Materials**

<a href="#"><u>Morgan and Little Creek Plan Summary (4mb)</u></a>	<a href="#"><u>Detailed Assessment (15mb)</u></a>
<a href="#"><u>Preliminary Findings Report (14mb)</u></a>	<a href="#"><u>Targeting of Management Report (18mb)</u></a>
<a href="#"><u>Summary of Findings and Recommendations</u></a>	

**Watershed Planning Area**



**Figure 1. Morgan and Little Creek Planning Area**

