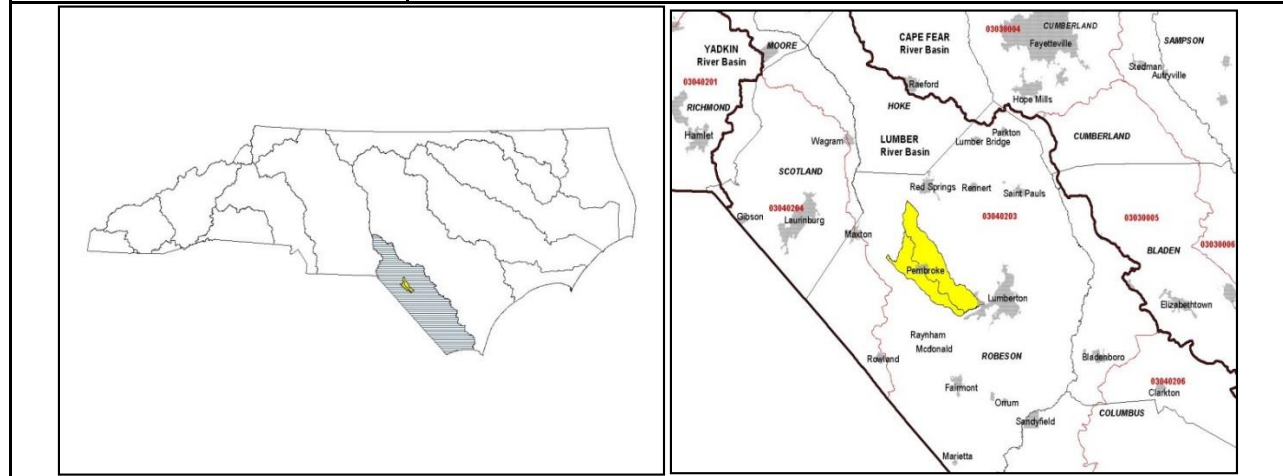




BEAR SWAMP LOCAL WATERSHED PLAN

Fact Sheet

Location: River Basin: Cataloging Unit: 14-digit Hydrologic Units: County:	In the vicinity of Lumberton and Pembroke, NC Lumber 03040203 03040203050010, 03040203030010 Robeson
Watershed Area:	52 square miles
Participants:	Lumber River COG, Porter Scientific, Lumber River Conservancy, Town of Pembroke
Watershed Assessment Contractor:	Earth Tech



Project Overview

Lumber River and Bear Swamp watersheds were selected due to water quality and aquatic degradation issues related to unbuffered stream segments, proximity to projected Department of Transportation impacts and important habitat values identified within the area. The watershed area also contains High Quality Waters and Water Supply Waters, a reach of the National Wild and Scenic River and numerous plant and animal species with special status.

Project Schedule

The Cataloging Unit wide screening analysis and the Watershed Characterization Report was completed in December 2003. Phase 2 field assessments were completed in October 2004. The final Watershed Management Plan was completed in February 2006. Additional work was done to implement the plan in 2006-2008.





Environmental
Quality

Documents

[Lumber River Technical Watershed Assessment Initial Watershed Characterization \(February 2004\)](#)

[Lumber River Technical Watershed Assessment Critical Area Analysis \(September 2005\)](#)

[Lumber River Technical Watershed Assessment Watershed Management Plan \(February 2006\)](#)

[Findings and Recommendations Summary](#)

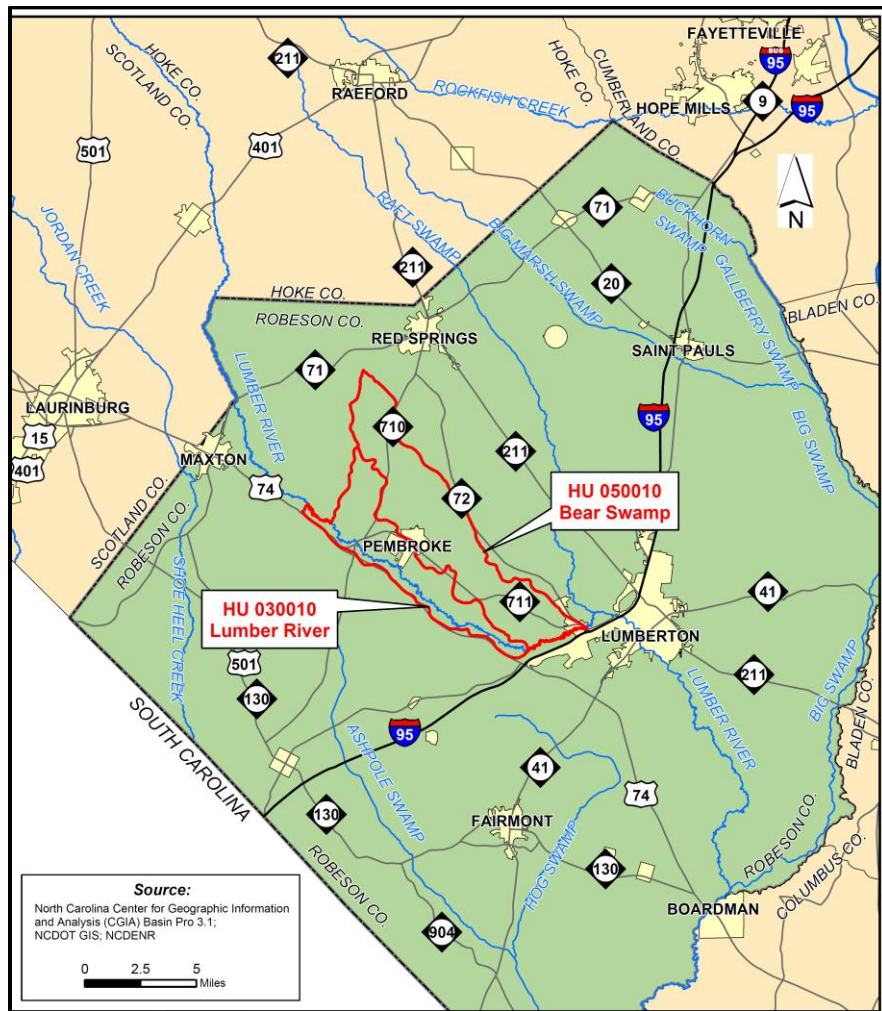


Figure 1. Bear Swamp LWP Vicinity Map

