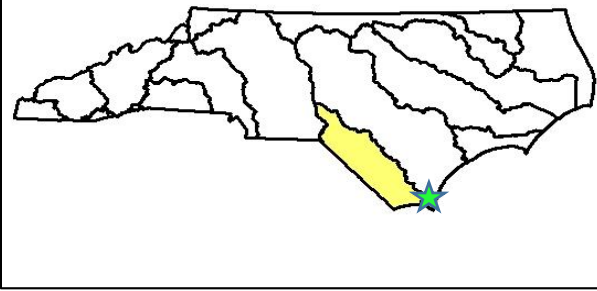
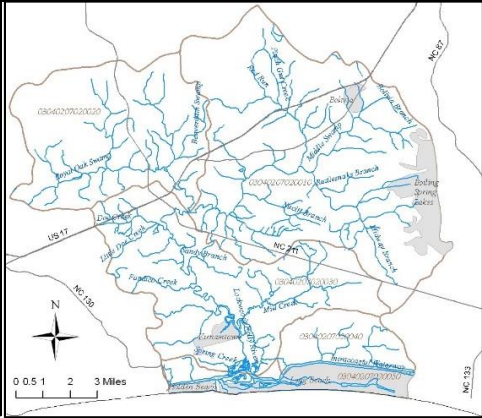




LOCKWOODS FOLLY LOCAL WATERSHED PLAN

Fact Sheet

Location River Basin: Cataloging Unit: Hydrologic Units: County:	Lumber 03040207 03040207020010, 03040207020020, 03040207020030, 03040207020040, and 03040207020050 Brunswick
Watershed Area:	153 square miles
Stakeholder Involvement:	Lockwood Folly Roundtable sponsored by Brunswick County and NC Coastal Federation
Watershed Assessment Contractor:	Stantec
 	

Project Overview

The Lockwoods Folly River watershed is located in Brunswick County. It originates near the town of Bolivia and empties to the Atlantic through the Lockwoods Folly Inlet. A large portion of the watershed is forest/wetlands but is experiencing increasing development, with Brunswick County being one of the fastest growing counties in North Carolina. The Lockwoods Folly River is listed on the 303(d) list of impaired waters for shellfish closures due to fecal coliform bacteria.

The watershed plan identified fecal coliform and nutrients as the primary water quality pollutants. The stakeholder group, the Lockwoods Folly Roundtable, recommended Low Impact Development as one of its 9 management strategies. The Plan modeled five different build-out scenarios to reveal the impact of future development on nutrient, fecal coliform and suspended solids loading. This data supports the use of Low Impact Development to reduce pollutant load. Through GIS analysis, 85



potentially impacted stream and wetland sites were identified and field verified. One hundred forty additional sites were selected randomly and assessed in the field to determine watershed health. Impacted sites were identified for restoration. Ten stream, twelve wetland and 23 best management practice (BMP) sites were identified for restoration/retrofit.

The planning phase was completed in 2007. Since that time, NC Coastal Federation received funding to implement several of the BMPs. NC Coastal Federation, Brunswick County and Stantec completed a TMDL for fecal coliform and a TMDL Implementation Plan, which will utilize the LWP but focus on fecal coliform reductions.

Documents

[Lockwoods Folly Local Watershed Plan Preliminary Findings Report](#)

[Lockwoods Folly Detailed Assessment and Targeting of Management Report](#)

[Lockwoods Folly LWP Summary of Findings and Recommendations](#)

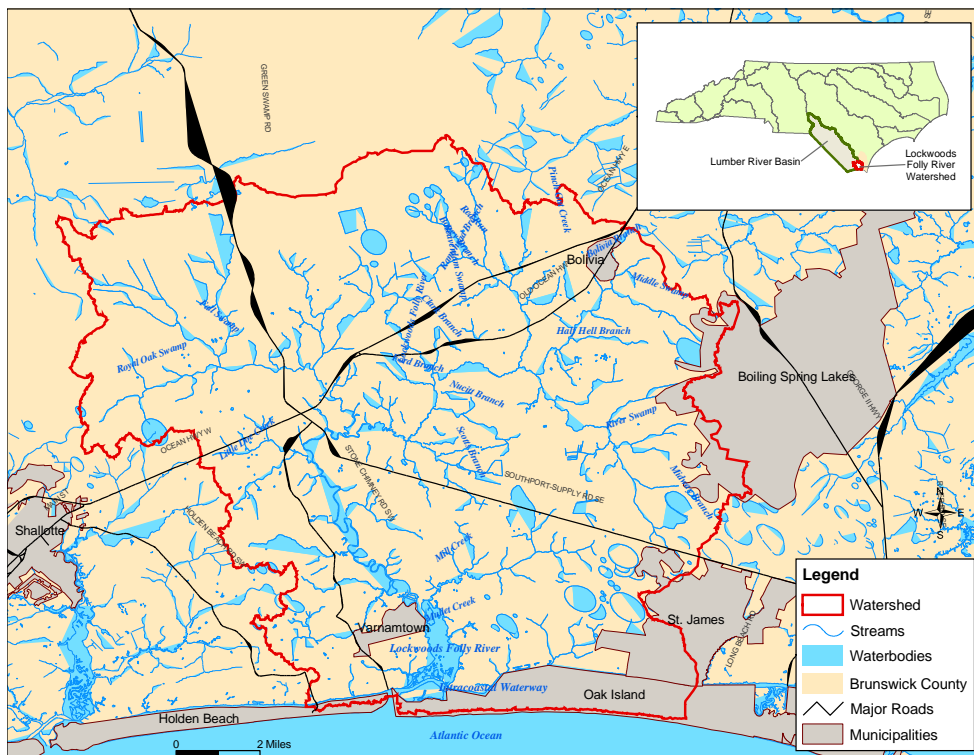


Figure 1. Location map for Lockwoods Folly LWP