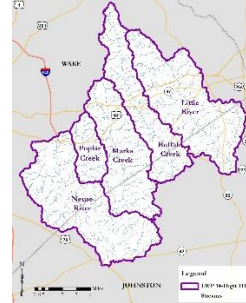
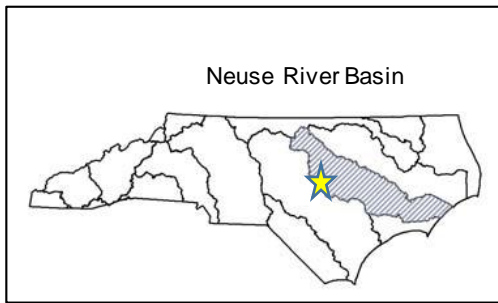


WAKE JOHNSTON LOCAL WATERSHED PLAN

Fact Sheet

Location Cities: River Basin: Cataloging Unit: 14-digit Hydrologic Units:	Johnston & Wake Counties, NC Neuse 03020201 03020201100010, 03020201100020, 03020201100030, 03020201180020 (partial HU), and 03020201180050 (partial HU)
County:	Johnston and Wake
Watershed Area:	144 square miles
Participants:	Federal, state, local government agencies; NC State University; Triangle Land Conservancy
Cooperators Conducting the Watershed Assessment:	Wake County Environmental Services, Ecosystem Enhancement Program, NC Division of Water Quality, NCSU Biological & Agricultural Engineering



Project Overview

In 2008, discussions among resource professionals in Wake County government and the NC Division of Mitigation Services (DMS), formerly Ecosystem Enhancement Program, revealed common watershed planning goals that included the need to restore impaired waters and protect threatened habitat. In early 2009, planners identified watersheds in eastern Wake County and western Johnston County that met these common criteria, while also contributing to independent organizational objectives. DMS assembled two advisory committees (technical and general) to oversee plan development.

The five project watersheds include Beddingfield Creek & adjacent portions of the Neuse River, Poplar Creek, upper Marks Creek, upper Buffalo Creek, and a portion of the Little River. Within these watersheds lie portions of several municipalities including Clayton, Knightdale, Wendell (entirely within), and Zebulon. Residential and commercial development continues to expand from these centers. Much of Buffalo Creek and a segment of the Neuse are designated as impaired waters by the NC Division of Water Quality due to poor biological communities

LWP Project Activity

DMS completed the Preliminary Findings Report in August 2013. The report identified ten general recommendations for the planning area as well as restoration objectives for each of the five major project watersheds. Additional watershed evaluation work was incorporated as part of the Neuse 01 Regional Watershed Plan, completed in July 2015.

Planning Documents

[Preliminary Findings Report](#)

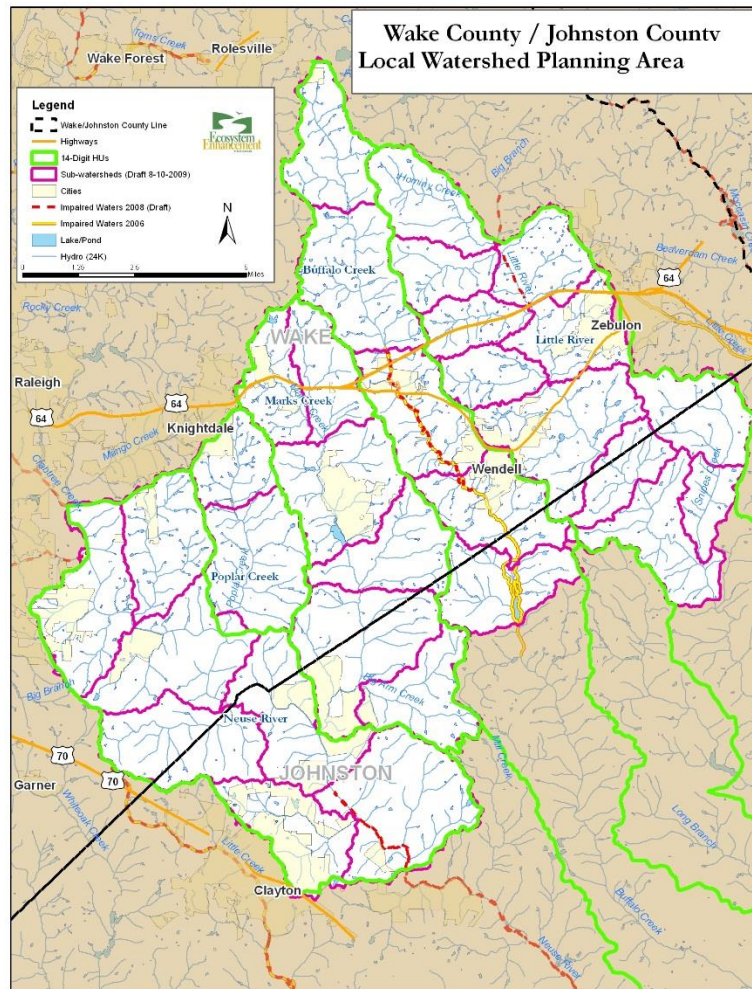


Figure 1. Wake Johnston LWP Creek Planning Area