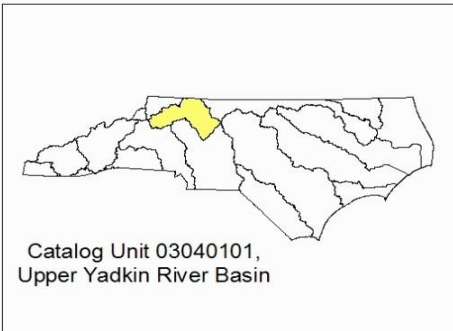



Ararat River & Upper Yadkin Local Watershed Plan FACT SHEET

<p style="text-align: center;"><u>Location</u></p> <p>River Basin: Cataloging Unit: 14-digit Hydrologic Units:</p> <p style="text-align: center;">Counties:</p>	<p>Upper Yadkin 03040101 03040101100010, 03040101100020, 03040101110010, 03040101110020, 03040101110030, 03040101110040, 03040101110050, 03040101110060, and 03040101110070 Surry County (+ small portion of Stokes Co.)</p>
<p style="text-align: center;"><u>Watershed Area</u></p>	<p>2008 Initial Area ~235 square miles 2011 Focus Area: Toms Creek & Pilot Creek (~50 sq. miles)</p>
<p style="text-align: center;"><u>Participants:</u></p>	<p>Stakeholder Team – NC DWQ, Surry SWCD, Surry NRCS, Surry Co. Planning, Stokes County SWCD, Stokes County Planning, Town of Pilot Mountain, Piedmont Land Conservancy, NC Wildlife Resources Commission (WRC), NC CWMTF, NC Div. of Parks (Pilot Mountain SP), Pilot View RC&D, Resource Institute, Inc., Piedmont-Triad Regional Council, NC DENR – DWQ, NC DENR – Public Water Supply, NC Div. Forest Resources</p>
<p style="text-align: center;"><u>Watershed Assessment Contractors</u></p>	<p>NC DWQ – Watershed Assessment Team (WAT); John R. McAdams – EcoEngineering; and Wildlands Engineering</p>
 <p>Catalog Unit 03040101, Upper Yadkin River Basin</p>	 <p>Local Watershed Planning (LWP) Study Area</p>

Project Overview

The nine 14-digit hydrologic units (HUs) comprising the initial (2008) study area for this Local Watershed Planning (LWP) effort were selected on the basis of several factors, including: the presence of impaired stream reaches and degraded habitat; the opportunity to partner with Surry SWCD and other key stakeholders; the presence of good candidate sites for stream restoration in rural catchments; prior designation of three of the HUs as EEP Targeted Local Watersheds (TLWs); and the presence of existing (non-EEP) projects in the local watersheds. The LWP was originally scoped as a 12-month 'fast track' to help meet EEP compensatory mitigation goals within the upper Yadkin Cataloging Unit (CU 03040101) and to assist local stakeholders seeking to implement non-mitigation projects (e.g., storm water BMPs) within high-priority subwatersheds.

Project Schedule

DWQ- WAT staff conducted a rapid field screening of water quality conditions across the initial study area in March of 2008. In late 2008, DWQ-WAT began more intensive water quality monitoring at selected sites across the initial study area. The DWQ-WAT final *Integrated Report* for the Ararat LWP area was completed in summer 2009. EEP's initial consultant (John R. McAdams Company – EcoEngineering) conducted a GIS-based screening in fall 2008 to determine priority subwatersheds for initial project identification efforts. The McAdams/EcoEngineering effort resulted in the *Task 2 Technical Memo*. The 'fast track' effort was placed on hold in early 2009 due to changing program priorities.

EEP (now Division of Mitigation Services or DMS) re-started the LWP effort in early 2011. The primary goal was to complete the watershed assessment and planning process for the Ararat-Pilot Mountain (APM) focus area, which includes the Toms Creek, Chinquapin Creek and Pilot Creek subwatersheds [see area outlined in red below]. The 50-square mile focus area was selected on the basis of several factors, including previously selected priority subwatersheds, ongoing initiatives related to greenways and stormwater management, the proximity of Pilot Mountain State Park, and the input of local stakeholders. Wildlands Engineering conducted GIS-based analysis of buffer conditions and project screening. The final stakeholder meeting was held in July 2013 and the final *Watershed Management Plan* was completed in December 2013.

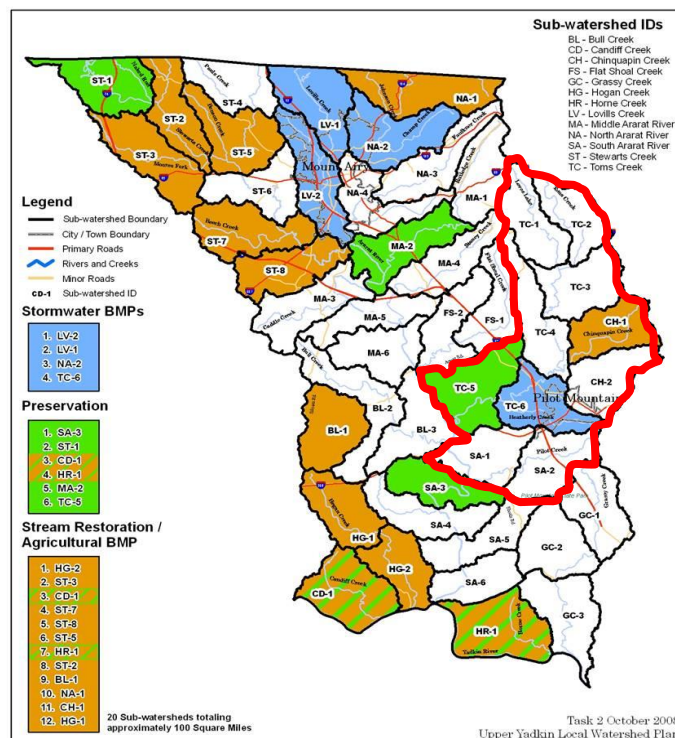
Project Documents

[Watershed Assessment Report](#)

[Watershed Management Plan](#)

[Project Atlas](#)

[Summary of Findings & Recommendations](#)



Priority Sub-watersheds
for Further Assessment



Nothing ComparesSM