



Shellfish Leasing Process

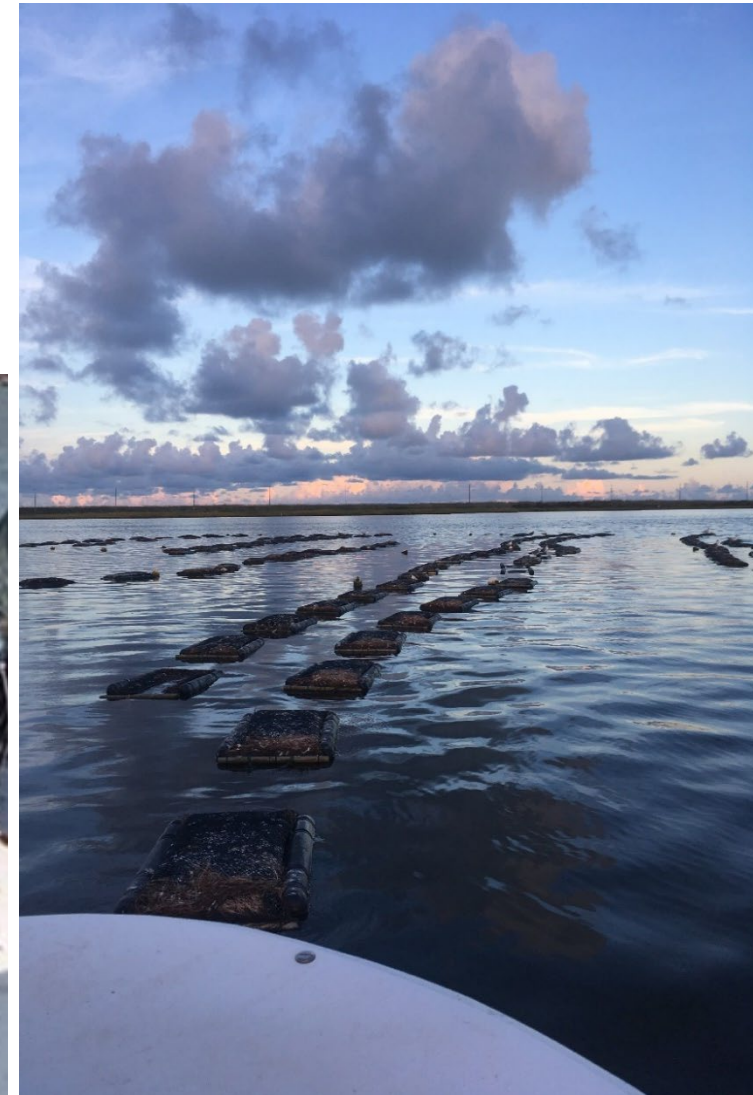
Role of Public Hearing and Public Comment

Zach Harrison | NC Division of Marine Fisheries



Shellfish Leases Basics

- Public Trust Waters Leased for Shellfish Aquaculture
 - Artificially Propagated Stocks
 - Reared in “Controlled Environment”
 - Leases give private rights to shellfish in an area
 - Water is still navigable at your own risk



How Are
Leases Defined?

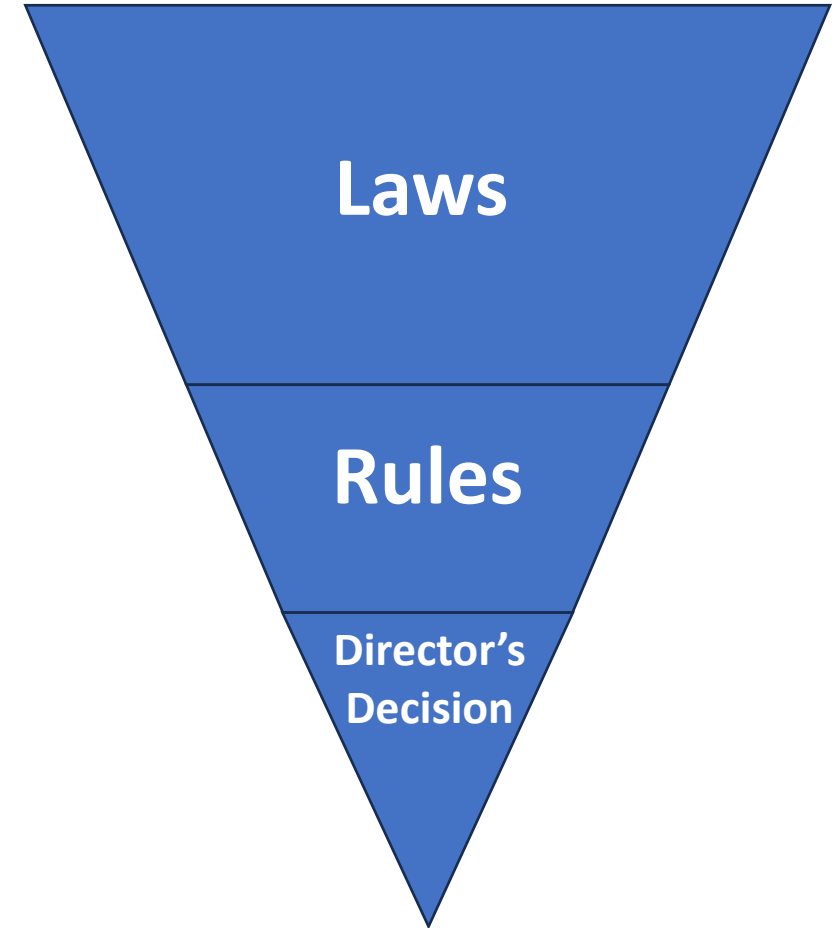
How DMF
Processes Leases

What Can
MFC Do?

Addressing User
Conflicts

Shellfish Leases are Governed by Law

- Shellfish Leases in General Statutes
 - NCGS Chapter 113 Article 16
 - Changes to Shellfish Leases
 - 26 Session Laws Since 1997 (FRA)
 - 48 Total Changes to General Statutes



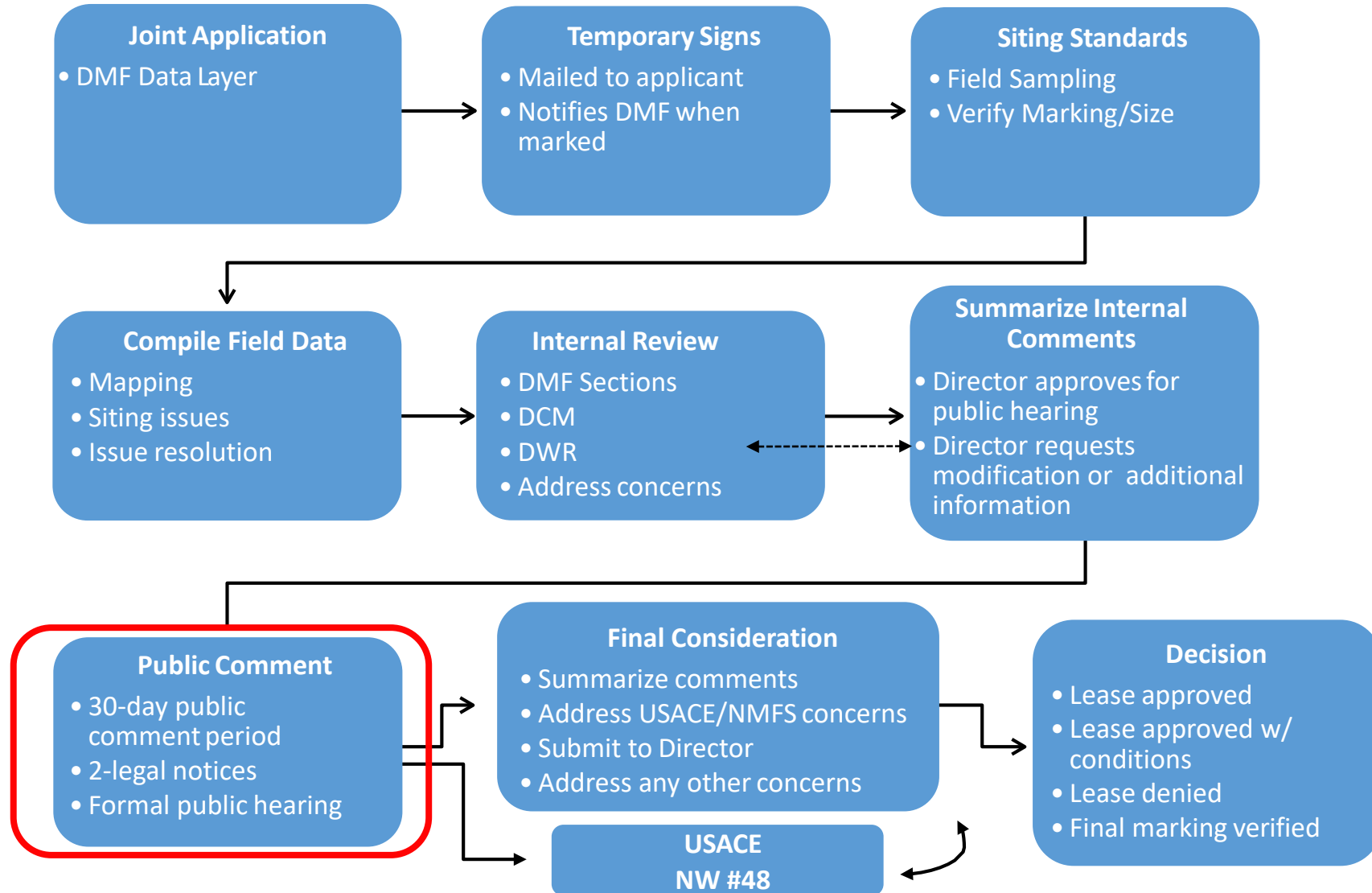
How Are Leases Defined?

How DMF Processes Leases

What Can MFC Do?

Addressing User Conflicts

Shellfish Lease Application Process



How Are
Leases Defined?

How DMF
Processes Leases

What Can
MFC Do?

Addressing User
Conflicts

Shellfish Lease Investigation

- Marking Poles and Acreage
- Biological (SAV/Natural Shellfish)
- Navigation and Depth



How Are
Leases Defined?

How DMF
Processes Leases

What Can
MFC Do?

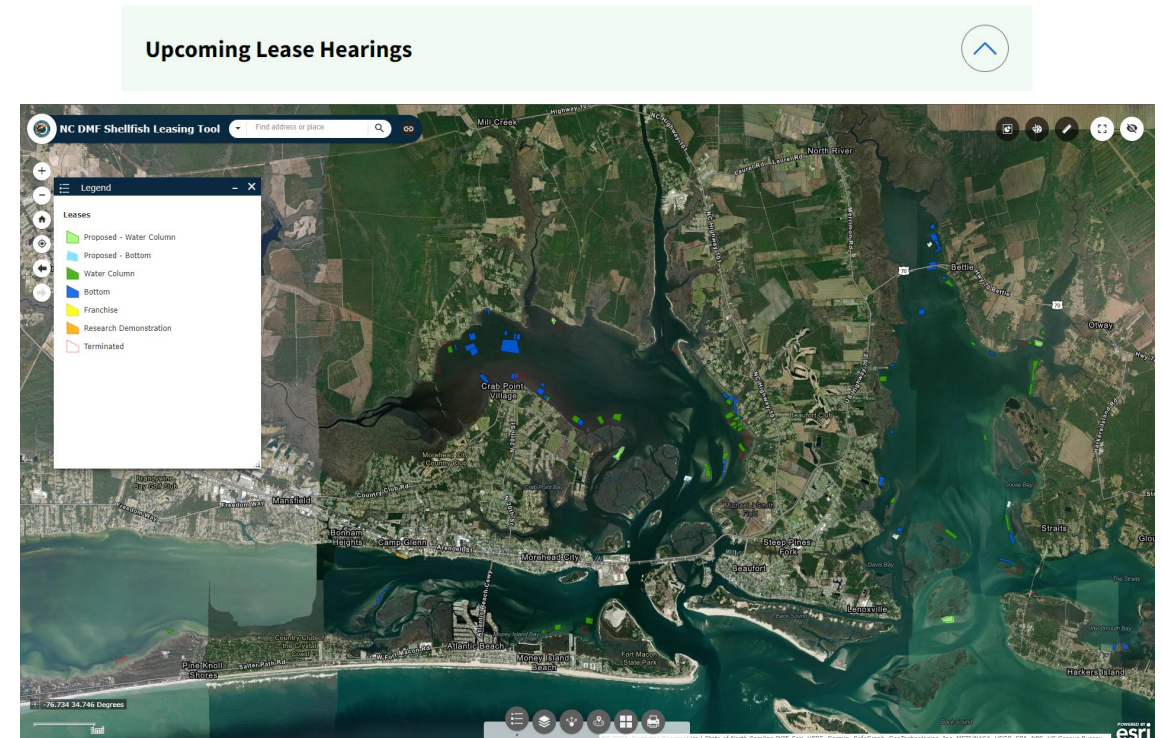
Addressing User
Conflicts

Public Comment

- Evaluate Compatibility
 - Determine Effects on Public Trust Usage
 - Direct Impacts
 - Not a Vote
- Public Comment Collected
 - Comments at Public Hearing
 - Online and Letters During PC Period
- Additional Outreach
 - Shellfish Lease Website
 - Shellfish Leasing Tool
 - Press Release
 - Proclamations Mailing/Email List
 - Social Media Posts

Shellfish Lease Hearings

The public hearing/public comment process is a requirement for all proposed shellfish leases in North Carolina. The Upcoming Lease Hearings accordion lists scheduled hearings and includes links to information about proposed shellfish leases. The Previous Lease Hearings accordion contains the hearing minutes and comments received during the public comment period.



How Are
Leases Defined?

How DMF
Processes Leases

What Can
MFC Do?

Addressing User
Conflicts

Director's Decision

- Compatibility with Public Trust Usage
 - Navigation
 - Commercial Fishing
 - Recreational Fishing
 - Other Recreation
- Director's Decision
 - Approve
 - Approve with Conditions
 - Deny



How Are
Leases Defined?

How DMF
Processes Leases

What Can
MFC Do?

Addressing User
Conflicts

How to Make Public Comments

- Not General Waterbody Comments
- Specific Uses of that Location

