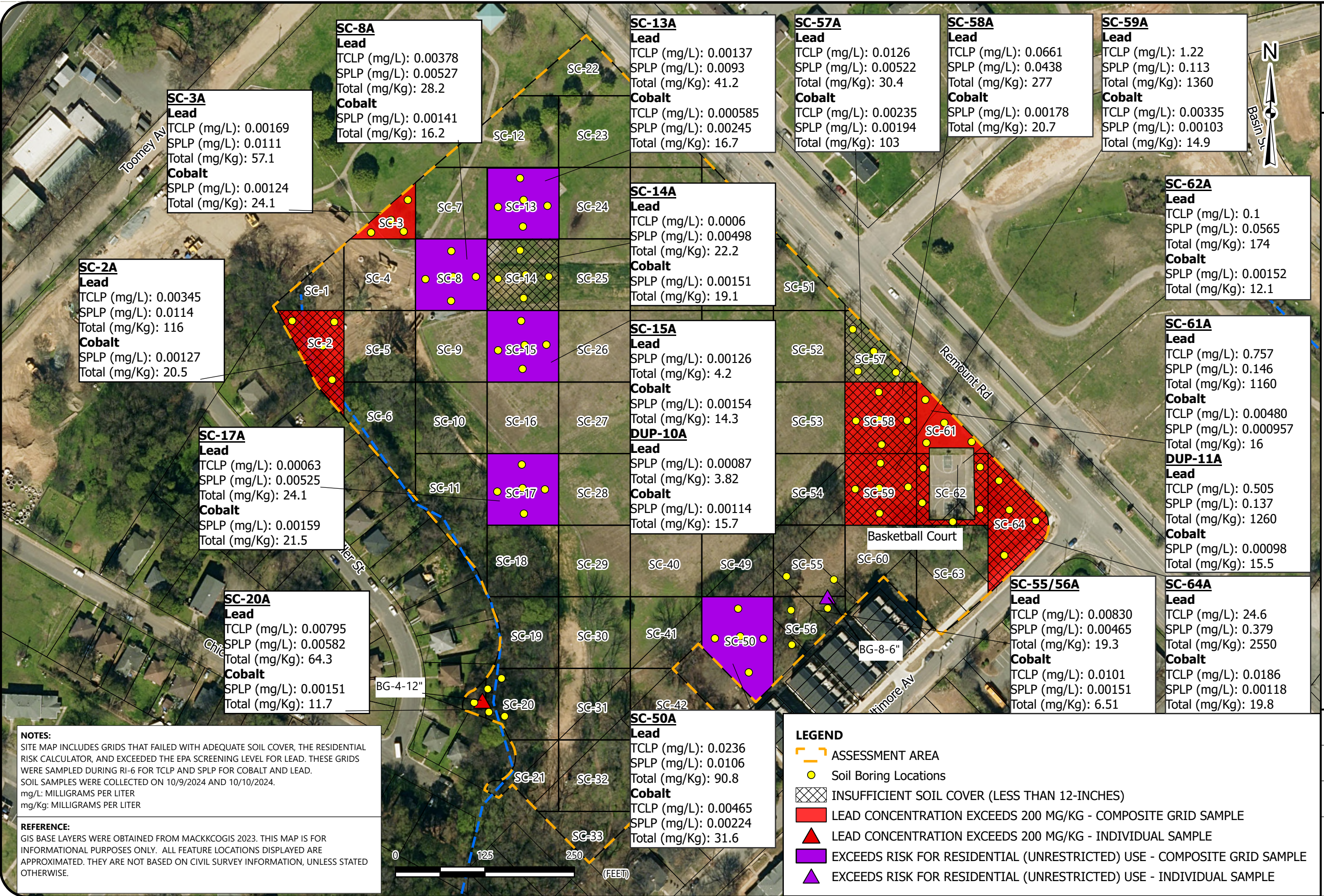


Drawing Path: T:\Raleigh-1050\Projects\2021\215952_NCDEQ_Southside Park Assessments_Charlotte NC\GIS\RI-1 & RI-2\ARCPRO Files\Southside Park Landfill Map\Southside Park LF 7-30-24 Update.aprx plotted by Connor Hicks



SC-3A
Lead
 TCLP (mg/L): 0.00169
 SPLP (mg/L): 0.0111
 Total (mg/Kg): 57.1
Cobalt
 SPLP (mg/L): 0.00124
 Total (mg/Kg): 24.1

SC-8A
Lead
 TCLP (mg/L): 0.00378
 SPLP (mg/L): 0.00527
 Total (mg/Kg): 28.2
Cobalt
 SPLP (mg/L): 0.00141
 Total (mg/Kg): 16.2

SC-13A
Lead
 TCLP (mg/L): 0.00137
 SPLP (mg/L): 0.0093
 Total (mg/Kg): 41.2
Cobalt
 TCLP (mg/L): 0.000585
 SPLP (mg/L): 0.00245
 Total (mg/Kg): 16.7

SC-57A
Lead
 TCLP (mg/L): 0.0126
 SPLP (mg/L): 0.00522
 Total (mg/Kg): 30.4
Cobalt
 TCLP (mg/L): 0.00235
 SPLP (mg/L): 0.00194
 Total (mg/Kg): 103

SC-58A
Lead
 TCLP (mg/L): 0.0661
 SPLP (mg/L): 0.0438
 Total (mg/Kg): 277
Cobalt
 SPLP (mg/L): 0.00178
 Total (mg/Kg): 20.7

SC-59A
Lead
 TCLP (mg/L): 1.22
 SPLP (mg/L): 0.113
 Total (mg/Kg): 1360
Cobalt
 TCLP (mg/L): 0.00335
 SPLP (mg/L): 0.00103
 Total (mg/Kg): 14.9

SC-2A
Lead
 TCLP (mg/L): 0.00345
 SPLP (mg/L): 0.0114
 Total (mg/Kg): 116
Cobalt
 SPLP (mg/L): 0.00127
 Total (mg/Kg): 20.5

SC-14A
Lead
 TCLP (mg/L): 0.0006
 SPLP (mg/L): 0.00498
 Total (mg/Kg): 22.2
Cobalt
 SPLP (mg/L): 0.00151
 Total (mg/Kg): 19.1

SC-62A
Lead
 TCLP (mg/L): 0.1
 SPLP (mg/L): 0.0565
 Total (mg/Kg): 174
Cobalt
 SPLP (mg/L): 0.00152
 Total (mg/Kg): 12.1

SC-17A
Lead
 TCLP (mg/L): 0.00063
 SPLP (mg/L): 0.00525
 Total (mg/Kg): 24.1
Cobalt
 SPLP (mg/L): 0.00159
 Total (mg/Kg): 21.5

SC-15A
Lead
 SPLP (mg/L): 0.00126
 Total (mg/Kg): 4.2
Cobalt
 SPLP (mg/L): 0.00154
 Total (mg/Kg): 14.3
DUP-10A
Lead
 SPLP (mg/L): 0.00087
 Total (mg/Kg): 3.82
Cobalt
 SPLP (mg/L): 0.00114
 Total (mg/Kg): 15.7

SC-61A
Lead
 TCLP (mg/L): 0.757
 SPLP (mg/L): 0.146
 Total (mg/Kg): 1160
Cobalt
 TCLP (mg/L): 0.00480
 SPLP (mg/L): 0.000957
 Total (mg/Kg): 16
DUP-11A
Lead
 TCLP (mg/L): 0.505
 SPLP (mg/L): 0.137
 Total (mg/Kg): 1260
Cobalt
 SPLP (mg/L): 0.00098
 Total (mg/Kg): 15.5

SC-20A
Lead
 TCLP (mg/L): 0.00795
 SPLP (mg/L): 0.00582
 Total (mg/Kg): 64.3
Cobalt
 SPLP (mg/L): 0.00151
 Total (mg/Kg): 11.7

SC-50A
Lead
 TCLP (mg/L): 0.0236
 SPLP (mg/L): 0.0106
 Total (mg/Kg): 90.8
Cobalt
 TCLP (mg/L): 0.00465
 SPLP (mg/L): 0.00224
 Total (mg/Kg): 31.6

SC-55/56A
Lead
 TCLP (mg/L): 0.00830
 SPLP (mg/L): 0.00465
 Total (mg/Kg): 19.3
Cobalt
 TCLP (mg/L): 0.0101
 SPLP (mg/L): 0.00151
 Total (mg/Kg): 6.51

SC-64A
Lead
 TCLP (mg/L): 24.6
 SPLP (mg/L): 0.379
 Total (mg/Kg): 2550
Cobalt
 TCLP (mg/L): 0.0186
 SPLP (mg/L): 0.00118
 Total (mg/Kg): 19.8

NOTES:
 SITE MAP INCLUDES GRIDS THAT FAILED WITH ADEQUATE SOIL COVER, THE RESIDENTIAL RISK CALCULATOR, AND EXCEEDED THE EPA SCREENING LEVEL FOR LEAD. THESE GRIDS WERE SAMPLED DURING RI-6 FOR TCLP AND SPLP FOR COBALT AND LEAD. SOIL SAMPLES WERE COLLECTED ON 10/9/2024 AND 10/10/2024.
 mg/L: MILLIGRAMS PER LITER
 mg/Kg: MILLIGRAMS PER LITER

REFERENCE:
 GIS BASE LAYERS WERE OBTAINED FROM MACKKOGIS 2023. THIS MAP IS FOR INFORMATIONAL PURPOSES ONLY. ALL FEATURE LOCATIONS DISPLAYED ARE APPROXIMATED. THEY ARE NOT BASED ON CIVIL SURVEY INFORMATION, UNLESS STATED OTHERWISE.

- LEGEND**
- ASSESSMENT AREA
 - Soil Boring Locations
 - INSUFFICIENT SOIL COVER (LESS THAN 12-INCHES)
 - LEAD CONCENTRATION EXCEEDS 200 MG/KG - COMPOSITE GRID SAMPLE
 - ▲ LEAD CONCENTRATION EXCEEDS 200 MG/KG - INDIVIDUAL SAMPLE
 - EXCEEDS RISK FOR RESIDENTIAL (UNRESTRICTED) USE - COMPOSITE GRID SAMPLE
 - ▲ EXCEEDS RISK FOR RESIDENTIAL (UNRESTRICTED) USE - INDIVIDUAL SAMPLE



SOIL SAMPLE RESULTS MAP

SOUTHSIDE PARK LANDFILL
 NCDEQ ID NO. NONCD000807 - TASK ORDER 807RI-6
 TOOMEY AVE, CHARLOTTE, MECKLENBURG COUNTY, NORTH CAROLINA

SCALE:
 1 in = 125 ft
 Date:
 10/29/2024
 PROJECT NUMBER
 215952
 FIGURE NO.