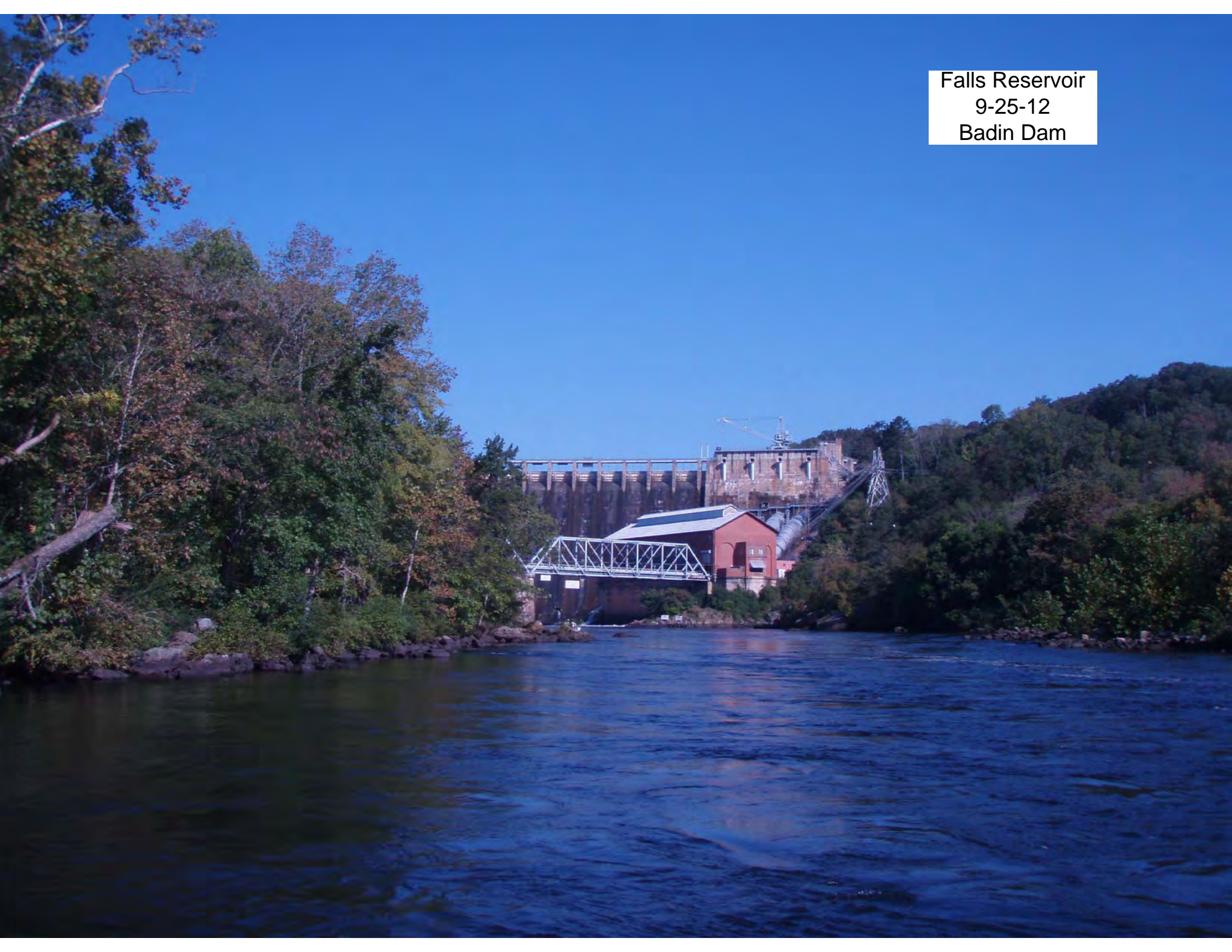
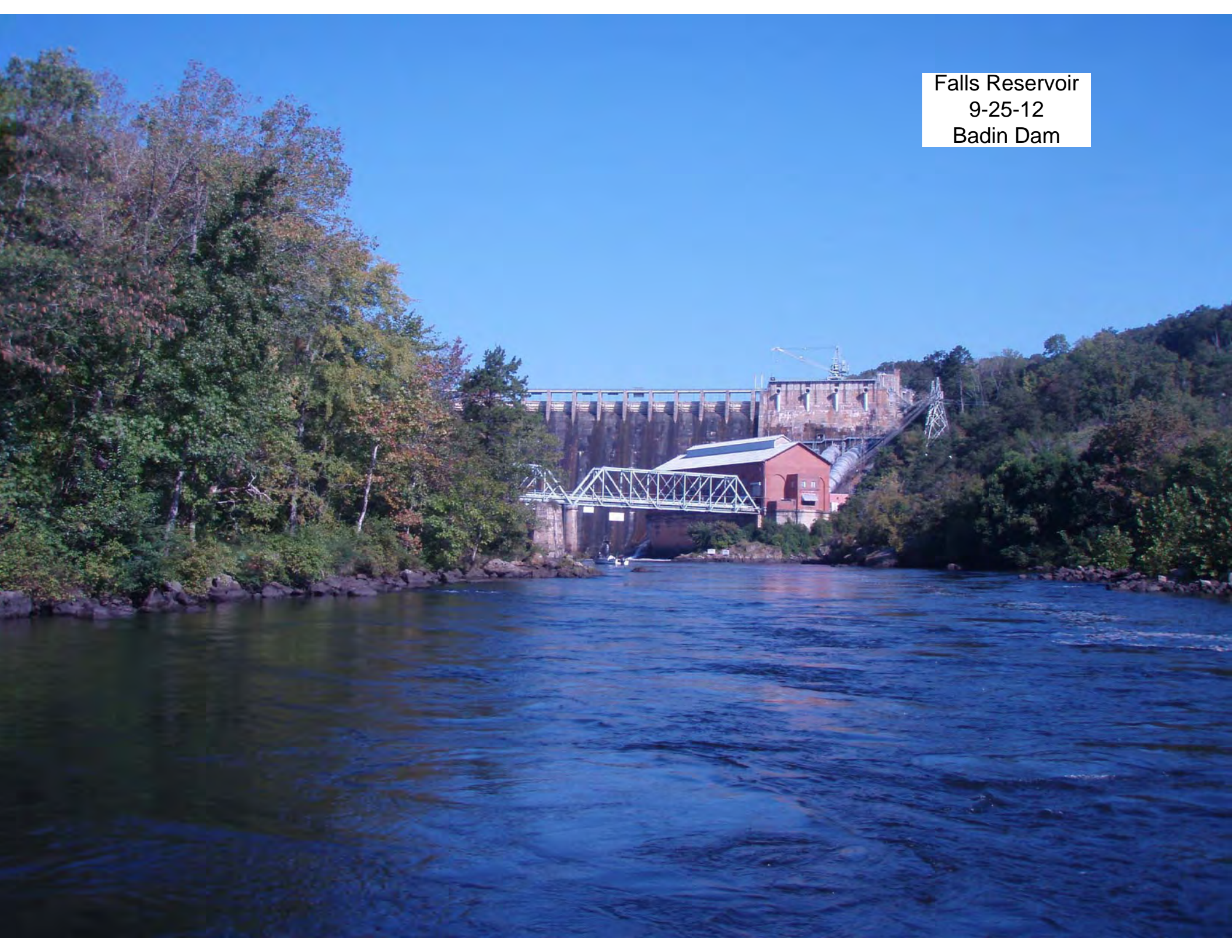


Falls Reservoir  
9-25-12  
Badin Dam



Falls Reservoir  
9-25-12  
Badin Dam



Falls Reservoir 9-25-12  
most upstream island between  
spillway and lake.  
FR-001-SD location



Falls Reservoir  
9-25-12  
near FR-001-SD



Falls Reservoir  
9-25-12  
Rocky shoreline  
near FR-001-SD



Falls Reservoir  
9-25-12  
Rocky shoreline



Falls Reservoir  
9-25-12  
west shoreline  
below Badin dam

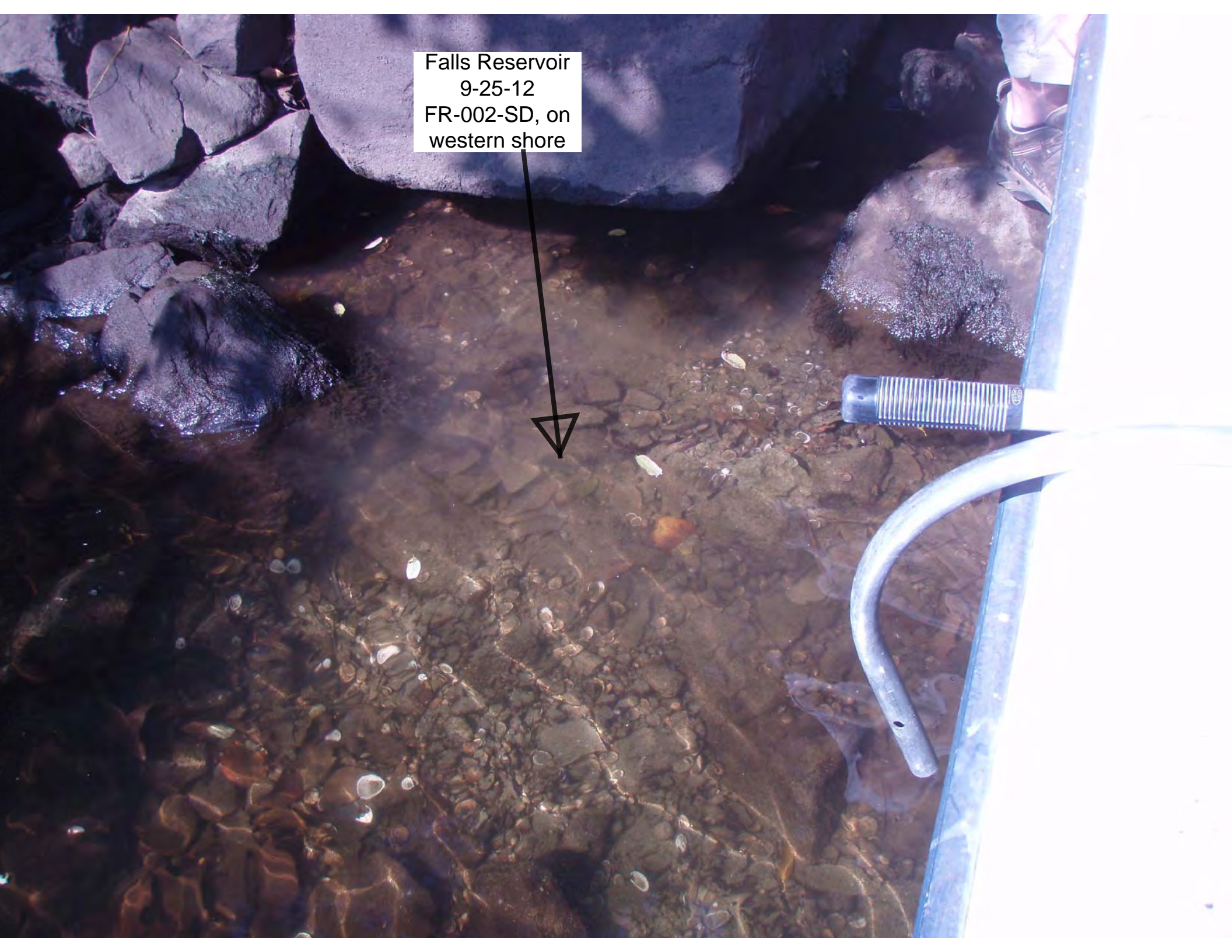


Falls Reservoir  
9-25-12  
FR-002-SD, on  
western shore





Falls Reservoir  
9-25-12  
FR-002-SD, on  
western shore



Falls Reservoir  
9-25-12  
FR-003-SD



Falls Reservoir  
9-25-12  
FR-004-SD  
general location



Falls Reservoir  
9-25-12  
Rocky shoreline



Falls Reservoir  
9-25-12  
campsite on western shore,  
north of cove and boat ramp  
FR-005-SD



Falls Reservoir  
9-25-12  
Small cove on west bank  
FR-005-SD




Falls Reservoir  
9-25-12  
Small cove on west bank  
FR-005-SD



Falls Reservoir  
9-25-12  
Uwharrie access, east bank  
FR-006-SD







Falls Reservoir  
9-25-12  
Uwharrie access, east bank  
FR-006-SD

Falls Reservoir

9-25-12

Uwharrie access, east bank

FR-006-SD



Falls Reservoir  
9-25-12  
small cove on west bank, north of  
boat ramp cove  
FR-007-SD

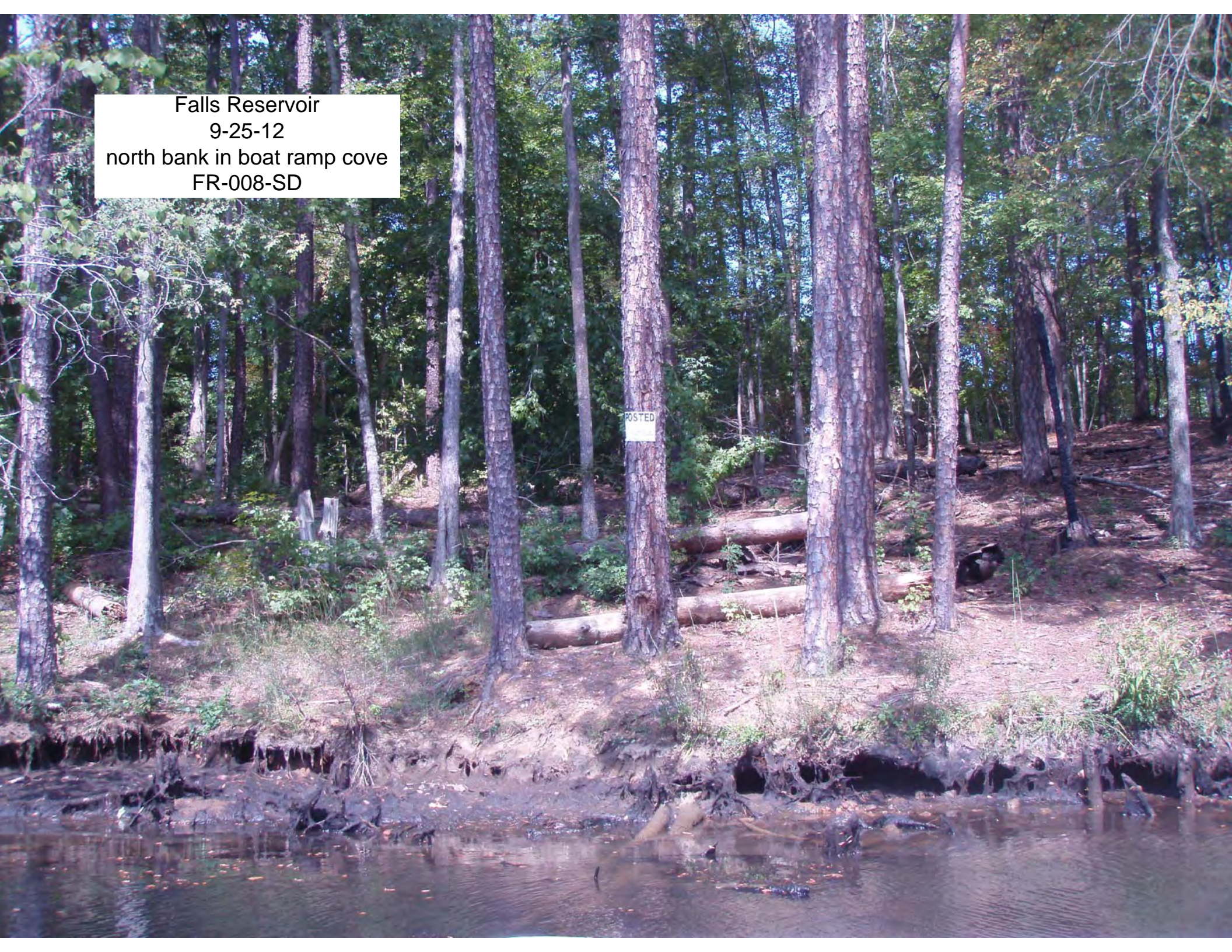


Falls Reservoir  
9-25-12  
north bank in boat ramp cove  
FR-008-SD



Falls Reservoir  
9-25-12  
north bank in boat ramp cove  
FR-008-SD

POSTED



Falls Reservoir  
9-25-12  
south bank in boat ramp cove  
FR-009-SD



Falls Reservoir 9-25-12  
near FR-009-SD  
south shore of boat launch cove



Falls Reservoir 9-25-12  
Attempts to collect sediment in lake center





Falls Reservoir  
9-25-12  
rocky shoreline, west  
bank below cove



Falls Reservoir  
9-25-12



Falls Reservoir  
9-25-12



Falls Reservoir  
9-25-12



Falls Reservoir 9-25-12  
east shore, upstream of dam  
no sediment collected -- all pebbles

