

# Davidson Community Asbestos Site, Davidson, Mecklenburg County, NC



**WELCOME** we will be starting soon!

If you have questions, please enter  
them in the chat box.

If you called in, you may text your  
questions to 704-266-2489.



# Davidson Community Asbestos Site, Davidson, Mecklenburg County, NC



## AGENDA

Welcome

Introductions

Presentation

Question and Answer Session



# Davidson Community Asbestos Site, Davidson, Mecklenburg County, NC



Angela Miller, EPA Community Involvement Coordinator

Chris Tripp, EPA On-Scene Coordinator

Courtney Swanson, EPA On-Scene Coordinator

Tim Frederick, EPA Risk Assessor

David Reed, EPA contractor with Tetra Tech

Miguel Alvalle, P.G., DEQ

Doug Wright, Town of Davidson



# Davidson Community Asbestos Site, Davidson, Mecklenburg County, NC



## Background history on the Asbestos Mill

- Operated from the late 1920s to early 1970s
- Manufactured asbestos fabric, tile, and shingles
- Waste material disposed of on site
- No access controls at former mill
- 1980s – After complaints from residents Mecklenburg County Health Dept. required the owner to cap the disposal area



# Davidson Community Asbestos Site, Davidson, Mecklenburg County, NC



September 2016 – Developer hosted a public meeting to discuss Davidson Depot plans with Town of Davidson

Citizens in attendance raised concern about asbestos contamination on their properties

In response to the citizens' concerns, the North Carolina Department of Environmental Quality (NC DEQ) requested that EPA conduct a Removal Site Evaluation (RSE) of the properties surrounding the former mill



# Davidson Community Asbestos Site, Davidson, Mecklenburg County, NC



EPA developed a sampling strategy to assess surface soils and shallow subsurface (0'' to 3'' and 3'' to 6'' below ground surface)

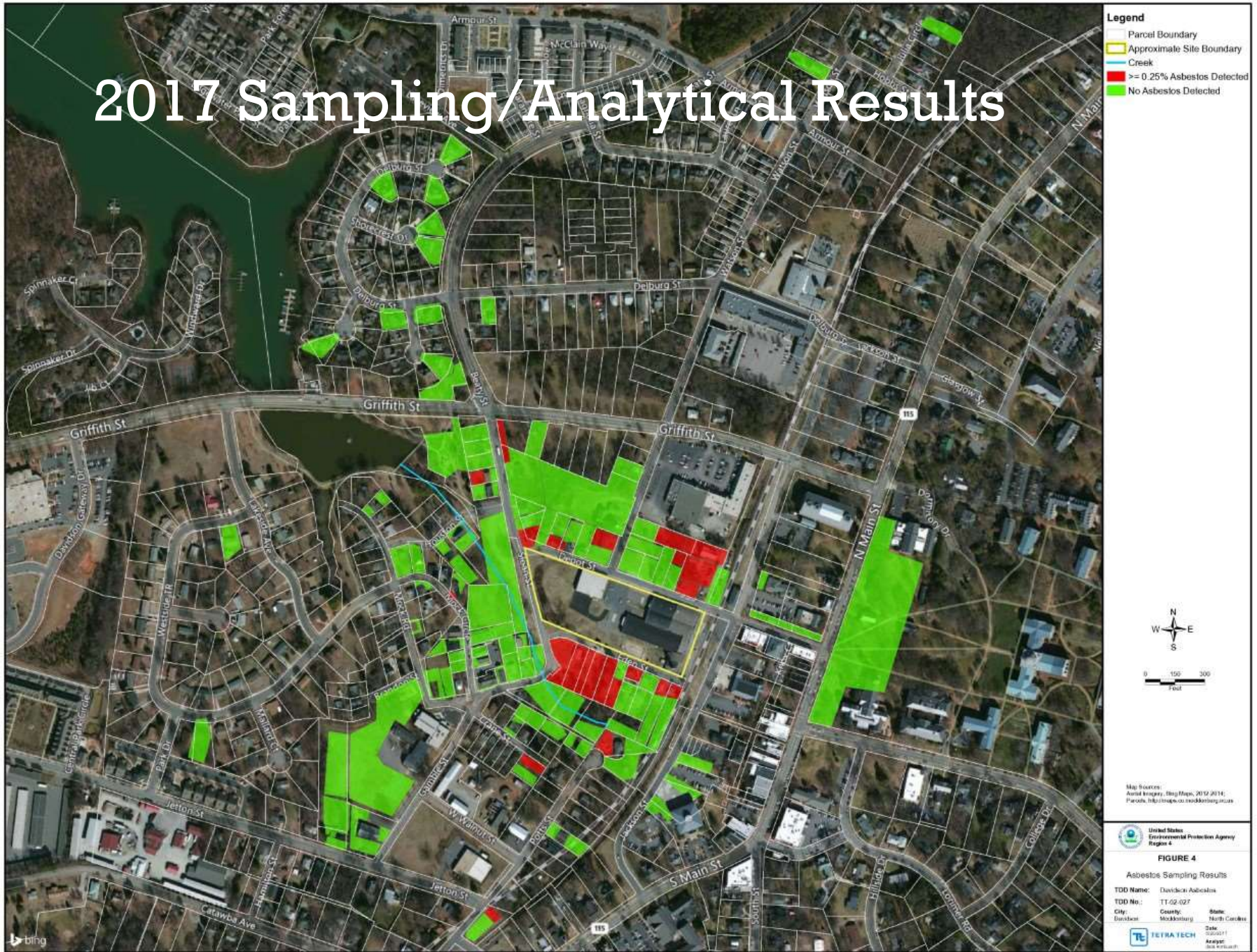
EPA began collecting samples on residential properties and public areas in close proximity to the former asbestos mill







# 2017 Sampling/Analytical Results





# Davidson Community Asbestos Site, Davidson, Mecklenburg County, NC



## 2016/2017 Sampling Summary Table:

	Sampling areas/ parcels	Number of samples collected	Non- Detect	Trace	0.25-1%	Greater than 1%	Parcels where EPA observed bulk asbestos-containing material
<b>TOTAL</b>	93	323	257	50	18	7	17



# Davidson Community Asbestos Site, Davidson, Mecklenburg County, NC



Excavated 32 properties

Temporary relocation was offered

Total of 6,204 tons of soil excavated and  
disposed

\$1.7 million was spent



# Davidson Community Asbestos Site, Davidson, Mecklenburg County, NC

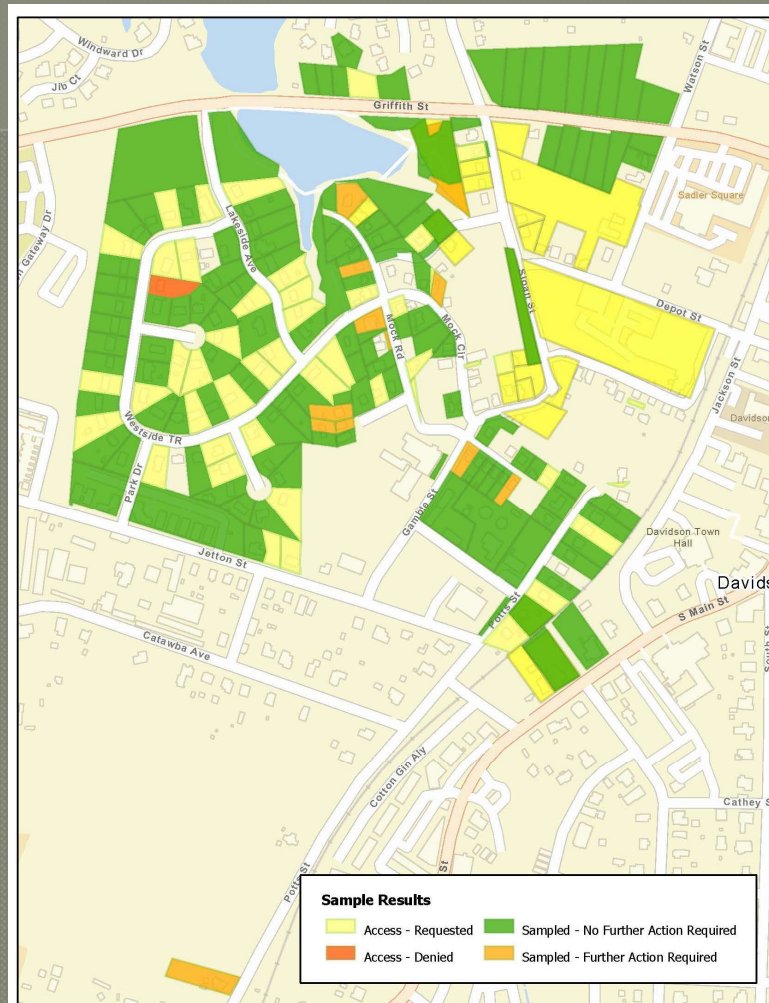


Expanded sampling area – as a result of  
community concern

A few properties left to sample within this  
area, if property access is given by  
property owner



# Davidson Community Asbestos Site, Davidson, Mecklenburg County, NC Updated Map (as of 1/21/21)





# Davidson Community Asbestos Site, Davidson, Mecklenburg County, NC



## 2020 Sampling Summary

- 136 parcels sampled
- 521 soil samples collected
- 6 bulk material samples
- 125 parcels require No Further Action
- 11 parcels met the criteria for an EPA Removal Action
- 5 parcel interim mitigation measures applied



# Davidson Community Asbestos Site, Davidson, Mecklenburg County, NC



## **Roosevelt Wilson Park**

- Park will be closed during asbestos removal process
- Air monitoring will be conducted throughout the park removal



# Davidson Community Asbestos Site, Davidson, Mecklenburg County, NC



The Removal Action will include:

- Dust suppression (wetting) of contaminated soils
- Excavating the soil
- Removal confirmation soil sampling
- Install notification barrier (snow fencing)
- Replacing with clean fill
- Topping the areas with sod
- Restoring areas to original condition within reason

Air sampling will be conducted during excavation



# Davidson Community Asbestos Site, Davidson, Mecklenburg County, NC



Driveways with visible asbestos material will be removed and replaced with similar material

Asbestos contaminated soils and materials will be staged until properly transported and disposed of at an EPA approved off-site facility

Staged soils will be on top of a barrier and covered

Perimeter air sampling will be conducted around staged area



# Davidson Community Asbestos Site, Davidson, Mecklenburg County, NC



Temporary relocation will be offered to residents at or adjacent to the removal property

EPA will meet with these residents one-on-one to discuss the details.



# Davidson Community Asbestos Site, Davidson, Mecklenburg County, NC



## **Worker Protective Measures**

- There will be personal air sampling taking place for EPA contractors performing soil removal work at properties.
- All EPA contractors will be wearing appropriate Personal Protective Equipment when working at properties.
- All work will be performed under approved Health and Safety Plans.



# Davidson Community Asbestos Site, Davidson, Mecklenburg County, NC





# Davidson Community Asbestos Site, Davidson, Mecklenburg County, NC



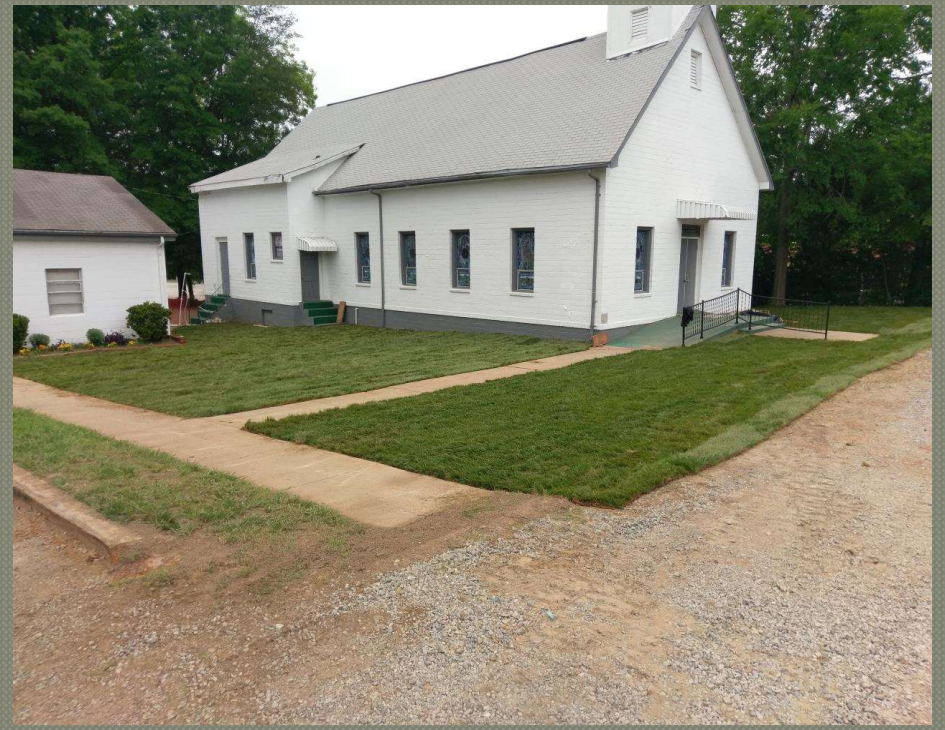


# Davidson Community Asbestos Site, Davidson, Mecklenburg County, NC





# Davidson Community Asbestos Site, Davidson, Mecklenburg County, NC





# Davidson Community Asbestos Site, Davidson, Mecklenburg County, NC





# Davidson Community Asbestos Site, Davidson, Mecklenburg County, NC



Field prep work to begin first of February

Removal to begin in early February

EPA anticipates the project to last  
approximately 6 to 8 weeks



# Davidson Community Asbestos Site, Davidson, Mecklenburg County, NC



## EPA Contact Information

**Angela Miller, EPA**

Community Involvement Coordinator

678-575-8132

[miller.angela@epa.gov](mailto:miller.angela@epa.gov)

**Chris Tripp, EPA**

On-Scene Coordinator

404-562-8745

[tripp.christopher@epa.gov](mailto:tripp.christopher@epa.gov)

**Courtney Swanson, EPA**

On-Scene Coordinator

404-562-8753

[swanson.courtney@epa.gov](mailto:swanson.courtney@epa.gov)



# Davidson Community Asbestos Site, Davidson, Mecklenburg County, NC



## DEQ Contact Information

**Miguel Alvalle, DEQ**

704-663-1699

Miguel.Alvalle@ncdenr.gov

**Laura Leonard, DEQ PIO**

919-280-0544

Laura.leonard@ncdenr.gov



# Davidson Community Asbestos Site, Davidson, Mecklenburg County, NC



## Town of Davidson Contact Information

**Doug Wright, Project Manager**

704-940-9625

[dwright@townofdavidson.org](mailto:dwright@townofdavidson.org)



# Davidson Community Asbestos Site, Davidson, Mecklenburg County, NC



## NC DHHS Contact Information

For materials on exposure to asbestos:

919-707-5900 or visit [nchace@dhhs.nc.gov](mailto:nchace@dhhs.nc.gov)



# Davidson Community Asbestos Site, Davidson, Mecklenburg County, NC



**Additional Site Information at US EPA Weblink:**

**[https://response.epa.gov/site/site\\_profile.aspx?site\\_id=14755](https://response.epa.gov/site/site_profile.aspx?site_id=14755)**

**Additional Site Information at Town of Davidson Weblink:**

**<http://www.ci.davidson.nc.us/1159/Asbestos>**

**Additional Site Information at NC DEQ Weblink:**

**<https://deq.nc.gov/about/divisions/waste-management/superfund-section/inactive-hazardous-sites-program/davidson>**



Davidson Community Asbestos Site,  
Davidson, Mecklenburg County, NC



# Questions and Answers

Text questions to  
704-266-2489