

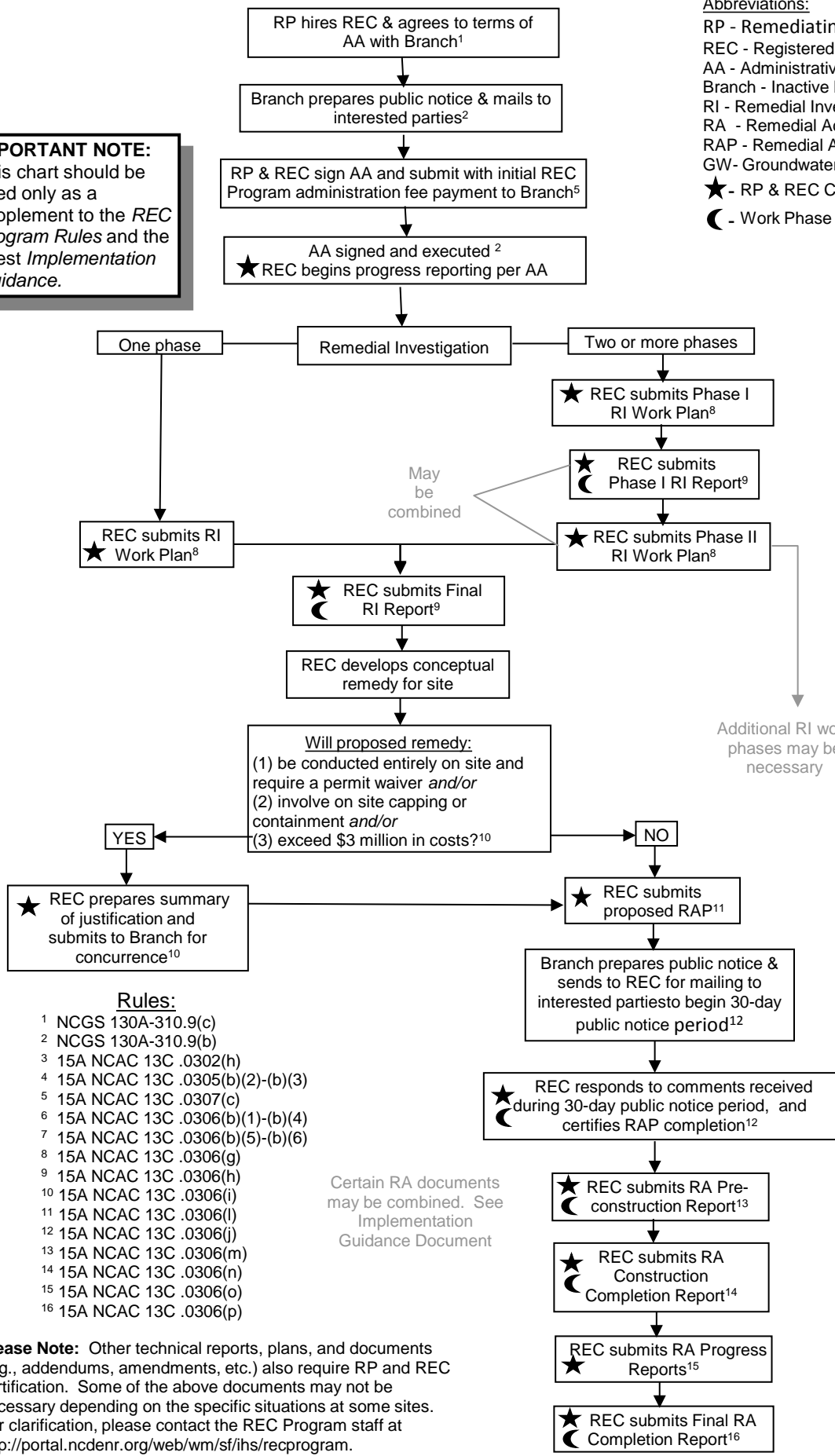
REC PROGRAM SITE CLEANUP PROCESS OVERVIEW

Rev. 1/2/18

IMPORTANT NOTE:
This chart should be used only as a supplement to the REC Program Rules and the latest Implementation Guidance.

Abbreviations:

- RP - Remediating Party
- REC - Registered Environmental Consultant
- AA - Administrative Agreement
- Branch - Inactive Hazardous Sites Branch
- RI - Remedial Investigation
- RA - Remedial Action
- RAP - Remedial Action Plan
- GW - Groundwater
- ★ - RP & REC Certified⁶
- ☾ - Work Phase Completion Certification⁷



Timeline (Milestones)

- **0 Years** - (AA Execution, begin Quarterly Letter Progress Reports [see AA for any adjusted frequency])
- **3 Years**³ - (RI certified as complete)
- **2 Years after RI Completion**³ - (GW Remediation Initiated)
- **8 Years after AA**³ - (Non-GW Remediation Completed)

****Please Note****
Discovery of:
(a) imminent hazards;
(b) migration of contaminants to adjoining property;
(c) sensitive environments; and/or
(d) commingled radioactive and chemical wastes
must be reported to the Branch within **24 hours**⁴

Rules:

- ¹ NCGS 130A-310.9(c)
- ² NCGS 130A-310.9(b)
- ³ 15A NCAC 13C .0302(h)
- ⁴ 15A NCAC 13C .0305(b)(2)-(b)(3)
- ⁵ 15A NCAC 13C .0307(c)
- ⁶ 15A NCAC 13C .0306(b)(1)-(b)(4)
- ⁷ 15A NCAC 13C .0306(b)(5)-(b)(6)
- ⁸ 15A NCAC 13C .0306(g)
- ⁹ 15A NCAC 13C .0306(h)
- ¹⁰ 15A NCAC 13C .0306(i)
- ¹¹ 15A NCAC 13C .0306(l)
- ¹² 15A NCAC 13C .0306(j)
- ¹³ 15A NCAC 13C .0306(m)
- ¹⁴ 15A NCAC 13C .0306(n)
- ¹⁵ 15A NCAC 13C .0306(o)
- ¹⁶ 15A NCAC 13C .0306(p)

Certain RA documents may be combined. See Implementation Guidance Document

Please Note: Other technical reports, plans, and documents (e.g., addendums, amendments, etc.) also require RP and REC certification. Some of the above documents may not be necessary depending on the specific situations at some sites. For clarification, please contact the REC Program staff at <http://portal.ncdenr.gov/web/wm/sf/ihs/recprogram>.