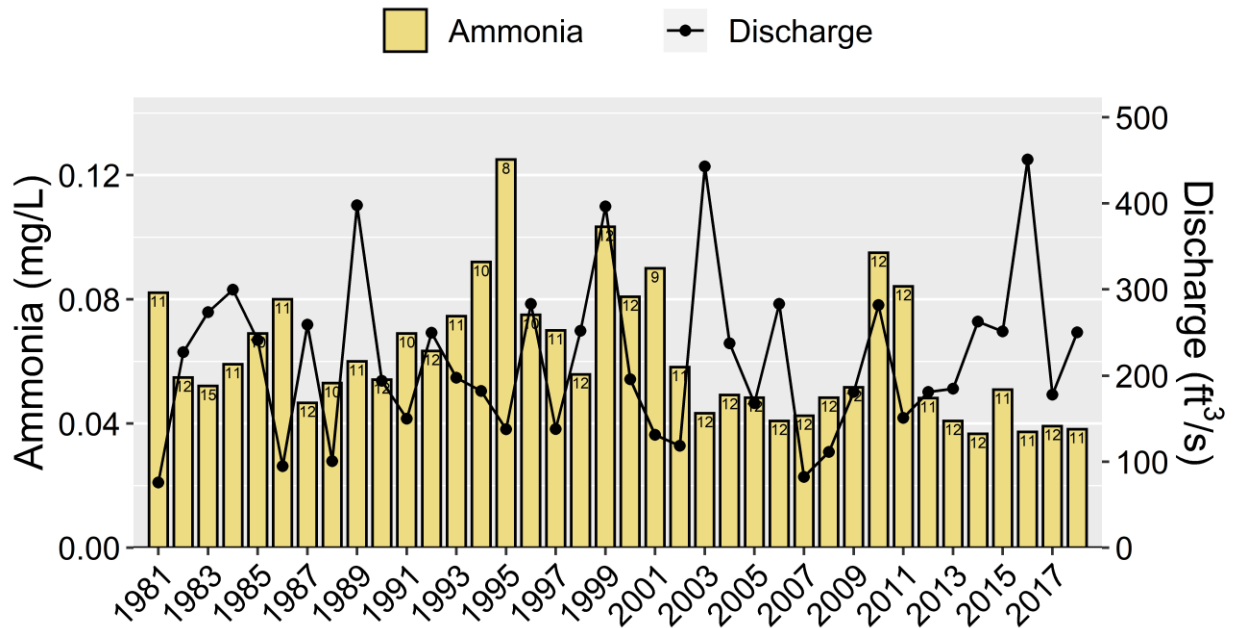


POTECASI CREEK AT NC 11 NEAR UNION Ambient Monitoring Station Water Quality Data with the Number of Samples Collected inside the Bar and Potecasi Creek Discharge from USGS Gage: 02053200.

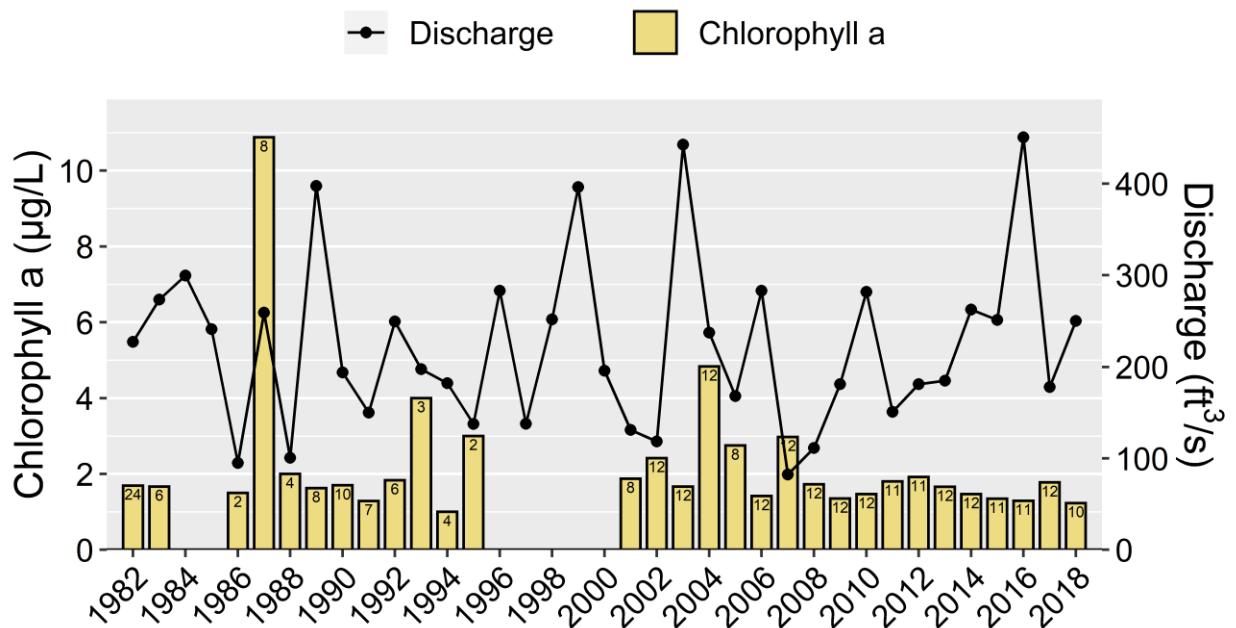
D4150000

Yearly Average Values

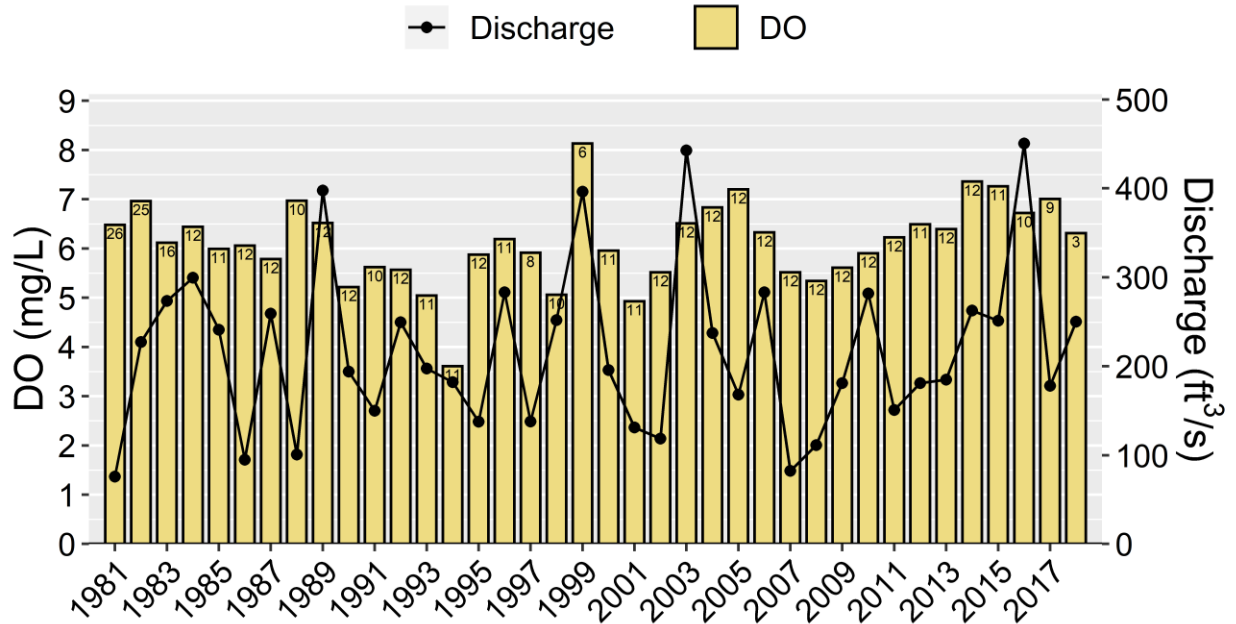


D4150000

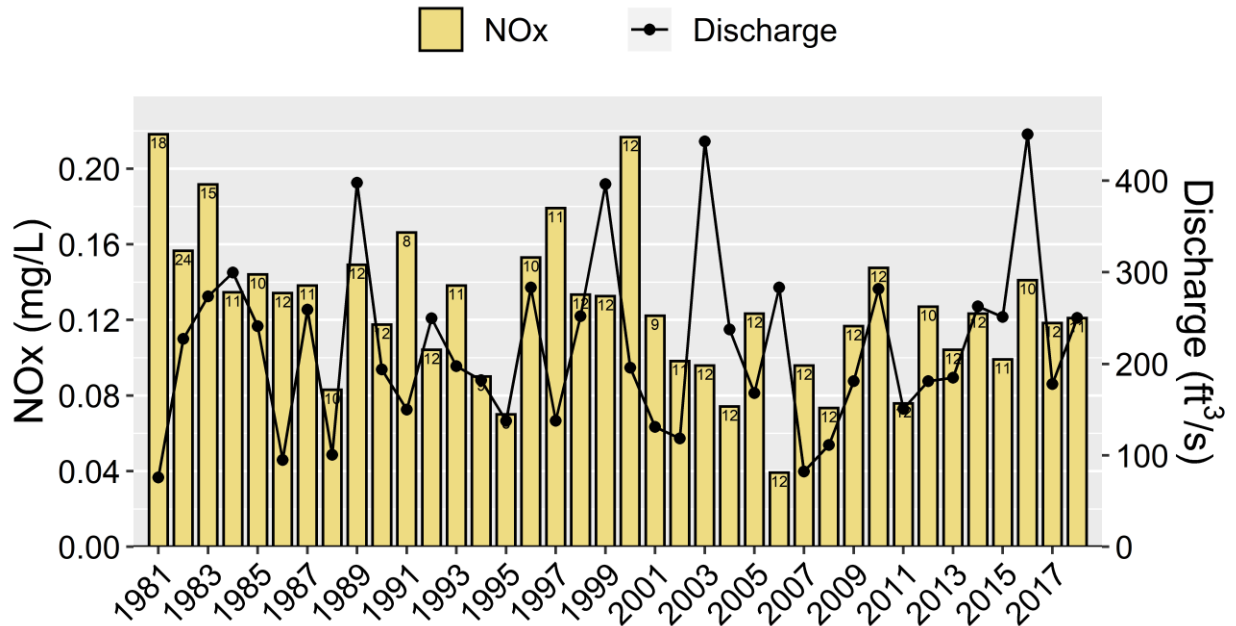
Yearly Average Values



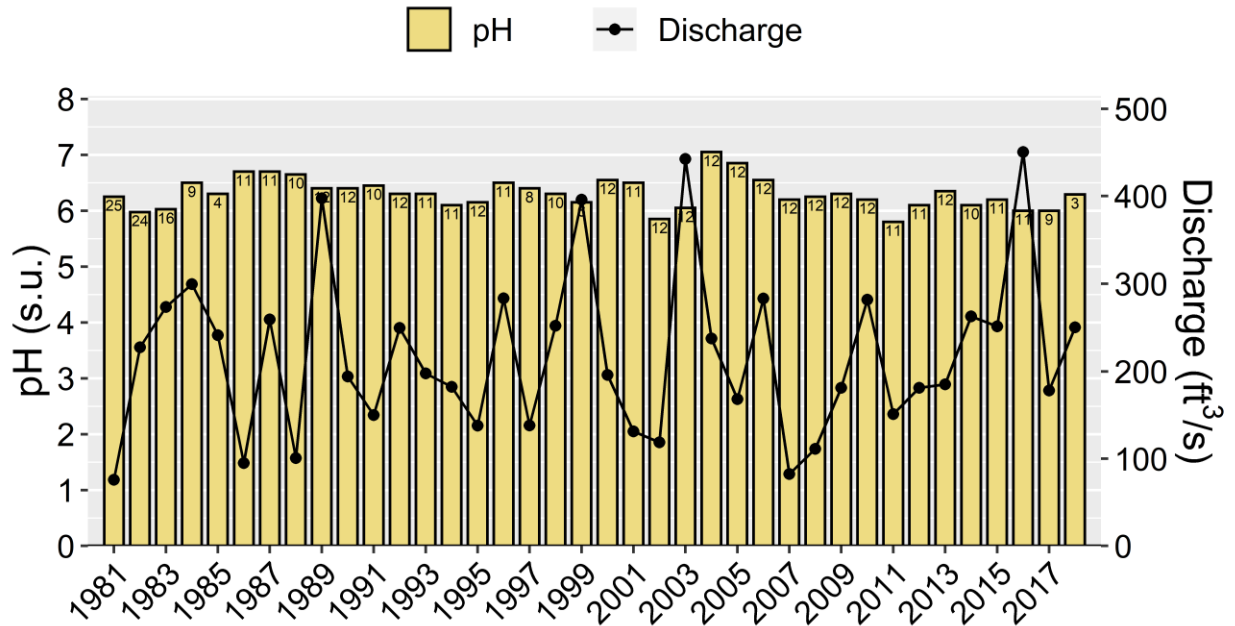
D4150000
Yearly Average Values



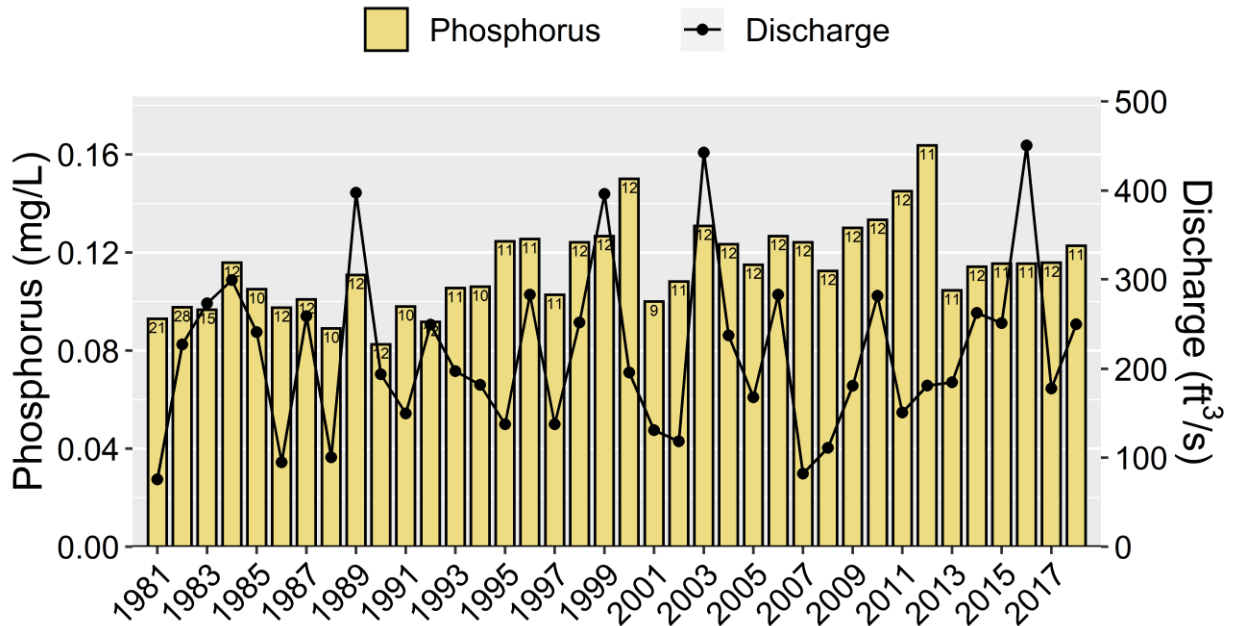
D4150000
Yearly Average Values



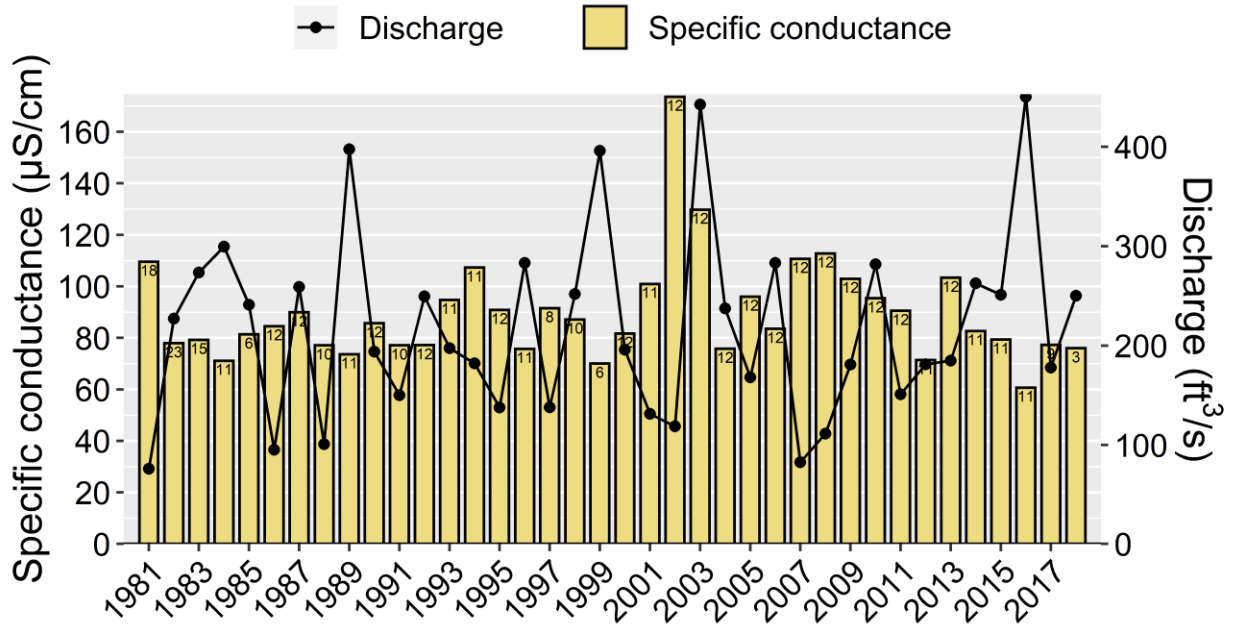
D4150000
Yearly Median Values



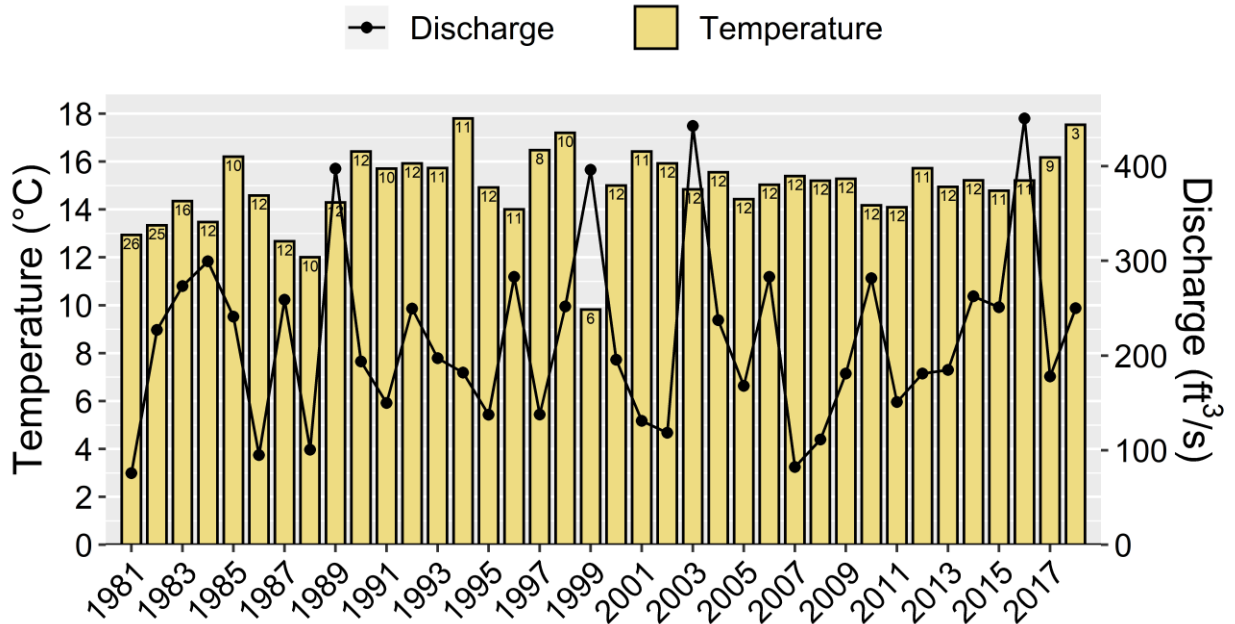
D4150000
Yearly Average Values



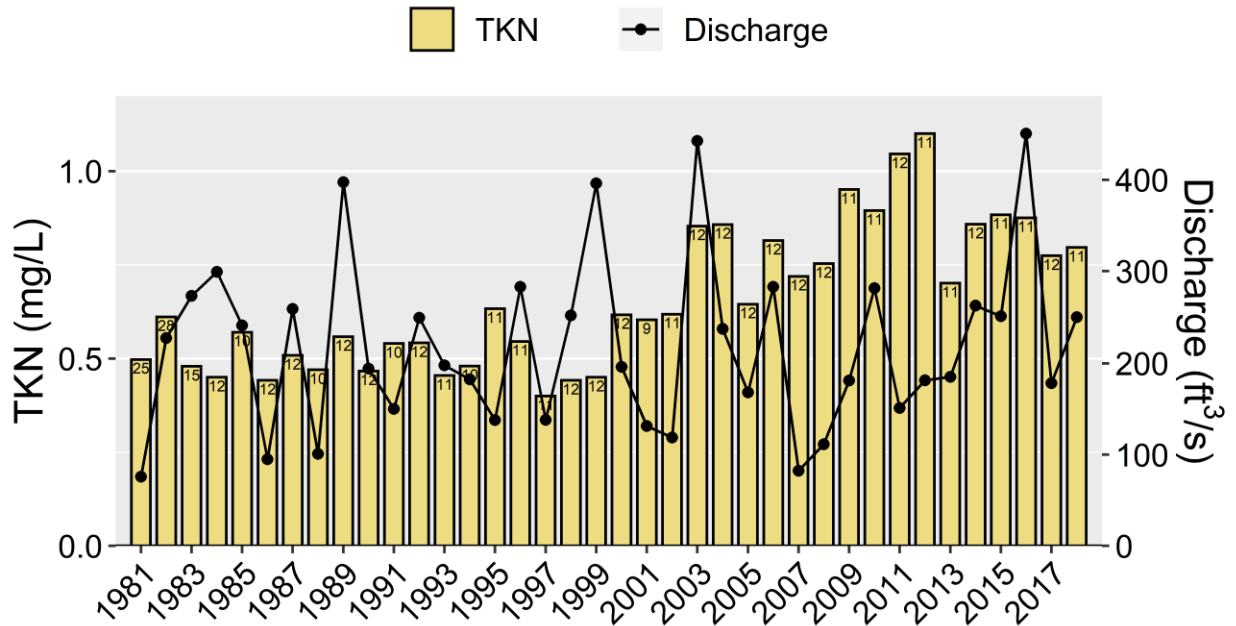
D4150000
Yearly Average Values



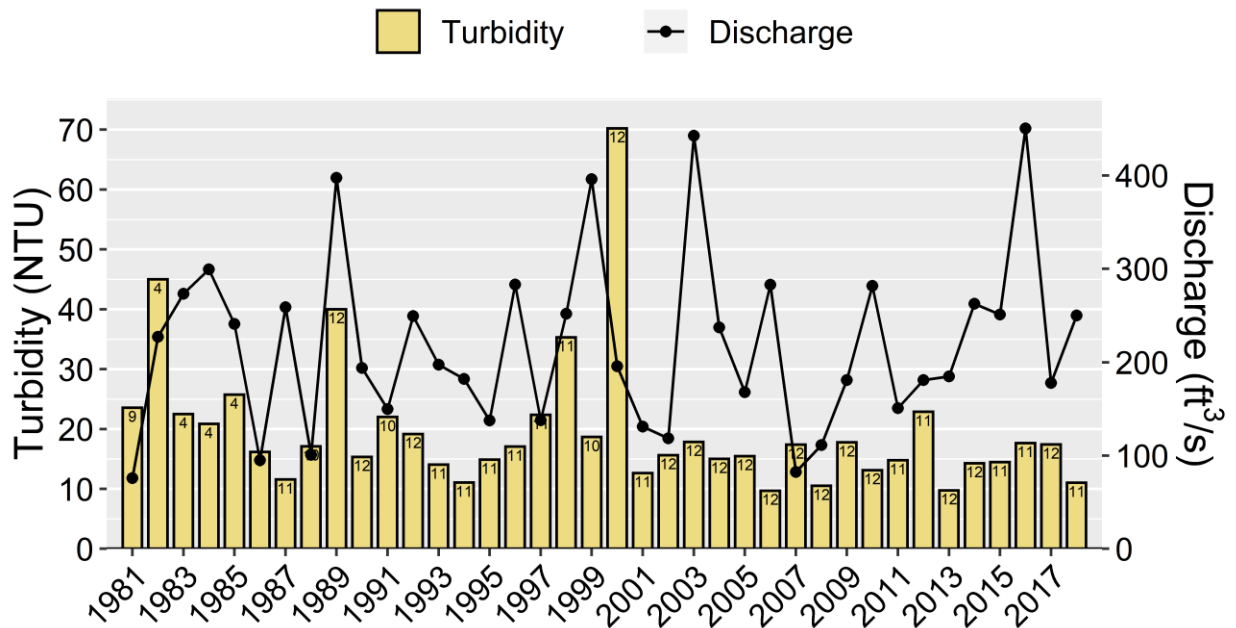
D4150000
Yearly Average Values



D4150000
Yearly Average Values

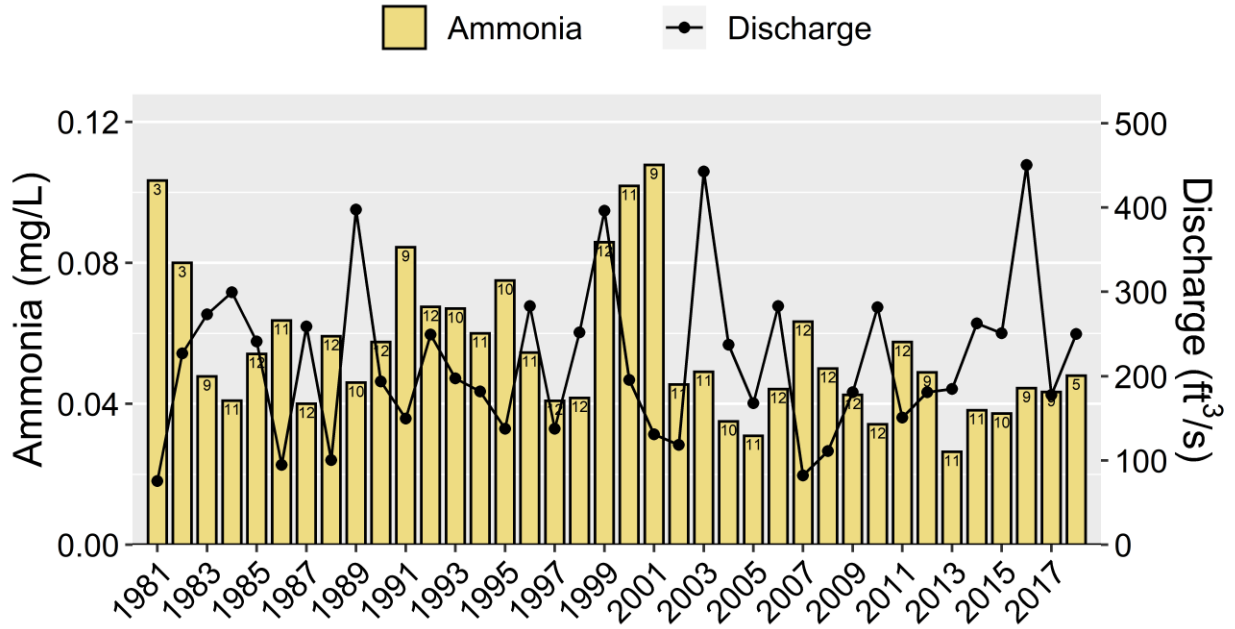


D4150000
Yearly Average Values

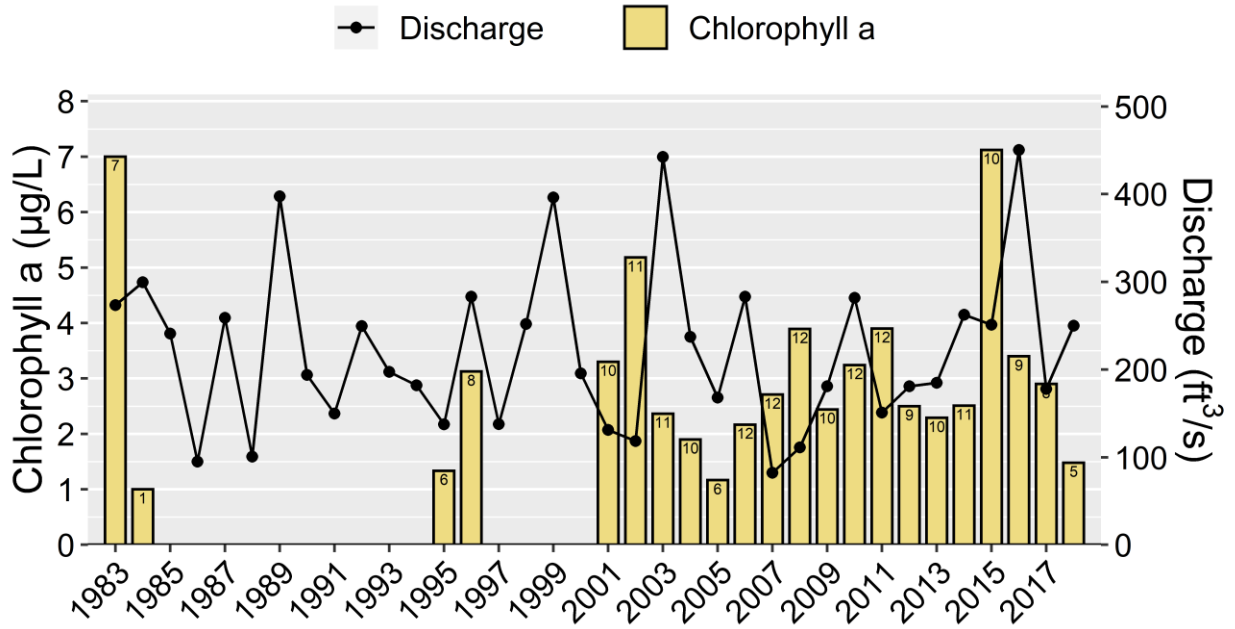


MEHERRIN RIVER AT SECONDARY ROAD 1175 PARKERS FERRY NEAR COMO Ambient Monitoring Station
 Water Quality Data with the Number of Samples Collected inside the Bar and Potecasi Creek Discharge
 from USGS Gage: 02053200.

D5000000
 Yearly Average Values

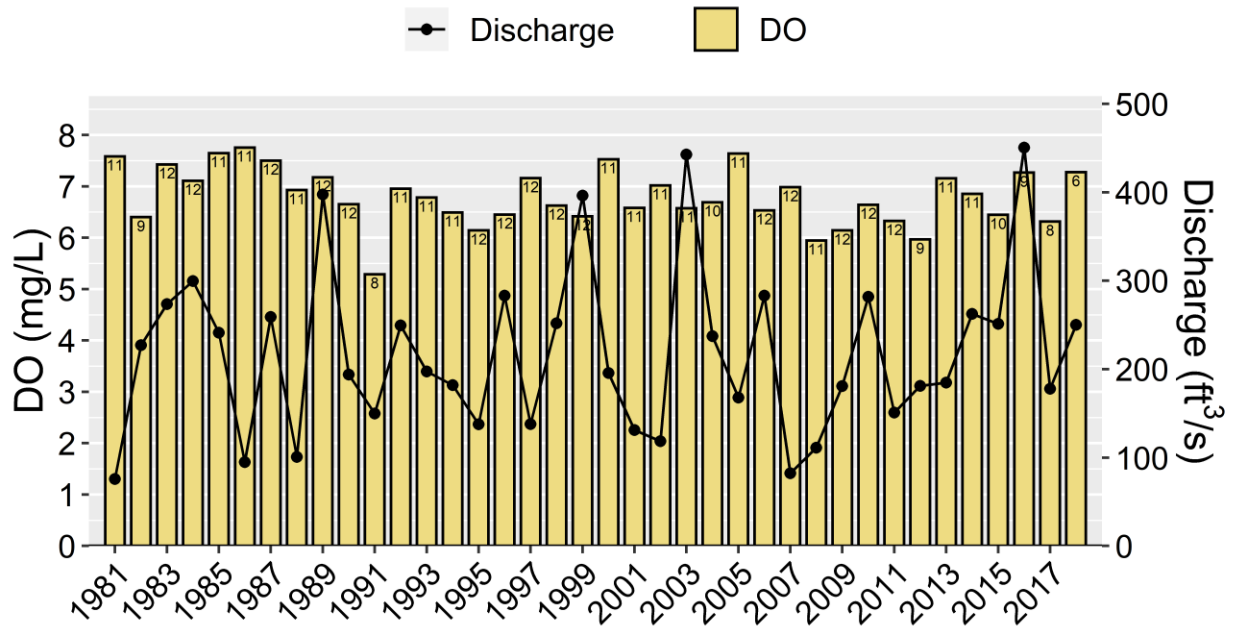


D5000000
 Yearly Average Values



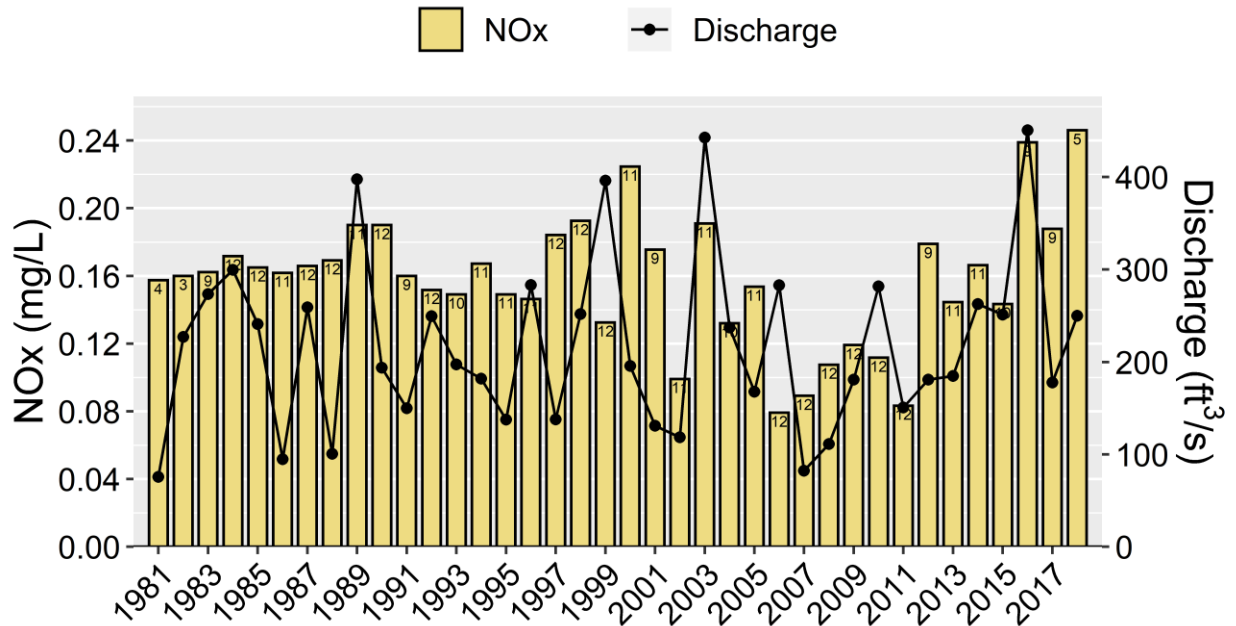
D5000000

Yearly Average Values

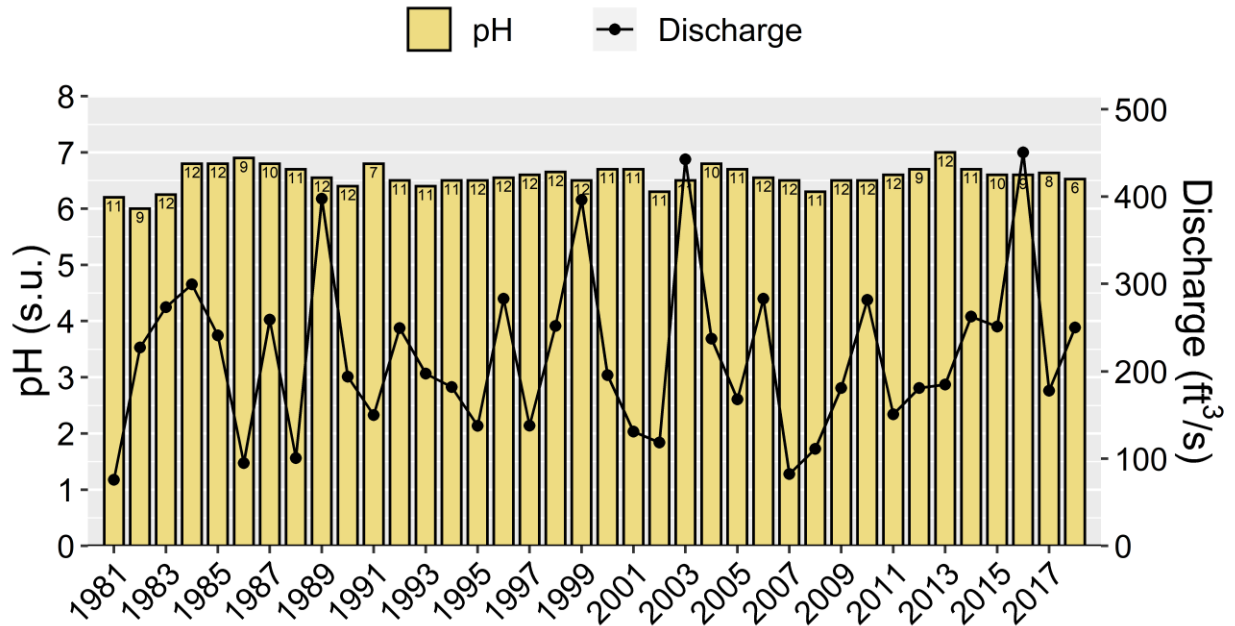


D5000000

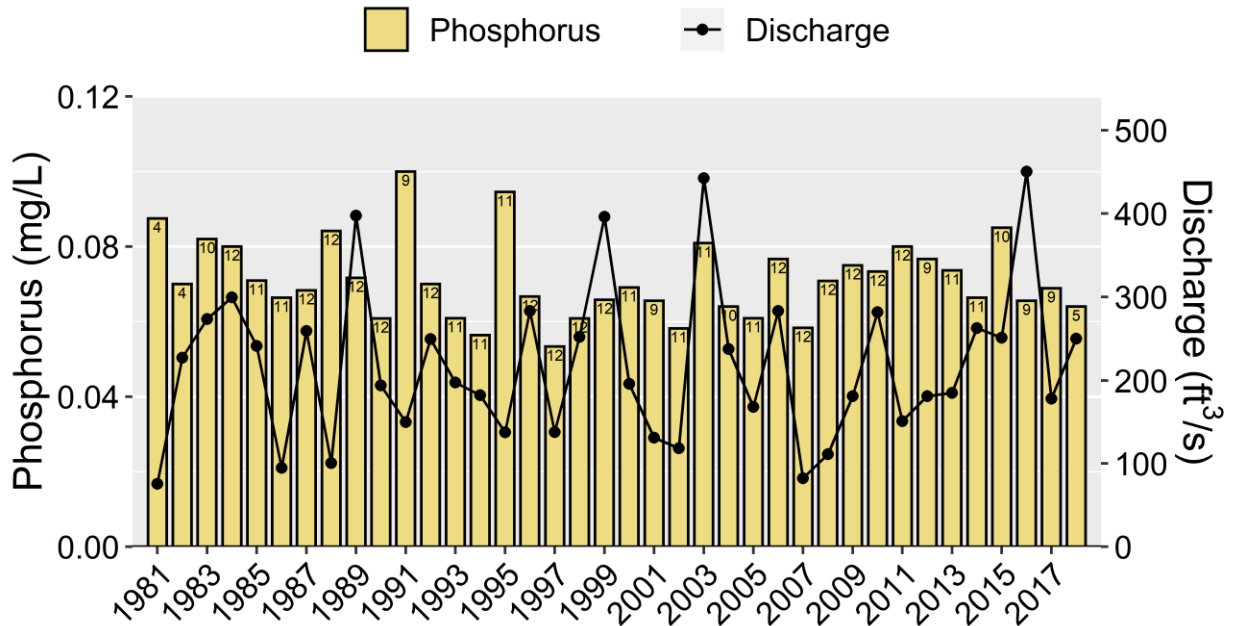
Yearly Average Values

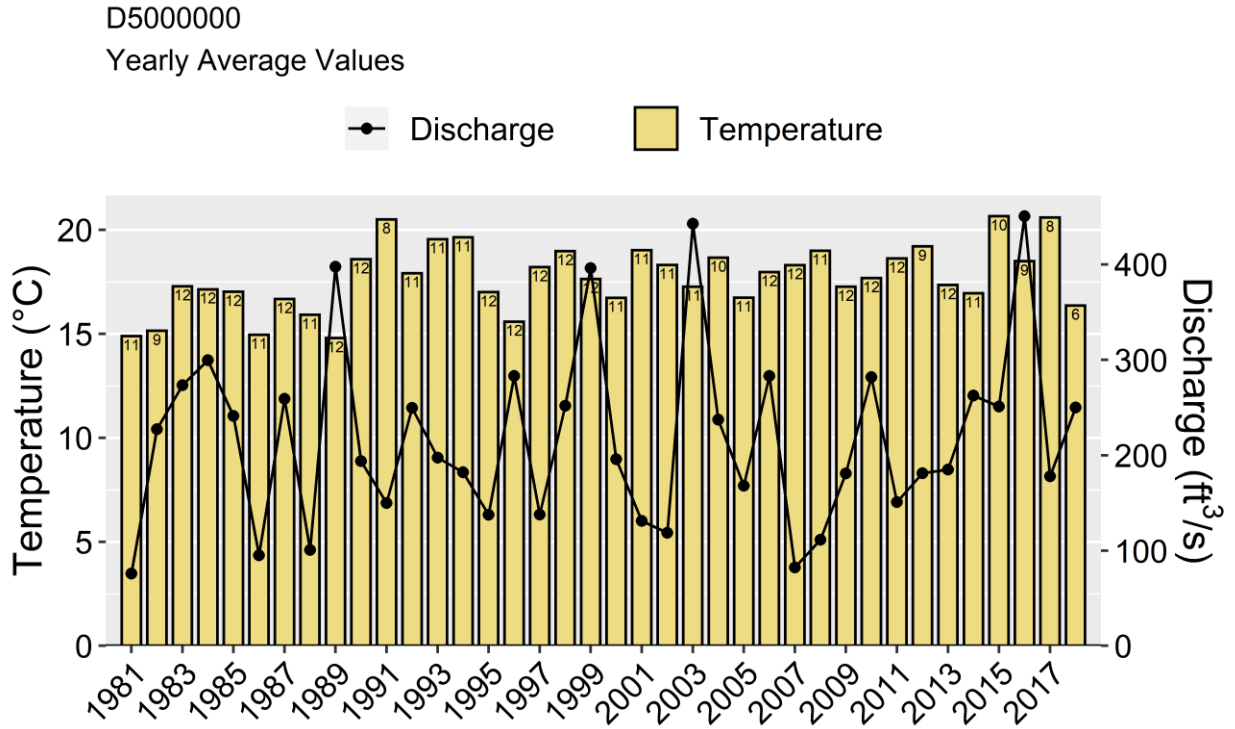
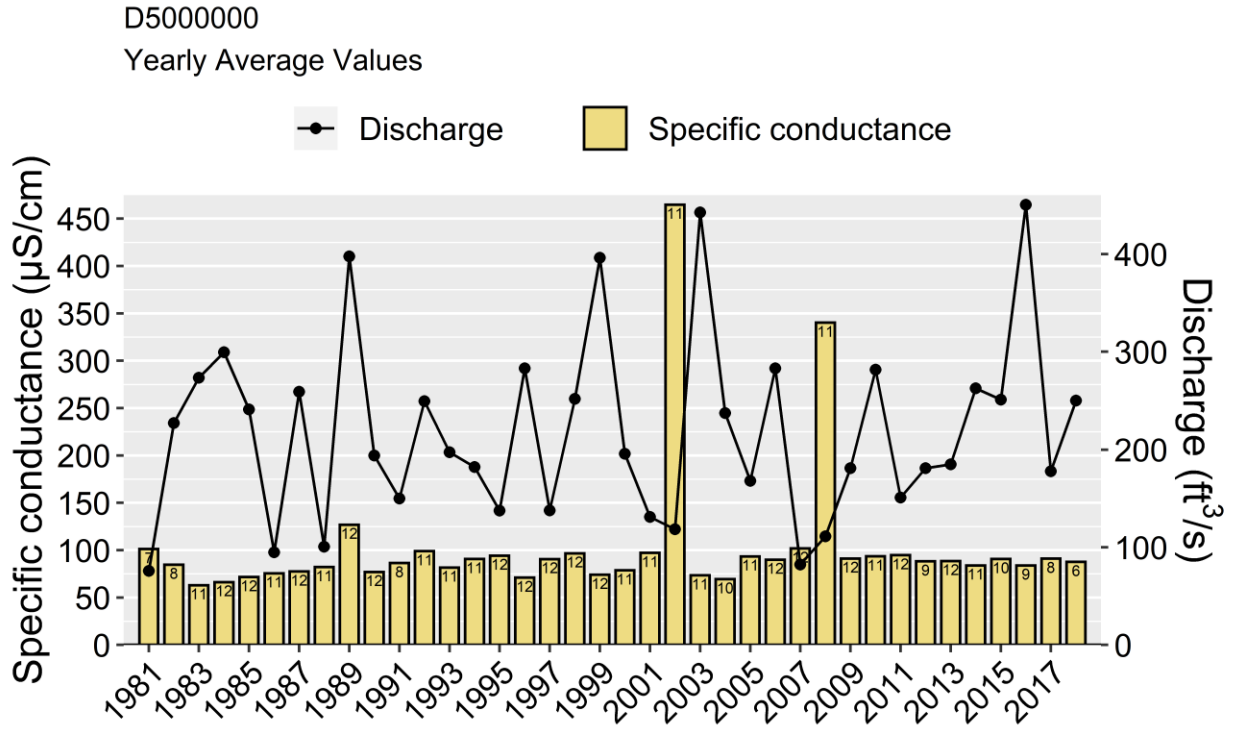


D5000000
Yearly Median Values

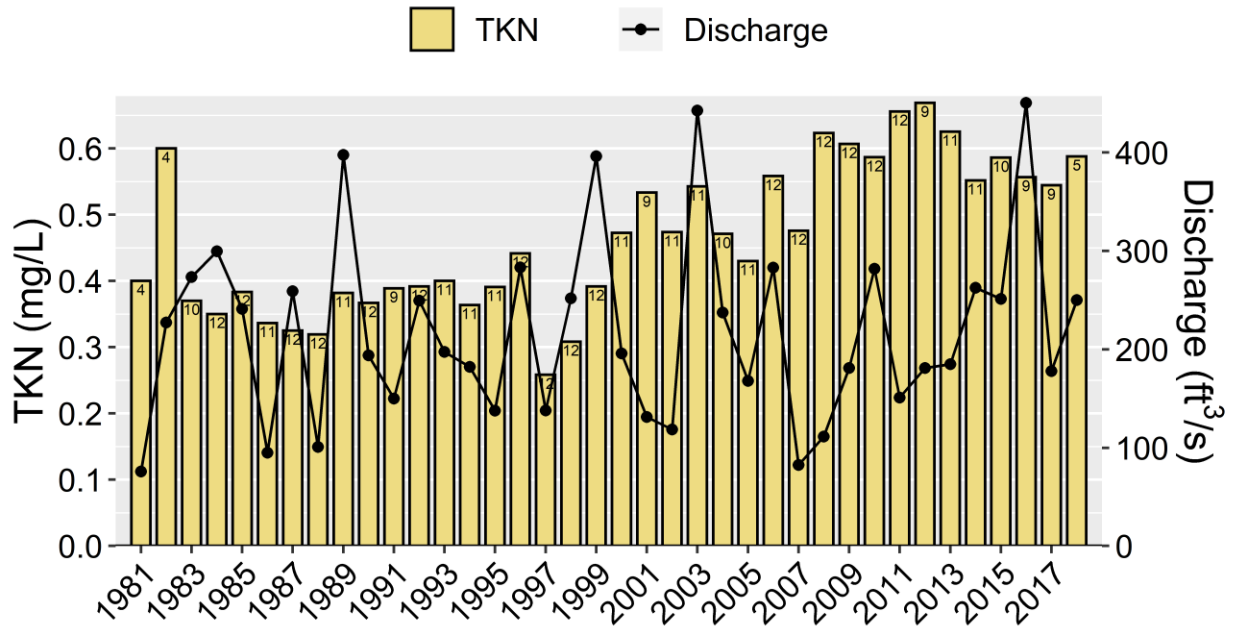


D5000000
Yearly Average Values





D5000000
Yearly Average Values



D5000000
Yearly Average Values

