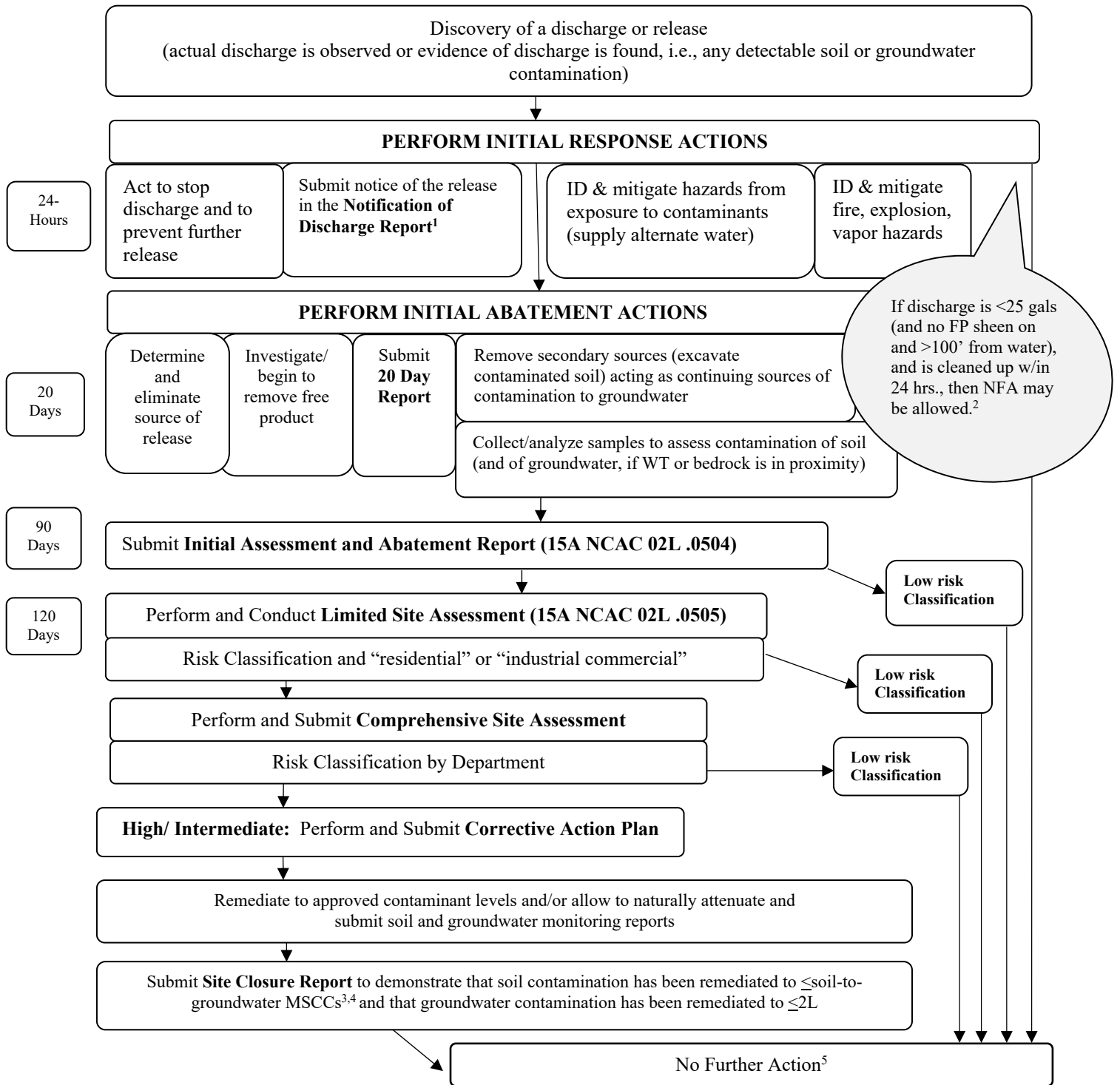


Flowchart of Requirements for Non-UST Releases of Petroleum



1. If the discharge is ≥ 25 gals (etc.), a Notification of Discharge is required, followed by initial abatement actions, etc.
2. If the discharge is ≤ 25 gals (etc.), but is not cleaned up within 24 hours, a Notification of Discharge is required
3. Use the approved analytical methods listed in Table 6 - Approved Soil Analyses Methods for Non-Petroleum UST Closures and Release Investigations and Table 7 - Approved Groundwater Analyses Methods for Non-Petroleum UST Closures and Release Investigations.
4. If no established soil-to-groundwater MSCC exists for a contaminant in soil, then the default concentration limit is the PQL, contact the UST Section for further information.
5. A NFA designation may require land use restrictions (Notice of Residual Petroleum) under risk-based closure.