

Catawba River Basin 2013
Basinwide Assessment Report
Whole Effluent Toxicity Program
2008-2012

The Division of Water Resource’s Whole Effluent Toxicity Monitoring Program

Acute and/or chronic toxicity tests are used to determine toxicity of discharges to sensitive aquatic species (usually fathead minnow, *Pimephales promelas* or the water flea, *Ceriodaphnia dubia*). Results of these tests have been shown by researchers to be predictive of discharge impacts to receiving stream populations.

Many facilities are required to monitor whole effluent toxicity (WET) by their NPDES permit. Facilities without monitoring requirements may have their effluents evaluated for toxicity by DWR’s Aquatic Toxicology Laboratory. If toxicity is detected, DWR may require aquatic toxicity testing upon permit renewal.

DWR’s Aquatic Toxicology Branch maintains a compliance summary for all facilities required to perform tests and provides a monthly update of this information to Regional Offices and DWR administration. Ambient toxicity tests can be used to evaluate stream water quality relative to other stream sites and/or a point source discharge. All facilities are compliant for the 5-year basin cycle for the period of 2008-2012.

WET Monitoring in the Catawba River Basin – 2008-2012

Eighty-eight facility permits in the Catawba River basin currently require whole effluent toxicity (WET) monitoring (Figure 1a and 1b). While eighty-three facility permits have a WET limit, the other five facilities do not have a permitted WET limit but are required to monitor their discharge. Some of these facilities have more than one permit because they have multiple outfalls. While the majority of facilities in this basin have been consistently in compliance, there have been a few instances of exceedances among the dischargers. All follow-up tests for the initial failures were compliant.

Figure 1a. Upper Catawba River basin facilities required to conduct whole effluent toxicity testing

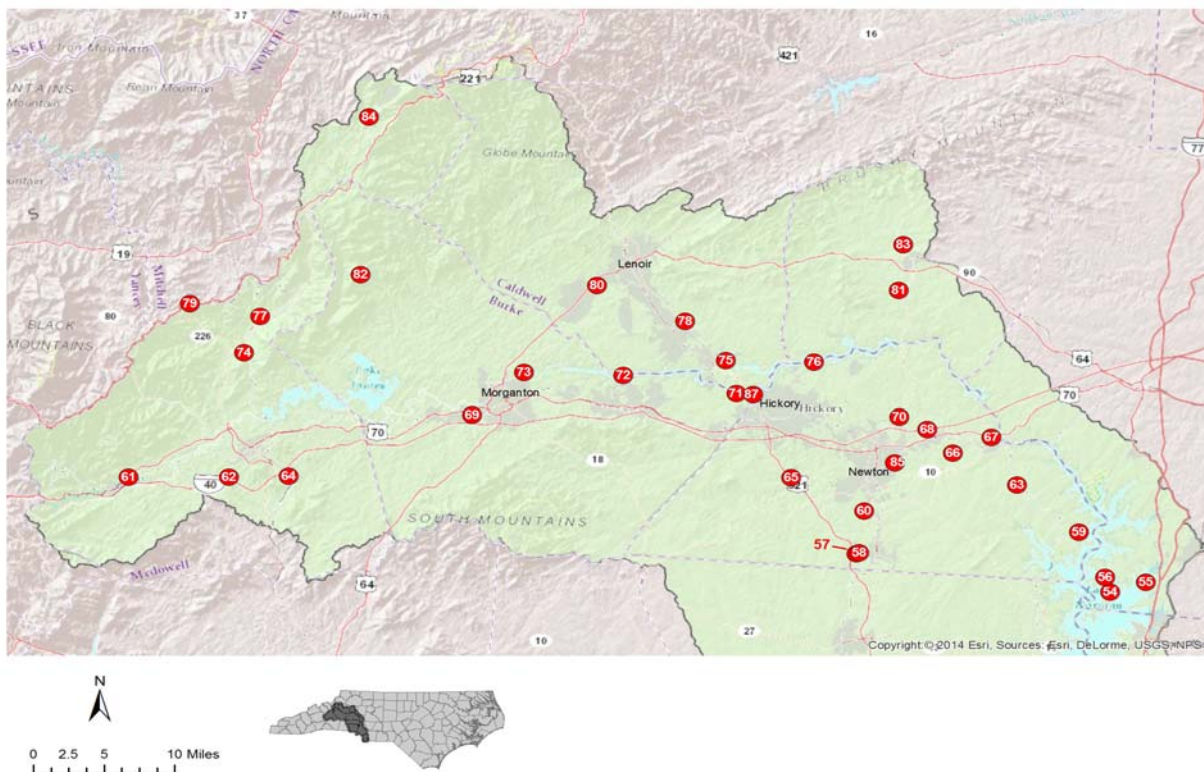
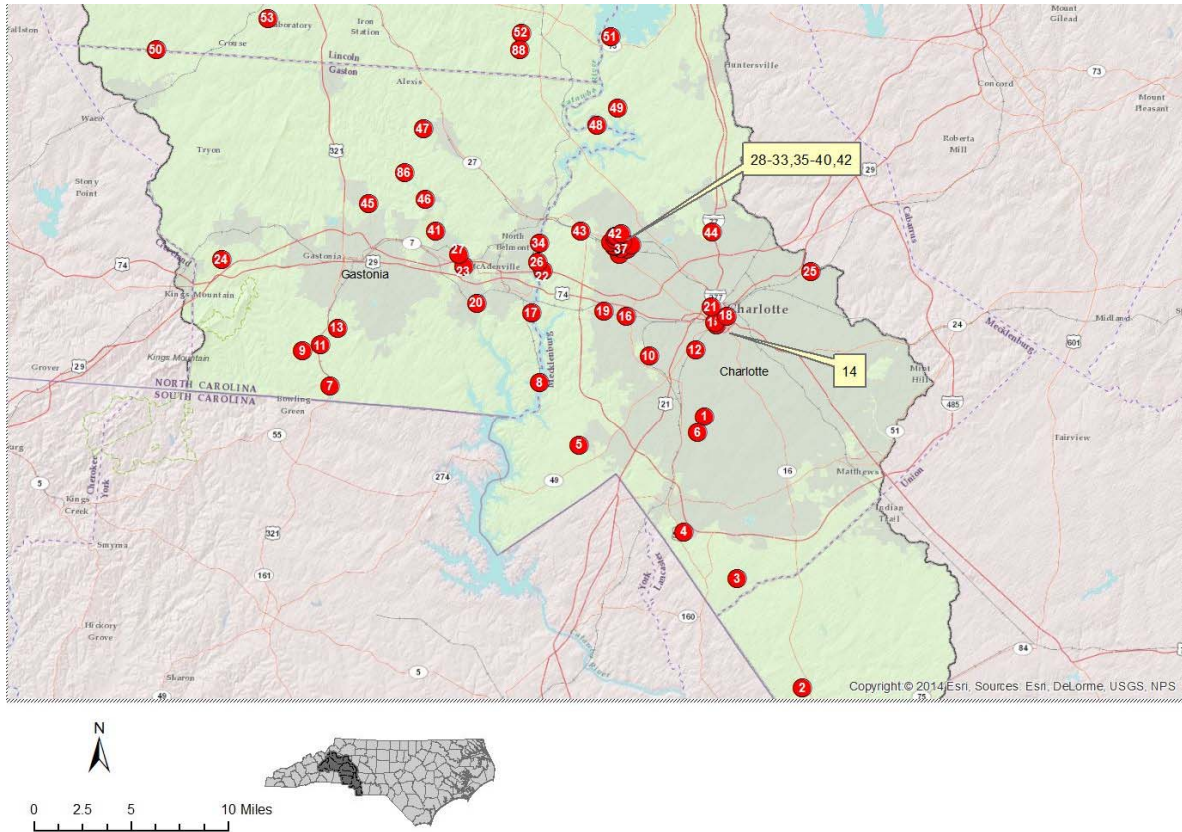


Figure 1b. Lower Catawba River basin facilities required to conduct whole effluent toxicity testing



Key

1	CMUD-Sugar Cr. WWTP	23	Pharr Yarns, Inc.	45	Dallas WWTP	67	Catawba WWTP
2	Union Co-12 Mile Ck WWTP	24	Lithium Corp	46	Gastonia-Long Cr. WWTP	68	Claremont North WWTP
3	Union Co-Six Mile Ck WWTP	25	Unocal Corp-Rhom & Haas Facility	47	Stanley WWTP	69	SGL Carbon, LLC
4	CMUD-McAlpine WWTP	26	Mt. Holly WWTP	48	Duke Power-River Bend 002	70	Conover NE WWTP
5	AquAir WWTP	27	Lowell WWTP	49	CMUD-McDowell Cr. WWTP	71	Huffman Finishing
6	Hoechst Celanese Corp-	28	Motiva Enterprises-Paw Creek	50	Cherryville WWTP	72	Lake Rhodhiss WWTP
7	Gastonia-Crowders Creek	29	Kinder Morgan-Charlotte Terminal#3	51	Duke Power-McGuire	73	Morganton-Catawba R. PCF
8	Duke Power-Allen 002	30	Transmontaigne Charlotte Paw Ck	52	Duke Power-Lincoln Turbine	74	Coats American-Sevier Plant
9	SKF USA (CR Industries)	31	Kinder Morgan SEt Terminals LLC	53	Lincolnton WWTP	75	Granite Falls WWTP
10	CMUD-Irwin Creek WWTP	32	Motiva Enterprises LLC Charlotte 1,2	54	CWS The Point WTP - Well 1	76	Hickory-N.E. WWTP Lenoir
11	Rhodia, Inc. (Handex)	33	Williams Terminals Holdings, L.P.	55	CWS Harbour WTP Wells 1&2	77	Baxter Healthcare Corp
12	Southhaus	34	Clariant Corp.-Mt. Holly Plant	56	CWS Harbour Well #4 WTP	78	Lenoir- Gunpowder Ck WWTP
13	Textron, Inc. GWR WWTP	35	Refuel Terminal Operations WWTP	57	Maiden WWTP	79	Switzerland Inn WWTP
14	The Green at Wach. WWTP	36	Marathon Petroleum	58	Delta Apparel	80	Lenoir- Lower Creek WWTP
15	Wachovia Tryon Street	37	Citgo-Paw Crk Bulk Terminal	59	Duke Power-Marshall 002	81	Taylorsville WWTP
16	National Welders Supply Co	38	Magellan Terminal Holdings- Char	60	Newton - Clark Creek WWTP	82	N C Outward Bound School
17	Belmont WWTP	39	Kinder Morgan-Charlotte Terminal#1	61	Old Fort WWTP	83	Schneider Mills, Inc.- 001
18	Cornerstone Carillon, LLC	40	Kinder Morgan-Charlotte Terminal#1	62	Sugar Hill Truck Stop	84	Linville Resorts, Inc.
19	Charlotte-Douglas Airport	41	Yorkshire Americas, Inc.- Kings Mt	63	Comm Scope Inc-0	85	Conover SE WWTP
20	Cramerton WWTP	42	Colonial Pipeline-Charlotte	64	Marion-Corpensing Cr. WWTP	86	Dallas WTP
21	Cousins Real Estate	43	Livingstone Coating Corporation	65	Hickory-Henry Fork WWTP	87	Hickory WTP
22	American Truetzschler, Inc.	44	PYA/Monarch Inc.	66	Claremont - McLin Ck WWTP	88	Killian Creek