

Map package created for color printing.



0.8 0 0.8 1.6 Miles

Datum: NAD83
Projection: NC State Plane
Map Date: April 2016

Background maps are NOAA nautical charts.

Required attendance in PNA, PSNA, and TNP areas, May - November.

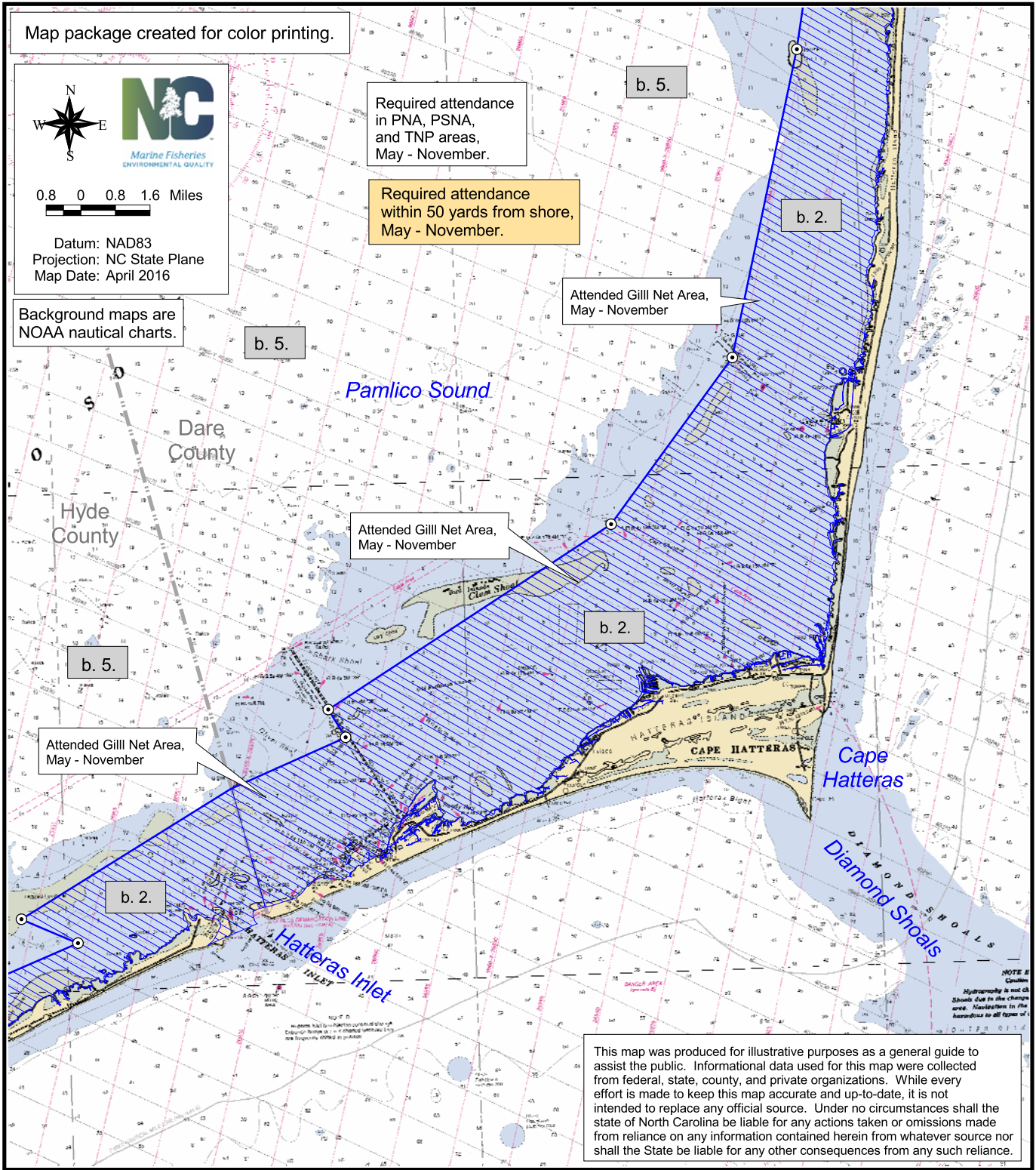
Required attendance within 50 yards from shore, May - November.

Attended Gill Net Area, May - November

Attended Gill Net Area, May - November

Attended Gill Net Area, May - November

This map was produced for illustrative purposes as a general guide to assist the public. Informational data used for this map were collected from federal, state, county, and private organizations. While every effort is made to keep this map accurate and up-to-date, it is not intended to replace any official source. Under no circumstances shall the state of North Carolina be liable for any actions taken or omissions made from reliance on any information contained herein from whatever source nor shall the State be liable for any other consequences from any such reliance.



Attended Gill Net Areas (AGNA)
(rule ID = 15A NCAC 03R .0112)

- Neuse, Pamlico, Pungo, + Trent Rivers
- Outer Banks and Core Banks areas
- within 50 yards from shoreline
- within 200 yards from shoreline

= AGNA rule coding

Attended Gill Net Areas for Gill Nets Less Than 5 Inches Mesh Length

Map 10

- WRC Wildlife Resource Commission INLAND WATERS ONLY, with WRC label (rule ID = 15A NCAC 03Q .0202)
- MDZRA Military Danger Zones and Restricted Areas (rule ID = 15A NCAC 03R .0102)
- PNA Primary Nursery Areas (rule ID = 15A NCAC 03R .0103)
- PSNA Permanent Secondary Nursery Areas (rule ID = 15A NCAC 03R .0104)
- TNP Trawl Nets Prohibited, areas = 2, 4, 5, 8, 10, 11, 12 (rule ID = 15A NCAC 03R .0106)